



UGANDA BUREAU OF STATISTICS



CONSUMER PRICE INDEX

DECEMBER 2015

Uganda Bureau of Statistics,
Plot 9 Colville Street,
P.O. Box 7186,
Kampala
Tel: 0414 - 706000
Fax: 0414 - 237553
E-mail: ubos@ubos.org
Website: www.ubos.org

Contents

FOREWORD	ii
HIGHLIGHTS OF CONSUMER PRICE INDEX FOR DECEMBER 2015	1
RELEASE CALENDAR FOR CPI 2015	2
TABLE 1: PRICE PERCENTAGE CHANGES BY CENTRE , NOVEMBER 2015 & DECEMBER 2015 (BASE: 2005/2006 = 100)	3
TABLE 2: MONTHLY PRICE PERCENTAGE CHANGES BY GROUP, DECEMBER 2015 (BASE: 2005/2006 = 100)	3
TABLE 3: COMPOSITE CONSUMER PRICE INDEX (CPI) (BASE: 2005/2006 =100)	4
TABLE 4: COMPOSITE CPI BREAKDOWN BY MAJOR GROUPS, (BASE 2005/2006=100)	5
TABLE 5: COMPOSITE CPI BREAKDOWN BY MAJOR GROUP , ANNUAL PERCENTAGE CHANGES	6
TABLE 6: COMPOSITE CPI FOR FOOD AND NON FOOD (BASE 2005/2006=100)	7
TABLE 7: COMPOSITE CPI BREAKDOWN FOR FOOD CROPS, OTHER GOODS AND SERVICES (BASE 2005/6=100)	8
TABLE 8: CONSUMER PRICE INDEX - KAMPALA HIGH INCOME (BASE: 2005/2006 =100)	9
TABLE 9: CONSUMER PRICE INDEX KAMPALA MIDDLE & LOW INCOME (BASE: 2005/2006 =100)	10
TABLE 10: CONSUMER PRICE INDEX JINJA (BASE: 2005/2006 =100)	11
TABLE 11: CONSUMER PRICE INDEX MBALE (BASE: 2005/2006 =100)	12
TABLE 12: CONSUMER PRICE INDEX MSAKA (BASE: 2005/2006 =100)	13
TABLE 13: CONSUMER PRICE INDEX MBARARA (BASE: 2005/2006 =100)	14
TABLE 14: CONSUMER PRICE INDEX GULU (BASE: 2005/2006 =100)	15
TABLE 15: CONSUMER PRICE INDEX ARUA (BASE: 2005/2006 =100)	16
TABLE 16: AVERAGE RETAIL MARKET PRICES (UG. SHS) FOR CPI COMMODITIES -PAGES A1-A5	17

Foreword

This publication provides the monthly Consumer Price Indices for Uganda (Composite) and for the eight baskets of Kampala High Income, Kampala Low and Middle Income, Jinja, Mbale, Masaka, Mbarara, Gulu and Arua. All the baskets are for the urban households.

The current Consumer Price Index was rebased from (July 1997 to June 1998 = 100) to (July 2005 to June 2006 = 100) using weights derived from the 2005/2006 Uganda National Household Survey data. During the rebasing exercise, Kampala was decomposed into two baskets. In addition, Arua centre was incorporated into the Index. The number of elementary aggregates in the revised Index was increased from 125 to 276.

At the elementary aggregate level, the indices are computed using the Jevons (Geometric Mean) method for all items within the elementary aggregates. The modified Laspeyres index formula is used to compute higher level indices. The National CPI is computed as a weighted average of the eight baskets mentioned above.

Chris N Mukiza

For: EXECUTIVE DIRECTOR

Highlights of Consumer Price Index for December 2015

1.0 ANNUAL INFLATION

The Annual Headline Inflation for the year ending December 2015 rose to 9.3 per cent compared to the 9.1 per cent that was recorded for the year ended November 2015. The main driver was the Annual Core Inflation which rose to 7.4 per cent for the year ending December 2015, compared to the 6.7 per cent recorded for the year ended November 2015. The other driver was, the Annual Energy, Fuel and Utilities (EFU) Inflation increased slightly to 12.2 per cent for the year ending December 2015 compared to the 12.1 per cent recorded in November 2015. However, the Annual Food Crops Inflation decreased to 18.6 per cent for the year ending December 2015 compared to the 20.3 per cent registered during the year ended November 2015 (Table 1).

The Annual average Inflation rate for the 2015 calendar year rose to 5.2 percent compared to the 4.3 percent that was recorded for the calendar year 2014 (Table 3).

1.1 ANNUAL HEADLINE INFLATION BY CENTRE

Masaka registered the highest Annual Inflation of 11.4 per cent compared to the 11.5 per cent recorded for the year ended November 2015. The second was Jinja with an Annual Inflation of 10.9 per cent compared to the 9.3 per cent that was recorded for the year ended November 2015. Kampala Middle and Low Income registered the third highest Annual Inflation of 10.5 per cent, compared to 9.8 per cent recorded during the year ended November 2015. The main drivers in the three centres were high price levels of food. In addition, clothing was among the drivers for Masaka and Kampala Middle and Low income, while charcoal contributed to high inflation in Jinja. For Inflation rates of other centers refer to Table 1.

1.2 FOOD AND NON-FOOD INFLATION

Food, which includes food crops and processed foods, registered an annual inflation of 16.5 per cent for the year ending December 2015. This is lower than the 17.2 per cent recorded during the year ended November 2015. The Annual Non-Food Inflation rose to 5.9 per cent for the year ending December 2015, which is higher than the 5.4 per cent recorded for the year ended November 2015 (Table 6).

1.3 OTHER GOODS AND SERVICES INFLATION

The Annual Inflation for Other Goods rose to 8.6 per cent in December 2015 compared to the 7.7 per cent recorded for the year ended November 2015. Similarly, the Annual Inflation for Services increased to 6.4 per cent in December 2015 compared to the 6.1 per cent recorded for the year ended November 2015 (Table 7).

2.0 MONTHLY INFLATION

The Monthly Headline Inflation for December 2015 stabilised at 0.0 per cent from the 0.1 per cent decline recorded in November 2015.

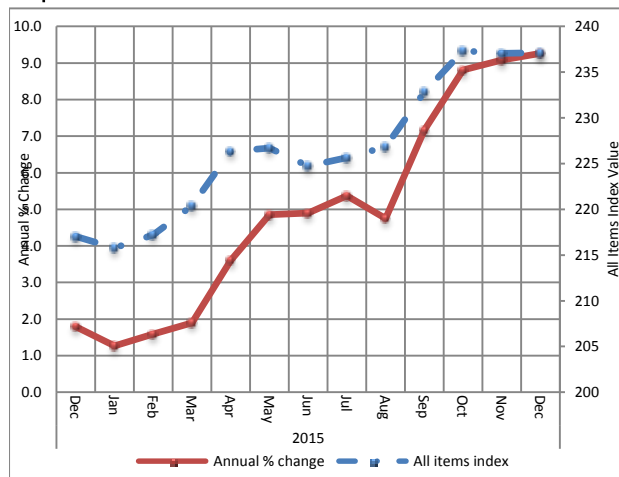
Food Inflation continued to register a deceleration by 1.9 per cent from the earlier 0.6 per cent in November 2015. This is mainly attributed to the Monthly Food crops Inflation that declined further by 4.9 per cent in December 2015 from the earlier 2.7 per cent drop recorded in November 2015.

The drivers were the reduction in prices for *matooke*, Irish potatoes, cassava, sweet bananas, pineapples, pumpkins, onions and milk in most centers. However, there was an increase in the prices for oranges, cabbage, tomatoes, green pepper, eggplants, bitter tomatoes, carrots, rice, maize flour, fish and sugar.

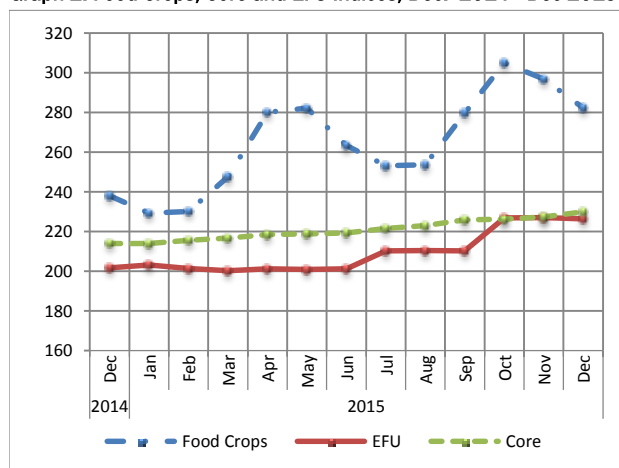
Similarly, prices of kerosene, petrol and diesel went down. As a result, the monthly EFU Inflation for December 2015 decelerated by 0.3 per cent from the 0.0 per cent observed in November 2015.

However, the monthly Core Inflation for December 2015 increased by 1.1 per cent from the 0.5 per cent that was registered in November 2015. The drivers were the increase in prices for clothing, charcoal, firewood, transport fares, salon services and meals in restaurants.

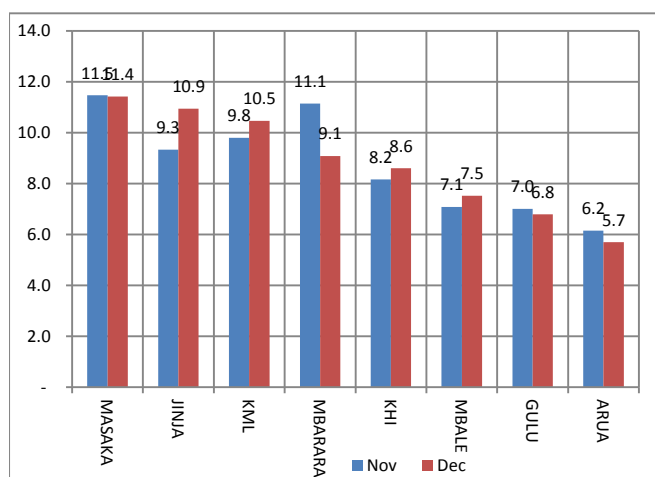
Graph 1: Headline Index and Annual Inflation Dec 2014 –Dec 2015



Graph 2: Food Crops, Core and EFU Indices, Dec. 2014 –Dec 2015



Graph 3: Annual Headline Inflation by Centre, Nov. 2015 & Dec. 2015.



Release calendar for CPI 2015

Month	Expected Date	Actual Date
January	30 th	30 th
February	27 th	27 th
March	31 st	31 st
April	30 th	30 th
May	29 th	29 th
June	30 th	30 th
July	31 st	31 st
August	31 st	31 st
September	30 th	30 th
October	30 th	30 th
November	30 th	30 th
December	31 st	31 st

Table 1: Price percentage changes by Centre , November 2015 & December 2015 (BASE: 2005/2006 = 100)

		COMPOSITE	KHI	KML	JINJA	MBALE	MASAKA	MBARARA	GULU	ARUA
Headline inflation (All Items)										
Month of:	Nov	-0.1	0.0	-0.2	0.6	0.1	-0.5	-1.9	2.3	1.4
	Dec	0.0	0.7	0.3	0.4	0.3	-0.1	-2.8	0.0	0.8
Year ending:	Nov	9.1	8.2	9.8	9.3	7.1	11.5	11.1	7.0	6.2
	Dec	9.3	8.6	10.5	10.9	7.5	11.4	9.1	6.8	5.7
Core inflation (Excluding food crops and EFU)										
Month of	Nov	0.5	0.2	0.4	1.6	0.1	0.7	0.4	-0.2	1.9
	Dec	1.1	1.6	1.0	0.8	0.8	1.3	0.8	0.6	1.4
Year ending:	Nov	6.7	6.0	7.3	8.6	4.1	7.7	7.8	5.1	6.6
	Dec	7.4	6.9	8.1	9.4	4.9	8.5	7.6	5.1	6.6
Food crops and related items										
Month of	Nov	-2.7	-1.3	-3.2	-3.2	0.1	-5.5	-9.1	13.4	-0.2
	Dec	-4.9	-4.9	-2.3	-1.3	-2.1	-5.4	-14.9	-2.1	-1.4
Year ending:	Nov	20.3	20.0	22.0	13.2	22.4	29.7	23.5	14.9	5.1
	Dec	18.6	17.7	22.3	19.5	21.2	26.2	14.8	14.1	2.8
Energy, Fuel & Utilities										
Month of	Nov	0.0	0.1	0.1	0.0	-0.3	0.2	0.0	0.3	-1.1
	Dec	-0.3	-0.3	-0.2	-0.2	-0.3	-0.1	-0.2	-0.6	-1.5
Year ending:	Nov	12.1	15.7	11.8	8.3	11.8	11.1	11.8	5.3	1.3
	Dec	12.2	15.8	11.9	8.4	11.7	11.4	12.1	4.7	0.1

Source: Uganda Bureau of Statistics

Table 2: Monthly price percentage changes by Group, December 2015 (BASE: 2005/2006 = 100)

ITEM/CENTRE	COMPOSITE	KHI	KML	JINJA	MBALE	MASAKA	MBARARA	GULU	ARUA
Food	-1.9	-2.2	-0.3	0.2	0.8	-1.9	-8.8	0.1	1.5
Beverages & tobacco	0.0	0.1	-0.1	1.7	0.0	-0.2	0.0	-0.6	-0.9
Clothing & footwear	1.9	2.0	1.7	1.8	0.7	2.1	3.1	2.0	1.5
Rent, fuel & utilities	0.4	0.0	0.6	-0.7	-0.4	1.5	1.9	-0.4	-1.4
Household and personal goods	0.7	0.6	0.6	1.2	0.9	1.4	-0.1	0.6	0.9
Transport & communication	1.7	2.4	2.6	3.4	-0.2	0.5	0.3	-0.1	0.4
Education	0.0	0.1	0.0	-0.3	-0.2	0.0	0.0	0.0	0.2
Health, Entertainment & others	1.5	4.2	0.1	0.4	0.0	1.1	-0.2	0.0	0.9

Source: Uganda Bureau of Statistics

Note:

KHI: Kampala High Income

KML: Kampala Middle and Low income

Table 3: Composite Consumer Price Index (CPI) (Base: 2005/2006 =100)

	Food	Beverages and tobacco	Clothing and footwear	Rent, Fuel and Utilities	Household and personal goods	Transport and communication	Education	Health, entert. & Others	All items index	Monthly % change	Annual % change
Weights	27.1558	4.7246	4.4279	14.8374	4.5009	12.8259	14.6940	16.8335	100.0000		
Calendar year											
2013	245.97	201.85	199.74	224.83	219.14	139.66	174.89	207.42	207.17		5.5
2014	257.23	202.95	209.19	231.25	223.84	145.50	183.47	220.18	216.05		4.3
2015	274.04	207.17	233.63	241.34	229.58	146.71	192.14	235.30	227.34		5.2
Financial year											
2012/2013	235.79	190.45	190.06	219.35	214.99	136.38	170.96	199.20	200.18		5.6
2013/2014	258.23	203.11	205.70	227.49	221.51	142.63	179.85	214.19	213.58		6.7
2014/2015	258.72	204.52	218.44	235.16	226.30	147.59	187.24	226.17	219.31		2.7
Monthly											
201											
Jun	240.73	180.33	185.80	209.95	211.37	132.10	168.01	189.59	196.99	-0.4	18.0
Jul	231.77	179.98	182.36	215.03	211.60	132.91	167.72	190.41	195.27	-0.9	14.3
Aug	234.81	179.01	181.74	216.13	212.18	132.41	167.95	191.21	196.25	0.5	11.9
Sep	237.23	178.11	182.92	215.27	213.05	133.25	170.69	194.25	197.82	0.8	5.5
Oct	238.12	181.57	183.96	216.75	212.26	133.44	170.73	194.66	198.33	0.3	4.4
Nov	238.64	181.21	190.75	215.92	212.78	136.16	170.82	196.68	199.44	0.6	4.9
Dec	233.97	187.63	192.65	215.29	213.42	142.95	170.84	199.29	199.76	0.2	5.3
201											
Jan	228.39	194.87	192.50	220.51	215.30	136.65	170.80	202.09	199.25	-0.3	4.9
Feb	228.84	197.13	191.28	224.21	215.79	136.67	171.63	202.89	200.15	0.5	3.5
Mar	234.01	200.62	193.12	222.25	216.98	137.96	171.89	203.49	201.89	0.9	4.0
Apr	242.75	200.94	195.73	224.02	218.86	138.02	171.83	204.24	204.73	1.4	3.4
May	243.63	201.92	196.58	223.47	218.96	137.55	171.38	205.49	205.12	0.2	3.7
Jun	237.32	202.47	197.08	223.40	218.68	138.55	175.21	205.74	204.11	-0.5	3.6
Jul	238.23	203.45	197.75	227.64	219.73	138.20	175.22	206.67	205.30	0.6	5.1
Aug	256.12	203.85	199.14	227.42	219.95	141.16	175.04	207.51	210.61	2.6	7.3
Sep	264.90	204.18	202.48	227.79	220.79	141.07	178.81	211.49	214.35	1.8	8.4
Oct	264.09	203.88	208.21	225.69	220.79	142.55	178.93	211.59	214.35	0.0	8.1
Nov	257.94	204.91	210.06	226.00	221.22	142.02	178.94	212.67	212.95	-0.7	6.8
Dec	255.39	203.96	212.99	225.54	222.52	145.56	179.02	215.15	213.20	0.1	6.7
201											
Jan	253.63	201.47	211.94	227.24	222.15	143.44	179.21	217.30	213.07	-0.1	6.9
Feb	253.98	202.40	208.88	229.17	221.32	143.49	182.08	216.80	213.83	0.4	6.8
Mar	263.83	202.66	203.52	229.22	222.00	143.96	182.07	216.80	216.29	1.1	7.1
Apr	272.47	202.46	204.82	228.43	221.98	144.39	181.79	216.49	218.49	1.0	6.7
May	263.70	201.50	205.73	227.41	222.73	142.86	181.82	219.13	216.22	-1.0	5.4
Jun	254.44	202.61	202.91	228.37	223.00	142.83	185.21	218.64	214.26	-0.9	5.0
Jul	250.19	203.87	203.81	231.38	224.52	143.04	185.16	219.21	214.14	-0.1	4.3
Aug	255.73	204.01	208.29	231.84	224.96	147.78	185.40	221.00	216.55	1.1	2.8
Sep	257.59	203.81	211.34	232.84	225.46	148.00	185.12	221.63	217.27	0.3	1.4
Oct	256.95	204.32	213.87	237.50	225.50	148.01	185.08	223.46	218.14	0.4	1.8
Nov	253.74	203.03	216.25	236.34	226.16	148.16	184.50	224.76	217.33	-0.4	2.1
Dec	250.48	203.30	218.91	235.32	226.25	149.99	184.17	226.99	217.03	-0.1	1.8
201											
Jan	245.38	205.38	218.53	235.35	226.76	148.27	184.57	227.85	215.77	-0.6	1.3
Feb	246.44	205.44	219.11	237.49	227.61	148.12	190.17	227.34	217.23	0.7	1.6
Mar	258.09	205.49	222.72	237.34	228.05	147.63	190.27	227.92	220.40	1.5	1.9
Apr	278.42	204.76	226.67	236.08	227.90	147.64	190.22	231.17	226.36	2.7	3.6
May	281.23	204.87	229.24	234.76	226.32	146.80	190.32	230.88	226.71	0.2	4.9
June	270.25	205.97	232.52	235.68	226.09	147.66	191.95	231.89	224.75	-0.9	4.9
July	267.14	209.27	235.86	240.62	228.35	149.33	192.22	233.65	225.64	0.4	5.4
Aug	268.66	210.25	239.35	240.96	230.35	149.95	192.33	236.01	226.85	0.5	4.8
Sep	284.52	209.47	241.92	242.24	232.07	150.20	195.69	241.52	232.83	2.6	7.2
Oct	299.12	208.68	243.98	250.55	232.67	140.87	195.84	244.33	237.35	1.9	8.8
Nov	297.38	208.19	244.49	252.07	233.65	140.79	196.08	243.68	237.07	-0.1	9.1
Dec	291.86	208.27	249.20	252.97	235.17	143.25	196.07	247.31	237.13	0.0	9.3

Source: Uganda Bureau of Statistics

Table 4: Composite CPI Breakdown by Major Groups, (Base 2005/2006=100)

		Food Crops	Energy, Fuel & Utilities (EFU)	Core	All Items Index	Monthly percentage changes				Annual percentage changes				
						Food Crops	Energy, Fuel & Utilities (EFU)	Core	All items index	Food Crops	Energy, Fuel & Utilities (EFU)	Core	All items index	
Weights		13.4511	4.9156	81.6333	100.0000									
Calendar year														
2013		227.26	193.87	204.19	207.17					2.6	0.6	6.3	5.5	
2014		252.54	199.86	210.50	216.05					11.1	3.1	3.1	4.3	
2015		266.96	209.96	221.41	227.34					5.7	5.1	5.2	5.2	
Financial year														
2012/2013		215.57	192.07	197.67	200.18					0.9	6.0	6.5	5.6	
2013/2014		250.93	197.88	207.84	213.58					16.4	3.0	5.1	6.7	
2014/2015		251.13	201.57	214.68	219.31					0.1	1.9	3.3	2.7	
Monthly														
2012	Jun	225.91	187.73	192.26	196.99	-5.0	-0.3	0.5	-0.4	11.3	12.9	19.6	18.0	
	Jul	212.51	197.07	191.85	195.27	-5.9	5.0	-0.2	-0.9	7.5	16.7	15.4	14.3	
	Aug	217.48	194.44	192.31	196.25	2.3	-1.3	0.2	0.5	12.8	14.7	11.4	11.9	
	Sep	222.59	193.90	193.35	197.82	2.4	-0.3	0.5	0.8	6.3	12.6	4.9	5.5	
	Oct	223.88	194.91	193.84	198.33	0.6	0.5	0.3	0.3	4.4	12.8	4.0	4.4	
	Nov	227.28	196.50	194.58	199.44	1.5	0.8	0.4	0.6	7.5	13.8	3.9	4.9	
	Dec	217.07	188.51	197.26	199.76	-4.5	-4.1	1.4	0.2	7.3	9.0	4.6	5.3	
	2013	Jan	202.11	189.21	199.04	199.25	-6.9	0.4	0.9	-0.3	3.0	-2.1	5.6	4.9
		Feb	197.67	188.82	200.84	200.15	-2.2	-0.2	0.9	0.5	-6.2	-3.3	5.6	3.5
		Mar	205.41	190.43	201.54	201.89	3.9	0.9	0.3	0.9	-8.5	-2.0	6.8	4.0
		Apr	223.48	190.60	202.01	204.73	8.8	0.1	0.2	1.4	-7.4	1.8	5.8	3.4
		May	225.43	190.82	202.12	205.12	0.9	0.1	0.1	0.2	-5.2	1.3	5.6	3.7
Jun		211.89	189.69	203.32	204.11	-6.0	-0.6	0.6	-0.5	-6.2	1.0	5.8	3.6	
Jul		211.86	197.59	204.17	205.30	0.0	4.2	0.4	0.6	-0.3	0.3	6.4	5.1	
Aug		245.43	197.56	205.07	210.61	15.8	0.0	0.4	2.6	12.9	1.6	6.6	7.3	
Sep		258.55	197.89	207.54	214.35	5.3	0.2	1.2	1.8	16.2	2.1	7.3	8.4	
Oct		255.83	197.96	207.88	214.35	-1.1	0.0	0.2	0.0	14.3	1.6	7.2	8.1	
Nov		244.81	198.07	208.19	212.95	-4.3	0.1	0.1	-0.7	7.7	0.8	7.0	6.8	
Dec		244.70	197.78	208.50	213.21	0.0	-0.1	0.2	0.1	12.7	4.9	5.7	6.7	
2014	Jan	245.19	197.52	208.23	213.07	0.2	-0.1	-0.1	-0.1	21.3	4.4	4.6	6.9	
	Feb	247.40	197.77	208.66	213.83	0.9	0.1	0.2	0.4	25.2	4.7	3.9	6.8	
	Mar	263.55	198.74	208.95	216.29	6.5	0.5	0.1	1.1	28.3	4.4	3.7	7.1	
	Apr	280.30	198.42	208.93	218.49	6.4	-0.2	0.0	1.0	25.4	4.1	3.4	6.7	
	May	265.19	197.82	208.80	216.22	-5.4	-0.3	-0.1	-1.0	17.6	3.7	3.3	5.4	
	Jun	248.31	197.48	209.13	214.26	-6.4	-0.2	0.2	-0.9	17.2	4.1	2.9	5.0	
	Jul	239.14	198.24	210.30	214.14	-3.7	0.4	0.6	-0.1	12.9	0.3	3.0	4.3	
	Aug	249.20	202.45	211.45	216.55	4.2	2.1	0.5	1.1	1.5	2.5	3.1	2.8	
	Sep	253.73	202.74	211.72	217.27	1.8	0.1	0.1	0.3	-1.9	2.5	2.0	1.4	
	Oct	253.80	202.87	212.80	218.14	0.0	0.1	0.5	0.4	-0.8	2.5	2.4	1.8	
	Nov	246.65	202.47	212.94	217.33	-2.8	-0.2	0.1	-0.4	0.8	2.2	2.3	2.1	
	Dec	238.04	201.82	214.08	217.03	-3.5	-0.3	0.5	-0.1	-2.7	2.0	2.7	1.8	
2015	Jan	229.29	203.23	213.95	215.77	-3.7	0.7	-0.1	-0.6	-6.5	2.9	2.7	1.3	
	Feb	230.19	201.37	215.55	217.23	0.4	-0.9	0.7	0.7	-7.0	1.8	3.3	1.6	
	Mar	247.64	200.25	216.68	220.40	7.6	-0.6	0.5	1.5	-6.0	0.8	3.7	1.9	
	Apr	280.11	201.20	218.49	226.36	13.1	0.5	0.8	2.7	-0.1	1.4	4.6	3.6	
	May	282.19	200.94	218.79	226.71	0.7	-0.1	0.1	0.2	6.4	1.6	4.8	4.9	
	June	263.39	201.25	219.40	224.75	-6.7	0.2	0.3	-0.9	6.1	1.9	4.9	4.9	
	July	253.20	210.22	221.64	225.64	-3.9	4.5	1.0	0.4	5.9	6.0	5.4	5.4	
	Aug	253.69	210.41	223.00	226.85	0.2	0.1	0.6	0.5	1.8	3.9	5.5	4.8	
	Sep	279.64	210.37	225.92	232.83	10.2	0.0	1.3	2.6	10.2	3.8	6.7	7.2	
	Oct	304.98	226.94	226.23	237.35	9.1	7.9	0.1	1.9	20.2	11.9	6.3	8.8	
	Nov	296.80	227.01	227.31	237.07	-2.7	0.0	0.5	-0.1	20.3	12.1	6.7	9.1	
	Dec	282.37	226.36	229.90	237.13	-4.9	-0.3	1.1	0.0	18.6	12.2	7.4	9.3	

Source: Uganda Bureau of Statistics

Table 5: Composite CPI Breakdown by Major Group , Annual Percentage Changes

		Food	Beverages and tobacco	Clothing and footwear	Rent, Fuel and utilities	Household and personal goods	Transport and communica tion	Education	Health, Entert. & Others	All Items Index
Weights		27.1558	4.7246	4.4279	14.8374	4.5009	12.8259	14.6940	16.8335	100.0000
Calendar Year										
	2013	3.6	12.7	4.7	5.0	4.2	4.5	6.7	8.8	5.5
	2014	4.9	0.6	4.8	2.9	2.1	4.2	4.9	6.2	4.3
	2015	6.6	2.1	11.7	4.3	2.6	0.9	4.7	6.8	5.2
Financial Year										
	2012/2013	-0.6	11.3	0.3	8.5	6.8	6.1	12.4	10.8	5.6
	2013/2014	9.5	6.6	8.2	3.7	3.0	4.6	5.2	7.5	6.7
	2014/2015	0.2	0.7	6.2	3.4	2.2	3.5	4.1	5.6	2.7
Monthly										
	2012									
	Jun	12.8	25.5	19.0	25.7	18.2	17.4	18.1	18.0	18.0
	Jul	5.4	23.6	12.5	26.9	15.9	17.4	16.9	15.9	14.3
	Aug	4.2	9.9	6.4	23.3	13.1	15.9	16.5	13.8	11.9
	Sep	-2.8	6.1	2.3	10.3	9.7	4.0	16.5	12.3	5.5
	Oct	-2.5	6.2	-2.7	6.0	7.6	3.6	16.5	11.2	4.4
	Nov	-2.0	5.2	-1.2	6.4	6.2	4.8	16.5	11.5	4.9
	Dec	0.0	8.5	-4.0	6.0	4.4	5.5	16.2	10.3	5.3
	2013									
	Jan	0.0	12.0	-4.4	3.9	5.4	2.5	15.8	9.9	4.9
	Feb	-2.0	12.6	-4.8	3.9	4.4	4.0	8.2	9.8	3.5
	Mar	-0.9	14.0	-2.9	3.8	4.5	4.7	8.2	10.1	4.0
	Apr	-2.6	13.7	-1.0	4.8	4.9	4.3	8.3	9.0	3.4
	May	-2.1	12.3	1.5	6.4	4.3	4.1	8.0	8.0	3.7
	Jun	-1.4	12.3	6.1	6.4	3.5	4.9	4.3	8.5	3.6
	Jul	2.8	13.0	8.4	5.9	3.8	4.0	4.5	8.5	5.1
	Aug	9.1	13.9	9.6	5.2	3.7	6.6	4.2	8.5	7.3
	Sep	11.7	14.6	10.7	5.8	3.6	5.9	4.8	8.9	8.4
	Oct	10.9	12.3	13.2	4.1	4.0	6.8	4.8	8.7	8.1
	Nov	8.1	13.1	10.1	4.7	4.0	4.3	4.8	8.1	6.8
	Dec	9.2	8.7	10.6	4.8	4.3	1.8	4.8	8.0	6.7
	2014									
	Jan	11.1	3.4	10.1	3.1	3.2	5.0	4.9	7.5	6.9
	Feb	11.0	2.7	9.2	2.2	2.6	5.0	6.1	6.9	6.8
	Mar	12.7	1.0	5.4	3.1	2.3	4.4	5.9	6.5	7.1
	Apr	12.2	0.8	4.6	2.0	1.4	4.6	5.8	6.0	6.7
	May	8.2	-0.2	4.7	1.8	1.7	3.9	6.1	6.6	5.4
	Jun	7.2	0.1	3.0	2.2	2.0	3.1	5.7	6.3	5.0
	Jul	5.0	0.2	3.1	1.6	2.2	3.5	5.7	6.1	4.3
	Aug	-0.2	0.1	4.6	1.9	2.3	4.7	5.9	6.5	2.8
	Sep	-2.8	-0.2	4.4	2.2	2.1	4.9	3.5	4.8	1.4
	Oct	-2.7	0.2	2.7	5.2	2.1	3.8	3.4	5.6	1.8
	Nov	-1.6	-0.9	2.9	4.6	2.2	4.3	3.1	5.7	2.1
	Dec	-1.9	-0.3	2.8	4.3	1.7	3.0	2.9	5.5	1.8
	2015									
	Jan	-3.3	1.9	3.1	3.6	2.1	3.4	3.0	4.9	1.3
	Feb	-3.0	1.5	4.9	3.6	2.8	3.2	4.4	4.9	1.6
	Mar	-2.2	1.4	9.4	3.5	2.7	2.5	4.5	5.1	1.9
	Apr	2.2	1.1	10.7	3.4	2.7	2.2	4.6	6.8	3.6
	May	6.6	1.7	11.4	3.2	1.6	2.8	4.7	5.4	4.9
	June	6.2	1.7	14.6	3.2	1.4	3.4	3.6	6.1	4.9
	July	6.8	2.6	15.7	4.0	1.7	4.4	3.8	6.6	5.4
	Aug	5.1	3.1	14.9	3.9	2.4	1.5	3.7	6.8	4.8
	Sep	10.5	2.8	14.5	4.0	2.9	1.5	5.7	9.0	7.2
	Oct	16.4	2.1	14.1	5.5	3.2	-4.8	5.8	9.3	8.8
	Nov	17.2	2.5	13.1	6.7	3.3	-5.0	6.3	8.4	9.1
	Dec	16.5	2.4	13.8	7.5	3.9	-4.5	6.5	9.0	9.3

Source: Uganda Bureau of Statistics

Table 6: Composite CPI for Food and Non Food (Base 2005/2006=100)

	Food	Non Food	All items index	Monthly percentage changes			Annual percentage changes		
				Food	Non Food	All items index	Food	Non Food	All items index
Weights	27.1558	72.8442	100.0000						
Calendar year									
2013	245.97	192.32	207.17				3.5	6.6	5.5
2014	257.23	200.36	216.05				4.9	4.2	4.3
2015	274.04	209.83	227.34				6.6	4.7	5.2
Financial year									
2012/2013	235.79	186.34	200.18				-0.6	8.9	5.6
2013/2014	258.23	196.61	213.58				9.5	5.5	6.7
2014/2015	258.72	204.41	219.31				0.2	4.0	2.7
Monthly									
2012 Jun	240.73	179.74	196.99	-3.3	0.8	-0.4	12.8	20.4	18.0
Jul	231.77	180.76	195.27	-3.7	0.6	-0.9	5.4	19.0	14.3
Aug	234.81	181.10	196.25	1.3	0.2	0.5	4.2	16.0	11.9
Sep	237.23	182.37	197.82	1.0	0.7	0.8	-2.8	10.1	5.5
Oct	238.12	183.07	198.33	0.4	0.4	0.3	-2.5	8.3	4.4
Nov	238.64	184.37	199.44	0.2	0.7	0.6	-2.0	8.6	4.9
Dec	233.97	186.65	199.76	-2.0	1.2	0.2	0.0	8.0	5.3
2013 Jan	228.39	187.77	199.25	-2.4	0.6	-0.3	0.0	7.2	4.9
Feb	228.84	188.83	200.15	0.2	0.6	0.5	-2.0	6.0	3.5
Mar	234.01	189.33	201.89	2.3	0.3	0.9	-0.9	6.5	4.0
Apr	242.75	190.10	204.73	3.7	0.4	1.4	-2.6	6.6	3.4
May	243.63	190.31	205.12	0.4	0.1	0.2	-2.1	6.8	3.7
Jun	237.32	191.38	204.11	-2.6	0.6	-0.5	-1.4	6.5	3.6
Jul	238.23	192.58	205.30	0.4	0.6	0.6	2.8	6.5	5.1
Aug	256.12	193.34	210.61	7.5	0.4	2.6	9.1	6.8	7.3
Sep	264.90	195.32	214.35	3.4	1.0	1.8	11.7	7.1	8.4
Oct	264.09	195.52	214.35	-0.3	0.1	0.0	10.9	6.8	8.1
Nov	257.94	196.00	212.95	-2.3	0.2	-0.7	8.1	6.3	6.8
Dec	255.39	197.30	213.20	-1.0	0.7	0.1	9.2	5.7	6.7
2014 Jan	253.63	197.57	213.07	-0.7	0.1	-0.1	11.1	5.2	6.9
Feb	253.98	198.37	213.83	0.1	0.4	0.4	11.0	5.1	6.8
Mar	263.83	198.20	216.29	3.9	-0.1	1.1	12.7	4.7	7.1
Apr	272.47	198.07	218.49	3.3	-0.1	1.0	12.2	4.2	6.7
May	263.70	198.21	216.22	-3.2	0.1	-1.0	8.2	4.1	5.4
Jun	254.44	198.82	214.26	-3.5	0.3	-0.9	7.2	3.9	5.0
Jul	250.19	199.85	214.14	-1.7	0.5	-0.1	5.0	3.8	4.3
Aug	255.73	201.54	216.55	2.2	0.8	1.1	-0.2	4.2	2.8
Sep	257.59	202.11	217.27	0.7	0.3	0.3	-2.8	3.5	1.4
Oct	256.95	203.59	218.14	-0.2	0.7	0.4	-2.7	4.1	1.8
Nov	253.74	203.61	217.33	-1.3	0.0	-0.4	-1.6	3.9	2.1
Dec	250.48	204.39	217.03	-1.3	0.4	-0.1	-1.9	3.6	1.8
2015 Jan	245.38	204.57	215.77	-2.0	0.1	-0.6	-3.3	3.5	1.3
Feb	246.44	206.04	217.23	0.4	0.7	0.7	-3.0	3.9	1.6
Mar	258.09	206.24	220.40	4.7	0.1	1.5	-2.2	4.1	1.9
Apr	278.42	206.91	226.36	7.9	0.3	2.7	2.2	4.5	3.6
May	281.23	206.44	226.71	1.0	-0.2	0.2	6.6	4.2	4.9
Jun	270.25	207.58	224.75	-3.9	0.6	-0.9	6.2	4.4	4.9
July	267.14	209.97	225.64	-1.2	1.2	0.4	6.8	5.1	5.4
Aug	268.66	211.09	226.85	0.6	0.5	0.5	5.1	4.7	4.8
Sep	284.52	213.58	232.83	5.9	1.2	2.6	10.5	5.7	7.2
Oct	299.12	214.41	237.35	5.1	0.4	1.9	16.4	5.3	8.8
Nov	297.38	214.62	237.07	-0.6	0.1	-0.1	17.2	5.4	9.1
Dec	291.86	216.48	237.13	-1.9	0.9	0.0	16.5	5.9	9.3

Source: Uganda Bureau of Statistics

Table 7: Composite CPI Breakdown for Food Crops, Other Goods and Services (Base 2005/6=100)

		Food Crops	Other Goods	Services	All items index	Monthly percentage changes				Annual percentage changes				
						Food Crops	Other Goods	Services	All item index	Food Crops	Other Goods	Services	All items index	
Weights		13.4511	40.7911	45.7578	100.0000									
Calendar year														
	2013	227.26	231.21	178.91	207.17					2.6	4.7	7.5	5.5	
	2014	252.54	233.33	188.94	216.05					11.1	0.9	5.6	4.3	
	2015	266.96	244.56	199.46	227.34					5.7	4.8	5.6	5.2	
Financial year														
	2012/2013	215.57	224.57	172.95	200.18					0.9	2.9	11.0	5.6	
	2013/2014	250.93	232.66	184.52	213.58					16.4	3.6	6.7	6.7	
	2014/2015	251.13	236.72	193.62	219.31					0.1	1.7	4.9	2.7	
Monthly														
	2012	Jun	225.91	220.49	166.07	196.99	-5.0	-0.7	1.5	-0.4	11.3	20.5	17.7	18.0
		Jul	212.51	218.76	167.90	195.27	-5.9	-0.8	1.1	-0.9	7.5	13.6	18.0	14.3
		Aug	217.48	219.27	168.12	196.25	2.3	0.2	0.1	0.5	12.8	7.8	16.7	11.9
		Sep	222.59	219.44	169.93	197.82	2.4	0.1	1.1	0.8	6.3	-1.0	13.5	5.5
		Oct	223.88	220.17	170.45	198.33	0.6	0.3	0.3	0.3	4.4	-1.7	12.5	4.4
		Nov	227.28	219.98	171.99	199.44	1.5	-0.1	0.9	0.6	7.5	-2.2	13.1	4.9
		Dec	217.07	222.11	173.98	199.76	-4.5	1.0	1.2	0.2	7.3	-0.8	12.2	5.3
	2013	Jan	202.11	225.75	173.96	199.25	-6.9	1.6	0.0	-0.3	3.0	1.2	10.1	4.9
		Feb	197.67	229.22	174.15	200.15	-2.2	1.5	0.1	0.5	-6.2	3.0	7.4	3.5
		Mar	205.41	230.32	174.66	201.89	3.9	0.5	0.3	0.9	-8.5	5.0	7.6	4.0
		Apr	223.48	230.02	175.92	204.73	8.8	-0.1	0.7	1.4	-7.4	3.5	7.9	3.4
		May	225.43	229.57	176.37	205.12	0.9	-0.2	0.3	0.2	-5.2	3.4	7.8	3.7
		Jun	211.89	230.19	177.92	204.11	-6.0	0.3	0.9	-0.5	-6.2	4.4	7.1	3.6
		Jul	211.86	231.26	179.36	205.30	0.0	0.5	0.8	0.6	-0.3	5.7	6.8	5.1
		Aug	245.43	231.58	180.49	210.61	15.8	0.1	0.6	2.6	12.9	5.6	7.4	7.3
		Sep	258.55	234.11	182.69	214.35	5.3	1.1	1.2	1.8	16.2	6.7	7.5	8.4
		Oct	255.83	234.25	183.25	214.35	-1.1	0.1	0.3	0.0	14.3	6.4	7.5	8.1
		Nov	244.81	234.52	183.44	212.95	-4.3	0.1	0.1	-0.7	7.7	6.6	6.7	6.8
		Dec	244.70	233.75	184.74	213.20	0.0	-0.3	0.7	0.1	12.7	5.2	6.2	6.7
	2014	Jan	245.19	232.06	185.43	213.07	0.2	-0.7	0.4	-0.1	21.3	2.8	6.6	6.9
		Feb	247.40	232.41	186.21	213.83	0.9	0.2	0.4	0.4	25.2	1.4	6.9	6.8
		Mar	263.55	232.91	186.30	216.29	6.5	0.2	0.0	1.1	28.3	1.1	6.7	7.1
		Apr	280.30	232.26	186.81	218.49	6.4	-0.3	0.3	1.0	25.4	1.0	6.2	6.7
		May	265.19	231.55	187.27	216.22	-5.4	-0.3	0.2	-1.0	17.6	0.9	6.2	5.4
		Jun	248.31	231.27	188.24	214.26	-6.4	-0.1	0.5	-0.9	17.2	0.5	5.8	5.0
		Jul	239.14	233.09	188.62	214.14	-3.7	0.8	0.2	-0.1	12.9	0.8	5.2	4.3
		Aug	249.20	233.23	190.88	216.55	4.2	0.1	1.2	1.1	1.5	0.7	5.8	2.8
		Sep	253.73	234.01	190.82	217.27	1.8	0.3	0.0	0.3	-1.9	0.0	4.4	1.4
		Oct	253.80	235.50	191.69	218.14	0.0	0.6	0.5	0.4	-0.8	0.5	4.6	1.8
		Nov	246.65	235.56	191.85	217.33	-2.8	0.0	0.1	-0.4	0.8	0.4	4.6	2.1
		Dec	238.04	236.12	193.17	217.03	-3.5	0.2	0.7	-0.1	-2.7	1.0	4.6	1.8
	2015	Jan	229.29	235.42	193.62	215.77	-3.7	-0.3	0.2	-0.6	-6.5	1.4	4.4	1.3
		Feb	230.19	236.65	195.14	217.23	0.4	0.5	0.8	0.7	-7.0	1.8	4.8	1.6
		Mar	247.64	238.54	195.32	220.40	7.6	0.8	0.1	1.5	-6.0	2.4	4.8	1.9
		Apr	280.11	240.24	197.20	226.36	13.1	0.7	1.0	2.7	-0.1	3.4	5.6	3.6
		May	282.19	240.97	197.15	226.71	0.7	0.3	0.0	0.2	6.4	4.1	5.3	4.9
		June	263.39	241.30	198.05	224.75	-6.7	0.1	0.5	-0.9	6.1	4.3	5.2	4.9
		July	253.20	244.73	199.86	225.64	-3.9	1.4	0.9	0.4	5.9	5.0	6.0	5.4
		Aug	253.69	246.45	200.77	226.85	0.2	0.7	0.5	0.5	1.8	5.7	5.2	4.8
		Sep	279.64	248.98	203.65	232.83	10.2	1.0	1.4	2.6	10.2	6.4	6.7	7.2
		Oct	304.98	251.30	203.73	237.35	9.1	0.9	0.0	1.9	20.2	6.7	6.3	8.8
		Nov	296.80	253.77	203.53	237.07	-2.7	1.0	-0.1	-0.1	20.3	7.7	6.1	9.1
		Dec	282.37	256.35	205.50	237.13	-4.9	1.0	1.0	0.0	18.6	8.6	6.4	9.3

Source: Uganda Bureau of Statistics

Table 8: Consumer Price Index - Kampala High Income (Base: 2005/2006 =100)

		Food	Beverages and tobacco	Clothing and footwear	Rent, Fuel and utilities	Household and personal goods	Transport and communication	Education	Health, entertainment & Others	All items index	Monthly % change	Annual % change
Weights		20.0031	2.7960	5.0827	15.7135	4.0389	14.1332	18.7364	19.4960	100.0000		
Calendar year												
	2013	242.88	196.26	205.99	230.75	204.92	143.94	162.74	219.68	202.74		6.8
	2014	254.23	197.63	219.79	235.39	211.70	149.03	168.86	232.07	211.03		4.1
	2015	274.49	204.15	235.44	245.81	219.84	148.04	177.27	243.82	221.76		5.1
Financial year												
	2012/2013	231.14	186.58	194.53	226.45	197.71	139.54	159.54	209.72	195.41		8.1
	2013/2014	254.41	197.30	214.77	231.26	208.31	146.99	166.57	227.11	208.34		6.6
	2014/2015	258.60	199.77	223.99	240.09	215.67	149.72	172.48	234.19	214.27		2.8
Monthly												
	2012											
	Jun	230.82	180.02	182.34	213.57	193.33	130.77	156.81	199.41	188.58	-0.3	20.2
	Jul	223.09	179.71	181.61	219.53	190.94	131.11	155.65	200.11	187.79	-0.4	17.4
	Aug	226.13	177.49	184.56	219.90	190.93	132.38	155.77	200.72	188.87	0.6	14.9
	Sep	229.99	176.14	185.56	222.84	192.67	133.14	160.76	203.77	191.82	1.6	7.7
	Oct	233.48	179.15	187.39	223.50	193.14	133.71	161.06	203.50	192.91	0.6	7.2
	Nov	231.92	176.63	194.89	223.84	195.40	140.32	161.22	204.51	194.21	0.7	8.0
	Dec	230.74	183.98	196.84	221.60	196.76	152.21	161.22	208.93	196.53	1.2	7.8
	2013											
	Jan	225.03	188.30	197.38	231.91	197.85	141.60	160.48	212.92	196.33	-0.1	6.3
	Feb	223.65	191.29	197.99	232.78	198.88	141.15	158.64	215.10	196.37	0.0	4.7
	Mar	230.24	196.57	198.23	232.52	199.98	142.06	158.81	215.10	198.01	0.8	6.3
	Apr	240.13	196.20	202.45	231.06	204.31	142.32	158.99	215.93	200.37	1.2	6.2
	May	240.74	196.79	202.49	230.11	205.38	142.04	158.50	218.02	200.68	0.2	6.1
	Jun	238.54	196.70	205.01	227.77	206.32	142.45	163.37	218.02	201.01	0.2	6.6
	Jul	235.47	196.98	207.56	232.83	205.34	141.65	163.24	218.76	201.29	0.1	7.2
	Aug	250.45	198.02	208.85	229.16	204.98	144.55	162.95	218.76	204.15	1.4	8.1
	Sep	262.34	198.72	208.86	231.40	206.60	144.57	166.66	223.82	208.65	2.2	8.8
	Oct	256.97	199.26	212.90	229.31	208.05	145.78	167.10	223.81	207.78	-0.4	7.7
	Nov	256.35	199.17	215.12	229.46	209.04	145.84	167.21	225.66	208.21	0.2	7.2
	Dec	254.65	197.17	215.09	230.72	212.51	153.31	166.97	230.32	210.08	0.9	6.9
	2014											
	Jan	249.30	194.93	215.86	230.06	210.83	149.60	167.16	230.67	208.39	-0.8	6.1
	Feb	249.49	195.39	216.50	232.09	208.14	148.75	167.27	230.71	208.59	0.1	6.2
	Mar	259.75	197.33	216.48	231.00	208.01	149.30	166.45	230.71	210.44	0.9	6.3
	Apr	267.08	196.19	220.05	233.54	207.68	149.10	166.61	230.71	212.45	1.0	6.0
	May	261.32	196.49	221.01	231.50	208.41	146.23	166.64	230.34	210.59	-0.9	4.9
	Jun	249.74	197.97	218.93	234.11	210.42	145.18	170.61	231.01	209.43	-0.6	4.2
	Jul	241.11	198.11	217.23	235.73	211.68	145.47	170.67	231.40	208.05	-0.7	3.4
	Aug	251.55	198.81	218.32	232.52	213.32	150.53	170.81	232.39	210.71	1.3	3.2
	Sep	257.28	198.69	218.68	237.10	215.18	150.71	170.65	232.84	212.75	1.0	2.0
	Oct	258.75	201.39	222.51	243.09	215.09	149.48	170.53	233.41	214.17	0.7	3.1
	Nov	253.36	198.58	224.02	241.96	216.21	150.36	169.61	234.59	213.14	-0.5	2.4
	Dec	251.99	197.69	227.83	241.98	215.47	153.70	169.29	236.04	213.70	0.3	1.7
	2015											
	Jan	247.43	203.15	223.64	238.62	216.07	150.82	169.41	236.39	211.91	-0.8	1.7
	Feb	245.00	199.31	222.66	239.72	217.01	150.12	175.43	233.91	212.02	0.1	1.6
	Mar	261.11	199.85	224.82	242.41	217.74	149.26	175.55	234.07	215.75	1.8	2.5
	Apr	278.51	200.17	227.03	242.21	219.01	149.67	175.60	235.31	219.68	1.8	3.4
	May	285.07	200.16	228.87	241.63	215.57	147.85	175.64	233.32	220.22	0.2	4.6
	Jun	271.43	201.31	232.28	244.15	215.66	148.73	176.58	236.65	219.05	-0.5	4.6
	July	269.70	208.13	234.90	246.93	217.50	151.59	177.13	240.88	220.87	0.8	6.2
	Aug	270.27	209.12	239.58	244.58	221.28	152.19	177.16	243.07	221.55	0.3	5.1
	Sep	283.17	209.34	244.64	244.50	224.15	151.12	181.14	252.42	226.91	2.4	6.7
	Oct	294.98	206.27	246.76	254.22	223.51	140.83	181.02	258.56	230.52	1.6	7.6
	Nov	296.93	206.34	247.52	255.40	224.56	140.45	181.26	255.25	230.52	0.0	8.2
	Dec	290.26	206.63	252.56	255.30	225.97	143.86	181.38	265.97	232.09	0.7	8.6

Source: Uganda Bureau of Statistics.

Table 9: Consumer Price Index Kampala Middle & Low Income (Base: 2005/2006 =100)

	Food	Beverages and tobacco	Clothing and footwear	Rent, Fuel and utilities	Household and personal goods	Transport and communication	Education	Health, entertainment & Others	All items index	Monthly % change	Annual % change
Weights	28.0629	5.4108	3.8659	17.3887	5.1247	12.4591	11.0069	16.6810	100.0000		
Calendar year											
2013	236.39	200.80	217.50	198.63	226.92	134.04	166.39	193.24	199.03		5.3
2014	247.90	201.65	226.07	205.94	229.67	139.94	171.78	207.34	207.73		4.4
2015	262.58	205.42	271.42	215.60	233.39	140.83	181.23	225.53	219.86		5.8
Financial year											
2012/2013	225.33	188.26	207.71	191.16	225.74	130.68	162.52	185.73	191.41		3.6
2013/2014	249.59	202.09	222.27	203.13	228.53	137.30	169.79	199.76	205.72		7.5
2014/2015	247.53	203.03	246.01	208.68	230.82	142.05	175.87	216.66	211.27		2.7
Monthly											
2012 Jun	233.80	177.83	209.63	182.98	225.36	127.58	159.47	177.30	189.73	-0.5	16.1
Jul	222.49	175.31	201.98	182.87	226.84	127.54	158.86	177.29	186.10	-1.9	11.9
Aug	225.19	176.17	199.99	187.86	227.31	127.46	159.08	177.28	187.73	0.9	9.6
Sep	223.53	174.73	201.79	187.47	227.64	127.67	163.36	180.52	188.25	0.3	2.4
Oct	224.47	177.91	201.09	187.92	225.00	127.84	162.60	180.62	188.56	0.2	0.5
Nov	227.18	178.75	211.19	189.30	223.69	129.92	162.44	185.56	190.99	1.3	2.4
Dec	222.55	184.92	211.12	188.15	222.56	139.49	162.40	185.79	190.99	0.0	2.2
2013 Jan	219.45	194.32	210.39	194.06	224.88	129.64	163.36	189.13	191.18	0.1	3.1
Feb	220.78	195.67	206.72	193.60	225.87	128.51	162.84	189.58	191.33	0.1	2.2
Mar	224.24	197.87	210.62	192.86	226.46	131.79	163.07	190.39	193.05	0.9	2.3
Apr	232.83	199.70	212.92	196.20	228.45	132.29	162.89	190.80	196.44	1.8	1.7
May	234.07	200.22	212.35	194.68	225.55	132.14	162.28	190.84	196.30	-0.1	3.0
Jun	227.22	203.52	212.33	198.92	224.65	133.87	167.07	190.97	196.01	-0.1	3.3
Jul	228.26	202.74	211.81	202.92	227.05	133.07	167.16	193.68	197.42	0.7	6.1
Aug	247.98	202.04	211.85	202.59	226.86	136.16	167.02	193.58	203.21	2.9	8.2
Sep	256.51	204.02	218.42	203.60	228.44	136.19	170.31	196.90	207.14	1.9	10.0
Oct	254.96	202.84	229.09	201.46	228.52	137.52	170.04	196.91	206.82	-0.2	9.7
Nov	245.87	203.87	233.86	202.03	228.25	137.43	169.97	197.08	204.60	-1.1	7.1
Dec	244.53	202.74	239.63	200.68	228.05	139.88	170.64	198.96	204.84	0.1	7.2
2014 Jan	245.19	199.23	237.49	201.62	228.98	137.46	170.61	202.70	205.28	0.2	7.4
Feb	243.81	202.49	229.04	206.73	228.30	138.19	169.21	202.02	205.42	0.1	7.4
Mar	254.09	199.80	216.12	206.80	231.03	137.93	170.37	200.93	207.73	1.1	7.6
Apr	266.42	201.67	214.80	204.67	229.47	138.15	169.24	200.71	210.65	1.4	7.2
May	255.40	201.71	215.27	202.67	229.13	137.78	169.20	206.80	208.18	-1.2	6.1
Jun	251.99	201.89	209.91	201.84	228.24	137.82	173.67	206.80	207.33	-0.4	5.8
Jul	239.42	203.09	216.24	204.59	231.83	138.03	173.60	206.85	204.80	-1.2	3.7
Aug	244.56	203.27	225.28	203.15	231.63	142.83	173.87	208.26	207.21	1.2	2.0
Sep	248.09	201.03	231.91	207.82	230.85	142.60	173.48	209.03	209.16	0.9	1.0
Oct	245.00	201.81	235.52	215.09	228.57	141.89	173.74	213.74	210.35	0.6	1.7
Nov	241.85	201.15	239.59	208.76	228.76	141.90	172.56	215.05	208.58	-0.8	1.9
Dec	238.95	202.61	241.66	207.53	229.20	144.63	171.85	215.13	208.02	-0.3	1.6
2015 Jan	234.90	203.73	244.26	211.99	231.60	141.75	172.30	217.40	208.01	0.0	1.3
Feb	237.26	205.12	247.98	212.33	232.18	142.16	179.01	217.54	209.79	0.9	2.1
Mar	242.29	203.80	257.16	209.78	232.66	142.06	179.25	218.24	211.20	0.7	1.7
Apr	267.01	202.86	265.44	209.74	231.26	142.24	179.64	226.55	219.78	4.1	4.3
May	270.79	203.36	270.53	207.03	230.84	141.90	179.86	226.04	220.46	0.3	5.9
Jun	260.23	204.57	276.55	206.35	230.43	142.59	181.32	226.04	217.91	-1.2	5.1
July	253.96	207.85	278.77	216.04	232.32	143.26	181.18	225.96	218.25	0.2	6.6
Aug	257.97	209.04	281.42	216.20	233.75	143.60	181.19	226.27	219.74	0.7	6.0
Sep	271.13	206.34	282.32	218.48	234.70	144.20	185.28	229.65	224.85	2.3	7.5
Oct	287.61	206.59	283.32	224.84	235.82	134.19	185.08	230.42	229.55	2.1	9.1
Nov	284.25	206.07	282.29	226.51	236.90	134.26	185.28	231.05	229.02	-0.2	9.8
Dec	283.51	205.77	287.04	227.95	238.27	137.74	185.33	231.25	229.78	0.3	10.5

Source: Uganda Bureau of Statistics.

Table 10: Consumer Price Index Jinja (Base: 2005/2006 =100)

		Food	Beverages and tobacco	Clothing and footwear	Rent, Fuel and utilities	Household and personal goods	Transport and communication	Education	Health, entertainment & Others	All items index	Monthly % change	Annual % change	
Weights Calendar		33.0273	3.3065	3.9611	10.587	4.9449	13.7220	15.0840	15.3664	100.00			
	2013	264.13	212.99	197.88	240.21	255.74	122.74	200.17	201.95	218.27		5.3	
	2014	271.33	209.36	201.40	253.32	263.19	129.86	216.49	214.94	227.85		4.4	
	2015	286.19	217.60	213.25	271.26	268.61	129.70	223.35	232.45	239.37		5.1	
Financial year													
	2012/2013	274.5	210.2	200.5	245.0	259.7	125.7	210.2	205.2	224.8		6.4	
	2013/2014	271.1	214.8	205.7	260.1	266.6	132.3	219.0	224.1	231.1		2.8	
	2014/2015	274.5	210.2	200.5	245.0	259.7	125.7	210.2	205.2	224.8		6.4	
Monthly													
2012	Jun	268.16	184.63	177.94	225.09	243.96	116.76	199.77	189.88	212.95	2.8	13.5	
	Jul	260.82	182.21	175.85	232.44	245.47	117.67	199.55	190.17	211.35	-0.8	11.8	
	Aug	248.00	180.77	174.24	224.23	247.03	117.92	200.74	187.25	205.98	-2.5	8.7	
	Sept	252.64	179.95	179.64	225.97	245.41	118.93	192.44	189.96	207.10	0.5	3.2	
	Oct	253.26	192.39	181.06	237.43	243.46	119.43	194.20	191.43	209.45	1.1	5.4	
	Nov	247.80	187.26	190.73	233.06	243.19	119.12	193.49	191.45	207.24	-1.1	3.2	
	Dec	249.78	184.89	196.58	230.99	245.52	125.31	193.49	195.22	209.37	1.0	4.1	
	2013	Jan	241.06	200.75	195.21	225.37	250.16	120.59	193.39	203.03	207.13	-1.1	3.7
		Feb	255.64	213.71	194.01	247.01	249.06	120.77	197.15	198.61	214.48	3.5	4.8
		Mar	260.64	214.07	195.60	237.41	249.93	122.38	196.86	199.27	215.51	0.5	4.4
		Apr	258.96	213.96	194.57	241.65	252.76	120.64	196.86	201.86	215.66	0.1	4.4
		May	259.94	214.90	193.65	241.56	257.35	119.62	196.46	203.25	216.21	0.3	4.4
Jun		255.74	214.59	194.71	243.24	257.20	119.64	199.01	204.47	215.60	-0.3	1.2	
Jul		261.09	215.40	195.05	251.43	257.87	120.98	199.75	201.54	218.15	1.2	3.2	
Aug		267.94	213.23	196.76	240.12	259.60	124.41	199.50	200.11	219.51	0.6	6.6	
Sept		269.77	212.75	200.56	243.10	259.15	124.58	206.04	200.98	221.69	1.0	7.0	
Oct		285.70	214.74	205.48	238.25	257.87	125.52	206.07	201.80	226.89	2.3	8.3	
Nov		277.07	214.26	203.61	237.96	258.38	125.82	205.43	203.04	224.08	-1.2	8.1	
Dec		276.05	213.51	205.33	235.47	259.52	127.93	205.57	205.48	224.27	0.1	7.1	
2014	Jan	274.38	207.58	204.33	246.94	258.86	124.89	206.55	210.82	225.21	0.4	8.7	
	Feb	274.46	207.50	202.43	252.55	261.23	125.10	219.31	205.12	226.95	0.8	5.8	
	Mar	284.42	210.64	197.67	252.65	259.20	126.33	218.54	210.39	230.93	1.8	7.2	
	Apr	275.93	204.98	196.11	246.26	260.20	127.60	218.14	208.57	227.08	-1.7	5.3	
	May	278.85	201.80	199.89	246.79	261.00	127.55	219.38	208.67	228.38	0.6	5.6	
	Jun	268.60	206.58	198.37	249.04	263.12	127.46	218.64	205.71	224.86	-1.5	4.3	
	Jul	280.98	208.00	198.30	258.69	262.28	128.05	218.64	209.92	230.70	2.6	5.8	
	Aug	270.03	209.35	201.46	260.48	261.82	133.91	218.53	222.51	230.14	-0.2	4.8	
	Sep	266.51	217.02	204.05	250.82	265.14	133.92	215.29	225.34	228.42	-0.7	3.0	
	Oct	263.88	214.05	203.41	261.65	269.62	134.51	215.44	223.38	228.60	0.1	0.8	
	Nov	263.19	211.25	203.65	257.83	268.20	134.51	214.52	223.36	227.68	-0.4	1.6	
	Dec	254.73	213.55	207.15	256.11	267.58	134.48	214.87	225.48	225.26	-1.1	0.4	
2015	Jan	253.36	210.93	207.42	256.87	266.42	132.90	214.59	222.13	223.98	-0.6	-0.5	
	Feb	264.32	213.93	205.97	262.96	266.40	131.56	223.53	222.68	229.53	2.5	1.1	
	Mar	271.12	219.72	205.88	270.06	267.54	131.17	223.65	224.71	233.05	1.5	0.9	
	Apr	288.60	220.89	209.40	262.43	268.68	131.22	223.73	229.53	239.01	2.6	5.3	
	May	289.79	219.80	210.51	260.77	268.07	130.66	222.91	229.70	239.03	0.0	4.7	
	Jun	287.10	218.64	211.49	262.32	267.45	131.04	222.49	229.90	238.29	-0.3	6.0	
	July	286.23	217.78	212.94	269.33	268.33	133.64	222.04	231.04	239.29	0.4	3.7	
	Aug	283.09	218.45	215.67	271.63	269.42	132.98	222.74	231.82	238.81	-0.2	3.8	
	Sep	297.00	217.09	217.93	273.88	268.98	132.95	225.94	239.32	245.30	2.7	7.4	
	Oct	302.74	218.98	219.04	282.97	269.10	121.26	226.36	243.26	247.33	0.8	8.2	
	Nov	305.17	215.68	219.42	292.04	269.87	121.48	226.45	242.14	248.91	0.6	9.3	
	Dec	305.70	219.26	223.28	289.91	273.02	125.58	225.77	243.17	249.91	0.4	10.9	

Source: Uganda Bureau of Statistics.

Table 11: Consumer Price Index Mbale (Base: 2005/2006 =100)

		Food	Beverages and tobacco	Clothing and footwear	Rent, Fuel and utilities	Household and personal goods	Transport and communication	Education	Health, entertainment & Others	All items index	Monthly % change	Annual % change
Weights		30.3355	4.5287	3.7102	15.4362	4.7934	13.0972	13.1049	14.9938	100.0000		
Calendar year												
2013		264.48	201.50	158.60	213.65	215.61	135.26	180.70	208.42	211.20		3.6
2014		272.74	204.92	162.88	220.71	219.77	141.54	195.25	209.76	218.24		3.3
2015		287.78	207.62	178.89	234.26	226.31	143.67	202.45	213.83	227.76		4.4
Financial year												
2012/2013		257.10	188.73	152.92	209.38	213.16	131.40	179.73	204.16	206.12		5.1
2013/2014		272.1	203.8	162.2	215.8	217.4	138.1	187.6	209.1	215.5		4.6
2014/2015		276.5	206.0	168.5	227.2	222.2	143.5	198.7	212.2	221.9		2.9
Monthly												
2012	Jun	270.15	175.54	157.13	200.91	207.40	126.46	178.56	194.12	205.76	-0.3	19.0
	Jul	255.14	176.18	152.12	201.25	209.49	126.51	179.95	192.29	201.11	-2.3	14.2
	Aug	251.62	176.08	151.73	209.28	211.25	126.84	180.75	199.40	202.56	0.7	13.5
	Sep	250.32	176.45	149.95	211.32	211.99	129.63	180.38	201.33	203.08	0.3	5.2
	Oct	258.78	177.08	149.46	210.78	212.43	130.11	180.31	202.47	205.81	1.3	6.9
	Nov	258.62	177.90	151.66	206.91	211.05	130.08	178.23	205.01	205.33	-0.2	6.1
	Dec	254.83	183.45	153.00	205.06	211.59	130.39	179.02	206.25	204.55	-0.4	5.0
2013	Jan	252.77	198.29	151.74	206.58	213.95	133.03	177.99	207.62	205.31	0.4	3.3
	Feb	251.35	199.35	151.09	216.68	213.64	132.14	180.40	207.86	206.68	0.7	1.0
	Mar	255.02	201.21	152.99	212.08	215.05	134.41	180.54	206.81	207.47	0.4	1.8
	Apr	262.74	199.91	155.92	209.07	215.79	134.94	179.93	206.49	209.37	0.9	2.3
	May	265.93	199.55	158.39	211.68	216.27	134.74	178.27	206.41	210.58	0.6	2.0
	Jun	268.07	199.28	156.98	211.82	215.44	134.00	181.02	207.97	211.65	0.5	2.9
	Jul	262.18	199.77	157.89	218.39	216.86	133.51	180.74	208.40	210.96	-0.3	4.9
	Aug	266.26	204.69	158.69	218.06	216.37	135.65	179.95	207.87	212.48	0.7	4.9
	Sep	273.94	204.21	162.50	213.30	215.36	135.45	182.65	210.06	214.80	1.1	5.8
	Oct	274.36	203.84	165.33	215.00	215.34	137.86	182.54	210.07	215.58	0.4	4.7
	Nov	273.12	203.68	166.26	217.28	215.40	138.61	182.20	210.24	215.66	0.0	5.0
	Dec	268.01	204.24	165.38	213.82	217.86	138.74	182.24	211.29	213.87	-0.8	4.6
2014	Jan	267.47	205.13	165.91	217.61	217.42	139.91	182.67	209.53	214.28	0.2	4.4
	Feb	266.04	203.88	163.75	217.40	216.51	139.36	194.98	208.28	214.98	0.3	4.0
	Mar	270.59	204.08	160.28	219.74	217.64	139.34	195.83	208.33	216.77	0.8	4.5
	Apr	278.66	206.30	159.59	214.80	220.14	139.73	194.91	208.18	218.56	0.8	4.4
	May	283.92	202.89	161.25	213.54	219.59	139.69	195.92	208.08	219.96	0.6	4.5
	Jun	280.23	203.02	159.13	210.35	220.69	139.22	196.84	208.50	218.45	-0.7	3.2
	Jul	279.27	205.15	158.72	225.66	221.13	138.62	196.24	208.50	220.46	0.9	4.5
	Aug	274.89	205.96	161.15	226.51	221.33	144.22	196.64	209.36	220.32	-0.1	3.7
	Sep	268.89	205.73	163.63	233.23	219.12	144.56	197.77	209.76	219.76	-0.3	2.3
	Oct	268.40	205.72	165.44	220.67	220.57	145.05	196.95	212.20	218.14	-0.7	1.2
	Nov	267.51	205.51	167.53	225.00	222.12	144.43	197.12	213.20	218.77	0.3	1.4
	Dec	267.08	205.71	168.20	224.05	220.92	144.37	197.12	213.20	218.46	-0.1	2.1
2015	Jan	262.62	205.77	169.19	227.03	222.04	144.50	197.97	212.73	217.72	-0.3	1.6
	Feb	266.04	206.12	168.87	232.76	223.02	143.36	201.10	213.35	220.04	1.1	2.4
	Mar	271.28	206.10	171.16	231.44	224.70	143.48	201.10	213.35	221.61	0.7	2.2
	Apr	291.17	206.41	173.92	228.95	224.35	142.84	200.31	214.51	227.34	2.6	4.0
	May	305.77	206.50	176.62	226.14	223.59	142.90	199.65	213.01	231.10	1.7	5.1
	Jun	295.64	207.90	177.34	225.18	223.92	143.33	202.98	213.23	228.51	-1.1	4.6
	July	280.80	207.78	179.44	236.12	224.07	144.35	203.99	213.40	226.08	-1.1	2.5
	Aug	281.65	207.98	180.71	238.35	225.52	147.35	204.38	213.89	227.32	0.5	3.2
	Sep	289.28	210.35	185.10	238.00	227.02	148.61	204.41	214.61	230.20	1.3	4.7
	Oct	300.60	208.45	187.09	246.09	231.96	141.14	203.72	214.61	234.04	1.7	7.3
	Nov	303.05	209.08	188.00	240.99	231.72	141.24	205.15	214.61	234.24	0.1	7.1
	Dec	305.46	209.03	189.23	240.13	233.78	140.93	204.71	214.61	234.89	0.3	7.5

Source: Uganda Bureau of Statistics.

Table 12: Consumer Price Index Masaka (Base: 2005/2006 =100)

		Food	Beverages and tobacco	Clothing and footwear	Rent, Fuel and utilities	Household and personal goods	Transport and communication	Education	Health, entertainment & Others	All items index	Monthly % change	Annual % change
Weights		28.0398	5.5776	4.5968	10.6448	4.0282	14.4800	15.2928	17.3400	100.0000		
Calendar year												
	2013	238.10	200.17	171.72	240.29	212.26	147.25	193.11	230.25	210.73		5.5
	2014	251.00	200.13	174.41	243.92	218.92	149.09	208.42	245.86	220.44		4.6
	2015	269.62	202.72	189.38	264.11	230.15	158.90	212.23	260.37	233.61		6.0
Financial year												
	2012/2013	225.66	186.19	161.55	236.07	210.00	147.34	187.02	223.25	203.32		6.2
	2013/2014	255.6	201.1	174.9	244.4	214.4	145.8	203.0	238.2	219.0		7.7
	2014/2015	248.7	200.7	178.5	249.9	223.2	155.7	209.7	252.2	223.1		1.9
Monthly												
	2012											
	Jun	223.22	171.85	155.95	233.12	207.44	147.74	182.13	207.50	197.74	-1.9	19.2
	Jul	212.30	172.67	156.04	238.86	209.30	149.65	183.95	214.06	197.11	-0.3	15.4
	Aug	223.69	172.04	153.65	240.14	207.80	145.84	184.45	216.28	200.14	1.5	11.4
	Sep	236.89	171.93	151.01	231.19	207.50	145.50	185.86	219.08	203.40	1.6	6.8
	Oct	241.91	173.08	156.23	232.72	207.07	146.44	185.16	220.61	205.55	1.1	6.6
	Nov	244.69	178.65	157.38	233.45	209.58	147.20	187.74	220.61	207.38	0.9	7.1
	Dec	226.67	179.10	163.20	230.04	209.80	146.78	188.04	224.15	202.87	-2.2	6.8
	2013											
	Jan	214.25	192.93	162.49	248.20	210.44	147.66	187.83	222.41	201.87	-0.5	7.2
	Feb	210.22	193.43	163.52	240.35	210.57	147.37	187.86	223.45	200.13	-0.9	3.1
	Mar	216.21	199.29	166.41	239.10	211.69	147.83	187.32	226.50	202.70	1.3	3.7
	Apr	239.15	199.39	167.62	238.98	211.98	147.93	187.79	229.54	209.80	3.5	3.8
	May	228.16	200.84	170.52	236.57	212.41	147.69	188.20	230.62	206.91	-1.4	2.6
	Jun	213.75	200.97	170.58	223.27	211.83	148.23	190.00	231.74	201.99	-2.4	2.1
	Jul	222.87	208.56	168.08	229.65	212.65	147.24	190.51	230.74	205.33	1.7	4.2
	Aug	253.70	200.82	174.26	242.61	213.57	149.23	189.76	229.57	215.21	4.8	7.5
	Sep	260.92	200.45	179.89	245.26	213.45	149.12	200.54	229.61	219.39	1.9	7.9
	Oct	281.60	203.10	180.52	241.78	213.47	150.31	202.20	233.31	226.06	3.0	10.0
	Nov	262.80	202.83	178.95	247.30	212.66	142.20	202.18	237.10	220.74	-2.4	6.4
	Dec	253.58	199.37	177.81	250.42	212.37	142.16	203.13	238.37	218.59	-1.0	7.8
	2014											
	Jan	255.63	200.55	175.37	249.11	211.88	142.42	202.65	241.74	219.51	0.4	8.7
	Feb	252.76	199.23	175.92	243.43	213.47	142.31	208.20	243.11	219.18	-0.1	9.5
	Mar	256.75	200.03	170.07	246.49	214.73	143.38	208.87	243.11	220.71	0.7	8.9
	Apr	278.14	199.13	172.46	245.26	218.45	147.11	209.07	240.66	226.93	2.8	8.2
	May	254.77	199.98	172.75	247.54	218.39	147.27	208.62	244.95	221.38	-2.4	7.0
	Jun	233.32	198.94	172.32	243.43	218.23	146.34	209.78	245.74	215.03	-2.9	6.5
	Jul	239.79	200.40	170.64	241.10	219.27	147.46	209.53	246.08	216.82	0.8	5.6
	Aug	248.61	199.45	173.20	241.69	218.70	151.69	209.56	247.32	220.23	1.6	2.3
	Sep	247.76	200.96	173.98	231.94	218.44	154.28	208.62	245.65	219.00	-0.6	-0.2
	Oct	254.41	200.65	174.85	244.10	218.84	155.43	208.38	248.09	222.76	1.7	-1.5
	Nov	246.46	200.94	178.56	247.00	227.23	155.34	208.77	250.77	221.87	-0.4	0.5
	Dec	243.58	201.25	182.79	246.02	229.47	156.00	208.95	253.16	221.80	0.0	1.5
	2015											
	Jan	232.89	201.47	182.58	247.03	224.79	157.22	211.05	255.36	219.60	-1.0	0.0
	Feb	229.02	201.26	179.95	259.78	227.57	158.07	212.01	253.49	219.80	0.1	0.3
	Mar	246.76	201.93	181.28	256.00	226.18	159.73	211.89	253.52	224.64	2.2	1.8
	Apr	272.18	198.09	180.65	256.00	224.44	158.19	208.35	253.47	230.68	2.7	1.7
	May	266.08	200.38	179.97	260.58	221.55	155.81	207.93	259.73	230.12	-0.2	3.9
	Jun	257.47	201.28	183.51	267.02	222.04	159.15	210.97	259.85	229.59	-0.2	6.8
	July	262.15	203.75	189.88	261.58	230.66	161.82	211.23	259.63	231.49	0.8	6.8
	Aug	261.52	205.02	192.18	266.28	234.04	161.63	211.24	261.12	232.36	0.4	5.5
	Sep	293.59	204.15	194.44	263.48	235.51	162.42	213.87	262.74	241.96	4.1	10.5
	Oct	312.77	204.66	198.41	274.09	234.50	156.64	215.98	265.71	248.64	2.8	11.6
	Nov	303.37	205.51	202.75	276.68	238.58	157.68	216.14	268.34	247.32	-0.5	11.5
	Dec	297.70	205.09	206.93	280.84	241.94	158.50	216.14	271.41	247.13	-0.1	11.4

Source: Uganda Bureau of Statistics.

Table 13: Consumer Price Index Mbarara (Base: 2005/2006 =100)

	Food	Beverages and tobacco	Clothing and footwear	Rent, Fuel and utilities	Household and personal goods	Transport and communication	Education	Health, entertainment & Others	All items index	Monthly % change	Annual % change
Weights	28.3959	5.4676	4.6135	11.8075	3.5870	13.2070	17.0981	15.8234	100.0000		
Calendar year											
2013	247.94	195.00	188.22	263.78	219.69	133.72	181.13	231.63	214.06		7.0
2014	260.39	194.11	194.55	267.93	224.77	141.82	189.16	248.72	223.66		4.5
2015	280.42	197.23	211.05	265.71	225.97	141.65	198.53	277.51	236.19		5.6
Financial year											
2012/2013	236.16	182.48	179.67	254.68	215.49	130.63	175.67	218.83	205.04		6.7
2013/2014	263.2	195.5	193.2	265.2	222.7	138.3	184.9	243.9	222.1		8.3
2014/2015	261.1	195.5	199.1	266.7	224.9	143.6	193.7	258.3	226.6		2.0
Monthly											
2012											
Jun	226.55	171.19	182.24	233.83	210.44	130.01	170.48	207.66	196.43	-3.8	15.5
Jul	222.75	170.84	179.35	252.54	211.16	134.69	170.51	208.83	198.25	0.9	13.5
Aug	239.69	170.19	173.69	253.51	212.52	129.53	170.20	209.98	202.37	2.1	13.6
Sept	245.35	168.69	171.64	249.76	213.70	129.49	172.26	214.99	204.54	1.1	7.3
Oct	245.15	170.09	176.41	246.73	213.93	130.80	172.88	215.29	204.76	0.1	5.3
Nov	251.54	168.92	176.93	242.32	214.22	130.32	173.53	216.11	206.20	0.7	4.9
Dec	242.05	185.09	179.39	247.60	214.29	129.77	173.15	219.53	205.53	-0.3	7.4
2013											
Jan	223.77	191.81	179.74	246.36	216.71	131.88	173.33	219.31	200.94	-2.2	6.7
Feb	225.06	189.95	179.26	262.23	214.99	130.22	179.23	222.34	204.26	1.7	6.5
Mar	230.52	191.75	180.01	257.21	219.73	130.97	180.45	223.78	206.06	0.9	5.4
Apr	238.01	194.24	183.77	267.65	217.39	129.62	179.90	223.83	209.38	1.6	2.9
May	242.89	194.33	188.67	262.76	219.16	128.20	180.10	226.12	210.69	0.6	3.2
Jun	227.12	193.86	187.15	267.52	218.14	132.13	182.49	225.88	207.53	-1.5	5.6
Jul	236.38	198.33	187.79	267.80	220.84	133.13	182.34	226.91	210.84	1.6	6.4
Aug	269.65	198.51	189.32	271.39	223.22	136.77	183.55	235.48	222.92	5.7	10.2
Sept	277.77	197.16	191.42	267.71	221.88	135.21	183.11	244.28	225.87	1.3	10.4
Oct	276.19	195.23	194.21	266.72	221.10	138.90	183.00	243.46	225.64	-0.1	10.2
Nov	264.96	196.76	193.71	265.14	221.44	138.79	183.25	243.73	222.41	-1.4	7.9
Dec	262.92	198.06	203.64	262.82	221.64	138.81	182.87	244.41	222.14	-0.1	8.1
2014											
Jan	254.02	195.03	197.23	262.14	223.20	137.56	183.28	248.50	219.68	-1.1	9.3
Feb	252.99	193.20	194.00	263.05	222.57	138.54	187.12	248.57	220.02	0.2	7.7
Mar	271.77	194.90	188.87	260.36	221.92	140.99	186.43	247.40	224.89	2.2	9.1
Apr	282.43	195.54	193.10	262.13	223.15	142.08	186.63	246.63	228.45	1.6	9.1
May	261.95	190.51	193.37	263.21	226.87	138.71	186.72	251.44	222.97	-2.4	5.8
Jun	247.34	192.55	191.52	269.78	224.53	140.00	190.93	246.43	219.63	-1.5	5.8
Jul	247.57	195.41	191.25	270.43	224.86	140.40	191.02	246.43	220.00	0.2	4.3
Aug	261.47	193.82	196.94	275.46	225.51	144.77	191.07	246.43	225.33	2.4	1.1
Sep	265.29	195.71	197.87	271.01	225.66	144.88	191.59	246.60	226.17	0.4	0.1
Oct	262.12	194.50	195.62	271.25	227.07	145.26	191.53	246.40	225.19	-0.4	-0.2
Nov	265.04	194.46	196.49	275.66	226.06	144.31	192.20	248.60	226.87	0.7	2.0
Dec	252.74	193.74	198.32	270.64	225.87	144.38	191.43	261.15	224.69	-1.0	1.1
2015											
Jan	241.62	194.52	197.34	266.20	225.62	143.58	192.02	262.97	221.28	-1.5	0.7
Feb	243.44	198.99	200.09	263.27	224.99	144.47	195.73	264.66	222.82	0.7	1.3
Mar	264.55	196.07	201.02	261.56	225.11	142.34	195.53	267.35	228.61	2.6	1.7
Apr	288.95	196.15	203.63	257.20	224.05	143.01	196.64	268.33	235.54	3.0	3.1
May	279.13	195.96	205.43	258.44	222.93	142.22	197.62	270.62	233.36	-0.9	4.7
Jun	261.82	196.14	205.12	259.58	221.66	143.52	198.47	270.23	228.79	-2.0	4.2
July	260.93	197.33	213.74	259.73	225.26	143.21	198.51	273.42	229.61	0.4	4.4
Aug	264.28	195.92	218.57	261.96	225.55	144.15	198.48	283.66	232.72	1.4	3.3
Sep	307.68	198.99	218.91	262.59	228.29	145.04	201.67	290.64	247.17	6.2	9.3
Oct	339.24	199.07	218.92	277.76	228.78	135.78	202.55	292.40	257.15	4.0	14.2
Nov	320.74	198.82	221.47	277.47	229.86	136.00	202.55	293.21	252.16	-1.9	11.1
Dec	292.66	198.76	228.39	282.77	229.54	136.42	202.55	292.70	245.09	-2.8	9.1

Source: Uganda Bureau of Statistics.

Table 14: Consumer Price Index Gulu (Base: 2005/2006 =100)

	Food	Beverages and tobacco	Clothing and footwear	Rent, Fuel and utilities	Household and personal goods	Transport and communication	Education	Health, entertainment & Others	All items index	Monthly % change	Annual % change	
Weights	38.0052	8.5146	3.7431	15.6811	4.6634	5.9713	12.6084	10.8130	100.0000			
Calendar year												
2013	262.28	225.67	174.17	234.43	232.41	155.29	218.65	159.95	227.15		2.9	
2014	274.26	232.53	181.08	246.40	233.85	160.51	234.14	168.78	237.71		4.6	
2015	277.38	229.17	198.70	252.10	236.77	163.44	252.16	173.35	243.24		2.3	
Financial year												
2012/2013	255.94	218.88	166.76	233.74	227.40	155.91	211.99	155.52	222.26		3.7	
2013/2014	275.44	232.30	178.99	238.03	233.32	156.17	225.49	163.82	234.84		5.7	
2014/2015	269.59	230.52	186.25	250.92	234.62	163.82	241.51	172.63	238.24		1.4	
Monthly												
2012	Jun	274.88	202.03	165.32	251.81	215.38	156.94	204.86	147.61	228.55	0.2	20.2
	Jul	265.96	214.40	160.97	250.03	217.00	155.86	205.49	150.26	226.15	-1.1	13.3
	Aug	265.18	221.48	159.34	238.52	220.76	154.74	205.33	152.39	224.91	-0.5	8.4
	Sept	264.51	216.97	164.40	221.27	226.15	160.51	208.32	153.15	222.81	-0.9	7.6
	Oct	245.69	211.23	162.12	226.69	221.52	156.19	208.21	154.29	215.57	-3.3	1.7
	Nov	242.77	219.36	164.68	223.82	222.92	157.90	208.64	153.14	214.89	-0.3	1.1
	Dec	244.67	219.66	164.36	235.69	230.05	155.77	208.48	156.88	218.08	1.5	5.4
2013	Jan	249.77	215.81	168.33	231.10	231.22	147.91	208.07	157.75	218.75	0.3	6.6
	Feb	246.50	215.89	168.69	234.41	233.24	164.26	217.63	156.74	220.21	0.7	1.0
	Mar	253.97	215.96	170.66	232.77	232.31	155.87	218.69	156.74	222.46	1.0	2.0
	Apr	264.25	221.80	172.38	232.13	232.56	155.86	218.74	156.62	226.83	2.0	-0.3
	May	267.75	227.59	173.00	241.57	231.30	153.28	217.70	159.16	230.09	1.4	0.9
	Jun	260.24	226.45	172.23	236.93	229.77	152.82	218.56	159.17	226.39	-1.6	-0.9
	Jul	259.86	220.89	172.79	232.65	231.48	152.87	218.50	160.14	225.31	-0.5	-0.4
	Aug	275.55	233.62	173.16	235.75	231.04	155.79	216.85	161.46	232.94	3.4	3.6
	Sept	280.38	225.61	176.31	231.98	235.76	157.41	222.86	163.85	234.95	0.9	5.5
	Oct	261.23	228.37	181.81	232.15	230.91	155.80	222.14	162.06	227.54	-3.2	5.6
	Nov	263.50	234.27	180.90	234.87	233.50	155.41	222.76	162.06	229.47	0.8	6.8
	Dec	264.35	241.80	179.75	236.89	235.79	156.21	221.28	163.69	230.85	0.6	5.9
2014	Jan	267.72	237.88	186.85	247.03	233.11	156.21	221.85	163.69	233.60	1.2	6.8
	Feb	284.93	240.06	181.56	236.19	233.14	156.21	231.42	163.69	239.64	2.6	8.8
	Mar	289.58	234.33	179.31	244.23	232.65	157.32	230.39	164.52	242.10	1.0	8.8
	Apr	293.27	228.41	179.38	239.47	233.35	154.20	231.16	166.86	242.45	0.1	6.9
	May	285.64	231.83	179.13	242.42	235.65	155.82	230.60	166.93	240.44	-0.8	4.5
	Jun	279.29	230.55	176.90	242.77	233.42	160.83	236.11	166.93	238.77	-0.7	5.5
	Jul	280.60	233.62	174.52	243.95	235.64	164.18	236.21	169.26	240.20	0.6	6.6
	Aug	272.99	232.38	176.63	262.05	234.77	163.94	238.56	169.17	240.35	0.1	3.2
	Sep	265.91	231.86	181.18	245.17	234.93	164.26	238.46	172.30	235.49	-2.0	0.2
	Oct	256.55	233.10	183.66	248.79	235.74	163.73	238.21	172.99	232.75	-1.2	2.3
	Nov	256.89	228.73	185.73	251.92	231.78	164.77	238.20	174.28	233.09	0.1	1.6
	Dec	257.75	227.63	188.10	252.82	232.02	164.60	238.55	174.78	233.65	0.2	1.2
2015	Jan	260.33	230.29	188.89	254.99	231.93	163.91	238.38	175.09	235.20	0.7	0.7
	Feb	265.41	230.70	188.24	259.97	235.46	165.85	244.24	174.47	238.87	1.6	-0.3
	Mar	271.15	230.79	190.27	251.97	235.97	164.42	244.11	174.14	239.77	0.4	-1.0
	Apr	284.06	229.81	191.04	251.00	236.00	161.95	244.18	173.02	244.21	1.9	0.7
	May	283.65	226.99	192.69	244.77	235.26	162.90	244.92	171.08	242.80	-0.6	1.0
	Jun	280.68	230.36	194.10	243.67	235.90	161.35	254.05	171.02	242.92	0.1	1.7
	July	278.70	228.83	200.01	244.19	237.18	164.34	256.29	171.25	242.89	0.0	1.1
	Aug	280.70	236.06	203.31	245.84	236.58	165.06	256.31	171.67	244.71	0.7	1.8
	Sep	274.52	230.31	204.68	257.87	236.79	168.63	260.77	174.28	244.87	0.1	4.0
	Oct	271.24	229.25	210.42	258.48	240.64	162.37	260.85	174.71	243.71	-0.5	4.7
	Nov	288.85	224.05	208.37	256.66	239.05	160.30	260.85	174.72	249.40	2.3	7.0
	Dec	289.25	222.64	212.44	255.76	240.48	160.17	260.97	174.72	249.52	0.0	6.8

Source: Uganda Bureau of Statistics.

Table 15: Consumer Price Index Arua (Base: 2005/2006 =100)

		Food	Beverages and tobacco	Clothing and footwear	Rent, Fuel and utilities	Household and personal goods	Transport and communication	Education	Health, entertainment & Others	All items index	Monthly % change	Annual % change
Weights		41.5525	9.2788	5.4014	11.7798	5.5667	7.6258	6.4576	12.3373	100.0000		
Calendar year												
2013		265.09	226.47	203.20	205.09	204.22	170.68	171.45	170.90	222.84		-0.8
2014		278.78	233.42	228.33	210.36	202.27	179.74	179.98	181.21	233.56		4.8
2015		294.81	233.22	253.40	224.73	210.76	188.28	185.95	186.24	245.38		5.1
Financial year												
2012/2013		273.43	220.64	195.33	205.26	202.54	164.89	168.55	166.85	224.14		3.3
2013/2014		267.94	231.46	215.19	207.92	202.72	176.68	176.36	175.65	226.75		1.2
2014/2015		287.23	232.26	241.42	217.92	206.42	183.68	183.18	184.01	239.64		5.7
Monthly												
2012	Jun	301.59	215.37	185.86	202.41	199.40	160.88	164.86	162.02	233.19	3.5	24.4
	Jul	294.82	215.24	185.28	208.63	199.76	161.50	165.09	161.51	231.08	-0.9	16.4
	Aug	289.16	199.24	187.57	208.83	199.51	161.84	165.16	161.70	227.43	-1.6	11.2
	Sep	287.14	208.15	193.70	208.39	198.03	163.26	168.63	163.12	228.13	0.3	7.0
	Oct	276.30	225.80	188.59	216.52	202.21	160.35	169.26	165.46	226.28	-0.8	4.3
	Nov	272.05	222.33	201.04	212.34	203.20	161.67	168.91	167.94	224.81	-0.6	3.0
	Dec	256.11	230.36	204.42	204.99	202.75	164.99	169.23	168.33	218.55	-2.8	1.9
2013	Jan	270.13	220.21	201.82	200.02	202.99	165.58	169.18	170.07	222.98	2.0	1.0
	Feb	264.96	223.23	195.52	197.54	205.10	164.44	168.58	168.50	220.27	-1.2	0.7
	Mar	269.05	235.51	196.05	199.30	204.13	166.89	168.58	168.66	223.50	1.5	1.6
	Apr	268.14	220.87	195.16	198.04	203.29	168.93	168.57	168.50	221.66	-0.8	0.6
	May	270.39	226.32	197.95	205.69	204.94	170.16	168.67	169.46	224.46	1.3	-0.4
	Jun	262.93	220.43	196.80	202.86	204.52	169.06	172.74	168.98	220.51	-1.8	-5.4
	Jul	258.39	226.91	197.82	209.80	206.24	169.12	172.31	169.42	220.23	-0.1	-4.7
	Aug	262.34	227.89	202.30	219.51	205.44	171.77	172.28	170.15	223.59	1.5	-1.7
	Sep	272.93	232.59	206.37	216.73	203.58	171.77	174.05	173.80	228.78	2.3	0.3
	Oct	266.53	223.98	213.00	210.61	202.39	173.84	174.05	172.89	224.94	-1.7	-0.6
	Nov	262.90	233.14	215.37	201.86	203.86	173.82	174.17	174.77	223.70	-0.6	-0.5
	Dec	252.45	226.55	220.18	199.15	204.09	182.76	174.17	175.57	219.48	-1.9	0.4
2014	Jan	266.52	227.37	218.74	205.21	200.93	182.36	174.04	174.77	225.72	2.8	1.2
	Feb	273.11	231.04	219.57	211.48	201.61	182.80	180.56	176.75	230.32	2.0	4.6
	Mar	275.14	236.32	220.19	209.65	202.35	179.65	180.47	177.25	231.33	0.4	3.5
	Apr	277.77	240.37	222.24	207.79	198.91	181.54	180.82	178.26	232.79	0.6	5.0
	May	277.10	233.93	223.90	202.51	200.70	175.50	178.97	181.81	231.34	-0.6	3.1
	Jun	270.12	237.44	222.56	200.79	202.59	175.19	180.42	182.39	228.74	-1.1	3.7
	Jul	285.17	238.88	219.79	203.82	200.62	169.62	180.29	182.38	234.79	2.6	6.6
	Aug	287.50	239.76	225.69	208.14	201.14	175.98	179.68	183.02	237.22	1.0	6.1
	Sep	279.30	230.62	233.67	222.23	202.08	176.04	181.34	182.48	235.15	-0.9	2.8
	Oct	288.73	225.14	242.26	213.94	204.01	186.50	181.04	185.42	239.30	1.8	6.4
	Nov	279.61	229.46	245.81	217.89	204.17	186.10	181.04	185.49	236.55	-1.1	5.7
	Dec	285.34	230.75	245.47	220.91	208.09	185.60	181.04	184.55	239.46	1.2	9.1
2015	Jan	278.73	232.07	249.56	217.99	208.57	189.01	181.04	184.67	237.01	-1.0	5.0
	Feb	276.78	233.78	245.37	221.14	209.55	185.68	186.30	186.84	236.91	0.0	2.9
	Mar	289.70	236.86	242.59	225.04	208.52	186.10	186.80	184.05	242.54	2.4	4.8
	Apr	295.03	228.01	247.05	227.27	209.51	186.42	186.46	184.05	244.49	0.8	5.0
	May	303.24	228.89	248.37	221.31	210.76	188.19	186.46	182.57	247.38	1.2	6.9
	Jun	297.62	232.92	251.42	215.30	209.99	188.90	186.63	182.57	244.89	-1.0	7.1
	July	299.13	235.56	249.87	226.73	210.11	190.31	186.12	183.30	247.20	0.9	5.3
	Aug	297.40	235.82	253.56	227.87	210.74	192.20	186.73	188.27	247.67	0.2	4.4
	Sep	289.69	232.33	255.32	229.31	212.75	192.22	186.12	189.40	244.62	-1.2	4.0
	Oct	297.69	233.77	264.74	224.87	212.60	186.64	186.12	189.40	247.63	1.2	3.5
	Nov	304.05	235.43	264.44	231.60	211.99	186.44	186.12	189.00	251.11	1.4	6.2
	Dec	308.69	233.24	268.49	228.39	214.00	187.28	186.46	190.75	253.09	0.8	5.7

Source: Uganda Bureau of Statistics

APPENDIX

Table 16: AVERAGE RETAIL MARKET PRICES (UG. SHS) FOR CPI COMMODITIES -PAGES A1-A5

Table 16 Contd...: Average Retail Market Prices (Ug. Shs) for CPI Commodities

ITEM	UNIT	CENTRE																
		KHI		KML		JINJA		MBALE		MASAKA		MBARARA		GULU		ARUA		
		Nov 2015	Dec 2015	Nov 2015	Dec 2015	Nov 2015	Dec 2015	Nov 2015	Dec 2015	Nov 2015	Dec 2015	Nov 2015	Dec 2015	Nov 2015	Dec 2015	Nov 2015	Dec 2015	
60304	Enaine oil	1 litre	12.418	12.418	12.500	12.500	12.114	12.114	12.716	12.716	5.745	6.000	11.810	12.117				
60305	Gear & Diff. Oil	1 litre	12.854	13.078	13.910	14.018	13.037	13.037	13.299	13.299	9.857	9.857	12.078	12.644				
60306	Adult Bicycle	one			248.775	248.775	207.030	203.354	239.743	239.743	219.773	223.321	209.841	209.841	234.663	233.878	255.927	255.927
60307	Children Bicycle	one	471.043	461.451														
60308	Bicycle tyre	one			15.283	15.283	13.680	13.877	11.703	11.703	12.223	12.549	12.806	12.806	14.627	14.675	12.000	12.000
60309	Bicycle tube	one					4.207	4.198	5.255	5.255	3.659	3.768	4.423	4.541	5.886	5.793	4.827	4.913
60311	Bicycle Spoke	one cross					8.462	8.539	10.313	10.313	10.262	10.977	10.488	10.247	10.914	11.598	9.322	9.721
60312	Bicycle Ball bearings	1 dozen					707	707	744	744	809	827	500	500	1.000	1.000	1.200	1.200
60201	Fixed Telephone		193	193	193	193	193	193	193	193	193	193	193	193	193	193	193	193
60202	Mobile Telephone		213	213	213	213	213	213	213	213	213	213	213	213	213	213	213	213
60203	Internet services	per hour	3.634	3.634	1.556	1.556	1.500	1.500	1.570	1.570	1.754	1.754	1.488	1.488	1.500	1.500	1.500	1.500
60313	Motor cars (2nd hand)	one	16.883.139	17.005.919														
60314	Parking fees	1st 2 hours	17.390	17.390														
8	Health.																	
81	Health																	
811	Treatment for																	
8101	Drugs: Glibenclamide	Dose	3.103	3.103														
8102	Drugs: Metformin	Dose	3.377	3.377														
8103	Drugs: Insulin Zinc	Dose	19.084	19.084														
812	Treatment for																	
8104	Drugs: Bendrofluazide	Dose	912	912														
8105	Drugs: Propranolol	Dose	1.167	1.167														
813	Treatment for Malaria																	
8106	Drugs: Coartem	Dose			11.167	11.167	4.829	4.829	3.936	3.936	8.426	8.426	17.321	17.321	8.657	8.657	6.325	6.325
8107	Drugs: Quinine	Dose			13.094	13.094	7.872	7.872	9.312	9.312	8.266	8.266	8.400	8.400	7.442	7.442	8.400	8.400
8108	Drugs: Fansider	Dose			1.787	1.787	1.543	1.543	1.683	1.683	1.180	1.180	1.917	1.917	1.301	1.301	1.220	1.220
814	Treatment for																	
8110	Drugs: Mabenzazole	Dose			742	742	631	631	1.879	1.879	461	461	630	630	605	605	542	542
8111	Drugs: Zentel	Dose			3.500	3.500	2.659	2.659	2.115	2.115	1.890	1.890	2.449	2.449	1.915	1.915	1.917	1.917
815	Treatment for coughs																	
8112	Drugs: Seobrin	Dose			2.779	2.779	1.552	1.552	1.480	1.480	1.636	1.636	1.414	1.414	1.619	1.619	1.516	1.516
8113	Drugs: Cough syrup	Dose			3.614	3.614	3.064	3.064	3.746	3.746	2.295	2.295	3.915	3.915	3.630	3.630	2.371	2.371
8114	Drugs: Amoxicillin	Dose			6.015	6.015	3.367	3.367	3.094	3.094	3.000	3.000	3.000	3.000	3.495	3.495	3.446	3.446
816	Treatment for Aches																	
8115	Drugs: Paracetamol	Dose			1.915	1.915	1.195	1.195	1.611	1.611	1.078	1.078	1.273	1.273	919	919	919	919
8116	Drugs: Ibuprofen	Dose			2.029	2.029	967	967	1.569	1.569	1.203	1.203	1.099	1.099	1.153	1.153	1.153	1.153
81(a)	Treatment for																	
8117	Drugs: Metronidazole	Dose			3.422	3.422	2.460	2.460	2.335	2.335	2.289	2.289	2.711	2.711	2.287	2.287	1.825	1.825
8118	Drugs: Loperamide	Dose			4.048	4.048	1.099	1.099	2.268	2.268	2.141	2.141	1.800	1.800	1.639	1.639	1.800	1.800
81(h)	Treatment for skin																	
8119	White field ointment	Dose			3.873	3.873	1.968	1.968	1.931	1.931	1.864	1.864	3.347	3.347	1.552	1.552	2.460	2.460
81(i)	Treatment for Peptic																	
8120	Drugs 1:	Dose	3.611	3.611	3.332	3.332	2.577	2.577	2.399	2.399	1.640	1.640	2.381	2.381	1.192	1.192	1.687	1.687
8121	Drugs 2: Omeprazole	Dose	19.440	19.440	18.624	18.624	15.131	15.131	7.224	7.224	11.056	11.056	7.370	7.370	11.855	11.855	11.711	11.711
8122	Drugs 3: Amoxyciline	Dose	9.131	9.131	9.042	9.042	4.409	4.409	4.200	4.200	4.200	4.200	4.200	4.200	4.359	4.359	4.825	4.825
81(i)	Obstetrics																	
8124	Antenatal care	1 Person	288.400	288.400	48.404	48.404	7.746	7.746	31.619	31.619	6.708	6.708	43.474	43.474	9.649	9.649	5.000	5.000
8125	Normal deliveries	1 Person	921.954	921.954	163.257	163.257	27.386	27.386	66.952	66.952	32.172	32.172	212.132	212.132	18.708	18.708	10.000	10.000
8126	Deliveries with	1 Person	1.966.095	1.966.095	832.034	832.034	385.913	385.913	519.249	519.249	280.000	280.000	500.000	500.000	547.723	547.723	100.000	100.000
81(k)	Dental care charges																	
8127	Tooth Extraction	1 Person			24.662	24.662	10.123	10.123	20.000	20.000	13.000	13.000	20.000	20.000	13.770	13.770	6.000	6.000
8128	Temporarily filling	1 Person	98.985	98.985														
8129	Permanent filling	1 Person	167.269	167.269														
81(l)	Other Medical																	
8130	Hospitalisation fee	1 Person	90.552	90.552	16.227	16.227	12.500	12.500	6.460	6.460	7.746	7.746	8.660	8.660	20.965	20.965	15.000	15.000
8131	Consultation fee	1 Person	20.606	20.606	7.293	7.293	5.000	5.000	4.734	4.734	6.325	6.325	13.389	13.389	3.751	3.751	3.393	3.393
8123	Laboratory test HIV	1 Person	24.101	24.101														
8109	Laboratory test	1 Person			3.928	3.928	3.000	3.000	2.330	2.330	3.000	3.000	3.557	3.557	2.174	2.174	1.682	1.682
705	Other Educ expenses																	
70501	School uniform	One	32.922	32.922	32.922	32.922	23.050	23.050	22.527	22.527	20.756	20.756	23.855	23.855	26.753	26.753	20.339	20.339
70502	Uniform material	Meter	4.074	4.000	4.160	4.088	4.000	4.000	4.000	4.000	4.000	4.000	4.000	4.000	6.000	6.000	4.000	4.000
70503	Exercise books	One	7.114	7.123	300	300	200	200	200	200	229	229	229	229	200	200	200	200
70504	Ream Paper	One	16.141	16.056	15.682	15.974	8.000	8.000	8.664	8.576	15.979	15.979	8.944	8.944	10.323	10.627	8.000	8.000
70505	Pen	One	500	515	500	504	500	500	500	500	500	500	500	500	500	500	500	500
70506	Geometr Set	One	2.252	2.211	2.193	2.265	1.936	1.936	2.500	2.500	2.321	2.321	2.000	2.000	1.906	2.000	2.000	2.000
70507	Text book	One	40.431	40.388	40.431	40.388	31.071	31.071	35.528	35.528	40.431	40.388	40.431	40.388	40.431	40.388	50.480	53.375
70508	Photocopy	One	100	100	182	182	100	100	100	100	100	100	119	119	141	141	141	141
70509	School bac	One	10.728	11.052	10.771	10.846												

Table 16 Contd....: Average Retail Market Prices (Ug. Shs) for CPI Commodities

ITEM	UNIT	CENTRE																
		KHI		KML		JINJA		MBALE		MASAKA		MBARARA		GULU		ARUA		
		Nov 2015	Dec 2015	Nov 2015	Dec 2015	Nov 2015	Dec 2015	Nov 2015	Dec 2015	Nov 2015	Dec 2015	Nov 2015	Dec 2015	Nov 2015	Dec 2015	Nov 2015	Dec 2015	
70510	Metalic suit case	One	159.119	159.119	41.945	41.622	33.247	31.582	45.702	44.814	35.000	35.000	50.000	50.000	70.000	70.000	70.000	70.000
802	Other goods & serv.																	
80201	Newspaper	One	2.000	2.000	2.000	2.000	2.000	2.000	2.000	2.000	2.000	2.000	2.000	2.000	2.000	2.000	2.000	2.000
80202	Soccer admission	One	5.000	5.000	5.000	5.000	5.000	5.000	1.500	1.500	2.000	2.000	1.732	1.732				
80203	Theatre admission	One	30.000	30.000	21.544	21.544												
80204	Film show	One	41.833	40.772	200	200	300	300	500	500	200	200	500	500	368	368	200	200
80205	Disco fee admission	One	28.148	28.148	13.059	13.059	2.449	2.449	7.000	7.000	3.873	3.873	4.899	4.899	3.360	3.360	3.873	3.873
80206	Laundrv and Drv	One	9.042	9.077	10.382	10.382	5.569	5.649	5.350	5.350	4.263	4.472	7.318	7.318				
80207	Lodaina services	Per Night	594.834	541.967	37.341	37.341	18.144	18.144	17.510	17.510	12.061	12.061	16.201	16.201	23.798	23.798	19.408	19.408
80208	Photocraahs	2 Copies	8.944	8.944	4.401	4.401	2.515	2.515	2.542	2.542	3.557	3.557	2.810	2.810			2.305	2.305
80209	Video coverage		300.000	300.000	312.866	312.866	374.166	400.000	300.000	300.000	284.956	284.956	400.000	400.000			144.062	144.062
80210	Radio announcements		15.000	15.000	3.873	3.873	3.000	3.000	5.000	5.000	3.347	3.347	5.192	5.192			6.542	6.542
	Saloons																	
80211	Straight perm	1 Head	46.416	51.614	21.779	21.956	18.171	18.171	21.411	21.411	22.361	24.495	29.720	29.720	15.000	15.000	15.000	15.000
80212	Plaiting	1 Head	53.133	54.772	20.648	20.648	20.000	20.000	21.411	21.411	27.386	27.386	21.086	21.086	15.000	15.000	15.000	15.000
80213	Straight perm	1 Head	22.894	26.207	9.152	9.448	6.257	7.047	8.670	8.670	10.247	10.247	10.627	10.627	8.944	8.944	10.000	10.000
80214	Men's hair cut	1 Head	10.914	10.914	4.091	4.091	1.000	1.000	2.551	2.551	2.621	2.884	3.107	3.107	1.500	1.500	1.732	1.732
	Meals in Restaurants																	
80301	Soda	300 ml	3.790	3.629	1.683	1.683	1.000	1.000	1.224	1.224	1.476	1.476	1.386	1.386	1.355	1.355	1.293	1.293
80302	Tea	150ml cup	9.740	9.533	1.817	1.817	1.000	1.000	1.000	1.000	1.351	1.351	1.888	1.944	1.861	1.861	1.795	1.795
80303	Passion fruit iuice	1 glass	8.909	8.720	2.991	2.991	1.084	1.084	2.000	2.000	1.500	1.500	2.493	2.615	1.934	1.934	1.000	1.052
80304	Breakfast (Food)		40.886	45.183	3.310	3.310	2.371	2.371	3.118	3.118	2.551	2.551	2.542	2.542	3.080	3.080	2.125	2.125
80305	Lunch		41.033	43.559	6.411	6.411	5.277	5.277	4.843	4.843	5.547	5.547	6.606	6.457	5.886	5.886	4.910	5.134
70	Education		Term II 2.015	Term III 2.015	Term II 2.015	Term III 2.015	Term II 2.015	Term III 2.015	Term II 2.015	Term III 2.015	Term II 2.015	Term III 2.015	Term II 2.015	Term III 2.015	Term II 2.015	Term III 2.015	Term II 2.015	Term III 2.015
701	Pre-primarv & primarv																	
70101	Pre-primarv	Pupil	166.684	180.764	166.684	180.764	56.701	59.910	152.088	153.578	128.686	130.551	291.977	291.977	115.330	142.037	119.516	125.022
70102	Primarv Dav Govt	Pupil	54.140	52.993	54.140	52.993	94.651	94.651	76.138	72.149	56.850	57.097	103.474	105.281	54.829	56.430	63.844	59.510
70103	Primarv Dav Private	Pupil	54.140	52.993	54.140	52.993	88.508	89.098	76.138	72.149	175.241	181.233	103.474	105.281	54.829	56.430	63.844	59.510
70104	Primarv Boarding Govt	Pupil	432.749	433.491	432.749	433.491	349.883	360.195	318.404	318.404	246.176	246.176	400.284	418.061	348.494	350.311	250.738	250.738
70105	Primarv Boarding	Pupil	432.749	433.491	432.749	433.491	348.044	344.342	318.404	318.404	401.671	432.181	400.284	418.061	348.494	350.311	250.738	250.738
702	Secondarv																	
70201	Secondarv Dav Govt	Student	406.703	426.038	406.703	426.038	259.950	263.200	202.845	197.670	175.440	173.088	256.700	260.700	255.250	255.435	148.089	158.998
70202	Secondarv Dav Private	Student	406.703	426.038	406.703	426.038	133.155	133.155	202.845	197.670	175.440	173.088	256.700	260.700	255.250	255.435	148.089	158.998
70203	Secondarv Boarding	Student	814.117	831.769	814.117	831.769	628.784	653.508	582.067	582.343	498.740	518.167	832.249	851.636	426.704	426.704	277.605	277.605
70204	Secondarv Boarding	Student	814.117	831.769	814.117	831.769	628.784	653.508	582.067	582.343	498.740	518.167	398.669	398.669	426.704	426.704	277.605	277.605
703	Secondarv education																	
70301	Secondarv Dav Govt	Student	447.951	449.473	447.951	449.473	311.700	309.700	167.135	172.625	250.077	270.607	268.367	283.533	267.840	267.751	191.067	211.557
70302	Secondarv Dav Private	Student	447.951	449.473	447.951	449.473	146.744	146.744	167.135	172.625	250.077	270.607	268.367	283.533	267.840	267.751	191.067	211.557
70303	Secondarv Boarding	Student	861.969	925.825	861.969	925.825	645.777	660.798	673.730	679.424	562.251	560.020	864.819	883.287	451.650	451.812	296.112	296.112
70304	Secondarv Boarding	Student	861.969	925.825	861.969	925.825	645.777	660.798	673.730	679.424	562.251	560.020	423.604	423.604	451.650	451.812	296.112	296.112
704	Tertiary Education																	
70401	Bachelors Degree	Student	735.458	735.458	735.458	735.458	739.305	739.305	858.929	858.929	888.570	888.570	687.163	687.163	849.729	849.729	709.244	709.244
70402	Diploma	Student	422.909	422.909	422.909	422.909	425.121	425.121	493.907	493.907	510.952	510.952	395.137	395.137	488.617	488.617	407.834	407.834
	Other Education																	
70403	Computer courses	Student	333.102	346.440	333.102	346.440	237.487	237.487	222.391	218.309	250.998	250.998	239.861	239.861	284.613	284.613	209.762	191.293

KHI - Kambala High Income
KML- Kambala Middle and Low
Private
Govt- Government

KHI Prices
Blankets- MINT
Electric Iron- Steam Iron
Coffee- Nescafe
Tea leaves- Tea baqs

Source: Uganda Bureau of Statistics