



UGANDA BUREAU OF STATISTICS



# UGANDA IN FIGURES

2013



10<sup>th</sup> Population Census:

August 2014

**Vision:** To be a centre of excellence in statistical production.

**Mission:** To develop a Coherent, Reliable, Efficient and Demand-driven National Statistical System that supports Management and Development Initiatives

**Organization:** The bureau has a Board of Directors which is the overall governing body and an Executive Director to manage day-to-day activities, who is assisted by two Deputy Executive Directors, Eight Directors and five Managers.

<b>DIRECTORATE</b>	<b>RESPONSIBILITY</b>
<b>Agricultural and Environmental Statistics</b>	Agricultural and Environmental Statistics
<b>Business &amp; Industry Statistics</b>	Business & Industrial production, Energy, Building & Construction Statistics.
<b>District Statistics &amp; Capacity Development</b>	Building capacity at district level to collect, process & utilize statistics
<b>Information Technology</b>	Data processing, systems support services and databases.
<b>Macro-Economic Statistics</b>	External Trade, Government Finance, Price & National accounts statistics
<b>Population &amp; Social Statistics</b>	Population & demographic statistics, vital registration, labour & other social statistics.
<b>Social Economic Surveys</b>	Responsible for all the socio economic surveys
<b>Statistical Coordination Services</b>	Internal & external coordination & collaboration
<b>DIVISION</b>	<b>RESPONSIBILITY</b>
<b>Administration and Human Resources</b>	Managing all the administrative and Human Resource functions
<b>Communication &amp; Public Relations</b>	Managing all the communication & public relations services
<b>Financial Services</b>	Financial management
<b>Geo-Information Services</b>	Managing all the Geo-information services
<b>Internal Audit</b>	Ensuring compliance with policies and procedures in place.

## PREFACE

---

This booklet provides summary statistics from various national statistical publications compiled by the Uganda Bureau of Statistics (UBOS) and other Ministries, Departments and Agencies (MDAs). The statistics give indication of current social and economic trends in the country. Reference should be made to more detailed published sources and statistical data available at UBOS, its website [www.ubos.org](http://www.ubos.org) and the MDAs.

*Some figures in this edition may be different from those in earlier UBOS publications due to data updates in the respective sectors.*

## TABLE OF CONTENT

---

PREFACE .....	ii
GENERAL INFORMATION .....	1
2012 HIGHLIGHTS .....	2
MILLENNIUM DEVELOPMENT GOALS, UGANDA COUNTRY PROFILE .....	3
GEOGRAPHICAL LOCATION AND AREA .....	5
NATURAL RESOURCES.....	6
DEMOGRAPHY .....	8
MIGRATION .....	12
EDUCATION.....	16
HEALTH.....	17
CRIME .....	19
KEY LABOUR MARKET INDICATORS .....	24
HOUSEHOLD EXPENDITURE AND POVERTY.....	26
PRODUCTION, IMPORT & EXPORTS.....	28
TRANSPORT & COMMUNICATION.....	36
NATIONAL ACCOUNTS .....	40
BALANCE OF PAYMENTS.....	42
PRICES .....	43
EXTERNAL TRADE .....	47
PUBLIC FINANCE .....	49
BANKING AND CURRENCY .....	50
UGANDA DIPLOMATIC MISSIONS ABROAD.....	53
REGULAR UBOS PUBLICATIONS .....	61

**GENERAL INFORMATION**

<b>Country name</b>	Republic of Uganda
<b>Capital city</b>	Kampala
<b>Independence day</b>	9th October 1962
<b>Motto</b>	"For God and My Country"
<b>Anthem</b>	"O Uganda, Land of Beauty"
<b>Country Code</b>	+256
<b>Currency</b>	Ugandan Shilling (UGX)
<b>Total Population (mid 2012)</b>	34 million
<b>languages</b>	English, Kiswahili & local languages
<b>Mobile Telephone Networks</b>	Airtel (075,070), MTN (077, 078), Orange (079), UTL (071), Smile(076),
<b>Accessibility</b>	By air - Entebbe International Airport, By land - Kenya (Malaba & busia), Tanzania (Mutukula & Kikagati), Sudan( Atiak/Bibia, Oraba), DR Congo (Vuura, Bunagana, Mpondwe, Goli), Rwanda (Katuna, Cyanika, Mirama Hills)

<b>GDP at current market prices</b>	53,202 (bill Shs)
<b>GDP growth rate at constant (2002) market prices</b>	2.8 percent
<b>Revenue excluding grants as % of GDP (2011/12)</b>	13.31 percent
<b>Expenditure as % of GDP (2011/12)</b>	14.40 percent
<b>Inflation rate (2005/06 = 100)</b>	14.0 percent
<b>Balance of Payment surplus (2012/13)</b>	787.0 million US \$
<b>Annual exchange rate (per US \$)</b>	2,504.6
<b>Total fertility rate (2011 UDHS)</b>	6.2 children per woman
<b>Infant mortality rate (2011 UDHS)</b>	54 death per 1000 live birth
<b>Under five mortality rate (2011 UDHS)</b>	90 death per 1000 live birth
<b>Main Exports</b>	Coffee, Fish & Fish Product, Animal/vegetable Fats & Oil, Cement, Cotton, Sugar, Iron & steel.
<b>Main Imports</b>	Petroleum, Medical & pharmaceutical products, Cereals, Iron and Steel, Machinery, Telecommunication, Sound apparatus and Road vehicles.

MILLENNIUM DEVELOPMENT GOALS, UGANDA COUNTRY PROFILE

	Goal/Indicator	STATUS			TARGET
		2009/10	2010/11	2011/12	2015
	<b>Goal 1: Eradicate extreme poverty and hunger</b>				
1	Poverty head count (P0)	24.5			28
2	Poverty gap - (P1)	6.8			
3	Prevalence of underweight children under-five years of age		13.8		12.5
4	Employment to Population Ratio	75.4			
5	Proportion of own-account and contributing family workers in total employment	74.4			
	<b>Goal 2: Achieve universal primary education</b>				
6	Net enrolment ratio in primary education	83.2	81.1 <sup>1</sup>		100
7	Literacy rate of 15-24 year-olds		76.1 <sup>2</sup>		
	<b>Goal 3: Promote gender equality and empower women</b>				
8	Ratio of girls to boys in primary education	0.98	1.0		1
9	Ratio of girls to boys in secondary education		1.1		1
10	Share of women in wage employment in the non-agricultural sector	43.7			50
11	Proportion of seats held by women in National Parliament	31.6	31.6	35.0	
	<b>Goal 4: Reduce child mortality</b>				
12	Under – five mortality (per 1,000, live births)		90		56
13	Infant mortality rate		54		31
14	Proportion of 1 year old children immunized against measles		75.8		90
	<b>Goal 5: Improve maternal health</b>				
15	Maternal mortality ratio (per 100,000 live births)		438		131
16	Proportion of births attended by skilled health personnel		58		90

		STATUS			TARGET
		2009/10	2010/11	2011/12	2015
17	Contraceptive prevalence rate		30		
18	Adolescent birth rate		134.5		
19	Antenatal care coverage				
	At least one visit		94.9		
	At least four visits		47.6		
20	Unmet need for family planning		34.3		
21	Condom use at last higher-risk sex among 15-24 year olds				
	Male		61.1		
	Female		26.8		
22	Proportion of 15-24 year olds who have comprehensive knowledge of HIV/AIDS				
	Female		39.5		
	Male		38.1		
	Goal 7: Ensure environmental sustainability				
23	Proportion of land area covered by forest				
24	Proportion of population accessing an improved drinking water source (Total)	73.8			
	Urban	92.3			100
	Rural	69.5			70
	Goal 8: Develop a global partnership for development				
24	Telephone Fixed Line subscriptions	233,533	464,849	314,956	
25	Cellular/Mobile subscribers (millions)	9.4	16.7	16.4	
26	Teledensity (lines per 100 population)	31.5	52.1	48.8	
27	Fixed internet subscribers	30,000	88,786	96,000	
28	Mobile Wireless Internet subscriptions	358,228	977,500	*2,692,705	
29	Estimated internet users (millions)	3.0	4.8	*6.2	
30	Debt service as a percentage of exports of goods and services	17.1	2.69	2.43	

Note: \* Figures are for the calendar year ending December, 2012.

Source: Indicator, 1, 2, 4, 5, 9, 22 – Uganda National Household Survey, 2005/6, 2009/10 UBOS.  
3, 6, 7, 8, 10, 11, 12, 13, 14, 15, 16, 19, 20 – Demographic and Health Survey 2011, UBOS

21- Uganda Forestry Authority; 23, 24 Ministry of Finance, Planning and Economic Development  
24, 25, 26, 27, 28, 29 - Uganda Communications Commission (UCC)



**Geographical Indicators**

Latitude	4°12'N & 1°29'S
Longitude	29°34'E & 35°0'E
Altitude (minimum ASL)	620 metres
(maximum ASL)	5,110 metres
Total surface area	241,550.7 km <sup>2</sup>
Area under land	199,807 km <sup>2</sup>
Area under water and swamps	41,743 km <sup>2</sup>
Temperature (annual mean)	16-30°C
Rainfall	850 -1700 mm/year

**National land cover statistics (Square Kilometres)**

Land cover type	1990	2000	2005
Built-Up Areas	365.7	365.7	365.7
Bush lands	14,223.9	12,624.5	11,893.6
Commercial Farmlands	684.5	684.5	684.5
Cultivated Lands	84,010.0	94,526.7	99,018.6
Grasslands	51,152.7	51,152.7	51,152.7
Impediments	37.1	37.1	37.2
Plantations - Hardwoods	186.8	153.3	138.6
Plantations - Softwoods	163.8	80.0	121.5
Tropical High Forest Depleted	2,740.6	2,248.2	2,036.3
Tropical High Forest Normal	6,501.5	5,333.5	4,830.6
Water Bodies	36,902.8	36,902.8	36,902.9
Wetlands	4,840.4	4,840.4	4,840.6
Woodlands	39,740.9	32,601.4	29,527.8

Source: National Forestry Authority, Ministry of Water, Lands and Environment

## Major water bodies

Major Lakes	Major Rivers
Victoria	Victoria Nile
Kyoga	Albert Nile
Albert	Katonga
Edward	Kagera
George	Nkusi
Kwania	Kafu
Bisina	Achwa, Semliki, Pager

## National parks

National Park	Sq. kms	Wildlife Reserve	Sq. kms
Murchison Falls	3,840	Karuma	675
Queen Elizabeth	1,978	Bugungu	473
Kidepo Valley	1,442	Katonga	207
Mount Elgon	1,145	Kabwoya	200
Rwenzori Mountains	998		
Kibale	776	Game Reserve	Sq. kms
Bwindi Impenetrable Forest	331	Toro (Semliki)	550
Lake Mburo	260	Kigezi Gorilla	265
Semuliki	220	Ajai	158
Mgahinga Gorilla	33	Kyambura	154

Mountain summits (meters above sea level)

Mountain Summit	Height (m)
Rwenzori	5,110
Elgon	4,321
Muhavura	4,127
Sabyinyo (extinct)	3,645
Moroto	3,084
Kadam	3,069
Murongole	2,749

## Number of inhabitants by region ('000)

Region	Census Population		Mid-Year Projected	
	1991	2002	2012	2013
Central	4.84	6.58	8.72	8.97
Western	4.55	6.30	8.49	8.75
Northern	3.15	5.15	7.97	8.34
Eastern	4.13	6.20	8.96	9.30
<b>Uganda</b>	<b>16.67</b>	<b>24.23</b>	<b>34.13</b>	<b>35.36</b>

Source: Uganda Bureau of Statistics

## Mid Year Population (millions) - 2010-2013

Year	2010	2011	2012	2013
Urban	5.8	6.0	6.2	6.4
Rural	26.0	27.0	27.9	28.9
<b>Total</b>	<b>31.8</b>	<b>32.9</b>	<b>34.1</b>	<b>35.4</b>

Source: Uganda Bureau of Statistics

**Summary of demographic indicators**

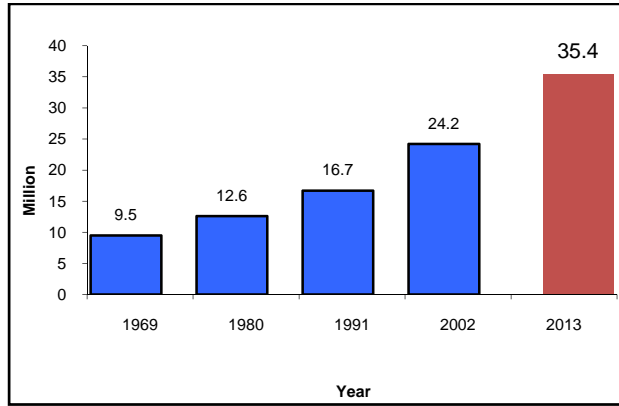
Total population (2013 mid-year)*	35.4 million
Percentage urban (2013mid-year)*	18.1 percent
Population of Kampala district (2013 mid-year)*	1.79 million
National Sex ratio (2002 census)	95 males per 100 females
Population density (2002 census)	123 persons/km <sup>2</sup>
Infant Mortality rate (2002 census)*	76 death per 1000 live births
Life Expectancy at birth (2002 census)*	50.4 years
Male	48.8 years
Female	52.0 years
Total fertility rate (2011 UDHS)	6.2 children per woman
Infant mortality rate (2011 UDHS)	54 death per 1000 live birth
Under five mortality rate (2011 UDHS)	90 death per 1000 live birth

Projected midyear Population for 5 year age groups, 2011 – 2013 ('000)

Age	2011		2012		2013	
	Male	Female	Male	Female	Male	Female
0-4	3,491	3,516	3,602	3,619	3,714	3,723
5-9	2,758	2,776	2,955	2,975	3,059	3,072
10-14	2,043	2,061	2,078	2,082	2,218	2,218
15-19	1,755	1,805	1,811	1,851	1,864	1,894
20-24	1,439	1,500	1,490	1,543	1,544	1,590
25-29	1,163	1,227	1,207	1,261	1,252	1,295
30-34	921	983	958	1,012	996	1,041
35-39	718	780	747	803	776	825
40-44	551	616	573	634	595	652
45-49	417	481	432	496	448	510
50-54	307	366	318	378	329	390
55-59	218	268	225	277	233	286
60-64	147	187	151	193	156	200
65-69	92	123	95	127	97	131
70-74	53	73	54	76	56	79
75-79	27	38	28	40	29	42
80+	18	23	18	25	19	26
<b>Total</b>	<b>16,119</b>	<b>16,821</b>	<b>16,741</b>	<b>17,390</b>	<b>17,383</b>	<b>17,974</b>

Source: Uganda Bureau of Statistics

Figure showing Census Population (1969, 1980, 1991 & 2002) and 2013 mid year Population estimates



**Total Arrivals and Departures by category ('000), 2009 – 2012**

Category	2009	2010	2011	2012
Arrival	1,095	1,275	1,530	1,634
Resident	288	329	379	437
Non- resident	807	946	1,151	1,197
Departure	1,072	1,184	1,371	1,471
Resident	311	324	367	382
Non- resident	761	860	1,004	1,090

Source: Uganda Bureau of Statistics

**Tourist Arrivals by purpose of visit ('000), 2009-2012**

Purpose	2009	2010	2011	2012
Leisure, recreation and holidays	126	149	76	148
Business and professional	167	184	160	205
Visiting friends and relatives	406	357	603	383
Others	107	256	312	461
<b>Total</b>	806	946	1151	1,197

Source: Uganda Bureau of Statistics



**Total arrivals and departures by border post ('000), 2009 – 2012**

Item	2009	2010	2011	2012
Arrivals:	1,095	1,275	1,530	1,634
Entebbe	411	528	574	621
Busia & Malaba	348	381	406	439*
Mutukula, Western & Northern Borders	336	366	550	574
Departures:	1,072	1,184	1,371	1,472
Entebbe	403	480	465	546
Busia & Malaba	332	351	356	410*
Mutukula, Western & Northern Borders	336	353	550	516

Note: \* Includes other Eastern Borders

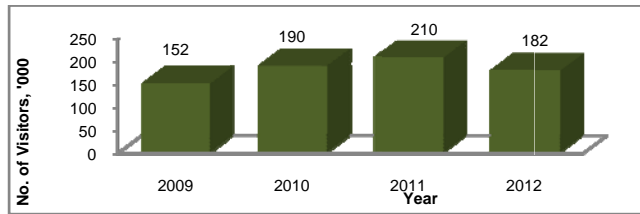
Source: Uganda Bureau of Statistics

Visitors to National Parks (Citizens and Foreigners), 2009 – 2012

National Parks	2009	2010	2011	2012
Queen Elizabeth	62,513	76,037	87,924	58,172
Murchison Falls	39,237	53,460	60,273	60,803
Lake Mburo	17,521	20,966	21,480	22,927
Bwindi Impenetrable	11,806	15,108	17,335	18,259
Kibaale	7,799	9,482	10,433	10,372
Semliki	2,701	3,393	3,152	3,591
Kidepo Valley	2,924	3,208	2,452	2,300
Mount Elgon	2,943	2,660	2,350	1,565
Mgahinga Gorilla	1,886	3,328	1,899	2,497
Rwenzori Mountains	1,281	1,529	1,738	1,663
Toro Semliki	759	640	770	0
Katonga	448	301	-	0
<b>Total</b>	<b>151,818</b>	<b>190,112</b>	<b>209,806</b>	<b>182,149</b>

Source: Uganda Bureau of Statistics

Graph showing visitors to National Parks, 2009 - 2012



Visitors to National Parks by Residency, 2012

National Parks	Foreigners Non residents	Foreigners Residents	EAC Residents	Students Uganda	Others	Total
Murchison Falls	24,554	8,940	19,281	6,358	1,670	60,803
Queen Elizabeth	17,514	4,345	14,891	21,418	4	58,172
Lake Mburo	8,759	2,090	5,774	6,213	91	22,927
Bwindi Impenetrable	17,553	130	204	146	226	18,259
Kibaale	8,642	376	659	668	27	10,372
Semliki	630	200	1,055	1,666	40	3,591
Mgahinga Gorilla	1,649	197	236	409	6	2,497
Kidepo Valley	768	456	734	342	-	2,300
Rwenzori Mountains	964	178	276	239	6	1,663
Mount Elgon	437	189	573	353	13	1,565
<b>Total</b>	<b>81,470</b>	<b>17,101</b>	<b>43,683</b>	<b>37,812</b>	<b>2,083</b>	<b>182,149</b>

Source: Uganda Bureau of Statistics

## Tertiary school education

## Tertiary school count &amp; enrolment, 2011

Institution	Count	Enrolment		
		Male	Female	Total
Universities	32	78,817	61,270	140,096
Business Institutions	70	14,553	15,903	30,556
National Teachers Colleges	7	4,989	2,853	7,842
Health Institutions	21	3,924	3,564	7,459
Technical Colleges	5	2,914	336	3,250
Agricultural , Fisheries & Forestry	3	1,169	456	1,625
Media Institutions	4	967	653	1,620
Theology	11	1,326	271	1,597
Cooperative colleges	2	204	144	448
Tourism Institutions	3	137	89	226
Other Institutions	7	1,255	596	1,851
<b>Total</b>	<b>165</b>	<b>110,255</b>	<b>86,135</b>	<b>196,570</b>
<i>Source: Uganda Computer Services, MOFPED</i>				

## Top Ten Reported Causes of Morbidity among All Ages, 2009/10 - 2011/12

No	Diagnosis	2009/10		2010/11		2011/12	
		New Cases ('000)	%	New Cases ('000)	%	New Cases ('000)	%
1	Malaria	14,164	38	12,615	36	13,264	36
2	Cough or Cold	6,852	19	6,713	19	8,856	24.2
3	Intestinal Worms	1,867	5	1,826	5	2,019	5.5
4	Skin Diseases	1,101	3	1,118	3	1,113	3
5	Acute Diarrhoea	1,032	3	1,030	3	1,182	3.2
6	Eye Conditions	752	2	935	3	907	2.5
7	Gastro-Intestinal Disorders (Non Infective)	817	2	825	2	731	2
8	Pneumonia	912	2	819	2	942	2.6
9	Urinary Tract Infections	1,298	4	747	2	868	2.4
10	Injuries (Trauma due to other causes)	642	2	658	2	642	1.8
11	All Others	7,373	20	7,567	22	5,985	16.8
	Total	36,809	100	34,853	100	36,508	100

Source: Annual Health Sector Performance Report 2011/12, Ministry of Health

Children under one year immunized with DPT3 vaccine, 2004-2012 (Percent)



Top ten causes of hospital based mortality for all ages in 2011/12

IPD Diagnosis	Under 5 years	Above 5 years
Malaria	28	17.7
AIDS	*	*
Pneumonia	14.8	6.7
Anaemia	9.6	3.7
Tuberculosis	1.5	3.9
Perinatal conditions(in New borns 0 to 28 days)	3.8	-
Septicaemia	2.6	1.4
Other Types of Meningitis	0.6	1.7
Respiratory Infections (Other)	8.7	3.3
Injuries -Road Traffic Accidents	0.3	3
All Others	29.9	58.6
<b>Total</b>	<b>100</b>	<b>100</b>

Source: Ministry of Health (HMIS) annual report 2011

## Number of cases reported by category, 2010-2012

Case	2010	2011	2012
Thefts	23,429	21,672	20,649
Assaults	2,979	19,023	18,030
Sex Related Offences	8,645	8,633	9,009
Breakin's	8,685	7,753	7,340
Economic Crimes	10,988	9,574	11,006
Robberies	6,025	4,174	4,194
Narcotics/Drugs	871	1,563	1,584
Homicides	1,761	1,987	1,910
Child Related Offences	4,781	3,329	3,984
Other laws	361	844	737
Political/Media Offences	674	666	131
Corruption	52	150	24
Terrorism	2	10	8
Other Crimes in General	10,423	19,943	21,857
<b>GRAND TOTAL</b>	<b>79,676</b>	<b>99,321</b>	<b>100,456</b>

Source: Uganda Police Force

Common cases reported and prosecuted (Number) , 2010-2012

Common cases	2010		2011		2012	
	RDT	PSCT	RDT	PSCT	RDT	PSCT
Common Assaults	20,578	5,262	16,096	6,431	15,113	6,733
Defilement	7,564	3,501	7,690	3,733	8,076	4,474
Theft of Cattle	335	150	3,666	2,846	3,575	3,099
Threatening Violence	1,965	1,830	6,763	2,839	7207	3220
Thefts of Mobile Phones	11,908	2,536	6,812	2,557	5,599	2,112
Obtaining By False Pretense	7,135	1,280	7,413	2,304	8,250	2,302
Burglaries	5,535	1,721	4,203	2,111	3,867	2,156
Criminal Trespass	1,050	885	4,517	1,964	4,668	2,126
Aggravated Assaults(general)	2,391	1,476	2,908	1,848	2,888	2,002
Thefts of Cash	2,788	1,213	4,421	1,742	4,603	1,801
Malicious Damage to Property	6,089	1,591	4,052	1,612	4,482	2,126
Simple Robbery(general)	4,871	1,015	3,161	1,100	3,126	1,062

*RDT- Reported; PSCT – Prosecuted  
Source: Uganda Police Force*



**Causes of road accidents, 2010 – 2012**

Causes	2010	2011	2012
Careless Driving	9,316	8,659	8,694
Reckless/Dangerous Driving	6,579	6,514	5,831
Over speeding	839	867	308
Overloading/Dangerous Loading	240	113	82
Under Influence of Drinks/Drugs	194	299	216
Careless Pedestrian	881	1141	1,079
Passenger Falls from Vehicle	238	501	270
Vehicle Mechanical Defects	720	929	445
Dazzled by Lights of another vehicle	114	152	46
Obstacle on carriage way	76	266	59
Unknown cause (Hit & Run)	2,129	1,818	1,105
Other causes	1,135	1,013	2,971
<b>Total</b>	<b>22,461</b>	<b>22,272</b>	<b>21,106</b>

Source: Uganda Police Force

**Tickets and amount paid on the express penalty scheme, 2010-2012**

	2010	2011	2012
Tickets issued (number)	212,086	238,387	261,305
Amount paid ( mill. shs)	6,794	12,485	7,026.5

Source: Uganda Police Force

**Number of Prisoners by Category, 2008 – 2012**

Category	2009	2010	2011	2012
Remand	17,179	16,313	17,405	19,890
Convicted	23,626	13,533	16,106	17,223
Percentage Convicted	45	45	48	46
Incarceration Rate	133	94	102	109
<b>Total</b>	<b>40,805</b>	<b>29,846</b>	<b>33,511</b>	<b>37,113</b>

Source: Uganda Prisons Services

**Distribution of Prisoners on remand by region, 2009-2011**

District	2009	2010	2011	2012
Central	7,161	7,294	6,739	8,052
Eastern	2,292	2,429	2,565	2,940
Northern	2,574	2,797	3,767	3,528
Western	5,152	3,793	4,334	5,370
<b>National</b>	<b>17,179</b>	<b>16,313</b>	<b>17,405</b>	<b>19,890</b>

Source: Uganda Prisons Services

**Prison Capacity and Occupancy Rate, 2012**

Region	Prison Population	Existing Prison Capacity	Occupancy rate
Kampala	7,778	2,224	350
Central	7,120	2,504	284
Eastern	5,984	4,197	143
Northern	6,431	2,407	267
Western	9,800	3,745	262
<b>National</b>	<b>37,113</b>	<b>15,077</b>	<b>246</b>

Source: Uganda Prisons Services

**The labour force market indicators**

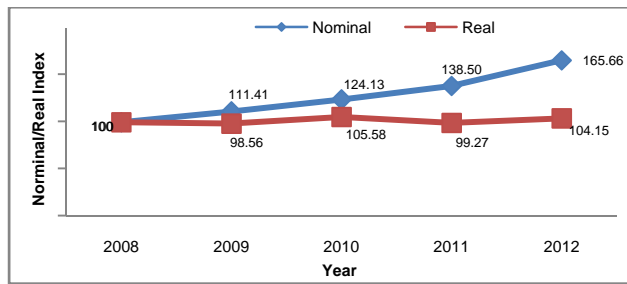
Indicator	2002/03	2005/06	2009/10
Uganda Labour force (Millions)	9.8	10.9	13.4
Labour Force Participation Rate	80.1	81.4	91.6
Employment to population ratio	77.4	79.8	88.3
National unemployment rate	3.5	2.0	3.6
Urban unemployment rate	12.2	6.4	8.7
National time related under employment rate	16.9	12.3	3.2
Urban time related under employment rate	10.4	8.7	4.1
Median monthly wage (Shs. '000)	54	54	56

Note: (i) The labour force market indicators in Uganda are based on the population in the working age bracket which is 14-64 years.

(ii) Some of the data presented in this edition differs from previous editions following the adoption of the recent revisions of the ILO definitions.

Source: Uganda Bureau of Statistics

Figure showing Labour Cost Index for Nominal and Real Wage (2008 =100)



Size of the Civil Service, 2008 – 2011				
Groups	2008	2009	2010	2011
Main stream	229,585	213,041	210,510	219,869
Traditional civil service	41,045	13,783	11,555	10,692
Teaching service	149,780	149,122	149,843	156,442
Police and Prisons	29,924	29,350	32,304	35,625
Group employees	8,771	19,900	14,637	12,939
Not stated	65	886	2,171	4,171
University	5,660	5,791	6,446	6,705
Decentralized districts	38,992	43,820	46,899	48,576
Established staff	28,783	31,534	33,457	31,539
Group employees	10,184	11,975	13,238	13,625
Not stated	25	311	204	3,412
<b>Grand Total</b>	<b>274,237</b>	<b>262,652</b>	<b>263,855</b>	<b>275,150</b>

Source: Uganda Computer Services, Ministry of Finance, Planning and Economic Development.

## Percent Share of Household Expenditure by Item groups

Item Group	2002/03	2005/06	2009/10	2010/11
<b>Consumption expenditure</b>				
Food, drink & tobacco	44	44	44	50
Rent, fuel & energy	19	4	4	2
Education	7	16	17	15
Transport & communication	8	5	6	5
Health	4	7	9	7
Household & personal goods	7	10	10	11
Clothing & footwear	4	6	5	5
Other consumption expenditure	2	3	2	2
<b>Non-consumption expenditure</b>	3	4	4	2
<b>Total</b>	<b>100</b>	<b>100</b>	<b>100</b>	<b>100</b>

Source: Uganda Bureau of Statistics.

Monthly consumption expenditure per household, '000 shs (average price)

Residence	2005/06			2009/10		
	Rural	Urban	Total	Rural	Urban	Total
<b>Region</b>						
Kampala	-	463	463	-	476	476
Central*	234	384	254	258	418	291
Eastern	167	294	179	187	252	193
Northern	97	209	112	137	272	150
Western	192	342	205	201	286	210
<b>Uganda</b>	<b>176,600</b>	<b>372,500</b>	<b>210,750</b>	<b>197,500</b>	<b>384,350</b>	<b>232,700</b>
<i>Notes: * Estimates for Central region exclude Kampala</i>						
<i>Source: Uganda Bureau of Statistics.</i>						

Poverty Statistics in the UNHS 2002/03, 2005/06 and 2009/10

Indicator	location	2002/03	2005/06	2009/10
Pop Share	Rural	86.2	84.6	85.0
	Urban	13.8	15.4	15.0
P0 - Head count	Rural	42.7	34.2	27.2
	Urban	14.4	13.7	9.1
P1 - Poverty gap	Rural	13.1	9.7	7.6
	Urban	3.9	3.5	1.8
P2 - squared poverty gap	Rural	5.7	3.9	3.1
	Urban	1.6	1.4	0.6
Mean - CPAE	Rural	40,920	47,031	52,467
	Urban	103,688	99,525	119,552
Gini Coefficients	Rural	0.483	0.432	0.447
	Urban	0.363	0.363	0.375

Source: Uganda Bureau of Statistics.

## Agriculture and Fisheries

## Procurement of main export cash crops (tonnes), 2009-2012

Cash crop	2009	2010	2011	2012
Coffee	195,871	166,968	191,379	186,126
Robusta	153,822	117,719	152,669	133,830
Arabica	42,049	49,249	38,710	52,295
Tea	48,663	49,182	35,194	50,915
Tobacco	18,846	27,138	28,444	31,090*
Cotton	37,161	68,900	191,379	—

\*Is an estimate

Source: Uganda Bureau of Statistics



**Area planted (000 Ha) and Production (000 tonnes) of selected food crops**

Crop	UCA 2008/09		2011		2012	
	Area Planted	Production	Area Planted	Production	Area Planted	Production
Bananas	916	978	979	4,699	979	4,503
<b>Cereals</b>						
Finger millet	250	167	172	257	175	244
Maize	1,014	1,032	1,063	2,551	1,094	2,734
Sorghum	399	355	364	437	373	336
Rice	75	87	90	233	92	212
Wheat	11		13	23	14	20
<b>Root crops</b>						
Sweet potatoes	440	442	450	1,798	452	1,852
Irish potatoes	33	36	37	180	39	185
Cassava	871	794	822	2,712	851	2,807
<b>Pulses</b>						
Beans	618	633	654	915	669	870
Field beans	44	28	28	17	29	12
Cow peas	24	24	25	12	25	10
Pigeon peas	30	32	33	13	33	13
<b>Legumes</b>						
Ground nuts	345	394	409	327	421	295
Soya beans	36	45	45	32	46	23
Sim Sim	176	198	203	142	207	124
Sun flower	183	—	221	265	230	230

Source: MAAIF and Uganda Bureau of Statistics

**Livestock numbers (000, animals), 2009 – 2012**

Species	2009	2010	2011	2012
Cattle	11,751	12,104	12,467	12,841
Sheep	3,516	3,621	3,730	3,842
Goats	12,823	13,208	13,604	14,012
Pigs	3,280	3,378	3,480	3,584
Poultry	41,280	42,766	44,306	45,901

Note: Poultry figures include figures for Chicken, Ducks, Turkey, Geese, Guinea fowl, and Other Domestic birds

Source: MAAIF and UBOS

**Fish catch by water body (000' tonnes), 2009 – 2012**

Lake	2009	2010*	2011	2012
Victoria	221.3	-	169.8	185.2
Albert	56.5	-	163.6	152.6
Kyoga	60.0	-	63.7	44.0
Edward, George & Kazinga Channel	8.8	-	6.7	5.2
Other Waters	20.0	-	17.8	16.5
Total	366.6	-	421.6	403.5

Note: \*Data for 2010 is being verified by MAAIF

Source: Fisheries Department, MAAIF

**Index of Production (Manufacturing), Annual Group Summary, 2009-2012  
(2002=100)**

Description	Wt	2009	2010	2011	2012
Processed Foods	400	161.4	153.5	143.5	157
Drinks and tobacco	201	196.5	211.8	250.3	266
Textiles, clothing and foot wear	43	187.2	182.7	188.4	193
Sawmilling, paper and printing	35	07.8	216.2	211.4	234
Chemicals, paint, soap & foam products	97	221.5	245.6	218.9	221
Bricks & cement	75	168.7	209.3	244.4	240
Metal products	83	128.5	139.1	50.7	140
Miscellaneous	66	155.6	157.6	156.7	153
<b>Total Manufacturing</b>	<b>1,000</b>	<b>174.4</b>	<b>180.8</b>	<b>185.6</b>	<b>193.9</b>

Source: Uganda Bureau of Statistics

## Energy

### Installed electricity capacity (MW), 2009-2010

Plant Name	2009	2010
<b>Installed Capacity</b>	492	539.5
<b>Hydro Electricity</b>	328	352.5
Kiira	120	120
Nalubale	180	180
Kasese Cobalt (KCCL)	10	10
Kilembe Mines (KML)	5	5
Bugoye Tronder Power	13	13
Mpanga	-	18
Ishaha Ecopower	-	6.5
<b>Thermal Electricity</b>	150	170
Lugogo	-	-
Electromax	-	20
Aggreko II - Kiira	50	50
Jacobsen Plant - Namanve	50	-
IDA Plant - Mutundwe	50	-
<b>Bagasse Electricity</b>	14	17
Kakira	12	12
Kinyara	2	5

Source: Uganda Electricity Transmission Company limited

Energy purchases (GWh), 2009 – 2012

	2009	2010	2011	2012
Eskom	1234.98	1254.80	1339.36	1,274.96
Bujagali	-	-	-	966.13
Aggreko 1 (Lugogo)	0.0	0.0	0.0	0.0
Aggreko II (Kiira)	126.34	150.98	132.92	0.0
Aggreko III (Mutundwe)	395.14	417.78	363.84	56.57
Jacobsen (Namanve)	353.09	372.58	391.21	148.70
Kinyara	4.47	4.80	2.00	8.78
Kakira	-	80.31	58.00	85.31
Electromax	0.28	82.56	69.96	67.68
Bugoye	15.91	66.36	80.89	77.56
Mpanga EMS	-	-	65.09	78.83
Ecopower	-	-	-	28.87
Backflows to UETCL	346.10	331.20	322.45	90.09
Electrogaz	2.33	2.93	2.93	3.20
Kasese Cobalt (KCCL)	1.31	3.42	3.66	4.62
Kilembe Mines (KML)	28.35	22.31	22.81	22.64
KPLC(Import)	25.06	29.21	36.31	30.22
<b>Total</b>	<b>2,533.36</b>	<b>2,819.24</b>	<b>2,891.43</b>	<b>2,944.17</b>

Source: Uganda Electricity Transmission Company Limited

**Building and Construction****Number of Plans Submitted, Approved and building Permits issued, 2009 - 2012**

Category		2009	2010	2011	2012
<b>Residential</b>	Submitted	960	1,075	1,954	2,657
	Approved	432	723	1,495	1,444
	Permits issued	52	50	45	-
<b>Commercial</b>	Submitted	512	657	1,128	1,337
	Approved	349	402	879	860
	Permits issued	27	26	33	-
<b>Industrial</b>	Submitted	37	48	43	76
	Approved	18	23	24	50
	Permits issued	4	1	2	-
<b>Institutional</b>	Submitted	103	101	114	247
	Approved	49	72	80	149
	Permits issued	14	7	3	-
<b>Others</b>	Submitted	5	31	43	115
	Approved	13	12	34	63
	Permits issued	5	1	1	-

Source: Municipalities, Town Councils and Kampala Divisions

**Cement production, export, imports and net domestic supply, 2009-2012**

	2009	2010	2011	2012
Imports	566	503	501	449
Local Production	1,162	1,347	1,666	1,780
Exports	390	362	502	528
Net Domestic consumption	1,338	1,489	1,665	1,701
% Change in Domestic Consumption	16.14	11.29	11.83	2.17

Source: Uganda Bureau of Statistics

## Newly registered vehicles, 2008-2011

	2008	2009	2010	2011
Trucks	5,644	5,494	5,918	4,749
Pick up Vans	3,486	2,597	2,239	2,191
Buses	262	240	147	149
Mini Buses	10,943	14,578	18,889	15,876
Cars	11,975	8,445	7,694	7,717
Motor Cycles	70,527	69,998	70,104	84,240
Agric Tractors	378	534	855	830
Others	372	489	378	554

Source: Uganda Revenue Authority

## National roads network, length in kilometers, 2009 - 2012

	2009	2010	2011	2012
New Paved	21	123	152	53
Total Paved	2,989	3,112	3,264	3,317
Total Unpaved (Gravel)	17,011	16,888	16,736	17,683
<b>Total National network</b>	<b>20,000</b>	<b>20,000</b>	<b>20,000</b>	<b>21,000</b>
% Paved	14.95	15.56	16.32	15.80

Source: Uganda National Roads Authority



Commercial Traffic at Entebbe International Airport, 2009 – 2012

Mode of Traffic	2009	2010	2011	2012
Commercial Aircraft Movement	21,619	23,320	24,506	30,259
Over Flight at Entebbe	8,694	9,574	12,142	14,138
Passengers (Total)	996,395	1,110,876	1,166,996	1,342,112
International				
Landed	468,899	518,791	551,904	626,509
Embarked	460,153	504,646	533,705	612,025
In Transit	49,434	75,560	71,879	89,798
Domestic				
Landed	9,188	6,004	4,832	7,190
Embarked	8,721	5,875	4,676	6,590
Freight (Total)	53,278	49,683	49,248	56,518
Cargo				
Imports	19,917	21,344	20,713	22,123
Exports	32,726	27,753	27,923	33,784
Mail				
Unloaded	447	392	415	394
Loaded	188	194	197	217

Source: Civil Aviation Authority

Telecommunications statistics, 2009 – 2012

Service	2009	2010	2011	2012
Fixed telephone subscribers ('000)	234	327	465	315
Mobile subscribers ('000)	9,384	12,828	16,697	16,356
Telephone traffic (mill minutes)	7,147	10,038	13,028	13,997
Payphones ('000)	95	104	n.a	n.a
Mobile cellular operators	6	6	6	7
Internet services operators	n.a	n.a	n.a	n.a
private FM Radio stations	228	277	263	n.a
Private Analogue TV stations	55	55	64	n.a
Major postal operator	1	1	1	1
Courier services operators	29	30	35	28

Note: \* Payphones are estimated

Source: Uganda Communications Commission

Postal statistics (Pieces), 2009 – 2012

Items	2009	2010	2011	2012
Letters (Total), '000	4,728	2,413	3,723	2,613
Ordinary letters posted <sup>1</sup> , ('000)	2,569	1,306	2,177	1,799
Ordinary letters received <sup>2</sup> , ('000)	2,029	1,043	1,470	746
Registered letters posted <sup>1</sup> , ('000)	109	43	56	44
Registered letters received <sup>2</sup> , ('000)	21	21	20	23
Parcels (Total), '000	121	134	195	256
International ordinary parcels ('000)	14	13	18,800	20
Outgoing	408	32	-	-
Incoming ('000)	13	13	18,800	20
EMS ('000)	107	121	176	236
EMS items posted ('000)	94	108	165	225
EMS items received ('000)	13	13	11	12

Note: 1 includes domestic letters posted plus international letters outgoing,

2 only incoming from abroad

Source: Posta Uganda Ltd

## Summary of Gross Domestic Product (GDP) at market prices, 2010 – 2013

	Current price (Bill. Shs)	Constant 2002 price (Bill, Shs)	Constant price % change
<b>Calendar year</b>			
2010	37,412	20,928	6.2
2011	45,944	22,222	6.2
2012	53,202	22,838	2.8
<b>Fiscal year</b>			
2010/11	39,086	21,965	6.6
2011/12	49,849	22,713	3.4
2012/13	54,688	23,870	5.1

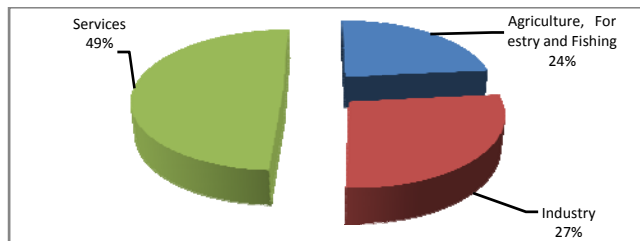
Source: Uganda Bureau of Statistics

## Summary of Per capita Gross Domestic Product (GDP), 2010 – 20113

	Current price (Shs)	Constant 2002 price (Shs)	Constant price % change
<b>Calendar year</b>			
2010	1,156,023	646,665	2.4
2011	1,369,992	662,618	2.5
2012	1,531,227	657,316	(0.8)
<b>Fiscal year</b>			
2010/11	1,186,580	666,833	2.9
2011/12	1,460,502	665,463	(0.2)
2012/13	1,546,731	675,101	1.4

Source: Uganda Bureau of Statistics

Percentage share of GDP at current prices, 2012



GDP by economic activity at current prices, billion shillings, calendar years

	2009	2010	2011	2012
<b>Total GDP at market prices</b>	33,596	37,412	45,944	53,202
<b>Agriculture, forestry and fishing</b>	7,908	8,114	10,514	11,789
<b>Industry</b>	7,979	9,145	11,662	13,665
<b>Services</b>	15,564	17,799	21,133	24,769
<b>Adjustments</b>	2,145	2,354	2,636	2,980

Source: Uganda Bureau of Statistics

GDP by economic activity at current prices, billion shillings, fiscal years

	2009/10	2010/11	2011/12	2012/13
<b>Total GDP at market prices</b>	34,908	39,086	49,849	54,688
<b>Agriculture, forestry and fishing</b>	8,245	8,891	11,966	12,713
<b>Industry</b>	8,675	9,895	13,179	14,550
<b>Services</b>	15,888	18,049	22,265	24,425
<b>Adjustments</b>	2,100	2,250	2,440	2,999

Source: Uganda Bureau of Statistics

## Balance of payments statement, fiscal years (million US \$), 2010/11–2012/13

Item	2010/11	2011/12	2012/13*
A. Current account balance	-1764.61	-2045.63	-1510.10
A1. Goods Account	-2316.08	-2573.20	-1772.21
A2. Services Account	-715.83	-496.58	-400.80
A3. Income Account	-322.11	-423.40	-526.69
A4. Current Transfers	1585.53	1447.54	1189.60
B. Capital & financial a/c balance	1176.21	2528.80	2567.92
B1. Capital Account	0.00	14.50	67.43
B2. Financial Account	1176.21	2514.29	2483.05
Direct Investments	927.78	1373.40	1559.84
Portfolio investment	2.10	263.57	-78.11
Financial derivatives (net)	-2.74	12.32	-0.74
Other investment	249.08	865.01	1002.06
C. Errors and Omissions	-30.02	255.18	-270.85
<b>Overall balance (A + B + C)</b>	<b>-618.42</b>	<b>738.35</b>	<b>786.96</b>
Reserve and Related Items	618.42	-738.35	-786.96
Reserve assets	621.90	-732.28	-469.32
Use of Fund credit and loans	0.00	-2.51	-2.40
Exceptional Financing	-3.48	-3.57	0.40

Note: \* provisional figures

Source: Bank of Uganda

## Composite consumer price index, Uganda (2005/06=100)

Item	weight	2009	2010	2011	2012
<b>Food</b>	27.2	162.1	165.4	218.9	237.6
<b>Beverages &amp; tobacco</b>	4.7	125.9	132.3	153.8	179.1
<b>Clothing &amp; foot wear</b>	4.4	125.9	129.5	164.5	191.1
<b>Rent, fuel &amp; utilities</b>	14.8	145.6	153.1	177.4	214.2
<b>Household &amp; personal goods</b>	4.5	138.5	147.6	181.7	210.3
<b>Transport &amp; communication</b>	12.8	125.1	123.3	117.6	133.7
<b>Education</b>	14.7	123.2	131.3	141.9	164.1
<b>Health, entertainment &amp; others</b>	16.8	129.6	142.2	164.6	190.6
<b>All items index</b>	100.0	139.6	145.2	172.3	196.4

Source: Uganda Bureau of Statistics

## Composite CPI by major groups, Uganda (2005/06=100)

Item	Weight	2009	2010	2011	2012
<b>Food Crops</b>	13.5	154.1	156.4	201.9	221.5
<b>Electricity, Fuel &amp; Utilities</b>	4.9	149.3	151.1	166.7	192.6
<b>Core</b>	81.6	136.3	142.8	167.5	192.1
<b>All items index</b>	100.0	139.6	145.2	172.3	196.4
<b>Annual percentage changes:</b>					
<b>Food Crops</b>	-	32.2	1.5	29.1	9.7
<b>Electricity, Fuel &amp; Utilities</b>	-	-0.4	1.2	10.3	15.5
<b>Core</b>	-	11.0	4.8	17.3	14.7
<b>All items index</b>	-	13.0	4.0	18.7	14.0

Source: Uganda Bureau of Statistics

**Food and Non-Food Items indices (2005/2006 = 100)**

Item	Food	Non Food	All items index
Weight	27.2	72.8	100
<b>Calendar Year</b>			
2009	162.1	130.7	139.6
2010	165.4	137.8	145.2
2011	218.9	154.6	172.3
2012	237.6	180.5	196.4
<b>Fiscal Year</b>			
2008/09	145.5	126.1	131.6
2009/10	168.9	134.5	144.0
2010/11	183.9	142.1	153.4
2011/12	237.3	171.0	189.5

Source: Uganda Bureau of Statistics

**Producer Price Index - Manufacturing (Combined), July- September 2006 = 100**

Industry Group	Weight	2009	2010	2011	2012
All Manufactured Products	1000	170.2	184.3	240.2	252.8
Processed Food	419	191.3	211.1	293.6	303.1
Drinks & Tobacco	185	159.2	182.8	211.6	219.5
Textiles, Clothing & Footwear	42	121.6	125.8	203.4	299.8
Sawmilling, Paper & Printing	48	151.9	169.4	199.0	203.9
Chemicals, Paint, Soap & Foam Products	106	161.6	157.6	215.8	224.3
Bricks & Cement	68	168.1	162.0	186.9	209.0
Metal Products	91	160.7	169.8	209.0	219.3
Miscellaneous	41	154.1	161.2	187.3	209.3

Source: Uganda Bureau of Statistics



**PPI - Hotels and Restaurants Annual indices (Jan 2008- Mar 2008 = 100)**

Industry Group	2009	2010	2011	2012
Hotels and restaurants	115.0	119.8	138.5	146.8
Accommodation	116.8	114.2	130.9	136.3
Hotel accommodation (rooms, suites etc)	116.6	113.5	129.4	136.9
Other hotel services (e.g conference halls)	117.4	116.4	134.9	132.5
Catering services	113.0	126.5	147.4	161.0
Food and snacks	113.4	129.1	153.5	166.2
Buffet	115.8	135.4	154.0	171.8
A' la carte (specific foods)	112.7	127.4	152.4	161.7
Snacks ( light bites, coffee, tea)	111.0	125.2	170.4	206.2
Drinks	112.1	121.1	134.2	149.2
Beer	110.4	120.1	133.1	144.2
Soft drinks (sodas) & mineral water	109.6	115.1	130.0	149.6
Wines & spirits	116.5	128.6	140.2	152.0

Source: Uganda Bureau of Statistics

Construction Sector Price Indices, January-March 2006=100

Sub sector	Weight	2009	2010	2011	2012
<b>All buildings</b>	80	156.7	165.9	208.8	224.6
<b>Residential buildings</b>	30	153.4	159.6	197.7	212.1
Formal	15	150.9	159.9	201.1	216.9
Own-account	15	155.9	159.3	194.4	207.2
<b>Non-Residential buildings</b>	50	158.9	169.7	215.4	232.1
<b>Civil works</b>	20	150.9	176.8	221.8	235.6
Roads paved	10	155.4	184.9	231.2	242.9
Roads gravel	5	141.5	172.8	225.2	236.7
Water projects	5	151.2	164.6	199.9	220.1
<b>Whole sector</b>	100	155.5	168.1	211.4	226.8

Source: Uganda Bureau of Statistics

## Summary of external trade statistics, (million US \$), 2009–2012

Trade Flow	2009	2010	2011	2012
Informal Exports	799	528	356	454
Formal/Official Exports	1,568	1,619	2,159	2,358
Total Exports	2,366	2,147	2,515	2,811
Informal Imports	82	67	54	53
Formal/Official Imports	4,258	4,664	5,631	6,043
Total Imports	4,340	4,731	5,685	6,096
Trade Balance	(1,974)	(2,584)	(3,170)	(3,285)
% change (Exports)	(6.6)	(9.3)	17.1	11.8
% change (Imports)	(5.7)	9.0	20.2	7.2

Source: Uganda Bureau of Statistics, URA, UCDA, UETCL, TOTAL U LTD, SHELL U LTD and UTA

## Value of imports by region of origin (mill US \$), 2009 – 2012

Region	2009	2010	2011	2012
COMESA	657.9	671.2	798.2	761.0
Other Africa	299.9	321.6	350.1	400.2
Asia	1,612.4	1,976.8	2,583.7	2,978.4
European Union	752.8	727.5	713.4	653.3
Other Europe	97.9	93.2	93.2	100.8
Middle East	688.8	747.8	840.7	922.0
North America	138.3	124.6	197.5	121.0
South America	78.6	62.3	72.1	121.1
Rest of the World	13.1	5.7	35.8	37.9

Source: Uganda Bureau of Statistics, URA, UCDA, CAA and UETCL

Value of exports by region of destination (mill US \$), 2009 – 2012

Region	2009	2010	2011	2012
<b>COMESA</b>	1,450.7	1,266.1	1,324.0	1,623.1
Other Africa	132.7	111.8	99.2	132.8
Europe	442.5	430.9	600.3	540.5
European Union	345.0	365.7	475.9	412.2
Other Europe	97.5	65.2	124.4	128.3
North America	38.5	23.8	39.7	25.9
Middle East	96.4	131.2	159.8	190.5
Asia	104.8	106.4	184.5	156.9
South America	0.9	2.0	2.1	2.7
Rest of the World	0.8	2.4	1.0	2.4
Unknown	47.5	98.9	72.2	136.4

Source: Uganda Bureau of Statistics

## Summary of Central Government Budgetary &amp; Financial Operations, (bill shs)\*

Description	Outturn	Outturn	Outturn	Budget
	2009/10	2010/11	2011/12	2012/13
Revenue	5,183.1	7,292.5	7,763.4	8,698.5
Taxes	4,205.7	5,114.2	6,135.9	7,284.7
Grants	863.6	890.5	1,129.3	1,242.8
Oil Revenues		1,192.7	392.3	-
Other revenue	113.9	95.1	105.9	171.1
Expenses	5,694.2	7,408.5	7,176.9	7,291.4
Compensation of employees	706.1	985.0	1,199.0	1,367.5
Use of goods and services/1	1,874.1	2,715.9	2,001.2	1,531.4
Interest payments	385.1	423.5	603.3	840.4
Subsidies	87.4	184.0	186.8	68.8
Grants	2,201.1	2,644.7	2,783.0	3,171.0
Social benefits (pensions)	222.4	203.2	201.1	260.5
Other expenses/1	218.1	252.1	202.6	51.8
Gross operating balance	-511.1	-116.0	586.4	1,407.1
Investment in Non-Financial	1,091.3	1,400.5	1,846.9	3,611.9
Net borrowing	-1,602.3	-1,516.5	-1,260.4	-2,204.7
Overall deficit excluding grants	-2,511.6	-2,570.5	-2,639.2	-3,470.7
Overall deficit including grants	-1,648.0	-1,680.0	-1,510.0	-2,227.9
Net Change in Financial Worth	-1,648.0	-1,680.0	-1,510.0	-2,227.9
Domestic	-701.5	-1,104.3	-24.6	-978.8
External	-758.3	-724.1	-1,153.9	-1,249.1
Errors and omissions	-188.2	148.4	-331.4	-

Notes: 1/ excludes transfers to local governments and extra-budgetary institutions

2/all transfers include salaries, non-wage and development related spending

\* this presentation is in line with the 2001 GFS Manual

Source: Ministry of Finance, Planning and Economic Development

## Monetary Survey (billion shillings), June 2009 – June 2012

	2009	2010	2011	2012
<b>1 Net Foreign Assets</b>	5,711.5	6,383.9	7,444.4	8,754.2
Monetary Authority	5,119.5	5,740.9	6,874.2	7,466.3
o/w Foreign Reserves	5,040.5	5,445.0	5,361.7	6,536.3
Commercial Bank (net)	592.0	643.0	570.1	1,287.9
<b>2 Net Domestic Credit</b>	3,122.8	4,815.2	7,225.5	6,712.8
Claims on Central Government (net)	-512.2	251.7	673.1	-564.6
Claims on Parastatals (Crop finance)	35.4	52.6	38.8	38.6
Claims on Local Government	0.0	0.9	0.9	0.3
Claims on the Private Sector	3,599.5	4,510.1	6,512.7	7,238.5
<b>3 Other Items (net)</b>	-2,536.7	-2,906.0	-4,232.1	-4,256.4
Revaluation	-334.4	87.3	119.9	643.2
Other (net)	-2,258.3	-3,054.0	-4,328.8	-4,930.0
Reporting Error	56.0	60.8	-23.2	30.4
<b>4 Money Supply</b>				
Broad Money - M3	6,297.6	8,293.1	10,437.8	11,210.7
Foreign Exchange Accounts	1,376.9	1,881.4	2,492.0	3,607.7
Broad Money - M2 A	4,920.7	6,411.7	7,945.8	7,603.0
Broad Money - M2	4,920.7	6,411.7	7,945.8	7,603.0

Source: Bank of Uganda

Structure of Interest Rates (billion shillings), 2009 – 2012

	2009	2010	2011	2012
	June	June	June	June
Bank of Uganda				
Ways and Means	6.0	4.3	12.1	16.7
Re-discount rate	9.6	7.4	15.7	24.0
Bank Rate to commercial Banks	10.6	8.4	16.7	25.0
Treasury Bills				
91 Days	6.0	4.3	12.1	16.7
182 Days	10.0	5.5	12.4	17.1
273 Days	...	...	...	...
364 Days	12.3	6.9	12.6	16.1
Commercial Banks				
Deposit Rates :				
Demand Deposits	1.3	1.2	1.1	1.3
Savings Deposits	2.4	1.7	2.3	3.2
Time Deposits :				
7-12 Months	10.7	7.3	11.0	17.7
Lending Rates :				
Agriculture	21.8	20.1	19.9	27.0
Export & Manufacturing	21.8	20.1	19.9	27.0
Commerce	21.8	20.1	19.9	27.0
Unsecured	21.8	20.1	19.9	27.0

Source: Bank of Uganda

**Foreign Exchange Rates (Uganda shillings per US\$), 2009– 2012**

	2009	2010	2011	2012
<b>Bureau weighted average</b>				
Buying Rate	2,022	2,170	2,509	2,494
Selling Rate	2,031	2,179	2,523	2,504
Bureau middle rate	2,027	2,175	2,516	2,499
Inter-bank middle rate	2,031	2,178	2,523	2,505

Source: Bank of Uganda



**UGANDA DIPLOMATIC MISSIONS ABROAD**

---

**AUSTRALIA - CANBERRA**

**High Commission of the Republic of Uganda**

7 Dunoon Street,

P. O Box 34 Woden, ACT 2606, Australia

Tel: 61-2-62829645 Fax: 61-2-6286-1243

Email: [ugandahc@velocitynet.com.au](mailto:ugandahc@velocitynet.com.au)

**BELGIUM – BRUSSELS**

**Embassy of the Republic of Uganda & Permanent Mission to the European Union**

Avenue De Tervuren 317,1150 Brussels

Tel: 3-22-7625825

Fax: 3-22-7630438 Telex: 62814 UGAMEC

E-mail: [ugembrus@brutele.be](mailto:ugembrus@brutele.be)

**BUJUMBURA – BURUNDI**

**Embassy of the Republic of Uganda**

White stone building

1<sup>st</sup> floor north wing. B.p 5155 Mutanga.

Tel: 03822274611/2/4 Fax: 003822274613

**CANADA – OTTAWA**

**The High Commission For the Republic of Uganda**

231, Cobourg Street, Ottawa, Ontario, Canada K1L 8J2

Tel: 1-613-789-7797 /7890110/7890133

Fax: 1-613-789-8909

E-mail: [uhc@Ugandahighcommission.com](mailto:uhc@Ugandahighcommission.com)

Website: [www.Ugandahighcommission.ca](http://www.Ugandahighcommission.ca)

**PEOPLE'S REPUBLIC OF CHINA – BEIJING**

**Embassy of the Republic of Uganda**

5, San li tun Dong Jie, Beijing 100600, People's Republic of China

**Tel:** 00-86-10-65321708/65321645/65322370

**Fax:** 00-86-10-65322242

**Email:** [info@ugandaembassy.cn](mailto:info@ugandaembassy.cn)

**Website:** [www.ugandaembassy.cn](http://www.ugandaembassy.cn)

**DEMOCRATIC REPUBLIC OF CONGO - KINSHASA**

**Embassy of the Republic of Uganda**

Av des Cocotiers, Plot no. 15

Place Wenge, Commune de la Gombe

B.P. 8804 KINSHASA – 1, KINSHASA, DRC

**Tel:** +243 810 507 179 ; +243 810 519260

**Email:** [ugambassy@simbatel.com](mailto:ugambassy@simbatel.com), [ugambassy@yahoo.com](mailto:ugambassy@yahoo.com)

**DENMARK – COPENHAGEN**

**Embassy of the Republic of Uganda**

Sofievej 15, DK-2900, Hellerup, Denmark

**Tel:** 000-45-39-620966 **Fax:** 000-45-39-610148

**Email:** [ugambassy@yahoo.com](mailto:ugambassy@yahoo.com)

**Website:** [www.Ugandaembassy.dk](http://www.Ugandaembassy.dk)

**ABU DHABI – U.A.E**

**Embassy of the Republic of Uganda**

VILLA NO.28 WEST

17/02A /Falah Street

9 Al- batten Abu Dhabi

P. O. Box 113308 Abu Dhabi-U.A.E

**Tel:** +97126659931 **Fax:** +97126659934

**EGYPT – CAIRO**

**Embassy of the Republic of Uganda**

66 Road 10 Maadi, Cairo

**Tel:** 00020-2-3802514/3802489

**Fax:** 00020-223802504

**Email:** [ugambassy@yahoo.com](mailto:ugambassy@yahoo.com)

**ETHIOPIA – ADDIS ABABA**

**Embassy of the Republic of Uganda**

Kirkos Kifle Ketema, Kebele 35, H. No. 031

P. O. Box 5644, Addis Ababa, Ethiopia

**Tel:** -251-1-5513114/ **Fax:**-251-1-5514355

**E.mail:** [uganda.emb@ethionet.et](mailto:uganda.emb@ethionet.et)

**GERMANY - BERLIN,**

**Embassy of the Republic of Uganda**

Flat no. 0391, Heinrich - Heine Str. 18, 10179 Berlin

**Tel:** 049-30-24047556/ 2060990

**Fax:** 049-30-24047557

**Email:** [ugembassy@yahoo.de](mailto:ugembassy@yahoo.de)

**Website:** [www.uganda.de](http://www.uganda.de)

**INDIA – NEW DELHI**

**The High Commission of the Republic of Uganda**

B-3/26, Vasant Vihar, New Delhi – 110 057, India

**Tel:** 91-11-2614 4413 , 91-11-2614 5817 ,919818091518,919810868659,919818932476

**Fax:** 91-11-2614 4405

**Email:** [ughcom@ndb.vsnl.net.in](mailto:ughcom@ndb.vsnl.net.in)

**IRAN - TEHRAN,**

**Embassy of the Republic of Uganda**

110 Malek Street, Shariati Avenue, TEHRAN, IRAN

**Tel:** 00098-22600465/22633198

**Fax:** 00098-2122009764

**Email:** [uganda\\_teh@yahoo.com](mailto:uganda_teh@yahoo.com)

**ITALY – ROME**

**Embassy of the Republic of Uganda**

Lungotevere dei Mellini, 44

Scala Valadier, int B, 00193, Roma

**Tel:** 00-39-06-3225220/ 3207232, **Fax:** 00-39-06-3213688

**Email:** [ugandaembassyrome@hotmail.com](mailto:ugandaembassyrome@hotmail.com)

**JAPAN – TOKYO**

**Embassy of the Republic of Uganda**

9-23 Hachiyama-cho, Shibuya-ku, Tokyo

150-0035 Japan

**Tel:** -81-3-3462-7107, **Fax:** -81-3-3462-7108

**Email:** [ugabassy@hpo.net](mailto:ugabassy@hpo.net)

**Website:** <http://www.uganda-embassy.jp>

**KENYA – NAIROBI**

**The High Commission of the Republic of Uganda**

Riverside Paddock, off Riverside Drive

P.O. Box 60853, Nairobi

**Tel:** 005-20(2217447). **Fax:** 005-20(2217234)

**Email:** [ugacomrb@todays.co.ke](mailto:ugacomrb@todays.co.ke); [ugahicom@todaysonline.com](mailto:ugahicom@todaysonline.com)

**Website:** [www.ugandahighcommission.co.ke](http://www.ugandahighcommission.co.ke)

**Commercial and Consular Section**

Uganda House 1st Floor, Kenyatta Avenue, Nairobi.

**Tel:** (254)-(20)- 311814, **Fax:** (254)-(20)-311806

Email: [ugahicom@todays.co.ke](mailto:ugahicom@todays.co.ke)

**Uganda Honorary Consulate: Mombasa**

Tel: (254)-(011)-222105, Fax: (254)-(011)-223733

Email: [asiimwe@africaonline.co.ke](mailto:asiimwe@africaonline.co.ke)

**LIBYA - TRIPOLI**

**Embassy of the Republic of Uganda**

Jaraba Street, Ben Ashur Tripoli, Libya

P.O. Box 80215

Tel: 00-218-21- 604471 /4892632/3603083

Fax: 00-218-21-4892632

Email: [info@ugembassylibya.org](mailto:info@ugembassylibya.org)

Website: [www.ugembassylibya.org](http://www.ugembassylibya.org)

**RUSSIA - MOSCOW**

**Embassy of the Republic of Uganda**

Korovy Val 7, Flat No. 3, 119049 Moscow

Tel 7-499-2302276 , Fax: 7-495-2302131

Email: [info@uganda.ru](mailto:info@uganda.ru).

Website: [www.uganda.ru](http://www.uganda.ru)

**NIGERIA – ABUJA**

**High Commission of the Republic of Uganda**

Plot 28Ontario Crescent, Off Mississippi Street

Ministers' Hill Maitama, Abuja

Postal Address: P.M.B. 223 Abuja

Tel: 234-9-4620601, Fax: 234-9-4620600

Email: [ugandabuja@surichtech.com](mailto:ugandabuja@surichtech.com)

**FRANCE - PARIS**

**Embassy of the Republic of Uganda**

13 Avenue Raymond Poincare  
75116 Paris

**Tel:** 33-1-56 90 12 20 , **Fax:** 33-1-45 05 21 22

**Email:** [uganda.embassy@club-internet.fr](mailto:uganda.embassy@club-internet.fr)

**RWANDA – KIGALI**

**High Commission of the Republic of Uganda**

31, Avenue de la Paix,  
B.P. 656, Kigali, Rwanda

**Tel:** 252503537/38 , **Fax:** 0037-252503537

**Email:** [embassy@ugandaembassy.rw](mailto:embassy@ugandaembassy.rw)

**Web site:** [www.ugandaembassy.rw](http://www.ugandaembassy.rw)

**SAUDI ARABIA - RIYADH**

**Embassy of the Republic of Uganda**

11, Hassan Bin Al-Numaman Street, West of Salahddin Hotel,  
Al Worood Quarter, P.O. Box 94344, Riyadh  
11693 K.S.A

**Tel:** +966-1-454 4910, **Fax:** +966-1-454 9264

**Email:** [ugarivadh@hotmail.com](mailto:ugarivadh@hotmail.com)

**SUDAN – KHARTOUM**

**Embassy of the Republic of Uganda**

house no. 6, square no. 42, Abu Garja Street  
Khartoum East, P.O. Box 2676 Khartoum

**Tel:** 249-183-797867/9, **Fax:** 0249-183-797868

**Email:** [embassy@ugandaembassyinsudan.org](mailto:embassy@ugandaembassyinsudan.org)

**Website:** [www.ugandaembassyinsudan.org](http://www.ugandaembassyinsudan.org)

**SOUTH SUDAN - JUBA**

**Consulate of the Republic of Uganda**

P.O. Box 66, Juba, Southern Sudan

**Tel:** +00249-047710258/047710367

**Fax:** +249 811 821 555

**Satellite:** 08221655522258

**Email:** [consulate@ugandaconsulate-iuba.org](mailto:consulate@ugandaconsulate-iuba.org); [uqaconsul.iuba@yahoo.com](mailto:uqaconsul.iuba@yahoo.com)

**Website:** [www.ugandaconsulate-iuba.org](http://www.ugandaconsulate-iuba.org)

**SOUTH AFRICA – PRETORIA**

**The High Commissioner of the Republic of Uganda**

Trafalgar Court, Apartment 35B, 634 Park Street, Arcadia 0083 Pretoria

**Tel:** -27-12-3426031/34, **Fax:** -27-12-3426206

**Email:** [ugacomer@mweb.co.za](mailto:ugacomer@mweb.co.za)

**TANZANIA – DAR-ES-SALAAM**

**The High Commission of the Republic of Uganda**

Extelcom Building, Floor 7, Samora Avenue, P.O. Box 6237, Dar-es-Salaam

**Tel:** -7-222-667391, **Fax:** -7-222-667224

**Email:** [ugadar@intafrika.com](mailto:ugadar@intafrika.com)

**UNITED KINGDOM – LONDON**

**The High Commission of the Republic of Uganda**

Uganda House, 58 - 59, Trafalgar Square London WD2N 5DX

**Tel:** 44-207-8395783, **Fax:** -44-207-8398925

**Email:** [info@ugandahighcommission.co.uk](mailto:info@ugandahighcommission.co.uk)

**Website:** [www.ugandahighcommission.co.uk](http://www.ugandahighcommission.co.uk)

**UNITED NATIONS ORGANISATIONS – NEW YORK**

**Permanent Mission of the Republic of Uganda to the United Nations**

Uganda House, 336 East, 45th Street, New York, NY 10017 -3489

**Tel:** +1-212-949-0110

**Fax:** +1-212-6874517/3220

**Email:** [ugandaunny@un.int](mailto:ugandaunny@un.int)

**Website:** [www.ugandamissionun.org](http://www.ugandamissionun.org)

**UNITED NATIONS ORGANISATIONS – GENEVA**

**Permanent Mission of the Republic of Uganda to the United Nations**

Office and other International Organisations, Geneva

Rue Antoine Carteret 6 Bis 1202 Geneva Switzerland

**Tel:** 00-41-22-3398810/12/13

**Fax:** +41-22-3407030

**Email:** [mission.uganda@ties.itu.int](mailto:mission.uganda@ties.itu.int)

**UNITED STATES OF AMERICA – WASHINGTON D.C**

**Embassy of the Republic of Uganda**

5911, 16th Street, N.W. Washington D.C. 20011

**Tel:** + 1-202-726-7100

**Fax:** +1-202-7261727

**Email:** [ugembassy@aol.com](mailto:ugembassy@aol.com)

**Website:** [www.ugandaembassyus.org](http://www.ugandaembassyus.org)



## REGULAR UBOS PUBLICATIONS

---

### Monthly

Consumer Price Index (CPI)

### Quarterly

Quarterly National accounts (QNA)

Index of Industrial Production (IIP)

Producer Price Index (PPI)

Key Economic Indicators (KEI)

Construction Sector Index (CSI)

### Annual

Statistical Abstract

Uganda in Figures

UBOS News letter

Every after five years

Uganda Demographic and Health Survey (Summary papers & Main report)

### Decennial

Population and Housing Census (District summaries, National summaries & Main report)

### Others

The Informal Cross Border Trade Survey Report

Compendium of Statistical Concepts and Definitions Meta Data Dictionary

Uganda National Household Budget Survey Report

External Trade Statistics Bulletin



Uganda Bureau of Statistics,  
Plot 9 Colville Street,  
P.O. Box 7186,  
Kampala, Uganda.  
TEL: + (256) 41 706000 ☐  
FAX : + (256) 41 237553  
Email: [ubos@ubos.org](mailto:ubos@ubos.org)  
Website: [www.ubos.org](http://www.ubos.org)

**2014 Census Hotline: +256 392 902 551**

Counting for Planning and Improved Service Delivery