



Construction Sector Indices

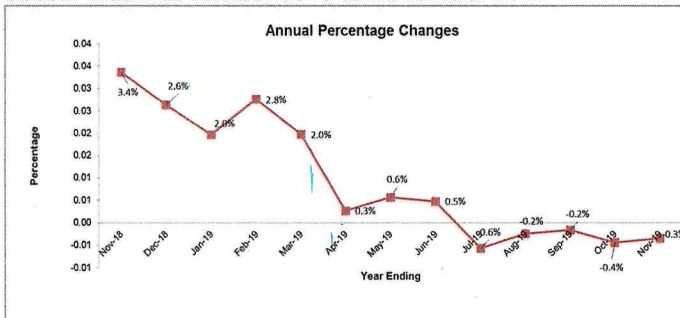
November 2019

HIGHLIGHTS

Annual Changes:

The average input prices for the Whole Construction Sector (covering material prices, wage rates & equipment hire rates) decreased by 0.3% for the year ending November 2019 compared to 3.4% increase for the year ended November 2018.

Fig 1: Annual Price Changes at the Whole Construction Sector Index November 2018 to November 2019



Monthly Changes

On a month to month basis, prices of inputs into the Whole Construction Sector did not register significant changes in the month of November compared to a 0.2% decrease registered for the month of October 2019 mainly due to;

Fig 2: Monthly Price Changes at the Whole Construction Sector Index, November 2018 to November 2019



The main contributors to the annual decrease in input prices of 0.3% were:

- A decrease of 0.1% prices of inputs for Non-Residential Buildings and 0.2% in prices of inputs for Residential buildings
- A decrease of 1.3% in prices of inputs for Civil works.

Material Inputs (Basic Headings) - Monthly Changes

Monthly, prices of material inputs, equipment hire and wage rates in November 2019 showed both decreasing and increasing trends. Those with notable changes are;

- Other Iron & Steel decreased by 1.6%
- Diesel increased by 0.4%

Chris N. Mukiza (PhD)
Executive Director

Thursday 19th December 2019

Notes: 1 This release contains composite input price indices for the construction sector and their "basic heading" Components.

2 To obtain the percentage change in prices between any two periods, divide the index number in the second period by the index number in the first period, subtract 1 and multiply the result by 100.

3. Comments can be addressed to: Mr Peter Opio, Director, Business & Industry Statistics, Uganda Bureau of Statistics on email peter.opio@ubos.org & phone no: 0414 706016 or 0711 706017 (Mob).

The next release will be in the fourth week of January, 2019

Percentage change since previous year														
Sector	Weights	Nov-18	Dec-18	Jan-19	Feb-19	Mar-19	Apr-19	May-19	Jun-19	Jul-19	Aug-19	Sep-19	Oct-19	Nov-19
Whole sector	100	3.4%	2.6%	2.0%	2.8%	2.1%	0.3%	0.6%	0.5%	-0.6%	-0.2%	-0.2%	-0.4%	-0.3%
All buildings Total	0	3.0%	2.4%	1.7%	2.6%	1.9%	0.0%	0.5%	0.5%	-0.6%	-0.2%	0.0%	-0.2%	-0.1%
Residential building:	30	3.1%	2.1%	1.1%	2.3%	1.3%	-1.1%	0.0%	0.3%	-0.7%	-0.2%	0.0%	-0.2%	-0.2%
Formal	15	1.9%	1.5%	0.5%	1.4%	0.5%	-0.4%	-0.3%	-0.5%	-0.9%	-0.4%	-0.2%	-0.4%	-0.4%
Own-account	15	4.3%	2.8%	1.7%	3.3%	2.1%	-1.8%	0.3%	1.1%	-0.6%	0.1%	0.2%	0.0%	0.0%
Non-res buildings	50	2.9%	2.6%	2.1%	2.7%	2.3%	0.7%	0.7%	0.6%	-0.5%	-0.2%	0.0%	-0.1%	-0.1%
Civil works	20	4.9%	3.4%	2.8%	3.5%	2.6%	1.3%	1.0%	0.4%	-0.5%	-0.6%	-0.9%	-1.5%	-1.3%
Roads paved	10	4.8%	3.1%	2.8%	3.3%	2.5%	1.0%	0.9%	0.4%	-0.8%	-0.8%	-1.0%	-1.8%	-1.5%
Roads gravel	5	10.4%	8.2%	6.7%	7.7%	6.4%	3.9%	3.0%	1.6%	0.3%	-0.2%	-1.0%	-1.9%	-1.6%
Water projects	5	-0.2%	-0.4%	-0.9%	-0.4%	-0.9%	-0.9%	-0.7%	-0.8%	-0.8%	-0.4%	-0.3%	-0.5%	-0.4%
Percentage change since previous month														
Sector	Weights	Nov-18	Dec-18	Jan-19	Feb-19	Mar-19	Apr-19	May-19	Jun-19	Jul-19	Aug-19	Sep-19	Oct-19	Nov-19
Whole sector	100	-0.13%	-0.03%	0.06%	0.05%	0.04%	-0.03%	0.14%	0.07%	-0.11%	-0.20%	-0.05%	-0.19%	0.0%
All buildings Total	0	-0.11%	-0.02%	0.04%	0.09%	0.07%	-0.05%	0.17%	0.06%	-0.08%	-0.16%	0.00%	-0.15%	-0.1%
Residential building:	30	-0.07%	-0.09%	0.12%	0.08%	0.13%	-0.15%	0.30%	0.11%	-0.17%	-0.19%	0.00%	-0.23%	-0.1%
Formal	15	-0.07%	0.04%	0.00%	-0.01%	0.03%	0.02%	0.16%	0.01%	-0.09%	-0.27%	0.01%	-0.19%	-0.1%
Own-account	15	-0.08%	-0.23%	0.24%	0.17%	0.23%	-0.32%	0.44%	0.21%	-0.26%	-0.12%	0.00%	-0.26%	0.0%
Non-res buildings	50	-0.13%	0.03%	0.00%	0.10%	0.04%	0.01%	0.10%	0.03%	-0.03%	-0.15%	-0.01%	-0.11%	-0.1%
Civil works	20	-0.19%	-0.09%	0.16%	-0.12%	-0.08%	0.06%	0.03%	0.11%	-0.21%	-0.35%	-0.21%	-0.37%	0.0%
Roads paved	10	-0.25%	-0.43%	0.44%	-0.15%	-0.14%	0.13%	0.03%	0.17%	-0.37%	-0.42%	-0.19%	-0.39%	0.1%
Roads gravel	5	-0.10%	0.54%	-0.25%	-0.21%	-0.05%	-0.03%	-0.01%	0.06%	-0.04%	-0.35%	-0.43%	-0.51%	0.1%
Water projects	5	-0.17%	-0.01%	0.00%	0.03%	0.01%	0.01%	0.09%	0.04%	-0.05%	-0.21%	-0.03%	-0.17%	-0.1%

Statistical Release Table A
Construction sector price indices

Jan-Mar 2006 = 100

	Whole sector		All buildings		Residential buildings					
					Total		Formal		Own-account	
	2018	2019	2018	2019	2018	2019	2018	2019	2018	2019
Year	243.74		237.11		217.19		252.17		183.00	
Q1	239.81	245.15	233.46	238.29	214.31	217.65	249.99	252.07	179.71	183.87
Q2	244.29	245.35	237.86	238.62	218.64	218.02	253.43	252.41	184.54	184.25
Q3	245.76	244.96	239.00	238.40	218.39	217.74	253.15	251.89	184.32	184.15
Q4	245.10		238.12		217.41		252.08		183.45	
Jan	240.39	245.10	234.01	238.11	215.13	217.47	250.75	252.08	180.54	183.55
Feb	238.65	245.22	232.35	238.33	212.68	217.65	248.48	252.05	178.05	183.87
Mar	240.39	245.13	234.01	238.42	215.13	217.84	250.75	252.07	180.54	184.18
Apr	244.41	245.06	238.26	238.30	219.94	217.52	253.23	252.13	186.90	183.59
May	244.02	245.41	237.63	238.71	218.15	218.16	253.17	252.52	183.90	184.39
Jun	244.42	245.59	237.69	238.85	217.84	218.40	253.89	252.56	182.83	184.77
Jul	246.73	245.33	240.07	238.66	219.65	218.02	254.68	252.34	185.33	184.29
Aug	245.44	244.84	238.67	238.27	217.98	217.60	252.66	251.66	183.99	184.08
Sep	245.13	244.73	238.25	238.26	217.54	217.61	252.12	251.68	183.64	184.08
Oct	245.33	244.25	238.31	237.91	217.58	217.11	252.16	251.19	183.68	183.60
Nov	245.01	244.16	238.04	237.77	217.43	216.97	251.99	250.87	183.54	183.59
Dec	244.94		238.01		217.22		252.09		183.11	

	Non-res buildings		Civil works		Roads paved		Roads gravel		Water projects	
	2018	2019	2018	2019	2018	2019	2018	2019	2018	2019
Year	248.92		278.97		290.42		296.15		246.02	
Q1	244.78	250.57	273.65	281.52	284.90	292.79	284.47	303.58	246.50	244.71
Q2	249.20	250.88	278.56	281.10	290.17	292.48	293.85	302.16	246.94	244.96
Q3	251.26	250.70	281.69	279.89	293.32	290.75	301.91	301.04	245.82	244.61
Q4	250.46		281.97		293.27		304.37		244.83	
Jan	245.16	250.39	274.36	282.07	285.59	293.46	285.59	304.59	246.90	244.67
Feb	244.03	250.65	272.23	281.72	283.52	293.02	282.22	303.94	245.70	244.73
Mar	245.16	250.67	274.36	280.76	285.59	291.90	285.59	302.20	246.90	244.74
Apr	249.00	250.69	277.41	280.93	289.25	292.27	290.90	302.12	246.91	244.77
May	249.15	250.94	278.12	281.03	289.69	292.35	293.19	302.09	246.76	245.00
Jun	249.46	251.01	280.15	281.34	291.58	292.83	297.46	302.28	247.14	245.10
Jul	252.19	250.95	282.15	280.75	293.96	291.75	301.17	302.17	247.01	244.98
Aug	250.99	250.59	281.35	279.76	292.97	290.53	301.69	301.12	245.41	244.47
Sep	250.58	250.56	281.56	279.17	293.03	289.97	302.89	299.83	245.05	244.39
Oct	250.66	250.30	282.42	278.14	294.19	288.83	304.04	298.32	245.11	243.96
Nov	250.32	250.16	281.87	278.26	293.45	289.05	303.73	298.75	244.70	243.67
Dec	250.40		281.62		292.18		305.35		244.67	

Source: Uganda Bureau of Statistics

Statistical Release Table B

Basic heading price indices, CPI Rescaled and Equipment charge out rates and cement quantities

Jan-Mar 2006 = 100

	Timber		Paint		PVC/HDPE pipes		Water tanks		Burnt clay bricks & tiles	
	2018	2019	2018	2019	2018	2019	2018	2019	2018	2019
Year	250.74		191.89		187.15		157.56		285.25	
Q1	246.13	258.43	184.18	198.13	187.15	187.15	159.35	156.73	285.18	287.00
Q2	249.21	261.50	189.09	198.14	187.15	187.15	157.42	156.73	285.35	287.62
Q3	252.28	264.58	196.14	197.31	187.15	187.15	156.73	156.73	285.24	287.58
Q4	255.35		198.16		187.15		156.73		285.24	
Jan	245.11	257.40	180.12	198.16	187.15	187.15	163.23	156.73	285.18	285.24
Feb	246.13	258.43	186.22	198.10	187.15	187.15	157.42	156.73	285.18	287.88
Mar	247.16	259.45	186.22	198.14	187.15	187.15	157.42	156.73	285.18	287.88
Apr	248.18	260.48	186.22	198.14	187.15	187.15	157.42	156.73	285.18	287.88
May	249.21	261.50	186.22	198.14	187.15	187.15	157.42	156.73	285.62	287.41
Jun	250.23	262.53	194.84	198.14	187.15	187.15	157.42	156.73	285.24	287.58
Jul	251.26	263.55	194.84	198.14	187.15	187.15	156.73	156.73	285.24	287.58
Aug	252.28	264.58	196.72	197.13	187.15	187.15	156.73	156.73	285.24	287.58
Sep	253.31	265.60	196.87	196.66	187.15	187.15	156.73	156.73	285.24	287.58
Oct	254.33	266.63	198.16	196.58	187.15	187.15	156.73	156.73	285.24	287.58
Nov	255.35	267.65	198.16	196.58	187.15	187.15	156.73	156.73	285.24	287.58
Dec	256.38		198.16		187.15		156.73		285.24	

	Cement		Concrete articles		Steel bars		Roofing sheets		Other iron & steel	
	2018	2019	2018	2019	2018	2019	2018	2019	2018	2019
Year	178.13		225.04		294.84		235.80		240.40	
Q1	180.12	173.69	219.74	226.98	300.68	283.82	226.92	237.70	244.94	229.10
Q2	183.12	172.86	226.71	226.90	304.47	282.97	239.88	238.44	250.12	229.03
Q3	176.78	171.48	226.87	227.77	288.35	280.91	238.35	232.22	235.98	223.92
Q4	172.51		226.86		285.87		238.07		230.55	
Jan	178.61	173.40	213.57	226.98	300.38	284.80	221.76	238.46	239.77	229.89
Feb	180.39	173.83	218.95	226.98	299.25	283.10	223.83	237.04	242.01	228.73
Mar	181.36	173.83	226.71	226.98	302.41	283.57	235.15	237.59	253.03	228.66
Apr	182.54	173.83	226.71	226.98	303.72	283.58	237.41	238.50	251.94	229.09
May	183.88	172.37	226.71	226.76	303.72	282.82	238.46	238.91	248.76	229.14
Jun	182.93	172.37	226.71	226.98	305.97	282.49	243.76	237.91	249.65	228.85
Jul	181.31	172.37	226.87	226.98	292.05	282.38	241.37	234.02	245.51	227.41
Aug	176.97	171.03	226.87	226.98	286.49	282.37	235.85	233.58	231.39	222.49
Sep	172.07	171.03	226.87	229.34	286.50	277.98	237.84	229.06	231.05	221.87
Oct	172.07	171.03	226.64	229.33	289.25	274.88	237.75	226.97	231.05	217.67
Nov	172.07	171.03	226.98	229.33	283.92	274.88	238.14	226.97	230.53	214.24
Dec	173.40		226.98		284.45		238.32		230.05	

Source: Uganda Bureau of Statistics

Statistical Release Table B (continued)

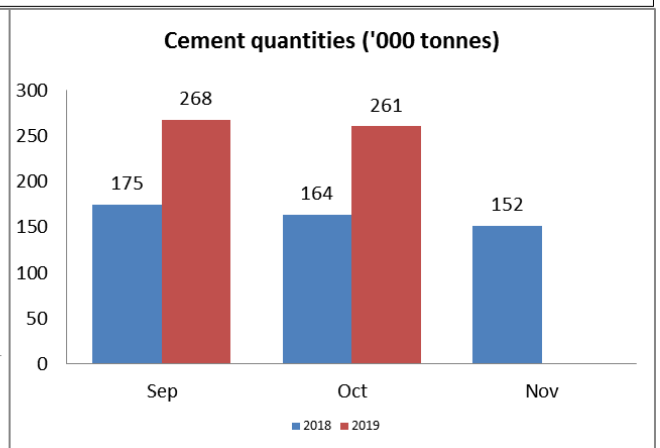
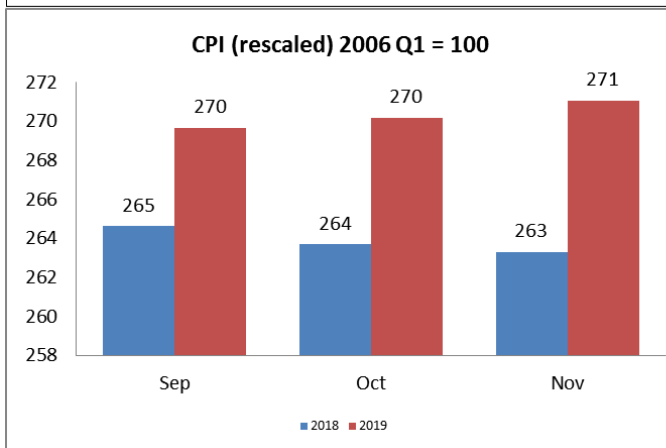
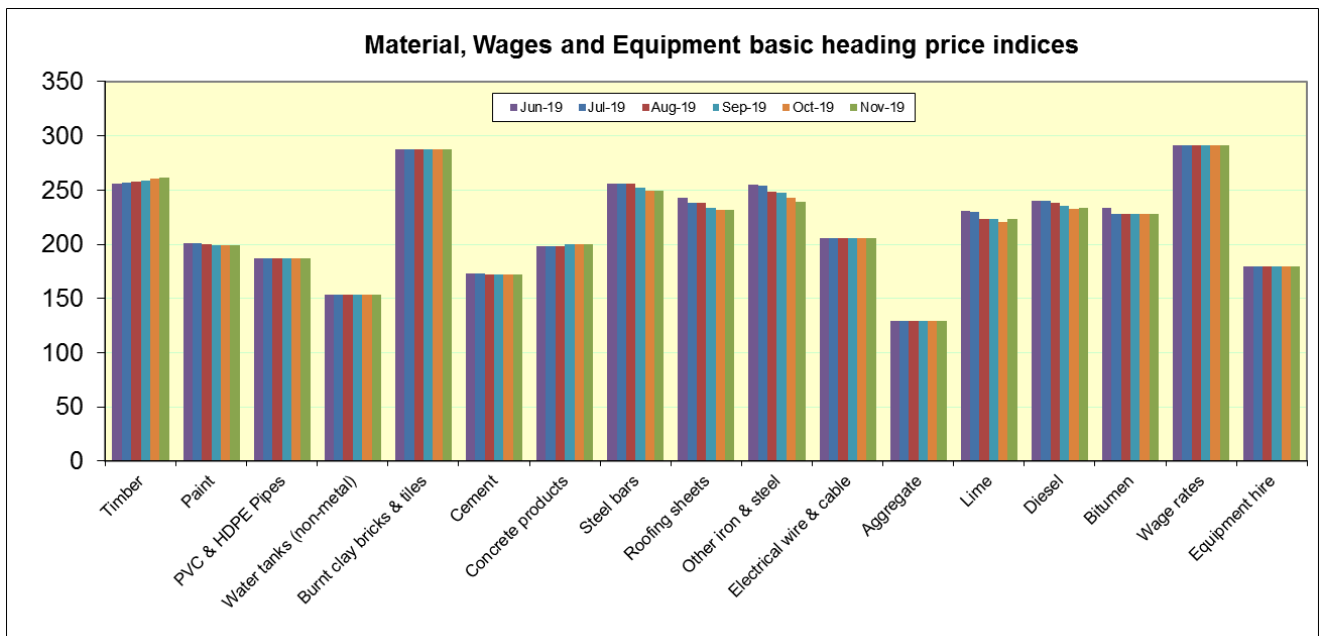
Basic heading price indices, CPI Rescaled and Equipment charge out rates and cement quantities

Jan-Mar 2006 = 100

	Electrical wire & cable		Aggregate		Lime		Diesel		Bitumen	
	2018	2019	2018	2019	2018	2019	2018	2019	2018	2019
Year	196.04		99.64		225.92		263.73		187.65	
Q1	186.27	203.33	90.39	108.89	215.08	230.88	233.66	282.46	187.22	187.22
Q2	191.74	203.48	90.39	108.89	226.68	230.70	260.69	278.63	187.96	188.16
Q3	202.92	203.47	108.89	108.89	233.17	227.29	277.15	275.52	187.79	183.52
Q4	203.21		108.89		228.75		283.44		187.62	
Jan	186.14	203.05	90.39	108.89	214.66	233.26	221.41	284.63	187.18	187.25
Feb	186.11	203.47	90.39	108.89	215.62	232.16	236.18	283.23	187.16	187.14
Mar	186.55	203.47	90.39	108.89	214.97	227.23	243.40	279.50	187.33	187.28
Apr	191.68	203.48	90.39	108.89	232.10	230.10	254.77	279.33	187.58	188.12
May	192.25	203.48	90.39	108.89	226.35	229.08	259.69	278.34	187.81	188.24
Jun	191.30	203.48	90.39	108.89	221.58	232.94	267.60	278.22	188.48	188.10
Jul	202.72	203.47	108.89	108.89	236.60	231.14	275.55	277.99	187.81	183.52
Aug	202.60	203.47	108.89	108.89	233.88	225.39	276.66	275.74	187.47	183.52
Sep	203.44	203.46	108.89	108.89	229.04	225.35	279.24	272.83	188.08	183.52
Oct	203.35	203.47	108.89	108.89	238.04	222.13	281.70	269.58	187.81	183.52
Nov	203.19	203.47	108.89	108.89	235.62	224.87	282.35	270.51	187.67	183.52
Dec	203.09		108.89		212.58		286.26		187.38	

	Labour wage rates		Equipment charge out rates		CPI (rescaled) 2006 Q1 = 100		Cement quantities ('000 tonnes)	
	2018	2019	2018	2019	2018	2019	2018	2019
Year	339.23		278.57		260.21		2217.07	
Q1	337.93	340.02	278.41	277.23	256.74	264.16	608.38	701.80
Q2	338.95	341.92	278.66	277.40	258.94	267.77	586.99	761.57
Q3	340.01	342.98	279.16	277.79	261.91	268.13	549.08	811.74
Q4	340.01		278.04		263.26		472.62	
Jan	336.96	340.02	278.41	277.23	256.32	263.32	217.11	237.95
Feb	338.42	340.02	278.41	277.23	256.34	264.00	195.45	203.02
Mar	338.42	340.02	278.41	277.23	257.56	265.18	195.82	260.83
Apr	338.42	340.02	278.41	277.23	258.26	267.23	196.12	240.89
May	338.42	342.77	278.41	277.23	259.50	268.18	208.97	273.15
Jun	340.01	342.98	279.16	277.73	259.06	267.91	181.91	247.53
Jul	340.01	342.98	279.16	277.73	258.68	266.82	205.69	263.97
Aug	340.01	342.98	279.16	277.73	262.44	267.90	168.75	279.55
Sep	340.01	342.98	279.16	277.89	264.62	269.68	174.64	268.22
Oct	340.01	342.98	279.16	277.89	263.68	270.19	163.98	260.71
Nov	340.01	342.98	277.71	277.89	263.29	271.07	151.81	251.04
Dec	340.02		277.23		262.80		156.83	

Source: Uganda Bureau of Statistics



Explanatory Notes on the Statistical Release

The data presented in this Statistical Release are indices designed to show price changes in each period. On page 1 there is a short commentary highlighting the main changes observed.

The graphs on page 1 are derived from Table A “Construction Sector Price Indices” on page 4 of the statistical release. The first graph shows the price changes for the whole sector for each month for the one year. The second graph shows the monthly average price indices in each month for the whole sector and the major sub-sectors.

The charts on page 6 above show the indices for the latest Six months for each basic heading. The Consumer Price Index (CPI, rescaled) and the quantity of cement for the domestic market are also shown. (Rescaling means multiplying or dividing the original series by a constant factor so as to compare with the current trends in say CPI)

If the bars in the charts are at almost the same level, then they indicate very little (if any) change in prices. An increase in the height of the bars indicates an increase in the prices while a reduction in the height implies a decline in prices.