



# **UGANDA BUREAU OF STATISTICS**



## **MONTHLY MERCHANDISE TRADE STATISTICS BULLETIN**

**March 2021**

**Release**

## Foreword



The Bulletin provides figures on the trade flows between Uganda and the rest of the world for the month of January 2021. Merchandise Trade Statistics is critical for monitoring the performance of the economy and the developments in the external sector in general. This publication will be useful to investors, international traders; policy and decision makers in informing their decisions.

It is important to note that, the statistics contained herein exclude informal cross border trade which was suspended in April 2020 due to the outbreak of COVID-19 that lead to the closure of borders. This affected small scale cross border trade and hence the Informal Cross border Trade surveys.

Your feedback on improving this monthly issue will be highly appreciated.

A handwritten signature in blue ink, appearing to read 'Aliziki K. Lubega', enclosed within a circular stamp.

Aliziki K. Lubega  
Director Macroeconomic Statistics

## Introduction

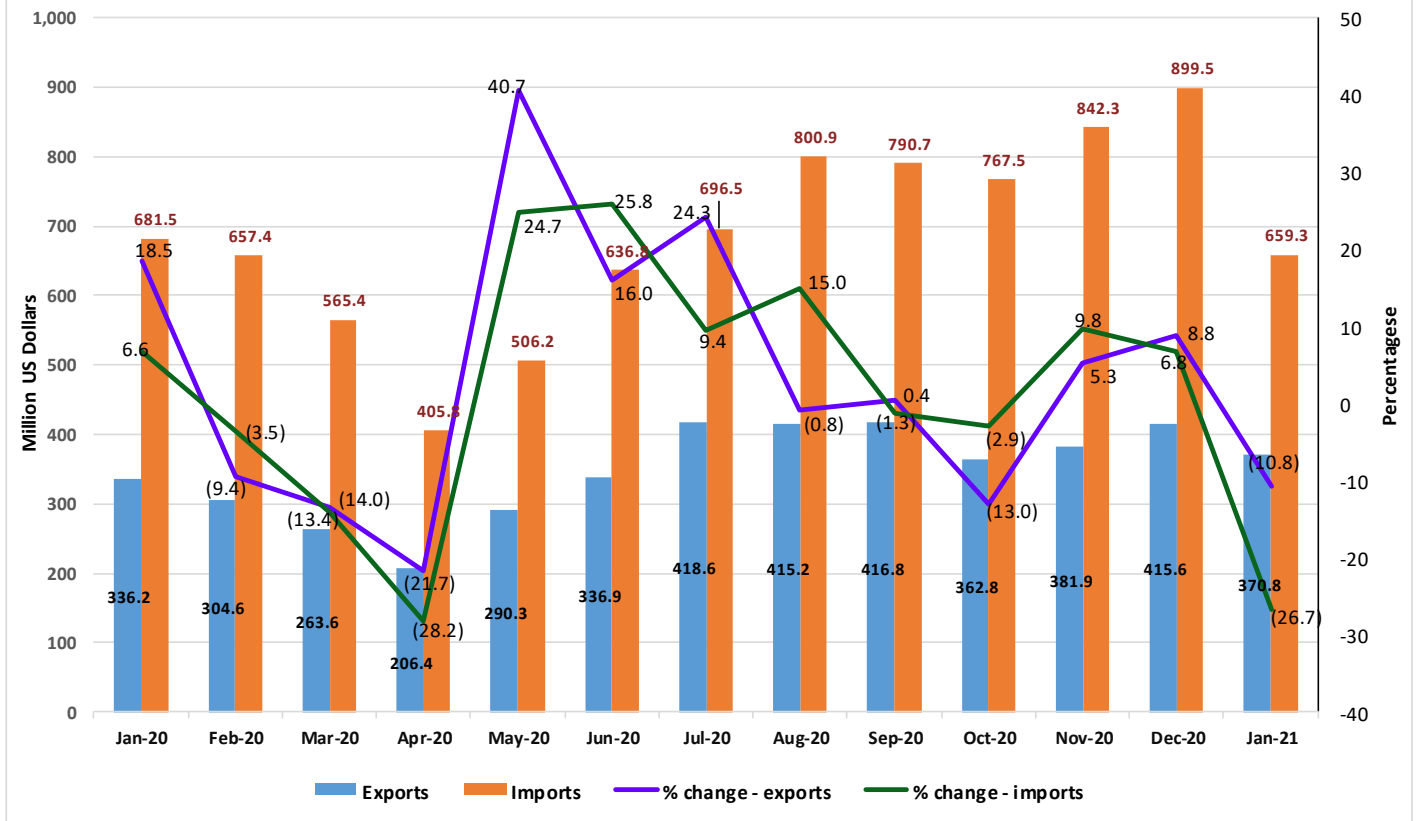
The bulletin presents International Merchandise trade statistics (exports and imports flows) between Uganda and the rest of the world as compiled from Customs and Non-Customs data sources. **International merchandise trade** statistics record all goods which add to, or subtract from, the stock of material resources of a country by entering (as imports) or leaving (as exports) its economic territory. The data compiled from customs and commodity authorities is herein referred to as Formal exports and imports.

The compilation of International Merchandise Trade Statistics is based on the General Trade System and coded according to Harmonized Commodity Description and Coding System 2017 (HS2017) and the Standard International Trade Classification (SITC Rev4) commodity nomenclatures as prescribed in the International Merchandise Trade Statistics manual 2010 (IMTS 2010).

In January 2021, total trade decreased by 21.7 percent to US\$ 1,030.1 million from US\$ 1,315.1 million recorded in December 2020. Total exports decreased by 10.8 percent in January 2021 to US\$ 370.8 million from \$ 415.6 million recorded in December 2020. Total imports decreased by 26.7 percent to US\$ 659.3 million in January 2021 from US\$ 899.5 million registered in December 2020.

Annually, trade flows in January 2021 increased by 1.2 percent from US\$ 1,017.7 million recorded in January 2020. Imports decreased by 3.3 percent in January 2021 compared to January 2020 while Exports increased by about 10.3 percent in January 2021 in comparison to January 2020, see Figure 1 and Table 1 below.

Figure 1: Exports and Imports from January 2020 to January 2021



The total imports bill decreased from US\$ 681.5 million in January 2020 to US\$ 659.3 million in January 2021.

The trade deficit decreased to US\$ 288.5 million in January 2021 compared to a deficit of US\$ 483.8 million recorded in December 2020, see Figure 1 above and Table 1 below.

**Table 1: Merchandise Trade Statistics flows in Million US\$ from January 2020 to January 2021**

Trade flow	Jan-20	Feb-20	Mar-20	Apr-20	May-20	Jun-20	Jul-20	Aug-20	Sep-20	Oct-20	Nov-20	Dec-20	Jan-21
<b>Exports</b>	336.2	304.6	263.6	206.4	290.3	336.9	418.6	415.2	416.8	362.8	381.9	415.6	370.8
<b>Imports</b>	681.5	657.4	565.4	405.8	506.2	636.8	696.5	800.9	790.7	767.5	842.3	899.5	659.3
<b>Total Trade</b>	<b>1,017.7</b>	<b>962.0</b>	<b>829.1</b>	<b>612.2</b>	<b>796.5</b>	<b>973.7</b>	<b>1,115.1</b>	<b>1,216.1</b>	<b>1,207.4</b>	<b>1,130.2</b>	<b>1,224.2</b>	<b>1,315.1</b>	<b>1,030.1</b>
Trade balance	(345.3)	(352.8)	(301.8)	(199.4)	(215.9)	(300.0)	(277.8)	(385.7)	(373.9)	(404.7)	(460.4)	(483.8)	(288.5)
% change - exports	18.5	(9.4)	(13.4)	(21.7)	40.7	16.0	24.3	(0.8)	0.4	(13.0)	5.3	8.8	(10.8)
% change - imports	6.6	(3.5)	(14.0)	(28.2)	24.7	25.8	9.4	15.0	(1.3)	(2.9)	9.8	6.8	(26.7)
% change - total trade	10.3	(5.5)	(13.8)	(26.2)	30.1	22.2	14.5	9.1	(0.7)	(6.4)	8.3	7.4	(21.7)

**Source: Uganda Bureau of Statistics**

### Performance of Formal Commodity Exports

Gold and Gold compounds continued to be the leading exported commodity contributing 46.9 percent to total exports in January 2021 compared to a 50.9 percent contribution registered in December 2020. However, it's earnings decreased to US\$ 173.9 million in January 2021 from US\$ 211.4 million receipted in December 2020.

Coffee came second generating revenues of US\$ 39.7 million which accounted for 10.7 percent of total exports in January 2021. This was higher than the December 2020 export earnings of US\$ 37.8 million.

Fish and fish products came third accounting for 2.8 percent of the total exports. Fish and fish products export earnings increased by 9.5 percent to US\$ 10.5 million in January 2021 from US\$ 9.6 million earned in December 2020.

Cocoa beans, Maize, Tea, Sugar & sugar confectionaries, Petroleum products, Animal/vegetable fats and oils, Cement, Iron and steel, Flowers and Tobacco commodities, were also among Uganda's leading exports, see Table 2 below.

**Table 2: Leading Export commodities by value in Million US\$ from January 2020 to January 2021**

Commodity	Jan-20	Feb-20	Mar-20	Apr-20	May-20	Jun-20	Jul-20	Aug-20	Sep-20	Oct-20	Nov-20	Dec-20	Jan-21
Gold & Gold Compounds	104.6	89.3	61.0	60.4	126.3	161.3	222.0	221.7	221.7	165.7	173.9	211.4	173.9
Coffee	48.2	46.7	45.9	36.9	42.5	40.0	50.0	46.1	44.6	38.6	38.3	37.8	39.7
Fish & Fish Products	13.8	11.0	11.3	6.6	9.6	10.4	8.6	8.6	10.4	12.3	12.8	9.6	10.5
Cocoa Beans	13.8	10.4	14.3	6.2	6.5	4.9	5.6	4.0	7.0	7.7	7.7	10.9	10.1
Maize	15.1	10.9	7.8	5.9	3.5	6.0	7.5	11.5	9.6	6.2	5.2	3.0	7.1
Tea	6.6	5.9	5.2	6.1	6.5	7.0	6.6	6.3	5.6	7.6	8.0	7.3	6.6
Sugar & Sugar Confectionary	6.5	10.1	8.3	6.4	11.4	7.4	5.4	3.8	4.0	4.4	3.4	3.9	9.2
Petroleum Products	11.2	11.0	7.9	2.1	2.7	4.1	3.5	3.8	4.6	6.8	7.3	7.6	6.5
Animal/Veg Fats & Oils	8.1	6.0	7.1	6.9	3.9	5.4	5.1	5.4	5.8	5.1	5.3	5.8	6.7
Cement	5.1	5.4	5.3	5.8	5.5	6.4	6.2	5.0	5.9	5.3	6.4	7.1	5.4
Iron and Steel	6.4	6.0	5.9	3.6	6.9	6.1	7.3	4.3	4.4	7.1	5.7	4.7	5.3
Flowers	4.4	5.3	3.2	3.8	4.2	6.0	5.8	5.1	4.5	4.1	3.4	4.0	4.5
Tobacco	3.4	4.2	3.9	3.2	2.4	2.6	4.5	3.7	3.6	4.0	5.6	8.7	7.7
Beans & Other Legumes	4.2	1.9	2.6	0.8	1.3	3.2	2.7	2.6	1.6	4.6	9.5	11.5	5.6
Sesame Seeds	4.8	6.2	5.5	2.6	1.0	0.9	0.8	1.7	3.5	1.9	2.2	4.5	4.0
Cotton	7.0	7.0	4.0	0.7	0.1	0.9	2.3	2.0	2.0	6.0	2.5	0.3	1.3
Plastic Products	3.2	2.8	3.2	1.2	1.8	2.5	2.7	2.8	2.4	2.5	2.8	2.5	2.4
Beer	2.0	1.7	1.8	1.3	1.7	1.9	2.0	2.0	1.7	2.3	2.6	3.4	2.2
Vegetables	1.5	2.0	2.3	1.3	2.2	2.6	2.3	2.0	1.8	2.0	1.8	2.0	1.7
Electric Current	1.6	1.5	1.6	1.3	1.4	1.7	2.0	2.0	2.0	1.7	1.5	1.7	2.2
Mineral Water	1.9	1.8	1.7	1.2	1.1	2.2	1.3	1.5	1.3	1.7	1.8	2.3	1.4
Other commodities	63.2	57.3	53.9	41.7	47.8	53.4	64.6	69.2	68.6	65.2	74.3	65.6	56.6
<b>Grand Total</b>	<b>336.2</b>	<b>304.6</b>	<b>263.6</b>	<b>206.4</b>	<b>290.3</b>	<b>336.9</b>	<b>418.6</b>	<b>415.2</b>	<b>416.8</b>	<b>362.8</b>	<b>381.9</b>	<b>415.6</b>	<b>370.8</b>

*Source: Uganda Bureau of Statistics*

## Formal Exports by Regions and Countries of destination

Middle East was the leading destination of Uganda's formal exports throughout the period under review followed by EAC, European Union, Other Africa, and Asia among others.

In January 2021, formal exports to Middle East declined slightly to US\$ 178.9 million accounting for 48.2 percent of formal exports compared to US\$ 217.6 million registered in December 2020. The leading country of destination was United Arab Emirates although its revenues decreased to US\$ 176.7 million representing 47.7 percent of total export earnings.

The East African Community (EAC) was the second with US\$ 82.0 million in January 2021 compared to US\$ 86.9 million revenue receipted in December 2020.

Within the EAC, the major countries of destination for the period under review were; Kenya and South Sudan fetching US\$ 43.7 million and US\$ 28.7 million respectively in January 2021 compared to US\$ 47.4 million and US\$ 28.7 million recorded in December 2020. Exports to Kenya however declined by 7.8 percent in January 2021 compared to December 2020.

Exports to other African countries decreased to US\$ 36.4 million in January 2021 compared to US\$ 42.2 million recorded in December 2020. D.R Congo and Sudan were the major countries of destination in the region with a combined market share of 7.3 percent in January 2021 compared to 8.3 percent registered in December 2020.

Exports to Europe increased to US\$ 48.3 million in January 2021 from US\$ 41.0 million recorded in December 2020. Most countries in this region performed well with the exports to Italy increasing to US\$ 12.7 million in January 2021 compared to US\$ 8.8 million registered in

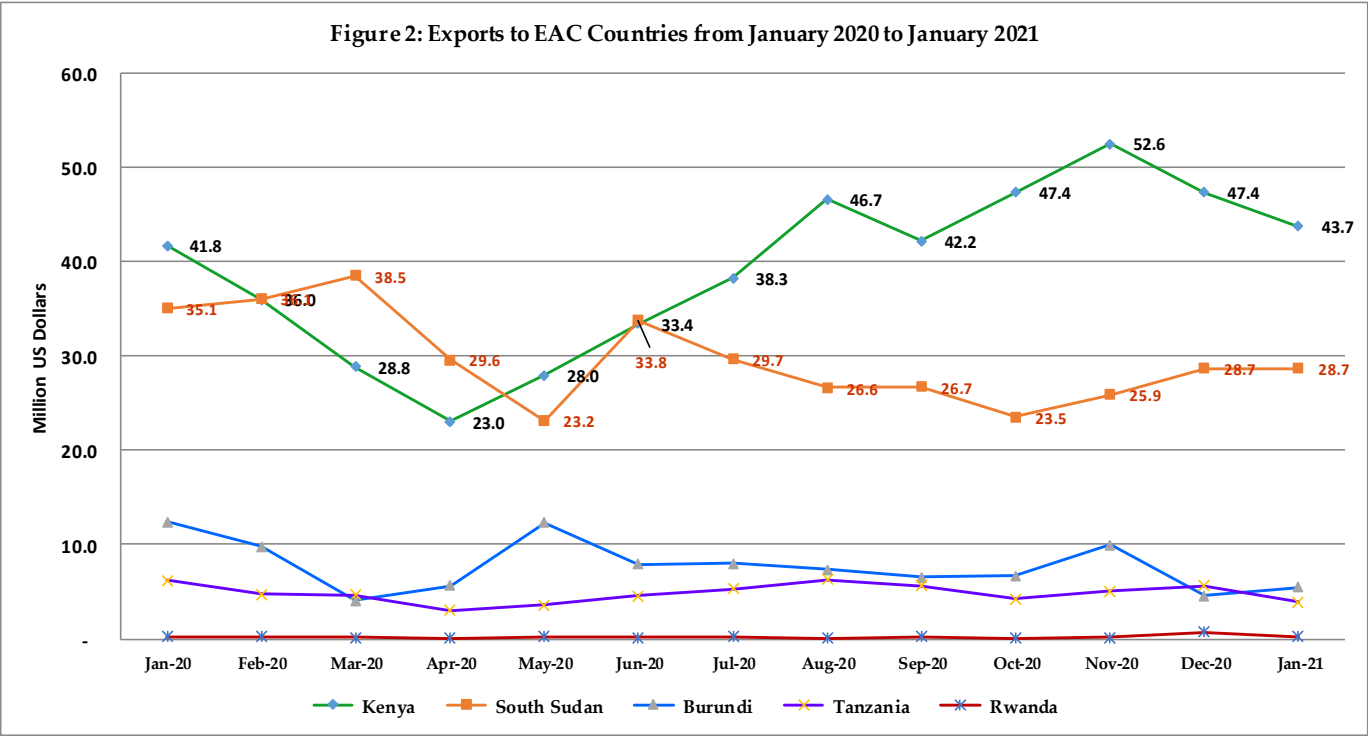
December 2020. Germany, Netherlands and Belgium were also among the leading countries of destination in the region for the period under review.

The Asian region had a share of 5.3 percent, resulting from revenues worth US\$ 19.8 million in January 2021. India, China and Hong Kong were among the leading destinations of Uganda’s exports.

Exports destined to North America/Caribbean were worth US\$ 4.9 million in January 2021. Specifically, these were destined to the United States and Canada, see Annex Table 6.

**Formal Exports to East African Community (EAC) Countries**

Kenya was the leading destination of Uganda’s exports among the East African Community (EAC) member states in January 2021 generating revenue of US\$ 43.7 million and accounting for 11.8 percent of total exports. This was however a 7.8 percent decline in the export earnings to Kenya in comparison to US\$ 47.4 million earned in December 2020. South Sudan followed, contributing 7.7 percent to Uganda’s exports in January 2021 in comparison to the contribution of 6.9 percent recorded in December 2020. Exports to Rwanda were the least due to closure of its busiest borders to Uganda namely, Katuna and Cyanika thus limiting trade activities, see Figure 2 below and Annex Table 6.



## Performance of Formal Commodity Imports

Gold, non-monetary (excl. gold ores and concentrates) continued being the main imported Commodity into the country though its import bill decreased to US\$ 154.8 million in January 2021 from US\$ 220.9 million recorded in December 2020. The proportion of Gold to total imports stood at 23.5 percent in January 2021 compared to 24.6 percent registered in December 2020.

Petroleum products (petrol, diesel, paraffin, aviation fuel and related materials) followed with its imports bill declined by 31.1 percent in January 2021 in comparison to December 2020. The imports bill was US\$ 78.0 million in January 2021 from US\$ 113.2 million recorded in December 2020. Petroleum products contributed 11.8 percent

to total imports bill during January 2021 in comparison to 12.6 percent recorded in December 2020.

Road vehicles (including air-cushion vehicles) came third but with a decrease in their import bill to US\$ 40.7 million in January 2021 from US\$ 62.9 million registered in December 2020.

Medical and pharmaceutical products, Iron and steel, Plastics in primary forms, cereals & cereal preparations, Fixed vegetable fats and oils, crude, refined or fractionated and Machinery specialized for particular industries amongst others were among the leading imported goods, see Table 3 below.

**Table 3: Imports by Leading Products in Million US\$ from January 2020 to January 2021**

Description at SITC2	Jan_20	Feb_20	Mar_20	Apr_20	May_20	Jun_20	Jul_20	Aug_20	Sep_20	Oct_20	Nov_20	Dec_20	Jan_21
Gold, non-monetary (excl. gold ores and concentrates)	100.9	95.1	63.2	38.6	141.4	167.1	226.5	221.0	197.3	196.3	173.5	220.9	154.8
Petroleum, petroleum products and related materials	111.8	103.8	91.5	52.2	44.0	72.1	62.5	82.1	73.5	77.2	66.8	113.2	78.0
Road vehicles (including air-cushion vehicles)	42.4	43.4	38.6	18.9	17.4	30.1	48.9	47.1	52.6	47.6	63.3	62.9	40.7
Medical and pharmaceutical products	22.5	27.1	15.3	25.2	27.5	24.4	30.4	31.5	41.6	30.3	38.7	44.8	24.8
Iron and steel	25.7	22.9	34.7	20.9	23.4	28.7	25.5	29.6	27.2	27.8	35.7	39.2	36.0
Plastics in primary forms	23.9	24.1	27.4	20.3	21.8	20.2	16.9	23.2	26.5	27.7	36.2	25.1	26.4
Cereals and cereal preparations	24.4	21.4	20.4	20.1	22.8	26.0	23.9	28.7	19.7	19.4	29.2	36.6	21.2
Fixed vegetable fats and oils, crude, refined or fractionated	22.5	26.4	20.6	24.3	20.7	19.9	12.4	22.5	30.7	22.3	34.3	17.7	25.0
Machinery specialized for particular industries	25.5	31.0	17.7	13.8	13.1	16.8	16.8	23.9	24.0	32.3	22.9	25.6	22.4
Chemical materials and products, nes	12.6	14.7	13.4	8.8	15.8	22.2	26.0	21.2	23.9	17.7	15.8	12.8	10.9
Electrical machinery, apparatus and appliances, nes	18.8	18.8	9.1	9.0	10.8	17.3	13.1	18.8	14.7	17.7	32.4	15.5	14.4
General industrial machinery and equipment, nes, machine parts, nes	16.4	15.1	15.0	8.3	7.5	10.5	11.2	17.4	17.4	13.4	25.8	17.0	14.5
Textile yarn, fabrics, made-up articles, nes, and related products	15.2	19.1	14.0	5.1	6.3	5.9	5.3	12.5	21.8	29.9	22.1	16.8	9.1
Telecommunications and sound recording/reproducing apparatus, etc	15.0	8.9	20.4	13.6	16.0	13.2	11.9	13.2	10.9	10.9	12.2	22.5	9.8

Non-metallic mineral manufactures, nes	10.6	10.4	12.4	13.4	8.9	9.0	13.3	11.0	12.5	13.6	13.5	20.2	16.3
Miscellaneous manufactured articles, nes	22.3	9.7	8.1	6.0	4.1	6.8	6.7	23.8	22.4	9.0	10.3	12.2	16.5
Other Commodities	171.0	165.4	143.7	107.2	104.7	146.5	145.2	173.4	173.9	174.3	209.7	196.3	138.4
<b>Grand Total</b>	<b>681.5</b>	<b>657.4</b>	<b>565.4</b>	<b>405.8</b>	<b>506.2</b>	<b>636.8</b>	<b>696.5</b>	<b>800.9</b>	<b>790.7</b>	<b>767.5</b>	<b>842.3</b>	<b>899.5</b>	<b>659.3</b>

**Source: Uganda Bureau of Statistics**

## Formal Imports by Regions and Countries of Origin

The Asian region was the main source of Uganda's merchandise imports. However, the region's import bill decreased to US\$ 243.9 million in January 2021 from US\$ 349.0 million recorded in December 2020. China and India were the leading countries of origin for Uganda's imports in the region. These both recorded a decline in expenses to US\$ 96.5 million and US\$ 59.5 million respectively in January 2021 from US\$ 147.5 million and US\$ 99.2 million recorded in December 2020.

The East African Community (EAC) ranked the second accounting for 24.8 percent of the imports bill in January 2021. Expenses to the region declined to US\$ 163.4 million in January 2021 from US\$ 196.2 million recorded in December 2020.

South Africa and Gambia were the leading sources of imports from Other Africa region whose import bills were US\$ 22.3 million and US\$ 28.8 million respectively in January 2021 compared to US\$ 46.2 million and US\$ 15.0 million recorded in December 2020.

Netherlands was the main origin of imports from European Union region with expenses worth US\$ 12.7 million in January 2021 in comparison to US\$ 66.9 million registered in December 2020. The sharp fall in the imports bill to Netherland was due to decreased importation of fuel from the country in the month of January 2021 of 81.1 percent.

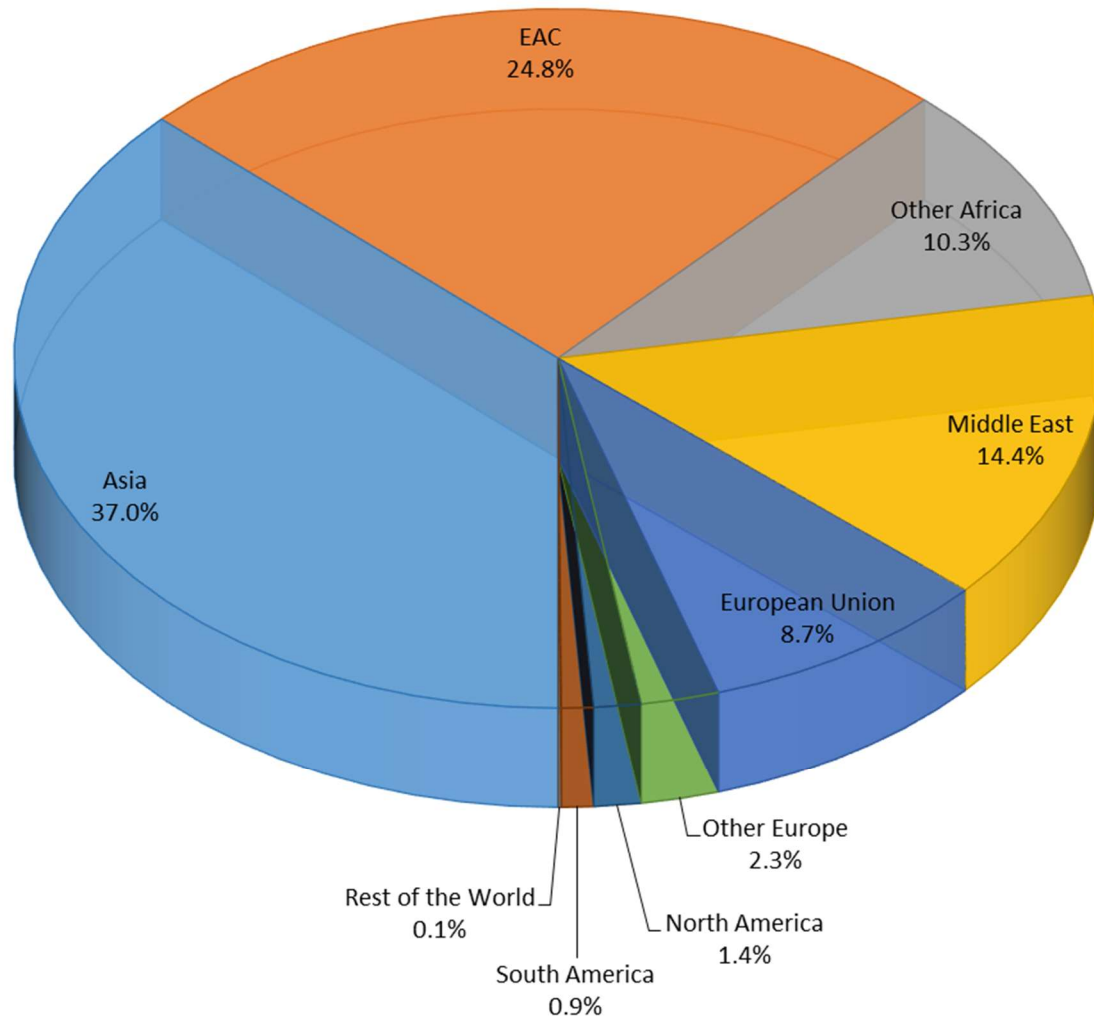
Imports from Middle East increased to US\$ 95.1 million contributing 14.4 percent to total imports in January 2021. United Arab Emirates was the main contributing country within this region with imports worth US\$ 72.9 million accounting for 11.1 percent of total imports in January 2021 compared to 5.3 percent registered in December 2020.

United States was the leading country of origin in the North American region whose contribution declined to US\$ 5.3 million in January 2021 from US\$ 14.0 million recorded in December 2020, see Figure 3 and Annex Table 8.

Notably, 86.6 percent of Uganda's imports originated from the regions of Asia, East African Community (EAC), Other Africa and Middle East in January 2021 as seen in Figure 3 below.



**Figure 3: Imports by Region and percentage share, January 2021**

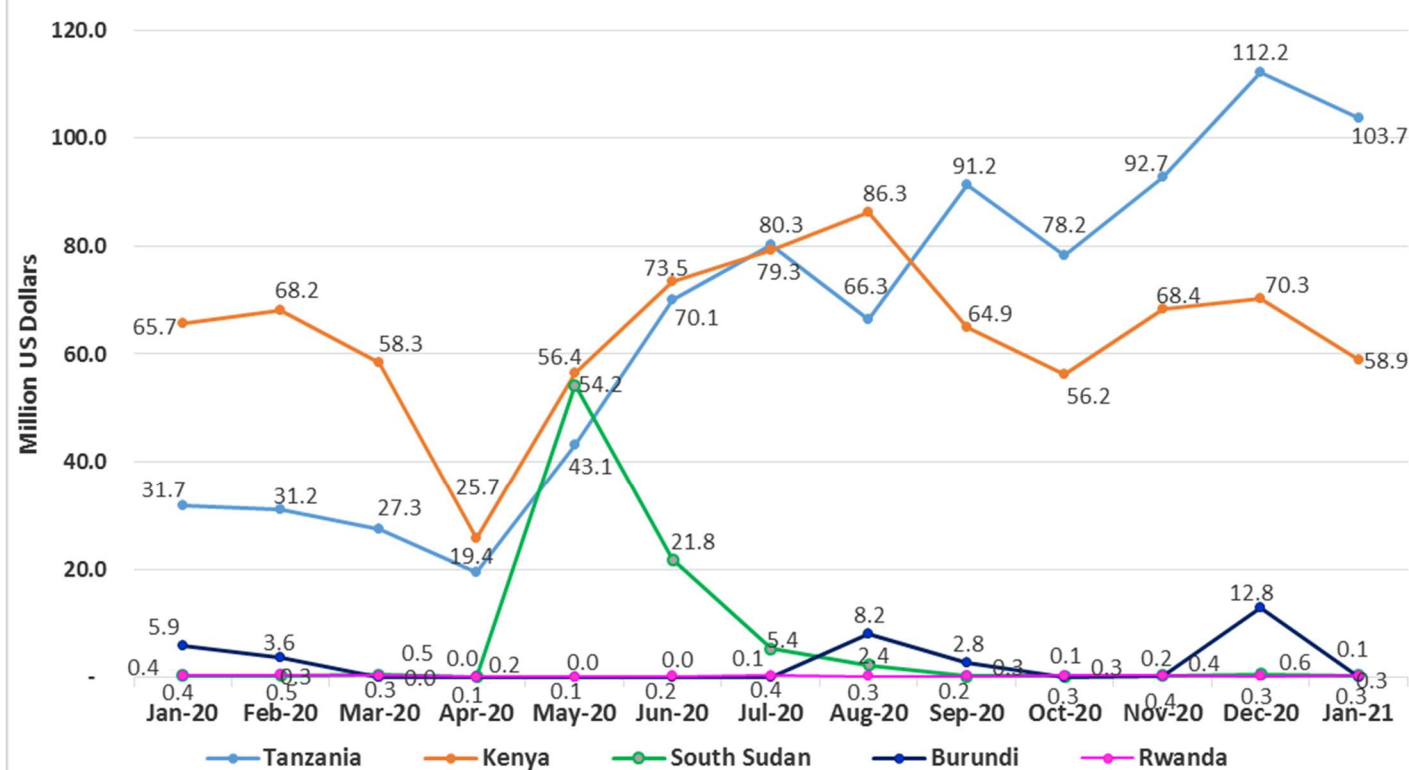


### **Formal Imports from East African Community (EAC) Countries**

In January 2021, Tanzania and Kenya were the major source of Uganda's Imports in the EAC member Countries although their import bills decreased to US\$ 103.7 million and US\$ 58.9 million from US\$ 112.2 million and US\$ 70.3

million recorded in December 2020 respectively. Burundi was the least country of origin of Uganda's Imports, see Figure 4 below and Annex Table 8.

Figure 4: Imports from EAC Countries from January 2020 to January 2021



### Exports by border station

Entebbe Airport, Malaba, Busia, Elegu, Mutukula and Mpondwe were the major border stations through which exports worth US\$ 348.6 million exited the country to different destinations in January 2021 accounting for 94.0 percent share of total exports while exports worth US\$ 389.1 million exited through the same borders in December 2020 representing 93.6 percent of total exports, see Annex Table 7.

### Imports by border station

Malaba, Entebbe Airport, Elegu and Mutukula were the main entry border stations accounting for US\$ 657.6 million of Uganda's imports in January 2021 representing 99.7 percent of imports getting into the country compared to US\$ 896.8 million registered in December 2020, see Annex Table 9.

# ANNEX

**Table 4: Monthly Exports by Commodity& Value in Million US\$ from January 2020 to January 2021**

Description	Jan_20	Feb_20	Mar_20	Apr_20	May_20	Jun_20	Jul_20	Aug_20	Sep_20	Oct_20	Nov_20	Dec_20	Jan_21
<b>Traditional Exports</b>													
Coffee	48.2	46.7	45.9	36.9	42.5	40.0	50.0	46.1	44.6	38.6	38.3	37.8	39.7
Cotton	7.0	7.0	4.0	0.7	0.1	0.9	2.3	2.0	2.0	6.0	2.5	0.3	1.3
Tea	6.6	5.9	5.2	6.1	6.5	7.0	6.6	6.3	5.6	7.6	8.0	7.3	6.6
Tobacco	3.4	4.2	3.9	3.2	2.4	2.6	4.5	3.7	3.6	4.0	5.6	8.7	7.7
<b>Non Traditional Exports</b>													
Live Animals	0.6	0.1	0.1	1.0	0.6	0.9	1.1	1.1	1.3	0.9	1.0	1.6	1.4
Fish and Fish Products	13.8	11.0	11.3	6.6	9.6	10.4	8.6	8.6	10.4	12.3	12.8	9.6	10.5
Flowers	4.4	5.3	3.2	3.8	4.2	6.0	5.8	5.1	4.5	4.1	3.4	4.0	4.5
Beans and Other Legumes	4.2	1.9	2.6	0.8	1.3	3.2	2.7	2.6	1.6	4.6	9.5	11.5	5.6
Bananas	0.2	0.4	0.2	0.1	0.2	0.4	0.4	0.5	0.2	0.3	0.2	0.2	0.2
Fruits	0.7	1.3	1.1	0.7	1.3	1.5	1.7	1.3	0.8	0.9	1.1	0.9	0.6
Pepper	0.1	0.2	0.1	0.2	0.1	0.1	0.2	0.2	0.1	0.2	0.3	0.4	0.5
Maize	15.1	10.9	7.8	5.9	3.5	6.0	7.5	11.5	9.6	6.2	5.2	3.0	7.1
Ground Nuts	0.1	0.1	0.1	0.0	0.1	0.1	0.1	0.2	0.1	0.1	0.1	0.3	0.0
Sesame Seeds	4.8	6.2	5.5	2.6	1.0	0.9	0.8	1.7	3.5	1.9	2.2	4.5	4.0
Cocoa Beans	13.8	10.4	14.3	6.2	6.5	4.9	5.6	4.0	7.0	7.7	7.7	10.9	10.1
Electric Current	1.6	1.5	1.6	1.3	1.4	1.7	2.0	2.0	2.0	1.7	1.5	1.7	2.2
Soap	1.5	1.7	1.5	2.2	1.3	1.5	1.2	1.1	1.3	0.8	1.4	1.1	1.1
Hides and Skins	1.1	1.0	0.8	0.4	0.4	0.4	0.9	0.8	0.9	0.6	0.5	1.1	0.5
Gold and Gold Compounds	104.6	89.3	61.0	60.4	126.3	161.3	222.0	221.7	221.7	165.7	173.9	211.4	173.9
Hoes and Hand Tools	0.0	0.1	0.0	0.0	0.0	0.0	0.0	0.0	0.0	0.1	0.1	0.0	0.0
Petroleum Products	11.2	11.0	7.9	2.1	2.7	4.1	3.5	3.8	4.6	6.8	7.3	7.6	6.5
Other Precious Metals	0.0	0.0	0.0	0.0	-	0.0	0.0	0.0	0.0	0.0	0.0	0.0	0.0
Vanilla	0.0	-	-	0.1	1.3	0.3	0.1	0.2	0.4	0.3	0.2	0.0	0.2
Soya Beans	0.7	2.0	2.4	0.8	0.9	0.6	1.0	1.1	0.7	1.5	0.8	1.1	0.5
Sorghum	3.8	2.3	1.1	0.4	0.6	0.2	1.0	0.2	2.0	0.2	0.2	0.2	0.2
Plastic Products	3.2	2.8	3.2	1.2	1.8	2.5	2.7	2.8	2.4	2.5	2.8	2.5	2.4
Animal/Veg Fats & Oils	8.1	6.0	7.1	6.9	3.9	5.4	5.1	5.4	5.8	5.1	5.3	5.8	6.7
Sugar and Sugar Confectionary	6.5	10.1	8.3	6.4	11.4	7.4	5.4	3.8	4.0	4.4	3.4	3.9	9.2
Iron and Steel	6.4	6.0	5.9	3.6	6.9	6.1	7.3	4.3	4.4	7.1	5.7	4.7	5.3
Cement	5.1	5.4	5.3	5.8	5.5	6.4	6.2	5.0	5.9	5.3	6.4	7.1	5.4
Beer	2.0	1.7	1.8	1.3	1.7	1.9	2.0	2.0	1.7	2.3	2.6	3.4	2.2
Telephones for Cellular	0.0	-	0.0	-	0.0	0.0	0.1	0.0	0.1	0.0	0.1	0.1	0.0
Rice	1.5	1.2	1.5	1.4	1.1	1.2	1.6	2.5	1.9	1.4	1.0	2.2	1.0
Mineral Water	1.9	1.8	1.7	1.2	1.1	2.2	1.3	1.5	1.3	1.7	1.8	2.3	1.4
Vegetables	1.5	2.0	2.3	1.3	2.2	2.6	2.3	2.0	1.8	2.0	1.8	2.0	1.7
Other nes	52.8	46.7	44.9	34.4	39.8	46.1	55.2	60.0	58.8	57.8	67.5	56.4	50.3
<b>Traditional Exports</b>	<b>65</b>	<b>64</b>	<b>59</b>	<b>47</b>	<b>52</b>	<b>51</b>	<b>63</b>	<b>58</b>	<b>56</b>	<b>56</b>	<b>54</b>	<b>54</b>	<b>55</b>
<b>Non Traditional Exports</b>	<b>271</b>	<b>241</b>	<b>205</b>	<b>159</b>	<b>239</b>	<b>286</b>	<b>355</b>	<b>357</b>	<b>361</b>	<b>307</b>	<b>328</b>	<b>362</b>	<b>315</b>
<b>Grand Total</b>	<b>336.2</b>	<b>304.6</b>	<b>263.6</b>	<b>206.4</b>	<b>290.3</b>	<b>336.9</b>	<b>418.6</b>	<b>415.2</b>	<b>416.8</b>	<b>362.8</b>	<b>381.9</b>	<b>415.6</b>	<b>370.8</b>

Source: Uganda Bureau of Statistics

**Table 5: Monthly Exports by Commodity & Quantity from January 2020 to January 2021**

Commodity	Units	Jan_20	Feb_20	Mar_20	Apr_20	May_20	Jun_20	Jul_20	Aug_20	Sep_20	Oct_20	Nov_20	Dec_20	Jan_21
<b>Traditional Exports</b>														
Coffee	Tonnes	28,197	29,705	28,654	21,598	26,256	25,222	32,595	31,181	30,388	25,687	25,819	25,375	26,794
Cotton	Tonnes	4,874	4,802	2,843	498	96	755	1,634	1,478	1,483	4,679	1,838	201	895
Tea	Tonnes	6,219	5,543	4,894	5,937	6,164	6,541	6,053	5,596	5,096	6,805	7,101	6,617	5,805
Tobacco	Tonnes	905	1,260	1,233	1,085	905	1,009	1,423	1,252	1,225	1,178	1,500	2,245	1,536
<b>Non Traditional Exports</b>														
Live Animals	000 Nos.	122	154	125	466	343	391	581	488	213	307	319	437	529
Fish and Fish Products	Tonnes	2,064	1,641	1,232	1,069	1,337	1,981	1,436	1,278	1,373	1,603	1,461	1,575	1,426
Flowers	Tonnes	500	621	373	478	487	696	632	572	548	523	445	536	525
Beans and Other Legumes	Tonnes	7,242	4,304	3,334	1,698	2,231	8,149	7,350	5,394	3,347	9,096	22,348	22,715	11,128
Bananas	Tonnes	466	670	594	347	554	629	648	670	457	494	264	519	409
Fruits	Tonnes	2,070	3,385	2,362	1,861	3,298	3,369	3,449	3,399	2,143	2,284	2,369	2,140	1,646
Pepper	Tonnes	14	43	38	43	20	22	47	75	15	42	45	80	103
Maize	Tonnes	42,486	32,995	21,973	15,494	13,780	26,807	31,842	42,168	36,975	25,058	20,037	12,901	27,256
Ground Nuts	Tonnes	101	146	72	22	106	111	151	345	210	113	152	565	10
Sesame Seeds	Tonnes	3,703	5,052	4,369	2,226	597	571	540	1,403	2,930	1,502	1,826	4,451	3,410
Cocoa Beans	Tonnes	5,609	4,093	5,922	2,516	2,744	2,106	2,529	1,795	3,078	3,215	3,200	4,474	4,098
Electric Current	000 Kwh.	17,636	16,779	17,065	14,838	16,078	18,517	21,014	21,910	21,545	20,004	17,618	19,211	24,303
Soap	Tonnes	2,689	3,162	2,676	3,674	2,210	2,666	2,221	1,693	2,304	1,391	2,476	2,105	1,989
Hides and Skins	Tonnes	974	892	772	249	176	226	612	504	579	410	473	716	510
Gold and Gold Compounds	Kgs.	2,097	1,965	1,202	1,185	2,514	3,022	4,059	4,249	3,800	2,836	2,982	3,763	3,357
Hoes and Hand Tools	000 Nos.	17	86	17	5	2	9	14	2	10	66	37	3	27
Petroleum Products	000 Litres	10,549	10,375	7,469	1,987	2,696	3,925	3,363	3,614	4,259	6,428	6,890	7,381	6,519
Other Precious Metals	Kgs.	2	8	3	1	-	1	7	7	3	2	1	1	2
Vanilla	Tonnes	0	-	-	0	4	3	0	2	2	2	1	0	2
Soya Beans	Tonnes	1,124	2,656	3,875	1,308	1,282	1,336	1,977	2,567	1,303	2,699	1,769	1,912	812
Sorghum	Tonnes	7,087	4,129	2,714	972	1,475	434	2,115	537	2,182	409	628	444	307
Plastic Products	Tonnes	1,874	1,779	2,027	870	1,148	1,682	2,183	2,505	2,220	2,187	2,167	2,018	1,619
Animal/Veg Fats & Oils	Tonnes	8,180	5,783	6,300	6,464	3,660	4,939	4,652	5,016	5,804	4,668	5,305	5,373	5,688
Sugar & Sugar Confectionary	Tonnes	11,456	17,591	14,995	11,987	22,694	14,503	9,909	6,976	7,231	7,970	6,155	7,055	15,659
Iron and Steel	Tonnes	7,553	6,633	6,870	4,180	6,990	6,636	8,029	4,522	4,792	7,201	5,755	5,883	5,663
Cement	Tonnes	36,104	40,544	38,623	44,189	42,144	51,493	47,040	39,116	45,035	40,539	48,240	52,728	43,810
Beer	000 Litres	2,332	2,460	2,078	1,705	1,713	2,188	2,556	2,319	1,888	2,477	2,712	3,349	2,438
Telephones for Cellular	Tonnes	0	-	0	-	0	0	0	0	0	0	1	0	0
Rice	Tonnes	3,213	2,467	3,165	2,774	2,081	2,265	2,940	4,617	3,701	2,811	2,007	4,161	2,009
Mineral Water	000 Litres	3,939	3,780	3,861	2,799	2,299	5,062	2,683	3,006	2,785	3,947	4,131	5,085	3,170
Vegetables	Tonnes	2,715	2,336	3,341	2,715	3,673	4,617	3,475	2,792	2,358	2,268	2,147	2,210	1,757
Other nes	0	70,413	66,058	59,294	53,496	61,245	64,452	62,347	75,786	74,837	62,690	62,528	56,203	46,688

*Source: Uganda Bureau of Statistics*

**Table 6: Monthly Exports by Region, Country of Destination and Value in Million US\$ from January 2020 to January 2021**

Region/Country	Jan-20	Feb-20	Mar-20	Apr-20	May-20	Jun-20	Jul-20	Aug-20	Sep-20	Oct-20	Nov-20	Dec-20	Jan-21
<b>Middle East</b>	<b>112.2</b>	<b>94.5</b>	<b>66.6</b>	<b>61.9</b>	<b>129.0</b>	<b>164.9</b>	<b>225.6</b>	<b>225.6</b>	<b>224.7</b>	<b>169.4</b>	<b>177.8</b>	<b>217.6</b>	<b>178.9</b>
United Arab Emirates	108.6	92.6	64.0	61.1	127.6	162.9	223.5	223.4	222.9	167.2	175.6	215.3	176.7
Israel	1.9	0.7	1.0	0.7	0.9	1.1	1.1	1.2	0.7	0.8	0.4	1.3	0.9
Qatar	0.5	0.6	0.5	0.1	0.3	0.5	0.5	0.3	0.4	0.8	0.8	0.1	0.6
Saudi Arabia	0.4	0.2	0.4	-	0.1	0.2	0.4	0.5	0.3	0.4	0.5	0.4	0.5
Other Countries	0.9	0.5	0.7	0.1	0.0	0.2	0.1	0.3	0.4	0.2	0.5	0.4	0.2
<b>East African Community</b>	<b>95.7</b>	<b>86.8</b>	<b>76.2</b>	<b>61.3</b>	<b>67.2</b>	<b>79.8</b>	<b>81.4</b>	<b>87.0</b>	<b>81.2</b>	<b>81.9</b>	<b>93.6</b>	<b>86.9</b>	<b>82.0</b>
Kenya	41.8	36.0	28.8	23.0	28.0	33.4	38.3	46.7	42.2	47.4	52.6	47.4	43.7
South Sudan	35.1	36.1	38.5	29.6	23.2	33.8	29.7	26.6	26.7	23.5	25.9	28.7	28.7
Tanzania	12.4	9.8	4.1	5.6	12.3	7.9	7.9	7.4	6.5	6.7	9.9	4.5	5.4
Burundi	6.2	4.7	4.7	3.0	3.5	4.5	5.3	6.3	5.6	4.2	5.1	5.6	3.9
Rwanda	0.2	0.2	0.1	0.0	0.2	0.1	0.2	0.1	0.2	0.1	0.2	0.7	0.2
<b>Other Africa</b>	<b>36.6</b>	<b>33.3</b>	<b>32.2</b>	<b>26.7</b>	<b>31.3</b>	<b>30.3</b>	<b>42.8</b>	<b>43.8</b>	<b>41.7</b>	<b>39.1</b>	<b>39.5</b>	<b>42.2</b>	<b>36.4</b>
D.R.Congo	23.3	20.1	19.7	17.8	19.0	20.2	24.5	22.8	25.3	23.1	23.3	28.1	22.2
Sudan	7.0	6.4	6.5	5.6	6.8	6.6	12.0	11.8	9.3	5.4	6.1	6.4	4.8
Morocco	1.5	0.8	0.9	0.5	1.0	0.6	2.1	2.0	2.4	2.4	1.7	2.0	1.8
Ethiopia	1.4	1.7	2.1	0.4	0.8	1.1	0.8	1.4	0.8	1.6	1.8	1.3	2.0
Other Countries	3.4	4.3	3.0	2.3	3.8	1.7	3.4	5.8	3.9	6.7	6.6	4.4	5.7
<b>European Union</b>	<b>51.9</b>	<b>50.8</b>	<b>42.8</b>	<b>32.6</b>	<b>35.1</b>	<b>37.9</b>	<b>41.0</b>	<b>38.8</b>	<b>41.3</b>	<b>39.9</b>	<b>37.2</b>	<b>38.1</b>	<b>42.3</b>
Italy	13.4	13.6	11.7	7.2	8.8	11.7	12.2	14.4	11.4	12.9	11.9	8.8	12.7
Germany	11.7	8.6	8.8	8.0	7.6	6.2	7.1	6.9	9.3	5.4	6.7	7.8	6.4
Netherlands	10.4	9.1	5.3	4.8	5.5	6.9	6.6	5.5	5.6	6.5	5.6	6.2	6.7
Belgium	7.2	7.3	5.7	4.3	5.2	5.3	5.8	5.2	6.5	6.9	5.8	7.4	9.2
Other Countries	6.1	6.3	4.8	5.3	4.1	5.2	4.4	3.4	4.5	4.0	4.6	4.5	4.0
<b>Other Europe</b>	<b>4.2</b>	<b>6.8</b>	<b>4.3</b>	<b>2.5</b>	<b>1.7</b>	<b>3.5</b>	<b>3.6</b>	<b>3.0</b>	<b>3.3</b>	<b>4.7</b>	<b>3.5</b>	<b>2.9</b>	<b>6.0</b>
Turkey	2.2	3.1	2.2	1.4	0.9	1.6	1.8	0.9	1.6	2.0	1.5	0.5	3.1
United Kingdom	1.2	2.0	0.9	0.4	0.2	0.9	1.0	1.3	1.0	1.0	0.6	0.9	0.7
Switzerland	0.6	1.5	1.1	0.5	0.6	0.8	0.6	0.6	0.5	1.2	0.6	1.2	2.1
Other Countries	0.2	0.2	0.1	0.1	0.0	0.3	0.2	0.2	0.1	0.5	0.8	0.2	0.1
<b>Asia</b>	<b>29.2</b>	<b>25.4</b>	<b>34.5</b>	<b>15.2</b>	<b>18.7</b>	<b>13.8</b>	<b>16.6</b>	<b>12.3</b>	<b>20.4</b>	<b>23.8</b>	<b>25.9</b>	<b>24.0</b>	<b>19.8</b>
India	4.9	5.0	8.9	4.2	5.5	2.6	2.2	2.2	4.6	5.7	6.9	4.3	3.1
China	4.7	4.2	4.2	2.2	2.1	1.4	2.4	2.2	3.8	3.2	4.3	5.0	4.4
Hong Kong	2.8	2.3	3.1	1.6	3.0	1.8	2.5	2.9	4.4	4.4	5.0	3.0	3.7
Indonesia	6.9	5.5	6.9	2.8	3.2	2.9	3.1	0.8	1.8	0.4	1.1	3.6	1.1
Malaysia	1.4	1.6	4.3	1.3	2.0	1.0	1.3	0.2	1.5	2.3	3.2	3.7	2.8
Other Countries	8.4	6.9	7.1	3.1	2.8	4.1	5.0	4.0	4.3	7.8	5.4	4.5	4.7
<b>North America</b>	<b>5.7</b>	<b>6.5</b>	<b>6.8</b>	<b>5.7</b>	<b>6.9</b>	<b>6.3</b>	<b>7.1</b>	<b>4.2</b>	<b>3.8</b>	<b>3.6</b>	<b>4.2</b>	<b>3.7</b>	<b>4.9</b>
United States	5.2	6.1	6.5	4.9	6.5	4.8	6.0	4.1	3.7	3.0	4.0	3.6	4.6
Canada	0.3	0.2	0.3	0.4	0.2	0.4	0.6	0.2	0.2	0.6	0.2	0.1	0.3
Other Countries	0.2	0.2	0.0	0.4	0.2	1.1	0.6	-	-	0.1	-	0.0	0.0
<b>South America</b>	<b>0.0</b>	<b>0.0</b>	<b>0.0</b>	<b>0.1</b>	<b>0.0</b>	<b>0.0</b>	<b>0.0</b>	<b>0.0</b>	<b>-</b>	<b>-</b>	<b>-</b>	<b>0.0</b>	<b>0.0</b>
<b>Rest Of The World</b>	<b>0.8</b>	<b>0.4</b>	<b>0.2</b>	<b>0.5</b>	<b>0.4</b>	<b>0.4</b>	<b>0.5</b>	<b>0.4</b>	<b>0.4</b>	<b>0.4</b>	<b>0.2</b>	<b>0.2</b>	<b>0.6</b>
<b>Grand Total</b>	<b>336.2</b>	<b>304.6</b>	<b>263.6</b>	<b>206.4</b>	<b>290.3</b>	<b>336.9</b>	<b>418.6</b>	<b>415.2</b>	<b>416.8</b>	<b>362.8</b>	<b>381.9</b>	<b>415.6</b>	<b>370.8</b>

Source: Uganda Bureau of Statistics

**Table 7: Monthly Exports by Border Stations and Value in Million US\$ from January 2020 to January 2021**

STATIONS	Jan_20	Feb_20	Mar_20	Apr_20	May_20	Jun_20	Jul_20	Aug_20	Sep_20	Oct_20	Nov_20	Dec_20	Jan_21
Entebbe Cargo	133.0	115.8	83.7	72.0	143.8	179.5	239.9	241.5	241.8	191.6	201.3	233.2	197.2
Malaba	100.3	99.6	98.8	67.8	71.2	70.0	87.0	82.9	83.6	85.9	87.6	90.3	87.8
Elegu	31.0	31.2	34.2	26.8	20.1	29.6	25.4	22.5	22.8	20.8	21.6	24.3	23.7
Busia	25.4	18.3	13.9	9.8	15.6	20.0	23.5	26.7	25.1	25.5	27.2	24.6	24.2
Mutukula	13.3	10.8	5.5	7.6	14.5	10.1	10.0	10.3	10.6	10.4	13.2	8.0	7.2
Mpondwe	6.7	5.4	5.7	6.1	6.7	7.0	6.7	6.1	6.2	7.3	7.9	8.6	8.5
Oraba	3.5	3.7	3.5	2.8	3.1	3.4	4.0	4.2	3.9	2.7	3.7	3.9	4.4
Ntoroko	3.3	3.5	3.0	3.1	3.9	3.8	3.8	4.3	3.4	3.7	2.4	4.0	2.7
Katuna	4.6	3.2	3.0	1.7	2.8	3.0	3.9	4.1	3.9	2.6	3.5	3.4	3.2
Padea	2.5	2.7	2.2	1.0	1.5	2.3	2.9	3.6	6.2	4.1	3.7	3.4	2.9
Mirama Hills	4.4	3.4	3.0	0.6	1.2	2.2	3.7	3.3	2.9	2.9	3.7	4.4	2.9
Bunagana	2.6	1.7	2.2	2.8	2.2	2.5	2.6	2.3	3.3	2.0	2.5	3.0	1.7
Vurra	2.6	1.9	2.3	2.4	2.2	1.5	2.9	1.6	1.6	1.2	2.6	2.3	1.9
Goli	1.7	1.8	1.8	1.0	0.6	0.9	1.1	0.5	0.4	0.7	0.6	0.7	1.4
Ishasha	0.4	0.4	0.1	0.6	0.3	0.1	0.8	0.9	0.7	1.0	0.3	0.8	0.1
Lwakhakha	0.0	0.0	0.0	0.1	0.3	0.2	0.3	0.4	0.4	0.3	0.1	0.3	0.3
Madi Opei	0.4	1.0	0.4	0.1	0.0	0.4	0.0	-	0.0	-	-	0.0	-
Cyanika	0.3	0.2	0.2	0.0	0.2	0.0	0.1	0.1	0.1	0.1	0.0	0.0	0.3
Suam River	0.2	0.1	0.1	0.1	0.0	0.1	0.0	-	0.0	0.1	0.1	0.0	0.3
Busunga	-	-	-	0.0	0.1	-	0.0	-	-	-	0.0	0.3	0.1
Portbell	0.0	-	-	-	-	0.2	0.2	-	-	-	-	-	-
Paidha	-	-	-	-	-	-	-	-	-	-	-	-	0.0
Kikagati	-	0.0	-	-	-	-	-	0.0	0.0	0.0	-	0.0	0.0
<b>Grand Total</b>	<b>336.2</b>	<b>304.6</b>	<b>263.6</b>	<b>206.4</b>	<b>290.3</b>	<b>336.9</b>	<b>418.6</b>	<b>415.2</b>	<b>416.8</b>	<b>362.8</b>	<b>381.9</b>	<b>415.6</b>	<b>370.8</b>

Source: Uganda Bureau of Statistics

**Table 8: Monthly Imports by Region, Country of Origin & Value in Million US\$ from January 2020 to January 2021**

Region/Countries	Jan-20	Feb-20	Mar-20	Apr-20	May-20	Jun-20	Jul-20	Aug-20	Sep-20	Oct-20	Nov-20	Dec-20	Jan-21
<b>Asia</b>	<b>281.4</b>	<b>294.2</b>	<b>257.9</b>	<b>185.3</b>	<b>177.1</b>	<b>257.4</b>	<b>248.6</b>	<b>286.8</b>	<b>319.6</b>	<b>305.5</b>	<b>376.4</b>	<b>349.0</b>	<b>243.9</b>
China	132.0	106.1	84.9	67.9	85.1	95.9	101.2	117.0	131.1	128.0	155.3	147.5	96.5
India	72.8	99.2	91.5	54.8	32.6	81.3	74.9	74.6	84.7	83.7	109.9	99.2	59.5
Japan	31.9	31.7	25.9	13.3	15.7	28.0	32.5	29.9	32.8	28.5	33.4	39.2	23.2
Indonesia	19.9	23.2	18.2	19.6	17.0	10.6	5.8	13.7	16.1	8.3	26.8	11.9	16.5
Malaysia	7.3	13.6	8.1	11.5	8.2	12.5	10.0	9.9	17.5	15.2	10.0	10.5	10.8
Russian Federation	2.2	2.0	2.8	2.3	3.1	8.9	5.6	11.9	9.0	9.5	9.1	12.3	10.4
Other Countries	15.3	18.3	26.6	16.0	15.4	20.1	18.5	29.7	28.4	32.5	31.9	28.4	27.1
<b>East African Community</b>	<b>104.0</b>	<b>103.8</b>	<b>86.5</b>	<b>45.4</b>	<b>153.9</b>	<b>165.7</b>	<b>165.4</b>	<b>163.4</b>	<b>159.5</b>	<b>135.1</b>	<b>162.1</b>	<b>196.2</b>	<b>163.4</b>
Tanzania	31.7	31.2	27.3	19.4	43.1	70.1	80.3	66.3	91.2	78.2	92.7	112.2	103.7
Kenya	65.7	68.2	58.3	25.7	56.4	73.5	79.3	86.3	64.9	56.2	68.4	70.3	58.9
South Sudan	0.4	0.3	0.5	0.2	54.2	21.8	5.4	2.4	0.3	0.3	0.4	0.6	0.3
Burundi	5.9	3.6	0.0	0.0	0.0	0.0	0.1	8.2	2.8	0.1	0.2	12.8	0.1
Rwanda	0.4	0.5	0.3	0.1	0.1	0.2	0.4	0.3	0.2	0.3	0.4	0.3	0.3
<b>Other Africa</b>	<b>78.7</b>	<b>75.6</b>	<b>68.7</b>	<b>49.7</b>	<b>48.5</b>	<b>88.9</b>	<b>136.0</b>	<b>157.8</b>	<b>128.5</b>	<b>151.0</b>	<b>114.6</b>	<b>141.0</b>	<b>68.2</b>
South Africa	26.2	16.1	16.2	12.1	6.8	8.6	11.8	16.8	16.6	10.4	33.1	46.2	22.3
Gambia	18.5	3.9	19.7	4.7	12.1	24.9	17.4	37.3	11.3	23.5	24.4	15.0	28.8
Other Countries	34.0	55.6	32.8	32.9	29.5	55.5	106.7	103.6	100.5	117.1	57.1	79.8	17.1
<b>Middle East</b>	<b>131.7</b>	<b>80.0</b>	<b>78.9</b>	<b>59.5</b>	<b>53.5</b>	<b>51.6</b>	<b>44.5</b>	<b>59.6</b>	<b>85.0</b>	<b>87.3</b>	<b>70.3</b>	<b>69.3</b>	<b>95.1</b>
United Arab Emirate	78.4	49.2	46.0	36.9	30.4	33.1	18.7	23.3	42.1	45.9	44.3	47.6	72.9
Saudi Arabia	46.1	23.2	23.7	18.7	18.4	14.1	13.3	27.8	36.7	23.6	17.8	11.1	12.6
Oman	5.6	4.8	7.5	1.9	1.6	1.8	1.6	2.2	2.8	11.4	4.5	6.3	4.7
Other Countries	1.6	2.8	1.7	2.0	3.2	2.6	10.8	6.4	3.5	6.4	3.7	4.3	4.9
<b>European Union</b>	<b>45.0</b>	<b>64.2</b>	<b>36.7</b>	<b>29.6</b>	<b>47.3</b>	<b>41.2</b>	<b>66.6</b>	<b>84.0</b>	<b>53.5</b>	<b>53.6</b>	<b>82.0</b>	<b>105.5</b>	<b>57.3</b>
Netherlands	5.6	14.2	5.7	3.6	4.6	5.3	24.7	30.4	16.1	8.1	15.2	66.9	12.7
Germany	9.6	13.3	10.0	9.5	7.2	11.8	13.0	16.5	13.7	13.6	16.8	7.2	9.6
Italy	7.4	7.1	4.4	4.9	2.7	2.9	2.8	4.9	6.9	4.0	9.5	6.1	5.2
Belgium	2.5	6.1	2.7	1.4	3.2	3.6	3.6	5.0	3.7	12.8	5.4	2.8	13.5
Other Countries	19.9	23.5	13.9	10.2	29.4	17.5	22.6	27.2	13.2	15.1	35.1	22.6	16.3
<b>Other Europe</b>	<b>14.8</b>	<b>14.5</b>	<b>13.0</b>	<b>8.5</b>	<b>8.9</b>	<b>14.6</b>	<b>14.7</b>	<b>26.0</b>	<b>25.4</b>	<b>15.2</b>	<b>18.9</b>	<b>17.3</b>	<b>15.3</b>
United Kingdom	6.0	6.9	5.2	4.6	4.2	5.7	5.0	7.1	7.0	8.7	8.4	7.7	7.1
Turkey	4.4	4.2	3.8	2.4	2.9	3.2	3.8	5.8	5.6	3.9	6.1	5.0	6.3
Other Countries	4.3	3.4	4.0	1.5	1.8	5.7	5.9	13.2	12.8	2.6	4.5	4.5	1.8
<b>North America</b>	<b>18.0</b>	<b>12.7</b>	<b>12.2</b>	<b>17.6</b>	<b>9.4</b>	<b>13.5</b>	<b>16.4</b>	<b>16.7</b>	<b>14.7</b>	<b>16.4</b>	<b>14.8</b>	<b>16.8</b>	<b>9.2</b>
United States	14.1	10.0	9.7	16.7	8.0	9.8	13.9	10.9	13.2	11.7	11.2	14.0	5.3
Canada	1.8	2.6	2.4	0.8	0.6	3.3	2.5	1.6	1.4	4.6	3.2	2.6	2.2
Other Countries	2.2	0.1	0.2	0.1	0.8	0.4	0.0	4.2	0.1	0.1	0.5	0.2	1.8
<b>South America</b>	<b>7.7</b>	<b>10.3</b>	<b>10.4</b>	<b>9.6</b>	<b>7.3</b>	<b>3.8</b>	<b>3.6</b>	<b>5.2</b>	<b>3.3</b>	<b>2.0</b>	<b>2.4</b>	<b>3.5</b>	<b>6.2</b>
Argentina	5.5	8.9	8.9	8.7	5.2	2.7	1.9	0.9	0.3	0.2	0.0	1.6	3.9
Brazil	1.2	1.3	1.1	0.8	1.8	1.0	1.6	1.6	2.2	1.7	2.3	1.6	2.0
Other Countries	0.9	0.2	0.4	0.2	0.3	0.1	0.2	2.7	0.7	0.1	0.1	0.3	0.4
<b>Rest of the World</b>	<b>0.4</b>	<b>2.2</b>	<b>1.0</b>	<b>0.6</b>	<b>0.3</b>	<b>0.2</b>	<b>0.7</b>	<b>1.4</b>	<b>1.2</b>	<b>1.4</b>	<b>0.7</b>	<b>1.0</b>	<b>0.7</b>
<b>Grand Total</b>	<b>681.5</b>	<b>657.4</b>	<b>565.4</b>	<b>405.8</b>	<b>506.2</b>	<b>636.8</b>	<b>696.5</b>	<b>800.9</b>	<b>790.7</b>	<b>767.5</b>	<b>842.3</b>	<b>899.5</b>	<b>659.3</b>

Source: Uganda Bureau of Statistics

**Table 9: Monthly Imports by Border Station and Value in Million US\$ from January 2020 to January 2021**

STATIONS	Jan_20	Feb_20	Mar_20	Apr_20	May_20	Jun_20	Jul_20	Aug_20	Sep_20	Oct_20	Nov_20	Dec_20	Jan_21
Malaba	364.5	343.2	307.2	229.2	207.9	287.4	271.7	380.4	388.5	378.0	429.9	412.0	299.9
Entebbe Airport	150.5	151.0	107.8	81.2	194.9	221.8	284.0	271.8	260.4	249.7	232.7	278.9	204.3
Busia	149.3	148.1	128.9	81.3	82.4	100.3	123.0	108.2	100.3	113.8	149.9	160.4	140.7
Mutukula	8.0	12.9	19.5	11.3	19.2	25.4	15.2	24.2	38.2	23.6	27.5	45.5	12.7
Portbell	6.4	0.0	-	0.0	-	-	0.0	13.8	-	-	0.0	-	0.0
Elegu	0.4	0.4	0.5	0.2	0.4	0.5	0.6	0.5	0.4	0.5	0.4	0.7	0.1
Katuna	0.2	0.5	0.3	0.3	0.3	0.5	0.4	0.5	0.4	0.4	0.5	0.6	0.6
Lwakhakha	0.0	0.1	0.1	0.2	0.3	0.3	0.4	0.4	0.5	0.4	0.3	0.3	0.2
Mirama Hill	0.4	0.3	0.2	0.1	0.1	0.1	0.3	0.2	0.2	0.6	0.2	0.2	0.1
Mpondwe	0.1	0.3	0.1	0.6	0.2	0.1	0.2	0.3	0.2	0.2	0.1	0.2	0.4
Vurra	0.3	0.1	0.1	0.1	0.1	0.1	0.1	0.2	1.0	0.1	0.1	0.4	0.1
Busunga	0.9	0.0	0.0	0.9	0.0	0.0	0.0	0.0	0.0	0.0	0.0	0.0	0.0
Goli	0.1	0.1	0.1	0.1	0.1	0.0	0.1	0.1	0.4	0.1	0.4	0.0	0.0
Padea	0.2	0.2	0.2	0.1	0.1	0.2	0.2	0.1	0.1	0.1	0.0	0.0	0.0
Madi Opei	0.0	0.1	0.0	0.0	0.0	0.0	0.0	0.0	0.0	0.0	0.0	0.2	-
Kikagati	0.0	0.1	0.0	0.0	0.0	0.0	0.0	0.0	0.0	0.0	0.0	0.0	0.0
Bunagana	0.0	0.0	0.0	0.1	0.0	-	0.0	0.0	0.1	0.0	0.1	-	0.0
Ntoroko	0.0	0.0	0.0	0.0	0.0	0.0	0.0	0.0	0.0	0.0	0.1	0.0	0.0
Oraba	0.0	0.0	0.0	0.0	0.0	0.0	0.0	0.0	0.0	0.0	0.0	0.0	0.0
Cyanika	-	0.0	0.0	0.0	0.1	0.0	0.0	0.0	0.0	-	0.0	-	0.0
Bugango	-	0.0	0.0	0.0	0.0	0.0	0.0	0.0	0.0	0.0	0.0	0.0	0.0
Ishasha River	0.0	-	-	0.0	0.0	0.0	0.0	0.0	0.0	0.0	0.0	0.0	0.0
Suam River	0.0	0.0	0.0	0.0	0.0	0.0	0.0	0.0	0.0	0.0	0.0	0.0	0.0
<b>Grand Total</b>	681.5	657.4	565.4	405.8	506.2	636.8	696.5	800.9	790.7	767.5	842.3	899.5	659.3

Source: Uganda Bureau of Statistics