



MANYA E SSAZA LYO

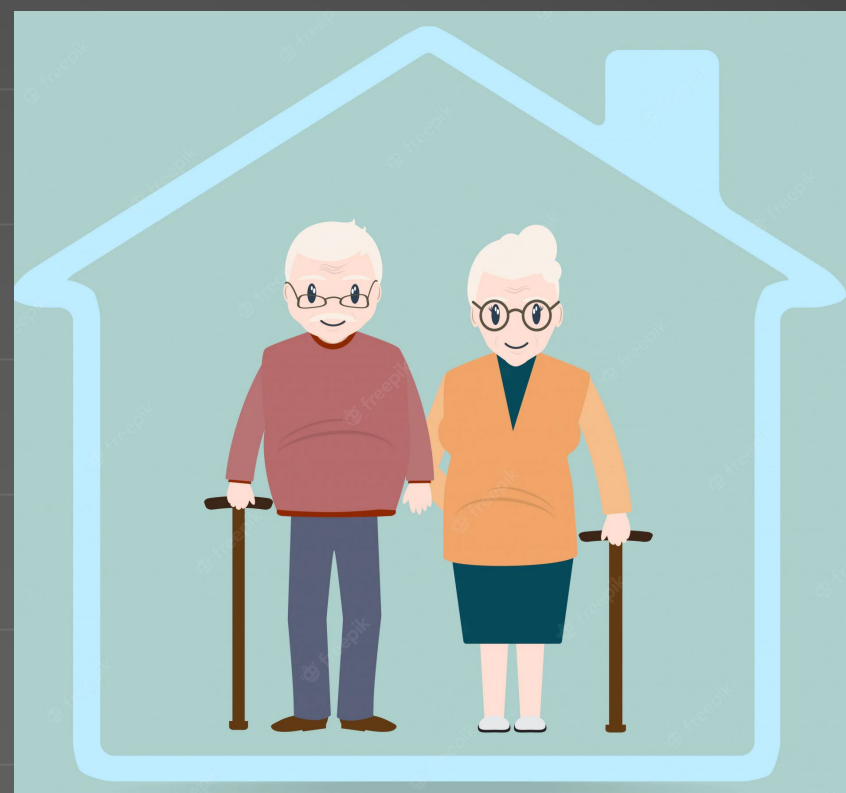
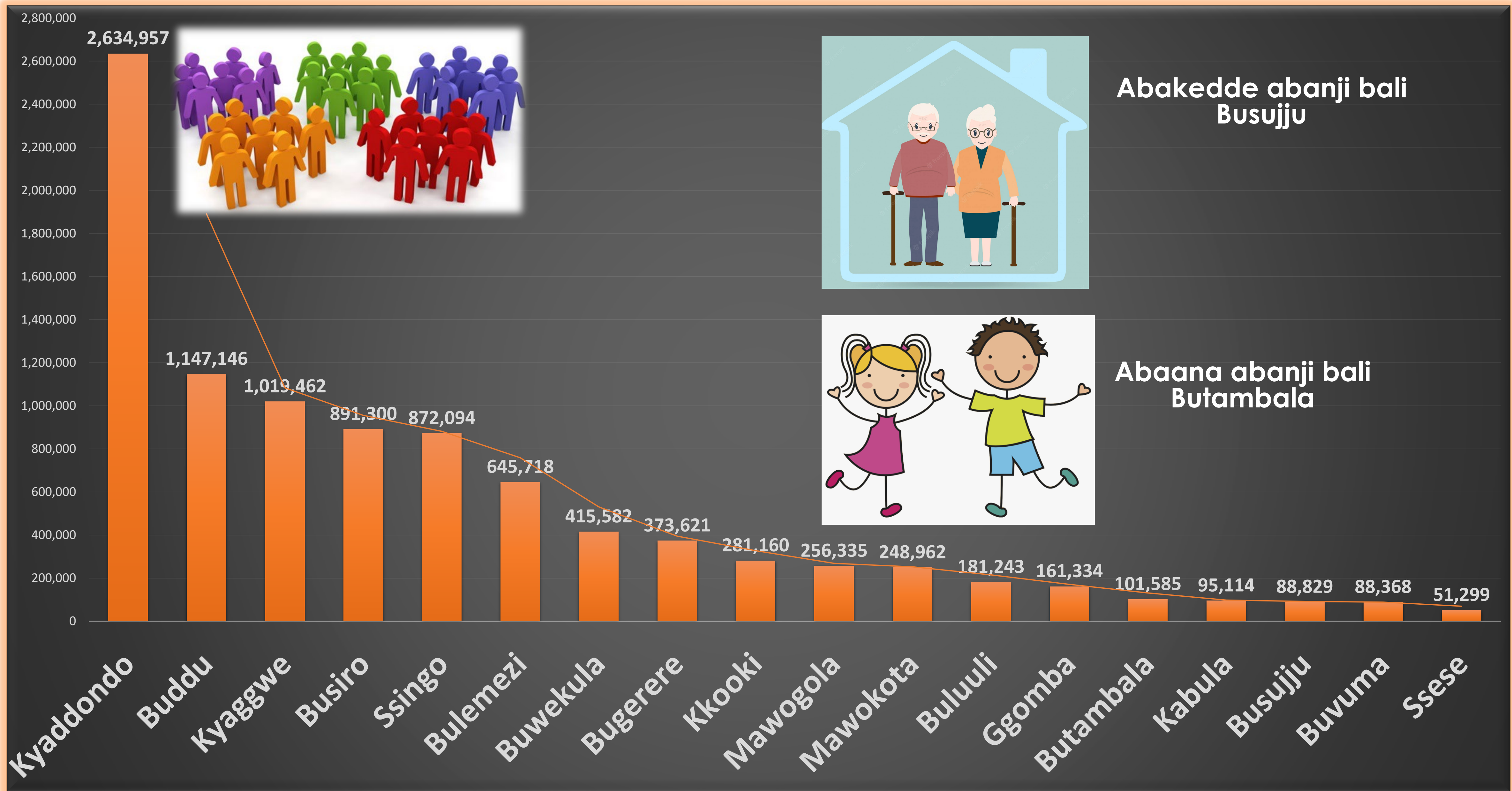
ENYANJULA

- ❑ Enteekateeka yonna ennunamu ate nga ya mugaso erina okwesigamizibwa ku bibalo oba emiwendo.
- ❑ Otukutiira bulijjo okunyikiza enkozesa y'ebibalo okusobola okuvunuka ebyo ebitusomooza.
- ❑ Awo nno Manya Essaza lyo kye kimu kubikolo abakulembeze mu bwaKabaka bye balina okwekwaata mukawefube w'okuza Buganda ku Ntikko.

Bisunsuddwa aba;



OBUNJI BW'ABANTU



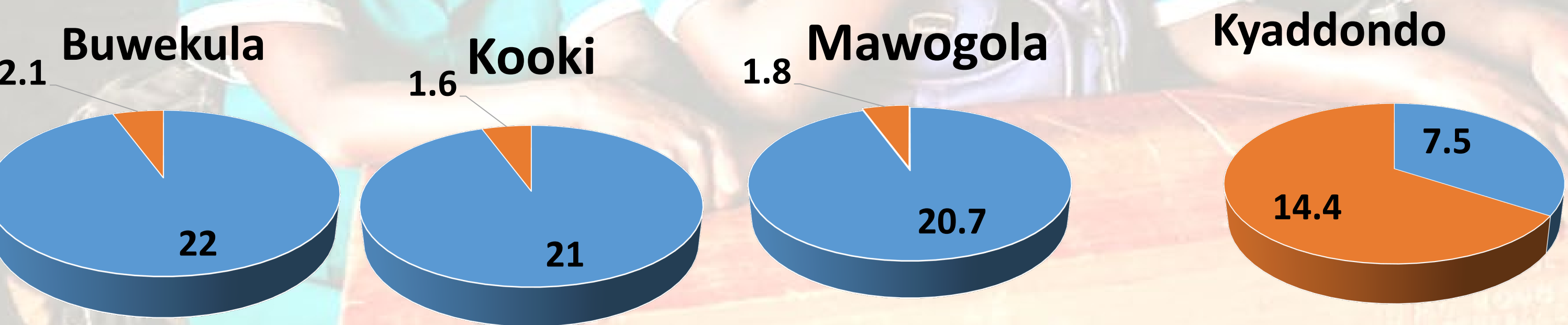
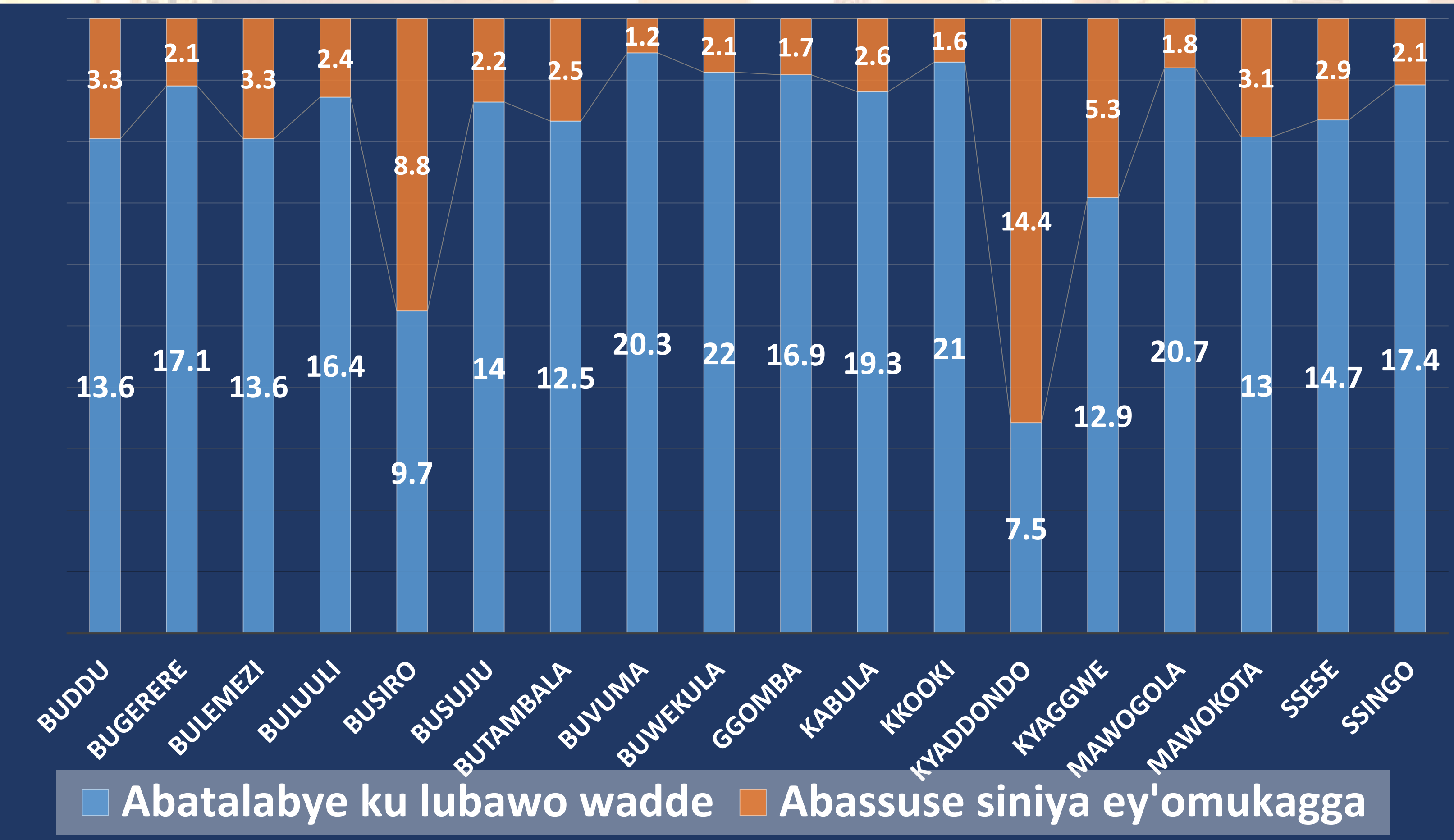
Abakedde abanji bali Busujju



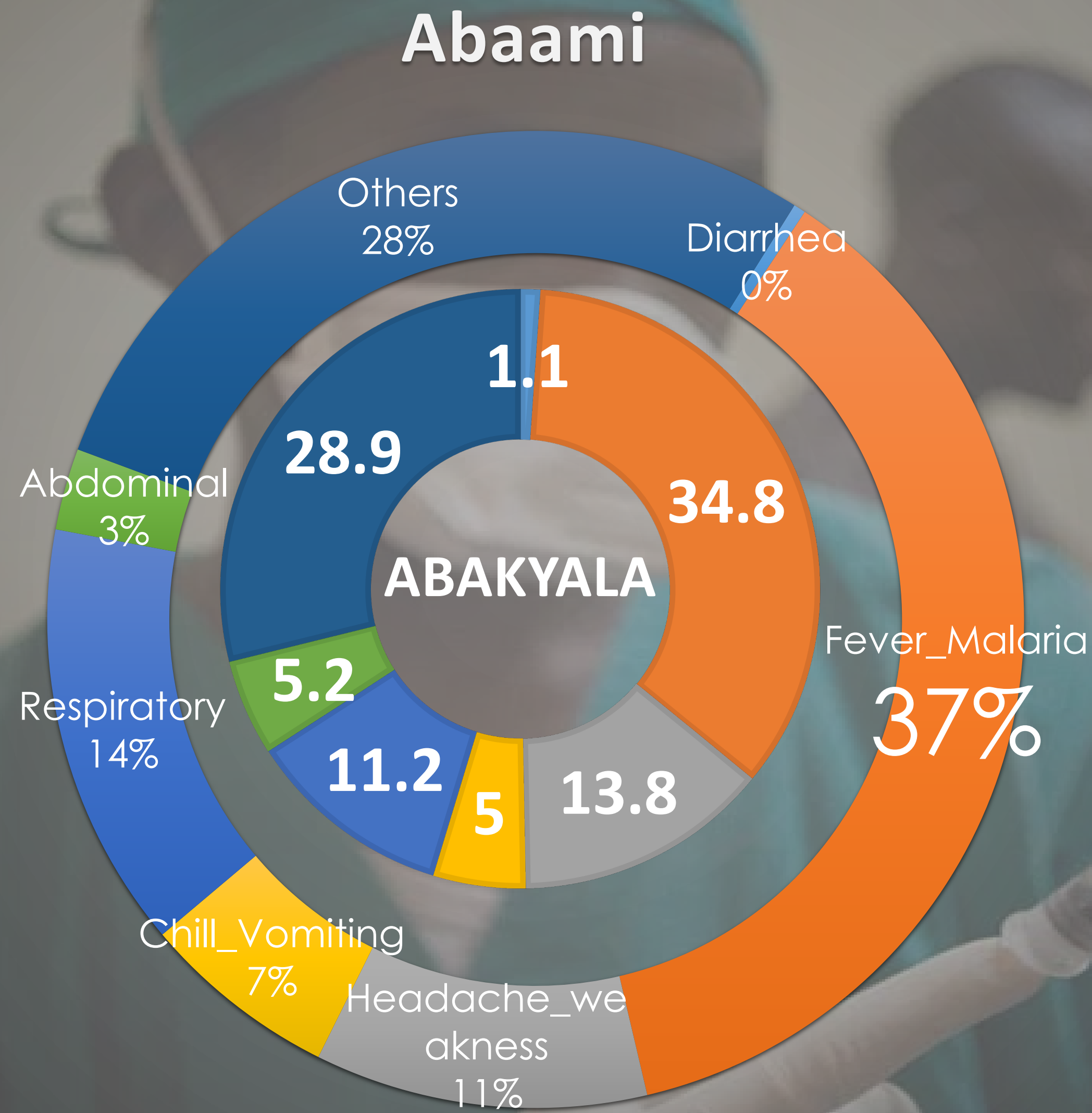
Abaana abanji bali Butambala

EBYENJIGIRIZA

(Abasinga okusoma baana abalenzi)



EBY'OBULAMU N'OBUYONJO



Buvuma ne Buluuli bakyali bubi mu kabuyonjo

EBY'OBULIMI



Eby'okulima

(Kooki)



Eby'obulunzi

(Ssesse)



■ Average

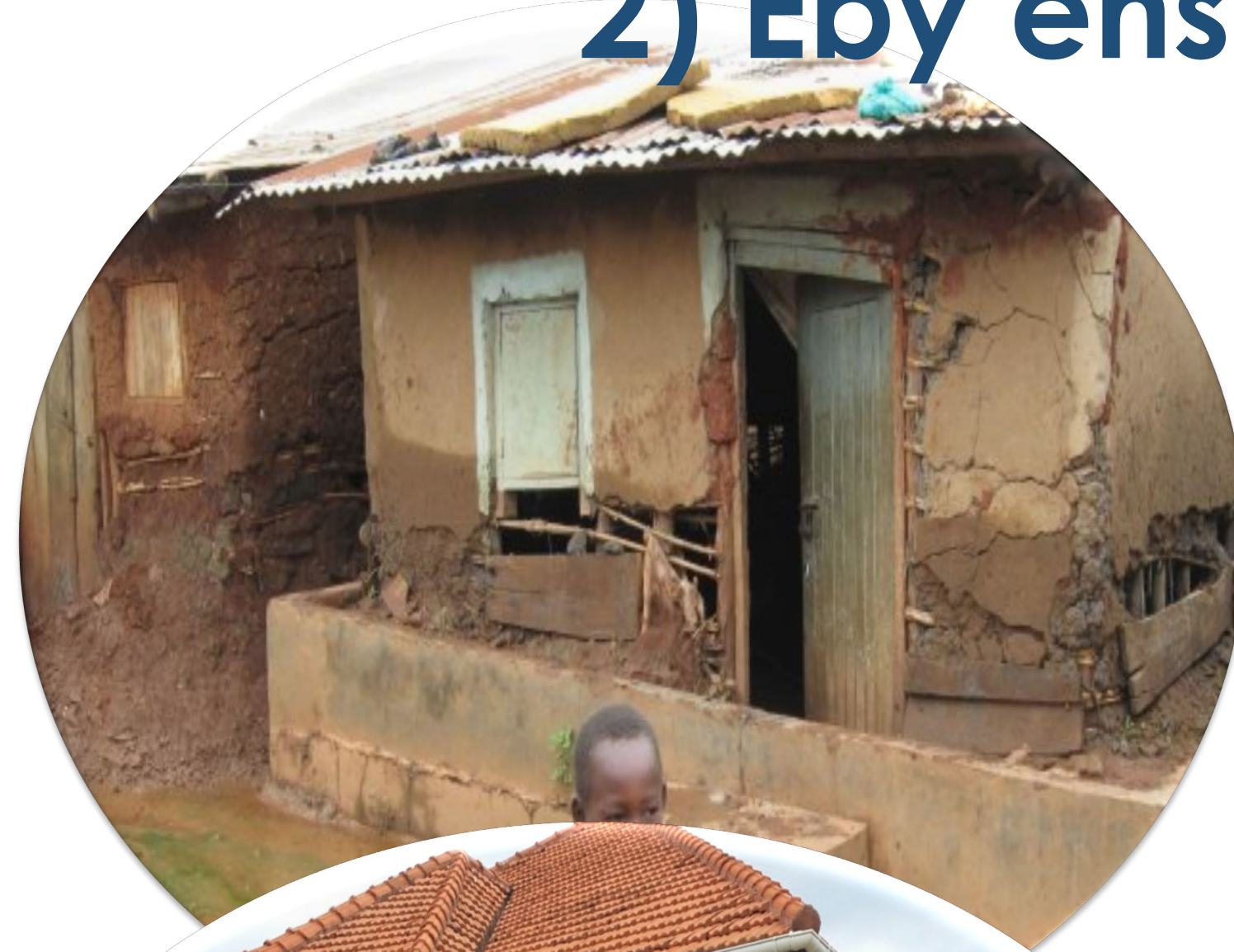
	Beans	Maize	Cassava	Banana	Sweet potato	Coffee	Ground nuts	Irish	Rice	Cotton	Cocoa	Other
Average	81	79.7	78.6	75.8	70.8	43.3	25.2	10.7	1.8	0.7	0.3	0.3

EBIBALO EBIRALA

1) Obwaavu

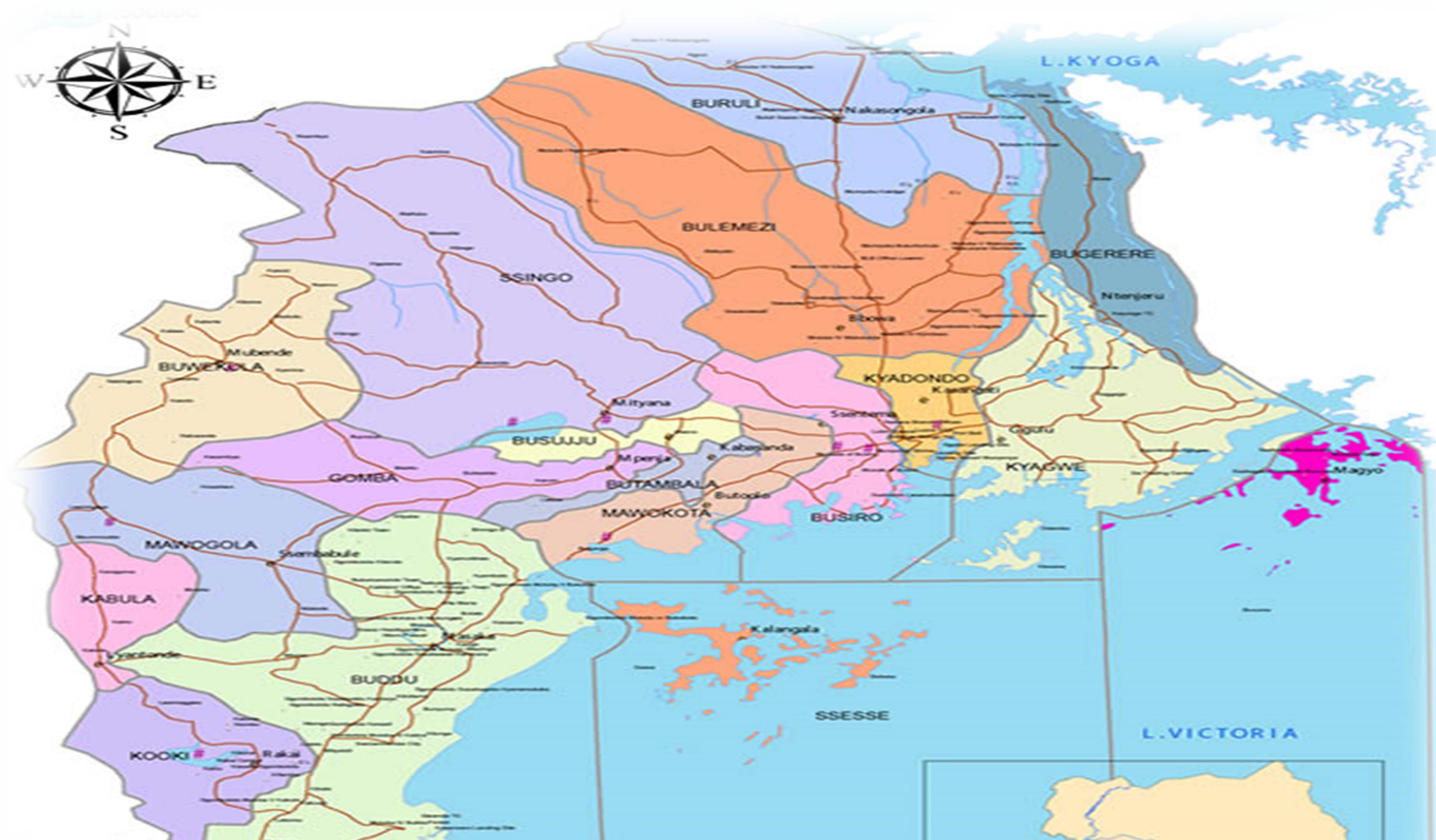


2) Eby'ensula



3) Ebya tekiniologiyoc





Legend

— River	BUTAMBALA	BULEMEZI	SSINGO
■ BUSUMU	BUWEKOLA	BUGERERE	Embuge y'Essaza
■ MAWOGOLA	BUSUJU	SSESSE	Ekyalo
■ KYADONDO	BUSIRO	BUDDU	Ennyanja
■ KOOKI	KABULA	BURULI	Engaudi
■ MUBENDE	BURULI	KOMBA	

MANYA ESSAZA LYO