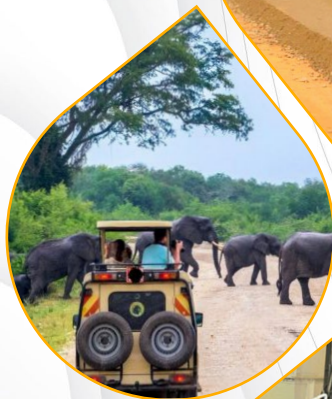




UGANDA BUREAU OF STATISTICS



FREQUENTLY ASKED QUESTIONS ABOUT THE UGANDA BUSINESS INQUIRY (UBI) - 2022





IN THIS BRIEF...

| | |
|--|----|
| 1. What is the Uganda Business Inquiry (UBI)? | 3 |
| 2. When was the last UBI undertaken? | 4 |
| 3. How often is the UBI undertaken? | 4 |
| 4. How is the data from UBI useful? | 5 |
| 5. What is the goal of the UBI-2022? | 5 |
| 6. What are the objectives of the UBI-2022? | 5 |
| 7. What is the Coverage of the UBI-2022? | 6 |
| 8. What data will be collected under the UBI-2022? | 6 |
| 9. What are the main outputs expected from UBI - 2022? | 7 |
| 10. How did you select my business for the UBI - 2022? | 8 |
| 11. How many Questionnaires are you going to use in UBI - 2022? | 8 |
| 12. What method are you going to use to collect the data? | 9 |
| 13. How will the UBI-2022 data be disseminated? | 9 |
| 14. How secure is the information I give to the field interviewers? | 9 |
| 15. How different is the UBI information from that collected by URA? | 10 |
| 16. So what is expected of Ugandans? | 10 |



PREAMBLE

The Uganda Bureau of Statistics (UBOS) Act, 1998 provides for the development and maintenance of a National Statistical System (NSS) to ensure collection, analysis and publication of integrated, relevant, reliable and timely statistical information. It established the Bureau as the coordinating, monitoring and supervisory body for the National Statistical System. In addition UBOS is the source of official statistical information and is, therefore responsible for providing high quality statistical information, promoting standardisation and providing guidance and training to users and other providers of statistics.

In this financial year 2021/2022, the UBOS with funding from Government of Uganda (GOU) is undertaking the Uganda Business Inquiry across the country. The survey will collect general information from businesses, Employment, Expenses, Income and Utilization of Assets.

Data from the exercise is important and will facilitate the compilation of a series of economic indicators such as Value Added, Gross Output, Intermediate Consumption and gross Fixed Capital Formation which are necessary for estimating the contribution of sectors to Gross Domestic Product. In this era of COVID-19, a number of business establishments have had their business operations affected. The indicators arising out of this inquiry will form a basis for businesses to re-align their operations to survive.

1. What is the Uganda Business Inquiry (UBI)?

The UBI is an economic survey conducted to collect data on the key economic performance indicators of the economy based on a nationally representative sample of business establishments.





2. When was the last UBI undertaken?

The last UBI was carried out in 2009/10. It followed previous UBI series undertaken in 1964 -1969, 1971, 1989 2000/2001 and 2009/10. The details of the sectors covered under the previous UBI series are as below:

| Year of Survey | Reference Period | Sectors Covered | Coverage -Employment | Coverage-Region |
|-----------------|------------------|--|---|--|
| 1964-1969; 1971 | N/A | Mining & quarrying, manufacturing, Construction, Electricity, Gas and Water. | Businesses employing 10 persons or above except 1965 and 1971 when coverage was for businesses employing 5 and above. | Entire country |
| 1970 | N/A | Cotton Ginning, Coffee Processing, and Manufacture of Black Tea | Businesses employing 10 persons or above | Entire country |
| 1989 | 1989/90; 1990/91 | All sectors except Finance, Insurance, Health, Education, Posts, Telecommunications and the Public Sector | Businesses employing 5 or more persons | Northern districts of Kitgum, Kotido and Moroto not covered. |
| 2003 | 2000/2001 | All sectors were covered except the Public Sector | All businesses with a fixed location irrespective of the number of employees. | All regions were covered |
| 2010/11 | 2009/10 | All sectors were covered except Public administration and Defense; Compulsory Social Security, and Activities of Extraterritorial Organizations and Bodies | All employment size bands were covered, i.e., from 1 to 500 or more employees | Entire country (covering both formal and Informal sectors) |

3. How often is the UBI undertaken?

As per the International Recommendations for Industrial Statistics, 2018, the UBI is implemented every after five (05) years.

4. How is the data from UBI useful?

Indicators from the UBI play a key role in informing policy makers and planners to measure progress or performance of the economy based on a nationally representative sample of business establishments. The UBI provides data for monitoring some economic indicators in the National Development Plan III (NDP III) and international frameworks like the SDGs.

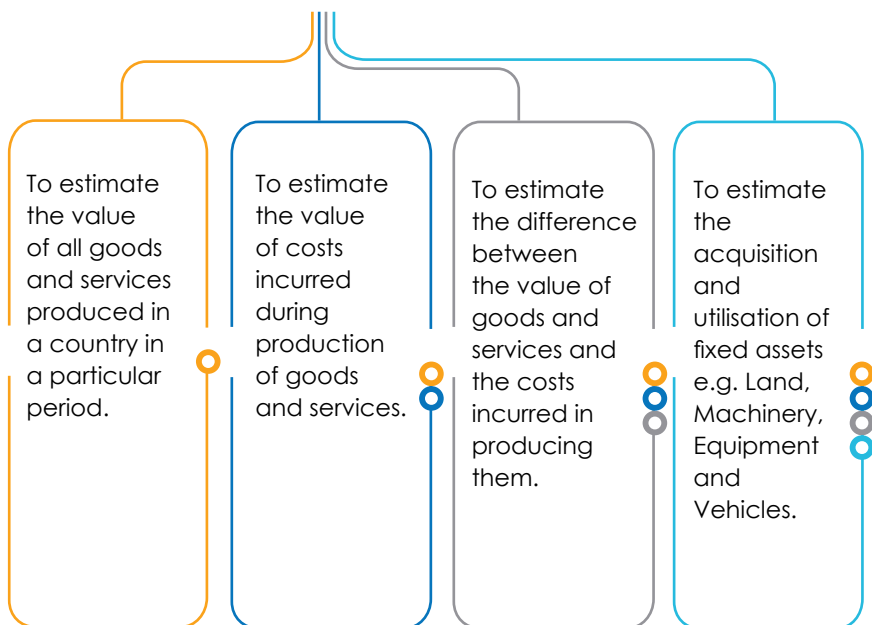


Specifically, UBI data is used to classify businesses according to Turnover bands to guide on strategic policy interventions, assess skills gaps, labour availability, demand and supply of goods and services.

5. What is the goal of the UBI-2022?

The goal of the Inquiry is to facilitate the formulation and update of business reforms and changes in macro-economic policy that are reflected in Uganda's short, medium and long-term Development Frameworks, namely, the Annual Budget, National Development Plan and Vision 2040.

6. What are the objectives of the UBI-2022?



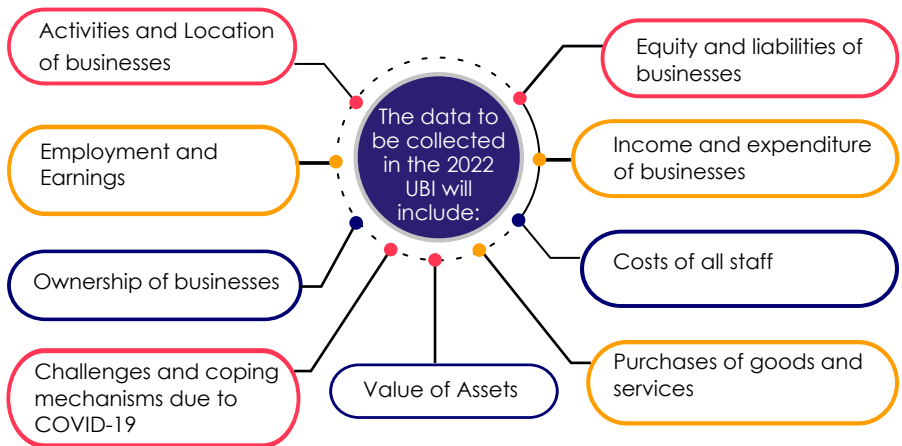


7. What is the Coverage of the UBI-2022?

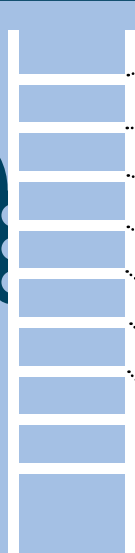
The 2019/20 UBI will cover both the Formal and Informal sectors and all economic sectors as defined in the International Standard Industrial Classification (ISIC) Rev 4. However, it will exclude Section U, i.e., Activities of Extraterritorial Organizations and Bodies. The 2019/20 UBI will cover all the districts in the country as of the year 2020. Both formal and informal establishments will be covered.



8. What data will be collected under the UBI-2022?



9. What are the main outputs expected from UBI - 2022?



• The value of all goods and services produced in a country in a particular period.

• The value of costs incurred during production of goods and services.

• The difference between the value of goods and services and the costs incurred in producing them.

• The acquisition and utilisation of fixed assets e.g. Land, Machinery, Equipment and Vehicles

• The relative importance of activities

• Total employment by activity

• Average monthly earnings

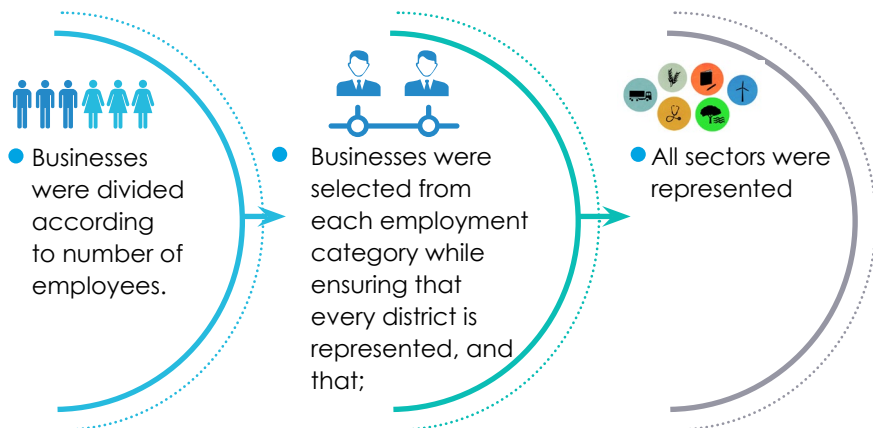
• Labour costs by activity





10. How did you select my business for the UBI - 2022?

We carried out a census of all businesses in 2019 and developed a list. We then selected businesses from that list using the criteria below:



11. How many Questionnaires are you going to use in UBI - 2022?

Fifteen Questionnaires will be used targeting key economic sectors specifically; Agriculture, Fishing and Forestry, Mining and Quarrying, Manufacturing, Construction, Trade, Accommodation & Food Service activities among others, as summarized below:

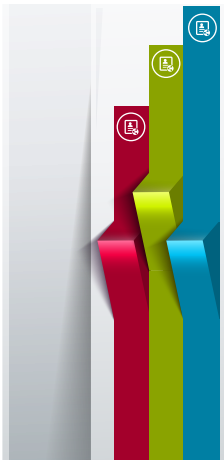
| SN | Questionnaire Type | Coverage |
|----|---------------------------------|---|
| 1 | Agriculture, Fishing & Forestry | Only agricultural units with financial accounts |
| 2 | Mining and Quarrying | Businesses with Final Accounts |
| 3 | Manufacturing | Businesses with Final Accounts |
| 4 | Construction | Businesses with Final Accounts |
| 5 | Trading | Businesses with Final Accounts |
| 6 | Hotels and Restaurants | Businesses with Final Accounts |
| 7 | Other Services | Businesses with Final Accounts (Personal Services, Real Estate among others) |
| 8 | Finance & Banking | Businesses with Final Accounts |

| SN | Questionnaire Type | Coverage |
|----|--------------------------------|--|
| 9 | Insurance | Businesses with Final Accounts |
| 10 | Non-Governmental Organizations | Non-Governmental organisations with financial accounts. |
| 11 | Health Services | Private Hospitals with Final Accounts |
| 12 | Communication Services | Telecom service providers with Final Accounts |
| 13 | Utilities | Utility service providers(Electricity and Water) with Final Accounts |
| 14 | Education Services | Only private Education Institutions with Final Accounts |
| 15 | Informal Sector Questionnaire | For businesses without Final Accounts across all sectors |

12. What method are you going to use to collect the data?

Two methods will be used namely; the Computer Assisted Personal Interviewing (CAPI) and the Paper and Pencil Interviewing (PAPI). The CAPI allows for Interviewer - Respondent interaction and information is directly recorded on a tablet personal computer. On the other hand, the PAPI allows for self-interviewing in addition to Interviewer - Respondent interaction.

13. How will the UBI-2022 data be disseminated?



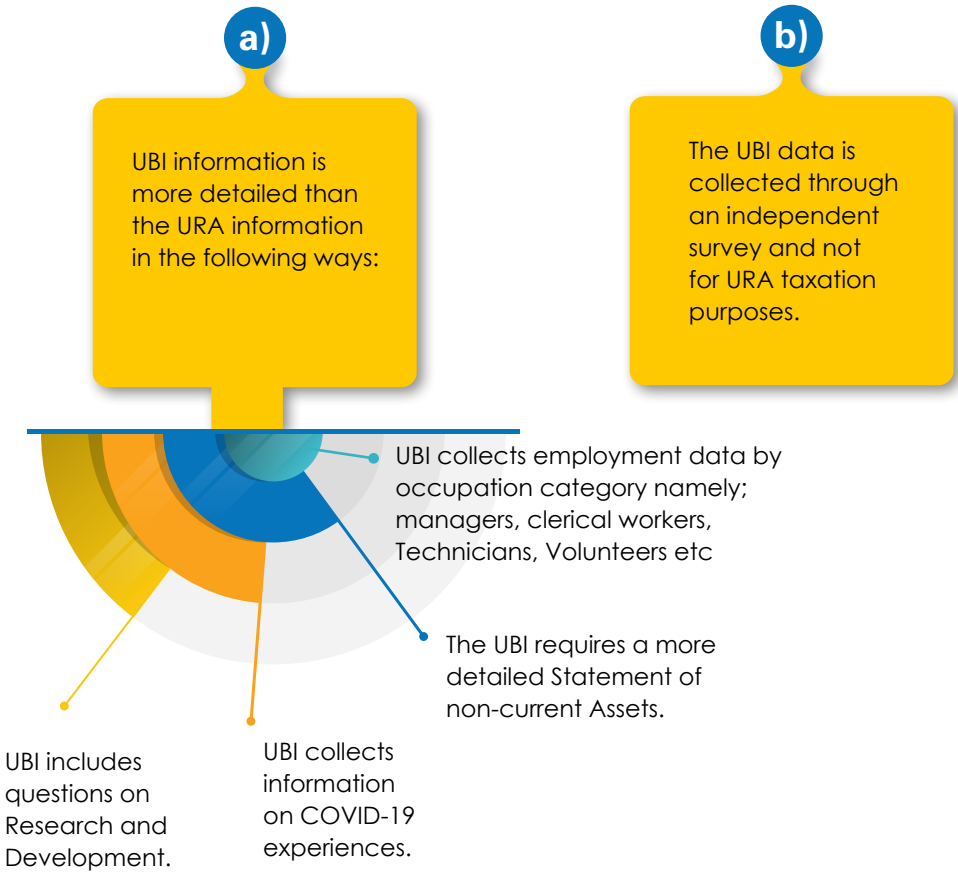
- a) National and regional workshops
- b) A press conference will also be held specifically for the media during which a press release will be distributed.
- c) Distribution of various print materials including the final report, and other more user-friendly summary documents will be availed to users.



14. How secure is the information I give to the field interviewers?

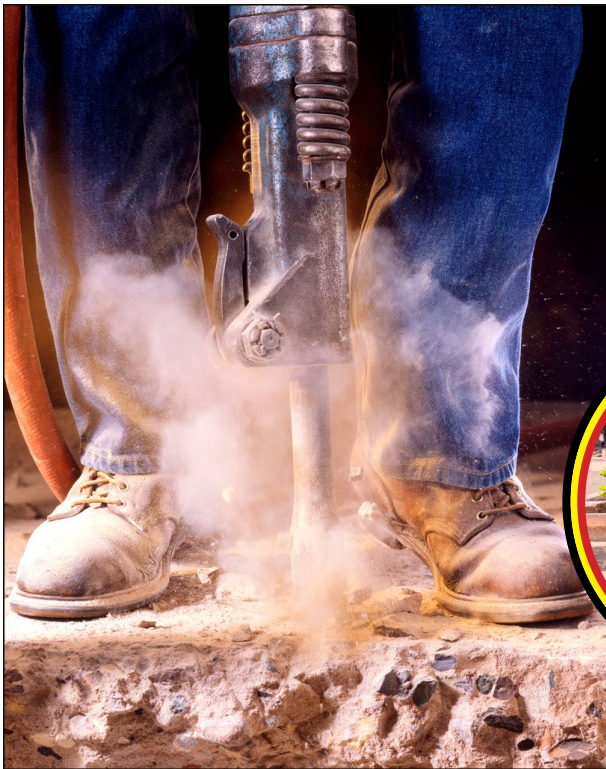
UBOS assures all people that the information collected will be kept confidential, published in aggregate form and only for the intended purpose.

15. How different is the UBI information from that collected by URA?



16. So what is expected of Ugandans?

The Bureau appeals to all Ugandans to embrace this activity and provide us with clear and true information so that as a government, we can come up with good policies that will enable the development of favourable economic and business policies especially owing to the effects of the COVID-19 pandemic.





*You want to access instant
statistics indicators*

WE HAVE MADE IT EASY...

**Download
our UGSTATS
Mobile App
from your
google play
store...**

**And get all you want
by a mere click.**





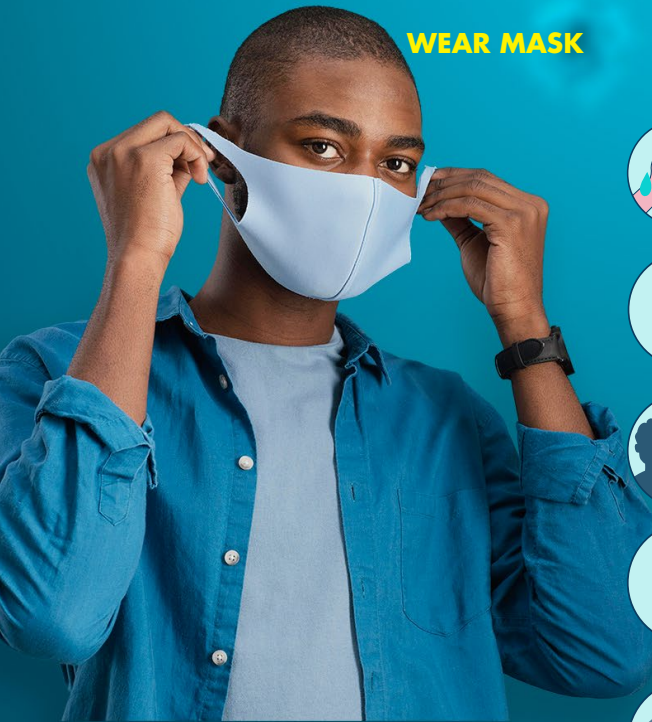
**FOLLOW US ON FACEBOOK AND
TWITTER FOR INSTANT UPDATES
ON OUR ONGOING AND UPCOMING
ACTIVITIES...**



TOGETHER WE CAN BEAT THE PANDEMIC....

But HAVE YOU TAKEN YOUR COVID-19 JAB?

Appeal is for all persons to take the jab and continuously observe the Covid-19 Standard Operating Procedures at all times in order to flatten the COVID-19 curve.



WEAR MASK



**WASH YOUR
HANDS**



**CLEAN AND
DISINFECT**



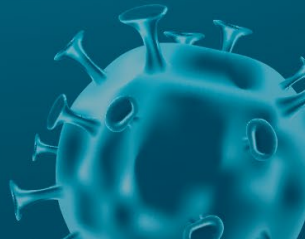
AVOID CROWDS



**AVOID
TOUCHING WITH
UNWASHED
HANDS**



STAY AT HOME



WE ARE EVIDENCE BASED





FOR MORE INFORMATION CONTACT:

Mr. James Muwonge, Director, Methodology and Statistical Coordination
Services: **Tel: +256-772407860**

Ms. Winnie N. Mulindwa - Head of Department / Economic Censuses and
Surveys: **Tel: +256-755411758**

Ms. Margaret Nakirya - Principal Statistician / Economic Censuses and
Surveys: **Tel: +256-772316795**

UGANDA BUREAU OF STATISTICS

Plot 9 Colville Street

P.O Box 7186, Kampala – Uganda

Tel: +256-414-706000

Fax: +256-414-237553

Email: ubos@ubos.org

Website: www.ubos.org

 Uganda Bureau of Statistics

 :@StatisticsUg