



# UGANDA BUREAU OF STATISTICS

P.O. Box 7186, Kampala; Tel: 0414-706000; Fax: 0414-237553; Email: ubos@ubos.org; Website: www.ubos.org



## PRESS RELEASE

### PRODUCER PRICE INDEX AGRICULTURE - UP-TO JUNE 2021

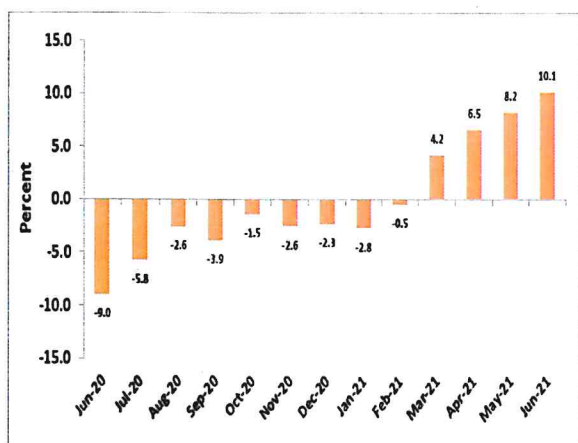
#### HIGHLIGHTS

##### 1.1 Annual Inflation

The inflation rates measured by the Producer Price Index Agriculture (PPI-A) for the 12 months to June 2021 (covering prices for Crops, Animals, Fisheries and Forestry products) registered an annual increase of 10 percent for the year ending June 2021.

The change follows two successive annual increases of 8.2 percent and 6.5 percent recorded for the year ending May and April 2021 respectively, Figure 1.1.

Fig 1.1: Annual Headline Inflation to June 2021.



**James Muwonge**  
Ag. EXECUTIVE DIRECTOR

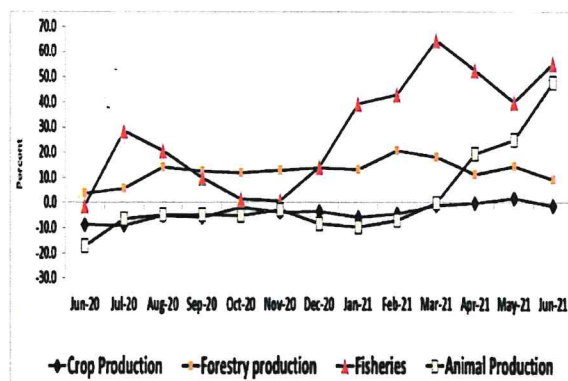
The main contributors to the annual increase in June 2021 were;

- An increase of 47.7% in average price of animal products.
- An increase of 55.3% in average price of Fish and aquaculture products.
- An increase of 9.4 % in average price of Forestry products

An annual decline of 1.2 % in average price of Crops was recorded in the year ending June 2021 as showed in Table 3.

The pattern of annual changes by divisions of the index up to June 2021 is presented in Figure 1.2 below.

Fig 1.2: Annual Inflation by PPI-A Divisions

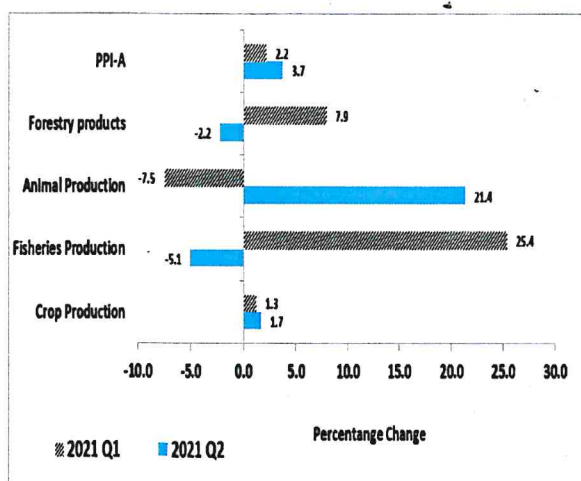


##### 1.2 Quarter-on-Quarter Inflation

The section below presents price developments during quarter two compared to the first quarter of 2021. In the period April – June 2021, The prices

for animal products increased, pushing up the headline index by 3.7 percent compared to an increase of 2.2 percent recorded in the first quarter ending March 2021. The average price for animal species increased due to rising demand. Also noticeable during the previous quarter was the increase in average price of most crops caused by seasonal effects on the supplies. However, the average Prices for Forestry products and fish declined by 2.2 percent and 5.1 percent respectively in the quarter ending June 2021(Fig 1.3).

**Fig: 1.3 Quarterly Changes by PPI-A Division 2021**



**Crop Production:** The Crop Prices index increased by 1.7 percent in 2021 quarter 2 due to reduced supplies. Notable increase was recorded in the prices of; Cereals (18.7%), Oil seeds(8.3%), Rice(11.7%), Tobacco(39.2%), Bananas and Plantains(0.9%) as shown in Table 2.

However, some groups of crop registered price decline as follows; the Leafy or stem vegetables

(41.1%), Fruit bearing vegetables (10.1%), Root and tuberous vegetables (19.3%), Table 4.

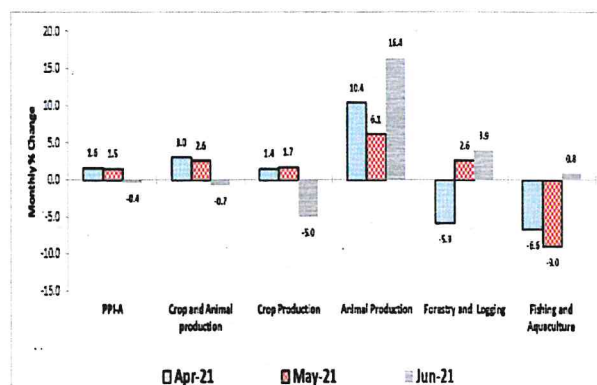
**Animal Production:** The Animal Production Price Index increased (Fig.2) in 2021 Q2 by 21.4 percent mainly due to price increases for cattle (19.8%), Eggs(22%), Raw milk (16.4%) Sheep and Goats (39.4%), Poultry (36%).

However, prices decline was registered for Swine (1.8%), and Honey (4.2%), Table 4. The general rise in prices of animal products is attributed to high demand during the period in most parts of the country.

## 2.1 Monthly Inflation

The Headline PPI-A registered a decline by 0.4 percent in June 2021 after two successive increases of 1.6 percent and 1.5 percent observed in the months of April and May 2021 respectively as indicated in Table 1. The increase in June 2021 was mainly due to increases in prices for animal production (16.4%) and forestry and logging (3.9%), Fig 2.1

**Fig 2.1: Monthly Inflation by PPI-A April – June 2021.**



The monthly changes indicate that the average price for crops production decreased by 5.0 percent in June 2021 after two successive increase in April and May 2021,(Fig 2.1). The detailed monthly average price change by group of crops is presented in Table 2. The general increase in the prices of most group items is attributed to seasonal factors that caused intermittent supplies. In June 2021, while the general experience was declining prices for crops, notable increases were registered in the prices of Cereals (5.6%), Tobacco (6.2%), Fibre crops(3.6%) and Beverage Crops(4.2).

In the case for animals, the Producer prices for Animal Production shot high by 16.4 percent in June 2021 which was similar record of rising prices in April(10.4%) and May (6.1%). All animal products registered higher average prices in June 2021 except egg production whose average price declined by 0.9% presented in Table 1.

**Table 1: Monthly Change in Group Price Indices April – June 2021**

Division/Group		Apr-21	May-21	Jun-21
<b>Crop and Animal Production</b>		3.0	2.6	-0.7
<b>Crop Production</b>		1.4	1.7	-5.0
01	Growing of cereals	17.9	7.9	5.6
02	Growing of Legumious crop	-4.5	-1.7	-10.0
03	Growing of oil seeds	5.3	3.0	-9.2
04	Growing rice	10.7	9.2	-5.6
05	Growing leafy or stem vegetables	-22.1	-25.4	-12.9
06	Growing of fruit bearing vegetables	2.3	-18.9	-5.4
07	Growing of root or tuberous vegetables	-15.7	-3.9	-17.5
08	Growing of roots tubers	3.6	6.8	-4.0
09	Growing sugarcane	0.0	0.0	0.0
10	Growing tobacco	30.4	6.7	6.2
11	Growing of fibre crops	-0.6	-1.9	3.6
12	Growing of tropical fruits and subtropical fruits	2.1	3.2	-12.2
13	Banana and plantain	5.8	-2.2	-8.2
14	Growing of citrus fruits	-8.7	14.8	-15.1
15	Growing of beverage crops	-0.8	5.4	4.2
<b>Animal Production</b>		10.4	6.1	16.4
16	Raising of Cattle	9.9	7.0	20.2
17	Production of raw milk	11.2	3.4	18.2
18	Raising of sheep and goats	17.1	10.5	22.1
19	Raising of swine/pigs	3.5	-10.3	9.4
20	Raising of poultry	13.1	23.9	9.0
21	Production of eggs	9.4	12.3	-0.9
22	Raising of other animals (honey & rabbits)	7.1	-21.9	3.8
23	Bee keeping and production of honey and beeswax	6.3	-25.2	4.2
<b>Forestry and Logging products</b>		-5.9	2.6	3.9
24	Logging	-5.9	2.6	3.9
<b>Fresh and Aquaculture fisheries</b>		-6.6	-9.0	0.8
25	Fresh water Fishing	-6.9	-9.3	0.9
26	Fresh water Aquaculture	12.1	7.0	-2.5
<b>PPI-A</b>		<b>1.6</b>	<b>1.5</b>	<b>-0.4</b>

**Table 2 Quarter-on-Quarter Change in PPI-A by Groups 2020 Q1 - 2021 Q2**

Division/Group		2020				2021	
		Q1	Q2	Q3	Q4	Q1	Q2
<b>Crop and Animal Production Division</b>		<b>0.5</b>	<b>-4.2</b>	<b>1.2</b>	<b>-0.9</b>	<b>-0.2</b>	<b>5.1</b>
<b>Crop Production</b>		<b>2.0</b>	<b>-2.2</b>	<b>-1.8</b>	<b>-1.1</b>	<b>1.3</b>	<b>1.7</b>
01	Growing of cereals (Except rice)	-2.0	19.2	-18.7	-4.7	-14.6	18.7
02	Growing of Legumious crop	1.0	8.6	-3.7	-11.7	3.7	-4.9
03	Growing of oil seeds	1.6	-0.7	2.1	5.6	17.2	8.3
04	Growing rice	-2.8	17.0	-14.4	-1.6	-9.3	11.7
05	Growing leafy or stem vegetables	30.3	-12.4	-5.4	-2.7	42.6	-41.1
06	Growing of fruit bearing vegetables	22.4	-17.6	-8.7	-3.4	31.7	-10.1
07	Growing of root, bulb or tuberous vegetables	3.2	-14.2	29.7	-12.2	31.7	-19.3
08	Growing of root tubers	8.3	-9.2	6.9	-0.6	-14.9	7.1
09	Growing sugarcane	-9.1	0.0	-10.4	0.0	0.0	0.0
10	Growing tobacco	13.3	37.0	-22.7	-14.6	-8.4	39.2
11	Growing of fibre crops	1.6	-21.5	7.0	16.2	22.6	2.9
12	Growing of tropical fruits and subtropical fruits	-8.3	-16.3	7.0	10.3	-10.9	1.0
13	Banana and plantain	-9.1	-14.9	4.7	10.8	-11.7	0.9
14	Growing of citrus fruits	42.0	-9.0	-4.3	-17.5	71.3	2.1
15	Growing of beverage crops	-2.0	-2.8	6.0	-0.3	2.9	5.4
16	Growing of Spices, Aromatic crops	-33.8	4.9	0.5	-0.3	-50.0	4.7
<b>Animal Production</b>		<b>-8.0</b>	<b>-9.6</b>	<b>14.9</b>	<b>-1.0</b>	<b>-7.5</b>	<b>21.4</b>
17	Raising of cattle	-3.4	-14.9	16.5	-0.6	-3.5	19.8
18	Production of of raw milk	5.8	-30.6	24.8	3.3	0.5	16.4
19	Raising of sheep and goats	-12.4	-18.1	18.2	3.9	-11.2	39.4
20	Raising of swine/pigs	-3.6	-5.7	29.1	-5.3	-2.5	-1.8
21	Raising of poultry	-6.0	-10.7	2.2	2.0	-14.7	36.0
22	Production of eggs	-4.5	6.2	-0.3	-1.5	5.8	22.2
23	Raising of other animals (Honey pdn & Rabbits)	-4.8	-15.6	-30.8	-1.9	33.4	-4.2
<b>Forestry and Logging products</b>		<b>3.9</b>	<b>2.7</b>	<b>5.6</b>	<b>0.2</b>	<b>7.9</b>	<b>-2.2</b>
24	Logging	3.9	2.7	5.6	0.2	7.9	-2.2
<b>Fresh and Aquaculture Fisheries</b>		<b>-11.1</b>	<b>-5.3</b>	<b>17.5</b>	<b>6.6</b>	<b>25.4</b>	<b>-5.1</b>
25	Fresh water Fisheries	-11.3	-5.4	18.3	6.6	25.7	-5.4
26	Fresh water Aquaculture Fisheries	-5.6	-3.7	-13.0	9.9	7.2	16.2

**Table 3: Annual Change in the PPI-A January 2019 – June 2021**

<b>Division</b>	<b>PPI-A</b>	<b>Crop and Animal production</b>	<b>Crop Production</b>	<b>Animal Production</b>	<b>Forestry and Logging</b>	<b>Fishing and Aquaculture</b>
<b>Weights</b>	1000.0000	882.0013	727.8881	154.1132	37.2748	80.7238
2017/18	1.5	0.9	-0.9	9.4	22.3	-2.1
2018/19	-0.8	-0.5	-0.7	0.6	8.8	-10.3
2019/20	3.5	4.6	5.6	0.3	-2.6	-5.2
2020/21	0.5	-2.3	-3.4	2.4	13.1	29.7
2018	-4.3	-4.9	-7.0	4.2	8.7	-5.2
2019	6.9	8.9	11.2	-0.5	2.0	-12.6
2020	-2.5	-3.5	-3.4	-4.1	4.5	6.2
Jan-19	-2.4	-3.1	-2.6	-5.2	14.6	-3.7
Feb-19	0.0	0.5	2.1	-6.4	5.3	-8.3
Mar-19	1.4	2.6	5.3	-9.2	5.7	-14.8
Apr-19	5.3	7.5	9.9	-2.9	5.7	-19.4
May-19	10.6	13.5	17.5	-2.7	5.9	-18.7
Jun-19	11.6	15.6	19.7	0.3	6.1	-26.3
Jul-19	12.5	16.0	19.8	1.8	4.3	-21.6
Aug-19	10.1	13.6	17.0	1.0	-4.1	-19.0
Sep-19	10.7	13.8	15.9	5.8	-3.7	-13.9
Oct-19	5.6	6.9	8.7	-0.2	-4.5	-2.3
Nov-19	8.2	9.6	11.9	0.8	-3.8	0.9
Dec-19	9.5	11.6	12.0	9.9	-6.1	-3.4
Jan-20	7.6	9.3	9.0	10.3	-2.9	-5.8
Feb-20	5.7	6.7	5.6	11.6	-3.0	-0.6
Mar-20	-1.0	-1.1	-2.0	3.4	-3.0	1.4
Apr-20	-4.7	-5.4	-4.3	-10.5	-3.7	4.9
May-20	-8.3	-9.3	-8.8	-11.8	-4.4	4.3
Jun-20	-9.0	-10.2	-8.7	-17.1	3.6	-1.3
Jul-20	-5.8	-8.4	-8.9	-6.3	5.5	28.5
Aug-20	-2.6	-4.9	-4.9	-4.8	14.1	20.7
Sep-20	-3.9	-5.7	-5.9	-4.8	12.6	9.8
Oct-20	-1.5	-2.4	-1.7	-5.0	11.8	1.5
Nov-20	-2.6	-3.6	-3.8	-2.6	12.7	0.7
Dec-20	-2.3	-4.5	-3.5	-8.4	14.0	14.3
Jan-21	-2.8	-6.6	-5.9	-9.6	13.3	39.2
Feb-21	-0.5	-4.8	-4.3	-7.0	20.6	43.0
Mar-21	4.2	-0.9	-1.1	-0.2	17.9	64.4
Apr-21	6.5	2.9	-0.3	19.3	11.3	52.7
May-21	8.2	5.5	1.6	25.1	14.6	39.9
Jun-21	10.1	7.0	-1.2	47.7	9.4	55.3

***For more information, please contact***

Mr. Okello Patrick  
Head of Production & Environment Department  
Tel: 0772-565326, Fax: +256- 0414-230370  
Email: Patrick.okello@ubos.org, ubos@ubos.org