

# UGANDA CONSUMER PRICE INDEX (2016/17=100)

JANUARY 2023

UGANDA BUREAU OF STATISTICS



P.O. Box 7186, Kampala;  
Tel: 0414 – 706000;  
Fax: 0414 – 237553;  
Email: [ubos@ubos.org](mailto:ubos@ubos.org);  
Website: [www.ubos.org](http://www.ubos.org)



## FOREWORD

This publication provides the monthly Consumer Price Indices for Uganda (Composite) and for the ten centres of Kampala High Income, Kampala Middle Income, Kampala Low Income, Jinja, Mbale, Masaka, Mbarara, Fortportal, Gulu and Arua. All the baskets are for the urban households.

The current Consumer Price Index has been rebased from 2009/2010 to 2016/2017, using weights derived from the Uganda National Household Survey (UNHS VI) that was conducted from July 2016 to June 2017. The rebased CPI is classified using international standards, referred to as Classification of Individual Consumption According to Purpose (COICOP 2018). This is a shift from the COICOP 1999 that was used in the earlier series. COICOP 2018 is more detailed than the previous (1999) version, responding to the users' need for more detail, and addresses several other issues that required revision of the classification. The new COICOP of 2018 reflects the significant changes in goods and services in some areas, improved links of COICOP to other classifications, and addresses emerging statistical and policy needs of regional and international users.

At the elementary aggregate (EA) level, the indices are computed using the Jevons (Geometric Mean) method for all items within the elementary aggregates. The modified Laspeyres index formula is used to compute higher level indices. The National CPI is computed as a weighted average of the ten centres mentioned above and rebased indices are available from July 2017 to date at EA level.



Chris N. Mukiza

**EXECUTIVE DIRECTOR**

## ACRONYMS AND DEFINITIONS

**COICOP:** Classification of Individual Consumption According to Purpose, is a nomenclature developed by the United Nations Statistics Division to classify and analyse individual consumption expenditures incurred by households, non-profit institutions serving households and general government according to their purpose.

**CPI:** Consumer Price Index - a general indicator of price levels paid by households for consumer goods and services.

**CPI basket:** A commonly used term for the goods and services priced for the purpose of compiling the CPI.

**Elementary aggregate (EA):** The lowest level of commodity classification in the CPI, and the only level for which index numbers are constructed by direct reference to price data.

**Inflation:** A term commonly used to refer to changes in price levels. A rise in prices is called inflation, and a persistent fall is called deflation.

**Jevons price index:** An elementary price index defined as the un-weighted geometric average of the sample price relatives. It can also be defined as the un-weighted geometric average of the current to base period price relatives.

**Laspeyres price index:** The Laspeyres price index is an index formula used in price statistics for measuring the price development of the basket of goods and services consumed in the base period. The question it answers is how much a basket that consumers bought in the base period would cost in the current period.

**Outlet:** The interface between a supplier of products and the consumer. It may be a shop, a market stall, a catalogue, a website etc. Also referred to as a "retail outlet", although it can include wholesale outlets which also sell directly to the consumers

**Outlier:** A term used to describe any extreme value in a set of data, such as a price or price relative that requires further investigation or has been verified as incorrect

**Price relative:** A measure of price movements: the ratio of the price level in one period to the price level in another.

**Reference base:** The period in which the CPI is given a value of 100.0. The CPI is currently on a reference base of 2016/17.

**Weight:** The measure of the importance of an item in the index regimen relative to the other items. Weights can be expressed in either quantity or value terms. Value weights are used in the CPI.

## TABLE OF CONTENTS

|   |     |
|---|-----|
| FOREWORD .....  | I   |
| ACRONYMS AND DEFINITIONS .....  | II  |
| TABLE OF CONTENTS .....   | III |
| LIST OF TABLES .....  | IV  |
| 1.0 HIGHLIGHTS OF UGANDA CPI FOR JANUARY 2023 .....                         | 1   |
| 1.1 Annual Headline Inflation .....   | 1   |
| 1.2 Annual Inflation by COICOP Divisions .....                              | 4   |
| 1.3 Annual Goods Inflation .....  | 5   |
| 1.4 Monthly Inflation .....   | 5   |
| 1.5 Monthly Inflation by COICOP Divisions .....                             | 6   |
| 1.5 Annual Headline Inflation by Income Groups and Geographical areas ..... | 8   |
| ANNEX 1: ANNUAL INFLATION BY COICOP DIVISIONS .....                         | 10  |
| 01 Food and Non-Alcoholic Beverages .....                                   | 10  |
| 02 Alcoholic Beverages, Tobacco & Narcotics .....                           | 10  |
| 03 Clothing and Footwear .....  | 11  |
| 04 Housing, Water, Electricity, Gas and other Fuels .....                   | 11  |
| 05 Furnishings, Household Equipment and Routine Household Maintenance ..... | 12  |
| 06 Health .....   | 12  |
| 07 Transport .....  | 12  |
| 08 Information and Communication .....                                      | 13  |
| 09 Recreation, Sport and Culture .....                                      | 13  |
| 10 Education Services .....   | 13  |
| 11 Restaurants and Accommodation Services .....                             | 14  |
| 12 Insurance and Financial Services .....                                   | 14  |
| 13 Personal Care, Social Protection and Miscellaneous Goods .....           | 14  |
| ANNEX 2: MONTHLY INFLATION BY COICOP DIVISIONS .....                        | 15  |
| 01 Food and Non-Alcoholic Beverages .....                                   | 15  |
| 02 Alcoholic Beverages, Tobacco & Narcotics .....                           | 15  |
| 03 Clothing and Footwear .....  | 15  |
| 04 Housing, Water, Electricity, Gas and other Fuels .....                   | 15  |
| 06 Health .....   | 16  |
| 07 Transport .....  | 16  |
| 08 Information and Communication .....                                      | 17  |
| 09 Recreation, Sport and Culture .....                                      | 17  |
| 10 Education Services .....   | 17  |
| 11 Restaurants and Accommodation Services .....                             | 18  |
| 12 Insurance and Financial Services .....                                   | 18  |
| 13 Personal Care, Social Protection and Miscellaneous Goods .....           | 18  |

## LIST OF TABLES

TABLE 6: UGANDA CONSUMER PRICE INDEX (CPI) AND INFLATION FOR CORE, FOOD CROPS, & EFU: (2016/17) = 100..... 19

TABLE 7: ENERGY FUEL AND UTILITIES (EFU) INDEX, ANNUAL AND MONTHLY % CHANGES, (2016/17) = 100..... 20

TABLE 8: UGANDA ANNUAL INFLATION BY COICOP DIVISIONS (OCTOBER 2021 – JANUARY 2023).

A

TABLE 9: UGANDA MONTHLY INFLATION BY COICOP DIVISIONS (OCTOBER 2021 – JANUARY 2023).

B

TABLE 10: UGANDA CONSUMER PRICE INDEX (CPI) BY COICOP DIVISION: (2016/17) = 100..C

TABLE 11: UGANDA CONSUMER PRICE INDEX (CPI) AND INFLATION FOR CORE & NON CORE: (2016/17) = 100.....D

TABLE 12: UGANDA CONSUMER PRICE INDEX (CPI) AND INFLATION FOR FOOD & NON FOOD: (2016/17) = 100.....E

TABLE 13: UGANDA CONSUMER PRICE INDEX (CPI) AND INFLATION FOR FOOD CROPS, OTHER GOODS, SERVICES AND ENERGY FUEL & UTILITIES: (2016/17) = 100.....F

TABLE 14: UGANDA ANNUAL AND MONTHLY INFLATION BY INCOME GROUPS AND GEOGRAPHICAL AREAS : .....G

TABLE 15: UGANDA CONSUMER PRICE INDEX (CPI) BY INCOME GROUPS AND GEOGRAPHICAL AREAS : (2016/17) = 100. ....H

## 1.0 HIGHLIGHTS OF UGANDA CPI FOR JANUARY 2023

### 1.1 Annual Headline Inflation

The annual inflation as measured by the consumer price index for Uganda for the 12 months to January 2023 is 10.4 percent compared to 10.2 percent registered in the year ended December 2022. This was due to the increase in core inflation that was registered at 9.0 percent in the year ending January 2023 compared to 8.4 percent registered in the year ended December 2022.

The annual core inflation was mainly attributed to the increase in the annual services inflation of 4.9 percent in the year ending January 2023 compared to 3.6 percent registered in the year ended December 2022. Annual inflation of passenger transport by road that increased to 3.4 percent in January 2023 compared to minus 12.6 percent in December 2022 was the main driver. The other driver for the rising core inflation is the annual other goods inflation registered at 12.3 percent in January 2023 compared to 12.5 percent in December 2022. In this group, rice inflation increased to 52.0 percent in January 2023 compared to 42.6 percent in December 2022 and sugar inflation increased to 50.4 percent in January 2023 compared to 45.7 percent in December 2022.

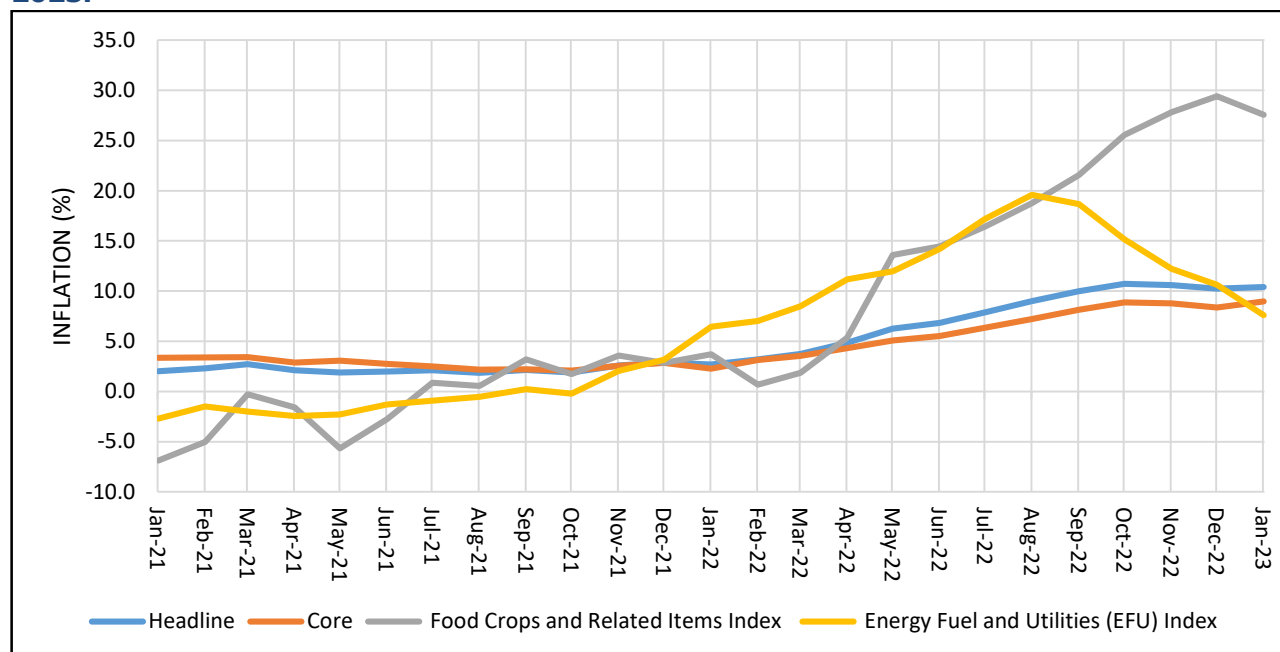
The annual food crops and related items inflation was registered at 27.6 percent in the year ending January 2023 compared to 29.4 percent registered in the year ended December 2022. This was mainly due to matoke inflation registered at 72.4 percent from 77.9 percent in December 2022, oranges inflation registered at minus 12.5 percent in January 2023 compared to 5.7 percent in December 2022, Irish potatoes inflation registered at 30.4 percent in January 2023 compared to 35.6 percent in December 2022 and cabbage inflation registered at 10.8 percent in January 2023 compared to 22.9 percent in December 2022.

The annual energy fuel and utilities (EFU) inflation was registered at 7.6 percent in the year ending January 2023 compared to 10.6 percent registered in the year ended December 2022 . This was mainly due to petrol inflation registered at 7.1 percent in January 2023 compared to 22.0 percent in December 2022, diesel inflation at 30.5 percent in January 2023 compared to 36.1 percent in December 2022 and electricity inflation at minus 10.1 percent in January 2023 compared to minus 9.1 percent in December 2022 as shown in Table 1 and Figure 1.

**Table 1: Annual Headline, Core, Food Crops and EFU Inflation for December 2022 and January 2023.**

| Description                     | Weights | December 2022 | January 2023 |
|---------------------------------|---------|---------------|--------------|
| Headline                        | 1000.00 | 10.2          | 10.4         |
| Core                            | 839.62  | 8.4           | 9.0          |
| <i>Other Goods</i>              | 455.51  | 12.5          | 12.3         |
| <i>Services</i>                 | 384.11  | 3.6           | 4.9          |
| Food Crops and Related Items    | 95.10   | 29.4          | 27.6         |
| Energy Fuel and Utilities (EFU) | 65.28   | 10.6          | 7.6          |

**Figure 1: Annual Headline, Core, Food crops and EFU Inflation: December 2020 – January 2023.**



The overall annual consumer price indices for the 12 months to January 2023 are shown in Table 2 below.

**Table 2: Overall Annual CPI and Rates of Inflation (Base: 2016/17=100)**

| Month          | Overall CPI | Annual Inflation Rate |
|----------------|-------------|-----------------------|
| January 2023   | 126.20      | 10.4                  |
| December 2022  | 126.38      | 10.2                  |
| November 2022  | 126.21      | 10.6                  |
| October 2022   | 126.13      | 10.7                  |
| September 2022 | 125.10      | 10.0                  |
| August 2022    | 123.24      | 9.0                   |
| July 2022      | 122.04      | 7.9                   |
| June 2022      | 120.88      | 6.8                   |
| May 2022       | 119.73      | 6.3                   |
| April 2022     | 117.98      | 4.9                   |
| March 2022     | 116.38      | 3.7                   |
| February 2022  | 115.42      | 3.2                   |
| January 2022   | 114.30      | 2.7                   |

# Key Inflation Drivers

## Other Goods Inflation

January 2022 at 4.3%

- ✓ Rice -3.7%
- ✓ Laundry Bar
- ✓ Soap 23.1%
- ✓ Sugar 4.2%



January 2023 at 12.3%

- ✓ Rice 52.0%
- ✓ Laundry Bar
- ✓ Soap 51.4%
- ✓ Sugar 50.4%



## Annual Food Crops and Related Items Inflation

January 2022 at 3.7%

- ✓ Matoke bunch 22.9%
- ✓ Oranges -11.9%
- ✓ Onions 23.1%
- ✓ Cabbages 19.8%



January 2023 at 27.6%

- ✓ Matoke bunch 72.4%
- ✓ Oranges -12.5%
- ✓ Onions -12.7%
- ✓ Cabbages 10.8%



## Annual Energy, Fuel and Utilities Inflation

January 2022 at 6.5%

- ✓ Petrol 30.5%
- ✓ Diesel 23.6%
- ✓ Charcoal -6.9%



January 2023 at 7.6%

- ✓ Petrol 7.1%
- ✓ Diesel 30.5%
- ✓ Charcoal 14.3%





## 1.2 Annual Inflation by COICOP Divisions

According to the Classification of Individual Consumption According to Purpose (COICOP), the main drivers to the registered inflation were commodities under; 'food and non-alcoholic beverages' whose inflation increased to 22.9 percent in the year ending January 2023 compared to 23.0 percent registered in the year ended December 2022.

Education services inflation was registered at 12.8 percent for the year ending January 2023 the same rate registered for the year ended December 2022.

'Furnishings, household equipment and routine household' inflation was registered at 13.4 percent in January 2023 compared to 14.3 percent registered in December 2022.

Transport inflation increased to 4.9 percent for the year ending January 2023 compared to 1.5 percent registered for the year ended December 2022.

'Restaurants and accommodation services' inflation registered 6.9 percent for the year ending January 2023 compared to 8.1 percent registered for the year ended December 2022.

Housing, water, electricity, gas and other fuels' inflation increased to 5.5 percent for the year ending January 2023 compared to 5.0 percent for the year ended December 2022.

However, there was a decrease in price of commodities under; 'information and communication' whose inflation was registered at minus 0.8 percent for the year ending January 2023 compared to minus 0.9 percent for the year ended December 2022 as shown in Table 3 below.

**Table 3: Annual Changes in the Consumer Price Indices for the COICOP Divisions.**

| <b>13 COICOP Divisions</b>                               | <b>Weight</b>   | <b>Annual %<br/>Change<br/>December<br/>2021-<br/>December<br/>2022</b> | <b>Annual %<br/>Change<br/>January<br/>2022-<br/>January<br/>2023</b> |
|--|-----------------|---|---|
| Food and Non-Alcoholic Beverages                         | 270.54          | 23.0  | 22.9  |
| Alcoholic Beverages, Tobacco and Narcotics               | 38.80           | 8.0   | 8.4   |
| Clothing and Footwear                                    | 69.77           | 4.6   | 3.7   |
| Housing, Water, Electricity, Gas and Other Fuels         | 104.16          | 5.0   | 5.5   |
| Furnishings, Household Equipment and Routine Household   | 48.37           | 14.3  | 13.4  |
| Health   | 47.47           | 2.2   | 1.8   |
| Transport  | 104.55          | 1.5   | 4.9   |
| Information and Communication                            | 44.32           | -0.9  | -0.8  |
| Recreation, Sport and Culture                            | 49.85           | 6.8   | 5.1   |
| Education Services                                       | 57.96           | 12.8  | 12.8  |
| Restaurants and Accommodation Services                   | 87.38           | 8.1   | 6.9   |
| Insurance and Financial Services                         | 22.80           | -0.1  | -0.3  |
| Personal Care, Social Protection and Miscellaneous Goods | 54.04           | 9.3   | 7.9   |
| <b>Overall</b>   | <b>1,000.00</b> | <b>10.2</b>   | <b>10.4</b>   |

### 1.3 Annual Goods Inflation

The goods inflation for the 12 months to January 2023 was registered at 13.8 percent compared to 14.5 percent registered in December 2022. This was mainly due to annual inflation for non-durable (ND) goods that was registered at 17.5 percent for the 12 months to January 2023 compared to 18.1 percent registered in December 2022. In addition, annual semi-durable goods (SD) inflation registered 3.5 percent in January 2023 compared to 4.5 percent registered in December 2022. Annual inflation for durable (D) goods was registered at 1.9 percent for the 12 months to January 2023 compared to 2.6 percent registered in the year ended December 2022 as shown in Table 4 below.

**Table 4: Annual National Goods Inflation for December 2022 and January 2023.**

| Description        | Weights | December 2022 | January 2023 |
|--------------------|---------|---------------|--------------|
| Headline           | 1000.00 | 10.2          | 10.4         |
| Goods              | 615.89  | 14.5          | 13.8         |
| Non-Durable (ND)   | 466.83  | 18.1          | 17.5         |
| Semi-Durables (SD) | 114.36  | 4.5           | 3.5          |
| Durables (D)       | 34.69   | 2.6           | 1.9          |

### 1.4 Monthly Inflation.

The Monthly Headline Inflation for January 2023 registered 0.2 percent drop compared to 0.1 percent rise recorded in the month of December 2022 as shown in Table 5 below. This was attributed to the monthly core inflation that registered 0.1 percent drop in January 2023 compared to 0.2 percent rise recorded in December 2022. This decrease in monthly core inflation was attributed to monthly Services inflation that dropped by 0.6 percent in January 2023 from the 0.0 percent recorded in December 2022. Specifically, passenger transport services inflation decreased by 3.0 percent in January 2023 from the 1.1 percent drop recorded in December 2022.

However, monthly other goods inflation increased by 0.3 percent in January 2023 compared to 0.5 percent rise registered in December 2022. This was mainly due to the monthly rice inflation that increased by 5.0 percent in January 2023 from the 2.8 percent drop recorded in December 2022. Sugar inflation increased by 3.4 percent in January 2023 from the 0.2 percent drop recorded in December 2022.

The monthly energy fuel and utilities inflation (EFU) registered 0.5 percent drop in January 2023 from the 1.3 percent drop registered in December 2022. This was mainly due to monthly petrol inflation that decreased by 4.3 percent in January 2023 from the 5.2 percent drop registered in December 2022. In addition, electricity inflation decreased by 1.1 percent in January 2023 from the 0.0 percent registered in December 2022.

Food crops and related items monthly inflation registered 0.4 percent drop in January 2023, from the 0.3 percent rise registered in December 2022. This was mainly due to matooke monthly inflation that registered 8.5 percent drop in January 2023 from the 10.1 percent rise recorded in December 2022. In addition, Passion fruits inflation registered 7.4 percent drop in January 2023 from the 8.8 percent rise recorded in December 2022.

**Table 5: Monthly Headline, Core, Food Crops and EFU Inflation for December 2022 and January 2023.**

| Description                     | Weights | December 2022 | January 2023 |
|---------------------------------|---------|---------------|--------------|
| Headline                        | 1000.00 | 0.1           | -0.2         |
| Core                            | 839.62  | 0.2           | -0.1         |
| Other Goods                     | 455.51  | 0.5           | 0.3          |
| Services                        | 384.11  | 0.0           | -0.6         |
| Food Crops and Related Items    | 95.10   | 0.3           | -0.4         |
| Energy Fuel and Utilities (EFU) | 65.28   | -1.3          | -0.5         |

The overall monthly consumer price indices and inflation from January 2022 to January 2023 are shown in Table 6 below.

**Table 6: Overall Monthly CPI and Rates of Inflation (Base: 2016/17=100)**

| Month          | Overall CPI | Monthly Inflation Rate |
|----------------|-------------|------------------------|
| January 2023   | 126.19      | -0.2                   |
| December 2022  | 126.38      | 0.1                    |
| November 2022  | 126.21      | 0.1                    |
| October 2022   | 126.13      | 0.8                    |
| September 2022 | 125.10      | 1.5                    |
| August 2022    | 123.24      | 1.0                    |
| July 2022      | 122.04      | 1.0                    |
| June 2022      | 120.88      | 1.0                    |
| May 2022       | 119.73      | 1.5                    |
| April 2022     | 117.98      | 1.4                    |
| March 2022     | 116.38      | 0.8                    |
| February 2022  | 115.42      | 1.0                    |
| January 2022   | 114.30      | -0.3                   |

## 1.5 Monthly Inflation by COICOP Divisions

The monthly headline inflation for January 2023 registered 0.2 percent drop compared to 0.1 percent rise recorded in the month of December 2022. This was mainly attributed to the monthly Transport Inflation that decreased by 2.0 percent in January 2023 compared to 1.1 percent drop registered in December 2022. In addition, Recreation, Sports and Culture Inflation decreased by 1.1 percent in January 2023 from 1.3 percent rise registered in December 2022. Clothing and Footwear Inflation decreased by 0.2 percent in January 2023 from 0.4 percent rise registered in December 2022. Monthly 'Furnishings, Household Equipment and Routine Household' inflation decreased by 0.3 percent in the month of January 2023 compared to the 0.1 percent drop recorded in December 2022. 'Personal care, social protection and miscellaneous goods' inflation that decreased by 0.1 percent in January 2023 compared to the 0.9 percent rise recorded in December 2022.

However, monthly Food and Non- Alcoholic Beverages Inflation increased by 0.4 percent in January 2023 from the 0.6 percent rise recorded in December 2022 as indicated in Table 7 below.

**Table 7: Monthly Changes in the Consumer Price Indices for the COICOP Divisions.**

| 13 COICOP Divisions                                      | Weight          | Monthly %<br>Change<br>November<br>2022 -<br>December<br>2022 | Monthly<br>% Change<br>December<br>2022 -<br>January<br>2023 |
|--|-----------------|---|--|
| Food and Non-Alcoholic Beverages                         | 270.54          | 0.6   | 0.4  |
| Alcoholic Beverages, Tobacco and Narcotics               | 38.8            | 0.7   | 0.2  |
| Clothing and Footwear                                    | 69.77           | 0.4   | -0.2   |
| Housing, Water, Electricity, Gas and Other Fuels         | 104.16          | -0.4  | 0.9  |
| Furnishings, Household Equipment and Routine Household   | 48.37           | -0.1  | -0.3   |
| Health   | 47.47           | 0.1   | -0.1   |
| Transport  | 104.55          | -1.1  | -2.0   |
| Information and Communication                            | 44.32           | 0.0   | 0.2  |
| Recreation, Sport and Culture                            | 49.85           | 1.3   | -1.1   |
| Education Services                                       | 57.96           | 0.0   | 0.0  |
| Restaurants and Accommodation Services                   | 87.38           | -0.3  | -0.1   |
| Insurance and Financial Services                         | 22.8            | 0.0   | -0.2   |
| Personal Care, Social Protection and Miscellaneous Goods | 54.04           | 0.9   | -0.1   |
| <b>Overall</b>   | <b>1,000.00</b> | <b>0.1</b>  | <b>-0.2</b>  |

Relative to January 2022 and January 2023, the national average retail prices of selected commodities in January 2023 are shown in Table 7 below.

**Table 7: National Average Retail Prices of Selected Commodities**

| Commodity Name | Quantity | Unit of Measure | Average Price January 2022 | Average Price December 2022 | Average Price January 2023 |
|----------------|----------|-----------------|----------------------------|-----------------------------|----------------------------|
| Rice           | 1        | Kg              | 3,495                      | 5,124                       | 5,335                      |
| Local Chicken  | 1        | Kg              | 15,533                     | 16,370                      | 18,473                     |
| Smoked Tilapia | 1        | Kg              | 29,144                     | 27,642                      | 30,147                     |
| Sugar          | 1        | Kg              | 3,302                      | 4,903                       | 5,142                      |
| Maize Flour    | 1        | Kg              | 2,193                      | 3,977                       | 3,862                      |
| Tomatoes       | 1        | Kg              | 1,770                      | 2,307                       | 2,515                      |
| Dry Beans      | 1        | Kg              | 2,679                      | 3,786                       | 3,985                      |
| Laundry soap   | 1        | Kg              | 4,915                      | 7,059                       | 6,927                      |
| Paraffin       | 1        | Litre           | 3,228                      | 4,600                       | 4,571                      |
| Diesel         | 1        | Litre           | 4,110                      | 5,505                       | 5,367                      |
| Petrol         | 1        | Litre           | 4,875                      | 5,531                       | 5,297                      |

### 1.5 Annual Headline Inflation by Income Groups and Geographical areas

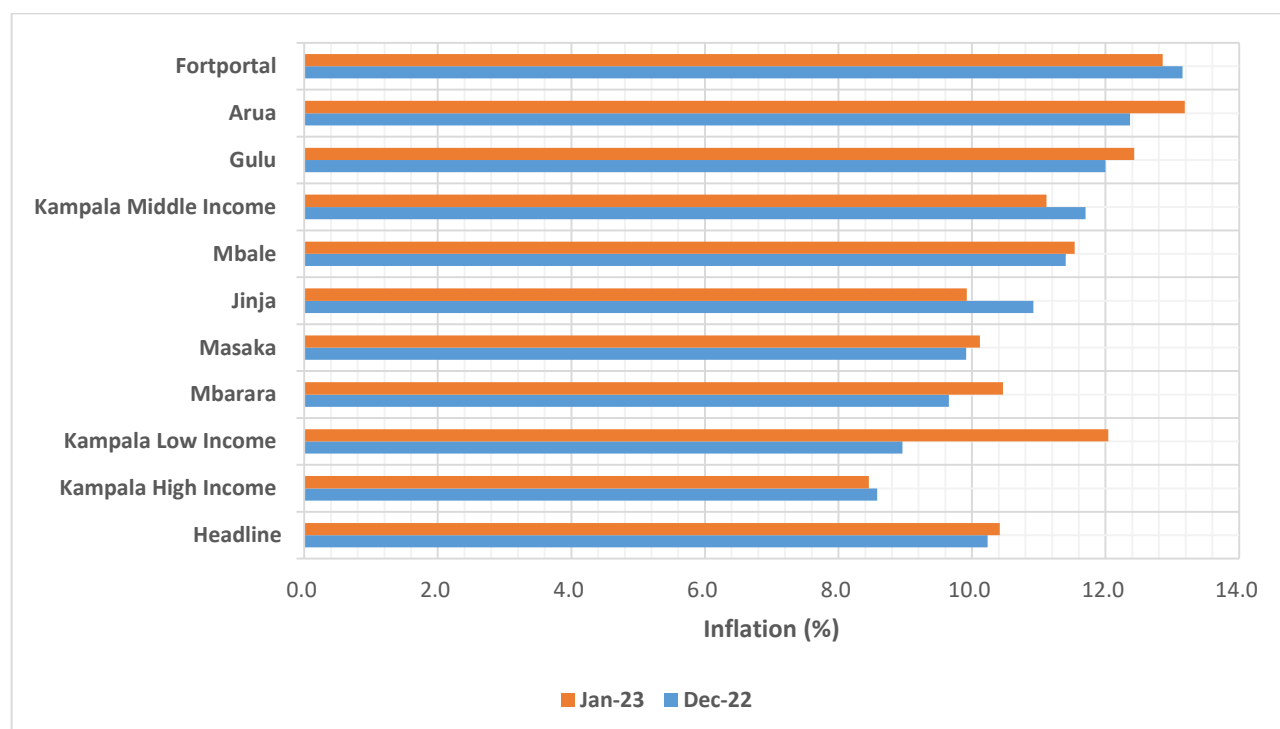
Analysis by geographical areas and income groups revealed that Arua registered the highest inflation of 13.1 percent for the 12 months to January 2023 compared to 12.4 percent recorded in December 2022. This was mainly driven by annual 'food and non-alcoholic beverages' inflation that increased to 22.7 percent in January 2023 compared to 20.9 percent registered in December 2022. Specifically, Cassava Flour 49.2 percent, Beans dry 81.2 percent, Cassava dried 38.0 percent, Laundry soap 60.0 percent, Maize flour 68.9 percent, Rice 50.7 percent and Sugar 40.7 percent. In addition, annual restaurants and accommodation services inflation increased to 14.5 percent in January 2023 compared to 14.3 percent in December 2022.

The second highest inflation was registered in Fort portal at 12.9 percent for the 12 months to January 2023 compared to 13.2 percent recorded in December 2022. This was mainly driven by annual 'food and non-alcoholic beverages' inflation that registered 26.7 percent in January 2023 compared to 25.5 percent registered in December 2022. Specifically, Cassava flour 72.0 percent, Matooke 111.6 percent, Maize flour 60.7 percent, Rice 50.0 percent, Sugar 61.9 percent and Laundry soap 62.4 percent.

In addition, annual restaurants and accommodation services inflation registered 10.2 percent in January 2023 compared to 11.1 percent in December 2022.

The least annual inflation was registered in Kampala High Income at 8.4 percent for the 12 months to January 2023 compared to 8.6 percent recorded in December 2022. This was mainly due to the annual insurance and financial services inflation that registered minus 0.4 percent in January 2023 compared to 0.0 percent registered in December 2022. In addition, annual Restaurants and accommodation services inflation was registered at 5.7 percent in January 2023 compared to 6.7 percent in December 2022.

**Figure 2: Annual Inflation by Income Groups and Geographical Areas for the 12 months to December 2022 and January 2023**



## ANNEX 1: ANNUAL INFLATION BY COICOP DIVISIONS

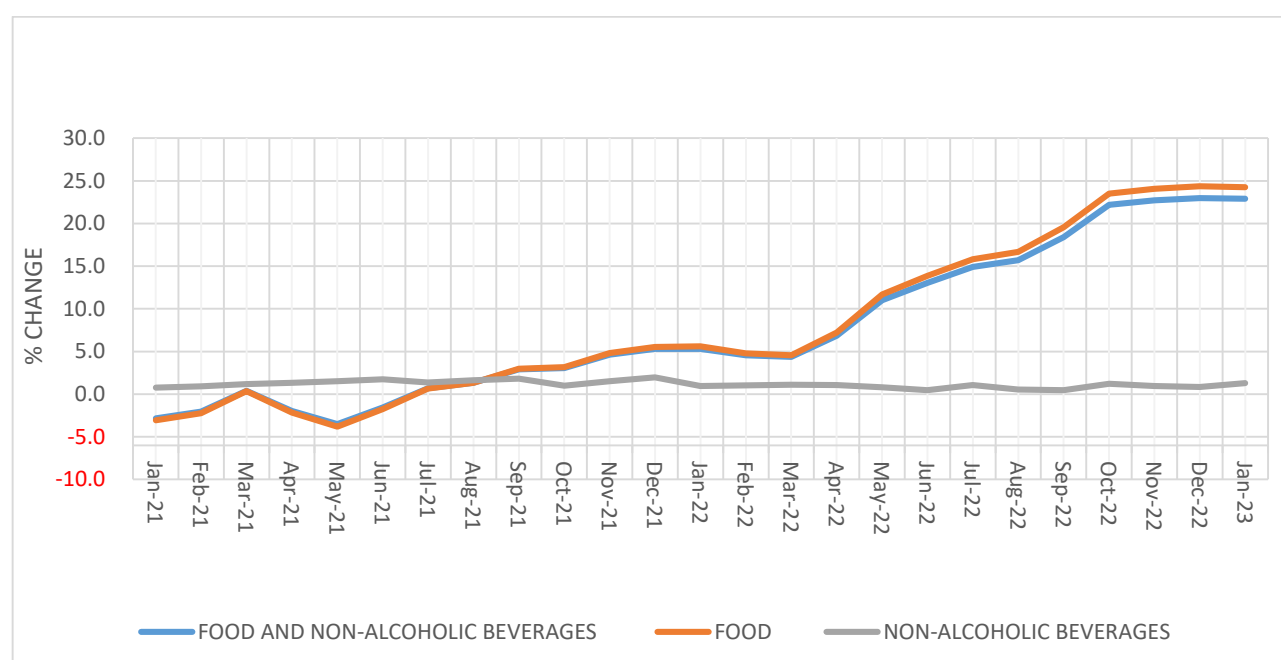
The evolution of Annual Inflation according to COICOP is described in the following paragraphs, reference is made to table 6.

### 01 Food and Non-Alcoholic Beverages

The Inflation for Food and Non-Alcoholic Beverages increased to 22.9 percent for the 12 months to January 2023 compared to 23.0 percent recorded in December 2022. The increase was mainly due to Annual Food Inflation that increased to 24.3 percent in January 2023 compared to 24.4 percent recorded in December 2022.

In addition, Non-Alcoholic Beverages Inflation increased to 1.3 percent for the 12 months to January 2023 compared to 0.8 percent recorded in December 2022. *Figure 4 shows the trends of Food and Non Alcoholic Beverages Annual Inflation from January 2021 to January 2023.*

**Figure 4: Food and Non Alcoholic Beverages Annual Inflation Trends; January 2021 – January 2023.**



### 02 Alcoholic Beverages, Tobacco & Narcotics

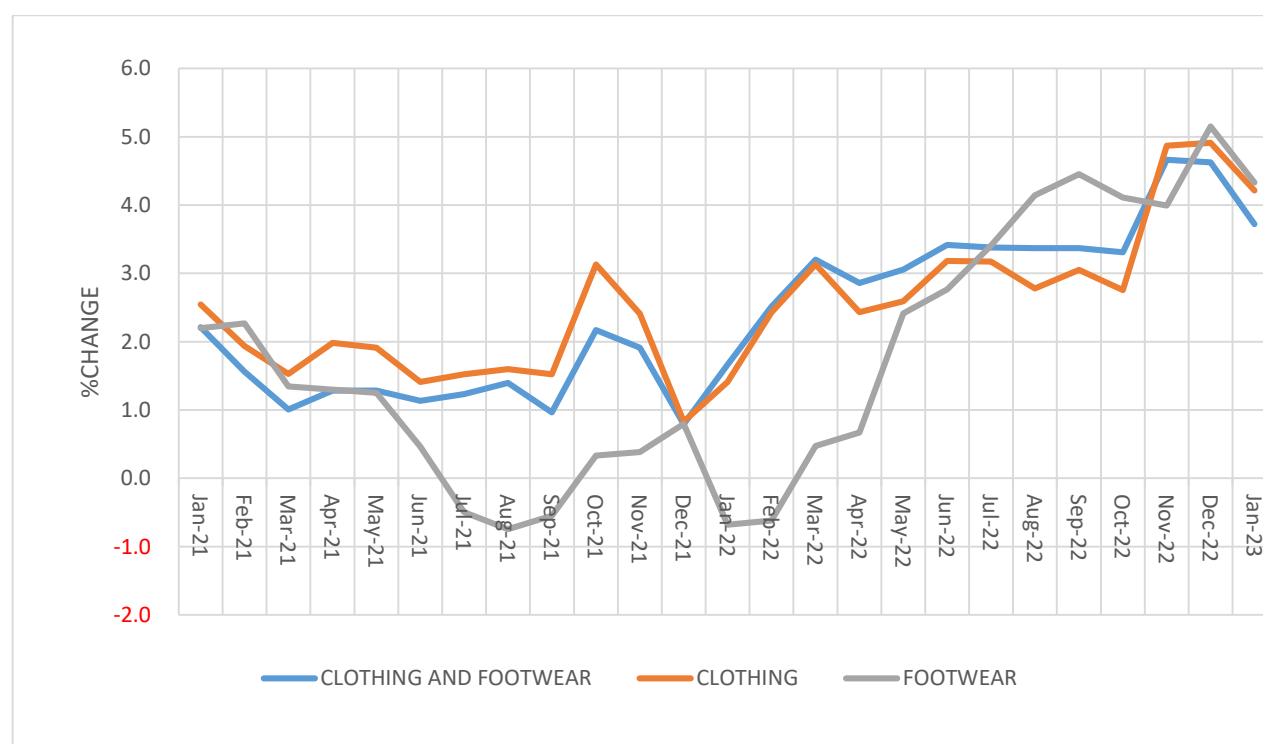
The Inflation for Alcoholic Beverages, Tobacco & Narcotics registered 8.4 percent for the 12 months to January 2023 compared to 8.0 percent registered in December 2022. This was attributed to the Annual Alcoholic Beverages Inflation that registered 9.5 percent in January 2023 compared to 9.0 percent registered in December 2022. However, Annual Tobacco Inflation registered minus 1.1 percent for the 12 months to January 2023 compared to minus 1.3 percent recorded in December 2022.

### 03 Clothing and Footwear

The Inflation for Annual Clothing and Footwear registered 3.7 percent for the 12 months to January 2023 compared to 4.6 percent recorded in December 2022. This was mainly attributed to Clothing Inflation that registered 4.2 percent in January 2023 compared to 4.9 percent recorded in December 2022.

In addition, Footwear Inflation registered 2.3 percent for the 12 months to January 2023 compared to 3.8 percent recorded in December 2022. *Figure 5 shows the trends of Clothing and Footwear Inflation from January 2021 to January 2023.*

**Figure 5: Clothing and Footwear Annual Inflation Trends; January 2021 – January 2023.**



### 04 Housing, Water, Electricity, Gas and other Fuels

Housing, Water, Electricity, Gas and Other Fuels comprises of Actual Rentals for Housing, Maintenance, Repair and Security of the Dwelling, Water Supply and Miscellaneous Services Relating to the Dwelling, Electricity, Gas and Other Fuels.

The Inflation for Housing, Water, Electricity, Gas & Other Fuels increased to 5.5 percent for the 12 months to January 2023 compared to 5.0 percent recorded in December 2022. This was mainly attributed to Annual Electricity, Gas and Other Fuels Inflation that increased to 6.4 percent for the 12 months to January 2023 compared to 6.2 percent recorded in December 2022. In addition, Annual Maintenance, Repair and Security of the Dwelling Inflation increased to 15.4 percent in January 2023 compared to 12.1 percent recorded in December 2022. Actual Rentals for Housing Inflation registered 1.9 percent for the 12 months to January 2023 compared to 1.6 percent recorded in December 2022.

However, Annual Water Supply and Miscellaneous Services Relating to the Dwelling Inflation increased to 5.1 percent for the 12 months to January 2023 the same rate recorded in December 2022.



## **05 Furnishings, Household Equipment and Routine Household Maintenance**

This Division Comprises of Furniture, Furnishings, and Loose Carpets, Household Textiles, Household Appliances, Glassware, Tableware and Household Utensils, Tools and Equipment for House & Garden, and Goods & Services for Routine Household Maintenance.

The Inflation for Furnishings, Household Equipment & Routine Household Maintenance registered 13.4 percent for the 12 months to January 2023 compared to 14.3 percent recorded in December 2022. This was mainly due to Goods & Services for Routine Household Maintenance Inflation that registered 23.3 percent in January 2023 compared to 24.6 percent in December 2022. In addition, Household Appliances Inflation registered 9.7 percent in January 2023 compared to 12.5 percent recorded in December 2022. Household Textiles Inflation registered 3.9 percent for the 12 months to January 2023 compared to 4.1 percent recorded in December 2022. Glassware, Tableware and Household Utensils Inflation registered 2.7 percent for the 12 months to January 2023 compared to 3.4 percent recorded in December 2022. 'Furniture, Furnishings, and Loose Carpets' Inflation registered 1.9 percent for the 12 months to January 2023 compared to 2.5 percent recorded in December 2022.

However, Tools and Equipment for House & Garden Inflation increased to minus 0.7 percent for the 12 months to January 2023 compared to minus 1.3 percent in December 2022.

## **06 Health**

The Health Division comprises of Medicines and Health Products, Outpatient Care Services, Inpatient Care Services and Other Health Services.

The Inflation for Health registered 1.8 percent for the 12 months to January 2023 compared to 2.2 percent registered in December 2022. This was mainly due to Annual Other Health Services Inflation that registered 1.8 percent for the 12 months to January 2023 compared to 5.0 percent recorded in December 2022.

In addition, Inpatient Care Services Inflation registered 0.5 percent for the 12 months to January 2023 compared to 0.8 percent recorded in December 2022.

Annual Medicines and Health Products Inflation registered 2.4 percent for the 12 months to January 2023 compared to 2.3 percent recorded in December 2022. Outpatient Care Services Inflation registered 1.6 percent in January 2023 compared to 1.5 recorded in December 2022.

## **07 Transport**

Transport division comprises of Purchase of vehicles, Operation of Personal Transport Equipment and Passenger Transport Services.

The Inflation for Transport increased to 4.9 percent for the 12 months to January 2023 compared to 1.5 percent recorded in December 2022. This was mainly attributed to Annual Passenger Transport Services Inflation increased to 4.2 percent for the 12 months to January 2023 compared to minus 6.9 percent registered in December 2022.

However, Annual Operation of Personal Transport Equipment Inflation that registered 7.2 percent in January 2023 compared to 12.0 percent recorded in December 2022. Annual Purchase of vehicles Inflation registered 1.2 percent in January 2023 compared to 2.3 percent recorded in December 2022.

## **08 Information and Communication**

Information and Communication includes Information and Communication Equipment, and Information and Communication Services.

The Annual Inflation for Information and Communication increased to minus 0.8 percent for the 12 months to January 2023 compared to minus 0.9 percent recorded in December 2022. This was due to the Annual Information and Communication Equipment Inflation increased to 3.3 percent for the 12 months to January 2023 compared to 3.5 percent in December 2022.

However, Annual Information and Communication Services Inflation that registered minus 2.5 percent in January 2023 compared to minus 2.9 percent recorded in December 2022.

## **09 Recreation, Sport and Culture**

Recreation, Sport and Culture comprises of Other Recreational Goods, Gardens and Pets, Recreational Services, Cultural Services, Newspapers, Books & Stationery and Package Holidays.

The Annual Inflation for Recreation, Sport and Culture registered 5.1 percent for the 12 months to January 2023 compared to 6.8 percent recorded in December 2022. This was mainly due to Annual Newspapers, Books & Stationery Inflation increased to 7.4 percent for the 12 months to January 2023 compared to 8.2 percent recorded in December 2022.

In addition, Annual Cultural Services Inflation registered 4.5 percent in January 2023 compared to 7.3 percent recorded in December 2022. Annual Gardens and Pets Inflation registered 2.8 percent for the 12 months to January 2023 compared to 4.0 percent recorded in December 2022.

However, Annual Recreational Services Inflation that registered 6.1 percent for the 12 months to January 2023 the same rate recorded in December 2022. Annual Other Recreational Goods Inflation registered 0.7 percent for the 12 months the same rate recorded in December 2022 and Annual Package Holidays Inflation registered minus 8.4 percent for the 12 months to January 2023 the same rate recorded in December 2022.

## **10 Education Services**

Education Services comprises of Early Childhood and Primary Education, Secondary Education, Post-secondary non-tertiary education, Tertiary Education and Education not Defined by level.

The Annual Inflation for Education Services registered 12.8 percent for the 12 months to January 2023 the same rate recorded in December 2022. This was mainly due to Annual 'Early Childhood and Primary Education' Inflation, Annual Secondary Education Inflation and Annual Post-secondary non-tertiary education Inflation that registered to 17.6 percent, 12.9 percent and 15.7 percent respectively in January 2023 the same rates recorded in December 2022.

In addition, Annual Tertiary Education Inflation and Annual Education not Defined by level registered 0.0 percent respectively in January 2023 the same rate recorded in December 2022.

## **11 Restaurants and Accommodation Services**

Restaurants and Accommodation Services comprises of Food and Beverage Serving Services and Accommodation Services.

Annual Inflation for Restaurants and Accommodation Services registered 6.9 percent for the 12 months to January 2023 compared to 8.1 percent recorded in December 2022. This was mainly due to Annual Food and Beverage Serving Services Inflation that registered 7.2 percent in January 2023 compared to 8.9 percent recorded in December 2022.

In addition, Annual Accommodation services Inflation registered 6.1 percent for the 12 months to January 2023 compared to 6.2 percent recorded in December 2022.

## **12 Insurance and Financial Services**

Insurance and Financial Services comprises of Insurance and Financial Services.

The Annual Insurance and Financial Services Inflation for the 12 months to January 2023 registered minus 0.3 percent in January 2023 compared to minus 0.1 registered in December 2022. This was due to Annual Financial Services Inflation registered minus 0.5 percent in January 2023 compared to minus 0.3 percent recorded in December 2022.

However, Annual Insurance Services Inflation that registered 1.9 percent for the 12 months to January 2023 the same rate recorded in December 2022.

## **13 Personal Care, Social Protection and Miscellaneous Goods**

Personal Care, Social Protection and Miscellaneous Goods comprises of Personal Care, Personal Effects n.e.c, Social Protection and Other services n.e.c.

The Annual Personal Care, Social Protection and Miscellaneous Goods Inflation for the 12 months to January 2023 registered 7.9 percent for the 12 months to January 2023 compared to 9.3 percent recorded in December 2022. This was mainly due to Annual Personal Care Inflation that registered 9.7 percent for the 12 months to January 2023 compared to 11.1 percent recorded in December 2022.

In addition, Annual Personal Effects n.e.c Inflation registered 7.3 percent for the 12 months to January 2023 compared to 10.7 percent recorded in December 2022.

However, Annual Other Services n.e.c Inflation increased to 0.4 percent for the 12 months to January 2023 compared to 0.0 percent recorded in December 2022.

Annual Social Protection Inflation registered 15.2 percent respectively in January 2023 the same rate recorded in December 2022.

## ANNEX 2: MONTHLY INFLATION BY COICOP DIVISIONS

The evolution of Monthly Inflation according to COICOP is described in the following paragraphs, reference is made to table 4.

### 01 Food and Non-Alcoholic Beverages

The Monthly Inflation for Food and Non-alcoholic Beverages recorded 0.4 percent for the month of January 2023 compared to 0.6 percent rise registered in December 2022 . This was mainly due to the monthly Food Inflation that increased by 0.4 percent for the month of January 2023 compared to 0.6 percent rise recorded in December 2022.

However, Non-Alcoholic Beverages Inflation decreased by 0.4 percent for the month of January 2023 compared to 0.3 percent rise recorded in December 2022.

### 02 Alcoholic Beverages, Tobacco & Narcotics

The Monthly Inflation for Alcoholic Beverages, Tobacco & Narcotics increased by 0.2 percent during the month of January 2023 compared to 0.7 percent rise recorded during the month of December 2022. This was due to Alcoholic beverages Inflation that increased by 0.3 percent for the month of January 2023 compared to the 0.8 percent rise recorded in December 2022.

However, Tobacco Inflation registered 0.0 percent for the month of January 2023 compared to the 0.4 percent drop recorded for the month of December 2022.

### 03 Clothing and Footwear

The Monthly Inflation for Clothing and Footwear decreased by 0.2 percent for the month of January 2023 the compared to 0.4 percent rise recorded in December 2022. This was due to Clothing Inflation that decreased by 0.3 percent for the month of January 2023 from the 0.5 percent rise recorded in December 2022.

However, Footwear Inflation recorded 0.0 percent for the month of January 2023 compared to 0.1 percent rise recorded in December 2022 .

### 04 Housing, Water, Electricity, Gas and other Fuels

The Monthly Inflation for Housing, Water, Electricity, Gas & Other fuels increased by 0.9 percent for the month of January 2023 from the 0.4 percent drop recorded in December 2022. This was mainly due to Electricity, Gas and Other Fuels Inflation increased by 1.3 percent for the month of January 2023 from the 0.4 percent drop recorded for the month of December 2022.

In addition, Maintenance, Repair And Security Of The Dwelling Inflation increased by 2.4 percent for the month of January 2023 from to the 2.7 percent drop recorded for the month of December 2022. Actual Rentals for Housing inflation registered 0.4 percent rise for the month of January 2023 from 0.0 percent recorded for the month of December 2022.

However, Water Supply and Miscellaneous Services Inflation recorded 0.1 percent drop for the month of January 2023 compared to the 0.5 percent registered for the month of December 2022.

## **05 Furnishings, Household Equipment and Routine Household Maintenance**

The Monthly Inflation for Furnishings, Household Equipment & Routine Household Maintenance decreased by 0.3 percent for the month of January 2023 compared to the 0.1 percent drop recorded for the month of December 2022. This was mainly due to Furniture, Furnishings, and Loose Carpets Inflation decreased by 0.1 percent for the month of January 2023 compared to 0.2 percent rise recorded for the month of December 2022.

In addition, Glassware, Tableware and Household Utensils Inflation decreased by 0.7 percent for the month of January 2023 from the 0.1 percent rise recorded for the month of December 2022. Household Appliances Inflation that decreased by 2.4 percent for the month of January 2023 compared to the 0.7 percent rise recorded for the month of December 2022.

However, Tools and Equipment for House and Garden Inflation increased by 0.1 percent for the month of January 2023 compared to the 0.4 percent rise recorded for the month of December 2022.

Household Textiles Inflation increased by 0.1 percent for the month of January 2023 the same rate recorded for the month of December 2022.

Goods and Services for Routine Household Maintenance Household Appliances Inflation Household Appliances Inflation registered 0.0 percent for the month of January 2023 compared to the 0.4 percent drop recorded for the month of December 2022.

## **06 Health**

The Monthly Inflation for Health decreased by 0.1 percent for the month of January 2023 compared to the 0.1 percent rise recorded for the month of December 2022 . This was mainly due to Other Health Services Inflation that decreased by 1.1 percent for the month of January 2023 compared to the 0.3 percent rise recorded for the month of December 2022.

However, Medicines And Health Products Inflation increased by 0.2 percent for the month of January 2023 compared to 0.0 percent recorded for the month of December 2022.

Outpatient Care Services Inflation recorded 0.0 percent for the month of January 2023 the same rate recorded for the month of December 2022. Inpatient Care Services Inflation registered 0.0 percent for the month of January 2023 the same rate recorded for the month of December 2022.

## **07 Transport**

Transport Inflation decreased by 2.0 percent for the month of January 2023 compared to the 1.1 percent drop recorded for the month of December 2022. This was due to Purchase of vehicles Inflation decreased by 0.3 percent for the month of January 2023 compared to 0.0 percent recorded for the month of December 2022.

In addition, Operation Of Personal Transport Equipment decreased by 1.7 percent for the month of January 2023 from 1.4 percent drop registered during the month of December 2022. Passenger Transport Services Inflation decreased by 3.0 percent for the month of January 2023 from the 1.1 percent drop recorded during the month of December 2022

## **08 Information and Communication**

The Monthly Inflation for Information and Communication increased by 0.2 percent for the month of January 2023 compared to 0.0 percent recorded for the month of December 2022. This was mainly due to Information and Communication Services Inflation that increased by 0.4 percent for the month of January 2023 compared to the 0.0 percent recorded during the month of December 2022.

However, Information and Communication Equipment Inflation decreased by 0.1 percent for the month of January 2023 compared to the 0.1 percent rise recorded for the month of December 2022.

## **09 Recreation, Sport and Culture**

Monthly Recreation, Sport and Culture Inflation decreased by 1.1 percent for the month of January 2023 compared to the 1.3 percent rise recorded during the month of December 2022. This was mainly due to, 'Newspapers, Books & Stationery' Inflation decreased by 0.7 percent for the month of January 2023 from 0.6 percent rise recorded for the month of December 2022. Cultural Services Inflation recorded 1.8 percent drop for the month of January 2023 compared to the 2.2 percent rise recorded for the month of December 2022.

However, Other Recreational Goods Inflation recorded 0.0 percent for the month of January 2023 the the same rate registered for the month of December 2022.

Gardens and Pets Inflation registered 0.0 percent for the month of January 2023 the same rate recorded for the month of December 2022.

Recreational services Inflation registered 0.0 percent for the month of January 2023 the same rate recorded during the month of December 2022.

Package Holidays Inflation registered 0.0 percent for the month of January 2023 the same rate recorded during the month of December 2022 .

## **10 Education Services**

Monthly Inflation for Education Services registered 0.0 percent for the month of January 2023 the same rate registered for the month of December 2022. Early Childhood and Primary Education Inflation recorded 0.0 percent for the month of January 2023 the same rate registered for the month of December 2022.

Secondary Education Inflation registered 0.0 percent for the month of January 2023 the same rate recorded for the month of December 2022. Post-secondary and non-tertiary education Inflation registered 0.0 percent for the month of January 2023 the same rate recorded for the month of December 2022.

In addition, Tertiary education Inflation recorded 0.0 percent for the the month of January 2023 the same rate recorded for the month of December 2022. Education not Defined by level inflation also registered 0.0 percent for the month of January 2023 the same rate recorded for the month of December 2022.

### **11 Restaurants and Accommodation Services**

The Monthly Inflation for Restaurants and Accommodation Services decreased by 0.1 percent for the month of January 2023 compared to the 0.3 percent drop recorded for the month of December 2022.

This was mainly due to Food and Beverage Serving Services Inflation that declined by 0.2 percent for the month of January 2023 from the 0.4 percent drop registered for the month of December 2022.

However, Accommodation Services Inflation increased by 0.1 percent for the month of January 2023 from 0.0 percent recorded for the month of December 2022.

### **12 Insurance and Financial Services**

Insurance and Financial Services Inflation decreased by 0.1 percent for the month of January 2023 compared to 0.0 percent recorded for the month of December 2022. This was due to Financial Services Inflation that registered 0.2 percent drop for the month of January 2023 compared to 0.0 percent recorded during the month of December 2022.

### **13 Personal Care, Social Protection and Miscellaneous Goods**

Personal Care, Social Protection and Miscellaneous Goods Inflation registered 0.0 percent during the month of January 2023 compared to the 0.9 percent rise recorded for the month of December 2022. This was mainly due to Personal care Inflation that decreased by 0.6 percent for the month of January 2023 compared to 0.6 percent rise recorded for the month of December 2022.

However, Personal Effects n.e.c Inflation also increased by 1.8 percent during the month of January 2023 compared to the 2.7 percent rise recorded for the month of December 2022.

Other services n.e.c Inflation increased by 0.4 percent for the month of January 2023 compared to the 0.2 percent rise recorded for the month of December 2022. Social Protection Inflation registered 0.0 percent for the month of January 2023 the same rate recorded for the month of December 2022.



**TABLE 6: UGANDA CONSUMER PRICE INDEX (CPI) AND INFLATION FOR CORE, FOOD CROPS, & EFU: (2016/17) = 100.**

EFU = Energy Fuel and Utilities

| GROUP                  |         | Core   | Food Crops | EFU    | Headline | Core             | Food Crops | EFU  | Headline | Core            | Food Crops | EFU  | Headline |
|------------------------|---------|--------|------------|--------|----------|------------------|------------|------|----------|-----------------|------------|------|----------|
| Weights                |         | 839.62 | 95.10      | 65.28  | 1000.00  | Monthly % Change |            |      |          | Annual % Change |            |      |          |
| <b>Financial Years</b> |         |        |            |        |          |                  |            |      |          |                 |            |      |          |
|                        | 2018/19 | 106.68 | 98.46      | 117.08 | 106.57   |                  |            |      |          | 3.0             | -5.0       | 8.8  | 2.6      |
|                        | 2019/20 | 109.08 | 102.16     | 118.86 | 109.06   |                  |            |      |          | 2.3             | 3.7        | 1.5  | 2.3      |
|                        | 2020/21 | 112.89 | 97.80      | 117.74 | 111.77   |                  |            |      |          | 3.5             | -4.3       | -0.9 | 2.5      |
|                        | 2021/22 | 116.49 | 102.11     | 123.88 | 115.61   |                  |            |      |          | 3.2             | 4.4        | 5.2  | 3.4      |
| <b>Calendar Years</b>  |         |        |            |        |          |                  |            |      |          |                 |            |      |          |
|                        | 2019    | 107.68 | 100.27     | 117.48 | 107.61   |                  |            |      |          | 2.4             | -1.4       | 3.0  | 2.1      |
|                        | 2020    | 111.16 | 99.72      | 118.96 | 110.58   |                  |            |      |          | 3.2             | -0.5       | 1.3  | 2.8      |
|                        | 2021    | 114.23 | 98.82      | 118.10 | 113.02   |                  |            |      |          | 2.8             | -0.9       | -0.7 | 2.2      |
|                        | 2022    | 121.07 | 113.58     | 133.16 | 121.15   |                  |            |      |          | 6.0             | 14.9       | 12.8 | 7.2      |
| <b>2020</b>            |         |        |            |        |          |                  |            |      |          |                 |            |      |          |
|                        | Mar     | 109.41 | 100.77     | 118.92 | 109.21   | 0.1              | -2.4       | -0.2 | -0.1     | 1.8             | 4.2        | 1.8  | 2.0      |
|                        | Apr     | 110.20 | 103.99     | 119.09 | 110.19   | 0.7              | 3.2        | 0.1  | 0.9      | 2.8             | 1.0        | 2.1  | 2.6      |
|                        | May     | 110.39 | 106.48     | 119.02 | 110.58   | 0.2              | 2.4        | -0.1 | 0.4      | 2.9             | 0.3        | 2.3  | 2.7      |
|                        | Jun     | 111.39 | 101.13     | 119.56 | 110.95   | 0.9              | -5.0       | 0.5  | 0.3      | 3.7             | -0.7       | 5.1  | 3.4      |
|                        | Jul     | 111.86 | 95.37      | 118.75 | 110.74   | 0.4              | -5.7       | -0.7 | -0.2     | 3.9             | -3.2       | 2.8  | 3.2      |
|                        | Aug     | 112.02 | 96.72      | 118.62 | 111.00   | 0.1              | 1.4        | -0.1 | 0.2      | 3.6             | -1.9       | 1.8  | 3.0      |
|                        | Sep     | 112.36 | 97.20      | 118.73 | 111.34   | 0.3              | 0.5        | 0.1  | 0.3      | 3.7             | -5.0       | 0.2  | 2.7      |
|                        | Oct     | 112.63 | 98.90      | 120.11 | 111.81   | 0.2              | 1.8        | 1.2  | 0.4      | 4.1             | -4.0       | -0.6 | 3.0      |
|                        | Nov     | 112.48 | 95.32      | 118.54 | 111.24   | -0.1             | -3.6       | -1.3 | -0.5     | 3.9             | -7.4       | -1.0 | 2.5      |
|                        | Dec     | 112.83 | 95.14      | 117.36 | 111.44   | 0.3              | -0.2       | -1.0 | 0.2      | 3.9             | -7.2       | -2.0 | 2.5      |
| <b>2021</b>            |         |        |            |        |          |                  |            |      |          |                 |            |      |          |
|                        | Jan     | 112.72 | 95.34      | 116.39 | 111.31   | -0.1             | 0.2        | -0.8 | -0.1     | 3.4             | -6.9       | -2.7 | 2.0      |
|                        | Feb     | 112.98 | 98.02      | 117.35 | 111.85   | 0.2              | 2.8        | 0.8  | 0.5      | 3.4             | -5.0       | -1.5 | 2.3      |
|                        | Mar     | 113.16 | 100.47     | 116.53 | 112.17   | 0.2              | 2.5        | -0.7 | 0.3      | 3.4             | -0.3       | -2.0 | 2.7      |
|                        | Apr     | 113.36 | 102.35     | 116.20 | 112.50   | 0.2              | 1.9        | -0.3 | 0.3      | 2.9             | -1.6       | -2.4 | 2.1      |
|                        | May     | 113.78 | 100.43     | 116.29 | 112.68   | 0.4              | -1.9       | 0.1  | 0.2      | 3.1             | -5.7       | -2.3 | 1.9      |
|                        | Jun     | 114.44 | 98.35      | 118.00 | 113.14   | 0.6              | -2.1       | 1.5  | 0.4      | 2.7             | -2.8       | -1.3 | 2.0      |
|                        | Jul     | 114.66 | 96.19      | 117.68 | 113.10   | 0.2              | -2.2       | -0.3 | 0.0      | 2.5             | 0.9        | -0.9 | 2.1      |
|                        | Aug     | 114.47 | 97.25      | 117.98 | 113.06   | -0.2             | 1.1        | 0.3  | 0.0      | 2.2             | 0.5        | -0.5 | 1.9      |
|                        | Sep     | 114.85 | 100.30     | 118.99 | 113.74   | 0.3              | 3.1        | 0.9  | 0.6      | 2.2             | 3.2        | 0.2  | 2.2      |
|                        | Oct     | 114.98 | 100.60     | 119.84 | 113.93   | 0.1              | 0.3        | 0.7  | 0.2      | 2.1             | 1.7        | -0.2 | 1.9      |
|                        | Nov     | 115.35 | 98.73      | 120.96 | 114.13   | 0.3              | -1.9       | 0.9  | 0.2      | 2.6             | 3.6        | 2.0  | 2.6      |
|                        | Dec     | 116.06 | 97.84      | 121.05 | 114.65   | 0.6              | -0.9       | 0.1  | 0.5      | 2.9             | 2.8        | 3.2  | 2.9      |
| <b>2022</b>            |         |        |            |        |          |                  |            |      |          |                 |            |      |          |
|                        | Jan     | 115.30 | 98.88      | 123.92 | 114.30   | -0.7             | 1.1        | 2.4  | -0.3     | 2.3             | 3.7        | 6.5  | 2.7      |
|                        | Feb     | 116.52 | 98.68      | 125.61 | 115.42   | 1.1              | -0.2       | 1.4  | 1.0      | 3.1             | 0.7        | 7.0  | 3.2      |
|                        | Mar     | 117.19 | 102.33     | 126.43 | 116.38   | 0.6              | 3.7        | 0.7  | 0.8      | 3.6             | 1.9        | 8.5  | 3.7      |
|                        | April   | 118.26 | 107.82     | 129.17 | 117.98   | 0.9              | 5.4        | 2.2  | 1.4      | 4.3             | 5.4        | 11.2 | 4.9      |
|                        | May     | 119.55 | 114.10     | 130.21 | 119.73   | 1.1              | 5.8        | 0.8  | 1.5      | 5.1             | 13.6       | 12.0 | 6.3      |
|                        | June    | 120.75 | 112.56     | 134.74 | 120.88   | 1.0              | -1.4       | 3.5  | 1.0      | 5.5             | 14.5       | 14.2 | 6.8      |
|                        | July    | 121.94 | 112.01     | 137.94 | 122.04   | 1.0              | -0.5       | 2.4  | 1.0      | 6.3             | 16.4       | 17.2 | 7.9      |
|                        | Aug     | 122.74 | 115.50     | 141.08 | 123.24   | 0.7              | 3.1        | 2.3  | 1.0      | 7.2             | 18.8       | 19.6 | 9.0      |
|                        | Sep     | 124.21 | 121.95     | 141.22 | 125.10   | 1.2              | 5.6        | 0.1  | 1.5      | 8.1             | 21.6       | 18.7 | 10.0     |
|                        | Oct     | 125.19 | 126.31     | 138.01 | 126.13   | 0.8              | 3.6        | -2.3 | 0.8      | 8.9             | 25.6       | 15.2 | 10.7     |
|                        | Nov     | 125.48 | 126.20     | 135.74 | 126.21   | 0.2              | -0.1       | -1.6 | 0.1      | 8.8             | 27.8       | 12.2 | 10.6     |
|                        | Dec     | 125.77 | 126.62     | 133.92 | 126.38   | 0.2              | 0.3        | -1.3 | 0.1      | 8.4             | 29.4       | 10.6 | 10.2     |
| <b>2023</b>            |         |        |            |        |          |                  |            |      |          |                 |            |      |          |
|                        | Jan     | 125.64 | 126.15     | 133.32 | 126.19   | -0.1             | -0.4       | -0.5 | -0.2     | 9.0             | 27.6       | 7.6  | 10.4     |



**TABLE 7: ENERGY FUEL AND UTILITIES (EFU) INDEX, ANNUAL AND MONTHLY % CHANGES, (2016/17) = 100.**

*Note: Liquid Energy Fuels (LEF) is a component of Petrol, Diesel, Kerosene, and Liquefied gas.*

|   | Weights      | Aug-22        | Sep-22        | Oct-22        | Nov-22        | Dec-22        | Jan-23        |
|---|--------------|---------------|---------------|---------------|---------------|---------------|---------------|
| <b>Energy Fuel and Utilities (EFU)</b>                  | <b>65.28</b> | <b>141.08</b> | <b>141.22</b> | <b>138.01</b> | <b>135.74</b> | <b>133.92</b> | <b>133.32</b> |
| Diesel  | 2.89         | 206.52        | 204.16        | 192.66        | 186.85        | 184.09        | 179.48        |
| Petrol  | 11.54        | 193.56        | 192.21        | 181.23        | 170.78        | 161.96        | 155.00        |
| Electricity   | 12.26        | 114.11        | 114.11        | 103.69        | 103.69        | 103.69        | 102.58        |
| Liquefied gas: propane                                  | 4.12         | 108.55        | 101.67        | 101.54        | 101.43        | 101.43        | 101.40        |
| Kerosene/Paraffin                                       | 2.57         | 171.76        | 173.52        | 172.65        | 171.69        | 174.28        | 174.42        |
| Firewood  | 5.27         | 127.57        | 124.96        | 143.49        | 139.03        | 134.00        | 139.33        |
| Charcoal  | 10.03        | 146.80        | 153.68        | 151.39        | 152.94        | 153.05        | 157.23        |
| Other solid fuels (ND)                                  | 0.28         | 186.75        | 186.75        | 186.75        | 186.75        | 186.75        | 186.75        |
| Water charges - NWSC                                    | 12.80        | 119.52        | 119.52        | 119.52        | 119.52        | 119.52        | 119.52        |
| Water Charges - Other Sources                           | 3.52         | 103.40        | 103.40        | 105.25        | 105.25        | 108.12        | 107.41        |
| <b>Liquid Energy Fuels (LEF)</b>                        | <b>21.13</b> | <b>176.10</b> | <b>173.92</b> | <b>166.21</b> | <b>159.57</b> | <b>154.68</b> | <b>150.26</b> |
| Monthly % Changes                                       |              | 3.2           | -1.2          | -4.4          | -4.0          | -3.1          | -2.9          |
| Annual % Changes  |              | 54.9          | 50.6          | 42.1          | 32.7          | 24.8          | 14.8          |
| <b>Energy Fuel and Utilities (EFU) -Annual % Change</b> |              | <b>19.6</b>   | <b>18.7</b>   | <b>15.2</b>   | <b>12.2</b>   | <b>10.6</b>   | <b>7.6</b>    |
| Diesel  |              | 69.7          | 63.0          | 52.1          | 42.2          | 36.1          | 30.5          |
| Petrol  |              | 59.4          | 55.3          | 45.6          | 33.5          | 22.0          | 7.1           |
| Electricity   |              | 0.0           | 0.0           | -9.1          | -9.1          | -9.1          | -10.1         |
| Liquefied gas: propane                                  |              | 27.3          | 19.3          | 12.9          | 9.2           | 7.9           | 8.1           |
| Kerosene/Paraffin                                       |              | 48.8          | 49.7          | 49.0          | 46.5          | 45.4          | 44.2          |
| Firewood  |              | 4.9           | 0.4           | 15.5          | 9.7           | 7.5           | 6.5           |
| Charcoal  |              | 4.8           | 8.7           | 5.2           | 6.8           | 12.2          | 14.3          |
| Other solid fuels (ND)                                  |              | 0.0           | 0.0           | 0.0           | 0.0           | 0.0           | 0.0           |
| Water charges - NWSC                                    |              | 5.8           | 5.8           | 5.8           | 5.8           | 5.8           | 5.8           |
| Water Charges - Other Sources                           |              | 1.6           | 1.6           | 3.4           | 4.5           | 5.2           | 5.5           |
| <b>EFU components Monthly % Change</b>                  |              | <b>2.3</b>    | <b>0.1</b>    | <b>-2.3</b>   | <b>-1.6</b>   | <b>-1.3</b>   | <b>-0.5</b>   |
| Diesel  |              | 1.6           | -1.1          | -5.6          | -3.0          | -1.5          | -2.5          |
| Petrol  |              | 4.5           | -0.7          | -5.7          | -5.8          | -5.2          | -4.3          |
| Electricity   |              | 0.0           | 0.0           | -9.1          | 0.0           | 0.0           | -1.1          |
| Liquefied gas: propane                                  |              | -1.9          | -6.3          | -0.1          | -0.1          | 0.0           | -0.0          |
| Kerosene/Paraffin                                       |              | 4.0           | 1.0           | -0.5          | -0.6          | 1.5           | 0.1           |
| Firewood  |              | 4.3           | -2.0          | 14.8          | -3.1          | -3.6          | 4.0           |
| Charcoal  |              | 4.1           | 4.7           | -1.5          | 1.0           | 0.1           | 2.7           |
| Other solid fuels (ND)                                  |              | 0.0           | 0.0           | 0.0           | 0.0           | 0.0           | 0.0           |
| Water charges - NWSC                                    |              | 0.0           | 0.0           | 0.0           | 0.0           | 0.0           | 0.0           |
| Water Charges - Other Sources                           |              | 1.6           | 0.0           | 1.8           | 0.0           | 2.7           | -0.7          |

**TABLE 8: UGANDA ANNUAL INFLATION BY COICOP DIVISIONS (JANUARY 2021 – JANUARY 2023).**

| Div. | PARTICULARS  | CY<br>2021 | CY<br>2022 | FY<br>2020/21 | FY<br>2021/22 | Jan-22     | Feb-22     | Mar-22     | Apr-22     | May-22     | Jun-22     | Jul-22     | Aug-22     | Sep-22      | Oct-22      | Nov-22      | Dec-22      | Jan-23      |
|------|--|------------|------------|---------------|---------------|------------|------------|------------|------------|------------|------------|------------|------------|-------------|-------------|-------------|-------------|-------------|
|      | <b>Headline</b>  | <b>2.2</b> | <b>7.2</b> | <b>2.5</b>    | <b>3.4</b>    | <b>2.7</b> | <b>3.2</b> | <b>3.7</b> | <b>4.9</b> | <b>6.3</b> | <b>6.8</b> | <b>7.9</b> | <b>9.0</b> | <b>10.0</b> | <b>10.7</b> | <b>10.6</b> | <b>10.2</b> | <b>10.4</b> |
| 01   | Food and Non-Alcoholic Beverages                         | 0.5        | 13.6       | -1.1          | 5.3           | 5.3        | 4.5        | 4.4        | 6.9        | 11.0       | 13.0       | 14.9       | 15.7       | 18.4        | 22.2        | 22.7        | 23.0        | 22.9        |
| 02   | Alcoholic Beverages, Tobacco and Narcotics               | 1.3        | 5.0        | 1.8           | 1.4           | 1.2        | 1.0        | 1.1        | 1.5        | 2.3        | 6.6        | 6.6        | 7.0        | 7.7         | 8.7         | 8.7         | 8.0         | 8.4         |
| 03   | Clothing and Footwear                                    | 1.4        | 3.3        | 1.5           | 2.1           | 1.7        | 2.5        | 3.2        | 2.9        | 3.1        | 3.4        | 3.4        | 3.4        | 3.4         | 3.3         | 4.7         | 4.6         | 3.7         |
| 04   | Housing, Water, Electricity, Gas and Other Fuels         | -0.8       | 4.2        | 0.0           | 1.3           | 1.1        | 1.1        | 1.9        | 4.5        | 4.4        | 4.9        | 5.2        | 6.2        | 6.1         | 5.0         | 4.9         | 5.0         | 5.5         |
| 05   | Furnishings, Household Equipment and Routine Household   | 2.0        | 14.5       | 1.0           | 8.3           | 5.8        | 9.6        | 13.8       | 16.5       | 17.3       | 16.7       | 17.1       | 16.2       | 16.2        | 15.1        | 15.1        | 14.3        | 13.4        |
| 06   | Health   | 5.2        | 2.7        | 4.2           | 4.0           | 5.8        | 2.2        | 2.1        | 1.9        | 2.1        | 2.1        | 2.8        | 3.3        | 3.0         | 3.0         | 2.0         | 2.2         | 1.8         |
| 07   | Transport  | 11.8       | 3.9        | 18.0          | 3.7           | 0.2        | 0.6        | 1.8        | 2.3        | 4.4        | 1.7        | 4.6        | 8.7        | 8.8         | 7.5         | 5.1         | 1.5         | 4.9         |
| 08   | Information and Communication                            | -0.1       | -1.6       | 1.1           | -1.6          | -0.8       | -1.4       | -2.4       | -2.4       | -2.7       | -2.5       | -1.3       | -1.2       | -1.3        | -0.8        | -1.0        | -0.9        | -0.8        |
| 09   | Recreation, Sport and Culture                            | 0.2        | 4.1        | 1.7           | 0.9           | 0.1        | 0.6        | 1.6        | 2.9        | 3.3        | 4.0        | 5.0        | 6.4        | 6.6         | 5.7         | 6.0         | 6.8         | 5.1         |
| 10   | Education Services                                       | 0.4        | 9.5        | 0.4           | 4.0           | 0.6        | 9.0        | 9.0        | 9.0        | 8.4        | 8.9        | 8.9        | 8.9        | 12.8        | 12.8        | 12.8        | 12.8        | 12.8        |
| 11   | Restaurants and Accommodation Services                   | 0.9        | 5.8        | 0.3           | 2.9           | 2.3        | 3.2        | 4.4        | 5.0        | 4.3        | 6.1        | 5.9        | 6.8        | 7.5         | 8.0         | 7.5         | 8.1         | 6.9         |
| 12   | Insurance and Financial Services                         | 0.1        | 1.4        | 0.0           | 2.2           | 2.5        | 2.5        | 2.5        | 2.4        | 2.8        | 2.5        | 1.2        | 1.2        | -0.1        | -0.1        | -0.1        | -0.1        | -0.3        |
| 13   | Personal Care, Social Protection and Miscellaneous Goods | 2.3        | 5.8        | 2.3           | 3.3           | 4.0        | 4.6        | 4.6        | 3.1        | 3.9        | 4.7        | 5.4        | 6.7        | 7.1         | 7.5         | 8.9         | 9.3         | 7.8         |

CY = Calendar Year

FY = Financial Year

Source: Uganda Bureau of Statistics

**TABLE 9: UGANDA MONTHLY INFLATION BY COICOP DIVISIONS (JANUARY 2021 – JANUARY 2023).**

| Div. | PARTICULARS  | Jan-22      | Feb-22     | Mar-22     | Apr-22     | May-22     | Jun-22     | Jul-22     | Aug-22     | Sep-22     | Oct-22     | Nov-22     | Dec-22     | Jan-23      |
|------|--|-------------|------------|------------|------------|------------|------------|------------|------------|------------|------------|------------|------------|-------------|
|      | <b>Headline</b>  | <b>-0.3</b> | <b>1.0</b> | <b>0.8</b> | <b>1.4</b> | <b>1.5</b> | <b>1.0</b> | <b>1.0</b> | <b>1.0</b> | <b>1.5</b> | <b>0.8</b> | <b>0.1</b> | <b>0.1</b> | <b>-0.2</b> |
| 01   | Food and Non-Alcoholic Beverages                         | 0.4         | 0.4        | 1.4        | 3.1        | 3.5        | 1.0        | 1.5        | 1.8        | 3.5        | 3.6        | 0.2        | 0.6        | 0.4         |
| 02   | Alcoholic Beverages, Tobacco and Narcotics               | -0.2        | 0.3        | -0.2       | 0.3        | 1.0        | 3.9        | 0.1        | -0.1       | 1.0        | 0.5        | 0.6        | 0.7        | 0.2         |
| 03   | Clothing and Footwear                                    | 0.6         | 0.6        | 0.3        | 0.0        | 0.2        | 0.4        | -0.1       | 0.2        | 0.4        | 0.4        | 0.9        | 0.4        | -0.2        |
| 04   | Housing, Water, Electricity, Gas and Other Fuels         | 0.3         | 0.6        | 0.5        | 2.1        | -0.2       | 1.0        | 0.3        | 0.8        | 0.3        | -0.6       | 0.1        | -0.4       | 0.9         |
| 05   | Furnishings, Household Equipment and Routine Household   | 0.6         | 3.7        | 3.8        | 2.8        | 1.1        | -0.1       | 0.6        | -0.1       | 0.8        | 0.2        | 0.4        | -0.1       | -0.3        |
| 06   | Health   | 0.4         | 0.3        | -0.6       | 0.1        | 0.2        | -0.0       | 1.1        | 0.5        | 0.4        | 0.0        | -0.1       | 0.1        | -0.1        |
| 07   | Transport  | -5.3        | -0.0       | 0.4        | 1.2        | 3.0        | 1.9        | 2.7        | 1.8        | 0.1        | -1.6       | -1.3       | -1.1       | -2.0        |
| 08   | Information and Communication                            | 0.1         | -0.7       | -0.8       | -0.1       | -0.1       | 0.3        | -1.0       | 0.1        | 0.9        | 0.5        | -0.2       | 0.0        | 0.2         |
| 09   | Recreation, Sport and Culture                            | 0.5         | 0.1        | 1.6        | 1.1        | 0.4        | 0.9        | 0.6        | 0.5        | 0.2        | -0.7       | 0.1        | 1.3        | -1.1        |
| 10   | Education Services                                       | 0.0         | 8.4        | 0.0        | 0.0        | 0.0        | 0.5        | 0.0        | 0.0        | 3.6        | 0.0        | 0.0        | 0.0        | 0.0         |
| 11   | Restaurants and Accommodation Services                   | 1.0         | 1.2        | 1.6        | 0.6        | 0.0        | 1.1        | 0.4        | 1.0        | 0.6        | 0.5        | 0.0        | -0.3       | -0.1        |
| 12   | Insurance and Financial Services                         | 0.0         | 0.0        | 0.0        | -0.1       | 0.1        | -0.3       | 0.1        | 0.0        | 0.0        | 0.0        | 0.0        | 0.0        | -0.2        |
| 13   | Personal Care, Social Protection and Miscellaneous Goods | 1.3         | 0.4        | 0.1        | -0.8       | 1.1        | 0.6        | 1.1        | 1.2        | 1.5        | 0.2        | 1.5        | 0.9        | -0.1        |

Source: Uganda Bureau of Statistics

**TABLE 10: UGANDA CONSUMER PRICE INDEX (CPI) BY COICOP DIVISION: (2016/17) = 100.**

| Div. | PARTICULARS  | Weights         | CY<br>2021    | CY<br>2022    | FY<br>2020/21 | FY<br>2021/22 | Jan-22        | Feb-22        | Mar-22        | Apr-22        | May-22        | June-22       | Jul-22        | Aug-22        | Sep-22        | Oct-22        | Nov-22        | Dec-22        | Jan-23        |
|------|--|-----------------|---------------|---------------|---------------|---------------|---------------|---------------|---------------|---------------|---------------|---------------|---------------|---------------|---------------|---------------|---------------|---------------|---------------|
|      | <b>Headline (all items index)</b>                        | <b>1,000.00</b> | <b>113.02</b> | <b>121.15</b> | <b>111.77</b> | <b>115.61</b> | <b>114.30</b> | <b>115.42</b> | <b>116.38</b> | <b>117.98</b> | <b>119.73</b> | <b>120.88</b> | <b>122.04</b> | <b>123.24</b> | <b>125.10</b> | <b>126.13</b> | <b>126.21</b> | <b>126.38</b> | <b>126.19</b> |
| 01   | Food and Non-Alcoholic Beverages                         | 270.54          | 107.44        | 122.03        | 105.87        | 111.45        | 109.83        | 110.28        | 111.85        | 115.28        | 119.28        | 120.48        | 122.31        | 124.46        | 128.88        | 133.47        | 133.70        | 134.49        | 134.99        |
| 02   | Alcoholic Beverages, Tobacco and Narcotics               | 38.80           | 107.33        | 112.72        | 107.01        | 108.54        | 108.53        | 108.84        | 108.61        | 108.91        | 109.96        | 114.23        | 114.29        | 114.13        | 115.26        | 115.89        | 116.55        | 117.37        | 117.67        |
| 03   | Clothing and Footwear                                    | 69.77           | 115.01        | 118.79        | 114.20        | 116.60        | 116.75        | 117.48        | 117.88        | 117.90        | 118.14        | 118.62        | 118.55        | 118.79        | 119.28        | 119.79        | 120.88        | 121.39        | 121.09        |
| 04   | Housing, Water, Electricity, Gas and Other Fuels         | 104.16          | 111.42        | 116.10        | 111.64        | 113.08        | 112.21        | 112.87        | 113.39        | 115.81        | 115.62        | 116.77        | 117.08        | 118.04        | 118.39        | 117.74        | 117.86        | 117.40        | 118.41        |
| 05   | Furnishings, Household Equipment and Routine Household   | 48.37           | 110.60        | 126.64        | 108.84        | 117.85        | 114.79        | 119.02        | 123.54        | 126.98        | 128.35        | 128.19        | 129.00        | 128.81        | 129.85        | 130.08        | 130.58        | 130.46        | 130.13        |
| 06   | Health   | 47.47           | 116.19        | 119.35        | 113.22        | 117.74        | 118.39        | 118.72        | 117.98        | 118.11        | 118.39        | 118.36        | 119.61        | 120.16        | 120.65        | 120.67        | 120.52        | 120.58        | 120.50        |
| 07   | Transport  | 104.55          | 143.70        | 149.36        | 139.94        | 144.99        | 141.04        | 141.03        | 141.56        | 143.26        | 147.60        | 150.40        | 154.42        | 157.12        | 157.28        | 154.74        | 152.74        | 151.10        | 148.01        |
| 08   | Information and Communication                            | 44.32           | 94.40         | 92.91         | 94.93         | 93.42         | 94.14         | 93.50         | 92.71         | 92.65         | 92.56         | 92.82         | 91.93         | 92.06         | 92.84         | 93.33         | 93.15         | 93.19         | 93.41         |
| 09   | Recreation, Sport and Culture                            | 49.85           | 109.04        | 113.49        | 109.19        | 110.18        | 109.48        | 109.58        | 111.38        | 112.56        | 113.05        | 114.01        | 114.74        | 115.35        | 115.64        | 114.80        | 114.92        | 116.41        | 115.11        |
| 10   | Education Services                                       | 57.96           | 109.29        | 119.67        | 108.96        | 113.37        | 109.51        | 118.67        | 118.67        | 118.67        | 118.67        | 119.24        | 119.24        | 119.24        | 123.52        | 123.52        | 123.52        | 123.52        | 123.52        |
| 11   | Restaurants and Accommodation Services                   | 87.38           | 109.20        | 115.49        | 108.30        | 111.50        | 110.44        | 111.78        | 113.60        | 114.24        | 114.30        | 115.56        | 115.99        | 117.11        | 117.83        | 118.45        | 118.48        | 118.16        | 118.07        |
| 12   | Insurance and Financial Services                         | 22.80           | 115.10        | 116.74        | 114.03        | 116.56        | 116.86        | 116.87        | 116.87        | 116.78        | 116.84        | 116.48        | 116.65        | 116.70        | 116.70        | 116.73        | 116.73        | 116.73        | 116.54        |
| 13   | Personal Care, Social Protection and Miscellaneous Goods | 54.04           | 113.88        | 120.53        | 112.49        | 116.23        | 117.21        | 117.65        | 117.72        | 116.77        | 118.03        | 118.73        | 120.01        | 121.49        | 123.29        | 123.58        | 125.39        | 126.52        | 126.33        |

CY = Calendar Year

FY = Financial Year

Source: Uganda Bureau of Statistics

TABLE 11: UGANDA CONSUMER PRICE INDEX (CPI) AND INFLATION FOR CORE & NON CORE: (2016/17) = 100.

| GROUP            | Weights | CY     | CY     | FY      | FY      |        |        |        |        |        |         |        |        |        |        |        |        |        |
|------------------|---------|--------|--------|---------|---------|--------|--------|--------|--------|--------|---------|--------|--------|--------|--------|--------|--------|--------|
|                  |         | 2021   | 2022   | 2020/21 | 2021/22 | Jan-22 | Feb-22 | Mar-22 | Apr-22 | May-22 | Jun-22  | Jul-22 | Aug-22 | Sep-22 | Oct-22 | Nov-22 | Dec-21 | Jan-23 |
| Headline Index   | 1000.00 | 113.02 | 121.15 | 111.77  | 115.61  | 115.42 | 116.38 | 117.98 | 119.73 | 120.88 | 122.04  | 123.24 | 125.10 | 126.13 | 126.21 | 126.38 | 126.20 | 126.19 |
| Core             | 839.62  | 114.23 | 121.07 | 112.89  | 116.49  | 115.30 | 116.52 | 117.19 | 118.26 | 119.55 | 120.75  | 121.94 | 122.74 | 124.21 | 125.19 | 125.48 | 125.77 | 125.64 |
| Non - Core       | 160.38  | 106.67 | 121.55 | 105.92  | 110.97  | 109.07 | 109.64 | 112.14 | 116.51 | 120.66 | 121.5 9 | 122.56 | 125.91 | 129.79 | 131.07 | 130.08 | 129.59 | 129.07 |
| Monthly % Change |         |        |        |         |         |        |        |        |        |        |         |        |        |        |        |        |        |        |
| Headline         |         |        |        |         |         | -0.3   | 1.0    | 0.8    | 1.4    | 1.5    | 1.0     | 1.0    | 1.0    | 1.5    | 0.8    | 0.1    | 0.1    | -0.2   |
| Core             |         |        |        |         |         | -0.7   | 1.1    | 0.6    | 0.9    | 1.1    | 1.0     | 1.0    | 0.7    | 1.2    | 0.8    | 0.2    | 0.2    | -0.1   |
| Non - Core       |         |        |        |         |         | 1.7    | 0.5    | 2.3    | 3.9    | 3.6    | 0.8     | 0.8    | 2.7    | 3.1    | 1.5    | -0.8   | -0.4   | -0.4   |
| Annual % Change  |         |        |        |         |         |        |        |        |        |        |         |        |        |        |        |        |        |        |
| Headline         |         | 2.2    | 7.2    | 2.5     | 3.4     | 2.7    | 3.2    | 3.7    | 4.9    | 6.3    | 6.8     | 7.9    | 9.0    | 10.0   | 10.7   | 10.6   | 10.2   | 10.4   |
| Core             |         | 2.8    | 6.0    | 3.5     | 3.2     | 2.3    | 3.1    | 3.6    | 4.3    | 5.1    | 5.5     | 6.3    | 7.2    | 8.1    | 8.9    | 8.8    | 8.4    | 9.0    |
| Non - Core       |         | -0.8   | 13.9   | -2.8    | 4.8     | 5.0    | 3.5    | 4.8    | 7.9    | 12.9   | 14.3    | 16.8   | 19.1   | 20.3   | 20.9   | 20.7   | 20.8   | 18.3   |

CY = Calendar Year  
FY = Financial Year  
Source: Uganda Bureau of Statistics

TABLE 12: UGANDA CONSUMER PRICE INDEX (CPI) AND INFLATION FOR FOOD & NON FOOD: (2016/17) = 100.

| GROUP            | Weights | CY     | CY     | FY      | FY      |        |        |        |        |        |        |        |         |        |        |        |        |        |
|------------------|---------|--------|--------|---------|---------|--------|--------|--------|--------|--------|--------|--------|---------|--------|--------|--------|--------|--------|
|                  |         | 2021   | 2022   | 2020/21 | 2021/22 | Jan-22 | Feb-22 | Mar-22 | Apr-22 | May-22 | Jun-22 | Jul-22 | Aug-22  | Sep-22 | Oct-22 | Nov-22 | Dec-22 | Jan-23 |
| Headline Index   | 1000.00 | 113.02 | 121.15 | 111.77  | 115.61  | 114.30 | 115.42 | 116.38 | 117.98 | 119.73 | 120.88 | 122.04 | 1123.24 | 125.10 | 126.13 | 126.21 | 126.38 | 126.19 |
| Food             | 254.24  | 107.51 | 122.98 | 105.90  | 111.75  | 110.07 | 110.52 | 112.17 | 115.79 | 120.03 | 121.32 | 123.27 | 125.58  | 130.27 | 135.12 | 135.37 | 136.20 | 136.75 |
| Non - Food       | 745.76  | 114.90 | 120.53 | 113.77  | 116.93  | 115.74 | 117.09 | 117.81 | 118.72 | 119.62 | 120.74 | 121.62 | 122.45  | 123.34 | 123.07 | 123.09 | 123.04 | 122.59 |
| Monthly % Change |         |        |        |         |         |        |        |        |        |        |        |        |         |        |        |        |        |        |
| Headline         |         |        |        |         |         | -0.3   | 1.0    | 0.8    | 1.4    | 1.5    | 1.0    | 1.0    | 1.0     | 1.5    | 0.8    | 0.1    | 0.1    | -0.2   |
| Food             |         |        |        |         |         | 0.5    | 0.4    | 1.5    | 3.2    | 3.7    | 1.1    | 1.6    | 1.9     | 3.7    | 3.7    | 0.2    | 0.6    | 0.4    |
| Non - Food       |         |        |        |         |         | -0.6   | 1.2    | 0.6    | 0.8    | 0.8    | 0.9    | 0.7    | 0.7     | 0.7    | -0.2   | 0.0    | 0.0    | -0.4   |
| Annual % Change  |         |        |        |         |         |        |        |        |        |        |        |        |         |        |        |        |        |        |
| Headline         |         | 2.2    | 7.2    | 2.5     | 3.4     | 2.7    | 3.2    | 3.7    | 4.9    | 6.3    | 6.8    | 7.9    | 9.0     | 10.0   | 10.7   | 10.6   | 10.2   | 10.4   |
| Food             |         | 0.4    | 14.4   | -1.1    | 5.5     | 5.6    | 4.8    | 4.6    | 7.2    | 11.7   | 13.8   | 15.8   | 16.7    | 19.5   | 23.5   | 24.1   | 24.4   | 24.3   |
| Non - Food       |         | 2.8    | 4.9    | 3.7     | 2.8     | 1.8    | 2.7    | 3.5    | 4.1    | 4.5    | 4.6    | 5.4    | 6.6     | 6.9    | 6.6    | 6.3    | 5.7    | 5.9    |

CY = Calendar Year  
FY = Financial Year  
Source: Uganda Bureau of Statistics

**TABLE 13: UGANDA CONSUMER PRICE INDEX (CPI) AND INFLATION FOR FOOD CROPS, OTHER GOODS, SERVICES AND ENERGY FUEL & UTILITIES: (2016/17) = 100.**

|                                     | Weights        | CY            | CY            | FY            | FY            |               |               |               |               |               |               |               |               |               |               |               |               |               |
|-------------------------------------|----------------|---------------|---------------|---------------|---------------|---------------|---------------|---------------|---------------|---------------|---------------|---------------|---------------|---------------|---------------|---------------|---------------|---------------|
| Group                               |                | 2021          | 2022          | 2020/21       | 2021/22       | Jan-22        | Feb-22        | Mar-22        | Apr-22        | May-22        | Jun-22        | Jul-22        | Aug-22        | Sep-22        | Oct-22        | Nov-22        | Dec-22        | Jan-23        |
| <b>Headline Index</b>               | <b>1000.00</b> | <b>113.02</b> | <b>121.15</b> | <b>111.77</b> | <b>115.61</b> | <b>114.30</b> | <b>115.42</b> | <b>116.38</b> | <b>117.98</b> | <b>119.73</b> | <b>120.88</b> | <b>122.04</b> | <b>123.24</b> | <b>125.10</b> | <b>126.13</b> | <b>126.21</b> | <b>126.38</b> | <b>126.20</b> |
| <b>Other Goods</b>                  | <b>455.51</b>  | 113.22        | 123.44        | 111.72        | 116.82        | 116.19        | 117.33        | 118.13        | 119.74        | 121.34        | 123.00        | 124.48        | 125.25        | 127.04        | 129.08        | 129.58        | 130.17        | 130.51        |
| <b>Services</b>                     | <b>384.11</b>  | 115.44        | 118.26        | 114.27        | 116.11        | 114.25        | 115.57        | 116.07        | 116.51        | 117.42        | 118.08        | 118.92        | 119.76        | 120.84        | 120.57        | 120.61        | 120.55        | 119.87        |
| <b>Food Crops and Related Items</b> | <b>95.10</b>   | 98.82         | 113.58        | 97.80         | 102.11        | 98.88         | 98.68         | 102.33        | 107.82        | 114.10        | 112.56        | 112.01        | 115.50        | 121.95        | 126.31        | 126.20        | 126.62        | 126.15        |
| <b>Energy Fuel and Utilities</b>    | <b>65.28</b>   | 118.10        | 133.16        | 117.74        | 123.88        | 123.92        | 125.61        | 126.43        | 129.17        | 130.21        | 134.74        | 137.94        | 141.08        | 141.22        | 138.01        | 135.74        | 133.92        | 133.32        |
|                                     |                |               |               |               |               |               |               |               |               |               |               |               |               |               |               |               |               |               |
| <b>Monthly % Change</b>             |                |               |               |               |               |               |               |               |               |               |               |               |               |               |               |               |               |               |
| <b>Headline</b>                     |                |               |               |               |               | <b>-0.3</b>   | <b>1.0</b>    | <b>0.8</b>    | <b>1.4</b>    | <b>1.5</b>    | <b>1.0</b>    | <b>1.0</b>    | <b>1.0</b>    | <b>1.5</b>    | <b>0.8</b>    | <b>0.1</b>    | <b>0.1</b>    | <b>-0.2</b>   |
| <b>Other Goods</b>                  |                |               |               |               |               | 0.4           | 1.0           | 0.7           | 1.4           | 1.3           | 1.4           | 1.2           | 0.6           | 1.4           | 1.6           | 0.4           | 0.5           | 0.3           |
| <b>Services</b>                     |                |               |               |               |               | -1.9          | 1.2           | 0.4           | 0.4           | 0.8           | 0.6           | 0.7           | 0.7           | 0.9           | -0.2          | 0.0           | -0.0          | -0.6          |
| <b>Food Crops and Related Items</b> |                |               |               |               |               | 1.1           | -0.2          | 3.7           | 5.4           | 5.8           | -1.4          | -0.5          | 3.1           | 5.6           | 3.6           | -0.1          | 0.3           | -0.4          |
| <b>Energy Fuel and Utilities</b>    |                |               |               |               |               | 2.4           | 1.4           | 0.7           | 2.2           | 0.8           | 3.5           | 2.4           | 2.3           | 0.1           | -2.3          | -1.6          | -1.3          | -0.5          |
|                                     |                |               |               |               |               |               |               |               |               |               |               |               |               |               |               |               |               |               |
| <b>Annual % Change</b>              |                |               |               |               |               |               |               |               |               |               |               |               |               |               |               |               |               |               |
| <b>Headline</b>                     |                | <b>2.2</b>    | <b>7.2</b>    | <b>2.5</b>    | <b>3.4</b>    | <b>2.7</b>    | <b>3.2</b>    | <b>3.7</b>    | <b>4.9</b>    | <b>6.3</b>    | <b>6.8</b>    | <b>7.9</b>    | <b>9.0</b>    | <b>10.0</b>   | <b>10.7</b>   | <b>10.6</b>   | <b>10.2</b>   | <b>10.4</b>   |
| <b>Other Goods</b>                  |                | 1.7           | 9.0           | 1.4           | 4.6           | 4.3           | 5.1           | 5.4           | 6.6           | 7.8           | 9.3           | 10.2          | 10.2          | 11.2          | 12.7          | 12.8          | 12.5          | 12.3          |
| <b>Services</b>                     |                | 4.0           | 2.4           | 6.0           | 1.6           | 0.0           | 0.8           | 1.4           | 1.7           | 2.0           | 1.1           | 2.0           | 3.7           | 4.5           | 4.4           | 4.1           | 3.6           | 4.9           |
| <b>Food Crops and Related Items</b> |                | -0.8          | 14.9          | -4.3          | 4.4           | 3.7           | 0.7           | 1.9           | 5.4           | 13.6          | 14.5          | 16.4          | 18.8          | 21.6          | 25.6          | 27.8          | 29.4          | 27.6          |
| <b>Energy Fuel and Utilities</b>    |                | -0.7          | 12.8          | -1.0          | 5.3           | 6.5           | 7.0           | 8.5           | 11.2          | 12.0          | 14.2          | 17.2          | 19.6          | 18.7          | 15.2          | 12.2          | 10.6          | 7.6           |

CY = Calendar Year  
FY = Financial Year  
Source: Uganda Bureau of Statistics

**TABLE 14: UGANDA ANNUAL AND MONTHLY INFLATION BY INCOME GROUPS AND GEOGRAPHICAL AREAS :**

| Basket                  | CY<br>2021 | CY<br>2022 | FY<br>2020/21 | FY<br>2021/22 | Jan-22 | Feb-22 | Mar-22 | Apr-22 | May-22 | Jun-22 | Jul-22 | Aug-22 | Sep-22 | Oct-22 | Nov-22 | Dec-22 | Jan-23 |
|-------------------------|------------|------------|---------------|---------------|--------|--------|--------|--------|--------|--------|--------|--------|--------|--------|--------|--------|--------|
| <b>Annual % Change</b>  |            |            |               |               |        |        |        |        |        |        |        |        |        |        |        |        |        |
| Headline                | 2.2        | 7.2        | 2.5           | 3.4           | 2.7    | 3.2    | 3.7    | 4.9    | 6.3    | 6.8    | 7.9    | 9.0    | 10.0   | 10.7   | 10.6   | 10.2   | 10.4   |
| Kampala High Income     | 2.9        | 6.4        | 2.8           | 3.7           | 3.1    | 4.2    | 4.0    | 4.8    | 5.1    | 5.7    | 6.8    | 7.6    | 8.3    | 9.1    | 9.1    | 8.6    | 8.4    |
| Kampala Middle Income   | 1.9        | 7.2        | 2.1           | 2.7           | 1.0    | 2.0    | 3.0    | 4.4    | 6.1    | 6.5    | 7.6    | 9.1    | 10.7   | 12.1   | 12.0   | 11.7   | 12.0   |
| Kampala Low Income      | 1.3        | 6.9        | 2.2           | 2.6           | 1.6    | 1.9    | 2.4    | 4.5    | 7.1    | 6.9    | 7.7    | 10.5   | 10.2   | 10.9   | 10.2   | 9.0    | 10.5   |
| Masaka                  | 2.5        | 7.0        | 3.3           | 3.6           | 2.9    | 3.5    | 3.5    | 4.5    | 6.7    | 7.1    | 7.9    | 8.2    | 9.7    | 10.3   | 9.4    | 9.9    | 10.1   |
| Mbarara                 | 2.0        | 6.4        | 2.8           | 2.5           | 2.5    | 1.9    | 3.6    | 4.2    | 5.8    | 4.7    | 6.4    | 8.9    | 9.8    | 9.8    | 10.0   | 9.7    | 9.9    |
| Jinja                   | 1.8        | 7.1        | 2.3           | 2.9           | 1.6    | 1.6    | 2.6    | 3.8    | 5.6    | 7.7    | 8.8    | 9.0    | 11.0   | 11.0   | 11.1   | 10.9   | 11.5   |
| Mbale                   | 1.8        | 9.1        | 1.5           | 4.3           | 3.9    | 3.9    | 4.8    | 5.7    | 8.5    | 9.2    | 11.0   | 11.8   | 12.5   | 13.3   | 12.4   | 11.4   | 11.1   |
| Gulu                    | 1.9        | 9.4        | 2.7           | 4.5           | 4.5    | 4.4    | 5.5    | 6.9    | 8.4    | 10.4   | 10.8   | 11.7   | 12.2   | 12.8   | 12.8   | 12.0   | 12.4   |
| Arua                    | 2.2        | 9.1        | 2.6           | 4.3           | 4.5    | 3.8    | 4.4    | 5.0    | 7.1    | 9.8    | 10.7   | 10.4   | 14.4   | 13.4   | 13.2   | 12.4   | 13.1   |
| Fortportal              | 1.4        | 8.0        | 1.8           | 3.6           | 2.5    | 2.6    | 3.7    | 5.8    | 7.8    | 8.2    | 8.5    | 9.4    | 10.6   | 11.5   | 11.9   | 13.2   | 12.9   |
| <b>Monthly % Change</b> |            |            |               |               |        |        |        |        |        |        |        |        |        |        |        |        |        |
| Headline                |            |            |               |               | -0.3   | 1.0    | 0.8    | 1.4    | 1.5    | 1.0    | 1.0    | 1.0    | 1.5    | 0.8    | 0.1    | 0.1    | -0.2   |
| Kampala High Income     |            |            |               |               | -0.4   | 1.4    | 0.3    | 0.8    | 1.0    | 0.7    | 1.2    | 0.8    | 1.1    | 0.7    | 0.3    | 0.3    | -0.6   |
| Kampala Middle Income   |            |            |               |               | -1.1   | 1.2    | 1.1    | 1.6    | 1.8    | 0.5    | 1.1    | 0.9    | 2.0    | 1.2    | 0.6    | 0.2    | -0.8   |
| Kampala Low Income      |            |            |               |               | -1.8   | 0.9    | 0.7    | 2.1    | 2.4    | 0.6    | 0.2    | 1.9    | 0.3    | 0.9    | 0.3    | 0.0    | -0.4   |
| Masaka                  |            |            |               |               | -0.0   | 0.7    | 0.6    | 1.5    | 1.5    | 0.8    | 1.3    | 1.1    | 1.9    | 0.7    | -0.9   | 0.4    | 0.2    |
| Mbarara                 |            |            |               |               | 0.3    | 0.4    | 1.7    | 0.8    | 1.3    | 0.2    | 1.2    | 1.7    | 1.4    | 0.5    | -0.4   | 0.2    | 0.5    |
| Jinja                   |            |            |               |               | -0.1   | 0.0    | 1.6    | 2.3    | 1.2    | 2.7    | 0.5    | -0.1   | 2.2    | -0.0   | 0.2    | 0.1    | 0.5    |
| Mbale                   |            |            |               |               | 0.8    | 0.7    | 1.4    | 1.5    | 2.0    | 1.7    | 1.1    | 1.0    | 1.0    | 1.2    | -0.7   | -0.9   | 0.5    |
| Gulu                    |            |            |               |               | 0.0    | 0.7    | 1.1    | 1.7    | 1.6    | 1.7    | 1.1    | 1.6    | 2.0    | 0.2    | 0.2    | -0.5   | 0.4    |
| Arua                    |            |            |               |               | 0.8    | 1.4    | 0.1    | 1.8    | 1.1    | 3.5    | 0.7    | 0.2    | 2.5    | 0.6    | -0.4   | -0.7   | 1.4    |
| Fortportal              |            |            |               |               | 0.2    | 0.8    | 0.7    | 2.1    | 2.4    | 0.7    | 0.2    | 0.8    | 2.0    | 1.9    | -0.4   | 1.0    | -0.0   |

CY = Calendar Year

FY = Financial Year

Source: Uganda Bureau of Statistics



TABLE 15: UGANDA CONSUMER PRICE INDEX (CPI) BY INCOME GROUPS AND GEOGRAPHICAL AREAS : (2016/17) = 100.

| Basket                | Weights  | CY     | CY     | FY      | FY      | Jan-22 | Feb-22 | Mar-22 | Apr-22 | May-22 | Jun-22 | Jul-22 | Aug-22 | Sep-22 | Oct-22 | Nov-22 | Dec-22 | Jan-23 |
|-----------------------|----------|--------|--------|---------|---------|--------|--------|--------|--------|--------|--------|--------|--------|--------|--------|--------|--------|--------|
|                       |          | 2021   | 2022   | 2020/21 | 2021/22 |        |        |        |        |        |        |        |        |        |        |        |        |        |
| Headline              | 1,000.00 | 113.02 | 121.15 | 111.77  | 115.61  | 114.30 | 115.42 | 116.38 | 117.98 | 119.73 | 120.88 | 122.04 | 123.24 | 125.10 | 126.13 | 126.21 | 126.38 | 126.19 |
| Kampala High Income   | 350.61   | 113.91 | 121.19 | 112.30  | 116.44  | 115.47 | 117.05 | 117.46 | 118.43 | 119.62 | 120.49 | 121.88 | 122.89 | 124.28 | 125.16 | 125.56 | 125.91 | 125.21 |
| Kampala Middle Income | 147.09   | 110.88 | 118.87 | 109.99  | 113.01  | 111.10 | 112.44 | 113.67 | 115.53 | 117.61 | 118.15 | 119.44 | 120.50 | 122.95 | 124.43 | 125.20 | 125.45 | 124.47 |
| Kampala Low Income    | 60.64    | 112.56 | 120.33 | 111.90  | 114.83  | 112.96 | 114.01 | 114.83 | 117.28 | 120.14 | 120.87 | 121.08 | 123.44 | 123.79 | 124.96 | 125.31 | 125.33 | 124.78 |
| Masaka                | 58.22    | 114.49 | 122.49 | 113.03  | 117.15  | 115.88 | 116.66 | 117.42 | 119.12 | 120.89 | 121.91 | 123.44 | 124.84 | 127.20 | 128.12 | 126.96 | 127.41 | 127.61 |
| Mbarara               | 87.02    | 112.19 | 119.42 | 111.48  | 114.30  | 113.37 | 113.78 | 115.68 | 116.62 | 118.10 | 118.35 | 119.76 | 121.84 | 123.58 | 124.25 | 123.71 | 123.94 | 124.62 |
| Jinja                 | 61.44    | 111.47 | 119.34 | 110.44  | 113.59  | 111.98 | 111.98 | 113.81 | 116.40 | 117.74 | 120.86 | 121.45 | 121.34 | 123.96 | 123.96 | 124.22 | 124.33 | 124.90 |
| Mbale                 | 61.82    | 110.84 | 120.89 | 109.51  | 114.16  | 112.94 | 113.78 | 115.41 | 117.18 | 119.51 | 121.58 | 122.91 | 124.10 | 125.38 | 126.92 | 126.04 | 124.86 | 125.49 |
| Gulu                  | 68.87    | 116.10 | 127.01 | 114.76  | 119.92  | 118.61 | 119.44 | 120.79 | 122.82 | 124.76 | 126.87 | 128.22 | 130.25 | 132.90 | 133.23 | 133.46 | 132.80 | 133.35 |
| Arua                  | 27.51    | 114.59 | 125.03 | 113.05  | 117.88  | 116.64 | 118.32 | 118.49 | 120.64 | 122.01 | 126.32 | 127.22 | 127.48 | 130.69 | 131.50 | 130.94 | 130.07 | 131.95 |
| Fortportal            | 76.77    | 112.94 | 121.97 | 111.75  | 115.80  | 114.23 | 115.12 | 115.98 | 118.44 | 121.33 | 122.15 | 122.35 | 123.38 | 125.85 | 128.20 | 127.66 | 128.96 | 128.92 |

CY = Calendar Year

FY = Financial Year

Source: Uganda Bureau of Statistics