



# UGANDA BUREAU OF STATISTICS

P.O. Box 7186, Kampala; Tel: 0414 – 706000; Fax: 0414 – 237553; Email: ubos@ubos.org; Website: www.ubos.org



## PRESS RELEASE

### CONSUMER PRICE INDICES AND INFLATION JANUARY 2026

#### 1.1 Annual Headline Inflation

The Annual Inflation as measured by the Consumer Price Index for Uganda for the 12 months to January 2026 is 3.2 percent compared to 3.1 percent registered in the year ended December 2025, see Table 1 and Figure 1 below.

In particular, Annual Core Inflation registered 3.3 percent in the year ending January 2026 compared to 3.1 percent recorded in the year ended December 2025. Annual Services Inflation recorded 4.8 percent in January 2026 compared to 4.0 percent registered in December 2025. This is mainly due to Annual Passenger transport by Air Inflation (recorded at 8.8 percent in the year ending January 2026 compared to 1.2 percent recorded in the year ended December 2025), Annual Passenger transport by Road Inflation (recorded at 0.0 percent in the year ending January 2026 compared to minus 3.8 percent recorded in the year ended December 2025) and Refuse collection charges (recorded at 126.8 percent compared to 100.8 percent registered in the year ended December 2025). However, Annual Core Goods Inflation registered 2.1 percent in the year ending January 2026 compared to 2.5 percent recorded in the year ended December 2025. This is attributed to Sugar (whose rate of price change is minus 1.2 percent compared to 3.1 percent recorded in the year ended December 2025), Smoked tilapia (whose rate of price change is 1.7 percent compared to 12.5 percent recorded in the year ended December 2025) and Laundry soap (whose rate of price change is minus 2.2 percent compared to 0.2 percent recorded in the year ended December 2025).

In addition, Annual Energy Fuel and Utilities (EFU) Inflation was recorded at 1.7 percent in the year ending January 2026 compared to 1.4 percent registered in the year ended December 2025. This is mainly due to Firewood prices that increased by 6.9 percent in January 2026 compared to 4.9 percent recorded in the year ended December 2025 and Electricity charges (whose rate of price change is minus 1.8 percent compared to minus 3.7 percent recorded in the year ended December 2025).

However, Annual Food Crops and Related Items Inflation registered 3.0 percent in the year ending January 2026 compared to 4.4 percent registered in the year ended December 2025. This is attributed to Matoke (whose rate of price change is minus 4.5 percent compared to 0.7 percent recorded in the year ended December 2025), Tomatoes (whose rate of price change is minus 10.1 percent compared to minus 4.3 percent recorded in the year ended December 2025), Sweet potatoes (whose rate of price change is 4.0 percent compared to 12.5 percent recorded in the year ended December 2025) and Dry beans (whose rate of price change is 1.0 percent compared to 1.5 percent recorded in the year ended December 2025).

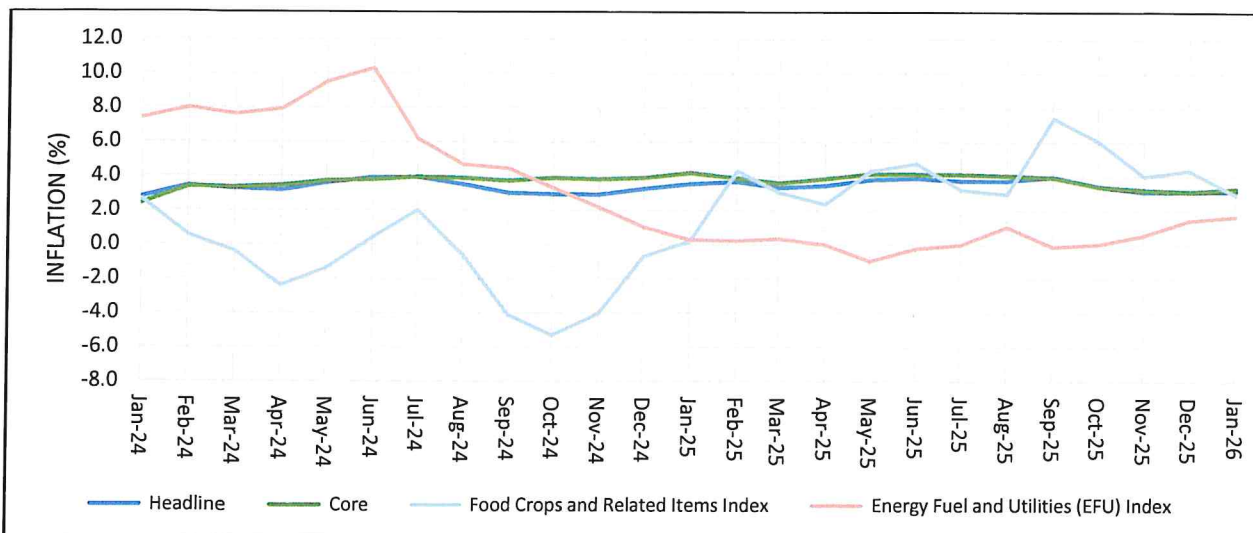
Table 1 and figure 1 below show the components of the Annual Headline Inflation for the year ending January 2026.

**Table 1: Annual Headline, Core, Food Crops and EFU Inflation for December 2025 and January 2026.**

Description	Weights	December 2025	January 2026
<b>Headline</b>	<b>1000</b>	<b>3.1</b>	<b>3.2</b>
<b>Core</b>	<b>839.6200</b>	<b>3.1</b>	<b>3.3</b>
Other Goods	455.5070	2.5	2.1
Services	384.1130	4.0	4.8
<b>Food Crops and Related Items</b>	<b>95.1046</b>	<b>4.4</b>	<b>3.0</b>
<b>Energy Fuel and Utilities (EFU)</b>	<b>65.2755</b>	<b>1.4</b>	<b>1.7</b>

*Cum*

**Figure 1: Annual Headline, Core, Food Crops and EFU Inflation: January 2024 - January 2026**



The overall Annual Consumer Price Indices for the 12 months to January 2026 are shown in Table 2 below.

**Table 2: Overall Annual CPI and Inflation (Base: 2016/17=100)**

Month	Overall CPI	Annual Inflation
January 2026	138.58	3.2
December 2025	138.11	3.1
November 2025	137.46	3.1
October 2025	137.59	3.4
September 2025	137.61	4.0
August 2025	136.97	3.8
July 2025	136.73	3.8
June 2025	136.90	3.9
May 2025	136.77	3.8
April 2025	136.09	3.5
March 2025	135.43	3.4
February 2025	135.19	3.7
January 2025	134.33	3.6
December 2024	133.91	3.3

Chris N. Mukiza (PhD)

**EXECUTIVE DIRECTOR/CHIEF STATISTICIAN**



## Key Annual Inflation Drivers

**Annual Services Inflation for the year ending January 2026 is at 4.8% compared to 4.0% in the year ended December 2025**

Changes in Prices for selected items under Services

### December 2025

- Passenger Transport Services by Air 1.2%
- Passenger Transport Services by Road -3.8%
- Refuse Collection 100.8%



### January 2026

- Passenger Transport Services by Air 8.8%
- Passenger Transport Services by Road 0.0%
- Refuse Collection 126.8%

**Annual Food Crops and Related Items Inflation for the year ending January 2026 is at 3.0% compared to 4.4% in the year ended December 2025**

Changes in prices for selected items under Food Crops and Related Items

### December 2025

- Matoke 0.7%
- Tomatoes -4.3%
- Sweet Potatoes 12.5%
- Dry beans 1.5%



### January 2026

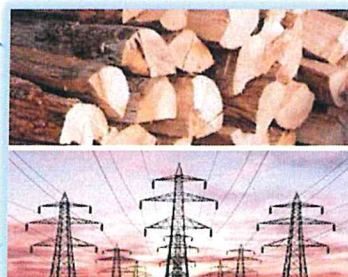
- Matoke -4.5%
- Tomatoes -10.1%
- Sweet Potatoes 4.0%
- Dry beans 1.0%

**Annual Energy, Fuel and Utilities Inflation for the year ending January 2026 is at 1.7% compared to 1.4% in the year ended December 2025**

Changes in prices for selected items under Energy, Fuel and Utilities

### December 2025

- Firewood 4.9%
- Electricity Charges -3.7%



### January 2026

- Firewood 6.9%
- Electricity Charges -1.8%

## 1.2 Annual Inflation by COICOP Divisions

According to the Classification of Individual Consumption According to Purpose (COICOP), the main drivers to the 3.2 percent Inflation were 'Transport' Inflation that registered 1.8 percent in the year ending January 2026 compared to 0.1 percent recorded in the year ended December 2025. 'Insurance and Financial Services' Inflation registered 12.3 percent in the year ending January 2026 compared to 10.1 percent recorded in the year ended December 2025. 'Housing, Water, Electricity, Gas and Other Fuels' Inflation registered 3.1 percent in the year ending January 2026 compared to 2.5 percent registered in the year ended December 2025. 'Recreation, Sport and Culture' Inflation registered 2.1 percent in the year ending January 2026 same rate registered in the year ended December 2025. 'Education Services' Inflation registered 7.6 percent in the year ending January 2026 same rate recorded in the year ended December 2025.

However, 'Food and Non-Alcoholic Beverages' Inflation registered 3.0 percent in the year ending January 2026 compared to 3.5 percent registered in the year ended December 2025. 'Clothing and Footwear' Inflation registered 1.8 percent in the year ending January 2026 compared to 2.6 percent recorded in the year ended December 2025. 'Furnishings, Household Equipment and Routine Household' Inflation registered 1.2 percent in the year ending January 2026 compared to 2.0 percent registered in the year ended December 2025. 'Restaurants and Accommodation Services' Inflation recorded 4.4 percent in the year ending January 2026 compared to 4.7 percent registered in the year ended December 2025. 'Health' Inflation registered 3.8 percent for the year ending January 2026 compared to 4.3 percent registered for the year ended December 2025. 'Alcoholic Beverages, Tobacco and Narcotics' Inflation registered 1.0 percent for the year ending January 2026 compared to 1.6 percent recorded for the year ended December 2025. 'Personal Care, Social Protection and Miscellaneous Goods' Inflation registered 2.0 percent for the year ending January 2026 compared to 2.1 percent registered for the year ended December 2025. 'Information and Communication' Inflation registered 2.1 percent in the year ending January 2026 compared to 2.2 percent recorded in the year ended December 2025, see Table 3 below.

**Table 3: Annual Changes in the Consumer Price Indices for the COICOP Divisions.**

13 COICOP Divisions	Weight	Annual % Change December 2024 - December 2025	Annual % Change January 2025 - January 2026
Food and Non-Alcoholic Beverages	270.5390	3.5	3.0
Alcoholic Beverages, Tobacco and Narcotics	38.7958	1.6	1.0
Clothing and Footwear	69.7729	2.6	1.8
Housing, Water, Electricity, Gas and Other Fuels	104.1617	2.5	3.1
Furnishings, Household Equipment and Routine Household	48.3672	2.0	1.2
Health	47.4695	4.3	3.8
Transport	104.5479	0.1	1.8
Information and Communication	44.3216	2.2	2.1
Recreation, Sport and Culture	49.8494	2.1	2.1
Education Services	57.9558	7.6	7.6
Restaurants and Accommodation Services	87.3791	4.7	4.4
Insurance and Financial Services	22.7953	10.1	12.3
Personal Care, Social Protection and Miscellaneous Goods	54.0447	2.1	2.0
<b>Overall</b>	<b>1,000</b>	<b>3.1</b>	<b>3.2</b>



### 1.3 Annual Headline Inflation by CPI Geographical Center

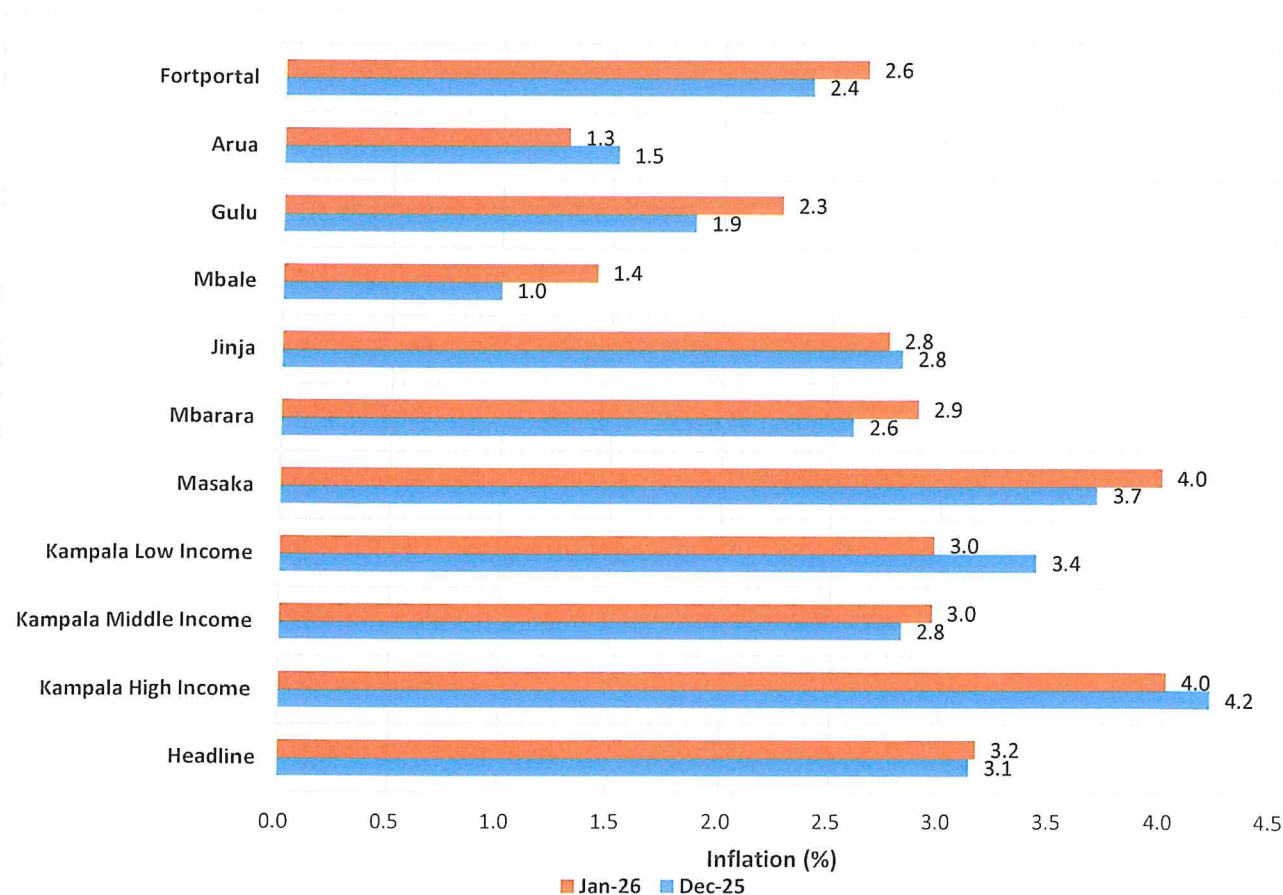
Analysis by geographical areas and income groups revealed that Kampala High Income group and Masaka registered the highest Inflation at 4.0 percent.

Annual Inflation for Kampala High Income was registered at 4.0 percent for the year ending January 2026 compared to 4.2 percent recorded in December 2025. This was mainly driven by annual 'Transport' inflation that registered 2.5 percent in January 2026 compared to 1.8 percent registered in December 2025. In addition, Annual 'Insurance and Financial Services' Inflation registered 14.2 percent in January 2026 compared to 12.0 percent registered in December 2025.

Annual Inflation for Masaka was registered at 4.0 percent for the year ending January 2026 compared to 3.7 percent recorded in December 2025. This was mainly driven by annual 'Restaurants and Accommodation Services' Inflation that increased to 9.6 percent in January 2026 compared to 7.1 percent registered in December 2025. In addition, annual 'Transport' Inflation increased to 3.5 percent in January 2026 compared to 0.6 percent registered in December 2025.

The least Annual Inflation was registered in Arua Centre at 1.3 percent for the year ending January 2026 compared to 1.5 percent recorded in December 2025. This was mainly due to the annual 'Food and Non-Alcoholic Beverages' Inflation that registered 0.6 percent in January 2026 compared to 1.6 percent registered in December 2025. In addition, Annual 'Transport' Inflation registered 1.4 percent in January 2026 compared to 2.8 percent registered in December 2025.

**Figure 2: Annual Inflation by CPI Geographical Center for the 12 months to December 2025 and January 2026**



## 1.4 Monthly Inflation.

The Monthly Headline Inflation for January 2026 increased by 0.3 percent from 0.5 percent rise registered in December 2025, Table 4 below.

This was mainly due to monthly Core Inflation that increased by 0.5 percent in January 2026 from the 0.5 percent rise registered in December 2025. This was mainly due to monthly Services Inflation that increased by 0.7 percent in January 2026 from the 0.7 percent rise recorded in December 2025. In addition, monthly Core Goods Inflation increased by 0.3 percent in January 2026 from the 0.3 percent rise recorded in December 2025.

Monthly Energy Fuel and Utilities (EFU) Inflation was stable at 0.0 percent in January 2026 from the 0.4 percent rise registered in December 2025. This was mainly due to monthly firewood prices that increased by 1.3 percent in January 2026 from the 7.0 percent rise recorded in December 2025. In addition, petrol prices increased by 0.5 percent in January 2026 from the 0.2 percent drop recorded in December 2025. However, the increases were offset by decreases in charcoal prices by 1.0 percent in January 2026 from the 1.0 percent drop registered in December 2025 and cooking gas prices by 0.2 percent in January 2026 from the 0.0 percent registered in December 2025.

Monthly Food Crops and Related Items Inflation decreased by 0.7 percent in January 2026 from the 0.3 percent rise recorded in December 2025. This was attributed to the decrease in prices of matoke by 6.4 percent in January 2026 from the 0.7 percent drop recorded in December 2025, passion fruits by 6.0 percent in January 2026 from the 8.9 percent rise recorded in December 2025, sweet potatoes by 3.8 percent in January 2026 from the 1.6 percent drop recorded in December 2025, pineapples by 8.5 percent in January 2026 from the 0.0 percent recorded in December 2025 and tomatoes by 1.7 percent in January 2026 from the 4.0 percent drop recorded in December 2025.

**Table 4: Monthly Headline, Core, Food Crops and EFU Inflation for December 2025 and January 2026.**

Description	Weights	December 2025	January 2026
<b>Headline</b>	<b>1000</b>	<b>0.5</b>	<b>0.3</b>
<b>Core</b>	<b>839.6200</b>	<b>0.5</b>	<b>0.5</b>
Other Goods	455.5070	0.3	0.3
Services	384.1130	0.7	0.7
<b>Food Crops and Related Items</b>	<b>95.1046</b>	<b>0.3</b>	<b>-0.7</b>
<b>Energy Fuel and Utilities (EFU)</b>	<b>65.2755</b>	<b>0.4</b>	<b>0.0</b>



The overall monthly Consumer Price Indices and Inflation from November 2024 to January 2026 are shown in Table 5 below.

**Table 5: Overall Monthly CPI and Rates of Inflation (Base: 2016/17=100)**

Month	Overall CPI	Monthly Inflation
January 2026	138.58	0.3
December 2025	138.11	0.5
November 2025	137.46	-0.1
October 2025	137.59	0.0
September 2025	137.61	0.5
August 2025	136.97	0.2
July 2025	136.73	-0.1
June 2025	136.90	0.1
May 2025	136.77	0.5
April 2025	136.09	0.5
March 2025	135.43	0.2
February 2025	135.19	0.6
January 2025	134.33	0.3
December 2024	133.91	0.5

### 1.5 Monthly Inflation by COICOP Divisions

According to the Classification of Individual Consumption According to Purpose (COICOP), monthly Insurance and Financial Services Inflation recorded 9.1 percent increase in January 2026 from the 0.0 percent recorded in December 2025. Monthly Transport Inflation increased by 0.3 percent in January 2026 from the 1.7 percent rise recorded in December 2025. Monthly Housing, Water, Electricity, Gas and Other Fuels Inflation increased by 0.4 percent in January 2026 from the 0.3 percent rise recorded in December 2025. Monthly Food and Non-alcoholic Beverages Inflation increased by 0.1 percent in January 2026 from the 0.5 percent rise recorded in December 2025. Monthly Restaurants and Accommodation Services Inflation increased by 0.1 percent in January 2026 from the 0.3 percent rise recorded in December 2025. Monthly Furnishings, Household Equipment and Routine Household Inflation increased by 0.2 percent in January 2026 from the 0.2 percent rise recorded in December 2025. Monthly Clothing and Footwear Inflation increased by 0.1 percent in January 2026 from the 0.2 percent rise recorded in December 2025. Monthly Alcoholic Beverages, Tobacco and Narcotics Inflation increased by 0.1 percent in January 2026 from 0.2 percent rise recorded in December 2025.

However, Monthly Recreation, Sport and Culture Inflation decreased by 0.4 percent in January 2026 from 0.2 percent rise recorded in December 2025. Monthly Personal Care, Social Protection and Miscellaneous Goods Inflation decreased by 0.1 percent in January 2026 from 0.1 percent rise recorded in December 2025. Monthly Health Inflation registered 0.0 percent in January 2026 from 0.5 percent rise recorded in December 2025. Monthly Education Services Inflation registered 0.0 percent in January 2026 same rate recorded in December 2025. Monthly Information and Communication Inflation recorded 0.0 percent in January 2026 same rate recorded in December 2025.

**Table 6: Monthly Changes in the Consumer Price Indices for the COICOP Divisions.**

<b>13 COICOP Divisions</b>	<b>Weight</b>	<b>Monthly %Change November 2025-December 2025</b>	<b>Monthly % Change December 2025 – January 2026</b>
Food and Non-Alcoholic Beverages	270.5390	0.5	0.1
Alcoholic Beverages, Tobacco and Narcotics	38.7958	0.2	0.1
Clothing and Footwear	69.7729	0.2	0.1
Housing, Water, Electricity, Gas and Other Fuels	104.1617	0.3	0.4
Furnishings, Household Equipment and Routine Household	48.3672	0.2	0.2
Health	47.4695	0.5	0.0
Transport	104.5479	1.7	0.3
Information and Communication	44.3216	0.0	0.0
Recreation, Sport and Culture	49.8494	0.2	-0.4
Education Services	57.9558	0.0	0.0
Restaurants and Accommodation Services	87.3791	0.3	0.1
Insurance and Financial Services	22.7953	0.0	9.1
Personal Care, Social Protection and Miscellaneous Goods	54.0447	0.1	-0.1
<b>Overall</b>	<b>1,000</b>	<b>0.5</b>	<b>0.3</b>



# Key Monthly Inflation Drivers

Monthly Core goods Inflation for January 2026 is 0.3% from 0.3% in December 2025

Changes in Prices for selected items under Core goods

## December 2025

- Local Chicken 5.8%
- Beef 0.9%
- Fresh Tilapia -1.7%
- Smoked Nile Perch -1.4%



## January 2026

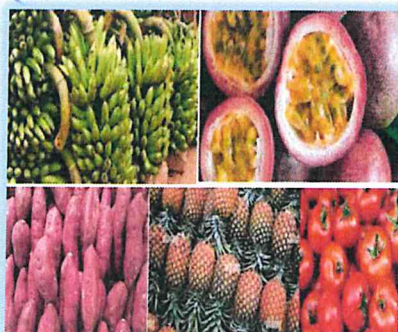
- Local Chicken 9.1%
- Beef 1.7%
- Fresh Tilapia 8.3%
- Smoked Nile Perch 6.9%

Monthly Food Crops and Related Items Inflation for January 2026 is -0.7% from 0.3% in December 2025.

Changes in Prices for selected items under Food Crops and Related Items

## December 2025

- Matoke -0.7%
- Passion Fruits 8.9%
- Sweet Potatoes -1.6%
- Pineapples 0.0%
- Tomatoes -4.0%



## January 2026

- Matoke -6.4%
- Passion Fruits -6.0%
- Sweet Potatoes -3.8%
- Pineapples -8.5%
- Tomatoes -1.7%

Monthly Energy, Fuel and Utilities Inflation for January 2026 is 0.0% from 0.4% in December 2025

Changes in Prices for selected items under Energy, Fuel and Utilities

## December 2025

- Firewood 7.0%
- Petrol -0.2%
- Charcoal -1.0%
- Cooking gas 0.0%



## January 2026

- Firewood 1.3%
- Petrol 0.5%
- Charcoal -1.0%
- Cooking gas -0.2%

Relative to January 2025 and December 2025, the national average retail prices of selected commodities in January 2026 are shown in Table 7 below.

**Table 7: National Average Retail Prices of Selected Commodities**

Commodity Name	Quantity	Unit of Measure	Average Price January 2025	Average Price December 2025	Average Price January 2026
Local Chicken	1	Kg	18,407	18,431	19,899
Fresh Tilapia	1	Kg	16,244	15,410	16,017
Beef	1	Kg	15,668	17,176	17,435
Fresh cassava	1	Kg	789	880	916
Irish potatoes	1	Kg	2,000	1,925	1,945
Onions	1	Kg	3,439	3,557	3,661
Fresh beans	1	Kg	6,640	6,266	6,694
Matoke	1	Kg	1,188	1,243	1,177
Passion fruits	1	Kg	6,875	8,115	7,310
Petrol	1	Litre	5,006	5,040	5,058
Diesel	1	Litre	4,654	4,668	4,693