



STATISTICAL RELEASE

UGANDA BUREAU OF STATISTICS



Construction Sector Indices

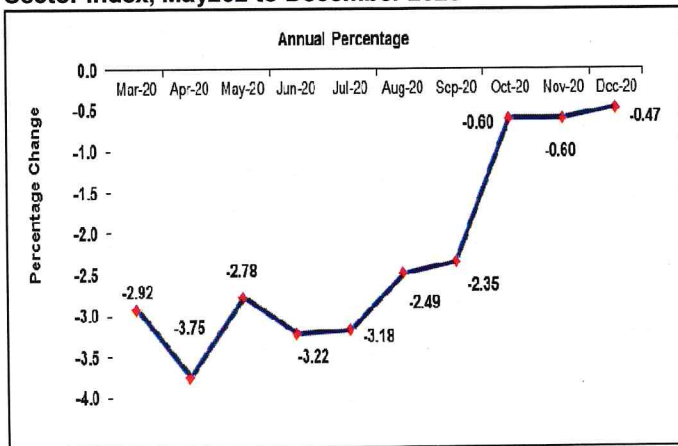
December 2020

HIGHLIGHTS

Annual Changes:

The average input prices for the Whole Construction Sector (covering material prices, wage rates & equipment hire rates) decreased by 0.47% for the year ending December 2020 compared to 0.60% decrease for the year ended November 2020.

Fig 1: Annual Price Changes at the Whole Construction Sector Index, May202 to December 2020



The main contributor to the annual decrease in input prices of 0.47% was:

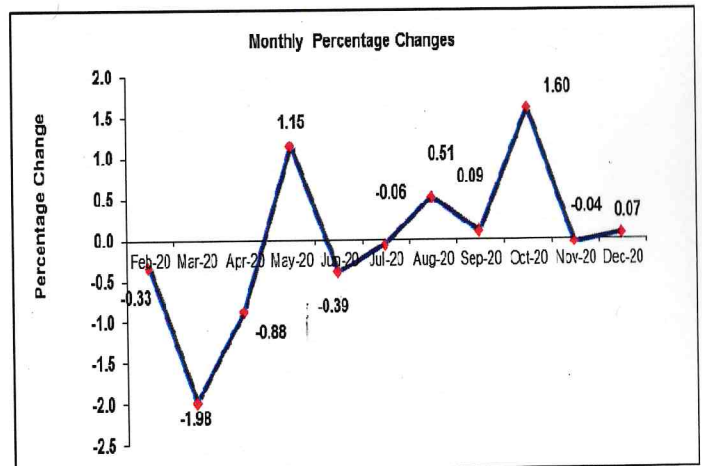
- A decrease of 5.03% in prices of inputs for Civil Works driven by a 4.80%, 8.47% and 1.88% fall in input prices for Roads Paved, Roads Gravel and Water projects respectively.

Monthly Changes

On a month to month basis, prices of inputs into the Whole Construction Sector registered an increase of 0.07% in the month of December 2020 compared to a 0.04% decrease registered for the month of November 2020. This was mainly due to;

- A 0.29% increase in prices of inputs into the Residential Buildings.
- An increase of 0.17% in prices of inputs for Civil Works driven by 0.29% and 0.82% input prices for paved roads and water projects respectively.

Fig 2: Monthly Price Changes at the Whole Construction Sector Index, February 202 to December 2020



Material Inputs (Basic Headings) - Monthly Changes

Monthly, prices of material inputs and equipment hire in December 2020 showed increasing trends. Those with notable increases were;

- PVC & HDPE Pipes prices increased by 2.54%
- Burnt clay bricks & tiles increased by 0.03%
- Cement increased by 0.01%
- Lime by 9.08%

Imelda Atai Musana (PhD)
For: EXECUTIVE DIRECTOR

Thursday 4th March 2021

Notes: 1 This release contains composite input price indices for the construction sector and their "basic heading" Components.

2. To obtain the percentage change in prices between any two periods, divide the index number in the second period by the index number in the first period, subtract 1 and multiply the result by 100.

3. Comments can be addressed to: Mr Peter Opio, Director, Business & Industry Statistics, Uganda Bureau of Statistics on email peter.opio@ubos.org & phone no: 0414 706016 or 0711 706017 (Mob).

The next release date will be communicated

Percentage change since previous year														
Sector	Weights	Dec-19	Jan-20	Feb-20	Mar-20	Apr-20	May-20	Jun-20	Jul-20	Aug-20	Sep-20	Oct-20	Nov-20	Dec-20
Whole sector	100	-0.29%	-0.66%	-1.00%	-2.92%	-3.75%	-2.78%	-3.22%	-3.18%	-2.49%	-2.35%	-0.60%	-0.60%	-0.47%
All buildings Total	0	-0.05%	-0.31%	-0.56%	-1.66%	-2.52%	-1.48%	-1.95%	-1.95%	-1.22%	-1.13%	0.69%	0.71%	0.64%
Residential buildings	30	-0.03%	-0.18%	-0.56%	-2.25%	-3.07%	-2.09%	-2.68%	-2.58%	-1.73%	-1.67%	0.50%	0.47%	0.80%
Formal	15	-0.42%	-0.95%	-1.52%	-2.64%	-3.88%	-2.50%	-3.04%	-3.27%	-2.62%	-2.14%	-0.12%	-0.01%	0.85%
Own-account	15	0.37%	0.60%	0.42%	-1.85%	-2.25%	-1.67%	-2.32%	-1.87%	-0.82%	-1.20%	1.13%	0.96%	0.75%
Non-res buildings	50	-0.06%	-0.38%	-0.56%	-1.32%	-2.20%	-1.12%	-1.53%	-1.59%	-0.92%	-0.82%	0.80%	0.85%	0.56%
Civil works	20	-1.26%	-2.07%	-2.76%	-7.99%	-8.65%	-8.02%	-8.34%	-8.11%	-7.60%	-7.28%	-5.81%	-5.89%	-5.03%
Roads paved	10	-0.85%	-1.20%	-1.24%	-7.13%	-7.65%	-7.09%	-7.45%	-7.13%	-6.69%	-6.50%	-4.92%	-5.17%	-4.80%
Roads gravel	5	-2.89%	-2.36%	-2.38%	-10.68%	-11.50%	-10.97%	-11.13%	-10.61%	-9.94%	-9.91%	-8.59%	-8.51%	-8.47%
Water projects	5	-0.38%	-3.63%	-6.43%	-6.96%	-7.76%	-6.89%	-7.27%	-7.54%	-7.07%	-6.14%	-4.77%	-4.68%	-1.88%
Percentage change since previous month														
Sector	Weights	Dec-19	Jan-20	Feb-20	Mar-20	Apr-20	May-20	Jun-20	Jul-20	Aug-20	Sep-20	Oct-20	Nov-20	Dec-20
Whole sector	100	0.03%	-0.22%	-0.33%	-1.98%	-0.88%	1.15%	-0.39%	-0.06%	0.51%	0.09%	1.60%	-0.04%	0.07%
All buildings Total	0	0.05%	-0.28%	-0.21%	-1.07%	-0.93%	1.25%	-0.42%	-0.08%	0.58%	0.08%	1.69%	-0.04%	0.04%
Residential buildings	30	0.09%	0.08%	-0.33%	-1.61%	-0.99%	1.31%	-0.49%	-0.06%	0.68%	0.06%	1.98%	-0.09%	0.29%
Formal	15	0.06%	0.27%	-0.62%	-1.13%	-1.25%	1.59%	-0.53%	-0.33%	0.41%	0.49%	1.87%	-0.02%	0.11%
Own-account	15	0.11%	-0.11%	-0.04%	-2.10%	-0.72%	1.03%	-0.45%	0.20%	0.95%	-0.38%	2.09%	-0.17%	0.47%
Non-res buildings	50	0.03%	-0.48%	-0.13%	-0.75%	-0.89%	1.21%	-0.38%	-0.09%	0.53%	0.10%	1.52%	0.00%	-0.10%
Civil works	20	-0.07%	0.00%	-0.83%	-5.70%	-0.66%	0.72%	-0.23%	0.03%	0.20%	0.14%	1.20%	-0.04%	0.17%
Roads paved	10	0.23%	0.41%	-0.19%	-6.33%	-0.44%	0.64%	-0.22%	-0.03%	0.06%	0.01%	1.29%	-0.18%	0.29%
Roads gravel	5	-0.74%	0.30%	-0.23%	-9.03%	-0.95%	0.59%	-0.11%	0.54%	0.40%	-0.40%	0.96%	0.24%	-0.71%
Water projects	5	0.03%	-1.19%	-2.87%	-0.56%	-0.85%	1.04%	-0.37%	-0.34%	0.30%	0.96%	1.28%	-0.02%	0.82%

Statistical Release Table A
Construction sector price indices

Jan-Mar 2006 = 100

	Whole sector		All buildings		Residential buildings					
					Total		Formal		Own-account	
	2019	2020	2019	2020	2019	2020	2019	2020	2019	2020
Year	244.90	240.00	238.30	236.18	217.60	214.88	251.68	247.09	184.07	182.83
Q1	245.15	241.44	238.29	236.31	217.65	215.50	252.07	247.80	183.87	183.38
Q2	245.35	237.38	238.62	233.89	218.02	212.32	252.41	244.48	184.25	180.42
Q3	244.96	238.42	238.40	234.98	217.74	213.40	251.89	245.14	184.15	181.77
Q4	244.14	242.78	237.90	239.52	216.99	218.27	250.36	250.95	184.02	185.76
Jan	245.10	243.57	238.11	237.48	217.47	217.15	252.08	249.77	183.55	184.72
Feb	245.22	242.77	238.33	236.99	217.65	216.43	252.05	248.21	183.87	184.64
Mar	245.13	237.97	238.42	234.46	217.84	212.93	252.07	245.41	184.18	180.77
Apr	245.06	235.88	238.30	232.29	217.52	210.83	252.13	242.34	183.59	179.46
May	245.41	238.59	238.71	235.18	218.16	213.59	252.52	246.20	184.39	181.30
Jun	245.59	237.67	238.85	234.19	218.40	212.54	252.56	244.89	184.77	180.48
Jul	245.33	237.53	238.66	234.01	218.02	212.40	252.34	244.08	184.29	180.85
Aug	244.84	238.75	238.27	235.38	217.60	213.84	251.66	245.07	184.08	182.57
Sep	244.73	238.97	238.26	235.57	217.61	213.96	251.68	246.28	184.08	181.88
Oct	244.25	242.79	237.91	239.54	217.11	218.20	251.19	250.89	183.60	185.68
Nov	244.16	242.70	237.77	239.46	216.97	217.99	250.87	250.84	183.59	185.36
Dec	244.02	242.86	238.03	239.56	216.90	218.63	249.02	251.12	184.86	186.24

	Non-res buildings		Civil works		Roads paved		Roads gravel		Water projects	
	2019	2020	2019	2020	2019	2020	2019	2020	2019	2020
Year	250.63	248.92	280.01	261.92	291.23	274.98	301.16	274.82	244.09	229.62
Q1	250.57	248.72	281.52	269.51	292.79	283.48	303.58	288.02	244.71	230.83
Q2	250.88	246.82	281.10	257.67	292.48	270.86	302.16	268.32	244.96	227.06
Q3	250.70	247.92	279.89	258.44	290.75	271.05	301.04	270.47	244.61	227.69
Q4	250.37	252.21	277.54	262.05	288.88	274.55	297.87	272.48	242.09	232.91
Jan	250.39	249.57	282.07	276.23	293.46	289.95	304.59	297.41	244.67	235.78
Feb	250.65	249.24	281.72	273.95	293.02	289.40	303.94	296.72	244.73	229.01
Mar	250.67	247.36	280.76	258.34	291.90	271.10	302.20	269.93	244.74	227.72
Apr	250.69	245.16	280.93	256.63	292.27	269.91	302.12	267.37	244.77	225.78
May	250.94	248.13	281.03	258.48	292.35	271.63	302.09	268.94	245.00	228.12
Jun	251.01	247.18	281.34	257.89	292.83	271.03	302.28	268.65	245.10	227.28
Jul	250.95	246.97	280.75	257.98	291.75	270.93	302.17	270.11	244.98	226.51
Aug	250.59	248.28	279.76	258.49	290.53	271.09	301.12	271.20	244.47	227.18
Sep	250.56	248.52	279.17	258.85	289.97	271.13	299.83	270.11	244.39	229.37
Oct	250.30	252.30	278.14	261.97	288.83	274.61	298.32	272.70	243.96	232.32
Nov	250.16	252.29	278.26	261.87	289.05	274.12	298.75	273.34	243.67	232.26
Dec	250.64	252.04	276.22	262.32	288.76	274.91	296.53	271.41	238.63	234.16

Source: Uganda Bureau of Statistics

Statistical Release Table B

Basic heading price indices, CPI Rescaled and Equipment charge out rates and cement quantities

Jan-Mar 2006 = 100

	Timber		Paint		PVC/HDPE pipes		Water tanks		Burnt clay bricks & tiles	
	2019	2020	2019	2020	2019	2020	2019	2020	2019	2020
Year	263.04	275.34	196.39	209.95	186.74	161.37	155.54	142.52	284.95	257.64
Q1	258.43	270.72	198.13	209.95	187.15	163.73	156.73	142.52	287.00	257.63
Q2	261.50	273.80	198.14	209.95	187.15	158.99	156.73	142.52	287.62	257.63
Q3	264.58	276.87	197.31	209.95	187.15	159.85	156.73	142.52	287.58	257.63
Q4	267.65	279.95	191.98	209.95	185.50	162.94	151.99	142.52	277.60	257.66
Jan	257.40	269.70	198.16	209.95	187.15	173.21	156.73	142.52	285.24	257.63
Feb	258.43	270.72	198.10	209.95	187.15	158.99	156.73	142.52	287.88	257.63
Mar	259.45	271.75	198.14	209.95	187.15	158.99	156.73	142.52	287.88	257.63
Apr	260.48	272.77	198.14	209.95	187.15	158.99	156.73	142.52	287.88	257.63
May	261.50	273.80	198.14	209.95	187.15	158.99	156.73	142.52	287.41	257.63
Jun	262.53	274.82	198.14	209.95	187.15	158.99	156.73	142.52	287.58	257.63
Jul	263.55	275.85	198.14	209.95	187.15	158.99	156.73	142.52	287.58	257.63
Aug	264.58	276.87	197.13	209.95	187.15	158.99	156.73	142.52	287.58	257.63
Sep	265.60	277.90	196.66	209.95	187.15	161.57	156.73	142.52	287.58	257.63
Oct	266.63	278.92	196.58	209.95	187.15	161.57	156.73	142.52	287.58	257.63
Nov	267.65	279.95	196.58	209.95	187.15	161.57	156.73	142.52	287.58	257.63
Dec	268.68	280.97	182.78	209.96	182.21	165.67	142.52	142.52	257.63	257.72

	Cement		Concrete articles		Steel bars		Roofing sheets		Other iron & steel	
	2019	2020	2019	2020	2019	2020	2019	2020	2019	2020
Year	171.93	167.07	226.65	216.21	280.22	269.97	233.43	226.92	223.21	219.26
Q1	173.69	167.07	226.98	216.21	283.82	269.83	237.70	226.21	229.10	217.23
Q2	172.86	167.07	226.90	216.21	282.97	269.83	238.44	229.46	229.03	219.44
Q3	171.48	167.07	227.77	216.21	280.91	269.82	232.22	226.10	223.92	212.70
Q4	169.71	167.07	224.96	216.21	273.19	270.41	225.37	225.89	210.79	227.65
Jan	173.40	167.07	226.98	216.21	284.80	269.83	238.46	223.67	229.89	216.52
Feb	173.83	167.07	226.98	216.21	283.10	269.83	237.04	223.61	228.73	216.40
Mar	173.83	167.07	226.98	216.21	283.57	269.83	237.59	231.36	228.66	218.78
Apr	173.83	167.07	226.98	216.21	283.58	269.83	238.50	230.27	229.09	218.03
May	172.37	167.07	226.76	216.21	282.82	269.83	238.91	229.75	229.14	221.40
Jun	172.37	167.07	226.98	216.21	282.49	269.83	237.91	228.38	228.85	218.88
Jul	172.37	167.07	226.98	216.21	282.38	269.83	234.02	226.16	227.41	207.61
Aug	171.03	167.07	226.98	216.21	282.37	269.80	233.58	225.93	222.49	207.61
Sep	171.03	167.07	229.34	216.21	277.98	269.83	229.06	226.21	221.87	222.89
Oct	171.03	167.07	229.33	216.21	274.88	269.74	226.97	225.22	217.67	228.26
Nov	171.03	167.07	229.33	216.21	274.88	270.77	226.97	226.45	214.24	227.35
Dec	167.07	167.08	216.21	216.21	269.83	270.74	222.17	226.00	200.47	227.35

Source: Uganda Bureau of Statistics

Statistical Release Table B (continued)

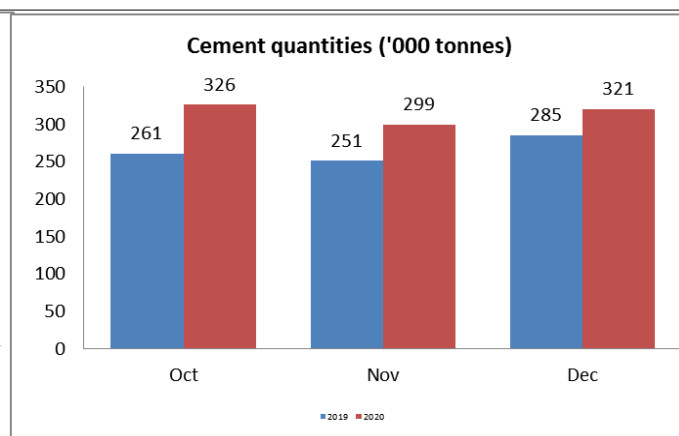
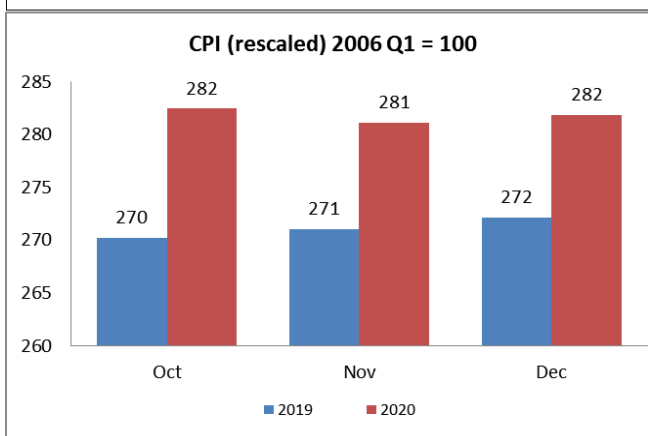
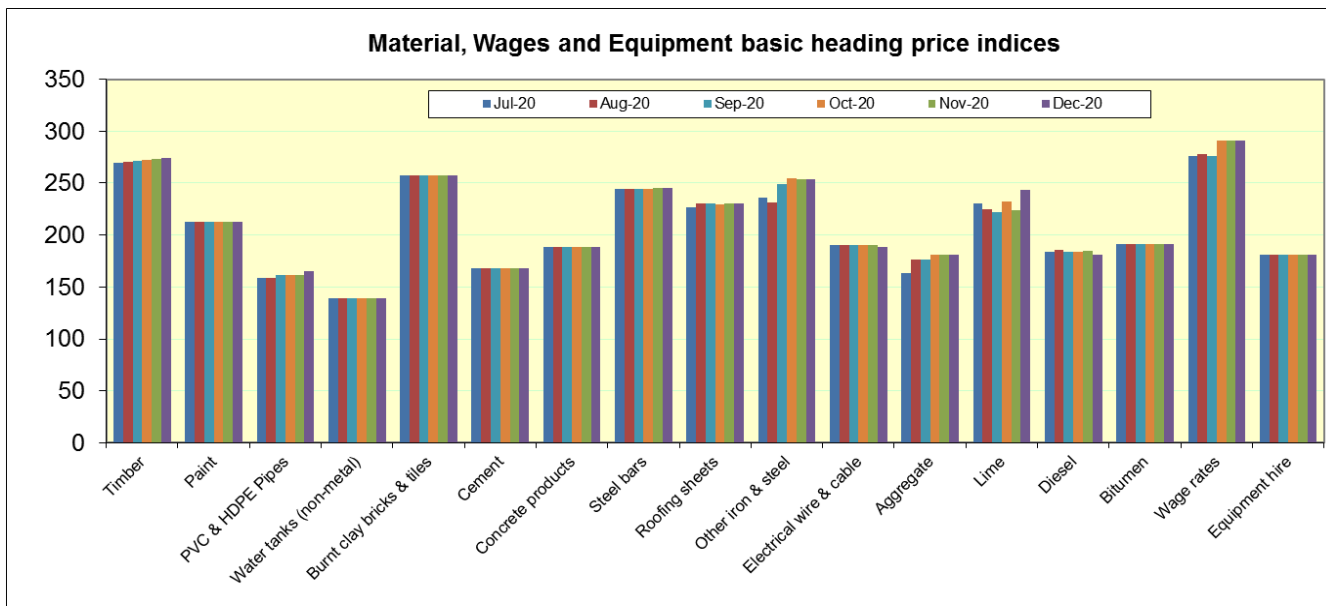
Basic heading price indices, CPI Rescaled and Equipment charge out rates and cement quantities

Jan-Mar 2006 = 100

	Electrical wire & cable		Aggregate		Lime		Diesel		Bitumen	
	2019	2020	2019	2020	2019	2020	2019	2020	2019	2020
Year	202.98	187.09	111.25	142.83	228.26	230.45	276.31	221.32	186.31	160.62
Q1	203.33	185.19	108.89	137.26	230.88	225.12	282.46	249.14	187.22	179.61
Q2	203.48	187.71	108.89	137.26	230.70	234.19	278.63	210.32	188.16	154.62
Q3	203.47	187.71	108.89	144.70	227.29	227.46	275.52	213.63	183.52	154.12
Q4	201.65	187.74	118.35	152.09	224.15	235.04	268.62	212.17	186.35	154.13
Jan	203.05	184.95	108.89	137.26	233.26	225.92	284.63	268.02	187.25	192.01
Feb	203.47	184.85	108.89	137.26	232.16	226.54	283.23	267.63	187.14	192.01
Mar	203.47	185.78	108.89	137.26	227.23	222.92	279.50	211.77	187.28	154.81
Apr	203.48	187.71	108.89	137.26	230.10	234.93	279.33	211.05	188.12	154.82
May	203.48	187.71	108.89	137.26	229.08	233.00	278.34	209.47	188.24	154.90
Jun	203.48	187.71	108.89	137.26	232.94	234.64	278.22	210.45	188.10	154.15
Jul	203.47	187.71	108.89	137.26	231.14	232.19	277.99	213.10	183.52	154.13
Aug	203.47	187.71	108.89	148.42	225.39	226.30	275.74	214.70	183.52	154.11
Sep	203.46	187.71	108.89	148.42	225.35	223.90	272.83	213.10	183.52	154.13
Oct	203.47	188.28	108.89	152.09	222.13	234.31	269.58	212.63	183.52	154.12
Nov	203.47	188.28	108.89	152.09	224.87	225.18	270.51	214.01	183.52	154.14
Dec	198.01	186.67	137.26	152.09	225.45	245.62	265.76	209.88	192.01	154.13

	Labour wage rates		Equipment charge out rates		CPI (rescaled) 2006 Q1 = 100		Cement quantities ('000 tonnes)	
	2019	2020	2019	2020	2019	2020	2019	2020
Year	341.97	331.28	277.58	280.02	267.80	277.97	3071.80	3556.29
Q1	340.02	337.28	277.23	278.25	264.16	272.78	701.80	857.93
Q2	341.92	320.77	277.40	280.73	267.77	276.84	761.57	744.46
Q3	342.98	325.08	277.79	280.55	268.13	280.46	811.74	1007.94
Q4	342.98	341.98	277.89	280.55	271.14	281.81	796.70	945.96
Jan	340.02	343.16	277.23	277.39	263.32	272.32	237.95	298.33
Feb	340.02	343.16	277.23	276.20	264.00	272.91	203.02	265.65
Mar	340.02	325.53	277.23	281.15	265.18	273.09	260.83	293.95
Apr	340.02	311.56	277.23	281.15	267.23	275.93	240.89	194.01
May	342.77	327.72	277.23	280.52	268.18	275.66	273.15	264.03
Jun	342.98	323.02	277.73	280.52	267.91	278.94	247.53	286.42
Jul	342.98	324.36	277.73	280.55	266.82	279.35	263.97	335.35
Aug	342.98	326.53	277.73	280.55	267.90	280.12	279.55	345.05
Sep	342.98	324.36	277.89	280.55	269.68	281.93	268.22	327.54
Oct	342.98	341.98	277.89	280.55	270.19	282.47	260.71	326.00
Nov	342.98	341.98	277.89	280.55	271.07	281.11	251.04	299.28
Dec	342.98	341.98	277.89	280.55	272.16	281.84	284.95	320.68

Source: Uganda Bureau of Statistics



Explanatory Notes on the Statistical Release

The data presented in this Statistical Release are indices designed to show price changes in each period. On page 1 there is a short commentary highlighting the main changes observed.

The graphs on page 1 are derived from Table A “Construction Sector Price Indices” on page 4 of the statistical release. The first graph shows the price changes for the whole sector for each month for the one year. The second graph shows the monthly average price indices in each month for the whole sector and the major sub-sectors.

The charts on page 6 above show the indices for the latest Six months for each basic heading. The Consumer Price Index (CPI, rescaled) and the quantity of cement for the domestic market are also shown. (Rescaling means multiplying or dividing the original series by a constant factor so as to compare with the current trends in say CPI)

If the bars in the charts are at almost the same level, then they indicate very little (if any) change in prices. An increase in the height of the bars indicates an increase in the prices while a reduction in the height implies a decline in prices.