



STATISTICAL RELEASE

UGANDA BUREAU OF STATISTICS



Construction Sector Indices

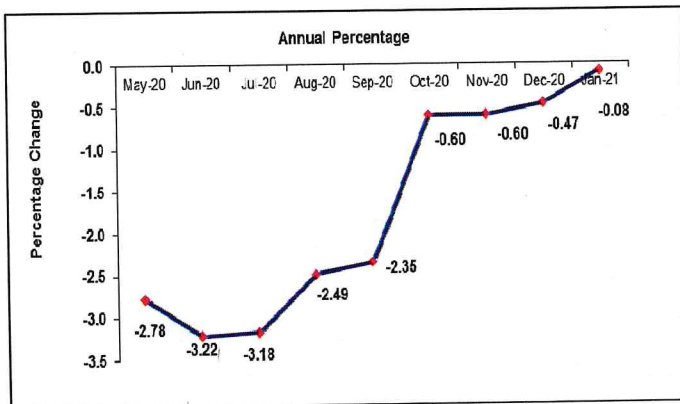
January 2021

HIGHLIGHTS

Annual Changes:

The average input prices for the Whole Construction Sector (covering material prices, wage rates & equipment hire rates) decreased by 0.08% for the year ending January 2021 compared to 0.47% decrease for the year ended December 2020.

Fig 1: Annual Price Changes at the Whole Construction Sector Index, May 2020 to January 2021



The main contributor to the annual decrease in input prices of 0.08% was:

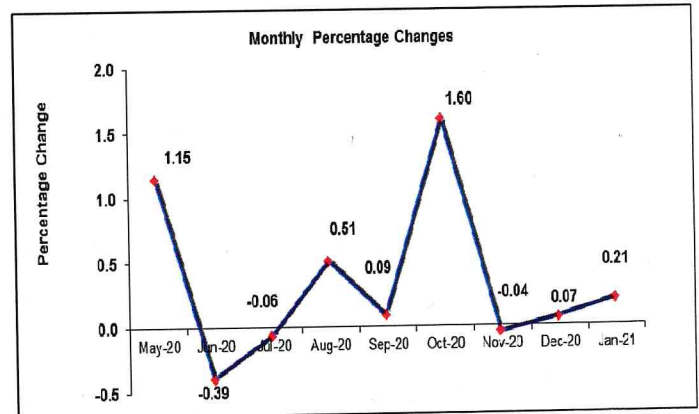
- A decrease of 4.88% in prices of inputs for Civil Works driven by a 5.17%, and 8.92% fall in input prices for Roads Paved and Roads Gravel respectively.

Monthly Changes

On a month to month basis, prices of inputs into the Whole Construction Sector registered an increase of 0.21% in the month of January 2021 compared to a 0.07% increase registered for the month of December 2020. This was mainly due to;

- A 0.24% and 0.19 increase in prices of inputs into the Non Residential Buildings and Residential Buildings respectively.
- An increase of 0.16% in prices of inputs for Civil Works driven by 0.02% and 0.82% input prices for paved roads and water projects respectively.

Fig 2: Monthly Price Changes at the Whole Construction Sector Index, January 2020 to January 2021



Material Inputs (Basic Headings) - Monthly Changes

Monthly, prices of material inputs and equipment hire in January 2021 showed increasing trends. Those with notable increases were;

- Steel bars prices increased by 0.19%
- Other Iron & Steel increased by 4.40%
- Roofing sheets increased by 0.47%
- PVC & HDPE Pipes by 1.23%

Imelda Atai Musana (PhD)
For: EXECUTIVE DIRECTOR

Thursday 4th March 2021

Notes: 1 This release contains composite input price indices for the construction sector and their "basic heading" Components.

2. To obtain the percentage change in prices between any two periods, divide the index number in the second period by the index number in the first period, subtract 1 and multiply the result by 100.

3. Comments can be addressed to: Mr Peter Opio, Director, Business & Industry Statistics, Uganda Bureau of Statistics on email peter.opio@ubos.org & phone no: 0414 706016 or 0711 706017 (Mob).

The next release date will be communicated

Percentage change since previous year														
Sector	Weights	Jan-20	Feb-20	Mar-20	Apr-20	May-20	Jun-20	Jul-20	Aug-20	Sep-20	Oct-20	Nov-20	Dec-20	Jan-21
Whole sector	100	-0.66%	-1.00%	-2.92%	-3.75%	-2.78%	-3.22%	-3.18%	-2.49%	-2.35%	-0.60%	-0.60%	-0.47%	-0.08%
All buildings Total	0	-0.31%	-0.56%	-1.66%	-2.52%	-1.48%	-1.95%	-1.95%	-1.22%	-1.13%	0.69%	0.71%	0.64%	1.10%
Residential buildings	30	-0.18%	-0.56%	-2.25%	-3.07%	-2.09%	-2.68%	-2.58%	-1.73%	-1.67%	0.50%	0.47%	0.80%	0.87%
Formal	15	-0.95%	-1.52%	-2.64%	-3.88%	-2.50%	-3.04%	-3.27%	-2.62%	-2.14%	-0.12%	-0.01%	0.85%	1.09%
Own-account	15	0.60%	0.42%	-1.85%	-2.25%	-1.67%	-2.32%	-1.87%	-0.82%	-1.20%	1.13%	0.96%	0.75%	0.65%
Non-res buildings	50	-0.38%	-0.56%	-1.32%	-2.20%	-1.12%	-1.53%	-1.59%	-0.92%	-0.82%	0.80%	0.85%	0.56%	1.23%
Civil works	20	-2.07%	-2.76%	-7.99%	-8.65%	-8.02%	-8.34%	-8.11%	-7.60%	-7.28%	-5.81%	-5.89%	-5.03%	-4.88%
Roads paved	10	-1.20%	-1.24%	-7.13%	-7.65%	-7.09%	-7.45%	-7.13%	-6.69%	-6.50%	-4.92%	-5.17%	-4.80%	-5.17%
Roads gravel	5	-2.36%	-2.38%	-10.68%	-11.50%	-10.97%	-11.13%	-10.61%	-9.94%	-9.91%	-8.59%	-8.51%	-8.47%	-8.92%
Water projects	5	-3.63%	-6.43%	-6.96%	-7.76%	-6.89%	-7.27%	-7.54%	-7.07%	-6.14%	-4.77%	-4.68%	-1.88%	0.13%
Percentage change since previous month														
Sector	Weights	Jan-20	Feb-20	Mar-20	Apr-20	May-20	Jun-20	Jul-20	Aug-20	Sep-20	Oct-20	Nov-20	Dec-20	Jan-21
Whole sector	100	-0.22%	-0.33%	-1.98%	-0.88%	1.15%	-0.39%	-0.06%	0.51%	0.09%	1.60%	-0.04%	0.07%	0.21%
All buildings Total	0	-0.28%	-0.21%	-1.07%	-0.93%	1.25%	-0.42%	-0.08%	0.58%	0.08%	1.69%	-0.04%	0.04%	0.22%
Residential buildings	30	0.08%	-0.33%	-1.61%	-0.99%	1.31%	-0.49%	-0.06%	0.68%	0.06%	1.98%	-0.09%	0.29%	0.19%
Formal	15	0.27%	-0.62%	-1.13%	-1.25%	1.59%	-0.53%	-0.33%	0.41%	0.49%	1.87%	-0.02%	0.11%	0.55%
Own-account	15	-0.11%	-0.04%	-2.10%	-0.72%	1.03%	-0.45%	0.20%	0.95%	-0.38%	2.09%	-0.17%	0.47%	-0.17%
Non-res buildings	50	-0.48%	-0.13%	-0.75%	-0.89%	1.21%	-0.38%	-0.09%	0.53%	0.10%	1.52%	0.00%	-0.10%	0.24%
Civil works	20	0.00%	-0.83%	-5.70%	-0.66%	0.72%	-0.23%	0.03%	0.20%	0.14%	1.20%	-0.04%	0.17%	0.16%
Roads paved	10	0.41%	-0.19%	-6.33%	-0.44%	0.64%	-0.22%	-0.03%	0.06%	0.01%	1.29%	-0.18%	0.29%	0.02%
Roads gravel	5	0.30%	-0.23%	-9.03%	-0.95%	0.59%	-0.11%	0.54%	0.40%	-0.40%	0.96%	0.24%	-0.71%	-0.20%
Water projects	5	-1.19%	-2.87%	-0.56%	-0.85%	1.04%	-0.37%	-0.34%	0.30%	0.96%	1.28%	-0.02%	0.82%	0.82%

Statistical Release Table A
Construction sector price indices

Jan-Mar 2006 = 100

	Whole sector		All buildings		Residential buildings						
					Total		Formal		Own-account		
	2020	2021	2020	2021	2020	2021	2020	2021	2020	2021	
Year	240.00		236.18		214.88		247.09		182.83		
Q1	241.44		236.31		215.50		247.80		183.38		
Q2	237.38		233.89		212.32		244.48		180.42		
Q3	238.42		234.98		213.40		245.14		181.77		
Q4	242.78		239.52		218.27		250.95		185.76		
Jan	243.57	243.37	237.48	240.09	217.15	219.05	249.77	252.50	184.72	185.92	
Feb	242.77		236.99		216.43		248.21		184.64		
Mar	237.97		234.46		212.93		245.41		180.77		
Apr	235.88		232.29		210.83		242.34		179.46		
May	238.59		235.18		213.59		246.20		181.30		
Jun	237.67		234.19		212.54		244.89		180.48		
Jul	237.53		234.01		212.40		244.08		180.85		
Aug	238.75		235.38		213.84		245.07		182.57		
Sep	238.97		235.57		213.96		246.28		181.88		
Oct	242.79		239.54		218.20		250.89		185.68		
Nov	242.70		239.46		217.99		250.84		185.36		
Dec	242.86		239.56		218.63		251.12		186.24		

	Non-res buildings		Civil works		Roads paved		Roads gravel		Water projects		
	2020	2021	2020	2021	2020	2021	2020	2021	2020	2021	
	Year	248.92		261.92		274.98		274.82		229.62	
Q1	248.72		269.51		283.48		288.02		230.83		
Q2	246.82		257.67		270.86		268.32		227.06		
Q3	247.92		258.44		271.05		270.47		227.69		
Q4	252.21		262.05		274.55		272.48		232.91		
Jan	249.57	252.64	276.23	262.75	289.95	274.97	297.41	270.88	235.78	236.08	
Feb	249.24		273.95		289.40		296.72		229.01		
Mar	247.36		258.34		271.10		269.93		227.72		
Apr	245.16		256.63		269.91		267.37		225.78		
May	248.13		258.48		271.63		268.94		228.12		
Jun	247.18		257.89		271.03		268.65		227.28		
Jul	246.97		257.98		270.93		270.11		226.51		
Aug	248.28		258.49		271.09		271.20		227.18		
Sep	248.52		258.85		271.13		270.11		229.37		
Oct	252.30		261.97		274.61		272.70		232.32		
Nov	252.29		261.87		274.12		273.34		232.26		
Dec	252.04		262.32		274.91		271.41		234.16		

Source: Uganda Bureau of Statistics

Statistical Release Table B

Basic heading price indices, CPI Rescaled and Equipment charge out rates and cement quantities

Jan-Mar 2006 = 100

	Timber		Paint		PVC/HDPE pipes		Water tanks		Burnt clay bricks & tiles	
	2020	2021	2020	2021	2020	2021	2020	2021	2020	2021
Year	275.34		209.95		161.37		142.52		257.64	
Q1	270.72		209.95		163.73		142.52		257.63	
Q2	273.80		209.95		158.99		142.52		257.63	
Q3	276.87		209.95		159.85		142.52		257.63	
Q4	279.95		209.95		162.94		142.52		257.66	
Jan	269.70	282.00	209.95	209.96	173.21	167.71	142.52	142.52	257.63	257.72
Feb	270.72		209.95		158.99		142.52		257.63	
Mar	271.75		209.95		158.99		142.52		257.63	
Apr	272.77		209.95		158.99		142.52		257.63	
May	273.80		209.95		158.99		142.52		257.63	
Jun	274.82		209.95		158.99		142.52		257.63	
Jul	275.85		209.95		158.99		142.52		257.63	
Aug	276.87		209.95		158.99		142.52		257.63	
Sep	277.90		209.95		161.57		142.52		257.63	
Oct	278.92		209.95		161.57		142.52		257.63	
Nov	279.95		209.95		161.57		142.52		257.63	
Dec	280.97		209.96		165.67		142.52		257.72	

	Cement		Concrete articles		Steel bars		Roofing sheets		Other iron & steel	
	2020	2021	2020	2021	2020	2021	2020	2021	2020	2021
Year	167.07		216.21		269.97		226.92		219.26	
Q1	167.07		216.21		269.83		226.21		217.23	
Q2	167.07		216.21		269.83		229.46		219.44	
Q3	167.07		216.21		269.82		226.10		212.70	
Q4	167.07		216.21		270.41		225.89		227.65	
Jan	167.07	167.08	216.21	216.21	269.83	271.24	223.67	227.06	216.52	237.36
Feb	167.07		216.21		269.83		223.61		216.40	
Mar	167.07		216.21		269.83		231.36		218.78	
Apr	167.07		216.21		269.83		230.27		218.03	
May	167.07		216.21		269.83		229.75		221.40	
Jun	167.07		216.21		269.83		228.38		218.88	
Jul	167.07		216.21		269.83		226.16		207.61	
Aug	167.07		216.21		269.80		225.93		207.61	
Sep	167.07		216.21		269.83		226.21		222.89	
Oct	167.07		216.21		269.74		225.22		228.26	
Nov	167.07		216.21		270.77		226.45		227.35	
Dec	167.08		216.21		270.74		226.00		227.35	

Source: Uganda Bureau of Statistics

Statistical Release Table B (continued)

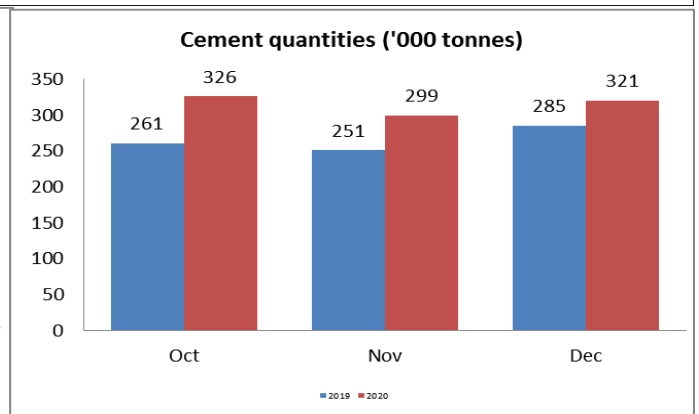
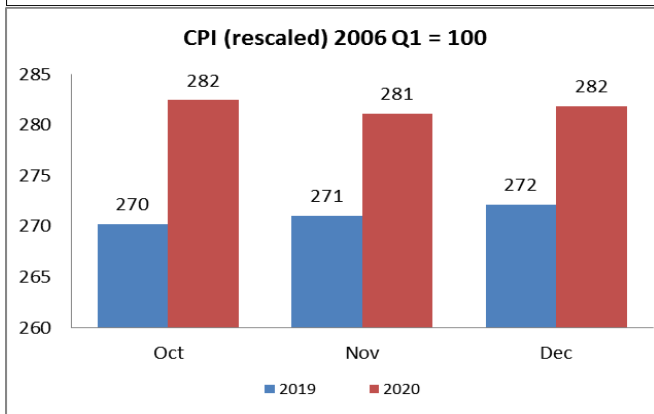
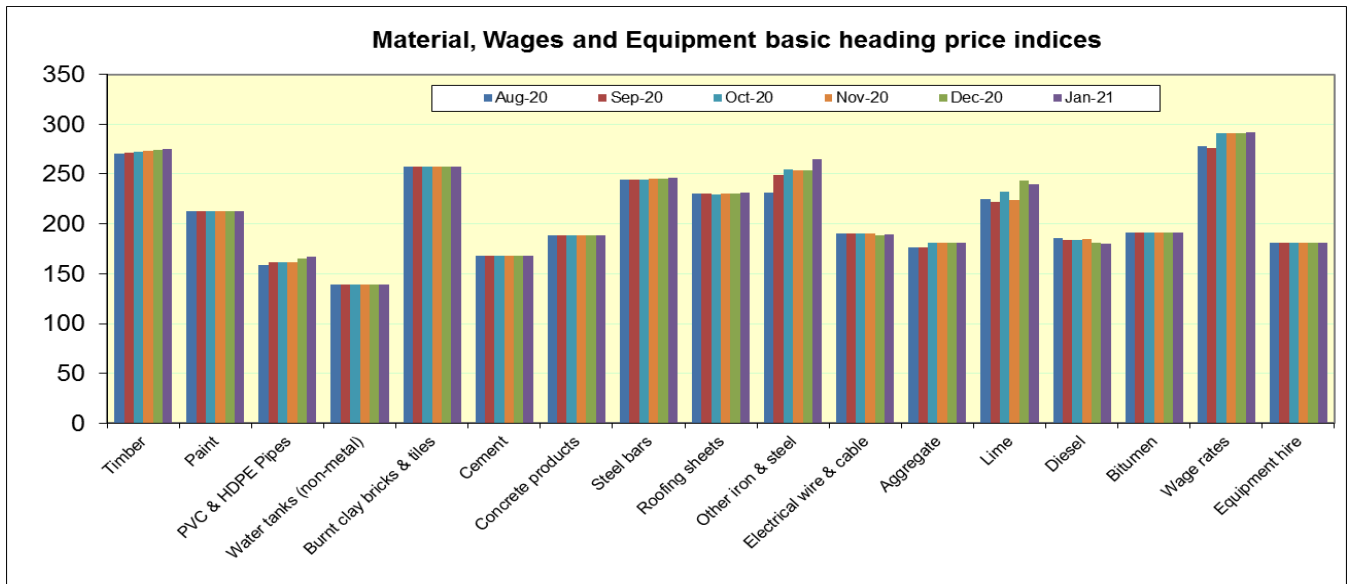
Basic heading price indices, CPI Rescaled and Equipment charge out rates and cement quantities

Jan-Mar 2006 = 100

	Electrical wire & cable		Aggregate		Lime		Diesel		Bitumen	
	2020	2021	2020	2021	2020	2021	2020	2021	2020	2021
Year	187.09		142.83		230.45		221.32		160.62	
Q1	185.19		137.26		225.12		249.14		179.61	
Q2	187.71		137.26		234.19		210.32		154.62	
Q3	187.71		144.70		227.46		213.63		154.12	
Q4	187.74		152.09		235.04		212.17		154.13	
Jan	184.95	186.71	137.26	152.09	225.92	241.44	268.02	208.41	192.01	154.10
Feb	184.85		137.26		226.54		267.63		192.01	
Mar	185.78		137.26		222.92		211.77		154.81	
Apr	187.71		137.26		234.93		211.05		154.82	
May	187.71		137.26		233.00		209.47		154.90	
Jun	187.71		137.26		234.64		210.45		154.15	
Jul	187.71		137.26		232.19		213.10		154.13	
Aug	187.71		148.42		226.30		214.70		154.11	
Sep	187.71		148.42		223.90		213.10		154.13	
Oct	188.28		152.09		234.31		212.63		154.12	
Nov	188.28		152.09		225.18		214.01		154.14	
Dec	186.67		152.09		245.62		209.88		154.13	

	Labour wage rates		Equipment charge out rates		CPI (rescaled) 2006 Q1 = 100		Cement quantities ('000 tonnes)	
	2020	2021	2020	2021	2020	2021	2020	2021
Year	331.28		280.02		277.97		3556.29	
Q1	337.28		278.25		272.78		857.93	
Q2	320.77		280.73		276.84		744.46	
Q3	325.08		280.55		280.46		1007.94	
Q4	341.98		280.55		281.81		945.96	
Jan	343.16	342.93	277.39	280.55	272.32	282.28	298.33	
Feb	343.16		276.20		272.91		265.65	
Mar	325.53		281.15		273.09		293.95	
Apr	311.56		281.15		275.93		194.01	
May	327.72		280.52		275.66		264.03	
Jun	323.02		280.52		278.94		286.42	
Jul	324.36		280.55		279.35		335.35	
Aug	326.53		280.55		280.12		345.05	
Sep	324.36		280.55		281.93		327.54	
Oct	341.98		280.55		282.47		326.00	
Nov	341.98		280.55		281.11		299.28	
Dec	341.98		280.55		281.84		320.68	

Source: Uganda Bureau of Statistics



Explanatory Notes on the Statistical Release

The data presented in this Statistical Release are indices designed to show price changes in each period. On page 1 there is a short commentary highlighting the main changes observed.

The graphs on page 1 are derived from Table A “Construction Sector Price Indices” on page 4 of the statistical release. The first graph shows the price changes for the whole sector for each month for the one year. The second graph shows the monthly average price indices in each month for the whole sector and the major sub-sectors.

The charts on page 6 above show the indices for the latest Six months for each basic heading. The Consumer Price Index (CPI, rescaled) and the quantity of cement for the domestic market are also shown. (Rescaling means multiplying or dividing the original series by a constant factor so as to compare with the current trends in say CPI)

If the bars in the charts are at almost the same level, then they indicate very little (if any) change in prices. An increase in the height of the bars indicates an increase in the prices while a reduction in the height implies a decline in prices.