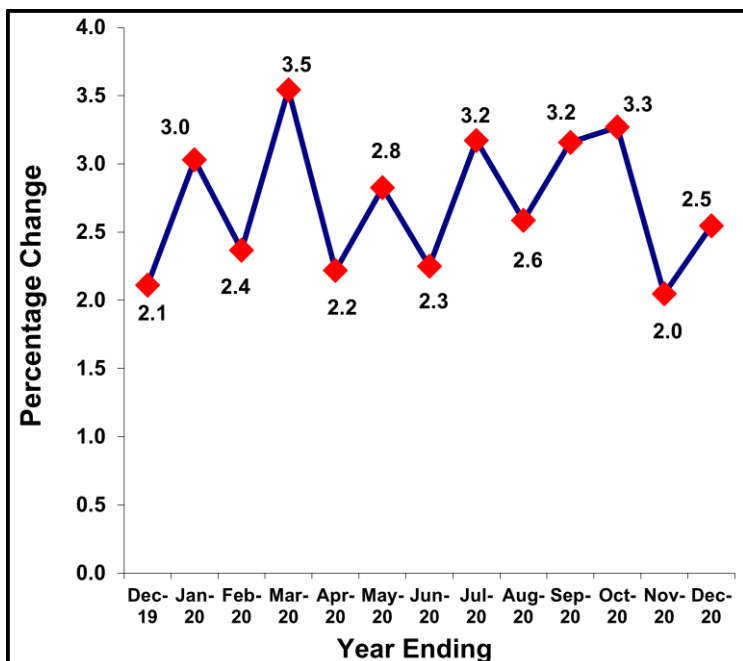


## HIGHLIGHTS

### Producer Prices for Manufacturing and Utilities Annual Changes

The Producer Prices for Manufactured Goods and Utilities increased by 2.5% for the year ending December 2020 compared to 2.0% increase recorded for the year ended November 2020.

**Figure 1: Annual changes in PPI-M&U, December 2019 – December 2020**



**The contributors to the 2.5 percent increase in Producer Prices in the Manufacturing and Utility sectors were;**

- An increase in the Producer Prices of Manufacturing sector by 2.8% for the year ending December 2020.
- An increase in the Producer Prices of Utility sector by 0.2% for the year ending December 2020.

### Monthly Changes

The monthly Producer Prices for Manufactured Goods and Utilities increased by 2.0% in December 2020 compared to 0.8% decrease that was registered in November 2020. This was attributed to the price increase of 2.3% in the Manufacturing Sector.

### Producer Price for the Manufacturing sector

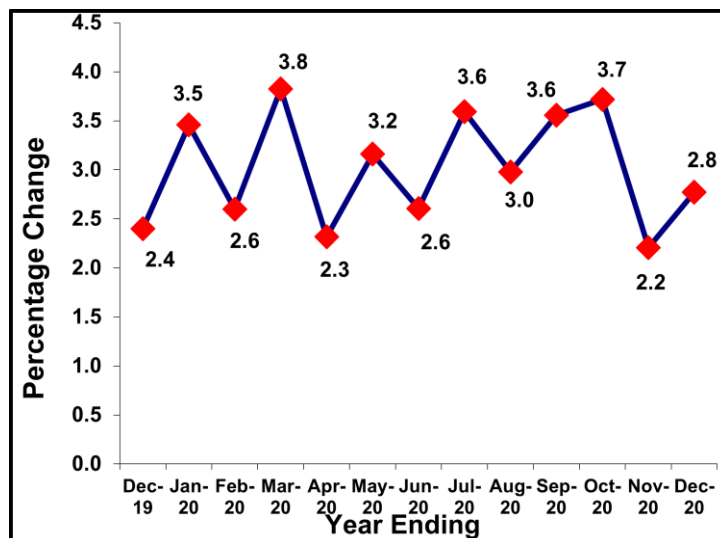
#### Annual Changes

The Annual Producer Price Indices for manufactured goods increased by 2.8% during the year ending December 2020 compared to 2.2% rise registered for the year ended November 2020.

**Main contributors to the 2.8 percent increase in Producer Prices in the Manufacturing sector were;**

- An increase of 2.3% in prices of Processed Food Products
- An increase of 0.7% in prices of Other Non-Metallic Products
- An increase of 3.7% in prices of Chemical Products
- An increase of 8.9% in prices of Wearing Apparel

**Figure 2: Annual changes in PPI-Manufacturing, December 2019 – December 2020**



### PPI- Manufacturing for the Domestic Market

#### Monthly Changes

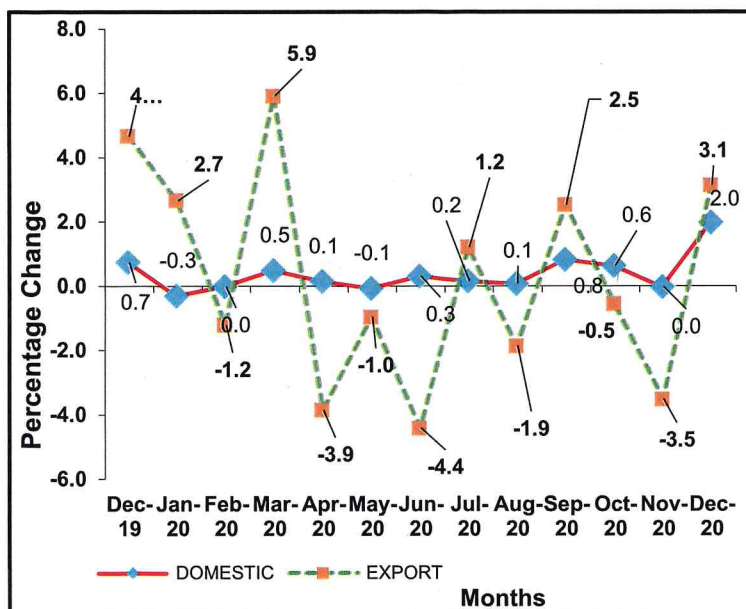
The monthly producer prices of goods produced for domestic market increased by 2.0% in December 2020 compared to relatively stable prices registered in November 2020. This was mainly attributed to an increase in prices of Food Products by 2.9%, Wearing Apparel by 3.6%, and Chemical Products by 0.3%.

### PPI- Manufacturing for the Export Market

#### Monthly Changes

Producer Prices for Exported Manufactured Products increased by 3.1% in December 2020 compared to a 3.5% decrease recorded in November 2020. This was attributed to the 4.1% increase in prices of Processed Food Products and 9.0% increase in prices of Leather Products.

**Figure 3: Monthly Changes in PPI-M, Domestic and Export  
December 2019 – December 2020**

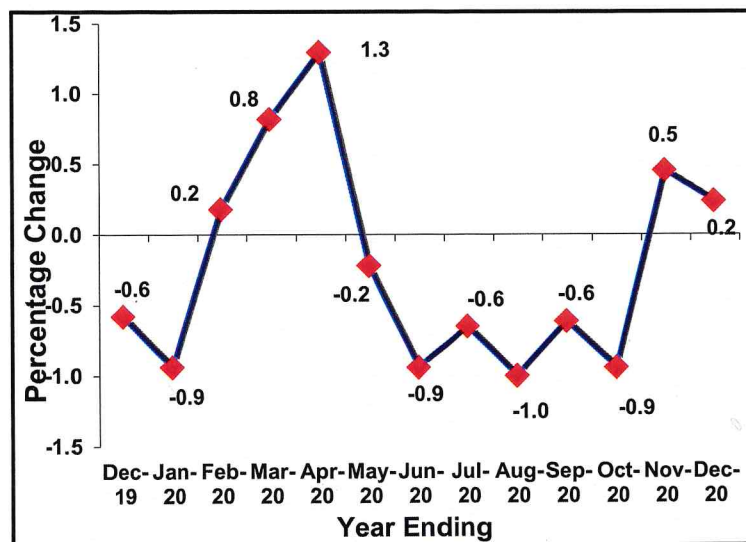


## Producer Price Index for Utilities sector

### Annual Changes

The annual Producer Prices for Utilities increased by 0.2% for the year ending December 2020 following a rise in prices of 0.5% registered for the year ended November 2020. This was attributed to the 0.3% increase in prices of Electricity Power Generation. (Table 1b)

**Figure 4: Annual changes in PPI-Utility December 2019 – December 2020**

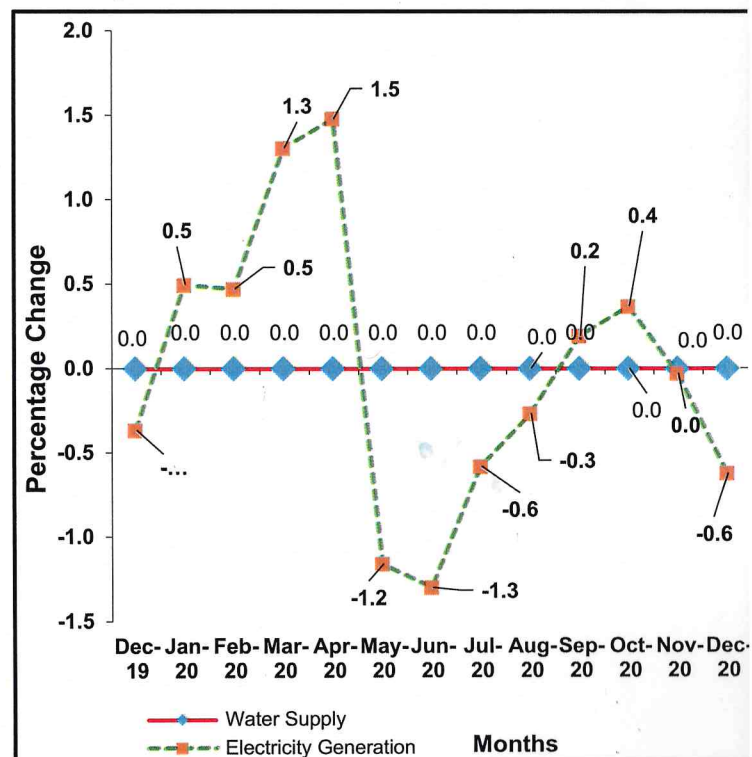


## Producer Price Index-Utilities

### Monthly Changes

The monthly Producer Prices for Utilities decreased by 0.5% in December 2020 as compared to relatively stable prices in November 2020. This was attributed to a 0.6% price decrease in Electricity Power Generation. (Table 1c)

**Figure 5: Monthly Changes in PPI-Utility, Water Supply and Electricity Generation December 2019 – December 2020**



**Imelda Atai Musana (PhD)**  
For: Executive Director  
Wednesday 3<sup>rd</sup> March 2021

**ISSUE (Monthly)**

87<sup>th</sup> Issue March 2021

**Expected Release Date**

27<sup>th</sup> January 2021

**Actual Release Date**

3<sup>rd</sup> March 2021

For More Information Contact  
Peter Opio (Mr)  
Head Business & Industry Statistics

Tel: 041-237550/371945/0414706016/15 Fax: 041-237553  
Email: [ubos@ubos.org](mailto:ubos@ubos.org) Mobile: 0782319690  
Website: [www.ubos.org](http://www.ubos.org)

Statistics House  
Plot 9, Colville Street, P.O. Box 7186, Kampala

**Table1a: Monthly Producer Price Index-Manufacturing and Utilities (PPI-M&U), December 2019 to December 2020**

Base period: July 2009 to June 2010=100

Industry Group	Weight	Dec-19	Jan-20	Feb-20	Mar-20	Apr-20	May-20	Jun-20	Jul-20	Aug-20	Sep-20	Oct-20	Nov-20	Dec-20
<b>PPI-MANUFACTURING AND UTILITIES (PPI -M&amp;U)</b>	<b>1000.000</b>	<b>1.5</b>	<b>0.5</b>	<b>-0.3</b>	<b>1.9</b>	<b>-0.8</b>	<b>-0.4</b>	<b>-1.0</b>	<b>0.3</b>	<b>-0.4</b>	<b>1.2</b>	<b>0.3</b>	<b>-0.8</b>	<b>2.0</b>
<b>PPI-MANUFACTURING</b>	<b>921.400</b>	<b>1.7</b>	<b>0.5</b>	<b>-0.4</b>	<b>2.0</b>	<b>-1.0</b>	<b>-0.4</b>	<b>-1.0</b>	<b>0.4</b>	<b>-0.4</b>	<b>1.3</b>	<b>0.3</b>	<b>-0.9</b>	<b>2.3</b>
<b>PPI-UTILITIES</b>	<b>78.600</b>	<b>-0.3</b>	<b>0.4</b>	<b>0.4</b>	<b>1.1</b>	<b>1.2</b>	<b>-1.0</b>	<b>-1.1</b>	<b>-0.5</b>	<b>-0.2</b>	<b>0.2</b>	<b>0.3</b>	<b>0.0</b>	<b>-0.5</b>
<b>PPI-MANUFACTURING</b>	<b>921.400</b>	<b>1.7</b>	<b>0.5</b>	<b>-0.4</b>	<b>2.0</b>	<b>-1.0</b>	<b>-0.4</b>	<b>-1.0</b>	<b>0.4</b>	<b>-0.4</b>	<b>1.3</b>	<b>0.3</b>	<b>-0.9</b>	<b>2.3</b>
<b>MANUFACTURE OF FOOD PRODUCTS</b>	<b>364.960</b>	<b>3.4</b>	<b>1.9</b>	<b>-0.6</b>	<b>3.3</b>	<b>-2.1</b>	<b>-0.5</b>	<b>-1.9</b>	<b>0.5</b>	<b>-0.9</b>	<b>1.1</b>	<b>0.0</b>	<b>-1.7</b>	<b>3.4</b>
<b>MANUFACTURE OF BEVERAGES</b>	<b>77.507</b>	<b>-0.4</b>	<b>-5.1</b>	<b>-0.1</b>	<b>0.3</b>	<b>0.1</b>	<b>0.0</b>	<b>-0.5</b>	<b>-0.3</b>	<b>-0.4</b>	<b>0.0</b>	<b>0.2</b>	<b>-0.1</b>	<b>-1.5</b>
<b>MANUFACTURE OF TOBACCO PRODUCTS</b>	<b>25.344</b>	<b>-0.4</b>	<b>0.7</b>	<b>-0.1</b>	<b>1.8</b>	<b>0.2</b>	<b>1.0</b>	<b>-1.0</b>	<b>-0.7</b>	<b>-0.5</b>	<b>0.3</b>	<b>0.5</b>	<b>-0.2</b>	<b>-0.8</b>
<b>MANUFACTURE OF TEXTILES</b>	<b>19.225</b>	<b>0.0</b>	<b>0.0</b>	<b>0.0</b>	<b>0.0</b>	<b>0.0</b>	<b>0.0</b>	<b>0.0</b>	<b>0.0</b>	<b>0.0</b>	<b>10.9</b>	<b>1.3</b>	<b>0.0</b>	<b>2.5</b>
<b>MANUFACTURE OF WEARING APPAREL</b>	<b>55.243</b>	<b>0.0</b>	<b>1.4</b>	<b>0.0</b>	<b>0.0</b>	<b>0.0</b>	<b>0.0</b>	<b>0.1</b>	<b>0.0</b>	<b>0.0</b>	<b>2.5</b>	<b>1.1</b>	<b>0.0</b>	<b>3.6</b>
<b>MANUFACTURE OF LEATHER &amp; RELATED PRODUCTS</b>	<b>15.917</b>	<b>-1.5</b>	<b>0.1</b>	<b>-0.1</b>	<b>1.8</b>	<b>0.2</b>	<b>-4.9</b>	<b>-0.9</b>	<b>-0.6</b>	<b>-0.3</b>	<b>0.3</b>	<b>-0.9</b>	<b>-0.2</b>	<b>5.9</b>
<b>MANUFACTURE OF WOOD AND PRODUCTS OF WOOD, CORK, EXCEPT FURNITURE</b>	<b>7.316</b>	<b>0.0</b>	<b>0.0</b>	<b>0.0</b>	<b>0.2</b>	<b>0.0</b>	<b>0.0</b>	<b>-0.1</b>	<b>-0.1</b>	<b>0.0</b>	<b>0.0</b>	<b>0.0</b>	<b>0.0</b>	<b>-0.1</b>
<b>MANUFACTURE OF PAPER &amp; PAPER PRODUCTS</b>	<b>15.858</b>	<b>2.9</b>	<b>1.1</b>	<b>-1.3</b>	<b>2.2</b>	<b>-1.1</b>	<b>-4.7</b>	<b>-0.8</b>	<b>-1.5</b>	<b>-0.5</b>	<b>-0.6</b>	<b>0.5</b>	<b>-0.2</b>	<b>-0.9</b>
<b>PRINTING AND REPRODUCTION OF RECORDED MEDIA</b>	<b>25.329</b>	<b>0.0</b>	<b>-13.9</b>	<b>0.0</b>	<b>0.0</b>	<b>0.0</b>	<b>0.0</b>	<b>0.0</b>	<b>0.0</b>	<b>0.0</b>	<b>0.0</b>	<b>0.0</b>	<b>0.0</b>	<b>0.0</b>
<b>MANUFACTURE OF CHEMICALS &amp; CHEMICAL PRODUCTS</b>	<b>72.487</b>	<b>1.1</b>	<b>-0.4</b>	<b>0.0</b>	<b>2.7</b>	<b>0.1</b>	<b>0.7</b>	<b>-0.1</b>	<b>-0.2</b>	<b>-0.2</b>	<b>-0.6</b>	<b>1.6</b>	<b>0.0</b>	<b>0.2</b>
<b>MANUFACTURE OF PHARMACEUTICALS, MEDICINAL CHEMICAL &amp; BOTANICAL PRODUCTS</b>	<b>23.736</b>	<b>-0.5</b>	<b>-1.1</b>	<b>0.0</b>	<b>-0.5</b>	<b>3.0</b>	<b>-0.1</b>	<b>3.1</b>	<b>5.7</b>	<b>1.2</b>	<b>1.5</b>	<b>0.0</b>	<b>-1.0</b>	<b>-0.1</b>
<b>MANUFACTURE OF RUBBER &amp; PLASTIC PRODUCTS</b>	<b>26.455</b>	<b>0.0</b>	<b>-1.1</b>	<b>0.0</b>	<b>0.2</b>	<b>-0.4</b>	<b>0.0</b>	<b>-0.1</b>	<b>-0.3</b>	<b>0.1</b>	<b>-0.1</b>	<b>0.1</b>	<b>0.0</b>	<b>2.1</b>
<b>MANUFACTURE OF OTHER NON-METALLIC MINERAL PRODUCTS</b>	<b>137.550</b>	<b>-0.1</b>	<b>-0.3</b>	<b>-0.1</b>	<b>0.2</b>	<b>0.0</b>	<b>0.0</b>	<b>-0.1</b>	<b>0.9</b>	<b>0.3</b>	<b>-0.2</b>	<b>0.1</b>	<b>0.0</b>	<b>-0.1</b>
<b>MANUFACTURE OF BASIC METALS</b>	<b>14.534</b>	<b>-0.5</b>	<b>0.6</b>	<b>0.0</b>	<b>2.1</b>	<b>0.2</b>	<b>0.2</b>	<b>-1.4</b>	<b>1.1</b>	<b>-0.3</b>	<b>4.5</b>	<b>-0.3</b>	<b>0.1</b>	<b>0.4</b>
<b>MANUFACTURE OF FABRICATED METAL PRODUCTS, EXCEPT MACHINERY AND EQUIPMENT</b>	<b>10.831</b>	<b>4.6</b>	<b>2.8</b>	<b>0.7</b>	<b>1.6</b>	<b>0.0</b>	<b>-0.1</b>	<b>-0.8</b>	<b>0.6</b>	<b>-0.5</b>	<b>5.9</b>	<b>1.8</b>	<b>-0.2</b>	<b>2.6</b>
<b>MANUFACTURE OF ELECTRICAL EQUIPMENT</b>	<b>15.239</b>	<b>0.0</b>	<b>-0.9</b>	<b>0.0</b>	<b>0.2</b>	<b>0.0</b>	<b>0.0</b>	<b>-0.1</b>	<b>-0.1</b>	<b>-0.1</b>	<b>-2.7</b>	<b>0.1</b>	<b>0.0</b>	<b>-0.1</b>
<b>MANUFACTURE OF FURNITURE</b>	<b>13.868</b>	<b>0.0</b>	<b>0.0</b>	<b>0.0</b>	<b>0.0</b>	<b>0.0</b>	<b>0.0</b>	<b>0.0</b>	<b>0.0</b>	<b>0.1</b>	<b>-11.1</b>	<b>0.5</b>	<b>0.0</b>	<b>0.0</b>
<b>MANUFACTURE OF FOOD PRODUCTS</b>	<b>364.960</b>	<b>3.4</b>	<b>1.9</b>	<b>-0.6</b>	<b>3.3</b>	<b>-2.1</b>	<b>-0.5</b>	<b>-1.9</b>	<b>0.5</b>	<b>-0.9</b>	<b>1.1</b>	<b>0.0</b>	<b>-1.7</b>	<b>3.4</b>
Processing and Preserving of meat	8.219	1.7	0.6	0.8	0.3	-0.3	0.0	0.8	-0.7	0.0	0.0	0.0	0.0	0.0
Processing & Preserving of Fish, Crustaceans and Molluscs	19.899	-0.3	23.8	4.3	3.2	-21.6	1.3	-1.2	13.7	-8.0	11.4	2.7	-11.5	-3.4
Manufacture of Vegetable and Animal Oils and Fats	79.421	4.3	2.3	0.4	6.2	0.9	3.2	-1.8	0.4	1.7	0.1	1.9	-0.1	4.8
Manufacture of Dairy Products	5.625	0.0	0.0	0.0	0.0	0.0	0.0	0.0	0.0	0.0	0.0	0.0	0.0	0.0
Manufacture of Grain Milling products	82.113	0.1	-1.5	0.1	0.6	0.7	0.5	-0.3	-3.0	-0.6	-0.9	-0.4	0.3	2.0
Manufacture of Bakery products	25.197	0.1	0.0	0.0	0.0	0.0	0.0	0.0	0.0	0.0	0.0	0.3	0.0	-0.2
Manufacture of Sugar	56.645	3.4	1.7	-0.9	2.1	-0.5	-1.8	-1.5	-1.0	-0.1	-3.8	-6.0	-0.1	6.0
Coffee Processing	46.351	8.4	-4.0	-6.7	4.7	1.6	-8.4	-6.9	-2.8	-4.2	2.6	-5.3	-2.8	10.4
Tea Processing	28.588	-1.5	-0.2	-3.2	-4.5	9.0	0.6	-0.6	2.3	3.3	1.2	-0.1	0.9	-2.9
Manufacture of Prepared Animal Feeds	12.901	0.0	0.0	0.0	0.0	0.0	0.0	0.0	0.0	0.0	0.0	0.0	0.0	0.7

**Table1a; Continued**

Industry Group	Weight	Dec-19	Jan-20	Feb-20	Mar-20	Apr-20	May-20	Jun-20	Jul-20	Aug-20	Sep-20	Oct-20	Nov-20	Dec-20
<b>MANUFACTURE OF BEVERAGES</b>	<b>77.507</b>	<b>-0.4</b>	<b>-5.1</b>	<b>-0.1</b>	<b>0.3</b>	<b>0.1</b>	<b>0.0</b>	<b>-0.5</b>	<b>-0.3</b>	<b>-0.4</b>	<b>0.0</b>	<b>0.2</b>	<b>-0.1</b>	<b>-1.5</b>
Distilling, rectifying and blending of spirits	2.606	-6.8	-0.7	-2.5	0.0	1.2	0.0	-0.6	0.0	-2.3	0.8	-0.6	0.0	2.0
Manufacture of Malt Liquors and Malt	32.174	0.0	-13.0	0.0	0.0	0.0	0.0	0.0	0.0	0.0	0.0	0.0	0.0	3.9
Manufacture of Soft Drinks, Production of Mineral waters and Other bottled waters	42.728	-0.4	-0.2	0.0	0.5	0.1	0.1	-0.8	-0.4	-0.6	-0.1	0.3	-0.1	-4.5
<b>MANUFACTURE OF TOBACCO PRODUCTS</b>	<b>25.344</b>	<b>-0.4</b>	<b>0.7</b>	<b>-0.1</b>	<b>1.8</b>	<b>0.2</b>	<b>1.0</b>	<b>-1.0</b>	<b>-0.7</b>	<b>-0.5</b>	<b>0.3</b>	<b>0.5</b>	<b>-0.2</b>	<b>-0.8</b>
Manufacture of Tobacco Products	25.344	-0.4	0.7	-0.1	1.8	0.2	1.0	-1.0	-0.7	-0.5	0.3	0.5	-0.2	-0.8
<b>MANUFACTURE OF TEXTILES</b>	<b>19.225</b>	<b>0.0</b>	<b>0.0</b>	<b>0.0</b>	<b>0.0</b>	<b>0.0</b>	<b>0.0</b>	<b>0.0</b>	<b>0.0</b>	<b>0.0</b>	<b>10.9</b>	<b>1.3</b>	<b>0.0</b>	<b>2.5</b>
Manufacture of made-up textile articles, except apparel	19.225	0.0	0.0	0.0	0.0	0.0	0.0	0.0	0.0	0.0	10.9	1.3	0.0	2.5
<b>MANUFACTURE OF WEARING APPAREL</b>	<b>55.243</b>	<b>0.0</b>	<b>1.4</b>	<b>0.0</b>	<b>0.0</b>	<b>0.0</b>	<b>0.0</b>	<b>0.1</b>	<b>0.0</b>	<b>0.0</b>	<b>2.5</b>	<b>1.1</b>	<b>0.0</b>	<b>3.6</b>
Manufacture of wearing apparel, except fur apparel	55.243	0.0	1.4	0.0	0.0	0.0	0.0	0.1	0.0	0.0	2.5	1.1	0.0	3.6
<b>MANUFACTURE OF LEATHER &amp; RELATED PRODUCTS</b>	<b>15.917</b>	<b>-1.5</b>	<b>0.1</b>	<b>-0.1</b>	<b>1.8</b>	<b>0.2</b>	<b>-4.9</b>	<b>-0.9</b>	<b>-0.6</b>	<b>-0.3</b>	<b>0.3</b>	<b>-0.9</b>	<b>-0.2</b>	<b>5.9</b>
Tanning and dressing of leather; dressing and dyeing of fur	11.844	-2.2	0.1	-0.1	2.6	0.3	-7.4	-1.4	-0.9	-0.7	0.5	0.7	-0.2	9.0
Manufacture of footwear	4.073	0.0	0.0	0.0	0.0	0.0	0.0	0.0	0.0	0.4	0.0	-3.4	0.0	0.0
<b>MANUFACTURE OF WOOD AND PRODUCTS OF WOOD, CORK, EXCEPT FURNITURE</b>	<b>7.316</b>	<b>0.0</b>	<b>0.0</b>	<b>0.0</b>	<b>0.2</b>	<b>0.0</b>	<b>0.0</b>	<b>-0.1</b>	<b>-0.1</b>	<b>0.0</b>	<b>0.0</b>	<b>0.0</b>	<b>0.0</b>	<b>-0.1</b>
Manufacture of Builders' Carpentry & Joinery	7.316	0.0	0.0	0.0	0.2	0.0	0.0	-0.1	-0.1	0.0	0.0	0.0	0.0	-0.1
<b>MANUFACTURE OF PAPER &amp; PAPER PRODUCTS</b>	<b>15.858</b>	<b>2.9</b>	<b>1.1</b>	<b>-1.3</b>	<b>2.2</b>	<b>-1.1</b>	<b>-4.7</b>	<b>-0.8</b>	<b>-1.5</b>	<b>-0.5</b>	<b>-0.6</b>	<b>0.5</b>	<b>-0.2</b>	<b>-0.9</b>
Manufacture of pulp, paper and paperboard	9.068	4.1	1.1	-1.5	2.6	-1.4	-5.8	-0.7	-1.8	-0.6	-0.7	0.6	-0.2	-1.2
Manufacture of corrugated paper and paperboard and of containers of paper and paperboard	2.931	-5.6	1.6	0.0	0.0	0.0	0.0	0.0	0.0	0.0	0.0	0.0	0.0	0.0
Manufacture of other articles of paper and paperboard	3.860	-0.1	0.0	0.0	0.4	0.0	0.0	-2.1	-0.1	-0.1	0.3	0.1	0.0	-0.2
<b>PRINTING AND REPRODUCTION OF RECORDED MEDIA</b>	<b>25.329</b>	<b>0.0</b>	<b>-13.9</b>	<b>0.0</b>	<b>0.0</b>	<b>0.0</b>	<b>0.0</b>	<b>0.0</b>	<b>0.0</b>	<b>0.0</b>	<b>0.0</b>	<b>0.0</b>	<b>0.0</b>	<b>0.0</b>
Printing	25.329	0.0	-13.9	0.0	0.0	0.0	0.0	0.0	0.0	0.0	0.0	0.0	0.0	0.0
<b>MANUFACTURE OF CHEMICALS &amp; CHEMICAL PRODUCTS</b>	<b>72.487</b>	<b>1.1</b>	<b>-0.4</b>	<b>0.0</b>	<b>2.7</b>	<b>0.1</b>	<b>0.7</b>	<b>-0.1</b>	<b>-0.2</b>	<b>-0.2</b>	<b>-0.6</b>	<b>1.6</b>	<b>0.0</b>	<b>0.2</b>
Manufacture of paints, varnishes and similar coatings, printing ink and mastics	10.065	0.0	2.8	0.0	0.0	0.0	0.0	0.0	0.0	0.0	0.0	0.0	0.0	0.0
Manufacture of Soap, Detergents, cleaning and Polishing preparations	49.967	1.6	-1.1	0.0	3.8	0.1	1.0	-0.2	-0.3	-0.2	-0.8	2.2	-0.1	0.3
Manufacture of Other chemical Products n.e.c	12.456	0.1	-0.2	0.0	0.6	0.0	0.0	0.0	0.0	0.0	-0.2	0.3	0.0	0.1

Table1a; Continued

Industry Group	Weight	Dec-19	Jan-20	Feb-20	Mar-20	Apr-20	May-20	Jun-20	Jul-20	Aug-20	Sep-20	Oct-20	Nov-20	Dec-20
<b>MANUFACTURE OF PHARMACEUTICALS, MEDICINAL CHEMICAL &amp; BOTANICAL PRODUCTS</b>	<b>23.736</b>	<b>-0.5</b>	<b>-1.1</b>	<b>0.0</b>	<b>-0.5</b>	<b>3.0</b>	<b>-0.1</b>	<b>3.1</b>	<b>5.7</b>	<b>1.2</b>	<b>1.5</b>	<b>0.0</b>	<b>-1.0</b>	<b>-0.1</b>
Manufacture of Pharmaceuticals, medicinal chemical and botanical products	23.736	-0.5	-1.1	0.0	-0.5	3.0	-0.1	3.1	5.7	1.2	1.5	0.0	-1.0	-0.1
<b>MANUFACTURE OF RUBBER &amp; PLASTIC PRODUCTS</b>	<b>26.455</b>	<b>0.0</b>	<b>-1.1</b>	<b>0.0</b>	<b>0.2</b>	<b>-0.4</b>	<b>0.0</b>	<b>-0.1</b>	<b>-0.3</b>	<b>0.1</b>	<b>-0.1</b>	<b>0.1</b>	<b>0.0</b>	<b>2.1</b>
Manufacture of Plastic products	26.455	0.0	-1.1	0.0	0.2	-0.4	0.0	-0.1	-0.3	0.1	-0.1	0.1	0.0	2.1
<b>MANUFACTURE OF OTHER NON-METALLIC MINERAL PRODUCTS</b>	<b>137.550</b>	<b>-0.1</b>	<b>-0.3</b>	<b>-0.1</b>	<b>0.2</b>	<b>0.0</b>	<b>0.0</b>	<b>-0.1</b>	<b>0.9</b>	<b>0.3</b>	<b>-0.2</b>	<b>0.1</b>	<b>0.0</b>	<b>-0.1</b>
Manufacture of Clay Building Materials	58.241	0.0	-0.5	0.0	0.0	0.0	0.0	0.0	0.3	0.6	-0.9	0.0	0.0	0.0
Manufacture of Cement, Lime and Plaster	60.121	-0.2	0.0	0.0	0.7	0.1	0.0	-0.4	2.2	-0.2	0.7	0.2	-0.1	-0.4
Manufacture of Articles of Concrete, cement and plaster	19.188	-0.2	-0.4	-0.4	0.0	0.0	0.0	0.0	0.0	0.6	0.0	0.0	0.0	0.0
<b>MANUFACTURE OF BASIC METALS</b>	<b>14.534</b>	<b>-0.5</b>	<b>0.6</b>	<b>0.0</b>	<b>2.1</b>	<b>0.2</b>	<b>0.2</b>	<b>-1.4</b>	<b>1.1</b>	<b>-0.3</b>	<b>4.5</b>	<b>-0.3</b>	<b>0.1</b>	<b>0.4</b>
Manufacture of basic iron and steel	14.534	-0.5	0.6	0.0	2.1	0.2	0.2	-1.4	1.1	-0.3	4.5	-0.3	0.1	0.4
<b>MANUFACTURE OF FABRICATED METAL PRODUCTS, EXCEPT MACHINERY AND EQUIPMENT</b>	<b>10.831</b>	<b>4.6</b>	<b>2.8</b>	<b>0.7</b>	<b>1.6</b>	<b>0.0</b>	<b>-0.1</b>	<b>-0.8</b>	<b>0.6</b>	<b>-0.5</b>	<b>5.9</b>	<b>1.8</b>	<b>-0.2</b>	<b>2.6</b>
Manufacture of Other Fabricated Metals n.e.c	10.831	4.6	2.8	0.7	1.6	0.0	-0.1	-0.8	0.6	-0.5	5.9	1.8	-0.2	2.6
<b>MANUFACTURE OF ELECTRICAL EQUIPMENT</b>	<b>15.239</b>	<b>0.0</b>	<b>-0.9</b>	<b>0.0</b>	<b>0.2</b>	<b>0.0</b>	<b>0.0</b>	<b>-0.1</b>	<b>-0.1</b>	<b>-0.1</b>	<b>-2.7</b>	<b>0.1</b>	<b>0.0</b>	<b>-0.1</b>
Manufacture of Batteries and Accumulators	4.384	0.0	0.0	0.0	0.0	0.0	0.0	0.0	0.0	0.0	-7.4	0.0	0.0	0.0
Manufacture of other electronic and electric wires and cables	10.856	-0.1	-1.6	0.0	0.3	0.0	0.0	-0.2	-0.1	-0.1	0.4	0.1	0.0	-0.1
<b>MANUFACTURE OF FURNITURE</b>	<b>13.868</b>	<b>0.0</b>	<b>0.0</b>	<b>0.0</b>	<b>0.0</b>	<b>0.0</b>	<b>0.0</b>	<b>0.0</b>	<b>0.0</b>	<b>0.1</b>	<b>-11.1</b>	<b>0.5</b>	<b>0.0</b>	<b>0.0</b>
Manufacture of Furniture	13.868	0.0	0.0	0.0	0.0	0.0	0.0	0.0	0.0	0.1	-11.1	0.5	0.0	0.0
<b>PPI-UTILITIES</b>	<b>78.600</b>	<b>-0.3</b>	<b>0.4</b>	<b>0.4</b>	<b>1.1</b>	<b>1.2</b>	<b>-1.0</b>	<b>-1.1</b>	<b>-0.5</b>	<b>-0.2</b>	<b>0.2</b>	<b>0.3</b>	<b>0.0</b>	<b>-0.5</b>
Water collection, treatment and supply	18.284	0.0	0.0	0.0	0.0	0.0	0.0	0.0	0.0	0.0	0.0	0.0	0.0	0.0
Electricity power generation	60.316	-0.4	0.5	0.5	1.3	1.5	-1.2	-1.3	-0.6	-0.3	0.2	0.4	0.0	-0.6

Source: UBOS

**Table1b: Annual changes in Producer Price Index-Manufacturing and Utilities (PPI-M&U), December 2019 to December 2020**

Base period: July 2009 to June 2010=100

Industry Group	Weight	Dec-19	Jan-20	Feb-20	Mar-20	Apr-20	May-20	Jun-20	Jul-20	Aug-20	Sep-20	Oct-20	Nov-20	Dec-20
<b>PPI-MANUFACTURING AND UTILITIES (PPI -M&amp;U)</b>	<b>1000.000</b>	<b>2.1</b>	<b>3.0</b>	<b>2.4</b>	<b>3.5</b>	<b>2.2</b>	<b>2.8</b>	<b>2.3</b>	<b>3.2</b>	<b>2.6</b>	<b>3.2</b>	<b>3.3</b>	<b>2.0</b>	<b>2.5</b>
<b>PPI-MANUFACTURING</b>	<b>921.400</b>	<b>2.4</b>	<b>3.5</b>	<b>2.6</b>	<b>3.8</b>	<b>2.3</b>	<b>3.2</b>	<b>2.6</b>	<b>3.6</b>	<b>3.0</b>	<b>3.6</b>	<b>3.7</b>	<b>2.2</b>	<b>2.8</b>
<b>PPI-UTILITIES</b>	<b>78.600</b>	<b>-0.6</b>	<b>-0.9</b>	<b>0.2</b>	<b>0.8</b>	<b>1.3</b>	<b>-0.2</b>	<b>-0.9</b>	<b>-0.6</b>	<b>-1.0</b>	<b>-0.6</b>	<b>-0.9</b>	<b>0.5</b>	<b>0.2</b>
<b>PPI-MANUFACTURING</b>	<b>921.400</b>	<b>2.4</b>	<b>3.5</b>	<b>2.6</b>	<b>3.8</b>	<b>2.3</b>	<b>3.2</b>	<b>2.6</b>	<b>3.6</b>	<b>3.0</b>	<b>3.6</b>	<b>3.7</b>	<b>2.2</b>	<b>2.8</b>
<b>MANUFACTURE OF FOOD PRODUCTS</b>	<b>364.960</b>	<b>6.0</b>	<b>9.2</b>	<b>7.6</b>	<b>10.6</b>	<b>7.2</b>	<b>9.1</b>	<b>7.8</b>	<b>9.1</b>	<b>7.4</b>	<b>6.2</b>	<b>5.8</b>	<b>2.3</b>	<b>2.3</b>
<b>MANUFACTURE OF BEVERAGES</b>	<b>77.507</b>	<b>-1.6</b>	<b>-6.5</b>	<b>-6.3</b>	<b>-6.3</b>	<b>-7.3</b>	<b>-7.5</b>	<b>-7.7</b>	<b>-6.5</b>	<b>-6.9</b>	<b>-6.3</b>	<b>-6.2</b>	<b>-6.2</b>	<b>-7.3</b>
<b>MANUFACTURE OF TOBACCO PRODUCTS</b>	<b>25.344</b>	<b>2.3</b>	<b>3.2</b>	<b>3.8</b>	<b>5.0</b>	<b>4.6</b>	<b>5.1</b>	<b>4.7</b>	<b>4.7</b>	<b>4.2</b>	<b>5.0</b>	<b>4.1</b>	<b>1.7</b>	<b>1.3</b>
<b>MANUFACTURE OF TEXTILES</b>	<b>19.225</b>	<b>-2.9</b>	<b>-2.9</b>	<b>-2.9</b>	<b>-2.9</b>	<b>-2.9</b>	<b>-2.6</b>	<b>-2.6</b>	<b>-1.4</b>	<b>-1.4</b>	<b>10.9</b>	<b>12.4</b>	<b>12.4</b>	<b>15.1</b>
<b>MANUFACTURE OF WEARING APPAREL</b>	<b>55.243</b>	<b>3.6</b>	<b>5.0</b>	<b>5.0</b>	<b>3.0</b>	<b>1.7</b>	<b>1.8</b>	<b>1.8</b>	<b>1.1</b>	<b>1.1</b>	<b>4.0</b>	<b>5.2</b>	<b>5.2</b>	<b>8.9</b>
<b>MANUFACTURE OF LEATHER &amp; RELATED PRODUCTS</b>	<b>15.917</b>	<b>-15.7</b>	<b>-10.3</b>	<b>-13.1</b>	<b>-22.7</b>	<b>-6.0</b>	<b>-9.7</b>	<b>-9.5</b>	<b>-6.9</b>	<b>-7.1</b>	<b>-6.5</b>	<b>-7.7</b>	<b>-6.8</b>	<b>0.2</b>
<b>MANUFACTURE OF WOOD AND PRODUCTS OF WOOD, CORK, EXCEPT FURNITURE</b>	<b>7.316</b>	<b>1.1</b>	<b>1.1</b>	<b>1.2</b>	<b>1.3</b>	<b>0.7</b>	<b>0.7</b>	<b>0.7</b>	<b>-0.3</b>	<b>-0.4</b>	<b>-0.3</b>	<b>0.0</b>	<b>0.0</b>	<b>0.0</b>
<b>MANUFACTURE OF PAPER &amp; PAPER PRODUCTS</b>	<b>15.858</b>	<b>-2.0</b>	<b>-0.7</b>	<b>-1.7</b>	<b>-0.9</b>	<b>-2.9</b>	<b>-8.2</b>	<b>-8.0</b>	<b>-6.1</b>	<b>-7.2</b>	<b>-5.2</b>	<b>-4.4</b>	<b>-4.1</b>	<b>-7.7</b>
<b>PRINTING AND REPRODUCTION OF RECORDED MEDIA</b>	<b>25.329</b>	<b>2.2</b>	<b>-11.9</b>	<b>-13.9</b>	<b>-13.9</b>	<b>-13.9</b>	<b>-13.9</b>	<b>-13.9</b>	<b>-13.9</b>	<b>-13.9</b>	<b>-13.9</b>	<b>-13.9</b>	<b>-13.9</b>	<b>-13.9</b>
<b>MANUFACTURE OF CHEMICALS &amp; CHEMICAL PRODUCTS</b>	<b>72.487</b>	<b>-5.2</b>	<b>-5.1</b>	<b>-4.9</b>	<b>-2.6</b>	<b>-3.4</b>	<b>-0.9</b>	<b>-0.8</b>	<b>-0.1</b>	<b>1.5</b>	<b>1.5</b>	<b>3.9</b>	<b>4.6</b>	<b>3.7</b>
<b>MANUFACTURE OF PHARMACEUTICALS, MEDICINAL CHEMICAL &amp; BOTANICAL PRODUCTS</b>	<b>23.736</b>	<b>-6.4</b>	<b>-7.4</b>	<b>-7.3</b>	<b>-8.5</b>	<b>-5.9</b>	<b>-5.8</b>	<b>-2.5</b>	<b>3.3</b>	<b>4.5</b>	<b>9.3</b>	<b>8.8</b>	<b>11.7</b>	<b>12.1</b>
<b>MANUFACTURE OF RUBBER &amp; PLASTIC PRODUCTS</b>	<b>26.455</b>	<b>-3.3</b>	<b>-4.3</b>	<b>-4.1</b>	<b>-3.9</b>	<b>-4.0</b>	<b>-4.5</b>	<b>-3.9</b>	<b>-4.0</b>	<b>-3.9</b>	<b>-3.8</b>	<b>-3.8</b>	<b>-1.6</b>	<b>0.4</b>
<b>MANUFACTURE OF OTHER NON-METALLIC MINERAL PRODUCTS</b>	<b>137.550</b>	<b>5.5</b>	<b>1.9</b>	<b>0.9</b>	<b>1.0</b>	<b>1.0</b>	<b>1.4</b>	<b>1.4</b>	<b>1.7</b>	<b>2.6</b>	<b>0.8</b>	<b>0.8</b>	<b>0.8</b>	<b>0.7</b>
<b>MANUFACTURE OF BASIC METALS</b>	<b>14.534</b>	<b>-2.8</b>	<b>-2.4</b>	<b>-2.4</b>	<b>-0.6</b>	<b>-0.4</b>	<b>-0.4</b>	<b>-0.3</b>	<b>1.0</b>	<b>0.9</b>	<b>6.2</b>	<b>6.9</b>	<b>6.4</b>	<b>7.4</b>
<b>MANUFACTURE OF FABRICATED METAL PRODUCTS, EXCEPT MACHINERY AND EQUIPMENT</b>	<b>10.831</b>	<b>0.9</b>	<b>5.7</b>	<b>6.0</b>	<b>7.5</b>	<b>5.6</b>	<b>5.3</b>	<b>4.7</b>	<b>4.9</b>	<b>4.4</b>	<b>11.7</b>	<b>14.8</b>	<b>17.3</b>	<b>15.0</b>
<b>MANUFACTURE OF ELECTRICAL EQUIPMENT</b>	<b>15.239</b>	<b>-0.7</b>	<b>-1.6</b>	<b>-1.8</b>	<b>-1.7</b>	<b>-1.7</b>	<b>-1.8</b>	<b>-1.8</b>	<b>-1.8</b>	<b>-1.8</b>	<b>-4.4</b>	<b>-3.6</b>	<b>-3.6</b>	<b>-3.7</b>
<b>MANUFACTURE OF FURNITURE</b>	<b>13.868</b>	<b>2.7</b>	<b>2.7</b>	<b>2.9</b>	<b>2.9</b>	<b>2.1</b>	<b>2.3</b>	<b>2.3</b>	<b>0.1</b>	<b>0.3</b>	<b>-11.0</b>	<b>-10.6</b>	<b>-10.6</b>	<b>-10.6</b>
<b>MANUFACTURE OF FOOD PRODUCTS</b>	<b>364.960</b>	<b>6.0</b>	<b>9.2</b>	<b>7.6</b>	<b>10.6</b>	<b>7.2</b>	<b>9.1</b>	<b>7.8</b>	<b>9.1</b>	<b>7.4</b>	<b>6.2</b>	<b>5.8</b>	<b>2.3</b>	<b>2.3</b>
Processing and Preserving of meat	8.219	7.5	8.5	8.5	8.8	8.5	8.5	9.3	8.5	8.5	8.2	8.2	3.2	1.4
Processing & Preserving of Fish, Crustaceans and Molluscs	19.899	16.1	39.3	29.2	36.7	-1.4	36.9	36.1	42.1	26.5	18.7	26.8	10.4	7.0
Manufacture of Vegetable and Animal Oils and Fats	79.421	1.8	5.0	6.8	12.9	14.3	17.8	16.1	17.2	19.8	19.7	21.2	20.9	21.5
Manufacture of Dairy Products	5.625	0.0	0.0	0.0	0.0	0.0	0.0	0.0	0.0	0.0	0.0	0.0	0.0	0.0
Manufacture of Grain Milling products	82.113	7.6	5.4	7.5	8.0	7.9	5.6	4.4	-0.3	-0.7	-2.5	-2.9	-4.5	-2.6
Manufacture of Bakery products	25.197	-0.1	-0.1	-0.1	-0.1	0.0	0.2	0.2	0.1	0.1	0.1	0.5	0.5	0.2
Manufacture of Sugar	56.645	-2.0	2.5	2.5	4.2	3.5	-2.5	1.4	3.5	5.7	1.0	-7.1	-8.5	-6.2
Coffee Processing	46.351	30.4	23.8	10.6	12.2	12.3	3.4	-4.3	-2.3	-11.0	-11.0	-17.1	-22.6	-21.2
Tea Processing	28.588	-4.5	-2.1	-3.0	-8.6	4.4	2.8	10.3	13.7	12.8	6.5	2.6	6.8	5.2
Manufacture of Prepared Animal Feeds	12.901	-24.5	-16.5	-16.5	-16.5	-16.5	0.0	0.0	0.0	0.0	0.0	0.0	0.0	0.7

**Table1b; Continued**

Industry Group	Weight	Dec-19	Jan-20	Feb-20	Mar-20	Apr-20	May-20	Jun-20	Jul-20	Aug-20	Sep-20	Oct-20	Nov-20	Dec-20
<b>MANUFACTURE OF BEVERAGES</b>	<b>77.507</b>	<b>-1.6</b>	<b>-6.5</b>	<b>-6.3</b>	<b>-6.3</b>	<b>-7.3</b>	<b>-7.5</b>	<b>-7.7</b>	<b>-6.5</b>	<b>-6.9</b>	<b>-6.3</b>	<b>-6.2</b>	<b>-6.2</b>	<b>-7.3</b>
Distilling, rectifying and blending of spirits	2.606	-23.5	-24.0	-25.2	-25.2	-23.3	-24.0	-23.7	-23.7	-25.5	-14.4	-14.6	-11.1	-2.7
Manufacture of Malt Liquors and Malt	32.174	1.4	-11.8	-11.8	-11.8	-13.0	-13.0	-13.0	-13.0	-13.0	-13.0	-13.0	-13.0	-9.6
Manufacture of Soft Drinks, Production of Mineral waters and Other bottled waters	42.728	-2.4	-2.5	-2.1	-2.1	-3.2	-3.5	-3.8	-1.5	-2.0	-1.6	-1.6	-1.7	-5.7
<b>MANUFACTURE OF TOBACCO PRODUCTS</b>	<b>25.344</b>	<b>2.3</b>	<b>3.2</b>	<b>3.8</b>	<b>5.0</b>	<b>4.6</b>	<b>5.1</b>	<b>4.7</b>	<b>4.7</b>	<b>4.2</b>	<b>5.0</b>	<b>4.1</b>	<b>1.7</b>	<b>1.3</b>
Manufacture of Tobacco Products	25.344	2.3	3.2	3.8	5.0	4.6	5.1	4.7	4.7	4.2	5.0	4.1	1.7	1.3
<b>MANUFACTURE OF TEXTILES</b>	<b>19.225</b>	<b>-2.9</b>	<b>-2.9</b>	<b>-2.9</b>	<b>-2.9</b>	<b>-2.9</b>	<b>-2.6</b>	<b>-2.6</b>	<b>-1.4</b>	<b>-1.4</b>	<b>10.9</b>	<b>12.4</b>	<b>12.4</b>	<b>15.1</b>
Manufacture of made-up textile articles, except apparel	19.225	-2.9	-2.9	-2.9	-2.9	-2.9	-2.6	-2.6	-1.4	-1.4	10.9	12.4	12.4	15.1
<b>MANUFACTURE OF WEARING APPAREL</b>	<b>55.243</b>	<b>3.6</b>	<b>5.0</b>	<b>5.0</b>	<b>3.0</b>	<b>1.7</b>	<b>1.8</b>	<b>1.8</b>	<b>1.1</b>	<b>1.1</b>	<b>4.0</b>	<b>5.2</b>	<b>5.2</b>	<b>8.9</b>
Manufacture of wearing apparel, except fur apparel	55.243	3.6	5.0	5.0	3.0	1.7	1.8	1.8	1.1	1.1	4.0	5.2	5.2	8.9
<b>MANUFACTURE OF LEATHER &amp; RELATED PRODUCTS</b>	<b>15.917</b>	<b>-15.7</b>	<b>-10.3</b>	<b>-13.1</b>	<b>-22.7</b>	<b>-6.0</b>	<b>-9.7</b>	<b>-9.5</b>	<b>-6.9</b>	<b>-7.1</b>	<b>-6.5</b>	<b>-7.7</b>	<b>-6.8</b>	<b>0.2</b>
Tanning and dressing of leather; dressing and dyeing of fur	11.844	-19.7	-12.6	-16.4	-27.6	-6.6	-13.2	-13.8	-10.4	-10.9	-10.1	-10.0	-8.7	1.8
Manufacture of footwear	4.073	-4.8	-4.8	-4.8	-4.8	-4.8	-2.0	0.0	0.0	0.4	0.4	-3.0	-3.0	-3.0
<b>MANUFACTURE OF WOOD AND PRODUCTS OF WOOD, CORK, EXCEPT FURNITURE</b>	<b>7.316</b>	<b>1.1</b>	<b>1.1</b>	<b>1.2</b>	<b>1.3</b>	<b>0.7</b>	<b>0.7</b>	<b>0.7</b>	<b>-0.3</b>	<b>-0.4</b>	<b>-0.3</b>	<b>0.0</b>	<b>0.0</b>	<b>0.0</b>
Manufacture of Builders' Carpentry & Joinery	7.316	1.1	1.1	1.2	1.3	0.7	0.7	0.7	-0.3	-0.4	-0.3	0.0	0.0	0.0
<b>MANUFACTURE OF PAPER &amp; PAPER PRODUCTS</b>	<b>15.858</b>	<b>-2.0</b>	<b>-0.7</b>	<b>-1.7</b>	<b>-0.9</b>	<b>-2.9</b>	<b>-8.2</b>	<b>-8.0</b>	<b>-6.1</b>	<b>-7.2</b>	<b>-5.2</b>	<b>-4.4</b>	<b>-4.1</b>	<b>-7.7</b>
Manufacture of pulp, paper and paperboard	9.068	-2.0	-0.6	-1.8	-0.7	-3.2	-9.7	-9.3	-7.1	-8.6	-5.9	-4.9	-4.6	-9.4
Manufacture of corrugated paper and paperboard and of containers of paper and paperboard	2.931	-4.8	-3.2	-3.2	-4.0	-4.0	-4.0	-4.0	-4.0	-2.6	-4.0	-4.0	-4.0	1.6
Manufacture of other articles of paper and paperboard	3.860	0.1	0.1	0.2	0.4	0.3	1.7	-0.8	-0.8	-0.6	-1.6	-1.6	-1.6	-1.7
<b>PRINTING AND REPRODUCTION OF RECORDED MEDIA</b>	<b>25.329</b>	<b>2.2</b>	<b>-11.9</b>	<b>-13.9</b>	<b>-13.9</b>	<b>-13.9</b>	<b>-13.9</b>	<b>-13.9</b>	<b>-13.9</b>	<b>-13.9</b>	<b>-13.9</b>	<b>-13.9</b>	<b>-13.9</b>	<b>-13.9</b>
Printing	25.329	2.2	-11.9	-13.9	-13.9	-13.9	-13.9	-13.9	-13.9	-13.9	-13.9	-13.9	-13.9	-13.9
<b>MANUFACTURE OF CHEMICALS &amp; CHEMICAL PRODUCTS</b>	<b>72.487</b>	<b>-5.2</b>	<b>-5.1</b>	<b>-4.9</b>	<b>-2.6</b>	<b>-3.4</b>	<b>-0.9</b>	<b>-0.8</b>	<b>-0.1</b>	<b>1.5</b>	<b>1.5</b>	<b>3.9</b>	<b>4.6</b>	<b>3.7</b>
Manufacture of paints, varnishes and similar coatings, printing ink and mastics	10.065	0.0	2.8	2.8	2.8	2.8	2.8	2.8	2.8	2.8	2.8	2.8	2.8	2.8
Manufacture of Soap, Detergents, cleaning and Polishing preparations	49.967	-8.3	-8.7	-8.5	-5.3	-5.1	-1.6	-1.5	-0.6	1.6	1.7	5.0	6.0	4.7
Manufacture of Other chemical Products n.e.c	12.456	5.7	5.6	5.6	6.2	-0.5	-0.5	-0.4	-0.2	0.0	-0.1	0.5	0.7	0.6

**Table1b; Continued**

Industry Group	Weight	Dec-19	Jan-20	Feb-20	Mar-20	Apr-20	May-20	Jun-20	Jul-20	Aug-20	Sep-20	Oct-20	Nov-20	Dec-20
<b>MANUFACTURE OF PHARMACEUTICALS, MEDICINAL CHEMICAL &amp; BOTANICAL PRODUCTS</b>	<b>23.736</b>	<b>-6.4</b>	<b>-7.4</b>	<b>-7.3</b>	<b>-8.5</b>	<b>-5.9</b>	<b>-5.8</b>	<b>-2.5</b>	<b>3.3</b>	<b>4.5</b>	<b>9.3</b>	<b>8.8</b>	<b>11.7</b>	<b>12.1</b>
Manufacture of Pharmaceuticals, medicinal chemical and botanical products	23.736	-6.4	-7.4	-7.3	-8.5	-5.9	-5.8	-2.5	3.3	4.5	9.3	8.8	11.7	12.1
<b>MANUFACTURE OF RUBBER &amp; PLASTIC PRODUCTS</b>	<b>26.455</b>	<b>-3.3</b>	<b>-4.3</b>	<b>-4.1</b>	<b>-3.9</b>	<b>-4.0</b>	<b>-4.5</b>	<b>-3.9</b>	<b>-4.0</b>	<b>-3.9</b>	<b>-3.8</b>	<b>-3.8</b>	<b>-1.6</b>	<b>0.4</b>
Manufacture of Plastic products	26.455	-3.3	-4.3	-4.1	-3.9	-4.0	-4.5	-3.9	-4.0	-3.9	-3.8	-3.8	-1.6	0.4
<b>MANUFACTURE OF OTHER NON-METALLIC MINERAL PRODUCTS</b>	<b>137.550</b>	<b>5.5</b>	<b>1.9</b>	<b>0.9</b>	<b>1.0</b>	<b>1.0</b>	<b>1.4</b>	<b>1.4</b>	<b>1.7</b>	<b>2.6</b>	<b>0.8</b>	<b>0.8</b>	<b>0.8</b>	<b>0.7</b>
Manufacture of Clay Building Materials	58.241	13.3	5.1	3.3	3.3	3.3	4.0	4.0	3.0	3.6	-0.4	-0.4	-0.4	-0.4
Manufacture of Cement, Lime and Plaster	60.121	-1.5	-1.4	-1.6	-1.1	-1.3	-1.1	-1.3	1.1	2.3	3.1	3.2	3.1	2.8
Manufacture of Articles of Concrete, cement and plaster	19.188	0.2	-0.2	-1.0	-1.0	-1.0	-1.0	-0.7	-0.7	-0.1	-0.1	-0.1	-0.3	-0.1
<b>MANUFACTURE OF BASIC METALS</b>	<b>14.534</b>	<b>-2.8</b>	<b>-2.4</b>	<b>-2.4</b>	<b>-0.6</b>	<b>-0.4</b>	<b>-0.4</b>	<b>-0.3</b>	<b>1.0</b>	<b>0.9</b>	<b>6.2</b>	<b>6.9</b>	<b>6.4</b>	<b>7.4</b>
Manufacture of basic iron and steel	14.534	-2.8	-2.4	-2.4	-0.6	-0.4	-0.4	-0.3	1.0	0.9	6.2	6.9	6.4	7.4
<b>MANUFACTURE OF FABRICATED METAL PRODUCTS, EXCEPT MACHINERY AND EQUIPMENT</b>	<b>10.831</b>	<b>0.9</b>	<b>5.7</b>	<b>6.0</b>	<b>7.5</b>	<b>5.6</b>	<b>5.3</b>	<b>4.7</b>	<b>4.9</b>	<b>4.4</b>	<b>11.7</b>	<b>14.8</b>	<b>17.3</b>	<b>15.0</b>
Manufacture of Other Fabricated Metals n.e.c	10.831	0.9	5.7	6.0	7.5	5.6	5.3	4.7	4.9	4.4	11.7	14.8	17.3	15.0
<b>MANUFACTURE OF ELECTRICAL EQUIPMENT</b>	<b>15.239</b>	<b>-0.7</b>	<b>-1.6</b>	<b>-1.8</b>	<b>-1.7</b>	<b>-1.7</b>	<b>-1.8</b>	<b>-1.8</b>	<b>-1.8</b>	<b>-1.8</b>	<b>-4.4</b>	<b>-3.6</b>	<b>-3.6</b>	<b>-3.7</b>
Manufacture of Batteries and Accumulators	4.384	-2.1	-2.1	-2.1	-2.1	-2.1	-2.1	-2.1	-2.1	-2.1	-9.4	-7.4	-7.4	-7.4
Manufacture of other electronic and electric wires and cables	10.856	0.3	-1.3	-1.6	-1.4	-1.4	-1.5	-1.6	-1.6	-1.6	-1.2	-1.2	-1.2	-1.3
<b>MANUFACTURE OF FURNITURE</b>	<b>13.868</b>	<b>2.7</b>	<b>2.7</b>	<b>2.9</b>	<b>2.9</b>	<b>2.1</b>	<b>2.3</b>	<b>2.3</b>	<b>0.1</b>	<b>0.3</b>	<b>-11.0</b>	<b>-10.6</b>	<b>-10.6</b>	<b>-10.6</b>
Manufacture of Furniture	13.868	2.7	2.7	2.9	2.9	2.1	2.3	2.3	0.1	0.3	-11.0	-10.6	-10.6	-10.6
<b>PPI-UTILITIES</b>	<b>78.600</b>	<b>-0.6</b>	<b>-0.9</b>	<b>0.2</b>	<b>0.8</b>	<b>1.3</b>	<b>-0.2</b>	<b>-0.9</b>	<b>-0.6</b>	<b>-1.0</b>	<b>-0.6</b>	<b>-0.9</b>	<b>0.5</b>	<b>0.2</b>
Water collection, treatment and supply	18.284	0.0	0.0	0.0	0.0	0.0	0.0	0.0	0.0	0.0	0.0	0.0	0.0	0.0
Electricity power generation	60.316	-0.7	-1.1	0.2	1.0	1.6	-0.3	-1.1	-0.8	-1.2	-0.7	-1.1	0.6	0.3

Source: UBOS



**Table1c: Monthly Changes in Producer Price Index-Manufacturing and Utilities (PPI-M&U), December 2019 to December 2020**

Base period: July 2009 to June 2010=100

Industry Group	Weight	Dec-19	Jan-20	Feb-20	Mar-20	Apr-20	May-20	Jun-20	Jul-20	Aug-20	Sep-20	Oct-20	Nov-20	Dec-20
<b>PPI-MANUFACTURING AND UTILITIES (PPI -M&amp;U)</b>	<b>1000.000</b>	<b>1.5</b>	<b>0.5</b>	<b>-0.3</b>	<b>1.9</b>	<b>-0.8</b>	<b>-0.4</b>	<b>-1.0</b>	<b>0.3</b>	<b>-0.4</b>	<b>1.2</b>	<b>0.3</b>	<b>-0.8</b>	<b>2.0</b>
<b>PPI-MANUFACTURING</b>	<b>921.400</b>	<b>1.7</b>	<b>0.5</b>	<b>-0.4</b>	<b>2.0</b>	<b>-1.0</b>	<b>-0.4</b>	<b>-1.0</b>	<b>0.4</b>	<b>-0.4</b>	<b>1.3</b>	<b>0.3</b>	<b>-0.9</b>	<b>2.3</b>
<b>PPI-UTILITIES</b>	<b>78.600</b>	<b>-0.3</b>	<b>0.4</b>	<b>0.4</b>	<b>1.1</b>	<b>1.2</b>	<b>-1.0</b>	<b>-1.1</b>	<b>-0.5</b>	<b>-0.2</b>	<b>0.2</b>	<b>0.3</b>	<b>0.0</b>	<b>-0.5</b>
<b>PPI-MANUFACTURING</b>	<b>921.400</b>	<b>1.7</b>	<b>0.5</b>	<b>-0.4</b>	<b>2.0</b>	<b>-1.0</b>	<b>-0.4</b>	<b>-1.0</b>	<b>0.4</b>	<b>-0.4</b>	<b>1.3</b>	<b>0.3</b>	<b>-0.9</b>	<b>2.3</b>
<b>MANUFACTURE OF FOOD PRODUCTS</b>	<b>364.960</b>	<b>3.4</b>	<b>1.9</b>	<b>-0.6</b>	<b>3.3</b>	<b>-2.1</b>	<b>-0.5</b>	<b>-1.9</b>	<b>0.5</b>	<b>-0.9</b>	<b>1.1</b>	<b>0.0</b>	<b>-1.7</b>	<b>3.4</b>
<b>MANUFACTURE OF BEVERAGES</b>	<b>77.507</b>	<b>-0.4</b>	<b>-5.1</b>	<b>-0.1</b>	<b>0.3</b>	<b>0.1</b>	<b>0.0</b>	<b>-0.5</b>	<b>-0.3</b>	<b>-0.4</b>	<b>0.0</b>	<b>0.2</b>	<b>-0.1</b>	<b>-1.5</b>
<b>MANUFACTURE OF TOBACCO PRODUCTS</b>	<b>25.344</b>	<b>-0.4</b>	<b>0.7</b>	<b>-0.1</b>	<b>1.8</b>	<b>0.2</b>	<b>1.0</b>	<b>-1.0</b>	<b>-0.7</b>	<b>-0.5</b>	<b>0.3</b>	<b>0.5</b>	<b>-0.2</b>	<b>-0.8</b>
<b>MANUFACTURE OF TEXTILES</b>	<b>19.225</b>	<b>0.0</b>	<b>0.0</b>	<b>0.0</b>	<b>0.0</b>	<b>0.0</b>	<b>0.0</b>	<b>0.0</b>	<b>0.0</b>	<b>0.0</b>	<b>10.9</b>	<b>1.3</b>	<b>0.0</b>	<b>2.5</b>
<b>MANUFACTURE OF WEARING APPAREL</b>	<b>55.243</b>	<b>0.0</b>	<b>1.4</b>	<b>0.0</b>	<b>0.0</b>	<b>0.0</b>	<b>0.0</b>	<b>0.1</b>	<b>0.0</b>	<b>0.0</b>	<b>2.5</b>	<b>1.1</b>	<b>0.0</b>	<b>3.6</b>
<b>MANUFACTURE OF LEATHER &amp; RELATED PRODUCTS</b>	<b>15.917</b>	<b>-1.5</b>	<b>0.1</b>	<b>-0.1</b>	<b>1.8</b>	<b>0.2</b>	<b>-4.9</b>	<b>-0.9</b>	<b>-0.6</b>	<b>-0.3</b>	<b>0.3</b>	<b>-0.9</b>	<b>-0.2</b>	<b>5.9</b>
<b>MANUFACTURE OF WOOD AND PRODUCTS OF WOOD, CORK, EXCEPT FURNITURE</b>	<b>7.316</b>	<b>0.0</b>	<b>0.0</b>	<b>0.0</b>	<b>0.2</b>	<b>0.0</b>	<b>0.0</b>	<b>-0.1</b>	<b>-0.1</b>	<b>0.0</b>	<b>0.0</b>	<b>0.0</b>	<b>0.0</b>	<b>-0.1</b>
<b>MANUFACTURE OF PAPER &amp; PAPER PRODUCTS</b>	<b>15.858</b>	<b>2.9</b>	<b>1.1</b>	<b>-1.3</b>	<b>2.2</b>	<b>-1.1</b>	<b>-4.7</b>	<b>-0.8</b>	<b>-1.5</b>	<b>-0.5</b>	<b>-0.6</b>	<b>0.5</b>	<b>-0.2</b>	<b>-0.9</b>
<b>PRINTING AND REPRODUCTION OF RECORDED MEDIA</b>	<b>25.329</b>	<b>0.0</b>	<b>-13.9</b>	<b>0.0</b>	<b>0.0</b>	<b>0.0</b>	<b>0.0</b>	<b>0.0</b>	<b>0.0</b>	<b>0.0</b>	<b>0.0</b>	<b>0.0</b>	<b>0.0</b>	<b>0.0</b>
<b>MANUFACTURE OF CHEMICALS &amp; CHEMICAL PRODUCTS</b>	<b>72.487</b>	<b>1.1</b>	<b>-0.4</b>	<b>0.0</b>	<b>2.7</b>	<b>0.1</b>	<b>0.7</b>	<b>-0.1</b>	<b>-0.2</b>	<b>-0.2</b>	<b>-0.6</b>	<b>1.6</b>	<b>0.0</b>	<b>0.2</b>
<b>MANUFACTURE OF PHARMACEUTICALS, MEDICINAL CHEMICAL &amp; BOTANICAL PRODUCTS</b>	<b>23.736</b>	<b>-0.5</b>	<b>-1.1</b>	<b>0.0</b>	<b>-0.5</b>	<b>3.0</b>	<b>-0.1</b>	<b>3.1</b>	<b>5.7</b>	<b>1.2</b>	<b>1.5</b>	<b>0.0</b>	<b>-1.0</b>	<b>-0.1</b>
<b>MANUFACTURE OF RUBBER &amp; PLASTIC PRODUCTS</b>	<b>26.455</b>	<b>0.0</b>	<b>-1.1</b>	<b>0.0</b>	<b>0.2</b>	<b>-0.4</b>	<b>0.0</b>	<b>-0.1</b>	<b>-0.3</b>	<b>0.1</b>	<b>-0.1</b>	<b>0.1</b>	<b>0.0</b>	<b>2.1</b>
<b>MANUFACTURE OF OTHER NON-METALLIC MINERAL PRODUCTS</b>	<b>137.550</b>	<b>-0.1</b>	<b>-0.3</b>	<b>-0.1</b>	<b>0.2</b>	<b>0.0</b>	<b>0.0</b>	<b>-0.1</b>	<b>0.9</b>	<b>0.3</b>	<b>-0.2</b>	<b>0.1</b>	<b>0.0</b>	<b>-0.1</b>
<b>MANUFACTURE OF BASIC METALS</b>	<b>14.534</b>	<b>-0.5</b>	<b>0.6</b>	<b>0.0</b>	<b>2.1</b>	<b>0.2</b>	<b>0.2</b>	<b>-1.4</b>	<b>1.1</b>	<b>-0.3</b>	<b>4.5</b>	<b>-0.3</b>	<b>0.1</b>	<b>0.4</b>
<b>MANUFACTURE OF FABRICATED METAL PRODUCTS, EXCEPT MACHINERY AND EQUIPMENT</b>	<b>10.831</b>	<b>4.6</b>	<b>2.8</b>	<b>0.7</b>	<b>1.6</b>	<b>0.0</b>	<b>-0.1</b>	<b>-0.8</b>	<b>0.6</b>	<b>-0.5</b>	<b>5.9</b>	<b>1.8</b>	<b>-0.2</b>	<b>2.6</b>
<b>MANUFACTURE OF ELECTRICAL EQUIPMENT</b>	<b>15.239</b>	<b>0.0</b>	<b>-0.9</b>	<b>0.0</b>	<b>0.2</b>	<b>0.0</b>	<b>0.0</b>	<b>-0.1</b>	<b>-0.1</b>	<b>-0.1</b>	<b>-2.7</b>	<b>0.1</b>	<b>0.0</b>	<b>-0.1</b>
<b>MANUFACTURE OF FURNITURE</b>	<b>13.868</b>	<b>0.0</b>	<b>0.0</b>	<b>0.0</b>	<b>0.0</b>	<b>0.0</b>	<b>0.0</b>	<b>0.0</b>	<b>0.0</b>	<b>0.1</b>	<b>-11.1</b>	<b>0.5</b>	<b>0.0</b>	<b>0.0</b>
<b>MANUFACTURE OF FOOD PRODUCTS</b>	<b>364.960</b>	<b>3.4</b>	<b>1.9</b>	<b>-0.6</b>	<b>3.3</b>	<b>-2.1</b>	<b>-0.5</b>	<b>-1.9</b>	<b>0.5</b>	<b>-0.9</b>	<b>1.1</b>	<b>0.0</b>	<b>-1.7</b>	<b>3.4</b>
Processing and Preserving of meat	8.219	1.7	0.6	0.8	0.3	-0.3	0.0	0.8	-0.7	0.0	0.0	0.0	0.0	0.0
Processing & Preserving of Fish, Crustaceans and Molluscs	19.899	-0.3	23.8	4.3	3.2	-21.6	1.3	-1.2	13.7	-8.0	11.4	2.7	-11.5	-3.4
Manufacture of Vegetable and Animal Oils and Fats	79.421	4.3	2.3	0.4	6.2	0.9	3.2	-1.8	0.4	1.7	0.1	1.9	-0.1	4.8
Manufacture of Dairy Products	5.625	0.0	0.0	0.0	0.0	0.0	0.0	0.0	0.0	0.0	0.0	0.0	0.0	0.0
Manufacture of Grain Milling products	82.113	0.1	-1.5	0.1	0.6	0.7	0.5	-0.3	-3.0	-0.6	-0.9	-0.4	0.3	2.0
Manufacture of Bakery products	25.197	0.1	0.0	0.0	0.0	0.0	0.0	0.0	0.0	0.0	0.0	0.3	0.0	-0.2
Manufacture of Sugar	56.645	3.4	1.7	-0.9	2.1	-0.5	-1.8	-1.5	-1.0	-0.1	-3.8	-6.0	-0.1	6.0
Coffee Processing	46.351	8.4	-4.0	-6.7	4.7	1.6	-8.4	-6.9	-2.8	-4.2	2.6	-5.3	-2.8	10.4
Tea Processing	28.588	-1.5	-0.2	-3.2	-4.5	9.0	0.6	-0.6	2.3	3.3	1.2	-0.1	0.9	-2.9
Manufacture of Prepared Animal Feeds	12.901	0.0	0.0	0.0	0.0	0.0	0.0	0.0	0.0	0.0	0.0	0.0	0.0	0.7

**Table1c; Continued**

Industry Group	Weight	Dec-19	Jan-20	Feb-20	Mar-20	Apr-20	May-20	Jun-20	Jul-20	Aug-20	Sep-20	Oct-20	Nov-20	Dec-20
<b>MANUFACTURE OF BEVERAGES</b>	<b>77.507</b>	-0.4	-5.1	-0.1	0.3	0.1	0.0	-0.5	-0.3	-0.4	0.0	0.2	-0.1	-1.5
Distilling, rectifying and blending of spirits	2.606	-6.8	-0.7	-2.5	0.0	1.2	0.0	-0.6	0.0	-2.3	0.8	-0.6	0.0	2.0
Manufacture of Malt Liquors and Malt	32.174	0.0	-13.0	0.0	0.0	0.0	0.0	0.0	0.0	0.0	0.0	0.0	0.0	3.9
Manufacture of Soft Drinks, Production of Mineral waters and Other bottled waters	42.728	-0.4	-0.2	0.0	0.5	0.1	0.1	-0.8	-0.4	-0.6	-0.1	0.3	-0.1	-4.5
<b>MANUFACTURE OF TOBACCO PRODUCTS</b>	<b>25.344</b>	-0.4	0.7	-0.1	1.8	0.2	1.0	-1.0	-0.7	-0.5	0.3	0.5	-0.2	-0.8
Manufacture of Tobacco Products	25.344	-0.4	0.7	-0.1	1.8	0.2	1.0	-1.0	-0.7	-0.5	0.3	0.5	-0.2	-0.8
<b>MANUFACTURE OF TEXTILES</b>	<b>19.225</b>	0.0	0.0	0.0	0.0	0.0	0.0	0.0	0.0	0.0	10.9	1.3	0.0	2.5
Manufacture of made-up textile articles, except apparel	19.225	0.0	0.0	0.0	0.0	0.0	0.0	0.0	0.0	0.0	10.9	1.3	0.0	2.5
<b>MANUFACTURE OF WEARING APPAREL</b>	<b>55.243</b>	0.0	1.4	0.0	0.0	0.0	0.0	0.1	0.0	0.0	2.5	1.1	0.0	3.6
Manufacture of wearing apparel, except fur apparel	55.243	0.0	1.4	0.0	0.0	0.0	0.0	0.1	0.0	0.0	2.5	1.1	0.0	3.6
<b>MANUFACTURE OF LEATHER &amp; RELATED PRODUCTS</b>	<b>15.917</b>	-1.5	0.1	-0.1	1.8	0.2	-4.9	-0.9	-0.6	-0.3	0.3	-0.9	-0.2	5.9
Tanning and dressing of leather; dressing and dyeing of fur	11.844	-2.2	0.1	-0.1	2.6	0.3	-7.4	-1.4	-0.9	-0.7	0.5	0.7	-0.2	9.0
Manufacture of footwear	4.073	0.0	0.0	0.0	0.0	0.0	0.0	0.0	0.0	0.4	0.0	-3.4	0.0	0.0
<b>MANUFACTURE OF WOOD AND PRODUCTS OF WOOD, CORK, EXCEPT FURNITURE</b>	<b>7.316</b>	0.0	0.0	0.0	0.2	0.0	0.0	-0.1	-0.1	0.0	0.0	0.0	0.0	-0.1
Manufacture of Builders' Carpentry & Joinery	7.316	0.0	0.0	0.0	0.2	0.0	0.0	-0.1	-0.1	0.0	0.0	0.0	0.0	-0.1
<b>MANUFACTURE OF PAPER &amp; PAPER PRODUCTS</b>	<b>15.858</b>	2.9	1.1	-1.3	2.2	-1.1	-4.7	-0.8	-1.5	-0.5	-0.6	0.5	-0.2	-0.9
Manufacture of pulp, paper and paperboard	9.068	4.1	1.1	-1.5	2.6	-1.4	-5.8	-0.7	-1.8	-0.6	-0.7	0.6	-0.2	-1.2
Manufacture of corrugated paper and paperboard and of containers of paper and paperboard	2.931	-5.6	1.6	0.0	0.0	0.0	0.0	0.0	0.0	0.0	0.0	0.0	0.0	0.0
Manufacture of other articles of paper and paperboard	3.860	-0.1	0.0	0.0	0.4	0.0	0.0	-2.1	-0.1	-0.1	0.3	0.1	0.0	-0.2
<b>PRINTING AND REPRODUCTION OF RECORDED MEDIA</b>	<b>25.329</b>	0.0	-13.9	0.0	0.0	0.0	0.0	0.0	0.0	0.0	0.0	0.0	0.0	0.0
Printing	25.329	0.0	-13.9	0.0	0.0	0.0	0.0	0.0	0.0	0.0	0.0	0.0	0.0	0.0
<b>MANUFACTURE OF CHEMICALS &amp; CHEMICAL PRODUCTS</b>	<b>72.487</b>	1.1	-0.4	0.0	2.7	0.1	0.7	-0.1	-0.2	-0.2	-0.6	1.6	0.0	0.2
Manufacture of paints, varnishes and similar coatings, printing ink and mastics	10.065	0.0	2.8	0.0	0.0	0.0	0.0	0.0	0.0	0.0	0.0	0.0	0.0	0.0
Manufacture of Soap, Detergents, cleaning and Polishing preparations	49.967	1.6	-1.1	0.0	3.8	0.1	1.0	-0.2	-0.3	-0.2	-0.8	2.2	-0.1	0.3
Manufacture of Other chemical Products n.e.c	12.456	0.1	-0.2	0.0	0.6	0.0	0.0	0.0	0.0	0.0	-0.2	0.3	0.0	0.1

**Table1c; Continued**

Industry Group	Weight	Dec-19	Jan-20	Feb-20	Mar-20	Apr-20	May-20	Jun-20	Jul-20	Aug-20	Sep-20	Oct-20	Nov-20	Dec-20
<b>MANUFACTURE OF PHARMACEUTICALS, MEDICINAL CHEMICAL &amp; BOTANICAL PRODUCTS</b>	<b>23.736</b>	-0.5	-1.1	0.0	-0.5	3.0	-0.1	3.1	5.7	1.2	1.5	0.0	-1.0	-0.1
Manufacture of Pharmaceuticals, medicinal chemical and botanical products	23.736	-0.5	-1.1	0.0	-0.5	3.0	-0.1	3.1	5.7	1.2	1.5	0.0	-1.0	-0.1
<b>MANUFACTURE OF RUBBER &amp; PLASTIC PRODUCTS</b>	<b>26.455</b>	0.0	-1.1	0.0	0.2	-0.4	0.0	-0.1	-0.3	0.1	-0.1	0.1	0.0	2.1
Manufacture of Plastic products	26.455	0.0	-1.1	0.0	0.2	-0.4	0.0	-0.1	-0.3	0.1	-0.1	0.1	0.0	2.1
<b>MANUFACTURE OF OTHER NON-METALLIC MINERAL PRODUCTS</b>	<b>137.550</b>	-0.1	-0.3	-0.1	0.2	0.0	0.0	-0.1	0.9	0.3	-0.2	0.1	0.0	-0.1
Manufacture of Clay Building Materials	58.241	0.0	-0.5	0.0	0.0	0.0	0.0	0.0	0.3	0.6	-0.9	0.0	0.0	0.0
Manufacture of Cement, Lime and Plaster	60.121	-0.2	0.0	0.0	0.7	0.1	0.0	-0.4	2.2	-0.2	0.7	0.2	-0.1	-0.4
Manufacture of Articles of Concrete, cement and plaster	19.188	-0.2	-0.4	-0.4	0.0	0.0	0.0	0.0	0.0	0.6	0.0	0.0	0.0	0.0
<b>MANUFACTURE OF BASIC METALS</b>	<b>14.534</b>	-0.5	0.6	0.0	2.1	0.2	0.2	-1.4	1.1	-0.3	4.5	-0.3	0.1	0.4
Manufacture of basic iron and steel	14.534	-0.5	0.6	0.0	2.1	0.2	0.2	-1.4	1.1	-0.3	4.5	-0.3	0.1	0.4
<b>MANUFACTURE OF FABRICATED METAL PRODUCTS, EXCEPT MACHINERY AND EQUIPMENT</b>	<b>10.831</b>	4.6	2.8	0.7	1.6	0.0	-0.1	-0.8	0.6	-0.5	5.9	1.8	-0.2	2.6
Manufacture of Other Fabricated Metals n.e.c	10.831	4.6	2.8	0.7	1.6	0.0	-0.1	-0.8	0.6	-0.5	5.9	1.8	-0.2	2.6
<b>MANUFACTURE OF ELECTRICAL EQUIPMENT</b>	<b>15.239</b>	0.0	-0.9	0.0	0.2	0.0	0.0	-0.1	-0.1	-0.1	-2.7	0.1	0.0	-0.1
Manufacture of Batteries and Accumulators	4.384	0.0	0.0	0.0	0.0	0.0	0.0	0.0	0.0	0.0	-7.4	0.0	0.0	0.0
Manufacture of other electronic and electric wires and cables	10.856	-0.1	-1.6	0.0	0.3	0.0	0.0	-0.2	-0.1	-0.1	0.4	0.1	0.0	-0.1
<b>MANUFACTURE OF FURNITURE</b>	<b>13.868</b>	0.0	0.0	0.0	0.0	0.0	0.0	0.0	0.0	0.1	-11.1	0.5	0.0	0.0
Manufacture of Furniture	13.868	0.0	0.0	0.0	0.0	0.0	0.0	0.0	0.0	0.1	-11.1	0.5	0.0	0.0
<b>PPI-UTILITIES</b>	<b>78.600</b>	-0.3	0.4	0.4	1.1	1.2	-1.0	-1.1	-0.5	-0.2	0.2	0.3	0.0	-0.5
Water collection, treatment and supply	18.284	0.0	0.0	0.0	0.0	0.0	0.0	0.0	0.0	0.0	0.0	0.0	0.0	0.0
Electricity power generation	60.316	-0.4	0.5	0.5	1.3	1.5	-1.2	-1.3	-0.6	-0.3	0.2	0.4	0.0	-0.6

Source: UBOS

**Table2a: Monthly Producer Price Indices -Manufacturing (Local Market), December 2019 to December 2020**

Base period: July 2009 to June 2010=100

Industry Group	Weight	Dec-19	Jan-20	Feb-20	Mar-20	Apr-20	May-20	Jun-20	Jul-20	Aug-20	Sep-20	Oct-20	Nov-20	Dec-20
<b>PPI-M LOCAL</b>	<b>738.598</b>	<b>173.81</b>	<b>173.29</b>	<b>173.25</b>	<b>174.10</b>	<b>174.35</b>	<b>174.21</b>	<b>174.76</b>	<b>175.04</b>	<b>175.17</b>	<b>176.61</b>	<b>177.73</b>	<b>177.69</b>	<b>181.21</b>
<b>MANUFACTURE OF FOOD PRODUCTS</b>	<b>257.790</b>	<b>183.41</b>	<b>184.82</b>	<b>184.75</b>	<b>185.96</b>	<b>186.10</b>	<b>185.81</b>	<b>186.81</b>	<b>186.19</b>	<b>186.21</b>	<b>185.66</b>	<b>186.83</b>	<b>186.96</b>	<b>192.31</b>
MANUFACTURE OF BEVERAGES	71.418	154.95	144.50	144.40	143.49	143.54	143.54	143.29	143.29	142.87	142.52	142.49	142.49	140.19
MANUFACTURE OF TOBACCO PRODUCTS	10.587	134.42	134.47	134.42	135.58	135.73	135.80	135.16	134.74	134.43	134.64	134.94	134.83	134.29
MANUFACTURE OF TEXTILES	19.225	221.06	221.06	221.06	221.06	221.06	221.06	221.06	221.06	221.06	245.26	248.36	248.36	254.50
MANUFACTURE OF WEARING APPAREL	55.243	218.22	221.25	221.25	221.25	221.25	221.25	221.39	221.39	221.39	226.94	229.38	229.38	237.61
MANUFACTURE OF LEATHER & RELATED PRODUCTS	4.073	162.98	162.98	162.98	162.98	162.98	162.98	162.98	162.98	162.98	163.70	163.70	158.09	158.09
MANUFACTURE OF WOOD AND PRODUCTS OF WOOD, CORK, EXCEPT FURNITURE	7.316	159.38	159.39	159.38	159.63	159.66	159.67	159.54	159.43	159.38	159.43	159.49	159.47	159.36
MANUFACTURE OF PAPER & PAPER PRODUCTS	12.134	137.55	138.92	138.91	139.18	139.21	139.23	138.29	138.28	138.09	136.49	136.56	136.53	136.39
PRINTING AND REPRODUCTION OF RECORDED MEDIA	25.329	159.91	137.73	137.73	137.73	137.73	137.73	137.73	137.73	137.73	137.73	137.73	137.73	137.73
MANUFACTURE OF CHEMICALS & CHEMICAL PRODUCTS	64.540	156.81	156.26	156.26	160.51	160.51	160.51	160.83	160.83	160.79	159.40	161.83	161.83	162.39
MANUFACTURE OF PHARMACEUTICALS, MEDICINAL CHEMICAL & BOTANICAL PRODUCTS	20.817	184.42	182.09	182.11	180.43	186.46	186.20	193.10	205.49	208.32	211.64	211.57	209.35	209.36
MANUFACTURE OF RUBBER & PLASTIC PRODUCTS	22.947	149.29	147.20	147.20	147.20	146.34	146.34	146.38	146.02	146.36	146.00	146.00	146.00	150.19
MANUFACTURE OF OTHER NON-METALLIC MINERAL PRODUCTS	112.706	135.66	135.21	135.13	135.13	135.13	135.13	135.13	135.40	136.03	135.59	135.59	135.59	135.59
MANUFACTURE OF BASIC METALS	14.534	184.66	185.86	185.79	189.68	190.03	190.34	187.75	189.83	189.33	197.82	197.31	197.47	198.30
MANUFACTURE OF FABRICATED METAL PRODUCTS, EXCEPT MACHINERY AND EQUIPMENT	10.831	174.96	179.84	181.04	183.92	183.91	183.73	182.17	183.25	182.38	193.05	196.62	196.15	201.21
MANUFACTURE OF ELECTRICAL EQUIPMENT	15.239	167.78	166.20	166.19	166.51	166.55	166.57	166.39	166.28	166.19	161.73	161.82	161.79	161.63
MANUFACTURE OF FURNITURE	13.868	176.18	176.18	176.18	176.18	176.18	176.18	176.18	176.18	176.39	156.78	157.59	157.59	157.59
<b>MANUFACTURE OF FOOD PRODUCTS</b>	<b>257.790</b>	<b>183.41</b>	<b>184.82</b>	<b>184.75</b>	<b>185.96</b>	<b>186.10</b>	<b>185.81</b>	<b>186.81</b>	<b>186.19</b>	<b>186.21</b>	<b>185.66</b>	<b>186.83</b>	<b>186.96</b>	<b>192.31</b>
Processing and Preserving of meat	8.219	263.26	264.81	266.98	267.66	266.98	266.98	268.98	266.98	266.98	266.98	266.98	266.98	266.98
Manufacture of Vegetable and Animal Oils and Fats	57.955	194.28	201.26	201.62	204.57	204.23	204.23	208.58	211.47	212.50	212.50	216.69	216.69	231.13
Manufacture of Dairy Products	5.625	162.89	162.89	162.89	162.89	162.89	162.89	162.89	162.89	162.89	162.89	162.89	162.89	162.89
Manufacture of Grain Milling products	82.113	174.43	171.85	172.01	173.02	174.26	175.14	174.53	169.21	168.20	166.69	166.01	166.52	169.92
Manufacture of Bakery products	25.197	172.88	172.88	172.88	172.88	172.88	172.88	172.88	172.88	172.88	172.88	173.46	173.46	173.19
Manufacture of Sugar	41.587	144.91	147.19	144.36	146.41	143.78	136.71	134.28	132.84	134.15	132.08	132.17	132.17	130.31
Coffee Processing	12.539	234.98	234.98	234.98	234.98	234.98	234.98	234.98	237.52	235.86	235.86	235.86	235.86	235.86
Tea Processing	11.654	151.79	151.54	148.96	144.40	150.84	152.61	152.82	154.45	155.02	155.05	155.65	155.63	153.91
Manufacture of Prepared Animal Feeds	12.901	196.86	196.86	196.86	196.86	196.86	196.86	196.86	196.86	196.86	196.86	196.86	196.86	198.14

Table2a; Continued

Industry Group	Weight	Dec-19	Jan-20	Feb-20	Mar-20	Apr-20	May-20	Jun-20	Jul-20	Aug-20	Sep-20	Oct-20	Nov-20	Dec-20
<b>MANUFACTURE OF BEVERAGES</b>	<b>71.418</b>	<b>154.95</b>	<b>144.50</b>	<b>144.40</b>	<b>143.49</b>	<b>143.54</b>	<b>143.54</b>	<b>143.29</b>	<b>143.29</b>	<b>142.87</b>	<b>142.52</b>	<b>142.49</b>	<b>142.49</b>	<b>140.19</b>
Distilling, rectifying and blending of spirits	2.606	135.62	134.62	131.28	131.28	132.85	132.85	132.08	132.08	129.01	130.06	129.31	129.31	131.95
Manufacture of Malt Liquors and Malt	32.174	164.95	143.53	143.53	143.53	143.53	143.53	143.53	143.53	143.53	143.53	143.53	143.53	149.13
Manufacture of Soft Drinks, Production of Mineral waters and Other bottled waters	36.638	146.32	145.98	145.98	144.24	144.24	144.24	143.82	143.82	143.17	142.43	142.43	142.43	131.90
<b>MANUFACTURE OF TOBACCO PRODUCTS</b>	<b>10.587</b>	<b>134.42</b>	<b>134.47</b>	<b>134.42</b>	<b>135.58</b>	<b>135.73</b>	<b>135.80</b>	<b>135.16</b>	<b>134.74</b>	<b>134.43</b>	<b>134.64</b>	<b>134.94</b>	<b>134.83</b>	<b>134.29</b>
Manufacture of Tobacco Products	10.587	134.42	134.47	134.42	135.58	135.73	135.80	135.16	134.74	134.43	134.64	134.94	134.83	134.29
<b>MANUFACTURE OF TEXTILES</b>	<b>19.225</b>	<b>221.06</b>	<b>221.06</b>	<b>221.06</b>	<b>221.06</b>	<b>221.06</b>	<b>221.06</b>	<b>221.06</b>	<b>221.06</b>	<b>221.06</b>	<b>245.26</b>	<b>248.36</b>	<b>248.36</b>	<b>254.50</b>
Manufacture of made-up textile articles, except apparel	19.225	221.06	221.06	221.06	221.06	221.06	221.06	221.06	221.06	221.06	245.26	248.36	248.36	254.50
<b>MANUFACTURE OF WEARING APPAREL</b>	<b>55.243</b>	<b>218.22</b>	<b>221.25</b>	<b>221.25</b>	<b>221.25</b>	<b>221.25</b>	<b>221.25</b>	<b>221.39</b>	<b>221.39</b>	<b>221.39</b>	<b>226.94</b>	<b>229.38</b>	<b>229.38</b>	<b>237.61</b>
Manufacture of wearing apparel, except fur apparel	55.243	218.22	221.25	221.25	221.25	221.25	221.25	221.39	221.39	221.39	226.94	229.38	229.38	237.61
<b>MANUFACTURE OF LEATHER &amp; RELATED PRODUCTS</b>	<b>4.073</b>	<b>162.98</b>	<b>162.98</b>	<b>162.98</b>	<b>162.98</b>	<b>162.98</b>	<b>162.98</b>	<b>162.98</b>	<b>162.98</b>	<b>163.70</b>	<b>163.70</b>	<b>158.09</b>	<b>158.09</b>	<b>158.09</b>
Manufacture of footwear	4.073	162.98	162.98	162.98	162.98	162.98	162.98	162.98	162.98	163.70	163.70	158.09	158.09	158.09
<b>MANUFACTURE OF WOOD AND PRODUCTS OF WOOD, CORK, EXCEPT FURNITURE</b>	<b>7.316</b>	<b>159.38</b>	<b>159.39</b>	<b>159.38</b>	<b>159.63</b>	<b>159.66</b>	<b>159.67</b>	<b>159.54</b>	<b>159.43</b>	<b>159.38</b>	<b>159.43</b>	<b>159.49</b>	<b>159.47</b>	<b>159.36</b>
Manufacture of Builders' Carpentry & Joinery	7.316	159.38	159.39	159.38	159.63	159.66	159.67	159.54	159.43	159.38	159.43	159.49	159.47	159.36
<b>MANUFACTURE OF PAPER &amp; PAPER PRODUCTS</b>	<b>12.134</b>	<b>137.55</b>	<b>138.92</b>	<b>138.91</b>	<b>139.18</b>	<b>139.21</b>	<b>139.23</b>	<b>138.29</b>	<b>138.28</b>	<b>138.09</b>	<b>136.49</b>	<b>136.56</b>	<b>136.53</b>	<b>136.39</b>
Manufacture of pulp, paper and paperboard	5.344	136.96	138.79	138.78	139.03	139.06	139.07	138.94	139.04	138.71	134.79	134.85	134.82	134.66
Manufacture of corrugated paper and paperboard and of containers of paper and paperboard	2.931	139.16	141.44	141.44	141.44	141.44	141.44	141.44	141.44	141.44	141.44	141.44	141.44	141.44
Manufacture of other articles of paper and paperboard	3.860	137.12	137.14	137.12	137.63	137.70	137.73	134.85	134.67	134.54	134.92	135.05	135.00	134.77
<b>PRINTING AND REPRODUCTION OF RECORDED MEDIA</b>	<b>25.329</b>	<b>159.91</b>	<b>137.73</b>	<b>137.73</b>	<b>137.73</b>	<b>137.73</b>	<b>137.73</b>	<b>137.73</b>	<b>137.73</b>	<b>137.73</b>	<b>137.73</b>	<b>137.73</b>	<b>137.73</b>	<b>137.73</b>
Printing	25.329	159.91	137.73	137.73	137.73	137.73	137.73	137.73	137.73	137.73	137.73	137.73	137.73	137.73
<b>MANUFACTURE OF CHEMICALS &amp; CHEMICAL PRODUCTS</b>	<b>64.540</b>	<b>156.81</b>	<b>156.26</b>	<b>156.26</b>	<b>160.51</b>	<b>160.51</b>	<b>160.51</b>	<b>160.83</b>	<b>160.83</b>	<b>160.79</b>	<b>159.40</b>	<b>161.83</b>	<b>161.83</b>	<b>162.39</b>
Manufacture of paints, varnishes and similar coatings, printing ink and mastics	10.065	153.03	157.37	157.37	157.37	157.37	157.37	157.37	157.37	157.37	157.37	157.37	157.37	157.37
Manufacture of Soap, Detergents, cleaning and Polishing preparations	42.019	153.88	152.02	152.02	158.48	158.48	158.48	158.97	158.97	158.91	156.81	160.47	160.47	161.30
Manufacture of Other chemical Products n.e.c	12.456	168.60	168.32	168.32	169.26	169.26	169.26	169.33	169.33	169.32	169.02	169.54	169.54	169.66

**Table2a; Continued**

Industry Group	Weight	Dec-19	Jan-20	Feb-20	Mar-20	Apr-20	May-20	Jun-20	Jul-20	Aug-20	Sep-20	Oct-20	Nov-20	Dec-20
<b>MANUFACTURE OF PHARMACEUTICALS, MEDICINAL CHEMICAL &amp; BOTANICAL PRODUCTS</b>	<b>20.817</b>	<b>184.42</b>	<b>182.09</b>	<b>182.11</b>	<b>180.43</b>	<b>186.46</b>	<b>186.20</b>	<b>193.10</b>	<b>205.49</b>	<b>208.32</b>	<b>211.64</b>	<b>211.57</b>	<b>209.35</b>	<b>209.36</b>
Manufacture of Pharmaceuticals, medicinal chemical and botanical products	20.817	184.42	182.09	182.11	180.43	186.46	186.20	193.10	205.49	208.32	211.64	211.57	209.35	209.36
<b>MANUFACTURE OF RUBBER &amp; PLASTIC PRODUCTS</b>	<b>22.947</b>	<b>149.29</b>	<b>147.20</b>	<b>147.20</b>	<b>147.20</b>	<b>146.34</b>	<b>146.34</b>	<b>146.38</b>	<b>146.02</b>	<b>146.36</b>	<b>146.00</b>	<b>146.00</b>	<b>146.00</b>	<b>150.19</b>
Manufacture of Plastic products	22.947	149.29	147.20	147.20	147.20	146.34	146.34	146.38	146.02	146.36	146.00	146.00	146.00	150.19
<b>MANUFACTURE OF OTHER NON-METALLIC MINERAL PRODUCTS</b>	<b>112.706</b>	<b>135.66</b>	<b>135.21</b>	<b>135.13</b>	<b>135.13</b>	<b>135.13</b>	<b>135.13</b>	<b>135.13</b>	<b>135.40</b>	<b>136.03</b>	<b>135.59</b>	<b>135.59</b>	<b>135.59</b>	<b>135.59</b>
Manufacture of Clay Building Materials	58.241	139.74	139.10	139.10	139.10	139.10	139.10	139.10	139.58	140.47	139.18	139.18	139.18	139.18
Manufacture of Cement, Lime and Plaster	35.277	127.80	127.80	127.80	127.80	127.80	127.80	127.80	127.80	127.80	128.77	128.77	128.77	128.77
Manufacture of Articles of Concrete, cement and plaster	19.188	136.49	135.98	135.49	135.49	135.49	135.49	135.49	135.49	136.37	136.31	136.31	136.31	136.31
<b>MANUFACTURE OF BASIC METALS</b>	<b>14.534</b>	<b>184.66</b>	<b>185.86</b>	<b>185.79</b>	<b>189.68</b>	<b>190.03</b>	<b>190.34</b>	<b>187.75</b>	<b>189.83</b>	<b>189.33</b>	<b>197.82</b>	<b>197.31</b>	<b>197.47</b>	<b>198.30</b>
Manufacture of basic iron and steel	14.534	184.66	185.86	185.79	189.68	190.03	190.34	187.75	189.83	189.33	197.82	197.31	197.47	198.30
<b>MANUFACTURE OF FABRICATED METAL PRODUCTS, EXCEPT MACHINERY AND EQUIPMENT</b>	<b>10.831</b>	<b>174.96</b>	<b>179.84</b>	<b>181.04</b>	<b>183.92</b>	<b>183.91</b>	<b>183.73</b>	<b>182.17</b>	<b>183.25</b>	<b>182.38</b>	<b>193.05</b>	<b>196.62</b>	<b>196.15</b>	<b>201.21</b>
Manufacture of Other Fabricated Metals n.e.c	10.831	174.96	179.84	181.04	183.92	183.91	183.73	182.17	183.25	182.38	193.05	196.62	196.15	201.21
<b>MANUFACTURE OF ELECTRICAL EQUIPMENT</b>	<b>15.239</b>	<b>167.78</b>	<b>166.20</b>	<b>166.19</b>	<b>166.51</b>	<b>166.55</b>	<b>166.57</b>	<b>166.39</b>	<b>166.28</b>	<b>166.19</b>	<b>161.73</b>	<b>161.82</b>	<b>161.79</b>	<b>161.63</b>
Manufacture of batteries and accumulators	4.384	187.10	187.10	187.10	187.10	187.10	187.10	187.10	187.10	187.10	173.16	173.16	173.16	173.16
Manufacture of other electronic and electric wires and cables	10.856	158.58	156.09	156.07	156.57	156.64	156.67	156.39	156.21	156.07	156.63	156.76	156.71	156.48
<b>MANUFACTURE OF FURNITURE</b>	<b>13.868</b>	<b>176.18</b>	<b>176.18</b>	<b>176.18</b>	<b>176.18</b>	<b>176.18</b>	<b>176.18</b>	<b>176.18</b>	<b>176.18</b>	<b>176.39</b>	<b>156.78</b>	<b>157.59</b>	<b>157.59</b>	<b>157.59</b>
Manufacture of Furniture	13.868	176.18	176.18	176.18	176.18	176.18	176.18	176.18	176.18	176.39	156.78	157.59	157.59	157.59

Source: UBOS

**Table2b: Annual Changes in Producer Price Index -Manufacturing (Domestic Market), December 2019 to December 2020**

Base period: July 2009 to June 2010=100

Industry Group	Weight	Dec-19	Jan-20	Feb-20	Mar-20	Apr-20	May-20	Jun-20	Jul-20	Aug-20	Sep-20	Oct-20	Nov-20	Dec-20
<b>PPI-M LOCAL</b>	<b>738.598</b>	<b>1.1</b>	<b>1.3</b>	<b>1.1</b>	<b>1.2</b>	<b>0.9</b>	<b>1.3</b>	<b>1.9</b>	<b>1.9</b>	<b>2.0</b>	<b>2.9</b>	<b>3.4</b>	<b>3.0</b>	<b>4.3</b>
<b>MANUFACTURE OF FOOD PRODUCTS</b>	<b>257.790</b>	<b>1.7</b>	<b>4.2</b>	<b>3.9</b>	<b>4.6</b>	<b>4.4</b>	<b>5.3</b>	<b>6.4</b>	<b>5.8</b>	<b>5.6</b>	<b>4.6</b>	<b>4.7</b>	<b>3.5</b>	<b>4.9</b>
<b>MANUFACTURE OF BEVERAGES</b>	<b>71.418</b>	<b>0.0</b>	<b>-6.7</b>	<b>-6.7</b>	<b>-7.3</b>	<b>-8.5</b>	<b>-8.5</b>	<b>-8.6</b>	<b>-8.6</b>	<b>-8.9</b>	<b>-8.4</b>	<b>-8.4</b>	<b>-8.3</b>	<b>-9.5</b>
<b>MANUFACTURE OF TOBACCO PRODUCTS</b>	<b>10.587</b>	<b>1.8</b>	<b>2.0</b>	<b>2.2</b>	<b>2.8</b>	<b>2.6</b>	<b>2.4</b>	<b>2.2</b>	<b>2.2</b>	<b>2.0</b>	<b>2.3</b>	<b>0.2</b>	<b>0.1</b>	<b>-0.1</b>
<b>MANUFACTURE OF TEXTILES</b>	<b>19.225</b>	<b>-2.9</b>	<b>-2.9</b>	<b>-2.9</b>	<b>-2.9</b>	<b>-2.9</b>	<b>-2.6</b>	<b>-2.6</b>	<b>-1.4</b>	<b>-1.4</b>	<b>10.9</b>	<b>12.4</b>	<b>12.4</b>	<b>15.1</b>
<b>MANUFACTURE OF WEARING APPAREL</b>	<b>55.243</b>	<b>3.6</b>	<b>5.0</b>	<b>5.0</b>	<b>3.0</b>	<b>1.7</b>	<b>1.8</b>	<b>1.8</b>	<b>1.1</b>	<b>1.1</b>	<b>4.0</b>	<b>5.2</b>	<b>5.2</b>	<b>8.9</b>
<b>MANUFACTURE OF LEATHER &amp; RELATED PRODUCTS</b>	<b>4.073</b>	<b>-4.8</b>	<b>-4.8</b>	<b>-4.8</b>	<b>-4.8</b>	<b>-4.8</b>	<b>-2.0</b>	<b>0.0</b>	<b>0.0</b>	<b>0.4</b>	<b>0.4</b>	<b>-3.0</b>	<b>-3.0</b>	<b>-3.0</b>
<b>MANUFACTURE OF WOOD AND PRODUCTS OF WOOD, CORK, EXCEPT FURNITURE</b>	<b>7.316</b>	<b>1.1</b>	<b>1.1</b>	<b>1.2</b>	<b>1.3</b>	<b>0.7</b>	<b>0.7</b>	<b>0.7</b>	<b>-0.3</b>	<b>-0.4</b>	<b>-0.3</b>	<b>0.0</b>	<b>0.0</b>	<b>0.0</b>
<b>MANUFACTURE OF PAPER &amp; PAPER PRODUCTS</b>	<b>12.134</b>	<b>-2.0</b>	<b>-0.9</b>	<b>-0.2</b>	<b>-1.3</b>	<b>-1.3</b>	<b>-1.0</b>	<b>-1.7</b>	<b>-1.5</b>	<b>-0.1</b>	<b>-2.1</b>	<b>-2.1</b>	<b>-2.1</b>	<b>-0.8</b>
<b>PRINTING AND REPRODUCTION OF RECORDED MEDIA</b>	<b>25.329</b>	<b>2.2</b>	<b>-11.9</b>	<b>-13.9</b>	<b>-13.9</b>	<b>-13.9</b>	<b>-13.9</b>	<b>-13.9</b>	<b>-13.9</b>	<b>-13.9</b>	<b>-13.9</b>	<b>-13.9</b>	<b>-13.9</b>	<b>-13.9</b>
<b>MANUFACTURE OF CHEMICALS &amp; CHEMICAL PRODUCTS</b>	<b>64.540</b>	<b>-2.7</b>	<b>-2.5</b>	<b>-2.5</b>	<b>0.2</b>	<b>-0.8</b>	<b>-0.8</b>	<b>-0.6</b>	<b>0.3</b>	<b>1.6</b>	<b>1.2</b>	<b>3.9</b>	<b>4.9</b>	<b>3.6</b>
<b>MANUFACTURE OF PHARMACEUTICALS, MEDICINAL CHEMICAL &amp; BOTANICAL PRODUCTS</b>	<b>20.817</b>	<b>-3.1</b>	<b>-4.4</b>	<b>-4.5</b>	<b>-6.1</b>	<b>-2.9</b>	<b>-2.6</b>	<b>1.3</b>	<b>7.9</b>	<b>9.3</b>	<b>15.1</b>	<b>14.5</b>	<b>13.4</b>	<b>13.5</b>
<b>MANUFACTURE OF RUBBER &amp; PLASTIC PRODUCTS</b>	<b>22.947</b>	<b>-2.0</b>	<b>-3.4</b>	<b>-3.1</b>	<b>-3.1</b>	<b>-3.4</b>	<b>-3.3</b>	<b>-2.4</b>	<b>-2.5</b>	<b>-2.2</b>	<b>-2.2</b>	<b>-2.2</b>	<b>-2.2</b>	<b>0.6</b>
<b>MANUFACTURE OF OTHER NON-METALLIC MINERAL PRODUCTS</b>	<b>112.706</b>	<b>6.1</b>	<b>2.2</b>	<b>1.0</b>	<b>1.0</b>	<b>1.0</b>	<b>1.4</b>	<b>1.5</b>	<b>1.0</b>	<b>2.0</b>	<b>0.0</b>	<b>0.0</b>	<b>-0.1</b>	<b>-0.1</b>
<b>MANUFACTURE OF BASIC METALS</b>	<b>14.534</b>	<b>-2.8</b>	<b>-2.4</b>	<b>-2.4</b>	<b>-0.6</b>	<b>-0.4</b>	<b>-0.4</b>	<b>-0.3</b>	<b>1.0</b>	<b>0.9</b>	<b>6.2</b>	<b>6.9</b>	<b>6.4</b>	<b>7.4</b>
<b>MANUFACTURE OF FABRICATED METAL PRODUCTS, EXCEPT MACHINERY AND EQUIPMENT</b>	<b>10.831</b>	<b>0.9</b>	<b>5.7</b>	<b>6.0</b>	<b>7.5</b>	<b>5.6</b>	<b>5.3</b>	<b>4.7</b>	<b>4.9</b>	<b>4.4</b>	<b>11.7</b>	<b>14.8</b>	<b>17.3</b>	<b>15.0</b>
<b>MANUFACTURE OF ELECTRICAL EQUIPMENT</b>	<b>15.239</b>	<b>-0.7</b>	<b>-1.6</b>	<b>-1.8</b>	<b>-1.7</b>	<b>-1.7</b>	<b>-1.8</b>	<b>-1.8</b>	<b>-1.8</b>	<b>-1.8</b>	<b>-4.4</b>	<b>-3.6</b>	<b>-3.6</b>	<b>-3.7</b>
<b>MANUFACTURE OF FURNITURE</b>	<b>13.868</b>	<b>2.7</b>	<b>2.7</b>	<b>2.9</b>	<b>2.9</b>	<b>2.1</b>	<b>2.3</b>	<b>2.3</b>	<b>0.1</b>	<b>0.3</b>	<b>-11.0</b>	<b>-10.6</b>	<b>-10.6</b>	<b>-10.6</b>
<b>MANUFACTURE OF FOOD PRODUCTS</b>	<b>257.790</b>	<b>1.7</b>	<b>4.2</b>	<b>3.9</b>	<b>4.6</b>	<b>4.4</b>	<b>5.3</b>	<b>6.4</b>	<b>5.8</b>	<b>5.6</b>	<b>4.6</b>	<b>4.7</b>	<b>3.5</b>	<b>4.9</b>
Processing and Preserving of meat	8.219	7.5	8.5	8.5	8.8	8.5	8.5	9.3	8.5	8.5	8.2	8.2	3.2	1.4
Manufacture of Vegetable and Animal Oils and Fats	57.955	3.2	8.2	10.1	11.6	12.7	13.1	15.5	17.4	17.3	16.4	18.0	17.7	19.0
Manufacture of Dairy Products	5.625	0.0	0.0	0.0	0.0	0.0	0.0	0.0	0.0	0.0	0.0	0.0	0.0	0.0
Manufacture of Grain Milling products	82.113	7.6	5.4	7.5	8.0	7.9	5.6	4.4	-0.3	-0.7	-2.5	-2.9	-4.5	-2.6
Manufacture of Bakery products	25.197	-0.1	-0.1	-0.1	-0.1	0.0	0.2	0.2	0.1	0.1	0.1	0.5	0.5	0.2
Manufacture of Sugar	41.587	-3.3	0.1	-0.7	0.7	-0.4	-5.3	0.5	0.7	2.0	-2.0	-6.0	-8.8	-10.1
Coffee Processing	12.539	19.4	19.4	3.6	3.6	0.0	0.0	0.0	1.1	0.4	0.4	0.4	0.4	0.4
Tea Processing	11.654	-0.9	-0.6	-0.7	-4.2	1.2	0.5	4.6	6.5	3.4	1.3	0.7	1.4	1.4
Manufacture of Prepared Animal Feeds	12.901	-24.5	-16.5	-16.5	-16.5	-16.5	0.0	0.0	0.0	0.0	0.0	0.0	0.0	0.7

Table2b; Continued

Industry Group	Weight	Dec-19	Jan-20	Feb-20	Mar-20	Apr-20	May-20	Jun-20	Jul-20	Aug-20	Sep-20	Oct-20	Nov-20	Dec-20
<b>MANUFACTURE OF BEVERAGES</b>	<b>71.418</b>	<b>0.0</b>	<b>-6.7</b>	<b>-6.7</b>	<b>-7.3</b>	<b>-8.5</b>	<b>-8.5</b>	<b>-8.6</b>	<b>-8.6</b>	<b>-8.9</b>	<b>-8.4</b>	<b>-8.4</b>	<b>-8.3</b>	<b>-9.5</b>
Distilling, rectifying and blending of spirits	2.606	-23.5	-24.0	-25.2	-25.2	-23.3	-24.0	-23.7	-23.7	-25.5	-14.4	-14.6	-11.1	-2.7
Manufacture of Malt Liquors and Malt	32.174	1.4	-11.8	-11.8	-11.8	-13.0	-13.0	-13.0	-13.0	-13.0	-13.0	-13.0	-13.0	-9.6
Manufacture of Soft Drinks, Production of Mineral waters and Other bottled waters	36.638	0.7	0.5	0.5	-0.7	-2.2	-2.2	-2.5	-2.5	-2.9	-3.0	-3.0	-3.0	-9.9
<b>MANUFACTURE OF TOBACCO PRODUCTS</b>	<b>10.587</b>	<b>1.8</b>	<b>2.0</b>	<b>2.2</b>	<b>2.8</b>	<b>2.6</b>	<b>2.4</b>	<b>2.2</b>	<b>2.2</b>	<b>2.0</b>	<b>2.3</b>	<b>0.2</b>	<b>0.1</b>	<b>-0.1</b>
Manufacture of Tobacco Products	10.587	1.8	2.0	2.2	2.8	2.6	2.4	2.2	2.2	2.0	2.3	0.2	0.1	-0.1
<b>MANUFACTURE OF TEXTILES</b>	<b>19.225</b>	<b>-2.9</b>	<b>-2.9</b>	<b>-2.9</b>	<b>-2.9</b>	<b>-2.9</b>	<b>-2.6</b>	<b>-2.6</b>	<b>-1.4</b>	<b>-1.4</b>	<b>10.9</b>	<b>12.4</b>	<b>12.4</b>	<b>15.1</b>
Manufacture of made-up textile articles, except apparel	19.225	-2.9	-2.9	-2.9	-2.9	-2.9	-2.6	-2.6	-1.4	-1.4	10.9	12.4	12.4	15.1
<b>MANUFACTURE OF WEARING APPAREL</b>	<b>55.243</b>	<b>3.6</b>	<b>5.0</b>	<b>5.0</b>	<b>3.0</b>	<b>1.7</b>	<b>1.8</b>	<b>1.8</b>	<b>1.1</b>	<b>1.1</b>	<b>4.0</b>	<b>5.2</b>	<b>5.2</b>	<b>8.9</b>
Manufacture of wearing apparel, except fur apparel	55.243	3.6	5.0	5.0	3.0	1.7	1.8	1.8	1.1	1.1	4.0	5.2	5.2	8.9
<b>MANUFACTURE OF LEATHER &amp; RELATED PRODUCTS</b>	<b>4.073</b>	<b>-4.8</b>	<b>-4.8</b>	<b>-4.8</b>	<b>-4.8</b>	<b>-4.8</b>	<b>-2.0</b>	<b>0.0</b>	<b>0.0</b>	<b>0.4</b>	<b>0.4</b>	<b>-3.0</b>	<b>-3.0</b>	<b>-3.0</b>
Manufacture of footwear	4.073	-4.8	-4.8	-4.8	-4.8	-4.8	-2.0	0.0	0.0	0.4	0.4	-3.0	-3.0	-3.0
<b>MANUFACTURE OF WOOD AND PRODUCTS OF WOOD, CORK, EXCEPT FURNITURE</b>	<b>7.316</b>	<b>1.1</b>	<b>1.1</b>	<b>1.2</b>	<b>1.3</b>	<b>0.7</b>	<b>0.7</b>	<b>0.7</b>	<b>-0.3</b>	<b>-0.4</b>	<b>-0.3</b>	<b>0.0</b>	<b>0.0</b>	<b>0.0</b>
Manufacture of Builders' Carpentry & Joinery	7.316	1.1	1.1	1.2	1.3	0.7	0.7	0.7	-0.3	-0.4	-0.3	0.0	0.0	0.0
<b>MANUFACTURE OF PAPER &amp; PAPER PRODUCTS</b>	<b>12.134</b>	<b>-2.0</b>	<b>-0.9</b>	<b>-0.2</b>	<b>-1.3</b>	<b>-1.3</b>	<b>-1.0</b>	<b>-1.7</b>	<b>-1.5</b>	<b>-0.1</b>	<b>-2.1</b>	<b>-2.1</b>	<b>-2.1</b>	<b>-0.8</b>
Manufacture of pulp, paper and paperboard	5.344	-1.8	-0.3	1.5	-0.8	-0.8	-0.8	-0.8	-0.4	1.8	-1.1	-1.1	-1.1	-1.7
Manufacture of corrugated paper and paperboard and of containers of paper and paperboard	2.931	-4.8	-3.2	-3.2	-4.0	-4.0	-4.0	-4.0	-4.0	-2.6	-4.0	-4.0	-4.0	1.6
Manufacture of other articles of paper and paperboard	3.860	0.1	0.1	0.2	0.4	0.3	1.7	-0.8	-0.8	-0.6	-1.6	-1.6	-1.6	-1.7
<b>PRINTING AND REPRODUCTION OF RECORDED MEDIA</b>	<b>25.329</b>	<b>2.2</b>	<b>-11.9</b>	<b>-13.9</b>	<b>-13.9</b>	<b>-13.9</b>	<b>-13.9</b>	<b>-13.9</b>	<b>-13.9</b>	<b>-13.9</b>	<b>-13.9</b>	<b>-13.9</b>	<b>-13.9</b>	<b>-13.9</b>
Printing	25.329	2.2	-11.9	-13.9	-13.9	-13.9	-13.9	-13.9	-13.9	-13.9	-13.9	-13.9	-13.9	-13.9
<b>MANUFACTURE OF CHEMICALS &amp; CHEMICAL PRODUCTS</b>	<b>64.540</b>	<b>-2.7</b>	<b>-2.5</b>	<b>-2.5</b>	<b>0.2</b>	<b>-0.8</b>	<b>-0.8</b>	<b>-0.6</b>	<b>0.3</b>	<b>1.6</b>	<b>1.2</b>	<b>3.9</b>	<b>4.9</b>	<b>3.6</b>
Manufacture of paints, varnishes and similar coatings, printing ink and mastics	10.065	0.0	2.8	2.8	2.8	2.8	2.8	2.8	2.8	2.8	2.8	2.8	2.8	2.8
Manufacture of Soap, Detergents, cleaning and Polishing preparations	42.019	-5.8	-6.2	-6.2	-2.2	-1.7	-1.7	-1.4	-0.1	1.9	1.4	5.5	7.0	4.8
Manufacture of Other chemical Products n.e.c	12.456	5.7	5.6	5.6	6.2	-0.5	-0.5	-0.4	-0.2	0.0	-0.1	0.5	0.7	0.6



**Table2b; Continued**

Industry Group	Weight	Dec-19	Jan-20	Feb-20	Mar-20	Apr-20	May-20	Jun-20	Jul-20	Aug-20	Sep-20	Oct-20	Nov-20	Dec-20
<b>MANUFACTURE OF PHARMACEUTICALS, MEDICINAL CHEMICAL &amp; BOTANICAL PRODUCTS</b>	<b>20.817</b>	<b>-3.1</b>	<b>-4.4</b>	<b>-4.5</b>	<b>-6.1</b>	<b>-2.9</b>	<b>-2.6</b>	<b>1.3</b>	<b>7.9</b>	<b>9.3</b>	<b>15.1</b>	<b>14.5</b>	<b>13.4</b>	<b>13.5</b>
Manufacture of Pharmaceuticals, medicinal chemical and botanical products	20.817	-3.1	-4.4	-4.5	-6.1	-2.9	-2.6	1.3	7.9	9.3	15.1	14.5	13.4	13.5
<b>MANUFACTURE OF RUBBER &amp; PLASTIC PRODUCTS</b>	<b>22.947</b>	<b>-2.0</b>	<b>-3.4</b>	<b>-3.1</b>	<b>-3.1</b>	<b>-3.4</b>	<b>-3.3</b>	<b>-2.4</b>	<b>-2.5</b>	<b>-2.2</b>	<b>-2.2</b>	<b>-2.2</b>	<b>-2.2</b>	<b>0.6</b>
Manufacture of Plastic products	22.947	-2.0	-3.4	-3.1	-3.1	-3.4	-3.3	-2.4	-2.5	-2.2	-2.2	-2.2	-2.2	0.6
<b>MANUFACTURE OF OTHER NON-METALLIC MINERAL PRODUCTS</b>	<b>112.706</b>	<b>6.1</b>	<b>2.2</b>	<b>1.0</b>	<b>1.0</b>	<b>1.0</b>	<b>1.4</b>	<b>1.5</b>	<b>1.0</b>	<b>2.0</b>	<b>0.0</b>	<b>0.0</b>	<b>-0.1</b>	<b>-0.1</b>
Manufacture of Clay Building Materials	58.241	13.3	5.1	3.3	3.3	3.3	4.0	4.0	3.0	3.6	-0.4	-0.4	-0.4	-0.4
Manufacture of Cement, Lime and Plaster	35.277	-1.6	-1.6	-2.2	-2.2	-2.2	-1.8	-1.8	-1.8	0.0	0.8	0.8	0.8	0.8
Manufacture of Articles of Concrete, cement and plaster	19.188	0.2	-0.2	-1.0	-1.0	-1.0	-1.0	-0.7	-0.7	-0.1	-0.1	-0.1	-0.3	-0.1
<b>MANUFACTURE OF BASIC METALS</b>	<b>14.534</b>	<b>-2.8</b>	<b>-2.4</b>	<b>-2.4</b>	<b>-0.6</b>	<b>-0.4</b>	<b>-0.4</b>	<b>-0.3</b>	<b>1.0</b>	<b>0.9</b>	<b>6.2</b>	<b>6.9</b>	<b>6.4</b>	<b>7.4</b>
Manufacture of basic iron and steel	14.534	-2.8	-2.4	-2.4	-0.6	-0.4	-0.4	-0.3	1.0	0.9	6.2	6.9	6.4	7.4
<b>MANUFACTURE OF FABRICATED METAL PRODUCTS, EXCEPT MACHINERY AND EQUIPMENT</b>	<b>10.831</b>	<b>0.9</b>	<b>5.7</b>	<b>6.0</b>	<b>7.5</b>	<b>5.6</b>	<b>5.3</b>	<b>4.7</b>	<b>4.9</b>	<b>4.4</b>	<b>11.7</b>	<b>14.8</b>	<b>17.3</b>	<b>15.0</b>
Manufacture of Other Fabricated Metals n.e.c	10.831	0.9	5.7	6.0	7.5	5.6	5.3	4.7	4.9	4.4	11.7	14.8	17.3	15.0
<b>MANUFACTURE OF ELECTRICAL EQUIPMENT</b>	<b>15.239</b>	<b>-0.7</b>	<b>-1.6</b>	<b>-1.8</b>	<b>-1.7</b>	<b>-1.7</b>	<b>-1.8</b>	<b>-1.8</b>	<b>-1.8</b>	<b>-1.8</b>	<b>-4.4</b>	<b>-3.6</b>	<b>-3.6</b>	<b>-3.7</b>
Manufacture of batteries and accumulators	4.384	-2.1	-2.1	-2.1	-2.1	-2.1	-2.1	-2.1	-2.1	-2.1	-9.4	-7.4	-7.4	-7.4
Manufacture of other electronic and electric wires and cables	10.856	0.3	-1.3	-1.6	-1.4	-1.4	-1.5	-1.6	-1.6	-1.6	-1.2	-1.2	-1.2	-1.3
<b>MANUFACTURE OF FURNITURE</b>	<b>13.868</b>	<b>2.7</b>	<b>2.7</b>	<b>2.9</b>	<b>2.9</b>	<b>2.1</b>	<b>2.3</b>	<b>2.3</b>	<b>0.1</b>	<b>0.3</b>	<b>-11.0</b>	<b>-10.6</b>	<b>-10.6</b>	<b>-10.6</b>
Manufacture of Furniture	13.868	2.7	2.7	2.9	2.9	2.1	2.3	2.3	0.1	0.3	-11.0	-10.6	-10.6	-10.6

Source: UBOS

**Table2c: Monthly Changes in Producer Price Indices- Manufacturing (Domestic Market), December 2019 to December 2020**

Base period: July 2009 to June 2010=100

Industry Group	Weight	Dec-19	Jan-20	Feb-20	Mar-20	Apr-20	May-20	Jun-20	Jul-20	Aug-20	Sep-20	Oct-20	Nov-20	Dec-20
<b>PPI-M LOCAL</b>	<b>738.598</b>	<b>0.7</b>	<b>-0.3</b>	<b>0.0</b>	<b>0.5</b>	<b>0.1</b>	<b>-0.1</b>	<b>0.3</b>	<b>0.2</b>	<b>0.1</b>	<b>0.8</b>	<b>0.6</b>	<b>0.0</b>	<b>2.0</b>
<b>MANUFACTURE OF FOOD PRODUCTS</b>	<b>257.790</b>	<b>1.5</b>	<b>0.8</b>	<b>0.0</b>	<b>0.7</b>	<b>0.1</b>	<b>-0.2</b>	<b>0.5</b>	<b>-0.3</b>	<b>0.0</b>	<b>-0.3</b>	<b>0.6</b>	<b>0.1</b>	<b>2.9</b>
<b>MANUFACTURE OF BEVERAGES</b>	<b>71.418</b>	<b>-0.3</b>	<b>-6.7</b>	<b>-0.1</b>	<b>-0.6</b>	<b>0.0</b>	<b>0.0</b>	<b>-0.2</b>	<b>0.0</b>	<b>-0.3</b>	<b>-0.2</b>	<b>0.0</b>	<b>0.0</b>	<b>-1.6</b>
<b>MANUFACTURE OF TOBACCO PRODUCTS</b>	<b>10.587</b>	<b>-0.2</b>	<b>0.0</b>	<b>0.0</b>	<b>0.9</b>	<b>0.1</b>	<b>0.1</b>	<b>-0.5</b>	<b>-0.3</b>	<b>-0.2</b>	<b>0.2</b>	<b>0.2</b>	<b>-0.1</b>	<b>-0.4</b>
<b>MANUFACTURE OF TEXTILES</b>	<b>19.225</b>	<b>0.0</b>	<b>0.0</b>	<b>0.0</b>	<b>0.0</b>	<b>0.0</b>	<b>0.0</b>	<b>0.0</b>	<b>0.0</b>	<b>0.0</b>	<b>10.9</b>	<b>1.3</b>	<b>0.0</b>	<b>2.5</b>
<b>MANUFACTURE OF WEARING APPAREL</b>	<b>55.243</b>	<b>0.0</b>	<b>1.4</b>	<b>0.0</b>	<b>0.0</b>	<b>0.0</b>	<b>0.0</b>	<b>0.1</b>	<b>0.0</b>	<b>0.0</b>	<b>2.5</b>	<b>1.1</b>	<b>0.0</b>	<b>3.6</b>
<b>MANUFACTURE OF LEATHER &amp; RELATED PRODUCTS</b>	<b>4.073</b>	<b>0.0</b>	<b>0.0</b>	<b>0.0</b>	<b>0.0</b>	<b>0.0</b>	<b>0.0</b>	<b>0.0</b>	<b>0.0</b>	<b>0.4</b>	<b>0.0</b>	<b>-3.4</b>	<b>0.0</b>	<b>0.0</b>
<b>MANUFACTURE OF WOOD AND PRODUCTS OF WOOD, CORK, EXCEPT FURNITURE</b>	<b>7.316</b>	<b>0.0</b>	<b>0.0</b>	<b>0.0</b>	<b>0.2</b>	<b>0.0</b>	<b>0.0</b>	<b>-0.1</b>	<b>-0.1</b>	<b>0.0</b>	<b>0.0</b>	<b>0.0</b>	<b>0.0</b>	<b>-0.1</b>
<b>MANUFACTURE OF PAPER &amp; PAPER PRODUCTS</b>	<b>12.134</b>	<b>-1.4</b>	<b>1.0</b>	<b>0.0</b>	<b>0.2</b>	<b>0.0</b>	<b>0.0</b>	<b>-0.7</b>	<b>0.0</b>	<b>-0.1</b>	<b>-1.2</b>	<b>0.0</b>	<b>0.0</b>	<b>-0.1</b>
<b>PRINTING AND REPRODUCTION OF RECORDED MEDIA</b>	<b>25.329</b>	<b>0.0</b>	<b>-13.9</b>	<b>0.0</b>	<b>0.0</b>	<b>0.0</b>	<b>0.0</b>	<b>0.0</b>	<b>0.0</b>	<b>0.0</b>	<b>0.0</b>	<b>0.0</b>	<b>0.0</b>	<b>0.0</b>
<b>MANUFACTURE OF CHEMICALS &amp; CHEMICAL PRODUCTS</b>	<b>64.540</b>	<b>1.6</b>	<b>-0.3</b>	<b>0.0</b>	<b>2.7</b>	<b>0.0</b>	<b>0.0</b>	<b>0.2</b>	<b>0.0</b>	<b>0.0</b>	<b>-0.9</b>	<b>1.5</b>	<b>0.0</b>	<b>0.3</b>
<b>MANUFACTURE OF PHARMACEUTICALS, MEDICINAL CHEMICAL &amp; BOTANICAL PRODUCTS</b>	<b>20.817</b>	<b>-0.1</b>	<b>-1.3</b>	<b>0.0</b>	<b>-0.9</b>	<b>3.3</b>	<b>-0.1</b>	<b>3.7</b>	<b>6.4</b>	<b>1.4</b>	<b>1.6</b>	<b>0.0</b>	<b>-1.0</b>	<b>0.0</b>
<b>MANUFACTURE OF RUBBER &amp; PLASTIC PRODUCTS</b>	<b>22.947</b>	<b>0.0</b>	<b>-1.4</b>	<b>0.0</b>	<b>0.0</b>	<b>-0.6</b>	<b>0.0</b>	<b>0.0</b>	<b>-0.2</b>	<b>0.2</b>	<b>-0.2</b>	<b>0.0</b>	<b>0.0</b>	<b>2.9</b>
<b>MANUFACTURE OF OTHER NON-METALLIC MINERAL PRODUCTS</b>	<b>112.706</b>	<b>0.0</b>	<b>-0.3</b>	<b>-0.1</b>	<b>0.0</b>	<b>0.0</b>	<b>0.0</b>	<b>0.0</b>	<b>0.2</b>	<b>0.5</b>	<b>-0.3</b>	<b>0.0</b>	<b>0.0</b>	<b>0.0</b>
<b>MANUFACTURE OF BASIC METALS</b>	<b>14.534</b>	<b>-0.5</b>	<b>0.6</b>	<b>0.0</b>	<b>2.1</b>	<b>0.2</b>	<b>0.2</b>	<b>-1.4</b>	<b>1.1</b>	<b>-0.3</b>	<b>4.5</b>	<b>-0.3</b>	<b>0.1</b>	<b>0.4</b>
<b>MANUFACTURE OF FABRICATED METAL PRODUCTS, EXCEPT MACHINERY AND EQUIPMENT</b>	<b>10.831</b>	<b>4.6</b>	<b>2.8</b>	<b>0.7</b>	<b>1.6</b>	<b>0.0</b>	<b>-0.1</b>	<b>-0.8</b>	<b>0.6</b>	<b>-0.5</b>	<b>5.9</b>	<b>1.8</b>	<b>-0.2</b>	<b>2.6</b>
<b>MANUFACTURE OF ELECTRICAL EQUIPMENT</b>	<b>15.239</b>	<b>0.0</b>	<b>-0.9</b>	<b>0.0</b>	<b>0.2</b>	<b>0.0</b>	<b>0.0</b>	<b>-0.1</b>	<b>-0.1</b>	<b>-0.1</b>	<b>-2.7</b>	<b>0.1</b>	<b>0.0</b>	<b>-0.1</b>
<b>MANUFACTURE OF FURNITURE</b>	<b>13.868</b>	<b>0.0</b>	<b>0.0</b>	<b>0.0</b>	<b>0.0</b>	<b>0.0</b>	<b>0.0</b>	<b>0.0</b>	<b>0.0</b>	<b>0.1</b>	<b>-11.1</b>	<b>0.5</b>	<b>0.0</b>	<b>0.0</b>
<b>MANUFACTURE OF FOOD PRODUCTS</b>	<b>257.790</b>	<b>1.5</b>	<b>0.8</b>	<b>0.0</b>	<b>0.7</b>	<b>0.1</b>	<b>-0.2</b>	<b>0.5</b>	<b>-0.3</b>	<b>0.0</b>	<b>-0.3</b>	<b>0.6</b>	<b>0.1</b>	<b>2.9</b>
Processing and Preserving of meat	8.219	1.7	0.6	0.8	0.3	-0.3	0.0	0.8	-0.7	0.0	0.0	0.0	0.0	0.0
Manufacture of Vegetable and Animal Oils and Fats	57.955	5.5	3.6	0.2	1.5	-0.2	0.0	2.1	1.4	0.5	0.0	2.0	0.0	6.7
Manufacture of Dairy Products	5.625	0.0	0.0	0.0	0.0	0.0	0.0	0.0	0.0	0.0	0.0	0.0	0.0	0.0
Manufacture of Grain Milling products	82.113	0.1	-1.5	0.1	0.6	0.7	0.5	-0.3	-3.0	-0.6	-0.9	-0.4	0.3	2.0
Manufacture of Bakery products	25.197	0.1	0.0	0.0	0.0	0.0	0.0	0.0	0.0	0.0	0.0	0.3	0.0	-0.2
Manufacture of Sugar	41.587	0.0	1.6	-1.9	1.4	-1.8	-4.9	-1.8	-1.1	1.0	-1.5	0.1	0.0	-1.4
Coffee Processing	12.539	0.0	0.0	0.0	0.0	0.0	0.0	0.0	1.1	-0.7	0.0	0.0	0.0	0.0
Tea Processing	11.654	-1.1	-0.2	-1.7	-3.1	4.5	1.2	0.1	1.1	0.4	0.0	0.4	0.0	-1.1
Manufacture of Prepared Animal Feeds	12.901	0.0	0.0	0.0	0.0	0.0	0.0	0.0	0.0	0.0	0.0	0.0	0.0	0.7

Table2c; Continued

Industry Group	Weight	Dec-19	Jan-20	Feb-20	Mar-20	Apr-20	May-20	Jun-20	Jul-20	Aug-20	Sep-20	Oct-20	Nov-20	Dec-20
<b>MANUFACTURE OF BEVERAGES</b>	<b>71.418</b>	<b>-0.3</b>	<b>-6.7</b>	<b>-0.1</b>	<b>-0.6</b>	<b>0.0</b>	<b>0.0</b>	<b>-0.2</b>	<b>0.0</b>	<b>-0.3</b>	<b>-0.2</b>	<b>0.0</b>	<b>0.0</b>	<b>-1.6</b>
Distilling, rectifying and blending of spirits	2.606	-6.8	-0.7	-2.5	0.0	1.2	0.0	-0.6	0.0	-2.3	0.8	-0.6	0.0	2.0
Manufacture of Malt Liquors and Malt	32.174	0.0	-13.0	0.0	0.0	0.0	0.0	0.0	0.0	0.0	0.0	0.0	0.0	3.9
Manufacture of Soft Drinks, Production of Mineral waters and Other bottled waters	36.638	-0.3	-0.2	0.0	-1.2	0.0	0.0	-0.3	0.0	-0.5	-0.5	0.0	0.0	-7.4
<b>MANUFACTURE OF TOBACCO PRODUCTS</b>	<b>10.587</b>	<b>-0.2</b>	<b>0.0</b>	<b>0.0</b>	<b>0.9</b>	<b>0.1</b>	<b>0.1</b>	<b>-0.5</b>	<b>-0.3</b>	<b>-0.2</b>	<b>0.2</b>	<b>0.2</b>	<b>-0.1</b>	<b>-0.4</b>
Manufacture of Tobacco Products	10.587	-0.2	0.0	0.0	0.9	0.1	0.1	-0.5	-0.3	-0.2	0.2	0.2	-0.1	-0.4
<b>MANUFACTURE OF TEXTILES</b>	<b>19.225</b>	<b>0.0</b>	<b>0.0</b>	<b>0.0</b>	<b>0.0</b>	<b>0.0</b>	<b>0.0</b>	<b>0.0</b>	<b>0.0</b>	<b>0.0</b>	<b>10.9</b>	<b>1.3</b>	<b>0.0</b>	<b>2.5</b>
Manufacture of made-up textile articles, except apparel	19.225	0.0	0.0	0.0	0.0	0.0	0.0	0.0	0.0	0.0	10.9	1.3	0.0	2.5
<b>MANUFACTURE OF WEARING APPAREL</b>	<b>55.243</b>	<b>0.0</b>	<b>1.4</b>	<b>0.0</b>	<b>0.0</b>	<b>0.0</b>	<b>0.0</b>	<b>0.1</b>	<b>0.0</b>	<b>0.0</b>	<b>2.5</b>	<b>1.1</b>	<b>0.0</b>	<b>3.6</b>
Manufacture of wearing apparel, except fur apparel	55.243	0.0	1.4	0.0	0.0	0.0	0.0	0.1	0.0	0.0	2.5	1.1	0.0	3.6
<b>MANUFACTURE OF LEATHER &amp; RELATED PRODUCTS</b>	<b>4.073</b>	<b>0.0</b>	<b>0.0</b>	<b>0.0</b>	<b>0.0</b>	<b>0.0</b>	<b>0.0</b>	<b>0.0</b>	<b>0.0</b>	<b>0.4</b>	<b>0.0</b>	<b>-3.4</b>	<b>0.0</b>	<b>0.0</b>
Manufacture of footwear	4.073	0.0	0.0	0.0	0.0	0.0	0.0	0.0	0.0	0.4	0.0	-3.4	0.0	0.0
<b>MANUFACTURE OF WOOD AND PRODUCTS OF WOOD, CORK, EXCEPT FURNITURE</b>	<b>7.316</b>	<b>0.0</b>	<b>0.0</b>	<b>0.0</b>	<b>0.2</b>	<b>0.0</b>	<b>0.0</b>	<b>-0.1</b>	<b>-0.1</b>	<b>0.0</b>	<b>0.0</b>	<b>0.0</b>	<b>0.0</b>	<b>-0.1</b>
Manufacture of Builders' Carpentry & Joinery	7.316	0.0	0.0	0.0	0.2	0.0	0.0	-0.1	-0.1	0.0	0.0	0.0	0.0	-0.1
<b>MANUFACTURE OF PAPER &amp; PAPER PRODUCTS</b>	<b>12.134</b>	<b>-1.4</b>	<b>1.0</b>	<b>0.0</b>	<b>0.2</b>	<b>0.0</b>	<b>0.0</b>	<b>-0.7</b>	<b>0.0</b>	<b>-0.1</b>	<b>-1.2</b>	<b>0.0</b>	<b>0.0</b>	<b>-0.1</b>
Manufacture of pulp, paper and paperboard	5.344	0.5	1.3	0.0	0.2	0.0	0.0	-0.1	0.1	-0.2	-2.8	0.0	0.0	-0.1
Manufacture of corrugated paper and paperboard and of containers of paper and paperboard	2.931	-5.6	1.6	0.0	0.0	0.0	0.0	0.0	0.0	0.0	0.0	0.0	0.0	0.0
Manufacture of other articles of paper and paperboard	3.860	-0.1	0.0	0.0	0.4	0.0	0.0	-2.1	-0.1	-0.1	0.3	0.1	0.0	-0.2
<b>PRINTING AND REPRODUCTION OF RECORDED MEDIA</b>	<b>25.329</b>	<b>0.0</b>	<b>-13.9</b>	<b>0.0</b>	<b>0.0</b>	<b>0.0</b>	<b>0.0</b>	<b>0.0</b>	<b>0.0</b>	<b>0.0</b>	<b>0.0</b>	<b>0.0</b>	<b>0.0</b>	<b>0.0</b>
Printing	25.329	0.0	-13.9	0.0	0.0	0.0	0.0	0.0	0.0	0.0	0.0	0.0	0.0	0.0
<b>MANUFACTURE OF CHEMICALS &amp; CHEMICAL PRODUCTS</b>	<b>64.540</b>	<b>1.6</b>	<b>-0.3</b>	<b>0.0</b>	<b>2.7</b>	<b>0.0</b>	<b>0.0</b>	<b>0.2</b>	<b>0.0</b>	<b>0.0</b>	<b>-0.9</b>	<b>1.5</b>	<b>0.0</b>	<b>0.3</b>
Manufacture of paints, varnishes and similar coatings, printing ink and mastics	10.065	0.0	2.8	0.0	0.0	0.0	0.0	0.0	0.0	0.0	0.0	0.0	0.0	0.0
Manufacture of Soap, Detergents, cleaning and Polishing preparations	42.019	2.6	-1.2	0.0	4.3	0.0	0.0	0.3	0.0	0.0	-1.3	2.3	0.0	0.5
Manufacture of Other chemical Products n.e.c	12.456	0.1	-0.2	0.0	0.6	0.0	0.0	0.0	0.0	0.0	-0.2	0.3	0.0	0.1

**Table2c; Continued**

Industry Group	Weight	Dec-19	Jan-20	Feb-20	Mar-20	Apr-20	May-20	Jun-20	Jul-20	Aug-20	Sep-20	Oct-20	Nov-20	Dec-20
<b>MANUFACTURE OF PHARMACEUTICALS, MEDICINAL CHEMICAL &amp; BOTANICAL PRODUCTS</b>	<b>20.817</b>	<b>-0.1</b>	<b>-1.3</b>	<b>0.0</b>	<b>-0.9</b>	<b>3.3</b>	<b>-0.1</b>	<b>3.7</b>	<b>6.4</b>	<b>1.4</b>	<b>1.6</b>	<b>0.0</b>	<b>-1.0</b>	<b>0.0</b>
Manufacture of Pharmaceuticals, medicinal chemical and botanical products	20.817	-0.1	-1.3	0.0	-0.9	3.3	-0.1	3.7	6.4	1.4	1.6	0.0	-1.0	0.0
<b>MANUFACTURE OF RUBBER &amp; PLASTIC PRODUCTS</b>	<b>22.947</b>	<b>0.0</b>	<b>-1.4</b>	<b>0.0</b>	<b>0.0</b>	<b>-0.6</b>	<b>0.0</b>	<b>0.0</b>	<b>-0.2</b>	<b>0.2</b>	<b>-0.2</b>	<b>0.0</b>	<b>0.0</b>	<b>2.9</b>
Manufacture of Plastic products	22.947	0.0	-1.4	0.0	0.0	-0.6	0.0	0.0	-0.2	0.2	-0.2	0.0	0.0	2.9
<b>MANUFACTURE OF OTHER NON-METALLIC MINERAL PRODUCTS</b>	<b>112.706</b>	<b>0.0</b>	<b>-0.3</b>	<b>-0.1</b>	<b>0.0</b>	<b>0.0</b>	<b>0.0</b>	<b>0.0</b>	<b>0.2</b>	<b>0.5</b>	<b>-0.3</b>	<b>0.0</b>	<b>0.0</b>	<b>0.0</b>
Manufacture of Clay Building Materials	58.241	0.0	-0.5	0.0	0.0	0.0	0.0	0.0	0.3	0.6	-0.9	0.0	0.0	0.0
Manufacture of Cement, Lime and Plaster	35.277	0.0	0.0	0.0	0.0	0.0	0.0	0.0	0.0	0.0	0.8	0.0	0.0	0.0
Manufacture of Articles of Concrete, cement and plaster	19.188	-0.2	-0.4	-0.4	0.0	0.0	0.0	0.0	0.0	0.6	0.0	0.0	0.0	0.0
<b>MANUFACTURE OF BASIC METALS</b>	<b>14.534</b>	<b>-0.5</b>	<b>0.6</b>	<b>0.0</b>	<b>2.1</b>	<b>0.2</b>	<b>0.2</b>	<b>-1.4</b>	<b>1.1</b>	<b>-0.3</b>	<b>4.5</b>	<b>-0.3</b>	<b>0.1</b>	<b>0.4</b>
Manufacture of basic iron and steel	14.534	-0.5	0.6	0.0	2.1	0.2	0.2	-1.4	1.1	-0.3	4.5	-0.3	0.1	0.4
<b>MANUFACTURE OF FABRICATED METAL PRODUCTS, EXCEPT MACHINERY AND EQUIPMENT</b>	<b>10.831</b>	<b>4.6</b>	<b>2.8</b>	<b>0.7</b>	<b>1.6</b>	<b>0.0</b>	<b>-0.1</b>	<b>-0.8</b>	<b>0.6</b>	<b>-0.5</b>	<b>5.9</b>	<b>1.8</b>	<b>-0.2</b>	<b>2.6</b>
Manufacture of Other Fabricated Metals n.e.c	10.831	4.6	2.8	0.7	1.6	0.0	-0.1	-0.8	0.6	-0.5	5.9	1.8	-0.2	2.6
<b>MANUFACTURE OF ELECTRICAL EQUIPMENT</b>	<b>15.239</b>	<b>0.0</b>	<b>-0.9</b>	<b>0.0</b>	<b>0.2</b>	<b>0.0</b>	<b>0.0</b>	<b>-0.1</b>	<b>-0.1</b>	<b>-0.1</b>	<b>-2.7</b>	<b>0.1</b>	<b>0.0</b>	<b>-0.1</b>
Manufacture of batteries and accumulators	4.384	0.0	0.0	0.0	0.0	0.0	0.0	0.0	0.0	0.0	-7.4	0.0	0.0	0.0
Manufacture of other electronic and electric wires and cables	10.856	-0.1	-1.6	0.0	0.3	0.0	0.0	-0.2	-0.1	-0.1	0.4	0.1	0.0	-0.1
<b>MANUFACTURE OF FURNITURE</b>	<b>13.868</b>	<b>0.0</b>	<b>0.0</b>	<b>0.0</b>	<b>0.0</b>	<b>0.0</b>	<b>0.0</b>	<b>0.0</b>	<b>0.0</b>	<b>0.1</b>	<b>-11.1</b>	<b>0.5</b>	<b>0.0</b>	<b>0.0</b>
Manufacture of Furniture	13.868	0.0	0.0	0.0	0.0	0.0	0.0	0.0	0.0	0.1	-11.1	0.5	0.0	0.0

Source: UBOS

**Table3a: Monthly Producer Price Indices - Manufacturing (Export Market), December 2019 to December 2020**

Base period: July 2009 to June 2010=100

Industry Group	Weight	Dec-19	Jan-20	Feb-20	Mar-20	Apr-20	May-20	Jun-20	Jul-20	Aug-20	Sep-20	Oct-20	Nov-20	Dec-20
<b>PPI-M EXPORT</b>	<b>182.802</b>	<b>205.71</b>	<b>211.18</b>	<b>208.62</b>	<b>220.95</b>	<b>212.44</b>	<b>210.39</b>	<b>201.10</b>	<b>203.54</b>	<b>199.75</b>	<b>204.80</b>	<b>203.68</b>	<b>196.52</b>	<b>202.68</b>
<b>MANUFACTURE OF FOOD PRODUCTS</b>	<b>107.169</b>	<b>223.43</b>	<b>230.98</b>	<b>227.97</b>	<b>243.66</b>	<b>231.55</b>	<b>229.65</b>	<b>217.42</b>	<b>221.64</b>	<b>216.74</b>	<b>223.67</b>	<b>221.97</b>	<b>211.75</b>	<b>220.39</b>
MANUFACTURE OF BEVERAGES	6.090	250.10	249.85	249.58	256.10	256.39	256.78	253.16	250.83	249.06	250.25	251.94	251.31	248.32
MANUFACTURE OF TOBACCO PRODUCTS	14.756	136.36	137.84	137.70	141.10	141.56	143.80	141.87	140.64	139.70	140.33	141.22	140.89	139.30
MANUFACTURE OF LEATHER & RELATED PRODUCTS	11.844	143.20	143.37	143.21	146.95	147.45	136.61	134.68	133.44	132.51	133.14	134.03	133.70	145.73
MANUFACTURE OF PAPER & PAPER PRODUCTS	3.724	281.62	284.77	279.91	288.09	283.67	265.07	262.86	257.14	255.53	254.62	256.33	255.69	252.26
MANUFACTURE OF CHEMICALS & CHEMICAL PRODUCTS	7.947	195.23	193.75	193.54	198.60	199.27	206.50	203.59	201.72	200.30	201.26	204.85	204.34	203.61
MANUFACTURE OF PHARMACEUTICALS, MEDICINAL CHEMICAL & BOTANICAL PRODUCTS	2.919	179.59	179.80	179.61	184.30	184.93	185.21	182.60	180.92	179.64	180.50	181.72	181.26	179.11
MANUFACTURE OF RUBBER & PLASTIC PRODUCTS	3.508	188.74	188.83	188.74	190.70	190.96	191.08	189.99	189.29	188.76	189.12	189.63	189.44	188.53
MANUFACTURE OF OTHER NON-METALLIC MINERAL PRODUCTS	24.844	103.55	103.67	103.56	106.26	106.62	106.78	105.28	113.00	112.21	112.74	113.50	113.22	111.87
<b>MANUFACTURE OF FOOD PRODUCTS</b>	<b>107.169</b>	<b>223.43</b>	<b>230.98</b>	<b>227.97</b>	<b>243.66</b>	<b>231.55</b>	<b>229.65</b>	<b>217.42</b>	<b>221.64</b>	<b>216.74</b>	<b>223.67</b>	<b>221.97</b>	<b>211.75</b>	<b>220.39</b>
Processing & Preserving of Fish, Crustaceans and Molluscs	19.899	218.02	269.95	281.64	290.57	227.82	230.84	227.99	259.11	238.37	265.47	272.65	241.33	233.23
Manufacture of Vegetable and Animal Oils and Fats	21.466	233.93	234.37	236.39	267.90	274.00	292.00	274.87	272.34	280.91	281.78	286.65	285.94	293.28
Manufacture of Sugar	15.058	224.16	228.04	227.79	233.75	234.54	234.89	231.58	229.45	227.84	216.21	193.88	193.40	216.34
Coffee Processing	33.812	244.85	231.67	209.52	224.04	229.11	201.13	177.97	166.85	153.01	162.17	142.39	130.88	167.42
Tea Processing	16.934	100.16	99.78	92.56	84.06	103.69	102.95	100.55	105.73	115.36	118.99	118.00	120.62	113.60
<b>MANUFACTURE OF BEVERAGES</b>	<b>6.090</b>	<b>250.10</b>	<b>249.85</b>	<b>249.58</b>	<b>256.10</b>	<b>256.39</b>	<b>256.78</b>	<b>253.16</b>	<b>250.83</b>	<b>249.06</b>	<b>250.25</b>	<b>251.94</b>	<b>251.31</b>	<b>248.32</b>
Manufacture of Soft Drinks, Production of Mineral waters and Other bottled waters	6.090	250.10	249.85	249.58	256.10	256.39	256.78	253.16	250.83	249.06	250.25	251.94	251.31	248.32
<b>MANUFACTURE OF TOBACCO PRODUCTS</b>	<b>14.756</b>	<b>136.36</b>	<b>137.84</b>	<b>137.70</b>	<b>141.10</b>	<b>141.56</b>	<b>143.80</b>	<b>141.87</b>	<b>140.64</b>	<b>139.70</b>	<b>140.33</b>	<b>141.22</b>	<b>140.89</b>	<b>139.30</b>
Manufacture of Tobacco Products	14.756	136.36	137.84	137.70	141.10	141.56	143.80	141.87	140.64	139.70	140.33	141.22	140.89	139.30
<b>MANUFACTURE OF LEATHER &amp; RELATED PRODUCTS</b>	<b>11.844</b>	<b>143.20</b>	<b>143.37</b>	<b>143.21</b>	<b>146.95</b>	<b>147.45</b>	<b>136.61</b>	<b>134.68</b>	<b>133.44</b>	132.51	133.14	134.03	133.70	<b>145.73</b>
Tanning and dressing of leather; dressing and dyeing of fur	11.844	143.20	143.37	143.21	146.95	147.45	136.61	134.68	133.44	132.51	133.14	134.03	133.70	145.73
<b>MANUFACTURE OF PAPER &amp; PAPER PRODUCTS</b>	<b>3.724</b>	<b>281.62</b>	<b>284.77</b>	<b>279.91</b>	<b>288.09</b>	<b>283.67</b>	<b>265.07</b>	<b>262.86</b>	<b>257.14</b>	<b>255.53</b>	<b>254.62</b>	<b>256.33</b>	<b>255.69</b>	<b>252.26</b>
Manufacture of pulp, Paper & Paperboard	3.724	281.62	284.77	279.91	288.09	283.67	265.07	262.86	257.14	255.53	254.62	256.33	255.69	252.26
<b>MANUFACTURE OF CHEMICALS &amp; CHEMICAL PRODUCTS</b>	<b>7.947</b>	<b>195.23</b>	<b>193.75</b>	<b>193.54</b>	<b>198.60</b>	<b>199.27</b>	<b>206.50</b>	<b>203.59</b>	<b>201.72</b>	<b>200.30</b>	<b>201.26</b>	<b>204.85</b>	<b>204.34</b>	<b>203.61</b>
Manufacture of Soap, Detergents, cleaning and Polishing preparations	7.947	195.23	193.75	193.54	198.60	199.27	206.50	203.59	201.72	200.30	201.26	204.85	204.34	203.61

**Table3a; Continued**

Industry Group	Weight	Dec-19	Jan-20	Feb-20	Mar-20	Apr-20	May-20	Jun-20	Jul-20	Aug-20	Sep-20	Oct-20	Nov-20	Dec-20
<b>MANUFACTURE OF PHARMACEUTICALS, MEDICINAL CHEMICAL &amp; BOTANICAL PRODUCTS</b>	<b>2.919</b>	<b>179.59</b>	<b>179.80</b>	<b>179.61</b>	<b>184.30</b>	<b>184.93</b>	<b>185.21</b>	<b>182.60</b>	<b>180.92</b>	<b>179.64</b>	<b>180.50</b>	<b>181.72</b>	<b>181.26</b>	<b>179.11</b>
Manufacture of Pharmaceuticals, medicinal chemical and botanical products	2.919	179.59	179.80	179.61	184.30	184.93	185.21	182.60	180.92	179.64	180.50	181.72	181.26	179.11
<b>MANUFACTURE OF RUBBER &amp; PLASTIC PRODUCTS</b>	<b>3.508</b>	<b>188.74</b>	<b>188.83</b>	<b>188.74</b>	<b>190.70</b>	<b>190.96</b>	<b>191.08</b>	<b>189.99</b>	<b>189.29</b>	<b>188.76</b>	<b>189.12</b>	<b>189.63</b>	<b>189.44</b>	<b>188.53</b>
Manufacture of Plastic products	3.508	188.74	188.83	188.74	190.70	190.96	191.08	189.99	189.29	188.76	189.12	189.63	189.44	188.53
<b>MANUFACTURE OF OTHER NON-METALLIC MINERAL PRODUCTS</b>	<b>24.844</b>	<b>103.55</b>	<b>103.67</b>	<b>103.56</b>	<b>106.26</b>	<b>106.62</b>	<b>106.78</b>	<b>105.28</b>	<b>113.00</b>	<b>112.21</b>	<b>112.74</b>	<b>113.50</b>	<b>113.22</b>	<b>111.87</b>
Manufacture of Cement, Lime and Plaster	24.844	103.55	103.67	103.56	106.26	106.62	106.78	105.28	113.00	112.21	112.74	113.50	113.22	111.87

**Source: UBOS**

**Table 3b: Annual Changes in Price Indices - Manufacturing (Export Market), December 2019 to December 2020**

Base period: August 2009 to August 2010=100

Industry Group	Weight	Dec-19	Jan-20	Feb-20	Mar-20	Apr-20	May-20	Jun-20	Jul-20	Aug-20	Sep-20	Oct-20	Nov-20	Dec-20
<b>PPI-M EXPORT</b>	<b>182.802</b>	<b>6.4</b>	<b>9.7</b>	<b>7.1</b>	<b>11.1</b>	<b>6.2</b>	<b>8.6</b>	<b>4.8</b>	<b>9.0</b>	<b>6.0</b>	<b>5.6</b>	<b>4.8</b>	<b>0.0</b>	<b>-1.5</b>
<b>MANUFACTURE OF FOOD PRODUCTS</b>	<b>107.169</b>	<b>13.5</b>	<b>17.3</b>	<b>13.7</b>	<b>20.0</b>	<b>11.2</b>	<b>15.2</b>	<b>10.0</b>	<b>14.9</b>	<b>10.7</b>	<b>9.1</b>	<b>8.1</b>	<b>0.6</b>	<b>-1.4</b>
MANUFACTURE OF BEVERAGES	6.090	-6.1	-5.9	-5.2	-3.6	-4.3	-4.9	-5.3	-0.3	-0.9	0.1	0.2	-0.1	-0.7
MANUFACTURE OF TOBACCO PRODUCTS	14.756	2.7	4.1	4.8	6.5	5.9	6.8	6.4	6.4	5.8	6.8	6.9	2.7	2.2
MANUFACTURE OF LEATHER & RELATED PRODUCTS	11.844	-19.7	-12.6	-16.4	-27.6	-6.6	-13.2	-13.8	-10.4	-10.9	-10.1	-10.0	-8.7	1.8
MANUFACTURE OF PAPER & PAPER PRODUCTS	3.724	-2.0	-0.6	-2.2	-0.7	-3.4	-10.8	-10.3	-8.0	-10.0	-6.6	-5.4	-5.0	-10.4
MANUFACTURE OF CHEMICALS & CHEMICAL PRODUCTS	7.947	-13.7	-14.1	-13.5	-12.0	-12.5	-1.4	-1.8	-1.9	0.9	2.5	3.8	3.5	4.3
MANUFACTURE OF PHARMACEUTICALS, MEDICINAL CHEMICAL & BOTANICAL PRODUCTS	2.919	-22.4	-22.1	-21.6	-20.2	-20.6	-21.1	-21.5	-21.5	-22.0	-21.2	-21.1	-2.0	-0.3
MANUFACTURE OF RUBBER & PLASTIC PRODUCTS	3.508	-7.0	-6.9	-7.0	-6.0	-5.9	-7.9	-8.2	-8.3	-8.5	-8.2	-8.1	0.1	-0.1
MANUFACTURE OF OTHER NON-METALLIC MINERAL PRODUCTS	24.844	-1.0	-0.6	0.1	1.8	1.3	0.7	0.2	8.5	7.9	8.9	9.0	8.7	8.0
<b>MANUFACTURE OF FOOD PRODUCTS</b>	<b>107.169</b>	<b>13.5</b>	<b>17.3</b>	<b>13.7</b>	<b>20.0</b>	<b>11.2</b>	<b>15.2</b>	<b>10.0</b>	<b>14.9</b>	<b>10.7</b>	<b>9.1</b>	<b>8.1</b>	<b>0.6</b>	<b>-1.4</b>
Processing & Preserving of Fish, Crustaceans and Molluscs	19.899	16.1	39.3	29.2	36.7	-1.4	36.9	36.1	42.1	26.5	18.7	26.8	10.4	7.0
Manufacture of Vegetable and Animal Oils and Fats	21.466	-0.2	0.3	2.0	14.6	16.2	23.0	16.9	16.9	23.2	24.2	25.6	25.3	25.4
Manufacture of Sugar	15.058	-1.0	4.4	5.1	6.9	6.4	-0.9	1.9	5.2	8.1	3.1	-8.0	-8.3	-3.5
Coffee Processing	33.812	35.0	25.7	15.0	16.8	19.3	5.5	-7.3	-5.4	-20.5	-19.3	-31.0	-40.2	-31.6
Tea Processing	16.934	-11.4	-5.6	-8.7	-19.9	13.3	9.2	37.3	46.0	45.9	17.1	6.0	17.6	13.4
<b>MANUFACTURE OF BEVERAGES</b>	<b>6.090</b>	<b>-6.1</b>	<b>-5.9</b>	<b>-5.2</b>	<b>-3.6</b>	<b>-4.3</b>	<b>-4.9</b>	<b>-5.3</b>	<b>-0.3</b>	<b>-0.9</b>	<b>0.1</b>	<b>0.2</b>	<b>-0.1</b>	<b>-0.7</b>
Manufacture of Soft Drinks, Production of Mineral waters and Other bottled waters	6.090	-6.1	-5.9	-5.2	-3.6	-4.3	-4.9	-5.3	-0.3	-0.9	0.1	0.2	-0.1	-0.7
<b>MANUFACTURE OF TOBACCO PRODUCTS</b>	<b>14.756</b>	<b>2.7</b>	<b>4.1</b>	<b>4.8</b>	<b>6.5</b>	<b>5.9</b>	<b>6.8</b>	<b>6.4</b>	<b>6.4</b>	<b>5.8</b>	<b>6.8</b>	<b>6.9</b>	<b>2.7</b>	<b>2.2</b>
Manufacture of Tobacco Products	14.756	2.7	4.1	4.8	6.5	5.9	6.8	6.4	6.4	5.8	6.8	6.9	2.7	2.2
<b>MANUFACTURE OF LEATHER &amp; RELATED PRODUCTS</b>	<b>11.844</b>	<b>-19.7</b>	<b>-12.6</b>	<b>-16.4</b>	<b>-27.6</b>	<b>-6.6</b>	<b>-13.2</b>	<b>-13.8</b>	<b>-10.4</b>	<b>-10.9</b>	<b>-10.1</b>	<b>-10.0</b>	<b>-8.7</b>	<b>1.8</b>
Tanning and dressing of leather; dressing and dyeing of fur	11.844	-19.7	-12.6	-16.4	-27.6	-6.6	-13.2	-13.8	-10.4	-10.9	-10.1	-10.0	-8.7	1.8
<b>MANUFACTURE OF PAPER &amp; PAPER PRODUCTS</b>	<b>3.724</b>	<b>-2.0</b>	<b>-0.6</b>	<b>-2.2</b>	<b>-0.7</b>	<b>-3.4</b>	<b>-10.8</b>	<b>-10.3</b>	<b>-8.0</b>	<b>-10.0</b>	<b>-6.6</b>	<b>-5.4</b>	<b>-5.0</b>	<b>-10.4</b>
Manufacture of pulp, Paper & Paperboard	3.724	-2.0	-0.6	-2.2	-0.7	-3.4	-10.8	-10.3	-8.0	-10.0	-6.6	-5.4	-5.0	-10.4
<b>MANUFACTURE OF CHEMICALS &amp; CHEMICAL PRODUCTS</b>	<b>7.947</b>	<b>-13.7</b>	<b>-14.1</b>	<b>-13.5</b>	<b>-12.0</b>	<b>-12.5</b>	<b>-1.4</b>	<b>-1.8</b>	<b>-1.9</b>	<b>0.9</b>	<b>2.5</b>	<b>3.8</b>	<b>3.5</b>	<b>4.3</b>
Manufacture of Soap, Detergents, cleaning and Polishing preparations	7.947	-13.7	-14.1	-13.5	-12.0	-12.5	-1.4	-1.8	-1.9	0.9	2.5	3.8	3.5	4.3

**Table3b; Continued**

Industry Group	Weight	Dec-19	Jan-20	Feb-20	Mar-20	Apr-20	May-20	Jun-20	Jul-20	Aug-20	Sep-20	Oct-20	Nov-20	Dec-20
<b>MANUFACTURE OF PHARMACEUTICALS, MEDICINAL CHEMICAL &amp; BOTANICAL PRODUCTS</b>	<b>2.919</b>	<b>-22.4</b>	<b>-22.1</b>	<b>-21.6</b>	<b>-20.2</b>	<b>-20.6</b>	<b>-21.1</b>	<b>-21.5</b>	<b>-21.5</b>	<b>-22.0</b>	<b>-21.2</b>	<b>-21.1</b>	<b>-2.0</b>	<b>-0.3</b>
Manufacture of Pharmaceuticals, medicinal chemical and botanical products	2.919	-22.4	-22.1	-21.6	-20.2	-20.6	-21.1	-21.5	-21.5	-22.0	-21.2	-21.1	-2.0	-0.3
<b>MANUFACTURE OF RUBBER &amp; PLASTIC PRODUCTS</b>	<b>3.508</b>	<b>-7.0</b>	<b>-6.9</b>	<b>-7.0</b>	<b>-6.0</b>	<b>-5.9</b>	<b>-7.9</b>	<b>-8.2</b>	<b>-8.3</b>	<b>-8.5</b>	<b>-8.2</b>	<b>-8.1</b>	<b>0.1</b>	<b>-0.1</b>
Manufacture of Plastic products	3.508	-7.0	-6.9	-7.0	-6.0	-5.9	-7.9	-8.2	-8.3	-8.5	-8.2	-8.1	0.1	-0.1
<b>MANUFACTURE OF OTHER NON-METALLIC MINERAL PRODUCTS</b>	<b>24.844</b>	<b>-1.0</b>	<b>-0.6</b>	<b>0.1</b>	<b>1.8</b>	<b>1.3</b>	<b>0.7</b>	<b>0.2</b>	<b>8.5</b>	<b>7.9</b>	<b>8.9</b>	<b>9.0</b>	<b>8.7</b>	<b>8.0</b>
Manufacture of Cement, Lime and Plaster	24.844	-1.0	-0.6	0.1	1.8	1.3	0.7	0.2	8.5	7.9	8.9	9.0	8.7	8.0

**Source: UBOS**



**Table3c: Monthly Changes in Producer Price Index - Manufacturing (Export Market), December 2019 to December 2020**

Base period: July 2009 to June 2010=100

Industry Group	Weight	Dec-19	Jan-20	Feb-20	Mar-20	Apr-20	May-20	Jun-20	Jul-20	Aug-20	Sep-20	Oct-20	Nov-20	Dec-20
<b>PPI-M EXPORT</b>	<b>182.802</b>	<b>4.7</b>	<b>2.7</b>	<b>-1.2</b>	<b>5.9</b>	<b>-3.9</b>	<b>-1.0</b>	<b>-4.4</b>	<b>1.2</b>	<b>-1.9</b>	<b>2.5</b>	<b>-0.5</b>	<b>-3.5</b>	<b>3.1</b>
<b>MANUFACTURE OF FOOD PRODUCTS</b>	<b>107.169</b>	<b>6.2</b>	<b>3.4</b>	<b>-1.3</b>	<b>6.9</b>	<b>-5.0</b>	<b>-0.8</b>	<b>-5.3</b>	<b>1.9</b>	<b>-2.2</b>	<b>3.2</b>	<b>-0.8</b>	<b>-4.6</b>	<b>4.1</b>
MANUFACTURE OF BEVERAGES	6.090	-0.6	-0.1	-0.1	2.6	0.1	0.2	-1.4	-0.9	-0.7	0.5	0.7	-0.2	-1.2
MANUFACTURE OF TOBACCO PRODUCTS	14.756	-0.6	1.1	-0.1	2.5	0.3	1.6	-1.3	-0.9	-0.7	0.5	0.6	-0.2	-1.1
MANUFACTURE OF LEATHER & RELATED PRODUCTS	11.844	-2.2	0.1	-0.1	2.6	0.3	-7.4	-1.4	-0.9	-0.7	0.5	0.7	-0.2	9.0
MANUFACTURE OF PAPER & PAPER PRODUCTS	3.724	4.6	1.1	-1.7	2.9	-1.5	-6.6	-0.8	-2.2	-0.6	-0.4	0.7	-0.2	-1.3
MANUFACTURE OF CHEMICALS & CHEMICAL PRODUCTS	7.947	-1.1	-0.8	-0.1	2.6	0.3	3.6	-1.4	-0.9	-0.7	0.5	1.8	-0.2	-0.4
MANUFACTURE OF PHARMACEUTICALS, MEDICINAL CHEMICAL & BOTANICAL PRODUCTS	2.919	-2.9	0.1	-0.1	2.6	0.3	0.2	-1.4	-0.9	-0.7	0.5	0.7	-0.2	-1.2
MANUFACTURE OF RUBBER & PLASTIC PRODUCTS	3.508	-0.2	0.0	0.0	1.0	0.1	0.1	-0.6	-0.4	-0.3	0.2	0.3	-0.1	-0.5
MANUFACTURE OF OTHER NON-METALLIC MINERAL PRODUCTS	24.844	-0.6	0.1	-0.1	2.6	0.3	0.2	-1.4	7.3	-0.7	0.5	0.7	-0.2	-1.2
<b>MANUFACTURE OF FOOD PRODUCTS</b>	<b>107.169</b>	<b>6.2</b>	<b>3.4</b>	<b>-1.3</b>	<b>6.9</b>	<b>-5.0</b>	<b>-0.8</b>	<b>-5.3</b>	<b>1.9</b>	<b>-2.2</b>	<b>3.2</b>	<b>-0.8</b>	<b>-4.6</b>	<b>4.1</b>
Processing & Preserving of Fish, Crustaceans and Molluscs	19.899	-0.3	23.8	4.3	3.2	-21.6	1.3	-1.2	13.7	-8.0	11.4	2.7	-11.5	-3.4
Manufacture of Vegetable and Animal Oils and Fats	21.466	2.5	0.2	0.9	13.3	2.3	6.6	-5.9	-0.9	3.1	0.3	1.7	-0.2	2.6
Manufacture of Sugar	15.058	6.3	1.7	-0.1	2.6	0.3	0.2	-1.4	-0.9	-0.7	-5.1	-10.3	-0.2	11.9
Coffee Processing	33.812	11.9	-5.4	-9.6	6.9	2.3	-12.2	-11.5	-6.2	-8.3	6.0	-12.2	-8.1	27.9
Tea Processing	16.934	-2.3	-0.4	-7.2	-9.2	23.4	-0.7	-2.3	5.1	9.1	3.1	-0.8	2.2	-5.8
<b>MANUFACTURE OF BEVERAGES</b>	<b>6.090</b>	<b>-0.6</b>	<b>-0.1</b>	<b>-0.1</b>	<b>2.6</b>	<b>0.1</b>	<b>0.2</b>	<b>-1.4</b>	<b>-0.9</b>	<b>-0.7</b>	<b>0.5</b>	<b>0.7</b>	<b>-0.2</b>	<b>-1.2</b>
Manufacture of Soft Drinks, Production of Mineral waters and Other bottled waters	6.090	-0.6	-0.1	-0.1	2.6	0.1	0.2	-1.4	-0.9	-0.7	0.5	0.7	-0.2	-1.2
<b>MANUFACTURE OF TOBACCO PRODUCTS</b>	<b>14.756</b>	<b>-0.6</b>	<b>1.1</b>	<b>-0.1</b>	<b>2.5</b>	<b>0.3</b>	<b>1.6</b>	<b>-1.3</b>	<b>-0.9</b>	<b>-0.7</b>	<b>0.5</b>	<b>0.6</b>	<b>-0.2</b>	<b>-1.1</b>
Manufacture of Tobacco Products	14.756	-0.6	1.1	-0.1	2.5	0.3	1.6	-1.3	-0.9	-0.7	0.5	0.6	-0.2	-1.1
<b>MANUFACTURE OF LEATHER &amp; RELATED PRODUCTS</b>	<b>11.844</b>	<b>-2.2</b>	<b>0.1</b>	<b>-0.1</b>	<b>2.6</b>	<b>0.3</b>	<b>-7.4</b>	<b>-1.4</b>	<b>-0.9</b>	<b>-0.7</b>	<b>0.5</b>	<b>0.7</b>	<b>-0.2</b>	<b>9.0</b>
Tanning and dressing of leather; dressing and dyeing of fur	11.844	-2.2	0.1	-0.1	2.6	0.3	-7.4	-1.4	-0.9	-0.7	0.5	0.7	-0.2	9.0
<b>MANUFACTURE OF PAPER &amp; PAPER PRODUCTS</b>	<b>3.724</b>	<b>4.6</b>	<b>1.1</b>	<b>-1.7</b>	<b>2.9</b>	<b>-1.5</b>	<b>-6.6</b>	<b>-0.8</b>	<b>-2.2</b>	<b>-0.6</b>	<b>-0.4</b>	<b>0.7</b>	<b>-0.2</b>	<b>-1.3</b>
Manufacture of pulp, Paper & Paperboard	3.724	4.6	1.1	-1.7	2.9	-1.5	-6.6	-0.8	-2.2	-0.6	-0.4	0.7	-0.2	-1.3
<b>MANUFACTURE OF CHEMICALS &amp; CHEMICAL PRODUCTS</b>	<b>7.947</b>	<b>-1.1</b>	<b>-0.8</b>	<b>-0.1</b>	<b>2.6</b>	<b>0.3</b>	<b>3.6</b>	<b>-1.4</b>	<b>-0.9</b>	<b>-0.7</b>	<b>0.5</b>	<b>1.8</b>	<b>-0.2</b>	<b>-0.4</b>
Manufacture of Soap, Detergents, cleaning and Polishing preparations	7.947	-1.1	-0.8	-0.1	2.6	0.3	3.6	-1.4	-0.9	-0.7	0.5	1.8	-0.2	-0.4

**Table3c; Continued**

Industry Group	Weight	Dec-19	Jan-20	Feb-20	Mar-20	Apr-20	May-20	Jun-20	Jul-20	Aug-20	Sep-20	Oct-20	Nov-20	Dec-20
<b>MANUFACTURE OF PHARMACEUTICALS, MEDICINAL CHEMICAL &amp; BOTANICAL PRODUCTS</b>	<b>2.919</b>	<b>-2.9</b>	<b>0.1</b>	<b>-0.1</b>	<b>2.6</b>	<b>0.3</b>	<b>0.2</b>	<b>-1.4</b>	<b>-0.9</b>	<b>-0.7</b>	<b>0.5</b>	<b>0.7</b>	<b>-0.2</b>	<b>-1.2</b>
Manufacture of Pharmaceuticals, medicinal chemical and botanical products	2.919	-2.9	0.1	-0.1	2.6	0.3	0.2	-1.4	-0.9	-0.7	0.5	0.7	-0.2	-1.2
<b>MANUFACTURE OF RUBBER &amp; PLASTIC PRODUCTS</b>	<b>3.508</b>	<b>-0.2</b>	<b>0.0</b>	<b>0.0</b>	<b>1.0</b>	<b>0.1</b>	<b>0.1</b>	<b>-0.6</b>	<b>-0.4</b>	<b>-0.3</b>	<b>0.2</b>	<b>0.3</b>	<b>-0.1</b>	<b>-0.5</b>
Manufacture of Plastic products	3.508	-0.2	0.0	0.0	1.0	0.1	0.1	-0.6	-0.4	-0.3	0.2	0.3	-0.1	-0.5
<b>MANUFACTURE OF OTHER NON-METALLIC MINERAL PRODUCTS</b>	<b>24.844</b>	<b>-0.6</b>	<b>0.1</b>	<b>-0.1</b>	<b>2.6</b>	<b>0.3</b>	<b>0.2</b>	<b>-1.4</b>	<b>7.3</b>	<b>-0.7</b>	<b>0.5</b>	<b>0.7</b>	<b>-0.2</b>	<b>-1.2</b>
Manufacture of Cement, Lime and Plaster	24.844	-0.6	0.1	-0.1	2.6	0.3	0.2	-1.4	7.3	-0.7	0.5	0.7	-0.2	-1.2

**Source: UBOS**