



# UGANDA BUREAU OF STATISTICS

P.O. Box 7186, Kampala; Tel: 0414-706000; Fax: 0414-237553; Email: ubos@ubos.org; Website: www.ubos.org



## PRESS RELEASE

### PRODUCER PRICE INDEX AGRICULTURE - UP-TO DECEMBER 2021

#### HIGHLIGHTS

##### 1.1 Annual Inflation

The inflation rate measured by the Producer Price Index Agriculture (PPI-A) for the 12 months to December 2021 (covering prices for Crops, Animals, Fisheries and Forestry products) increased to 9.7 percent up from 7.5 percent rise recorded in November 2021.

This follows two successive annual increases of 8.0 percent and 7.8 percent recorded for the year ended September and October 2021 respectively, Table 1.

Table 1: Overall PPI-A and Inflation Dec 2020 - Dec 2021

Month	PPI-A	Annual Inflation
Dec-21	112.9	9.7
Nov-21	110.1	7.5
Oct-21	109.8	7.8
Sep-21	112.1	8.0
Aug-21	113.0	8.9
Jul-21	108.4	7.3
Jun-21	106.4	7.5
May-21	107.6	6.4
Apr-21	106.9	5.7
Mar-21	105.5	3.6
Feb-21	105.0	-0.8
Jan-21	102.4	-3.2
Dec-20	103.0	-2.4

Chris.N.Mukiza(PhD)  
EXECUTIVE DIRECTOR

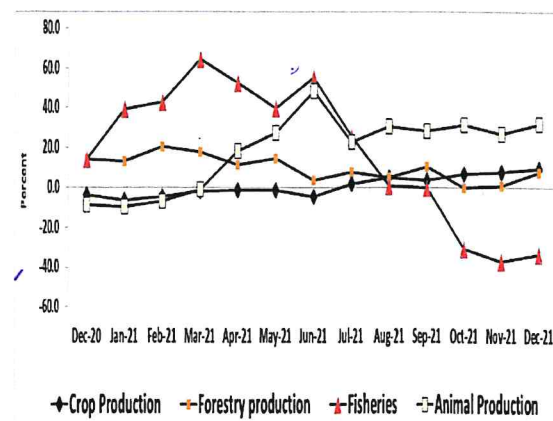
The main contributors to the annual increase in December 2021 were;

- An increase of 32.1% in average price of animal products.
- An increase of 9.6% in average price of Crop products.
- An increase of 7.8 % in average price of Forestry products

However, an annual decline of 33.2 % in average price of Fish was recorded in the year ended December 2021 compared to that of 36.8% in November 2021, Figure 1 and Table 3.

The pattern of annual changes by divisions of the index up to December 2021 is presented in Figure 1 below.

Fig 1: Annual Inflation by Division



##### 1.2 Quarter-on-Quarter Inflation

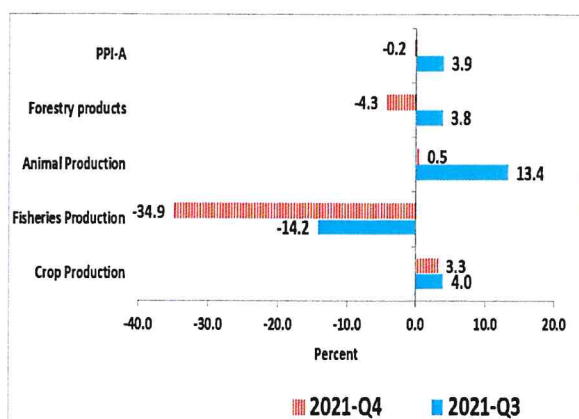
The section below presents price developments during quarter four compared to quarter three of

2021. In quarter four of 2021, the prices for Fish and Forestry products decreased resulting into downward quarterly headline inflation of 0.2 percent compared to an increase of 3.9 percent recorded in the quarter three of 2021.

The average price for animal production increased by 0.5 percent due to rising demand. There were price increases for cattle (2.9%), Raw milk (10.1%) and Poultry (5.9%) as shown in Table 3.

Also noticeable during the 2021 quarter 4 was the increase of 3.3 percent in average price of most crops caused by seasonal effects. Notable increase was recorded in the prices of; Cereals (16.3%), Oil seeds (8.4%), Root tubers (2.6%), Tobacco (59.6%), Bananas and Plantains (17.9%), Tropical Fruits (12.8%), see table 3.

**Fig: 2 Quarterly PPI-A Inflation by Division Q3 to Q4**



However, some groups of crop registered price decline as follows; the Rice(9.7%), Citrus Fruits (13.4%), leafy vegetables (9.1%), Leguminous crops(13.6%) and Fruit Vegetables(9.8%) shown in Table 3.

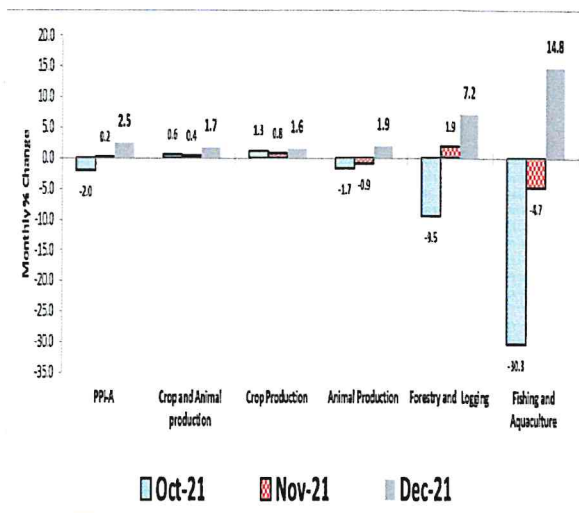
Similarly, the average Prices for Forestry products and Fish decreased by 4.3 percent and 33.2 percent respectively in quarter 4 of 2021, Figure 2.

## 2.1 Monthly Inflation

The monthly PPI-A increased by 2.5 percent in December 2021 after a rise of 0.2 in November 2021.

The increase was mainly due to increase in prices for; animals (1.9%), Crops (1.7%) and Fish (14.8%) as shown in Fig 2.1

**Fig 2.1: Monthly PPI-A Inflation Oct - Dec 2021.**



The monthly changes indicate that the average price for crops production increased by 1.7 percent in December 2021 after two successive increases of 0.6% and 0.4% in October and November 2021 respectively as shown in (Fig 2). The detailed monthly average price change by group of crops is

presented in Table 1. The general increase in the prices of most group items is attributed to seasonal factors that caused intermittent supplies. In December 2021, while the general experience was rising prices for crops, notable decreases were registered in the prices of Leguminous crops (0.6%), Oil seeds(3.9%), Tropical fruits(3.1%) and Root tubers (2.2%).

In the case of animal products, the index for Animal Production increased by 1.9 percent in December 2021 after the decreases of 0.9% in November 2021. Most animal products registered higher average prices in September 2021 including raw milk(9.6%), Egg production (2.0%), Swine(5.1%), poultry(9.6%) and Cattle(4.7), see Table 2.

**Table 2: Monthly Change in Group Price Indices October - December 2021**

Division/Group		Oct-21	Nov-21	Dec-21
<b>Crop and Animal Production</b>		0.6	0.4	1.7
<b>Crop Production</b>		1.3	0.8	1.6
01	Growing of cereals	7.3	8.9	0.4
02	Growing of Leguminous crop	-10.4	-3.4	-0.6
03	Growing of oil seeds	12.7	-1.4	-3.9
04	Growing rice	-9.8	1.9	6.0
05	Growing leafy or stem vegetables	2.6	-9.9	-3.5
06	Growing of fruit bearing vegetables	-6.5	2.1	10.8
07	Growing of root or tuberous vegetables	13.4	-7.6	13.5
08	Growing of roots tubers	3.7	-0.6	-2.2
09	Growing sugarcane	0.0	0.0	0.0
10	Growing tobacco	50.0	-20.0	7.4
11	Growing of fibre crops	178.2	0.0	2.6
12	Growing of tropical fruits and subtropical fruits	0.9	5.0	-3.1
13	Banana and plantain	-4.6	5.7	3.6
14	Growing of citrus fruits	-14.9	4.1	26.6
15	Growing of beverage crops	-8.2	-2.7	13.2
<b>Animal Production</b>		-1.7	-0.9	1.9
16	Raising of Cattle	-3.9	-2.4	4.7
17	Production of raw milk	-4.3	-3.5	9.6
18	Raising of sheep and goats	-3.1	-0.2	-5.9
19	Raising of swine/pigs	-2.4	-1.2	5.1
20	Raising of poultry	4.9	1.7	2.5
21	Production of eggs	9.3	-1.4	-1.9
22	Raising of other animals (honey & rabbits)	19.1	2.7	-1.0
23	Bee keeping and production of honey and beeswax	21.1	1.4	-3.7
<b>Forestry and Logging products</b>		-9.5	1.9	7.2
24	Logging	-9.5	1.9	7.2
<b>Fresh and Aquaculture fisheries</b>		-30.3	-4.7	14.8
25	Fresh water Fishing	-30.1	-5.8	15.8
26	Fresh water Aquaculture	-35.3	29.1	-8.2
<b>PPI-A</b>		-2.0	0.2	2.5

**Table 3 Quarter-on-Quarter Change in PPI-A by Groups 2020 Q1 - 2021 Q4**

Division/Group		2020				2021			
		Q1	Q2	Q3	Q4	Q1	Q2	Q3	Q4
<b>Crop and Animal Production Division</b>		<b>0.5</b>	<b>-4.2</b>	<b>1.2</b>	<b>-1.0</b>	<b>-0.6</b>	<b>3.8</b>	<b>5.8</b>	<b>3.0</b>
<b>Crop Production</b>		<b>2.0</b>	<b>-2.2</b>	<b>-1.8</b>	<b>-1.2</b>	<b>0.8</b>	<b>-0.1</b>	<b>4.0</b>	<b>3.3</b>
01	Growing of cereals (Except rice)	-2.0	19.2	-18.7	-4.7	-14.6	18.9	14.1	16.3
02	Growing of Legumious crop	1.0	8.6	-3.7	-11.7	3.7	-4.7	-4.7	-13.6
03	Growing of oil seeds	1.6	-0.7	2.1	5.6	17.2	8.0	-2.1	8.4
04	Growing rice	-2.8	17.0	-14.4	-1.6	-9.3	11.7	-7.1	-9.7
05	Growing leafy or stem vegetables	30.3	-12.4	-5.4	-2.2	41.5	-39.9	43.0	-9.1
06	Growing of fruit bearing vegetables	22.4	-17.6	-8.7	-5.8	31.2	-13.1	0.0	-9.8
07	Growing of root, bulb or tuberous vegetables	3.2	-14.2	29.7	-12.2	32.5	-17.9	-5.7	26.1
08	Growing of root tubers	8.3	-9.2	6.9	-0.6	-15.1	-1.1	2.6	2.6
09	Growing sugarcane	-9.1	0.0	-10.4	0.0	0.0	0.0	-5.7	0.0
10	Growing tobacco	13.3	37.0	-22.7	-14.6	-8.4	-49.1	28.2	59.6
11	Growing of fibre crops	1.6	-21.5	7.0	16.2	-36.1	-1.3	8.7	188.3
12	Growing of tropical fruits and subtropical fruits	-8.3	-16.3	7.0	10.3	-10.3	-1.2	11.9	12.8
13	Banana and plantain	-9.1	-14.9	4.7	10.8	-11.7	0.0	3.0	17.8
14	Growing of citrus fruits	42.0	-9.0	-4.3	-17.5	68.3	-1.8	-36.8	-13.4
15	Growing of beverage crops	-2.0	-2.8	6.0	-0.3	2.9	5.0	4.9	-5.7
16	Growing of Spices, Aromatic crops	-33.8	4.9	0.5	-0.3	-50.0	4.7	0.5	-0.3
<b>Animal Production</b>		<b>-8.0</b>	<b>-9.6</b>	<b>14.9</b>	<b>-1.0</b>	<b>-7.6</b>	<b>22.5</b>	<b>13.4</b>	<b>0.5</b>
17	Raising of cattle	-3.4	-14.9	16.5	-0.6	-4.0	20.3	9.6	2.9
18	Production of raw milk	5.8	-30.6	24.8	3.3	-0.8	17.2	7.7	10.1
19	Raising of sheep and goats	-12.4	-18.1	18.2	3.9	-11.7	40.6	15.5	-3.9
20	Raising of swine/pigs	-3.6	-5.7	29.1	-5.3	-2.5	-0.2	10.8	1.9
21	Raising of poultry	-6.0	-10.7	2.2	2.0	-14.7	37.7	17.9	5.9
22	Production of eggs	-4.5	6.2	-0.3	-1.5	5.8	23.4	14.2	0.2
23	Raising of other animals (Honey pdn & Rabbits)	-4.8	-15.6	-30.8	-3.6	37.2	-4.5	1.8	19.9
<b>Forestry and Logging products</b>		<b>3.9</b>	<b>2.7</b>	<b>5.6</b>	<b>0.2</b>	<b>7.9</b>	<b>-4.0</b>	<b>3.8</b>	<b>-4.3</b>
24	Logging	3.9	2.7	5.6	0.2	7.9	-4.0	3.8	-4.3
<b>Fresh and Aquaculture Fisheries</b>		<b>-11.1</b>	<b>-5.3</b>	<b>17.5</b>	<b>6.6</b>	<b>25.4</b>	<b>-5.1</b>	<b>-14.2</b>	<b>-34.9</b>
25	Fresh water Fisheries	-11.3	-5.4	18.3	6.6	25.7	-5.4	-14.8	-35.4
26	Fresh water Aquaculture Fisheries	-5.6	-3.7	-13.0	9.9	7.2	16.2	17.2	-18.4
<b>PPI-A</b>		<b>-0.2</b>	<b>-3.9</b>	<b>2.5</b>	<b>-0.4</b>	<b>1.8</b>	<b>2.6</b>	<b>3.9</b>	<b>-0.2</b>

Table 4: Annual Change in the PPI-A, January 2019 – December 2021

Division	PPI-A	Crop and Animal production	Crop Production	Animal Production	Forestry and Logging	Fishing and Aquaculture
<b>Weights</b>	1000.0000	882.0013	727.8881	154.1132	37.2748	80.7238
2017/18	1.5	0.9	-0.9	9.4	22.3	-2.1
2018/19	-0.8	-0.5	-0.7	0.6	8.8	-10.3
2019/20	3.5	4.6	5.6	0.3	-2.6	-5.2
2020/21	-0.1	-2.9	-4.1	2.5	12.6	29.7
2021/22*	6.6	9.8	5.7	26.7	2.3	-23.0
2017						
2018	-4.3	-4.9	-7.0	4.2	8.7	-5.2
2019	6.9	8.9	11.2	-0.5	2.0	-12.6
2020	-2.5	-3.5	-3.4	-4.1	4.5	6.2
2021	5.6	4.7	1.1	20.4	9.2	15.4
Jan-19	-2.4	-3.1	-2.6	-5.2	14.6	-3.7
Feb-19	0.0	0.5	2.1	-6.4	5.3	-8.3
Mar-19	1.4	2.6	5.3	-9.2	5.7	-14.8
Apr-19	5.3	7.5	9.9	-2.9	5.7	-19.4
May-19	10.6	13.5	17.5	-2.7	5.9	-18.7
Jun-19	11.6	15.6	19.7	0.3	6.1	-26.3
Jul-19	12.5	16.0	19.8	1.8	4.3	-21.6
Aug-19	10.1	13.6	17.0	1.0	-4.1	-19.0
Sep-19	10.7	13.8	15.9	5.8	-3.7	-13.9
Oct-19	5.6	6.9	8.7	-0.2	-4.5	-2.3
Nov-19	8.2	9.6	11.9	0.8	-3.8	0.9
Dec-19	9.5	11.6	12.0	9.9	-6.1	-3.4
Jan-20	7.6	9.3	9.0	10.3	-2.9	-5.8
Feb-20	5.7	6.7	5.6	11.6	-3.0	-0.6
Mar-20	-1.0	-1.1	-2.0	3.4	-3.0	1.4
Apr-20	-4.7	-5.4	-4.3	-10.5	-3.7	4.9
May-20	-8.3	-9.3	-8.8	-11.8	-4.4	4.3
Jun-20	-9.0	-10.2	-8.7	-17.1	3.6	-1.3
Jul-20	-5.8	-8.4	-8.9	-6.3	5.5	28.5
Aug-20	-2.6	-4.9	-4.9	-4.8	14.1	20.7
Sep-20	-3.9	-5.7	-5.9	-4.8	12.6	9.8
Oct-20	-1.5	-2.4	-1.7	-5.0	11.8	1.5
Nov-20	-2.7	-3.7	-4.0	-2.7	12.7	0.7
Dec-20	-2.4	-4.6	-3.6	-8.4	14.0	14.3
Jan-21	-3.2	-7.0	-6.5	-9.6	13.3	39.2
Feb-21	-0.8	-5.1	-4.7	-7.0	20.6	43.0
Mar-21	3.6	-1.6	-1.8	-1.1	17.9	64.4
Apr-21	5.7	2.0	-1.2	18.5	11.3	52.7
May-21	6.4	3.6	-1.2	27.3	14.6	39.9
Jun-21	7.5	4.5	-4.4	48.5	3.5	55.3
Jul-21	7.3	5.7	1.8	22.8	7.7	25.8
Aug-21	8.9	9.8	4.9	30.6	5.2	0.8
Sep-21	8.0	8.5	3.7	28.3	10.4	0.2
Oct-21	7.8	11.5	6.8	31.4	-0.1	-30.5
Nov-21	7.5	11.7	8.0	27.1	0.9	-36.8
Dec-21	9.7	13.9	9.6	32.1	7.8	-33.2