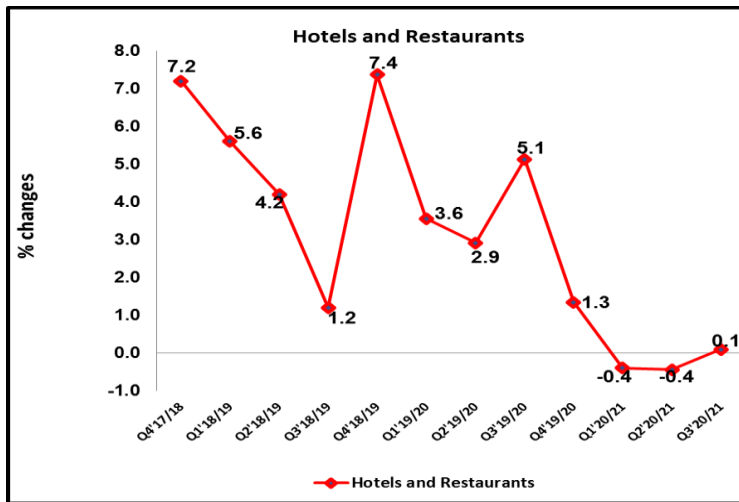


HIGHLIGHTS

Annual Producer Price Indices increased by 0.1%

The annual Producer prices for Hotels and Restaurants Services increased by 0.1 percent for the year ending Quarter three FY2020/21 compared to the 5.1 percent increase recorded in the year ended Quarter three FY2019/20.

Fig 1: Annual Average Percentage Price Changes

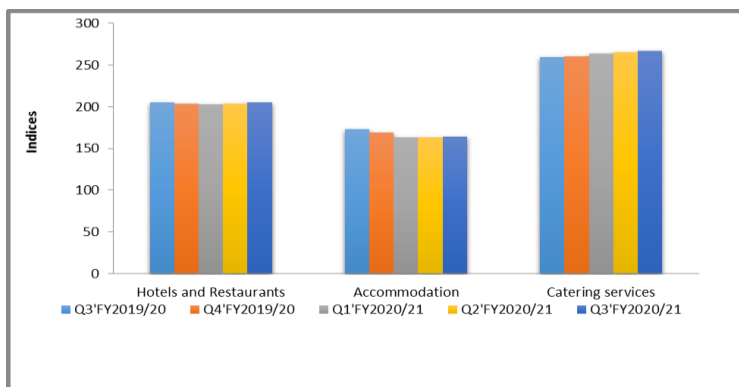


The Main Contributor to the 0.1 Percentage increase was:

- An increase of 2.6% in prices of Catering services with PPI prices of Food and Snacks increasing by 0.8%
- During the same period, prices of Drinks increased by 5.7% mainly attributed to an increase of 25.6% in the prices of Wines and Spirits.

Quarterly Producer Price Indices

Fig 2. Quarterly Indices from Q3' FY2019/20 to Q3' FY2020/21



Quarter to Quarter Changes

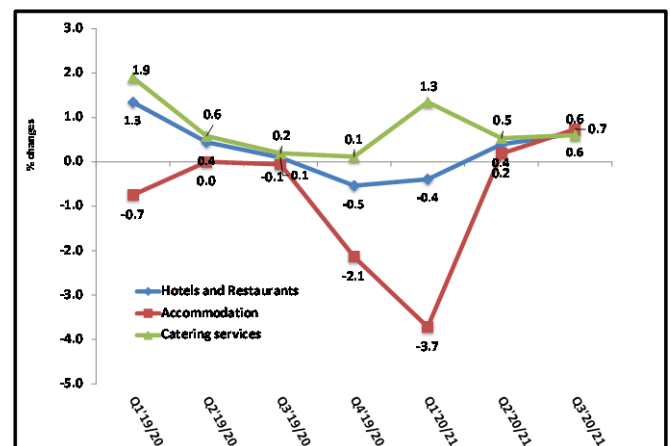
Producer prices for the Hotel and Restaurants Services increased by 0.6 percent in the third Quarter of FY2020/21 compared to an increase of 0.4 percent reported in Quarter Two FY2020/21.

The increase recorded in Quarter Three FY2020/21 was mainly due to an increase in Catering Services and Accommodation with 0.6% and 0.7% respectively.

Also to note, is the high increase in the prices of Wines and spirits with 4.7% in Quarter three. This was attributed to the increase in the prices of spirits at factory gate hence also at wholesale points.

Figure 3 below shows the trend of the overall prices for Hotels & Restaurants Sector and sub-sectors between the First Quarter of FY2019/20 and the Third Quarter of FY2020/21.

Fig 3. Quarterly Average Percentage Price Changes




Imelda Atai Musana (PhD)
For EXECUTIVE DIRECTOR
 Friday 14th May 2021

For more information contact
 Peter Opio
 Director Business & Industry

Tel: 041-237550/371945/0414706017/15 Fax: 041-237553
 Email: ubos@ubos.org
 Website: www.ubos.org

Statistics House
 Plot 9, Colville Street, P.O. Box 7186, Kampala

Table 1: Summary of Producer Price Indices for Hotels and Restaurants (PPI-H&R) from Q3 FY 2019/20 to Q3 FY 2020/21

Producer Price Index-Hotels & Restaurants Base Period=2008	Weights	FY 2019/20		FY 2020/21		
		Quarter 3	Quarter4	Quarter1	Quarter2	Quarter3
Hotels & Restaurants	10000	204.9	203.8	203.0	203.8	205.1
Accommodation	3375	172.9	169.2	162.9	163.2	164.4
Catering Services	6625	259.7	260.0	263.5	264.9	266.5
Accommodation	3375	172.9	169.2	162.9	163.2	164.4
Hotel Accommodation (Rooms, Suites etc.)	2675	176.1	169.8	160.9	159.8	163.6
Other Hotel Services(Conference Halls)	700	188.3	189.9	188.1	191.5	187.4
Catering Services	6625	259.7	260.0	263.5	264.9	266.5
Food and Snacks	3075	281.4	281.4	283.6	282.6	283.6
Buffet	695	323.7	323.6	325.0	337.3	339.4
Ala carte(Specific foods)	1190	252.0	252.1	254.7	242.6	242.9
Snacks(light bite, coffee, tea)	1190	322.7	322.7	325.1	342.9	347.4
Drinks	3549	216.9	217.7	222.8	227.2	229.3
Beer	893	195.6	195.7	199.1	198.7	198.5
Soft drinks(Sodas, Mineral water)	1309	231.2	232.9	234.2	235.5	235.7
Wines & Sprints	1347	224.0	224.6	243.3	268.7	281.3
PPI-H&R –Percentage Change- Annual						
	Weights	Quarter3	Quarter4	Quarter1	Quarter2	Quarter3
Hotels & Restaurants	10000	5.1	1.3	-0.4	-0.4	0.1
Accommodation	3375	3.1	-2.9	-5.8	-5.7	-4.9
Catering Services	6625	6.1	2.8	2.3	2.2	2.6
Accommodation	3375	3.1	-2.9	-5.8	-5.7	-4.9
Hotel Accommodation (Rooms, Suites etc.)	2675	3.1	-4.8	-8.8	-9.5	-7.1
Other Hotel Services(Conference Halls)	700	3.3	1.2	0.2	2.0	-0.5
Catering Services	6625	6.1	2.8	2.3	2.2	2.6
Food and Snacks	3075	5.8	2.9	1.2	0.6	0.8
Buffet	695	17.2	7.5	0.5	4.2	4.9
Ala carte(Specific foods)	1190	1.0	0.9	1.6	-3.5	-3.6
Snacks(light bite, coffee, tea)	1190	0.0	0.0	0.7	6.3	7.7
Drinks	3549	6.6	3.8	4.3	5.0	5.7
Beer	893	3.2	0.6	1.9	1.6	1.5
Soft drinks(Sodas, Mineral water)	1309	11.8	7.5	4.0	2.2	1.9
Wines & Sprints	1347	2.3	2.3	10.4	20.7	25.6
PPI-H&R –Percentage Change- Quarter						
	Weights	Quarter3	Quarter4	Quarter1	Quarter2	Quarter3
Hotels & Restaurants	10000	0.1	-0.5	-0.4	0.4	0.6
Accommodation	3375	-0.1	-2.1	-3.7	0.2	0.7
Catering Services	6625	0.2	0.1	1.3	0.5	0.6
Accommodation	3375	-0.1	-2.1	-3.7	0.2	0.7
Hotel Accommodation (Rooms, Suites etc.)	2675	-0.3	-3.6	-5.2	-0.7	2.4
Other Hotel Services(Conference Halls)	700	0.3	0.8	-0.9	1.8	-2.1
Catering Services	6625	0.2	0.1	1.3	0.5	0.6
Food and Snacks	3075	0.1	0.0	0.8	-0.4	0.4
Buffet	695	0.0	0.0	0.4	3.8	0.6
Ala carte(Specific foods)	1190	0.2	0.0	1.0	-4.8	0.1
Snacks(light bite, coffee, tea)	1190	0.0	0.0	0.7	5.5	1.3
Drinks	3549	0.3	0.4	2.3	2.0	0.9
Beer	893	0.1	0.1	1.7	-0.2	-0.1
Soft drinks(Sodas, Mineral water)	1309	0.3	0.7	0.6	0.6	0.1
Wines & Sprints	1347	0.6	0.3	8.3	10.4	4.7