



# UGANDA BUREAU OF STATISTICS

P.O. Box 7186, Kampala; Tel: 0414 – 706000; Fax: 0414 – 237553; Email: ubos@ubos.org; Website: www.ubos.org



## PRESS RELEASE

### CONSUMER PRICE INDICES AND INFLATION RATES

May 2022

#### 1.1 Annual Headline Inflation

The Inflation as measured by the Consumer Price Index for Uganda for the 12 months to May 2022 increased to 6.3 percent, up from 4.9 percent registered in April 2022. This was mainly driven by the increases in the prices of commodities under; 'Food and Non-Alcoholic Beverages' (11.0 percent), 'Transport' (4.4 percent), 'Personal Care, Social Protection and Miscellaneous Goods' (3.9), 'Furnishings, Household Equipment and Routine Household' (17.3 percent), 'Alcoholic Beverages, Tobacco and Narcotics' (2.3 percent) and 'Recreation, Sport and Culture' (3.3 percent).

However, there were some decreases in the prices of commodities under; 'Restaurants and Accommodation Services' (4.3 percent) 'Education Services' (8.4 percent), 'Information and Communication' (minus 2.7 percent), Tables 1 and 2.

**Table 1. Overall CPI and Rates of Inflation (Base: 2016/17=100)**

| Month          | Overall CPI | Inflation Rate |
|----------------|-------------|----------------|
| May 2022       | 119.73      | 6.3            |
| April 2022     | 117.98      | 4.9            |
| March 2022     | 116.38      | 3.7            |
| February 2022  | 115.42      | 3.2            |
| January 2022   | 114.30      | 2.7            |
| December 2021  | 114.65      | 2.9            |
| November 2021  | 114.13      | 2.6            |
| October 2021   | 113.93      | 1.9            |
| September 2021 | 113.74      | 2.2            |
| August 2021    | 113.06      | 1.9            |
| July 2021      | 113.10      | 2.1            |
| June 2021      | 113.14      | 2.0            |
| May 2021       | 112.67      | 1.9            |

Chris N. Mukiza (PhD)

**EXECUTIVE DIRECTOR**

## 1.2 Monthly Inflation

The Monthly Headline Inflation for May 2022 increased by 1.5 percent compared to the 1.4 percent rise recorded in the month of April 2022. This is mainly attributed to the monthly Food and Non- Alcoholic Beverages Inflation that rose by 3.5 percent in May 2022 from the 3.1 percent rise recorded in April 2022.

In addition, the monthly Inflation for Transport increased by 3.0 percent in May 2022 compared to the 1.2 percent rise recorded in April 2022. 'Personal Care, Social Protection and Miscellaneous Goods' increased by 1.1 percent compared to the 0.8 percent drop recorded in April 2022. 'Furnishings, Household Equipment and Routine Household' increased by 1.1 percent compared to 2.8 percent rise recorded in April 2022 and 'Alcoholic Beverages, Tobacco and Narcotics' increased by 1.0 percent compared to 0.3 percent rise recorded in April 2022.

However, monthly 'Housing, Water, Electricity, Gas and Other Fuels' decreased by 0.2 percent in May 2022 compared to the 2.1 percent rise recorded in April 2022. Monthly 'Information and Communication' Inflation declined by 0.1 percent in the month of May 2022 the same drop recorded in April 2022, Table 2.

**Table 2: Monthly and Annual Changes in the Consumer Price Indices in May 2022**

| <b>13 COICOP Divisions</b>                               | <b>Weight</b>   | <b>Monthly % Change May 2022/April 2022</b> | <b>Annual % Change May 2022/May 2021</b> |
|--|-----------------|---|--|
| Food and Non-Alcoholic Beverages                         | 270.54          | 3.5   | 11.0                                     |
| Alcoholic Beverages, Tobacco and Narcotics               | 38.80           | 1.0   | 2.3                                      |
| Clothing and Footwear                                    | 69.77           | 0.2   | 3.1                                      |
| Housing, Water, Electricity, Gas and Other Fuels         | 104.16          | -0.2  | 4.4                                      |
| Furnishings, Household Equipment and Routine Household   | 48.37           | 1.1   | 17.3                                     |
| Health   | 47.47           | 0.2   | 2.1                                      |
| Transport  | 104.55          | 3.0   | 4.4                                      |
| Information and Communication                            | 44.32           | -0.1  | -2.7                                     |
| Recreation, Sport and Culture                            | 49.85           | 0.4   | 3.3                                      |
| Education Services                                       | 57.96           | 0.0   | 8.4                                      |
| Restaurants and Accommodation Services                   | 87.38           | 0.0   | 4.3                                      |
| Insurance and Financial Services                         | 22.80           | 0.1   | 2.8                                      |
| Personal Care, Social Protection and Miscellaneous Goods | 54.04           | 1.1   | 3.9                                      |
| <b>Overall</b>   | <b>1,000.00</b> | <b>1.5</b>                                  | <b>6.3</b>                               |

Relative to May 2021 and April 2022, the national average retail prices of selected commodities in May 2022 are shown in table 3.

**Table 3: National Average Retail Prices of Selected Commodities**

| Commodity Name              | Quantity | Unit of Measure | Average Price May 2021 | Average Price April 2022 | Average Price May 2022 |
|-----------------------------|----------|-----------------|------------------------|--------------------------|------------------------|
| Petrol                      | 1        | Litre           | 3,971                  | 5,209                    | 5,382                  |
| Diesel                      | 1        | Litre           | 3,522                  | 4,704                    | 5,376                  |
| Kerosene/Paraffin           | 1        | Litre           | 3,098                  | 3,330                    | 3,720                  |
| Maize Flour                 | 1000     | Gramme(s)       | 1,806                  | 2,275                    | 2,703                  |
| Cassava Flour               | 1000     | Gramme(s)       | 1,672                  | 1,659                    | 1,855                  |
| Sugar                       | 1        | Kg              | 3,159                  | 3,745                    | 3,752                  |
| Ordinary laundry soap small | 1        | Kg              | 3,418                  | 6,353                    | 6,631                  |
| Laundry soap big            | 1        | Kg              | 4,028                  | 7,798                    | 7,742                  |
| Refined Oil                 | 1        | Litre           | 7,344                  | 11,110                   | 11,111                 |
| Tomatoes                    | 1000     | Gramme(s)       | 2,378                  | 2,233                    | 3,263                  |
| Whole grain maize           | 1000     | Gramme(s)       | 1,371                  | 1,428                    | 1,665                  |
| Pumpkin                     | 1000     | Gramme(s)       | 1,190                  | 1,221                    | 1,363                  |
| Beans dry                   | 1000     | Gramme(s)       | 3,322                  | 3,066                    | 3,381                  |
| Groundnuts (unpounded)      | 1000     | Gramme(s)       | 5,756                  | 5,663                    | 6,086                  |
| Papaya                      | 1000     | Gramme(s)       | 1,353                  | 1,545                    | 1,626                  |
| Cooking Bananas (Matoke)    | 1000     | Gramme(s)       | 613                    | 778                      | 813                    |
| Sweet Potatoes              | 1000     | Gramme(s)       | 802                    | 967                      | 1,008                  |
| Fresh Beans                 | 1000     | Gramme(s)       | 5,114                  | 5,407                    | 5,565                  |
| Pineapple                   | 1000     | Gramme(s)       | 1,236                  | 1,387                    | 1,414                  |

### 1.3 Annual Core, Food crops & related items and EFU Inflation

The Core Inflation for the 12 months to May 2022 increased to 5.1 percent in May 2022, up from 4.3 percent registered in April 2022. This is mainly attributed to Annual Other Goods Inflation that increased to 7.8 percent for the 12 months to May 2022 up from 6.6 percent recorded in April 2022. In addition, Annual 'Services' Inflation increased to 2.0 percent for the 12 months to May 2022 up from 1.7 percent in April 2022, Table 4.

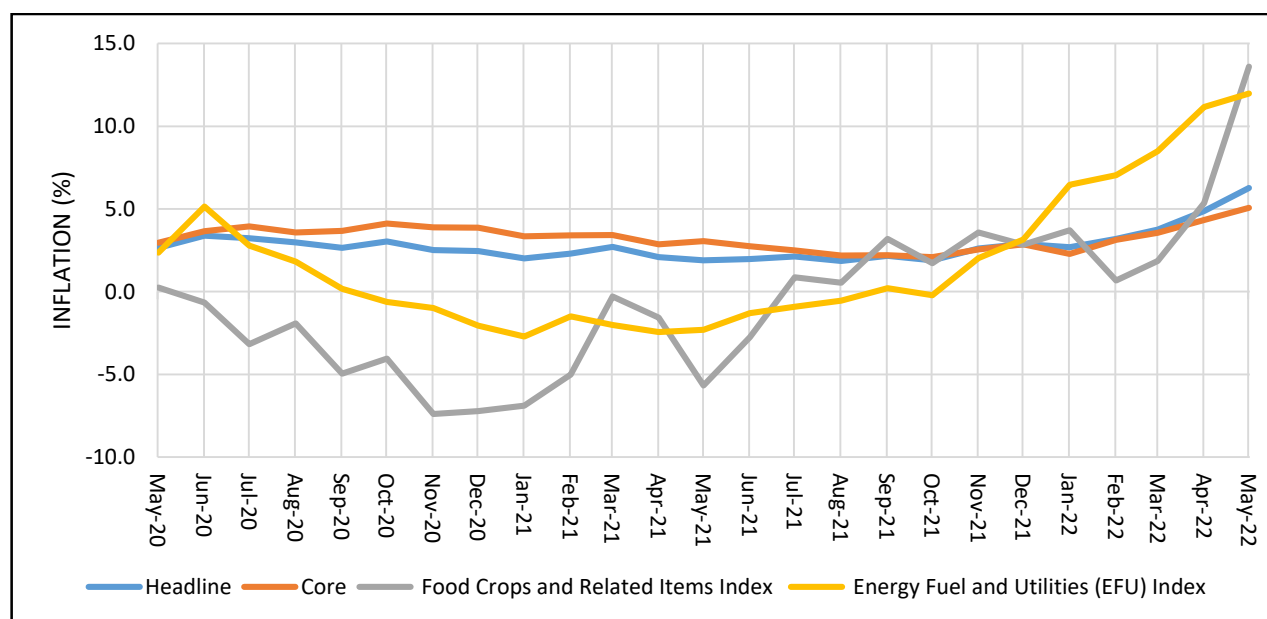
**Table 4: Annual National Core, Food crops and EFU Inflation for April 2022 and May 2022.**

| Description                            | April 2022  | May 2022    |
|--|-------------|-------------|
| <b>Headline</b>                        | <b>4.9</b>  | <b>6.3</b>  |
| <b>Core</b>                            | <b>4.3</b>  | <b>5.1</b>  |
| <i>Other Goods</i>                     | 6.6         | 7.8         |
| <i>Services</i>                        | 1.7         | 2.0         |
| <b>Food Crops and Related Items</b>    | <b>5.4</b>  | <b>13.6</b> |
| <b>Energy Fuel and Utilities (EFU)</b> | <b>11.2</b> | <b>12.0</b> |

The 'Food Crops and Related Items' Inflation for the 12 months to May 2022 increased to 13.6 percent up from 5.4 percent in April 2022. This was mainly due to Annual 'Vegetables, tubers, plantains, cooking bananas and pulses' Inflation that increased to 16.2 percent in May 2022, up from 4.5 percent registered in April 2022. Specifically, Tomatoes Inflation increased to 41.5 percent in May 2022 up from minus 16.9 percent registered in April 2022.

In addition, Annual Energy Fuel and Utilities Inflation (EFU) increased to 12.0 percent, up from 11.2 percent in April 2022. The increase in EFU Inflation was mainly due to Annual Liquid Energy Fuels Inflation that increased to 34.9 percent in May 2022, up from 30.3 percent in April 2022. Specifically, Diesel Inflation increased to 54.0 percent in May 2022 up from 38.0 percent registered in April 2022. Also, Kerosene inflation increased to 23.0 percent in May 2022 up from 9.5 percent in April 2022, Table 4 and Figure 2.

**Figure 2: Annual National Core, Food crops and EFU Inflation: May 2020– May 2022.**



### 1.4 Annual Goods Inflation

The Goods Inflation for the 12 months to May 2022 increased to 9.0 percent up from 6.9 percent recorded in April 2022. This was mainly due to Annual Inflation for Non-Durable (ND) goods that increased to 10.9 percent for the 12 months to May 2022 up from 8.2 percent recorded in April 2022. In addition, Annual Inflation for Durable (D) goods increased to 3.0 percent for the 12 months to May 2022 up from 1.7 percent in April 2022. However, Annual Semi-Durable Goods (SD) Inflation decreased to 3.7 percent in May 2022 down from 3.8 percent in April 2022, Table 5 below.

**Table 5: Annual National Goods Inflation for April 2022 and May 2022.**

| Description               | April 2022 | May 2022   |
|---------------------------|------------|------------|
| <b>Headline</b>           | <b>4.9</b> | <b>6.3</b> |
| <b>Goods</b>              | <b>6.9</b> | <b>9.0</b> |
| <i>Non-Durable (ND)</i>   | 8.2        | 10.9       |
| <i>Semi-Durables (SD)</i> | 3.8        | 3.7        |
| <i>Durables (D)</i>       | 1.7        | 3.0        |

### 1.5 Annual Headline Inflation by Income Groups and Geographical areas

Analysis by geographical areas and income groups revealed that Mbale registered the highest Inflation of 8.5 percent for the 12 months to May 2022 up from 5.7 percent recorded in April 2022. This was mainly driven by annual 'Food and Non-Alcoholic Beverages' Inflation that increased to 16.2 percent in May 2022 up from 8.0 percent registered in April 2022. In addition, annual Transport Inflation increased to 6.4 percent in May 2022, up from 1.5 percent in April 2022.

The second highest Inflation was registered in Gulu at 8.4 percent for the 12 months to May 2022 up from 6.9 percent recorded in April 2022. This was mainly driven by annual 'Food and Non-Alcoholic Beverages' Inflation that increased to 17.9 percent in May 2022, up from 7.8 percent registered in April 2022. In addition, annual 'Furnishings, Household Equipment and Routine Household' Inflation increased to 25.3 percent in May 2022, up from 23.3 percent in April 2022.

The least Annual Inflation was registered in Kampala High Income at 5.1 percent for the 12 months to May 2022 up from 4.8 percent recorded in April 2022. The low inflation was mainly driven by annual 'Restaurants and Accommodation Services' Inflation that decreased to 3.3 percent in May 2022 down from 5.2 percent registered in April 2022.

**Figure 3: Annual Inflation by Income Groups and Geographical Areas for the 12 months to April 2022 and May 2022**

