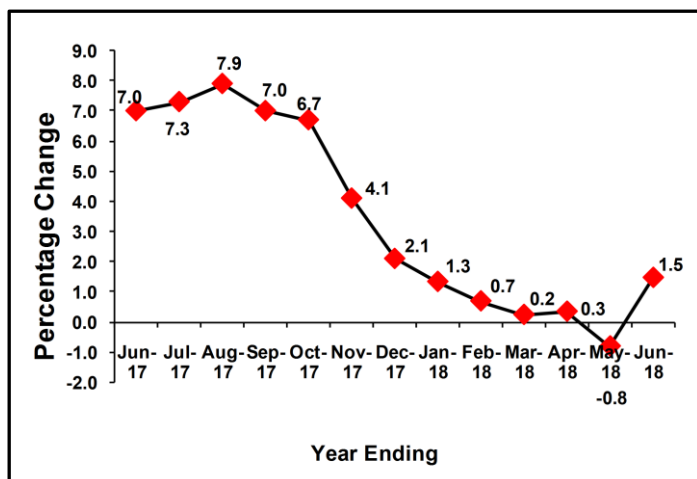


## HIGHLIGHTS

### Annual Producer Prices for Manufacturing and Utility stood at 1.5 percent

The producer prices for manufactured goods and utilities increased by 1.5% during the year ending June 2018 compared to -0.8% recorded for the year ended May 2018.

**Figure 1: Annual changes in PPI-M & U June 2017 - June 2018**



### The contributors to the 1.5 percentage change were;

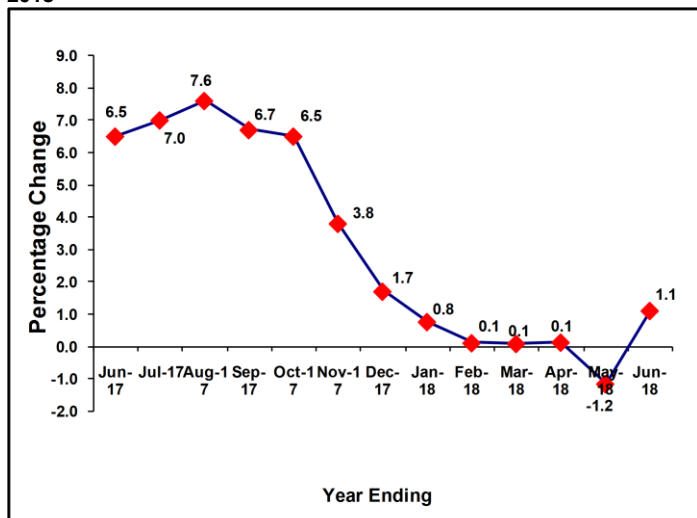
- A rise in the prices under Manufacturing sub-sector by 1.1% for the year ending June 2018 compared minus 1.2% drop registered for the year ended May 2018
- A rise of 5.5% in the prices of the Utility sub-sector for the year ending June 2018 compared to the 3.1% rise recorded for the year ended May 2018.

### Producer Price Index for Manufacturing sub-sector

#### Annual Producer Prices for manufacturing sub-sector Stood at 1.1 percent.

The Annual producer prices for manufactured goods increased by 1.1% during the year ending June 2018 compared to the drop of minus 1.2% registered for the year ended May 2018.

**Figure 2: Annual changes in PPI-Manufacturing June 2017 – June 2018**



### Main contributors to the 1.1 Percent

- A 1.9% rise in prices of Beverages in June 2018 compared to 0.8% in May 2018.
- A 5.1% increase in the prices of Chemical Products in June 2018 compared to 1.9% recorded in May 2018.
- A 3.7% rise in prices of Wearing Apparel in June 2018 compared to 3.1% in May 2018.
- A 2.4% rise in Tobacco prices in June 2018 compared to minus 0.5% recorded in May 2018.
- A 2.4% rise in prices of Pharmaceutical Products by 10.7% in June 2018 compared to 5.0% in May 2018.

### Monthly Changes in PPI-M&U

The monthly producer prices for manufactured goods and Utilities increased by 1.3% in June 2018 compared to a decline of minus 0.4% registered in May 2018.

This rise was mainly due to:

- A 1.2% increase in the prices of manufactured goods in June 2018 compared to a decline of minus 0.5% in May 2018; and
- A 1.8% rise in prices of Utilities in June 2018 compared to 0.3% recorded in May 2018.

### PPI- M & U for the Domestic Market

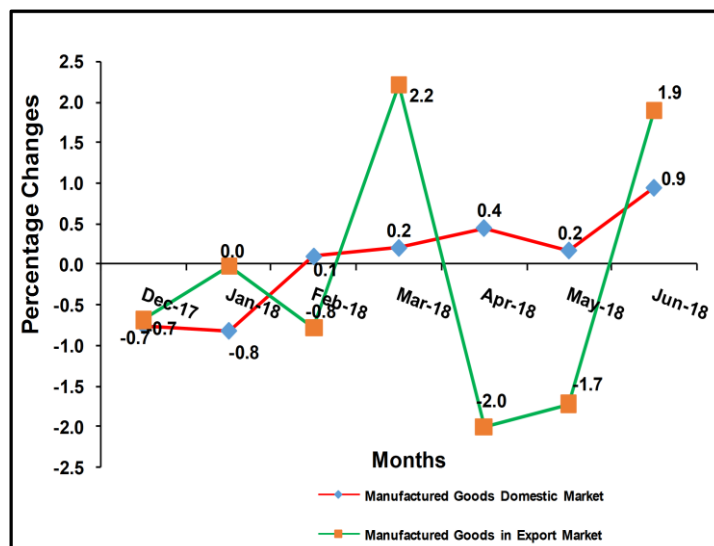
The monthly producer prices of manufactured goods produced for domestic consumption increased by 0.9% in June 2018 compared to 0.2% registered in May 2018.

The rise in monthly prices of domestic manufactured goods was mainly attributed to a rise in prices of Processed Food by 1.3%, Non-metallic Mineral Products by 0.2%, Beverages by 0.1%, Pharmaceutical Products by 1.5% and Printing by 1.1% in June 2018. (Details in Table 2c).

### PPI- M & U for the Export Market

Producer prices of Manufactured Products for Exports increased by 1.9% in June 2018 from decline of minus 1.7% recorded in May 2018. The rise in prices of exported goods was attributed to a rise in prices of Food Products by 2.1%, Other Non-Metallic Mineral Products by 3.0% and Paper & Paper Products by 5.8% in June 2018. (Table 3c).

**Figure 3: Monthly Changes in PPI-M Domestic and Export December 2017 – June 2018**

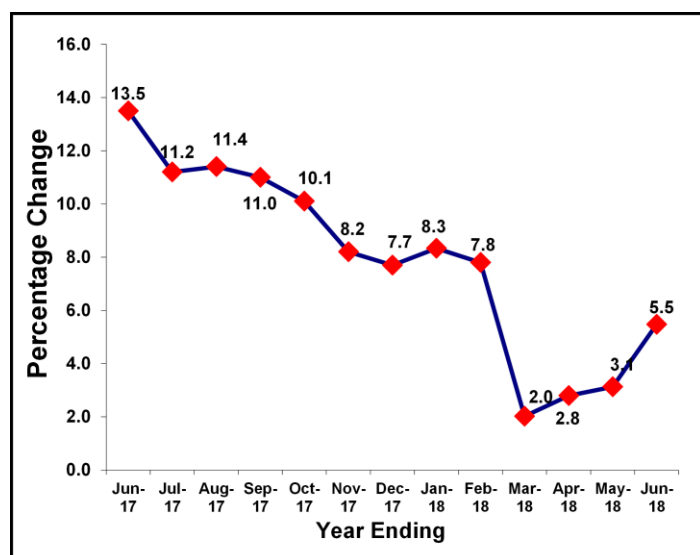


## Producer Price Index for Utilities

### Annual Producer Prices for Utility stood at 5.5 percent

The producer prices for utilities increased by 5.5% for the year ending June 2018 compared to 3.1% recorded for the year ended May 2018.

Figure 4: Annual changes in PPI-Utility June 2017 – June 2018



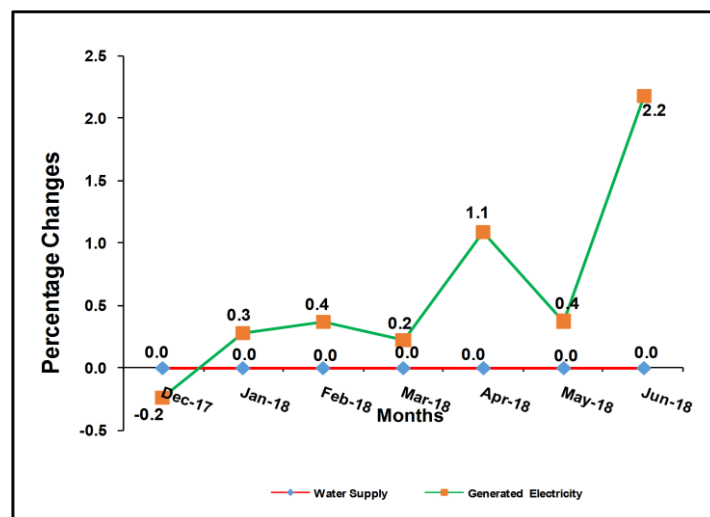
The main contributor to the 5.5% was the rise in prices of Electricity Power Generation by 7.7% registered during the year ending June 2018 compared to 4.8% recorded for the year ended May 2018.

## Monthly Changes in PPI-Utility

The Producer Prices for Utilities increased by 1.8% in June 2018 compared to 0.3% recorded in May 2018. The rise in Utility prices was mainly due to the increase in prices of Electricity Power Generation by 2.2% in June 2018 compared to a rise of 0.4% recorded in May 2018.

Figure 5: Monthly Changes in PPI-Utility December 2017 – June 2018

2018



**Ben Paul Mungyereza**  
Executive Director

Friday 27<sup>th</sup> July 2018

ISSUE (Monthly)

65<sup>th</sup> Issue June 2018

Expected Release Date

25<sup>th</sup> July 2018

Actual Release Date

27<sup>th</sup> July, 2018

For More Information Contact  
Peter Opio (Mr)  
Head Business & Industry Statistics

Tel: 041-237550/371945/0414706016/15 Fax: 041-237553  
Email: [ubos@ubos.org](mailto:ubos@ubos.org) Mobile: 0782319690  
Website: [www.ubos.org](http://www.ubos.org)

Statistics House  
Plot 9, Colville Street, P.O. Box 7186, Kampala

**Table 1a: Monthly Producer Price Index-Manufacturing and Utilities (PPI-M&U) June 2017- June 2018****Base period: July 2009 to June 2010=100**

Industry Group	Weight	Jun-17	Jul-17	Aug-17	Sep-17	Oct-17	Nov-17	Dec-17	Jan-18	Feb-18	Mar-18	Apr-18	May-18	Jun-18
<b>PPI-MANUFACTURING AND UTILITIES (PPI -M&amp;U)</b>	<b>1000.000</b>	<b>182.95</b>	<b>185.41</b>	<b>186.80</b>	<b>186.76</b>	<b>186.79</b>	<b>185.38</b>	<b>184.15</b>	<b>183.30</b>	<b>183.00</b>	<b>184.44</b>	<b>184.00</b>	<b>183.28</b>	<b>185.64</b>
<b>PPI-MANUFACTURING</b>	<b>921.400</b>	<b>182.95</b>	<b>185.75</b>	<b>187.21</b>	<b>186.92</b>	<b>186.86</b>	<b>185.31</b>	<b>184.00</b>	<b>183.03</b>	<b>182.65</b>	<b>184.19</b>	<b>183.56</b>	<b>182.72</b>	<b>184.97</b>
<b>PPI-UTILITIES</b>	<b>78.600</b>	<b>182.89</b>	<b>181.57</b>	<b>182.00</b>	<b>184.94</b>	<b>186.10</b>	<b>186.18</b>	<b>185.80</b>	<b>186.23</b>	<b>186.80</b>	<b>187.13</b>	<b>188.83</b>	<b>189.42</b>	<b>192.90</b>
<b>PPI-MANUFACTURING</b>	<b>921.400</b>	<b>182.95</b>	<b>185.75</b>	<b>187.21</b>	<b>186.92</b>	<b>186.86</b>	<b>185.31</b>	<b>184.00</b>	<b>183.03</b>	<b>182.65</b>	<b>184.19</b>	<b>183.56</b>	<b>182.72</b>	<b>184.97</b>
MANUFACTURE OF FOOD PRODUCTS	364.960	203.96	206.93	209.87	209.47	210.34	206.89	202.91	202.19	200.37	201.99	199.74	197.71	200.84
MANUFACTURE OF BEVERAGES	77.507	167.25	174.35	174.59	174.57	175.23	175.45	175.08	167.78	167.80	167.88	168.37	168.75	170.40
MANUFACTURE OF TOBACCO PRODUCTS	25.344	134.08	131.01	131.13	130.97	131.97	131.99	131.58	132.03	131.96	132.55	133.54	134.32	137.34
MANUFACTURE OF TEXTILES	19.225	219.27	216.06	216.06	216.06	207.80	207.80	207.80	207.80	214.37	214.37	214.37	214.37	219.31
MANUFACTURE OF WEARING APPAREL	55.243	201.39	206.35	206.35	206.88	204.73	204.73	204.73	204.50	207.06	207.59	207.59	207.59	208.83
MANUFACTURE OF LEATHER & RELATED PRODUCTS	15.917	203.89	220.46	204.91	194.63	196.62	198.75	212.33	206.98	198.79	218.71	212.54	208.93	198.37
MANUFACTURE OF WOOD AND PRODUCTS OF WOOD, CORK, EXCEPT FURNITURE	7.316	161.90	163.03	163.06	163.01	163.31	162.19	159.06	155.11	153.57	153.97	155.90	156.12	158.25
MANUFACTURE OF PAPER & PAPER PRODUCTS	15.858	182.18	183.43	184.86	185.33	188.10	188.06	191.41	191.90	192.00	192.83	195.34	196.10	205.19
PRINTING AND REPRODUCTION OF RECORDED MEDIA	25.329	159.04	158.44	158.44	158.13	158.16	157.66	159.37	154.22	156.88	156.90	157.07	157.67	159.40
MANUFACTURE OF CHEMICALS & CHEMICAL PRODUCTS	72.487	165.72	167.10	169.83	169.61	167.32	167.33	167.70	167.01	167.60	169.98	172.62	172.94	174.13
MANUFACTURE OF PHARMACEUTICALS, MEDICINAL CHEMICAL & BOTANICAL PRODUCTS	23.736	175.85	175.71	176.20	175.88	176.69	176.73	180.20	182.29	189.89	190.33	190.65	191.23	194.67
MANUFACTURE OF RUBBER & PLASTIC PRODUCTS	26.455	155.72	155.55	155.55	155.83	154.48	154.48	153.09	154.84	155.40	155.48	157.64	157.64	157.98
MANUFACTURE OF OTHER NON-METALLIC MINERAL PRODUCTS	137.550	135.65	134.91	134.96	135.04	133.34	133.35	133.17	133.94	134.88	135.71	136.63	137.16	138.64
MANUFACTURE OF BASIC METALS	14.534	155.55	156.54	164.00	168.80	173.74	175.72	188.51	195.61	188.61	192.59	194.92	193.96	195.17
MANUFACTURE OF FABRICATED METAL PRODUCTS,EXCEPT MACHINERY AND EQUIPMENT	10.831	154.10	161.03	164.08	169.32	170.02	170.62	170.89	173.98	171.25	173.25	170.53	170.95	175.44
MANUFACTURE OF ELECTRICAL EQUIPMENT	15.239	155.82	155.86	155.87	150.42	150.53	156.25	156.20	156.26	161.61	161.69	163.03	163.12	163.49
MANUFACTURE OF FURNITURE	13.868	159.57	161.81	161.59	162.51	163.10	164.29	167.73	167.86	169.44	169.67	171.06	171.06	172.42

Table 1a- continued

Industry Group	Weight	Jun-17	Jul-17	Aug-17	Sep-17	Oct-17	Nov-17	Dec-17	Jan-18	Feb-18	Mar-18	Apr-18	May-18	Jun-18
<b>MANUFACTURE OF FOOD PRODUCTS</b>	<b>364.960</b>	<b>203.96</b>	<b>206.93</b>	<b>209.87</b>	<b>209.47</b>	<b>210.34</b>	<b>206.89</b>	<b>202.91</b>	<b>202.19</b>	<b>200.37</b>	<b>201.99</b>	<b>199.74</b>	<b>197.71</b>	<b>200.84</b>
Processing and Preserving of meat	8.219	230.18	230.18	230.18	230.18	230.18	230.18	230.18	247.05	247.05	247.25	248.48	248.48	248.48
Processing & Preserving of Fish, Crustaceans and Molluscs	19.899	309.97	311.93	320.59	316.24	334.03	317.82	303.53	312.59	315.35	338.07	307.22	287.02	287.01
Manufacture of Vegetable and Animal Oils and Fats	79.421	211.58	216.06	216.27	216.22	213.08	213.17	212.05	207.05	206.41	207.75	209.47	210.14	210.80
Manufacture of Dairy Products	5.625	141.58	159.49	159.49	161.96	161.96	161.96	161.96	161.96	161.96	161.96	161.96	161.96	161.96
Manufacture of Grain Milling products	82.113	166.52	175.65	179.93	180.26	177.92	177.01	168.36	165.44	159.18	158.92	158.24	159.08	164.69
Manufacture of Bakery products	25.197	161.69	164.06	165.74	167.58	167.58	167.80	168.23	170.12	171.92	171.92	171.92	171.92	171.92
Manufacture of Sugar	56.645	202.76	202.86	202.56	202.83	201.53	194.99	187.69	181.14	172.58	170.21	174.39	178.67	198.30
Coffee Processing	46.351	197.53	197.75	205.20	202.27	202.40	199.27	204.63	204.94	201.63	190.19	198.22	196.53	193.03
Tea Processing	28.588	151.18	154.56	160.75	166.47	167.60	165.80	156.74	156.24	161.55	161.90	159.95	154.20	152.28
Manufacture of Prepared Animal Feeds	12.901	263.78	260.51	260.51	260.73	260.73	260.73	260.73	260.73	260.73	260.73	260.73	260.73	260.73
<b>MANUFACTURE OF BEVERAGES</b>	<b>77.507</b>	<b>167.25</b>	<b>174.35</b>	<b>174.59</b>	<b>174.57</b>	<b>175.23</b>	<b>175.45</b>	<b>175.08</b>	<b>167.78</b>	<b>167.80</b>	<b>167.88</b>	<b>168.37</b>	<b>168.75</b>	<b>170.40</b>
Distilling, rectifying and blending of spirits	2.606	172.43	174.58	179.00	179.66	179.35	180.04	177.47	175.94	177.26	172.37	173.02	173.02	175.20
Manufacture of Malt Liquors and Malt	32.174	159.58	159.58	159.58	159.58	159.58	159.58	159.58	159.58	159.58	159.58	159.58	159.58	159.58
Manufacture of Soft Drinks, Production of Mineral waters and Other bottled waters	42.728	172.54	185.00	185.13	185.06	186.22	186.53	186.06	173.28	173.23	173.69	174.52	175.19	177.96
<b>MANUFACTURE OF TOBACCO PRODUCTS</b>	<b>25.344</b>	<b>134.08</b>	<b>131.01</b>	<b>131.13</b>	<b>130.97</b>	<b>131.97</b>	<b>131.99</b>	<b>131.58</b>	<b>132.03</b>	<b>131.96</b>	<b>132.55</b>	<b>133.54</b>	<b>134.32</b>	<b>137.34</b>
Manufacture of Tobacco Products	25.344	134.08	131.01	131.13	130.97	131.97	131.99	131.58	132.03	131.96	132.55	133.54	134.32	137.34
<b>MANUFACTURE OF TEXTILES</b>	<b>19.225</b>	<b>219.27</b>	<b>216.06</b>	<b>216.06</b>	<b>216.06</b>	<b>207.80</b>	<b>207.80</b>	<b>207.80</b>	<b>207.80</b>	<b>214.37</b>	<b>214.37</b>	<b>214.37</b>	<b>214.37</b>	<b>219.31</b>
Manufacture of made-up textile articles, except apparel	19.225	219.27	216.06	216.06	216.06	207.80	207.80	207.80	207.80	214.37	214.37	214.37	214.37	219.31
<b>MANUFACTURE OF WEARING APPAREL</b>	<b>55.243</b>	<b>201.39</b>	<b>206.35</b>	<b>206.35</b>	<b>206.88</b>	<b>204.73</b>	<b>204.73</b>	<b>204.73</b>	<b>204.50</b>	<b>207.06</b>	<b>207.59</b>	<b>207.59</b>	<b>207.59</b>	<b>208.83</b>
Manufacture of wearing apparel, except fur apparel	55.243	201.39	206.35	206.35	206.88	204.73	204.73	204.73	204.50	207.06	207.59	207.59	207.59	208.83

Table 1a- continued

Industry Group	Weight	Jun-17	Jul-17	Aug-17	Sep-17	Oct-17	Nov-17	Dec-17	Jan-18	Feb-18	Mar-18	Apr-18	May-18	Jun-18
<b>MANUFACTURE OF LEATHER &amp; RELATED PRODUCTS</b>	<b>15.917</b>	<b>203.89</b>	<b>220.46</b>	<b>204.91</b>	<b>194.63</b>	<b>196.62</b>	<b>198.75</b>	<b>212.33</b>	<b>206.98</b>	<b>198.79</b>	<b>218.71</b>	<b>212.54</b>	<b>208.93</b>	<b>198.37</b>
Tanning and dressing of leather; dressing and dyeing of fur	11.844	213.18	233.83	215.32	203.32	205.23	207.84	224.21	216.69	206.64	230.82	223.43	219.06	206.12
Manufacture of footwear	4.073	170.03	165.57	165.57	163.13	165.57	165.57	165.57	171.24	171.24	171.24	171.24	171.24	171.24
<b>MANUFACTURE OF WOOD AND PRODUCTS OF WOOD, CORK, EXCEPT FURNITURE</b>	<b>7.316</b>	<b>161.90</b>	<b>163.03</b>	<b>163.06</b>	<b>163.01</b>	<b>163.31</b>	<b>162.19</b>	<b>159.06</b>	<b>155.11</b>	<b>153.57</b>	<b>153.97</b>	<b>155.90</b>	<b>156.12</b>	<b>158.25</b>
Manufacture of Builders' Carpentry & Joinery	7.316	161.90	163.03	163.06	163.01	163.31	162.19	159.06	155.11	153.57	153.97	155.90	156.12	158.25
<b>MANUFACTURE OF PAPER &amp; PAPER PRODUCTS</b>	<b>15.858</b>	<b>182.18</b>	<b>183.43</b>	<b>184.86</b>	<b>185.33</b>	<b>188.10</b>	<b>188.06</b>	<b>191.41</b>	<b>191.90</b>	<b>192.00</b>	<b>192.83</b>	<b>195.34</b>	<b>196.10</b>	<b>205.19</b>
Manufacture of pulp, paper and paperboard	9.068	210.79	211.99	212.59	213.33	216.01	215.97	220.48	221.59	221.26	222.42	225.23	226.26	238.70
Manufacture of corrugated paper and paperboard and of containers of paper and paperboard	2.931	125.62	128.86	139.39	139.39	147.64	147.64	147.64	144.84	146.20	146.20	146.20	146.20	146.20
Manufacture of other articles of paper and paperboard	3.860	127.48	127.78	127.78	127.77	127.23	127.23	127.89	128.39	128.38	128.50	<b>133.51</b>	<b>133.66</b>	<b>135.90</b>
<b>PRINTING AND REPRODUCTION OF RECORDED MEDIA</b>	<b>25.329</b>	<b>159.04</b>	<b>158.44</b>	<b>158.44</b>	<b>158.13</b>	<b>158.16</b>	<b>157.66</b>	<b>159.37</b>	<b>154.22</b>	<b>156.88</b>	<b>156.90</b>	<b>157.07</b>	<b>157.67</b>	<b>159.40</b>
Printing	25.329	159.04	158.44	158.44	158.13	158.16	157.66	159.37	154.22	156.88	156.90	157.07	157.67	159.40
<b>MANUFACTURE OF CHEMICALS &amp; CHEMICAL PRODUCTS</b>	<b>72.487</b>	<b>165.72</b>	<b>167.10</b>	<b>169.83</b>	<b>169.61</b>	<b>167.32</b>	<b>167.33</b>	<b>167.70</b>	<b>167.01</b>	<b>167.60</b>	<b>169.98</b>	<b>172.62</b>	<b>172.94</b>	<b>174.13</b>
Manufacture of paints, varnishes and similar coatings, printing ink and mastics	10.065	150.38	150.36	150.36	150.36	150.74	150.74	150.74	151.29	152.27	152.27	159.07	159.07	160.63
Manufacture of Soap, Detergents, cleaning and Polishing preparations	49.967	173.83	174.23	177.79	177.51	174.40	174.41	174.91	173.93	174.57	177.73	179.81	180.25	181.44
Manufacture of Other chemical Products n.e.c	12.456	139.50	147.44	147.71	147.69	147.83	147.83	147.83	147.83	147.83	147.83	150.16	150.16	151.18
<b>MANUFACTURE OF PHARMACEUTICALS, MEDICINAL CHEMICAL &amp; BOTANICAL PRODUCTS</b>	<b>23.736</b>	<b>175.85</b>	<b>175.71</b>	<b>176.20</b>	<b>175.88</b>	<b>176.69</b>	<b>176.73</b>	<b>180.20</b>	<b>182.29</b>	<b>189.89</b>	<b>190.33</b>	<b>190.65</b>	<b>191.23</b>	<b>194.67</b>
Manufacture of Pharmaceuticals, medicinal chemical and botanical products	23.736	175.85	175.71	176.20	175.88	176.69	176.73	180.20	182.29	189.89	190.33	190.65	191.23	194.67
<b>MANUFACTURE OF RUBBER &amp; PLASTIC PRODUCTS</b>	<b>26.455</b>	<b>155.72</b>	<b>155.55</b>	<b>155.55</b>	<b>155.83</b>	<b>154.48</b>	<b>154.48</b>	<b>153.09</b>	<b>154.84</b>	<b>155.40</b>	<b>155.48</b>	<b>157.64</b>	<b>157.64</b>	<b>157.98</b>
Manufacture of Plastic products	26.455	155.72	155.55	155.55	155.83	154.48	154.48	153.09	154.84	155.40	155.48	157.64	157.64	157.98

Table 1a- continued

Industry Group	Weight	Jun-17	Jul-17	Aug-17	Sep-17	Oct-17	Nov-17	Dec-17	Jan-18	Feb-18	Mar-18	Apr-18	May-18	Jun-18
<b>MANUFACTURE OF OTHER NON-METALLIC MINERAL PRODUCTS</b>	<b>137.550</b>	<b>135.65</b>	<b>134.91</b>	<b>134.96</b>	<b>135.04</b>	<b>133.34</b>	<b>133.35</b>	<b>133.17</b>	<b>133.94</b>	<b>134.88</b>	<b>135.71</b>	<b>136.63</b>	<b>137.16</b>	<b>138.64</b>
Manufacture of Clay Building Materials	58.241	119.71	120.18	120.18	120.56	119.52	119.52	119.52	119.52	120.74	120.74	120.74	121.71	121.71
Manufacture of Cement, Lime and Plaster	60.121	145.48	146.86	146.95	146.83	144.77	144.79	144.46	145.70	146.46	147.73	149.33	149.94	152.74
Manufacture of Articles of Concrete, cement and plaster	19.188	144.83	134.12	134.15	134.22	132.29	132.29	132.22	133.16	134.11	135.35	135.93	135.16	135.35
<b>MANUFACTURE OF BASIC METALS</b>	<b>14.534</b>	<b>155.55</b>	<b>156.54</b>	<b>164.00</b>	<b>168.80</b>	<b>173.74</b>	<b>175.72</b>	<b>188.51</b>	<b>195.61</b>	<b>188.61</b>	<b>192.59</b>	<b>194.92</b>	<b>193.96</b>	<b>195.17</b>
Manufacture of basic iron and steel	14.534	155.55	156.54	164.00	168.80	173.74	175.72	188.51	195.61	188.61	192.59	194.92	193.96	195.17
<b>MANUFACTURE OF FABRICATED METAL PRODUCTS, EXCEPT MACHINERY AND EQUIPMENT</b>	<b>10.831</b>	<b>154.10</b>	<b>161.03</b>	<b>164.08</b>	<b>169.32</b>	<b>170.02</b>	<b>170.62</b>	<b>170.89</b>	<b>173.98</b>	<b>171.25</b>	<b>173.25</b>	<b>170.53</b>	<b>170.95</b>	<b>175.44</b>
Manufacture of Other Fabricated Metals n.e.c	10.831	154.10	161.03	164.08	169.32	170.02	170.62	170.89	173.98	171.25	173.25	170.53	170.95	175.44
<b>MANUFACTURE OF ELECTRICAL EQUIPMENT</b>	<b>15.239</b>	<b>155.82</b>	<b>155.86</b>	<b>155.87</b>	<b>150.42</b>	<b>150.53</b>	<b>156.25</b>	<b>156.20</b>	<b>156.26</b>	<b>161.61</b>	<b>161.69</b>	<b>163.03</b>	<b>163.12</b>	<b>163.49</b>
Manufacture of Batteries and Accumulators	4.384	168.99	168.99	168.99	168.99	168.99	168.99	168.99	168.99	184.16	184.16	184.16	184.16	184.16
Manufacture of other electronic and electric wires and cables	10.856	149.82	149.87	149.90	141.46	141.63	150.48	150.40	150.48	150.47	150.59	152.74	152.89	153.47
<b>MANUFACTURE OF FURNITURE</b>	<b>13.868</b>	<b>159.57</b>	<b>161.81</b>	<b>161.59</b>	<b>162.51</b>	<b>163.10</b>	<b>164.29</b>	<b>167.73</b>	<b>167.86</b>	<b>169.44</b>	<b>169.67</b>	<b>171.06</b>	<b>171.06</b>	<b>172.42</b>
Manufacture of Furniture	13.868	159.57	161.81	161.59	162.51	163.10	164.29	167.73	167.86	169.44	169.67	171.06	171.06	172.42
<b>PPI-UTILITIES</b>	<b>78.600</b>	<b>182.89</b>	<b>181.57</b>	<b>182.00</b>	<b>184.94</b>	<b>186.10</b>	<b>186.18</b>	<b>185.80</b>	<b>186.23</b>	<b>186.80</b>	<b>187.13</b>	<b>188.83</b>	<b>189.42</b>	<b>192.90</b>
Water collection, treatment and supply	18.284	175.17	167.93	167.93	167.93	167.93	167.93	167.93	167.93	167.93	167.93	167.93	167.93	167.93
Electricity power generation	60.316	185.11	185.32	185.85	189.50	190.94	191.04	190.58	191.10	191.80	192.22	194.31	195.03	199.28

**Table1b: Annual changes in Producer Price Index-Manufacturing and Utilities (PPI-M&U) June 2017 to June 2018****Base period: July 2009 to June 2010=100**

Industry Group	Weight	Jun-17	Jul-17	Aug-17	Sep-17	Oct-17	Nov-17	Dec-17	Jan-18	Feb-18	Mar-18	Apr-18	May-18	Jun-18
<b>PPI-MANUFACTURING AND UTILITIES (PPI -M&amp;U)</b>	<b>1000.000</b>	<b>7.0</b>	<b>7.3</b>	<b>7.9</b>	<b>7.0</b>	<b>6.7</b>	<b>4.1</b>	<b>2.1</b>	<b>1.3</b>	<b>0.7</b>	<b>0.2</b>	<b>0.3</b>	<b>-0.8</b>	<b>1.5</b>
<b>PPI-MANUFACTURING</b>	<b>921.400</b>	<b>6.5</b>	<b>7.0</b>	<b>7.6</b>	<b>6.7</b>	<b>6.5</b>	<b>3.8</b>	<b>1.7</b>	<b>0.8</b>	<b>0.1</b>	<b>0.1</b>	<b>0.1</b>	<b>-1.2</b>	<b>1.1</b>
<b>PPI-UTILITIES</b>	<b>78.600</b>	<b>13.5</b>	<b>11.2</b>	<b>11.4</b>	<b>11.0</b>	<b>10.1</b>	<b>8.2</b>	<b>7.7</b>	<b>8.3</b>	<b>7.8</b>	<b>2.0</b>	<b>2.8</b>	<b>3.1</b>	<b>5.5</b>
<b>PPI-MANUFACTURING</b>	<b>921.400</b>	<b>6.5</b>	<b>7.0</b>	<b>7.6</b>	<b>6.7</b>	<b>6.5</b>	<b>3.8</b>	<b>1.7</b>	<b>0.8</b>	<b>0.1</b>	<b>0.1</b>	<b>0.1</b>	<b>-1.2</b>	<b>1.1</b>
MANUFACTURE OF FOOD PRODUCTS	364.960	10.4	9.7	11.0	9.3	9.7	5.2	1.2	0.0	-1.9	-1.5	-2.0	-4.1	-1.5
MANUFACTURE OF BEVERAGES	77.507	3.5	7.9	8.2	8.2	8.1	7.3	6.4	1.4	1.5	0.5	0.6	0.8	1.9
MANUFACTURE OF TOBACCO PRODUCTS	25.344	3.3	2.3	2.4	2.1	1.7	-0.9	-2.0	-1.9	-1.5	-1.3	-1.0	-0.5	2.4
MANUFACTURE OF TEXTILES	19.225	9.5	9.8	9.8	7.9	3.8	3.8	1.2	1.2	3.5	-6.0	-2.2	-2.2	0.0
MANUFACTURE OF WEARING APPAREL	55.243	-1.1	0.8	0.8	0.8	-0.3	-0.4	-0.9	-0.3	1.3	-0.1	3.1	3.1	3.7
MANUFACTURE OF LEATHER & RELATED PRODUCTS	15.917	0.1	10.0	2.0	-4.4	-1.3	0.0	6.1	5.3	-2.0	8.0	6.0	-3.1	-2.7
MANUFACTURE OF WOOD AND PRODUCTS OF WOOD, CORK, EXCEPT FURNITURE	7.316	4.0	4.1	3.3	3.2	2.7	1.2	-0.8	-2.7	-3.6	-3.4	-2.3	-3.7	-2.3
MANUFACTURE OF PAPER & PAPER PRODUCTS	15.858	2.0	1.4	3.9	4.2	5.8	3.7	4.3	4.3	5.6	5.6	6.5	6.8	12.6
PRINTING AND REPRODUCTION OF RECORDED MEDIA	25.329	3.5	3.5	0.9	0.9	0.9	0.9	2.2	-1.3	0.4	-0.3	-0.2	-1.0	0.2
MANUFACTURE OF CHEMICALS & CHEMICAL PRODUCTS	72.487	5.0	2.8	4.5	4.0	2.0	-0.4	-1.0	1.0	3.5	4.4	1.7	1.9	5.1
MANUFACTURE OF PHARMACEUTICALS, MEDICINAL CHEMICAL & BOTANICAL PRODUCTS	23.736	0.4	0.6	-0.2	0.1	0.0	-1.3	0.4	1.3	5.7	6.2	5.1	5.0	10.7
MANUFACTURE OF RUBBER & PLASTIC PRODUCTS	26.455	1.8	0.8	0.8	0.9	0.9	0.6	-0.3	-0.5	-0.1	-0.1	1.2	1.2	1.4
MANUFACTURE OF OTHER NON-METALLIC MINERAL PRODUCTS	137.550	-0.4	0.2	0.2	0.2	-1.6	-2.4	-2.9	-2.5	-1.7	-1.2	-1.4	0.4	2.2
MANUFACTURE OF BASIC METALS	14.534	9.7	10.5	15.5	19.5	22.0	19.5	26.4	29.8	22.7	22.8	24.0	24.6	25.5
MANUFACTURE OF FABRICATED METAL PRODUCTS, EXCEPT MACHINERY AND EQUIPMENT	10.831	-0.5	4.5	7.0	11.7	10.6	9.7	9.0	8.3	6.3	9.4	9.7	10.8	13.8
MANUFACTURE OF ELECTRICAL EQUIPMENT	15.239	1.6	1.6	3.4	2.4	2.3	6.0	3.6	0.3	3.8	3.8	4.6	4.6	4.9
MANUFACTURE OF FURNITURE	13.868	6.7	9.0	8.4	8.5	8.7	8.8	8.3	8.4	8.0	7.4	7.2	7.2	8.1

**Table 1b- continued**

Industry Group	Weight	Jun-17	Jul-17	Aug-17	Sep-17	Oct-17	Nov-17	Dec-17	Jan-18	Feb-18	Mar-18	Apr-18	May-18	Jun-18
<b>MANUFACTURE OF FOOD PRODUCTS</b>	<b>364.960</b>	<b>10.4</b>	<b>9.7</b>	<b>11.0</b>	<b>9.3</b>	<b>9.7</b>	<b>5.2</b>	<b>1.2</b>	<b>0.0</b>	<b>-1.9</b>	<b>-1.5</b>	<b>-2.0</b>	<b>-4.1</b>	<b>-1.5</b>
Processing and Preserving of meat	8.219	6.3	5.8	5.8	5.8	4.2	4.2	4.2	12.3	12.3	12.4	9.6	8.0	8.0
Processing & Preserving of Fish, Crustaceans and Molluscs	19.899	19.9	11.6	21.4	12.5	19.7	11.3	6.8	2.7	0.5	6.5	-0.6	-7.4	-7.4
Manufacture of Vegetable and Animal Oils and Fats	79.421	7.3	7.5	4.2	3.5	5.0	2.4	-0.6	-3.9	-4.0	-3.8	-0.4	-1.6	-0.4
Manufacture of Dairy Products	5.625	4.5	22.0	22.0	23.4	23.4	23.4	23.4	18.0	15.6	15.2	15.1	14.4	14.4
Manufacture of Grain Milling products	82.113	17.9	25.1	28.1	26.2	24.1	22.7	15.8	11.8	4.0	2.7	-0.1	-3.1	-1.1
Manufacture of Bakery products	25.197	0.7	2.2	3.3	6.0	6.0	6.1	6.4	5.7	6.8	6.7	6.3	6.3	6.3
Manufacture of Sugar	56.645	16.6	15.5	15.6	15.1	11.3	5.0	-0.7	-5.5	-11.1	-13.1	-12.3	-12.2	-2.2
Coffee Processing	46.351	4.8	3.4	5.5	4.0	-0.9	-4.1	-7.5	-0.9	-2.1	-6.7	-1.4	-2.8	-2.3
Tea Processing	28.588	18.2	16.1	20.1	25.4	28.2	22.4	16.1	14.0	15.9	16.1	9.9	3.2	0.7
Manufacture of Prepared Animal Feeds	12.901	-1.6	-2.8	-2.8	-2.7	-1.3	-9.0	-9.0	-10.2	-10.1	-10.1	-10.5	-9.8	-1.2
<b>MANUFACTURE OF BEVERAGES</b>	<b>77.507</b>	<b>3.5</b>	<b>7.9</b>	<b>8.2</b>	<b>8.2</b>	<b>8.1</b>	<b>7.3</b>	<b>6.4</b>	<b>1.4</b>	<b>1.5</b>	<b>0.5</b>	<b>0.6</b>	<b>0.8</b>	<b>1.9</b>
Distilling, rectifying and blending of spirits	2.606	11.7	10.8	13.6	14.1	14.5	14.6	12.7	9.5	8.3	5.4	5.0	5.0	1.6
Manufacture of Malt Liquors and Malt	32.174	0.0	0.0	0.0	0.0	0.0	0.0	0.0	0.0	0.0	0.0	0.0	0.0	0.0
Manufacture of Soft Drinks, Production of Mineral waters and Other bottled waters	42.728	5.5	13.3	13.6	13.5	13.4	11.7	10.3	1.8	2.1	0.6	0.8	1.1	3.1
<b>MANUFACTURE OF TOBACCO PRODUCTS</b>	<b>25.344</b>	<b>3.3</b>	<b>2.3</b>	<b>2.4</b>	<b>2.1</b>	<b>1.7</b>	<b>-0.9</b>	<b>-2.0</b>	<b>-1.9</b>	<b>-1.5</b>	<b>-1.3</b>	<b>-1.0</b>	<b>-0.5</b>	<b>2.4</b>
Manufacture of Tobacco Products	25.344	3.3	2.3	2.4	2.1	1.7	-0.9	-2.0	-1.9	-1.5	-1.3	-1.0	-0.5	2.4
<b>MANUFACTURE OF TEXTILES</b>	<b>19.225</b>	<b>9.5</b>	<b>9.8</b>	<b>9.8</b>	<b>7.9</b>	<b>3.8</b>	<b>3.8</b>	<b>1.2</b>	<b>1.2</b>	<b>3.5</b>	<b>-6.0</b>	<b>-2.2</b>	<b>-2.2</b>	<b>0.0</b>
Manufacture of made-up textile articles, except apparel	19.225	9.5	9.8	9.8	7.9	3.8	3.8	1.2	1.2	3.5	-6.0	-2.2	-2.2	0.0
<b>MANUFACTURE OF WEARING APPAREL</b>	<b>55.243</b>	<b>-1.1</b>	<b>0.8</b>	<b>0.8</b>	<b>0.8</b>	<b>-0.3</b>	<b>-0.4</b>	<b>-0.9</b>	<b>-0.3</b>	<b>1.3</b>	<b>-0.1</b>	<b>3.1</b>	<b>3.1</b>	<b>3.7</b>
Manufacture of wearing apparel, except fur apparel	55.243	-1.1	0.8	0.8	0.8	-0.3	-0.4	-0.9	-0.3	1.3	-0.1	3.1	3.1	3.7



Table 1b- continued

Industry Group	Weight	Jun-17	Jul-17	Aug-17	Sep-17	Oct-17	Nov-17	Dec-17	Jan-18	Feb-18	Mar-18	Apr-18	May-18	Jun-18
<b>MANUFACTURE OF LEATHER &amp; RELATED PRODUCTS</b>	<b>15.917</b>	<b>0.1</b>	<b>10.0</b>	<b>2.0</b>	<b>-4.4</b>	<b>-1.3</b>	<b>0.0</b>	<b>6.1</b>	<b>5.3</b>	<b>-2.0</b>	<b>8.0</b>	<b>6.0</b>	<b>-3.1</b>	<b>-2.7</b>
Tanning and dressing of leather; dressing and dyeing of fur	11.844	-0.3	10.5	1.5	-5.2	-2.0	-0.5	6.9	5.5	-2.7	8.9	6.7	-3.7	-3.3
Manufacture of footwear	4.073	2.8	6.4	6.4	1.5	3.0	3.0	0.5	4.0	1.9	1.9	1.9	0.7	0.7
<b>MANUFACTURE OF WOOD AND PRODUCTS OF WOOD, CORK, EXCEPT FURNITURE</b>	<b>7.316</b>	<b>4.0</b>	<b>4.1</b>	<b>3.3</b>	<b>3.2</b>	<b>2.7</b>	<b>1.2</b>	<b>-0.8</b>	<b>-2.7</b>	<b>-3.6</b>	<b>-3.4</b>	<b>-2.3</b>	<b>-3.7</b>	<b>-2.3</b>
Manufacture of Builders' Carpentry & Joinery	7.316	4.0	4.1	3.3	3.2	2.7	1.2	-0.8	-2.7	-3.6	-3.4	-2.3	-3.7	-2.3
<b>MANUFACTURE OF PAPER &amp; PAPER PRODUCTS</b>	<b>15.858</b>	<b>2.0</b>	<b>1.4</b>	<b>3.9</b>	<b>4.2</b>	<b>5.8</b>	<b>3.7</b>	<b>4.3</b>	<b>4.3</b>	<b>5.6</b>	<b>5.6</b>	<b>6.5</b>	<b>6.8</b>	<b>12.6</b>
Manufacture of pulp, paper and paperboard	9.068	3.0	2.3	4.6	4.7	5.6	3.2	4.0	4.1	5.4	5.4	6.1	6.4	13.2
Manufacture of corrugated paper and paperboard and of containers of paper and paperboard	2.931	-2.8	-0.7	8.1	12.8	18.9	17.1	16.4	14.0	15.7	16.5	16.4	16.4	16.4
Manufacture of other articles of paper and paperboard	3.860	-3.3	-5.1	-5.1	-5.2	-2.2	-2.3	-1.9	-1.6	-1.5	-1.5	2.3	3.9	6.6
<b>PRINTING AND REPRODUCTION OF RECORDED MEDIA</b>	<b>25.329</b>	<b>3.5</b>	<b>3.5</b>	<b>0.9</b>	<b>0.9</b>	<b>0.9</b>	<b>0.9</b>	<b>2.2</b>	<b>-1.3</b>	<b>0.4</b>	<b>-0.3</b>	<b>-0.2</b>	<b>-1.0</b>	<b>0.2</b>
Printing	25.329	3.5	3.5	0.9	0.9	0.9	0.9	2.2	-1.3	0.4	-0.3	-0.2	-1.0	0.2
<b>MANUFACTURE OF CHEMICALS &amp; CHEMICAL PRODUCTS</b>	<b>72.487</b>	<b>5.0</b>	<b>2.8</b>	<b>4.5</b>	<b>4.0</b>	<b>2.0</b>	<b>-0.4</b>	<b>-1.0</b>	<b>1.0</b>	<b>3.5</b>	<b>4.4</b>	<b>1.7</b>	<b>1.9</b>	<b>5.1</b>
Manufacture of paints, varnishes and similar coatings, printing ink and mastics	10.065	2.6	2.6	2.6	2.6	2.6	2.6	1.5	2.2	2.3	1.4	5.8	5.8	6.8
Manufacture of Soap, Detergents, cleaning and Polishing preparations	49.967	6.0	2.9	5.1	4.4	1.8	-1.2	-1.8	0.4	3.6	4.9	0.7	1.0	4.4
Manufacture of Other chemical Products n.e.c	12.456	0.1	2.0	2.1	2.1	2.2	2.2	2.2	3.3	3.4	3.3	4.9	4.9	8.4
<b>MANUFACTURE OF PHARMACEUTICALS, MEDICINAL CHEMICAL &amp; BOTANICAL PRODUCTS</b>	<b>23.736</b>	<b>0.4</b>	<b>0.6</b>	<b>-0.2</b>	<b>0.1</b>	<b>0.0</b>	<b>-1.3</b>	<b>0.4</b>	<b>1.3</b>	<b>5.7</b>	<b>6.2</b>	<b>5.1</b>	<b>5.0</b>	<b>10.7</b>
Manufacture of Pharmaceuticals, medicinal chemical and botanical products	23.736	0.4	0.6	-0.2	0.1	0.0	-1.3	0.4	1.3	5.7	6.2	5.1	5.0	10.7
<b>MANUFACTURE OF RUBBER &amp; PLASTIC PRODUCTS</b>	<b>26.455</b>	<b>1.8</b>	<b>0.8</b>	<b>0.8</b>	<b>0.9</b>	<b>0.9</b>	<b>0.6</b>	<b>-0.3</b>	<b>-0.5</b>	<b>-0.1</b>	<b>-0.1</b>	<b>1.2</b>	<b>1.2</b>	<b>1.4</b>
Manufacture of Plastic products	26.455	1.8	0.8	0.8	0.9	0.9	0.6	-0.3	-0.5	-0.1	-0.1	1.2	1.2	1.4

Table 1b- continued

Industry Group	Weight	Jun-17	Jul-17	Aug-17	Sep-17	Oct-17	Nov-17	Dec-17	Jan-18	Feb-18	Mar-18	Apr-18	May-18	Jun-18
<b>MANUFACTURE OF OTHER NON-METALLIC MINERAL PRODUCTS</b>	<b>137.550</b>	<b>-0.4</b>	<b>0.2</b>	<b>0.2</b>	<b>0.2</b>	<b>-1.6</b>	<b>-2.4</b>	<b>-2.9</b>	<b>-2.5</b>	<b>-1.7</b>	<b>-1.2</b>	<b>-1.4</b>	<b>0.4</b>	<b>2.2</b>
Manufacture of Clay Building Materials	58.241	-3.0	-1.2	-1.2	-0.9	-1.8	-1.8	-1.8	-2.1	-1.1	-1.1	-0.6	1.7	1.7
Manufacture of Cement, Lime and Plaster	60.121	-1.1	1.0	1.1	0.9	-1.1	-2.7	-3.4	-2.7	-1.9	-1.2	-0.4	1.7	5.0
Manufacture of Articles of Concrete, cement and plaster	19.188	7.7	-0.1	-0.3	-0.2	-2.6	-2.6	-3.0	-2.5	-1.8	-0.9	-6.1	-6.7	-6.5
<b>MANUFACTURE OF BASIC METALS</b>	<b>14.534</b>	<b>9.7</b>	<b>10.5</b>	<b>15.5</b>	<b>19.5</b>	<b>22.0</b>	<b>19.5</b>	<b>26.4</b>	<b>29.8</b>	<b>22.7</b>	<b>22.8</b>	<b>24.0</b>	<b>24.6</b>	<b>25.5</b>
Manufacture of basic iron and steel	14.534	9.7	10.5	15.5	19.5	22.0	19.5	26.4	29.8	22.7	22.8	24.0	24.6	25.5
<b>MANUFACTURE OF FABRICATED METAL PRODUCTS, EXCEPT MACHINERY AND EQUIPMENT</b>	<b>10.831</b>	<b>-0.5</b>	<b>4.5</b>	<b>7.0</b>	<b>11.7</b>	<b>10.6</b>	<b>9.7</b>	<b>9.0</b>	<b>8.3</b>	<b>6.3</b>	<b>9.4</b>	<b>9.7</b>	<b>10.8</b>	<b>13.8</b>
Manufacture of Other Fabricated Metals n.e.c	10.831	-0.5	4.5	7.0	11.7	10.6	9.7	9.0	8.3	6.3	9.4	9.7	10.8	13.8
<b>MANUFACTURE OF ELECTRICAL EQUIPMENT</b>	<b>15.239</b>	<b>1.6</b>	<b>1.6</b>	<b>3.4</b>	<b>2.4</b>	<b>2.3</b>	<b>6.0</b>	<b>3.6</b>	<b>0.3</b>	<b>3.8</b>	<b>3.8</b>	<b>4.6</b>	<b>4.6</b>	<b>4.9</b>
Manufacture of Batteries and Accumulators	4.384	0.0	0.0	0.0	0.0	0.0	0.0	0.0	0.0	9.0	9.0	9.0	9.0	9.0
Manufacture of other electronic and electric wires and cables	10.856	2.6	2.6	5.6	4.1	4.0	10.1	5.8	0.4	0.6	0.6	1.9	1.9	2.4
<b>MANUFACTURE OF FURNITURE</b>	<b>13.868</b>	<b>6.7</b>	<b>9.0</b>	<b>8.4</b>	<b>8.5</b>	<b>8.7</b>	<b>8.8</b>	<b>8.3</b>	<b>8.4</b>	<b>8.0</b>	<b>7.4</b>	<b>7.2</b>	<b>7.2</b>	<b>8.1</b>
Manufacture of Furniture	13.868	6.7	9.0	8.4	8.5	8.7	8.8	8.3	8.4	8.0	7.4	7.2	7.2	8.1
<b>PPI-UTILITIES</b>	<b>78.600</b>	<b>13.5</b>	<b>11.2</b>	<b>11.4</b>	<b>11.0</b>	<b>10.1</b>	<b>8.2</b>	<b>7.7</b>	<b>8.3</b>	<b>7.8</b>	<b>2.0</b>	<b>2.8</b>	<b>3.1</b>	<b>5.5</b>
Water collection, treatment and supply	18.284	8.0	-0.4	-0.4	-0.4	-0.4	-0.4	-0.4	-0.4	-4.1	-4.1	-4.1	-4.1	-4.1
Electricity power generation	60.316	15.1	14.7	15.0	14.2	12.9	10.4	9.8	10.5	11.1	3.5	4.4	4.8	7.7

**Table1c: Monthly Changes in Producer Price Index-Manufacturing and Utilities (PPI-M&U) June 2017 to June 2018**

Base period: July 2009 to June 2010=100

Industry Group	Weight	Jun-17	Jul-17	Aug-17	Sep-17	Oct-17	Nov-17	Dec-17	Jan-18	Feb-18	Mar-18	Apr-18	May-18	Jun-18
<b>PPI-MANUFACTURING AND UTILITIES (PPI -M&amp;U)</b>	<b>1000.000</b>	<b>-1.0</b>	<b>1.3</b>	<b>0.7</b>	<b>0.0</b>	<b>0.0</b>	<b>-0.8</b>	<b>-0.7</b>	<b>-0.5</b>	<b>-0.2</b>	<b>0.8</b>	<b>-0.2</b>	<b>-0.4</b>	<b>1.3</b>
<b>PPI-MANUFACTURING</b>	<b>921.400</b>	<b>-1.0</b>	<b>1.5</b>	<b>0.8</b>	<b>-0.2</b>	<b>0.0</b>	<b>-0.8</b>	<b>-0.7</b>	<b>-0.5</b>	<b>-0.2</b>	<b>0.8</b>	<b>-0.3</b>	<b>-0.5</b>	<b>1.2</b>
<b>PPI-UTILITIES</b>	<b>78.600</b>	<b>-0.4</b>	<b>-0.7</b>	<b>0.2</b>	<b>1.6</b>	<b>0.6</b>	<b>0.0</b>	<b>-0.2</b>	<b>0.2</b>	<b>0.3</b>	<b>0.2</b>	<b>0.9</b>	<b>0.3</b>	<b>1.8</b>
<b>PPI-MANUFACTURING</b>	<b>921.400</b>	<b>-1.0</b>	<b>1.5</b>	<b>0.8</b>	<b>-0.2</b>	<b>0.0</b>	<b>-0.8</b>	<b>-0.7</b>	<b>-0.5</b>	<b>-0.2</b>	<b>0.8</b>	<b>-0.3</b>	<b>-0.5</b>	<b>1.2</b>
MANUFACTURE OF FOOD PRODUCTS	364.960	-1.1	1.5	1.4	-0.2	0.4	-1.6	-1.9	-0.4	-0.9	0.8	-1.1	-1.0	1.6
MANUFACTURE OF BEVERAGES	77.507	-0.1	4.2	0.1	0.0	0.4	0.1	-0.2	-4.2	0.0	0.0	0.3	0.2	1.0
MANUFACTURE OF TOBACCO PRODUCTS	25.344	-0.7	-2.3	0.1	-0.1	0.8	0.0	-0.3	0.3	-0.1	0.5	0.7	0.6	2.2
MANUFACTURE OF TEXTILES	19.225	0.0	-1.5	0.0	0.0	-3.8	0.0	0.0	0.0	3.2	0.0	0.0	0.0	2.3
MANUFACTURE OF WEARING APPAREL	55.243	0.0	2.5	0.0	0.3	-1.0	0.0	0.0	-0.1	1.3	0.3	0.0	0.0	0.6
MANUFACTURE OF LEATHER & RELATED PRODUCTS	15.917	-5.5	8.1	-7.1	-5.0	1.0	1.1	6.8	-2.5	-4.0	10.0	-2.8	-1.7	-5.1
MANUFACTURE OF WOOD AND PRODUCTS OF WOOD, CORK, EXCEPT FURNITURE	7.316	-0.2	0.7	0.0	0.0	0.2	-0.7	-1.9	-2.5	-1.0	0.3	1.3	0.1	1.4
MANUFACTURE OF PAPER & PAPER PRODUCTS	15.858	-0.8	0.7	0.8	0.3	1.5	0.0	1.8	0.3	0.1	0.4	1.3	0.4	4.6
PRINTING AND REPRODUCTION OF RECORDED MEDIA	25.329	-0.2	-0.4	0.0	-0.2	0.0	-0.3	1.1	-3.2	1.7	0.0	0.1	0.4	1.1
MANUFACTURE OF CHEMICALS & CHEMICAL PRODUCTS	72.487	-2.4	0.8	1.6	-0.1	-1.4	0.0	0.2	-0.4	0.4	1.4	1.6	0.2	0.7
MANUFACTURE OF PHARMACEUTICALS, MEDICINAL CHEMICAL & BOTANICAL PRODUCTS	23.736	-3.4	-0.1	0.3	-0.2	0.5	0.0	2.0	1.2	4.2	0.2	0.2	0.3	1.8
MANUFACTURE OF RUBBER & PLASTIC PRODUCTS	26.455	0.0	-0.1	0.0	0.2	-0.9	0.0	-0.9	1.1	0.4	0.1	1.4	0.0	0.2
MANUFACTURE OF OTHER NON-METALLIC MINERAL PRODUCTS	137.550	-0.7	-0.5	0.0	0.1	-1.3	0.0	-0.1	0.6	0.7	0.6	0.7	0.4	1.1
MANUFACTURE OF BASIC METALS	14.534	-0.1	0.6	4.8	2.9	2.9	1.1	7.3	3.8	-3.6	2.1	1.2	-0.5	0.6
MANUFACTURE OF FABRICATED METAL PRODUCTS,EXCEPT MACHINERY AND EQUIPMENT	10.831	-0.1	4.5	1.9	3.2	0.4	0.4	0.2	1.8	-1.6	1.2	-1.6	0.2	2.6
MANUFACTURE OF ELECTRICAL EQUIPMENT	15.239	-0.1	0.0	0.0	-3.5	0.1	3.8	0.0	0.0	3.4	0.0	0.8	0.1	0.2
MANUFACTURE OF FURNITURE	13.868	0.0	1.4	-0.1	0.6	0.4	0.7	2.1	0.1	0.9	0.1	0.8	0.0	0.8

**Table 1c- continued**

Industry Group	Weight	Jun-17	Jul-17	Aug-17	Sep-17	Oct-17	Nov-17	Dec-17	Jan-18	Feb-18	Mar-18	Apr-18	May-18	Jun-18
<b>MANUFACTURE OF FOOD PRODUCTS</b>	<b>364.960</b>	<b>-1.1</b>	<b>1.5</b>	<b>1.4</b>	<b>-0.2</b>	<b>0.4</b>	<b>-1.6</b>	<b>-1.9</b>	<b>-0.4</b>	<b>-0.9</b>	<b>0.8</b>	<b>-1.1</b>	<b>-1.0</b>	<b>1.6</b>
Processing and Preserving of meat	8.219	0.0	0.0	0.0	0.0	0.0	0.0	0.0	7.3	0.0	0.1	0.5	0.0	0.0
Processing & Preserving of Fish, Crustaceans and Molluscs	19.899	0.0	0.6	2.8	-1.4	5.6	-4.9	-4.5	3.0	0.9	7.2	-9.1	-6.6	0.0
Manufacture of Vegetable and Animal Oils and Fats	79.421	-0.9	2.1	0.1	0.0	-1.5	0.0	-0.5	-2.4	-0.3	0.6	0.8	0.3	0.3
Manufacture of Dairy Products	5.625	0.0	12.7	0.0	1.5	0.0	0.0	0.0	0.0	0.0	0.0	0.0	0.0	0.0
Manufacture of Grain Milling products	82.113	1.4	5.5	2.4	0.2	-1.3	-0.5	-4.9	-1.7	-3.8	-0.2	-0.4	0.5	3.5
Manufacture of Bakery products	25.197	0.0	1.5	1.0	1.1	0.0	0.1	0.3	1.1	1.1	0.0	0.0	0.0	0.0
Manufacture of Sugar	56.645	-0.4	0.0	-0.1	0.1	-0.6	-3.2	-3.7	-3.5	-4.7	-1.4	2.5	2.5	11.0
Coffee Processing	46.351	-2.3	0.1	3.8	-1.4	0.1	-1.5	2.7	0.2	-1.6	-5.7	4.2	-0.9	-1.8
Tea Processing	28.588	1.2	2.2	4.0	3.6	0.7	-1.1	-5.5	-0.3	3.4	0.2	-1.2	-3.6	-1.2
Manufacture of Prepared Animal Feeds	12.901	-8.7	-1.2	0.0	0.1	0.0	0.0	0.0	0.0	0.0	0.0	0.0	0.0	0.0
<b>MANUFACTURE OF BEVERAGES</b>	<b>77.507</b>	<b>-0.1</b>	<b>4.2</b>	<b>0.1</b>	<b>0.0</b>	<b>0.4</b>	<b>0.1</b>	<b>-0.2</b>	<b>-4.2</b>	<b>0.0</b>	<b>0.0</b>	<b>0.3</b>	<b>0.2</b>	<b>1.0</b>
Distilling, rectifying and blending of spirits	2.606	4.6	1.2	2.5	0.4	-0.2	0.4	-1.4	-0.9	0.8	-2.8	0.4	0.0	1.3
Manufacture of Malt Liquors and Malt	32.174	0.0	0.0	0.0	0.0	0.0	0.0	0.0	0.0	0.0	0.0	0.0	0.0	0.0
Manufacture of Soft Drinks, Production of Mineral waters and Other bottled waters	42.728	-0.4	7.2	0.1	0.0	0.6	0.2	-0.3	-6.9	0.0	0.3	0.5	0.4	1.6
<b>MANUFACTURE OF TOBACCO PRODUCTS</b>	<b>25.344</b>	<b>-0.7</b>	<b>-2.3</b>	<b>0.1</b>	<b>-0.1</b>	<b>0.8</b>	<b>0.0</b>	<b>-0.3</b>	<b>0.3</b>	<b>-0.1</b>	<b>0.5</b>	<b>0.7</b>	<b>0.6</b>	<b>2.2</b>
Manufacture of Tobacco Products	25.344	-0.7	-2.3	0.1	-0.1	0.8	0.0	-0.3	0.3	-0.1	0.5	0.7	0.6	2.2
<b>MANUFACTURE OF TEXTILES</b>	<b>19.225</b>	<b>0.0</b>	<b>-1.5</b>	<b>0.0</b>	<b>0.0</b>	<b>-3.8</b>	<b>0.0</b>	<b>0.0</b>	<b>0.0</b>	<b>3.2</b>	<b>0.0</b>	<b>0.0</b>	<b>0.0</b>	<b>2.3</b>
Manufacture of made-up textile articles, except apparel	19.225	0.0	-1.5	0.0	0.0	-3.8	0.0	0.0	0.0	3.2	0.0	0.0	0.0	2.3
<b>MANUFACTURE OF WEARING APPAREL</b>	<b>55.243</b>	<b>0.0</b>	<b>2.5</b>	<b>0.0</b>	<b>0.3</b>	<b>-1.0</b>	<b>0.0</b>	<b>0.0</b>	<b>-0.1</b>	<b>1.3</b>	<b>0.3</b>	<b>0.0</b>	<b>0.0</b>	<b>0.6</b>
Manufacture of wearing apparel, except fur apparel	55.243	0.0	2.5	0.0	0.3	-1.0	0.0	0.0	-0.1	1.3	0.3	0.0	0.0	0.6

**Table 1c- continued**

Industry Group	Weight	Jun-17	Jul-17	Aug-17	Sep-17	Oct-17	Nov-17	Dec-17	Jan-18	Feb-18	Mar-18	Apr-18	May-18	Jun-18
<b>MANUFACTURE OF LEATHER &amp; RELATED PRODUCTS</b>	<b>15.917</b>	<b>-5.5</b>	<b>8.1</b>	<b>-7.1</b>	<b>-5.0</b>	<b>1.0</b>	<b>1.1</b>	<b>6.8</b>	<b>-2.5</b>	<b>-4.0</b>	<b>10.0</b>	<b>-2.8</b>	<b>-1.7</b>	<b>-5.1</b>
Tanning and dressing of leather; dressing and dyeing of fur	11.844	-6.2	9.7	-7.9	-5.6	0.9	1.3	7.9	-3.4	-4.6	11.7	-3.2	-2.0	-5.9
Manufacture of footwear	4.073	0.0	-2.6	0.0	-1.5	1.5	0.0	0.0	3.4	0.0	0.0	0.0	0.0	0.0
<b>MANUFACTURE OF WOOD AND PRODUCTS OF WOOD, CORK, EXCEPT FURNITURE</b>	<b>7.316</b>	<b>-0.2</b>	<b>0.7</b>	<b>0.0</b>	<b>0.0</b>	<b>0.2</b>	<b>-0.7</b>	<b>-1.9</b>	<b>-2.5</b>	<b>-1.0</b>	<b>0.3</b>	<b>1.3</b>	<b>0.1</b>	<b>1.4</b>
Manufacture of Builders' Carpentry & Joinery	7.316	-0.2	0.7	0.0	0.0	0.2	-0.7	-1.9	-2.5	-1.0	0.3	1.3	0.1	1.4
<b>MANUFACTURE OF PAPER &amp; PAPER PRODUCTS</b>	<b>15.858</b>	<b>-0.8</b>	<b>0.7</b>	<b>0.8</b>	<b>0.3</b>	<b>1.5</b>	<b>0.0</b>	<b>1.8</b>	<b>0.3</b>	<b>0.1</b>	<b>0.4</b>	<b>1.3</b>	<b>0.4</b>	<b>4.6</b>
Manufacture of pulp, paper and paperboard	9.068	-0.8	0.6	0.3	0.3	1.3	0.0	2.1	0.5	-0.1	0.5	1.3	0.5	5.5
Manufacture of corrugated paper and paperboard and of containers of paper and paperboard	2.931	0.0	2.6	8.2	0.0	5.9	0.0	0.0	-1.9	0.9	0.0	0.0	0.0	0.0
Manufacture of other articles of paper and paperboard	3.860	-0.9	0.2	0.0	0.0	-0.4	0.0	0.5	0.4	0.0	0.1	3.9	0.1	1.7
<b>PRINTING AND REPRODUCTION OF RECORDED MEDIA</b>	<b>25.329</b>	<b>-0.2</b>	<b>-0.4</b>	<b>0.0</b>	<b>-0.2</b>	<b>0.0</b>	<b>-0.3</b>	<b>1.1</b>	<b>-3.2</b>	<b>1.7</b>	<b>0.0</b>	<b>0.1</b>	<b>0.4</b>	<b>1.1</b>
Printing	25.329	-0.2	-0.4	0.0	-0.2	0.0	-0.3	1.1	-3.2	1.7	0.0	0.1	0.4	1.1
<b>MANUFACTURE OF CHEMICALS &amp; CHEMICAL PRODUCTS</b>	<b>72.487</b>	<b>-2.4</b>	<b>0.8</b>	<b>1.6</b>	<b>-0.1</b>	<b>-1.4</b>	<b>0.0</b>	<b>0.2</b>	<b>-0.4</b>	<b>0.4</b>	<b>1.4</b>	<b>1.6</b>	<b>0.2</b>	<b>0.7</b>
Manufacture of paints, varnishes and similar coatings, printing ink and mastics	10.065	0.0	0.0	0.0	0.0	0.3	0.0	0.0	0.4	0.6	0.0	4.5	0.0	1.0
Manufacture of Soap, Detergents, cleaning and Polishing preparations	49.967	-2.6	0.2	2.0	-0.2	-1.8	0.0	0.3	-0.6	0.4	1.8	1.2	0.2	0.7
Manufacture of Other chemical Products n.e.c	12.456	-2.5	5.7	0.2	0.0	0.1	0.0	0.0	0.0	0.0	0.0	1.6	0.0	0.7
<b>MANUFACTURE OF PHARMACEUTICALS, MEDICINAL CHEMICAL &amp; BOTANICAL PRODUCTS</b>	<b>23.736</b>	<b>-3.4</b>	<b>-0.1</b>	<b>0.3</b>	<b>-0.2</b>	<b>0.5</b>	<b>0.0</b>	<b>2.0</b>	<b>1.2</b>	<b>4.2</b>	<b>0.2</b>	<b>0.2</b>	<b>0.3</b>	<b>1.8</b>
Manufacture of Pharmaceuticals, medicinal chemical and botanical products	23.736	-3.4	-0.1	0.3	-0.2	0.5	0.0	2.0	1.2	4.2	0.2	0.2	0.3	1.8
<b>MANUFACTURE OF RUBBER &amp; PLASTIC PRODUCTS</b>	<b>26.455</b>	<b>0.0</b>	<b>-0.1</b>	<b>0.0</b>	<b>0.2</b>	<b>-0.9</b>	<b>0.0</b>	<b>-0.9</b>	<b>1.1</b>	<b>0.4</b>	<b>0.1</b>	<b>1.4</b>	<b>0.0</b>	<b>0.2</b>
Manufacture of Plastic products	26.455	0.0	-0.1	0.0	0.2	-0.9	0.0	-0.9	1.1	0.4	0.1	1.4	0.0	0.2

Table 1c- *continued*

Industry Group	Weight	Jun-17	Jul-17	Aug-17	Sep-17	Oct-17	Nov-17	Dec-17	Jan-18	Feb-18	Mar-18	Apr-18	May-18	Jun-18
<b>MANUFACTURE OF OTHER NON-METALLIC MINERAL PRODUCTS</b>	<b>137.550</b>	<b>-0.7</b>	<b>-0.5</b>	<b>0.0</b>	<b>0.1</b>	<b>-1.3</b>	<b>0.0</b>	<b>-0.1</b>	<b>0.6</b>	<b>0.7</b>	<b>0.6</b>	<b>0.7</b>	<b>0.4</b>	<b>1.1</b>
Manufacture of Clay Building Materials	58.241	0.1	0.4	0.0	0.3	-0.9	0.0	0.0	0.0	1.0	0.0	0.0	0.8	0.0
Manufacture of Cement, Lime and Plaster	60.121	-1.3	0.9	0.1	-0.1	-1.4	0.0	-0.2	0.9	0.5	0.9	1.1	0.4	1.9
Manufacture of Articles of Concrete, cement and plaster	19.188	0.0	-7.4	0.0	0.1	-1.4	0.0	-0.1	0.7	0.7	0.9	0.4	-0.6	0.1
<b>MANUFACTURE OF BASIC METALS</b>	<b>14.534</b>	<b>-0.1</b>	<b>0.6</b>	<b>4.8</b>	<b>2.9</b>	<b>2.9</b>	<b>1.1</b>	<b>7.3</b>	<b>3.8</b>	<b>-3.6</b>	<b>2.1</b>	<b>1.2</b>	<b>-0.5</b>	<b>0.6</b>
Manufacture of basic iron and steel	14.534	-0.1	0.6	4.8	2.9	2.9	1.1	7.3	3.8	-3.6	2.1	1.2	-0.5	0.6
<b>MANUFACTURE OF FABRICATED METAL PRODUCTS, EXCEPT MACHINERY AND EQUIPMENT</b>	<b>10.831</b>	<b>-0.1</b>	<b>4.5</b>	<b>1.9</b>	<b>3.2</b>	<b>0.4</b>	<b>0.4</b>	<b>0.2</b>	<b>1.8</b>	<b>-1.6</b>	<b>1.2</b>	<b>-1.6</b>	<b>0.2</b>	<b>2.6</b>
Manufacture of Other Fabricated Metals n.e.c	10.831	-0.1	4.5	1.9	3.2	0.4	0.4	0.2	1.8	-1.6	1.2	-1.6	0.2	2.6
<b>MANUFACTURE OF ELECTRICAL EQUIPMENT</b>	<b>15.239</b>	<b>-0.1</b>	<b>0.0</b>	<b>0.0</b>	<b>-3.5</b>	<b>0.1</b>	<b>3.8</b>	<b>0.0</b>	<b>0.0</b>	<b>3.4</b>	<b>0.0</b>	<b>0.8</b>	<b>0.1</b>	<b>0.2</b>
Manufacture of Batteries and Accumulators	4.384	0.0	0.0	0.0	0.0	0.0	0.0	0.0	0.0	9.0	0.0	0.0	0.0	0.0
Manufacture of other electronic and electric wires and cables	10.856	-0.1	0.0	0.0	-5.6	0.1	6.2	-0.1	0.1	0.0	0.1	1.4	0.1	0.4
<b>MANUFACTURE OF FURNITURE</b>	<b>13.868</b>	<b>0.0</b>	<b>1.4</b>	<b>-0.1</b>	<b>0.6</b>	<b>0.4</b>	<b>0.7</b>	<b>2.1</b>	<b>0.1</b>	<b>0.9</b>	<b>0.1</b>	<b>0.8</b>	<b>0.0</b>	<b>0.8</b>
Manufacture of Furniture	13.868	0.0	1.4	-0.1	0.6	0.4	0.7	2.1	0.1	0.9	0.1	0.8	0.0	0.8
<b>PPI-UTILITIES</b>	<b>78.600</b>	<b>-0.4</b>	<b>-0.7</b>	<b>0.2</b>	<b>1.6</b>	<b>0.6</b>	<b>0.0</b>	<b>-0.2</b>	<b>0.2</b>	<b>0.3</b>	<b>0.2</b>	<b>0.9</b>	<b>0.3</b>	<b>1.8</b>
Water collection, treatment and supply	18.284	0.0	-4.1	0.0	0.0	0.0	0.0	0.0	0.0	0.0	0.0	0.0	0.0	0.0
Electricity power generation	60.316	-0.5	0.1	0.3	2.0	0.8	0.1	-0.2	0.3	0.4	0.2	1.1	0.4	2.2

**Table2a: Monthly Producer Price Index -Manufacturing (Local Market) June 2017 to June 2018**

Base period: July 2009 to June 2010=100

Industry Group	Weight	Jun-17	Jul-17	Aug-17	Sep-17	Oct-17	Nov-17	Dec-17	Jan-18	Feb-18	Mar-18	Apr-18	May-18	Jun-18
<b>PPI-M LOCAL</b>	<b>738.598</b>	<b>170.90</b>	<b>173.50</b>	<b>174.57</b>	<b>174.89</b>	<b>172.84</b>	<b>172.23</b>	<b>170.94</b>	<b>169.55</b>	<b>169.72</b>	<b>170.06</b>	<b>170.82</b>	<b>171.12</b>	<b>172.73</b>
MANUFACTURE OF FOOD PRODUCTS	257.790	187.81	192.19	193.55	193.99	191.28	189.50	185.24	181.73	179.61	179.32	180.16	180.80	183.12
MANUFACTURE OF BEVERAGES	71.418	154.56	152.50	152.72	152.85	152.83	153.11	152.99	153.96	154.03	153.77	153.80	153.80	154.02
MANUFACTURE OF TOBACCO PRODUCTS	10.587	126.55	130.66	130.72	130.64	131.10	131.11	130.93	131.13	131.10	131.37	131.81	132.16	133.49
MANUFACTURE OF TEXTILES	19.225	219.27	216.06	216.06	216.06	207.80	207.80	207.80	207.80	214.37	214.37	214.37	214.37	219.31
MANUFACTURE OF WEARING APPAREL	55.243	201.39	206.35	206.35	206.88	204.73	204.73	204.73	204.50	207.06	207.59	207.59	207.59	208.83
MANUFACTURE OF LEATHER & RELATED PRODUCTS	4.073	170.03	165.57	165.57	163.13	165.57	165.57	165.57	171.24	171.24	171.24	171.24	171.24	171.24
MANUFACTURE OF WOOD AND PRODUCTS OF WOOD, CORK, EXCEPT FURNITURE	7.316	161.90	163.03	163.06	163.01	163.31	162.19	159.06	155.11	153.57	153.97	155.90	156.12	158.25
MANUFACTURE OF PAPER & PAPER PRODUCTS	12.134	126.14	127.70	130.44	130.00	132.22	132.14	133.22	132.27	134.14	134.18	135.88	136.00	136.76
PRINTING AND REPRODUCTION OF RECORDED MEDIA	25.329	159.04	158.44	158.44	158.13	158.16	157.66	159.37	154.22	156.88	156.90	157.07	157.67	159.40
MANUFACTURE OF CHEMICALS & CHEMICAL PRODUCTS	64.540	153.77	159.64	162.90	162.71	159.45	159.45	160.11	157.73	158.49	161.13	163.49	163.49	163.36
MANUFACTURE OF PHARMACEUTICALS, MEDICINAL CHEMICAL & BOTANICAL PRODUCTS	20.817	166.81	166.48	167.02	166.71	167.15	167.18	171.78	174.13	183.50	183.74	183.63	183.94	186.62
MANUFACTURE OF RUBBER & PLASTIC PRODUCTS	22.947	147.87	147.66	147.66	148.01	146.30	146.30	144.52	144.52	145.25	145.36	148.16	148.16	148.59
MANUFACTURE OF OTHER NON-METALLIC MINERAL PRODUCTS	112.706	130.27	129.16	129.16	129.35	126.54	126.54	126.53	127.32	128.62	129.40	130.09	130.38	130.70
MANUFACTURE OF BASIC METALS	14.534	155.55	156.54	164.00	168.80	173.74	175.72	188.51	195.61	188.61	192.59	194.92	193.96	195.17
MANUFACTURE OF FABRICATED METAL PRODUCTS,EXCEPT MACHINERY AND EQUIPMENT	10.831	154.10	161.03	164.08	169.32	170.02	170.62	170.89	173.98	171.25	173.25	170.53	170.95	175.44
MANUFACTURE OF ELECTRICAL EQUIPMENT	15.239	155.82	155.86	155.87	150.42	150.53	156.25	156.20	156.26	161.61	161.69	163.03	163.12	163.49
MANUFACTURE OF FURNITURE	13.868	159.57	161.81	161.59	162.51	163.10	164.29	167.73	167.86	169.44	169.67	171.06	171.06	172.42

**Table 2a- Continued**

Industry Group	Weight	Jun-17	Jul-17	Aug-17	Sep-17	Oct-17	Nov-17	Dec-17	Jan-18	Feb-18	Mar-18	Apr-18	May-18	Jun-18
<b>MANUFACTURE OF FOOD PRODUCTS</b>	<b>257.790</b>	<b>187.81</b>	<b>192.19</b>	<b>193.55</b>	<b>193.99</b>	<b>191.28</b>	<b>189.50</b>	<b>185.24</b>	<b>181.73</b>	<b>179.61</b>	<b>179.32</b>	<b>180.16</b>	<b>180.80</b>	<b>183.12</b>
Processing and Preserving of meat	8.219	230.18	230.18	230.18	230.18	230.18	230.18	230.18	247.05	247.05	247.25	248.48	248.48	248.48
Manufacture of Vegetable and Animal Oils and Fats	57.955	202.93	209.22	209.39	209.50	203.70	203.81	202.63	194.46	193.56	194.85	196.23	196.23	197.94
Manufacture of Dairy Products	5.625	141.58	159.49	159.49	161.96	161.96	161.96	161.96	161.96	161.96	161.96	161.96	161.96	161.96
Manufacture of Grain Milling products	82.113	166.52	175.65	179.93	180.26	177.92	177.01	168.36	165.44	159.18	158.92	158.24	159.08	164.69
Manufacture of Bakery products	25.197	161.69	164.06	165.74	167.58	167.58	167.80	168.23	170.12	171.92	171.92	171.92	171.92	171.92
Manufacture of Sugar	41.587	184.46	184.20	183.51	184.21	180.43	168.99	156.15	141.30	135.01	127.72	134.89	140.28	145.01
Coffee Processing	12.539	192.29	196.90	196.90	196.90	196.90	196.90	196.90	196.79	196.79	196.79	196.79	196.79	196.79
Tea Processing	11.654	149.19	149.80	154.35	155.78	155.75	155.86	153.65	152.09	156.61	156.23	156.54	155.29	154.61
Manufacture of Prepared Animal Feeds	12.901	263.78	260.51	260.51	260.73	260.73	260.73	260.73	260.73	260.73	260.73	260.73	260.73	260.73
<b>MANUFACTURE OF BEVERAGES</b>	<b>71.418</b>	<b>154.56</b>	<b>152.50</b>	<b>152.72</b>	<b>152.85</b>	<b>152.83</b>	<b>153.11</b>	<b>152.99</b>	<b>153.96</b>	<b>154.03</b>	<b>153.77</b>	<b>153.80</b>	<b>153.80</b>	<b>154.02</b>
Distilling, rectifying and blending of spirits	2.606	172.43	174.58	179.00	179.66	179.35	180.04	177.47	175.94	177.26	172.37	173.02	173.02	175.20
Manufacture of Malt Liquors and Malt	32.174	159.58	159.58	159.58	159.58	159.58	159.58	159.58	159.58	159.58	159.58	159.58	159.58	159.58
Manufacture of Soft Drinks, Production of Mineral waters and Other bottled waters	36.638	148.35	143.70	143.70	143.91	143.91	144.46	144.46	146.73	146.73	146.67	146.67	146.67	146.92
<b>MANUFACTURE OF TOBACCO PRODUCTS</b>	<b>10.587</b>	<b>126.55</b>	<b>130.66</b>	<b>130.72</b>	<b>130.64</b>	<b>131.10</b>	<b>131.11</b>	<b>130.93</b>	<b>131.13</b>	<b>131.10</b>	<b>131.37</b>	<b>131.81</b>	<b>132.16</b>	<b>133.49</b>
Manufacture of Tobacco Products	10.587	126.55	130.66	130.72	130.64	131.10	131.11	130.93	131.13	131.10	131.37	131.81	132.16	133.49
<b>MANUFACTURE OF TEXTILES</b>	<b>19.225</b>	<b>219.27</b>	<b>216.06</b>	<b>216.06</b>	<b>216.06</b>	<b>207.80</b>	<b>207.80</b>	<b>207.80</b>	<b>207.80</b>	<b>214.37</b>	<b>214.37</b>	<b>214.37</b>	<b>214.37</b>	<b>219.31</b>
Manufacture of made-up textile articles, except apparel	19.225	219.27	216.06	216.06	216.06	207.80	207.80	207.80	207.80	214.37	214.37	214.37	214.37	219.31



Table 2a-Continued

Industry Group	Weight	Jun-17	Jul-17	Aug-17	Sep-17	Oct-17	Nov-17	Dec-17	Jan-18	Feb-18	Mar-18	Apr-18	May-18	Jun-18
<b>MANUFACTURE OF WEARING APPAREL</b>	<b>55.243</b>	<b>201.39</b>	<b>206.35</b>	<b>206.35</b>	<b>206.88</b>	<b>204.73</b>	<b>204.73</b>	<b>204.73</b>	<b>204.50</b>	<b>207.06</b>	<b>207.59</b>	<b>207.59</b>	<b>207.59</b>	<b>208.83</b>
Manufacture of wearing apparel, except fur apparel	55.243	201.39	206.35	206.35	206.88	204.73	204.73	204.73	204.50	207.06	207.59	207.59	207.59	208.83
<b>MANUFACTURE OF LEATHER &amp; RELATED PRODUCTS</b>	<b>4.073</b>	<b>170.03</b>	<b>165.57</b>	<b>165.57</b>	<b>163.13</b>	<b>165.57</b>	<b>165.57</b>	<b>165.57</b>	<b>171.24</b>	<b>171.24</b>	<b>171.24</b>	<b>171.24</b>	<b>171.24</b>	<b>171.24</b>
Manufacture of footwear	4.073	170.03	165.57	165.57	163.13	165.57	165.57	165.57	171.24	171.24	171.24	171.24	171.24	171.24
<b>MANUFACTURE OF WOOD AND PRODUCTS OF WOOD, CORK, EXCEPT FURNITURE</b>	<b>7.316</b>	<b>161.90</b>	<b>163.03</b>	<b>163.06</b>	<b>163.01</b>	<b>163.31</b>	<b>162.19</b>	<b>159.06</b>	<b>155.11</b>	<b>153.57</b>	<b>153.97</b>	<b>155.90</b>	<b>156.12</b>	<b>158.25</b>
Manufacture of Builders' Carpentry & Joinery	7.316	161.90	163.03	163.06	163.01	163.31	162.19	159.06	155.11	153.57	153.97	155.90	156.12	158.25
<b>MANUFACTURE OF PAPER &amp; PAPER PRODUCTS</b>	<b>12.134</b>	<b>126.14</b>	<b>127.70</b>	<b>130.44</b>	<b>130.00</b>	<b>132.22</b>	<b>132.14</b>	<b>133.22</b>	<b>132.27</b>	<b>134.14</b>	<b>134.18</b>	<b>135.88</b>	<b>136.00</b>	<b>136.76</b>
Manufacture of pulp, paper and paperboard	5.344	125.44	127.00	127.00	125.92	125.95	125.75	127.93	127.25	130.83	130.85	131.33	131.51	131.66
Manufacture of corrugated paper and paperboard and of containers of paper and paperboard	2.931	125.62	128.86	139.39	139.39	147.64	147.64	147.64	144.84	146.20	146.20	146.20	146.20	146.20
Manufacture of other articles of paper and paperboard	3.860	127.48	127.78	127.78	127.77	127.23	127.23	127.89	128.39	128.38	128.50	133.51	133.66	135.90
<b>PRINTING AND REPRODUCTION OF RECORDED MEDIA</b>	<b>25.329</b>	<b>159.04</b>	<b>158.44</b>	<b>158.44</b>	<b>158.13</b>	<b>158.16</b>	<b>157.66</b>	<b>159.37</b>	<b>154.22</b>	<b>156.88</b>	<b>156.90</b>	<b>157.07</b>	<b>157.67</b>	<b>159.40</b>
Printing	25.329	159.04	158.44	158.44	158.13	158.16	157.66	159.37	154.22	156.88	156.90	157.07	157.67	159.40
<b>MANUFACTURE OF CHEMICALS &amp; CHEMICAL PRODUCTS</b>	<b>64.540</b>	<b>153.77</b>	<b>159.64</b>	<b>162.90</b>	<b>162.71</b>	<b>159.45</b>	<b>159.45</b>	<b>160.11</b>	<b>157.73</b>	<b>158.49</b>	<b>161.13</b>	<b>163.49</b>	<b>163.49</b>	<b>163.36</b>
Manufacture of paints, varnishes and similar coatings, printing ink and mastics	10.065	150.38	150.36	150.36	150.36	150.74	150.74	150.74	151.29	152.27	152.27	159.07	159.07	160.63
Manufacture of Soap, Detergents, cleaning and Polishing preparations	42.019	158.27	164.91	169.49	169.22	164.47	164.47	165.41	161.85	162.76	166.58	168.02	168.02	167.24
Manufacture of Other chemical Products n.e.c	12.456	139.50	147.44	147.71	147.69	147.83	147.83	147.83	147.83	147.83	147.83	150.16	150.16	151.18

Table 2a-Continued

Industry Group	Weight	Jun-17	Jul-17	Aug-17	Sep-17	Oct-17	Nov-17	Dec-17	Jan-18	Feb-18	Mar-18	Apr-18	May-18	Jun-18
<b>MANUFACTURE OF PHARMACEUTICALS, MEDICINAL CHEMICAL &amp; BOTANICAL PRODUCTS</b>	<b>20.817</b>	<b>166.81</b>	<b>166.48</b>	<b>167.02</b>	<b>166.71</b>	<b>167.15</b>	<b>167.18</b>	<b>171.78</b>	<b>174.13</b>	<b>183.50</b>	<b>183.74</b>	<b>183.63</b>	<b>183.94</b>	<b>186.62</b>
Manufacture of Pharmaceuticals, medicinal chemical and botanical products	20.817	166.81	166.48	167.02	166.71	167.15	167.18	171.78	174.13	183.50	183.74	183.63	183.94	186.62
<b>MANUFACTURE OF RUBBER &amp; PLASTIC PRODUCTS</b>	<b>22.947</b>	<b>147.87</b>	<b>147.66</b>	<b>147.66</b>	<b>148.01</b>	<b>146.30</b>	<b>146.30</b>	<b>144.52</b>	<b>144.52</b>	<b>145.25</b>	<b>145.36</b>	<b>148.16</b>	<b>148.16</b>	<b>148.59</b>
Manufacture of Plastic products	22.947	147.87	147.66	147.66	148.01	146.30	146.30	144.52	144.52	145.25	145.36	148.16	148.16	148.59
<b>MANUFACTURE OF OTHER NON-METALLIC MINERAL PRODUCTS</b>	<b>112.706</b>	<b>130.27</b>	<b>129.16</b>	<b>129.16</b>	<b>129.35</b>	<b>126.54</b>	<b>126.54</b>	<b>126.53</b>	<b>127.32</b>	<b>128.62</b>	<b>129.40</b>	<b>130.09</b>	<b>130.38</b>	<b>130.70</b>
Manufacture of Clay Building Materials	58.241	119.71	120.18	120.18	120.56	119.52	119.52	119.52	119.52	120.74	120.74	120.74	121.71	121.71
Manufacture of Cement, Lime and Plaster	35.277	137.12	139.34	139.34	139.34	133.82	133.82	133.82	135.57	137.15	138.69	140.29	140.29	141.08
Manufacture of Articles of Concrete, cement and plaster	19.188	144.83	134.12	134.15	134.22	132.29	132.29	132.22	133.16	134.11	135.35	135.93	135.16	135.35
<b>MANUFACTURE OF BASIC METALS</b>	<b>14.534</b>	<b>155.55</b>	<b>156.54</b>	<b>164.00</b>	<b>168.80</b>	<b>173.74</b>	<b>175.72</b>	<b>188.51</b>	<b>195.61</b>	<b>188.61</b>	<b>192.59</b>	<b>194.92</b>	<b>193.96</b>	<b>195.17</b>
Manufacture of basic iron and steel	14.534	155.55	156.54	164.00	168.80	173.74	175.72	188.51	195.61	188.61	192.59	194.92	193.96	195.17
<b>MANUFACTURE OF FABRICATED METAL PRODUCTS, EXCEPT MACHINERY AND EQUIPMENT</b>	<b>10.831</b>	<b>154.10</b>	<b>161.03</b>	<b>164.08</b>	<b>169.32</b>	<b>170.02</b>	<b>170.62</b>	<b>170.89</b>	<b>173.98</b>	<b>171.25</b>	<b>173.25</b>	<b>170.53</b>	<b>170.95</b>	<b>175.44</b>
Manufacture of Other Fabricated Metals n.e.c	10.831	154.10	161.03	164.08	169.32	170.02	170.62	170.89	173.98	171.25	173.25	170.53	170.95	175.44
<b>MANUFACTURE OF ELECTRICAL EQUIPMENT</b>	<b>15.239</b>	<b>155.82</b>	<b>155.86</b>	<b>155.87</b>	<b>150.42</b>	<b>150.53</b>	<b>156.25</b>	<b>156.20</b>	<b>156.26</b>	<b>161.61</b>	<b>161.69</b>	<b>163.03</b>	<b>163.12</b>	<b>163.49</b>
Manufacture of batteries and accumulators	4.384	168.99	168.99	168.99	168.99	168.99	168.99	168.99	168.99	184.16	184.16	184.16	184.16	184.16
Manufacture of other electronic and electric wires and cables	10.856	149.82	149.87	149.90	141.46	141.63	150.48	150.40	150.48	150.47	150.59	152.74	152.89	153.47
<b>MANUFACTURE OF FURNITURE</b>	<b>13.868</b>	<b>159.57</b>	<b>161.81</b>	<b>161.59</b>	<b>162.51</b>	<b>163.10</b>	<b>164.29</b>	<b>167.73</b>	<b>167.86</b>	<b>169.44</b>	<b>169.67</b>	<b>171.06</b>	<b>171.06</b>	<b>172.42</b>
Manufacture of Furniture	13.868	159.57	161.81	161.59	162.51	163.10	164.29	167.73	167.86	169.44	169.67	171.06	171.06	172.42

**Table2b: Annual Changes in Producer Price Index -Manufacturing (Local Market), June 2017 to June 2018**

Base period: July 2009 to June 2010=100

Industry Group	Weight	Jun-17	Jul-17	Aug-17	Sep-17	Oct-17	Nov-17	Dec-17	Jan-18	Feb-18	Mar-18	Apr-18	May-18	Jun-18
<b>PPI-M LOCAL</b>	<b>738.598</b>	<b>6.3</b>	<b>7.4</b>	<b>7.6</b>	<b>7.4</b>	<b>6.4</b>	<b>4.7</b>	<b>3.0</b>	<b>1.7</b>	<b>1.2</b>	<b>0.2</b>	<b>-0.2</b>	<b>-0.8</b>	<b>1.1</b>
MANUFACTURE OF FOOD PRODUCTS	257.790	12.3	13.7	13.5	13.1	12.3	8.6	4.9	1.3	-0.9	-1.7	-3.4	-4.9	-2.5
MANUFACTURE OF BEVERAGES	71.418	2.5	1.3	1.6	1.6	1.6	1.8	1.3	1.2	1.2	-0.3	-0.3	-0.3	-0.4
MANUFACTURE OF TOBACCO PRODUCTS	10.587	-1.8	5.1	5.2	5.0	4.9	3.9	3.4	3.5	3.6	3.7	3.9	4.2	5.5
MANUFACTURE OF TEXTILES	19.225	9.5	9.8	9.8	7.9	3.8	3.8	1.2	1.2	3.5	-6.0	-2.2	-2.2	0.0
MANUFACTURE OF WEARING APPAREL	55.243	-1.1	0.8	0.8	0.8	-0.3	-0.4	-0.9	-0.3	1.3	-0.1	3.1	3.1	3.7
MANUFACTURE OF LEATHER & RELATED PRODUCTS	4.073	2.8	6.4	6.4	1.5	3.0	3.0	0.5	3.9	1.9	1.9	1.9	0.7	0.7
MANUFACTURE OF WOOD AND PRODUCTS OF WOOD, CORK, EXCEPT FURNITURE	7.316	4.0	4.1	3.3	3.2	2.7	1.2	-0.8	-2.7	-3.6	-3.4	-2.3	-3.7	-2.3
MANUFACTURE OF PAPER & PAPER PRODUCTS	12.134	-1.5	-1.1	1.3	2.2	5.1	4.7	5.3	4.1	5.7	5.9	7.2	7.5	8.4
PRINTING AND REPRODUCTION OF RECORDED MEDIA	25.329	3.5	3.5	0.9	0.9	0.9	0.9	2.2	-1.3	0.4	-0.3	-0.2	-1.0	0.2
MANUFACTURE OF CHEMICALS & CHEMICAL PRODUCTS	64.540	6.9	6.2	8.4	7.8	5.4	3.5	3.1	5.3	5.7	7.4	3.1	3.1	6.2
MANUFACTURE OF PHARMACEUTICALS, MEDICINAL CHEMICAL & BOTANICAL PRODUCTS	20.817	-1.4	-1.3	-2.1	-1.6	-1.8	-2.4	0.3	1.4	6.9	7.6	5.9	5.7	11.9
MANUFACTURE OF RUBBER & PLASTIC PRODUCTS	22.947	1.7	0.5	0.4	0.5	0.5	0.1	-1.1	-2.1	-1.7	-1.7	0.2	0.2	0.5
MANUFACTURE OF OTHER NON-METALLIC MINERAL PRODUCTS	112.706	-2.6	-2.0	-2.0	-1.8	-4.1	-4.1	-4.2	-3.8	-2.8	-2.2	-2.7	-0.5	0.3
MANUFACTURE OF BASIC METALS	14.534	9.7	10.5	15.5	19.5	22.0	19.5	26.5	29.8	22.7	22.8	24.0	24.6	25.5
MANUFACTURE OF FABRICATED METAL PRODUCTS, EXCEPT MACHINERY AND EQUIPMENT	10.831	-0.5	4.5	7.0	11.7	10.6	9.7	9.0	8.3	6.3	9.4	9.7	10.8	13.8
MANUFACTURE OF ELECTRICAL EQUIPMENT	15.239	1.6	1.6	3.4	2.4	2.3	6.0	3.6	0.3	3.8	3.8	4.6	4.6	4.9
MANUFACTURE OF FURNITURE	13.868	6.7	9.0	8.4	8.5	8.7	8.8	8.3	8.4	8.0	7.4	7.2	7.2	8.1

Table 2b-Continued

Industry Group	Weight	Jun-17	Jul-17	Aug-17	Sep-17	Oct-17	Nov-17	Dec-17	Jan-18	Feb-18	Mar-18	Apr-18	May-18	Jun-18
<b>MANUFACTURE OF FOOD PRODUCTS</b>	<b>257.790</b>	<b>12.3</b>	<b>13.7</b>	<b>13.5</b>	<b>13.1</b>	<b>12.3</b>	<b>8.6</b>	<b>4.9</b>	<b>1.3</b>	<b>-0.9</b>	<b>-1.7</b>	<b>-3.4</b>	<b>-4.9</b>	<b>-2.5</b>
Processing and Preserving of meat	8.219	6.3	5.8	5.8	5.8	4.2	4.2	4.2	12.3	12.3	12.4	9.6	8.0	8.0
Manufacture of Vegetable and Animal Oils and Fats	57.955	17.8	17.3	13.9	12.7	13.6	10.9	7.6	1.6	1.0	1.0	-2.0	-4.2	-2.5
Manufacture of Dairy Products	5.625	4.5	22.0	22.0	23.4	23.4	23.4	23.4	18.0	15.6	15.2	15.1	14.4	14.4
Manufacture of Grain Milling products	82.113	17.9	25.1	28.1	26.2	24.1	22.7	15.8	11.8	4.0	2.7	-0.1	-3.1	-1.1
Manufacture of Bakery products	25.197	0.7	2.2	3.3	6.0	6.0	6.1	6.4	5.7	6.8	6.7	6.3	6.3	6.3
Manufacture of Sugar	41.587	27.8	25.4	25.4	24.7	17.2	8.5	-2.5	-14.1	-20.6	-26.0	-23.7	-23.9	-21.4
Coffee Processing	12.539	2.1	4.4	4.2	4.5	4.5	4.4	4.1	4.0	4.0	3.1	2.3	2.3	2.3
Tea Processing	11.654	6.3	5.2	7.1	8.8	8.8	8.6	6.1	5.4	8.5	8.1	5.2	4.4	3.6
Manufacture of Prepared Animal Feeds	12.901	-1.6	-2.8	-2.8	-2.7	-1.3	-9.0	-9.0	-10.2	-10.1	-10.1	-10.5	-9.8	-1.2
<b>MANUFACTURE OF BEVERAGES</b>	<b>71.418</b>	<b>2.5</b>	<b>1.3</b>	<b>1.6</b>	<b>1.6</b>	<b>1.6</b>	<b>1.8</b>	<b>1.3</b>	<b>1.2</b>	<b>1.2</b>	<b>-0.3</b>	<b>-0.3</b>	<b>-0.3</b>	<b>-0.4</b>
Distilling, rectifying and blending of spirits	2.606	11.7	10.8	13.6	14.1	14.5	14.6	12.7	9.5	8.3	5.4	5.0	5.0	1.6
Manufacture of Malt Liquors and Malt	32.174	0.0	0.0	0.0	0.0	0.0	0.0	0.0	0.0	0.0	0.0	0.0	0.0	0.0
Manufacture of Soft Drinks, Production of Mineral waters and Other bottled waters	36.638	4.6	1.8	2.2	2.3	2.3	2.6	1.7	1.8	1.8	-1.1	-1.1	-1.1	-1.0
<b>MANUFACTURE OF TOBACCO PRODUCTS</b>	<b>10.587</b>	<b>-1.8</b>	<b>5.1</b>	<b>5.2</b>	<b>5.0</b>	<b>4.9</b>	<b>3.9</b>	<b>3.4</b>	<b>3.5</b>	<b>3.6</b>	<b>3.7</b>	<b>3.9</b>	<b>4.2</b>	<b>5.5</b>
Manufacture of Tobacco Products	10.587	-1.8	5.1	5.2	5.0	4.9	3.9	3.4	3.5	3.6	3.7	3.9	4.2	5.5
<b>MANUFACTURE OF TEXTILES</b>	<b>19.225</b>	<b>9.5</b>	<b>9.8</b>	<b>9.8</b>	<b>7.9</b>	<b>3.8</b>	<b>3.8</b>	<b>1.2</b>	<b>1.2</b>	<b>3.5</b>	<b>-6.0</b>	<b>-2.2</b>	<b>-2.2</b>	<b>0.0</b>
Manufacture of made-up textile articles, except apparel	19.225	9.5	9.8	9.8	7.9	3.8	3.8	1.2	1.2	3.5	-6.0	-2.2	-2.2	0.0

Table 2b-Continued

Industry Group	Weight	Jun-17	Jul-17	Aug-17	Sep-17	Oct-17	Nov-17	Dec-17	Jan-18	Feb-18	Mar-18	Apr-18	May-18	Jun-18
<b>MANUFACTURE OF WEARING APPAREL</b>	<b>55.243</b>	<b>-1.1</b>	<b>0.8</b>	<b>0.8</b>	<b>0.8</b>	<b>-0.3</b>	<b>-0.4</b>	<b>-0.9</b>	<b>-0.3</b>	<b>1.3</b>	<b>-0.1</b>	<b>3.1</b>	<b>3.1</b>	<b>3.7</b>
Manufacture of wearing apparel, except fur apparel	55.243	-1.1	0.8	0.8	0.8	-0.3	-0.4	-0.9	-0.3	1.3	-0.1	3.1	3.1	3.7
<b>MANUFACTURE OF LEATHER &amp; RELATED PRODUCTS</b>	<b>4.073</b>	<b>2.8</b>	<b>6.4</b>	<b>6.4</b>	<b>1.5</b>	<b>3.0</b>	<b>3.0</b>	<b>0.5</b>	<b>3.9</b>	<b>1.9</b>	<b>1.9</b>	<b>1.9</b>	<b>0.7</b>	<b>0.7</b>
Manufacture of footwear	4.073	2.8	6.4	6.4	1.5	3.0	3.0	0.5	3.9	1.9	1.9	1.9	0.7	0.7
<b>MANUFACTURE OF WOOD AND PRODUCTS OF WOOD, CORK, EXCEPT FURNITURE</b>	<b>7.316</b>	<b>4.0</b>	<b>4.1</b>	<b>3.3</b>	<b>3.2</b>	<b>2.7</b>	<b>1.2</b>	<b>-0.8</b>	<b>-2.7</b>	<b>-3.6</b>	<b>-3.4</b>	<b>-2.3</b>	<b>-3.7</b>	<b>-2.3</b>
Manufacture of Builders' Carpentry & Joinery	7.316	4.0	4.1	3.3	3.2	2.7	1.2	-0.8	-2.7	-3.6	-3.4	-2.3	-3.7	-2.3
<b>MANUFACTURE OF PAPER &amp; PAPER PRODUCTS</b>	<b>12.134</b>	<b>-1.5</b>	<b>-1.1</b>	<b>1.3</b>	<b>2.2</b>	<b>5.1</b>	<b>4.7</b>	<b>5.3</b>	<b>4.1</b>	<b>5.7</b>	<b>5.9</b>	<b>7.2</b>	<b>7.5</b>	<b>8.4</b>
Manufacture of pulp, paper and paperboard	5.344	0.8	2.2	2.3	2.1	2.1	2.0	3.6	2.1	5.0	5.1	5.4	4.8	5.0
Manufacture of corrugated paper and paperboard and of containers of paper and paperboard	2.931	-2.8	-0.7	8.1	12.8	18.9	17.1	16.4	14.0	15.7	16.5	16.4	16.4	16.4
Manufacture of other articles of paper and paperboard	3.860	-3.3	-5.1	-5.1	-5.2	-2.2	-2.3	-1.9	-1.6	-1.5	-1.5	2.3	3.9	6.6
<b>PRINTING AND REPRODUCTION OF RECORDED MEDIA</b>	<b>25.329</b>	<b>3.5</b>	<b>3.5</b>	<b>0.9</b>	<b>0.9</b>	<b>0.9</b>	<b>0.9</b>	<b>2.2</b>	<b>-1.3</b>	<b>0.4</b>	<b>-0.3</b>	<b>-0.2</b>	<b>-1.0</b>	<b>0.2</b>
Printing	25.329	3.5	3.5	0.9	0.9	0.9	0.9	2.2	-1.3	0.4	-0.3	-0.2	-1.0	0.2
<b>MANUFACTURE OF CHEMICALS &amp; CHEMICAL PRODUCTS</b>	<b>64.540</b>	<b>6.9</b>	<b>6.2</b>	<b>8.4</b>	<b>7.8</b>	<b>5.4</b>	<b>3.5</b>	<b>3.1</b>	<b>5.3</b>	<b>5.7</b>	<b>7.4</b>	<b>3.1</b>	<b>3.1</b>	<b>6.2</b>
Manufacture of paints, varnishes and similar coatings, printing ink and mastics	10.065	2.6	2.6	2.6	2.6	2.6	2.6	1.5	2.2	2.3	1.4	5.8	5.8	6.8
Manufacture of Soap, Detergents, cleaning and Polishing preparations	42.019	9.5	7.9	10.9	10.0	6.7	3.9	3.6	6.5	7.1	9.6	2.2	2.2	5.7
Manufacture of Other chemical Products n.e.c	12.456	0.1	2.0	2.1	2.1	2.2	2.2	2.2	3.3	3.4	3.3	4.9	4.9	8.4

Table 2b-Continued

Industry Group	Weight	Jun-17	Jul-17	Aug-17	Sep-17	Oct-17	Nov-17	Dec-17	Jan-18	Feb-18	Mar-18	Apr-18	May-18	Jun-18
<b>MANUFACTURE OF PHARMACEUTICALS, MEDICINAL CHEMICAL &amp; BOTANICAL PRODUCTS</b>	<b>20.817</b>	<b>-1.4</b>	<b>-1.3</b>	<b>-2.1</b>	<b>-1.6</b>	<b>-1.8</b>	<b>-2.4</b>	<b>0.3</b>	<b>1.4</b>	<b>6.9</b>	<b>7.6</b>	<b>5.9</b>	<b>5.7</b>	<b>11.9</b>
Manufacture of Pharmaceuticals, medicinal chemical and botanical products	20.817	-1.4	-1.3	-2.1	-1.6	-1.8	-2.4	0.3	1.4	6.9	7.6	5.9	5.7	11.9
<b>MANUFACTURE OF RUBBER &amp; PLASTIC PRODUCTS</b>	<b>22.947</b>	<b>1.7</b>	<b>0.5</b>	<b>0.4</b>	<b>0.5</b>	<b>0.5</b>	<b>0.1</b>	<b>-1.1</b>	<b>-2.1</b>	<b>-1.7</b>	<b>-1.7</b>	<b>0.2</b>	<b>0.2</b>	<b>0.5</b>
Manufacture of Plastic products	22.947	1.7	0.5	0.4	0.5	0.5	0.1	-1.1	-2.1	-1.7	-1.7	0.2	0.2	0.5
<b>MANUFACTURE OF OTHER NON-METALLIC MINERAL PRODUCTS</b>	<b>112.706</b>	<b>-2.6</b>	<b>-2.0</b>	<b>-2.0</b>	<b>-1.8</b>	<b>-4.1</b>	<b>-4.1</b>	<b>-4.2</b>	<b>-3.8</b>	<b>-2.8</b>	<b>-2.2</b>	<b>-2.7</b>	<b>-0.5</b>	<b>0.3</b>
Manufacture of Clay Building Materials	58.241	-3.0	-1.2	-1.2	-0.9	-1.8	-1.8	-1.8	-2.1	-1.1	-1.1	-0.6	1.7	1.7
Manufacture of Cement, Lime and Plaster	35.277	-7.2	-3.5	-3.5	-3.5	-7.4	-7.4	-7.4	-6.2	-5.1	-4.0	-2.9	0.5	2.9
Manufacture of Articles of Concrete, cement and plaster	19.188	7.7	-0.1	-0.3	-0.2	-2.6	-2.6	-3.0	-2.5	-1.8	-0.9	-6.1	-6.7	-6.5
<b>MANUFACTURE OF BASIC METALS</b>	<b>14.534</b>	<b>9.7</b>	<b>10.5</b>	<b>15.5</b>	<b>19.5</b>	<b>22.0</b>	<b>19.5</b>	<b>26.5</b>	<b>29.8</b>	<b>22.7</b>	<b>22.8</b>	<b>24.0</b>	<b>24.6</b>	<b>25.5</b>
Manufacture of basic iron and steel	14.534	9.7	10.5	15.5	19.5	22.0	19.5	26.5	29.8	22.7	22.8	24.0	24.6	25.5
<b>MANUFACTURE OF FABRICATED METAL PRODUCTS, EXCEPT MACHINERY AND EQUIPMENT</b>	<b>10.831</b>	<b>-0.5</b>	<b>4.5</b>	<b>7.0</b>	<b>11.7</b>	<b>10.6</b>	<b>9.7</b>	<b>9.0</b>	<b>8.3</b>	<b>6.3</b>	<b>9.4</b>	<b>9.7</b>	<b>10.8</b>	<b>13.8</b>
Manufacture of Other Fabricated Metals n.e.c	10.831	-0.5	4.5	7.0	11.7	10.6	9.7	9.0	8.3	6.3	9.4	9.7	10.8	13.8
<b>MANUFACTURE OF ELECTRICAL EQUIPMENT</b>	<b>15.239</b>	<b>1.6</b>	<b>1.6</b>	<b>3.4</b>	<b>2.4</b>	<b>2.3</b>	<b>6.0</b>	<b>3.6</b>	<b>0.3</b>	<b>3.8</b>	<b>3.8</b>	<b>4.6</b>	<b>4.6</b>	<b>4.9</b>
Manufacture of batteries and accumulators	4.384	0.0	0.0	0.0	0.0	0.0	0.0	0.0	0.0	9.0	9.0	9.0	9.0	9.0
Manufacture of other electronic and electric wires and cables	10.856	2.6	2.6	5.6	4.1	4.0	10.1	5.8	0.4	0.6	0.6	1.9	1.9	2.4
<b>MANUFACTURE OF FURNITURE</b>	<b>13.868</b>	<b>6.7</b>	<b>9.0</b>	<b>8.4</b>	<b>8.5</b>	<b>8.7</b>	<b>8.8</b>	<b>8.3</b>	<b>8.4</b>	<b>8.0</b>	<b>7.4</b>	<b>7.2</b>	<b>7.2</b>	<b>8.1</b>
Manufacture of Furniture	13.868	6.7	9.0	8.4	8.5	8.7	8.8	8.3	8.4	8.0	7.4	7.2	7.2	8.1

**Table2c: Monthly Changes in Producer Price Index- Manufacturing (Local Market) June 2017 to June 2018**

Base period: July 2009 to June 2010=100

Industry Group	Weight	Jun-17	Jul-17	Aug-17	Sep-17	Oct-17	Nov-17	Dec-17	Jan-18	Feb-18	Mar-18	Apr-18	May-18	Jun-18
<b>PPI-M LOCAL</b>	<b>738.598</b>	<b>-0.9</b>	<b>1.5</b>	<b>0.6</b>	<b>0.2</b>	<b>-1.2</b>	<b>-0.4</b>	<b>-0.7</b>	<b>-0.8</b>	<b>0.1</b>	<b>0.2</b>	<b>0.4</b>	<b>0.2</b>	<b>0.9</b>
MANUFACTURE OF FOOD PRODUCTS	257.790	-1.2	2.3	0.7	0.2	-1.4	-0.9	-2.2	-1.9	-1.2	-0.2	0.5	0.4	1.3
MANUFACTURE OF BEVERAGES	71.418	0.2	-1.3	0.1	0.1	0.0	0.2	-0.1	0.6	0.0	-0.2	0.0	0.0	0.1
MANUFACTURE OF TOBACCO PRODUCTS	10.587	-0.3	3.2	0.0	-0.1	0.4	0.0	-0.1	0.2	0.0	0.2	0.3	0.3	1.0
MANUFACTURE OF TEXTILES	19.225	0.0	-1.5	0.0	0.0	-3.8	0.0	0.0	0.0	3.2	0.0	0.0	0.0	2.3
MANUFACTURE OF WEARING APPAREL	55.243	0.0	2.5	0.0	0.3	-1.0	0.0	0.0	-0.1	1.3	0.3	0.0	0.0	0.6
MANUFACTURE OF LEATHER & RELATED PRODUCTS	4.073	0.0	-2.6	0.0	-1.5	1.5	0.0	0.0	3.4	0.0	0.0	0.0	0.0	0.0
MANUFACTURE OF WOOD AND PRODUCTS OF WOOD, CORK, EXCEPT FURNITURE	7.316	-0.2	0.7	0.0	0.0	0.2	-0.7	-1.9	-2.5	-1.0	0.3	1.3	0.1	1.4
MANUFACTURE OF PAPER & PAPER PRODUCTS	12.134	-0.3	1.2	2.1	-0.3	1.7	-0.1	0.8	-0.7	1.4	0.0	1.3	0.1	0.6
PRINTING AND REPRODUCTION OF RECORDED MEDIA	25.329	-0.2	-0.4	0.0	-0.2	0.0	-0.3	1.1	-3.2	1.7	0.0	0.1	0.4	1.1
MANUFACTURE OF CHEMICALS & CHEMICAL PRODUCTS	64.540	-3.1	3.8	2.0	-0.1	-2.0	0.0	0.4	-1.5	0.5	1.7	1.5	0.0	-0.1
MANUFACTURE OF PHARMACEUTICALS, MEDICINAL CHEMICAL & BOTANICAL PRODUCTS	20.817	-4.2	-0.2	0.3	-0.2	0.3	0.0	2.8	1.4	5.4	0.1	-0.1	0.2	1.5
MANUFACTURE OF RUBBER & PLASTIC PRODUCTS	22.947	0.0	-0.1	0.0	0.2	-1.2	0.0	-1.2	0.0	0.5	0.1	1.9	0.0	0.3
MANUFACTURE OF OTHER NON-METALLIC MINERAL PRODUCTS	112.706	-0.6	-0.9	0.0	0.1	-2.2	0.0	0.0	0.6	1.0	0.6	0.5	0.2	0.2
MANUFACTURE OF BASIC METALS	14.534	-0.1	0.6	4.8	2.9	2.9	1.1	7.3	3.8	-3.6	2.1	1.2	-0.5	0.6
MANUFACTURE OF FABRICATED METAL PRODUCTS, EXCEPT MACHINERY AND EQUIPMENT	10.831	-0.1	4.5	1.9	3.2	0.4	0.4	0.2	1.8	-1.6	1.2	-1.6	0.2	2.6
MANUFACTURE OF ELECTRICAL EQUIPMENT	15.239	-0.1	0.0	0.0	-3.5	0.1	3.8	0.0	0.0	3.4	0.0	0.8	0.1	0.2
MANUFACTURE OF FURNITURE	13.868	0.0	1.4	-0.1	0.6	0.4	0.7	2.1	0.1	0.9	0.1	0.8	0.0	0.8

Table 2c-Continued

Industry Group	Weight	Jun-17	Jul-17	Aug-17	Sep-17	Oct-17	Nov-17	Dec-17	Jan-18	Feb-18	Mar-18	Apr-18	May-18	Jun-18
<b>MANUFACTURE OF FOOD PRODUCTS</b>	<b>257.790</b>	<b>-1.2</b>	<b>2.3</b>	<b>0.7</b>	<b>0.2</b>	<b>-1.4</b>	<b>-0.9</b>	<b>-2.2</b>	<b>-1.9</b>	<b>-1.2</b>	<b>-0.2</b>	<b>0.5</b>	<b>0.4</b>	<b>1.3</b>
Processing and Preserving of meat	8.219	0.0	0.0	0.0	0.0	0.0	0.0	0.0	7.3	0.0	0.1	0.5	0.0	0.0
Manufacture of Vegetable and Animal Oils and Fats	57.955	-0.9	3.1	0.1	0.1	-2.8	0.1	-0.6	-4.0	-0.5	0.7	0.7	0.0	0.9
Manufacture of Dairy Products	5.625	0.0	12.7	0.0	1.5	0.0	0.0	0.0	0.0	0.0	0.0	0.0	0.0	0.0
Manufacture of Grain Milling products	82.113	1.4	5.5	2.4	0.2	-1.3	-0.5	-4.9	-1.7	-3.8	-0.2	-0.4	0.5	3.5
Manufacture of Bakery products	25.197	0.0	1.5	1.0	1.1	0.0	0.1	0.3	1.1	1.1	0.0	0.0	0.0	0.0
Manufacture of Sugar	41.587	0.0	-0.1	-0.4	0.4	-2.1	-6.3	-7.6	-9.5	-4.5	-5.4	5.6	4.0	3.4
Coffee Processing	12.539	0.0	2.4	0.0	0.0	0.0	0.0	0.0	-0.1	0.0	0.0	0.0	0.0	0.0
Tea Processing	11.654	0.3	0.4	3.0	0.9	0.0	0.1	-1.4	-1.0	3.0	-0.2	0.2	-0.8	-0.4
Manufacture of Prepared Animal Feeds	12.901	-8.7	-1.2	0.0	0.1	0.0	0.0	0.0	0.0	0.0	0.0	0.0	0.0	0.0
<b>MANUFACTURE OF BEVERAGES</b>	<b>71.418</b>	<b>0.2</b>	<b>-1.3</b>	<b>0.1</b>	<b>0.1</b>	<b>0.0</b>	<b>0.2</b>	<b>-0.1</b>	<b>0.6</b>	<b>0.0</b>	<b>-0.2</b>	<b>0.0</b>	<b>0.0</b>	<b>0.1</b>
Distilling, rectifying and blending of spirits	2.606	4.6	1.2	2.5	0.4	-0.2	0.4	-1.4	-0.9	0.8	-2.8	0.4	0.0	1.3
Manufacture of Malt Liquors and Malt	32.174	0.0	0.0	0.0	0.0	0.0	0.0	0.0	0.0	0.0	0.0	0.0	0.0	0.0
Manufacture of Soft Drinks, Production of Mineral waters and Other bottled waters	36.638	0.0	-3.1	0.0	0.1	0.0	0.4	0.0	1.6	0.0	0.0	0.0	0.0	0.2
<b>MANUFACTURE OF TOBACCO PRODUCTS</b>	<b>10.587</b>	<b>-0.3</b>	<b>3.2</b>	<b>0.0</b>	<b>-0.1</b>	<b>0.4</b>	<b>0.0</b>	<b>-0.1</b>	<b>0.2</b>	<b>0.0</b>	<b>0.2</b>	<b>0.3</b>	<b>0.3</b>	<b>1.0</b>
Manufacture of Tobacco Products	10.587	-0.3	3.2	0.0	-0.1	0.4	0.0	-0.1	0.2	0.0	0.2	0.3	0.3	1.0
<b>MANUFACTURE OF TEXTILES</b>	<b>19.225</b>	<b>0.0</b>	<b>-1.5</b>	<b>0.0</b>	<b>0.0</b>	<b>-3.8</b>	<b>0.0</b>	<b>0.0</b>	<b>0.0</b>	<b>3.2</b>	<b>0.0</b>	<b>0.0</b>	<b>0.0</b>	<b>2.3</b>
Manufacture of made-up textile articles, except apparel	19.225	0.0	-1.5	0.0	0.0	-3.8	0.0	0.0	0.0	3.2	0.0	0.0	0.0	2.3



Table 2c-Continued

Industry Group	Weight	Jun-17	Jul-17	Aug-17	Sep-17	Oct-17	Nov-17	Dec-17	Jan-18	Feb-18	Mar-18	Apr-18	May-18	Jun-18
<b>MANUFACTURE OF WEARING APPAREL</b>	<b>55.243</b>	<b>0.0</b>	<b>2.5</b>	<b>0.0</b>	<b>0.3</b>	<b>-1.0</b>	<b>0.0</b>	<b>0.0</b>	<b>-0.1</b>	<b>1.3</b>	<b>0.3</b>	<b>0.0</b>	<b>0.0</b>	<b>0.6</b>
Manufacture of wearing apparel, except fur apparel	55.243	0.0	2.5	0.0	0.3	-1.0	0.0	0.0	-0.1	1.3	0.3	0.0	0.0	0.6
<b>MANUFACTURE OF LEATHER &amp; RELATED PRODUCTS</b>	<b>4.073</b>	<b>0.0</b>	<b>-2.6</b>	<b>0.0</b>	<b>-1.5</b>	<b>1.5</b>	<b>0.0</b>	<b>0.0</b>	<b>3.4</b>	<b>0.0</b>	<b>0.0</b>	<b>0.0</b>	<b>0.0</b>	<b>0.0</b>
Manufacture of footwear	4.073	0.0	-2.6	0.0	-1.5	1.5	0.0	0.0	3.4	0.0	0.0	0.0	0.0	0.0
<b>MANUFACTURE OF WOOD AND PRODUCTS OF WOOD, CORK, EXCEPT FURNITURE</b>	<b>7.316</b>	<b>-0.2</b>	<b>0.7</b>	<b>0.0</b>	<b>0.0</b>	<b>0.2</b>	<b>-0.7</b>	<b>-1.9</b>	<b>-2.5</b>	<b>-1.0</b>	<b>0.3</b>	<b>1.3</b>	<b>0.1</b>	<b>1.4</b>
Manufacture of Builders' Carpentry & Joinery	7.316	-0.2	0.7	0.0	0.0	0.2	-0.7	-1.9	-2.5	-1.0	0.3	1.3	0.1	1.4
<b>MANUFACTURE OF PAPER &amp; PAPER PRODUCTS</b>	<b>12.134</b>	<b>-0.3</b>	<b>1.2</b>	<b>2.1</b>	<b>-0.3</b>	<b>1.7</b>	<b>-0.1</b>	<b>0.8</b>	<b>-0.7</b>	<b>1.4</b>	<b>0.0</b>	<b>1.3</b>	<b>0.1</b>	<b>0.6</b>
Manufacture of pulp, paper and paperboard	5.344	0.0	1.2	0.0	-0.9	0.0	-0.2	1.7	-0.5	2.8	0.0	0.4	0.1	0.1
Manufacture of corrugated paper and paperboard and of containers of paper and paperboard	2.931	0.0	2.6	8.2	0.0	5.9	0.0	0.0	-1.9	0.9	0.0	0.0	0.0	0.0
Manufacture of other articles of paper and paperboard	3.860	-0.9	0.2	0.0	0.0	-0.4	0.0	0.5	0.4	0.0	0.1	3.9	0.1	1.7
<b>PRINTING AND REPRODUCTION OF RECORDED MEDIA</b>	<b>25.329</b>	<b>-0.2</b>	<b>-0.4</b>	<b>0.0</b>	<b>-0.2</b>	<b>0.0</b>	<b>-0.3</b>	<b>1.1</b>	<b>-3.2</b>	<b>1.7</b>	<b>0.0</b>	<b>0.1</b>	<b>0.4</b>	<b>1.1</b>
Printing	25.329	-0.2	-0.4	0.0	-0.2	0.0	-0.3	1.1	-3.2	1.7	0.0	0.1	0.4	1.1
<b>MANUFACTURE OF CHEMICALS &amp; CHEMICAL PRODUCTS</b>	<b>64.540</b>	<b>-3.1</b>	<b>3.8</b>	<b>2.0</b>	<b>-0.1</b>	<b>-2.0</b>	<b>0.0</b>	<b>0.4</b>	<b>-1.5</b>	<b>0.5</b>	<b>1.7</b>	<b>1.5</b>	<b>0.0</b>	<b>-0.1</b>
Manufacture of paints, varnishes and similar coatings, printing ink and mastics	10.065	0.0	0.0	0.0	0.0	0.3	0.0	0.0	0.4	0.6	0.0	4.5	0.0	1.0
Manufacture of Soap, Detergents, cleaning and Polishing preparations	42.019	-3.8	4.2	2.8	-0.2	-2.8	0.0	0.6	-2.2	0.6	2.3	0.9	0.0	-0.5
Manufacture of Other chemical Products n.e.c	12.456	-2.5	5.7	0.2	0.0	0.1	0.0	0.0	0.0	0.0	0.0	1.6	0.0	0.7

Table 2c-Continued

Industry Group	Weight	Jun-17	Jul-17	Aug-17	Sep-17	Oct-17	Nov-17	Dec-17	Jan-18	Feb-18	Mar-18	Apr-18	May-18	Jun-18
<b>MANUFACTURE OF PHARMACEUTICALS, MEDICINAL CHEMICAL &amp; BOTANICAL PRODUCTS</b>	<b>20.817</b>	<b>-4.2</b>	<b>-0.2</b>	<b>0.3</b>	<b>-0.2</b>	<b>0.3</b>	<b>0.0</b>	<b>2.8</b>	<b>1.4</b>	<b>5.4</b>	<b>0.1</b>	<b>-0.1</b>	<b>0.2</b>	<b>1.5</b>
Manufacture of Pharmaceuticals, medicinal chemical and botanical products	20.817	-4.2	-0.2	0.3	-0.2	0.3	0.0	2.8	1.4	5.4	0.1	-0.1	0.2	1.5
<b>MANUFACTURE OF RUBBER &amp; PLASTIC PRODUCTS</b>	<b>22.947</b>	<b>0.0</b>	<b>-0.1</b>	<b>0.0</b>	<b>0.2</b>	<b>-1.2</b>	<b>0.0</b>	<b>-1.2</b>	<b>0.0</b>	<b>0.5</b>	<b>0.1</b>	<b>1.9</b>	<b>0.0</b>	<b>0.3</b>
Manufacture of Plastic products	22.947	0.0	-0.1	0.0	0.2	-1.2	0.0	-1.2	0.0	0.5	0.1	1.9	0.0	0.3
<b>MANUFACTURE OF OTHER NON-METALLIC MINERAL PRODUCTS</b>	<b>112.706</b>	<b>-0.6</b>	<b>-0.9</b>	<b>0.0</b>	<b>0.1</b>	<b>-2.2</b>	<b>0.0</b>	<b>0.0</b>	<b>0.6</b>	<b>1.0</b>	<b>0.6</b>	<b>0.5</b>	<b>0.2</b>	<b>0.2</b>
Manufacture of Clay Building Materials	58.241	0.1	0.4	0.0	0.3	-0.9	0.0	0.0	0.0	1.0	0.0	0.0	0.8	0.0
Manufacture of Cement, Lime and Plaster	35.277	-1.8	1.6	0.0	0.0	-4.0	0.0	0.0	1.3	1.2	1.1	1.2	0.0	0.6
Manufacture of Articles of Concrete, cement and plaster	19.188	0.0	-7.4	0.0	0.1	-1.4	0.0	-0.1	0.7	0.7	0.9	0.4	-0.6	0.1
<b>MANUFACTURE OF BASIC METALS</b>	<b>14.534</b>	<b>-0.1</b>	<b>0.6</b>	<b>4.8</b>	<b>2.9</b>	<b>2.9</b>	<b>1.1</b>	<b>7.3</b>	<b>3.8</b>	<b>-3.6</b>	<b>2.1</b>	<b>1.2</b>	<b>-0.5</b>	<b>0.6</b>
Manufacture of basic iron and steel	14.534	-0.1	0.6	4.8	2.9	2.9	1.1	7.3	3.8	-3.6	2.1	1.2	-0.5	0.6
<b>MANUFACTURE OF FABRICATED METAL PRODUCTS, EXCEPT MACHINERY AND EQUIPMENT</b>	<b>10.831</b>	<b>-0.1</b>	<b>4.5</b>	<b>1.9</b>	<b>3.2</b>	<b>0.4</b>	<b>0.4</b>	<b>0.2</b>	<b>1.8</b>	<b>-1.6</b>	<b>1.2</b>	<b>-1.6</b>	<b>0.2</b>	<b>2.6</b>
Manufacture of Other Fabricated Metals n.e.c	10.831	-0.1	4.5	1.9	3.2	0.4	0.4	0.2	1.8	-1.6	1.2	-1.6	0.2	2.6
<b>MANUFACTURE OF ELECTRICAL EQUIPMENT</b>	<b>15.239</b>	<b>-0.1</b>	<b>0.0</b>	<b>0.0</b>	<b>-3.5</b>	<b>0.1</b>	<b>3.8</b>	<b>0.0</b>	<b>0.0</b>	<b>3.4</b>	<b>0.0</b>	<b>0.8</b>	<b>0.1</b>	<b>0.2</b>
Manufacture of batteries and accumulators	4.384	0.0	0.0	0.0	0.0	0.0	0.0	0.0	0.0	9.0	0.0	0.0	0.0	0.0
Manufacture of other electronic and electric wires and cables	10.856	-0.1	0.0	0.0	-5.6	0.1	6.2	-0.1	0.1	0.0	0.1	1.4	0.1	0.4
<b>MANUFACTURE OF FURNITURE</b>	<b>13.868</b>	<b>0.0</b>	<b>1.4</b>	<b>-0.1</b>	<b>0.6</b>	<b>0.4</b>	<b>0.7</b>	<b>2.1</b>	<b>0.1</b>	<b>0.9</b>	<b>0.1</b>	<b>0.8</b>	<b>0.0</b>	<b>0.8</b>
Manufacture of Furniture	13.868	0.0	1.4	-0.1	0.6	0.4	0.7	2.1	0.1	0.9	0.1	0.8	0.0	0.8

**Table3a: Monthly Producer Price Index - Manufacturing (Export Market) June 2107 to June 2018**

Base period: July 2009 to June 2010=100

Industry Group	Weight	Jun-17	Jul-17	Aug-17	Sep-17	Oct-17	Nov-17	Dec-17	Jan-18	Feb-18	Mar-18	Apr-18	May-18	Jun-18
<b>PPI-M EXPORT</b>	<b>182.802</b>	<b>221.49</b>	<b>225.06</b>	<b>227.62</b>	<b>225.65</b>	<b>230.80</b>	<b>226.71</b>	<b>225.15</b>	<b>225.10</b>	<b>223.34</b>	<b>228.27</b>	<b>223.69</b>	<b>219.84</b>	<b>224.01</b>
MANUFACTURE OF FOOD PRODUCTS	107.169	235.73	236.56	242.15	240.26	247.03	240.66	236.71	240.00	238.39	243.28	235.96	229.90	234.70
MANUFACTURE OF BEVERAGES	6.090	256.68	302.88	303.26	302.74	305.94	306.02	304.71	262.56	262.38	264.01	266.69	268.82	277.02
MANUFACTURE OF TOBACCO PRODUCTS	14.756	139.00	131.26	131.42	131.20	132.58	132.62	132.05	132.66	132.57	133.39	134.75	135.82	139.97
MANUFACTURE OF LEATHER & RELATED PRODUCTS	11.844	213.18	233.83	215.32	203.32	205.23	207.84	224.21	216.69	206.64	230.82	223.43	219.06	206.12
MANUFACTURE OF PAPER & PAPER PRODUCTS	3.724	268.09	269.47	270.30	271.51	275.17	275.14	280.95	282.55	281.56	283.14	286.90	288.29	305.00
MANUFACTURE OF CHEMICALS & CHEMICAL PRODUCTS	7.947	230.33	212.51	212.77	212.41	214.65	214.71	213.79	220.76	220.61	221.98	226.12	227.93	234.88
MANUFACTURE OF PHARMACEUTICALS, MEDICINAL CHEMICAL & BOTANICAL PRODUCTS	2.919	223.90	224.55	224.83	224.45	226.82	226.88	225.90	226.95	226.79	228.20	230.52	232.36	239.45
MANUFACTURE OF RUBBER & PLASTIC PRODUCTS	3.508	194.70	194.70	194.70	194.70	194.70	194.70	194.70	202.93	202.93	202.93	202.93	202.93	202.93
MANUFACTURE OF OTHER NON-METALLIC MINERAL PRODUCTS	24.844	155.93	156.38	156.57	156.31	157.96	158.00	157.32	158.05	157.94	158.92	160.53	161.82	166.75
<b>MANUFACTURE OF FOOD PRODUCTS</b>	<b>107.169</b>	<b>235.73</b>	<b>236.56</b>	<b>242.15</b>	<b>240.26</b>	<b>247.03</b>	<b>240.66</b>	<b>236.71</b>	<b>240.00</b>	<b>238.39</b>	<b>243.28</b>	<b>235.96</b>	<b>229.90</b>	<b>234.70</b>
Processing & Preserving of Fish, Crustaceans and Molluscs	19.899	309.97	311.93	320.59	316.24	334.03	317.82	303.53	312.59	315.35	338.07	307.22	287.02	287.01
Manufacture of Vegetable and Animal Oils and Fats	21.466	232.00	232.67	232.96	232.56	235.02	235.08	234.07	235.16	235.00	236.46	238.85	240.77	239.50
Manufacture of Sugar	15.058	241.38	242.08	242.39	241.97	244.53	244.59	243.54	244.67	232.76	234.21	236.58	240.52	275.70
Coffee Processing	33.812	199.40	198.06	208.11	204.19	204.36	200.13	207.35	207.79	203.36	187.62	198.75	196.43	191.60
Tea Processing	16.934	152.52	157.68	164.88	173.10	174.87	171.99	158.80	158.98	164.78	165.59	162.22	153.44	150.64
<b>MANUFACTURE OF BEVERAGES</b>	<b>6.090</b>	<b>256.68</b>	<b>302.88</b>	<b>303.26</b>	<b>302.74</b>	<b>305.94</b>	<b>306.02</b>	<b>304.71</b>	<b>262.56</b>	<b>262.38</b>	<b>264.01</b>	<b>266.69</b>	<b>268.82</b>	<b>277.02</b>
Manufacture of Soft Drinks, Production of Mineral waters and Other bottled waters	6.090	256.68	302.88	303.26	302.74	305.94	306.02	304.71	262.56	262.38	264.01	266.69	268.82	277.02
<b>MANUFACTURE OF TOBACCO PRODUCTS</b>	<b>14.756</b>	<b>139.00</b>	<b>131.26</b>	<b>131.42</b>	<b>131.20</b>	<b>132.58</b>	<b>132.62</b>	<b>132.05</b>	<b>132.66</b>	<b>132.57</b>	<b>133.39</b>	<b>134.75</b>	<b>135.82</b>	<b>139.97</b>
Manufacture of Tobacco Products	14.756	139.00	131.26	131.42	131.20	132.58	132.62	132.05	132.66	132.57	133.39	134.75	135.82	139.97

Table 3a- *Continued*

Industry Group	Weight	Jun-17	Jul-17	Aug-17	Sep-17	Oct-17	Nov-17	Dec-17	Jan-18	Feb-18	Mar-18	Apr-18	May-18	Jun-18
<b>MANUFACTURE OF LEATHER &amp; RELATED PRODUCTS</b>	<b>11.844</b>	<b>213.18</b>	<b>233.83</b>	<b>215.32</b>	<b>203.32</b>	<b>205.23</b>	<b>207.84</b>	<b>224.21</b>	<b>216.69</b>	<b>206.64</b>	<b>230.82</b>	<b>223.43</b>	<b>219.06</b>	<b>206.12</b>
Tanning and dressing of leather; dressing and dyeing of fur	11.844	213.18	233.83	215.32	203.32	205.23	207.84	224.21	216.69	206.64	230.82	223.43	219.06	206.12
<b>MANUFACTURE OF PAPER &amp; PAPER PRODUCTS</b>	<b>3.724</b>	<b>268.09</b>	<b>269.47</b>	<b>270.30</b>	<b>271.51</b>	<b>275.17</b>	<b>275.14</b>	<b>280.95</b>	<b>282.55</b>	<b>281.56</b>	<b>283.14</b>	<b>286.90</b>	<b>288.29</b>	<b>305.00</b>
Manufacture of pulp, Paper & Paperboard	3.724	268.09	269.47	270.30	271.51	275.17	275.14	280.95	282.55	281.56	283.14	286.90	288.29	305.00
<b>MANUFACTURE OF CHEMICALS &amp; CHEMICAL PRODUCTS</b>	<b>7.947</b>	<b>230.33</b>	<b>212.51</b>	<b>212.77</b>	<b>212.41</b>	<b>214.65</b>	<b>214.71</b>	<b>213.79</b>	<b>220.76</b>	<b>220.61</b>	<b>221.98</b>	<b>226.12</b>	<b>227.93</b>	<b>234.88</b>
Manufacture of Soap, Detergents, cleaning and Polishing preparations	7.947	230.33	212.51	212.77	212.41	214.65	214.71	213.79	220.76	220.61	221.98	226.12	227.93	234.88
<b>MANUFACTURE OF PHARMACEUTICALS, MEDICINAL CHEMICAL &amp; BOTANICAL PRODUCTS</b>	<b>2.919</b>	<b>223.90</b>	<b>224.55</b>	<b>224.83</b>	<b>224.45</b>	<b>226.82</b>	<b>226.88</b>	<b>225.90</b>	<b>226.95</b>	<b>226.79</b>	<b>228.20</b>	<b>230.52</b>	<b>232.36</b>	<b>239.45</b>
Manufacture of Pharmaceuticals, medicinal chemical and botanical products	2.919	223.90	224.55	224.83	224.45	226.82	226.88	225.90	226.95	226.79	228.20	230.52	232.36	239.45
<b>MANUFACTURE OF RUBBER &amp; PLASTIC PRODUCTS</b>	<b>3.508</b>	<b>194.70</b>	<b>194.70</b>	<b>194.70</b>	<b>194.70</b>	<b>194.70</b>	<b>194.70</b>	<b>194.70</b>	<b>202.93</b>	<b>202.93</b>	<b>202.93</b>	<b>202.93</b>	<b>202.93</b>	<b>202.93</b>
Manufacture of Plastic products	3.508	194.70	194.70	194.70	194.70	194.70	194.70	194.70	202.93	202.93	202.93	202.93	202.93	202.93
<b>MANUFACTURE OF OTHER NON-METALLIC MINERAL PRODUCTS</b>	<b>24.844</b>	<b>155.93</b>	<b>156.38</b>	<b>156.57</b>	<b>156.31</b>	<b>157.96</b>	<b>158.00</b>	<b>157.32</b>	<b>158.05</b>	<b>157.94</b>	<b>158.92</b>	<b>160.53</b>	<b>161.82</b>	<b>166.75</b>
Manufacture of Cement, Lime and Plaster	24.844	155.93	156.38	156.57	156.31	157.96	158.00	157.32	158.05	157.94	158.92	160.53	161.82	166.75

**Table 3b: Annual Changes in Price Index -Manufacturing (Export Market) June 2017 to June 2018**

Base period: July 2009 to June 2010=100

Industry Group	Weight	Jun-17	Jul-17	Aug-17	Sep-17	Oct-17	Nov-17	Dec-17	Jan-18	Feb-18	Mar-18	Apr-18	May-18	Jun-18
<b>PPI-M EXPORT</b>	<b>182.802</b>	<b>6.8</b>	<b>6.2</b>	<b>7.8</b>	<b>5.1</b>	<b>6.7</b>	<b>2.2</b>	<b>-0.7</b>	<b>-0.9</b>	<b>-2.0</b>	<b>-0.1</b>	<b>0.6</b>	<b>-1.9</b>	<b>1.1</b>
MANUFACTURE OF FOOD PRODUCTS	107.169	8.4	5.3	8.3	5.2	7.2	1.8	-2.4	-1.4	-2.9	-1.2	-0.4	-3.3	-0.4
MANUFACTURE OF BEVERAGES	6.090	6.6	25.5	25.8	25.3	24.6	20.2	18.5	1.8	2.4	2.6	3.1	3.8	7.9
MANUFACTURE OF TOBACCO PRODUCTS	14.756	6.6	0.4	0.6	0.2	-0.3	-3.8	-5.2	-5.0	-4.5	-4.2	-3.8	-3.2	0.7
MANUFACTURE OF LEATHER & RELATED PRODUCTS	11.844	-0.3	10.5	1.5	-5.2	-2.0	-0.5	6.9	5.5	-2.7	8.9	6.7	-3.7	-3.3
MANUFACTURE OF PAPER & PAPER PRODUCTS	3.724	3.2	2.3	4.8	4.9	5.9	3.3	4.0	4.2	5.5	5.4	6.2	6.6	13.8
MANUFACTURE OF CHEMICALS & CHEMICAL PRODUCTS	7.947	0.5	-6.6	-6.4	-6.8	-7.3	-10.6	-11.9	-9.3	-2.7	-3.5	-2.2	-1.5	2.0
MANUFACTURE OF PHARMACEUTICALS, MEDICINAL CHEMICAL & BOTANICAL PRODUCTS	2.919	7.2	7.2	6.9	6.5	5.9	2.2	0.7	0.8	1.5	1.7	2.2	2.8	6.9
MANUFACTURE OF RUBBER & PLASTIC PRODUCTS	3.508	2.0	2.0	2.0	2.0	2.0	2.0	2.0	4.3	4.3	4.3	4.2	4.2	4.2
MANUFACTURE OF OTHER NON-METALLIC MINERAL PRODUCTS	24.844	6.6	6.7	6.9	6.5	5.9	2.2	0.7	0.8	1.5	1.7	2.2	2.8	6.9
<b>MANUFACTURE OF FOOD PRODUCTS</b>	<b>107.169</b>	<b>8.4</b>	<b>5.3</b>	<b>8.3</b>	<b>5.2</b>	<b>7.2</b>	<b>1.8</b>	<b>-2.4</b>	<b>-1.4</b>	<b>-2.9</b>	<b>-1.2</b>	<b>-0.4</b>	<b>-3.3</b>	<b>-0.4</b>
Processing & Preserving of Fish, Crustaceans and Molluscs	19.899	19.9	11.6	21.4	12.5	19.7	11.3	6.8	2.7	0.5	6.5	-0.6	-7.4	-7.4
Manufacture of Vegetable and Animal Oils and Fats	21.466	-5.2	-5.1	-8.3	-8.6	-5.6	-7.9	-10.6	-10.4	-10.0	-9.7	2.2	2.8	3.2
Manufacture of Sugar	15.058	6.7	6.7	6.9	6.5	5.9	2.2	0.7	0.8	-3.4	-3.2	-2.7	-1.3	14.2
Coffee Processing	33.812	5.8	3.1	6.0	3.9	-2.5	-6.5	-10.3	-2.2	-3.8	-9.9	-2.6	-4.4	-3.9
Tea Processing	16.934	29.7	25.1	31.0	39.1	44.9	33.0	24.6	20.8	21.3	22.0	13.2	2.3	-1.2
<b>MANUFACTURE OF BEVERAGES</b>	<b>6.090</b>	<b>6.6</b>	<b>25.5</b>	<b>25.8</b>	<b>25.3</b>	<b>24.6</b>	<b>20.2</b>	<b>18.5</b>	<b>1.8</b>	<b>2.4</b>	<b>2.6</b>	<b>3.1</b>	<b>3.8</b>	<b>7.9</b>
Manufacture of Soft Drinks, Production of Mineral waters and Other bottled waters	6.090	6.6	25.5	25.8	25.3	24.6	20.2	18.5	1.8	2.4	2.6	3.1	3.8	7.9
<b>MANUFACTURE OF TOBACCO PRODUCTS</b>	<b>14.756</b>	<b>6.6</b>	<b>0.4</b>	<b>0.6</b>	<b>0.2</b>	<b>-0.3</b>	<b>-3.8</b>	<b>-5.2</b>	<b>-5.0</b>	<b>-4.5</b>	<b>-4.2</b>	<b>-3.8</b>	<b>-3.2</b>	<b>0.7</b>
Manufacture of Tobacco Products	14.756	6.6	0.4	0.6	0.2	-0.3	-3.8	-5.2	-5.0	-4.5	-4.2	-3.8	-3.2	0.7

Table 3b-Continued

Industry Group	Weight	Jun-17	Jul-17	Aug-17	Sep-17	Oct-17	Nov-17	Dec-17	Jan-18	Feb-18	Mar-18	Apr-18	May-18	Jun-18
<b>MANUFACTURE OF LEATHER &amp; RELATED PRODUCTS</b>	<b>11.844</b>	<b>-0.3</b>	<b>10.5</b>	<b>1.5</b>	<b>-5.2</b>	<b>-2.0</b>	<b>-0.5</b>	<b>6.9</b>	<b>5.5</b>	<b>-2.7</b>	<b>8.9</b>	<b>6.7</b>	<b>-3.7</b>	<b>-3.3</b>
Tanning and dressing of leather; dressing and dyeing of fur	11.844	-0.3	10.5	1.5	-5.2	-2.0	-0.5	6.9	5.5	-2.7	8.9	6.7	-3.7	-3.3
<b>MANUFACTURE OF PAPER &amp; PAPER PRODUCTS</b>	<b>3.724</b>	<b>3.2</b>	<b>2.3</b>	<b>4.8</b>	<b>4.9</b>	<b>5.9</b>	<b>3.3</b>	<b>4.0</b>	<b>4.2</b>	<b>5.5</b>	<b>5.4</b>	<b>6.2</b>	<b>6.6</b>	<b>13.8</b>
Manufacture of pulp, Paper & Paperboard	3.724	3.2	2.3	4.8	4.9	5.9	3.3	4.0	4.2	5.5	5.4	6.2	6.6	13.8
<b>MANUFACTURE OF CHEMICALS &amp; CHEMICAL PRODUCTS</b>	<b>7.947</b>	<b>0.5</b>	<b>-6.6</b>	<b>-6.4</b>	<b>-6.8</b>	<b>-7.3</b>	<b>-10.6</b>	<b>-11.9</b>	<b>-9.3</b>	<b>-2.7</b>	<b>-3.5</b>	<b>-2.2</b>	<b>-1.5</b>	<b>2.0</b>
Manufacture of Soap, Detergents, cleaning and Polishing preparations	7.947	0.5	-6.6	-6.4	-6.8	-7.3	-10.6	-11.9	-9.3	-2.7	-3.5	-2.2	-1.5	2.0
<b>MANUFACTURE OF PHARMACEUTICALS, MEDICINAL CHEMICAL &amp; BOTANICAL PRODUCTS</b>	<b>2.919</b>	<b>7.2</b>	<b>7.2</b>	<b>6.9</b>	<b>6.5</b>	<b>5.9</b>	<b>2.2</b>	<b>0.7</b>	<b>0.8</b>	<b>1.5</b>	<b>1.7</b>	<b>2.2</b>	<b>2.8</b>	<b>6.9</b>
Manufacture of Pharmaceuticals, medicinal chemical and botanical products	2.919	7.2	7.2	6.9	6.5	5.9	2.2	0.7	0.8	1.5	1.7	2.2	2.8	6.9
<b>MANUFACTURE OF RUBBER &amp; PLASTIC PRODUCTS</b>	<b>3.508</b>	<b>2.0</b>	<b>2.0</b>	<b>2.0</b>	<b>2.0</b>	<b>2.0</b>	<b>2.0</b>	<b>2.0</b>	<b>4.3</b>	<b>4.3</b>	<b>4.3</b>	<b>4.2</b>	<b>4.2</b>	<b>4.2</b>
Manufacture of Plastic products	3.508	2.0	2.0	2.0	2.0	2.0	2.0	2.0	4.3	4.3	4.3	4.2	4.2	4.2
<b>MANUFACTURE OF OTHER NON-METALLIC MINERAL PRODUCTS</b>	<b>24.844</b>	<b>6.6</b>	<b>6.7</b>	<b>6.9</b>	<b>6.5</b>	<b>5.9</b>	<b>2.2</b>	<b>0.7</b>	<b>0.8</b>	<b>1.5</b>	<b>1.7</b>	<b>2.2</b>	<b>2.8</b>	<b>6.9</b>
Manufacture of Cement, Lime and Plaster	24.844	6.6	6.7	6.9	6.5	5.9	2.2	0.7	0.8	1.5	1.7	2.2	2.8	6.9

**Table3c: Monthly Changes in Producer Price Index - Manufacturing (Export Market) June 2017 to June 2018**

Base period: July 2009 to June 2010=100

Industry Group	Weight	Jun-17	Jul-17	Aug-17	Sep-17	Oct-17	Nov-17	Dec-17	Jan-18	Feb-18	Mar-18	Apr-18	May-18	Jun-18
<b>PPI-M EXPORT</b>	<b>182.802</b>	<b>-1.2</b>	<b>1.6</b>	<b>1.1</b>	<b>-0.9</b>	<b>2.3</b>	<b>-1.8</b>	<b>-0.7</b>	<b>0.0</b>	<b>-0.8</b>	<b>2.2</b>	<b>-2.0</b>	<b>-1.7</b>	<b>1.9</b>
MANUFACTURE OF FOOD PRODUCTS	107.169	-0.9	0.4	2.4	-0.8	2.8	-2.6	-1.6	1.4	-0.7	2.1	-3.0	-2.6	2.1
MANUFACTURE OF BEVERAGES	6.090	-0.9	18.0	0.1	-0.2	1.1	0.0	-0.4	-13.8	-0.1	0.6	1.0	0.8	3.0
MANUFACTURE OF TOBACCO PRODUCTS	14.756	-0.9	-5.6	0.1	-0.2	1.1	0.0	-0.4	0.5	-0.1	0.6	1.0	0.8	3.0
MANUFACTURE OF LEATHER & RELATED PRODUCTS	11.844	-6.2	9.7	-7.9	-5.6	0.9	1.3	7.9	-3.4	-4.6	11.7	-3.2	-2.0	-5.9
MANUFACTURE OF PAPER & PAPER PRODUCTS	3.724	-0.9	0.5	0.3	0.4	1.3	0.0	2.1	0.6	-0.4	0.6	1.3	0.5	5.8
MANUFACTURE OF CHEMICALS & CHEMICAL PRODUCTS	7.947	-0.4	-7.7	0.1	-0.2	1.1	0.0	-0.4	3.3	-0.1	0.6	1.9	0.8	3.0
MANUFACTURE OF PHARMACEUTICALS, MEDICINAL CHEMICAL & BOTANICAL PRODUCTS	2.919	-0.9	0.3	0.1	-0.2	1.1	0.0	-0.4	0.5	-0.1	0.6	1.0	0.8	3.0
MANUFACTURE OF RUBBER & PLASTIC PRODUCTS	3.508	0.0	0.0	0.0	0.0	0.0	0.0	0.0	4.2	0.0	0.0	0.0	0.0	0.0
MANUFACTURE OF OTHER NON-METALLIC MINERAL PRODUCTS	24.844	-0.9	0.3	0.1	-0.2	1.1	0.0	-0.4	0.5	-0.1	0.6	1.0	0.8	3.0
<b>MANUFACTURE OF FOOD PRODUCTS</b>	<b>107.169</b>	<b>-0.9</b>	<b>0.4</b>	<b>2.4</b>	<b>-0.8</b>	<b>2.8</b>	<b>-2.6</b>	<b>-1.6</b>	<b>1.4</b>	<b>-0.7</b>	<b>2.1</b>	<b>-3.0</b>	<b>-2.6</b>	<b>2.1</b>
Processing & Preserving of Fish, Crustaceans and Molluscs	19.899	0.0	0.6	2.8	-1.4	5.6	-4.9	-4.5	3.0	0.9	7.2	-9.1	-6.6	0.0
Manufacture of Vegetable and Animal Oils and Fats	21.466	-0.9	0.3	0.1	-0.2	1.1	0.0	-0.4	0.5	-0.1	0.6	1.0	0.8	-0.5
Manufacture of Sugar	15.058	-0.9	0.3	0.1	-0.2	1.1	0.0	-0.4	0.5	-4.9	0.6	1.0	1.7	14.6
Coffee Processing	33.812	-3.0	-0.7	5.1	-1.9	0.1	-2.1	3.6	0.2	-2.1	-7.7	5.9	-1.2	-2.5
Tea Processing	16.934	1.7	3.4	4.6	5.0	1.0	-1.6	-7.7	0.1	3.6	0.5	-2.0	-5.4	-1.8
<b>MANUFACTURE OF BEVERAGES</b>	<b>6.090</b>	<b>-0.9</b>	<b>18.0</b>	<b>0.1</b>	<b>-0.2</b>	<b>1.1</b>	<b>0.0</b>	<b>-0.4</b>	<b>-13.8</b>	<b>-0.1</b>	<b>0.6</b>	<b>1.0</b>	<b>0.8</b>	<b>3.0</b>
Manufacture of Soft Drinks, Production of Mineral waters and Other bottled waters	6.090	-0.9	18.0	0.1	-0.2	1.1	0.0	-0.4	-13.8	-0.1	0.6	1.0	0.8	3.0
<b>MANUFACTURE OF TOBACCO PRODUCTS</b>	<b>14.756</b>	<b>-0.9</b>	<b>-5.6</b>	<b>0.1</b>	<b>-0.2</b>	<b>1.1</b>	<b>0.0</b>	<b>-0.4</b>	<b>0.5</b>	<b>-0.1</b>	<b>0.6</b>	<b>1.0</b>	<b>0.8</b>	<b>3.0</b>
Manufacture of Tobacco Products	14.756	-0.9	-5.6	0.1	-0.2	1.1	0.0	-0.4	0.5	-0.1	0.6	1.0	0.8	3.0

Table 3c-Continued

Industry Group	Weight	Jun-17	Jul-17	Aug-17	Sep-17	Oct-17	Nov-17	Dec-17	Jan-18	Feb-18	Mar-18	Apr-18	May-18	Jun-18
<b>MANUFACTURE OF LEATHER &amp; RELATED PRODUCTS</b>	<b>11.844</b>	<b>-6.2</b>	<b>9.7</b>	<b>-7.9</b>	<b>-5.6</b>	<b>0.9</b>	<b>1.3</b>	<b>7.9</b>	<b>-3.4</b>	<b>-4.6</b>	<b>11.7</b>	<b>-3.2</b>	<b>-2.0</b>	<b>-5.9</b>
Tanning and dressing of leather; dressing and dyeing of fur	11.844	-6.2	9.7	-7.9	-5.6	0.9	1.3	7.9	-3.4	-4.6	11.7	-3.2	-2.0	-5.9
<b>MANUFACTURE OF PAPER &amp; PAPER PRODUCTS</b>	<b>3.724</b>	<b>-0.9</b>	<b>0.5</b>	<b>0.3</b>	<b>0.4</b>	<b>1.3</b>	<b>0.0</b>	<b>2.1</b>	<b>0.6</b>	<b>-0.4</b>	<b>0.6</b>	<b>1.3</b>	<b>0.5</b>	<b>5.8</b>
Manufacture of pulp, Paper & Paperboard	3.724	-0.9	0.5	0.3	0.4	1.3	0.0	2.1	0.6	-0.4	0.6	1.3	0.5	5.8
<b>MANUFACTURE OF CHEMICALS &amp; CHEMICAL PRODUCTS</b>	<b>7.947</b>	<b>-0.4</b>	<b>-7.7</b>	<b>0.1</b>	<b>-0.2</b>	<b>1.1</b>	<b>0.0</b>	<b>-0.4</b>	<b>3.3</b>	<b>-0.1</b>	<b>0.6</b>	<b>1.9</b>	<b>0.8</b>	<b>3.0</b>
Manufacture of Soap, Detergents, cleaning and Polishing preparations	7.947	-0.4	-7.7	0.1	-0.2	1.1	0.0	-0.4	3.3	-0.1	0.6	1.9	0.8	3.0
<b>MANUFACTURE OF PHARMACEUTICALS, MEDICINAL CHEMICAL &amp; BOTANICAL PRODUCTS</b>	<b>2.919</b>	<b>-0.9</b>	<b>0.3</b>	<b>0.1</b>	<b>-0.2</b>	<b>1.1</b>	<b>0.0</b>	<b>-0.4</b>	<b>0.5</b>	<b>-0.1</b>	<b>0.6</b>	<b>1.0</b>	<b>0.8</b>	<b>3.0</b>
Manufacture of Pharmaceuticals, medicinal chemical and botanical products	2.919	-0.9	0.3	0.1	-0.2	1.1	0.0	-0.4	0.5	-0.1	0.6	1.0	0.8	3.0
<b>MANUFACTURE OF RUBBER &amp; PLASTIC PRODUCTS</b>	<b>3.508</b>	<b>0.0</b>	<b>0.0</b>	<b>0.0</b>	<b>0.0</b>	<b>0.0</b>	<b>0.0</b>	<b>0.0</b>	<b>4.2</b>	<b>0.0</b>	<b>0.0</b>	<b>0.0</b>	<b>0.0</b>	<b>0.0</b>
Manufacture of Plastic products	3.508	0.0	0.0	0.0	0.0	0.0	0.0	0.0	4.2	0.0	0.0	0.0	0.0	0.0
<b>MANUFACTURE OF OTHER NON-METALLIC MINERAL PRODUCTS</b>	<b>24.844</b>	<b>-0.9</b>	<b>0.3</b>	<b>0.1</b>	<b>-0.2</b>	<b>1.1</b>	<b>0.0</b>	<b>-0.4</b>	<b>0.5</b>	<b>-0.1</b>	<b>0.6</b>	<b>1.0</b>	<b>0.8</b>	<b>3.0</b>
Manufacture of Cement, Lime and Plaster	24.844	-0.9	0.3	0.1	-0.2	1.1	0.0	-0.4	0.5	-0.1	0.6	1.0	0.8	3.0