



STATISTICAL RELEASE

UGANDA BUREAU OF STATISTICS



Construction Sector Indices

July and August 2019

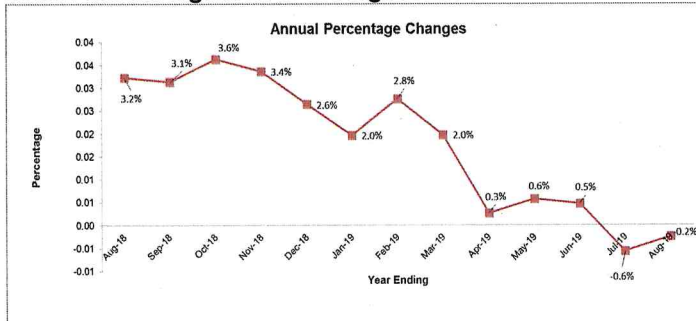
HIGHLIGHTS

Annual Changes:

Findings show that the average input prices for the Whole Construction Sector (covering material prices, wage rates & equipment hire rates) decreased by 0.2% for the year ending August 2019 compared to 3.2% increase for the year ended August 2018.

For the year ending July 2019, the sector registered a decrease in the input prices of 0.6% compared to 3.7% rise for the year ended July 2018.

Fig 1: Annual Price Changes at the Whole Construction Sector Index August 2018 to August 2019



The main contributors to the annual decrease in input prices of 0.2% were:

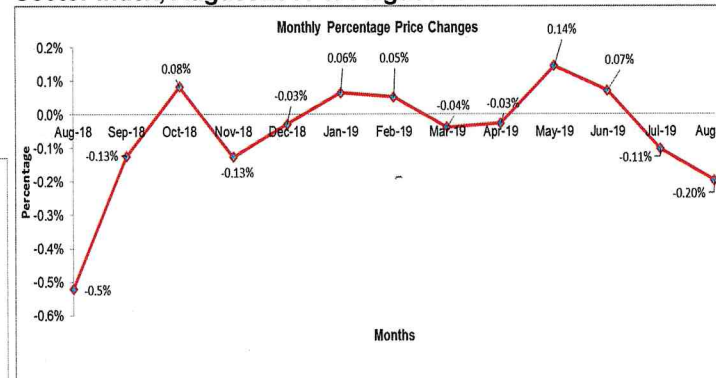
- A decrease of 0.2% in prices of inputs for Residential building, and 0.2% in Non-residential buildings.
- A decrease of 0.6% in prices of inputs for the Civil works sub sector.

Monthly Changes:

Findings show that in the month of August 2019, prices of inputs into the Whole Construction Sector decreased by 0.20% compared to a 0.11% decrease for the month ended July 2019 mainly due to;

- A decrease in prices of inputs into the sub sector of Buildings Residential by 0.19%, 0.15% decrease in the Non-residential Building sector and 0.35% in the Civil works sector.

Fig 2: Monthly Price Changes at the Whole Construction Sector Index, August 2018 to August 2019



Material Inputs (Basic Headings) - Monthly Changes

Overall, the prices of material inputs, equipment hire and wage rates decreased in August 2019 compared to July 2019. Notable decreases were registered in;

- Prices of Paint by 0.5%,
- Cement prices decreased by 0.8%.
- Roofing sheets decreased by 0.2% and
- Lime by 2.5%
- Diesel decreased by 0.81%

Chris N. Mukiza (PhD)
Executive Director

Thursday 26th September 2019

- Notes: 1 This release contains composite input price indices for the construction sector and their "basic heading" Components.
- 2 To obtain the percentage change in prices between any two periods, divide the index number in the second period by the index number in the first period, subtract 1 and multiply the result by 100.
- 3 **Some revisions have been made due to availability of more data initially imputed.**
4. Comments can be addressed to: Mr Peter Opio, Director, Business & Industry Statistics, Uganda Bureau of Statistics on email peter.opio@ubos.org & phone no: 0414 706016 or 0711 706017 (Mob).
The next release will be in the fourth week of October, 2019

Table 1: Percentage change since previous year

| Sector | Weights | Aug-18 | Sep-18 | Oct-18 | Nov-18 | Dec-18 | Jan-19 | Feb-19 | Mar-19 | Apr-19 | May-19 | Jun-19 | Jul-19 | Aug-19 |
|-----------------------|---------|--------|--------|--------|--------|--------|--------|--------|--------|--------|--------|--------|--------|--------|
| Whole sector | 100 | 3.2 | 3.1 | 3.6 | 3.4 | 2.6 | 2.0 | 2.8 | 2.1 | 0.3 | 0.6 | 0.5 | -0.6 | -0.2 |
| All buildings Total | 0 | 2.7 | 2.5 | 3.2 | 3.0 | 2.4 | 1.7 | 2.6 | 1.9 | 0.0 | 0.5 | 0.5 | -0.6 | -0.2 |
| Residential buildings | 30 | 2.8 | 2.5 | 3.3 | 3.1 | 2.1 | 1.1 | 2.3 | 1.3 | -1.1 | 0.0 | 0.3 | -0.7 | -0.2 |
| Formal | 15 | 2.2 | 1.8 | 2.2 | 1.9 | 1.5 | 0.5 | 1.4 | 0.5 | -0.4 | -0.3 | -0.5 | -0.9 | -0.4 |
| Own-account | 15 | 3.5 | 3.3 | 4.4 | 4.3 | 2.8 | 1.7 | 3.3 | 2.1 | -1.8 | 0.3 | 1.1 | -0.6 | 0.1 |
| Non-res buildings | 50 | 2.6 | 2.5 | 3.2 | 2.9 | 2.6 | 2.1 | 2.7 | 2.3 | 0.7 | 0.7 | 0.6 | -0.5 | -0.2 |
| Civil works | 20 | 5.8 | 5.7 | 5.3 | 4.9 | 3.4 | 2.8 | 3.5 | 2.6 | 1.3 | 1.0 | 0.4 | -0.5 | -0.6 |
| Roads paved | 10 | 5.7 | 5.5 | 5.2 | 4.8 | 3.1 | 2.8 | 3.3 | 2.5 | 1.0 | 0.9 | 0.4 | -0.8 | -0.8 |
| Roads gravel | 5 | 11.3 | 11.6 | 10.9 | 10.4 | 8.2 | 6.7 | 7.7 | 6.4 | 3.9 | 3.0 | 1.6 | 0.3 | -0.2 |
| Water projects | 5 | 0.6 | 0.3 | 0.1 | -0.2 | -0.4 | -0.9 | -0.4 | -0.9 | -0.9 | -0.7 | -0.8 | -0.8 | -0.4 |

| Sector | Weights | Aug-18 | Sep-18 | Oct-18 | Nov-18 | Dec-18 | Jan-19 | Feb-19 | Mar-19 | Apr-19 | May-19 | Jun-19 | Jul-19 | Aug-19 |
|-----------------------|---------|--------|--------|--------|--------|--------|--------|--------|--------|--------|--------|--------|--------|--------|
| Whole sector | 100 | 0.0 | 0.0 | 0.0 | 0.0 | 0.0 | 0.0 | 0.0 | 0.0 | 0.0 | 0.0 | 0.0 | 0.0 | 0.0 |
| All buildings Total | 0 | 0.0 | 0.0 | 0.0 | 0.0 | 0.0 | 0.0 | 0.0 | 0.0 | 0.0 | 0.0 | 0.0 | 0.0 | 0.0 |
| Residential buildings | 30 | 0.0 | 0.0 | 0.0 | 0.0 | 0.0 | 0.0 | 0.0 | 0.0 | 0.0 | 0.0 | 0.0 | 0.0 | 0.0 |
| Formal | 15 | 0.0 | 0.0 | 0.0 | 0.0 | 0.0 | 0.0 | 0.0 | 0.0 | 0.0 | 0.0 | 0.0 | 0.0 | 0.0 |
| Own-account | 15 | 0.0 | 0.0 | 0.0 | 0.0 | 0.0 | 0.0 | 0.0 | 0.0 | 0.0 | 0.0 | 0.0 | 0.0 | 0.0 |
| Non-res buildings | 50 | 0.0 | 0.0 | 0.0 | 0.0 | 0.0 | 0.0 | 0.0 | 0.0 | 0.0 | 0.0 | 0.0 | 0.0 | 0.0 |
| Civil works | 20 | 0.1 | 0.1 | 0.1 | 0.0 | 0.0 | 0.0 | 0.0 | 0.0 | 0.0 | 0.0 | 0.0 | 0.0 | 0.0 |
| Roads paved | 10 | 0.1 | 0.1 | 0.1 | 0.0 | 0.0 | 0.0 | 0.0 | 0.0 | 0.0 | 0.0 | 0.0 | 0.0 | 0.0 |
| Roads gravel | 5 | 0.1 | 0.1 | 0.1 | 0.1 | 0.1 | 0.1 | 0.1 | 0.1 | 0.0 | 0.0 | 0.0 | 0.0 | 0.0 |
| Water projects | 5 | 0.0 | 0.0 | 0.0 | 0.0 | 0.0 | 0.0 | 0.0 | 0.0 | 0.0 | 0.0 | 0.0 | 0.0 | 0.0 |

Table 2: Percentage change since previous month

| Sector | Weights | Aug-18 | Sep-18 | Oct-18 | Nov-18 | Dec-18 | Jan-19 | Feb-19 | Mar-19 | Apr-19 | May-19 | Jun-19 | Jul-19 | Aug-19 |
|-----------------------|---------|--------|--------|--------|--------|--------|--------|--------|--------|--------|--------|--------|--------|--------|
| Whole sector | 100 | -0.52 | -0.13 | 0.08 | -0.13 | -0.03 | 0.06 | 0.05 | 0.04 | -0.03 | 0.14 | 0.07 | -0.11 | -0.20 |
| All buildings Total | 0 | -0.58 | -0.18 | 0.03 | -0.11 | -0.02 | 0.04 | 0.09 | 0.07 | -0.05 | 0.17 | 0.06 | -0.08 | -0.16 |
| Residential buildings | 30 | -0.76 | -0.20 | 0.02 | -0.07 | -0.09 | 0.12 | 0.08 | 0.13 | -0.15 | 0.30 | 0.11 | -0.17 | -0.19 |
| Formal | 15 | -0.79 | -0.22 | 0.02 | -0.07 | 0.04 | 0.00 | -0.01 | 0.03 | 0.02 | 0.16 | 0.01 | -0.09 | -0.27 |
| Own-account | 15 | -0.72 | -0.19 | 0.02 | -0.08 | -0.23 | 0.24 | 0.17 | 0.23 | -0.32 | 0.44 | 0.21 | -0.26 | -0.12 |
| Non-res buildings | 50 | -0.48 | -0.16 | 0.03 | -0.13 | 0.03 | 0.00 | 0.10 | 0.04 | 0.01 | 0.10 | 0.03 | -0.03 | -0.15 |
| Civil works | 20 | -0.28 | 0.08 | 0.30 | -0.19 | -0.09 | 0.16 | -0.12 | -0.08 | 0.06 | 0.03 | 0.11 | -0.21 | -0.35 |
| Roads paved | 10 | -0.33 | 0.02 | 0.40 | -0.25 | -0.43 | 0.44 | -0.15 | -0.14 | 0.13 | 0.03 | 0.17 | -0.37 | -0.42 |
| Roads gravel | 5 | 0.17 | 0.40 | 0.38 | -0.10 | 0.54 | -0.25 | -0.21 | -0.05 | -0.03 | -0.01 | 0.06 | -0.04 | -0.35 |
| Water projects | 5 | -0.65 | -0.14 | 0.02 | -0.17 | -0.01 | 0.00 | 0.03 | 0.01 | 0.01 | 0.09 | 0.04 | -0.05 | -0.21 |

Statistical Release Table A
Construction sector price indices

Jan-Mar 2006 = 100

| | Whole sector | | All buildings | | Residential buildings | | | | | |
|------|--------------|--------|---------------|--------|-----------------------|--------|--------|--------|-------------|--------|
| | | | | | Total | | Formal | | Own-account | |
| | 2018 | 2019 | 2018 | 2019 | 2018 | 2019 | 2018 | 2019 | 2018 | 2019 |
| Year | 243.74 | | 237.11 | | 217.19 | | 252.17 | | 183.00 | |
| Q1 | 239.81 | 245.15 | 233.46 | 238.29 | 214.31 | 217.65 | 249.99 | 252.07 | 179.71 | 183.87 |
| Q2 | 244.29 | 245.35 | 237.86 | 238.62 | 218.64 | 218.02 | 253.43 | 252.41 | 184.54 | 184.25 |
| Q3 | 245.76 | | 239.00 | | 218.39 | | 253.15 | | 184.32 | |
| Q4 | 245.10 | | 238.12 | | 217.41 | | 252.08 | | 183.45 | |
| Jan | 240.39 | 245.10 | 234.01 | 238.11 | 215.13 | 217.47 | 250.75 | 252.08 | 180.54 | 183.55 |
| Feb | 238.65 | 245.22 | 232.35 | 238.33 | 212.68 | 217.65 | 248.48 | 252.05 | 178.05 | 183.87 |
| Mar | 240.39 | 245.13 | 234.01 | 238.42 | 215.13 | 217.84 | 250.75 | 252.07 | 180.54 | 184.18 |
| Apr | 244.41 | 245.06 | 238.26 | 238.30 | 219.94 | 217.52 | 253.23 | 252.13 | 186.90 | 183.59 |
| May | 244.02 | 245.41 | 237.63 | 238.71 | 218.15 | 218.16 | 253.17 | 252.52 | 183.90 | 184.39 |
| Jun | 244.42 | 245.59 | 237.69 | 238.85 | 217.84 | 218.40 | 253.89 | 252.56 | 182.83 | 184.77 |
| Jul | 246.73 | 245.33 | 240.07 | 238.66 | 219.65 | 218.02 | 254.68 | 252.34 | 185.33 | 184.29 |
| Aug | 245.44 | 244.84 | 238.67 | 238.27 | 217.98 | 217.60 | 252.66 | 251.66 | 183.99 | 184.08 |
| Sep | 245.13 | | 238.25 | | 217.54 | | 252.12 | | 183.64 | |
| Oct | 245.33 | | 238.31 | | 217.58 | | 252.16 | | 183.68 | |
| Nov | 245.01 | | 238.04 | | 217.43 | | 251.99 | | 183.54 | |
| Dec | 244.94 | | 238.01 | | 217.22 | | 252.09 | | 183.11 | |

| | Non-res buildings | | Civil works | | Roads paved | | Roads gravel | | Water projects | |
|------|-------------------|--------|-------------|--------|-------------|--------|--------------|--------|----------------|--------|
| | 2018 | 2019 | 2018 | 2019 | 2018 | 2019 | 2018 | 2019 | 2018 | 2019 |
| Year | 248.92 | | 278.97 | | 290.42 | | 296.15 | | 246.02 | |
| Q1 | 244.78 | 250.57 | 273.65 | 281.52 | 284.90 | 292.79 | 284.47 | 303.58 | 246.50 | 244.71 |
| Q2 | 249.20 | 250.88 | 278.56 | 281.10 | 290.17 | 292.48 | 293.85 | 302.16 | 246.94 | 244.96 |
| Q3 | 251.26 | | 281.69 | | 293.32 | | 301.91 | | 245.82 | |
| Q4 | 250.46 | | 281.97 | | 293.27 | | 304.37 | | 244.83 | |
| Jan | 245.16 | 250.39 | 274.36 | 282.07 | 285.59 | 293.46 | 285.59 | 304.59 | 246.90 | 244.67 |
| Feb | 244.03 | 250.65 | 272.23 | 281.72 | 283.52 | 293.02 | 282.22 | 303.94 | 245.70 | 244.73 |
| Mar | 245.16 | 250.67 | 274.36 | 280.76 | 285.59 | 291.90 | 285.59 | 302.20 | 246.90 | 244.74 |
| Apr | 249.00 | 250.69 | 277.41 | 280.93 | 289.25 | 292.27 | 290.90 | 302.12 | 246.91 | 244.77 |
| May | 249.15 | 250.94 | 278.12 | 281.03 | 289.69 | 292.35 | 293.19 | 302.09 | 246.76 | 245.00 |
| Jun | 249.46 | 251.01 | 280.15 | 281.34 | 291.58 | 292.83 | 297.46 | 302.28 | 247.14 | 245.10 |
| Jul | 252.19 | 250.95 | 282.15 | 280.75 | 293.96 | 291.75 | 301.17 | 302.17 | 247.01 | 244.98 |
| Aug | 250.99 | 250.59 | 281.35 | 279.76 | 292.97 | 290.53 | 301.69 | 301.12 | 245.41 | 244.47 |
| Sep | 250.58 | | 281.56 | | 293.03 | | 302.89 | | 245.05 | |
| Oct | 250.66 | | 282.42 | | 294.19 | | 304.04 | | 245.11 | |
| Nov | 250.32 | | 281.87 | | 293.45 | | 303.73 | | 244.70 | |
| Dec | 250.40 | | 281.62 | | 292.18 | | 305.35 | | 244.67 | |

Source: Uganda Bureau of Statistics

Statistical Release Table B

Basic heading price indices, CPI Rescaled and Equipment charge out rates and cement quantities

Jan-Mar 2006 = 100

| | Timber | | Paint | | PVC/HDPE pipes | | Water tanks | | Burnt clay bricks & tiles | |
|------|--------|--------|--------|--------|----------------|--------|-------------|--------|---------------------------|--------|
| | 2018 | 2019 | 2018 | 2019 | 2018 | 2019 | 2018 | 2019 | 2018 | 2019 |
| Year | 250.74 | | 191.89 | | 187.15 | | 157.56 | | 285.25 | |
| Q1 | 246.13 | 258.43 | 184.18 | 198.13 | 187.15 | 187.15 | 159.35 | 156.73 | 285.18 | 287.00 |
| Q2 | 249.21 | 261.50 | 189.09 | 198.14 | 187.15 | 187.15 | 157.42 | 156.73 | 285.35 | 287.62 |
| Q3 | 252.28 | | 196.14 | | 187.15 | | 156.73 | | 285.24 | |
| Q4 | 255.35 | | 198.16 | | 187.15 | | 156.73 | | 285.24 | |
| Jan | 245.11 | 257.40 | 180.12 | 198.16 | 187.15 | 187.15 | 163.23 | 156.73 | 285.18 | 285.24 |
| Feb | 246.13 | 258.43 | 186.22 | 198.10 | 187.15 | 187.15 | 157.42 | 156.73 | 285.18 | 287.88 |
| Mar | 247.16 | 259.45 | 186.22 | 198.14 | 187.15 | 187.15 | 157.42 | 156.73 | 285.18 | 287.88 |
| Apr | 248.18 | 260.48 | 186.22 | 198.14 | 187.15 | 187.15 | 157.42 | 156.73 | 285.18 | 287.88 |
| May | 249.21 | 261.50 | 186.22 | 198.14 | 187.15 | 187.15 | 157.42 | 156.73 | 285.62 | 287.41 |
| Jun | 250.23 | 262.53 | 194.84 | 198.14 | 187.15 | 187.15 | 157.42 | 156.73 | 285.24 | 287.58 |
| Jul | 251.26 | 263.55 | 194.84 | 198.14 | 187.15 | 187.15 | 156.73 | 156.73 | 285.24 | 287.58 |
| Aug | 252.28 | 264.58 | 196.72 | 197.13 | 187.15 | 187.15 | 156.73 | 156.73 | 285.24 | 287.58 |
| Sep | 253.31 | | 196.87 | | 187.15 | | 156.73 | | 285.24 | |
| Oct | 254.33 | | 198.16 | | 187.15 | | 156.73 | | 285.24 | |
| Nov | 255.35 | | 198.16 | | 187.15 | | 156.73 | | 285.24 | |
| Dec | 256.38 | | 198.16 | | 187.15 | | 156.73 | | 285.24 | |

| | Cement | | Concrete articles | | Steel bars | | Roofing sheets | | Other iron & steel | |
|------|--------|--------|-------------------|--------|------------|--------|----------------|--------|--------------------|--------|
| | 2018 | 2019 | 2018 | 2019 | 2018 | 2019 | 2018 | 2019 | 2018 | 2019 |
| Year | 178.13 | | 225.04 | | 294.84 | | 235.80 | | 240.40 | |
| Q1 | 180.12 | 173.69 | 219.74 | 226.98 | 300.68 | 283.82 | 226.92 | 237.70 | 244.94 | 229.10 |
| Q2 | 183.12 | 172.86 | 226.71 | 226.90 | 304.47 | 282.97 | 239.88 | 238.44 | 250.12 | 229.03 |
| Q3 | 176.78 | | 226.87 | | 288.35 | | 238.35 | | 235.98 | |
| Q4 | 172.51 | | 226.86 | | 285.87 | | 238.07 | | 230.55 | |
| Jan | 178.61 | 173.40 | 213.57 | 226.98 | 300.38 | 284.80 | 221.76 | 238.46 | 239.77 | 229.89 |
| Feb | 180.39 | 173.83 | 218.95 | 226.98 | 299.25 | 283.10 | 223.83 | 237.04 | 242.01 | 228.73 |
| Mar | 181.36 | 173.83 | 226.71 | 226.98 | 302.41 | 283.57 | 235.15 | 237.59 | 253.03 | 228.66 |
| Apr | 182.54 | 173.83 | 226.71 | 226.98 | 303.72 | 283.58 | 237.41 | 238.50 | 251.94 | 229.09 |
| May | 183.88 | 172.37 | 226.71 | 226.76 | 303.72 | 282.82 | 238.46 | 238.91 | 248.76 | 229.14 |
| Jun | 182.93 | 172.37 | 226.71 | 226.98 | 305.97 | 282.49 | 243.76 | 237.91 | 249.65 | 228.85 |
| Jul | 181.31 | 172.37 | 226.87 | 226.98 | 292.05 | 282.38 | 241.37 | 234.02 | 245.51 | 227.41 |
| Aug | 176.97 | 171.03 | 226.87 | 226.98 | 286.49 | 282.37 | 235.85 | 233.58 | 231.39 | 222.49 |
| Sep | 172.07 | | 226.87 | | 286.50 | | 237.84 | | 231.05 | |
| Oct | 172.07 | | 226.64 | | 289.25 | | 237.75 | | 231.05 | |
| Nov | 172.07 | | 226.98 | | 283.92 | | 238.14 | | 230.53 | |
| Dec | 173.40 | | 226.98 | | 284.45 | | 238.32 | | 230.05 | |

Source: Uganda Bureau of Statistics

Statistical Release Table B (continued)

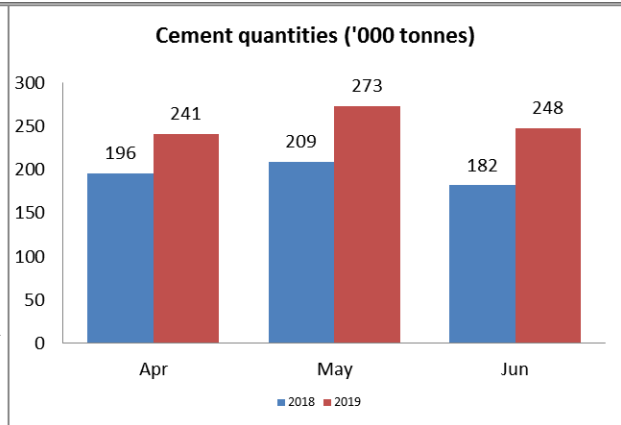
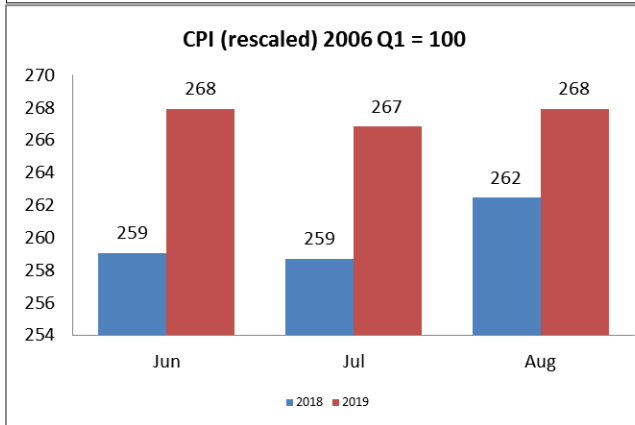
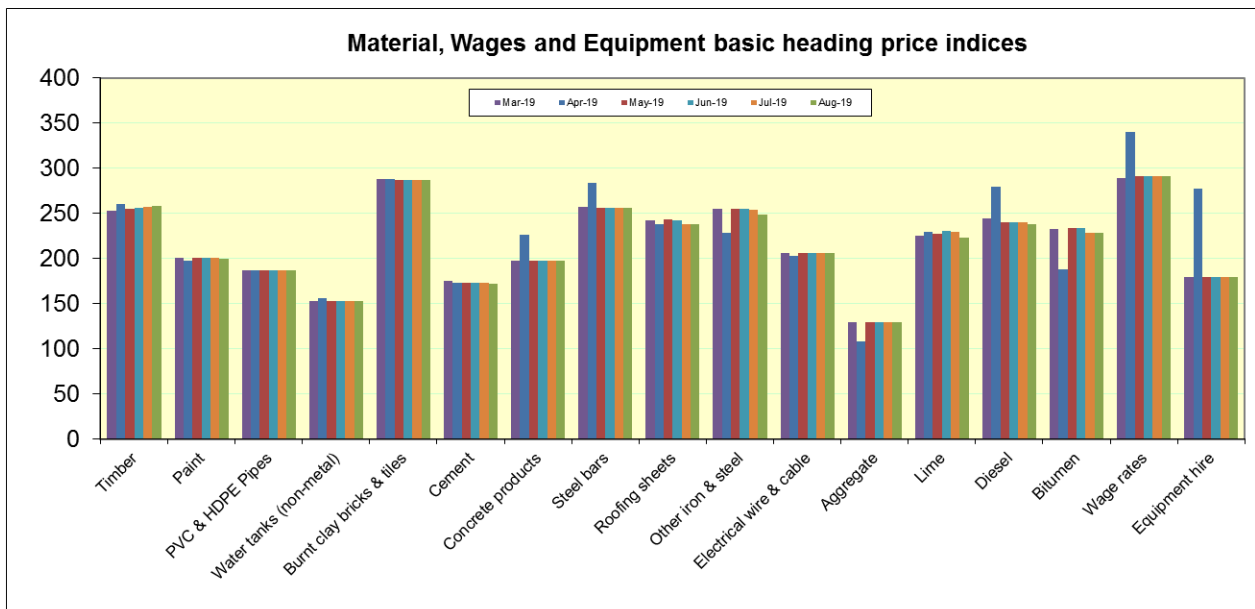
Basic heading price indices, CPI Rescaled and Equipment charge out rates and cement quantities

Jan-Mar 2006 = 100

| | Electrical wire & cable | | Aggregate | | Lime | | Diesel | | Bitumen | |
|------|-------------------------|--------|-----------|--------|--------|--------|--------|--------|---------|--------|
| | 2018 | 2019 | 2018 | 2019 | 2018 | 2019 | 2018 | 2019 | 2018 | 2019 |
| Year | 196.04 | | 99.64 | | 225.92 | | 263.73 | | 187.65 | |
| Q1 | 186.27 | 203.33 | 90.39 | 108.89 | 215.08 | 230.88 | 233.66 | 282.46 | 187.22 | 187.22 |
| Q2 | 191.74 | 203.48 | 90.39 | 108.89 | 226.68 | 230.70 | 260.69 | 278.63 | 187.96 | 188.16 |
| Q3 | 202.92 | | 108.89 | | 233.17 | | 277.15 | | 187.79 | |
| Q4 | 203.21 | | 108.89 | | 228.75 | | 283.44 | | 187.62 | |
| Jan | 186.14 | 203.05 | 90.39 | 108.89 | 214.66 | 233.26 | 221.41 | 284.63 | 187.18 | 187.25 |
| Feb | 186.11 | 203.47 | 90.39 | 108.89 | 215.62 | 232.16 | 236.18 | 283.23 | 187.16 | 187.14 |
| Mar | 186.55 | 203.47 | 90.39 | 108.89 | 214.97 | 227.23 | 243.40 | 279.50 | 187.33 | 187.28 |
| Apr | 191.68 | 203.48 | 90.39 | 108.89 | 232.10 | 230.10 | 254.77 | 279.33 | 187.58 | 188.12 |
| May | 192.25 | 203.48 | 90.39 | 108.89 | 226.35 | 229.08 | 259.69 | 278.34 | 187.81 | 188.24 |
| Jun | 191.30 | 203.48 | 90.39 | 108.89 | 221.58 | 232.94 | 267.60 | 278.22 | 188.48 | 188.10 |
| Jul | 202.72 | 203.47 | 108.89 | 108.89 | 236.60 | 231.14 | 275.55 | 277.99 | 187.81 | 183.52 |
| Aug | 202.60 | 203.47 | 108.89 | 108.89 | 233.88 | 225.39 | 276.66 | 275.74 | 187.47 | 183.52 |
| Sep | 203.44 | | 108.89 | | 229.04 | | 279.24 | | 188.08 | |
| Oct | 203.35 | | 108.89 | | 238.04 | | 281.70 | | 187.81 | |
| Nov | 203.19 | | 108.89 | | 235.62 | | 282.35 | | 187.67 | |
| Dec | 203.09 | | 108.89 | | 212.58 | | 286.26 | | 187.38 | |

| | Labour wage rates | | Equipment charge out rates | | CPI (rescaled) 2006 Q1 = 100 | | Cement quantities ('000 tonnes) | |
|------|-------------------|--------|----------------------------|--------|------------------------------|--------|---------------------------------|--------|
| | 2018 | 2019 | 2018 | 2019 | 2018 | 2019 | 2018 | 2019 |
| Year | 339.23 | | 278.57 | | 260.21 | | 2217.07 | |
| Q1 | 337.93 | 340.02 | 278.41 | 277.23 | 256.74 | 264.16 | 608.38 | 701.80 |
| Q2 | 338.95 | 341.92 | 278.66 | 277.40 | 258.94 | 267.77 | 586.99 | 761.57 |
| Q3 | 340.01 | | 279.16 | | 261.91 | | 549.08 | |
| Q4 | 340.01 | | 278.04 | | 263.26 | | 472.62 | |
| Jan | 336.96 | 340.02 | 278.41 | 277.23 | 256.32 | 263.32 | 217.11 | 237.95 |
| Feb | 338.42 | 340.02 | 278.41 | 277.23 | 256.34 | 264.00 | 195.45 | 203.02 |
| Mar | 338.42 | 340.02 | 278.41 | 277.23 | 257.56 | 265.18 | 195.82 | 260.83 |
| Apr | 338.42 | 340.02 | 278.41 | 277.23 | 258.26 | 267.23 | 196.12 | 240.89 |
| May | 338.42 | 342.77 | 278.41 | 277.23 | 259.50 | 268.18 | 208.97 | 273.15 |
| Jun | 340.01 | 342.98 | 279.16 | 277.73 | 259.06 | 267.91 | 181.91 | 247.53 |
| Jul | 340.01 | 342.98 | 279.16 | 277.73 | 258.68 | 266.82 | 205.69 | 263.97 |
| Aug | 340.01 | 342.98 | 279.16 | 277.73 | 262.44 | 267.90 | 168.75 | 279.55 |
| Sep | 340.01 | | 279.16 | | 264.62 | | 174.64 | |
| Oct | 340.01 | | 279.16 | | 263.68 | | 163.98 | |
| Nov | 340.01 | | 277.71 | | 263.29 | | 151.81 | |
| Dec | 340.02 | | 277.23 | | 262.80 | | 156.83 | |

Source: Uganda Bureau of Statistics



Explanatory Notes on the Statistical Release

The data presented in this Statistical Release are indices designed to show price changes in each period. On page 1 there is a short commentary highlighting the main changes observed.

The graphs on page 1 are derived from Table A “Construction Sector Price Indices” on page 4 of the statistical release. The first graph shows the price changes for the whole sector for each month for the one year. The second graph shows the monthly average price indices in each month for the whole sector and the major sub-sectors.

The charts on page 6 above show the indices for the latest Six months for each basic heading. The Consumer Price Index (CPI, rescaled) and the quantity of cement for the domestic market are also shown. (Rescaling means multiplying or dividing the original series by a constant factor so as to compare with the current trends in say CPI)

If the bars in the charts are at almost the same level, then they indicate very little (If any) change in prices. An increase in the height of the bars indicates an increase in the prices while a reduction in the height implies a decline in prices.