



UGANDA BUREAU OF STATISTICS



MONTHLY MERCHANDISE TRADE STATISTICS BULLETIN

SEPTEMBER 2021

Release

Foreword



The Bulletin provides figures on the trade flows between Uganda and the rest of the world for the month of July 2021. Merchandise Trade Statistics is critical for monitoring the performance of the economy and the developments in the external sector in general. This publication will be useful to investors, international traders; policy and decision makers in informing their decisions.

It is important to note that, for comparison purposes, the statistics contained herein exclude informal cross border trade data.

Your feedback on improving this monthly issue will be highly appreciated.

Aliziki K. Lubega
Head of Department of Macroeconomic
Statistics

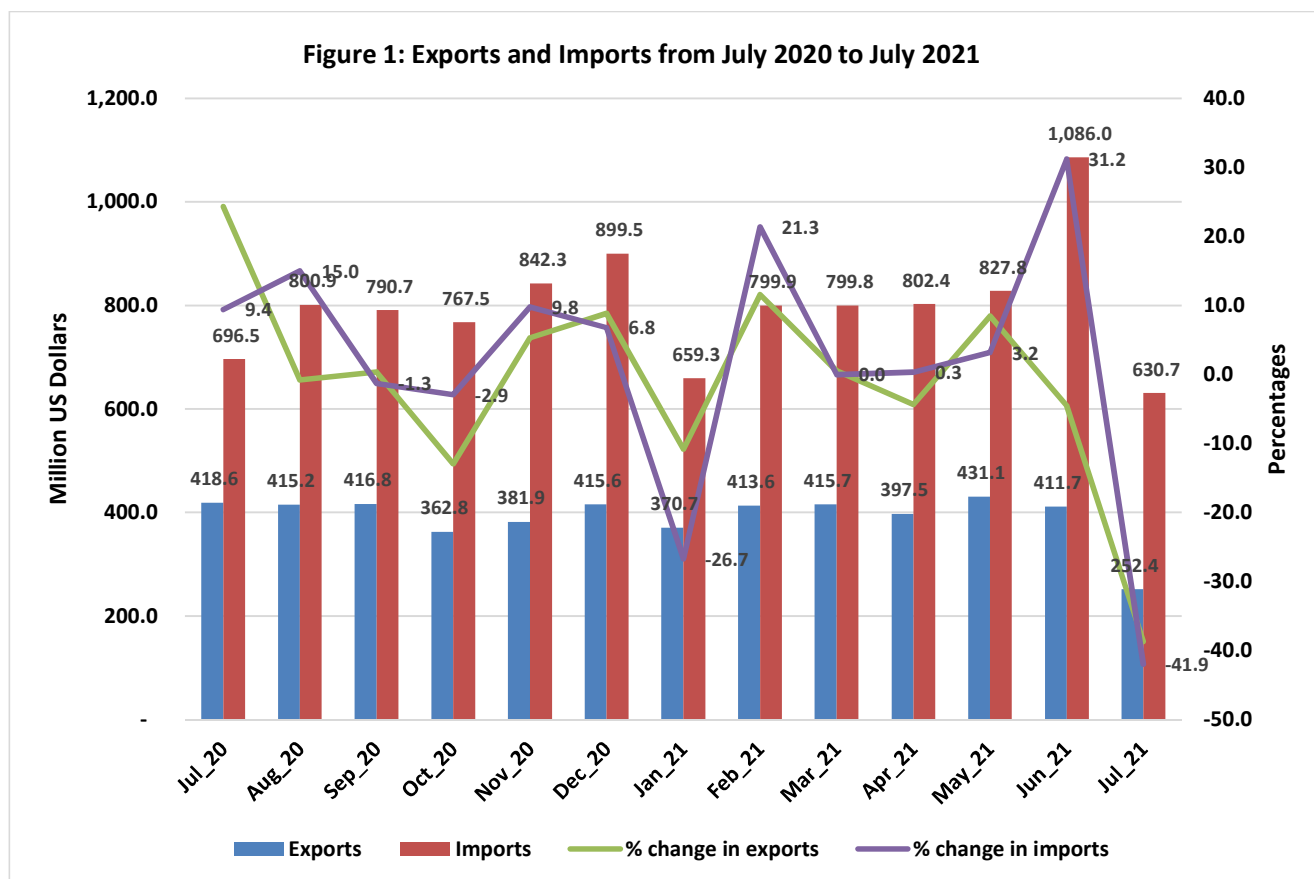
Introduction

The bulletin presents International Merchandise trade statistics (exports and imports flows) between Uganda and the rest of the world as compiled from Customs and Non-Customs data sources. **International merchandise trade** statistics record all goods which add to, or subtract from, the stock of material resources of a country by entering (as imports) or leaving (as exports) its economic territory. The data compiled from customs and commodity authorities is herein referred to as Formal exports and imports.

The compilation of International Merchandise Trade Statistics is based on the General Trade System and coded according to Harmonized Commodity Description and Coding System 2017 (HS2017) and the Standard International Trade Classification (SITC Rev4) commodity nomenclatures as prescribed in the International Merchandise Trade Statistics manual 2010 (IMTS2010).

In July 2021, total trade decreased by 41.0 percent to US\$ 883.1 million from US\$ 1,497.7 million recorded in June 2021. This was because no Gold and Gold Compounds were traded during the period under review resulting from a boycott by gold traders due to a 5% levy on Gold values by Government. Total exports decreased by 38.7 percent to US\$ 252.4 million in July 2021 from US\$ 411.7 million recorded in June 2021. Total imports flows decreased by 41.9 percent to US\$ 630.7 million in July 2021 from US\$ 1,086.0 million registered in June 2021.

Annually, total trade flows in July 2021 decreased by 20.8 percent from US\$ 1,115.1 million recorded in July 2020. Imports decreased by 9.5 percent to US\$ 630.7 million in July 2021 compared to US\$ 696.5 million recorded in July 2020. Similarly, Exports decreased by 39.7 percent to US\$ 252.4 million in July 2021 in comparison to US\$ 418.6 million registered in June 2020. See figure 1 and table 1 below.



The trade deficit increased to US\$ 378.2 million in July 2021 compared to a deficit of

US\$ 674.4 million recorded in June 2021. See Table 1 below.

Table 1: Merchandise Trade Statistics flows in Million US\$ from July 2020 to July 2021

Trade Flow	Jul_20	Aug_20	Sep_20	Oct_20	Nov_20	Dec_20	Jan_21	Feb_21	Mar_21	Apr_21	May_21	Jun_21	Jul_21
Exports	418.6	415.2	416.8	362.8	381.9	415.6	370.7	413.6	415.7	397.5	431.1	411.7	252.4
Imports	696.5	800.9	790.7	767.5	842.3	899.5	659.3	799.9	799.8	802.4	827.8	1,086.0	630.7
Total Trade	1,115.1	1,216.1	1,207.4	1,130.2	1,224.2	1,315.1	1,030.0	1,213.5	1,215.4	1,200.0	1,258.9	1,497.7	883.1
Trade Balance	-277.8	-385.7	-373.9	-404.7	-460.4	-483.8	-288.6	-386.4	-384.1	-404.9	-396.6	-674.4	-378.2
% change in exports	24.3	-0.8	0.4	-13.0	5.3	8.8	-10.8	11.6	0.5	-4.4	8.4	-4.5	-38.7
% change in imports	9.4	15.0	-1.3	-2.9	9.8	6.8	-26.7	21.3	0.0	0.3	3.2	31.2	-41.9
% change in Total Trade	14.5	9.1	-0.7	-6.4	8.3	7.4	-21.7	17.8	0.2	-1.3	4.9	19.0	-41.0

Source: Uganda Bureau of Statistics

Performance of Formal Commodity Exports

Coffee was the most exported commodity whose revenues increased to US\$ 69.9 million, accounting for 27.7 percent of total exports in July 2021 in comparison to US\$ 58.6 million generated in June 2021.

Beans and other legumes, and Animal/Vegetable fats and Oils were the second most exported

commodities each accounting for 3.6 percent of total exports in July 2021.

Petroleum products, Iron and Steel, Cocoa Beans, Fish and Fish products, Flowers, Tea, Sugar and Sugar Confectionary, and Cement were also among Uganda's leading exported commodities, see Table 2 below.

Table 2: Leading Export commodities by value in Million US\$ from July 2020 to July 2021

Commodity	Jul_20	Aug_20	Sep_20	Oct_20	Nov_20	Dec_20	Jan_21	Feb_21	Mar_21	Apr_21	May_21	Jun_21	Jul_21
Coffee	50.0	46.1	44.6	38.6	38.3	37.8	39.7	50.5	53.4	50.0	47.2	58.6	69.9
Beans and Other Legumes	2.7	2.6	1.6	4.6	9.5	11.5	5.6	5.3	5.7	4.0	7.3	14.0	9.2
Animal/Veg Fats & Oils	5.1	5.4	5.8	5.1	5.3	5.8	6.7	7.1	8.7	9.2	9.0	8.0	9.2
Petroleum Products	3.5	3.8	4.6	6.8	7.3	7.6	6.5	6.8	7.8	8.2	8.1	8.7	8.6
Iron and Steel	7.3	4.3	4.4	7.1	5.7	4.7	5.3	6.2	8.1	6.2	7.4	6.2	7.9
Cocoa Beans	5.6	4.0	7.0	7.7	7.7	10.9	10.1	12.5	13.3	10.3	7.4	8.9	7.9
Fish and Fish Products	8.6	8.6	10.4	12.3	12.8	9.6	10.5	8.3	8.3	7.8	9.1	10.2	6.9
Flowers	5.8	5.1	4.5	4.1	3.4	4.0	4.5	6.2	5.9	5.6	5.6	7.2	6.9
Tea	6.6	6.3	5.6	7.6	8.0	7.3	6.6	7.2	7.1	6.8	9.4	8.0	6.7
Sugar and Sugar Confectionary	5.4	3.8	4.0	4.4	3.4	3.9	9.2	7.7	7.5	12.8	12.8	11.5	6.7
Cement	6.2	5.0	5.9	5.3	6.4	7.1	5.4	6.6	7.7	7.0	8.6	6.8	6.5
Plastic Products	2.7	2.8	2.4	2.5	2.8	2.5	2.4	2.3	3.4	2.6	3.5	3.4	5.4
Electric Current	2.0	2.0	2.0	1.7	1.5	1.7	2.2	2.6	2.8	2.0	2.9	3.0	3.6
Tobacco	4.5	3.7	3.6	4.0	5.6	8.7	7.7	8.2	10.4	6.1	8.0	4.0	3.5
Maize	7.5	11.5	9.6	6.2	5.2	3.0	7.1	9.6	5.4	3.1	7.4	3.0	2.8
Beer	2.0	2.0	1.7	2.3	2.6	3.4	2.2	2.8	3.2	1.6	2.4	2.7	2.7
Mineral Water	1.3	1.5	1.3	1.7	1.8	2.3	1.4	1.7	2.0	1.7	1.6	1.9	2.3
Vegetables	2.3	2.0	1.8	2.0	1.8	2.0	1.7	1.9	2.3	2.1	2.5	2.5	2.3
Live Animals	1.1	1.1	1.3	0.9	1.0	1.6	1.4	1.0	1.9	1.7	2.0	1.8	2.0
Soap	1.2	1.1	1.3	0.8	1.4	1.1	1.1	1.2	2.3	1.6	1.9	1.9	1.9
Fruits	1.7	1.3	0.8	0.9	1.1	0.9	0.6	0.4	0.6	0.7	0.8	1.1	1.6
Hides and Skins	0.9	0.8	0.9	0.6	0.5	1.1	0.5	1.4	0.9	2.1	1.3	1.2	1.5
Gold and Gold Compounds	222.0	221.7	221.7	165.7	173.9	211.4	173.9	175.1	155.7	175.6	191.6	165.9	-
Other Commodities	62.8	68.7	69.7	69.8	75.2	65.8	58.3	81.2	91.0	68.6	73.3	71.3	76.4
Grand Total	418.6	415.2	416.8	362.8	381.9	415.6	370.7	413.6	415.7	397.5	431.1	411.7	252.4

Source: Uganda Bureau of Statistics

Formal Exports by Region and Country of destination

East African Community (EAC) was the leading destination of Uganda's formal exports throughout the period under review followed by European Union, Other Africa and Asia.

However, in July 2021, formal exports to the EAC decreased by 1.1 percent to US\$ 101.7 million, accounting for 40.3 percent of total formal exports compared to US\$ 102.8 million registered in June 2021. The leading country of destination was Kenya with revenues worth US\$ 52.3 million representing 20.7 percent of total export earnings.

European Union was the second largest region of destination whose export earnings slightly increased by 7.5 percent to US\$ 58.3 million in July 2021 compared to US\$ 54.3 million receipted in June 2021.

Exports to other African countries increased to US\$ 51.7 million in July 2021 compared to US\$ 47.2 million recorded in June 2021. D.R Congo, Algeria and Sudan were the major countries of destination in the region, with a combined market share of 16.4 percent in July 2021 compared to 6.6 percent registered in June 2021.

Exports to Asia decreased to US\$ 19.6 million in July 2021 from US\$ 21.8 million recorded in June 2021. Exports to India, Uganda's leading country of destination in Asia for the period under review increased to US\$ 9.1 million in July 2021 from US\$ 7.0 million registered in June 2021. Pakistan, Vietnam, China and Indonesia were also among the leading countries of destination in the region for the period under review.

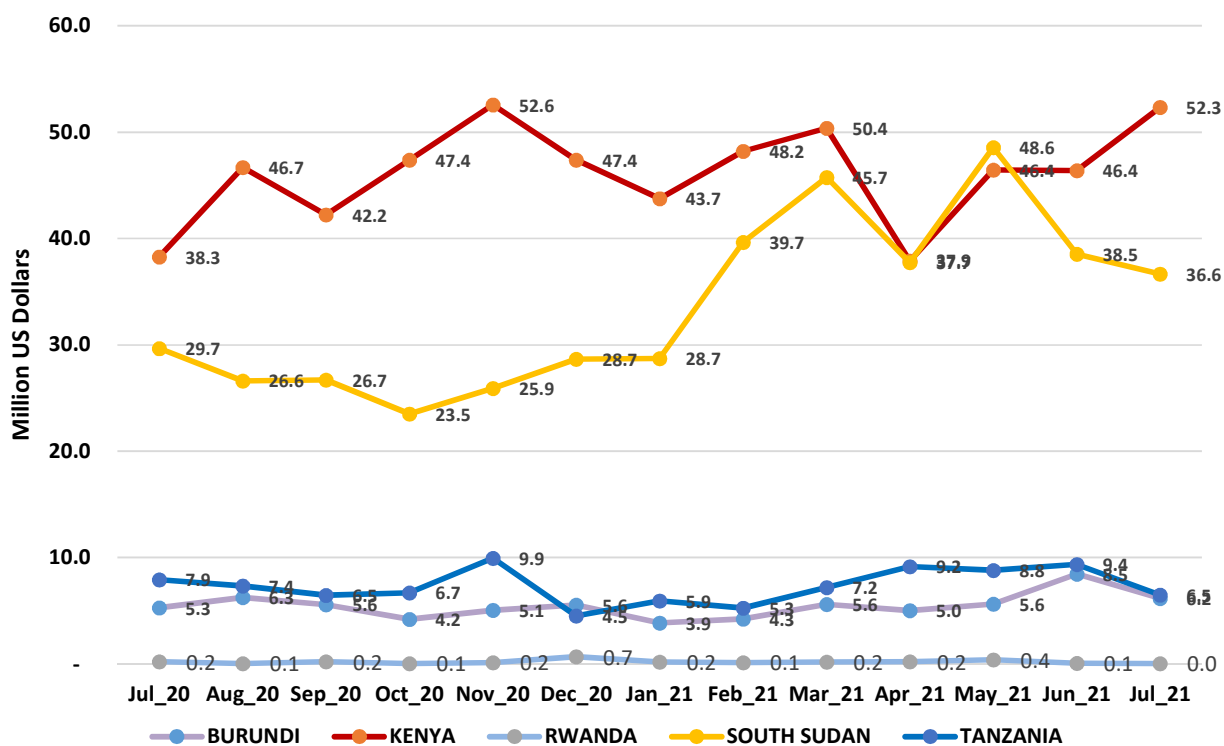
Exports destined to the America were worth US\$ 9.1 million in July 2021 with a slight 0.3 percent increase recorded in June 2021. In particular, these were destined to the United States, Mexico and Canada.

The market share for the Middle East significantly decreased by 96.7 percent to US\$ 5.7 million in July 2021 from US\$ 171.2 million recorded in June 2021, this was due to the fact that there were no gold exports to the region which is Uganda's biggest market for Gold. United Arab Emirates, Qatar, Israel and Saudi Arabia were among the leading destinations of Uganda's exports in the region.

Formal Exports to East African Community (EAC) Countries

Kenya was the leading destination of Uganda's exports among the East African Community (EAC) member states in July 2021 accounting for 20.7 percent of total exports. Revenues generated were worth US\$ 52.3 million. This was a 12.9 percent increase in the export earnings from Kenya in comparison to 0.2 percent decrease generated in June 2021. South Sudan was the second country of destination contributing 14.5 percent to Uganda's exports in July 2021 in comparison to the contribution of 9.4 percent recorded in June 2021. Trade activities between Uganda and Rwanda are decreased further to with only US\$ 0.05 million export earnings made in July 2021, compared to US\$0.1 million recorded in June 2021, see Figure 2 below and Annex Table 6.

Figure 2: Exports to EAC countries from July 2020 to July 2021



Performance of Formal Commodity Imports

Petroleum products (petrol, diesel, paraffin, aviation fuel and related materials) were Uganda's most imported products for the month of July 2021 accounting for 12.1 percent of total imports. The import bill for petroleum products was US\$ 76.0 million in July 2021 from US\$ 114.0 million recorded in June 2021. This was a 33.3 percent decrease in the importation of petroleum products in July 2021 in comparison to June 2021.

Iron and Steel were the second most imported commodity with import bill worth US\$ 63.4 million in July 2021 from US\$ 50.1 million registered in June 2021.

Road vehicles (including air-cushion vehicles) also contributed to the import bill accounting for 8.4 percent of total imports. However, this is a decrease of 22.1 percent from US\$ 67.8 Million in June 2021 to US\$ 52.8 million recorded in July 2021

Cereals and cereal preparations, Medical and pharmaceutical products, Machinery specialized for particular industries, Plastics in primary forms, Chemical materials and products, amongst others were among the leading imported products, see Table 3 below.

Table 3: Imports by Leading Products in Million US\$ from July 2020 to July 2021

Commodity	Jul_20	Aug_20	Sep_20	Oct_20	Nov_20	Dec_20	Jan_21	Feb_21	Mar_21	Apr_21	May_21	Jun_21	Jul_21
Petroleum, petroleum products and related materials	62.5	82.1	73.5	77.2	66.8	113.2	78.0	85.3	101.4	111.7	102.5	114.0	76.0
Iron and steel	25.5	29.6	27.2	27.8	35.7	39.2	36.0	44.8	49.1	51.4	56.3	50.1	63.4
Road vehicles (including air-cushion vehicles)	48.9	47.1	52.6	47.6	63.3	62.9	40.7	54.7	57.2	52.8	48.6	67.8	52.8
Cereals and cereal preparations	23.9	28.7	19.7	19.4	29.2	36.6	21.2	22.7	33.2	38.3	58.3	58.0	42.5
Medical and pharmaceutical products	30.4	31.5	41.6	30.3	38.7	44.8	24.8	30.0	36.0	31.1	28.3	32.4	38.4
Machinery specialized for particular industries	16.8	23.9	24.0	32.3	22.9	25.6	22.4	23.6	35.0	19.6	25.2	23.7	28.9
Plastics in primary forms	16.9	23.2	26.5	27.7	36.2	25.1	26.4	23.9	34.1	29.4	33.3	30.7	26.3
Chemical materials and products, nes	26.0	21.2	23.9	17.7	15.8	12.8	10.9	13.5	15.8	13.4	19.9	16.5	25.3
Fixed vegetable fats and oils, crude, refined or fractionated	12.4	22.5	30.7	22.3	34.3	17.7	25.0	28.9	31.4	36.5	32.6	41.2	21.2
Non-metallic mineral manufactures, nes	13.3	11.0	12.5	13.6	13.5	20.2	16.3	18.9	21.1	20.9	21.9	31.5	19.8
Telecommunications and sound recording/reproducing apparatus, etc	11.9	13.2	10.9	10.9	12.2	22.5	9.8	13.2	15.8	13.3	13.8	16.2	16.1
Paper, paperboard, and articles of paper pulp, paper or paperboard	8.8	11.1	10.8	10.1	10.1	12.0	9.3	9.4	11.0	12.5	11.9	13.2	13.2
Electrical machinery, apparatus and appliances, nes	13.1	18.8	14.7	17.7	32.4	15.5	14.4	23.9	21.8	18.3	14.6	18.0	12.8
Miscellaneous manufactured articles, nes	6.7	23.8	22.4	9.0	10.3	12.2	16.5	66.5	16.6	13.5	15.9	21.8	12.5
Essential oils, perfume materials; toilet cleaning preparations	8.5	9.1	10.0	11.4	12.5	12.0	12.3	7.7	13.3	12.4	11.5	9.2	12.3
General industrial machinery and equipment, nes, machine parts, nes	11.2	17.4	17.4	13.4	25.8	17.0	14.5	14.3	16.4	12.5	14.6	14.6	12.2
Manufactures of metals, nes	10.2	11.9	10.2	9.8	14.5	13.1	11.9	14.7	13.6	8.8	10.7	11.8	11.6
Organic chemicals	10.5	9.2	10.7	11.9	9.4	9.3	6.6	9.4	10.1	10.1	8.1	20.2	11.5
Professional, scientific and controlling instruments and apparatus, nes	6.8	12.6	10.7	6.1	7.5	7.8	4.1	11.1	16.1	7.8	9.3	8.2	10.7
Textile fibres (other than wool tops), wastes; not manufactured	4.5	8.1	10.5	11.4	12.0	11.7	7.7	9.0	8.9	10.6	11.2	11.0	8.9
Gold, non-monetary (excl. gold ores and concentrates)	226.5	221.0	197.3	196.3	173.5	220.9	154.8	151.8	112.5	172.8	158.1	344.6	-
Other Commodities	101.2	123.7	132.8	143.4	165.9	147.1	95.6	122.5	129.3	104.7	121.0	131.4	114.0
Grand Total	696.5	800.9	790.7	767.5	842.3	899.5	659.3	799.9	799.8	802.4	827.8	1,086.0	630.7

Source: Uganda Bureau of Statistics

Formal Imports by Region and Country of Origin

The Asian region continued to be the main source of Uganda's merchandise for the period under review. The region's import bill was US\$ 309.7 million in July 2021 from US\$ 397.1 million recorded in June 2021. China and India were the leading countries of origin of Uganda's imports in the region. China recorded a decrease in import expenses worth US\$ 146.9 million from US\$ 153.7 million recorded in June 2021 while expenses to India decreased to US\$ 72.0 million in July 2021 from US\$ 122.0 million recorded in June 2021.

The East African Community (EAC) ranked the second accounting for 13.2 percent of the imports bill in July 2021. Expenses to the region significantly decreased to US\$ 83.0 million in July 2021 from US\$ 198.5 million recorded in June 2021.

Imports from Middle East decreased to US\$ 47.5 in July 2021 from US\$ 95.6 million recorded in June 2021 contributing 12.8 percent to the total imports in July 2021. United Arab Emirates was the main contributing country within this region accounting for 7.5 percent of total imports in July 2021 from 5.8 percent registered in June 2021. Its imports decreased by 11.4 percent to US\$ 47.5 million in July 2021 from US\$ 62.7 million registered in June 2021.

Netherlands, Belgium and Germany Federal Re, were the leading sources of imports from the

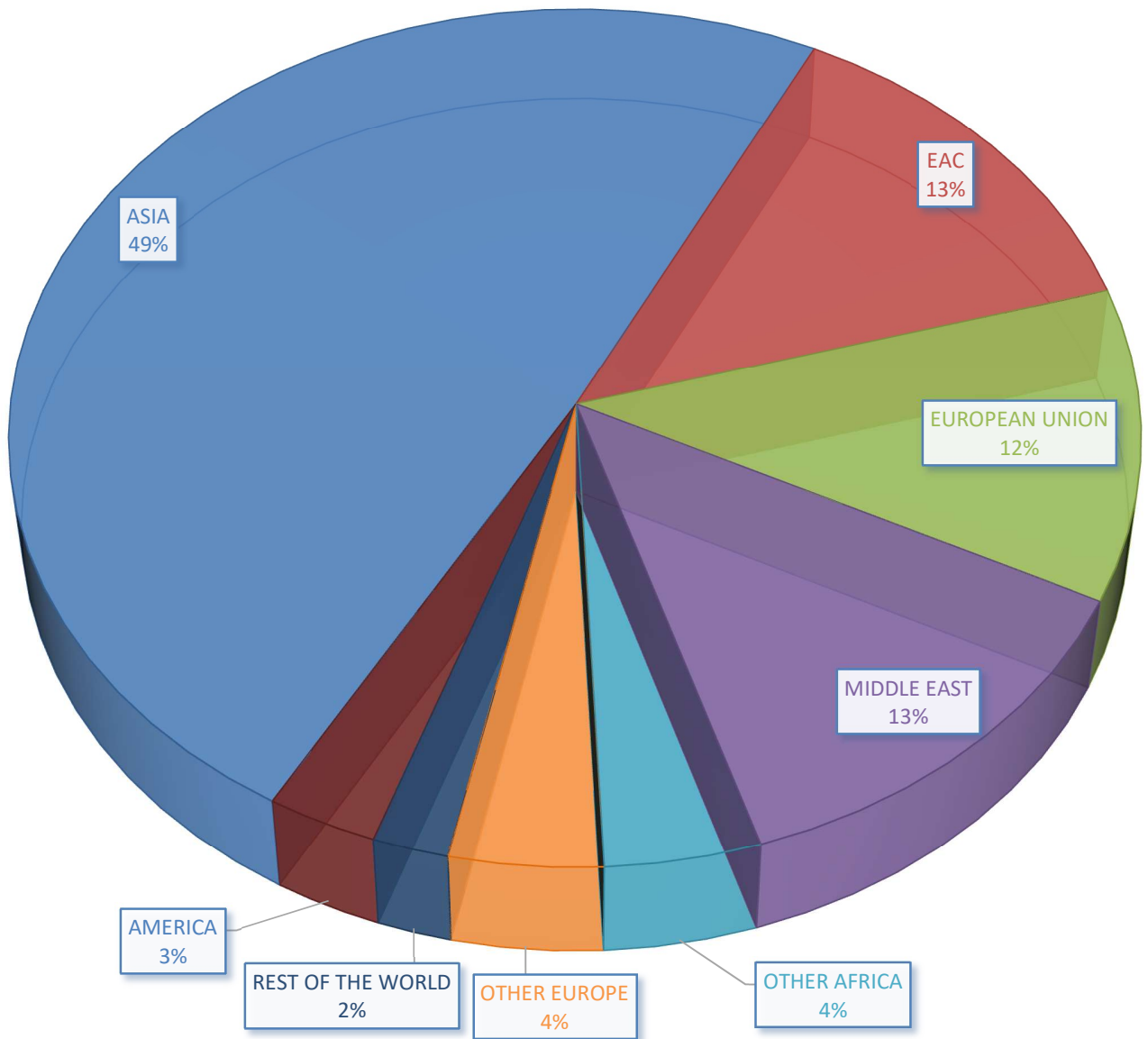
European region with import bills of US\$ 19.7 million, US\$ 15.5 million and US\$ 11.3 million respectively in July 2021 compared to US\$ 25.0 million, US\$ 3.0 million and 10.2 million, recorded in June 2021.

Imports from Other African countries decreased to US\$ 26.2 million contributing 4.2 percent to the total imports in July 2021. South Africa was the main contributing country within this region accounting for 1.8 percent of total imports in July 2021 from 2.9 percent registered in June 2021. Its imports decreased to US\$ 11.3 million in July 2021 from US\$ 31.1 million registered in June 2021

Switzerland and United Kingdom were the leading countries of origin in the Other Europe region. In July 2021, their import bill increased to US\$ 12.5 million and US\$ 6.5 million from US\$ 2.8 million and US\$ 6.0 million recorded in June 2021 respectively; see Figure 3 and Annex Table 8.

Notably, 79.2 percent of Uganda's imports originated from the regions of Asia, Africa and Middle East as seen in Figure 3 below.

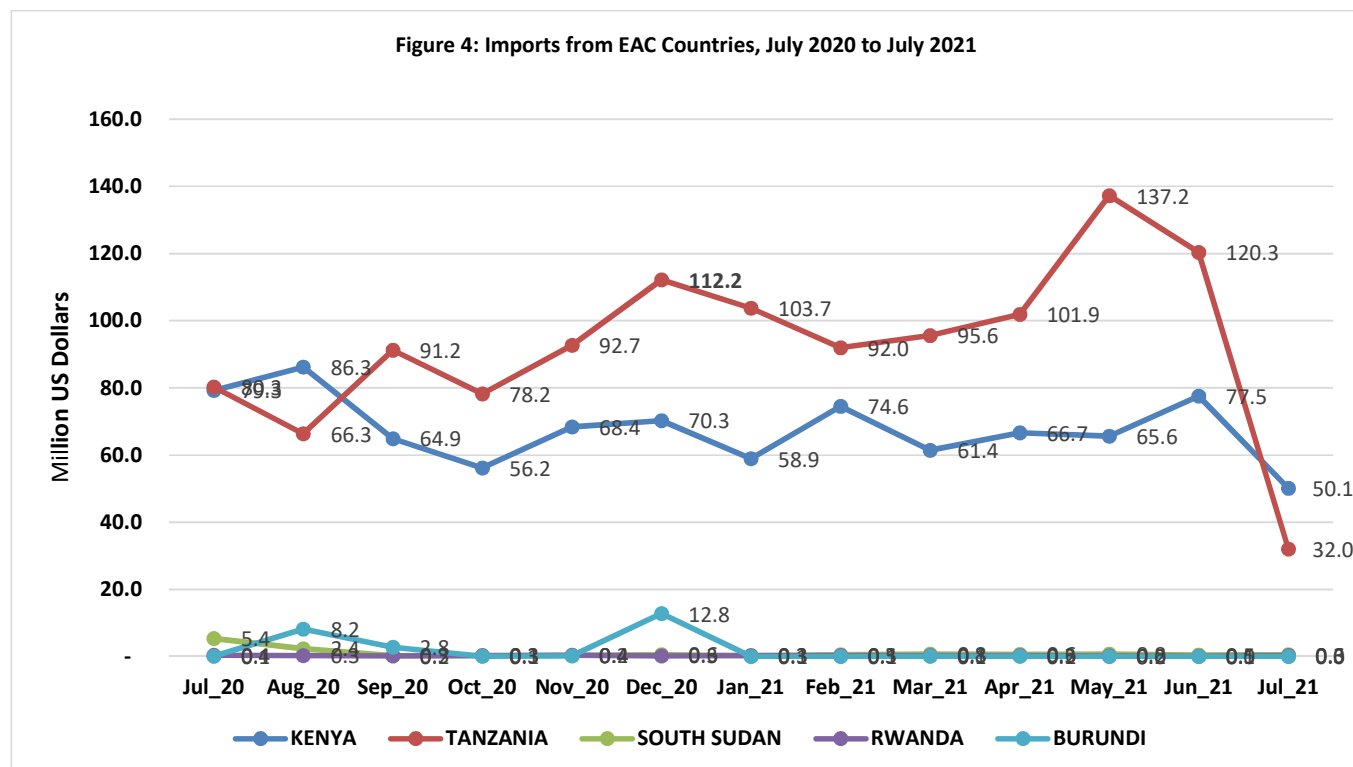
Figure 3:Imports By Region And Percentage Share July 2021



Formal Imports from East African Community (EAC) Countries

In July 2021, Kenya and Tanzania were the major source of Uganda's Imports among the EAC member states whose import bills were US\$ 50.1 million and US\$ 32.0 million respectively from US\$ 77.5 million and US\$ 120.3 million registered

in June 2021. The decrease in importation of rice led to lower import bills to Tanzania. Burundi and Rwanda were the least countries of origin of Uganda's Imports, see Figure 4 below and Annex Table 8.



Exports by border station

Malaba, , Busia, Elegu, Entebbe Cargo/Airport Mutukula and Mpondwe continued to be the major border stations through which exports worth US\$ 223.6 million exited the country to different destinations in July 2021 accounting for 88.6 percent of total exports in comparison to US\$ 382.8 million (93.0 percent) registered in June 2021, see Annex Table 7.

Imports by border station

Malaba, Busia, Entebbe Cargo/Airport, and Mutukula were the main entry border stations accounting for 99.5 percent (US\$ 927.2 million) and 99.9 percent (US\$ 1084.6 million) of Uganda's imports in July and June 2021 respectively, see Annex Table 9.

ANNEX

Table 4: Monthly Exports by Value in Million US\$ from July 2020 to July 2021

Commodity	Jul_20	Aug_20	Sep_20	Oct_20	Nov_20	Dec_20	Jan_21	Feb_21	Mar_21	Apr_21	May_21	Jun_21	Jul_21
Traditional Exports													
Coffee	50.0	46.1	44.6	38.6	38.3	37.8	39.7	50.5	53.4	50.0	47.2	58.6	69.9
Cotton	2.3	2.0	2.0	6.0	2.5	0.3	1.3	2.4	4.3	2.9	0.8	2.3	0.7
Tea	6.6	6.3	5.6	7.6	8.0	7.3	6.6	7.2	7.1	6.8	9.4	8.0	6.7
Tobacco	4.5	3.7	3.6	4.0	5.6	8.7	7.7	8.2	10.4	6.1	8.0	4.0	3.5
Non Traditional Exports													
Live Animals	1.1	1.1	1.3	0.9	1.0	1.6	1.4	1.0	1.9	1.7	2.0	1.8	2.0
Fish and Fish Products	8.6	8.6	10.4	12.3	12.8	9.6	10.5	8.3	8.3	7.8	9.1	10.2	6.9
Flowers	5.8	5.1	4.5	4.1	3.4	4.0	4.5	6.2	5.9	5.6	5.6	7.2	6.9
Beans and Other Legumes	2.7	2.6	1.6	4.6	9.5	11.5	5.6	5.3	5.7	4.0	7.3	14.0	9.2
Bananas	0.4	0.5	0.2	0.3	0.2	0.2	0.2	0.2	0.3	0.2	0.2	0.3	0.4
Fruits	1.7	1.3	0.8	0.9	1.1	0.9	0.6	0.4	0.6	0.7	0.8	1.1	1.6
Pepper	0.2	0.2	0.1	0.2	0.3	0.4	0.5	0.4	0.7	0.1	0.3	0.1	0.2
Maize	7.5	11.5	9.6	6.2	5.2	3.0	7.1	9.6	5.4	3.1	7.4	3.0	2.8
Ground Nuts	0.1	0.2	0.1	0.1	0.1	0.3	0.0	0.0	0.1	0.1	0.1	0.2	0.1
Sesame Seeds	0.8	1.7	3.5	1.9	2.2	4.5	4.0	4.7	4.7	5.0	1.1	1.1	1.0
Cocoa Beans	5.6	4.0	7.0	7.7	7.7	10.9	10.1	12.5	13.3	10.3	7.4	8.9	7.9
Electric Current	2.0	2.0	2.0	1.7	1.5	1.7	2.2	2.6	2.8	2.0	2.9	3.0	3.6
Soap	1.2	1.1	1.3	0.8	1.4	1.1	1.1	1.2	2.3	1.6	1.9	1.9	1.9
Hides and Skins	0.9	0.8	0.9	0.6	0.5	1.1	0.5	1.4	0.9	2.1	1.3	1.2	1.5
Gold and Gold Compounds	222.0	221.7	221.7	165.7	173.9	211.4	173.9	175.1	155.7	175.6	191.6	165.9	-
Hoes and Hand Tools	0.0	0.0	0.0	0.1	0.1	0.0	0.0	0.0	0.1	0.1	0.1	0.1	0.1
Cobalt	-	-	-	-	-	-	-	-	-	-	-	0.3	-
Petroleum Products	3.5	3.8	4.6	6.8	7.3	7.6	6.5	6.8	7.8	8.2	8.1	8.7	8.6
Other Precious Metals	0.0	0.0	0.0	0.0	0.0	0.0	0.0	0.0	0.0	0.0	0.0	0.0	0.0
Vanilla	0.1	0.2	0.4	0.3	0.2	0.0	0.2	0.3	0.2	0.6	0.2	0.3	0.2
Soya Beans	1.0	1.1	0.7	1.5	0.8	1.1	0.5	0.9	0.5	1.1	0.4	1.0	0.7
Sorghum	1.0	0.2	2.0	0.2	0.2	0.2	0.2	6.1	5.6	2.2	1.2	0.7	0.1
Plastic Products	2.7	2.8	2.4	2.5	2.8	2.5	2.4	2.3	3.4	2.6	3.5	3.4	5.4
Animal/Veg Fats & Oils	5.1	5.4	5.8	5.1	5.3	5.8	6.7	7.1	8.7	9.2	9.0	8.0	9.2
Sugar and Sugar Confectionary	5.4	3.8	4.0	4.4	3.4	3.9	9.2	7.7	7.5	12.8	12.8	11.5	6.7
Iron and Steel	7.3	4.3	4.4	7.1	5.7	4.7	5.3	6.2	8.1	6.2	7.4	6.2	7.9
Cement	6.2	5.0	5.9	5.3	6.4	7.1	5.4	6.6	7.7	7.0	8.6	6.8	6.5
Beer	2.0	2.0	1.7	2.3	2.6	3.4	2.2	2.8	3.2	1.6	2.4	2.7	2.7
Telephones for Cellular	0.1	0.0	0.1	0.0	0.1	0.1	0.0	0.0	0.0	0.1	0.0	0.0	0.1
Rice	1.6	2.5	1.9	1.4	1.0	2.2	1.0	0.2	0.6	0.2	0.3	0.3	0.3
Mineral Water	1.3	1.5	1.3	1.7	1.8	2.3	1.4	1.7	2.0	1.7	1.6	1.9	2.3
Vegetables	2.3	2.0	1.8	2.0	1.8	2.0	1.7	1.9	2.3	2.1	2.5	2.5	2.3
Other nes	55.2	60.0	58.8	57.8	67.5	56.4	50.3	65.9	74.0	56.1	68.4	64.3	72.6
Traditional Exports	63.3	58.0	55.8	56.2	54.4	54.1	55.2	68.3	75.3	65.8	65.4	72.8	80.8
Non Traditional Exports	355.3	357.2	361.0	306.6	327.5	361.5	315.5	345.3	340.4	331.8	365.7	338.8	171.6
Grand Total	418.6	415.2	416.8	362.8	381.9	415.6	370.7	413.6	415.7	397.5	431.1	411.7	252.4

Source: Uganda Bureau of Statistics

Table 5: Monthly Exports by Commodity & Quantity from July 2020 to July 2021

Commodity	Unit of Measure	Jul_20	Aug_20	Sep_20	Oct_20	Nov_20	Dec_20	Jan_21	Feb_21	Mar_21	Apr_21	May_21	Jun_21	Jul_21
Traditional Exports														
Coffee	Tonnes	32,595	31,181	30,388	25,687	25,819	25,375	26,606	33,743	34,105	32,111	29,584	37,103	42,002
Cotton	Tonnes	1,634	1,478	1,483	4,679	1,838	201	895	1,489	2,540	1,675	484	1,198	306
Tea	Tonnes	6,053	5,596	5,096	6,805	7,101	6,617	5,505	6,060	6,009	5,857	7,889	6,602	6,227
Tobacco	Tonnes	1,423	1,252	1,225	1,178	1,500	2,245	2,653	2,867	3,310	1,966	2,525	894	1,059
Non Traditional Exports														
Live Animals	000 Nos.	581	488	213	307	319	437	529	458	551	548	493	507	888
Fish and Fish Products	Tonnes	1,436	1,278	1,373	1,603	1,461	1,575	1,343	967	915	849	966	1,210	1,186
Flowers	Tonnes	632	572	548	523	445	536	575	711	708	649	671	737	715
Beans and Other Legumes	Tonnes	7,350	5,394	3,347	9,096	22,348	22,715	11,141	9,970	10,467	7,487	11,761	23,668	19,201
Bananas	Tonnes	648	670	457	494	264	519	409	402	684	512	803	1,127	886
Fruits	Tonnes	3,449	3,399	2,143	2,284	2,369	2,140	1,646	1,513	1,594	1,762	2,241	2,877	2,137
Pepper	Tonnes	47	75	15	42	45	80	103	81	109	10	56	20	24
Maize	Tonnes	31,842	42,168	36,975	25,058	20,037	12,901	27,256	37,208	18,982	10,910	24,291	9,144	8,317
Ground Nuts	Tonnes	151	345	210	113	152	565	10	36	114	85	112	143	96
Sesame Seeds	Tonnes	540	1,403	2,930	1,502	1,826	4,451	3,410	3,795	4,021	3,862	761	740	594
Cocoa Beans	Tonnes	2,529	1,795	3,078	3,215	3,200	4,474	4,110	5,240	5,671	4,202	3,110	3,837	3,526
Electric Current	000 Kwh.	21,014	21,910	21,545	20,004	17,618	19,211	24,303	28,106	30,647	22,437	31,519	32,751	38,767
Soap	Tonnes	2,221	1,693	2,304	1,391	2,476	2,105	1,992	1,941	4,065	2,616	2,824	2,763	2,753
Hides and Skins	Tonnes	612	504	579	410	473	716	300	897	522	1,141	845	743	944
Gold and Gold Compounds	Kgs	4,059	4,249	3,800	2,836	2,982	3,763	3,371	3,183	2,879	3,203	3,513	2,943	-
Hoes and Hand Tools	000 Nos.	14	2	10	66	37	3	27	29	58	55	42	59	51
Cobalt	Tonnes	-	-	-	-	-	-	-	-	-	-	-	40	-
Petroleum Products	000 Litres	3,363	3,614	4,259	6,428	6,890	7,381	6,519	6,374	7,369	7,715	7,676	8,161	8,081
Other Precious Metals	Tonnes.	7	7	3	2	1	1	1	1	1	1	1	0	0
Vanilla	Tonnes	0	2	2	2	1	0	2	2	2	3	2	2	2
Soya Beans	Tonnes	1,977	2,567	1,303	2,699	1,769	1,912	812	1,451	886	1,654	628	1,291	867
Sorghum	Tonnes	2,115	537	2,182	409	628	444	307	6,256	6,928	3,695	1,992	990	312
Plastic Products	Tonnes	2,183	2,505	2,220	2,187	2,167	2,018	1,619	1,686	2,722	1,899	2,291	2,538	3,737
Animal/Veg Fats & Oils	Tonnes	4,652	5,016	5,804	4,668	5,305	5,373	5,688	5,862	6,992	6,663	6,657	6,036	7,112
Sugar and Sugar Confectionary	Tonnes	9,909	6,976	7,231	7,970	6,155	7,055	15,659	12,577	12,767	22,598	22,638	20,079	11,964
Iron and Steel	Tonnes	8,029	4,522	4,792	7,201	5,755	5,883	5,640	6,576	8,065	6,557	7,582	6,354	8,614
Cement	Tonnes	47,040	39,116	45,035	40,539	48,240	52,728	43,810	51,614	59,954	54,320	61,590	48,537	48,108
Beer	000 Litres	2,556	2,319	1,888	2,477	2,712	3,349	2,613	3,275	3,561	1,893	2,729	2,880	2,964
Telephones for Cellular	000 Nos.	0	0	0	0	1	0	0	1	0	1	0	0	1
Rice	Tonnes	2,940	4,617	3,701	2,811	2,007	4,161	2,009	421	1,226	449	580	592	597
Mineral Water	Litres	2,683	3,006	2,785	3,947	4,131	5,085	3,646	4,179	4,674	4,228	3,929	4,132	5,198
Vegetables	Tonnes	3,475	2,792	2,358	2,268	2,147	2,210	1,768	1,644	2,090	2,186	2,712	3,522	2,563
Other nes	0	62,347	75,786	74,837	62,690	62,528	56,203	46,206	63,997	82,859	74,780	81,138	83,019	82,730

Source: Uganda Bureau of Statistics

Table 6: Monthly Exports by Region, Country of Destination and Value in Million US\$ from July 2020 to July 2021

Region/Country	Jul_20	Aug_20	Sep_20	Oct_20	Nov_20	Dec_20	Jan_21	Feb_21	Mar_21	Apr_21	May_21	Jun_21	Jul_21
EAC	81.4	87.0	81.2	81.9	93.6	86.9	82.5	97.5	109.2	90.1	109.9	102.8	101.7
Kenya	38.3	46.7	42.2	47.4	52.6	47.4	43.7	48.2	50.4	37.9	46.4	46.4	52.3
South Sudan	29.7	26.6	26.7	23.5	25.9	28.7	28.7	39.7	45.7	37.7	48.6	38.5	36.6
Tanzania	7.9	7.4	6.5	6.7	9.9	4.5	5.9	5.3	7.2	9.2	8.8	9.4	6.5
Burundi	5.3	6.3	5.6	4.2	5.1	5.6	3.9	4.3	5.6	5.0	5.6	8.5	6.2
Rwanda	0.2	0.1	0.2	0.1	0.2	0.7	0.2	0.1	0.2	0.2	0.4	0.1	0.0
European Union	41.0	38.7	41.2	39.9	37.2	38.1	42.3	56.6	51.2	50.0	50.0	54.3	58.3
Italy	12.2	14.4	11.4	12.9	11.9	8.8	12.7	15.1	12.7	15.4	16.8	19.2	23.6
Netherlands	6.6	5.5	5.6	6.5	5.6	6.2	6.7	10.7	9.1	9.5	9.6	10.5	10.6
Germany, Federal Re	7.1	6.9	9.3	5.4	6.7	7.8	6.4	12.7	11.3	9.6	7.9	11.0	10.0
Belgium	5.8	5.2	6.5	6.9	5.8	7.4	9.2	8.2	7.8	6.4	8.5	5.3	7.0
Spain	5.0	3.4	4.0	4.1	2.6	3.4	3.2	4.9	4.8	5.1	3.4	3.6	2.7
Others	4.4	3.3	4.4	4.0	4.6	4.5	4.0	5.0	5.4	4.1	3.7	4.7	4.3
Other Africa	42.8	43.8	41.7	39.1	39.5	42.2	35.9	41.9	50.7	37.1	43.3	47.2	51.7
D.R.Congo	24.5	22.8	25.3	23.1	23.3	28.1	22.2	24.8	29.3	22.2	28.3	28.9	29.6
Algeria	0.1	0.3	0.2	0.1	0.8	0.4	1.0	1.8	3.8	1.8	3.4	3.7	5.9
Sudan	12.0	11.8	9.3	5.4	6.1	6.4	4.8	2.7	4.9	3.9	0.2	5.0	5.9
South Africa	0.7	0.4	0.2	2.6	3.1	1.0	2.5	0.4	0.6	0.7	3.4	0.5	3.0
Morocco	2.1	2.0	2.4	2.4	1.7	2.0	1.8	1.7	1.6	2.0	1.5	2.5	2.5
Others	3.4	6.6	4.4	5.6	4.5	4.2	3.7	10.6	10.6	6.5	6.5	6.6	4.8
Asia	16.6	12.3	20.4	23.8	25.9	24.0	19.8	24.3	29.6	25.2	16.5	21.8	19.6
India	2.2	2.2	4.6	5.7	6.9	4.3	3.1	5.2	8.9	7.7	3.4	7.0	9.1
Pakistan	1.3	1.4	1.4	3.9	1.1	1.3	1.4	2.0	2.2	1.4	0.3	2.0	2.2
Viet Nam	1.1	0.5	0.5	0.7	0.9	1.1	0.8	0.6	0.9	1.5	1.0	0.7	1.7
China	2.4	2.2	3.8	3.2	4.3	5.0	4.4	4.9	5.2	3.6	2.0	1.5	1.6
Indonesia	3.1	0.8	1.8	0.4	1.1	3.6	1.1	4.7	2.5	3.0	1.5	3.5	1.5
Others	6.4	5.2	8.3	10.0	11.6	8.8	9.1	6.9	9.9	8.2	8.2	7.1	3.6
America	7.1	4.2	3.8	3.6	4.2	3.7	4.9	4.9	6.0	5.0	9.0	9.1	9.1
United States	6.0	4.1	3.7	3.0	4.0	3.6	4.6	4.6	4.8	4.7	8.5	8.3	8.1
Mexico	0.6	-	-	0.1	-	0.0	-	-	0.0	0.0	0.1	0.5	0.6
Canada	0.6	0.2	0.2	0.6	0.2	0.1	0.3	0.3	0.3	0.2	0.4	0.3	0.4
Others	0.0	0.0	-	-	-	0.0	0.0	0.1	0.9	0.1	-	-	-
Middle East	225.6	225.6	224.7	169.4	177.8	217.6	178.9	179.6	161.6	180.9	196.3	171.2	5.7
United Arab Emirates	223.5	223.4	222.9	167.2	175.6	215.3	176.7	177.7	158.5	178.1	194.0	168.1	2.6
Qatar	0.5	0.3	0.4	0.8	0.8	0.1	0.6	0.7	0.8	0.8	1.1	1.1	1.2
Israel	1.1	1.2	0.7	0.8	0.4	1.3	0.9	0.5	0.7	0.8	0.6	1.1	1.1
Saudi Arabia	0.4	0.5	0.3	0.4	0.5	0.4	0.5	0.2	0.4	0.6	0.1	0.4	0.3
Others	0.1	0.3	0.4	0.2	0.5	0.4	0.2	0.6	1.2	0.6	0.5	0.5	0.5
Other Europe	3.6	3.1	3.4	4.7	3.5	2.9	6.0	8.0	6.8	8.7	5.8	4.7	5.6
Switzerland	0.6	0.6	0.5	1.2	0.6	1.2	2.1	2.8	2.8	3.6	2.6	1.9	1.8
Turkey	1.8	0.9	1.6	2.0	1.5	0.5	3.1	3.3	2.4	3.6	1.5	1.5	1.5
Ukraine	0.1	0.0	0.1	0.4	0.3	0.1	0.1	0.4	0.6	0.5	0.8	0.3	1.2
United Kingdom	1.0	1.4	1.1	1.0	0.6	0.9	0.7	1.2	1.0	1.0	0.6	0.9	1.0
Others	0.1	0.1	0.1	0.1	0.4	0.2	0.0	0.2	0.0	0.0	0.4	0.1	0.2
Rest Of The World	0.5	0.4	0.4	0.4	0.2	0.2	0.6	0.7	0.7	0.6	0.5	0.5	0.6
Grand Total	418.6	415.2	416.8	362.8	381.9	415.6	370.7	413.6	415.7	397.5	431.1	411.7	252.4

Source: Uganda Bureau of Statistics

Table 7: Monthly Exports by Border Station and Value in Million US\$ from July 2020 to July 2021

Stations	Jul_20	Aug_20	Sep_20	Oct_20	Nov_20	Dec_20	Jan_21	Feb_21	Mar_21	Apr_21	May_21	Jun_21	Jul_21
Malaba	87.0	82.9	83.6	85.9	87.6	90.3	87.8	109.9	121.0	103.5	96.0	106.3	115.1
Busia	23.5	26.7	25.1	25.5	27.2	24.6	24.2	24.8	22.5	18.0	23.5	28.4	34.3
Elegu	25.4	22.5	22.8	20.8	21.6	24.3	23.7	34.6	40.8	33.9	43.5	34.5	31.9
Entebbe Airport	239.9	241.5	241.8	191.6	201.3	233.2	197.2	199.4	180.1	199.3	218.3	192.2	22.8
Mutukula	10.0	10.3	10.6	10.4	13.2	8.0	7.2	12.7	13.4	12.6	9.8	11.3	9.9
Mpondwe	6.7	6.1	6.2	7.3	7.9	8.6	8.5	8.2	8.8	7.3	9.8	10.1	9.6
Padea	2.9	3.6	6.2	4.1	3.7	3.4	2.9	3.7	5.1	2.6	4.4	4.2	5.6
Katuna	3.9	4.1	3.9	2.6	3.5	3.4	3.2	2.3	3.9	3.3	5.7	5.6	4.2
Oraba	4.0	4.2	3.9	2.7	3.7	3.9	4.4	4.1	5.0	4.1	5.2	4.3	4.1
Bunagana	2.6	2.3	3.3	2.0	2.5	3.0	1.7	2.8	3.5	2.4	2.6	3.0	3.6
Mirama Hills	3.7	3.3	2.9	2.9	3.7	4.4	2.9	3.1	3.6	3.5	4.1	4.2	3.6
Vurra	2.9	1.6	1.6	1.2	2.6	2.3	1.9	2.1	2.4	1.9	2.8	2.8	3.0
Ntoroko	3.8	4.3	3.4	3.7	2.4	4.0	2.7	3.3	3.3	3.2	3.5	3.1	2.8
Ishasha	0.8	0.9	0.7	1.0	0.3	0.8	0.1	0.7	1.1	0.3	0.4	0.2	0.8
Goli	1.1	0.5	0.4	0.7	0.6	0.7	1.4	0.8	0.6	0.6	0.9	0.8	0.5
Lwakhakha	0.3	0.4	0.4	0.3	0.1	0.3	0.3	0.3	0.2	0.1	0.2	0.3	0.4
Cyanika	0.1	0.1	0.1	0.1	0.0	0.0	0.3	0.2	0.2	0.2	0.2	0.1	0.2
Lia	-	-	-	-	-	-	-	-	-	-	-	-	0.2
Suam River	0.0	-	0.0	0.1	0.1	0.0	0.3	0.4	0.1	0.0	0.3	0.2	0.0
Busunga	0.0	-	-	-	0.0	0.3	0.1	0.2	-	-	-	-	-
Kikagati	-	0.0	0.0	0.0	-	0.0	0.0	-	0.0	-	-	-	-
Madi Opei	0.0	-	0.0	-	-	0.0	-	-	-	-	-	-	-
Portbell	0.2	-	-	-	-	-	-	-	-	0.7	-	-	-
Grand Total	418.6	415.2	416.8	362.8	381.9	415.6	370.7	413.6	415.7	397.5	431.1	411.7	252.4

Source: Uganda Bureau of Statistics

Table 8: Monthly Imports by Region, Country of Origin & Value in Million US\$ from July 2020 to July 2021

Region/Country	Jul_20	Aug_20	Sep_20	Oct_20	Nov_20	Dec_20	Jan_21	Feb_21	Mar_21	Apr_21	May_21	Jun_21	Jul_21
Asia	248.6	286.8	319.6	305.5	376.4	349.0	243.9	343.4	333.3	309.6	310.1	397.1	309.7
China	101.2	117.0	131.1	128.0	155.3	147.5	96.5	182.4	132.7	99.7	132.7	153.7	146.9
India	74.9	74.6	84.7	83.7	109.9	99.2	59.5	69.0	98.7	96.8	81.7	122.0	72.0
Japan	32.5	29.9	32.8	28.5	33.4	39.2	23.2	26.0	32.5	30.3	33.3	38.9	31.0
Others	40.0	65.3	71.0	65.3	77.8	63.1	64.6	66.0	69.4	82.8	62.4	82.4	59.9
EAC	165.4	163.4	159.5	135.1	162.1	196.2	163.4	167.4	158.1	169.7	203.8	198.5	83.0
Kenya	79.3	86.3	64.9	56.2	68.4	70.3	58.9	74.6	61.4	66.7	65.6	77.5	50.1
Tanzania	80.3	66.3	91.2	78.2	92.7	112.2	103.7	92.0	95.6	101.9	137.2	120.3	32.0
South Sudan	5.4	2.4	0.3	0.3	0.4	0.6	0.3	0.5	0.8	0.6	0.8	0.5	0.6
Rwanda	0.4	0.3	0.2	0.3	0.4	0.3	0.3	0.3	0.3	0.3	0.2	0.1	0.3
Burundi	0.1	8.2	2.8	0.1	0.2	12.8	0.1	0.1	0.1	0.2	0.0	0.0	0.0
Middle East	44.5	59.6	85.0	87.3	70.3	69.3	95.1	90.3	106.9	103.7	106.0	95.6	80.5
United Arab Emirate	18.7	23.3	42.1	45.9	44.3	47.6	72.9	48.4	61.2	66.2	70.8	62.7	47.5
Saudi Arabia	13.3	27.8	36.7	23.6	17.8	11.1	12.6	32.9	22.6	27.9	26.5	13.4	26.6
Kuwait	9.6	0.3	0.3	0.1	0.3	0.1	0.2	0.5	10.0	1.4	2.7	11.5	2.5
Others	2.8	8.3	6.0	17.7	7.9	10.4	9.4	8.5	13.0	8.2	6.0	8.0	3.9
European Union	66.6	84.0	53.5	53.6	82.0	105.5	57.3	66.8	87.0	63.4	62.9	59.8	74.2
Netherlands	24.7	30.4	16.1	8.1	15.2	66.9	12.7	7.2	37.7	24.5	27.6	25.0	19.7
Belgium	3.6	5.0	3.7	12.8	5.4	2.8	13.5	21.1	9.9	2.9	3.4	3.0	15.5
Germany, Federal Re	13.0	16.5	13.7	13.6	16.8	7.2	9.6	13.5	14.1	8.3	7.6	10.2	11.3
Others	25.3	32.1	20.1	19.1	44.6	28.7	21.5	25.1	25.3	27.7	24.3	21.6	27.6
Other Africa	136.0	157.8	128.5	151.0	114.6	141.0	68.2	82.4	62.4	110.9	81.3	289.0	26.2
South Africa	11.8	16.8	16.6	10.4	33.1	46.2	22.3	25.3	20.3	17.0	19.8	31.1	11.3
Egypt	5.8	8.2	8.6	11.6	11.2	10.3	11.6	11.0	12.5	12.9	12.8	14.6	9.9
Zambia	0.4	51.0	37.0	25.4	25.5	0.7	0.6	0.9	0.9	27.4	1.6	1.0	1.8
Others	117.9	81.8	66.3	103.6	44.8	83.9	33.7	45.2	28.7	53.6	47.1	242.3	3.3
Other Europe	14.7	26.0	25.4	15.2	18.9	17.3	15.3	22.5	21.3	19.7	22.6	18.5	25.7
Switzerland	0.7	0.4	10.3	1.0	1.9	0.8	0.8	1.6	2.4	2.1	2.7	2.8	12.5
United Kingdom	5.0	7.1	7.0	8.7	8.4	7.7	7.1	12.6	9.8	8.3	8.3	6.0	6.5
Turkey	3.8	5.8	5.6	3.9	6.1	5.0	6.3	6.7	5.4	5.8	9.9	7.0	3.8
Others	5.3	12.8	2.5	1.6	2.5	3.7	1.1	1.5	3.7	3.5	1.7	2.7	2.9
America	20.1	21.9	18.0	18.4	17.2	20.3	15.5	24.0	29.9	20.6	30.9	14.7	18.6
United States	13.9	10.9	13.2	11.7	11.2	14.0	5.3	13.3	8.2	5.4	16.9	8.3	12.8
Canada	2.5	1.6	1.4	4.6	3.2	2.6	2.2	1.0	2.0	1.1	2.0	1.5	2.1
Others	3.7	9.4	3.3	2.1	2.9	3.7	8.0	9.7	19.8	14.1	12.0	4.9	3.7
Rest Of The World	0.7	1.4	1.2	1.4	0.7	1.0	0.7	3.1	0.8	4.8	10.1	12.8	12.8
Grand Total	696.5	800.9	790.7	767.5	842.3	899.5	659.3	799.9	799.8	802.4	827.8	1,086.0	630.7

Source: Uganda Bureau of Statistics

Table 9: Monthly Imports by Border Station and Value in Million US\$ from July 2020 to July 2021

Stations	Jul_20	Aug_20	Sep_20	Oct_20	Nov_20	Dec_20	Jan_21	Feb_21	Mar_21	Apr_21	May_21	Jun_21	Jul_21
Malaba	271.7	380.4	388.5	378.0	429.9	412.0	304.0	374.5	428.6	372.5	373.0	425.3	380.6
Busia	123.0	108.2	100.3	113.8	149.9	160.4	136.9	139.7	162.6	171.1	192.1	194.8	130.1
Entebbe Airport	284.0	271.8	260.4	249.7	232.7	278.9	204.3	202.5	176.3	222.1	211.5	399.8	76.2
Mutukula	15.2	24.2	38.2	23.6	27.5	45.5	12.7	81.6	29.3	33.6	48.6	64.7	40.3
Lwakhakha	0.4	0.4	0.5	0.4	0.3	0.3	0.2	0.3	0.3	0.3	0.4	0.2	1.1
Katuna	0.4	0.5	0.4	0.4	0.5	0.6	0.6	0.3	0.4	0.2	0.4	0.2	0.8
Elegu	0.6	0.5	0.4	0.5	0.4	0.7	0.2	0.5	0.9	0.8	0.9	0.3	0.6
Mirama Hill	0.3	0.2	0.2	0.6	0.2	0.2	0.1	0.1	0.1	0.2	0.2	0.1	0.2
Mpondwe	0.2	0.3	0.2	0.2	0.1	0.2	0.0	0.1	0.1	0.2	0.2	0.0	0.2
Kikagati	0.0	0.0	0.0	0.0	0.0	0.0	0.0	0.1	0.5	0.0	0.0	0.0	0.2
Goli	0.1	0.1	0.4	0.1	0.4	0.0	0.0	0.1	0.1	0.1	0.2	0.1	0.1
Vurra	0.1	0.2	1.0	0.1	0.1	0.4	0.1	0.2	0.3	0.1	0.1	0.2	0.1
Lia	-	-	-	-	-	-	-	-	-	0.1	0.1	0.1	0.1
Portbell	0.0	13.8	-	-	0.0	-	0.0	-	-	1.1	-	-	0.0
Oraba	0.0	0.0	0.0	0.0	0.0	0.0	0.0	0.0	0.2	0.1	0.1	0.1	0.0
Cyanika	0.0	0.0	0.0	-	0.0	-	0.0	0.0	0.0	-	0.0	0.0	0.0
Padea	0.2	0.1	0.1	0.1	0.0	0.0	0.0	0.0	0.0	0.0	0.0	0.1	0.0
Bunagana	0.0	0.0	0.1	0.0	0.1	-	0.0	0.0	0.0	0.0	0.0	-	0.0
Ntoroko	0.0	0.0	0.0	0.0	0.1	0.0	0.0	0.0	0.0	0.0	0.0	0.0	0.0
Busunga	0.0	0.0	0.0	0.0	0.0	0.0	0.0	0.0	0.0	0.0	0.0	0.0	0.0
Bugango	0.0	0.0	0.0	0.0	0.0	0.0	0.0	0.0	0.0	0.0	0.0	0.0	0.0
Suam River	0.0	0.0	0.0	0.0	0.0	0.0	0.0	0.0	0.0	0.0	0.0	0.0	0.0
Ishasha	0.0	0.0	0.0	0.0	0.0	0.0	0.0	0.0	0.0	-	-	-	-
Madi Opei	0.0	0.0	0.0	0.0	0.0	0.2	-	-	-	-	-	-	-
Grand Total	696.5	800.9	790.7	767.5	842.3	899.5	659.3	799.9	799.8	802.4	827.8	1,086.0	630.7

Source: Uganda Bureau of Statistics