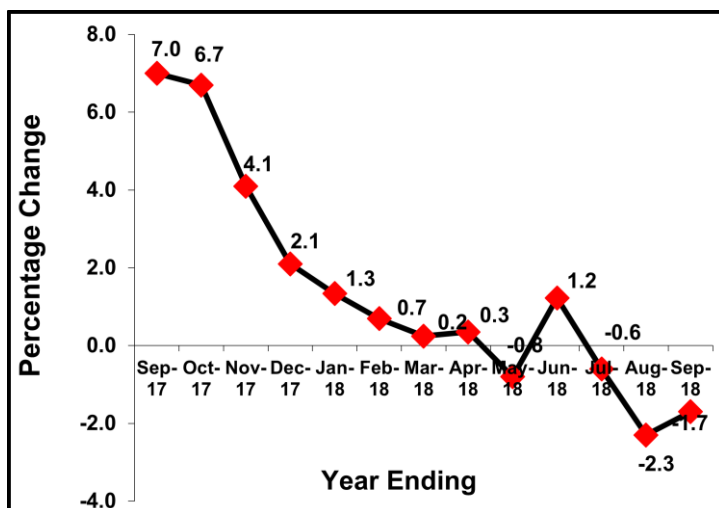


## HIGHLIGHTS

**Annual Producer Prices for Manufacturing and Utility decreased to - 1.7 percent**

The producer prices for manufactured goods and utilities decreased by 1.7% during the year ending September 2018 compared to 2.3% decrease recorded for the year ended August 2018.

**Figure 1: Annual changes in PPI-M&U Sept 2017 - Sept 2018**



**The contributor to the -1.7 percentage drop was;**

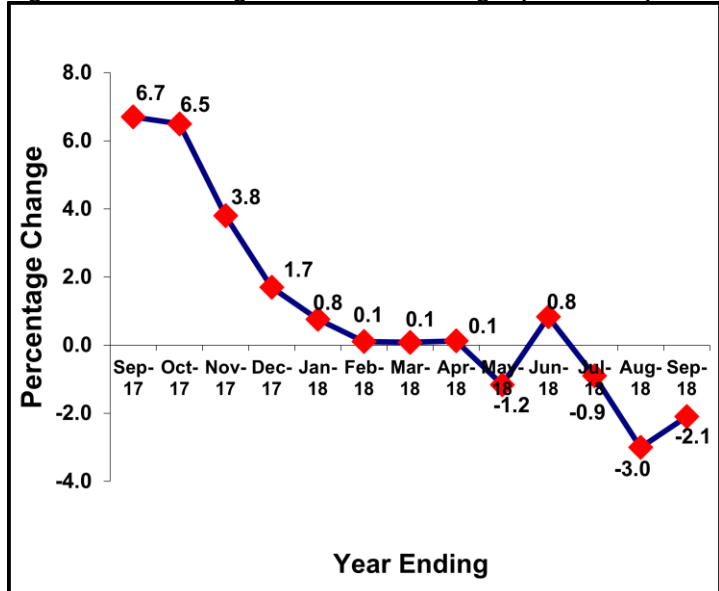
A drop in the prices under Manufacturing sub-sector by 2.1% for the year ending September 2018 compared to 3.0% decrease registered for the year ended August 2018.

### Producer Price Index for Manufacturing sub-sector

**Annual Producer Prices for manufacturing sub-sector dropped by 2.1 percent.**

The Annual producer prices for manufactured goods decreased by 2.1% during the year ending September 2018 compared to the 3.0% reduction registered for the year ended August 2018.

**Figure 2: Annual changes in PPI-Manufacturing Sept 2017 – Sept 2018**



**Main contributors to the 2.1 Percent decline in prices were;**

- A decrease of 5.3% in Food product prices in September 2018 compared to 6.7% decline recorded in August 2018.
- A 8.2% decrease in other Non-metallic Mineral Products in September 2018 compared to 7.5% reduction recorded in August 2018.
- A decrease of 2.4% in Beverage prices in September 2018 compared to 3.1% reduction in August 2018.
- A decrease of 6.9 in Leather & related products in September 2018 compared to 11.1% reduction in August 2018.

### Monthly Changes in PPI-M&U

The monthly producer prices for manufactured goods and Utilities increased by 0.7% in September 2018 compared to 1.0% decrease registered in August 2018.

The rise in prices was attributed to;

- A 0.7% rise in the prices of manufactured goods in September 2018 compared to 1.4% decrease in August 2018; and
- A 0.4% price increase under the utility sector in September 2018 compared to a 2.4% rise recorded in August 2018.

### Monthly PPI- M for the Domestic Market

The monthly producer prices of manufactured goods produced for domestic consumption rose by 0.3% in September 2018 compared to 0.4% registered increase in August 2018.

The rise in monthly prices of domestic manufactured goods was mainly attributed to a rise in prices of food products by 0.5%, Beverages by 0.2% and Basic metals by 0.9% in September 2018. (Details in Table 2c).

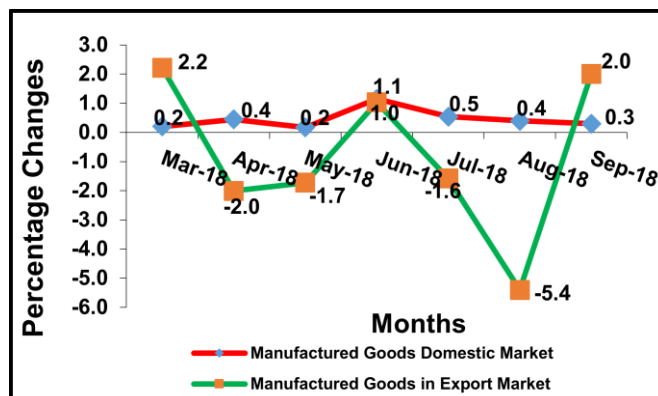
### Monthly PPI- M for the Export Market

Producer prices of Manufactured Products for Exports rose by 2.0% in September 2018 from 5.4% decrease recorded in August 2018.

The increase in prices of exported goods was attributed to;

- The increased prices of Food products by 2.5% in September 2018 compared to -6.7% recorded in August 2018.
- The increased prices of Tobacco, Chemicals, Beverages and Pharmaceuticals by 1.9% in September compared to 0.8% decreases recorded in August 2018 ( Details in Table 3c).

**Figure 3: Monthly Changes in PPI-M, Domestic and Export March 2018 – Sept 2018**



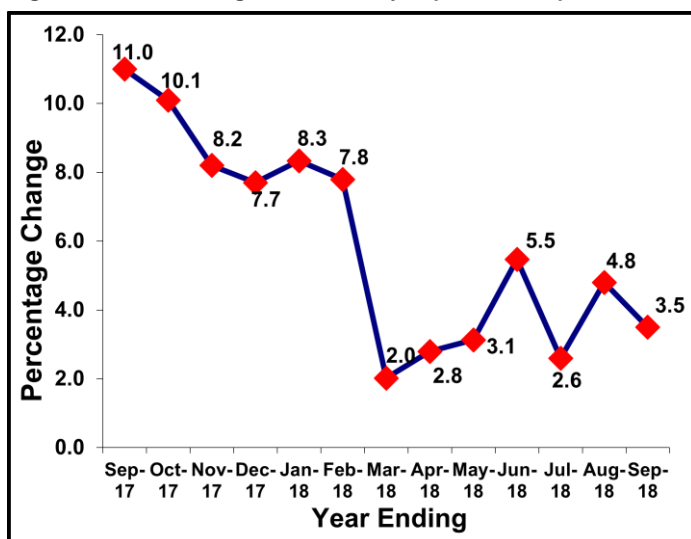
## Producer Price Index for Utilities

### Annual Producer Prices for Utility was registered at 3.5 percent

The producer prices for utilities increased by 3.5% for the year ending September 2018 compared to 4.8% increment recorded for the year ended August 2018.

The contributors to the 3.5% were the rise in prices of Electricity Power Generation by 3.8% in September 2018 compared to 5.3% recorded for the year ended August 2018 and Water Collection, Treatment & Supply by 2.3% recorded for the year ending September 2018.

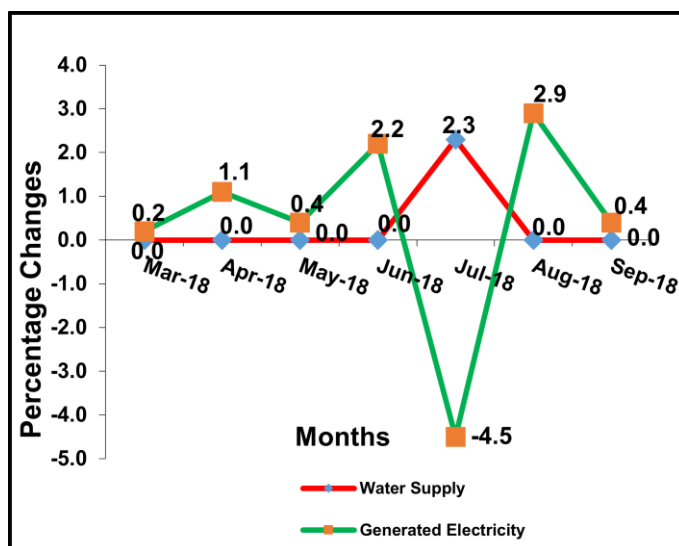
Figure 4: Annual changes in PPI-Utility Sept 2017 – Sept 2018



## Monthly Changes in PPI-Utility

The Producer Prices for Utilities increased by 0.4% in September 2018 compared to 2.4% rise recorded in August 2018. The rise in Utility prices was mainly due to the increase in prices of Electricity Power Generation by 0.4% in September 2018 compared to a rise of 2.9% recorded in August 2018.

Figure 5: Monthly Changes in PPI-Utility January 2018 – July 2018



Imelda Atai Musana  
Ag. Executive Director

Tuesday 30<sup>th</sup> October 2018

ISSUE (Monthly)

68<sup>th</sup> Issue October 2018

Expected Release Date

24<sup>th</sup> October 2018

Actual Release Date

30<sup>th</sup> October 2018

For More Information Contact  
Peter Opio (Mr)  
Head Business & Industry Statistics

Tel: 041-237550/371945/0414706016/15 Fax: 041-237553  
Email: [ubos@ubos.org](mailto:ubos@ubos.org)  
Website: [www.ubos.org](http://www.ubos.org)  
Mobile: 0782319690

Statistics House  
Plot 9, Colville Street, P.O. Box 7186, Kampala

**Table1a: Monthly Producer Price Index-Manufacturing and Utilities (PPI-M&U), Sept 2017 to Sept 2018**

Base period: July 2009 to June 2010=100

Industry Group	Weight	Sep-17	Oct-17	Nov-17	Dec-17	Jan-18	Feb-18	Mar-18	Apr-18	May-18	Jun-18	Jul-18	Aug-18	Sep-18
PPI-MANUFACTURING AND UTILITIES (PPI -M&U)	1000.000	186.76	186.79	185.38	184.15	183.30	183.00	184.44	184.00	183.28	185.19	184.31	182.41	183.67
PPI-MANUFACTURING	921.400	186.92	186.86	185.31	184.00	183.03	182.65	184.19	183.56	182.72	184.47	184.12	181.63	182.94
PPI-UTILITIES	78.600	184.94	186.10	186.18	185.80	186.23	186.80	187.13	188.83	189.42	192.90	186.33	190.75	191.44
PPI-MANUFACTURING	921.400	186.92	186.86	185.31	184.00	183.03	182.65	184.19	183.56	182.72	184.47	184.12	181.63	182.94
MANUFACTURE OF FOOD PRODUCTS	364.960	209.47	210.34	206.89	202.91	202.19	200.37	201.99	199.74	197.71	200.95	200.79	195.88	198.31
MANUFACTURE OF BEVERAGES	77.507	174.57	175.23	175.45	175.08	167.78	167.80	167.88	168.37	168.75	170.40	168.64	169.23	170.45
MANUFACTURE OF TOBACCO PRODUCTS	25.344	130.97	131.97	131.99	131.58	132.03	131.96	132.55	133.54	134.32	137.34	135.21	134.39	136.28
MANUFACTURE OF TEXTILES	19.225	216.06	207.80	207.80	207.80	207.80	214.37	214.37	214.37	214.37	219.31	219.31	221.84	221.84
MANUFACTURE OF WEARING APPAREL	55.243	206.88	204.73	204.73	204.73	204.50	207.06	207.59	207.59	207.59	208.83	209.53	210.16	210.16
MANUFACTURE OF LEATHER & RELATED PRODUCTS	15.917	194.63	196.62	198.75	212.33	206.98	198.79	218.71	212.54	208.93	198.37	196.68	182.26	181.27
MANUFACTURE OF WOOD AND PRODUCTS OF WOOD, CORK, EXCEPT FURNITURE	7.316	163.01	163.31	162.19	159.06	155.11	153.57	153.97	155.90	156.12	158.25	157.66	157.57	157.77
MANUFACTURE OF PAPER & PAPER PRODUCTS	15.858	185.33	188.10	188.06	191.41	191.90	192.00	192.83	195.34	196.10	205.05	197.18	195.98	196.03
PRINTING AND REPRODUCTION OF RECORDED MEDIA	25.329	158.13	158.16	157.66	159.37	154.22	156.88	156.90	157.07	157.67	159.40	155.31	155.28	155.35
MANUFACTURE OF CHEMICALS & CHEMICAL PRODUCTS	72.487	169.61	167.32	167.33	167.70	167.01	167.60	169.98	172.62	172.94	173.89	172.85	173.33	174.13
MANUFACTURE OF PHARMACEUTICALS, MEDICINAL CHEMICAL & BOTANICAL PRODUCTS	23.736	175.88	176.69	176.73	180.20	182.29	189.89	190.33	190.65	191.23	203.92	208.76	208.67	209.42
MANUFACTURE OF RUBBER & PLASTIC PRODUCTS	26.455	155.83	154.48	154.48	153.09	154.84	155.40	155.48	157.64	157.64	158.78	160.87	160.87	160.30
MANUFACTURE OF OTHER NON-METALLIC MINERAL PRODUCTS	137.550	135.04	133.34	133.35	133.17	133.94	134.88	135.71	136.63	137.16	127.06	126.63	124.85	123.90
MANUFACTURE OF BASIC METALS	14.534	168.80	173.74	175.72	188.51	195.61	188.61	192.59	194.92	193.96	195.22	191.43	189.44	191.08
MANUFACTURE OF FABRICATED METAL PRODUCTS, EXCEPT MACHINERY AND EQUIPMENT	10.831	169.32	170.02	170.62	170.89	173.98	171.25	173.25	170.53	170.95	175.44	173.50	171.89	175.41
MANUFACTURE OF ELECTRICAL EQUIPMENT	15.239	150.42	150.53	156.25	156.20	156.26	161.61	161.69	163.03	163.12	163.49	166.62	169.36	169.36
MANUFACTURE OF FURNITURE	13.868	162.51	163.10	164.29	167.73	167.86	169.44	169.67	171.06	171.06	172.42	172.63	172.17	171.94
MANUFACTURE OF FOOD PRODUCTS	364.960	209.47	210.34	206.89	202.91	202.19	200.37	201.99	199.74	197.71	200.95	200.79	195.88	198.31
Processing and Preserving of meat	8.219	230.18	230.18	230.18	230.18	247.05	247.05	247.25	248.48	248.48	248.48	248.26	248.26	248.26
Processing & Preserving of Fish, Crustaceans and Molluscs	19.899	316.24	334.03	317.82	303.53	312.59	315.35	338.07	307.22	287.02	287.01	260.00	201.95	226.23
Manufacture of Vegetable and Animal Oils and Fats	79.421	216.22	213.08	213.17	212.05	207.05	206.41	207.75	209.47	210.14	210.80	210.88	208.20	209.70

Industry Group	Weight	Sep-17	Oct-17	Nov-17	Dec-17	Jan-18	Feb-18	Mar-18	Apr-18	May-18	Jun-18	Jul-18	Aug-18	Sep-18
Manufacture of Dairy Products	5.625	161.96	161.96	161.96	161.96	161.96	161.96	161.96	161.96	161.96	162.89	162.89	162.89	162.89
Manufacture of Grain Milling products	82.113	180.26	177.92	177.01	168.36	165.44	159.18	158.92	158.24	159.08	164.98	162.54	162.90	165.43
Manufacture of Bakery products	25.197	167.58	167.58	167.80	168.23	170.12	171.92	171.92	171.92	171.92	172.11	172.11	172.27	172.27
Manufacture of Sugar	56.645	202.83	201.53	194.99	187.69	181.14	172.58	170.21	174.39	178.67	198.30	217.31	222.37	226.39
Coffee Processing	46.351	202.27	202.40	199.27	204.63	204.94	201.63	190.19	198.22	196.53	193.46	194.10	187.57	182.57
Tea Processing	28.588	166.47	167.60	165.80	156.74	156.24	161.55	161.90	159.95	154.20	152.28	146.02	141.59	137.17
Manufacture of Prepared Animal Feeds	12.901	260.73	260.73	260.73	260.73	260.73	260.73	260.73	260.73	260.73	260.73	260.73	260.73	260.73
<b>MANUFACTURE OF BEVERAGES</b>	<b>77.507</b>	<b>174.57</b>	<b>175.23</b>	<b>175.45</b>	<b>175.08</b>	<b>167.78</b>	<b>167.80</b>	<b>167.88</b>	<b>168.37</b>	<b>168.75</b>	<b>170.40</b>	<b>168.64</b>	<b>169.23</b>	<b>170.45</b>
Distilling, rectifying and blending of spirits	2.606	179.66	179.35	180.04	177.47	175.94	177.26	172.37	173.02	173.02	175.20	177.33	177.05	178.63
Manufacture of Malt Liquors and Malt	32.174	159.58	159.58	159.58	159.58	159.58	159.58	159.58	159.58	159.58	159.58	159.58	162.14	162.74
Manufacture of Soft Drinks, Production of Mineral waters and Other bottled waters	42.728	185.06	186.22	186.53	186.06	173.28	173.23	173.69	174.52	175.19	177.96	174.75	174.03	175.69
<b>MANUFACTURE OF TOBACCO PRODUCTS</b>	<b>25.344</b>	<b>130.97</b>	<b>131.97</b>	<b>131.99</b>	<b>131.58</b>	<b>132.03</b>	<b>131.96</b>	<b>132.55</b>	<b>133.54</b>	<b>134.32</b>	<b>137.34</b>	<b>135.21</b>	<b>134.39</b>	<b>136.28</b>
Manufacture of Tobacco Products	25.344	130.97	131.97	131.99	131.58	132.03	131.96	132.55	133.54	134.32	137.34	135.21	134.39	136.28
<b>MANUFACTURE OF TEXTILES</b>	<b>19.225</b>	<b>216.06</b>	<b>207.80</b>	<b>207.80</b>	<b>207.80</b>	<b>207.80</b>	<b>214.37</b>	<b>214.37</b>	<b>214.37</b>	<b>214.37</b>	<b>219.31</b>	<b>219.31</b>	<b>221.84</b>	<b>221.84</b>
Manufacture of made-up textile articles, except apparel	19.225	216.06	207.80	207.80	207.80	207.80	214.37	214.37	214.37	214.37	219.31	219.31	221.84	221.84
<b>MANUFACTURE OF WEARING APPAREL</b>	<b>55.243</b>	<b>206.88</b>	<b>204.73</b>	<b>204.73</b>	<b>204.73</b>	<b>204.50</b>	<b>207.06</b>	<b>207.59</b>	<b>207.59</b>	<b>207.59</b>	<b>208.83</b>	<b>209.53</b>	<b>210.16</b>	<b>210.16</b>
Manufacture of wearing apparel, except fur apparel	55.243	206.88	204.73	204.73	204.73	204.50	207.06	207.59	207.59	207.59	208.83	209.53	210.16	210.16
<b>MANUFACTURE OF LEATHER &amp; RELATED PRODUCTS</b>	<b>15.917</b>	<b>194.63</b>	<b>196.62</b>	<b>198.75</b>	<b>212.33</b>	<b>206.98</b>	<b>198.79</b>	<b>218.71</b>	<b>212.54</b>	<b>208.93</b>	<b>198.37</b>	<b>196.68</b>	<b>182.26</b>	<b>181.27</b>
Tanning and dressing of leather; dressing and dyeing of fur	11.844	203.32	205.23	207.84	224.21	216.69	206.64	230.82	223.43	219.06	206.12	204.03	185.75	184.47
Manufacture of footwear	4.073	163.13	165.57	165.57	165.57	171.24	171.24	171.24	171.24	171.24	171.24	171.24	171.24	171.24
<b>MANUFACTURE OF WOOD AND PRODUCTS OF WOOD, CORK, EXCEPT FURNITURE</b>	<b>7.316</b>	<b>163.01</b>	<b>163.31</b>	<b>162.19</b>	<b>159.06</b>	<b>155.11</b>	<b>153.57</b>	<b>153.97</b>	<b>155.90</b>	<b>156.12</b>	<b>158.25</b>	<b>157.66</b>	<b>157.57</b>	<b>157.77</b>
Manufacture of Builders' Carpentry & Joinery	7.316	163.01	163.31	162.19	159.06	155.11	153.57	153.97	155.90	156.12	158.25	157.66	157.57	157.77
<b>MANUFACTURE OF PAPER &amp; PAPER PRODUCTS</b>	<b>15.858</b>	<b>185.33</b>	<b>188.10</b>	<b>188.06</b>	<b>191.41</b>	<b>191.90</b>	<b>192.00</b>	<b>192.83</b>	<b>195.34</b>	<b>196.10</b>	<b>205.05</b>	<b>197.18</b>	<b>195.98</b>	<b>196.03</b>
Manufacture of pulp, paper and paperboard	9.068	213.33	216.01	215.97	220.48	221.59	221.26	222.42	225.23	226.26	238.65	226.97	225.80	225.82
Manufacture of corrugated paper and paperboard and of containers of paper and paperboard	2.931	139.39	147.64	147.64	147.64	144.84	146.20	146.20	146.20	146.20	145.50	147.14	146.13	146.13

Industry Group	Weight	Sep-17	Oct-17	Nov-17	Dec-17	Jan-18	Feb-18	Mar-18	Apr-18	May-18	Jun-18	Jul-18	Aug-18	Sep-18
Manufacture of other articles of paper and paperboard	3.860	127.77	127.23	127.23	127.89	128.39	128.38	128.50	133.51	133.66	135.90	135.16	133.34	133.16
<b>PRINTING AND REPRODUCTION OF RECORDED MEDIA</b>	<b>25.329</b>	<b>158.13</b>	<b>158.16</b>	<b>157.66</b>	<b>159.37</b>	<b>154.22</b>	<b>156.88</b>	<b>156.90</b>	<b>157.07</b>	<b>157.67</b>	<b>159.40</b>	<b>155.31</b>	<b>155.28</b>	<b>155.35</b>
Printing	25.329	158.13	158.16	157.66	159.37	154.22	156.88	156.90	157.07	157.67	159.40	155.31	155.28	155.35
<b>MANUFACTURE OF CHEMICALS &amp; CHEMICAL PRODUCTS</b>	<b>72.487</b>	<b>169.61</b>	<b>167.32</b>	<b>167.33</b>	<b>167.70</b>	<b>167.01</b>	<b>167.60</b>	<b>169.98</b>	<b>172.62</b>	<b>172.94</b>	<b>173.89</b>	<b>172.85</b>	<b>173.33</b>	<b>174.13</b>
Manufacture of paints, varnishes and similar coatings, printing ink and mastics	10.065	150.36	150.74	150.74	150.74	151.29	152.27	152.27	159.07	159.07	160.63	160.63	160.63	160.63
Manufacture of Soap, Detergents, cleaning and Polishing preparations	49.967	177.51	174.40	174.41	174.91	173.93	174.57	177.73	179.81	180.25	181.12	179.71	178.82	179.92
Manufacture of Other chemical Products n.e.c	12.456	147.69	147.83	147.83	147.83	147.83	147.83	147.83	150.16	150.16	151.18	151.18	159.37	159.37
<b>MANUFACTURE OF PHARMACEUTICALS, MEDICINAL CHEMICAL &amp; BOTANICAL PRODUCTS</b>	<b>23.736</b>	<b>175.88</b>	<b>176.69</b>	<b>176.73</b>	<b>180.20</b>	<b>182.29</b>	<b>189.89</b>	<b>190.33</b>	<b>190.65</b>	<b>191.23</b>	<b>203.92</b>	<b>208.76</b>	<b>208.67</b>	<b>209.42</b>
Manufacture of Pharmaceuticals, medicinal chemical and botanical products	23.736	175.88	176.69	176.73	180.20	182.29	189.89	190.33	190.65	191.23	203.92	208.76	208.67	209.42
<b>MANUFACTURE OF RUBBER &amp; PLASTIC PRODUCTS</b>	<b>26.455</b>	<b>155.83</b>	<b>154.48</b>	<b>154.48</b>	<b>153.09</b>	<b>154.84</b>	<b>155.40</b>	<b>155.48</b>	<b>157.64</b>	<b>157.64</b>	<b>158.78</b>	<b>160.87</b>	<b>160.87</b>	<b>160.30</b>
Manufacture of Plastic products	26.455	155.83	154.48	154.48	153.09	154.84	155.40	155.48	157.64	157.64	158.78	160.87	160.87	160.30
<b>MANUFACTURE OF OTHER NON-METALLIC MINERAL PRODUCTS</b>	<b>137.550</b>	<b>135.04</b>	<b>133.34</b>	<b>133.35</b>	<b>133.17</b>	<b>133.94</b>	<b>134.88</b>	<b>135.71</b>	<b>136.63</b>	<b>137.16</b>	<b>127.06</b>	<b>126.63</b>	<b>124.85</b>	<b>123.90</b>
Manufacture of Clay Building Materials	58.241	120.56	119.52	119.52	119.52	119.52	120.74	120.74	120.74	121.71	121.71	121.71	121.71	121.71
Manufacture of Cement, Lime and Plaster	60.121	146.83	144.77	144.79	144.46	145.70	146.46	147.73	149.33	149.94	129.19	126.87	122.71	120.43
Manufacture of Articles of Concrete, cement and plaster	19.188	134.22	132.29	132.29	132.22	133.16	134.11	135.35	135.93	135.16	135.35	139.06	139.06	139.06
<b>MANUFACTURE OF BASIC METALS</b>	<b>14.534</b>	<b>168.80</b>	<b>173.74</b>	<b>175.72</b>	<b>188.51</b>	<b>195.61</b>	<b>188.61</b>	<b>192.59</b>	<b>194.92</b>	<b>193.96</b>	<b>195.22</b>	<b>191.43</b>	<b>189.44</b>	<b>191.08</b>
Manufacture of basic iron and steel	14.534	168.80	173.74	175.72	188.51	195.61	188.61	192.59	194.92	193.96	195.22	191.43	189.44	191.08
<b>MANUFACTURE OF FABRICATED METAL PRODUCTS,EXCEPT MACHINERY AND EQUIPMENT</b>	<b>10.831</b>	<b>169.32</b>	<b>170.02</b>	<b>170.62</b>	<b>170.89</b>	<b>173.98</b>	<b>171.25</b>	<b>173.25</b>	<b>170.53</b>	<b>170.95</b>	<b>175.44</b>	<b>173.50</b>	<b>171.89</b>	<b>175.41</b>
Manufacture of Other Fabricated Metals n.e.c	10.831	169.32	170.02	170.62	170.89	173.98	171.25	173.25	170.53	170.95	175.44	173.50	171.89	175.41
<b>MANUFACTURE OF ELECTRICAL EQUIPMENT</b>	<b>15.239</b>	<b>150.42</b>	<b>150.53</b>	<b>156.25</b>	<b>156.20</b>	<b>156.26</b>	<b>161.61</b>	<b>161.69</b>	<b>163.03</b>	<b>163.12</b>	<b>163.49</b>	<b>166.62</b>	<b>169.36</b>	<b>169.36</b>
Manufacture of Batteries and Accumulators	4.384	168.99	168.99	168.99	168.99	168.99	184.16	184.16	184.16	184.16	184.16	184.16	191.43	191.43
Manufacture of other electronic and electric wires and cables	10.856	141.46	141.63	150.48	150.40	150.48	150.47	150.59	152.74	152.89	153.47	158.39	158.60	158.60
<b>MANUFACTURE OF FURNITURE</b>	<b>13.868</b>	<b>162.51</b>	<b>163.10</b>	<b>164.29</b>	<b>167.73</b>	<b>167.86</b>	<b>169.44</b>	<b>169.67</b>	<b>171.06</b>	<b>171.06</b>	<b>172.42</b>	<b>172.63</b>	<b>172.17</b>	<b>171.94</b>

Industry Group	Weight	Sep-17	Oct-17	Nov-17	Dec-17	Jan-18	Feb-18	Mar-18	Apr-18	May-18	Jun-18	Jul-18	Aug-18	Sep-18
Manufacture of Furniture	13.868	162.51	163.10	164.29	167.73	167.86	169.44	169.67	171.06	171.06	172.42	172.63	172.17	171.94
<b>PPI-UTILITIES</b>	<b>78.600</b>	<b>184.94</b>	<b>186.10</b>	<b>186.18</b>	<b>185.80</b>	<b>186.23</b>	<b>186.80</b>	<b>187.13</b>	<b>188.83</b>	<b>189.42</b>	<b>192.90</b>	<b>186.33</b>	<b>190.75</b>	<b>191.44</b>
Water collection, treatment and supply	18.284	167.93	167.93	167.93	167.93	167.93	167.93	167.93	167.93	167.93	167.93	171.80	171.80	171.80
Electricity power generation	60.316	189.50	190.94	191.04	190.58	191.10	191.80	192.22	194.31	195.03	199.28	190.30	195.79	196.64

**Table1b: Annual Changes in Producer Price Index-Manufacturing and Utilities (PPI-M&U), Sept 2017 to Sept 2018**

Base period: July 2009 to June 2010=100

Industry Group	Weight	Sep-17	Oct-17	Nov-17	Dec-17	Jan-18	Feb-18	Mar-18	Apr-18	May-18	Jun-18	Jul-18	Aug-18	Sep-18
PPI-MANUFACTURING AND UTILITIES (PPI -M&U)	1000.000	7.0	6.7	4.1	2.1	1.3	0.7	0.2	0.3	-0.8	1.2	-0.6	-2.3	-1.7
PPI-MANUFACTURING	921.400	6.7	6.5	3.8	1.7	0.8	0.1	0.1	0.1	-1.2	0.8	-0.9	-3.0	-2.1
PPI-UTILITIES	78.600	11.0	10.1	8.2	7.7	8.3	7.8	2.0	2.8	3.1	5.5	2.6	4.8	3.5
PPI-MANUFACTURING	921.400	6.7	6.5	3.8	1.7	0.8	0.1	0.1	0.1	-1.2	0.8	-0.9	-3.0	-2.1
MANUFACTURE OF FOOD PRODUCTS	364.960	9.3	9.7	5.2	1.2	0.0	-1.9	-1.5	-2.0	-4.1	-1.5	-3.0	-6.7	-5.3
MANUFACTURE OF BEVERAGES	77.507	8.2	8.1	7.3	6.4	1.4	1.5	0.5	0.6	0.8	1.9	-3.3	-3.1	-2.4
MANUFACTURE OF TOBACCO PRODUCTS	25.344	2.1	1.7	-0.9	-2.0	-1.9	-1.5	-1.3	-1.0	-0.5	2.4	3.2	2.5	4.1
MANUFACTURE OF TEXTILES	19.225	7.9	3.8	3.8	1.2	1.2	3.5	-6.0	-2.2	-2.2	0.0	1.5	2.7	2.7
MANUFACTURE OF WEARING APPAREL	55.243	0.8	-0.3	-0.4	-0.9	-0.3	1.3	-0.1	3.1	3.1	3.7	1.5	1.8	1.6
MANUFACTURE OF LEATHER & RELATED PRODUCTS	15.917	-4.4	-1.3	0.0	6.1	5.3	-2.0	8.0	6.0	-3.1	-2.7	-10.8	-11.1	-6.9
MANUFACTURE OF WOOD AND PRODUCTS OF WOOD, CORK, EXCEPT FURNITURE	7.316	3.2	2.7	1.2	-0.8	-2.7	-3.6	-3.4	-2.3	-3.7	-2.3	-3.3	-3.4	-3.2
MANUFACTURE OF PAPER & PAPER PRODUCTS	15.858	4.2	5.8	3.7	4.3	4.3	5.6	5.6	6.5	6.8	12.6	7.5	6.0	5.8
PRINTING AND REPRODUCTION OF RECORDED MEDIA	25.329	0.9	0.9	0.9	2.2	-1.3	0.4	-0.3	-0.2	-1.0	0.2	-2.0	-2.0	-1.8
MANUFACTURE OF CHEMICALS & CHEMICAL PRODUCTS	72.487	4.0	2.0	-0.4	-1.0	1.0	3.5	4.4	1.7	1.9	4.9	3.4	2.1	2.7
MANUFACTURE OF PHARMACEUTICALS, MEDICINAL CHEMICAL & BOTANICAL PRODUCTS	23.736	0.1	0.0	-1.3	0.4	1.3	5.7	6.2	5.1	5.0	16.0	18.8	18.4	19.1
MANUFACTURE OF RUBBER & PLASTIC PRODUCTS	26.455	0.9	0.9	0.6	-0.3	-0.5	-0.1	-0.1	1.2	1.2	2.0	3.4	3.4	2.9
MANUFACTURE OF OTHER NON-METALLIC MINERAL PRODUCTS	137.550	0.2	-1.6	-2.4	-2.9	-2.5	-1.7	-1.2	-1.4	0.4	-6.3	-6.1	-7.5	-8.2
MANUFACTURE OF BASIC METALS	14.534	19.5	22.0	19.5	26.4	29.8	22.7	22.8	24.0	24.6	25.5	22.3	15.5	13.2
MANUFACTURE OF FABRICATED METAL PRODUCTS,EXCEPT MACHINERY AND EQUIPMENT	10.831	11.7	10.6	9.7	9.0	8.3	6.3	9.4	9.7	10.8	13.8	7.7	4.8	3.6
MANUFACTURE OF ELECTRICAL EQUIPMENT	15.239	2.4	2.3	6.0	3.6	0.3	3.8	3.8	4.6	4.6	4.9	6.9	8.7	12.6
MANUFACTURE OF FURNITURE	13.868	8.5	8.7	8.8	8.3	8.4	8.0	7.4	7.2	7.2	8.1	6.7	6.6	5.8
MANUFACTURE OF FOOD PRODUCTS	364.960	9.3	9.7	5.2	1.2	0.0	-1.9	-1.5	-2.0	-4.1	-1.5	-3.0	-6.7	-5.3
Processing and Preserving of meat	8.219	5.8	4.2	4.2	4.2	12.3	12.3	12.4	9.6	8.0	8.0	7.9	7.9	7.9
Processing & Preserving of Fish, Crustaceans and Molluscs	19.899	12.5	19.7	11.3	6.8	2.7	0.5	6.5	-0.6	-7.4	-7.4	-16.6	-37.0	-28.5

Industry Group	Weight	Sep-17	Oct-17	Nov-17	Dec-17	Jan-18	Feb-18	Mar-18	Apr-18	May-18	Jun-18	Jul-18	Aug-18	Sep-18
Manufacture of Vegetable and Animal Oils and Fats	79.421	3.5	5.0	2.4	-0.6	-3.9	-4.0	-3.8	-0.4	-1.6	-0.4	-2.4	-3.7	-3.0
Manufacture of Dairy Products	5.625	23.4	23.4	23.4	23.4	18.0	15.6	15.2	15.1	14.4	15.1	2.1	2.1	0.6
Manufacture of Grain Milling products	82.113	26.2	24.1	22.7	15.8	11.8	4.0	2.7	-0.1	-3.1	-0.9	-7.5	-9.5	-8.2
Manufacture of Bakery products	25.197	6.0	6.0	6.1	6.4	5.7	6.8	6.7	6.3	6.3	6.4	4.9	3.9	2.8
Manufacture of Sugar	56.645	15.1	11.3	5.0	-0.7	-5.5	-11.1	-13.1	-12.3	-12.2	-2.2	7.1	9.8	11.6
Coffee Processing	46.351	4.0	-0.9	-4.1	-7.5	-0.9	-2.1	-6.7	-1.4	-2.8	-2.1	-1.8	-8.6	-9.7
Tea Processing	28.588	25.4	28.2	22.4	16.1	14.0	15.9	16.1	9.9	3.2	0.7	-5.5	-11.9	-17.6
Manufacture of Prepared Animal Feeds	12.901	-2.7	-1.3	-9.0	-9.0	-10.2	-10.1	-10.1	-10.5	-9.8	-1.2	0.1	0.1	0.0
<b>MANUFACTURE OF BEVERAGES</b>	<b>77.507</b>	<b>8.2</b>	<b>8.1</b>	<b>7.3</b>	<b>6.4</b>	<b>1.4</b>	<b>1.5</b>	<b>0.5</b>	<b>0.6</b>	<b>0.8</b>	<b>1.9</b>	<b>-3.3</b>	<b>-3.1</b>	<b>-2.4</b>
Distilling, rectifying and blending of spirits	2.606	14.1	14.5	14.6	12.7	9.5	8.3	5.4	5.0	5.0	1.6	1.6	-1.1	-0.6
Manufacture of Malt Liquors and Malt	32.174	0.0	0.0	0.0	0.0	0.0	0.0	0.0	0.0	0.0	0.0	0.0	1.6	2.0
Manufacture of Soft Drinks, Production of Mineral waters and Other bottled waters	42.728	13.5	13.4	11.7	10.3	1.8	2.1	0.6	0.8	1.1	3.1	-5.5	-6.0	-5.1
<b>MANUFACTURE OF TOBACCO PRODUCTS</b>	<b>25.344</b>	<b>2.1</b>	<b>1.7</b>	<b>-0.9</b>	<b>-2.0</b>	<b>-1.9</b>	<b>-1.5</b>	<b>-1.3</b>	<b>-1.0</b>	<b>-0.5</b>	<b>2.4</b>	<b>3.2</b>	<b>2.5</b>	<b>4.1</b>
Manufacture of Tobacco Products	25.344	2.1	1.7	-0.9	-2.0	-1.9	-1.5	-1.3	-1.0	-0.5	2.4	3.2	2.5	4.1
<b>MANUFACTURE OF TEXTILES</b>	<b>19.225</b>	<b>7.9</b>	<b>3.8</b>	<b>3.8</b>	<b>1.2</b>	<b>1.2</b>	<b>3.5</b>	<b>-6.0</b>	<b>-2.2</b>	<b>-2.2</b>	<b>0.0</b>	<b>1.5</b>	<b>2.7</b>	<b>2.7</b>
Manufacture of made-up textile articles, except apparel	19.225	7.9	3.8	3.8	1.2	1.2	3.5	-6.0	-2.2	-2.2	0.0	1.5	2.7	2.7
<b>MANUFACTURE OF WEARING APPAREL</b>	<b>55.243</b>	<b>0.8</b>	<b>-0.3</b>	<b>-0.4</b>	<b>-0.9</b>	<b>-0.3</b>	<b>1.3</b>	<b>-0.1</b>	<b>3.1</b>	<b>3.1</b>	<b>3.7</b>	<b>1.5</b>	<b>1.8</b>	<b>1.6</b>
Manufacture of wearing apparel, except fur apparel	55.243	0.8	-0.3	-0.4	-0.9	-0.3	1.3	-0.1	3.1	3.1	3.7	1.5	1.8	1.6
<b>MANUFACTURE OF LEATHER &amp; RELATED PRODUCTS</b>	<b>15.917</b>	<b>-4.4</b>	<b>-1.3</b>	<b>0.0</b>	<b>6.1</b>	<b>5.3</b>	<b>-2.0</b>	<b>8.0</b>	<b>6.0</b>	<b>-3.1</b>	<b>-2.7</b>	<b>-10.8</b>	<b>-11.1</b>	<b>-6.9</b>
Tanning and dressing of leather; dressing and dyeing of fur	11.844	-5.2	-2.0	-0.5	6.9	5.5	-2.7	8.9	6.7	-3.7	-3.3	-12.7	-13.7	-9.3
Manufacture of footwear	4.073	1.5	3.0	3.0	0.5	4.0	1.9	1.9	1.9	0.7	0.7	3.4	3.4	5.0
<b>MANUFACTURE OF WOOD AND PRODUCTS OF WOOD, CORK, EXCEPT FURNITURE</b>	<b>7.316</b>	<b>3.2</b>	<b>2.7</b>	<b>1.2</b>	<b>-0.8</b>	<b>-2.7</b>	<b>-3.6</b>	<b>-3.4</b>	<b>-2.3</b>	<b>-3.7</b>	<b>-2.3</b>	<b>-3.3</b>	<b>-3.4</b>	<b>-3.2</b>
Manufacture of Builders' Carpentry & Joinery	7.316	3.2	2.7	1.2	-0.8	-2.7	-3.6	-3.4	-2.3	-3.7	-2.3	-3.3	-3.4	-3.2
<b>MANUFACTURE OF PAPER &amp; PAPER PRODUCTS</b>	<b>15.858</b>	<b>4.2</b>	<b>5.8</b>	<b>3.7</b>	<b>4.3</b>	<b>4.3</b>	<b>5.6</b>	<b>5.6</b>	<b>6.5</b>	<b>6.8</b>	<b>12.6</b>	<b>7.5</b>	<b>6.0</b>	<b>5.8</b>
Manufacture of pulp, paper and paperboard	9.068	4.7	5.6	3.2	4.0	4.1	5.4	5.4	6.1	6.4	13.2	7.1	6.2	5.9



Industry Group	Weight	Sep-17	Oct-17	Nov-17	Dec-17	Jan-18	Feb-18	Mar-18	Apr-18	May-18	Jun-18	Jul-18	Aug-18	Sep-18
Manufacture of corrugated paper and paperboard and of containers of paper and paperboard	2.931	12.8	18.9	17.1	16.4	14.0	15.7	16.5	16.4	16.4	15.8	14.2	4.8	4.8
Manufacture of other articles of paper and paperboard	3.860	-5.2	-2.2	-2.3	-1.9	-1.6	-1.5	-1.5	2.3	3.9	6.6	5.8	4.4	4.2
<b>PRINTING AND REPRODUCTION OF RECORDED MEDIA</b>	<b>25.329</b>	<b>0.9</b>	<b>0.9</b>	<b>0.9</b>	<b>2.2</b>	<b>-1.3</b>	<b>0.4</b>	<b>-0.3</b>	<b>-0.2</b>	<b>-1.0</b>	<b>0.2</b>	<b>-2.0</b>	<b>-2.0</b>	<b>-1.8</b>
Printing	25.329	0.9	0.9	0.9	2.2	-1.3	0.4	-0.3	-0.2	-1.0	0.2	-2.0	-2.0	-1.8
<b>MANUFACTURE OF CHEMICALS &amp; CHEMICAL PRODUCTS</b>	<b>72.487</b>	<b>4.0</b>	<b>2.0</b>	<b>-0.4</b>	<b>-1.0</b>	<b>1.0</b>	<b>3.5</b>	<b>4.4</b>	<b>1.7</b>	<b>1.9</b>	<b>4.9</b>	<b>3.4</b>	<b>2.1</b>	<b>2.7</b>
Manufacture of paints, varnishes and similar coatings, printing ink and mastics	10.065	2.6	2.6	2.6	1.5	2.2	2.3	1.4	5.8	5.8	6.8	6.8	6.8	6.8
Manufacture of Soap, Detergents, cleaning and Polishing preparations	49.967	4.4	1.8	-1.2	-1.8	0.4	3.6	4.9	0.7	1.0	4.2	3.1	0.6	1.4
Manufacture of Other chemical Products n.e.c	12.456	2.1	2.2	2.2	2.2	3.3	3.4	3.3	4.9	4.9	8.4	2.5	7.9	7.9
<b>MANUFACTURE OF PHARMACEUTICALS, MEDICINAL CHEMICAL &amp; BOTANICAL PRODUCTS</b>	<b>23.736</b>	<b>0.1</b>	<b>0.0</b>	<b>-1.3</b>	<b>0.4</b>	<b>1.3</b>	<b>5.7</b>	<b>6.2</b>	<b>5.1</b>	<b>5.0</b>	<b>16.0</b>	<b>18.8</b>	<b>18.4</b>	<b>19.1</b>
Manufacture of Pharmaceuticals, medicinal chemical and botanical products	23.736	0.1	0.0	-1.3	0.4	1.3	5.7	6.2	5.1	5.0	16.0	18.8	18.4	19.1
<b>MANUFACTURE OF RUBBER &amp; PLASTIC PRODUCTS</b>	<b>26.455</b>	<b>0.9</b>	<b>0.9</b>	<b>0.6</b>	<b>-0.3</b>	<b>-0.5</b>	<b>-0.1</b>	<b>-0.1</b>	<b>1.2</b>	<b>1.2</b>	<b>2.0</b>	<b>3.4</b>	<b>3.4</b>	<b>2.9</b>
Manufacture of Plastic products	26.455	0.9	0.9	0.6	-0.3	-0.5	-0.1	-0.1	1.2	1.2	2.0	3.4	3.4	2.9
<b>MANUFACTURE OF OTHER NON-METALLIC MINERAL PRODUCTS</b>	<b>137.550</b>	<b>0.2</b>	<b>-1.6</b>	<b>-2.4</b>	<b>-2.9</b>	<b>-2.5</b>	<b>-1.7</b>	<b>-1.2</b>	<b>-1.4</b>	<b>0.4</b>	<b>-6.3</b>	<b>-6.1</b>	<b>-7.5</b>	<b>-8.2</b>
Manufacture of Clay Building Materials	58.241	-0.9	-1.8	-1.8	-1.8	-2.1	-1.1	-1.1	-0.6	1.7	1.7	1.3	1.3	1.0
Manufacture of Cement, Lime and Plaster	60.121	0.9	-1.1	-2.7	-3.4	-2.7	-1.9	-1.2	-0.4	1.7	-11.2	-13.6	-16.5	-18.0
Manufacture of Articles of Concrete, cement and plaster	19.188	-0.2	-2.6	-2.6	-3.0	-2.5	-1.8	-0.9	-6.1	-6.7	-6.5	3.7	3.7	3.6
<b>MANUFACTURE OF BASIC METALS</b>	<b>14.534</b>	<b>19.5</b>	<b>22.0</b>	<b>19.5</b>	<b>26.4</b>	<b>29.8</b>	<b>22.7</b>	<b>22.8</b>	<b>24.0</b>	<b>24.6</b>	<b>25.5</b>	<b>22.3</b>	<b>15.5</b>	<b>13.2</b>
Manufacture of basic iron and steel	14.534	19.5	22.0	19.5	26.4	29.8	22.7	22.8	24.0	24.6	25.5	22.3	15.5	13.2
<b>MANUFACTURE OF FABRICATED METAL PRODUCTS,EXCEPT MACHINERY AND EQUIPMENT</b>	<b>10.831</b>	<b>11.7</b>	<b>10.6</b>	<b>9.7</b>	<b>9.0</b>	<b>8.3</b>	<b>6.3</b>	<b>9.4</b>	<b>9.7</b>	<b>10.8</b>	<b>13.8</b>	<b>7.7</b>	<b>4.8</b>	<b>3.6</b>
Manufacture of Other Fabricated Metals n.e.c	10.831	11.7	10.6	9.7	9.0	8.3	6.3	9.4	9.7	10.8	13.8	7.7	4.8	3.6
<b>MANUFACTURE OF ELECTRICAL EQUIPMENT</b>	<b>15.239</b>	<b>2.4</b>	<b>2.3</b>	<b>6.0</b>	<b>3.6</b>	<b>0.3</b>	<b>3.8</b>	<b>3.8</b>	<b>4.6</b>	<b>4.6</b>	<b>4.9</b>	<b>6.9</b>	<b>8.7</b>	<b>12.6</b>
Manufacture of Batteries and Accumulators	4.384	0.0	0.0	0.0	0.0	0.0	9.0	9.0	9.0	9.0	9.0	9.0	13.3	13.3
Manufacture of other electronic and electric wires and cables	10.856	4.1	4.0	10.1	5.8	0.4	0.6	0.6	1.9	1.9	2.4	5.7	5.8	12.1

Industry Group	Weight	Sep-17	Oct-17	Nov-17	Dec-17	Jan-18	Feb-18	Mar-18	Apr-18	May-18	Jun-18	Jul-18	Aug-18	Sep-18
<b>MANUFACTURE OF FURNITURE</b>	<b>13.868</b>	<b>8.5</b>	<b>8.7</b>	<b>8.8</b>	<b>8.3</b>	<b>8.4</b>	<b>8.0</b>	<b>7.4</b>	<b>7.2</b>	<b>7.2</b>	<b>8.1</b>	<b>6.7</b>	<b>6.6</b>	<b>5.8</b>
Manufacture of Furniture	13.868	8.5	8.7	8.8	8.3	8.4	8.0	7.4	7.2	7.2	8.1	6.7	6.6	5.8
<b>PPI-UTILITIES</b>	<b>78.600</b>	<b>11.0</b>	<b>10.1</b>	<b>8.2</b>	<b>7.7</b>	<b>8.3</b>	<b>7.8</b>	<b>2.0</b>	<b>2.8</b>	<b>3.1</b>	<b>5.5</b>	<b>2.6</b>	<b>4.8</b>	<b>3.5</b>
Water collection, treatment and supply	18.284	-0.4	-0.4	-0.4	-0.4	-0.4	-4.1	-4.1	-4.1	-4.1	-4.1	2.3	2.3	2.3
Electricity power generation	60.316	14.2	12.9	10.4	9.8	10.5	11.1	3.5	4.4	4.8	7.7	2.7	5.3	3.8

**Table1c: Monthly Changes in Producer Price Index-Manufacturing and Utilities (PPI-M&U), Sept 2017 to Sept 2018**

Base period: July 2009 to June 2010=100

Industry Group	Weight	Sep-17	Oct-17	Nov-17	Dec-17	Jan-18	Feb-18	Mar-18	Apr-18	May-18	Jun-18	Jul-18	Aug-18	Sep-18
PPI-MANUFACTURING AND UTILITIES (PPI -M&U)	1000.000	0.0	0.0	-0.8	-0.7	-0.5	-0.2	0.8	-0.2	-0.4	1.0	-0.5	-1.0	0.7
PPI-MANUFACTURING	921.400	-0.2	0.0	-0.8	-0.7	-0.5	-0.2	0.8	-0.3	-0.5	1.0	-0.2	-1.4	0.7
PPI-UTILITIES	78.600	1.6	0.6	0.0	-0.2	0.2	0.3	0.2	0.9	0.3	1.8	-3.4	2.4	0.4
PPI-MANUFACTURING	921.400	-0.2	0.0	-0.8	-0.7	-0.5	-0.2	0.8	-0.3	-0.5	1.0	-0.2	-1.4	0.7
MANUFACTURE OF FOOD PRODUCTS	364.960	-0.2	0.4	-1.6	-1.9	-0.4	-0.9	0.8	-1.1	-1.0	1.6	-0.1	-2.4	1.2
MANUFACTURE OF BEVERAGES	77.507	0.0	0.4	0.1	-0.2	-4.2	0.0	0.0	0.3	0.2	1.0	-1.0	0.4	0.7
MANUFACTURE OF TOBACCO PRODUCTS	25.344	-0.1	0.8	0.0	-0.3	0.3	-0.1	0.5	0.7	0.6	2.2	-1.5	-0.6	1.4
MANUFACTURE OF TEXTILES	19.225	0.0	-3.8	0.0	0.0	0.0	3.2	0.0	0.0	0.0	2.3	0.0	1.2	0.0
MANUFACTURE OF WEARING APPAREL	55.243	0.3	-1.0	0.0	0.0	-0.1	1.3	0.3	0.0	0.0	0.6	0.3	0.3	0.0
MANUFACTURE OF LEATHER & RELATED PRODUCTS	15.917	-5.0	1.0	1.1	6.8	-2.5	-4.0	10.0	-2.8	-1.7	-5.1	-0.9	-7.3	-0.5
MANUFACTURE OF WOOD AND PRODUCTS OF WOOD, CORK, EXCEPT FURNITURE	7.316	0.0	0.2	-0.7	-1.9	-2.5	-1.0	0.3	1.3	0.1	1.4	-0.4	-0.1	0.1
MANUFACTURE OF PAPER & PAPER PRODUCTS	15.858	0.3	1.5	0.0	1.8	0.3	0.1	0.4	1.3	0.4	4.6	-3.8	-0.6	0.0
PRINTING AND REPRODUCTION OF RECORDED MEDIA	25.329	-0.2	0.0	-0.3	1.1	-3.2	1.7	0.0	0.1	0.4	1.1	-2.6	0.0	0.0
MANUFACTURE OF CHEMICALS & CHEMICAL PRODUCTS	72.487	-0.1	-1.4	0.0	0.2	-0.4	0.4	1.4	1.6	0.2	0.5	-0.6	0.3	0.5
MANUFACTURE OF PHARMACEUTICALS, MEDICINAL CHEMICAL & BOTANICAL PRODUCTS	23.736	-0.2	0.5	0.0	2.0	1.2	4.2	0.2	0.2	0.3	6.6	2.4	0.0	0.4
MANUFACTURE OF RUBBER & PLASTIC PRODUCTS	26.455	0.2	-0.9	0.0	-0.9	1.1	0.4	0.1	1.4	0.0	0.7	1.3	0.0	-0.4
MANUFACTURE OF OTHER NON-METALLIC MINERAL PRODUCTS	137.550	0.1	-1.3	0.0	-0.1	0.6	0.7	0.6	0.7	0.4	-7.4	-0.3	-1.4	-0.8
MANUFACTURE OF BASIC METALS	14.534	2.9	2.9	1.1	7.3	3.8	-3.6	2.1	1.2	-0.5	0.6	-1.9	-1.0	0.9
MANUFACTURE OF FABRICATED METAL PRODUCTS,EXCEPT MACHINERY AND EQUIPMENT	10.831	3.2	0.4	0.4	0.2	1.8	-1.6	1.2	-1.6	0.2	2.6	-1.1	-0.9	2.1
MANUFACTURE OF ELECTRICAL EQUIPMENT	15.239	-3.5	0.1	3.8	0.0	0.0	3.4	0.0	0.8	0.1	0.2	1.9	1.6	0.0
MANUFACTURE OF FURNITURE	13.868	0.6	0.4	0.7	2.1	0.1	0.9	0.1	0.8	0.0	0.8	0.1	-0.3	-0.1
MANUFACTURE OF FOOD PRODUCTS	364.960	-0.2	0.4	-1.6	-1.9	-0.4	-0.9	0.8	-1.1	-1.0	1.6	-0.1	-2.4	1.2
Processing and Preserving of meat	8.219	0.0	0.0	0.0	0.0	7.3	0.0	0.1	0.5	0.0	0.0	-0.1	0.0	0.0
Processing & Preserving of Fish, Crustaceans and Molluscs	19.899	-1.4	5.6	-4.9	-4.5	3.0	0.9	7.2	-9.1	-6.6	0.0	-9.4	-22.3	12.0
Manufacture of Vegetable and Animal Oils and Fats	79.421	0.0	-1.5	0.0	-0.5	-2.4	-0.3	0.6	0.8	0.3	0.3	0.0	-1.3	0.7

Industry Group	Weight	Sep-17	Oct-17	Nov-17	Dec-17	Jan-18	Feb-18	Mar-18	Apr-18	May-18	Jun-18	Jul-18	Aug-18	Sep-18
Manufacture of Dairy Products	5.625	1.5	0.0	0.0	0.0	0.0	0.0	0.0	0.0	0.0	0.6	0.0	0.0	0.0
Manufacture of Grain Milling products	82.113	0.2	-1.3	-0.5	-4.9	-1.7	-3.8	-0.2	-0.4	0.5	3.7	-1.5	0.2	1.6
Manufacture of Bakery products	25.197	1.1	0.0	0.1	0.3	1.1	1.1	0.0	0.0	0.0	0.1	0.0	0.1	0.0
Manufacture of Sugar	56.645	0.1	-0.6	-3.2	-3.7	-3.5	-4.7	-1.4	2.5	2.5	11.0	9.6	2.3	1.8
Coffee Processing	46.351	-1.4	0.1	-1.5	2.7	0.2	-1.6	-5.7	4.2	-0.9	-1.6	0.3	-3.4	-2.7
Tea Processing	28.588	3.6	0.7	-1.1	-5.5	-0.3	3.4	0.2	-1.2	-3.6	-1.2	-4.1	-3.0	-3.1
Manufacture of Prepared Animal Feeds	12.901	0.1	0.0	0.0	0.0	0.0	0.0	0.0	0.0	0.0	0.0	0.0	0.0	0.0
<b>MANUFACTURE OF BEVERAGES</b>	<b>77.507</b>	<b>0.0</b>	<b>0.4</b>	<b>0.1</b>	<b>-0.2</b>	<b>-4.2</b>	<b>0.0</b>	<b>0.0</b>	<b>0.3</b>	<b>0.2</b>	<b>1.0</b>	<b>-1.0</b>	<b>0.4</b>	<b>0.7</b>
Distilling, rectifying and blending of spirits	2.606	0.4	-0.2	0.4	-1.4	-0.9	0.8	-2.8	0.4	0.0	1.3	1.2	-0.2	0.9
Manufacture of Malt Liquors and Malt	32.174	0.0	0.0	0.0	0.0	0.0	0.0	0.0	0.0	0.0	0.0	0.0	1.6	0.4
Manufacture of Soft Drinks, Production of Mineral waters and Other bottled waters	42.728	0.0	0.6	0.2	-0.3	-6.9	0.0	0.3	0.5	0.4	1.6	-1.8	-0.4	1.0
<b>MANUFACTURE OF TOBACCO PRODUCTS</b>	<b>25.344</b>	<b>-0.1</b>	<b>0.8</b>	<b>0.0</b>	<b>-0.3</b>	<b>0.3</b>	<b>-0.1</b>	<b>0.5</b>	<b>0.7</b>	<b>0.6</b>	<b>2.2</b>	<b>-1.5</b>	<b>-0.6</b>	<b>1.4</b>
Manufacture of Tobacco Products	25.344	-0.1	0.8	0.0	-0.3	0.3	-0.1	0.5	0.7	0.6	2.2	-1.5	-0.6	1.4
<b>MANUFACTURE OF TEXTILES</b>	<b>19.225</b>	<b>0.0</b>	<b>-3.8</b>	<b>0.0</b>	<b>0.0</b>	<b>0.0</b>	<b>3.2</b>	<b>0.0</b>	<b>0.0</b>	<b>0.0</b>	<b>2.3</b>	<b>0.0</b>	<b>1.2</b>	<b>0.0</b>
Manufacture of made-up textile articles, except apparel	19.225	0.0	-3.8	0.0	0.0	0.0	3.2	0.0	0.0	0.0	2.3	0.0	1.2	0.0
<b>MANUFACTURE OF WEARING APPAREL</b>	<b>55.243</b>	<b>0.3</b>	<b>-1.0</b>	<b>0.0</b>	<b>0.0</b>	<b>-0.1</b>	<b>1.3</b>	<b>0.3</b>	<b>0.0</b>	<b>0.0</b>	<b>0.6</b>	<b>0.3</b>	<b>0.3</b>	<b>0.0</b>
Manufacture of wearing apparel, except fur apparel	55.243	0.3	-1.0	0.0	0.0	-0.1	1.3	0.3	0.0	0.0	0.6	0.3	0.3	0.0
<b>MANUFACTURE OF LEATHER &amp; RELATED PRODUCTS</b>	<b>15.917</b>	<b>-5.0</b>	<b>1.0</b>	<b>1.1</b>	<b>6.8</b>	<b>-2.5</b>	<b>-4.0</b>	<b>10.0</b>	<b>-2.8</b>	<b>-1.7</b>	<b>-5.1</b>	<b>-0.9</b>	<b>-7.3</b>	<b>-0.5</b>
Tanning and dressing of leather; dressing and dyeing of fur	11.844	-5.6	0.9	1.3	7.9	-3.4	-4.6	11.7	-3.2	-2.0	-5.9	-1.0	-9.0	-0.7
Manufacture of footwear	4.073	-1.5	1.5	0.0	0.0	3.4	0.0	0.0	0.0	0.0	0.0	0.0	0.0	0.0
<b>MANUFACTURE OF WOOD AND PRODUCTS OF WOOD, CORK, EXCEPT FURNITURE</b>	<b>7.316</b>	<b>0.0</b>	<b>0.2</b>	<b>-0.7</b>	<b>-1.9</b>	<b>-2.5</b>	<b>-1.0</b>	<b>0.3</b>	<b>1.3</b>	<b>0.1</b>	<b>1.4</b>	<b>-0.4</b>	<b>-0.1</b>	<b>0.1</b>
Manufacture of Builders' Carpentry & Joinery	7.316	0.0	0.2	-0.7	-1.9	-2.5	-1.0	0.3	1.3	0.1	1.4	-0.4	-0.1	0.1
<b>MANUFACTURE OF PAPER &amp; PAPER PRODUCTS</b>	<b>15.858</b>	<b>0.3</b>	<b>1.5</b>	<b>0.0</b>	<b>1.8</b>	<b>0.3</b>	<b>0.1</b>	<b>0.4</b>	<b>1.3</b>	<b>0.4</b>	<b>4.6</b>	<b>-3.8</b>	<b>-0.6</b>	<b>0.0</b>
Manufacture of pulp, paper and paperboard	9.068	0.3	1.3	0.0	2.1	0.5	-0.1	0.5	1.3	0.5	5.5	-4.9	-0.5	0.0
Manufacture of corrugated paper and paperboard and of containers of paper and paperboard	2.931	0.0	5.9	0.0	0.0	-1.9	0.9	0.0	0.0	0.0	-0.5	1.1	-0.7	0.0

Industry Group	Weight	Sep-17	Oct-17	Nov-17	Dec-17	Jan-18	Feb-18	Mar-18	Apr-18	May-18	Jun-18	Jul-18	Aug-18	Sep-18
Manufacture of other articles of paper and paperboard	3.860	0.0	-0.4	0.0	0.5	0.4	0.0	0.1	3.9	0.1	1.7	-0.5	-1.3	-0.1
<b>PRINTING AND REPRODUCTION OF RECORDED MEDIA</b>	<b>25.329</b>	<b>-0.2</b>	<b>0.0</b>	<b>-0.3</b>	<b>1.1</b>	<b>-3.2</b>	<b>1.7</b>	<b>0.0</b>	<b>0.1</b>	<b>0.4</b>	<b>1.1</b>	<b>-2.6</b>	<b>0.0</b>	<b>0.0</b>
Printing	25.329	-0.2	0.0	-0.3	1.1	-3.2	1.7	0.0	0.1	0.4	1.1	-2.6	0.0	0.0
<b>MANUFACTURE OF CHEMICALS &amp; CHEMICAL PRODUCTS</b>	<b>72.487</b>	<b>-0.1</b>	<b>-1.4</b>	<b>0.0</b>	<b>0.2</b>	<b>-0.4</b>	<b>0.4</b>	<b>1.4</b>	<b>1.6</b>	<b>0.2</b>	<b>0.5</b>	<b>-0.6</b>	<b>0.3</b>	<b>0.5</b>
Manufacture of paints, varnishes and similar coatings, printing ink and mastics	10.065	0.0	0.3	0.0	0.0	0.4	0.6	0.0	4.5	0.0	1.0	0.0	0.0	0.0
Manufacture of Soap, Detergents, cleaning and Polishing preparations	49.967	-0.2	-1.8	0.0	0.3	-0.6	0.4	1.8	1.2	0.2	0.5	-0.8	-0.5	0.6
Manufacture of Other chemical Products n.e.c	12.456	0.0	0.1	0.0	0.0	0.0	0.0	0.0	1.6	0.0	0.7	0.0	5.4	0.0
<b>MANUFACTURE OF PHARMACEUTICALS, MEDICINAL CHEMICAL &amp; BOTANICAL PRODUCTS</b>	<b>23.736</b>	<b>-0.2</b>	<b>0.5</b>	<b>0.0</b>	<b>2.0</b>	<b>1.2</b>	<b>4.2</b>	<b>0.2</b>	<b>0.2</b>	<b>0.3</b>	<b>6.6</b>	<b>2.4</b>	<b>0.0</b>	<b>0.4</b>
Manufacture of Pharmaceuticals, medicinal chemical and botanical products	23.736	-0.2	0.5	0.0	2.0	1.2	4.2	0.2	0.2	0.3	6.6	2.4	0.0	0.4
<b>MANUFACTURE OF RUBBER &amp; PLASTIC PRODUCTS</b>	<b>26.455</b>	<b>0.2</b>	<b>-0.9</b>	<b>0.0</b>	<b>-0.9</b>	<b>1.1</b>	<b>0.4</b>	<b>0.1</b>	<b>1.4</b>	<b>0.0</b>	<b>0.7</b>	<b>1.3</b>	<b>0.0</b>	<b>-0.4</b>
Manufacture of Plastic products	26.455	0.2	-0.9	0.0	-0.9	1.1	0.4	0.1	1.4	0.0	0.7	1.3	0.0	-0.4
<b>MANUFACTURE OF OTHER NON-METALLIC MINERAL PRODUCTS</b>	<b>137.550</b>	<b>0.1</b>	<b>-1.3</b>	<b>0.0</b>	<b>-0.1</b>	<b>0.6</b>	<b>0.7</b>	<b>0.6</b>	<b>0.7</b>	<b>0.4</b>	<b>-7.4</b>	<b>-0.3</b>	<b>-1.4</b>	<b>-0.8</b>
Manufacture of Clay Building Materials	58.241	0.3	-0.9	0.0	0.0	0.0	1.0	0.0	0.0	0.8	0.0	0.0	0.0	0.0
Manufacture of Cement, Lime and Plaster	60.121	-0.1	-1.4	0.0	-0.2	0.9	0.5	0.9	1.1	0.4	-13.8	-1.8	-3.3	-1.9
Manufacture of Articles of Concrete, cement and plaster	19.188	0.1	-1.4	0.0	-0.1	0.7	0.7	0.9	0.4	-0.6	0.1	2.7	0.0	0.0
<b>MANUFACTURE OF BASIC METALS</b>	<b>14.534</b>	<b>2.9</b>	<b>2.9</b>	<b>1.1</b>	<b>7.3</b>	<b>3.8</b>	<b>-3.6</b>	<b>2.1</b>	<b>1.2</b>	<b>-0.5</b>	<b>0.6</b>	<b>-1.9</b>	<b>-1.0</b>	<b>0.9</b>
Manufacture of basic iron and steel	14.534	2.9	2.9	1.1	7.3	3.8	-3.6	2.1	1.2	-0.5	0.6	-1.9	-1.0	0.9
<b>MANUFACTURE OF FABRICATED METAL PRODUCTS,EXCEPT MACHINERY AND EQUIPMENT</b>	<b>10.831</b>	<b>3.2</b>	<b>0.4</b>	<b>0.4</b>	<b>0.2</b>	<b>1.8</b>	<b>-1.6</b>	<b>1.2</b>	<b>-1.6</b>	<b>0.2</b>	<b>2.6</b>	<b>-1.1</b>	<b>-0.9</b>	<b>2.1</b>
Manufacture of Other Fabricated Metals n.e.c	10.831	3.2	0.4	0.4	0.2	1.8	-1.6	1.2	-1.6	0.2	2.6	-1.1	-0.9	2.1
<b>MANUFACTURE OF ELECTRICAL EQUIPMENT</b>	<b>15.239</b>	<b>-3.5</b>	<b>0.1</b>	<b>3.8</b>	<b>0.0</b>	<b>0.0</b>	<b>3.4</b>	<b>0.0</b>	<b>0.8</b>	<b>0.1</b>	<b>0.2</b>	<b>1.9</b>	<b>1.6</b>	<b>0.0</b>
Manufacture of Batteries and Accumulators	4.384	0.0	0.0	0.0	0.0	0.0	9.0	0.0	0.0	0.0	0.0	0.0	4.0	0.0
Manufacture of other electronic and electric wires and cables	10.856	-5.6	0.1	6.2	-0.1	0.1	0.0	0.1	1.4	0.1	0.4	3.2	0.1	0.0
<b>MANUFACTURE OF FURNITURE</b>	<b>13.868</b>	<b>0.6</b>	<b>0.4</b>	<b>0.7</b>	<b>2.1</b>	<b>0.1</b>	<b>0.9</b>	<b>0.1</b>	<b>0.8</b>	<b>0.0</b>	<b>0.8</b>	<b>0.1</b>	<b>-0.3</b>	<b>-0.1</b>
Manufacture of Furniture	13.868	0.6	0.4	0.7	2.1	0.1	0.9	0.1	0.8	0.0	0.8	0.1	-0.3	-0.1

Industry Group	Weight	Sep-17	Oct-17	Nov-17	Dec-17	Jan-18	Feb-18	Mar-18	Apr-18	May-18	Jun-18	Jul-18	Aug-18	Sep-18
PPI-UTILITIES	78.600	1.6	0.6	0.0	-0.2	0.2	0.3	0.2	0.9	0.3	1.8	-3.4	2.4	0.4
Water collection, treatment and supply	18.284	0.0	0.0	0.0	0.0	0.0	0.0	0.0	0.0	0.0	0.0	2.3	0.0	0.0
Electricity power generation	60.316	2.0	0.8	0.1	-0.2	0.3	0.4	0.2	1.1	0.4	2.2	-4.5	2.9	0.4

**Table2a: Monthly Producer Price Index -Manufacturing (Local Market), Sept 2017 to Sept 2018**

Base period: July 2009 to June 2010=100

Industry Group	Weight	Sep-17	Oct-17	Nov-17	Dec-17	Jan-18	Feb-18	Mar-18	Apr-18	May-18	Jun-18	Jul-18	Aug-18	Sep-18
PPI-M LOCAL	738.598	174.89	172.84	172.23	170.94	169.55	169.72	170.06	170.82	171.12	173.09	173.92	174.62	175.09
MANUFACTURE OF FOOD PRODUCTS	257.790	193.99	191.28	189.50	185.24	181.73	179.61	179.32	180.16	180.80	183.23	184.94	186.25	187.22
MANUFACTURE OF BEVERAGES	71.418	152.85	152.83	153.11	152.99	153.96	154.03	153.77	153.80	153.80	154.02	153.08	154.34	154.71
MANUFACTURE OF TOBACCO PRODUCTS	10.587	130.64	131.10	131.11	130.93	131.13	131.10	131.37	131.81	132.16	133.49	132.56	132.19	133.03
MANUFACTURE OF TEXTILES	19.225	216.06	207.80	207.80	207.80	207.80	214.37	214.37	214.37	214.37	219.31	219.31	221.84	221.84
MANUFACTURE OF WEARING APPAREL	55.243	206.88	204.73	204.73	204.73	204.50	207.06	207.59	207.59	207.59	208.83	209.53	210.16	210.16
MANUFACTURE OF LEATHER & RELATED PRODUCTS	4.073	163.13	165.57	165.57	165.57	171.24	171.24	171.24	171.24	171.24	171.24	171.24	171.24	171.24
MANUFACTURE OF WOOD AND PRODUCTS OF WOOD, CORK, EXCEPT FURNITURE	7.316	163.01	163.31	162.19	159.06	155.11	153.57	153.97	155.90	156.12	158.25	157.66	157.57	157.77
MANUFACTURE OF PAPER & PAPER PRODUCTS	12.134	130.00	132.22	132.14	133.22	132.27	134.14	134.18	135.88	136.00	136.29	139.44	138.01	138.33
PRINTING AND REPRODUCTION OF RECORDED MEDIA	25.329	158.13	158.16	157.66	159.37	154.22	156.88	156.90	157.07	157.67	159.40	155.31	155.28	155.35
MANUFACTURE OF CHEMICALS & CHEMICAL PRODUCTS	64.540	162.71	159.45	159.45	160.11	157.73	158.49	161.13	163.49	163.49	163.06	162.91	163.95	163.95
MANUFACTURE OF PHARMACEUTICALS, MEDICINAL CHEMICAL & BOTANICAL PRODUCTS	20.817	166.71	167.15	167.18	171.78	174.13	183.50	183.74	183.63	183.94	197.90	204.64	204.87	204.96
MANUFACTURE OF RUBBER & PLASTIC PRODUCTS	22.947	148.01	146.30	146.30	144.52	144.52	145.25	145.36	148.16	148.16	149.63	152.30	152.30	151.57
MANUFACTURE OF OTHER NON-METALLIC MINERAL PRODUCTS	112.706	129.35	126.54	126.54	126.53	127.32	128.62	129.40	130.09	130.38	129.68	129.56	127.63	127.04
MANUFACTURE OF BASIC METALS	14.534	168.80	173.74	175.72	188.51	195.61	188.61	192.59	194.92	193.96	195.22	191.43	189.44	191.08
MANUFACTURE OF FABRICATED METAL PRODUCTS,EXCEPT MACHINERY AND EQUIPMENT	10.831	169.32	170.02	170.62	170.89	173.98	171.25	173.25	170.53	170.95	175.44	173.50	171.89	175.41
MANUFACTURE OF ELECTRICAL EQUIPMENT	15.239	150.42	150.53	156.25	156.20	156.26	161.61	161.69	163.03	163.12	163.49	166.62	169.36	169.36
MANUFACTURE OF FURNITURE	13.868	162.51	163.10	164.29	167.73	167.86	169.44	169.67	171.06	171.06	172.42	172.63	172.17	171.94
MANUFACTURE OF FOOD PRODUCTS	257.790	193.99	191.28	189.5	185.24	181.73	179.606	179.3237	180.16	180.80	183.23	184.94	186.25	187.22
Processing and Preserving of meat	8.219	230.18	230.18	230.18	230.18	247.05	247.05	247.25	248.48	248.48	248.48	248.26	248.26	248.26
Manufacture of Vegetable and Animal Oils and Fats	57.955	209.50	203.70	203.81	202.63	194.46	193.56	194.85	196.23	196.23	197.94	200.65	197.56	197.56
Manufacture of Dairy Products	5.625	161.96	161.96	161.96	161.96	161.96	161.96	161.96	161.96	161.96	162.89	162.89	162.89	162.89
Manufacture of Grain Milling products	82.113	180.26	177.92	177.01	168.36	165.44	159.18	158.92	158.24	159.08	164.98	162.54	162.90	165.43
Manufacture of Bakery products	25.197	167.58	167.58	167.80	168.23	170.12	171.92	171.92	171.92	171.92	172.11	172.11	172.27	172.27
Manufacture of Sugar	41.587	184.21	180.43	168.99	156.15	141.30	135.01	127.72	134.89	140.28	145.01	159.96	175.05	177.90

Industry Group	Weight	Sep-17	Oct-17	Nov-17	Dec-17	Jan-18	Feb-18	Mar-18	Apr-18	May-18	Jun-18	Jul-18	Aug-18	Sep-18
Coffee Processing	12.539	196.90	196.90	196.90	196.90	196.79	196.79	196.79	196.79	196.79	196.79	196.79	196.79	196.79
Tea Processing	11.654	155.78	155.75	155.86	153.65	152.09	156.61	156.23	156.54	155.29	154.61	154.47	154.93	152.57
Manufacture of Prepared Animal Feeds	12.901	260.73	260.73	260.73	260.73	260.73	260.73	260.73	260.73	260.73	260.73	260.73	260.73	260.73
<b>MANUFACTURE OF BEVERAGES</b>	<b>71.418</b>	<b>152.85</b>	<b>152.83</b>	<b>153.11</b>	<b>152.99</b>	<b>153.96</b>	<b>154.03</b>	<b>153.77</b>	<b>153.80</b>	<b>153.80</b>	<b>154.02</b>	<b>153.08</b>	<b>154.34</b>	<b>154.71</b>
Distilling, rectifying and blending of spirits	2.606	179.66	179.35	180.04	177.47	175.94	177.26	172.37	173.02	173.02	175.20	177.33	177.05	178.63
Manufacture of Malt Liquors and Malt	32.174	159.58	159.58	159.58	159.58	159.58	159.58	159.58	159.58	159.58	159.58	159.58	162.14	162.74
Manufacture of Soft Drinks, Production of Mineral waters and Other bottled waters	36.638	143.91	143.91	144.46	144.46	146.73	146.73	146.67	146.67	146.67	146.92	144.68	144.68	144.68
<b>MANUFACTURE OF TOBACCO PRODUCTS</b>	<b>10.587</b>	<b>130.64</b>	<b>131.10</b>	<b>131.11</b>	<b>130.93</b>	<b>131.13</b>	<b>131.10</b>	<b>131.37</b>	<b>131.81</b>	<b>132.16</b>	<b>133.49</b>	<b>132.56</b>	<b>132.19</b>	<b>133.03</b>
Manufacture of Tobacco Products	10.587	130.64	131.10	131.11	130.93	131.13	131.10	131.37	131.81	132.16	133.49	132.56	132.19	133.03
<b>MANUFACTURE OF TEXTILES</b>	<b>19.225</b>	<b>216.06</b>	<b>207.80</b>	<b>207.80</b>	<b>207.80</b>	<b>207.80</b>	<b>214.37</b>	<b>214.37</b>	<b>214.37</b>	<b>214.37</b>	<b>219.31</b>	<b>219.31</b>	<b>221.84</b>	<b>221.84</b>
Manufacture of made-up textile articles, except apparel	19.225	216.06	207.80	207.80	207.80	207.80	214.37	214.37	214.37	214.37	219.31	219.31	221.84	221.84
<b>MANUFACTURE OF WEARING APPAREL</b>	<b>55.243</b>	<b>206.88</b>	<b>204.73</b>	<b>204.73</b>	<b>204.73</b>	<b>204.50</b>	<b>207.06</b>	<b>207.59</b>	<b>207.59</b>	<b>207.59</b>	<b>208.83</b>	<b>209.53</b>	<b>210.16</b>	<b>210.16</b>
Manufacture of wearing apparel, except fur apparel	55.243	206.88	204.73	204.73	204.73	204.50	207.06	207.59	207.59	207.59	208.83	209.53	210.16	210.16
<b>MANUFACTURE OF LEATHER &amp; RELATED PRODUCTS</b>	<b>4.073</b>	<b>163.13</b>	<b>165.57</b>	<b>165.57</b>	<b>165.57</b>	<b>171.24</b>	<b>171.24</b>	<b>171.24</b>	<b>171.24</b>	<b>171.24</b>	<b>171.24</b>	<b>171.24</b>	<b>171.24</b>	<b>171.24</b>
Manufacture of footwear	4.073	163.13	165.57	165.57	165.57	171.24	171.24	171.24	171.24	171.24	171.24	171.24	171.24	171.24
<b>MANUFACTURE OF WOOD AND PRODUCTS OF WOOD, CORK, EXCEPT FURNITURE</b>	<b>7.316</b>	<b>163.01</b>	<b>163.31</b>	<b>162.19</b>	<b>159.06</b>	<b>155.11</b>	<b>153.57</b>	<b>153.97</b>	<b>155.90</b>	<b>156.12</b>	<b>158.25</b>	<b>157.66</b>	<b>157.57</b>	<b>157.77</b>
Manufacture of Builders' Carpentry & Joinery	7.316	163.01	163.31	162.19	159.06	155.11	153.57	153.97	155.90	156.12	158.25	157.66	157.57	157.77
<b>MANUFACTURE OF PAPER &amp; PAPER PRODUCTS</b>	<b>12.134</b>	<b>130.00</b>	<b>132.22</b>	<b>132.14</b>	<b>133.22</b>	<b>132.27</b>	<b>134.14</b>	<b>134.18</b>	<b>135.88</b>	<b>136.00</b>	<b>136.29</b>	<b>139.44</b>	<b>138.01</b>	<b>138.33</b>
Manufacture of pulp, paper and paperboard	5.344	125.92	125.95	125.75	127.93	127.25	130.83	130.85	131.33	131.51	130.96	137.97	136.53	137.40
Manufacture of corrugated paper and paperboard and of containers of paper and paperboard	2.931	139.39	147.64	147.64	147.64	144.84	146.20	146.20	146.20	146.20	145.50	147.14	146.13	146.13
Manufacture of other articles of paper and paperboard	3.860	127.77	127.23	127.23	127.89	128.39	128.38	128.50	133.51	133.66	135.90	135.16	133.34	133.16
<b>PRINTING AND REPRODUCTION OF RECORDED MEDIA</b>	<b>25.329</b>	<b>158.13</b>	<b>158.16</b>	<b>157.66</b>	<b>159.37</b>	<b>154.22</b>	<b>156.88</b>	<b>156.90</b>	<b>157.07</b>	<b>157.67</b>	<b>159.40</b>	<b>155.31</b>	<b>155.28</b>	<b>155.35</b>
Printing	25.329	158.13	158.16	157.66	159.37	154.22	156.88	156.90	157.07	157.67	159.40	155.31	155.28	155.35



Industry Group	Weight	Sep-17	Oct-17	Nov-17	Dec-17	Jan-18	Feb-18	Mar-18	Apr-18	May-18	Jun-18	Jul-18	Aug-18	Sep-18
<b>MANUFACTURE OF CHEMICALS &amp; CHEMICAL PRODUCTS</b>	<b>64.540</b>	<b>162.71</b>	<b>159.45</b>	<b>159.45</b>	<b>160.11</b>	<b>157.73</b>	<b>158.49</b>	<b>161.13</b>	<b>163.49</b>	<b>163.49</b>	<b>163.06</b>	<b>162.91</b>	<b>163.95</b>	<b>163.95</b>
Manufacture of paints, varnishes and similar coatings, printing ink and mastics	10.065	150.36	150.74	150.74	150.74	151.29	152.27	152.27	159.07	159.07	160.63	160.63	160.63	160.63
Manufacture of Soap, Detergents, cleaning and Polishing preparations	42.019	169.22	164.47	164.47	165.41	161.85	162.76	166.58	168.02	168.02	166.81	166.59	166.02	166.02
Manufacture of Other chemical Products n.e.c	12.456	147.69	147.83	147.83	147.83	147.83	147.83	147.83	150.16	150.16	151.18	151.18	159.37	159.37
<b>MANUFACTURE OF PHARMACEUTICALS, MEDICINAL CHEMICAL &amp; BOTANICAL PRODUCTS</b>	<b>20.817</b>	<b>166.71</b>	<b>167.15</b>	<b>167.18</b>	<b>171.78</b>	<b>174.13</b>	<b>183.50</b>	<b>183.74</b>	<b>183.63</b>	<b>183.94</b>	<b>197.90</b>	<b>204.64</b>	<b>204.87</b>	<b>204.96</b>
Manufacture of Pharmaceuticals, medicinal chemical and botanical products	20.817	166.71	167.15	167.18	171.78	174.13	183.50	183.74	183.63	183.94	197.90	204.64	204.87	204.96
<b>MANUFACTURE OF RUBBER &amp; PLASTIC PRODUCTS</b>	<b>22.947</b>	<b>148.01</b>	<b>146.30</b>	<b>146.30</b>	<b>144.52</b>	<b>144.52</b>	<b>145.25</b>	<b>145.36</b>	<b>148.16</b>	<b>148.16</b>	<b>149.63</b>	<b>152.30</b>	<b>152.30</b>	<b>151.57</b>
Manufacture of Plastic products	22.947	148.01	146.30	146.30	144.52	144.52	145.25	145.36	148.16	148.16	149.63	152.30	152.30	151.57
<b>MANUFACTURE OF OTHER NON-METALLIC MINERAL PRODUCTS</b>	<b>112.706</b>	<b>129.35</b>	<b>126.54</b>	<b>126.54</b>	<b>126.53</b>	<b>127.32</b>	<b>128.62</b>	<b>129.40</b>	<b>130.09</b>	<b>130.38</b>	<b>129.68</b>	<b>129.56</b>	<b>127.63</b>	<b>127.04</b>
Manufacture of Clay Building Materials	58.241	120.56	119.52	119.52	119.52	119.52	120.74	120.74	120.74	121.71	121.71	121.71	121.71	121.71
Manufacture of Cement, Lime and Plaster	35.277	139.34	133.82	133.82	133.82	135.57	137.15	138.69	140.29	140.29	138.23	135.89	130.12	128.30
Manufacture of Articles of Concrete, cement and plaster	19.188	134.22	132.29	132.29	132.22	133.16	134.11	135.35	135.93	135.16	135.35	139.06	139.06	139.06
<b>MANUFACTURE OF BASIC METALS</b>	<b>14.534</b>	<b>168.80</b>	<b>173.74</b>	<b>175.72</b>	<b>188.51</b>	<b>195.61</b>	<b>188.61</b>	<b>192.59</b>	<b>194.92</b>	<b>193.96</b>	<b>195.22</b>	<b>191.43</b>	<b>189.44</b>	<b>191.08</b>
Manufacture of basic iron and steel	14.534	168.80	173.74	175.72	188.51	195.61	188.61	192.59	194.92	193.96	195.22	191.43	189.44	191.08
<b>MANUFACTURE OF FABRICATED METAL PRODUCTS,EXCEPT MACHINERY AND EQUIPMENT</b>	<b>10.831</b>	<b>169.32</b>	<b>170.02</b>	<b>170.62</b>	<b>170.89</b>	<b>173.98</b>	<b>171.25</b>	<b>173.25</b>	<b>170.53</b>	<b>170.95</b>	<b>175.44</b>	<b>173.50</b>	<b>171.89</b>	<b>175.41</b>
Manufacture of Other Fabricated Metals n.e.c	10.831	169.32	170.02	170.62	170.89	173.98	171.25	173.25	170.53	170.95	175.44	173.50	171.89	175.41
<b>MANUFACTURE OF ELECTRICAL EQUIPMENT</b>	<b>15.239</b>	<b>150.42</b>	<b>150.53</b>	<b>156.25</b>	<b>156.20</b>	<b>156.26</b>	<b>161.61</b>	<b>161.69</b>	<b>163.03</b>	<b>163.12</b>	<b>163.49</b>	<b>166.62</b>	<b>169.36</b>	<b>169.36</b>
Manufacture of batteries and accumulators	4.384	168.99	168.99	168.99	168.99	168.99	184.16	184.16	184.16	184.16	184.16	184.16	191.43	191.43
Manufacture of other electronic and electric wires and cables	10.856	141.46	141.63	150.48	150.40	150.48	150.47	150.59	152.74	152.89	153.47	158.39	158.60	158.60
<b>MANUFACTURE OF FURNITURE</b>	<b>13.868</b>	<b>162.51</b>	<b>163.10</b>	<b>164.29</b>	<b>167.73</b>	<b>167.86</b>	<b>169.44</b>	<b>169.67</b>	<b>171.06</b>	<b>171.06</b>	<b>172.42</b>	<b>172.63</b>	<b>172.17</b>	<b>171.94</b>
Manufacture of Furniture	13.868	162.51	163.10	164.29	167.73	167.86	169.44	169.67	171.06	171.06	172.42	172.63	172.17	171.94

**Table2b: Annual Changes in Producer Price Index -Manufacturing (Local Market), Sept 2017 to Sept 2018**

Base period: July 2009 to June 2010=100

Industry Group	Weight	Sep-17	Oct-17	Nov-17	Dec-17	Jan-18	Feb-18	Mar-18	Apr-18	May-18	Jun-18	Jul-18	Aug-18	Sep-18
PPI-M LOCAL	738.598	7.4	6.4	4.7	3.0	1.7	1.2	0.2	-0.2	-0.8	1.3	0.2	0.0	0.1
MANUFACTURE OF FOOD PRODUCTS	257.790	13.1	12.3	8.6	4.9	1.3	-0.9	-1.7	-3.4	-4.9	-2.4	-3.8	-3.8	-3.5
MANUFACTURE OF BEVERAGES	71.418	1.6	1.6	1.8	1.3	1.2	1.2	-0.3	-0.3	-0.3	-0.4	0.4	1.1	1.2
MANUFACTURE OF TOBACCO PRODUCTS	10.587	5.0	4.9	3.9	3.4	3.5	3.6	3.7	3.9	4.2	5.5	1.5	1.1	1.8
MANUFACTURE OF TEXTILES	19.225	7.9	3.8	3.8	1.2	1.2	3.5	-6.0	-2.2	-2.2	0.0	1.5	2.7	2.7
MANUFACTURE OF WEARING APPAREL	55.243	0.8	-0.3	-0.4	-0.9	-0.3	1.3	-0.1	3.1	3.1	3.7	1.5	1.8	1.6
MANUFACTURE OF LEATHER & RELATED PRODUCTS	4.073	1.5	3.0	3.0	0.5	3.9	1.9	1.9	1.9	0.7	0.7	3.4	3.4	5.0
MANUFACTURE OF WOOD AND PRODUCTS OF WOOD, CORK, EXCEPT FURNITURE	7.316	3.2	2.7	1.2	-0.8	-2.7	-3.6	-3.4	-2.3	-3.7	-2.3	-3.3	-3.4	-3.2
MANUFACTURE OF PAPER & PAPER PRODUCTS	12.134	2.2	5.1	4.7	5.3	4.1	5.7	5.9	7.2	7.5	8.0	9.2	5.8	6.4
PRINTING AND REPRODUCTION OF RECORDED MEDIA	25.329	0.9	0.9	0.9	2.2	-1.3	0.4	-0.3	-0.2	-1.0	0.2	-2.0	-2.0	-1.8
MANUFACTURE OF CHEMICALS & CHEMICAL PRODUCTS	64.540	7.8	5.4	3.5	3.1	5.3	5.7	7.4	3.1	3.1	6.0	2.0	0.6	0.8
MANUFACTURE OF PHARMACEUTICALS, MEDICINAL CHEMICAL & BOTANICAL PRODUCTS	20.817	-1.6	-1.8	-2.4	0.3	1.4	6.9	7.6	5.9	5.7	18.6	22.9	22.7	22.9
MANUFACTURE OF RUBBER & PLASTIC PRODUCTS	22.947	0.5	0.5	0.1	-1.1	-2.1	-1.7	-1.7	0.2	0.2	1.2	3.1	3.1	2.4
MANUFACTURE OF OTHER NON-METALLIC MINERAL PRODUCTS	112.706	-1.8	-4.1	-4.1	-4.2	-3.8	-2.8	-2.2	-2.7	-0.5	-0.5	0.3	-1.2	-1.8
MANUFACTURE OF BASIC METALS	14.534	19.5	22.0	19.5	26.5	29.8	22.7	22.8	24.0	24.6	25.5	22.3	15.5	13.2
MANUFACTURE OF FABRICATED METAL PRODUCTS,EXCEPT MACHINERY AND EQUIPMENT	10.831	11.7	10.6	9.7	9.0	8.3	6.3	9.4	9.7	10.8	13.8	7.7	4.8	3.6
MANUFACTURE OF ELECTRICAL EQUIPMENT	15.239	2.4	2.3	6.0	3.6	0.3	3.8	3.8	4.6	4.6	4.9	6.9	8.7	12.6
MANUFACTURE OF FURNITURE	13.868	8.5	8.7	8.8	8.3	8.4	8.0	7.4	7.2	7.2	8.1	6.7	6.6	5.8
MANUFACTURE OF FOOD PRODUCTS	257.790	13.1	12.3	8.6	4.9	1.3	-0.9	-1.7	-3.4	-4.9	-2.4	-3.8	-3.8	-3.5
Processing and Preserving of meat	8.219	5.8	4.2	4.2	4.2	12.3	12.3	12.4	9.6	8.0	8.0	7.9	7.9	7.9
Manufacture of Vegetable and Animal Oils and Fats	57.955	12.7	13.6	10.9	7.6	1.6	1.0	1.0	-2.0	-4.2	-2.5	-4.1	-5.6	-5.7
Manufacture of Dairy Products	5.625	23.4	23.4	23.4	23.4	18.0	15.6	15.2	15.1	14.4	15.1	2.1	2.1	0.6
Manufacture of Grain Milling products	82.113	26.2	24.1	22.7	15.8	11.8	4.0	2.7	-0.1	-3.1	-0.9	-7.5	-9.5	-8.2
Manufacture of Bakery products	25.197	6.0	6.0	6.1	6.4	5.7	6.8	6.7	6.3	6.3	6.4	4.9	3.9	2.8
Manufacture of Sugar	41.587	24.7	17.2	8.5	-2.5	-14.1	-20.6	-26.0	-23.7	-23.9	-21.4	-13.2	-4.6	-3.4

Industry Group	Weight	Sep-17	Oct-17	Nov-17	Dec-17	Jan-18	Feb-18	Mar-18	Apr-18	May-18	Jun-18	Jul-18	Aug-18	Sep-18
Coffee Processing	12.539	4.5	4.5	4.4	4.1	4.0	4.0	3.1	2.3	2.3	2.3	-0.1	-0.1	-0.1
Tea Processing	11.654	8.8	8.8	8.6	6.1	5.4	8.5	8.1	5.2	4.4	3.6	3.1	0.4	-2.1
Manufacture of Prepared Animal Feeds	12.901	-2.7	-1.3	-9.0	-9.0	-10.2	-10.1	-10.1	-10.5	-9.8	-1.2	0.1	0.1	0.0
<b>MANUFACTURE OF BEVERAGES</b>	<b>71.418</b>	<b>1.6</b>	<b>1.6</b>	<b>1.8</b>	<b>1.3</b>	<b>1.2</b>	<b>1.2</b>	<b>-0.3</b>	<b>-0.3</b>	<b>-0.3</b>	<b>-0.4</b>	<b>0.4</b>	<b>1.1</b>	<b>1.2</b>
Distilling, rectifying and blending of spirits	2.606	14.1	14.5	14.6	12.7	9.5	8.3	5.4	5.0	5.0	1.6	1.6	-1.1	-0.6
Manufacture of Malt Liquors and Malt	32.174	0.0	0.0	0.0	0.0	0.0	0.0	0.0	0.0	0.0	0.0	0.0	1.6	2.0
Manufacture of Soft Drinks, Production of Mineral waters and Other bottled waters	36.638	2.3	2.3	2.6	1.7	1.8	1.8	-1.1	-1.1	-1.1	-1.0	0.7	0.7	0.5
<b>MANUFACTURE OF TOBACCO PRODUCTS</b>	<b>10.587</b>	<b>5.0</b>	<b>4.9</b>	<b>3.9</b>	<b>3.4</b>	<b>3.5</b>	<b>3.6</b>	<b>3.7</b>	<b>3.9</b>	<b>4.2</b>	<b>5.5</b>	<b>1.5</b>	<b>1.1</b>	<b>1.8</b>
Manufacture of Tobacco Products	10.587	5.0	4.9	3.9	3.4	3.5	3.6	3.7	3.9	4.2	5.5	1.5	1.1	1.8
<b>MANUFACTURE OF TEXTILES</b>	<b>19.225</b>	<b>7.9</b>	<b>3.8</b>	<b>3.8</b>	<b>1.2</b>	<b>1.2</b>	<b>3.5</b>	<b>-6.0</b>	<b>-2.2</b>	<b>-2.2</b>	<b>0.0</b>	<b>1.5</b>	<b>2.7</b>	<b>2.7</b>
Manufacture of made-up textile articles, except apparel	19.225	7.9	3.8	3.8	1.2	1.2	3.5	-6.0	-2.2	-2.2	0.0	1.5	2.7	2.7
<b>MANUFACTURE OF WEARING APPAREL</b>	<b>55.243</b>	<b>0.8</b>	<b>-0.3</b>	<b>-0.4</b>	<b>-0.9</b>	<b>-0.3</b>	<b>1.3</b>	<b>-0.1</b>	<b>3.1</b>	<b>3.1</b>	<b>3.7</b>	<b>1.5</b>	<b>1.8</b>	<b>1.6</b>
Manufacture of wearing apparel, except fur apparel	55.243	0.8	-0.3	-0.4	-0.9	-0.3	1.3	-0.1	3.1	3.1	3.7	1.5	1.8	1.6
<b>MANUFACTURE OF LEATHER &amp; RELATED PRODUCTS</b>	<b>4.073</b>	<b>1.5</b>	<b>3.0</b>	<b>3.0</b>	<b>0.5</b>	<b>3.9</b>	<b>1.9</b>	<b>1.9</b>	<b>1.9</b>	<b>0.7</b>	<b>0.7</b>	<b>3.4</b>	<b>3.4</b>	<b>5.0</b>
Manufacture of footwear	4.073	1.5	3.0	3.0	0.5	3.9	1.9	1.9	1.9	0.7	0.7	3.4	3.4	5.0
<b>MANUFACTURE OF WOOD AND PRODUCTS OF WOOD, CORK, EXCEPT FURNITURE</b>	<b>7.316</b>	<b>3.2</b>	<b>2.7</b>	<b>1.2</b>	<b>-0.8</b>	<b>-2.7</b>	<b>-3.6</b>	<b>-3.4</b>	<b>-2.3</b>	<b>-3.7</b>	<b>-2.3</b>	<b>-3.3</b>	<b>-3.4</b>	<b>-3.2</b>
Manufacture of Builders' Carpentry & Joinery	7.316	3.2	2.7	1.2	-0.8	-2.7	-3.6	-3.4	-2.3	-3.7	-2.3	-3.3	-3.4	-3.2
<b>MANUFACTURE OF PAPER &amp; PAPER PRODUCTS</b>	<b>12.134</b>	<b>2.2</b>	<b>5.1</b>	<b>4.7</b>	<b>5.3</b>	<b>4.1</b>	<b>5.7</b>	<b>5.9</b>	<b>7.2</b>	<b>7.5</b>	<b>8.0</b>	<b>9.2</b>	<b>5.8</b>	<b>6.4</b>
Manufacture of pulp, paper and paperboard	5.344	2.1	2.1	2.0	3.6	2.1	5.0	5.1	5.4	4.8	4.4	8.6	7.5	9.1
Manufacture of corrugated paper and paperboard and of containers of paper and paperboard	2.931	12.8	18.9	17.1	16.4	14.0	15.7	16.5	16.4	16.4	15.8	14.2	4.8	4.8
Manufacture of other articles of paper and paperboard	3.860	-5.2	-2.2	-2.3	-1.9	-1.6	-1.5	-1.5	2.3	3.9	6.6	5.8	4.4	4.2
<b>PRINTING AND REPRODUCTION OF RECORDED MEDIA</b>	<b>25.329</b>	<b>0.9</b>	<b>0.9</b>	<b>0.9</b>	<b>2.2</b>	<b>-1.3</b>	<b>0.4</b>	<b>-0.3</b>	<b>-0.2</b>	<b>-1.0</b>	<b>0.2</b>	<b>-2.0</b>	<b>-2.0</b>	<b>-1.8</b>
Printing	25.329	0.9	0.9	0.9	2.2	-1.3	0.4	-0.3	-0.2	-1.0	0.2	-2.0	-2.0	-1.8

Industry Group	Weight	Sep-17	Oct-17	Nov-17	Dec-17	Jan-18	Feb-18	Mar-18	Apr-18	May-18	Jun-18	Jul-18	Aug-18	Sep-18
<b>MANUFACTURE OF CHEMICALS &amp; CHEMICAL PRODUCTS</b>	<b>64.540</b>	<b>7.8</b>	<b>5.4</b>	<b>3.5</b>	<b>3.1</b>	<b>5.3</b>	<b>5.7</b>	<b>7.4</b>	<b>3.1</b>	<b>3.1</b>	<b>6.0</b>	<b>2.0</b>	<b>0.6</b>	<b>0.8</b>
Manufacture of paints, varnishes and similar coatings, printing ink and mastics	10.065	2.6	2.6	2.6	1.5	2.2	2.3	1.4	5.8	5.8	6.8	6.8	6.8	6.8
Manufacture of Soap, Detergents, cleaning and Polishing preparations	42.019	10.0	6.7	3.9	3.6	6.5	7.1	9.6	2.2	2.2	5.4	1.0	-2.0	-1.9
Manufacture of Other chemical Products n.e.c	12.456	2.1	2.2	2.2	2.2	3.3	3.4	3.3	4.9	4.9	8.4	2.5	7.9	7.9
<b>MANUFACTURE OF PHARMACEUTICALS, MEDICINAL CHEMICAL &amp; BOTANICAL PRODUCTS</b>	<b>20.817</b>	<b>-1.6</b>	<b>-1.8</b>	<b>-2.4</b>	<b>0.3</b>	<b>1.4</b>	<b>6.9</b>	<b>7.6</b>	<b>5.9</b>	<b>5.7</b>	<b>18.6</b>	<b>22.9</b>	<b>22.7</b>	<b>22.9</b>
Manufacture of Pharmaceuticals, medecinal chemical and botanical products	20.817	-1.6	-1.8	-2.4	0.3	1.4	6.9	7.6	5.9	5.7	18.6	22.9	22.7	22.9
<b>MANUFACTURE OF RUBBER &amp; PLASTIC PRODUCTS</b>	<b>22.947</b>	<b>0.5</b>	<b>0.5</b>	<b>0.1</b>	<b>-1.1</b>	<b>-2.1</b>	<b>-1.7</b>	<b>-1.7</b>	<b>0.2</b>	<b>0.2</b>	<b>1.2</b>	<b>3.1</b>	<b>3.1</b>	<b>2.4</b>
Manufacture of Plastic products	22.947	0.5	0.5	0.1	-1.1	-2.1	-1.7	-1.7	0.2	0.2	1.2	3.1	3.1	2.4
<b>MANUFACTURE OF OTHER NON-METALLIC MINERAL PRODUCTS</b>	<b>112.706</b>	<b>-1.8</b>	<b>-4.1</b>	<b>-4.1</b>	<b>-4.2</b>	<b>-3.8</b>	<b>-2.8</b>	<b>-2.2</b>	<b>-2.7</b>	<b>-0.5</b>	<b>-0.5</b>	<b>0.3</b>	<b>-1.2</b>	<b>-1.8</b>
Manufacture of Clay Building Materials	58.241	-0.9	-1.8	-1.8	-1.8	-2.1	-1.1	-1.1	-0.6	1.7	1.7	1.3	1.3	1.0
Manufacture of Cement, Lime and Plaster	35.277	-3.5	-7.4	-7.4	-7.4	-6.2	-5.1	-4.0	-2.9	0.5	0.8	-2.5	-6.6	-7.9
Manufacture of Articles of Concrete, cement and plaster	19.188	-0.2	-2.6	-2.6	-3.0	-2.5	-1.8	-0.9	-6.1	-6.7	-6.5	3.7	3.7	3.6
<b>MANUFACTURE OF BASIC METALS</b>	<b>14.534</b>	<b>19.5</b>	<b>22.0</b>	<b>19.5</b>	<b>26.5</b>	<b>29.8</b>	<b>22.7</b>	<b>22.8</b>	<b>24.0</b>	<b>24.6</b>	<b>25.5</b>	<b>22.3</b>	<b>15.5</b>	<b>13.2</b>
Manufacture of basic iron and steel	14.534	19.5	22.0	19.5	26.5	29.8	22.7	22.8	24.0	24.6	25.5	22.3	15.5	13.2
<b>MANUFACTURE OF FABRICATED METAL PRODUCTS,EXCEPT MACHINERY AND EQUIPMENT</b>	<b>10.831</b>	<b>11.7</b>	<b>10.6</b>	<b>9.7</b>	<b>9.0</b>	<b>8.3</b>	<b>6.3</b>	<b>9.4</b>	<b>9.7</b>	<b>10.8</b>	<b>13.8</b>	<b>7.7</b>	<b>4.8</b>	<b>3.6</b>
Manufacture of Other Fabricated Metals n.e.c	10.831	11.7	10.6	9.7	9.0	8.3	6.3	9.4	9.7	10.8	13.8	7.7	4.8	3.6
<b>MANUFACTURE OF ELECTRICAL EQUIPMENT</b>	<b>15.239</b>	<b>2.4</b>	<b>2.3</b>	<b>6.0</b>	<b>3.6</b>	<b>0.3</b>	<b>3.8</b>	<b>3.8</b>	<b>4.6</b>	<b>4.6</b>	<b>4.9</b>	<b>6.9</b>	<b>8.7</b>	<b>12.6</b>
Manufacture of batteries and accumulators	4.384	0.0	0.0	0.0	0.0	0.0	9.0	9.0	9.0	9.0	9.0	9.0	13.3	13.3
Manufacture of other electronic and electric wires and cables	10.856	4.1	4.0	10.1	5.8	0.4	0.6	0.6	1.9	1.9	2.4	5.7	5.8	12.1
<b>MANUFACTURE OF FURNITURE</b>	<b>13.868</b>	<b>8.5</b>	<b>8.7</b>	<b>8.8</b>	<b>8.3</b>	<b>8.4</b>	<b>8.0</b>	<b>7.4</b>	<b>7.2</b>	<b>7.2</b>	<b>8.1</b>	<b>6.7</b>	<b>6.6</b>	<b>5.8</b>
Manufacture of Furniture	13.868	8.5	8.7	8.8	8.3	8.4	8.0	7.4	7.2	7.2	8.1	6.7	6.6	5.8

**Table2c: Monthly Changes in Producer Price Index- Manufacturing (Local Market), Sept 2017 to Sept 2018**

Base period: July 2009 to June 2010=100

Industry Group	Weight	Sep-17	Oct-17	Nov-17	Dec-17	Jan-18	Feb-18	Mar-18	Apr-18	May-18	Jun-18	Jul-18	Aug-18	Sep-18
PPI-M LOCAL	738.598	0.2	-1.2	-0.4	-0.7	-0.8	0.1	0.2	0.4	0.2	1.1	0.5	0.4	0.3
MANUFACTURE OF FOOD PRODUCTS	257.790	0.2	-1.4	-0.9	-2.2	-1.9	-1.2	-0.2	0.5	0.4	1.3	0.9	0.7	0.5
MANUFACTURE OF BEVERAGES	71.418	0.1	0.0	0.2	-0.1	0.6	0.0	-0.2	0.0	0.0	0.1	-0.6	0.8	0.2
MANUFACTURE OF TOBACCO PRODUCTS	10.587	-0.1	0.4	0.0	-0.1	0.2	0.0	0.2	0.3	0.3	1.0	-0.7	-0.3	0.6
MANUFACTURE OF TEXTILES	19.225	0.0	-3.8	0.0	0.0	0.0	3.2	0.0	0.0	0.0	2.3	0.0	1.2	0.0
MANUFACTURE OF WEARING APPAREL	55.243	0.3	-1.0	0.0	0.0	-0.1	1.3	0.3	0.0	0.0	0.6	0.3	0.3	0.0
MANUFACTURE OF LEATHER & RELATED PRODUCTS	4.073	-1.5	1.5	0.0	0.0	3.4	0.0	0.0	0.0	0.0	0.0	0.0	0.0	0.0
MANUFACTURE OF WOOD AND PRODUCTS OF WOOD, CORK, EXCEPT FURNITURE	7.316	0.0	0.2	-0.7	-1.9	-2.5	-1.0	0.3	1.3	0.1	1.4	-0.4	-0.1	0.1
MANUFACTURE OF PAPER & PAPER PRODUCTS	12.134	-0.3	1.7	-0.1	0.8	-0.7	1.4	0.0	1.3	0.1	0.2	2.3	-1.0	0.2
PRINTING AND REPRODUCTION OF RECORDED MEDIA	25.329	-0.2	0.0	-0.3	1.1	-3.2	1.7	0.0	0.1	0.4	1.1	-2.6	0.0	0.0
MANUFACTURE OF CHEMICALS & CHEMICAL PRODUCTS	64.540	-0.1	-2.0	0.0	0.4	-1.5	0.5	1.7	1.5	0.0	-0.3	-0.1	0.6	0.0
MANUFACTURE OF PHARMACEUTICALS, MEDICINAL CHEMICAL & BOTANICAL PRODUCTS	20.817	-0.2	0.3	0.0	2.8	1.4	5.4	0.1	-0.1	0.2	7.6	3.4	0.1	0.0
MANUFACTURE OF RUBBER & PLASTIC PRODUCTS	22.947	0.2	-1.2	0.0	-1.2	0.0	0.5	0.1	1.9	0.0	1.0	1.8	0.0	-0.5
MANUFACTURE OF OTHER NON-METALLIC MINERAL PRODUCTS	112.706	0.1	-2.2	0.0	0.0	0.6	1.0	0.6	0.5	0.2	-0.5	-0.1	-1.5	-0.5
MANUFACTURE OF BASIC METALS	14.534	2.9	2.9	1.1	7.3	3.8	-3.6	2.1	1.2	-0.5	0.6	-1.9	-1.0	0.9
MANUFACTURE OF FABRICATED METAL PRODUCTS, EXCEPT MACHINERY AND EQUIPMENT	10.831	3.2	0.4	0.4	0.2	1.8	-1.6	1.2	-1.6	0.2	2.6	-1.1	-0.9	2.1
MANUFACTURE OF ELECTRICAL EQUIPMENT	15.239	-3.5	0.1	3.8	0.0	0.0	3.4	0.0	0.8	0.1	0.2	1.9	1.6	0.0
MANUFACTURE OF FURNITURE	13.868	0.6	0.4	0.7	2.1	0.1	0.9	0.1	0.8	0.0	0.8	0.1	-0.3	-0.1
MANUFACTURE OF FOOD PRODUCTS	257.790	0.2	-1.4	-0.9	-2.2	-1.9	-1.2	-0.2	0.5	0.4	1.3	0.9	0.7	0.5
Processing and Preserving of meat	8.219	0.0	0.0	0.0	0.0	7.3	0.0	0.1	0.5	0.0	0.0	-0.1	0.0	0.0
Manufacture of Vegetable and Animal Oils and Fats	57.955	0.1	-2.8	0.1	-0.6	-4.0	-0.5	0.7	0.7	0.0	0.9	1.4	-1.5	0.0
Manufacture of Dairy Products	5.625	1.5	0.0	0.0	0.0	0.0	0.0	0.0	0.0	0.0	0.6	0.0	0.0	0.0
Manufacture of Grain Milling products	82.113	0.2	-1.3	-0.5	-4.9	-1.7	-3.8	-0.2	-0.4	0.5	3.7	-1.5	0.2	1.6
Manufacture of Bakery products	25.197	1.1	0.0	0.1	0.3	1.1	1.1	0.0	0.0	0.0	0.1	0.0	0.1	0.0
Manufacture of Sugar	41.587	0.4	-2.1	-6.3	-7.6	-9.5	-4.5	-5.4	5.6	4.0	3.4	10.3	9.4	1.6

Industry Group	Weight	Sep-17	Oct-17	Nov-17	Dec-17	Jan-18	Feb-18	Mar-18	Apr-18	May-18	Jun-18	Jul-18	Aug-18	Sep-18
Coffee Processing	12.539	0.0	0.0	0.0	0.0	-0.1	0.0	0.0	0.0	0.0	0.0	0.0	0.0	0.0
Tea Processing	11.654	0.9	0.0	0.1	-1.4	-1.0	3.0	-0.2	0.2	-0.8	-0.4	-0.1	0.3	-1.5
Manufacture of Prepared Animal Feeds	12.901	0.1	0.0	0.0	0.0	0.0	0.0	0.0	0.0	0.0	0.0	0.0	0.0	0.0
<b>MANUFACTURE OF BEVERAGES</b>	<b>71.418</b>	<b>0.1</b>	<b>0.0</b>	<b>0.2</b>	<b>-0.1</b>	<b>0.6</b>	<b>0.0</b>	<b>-0.2</b>	<b>0.0</b>	<b>0.0</b>	<b>0.1</b>	<b>-0.6</b>	<b>0.8</b>	<b>0.2</b>
Distilling, rectifying and blending of spirits	2.606	0.4	-0.2	0.4	-1.4	-0.9	0.8	-2.8	0.4	0.0	1.3	1.2	-0.2	0.9
Manufacture of Malt Liquors and Malt	32.174	0.0	0.0	0.0	0.0	0.0	0.0	0.0	0.0	0.0	0.0	0.0	1.6	0.4
Manufacture of Soft Drinks, Production of Mineral waters and Other bottled waters	36.638	0.1	0.0	0.4	0.0	1.6	0.0	0.0	0.0	0.0	0.2	-1.5	0.0	0.0
<b>MANUFACTURE OF TOBACCO PRODUCTS</b>	<b>10.587</b>	<b>-0.1</b>	<b>0.4</b>	<b>0.0</b>	<b>-0.1</b>	<b>0.2</b>	<b>0.0</b>	<b>0.2</b>	<b>0.3</b>	<b>0.3</b>	<b>1.0</b>	<b>-0.7</b>	<b>-0.3</b>	<b>0.6</b>
Manufacture of Tobacco Products	10.587	-0.1	0.4	0.0	-0.1	0.2	0.0	0.2	0.3	0.3	1.0	-0.7	-0.3	0.6
<b>MANUFACTURE OF TEXTILES</b>	<b>19.225</b>	<b>0.0</b>	<b>-3.8</b>	<b>0.0</b>	<b>0.0</b>	<b>0.0</b>	<b>3.2</b>	<b>0.0</b>	<b>0.0</b>	<b>0.0</b>	<b>2.3</b>	<b>0.0</b>	<b>1.2</b>	<b>0.0</b>
Manufacture of made-up textile articles, except apparel	19.225	0.0	-3.8	0.0	0.0	0.0	3.2	0.0	0.0	0.0	2.3	0.0	1.2	0.0
<b>MANUFACTURE OF WEARING APPAREL</b>	<b>55.243</b>	<b>0.3</b>	<b>-1.0</b>	<b>0.0</b>	<b>0.0</b>	<b>-0.1</b>	<b>1.3</b>	<b>0.3</b>	<b>0.0</b>	<b>0.0</b>	<b>0.6</b>	<b>0.3</b>	<b>0.3</b>	<b>0.0</b>
Manufacture of wearing apparel, except fur apparel	55.243	0.3	-1.0	0.0	0.0	-0.1	1.3	0.3	0.0	0.0	0.6	0.3	0.3	0.0
<b>MANUFACTURE OF LEATHER &amp; RELATED PRODUCTS</b>	<b>4.073</b>	<b>-1.5</b>	<b>1.5</b>	<b>0.0</b>	<b>0.0</b>	<b>3.4</b>	<b>0.0</b>	<b>0.0</b>	<b>0.0</b>	<b>0.0</b>	<b>0.0</b>	<b>0.0</b>	<b>0.0</b>	<b>0.0</b>
Manufacture of footwear	4.073	-1.5	1.5	0.0	0.0	3.4	0.0	0.0	0.0	0.0	0.0	0.0	0.0	0.0
<b>MANUFACTURE OF WOOD AND PRODUCTS OF WOOD, CORK, EXCEPT FURNITURE</b>	<b>7.316</b>	<b>0.0</b>	<b>0.2</b>	<b>-0.7</b>	<b>-1.9</b>	<b>-2.5</b>	<b>-1.0</b>	<b>0.3</b>	<b>1.3</b>	<b>0.1</b>	<b>1.4</b>	<b>-0.4</b>	<b>-0.1</b>	<b>0.1</b>
Manufacture of Builders' Carpentry & Joinery	7.316	0.0	0.2	-0.7	-1.9	-2.5	-1.0	0.3	1.3	0.1	1.4	-0.4	-0.1	0.1
<b>MANUFACTURE OF PAPER &amp; PAPER PRODUCTS</b>	<b>12.134</b>	<b>-0.3</b>	<b>1.7</b>	<b>-0.1</b>	<b>0.8</b>	<b>-0.7</b>	<b>1.4</b>	<b>0.0</b>	<b>1.3</b>	<b>0.1</b>	<b>0.2</b>	<b>2.3</b>	<b>-1.0</b>	<b>0.2</b>
Manufacture of pulp, paper and paperboard	5.344	-0.9	0.0	-0.2	1.7	-0.5	2.8	0.0	0.4	0.1	-0.4	5.4	-1.0	0.6
Manufacture of corrugated paper and paperboard and of containers of paper and paperboard	2.931	0.0	5.9	0.0	0.0	-1.9	0.9	0.0	0.0	0.0	-0.5	1.1	-0.7	0.0
Manufacture of other articles of paper and paperboard	3.860	0.0	-0.4	0.0	0.5	0.4	0.0	0.1	3.9	0.1	1.7	-0.5	-1.3	-0.1
<b>PRINTING AND REPRODUCTION OF RECORDED MEDIA</b>	<b>25.329</b>	<b>-0.2</b>	<b>0.0</b>	<b>-0.3</b>	<b>1.1</b>	<b>-3.2</b>	<b>1.7</b>	<b>0.0</b>	<b>0.1</b>	<b>0.4</b>	<b>1.1</b>	<b>-2.6</b>	<b>0.0</b>	<b>0.0</b>
Printing	25.329	-0.2	0.0	-0.3	1.1	-3.2	1.7	0.0	0.1	0.4	1.1	-2.6	0.0	0.0

Industry Group	Weight	Sep-17	Oct-17	Nov-17	Dec-17	Jan-18	Feb-18	Mar-18	Apr-18	May-18	Jun-18	Jul-18	Aug-18	Sep-18
<b>MANUFACTURE OF CHEMICALS &amp; CHEMICAL PRODUCTS</b>	<b>64.540</b>	<b>-0.1</b>	<b>-2.0</b>	<b>0.0</b>	<b>0.4</b>	<b>-1.5</b>	<b>0.5</b>	<b>1.7</b>	<b>1.5</b>	<b>0.0</b>	<b>-0.3</b>	<b>-0.1</b>	<b>0.6</b>	<b>0.0</b>
Manufacture of paints, varnishes and similar coatings, printing ink and mastics	10.065	0.0	0.3	0.0	0.0	0.4	0.6	0.0	4.5	0.0	1.0	0.0	0.0	0.0
Manufacture of Soap, Detergents, cleaning and Polishing preparations	42.019	-0.2	-2.8	0.0	0.6	-2.2	0.6	2.3	0.9	0.0	-0.7	-0.1	-0.3	0.0
Manufacture of Other chemical Products n.e.c	12.456	0.0	0.1	0.0	0.0	0.0	0.0	0.0	1.6	0.0	0.7	0.0	5.4	0.0
<b>MANUFACTURE OF PHARMACEUTICALS, MEDICINAL CHEMICAL &amp; BOTANICAL PRODUCTS</b>	<b>20.817</b>	<b>-0.2</b>	<b>0.3</b>	<b>0.0</b>	<b>2.8</b>	<b>1.4</b>	<b>5.4</b>	<b>0.1</b>	<b>-0.1</b>	<b>0.2</b>	<b>7.6</b>	<b>3.4</b>	<b>0.1</b>	<b>0.0</b>
Manufacture of Pharmaceuticals, medicinal chemical and botanical products	20.817	-0.2	0.3	0.0	2.8	1.4	5.4	0.1	-0.1	0.2	7.6	3.4	0.1	0.0
<b>MANUFACTURE OF RUBBER &amp; PLASTIC PRODUCTS</b>	<b>22.947</b>	<b>0.2</b>	<b>-1.2</b>	<b>0.0</b>	<b>-1.2</b>	<b>0.0</b>	<b>0.5</b>	<b>0.1</b>	<b>1.9</b>	<b>0.0</b>	<b>1.0</b>	<b>1.8</b>	<b>0.0</b>	<b>-0.5</b>
Manufacture of Plastic products	22.947	0.2	-1.2	0.0	-1.2	0.0	0.5	0.1	1.9	0.0	1.0	1.8	0.0	-0.5
<b>MANUFACTURE OF OTHER NON-METALLIC MINERAL PRODUCTS</b>	<b>112.706</b>	<b>0.1</b>	<b>-2.2</b>	<b>0.0</b>	<b>0.0</b>	<b>0.6</b>	<b>1.0</b>	<b>0.6</b>	<b>0.5</b>	<b>0.2</b>	<b>-0.5</b>	<b>-0.1</b>	<b>-1.5</b>	<b>-0.5</b>
Manufacture of Clay Building Materials	58.241	0.3	-0.9	0.0	0.0	0.0	1.0	0.0	0.0	0.8	0.0	0.0	0.0	0.0
Manufacture of Cement, Lime and Plaster	35.277	0.0	-4.0	0.0	0.0	1.3	1.2	1.1	1.2	0.0	-1.5	-1.7	-4.2	-1.4
Manufacture of Articles of Concrete, cement and plaster	19.188	0.1	-1.4	0.0	-0.1	0.7	0.7	0.9	0.4	-0.6	0.1	2.7	0.0	0.0
<b>MANUFACTURE OF BASIC METALS</b>	<b>14.534</b>	<b>2.9</b>	<b>2.9</b>	<b>1.1</b>	<b>7.3</b>	<b>3.8</b>	<b>-3.6</b>	<b>2.1</b>	<b>1.2</b>	<b>-0.5</b>	<b>0.6</b>	<b>-1.9</b>	<b>-1.0</b>	<b>0.9</b>
Manufacture of basic iron and steel	14.534	2.9	2.9	1.1	7.3	3.8	-3.6	2.1	1.2	-0.5	0.6	-1.9	-1.0	0.9
<b>MANUFACTURE OF FABRICATED METAL PRODUCTS,EXCEPT MACHINERY AND EQUIPMENT</b>	<b>10.831</b>	<b>3.2</b>	<b>0.4</b>	<b>0.4</b>	<b>0.2</b>	<b>1.8</b>	<b>-1.6</b>	<b>1.2</b>	<b>-1.6</b>	<b>0.2</b>	<b>2.6</b>	<b>-1.1</b>	<b>-0.9</b>	<b>2.1</b>
Manufacture of Other Fabricated Metals n.e.c	10.831	3.2	0.4	0.4	0.2	1.8	-1.6	1.2	-1.6	0.2	2.6	-1.1	-0.9	2.1
<b>MANUFACTURE OF ELECTRICAL EQUIPMENT</b>	<b>15.239</b>	<b>-3.5</b>	<b>0.1</b>	<b>3.8</b>	<b>0.0</b>	<b>0.0</b>	<b>3.4</b>	<b>0.0</b>	<b>0.8</b>	<b>0.1</b>	<b>0.2</b>	<b>1.9</b>	<b>1.6</b>	<b>0.0</b>
Manufacture of batteries and accumulators	4.384	0.0	0.0	0.0	0.0	0.0	9.0	0.0	0.0	0.0	0.0	0.0	4.0	0.0
Manufacture of other electronic and electric wires and cables	10.856	-5.6	0.1	6.2	-0.1	0.1	0.0	0.1	1.4	0.1	0.4	3.2	0.1	0.0
<b>MANUFACTURE OF FURNITURE</b>	<b>13.868</b>	<b>0.6</b>	<b>0.4</b>	<b>0.7</b>	<b>2.1</b>	<b>0.1</b>	<b>0.9</b>	<b>0.1</b>	<b>0.8</b>	<b>0.0</b>	<b>0.8</b>	<b>0.1</b>	<b>-0.3</b>	<b>-0.1</b>
Manufacture of Furniture	13.868	0.6	0.4	0.7	2.1	0.1	0.9	0.1	0.8	0.0	0.8	0.1	-0.3	-0.1

**Table3a: Monthly Producer Price Index - Manufacturing (Export Market), Sept 2017 to Sept 2018**

Base period: July 2009 to June 2010=100

Industry Group	Weight	Sep-17	Oct-17	Nov-17	Dec-17	Jan-18	Feb-18	Mar-18	Apr-18	May-18	Jun-18	Jul-18	Aug-18	Sep-18
PPI-M EXPORT	182.802	225.65	230.8	226.71	225.15	225.1	223.34	228.27	223.69	219.84	222.11	218.65	206.82	210.95
MANUFACTURE OF FOOD PRODUCTS	107.169	240.26	247.03	240.66	236.71	240	238.385	243.28	235.96	229.90	234.82	232.00	216.51	221.91
MANUFACTURE OF BEVERAGES	6.090	302.74	305.94	306.02	304.71	262.56	262.3816	264.01	266.69	268.82	277.02	271.25	269.02	274.15
MANUFACTURE OF TOBACCO PRODUCTS	14.756	131.2	132.58	132.62	132.05	132.66	132.5703	133.39	134.75	135.82	139.97	137.05	135.92	138.52
MANUFACTURE OF LEATHER & RELATED PRODUCTS	11.844	203.32	205.23	207.84	224.21	216.69	206.6447	230.82	223.43	219.06	206.12	204.03	185.75	184.47
MANUFACTURE OF PAPER & PAPER PRODUCTS	3.724	271.51	275.17	275.14	280.95	282.55	281.56	283.14	286.90	288.29	305.00	288.13	286.78	286.63
MANUFACTURE OF CHEMICALS & CHEMICAL PRODUCTS	7.947	212.41	214.65	214.71	213.79	220.76	220.61	221.98	226.12	227.93	234.88	229.98	228.09	232.44
MANUFACTURE OF PHARMACEUTICALS, MEDICINAL CHEMICAL & BOTANICAL PRODUCTS	2.919	224.45	226.82	226.88	225.9	226.95	226.79	228.20	230.52	232.36	239.45	234.46	232.53	236.97
MANUFACTURE OF RUBBER & PLASTIC PRODUCTS	3.508	194.7	194.7	194.7	194.7	202.93	202.93	202.93	202.93	202.93	202.93	202.93	202.93	202.93
MANUFACTURE OF OTHER NON-METALLIC MINERAL PRODUCTS	24.844	156.31	157.96	158	157.32	158.05	157.94	158.92	160.53	161.82	113.57	111.21	110.29	107.04
MANUFACTURE OF FOOD PRODUCTS	107.169	240.26	247.03	240.66	236.71	240.00	238.39	243.28	235.96	229.90	234.82	232.00	216.51	221.91
Processing & Preserving of Fish, Crustaceans and Molluscs	19.899	316.24	334.03	317.82	303.53	312.59	315.35	338.07	307.22	287.02	287.01	260.00	201.95	226.23
Manufacture of Vegetable and Animal Oils and Fats	21.466	232.56	235.02	235.08	234.07	235.16	235.00	236.46	238.85	240.77	239.50	234.51	232.58	237.02
Manufacture of Sugar	15.058	241.97	244.53	244.59	243.54	244.67	232.76	234.21	236.58	240.52	275.70	301.39	298.91	304.61
Coffee Processing	33.812	204.19	204.36	200.13	207.35	207.79	203.36	187.62	198.75	196.43	192.19	193.08	183.90	176.69
Tea Processing	16.934	173.1	174.87	171.99	158.8	158.98	164.78	165.59	162.22	153.44	150.64	139.59	130.69	124.14
MANUFACTURE OF BEVERAGES	6.090	302.74	305.94	306.02	304.71	262.56	262.38	264.01	266.69	268.82	277.02	271.25	269.02	274.15
Manufacture of Soft Drinks, Production of Mineral waters and Other bottled waters	6.090	302.74	305.94	306.02	304.71	262.56	262.38	264.01	266.69	268.82	277.02	271.25	269.02	274.15
MANUFACTURE OF TOBACCO PRODUCTS	14.756	131.2	132.58	132.62	132.05	132.66	132.57	133.39	134.75	135.82	139.97	137.05	135.92	138.52
Manufacture of Tobacco Products	14.756	131.2	132.58	132.62	132.05	132.66	132.57	133.39	134.75	135.82	139.97	137.05	135.92	138.52
MANUFACTURE OF LEATHER & RELATED PRODUCTS	11.844	203.32	205.23	207.84	224.21	216.69	206.64	230.82	223.43	219.06	206.12	204.03	185.75	184.47
Tanning and dressing of leather; dressing and dyeing of fur	11.844	203.32	205.23	207.84	224.21	216.69	206.64	230.82	223.43	219.06	206.12	204.03	185.75	184.47



Industry Group	Weight	Sep-17	Oct-17	Nov-17	Dec-17	Jan-18	Feb-18	Mar-18	Apr-18	May-18	Jun-18	Jul-18	Aug-18	Sep-18
<b>MANUFACTURE OF PAPER &amp; PAPER PRODUCTS</b>	<b>3.724</b>	<b>271.51</b>	<b>275.17</b>	<b>275.14</b>	<b>280.95</b>	<b>282.55</b>	<b>281.56</b>	<b>283.14</b>	<b>286.90</b>	<b>288.29</b>	<b>305.00</b>	<b>288.13</b>	<b>286.78</b>	<b>286.63</b>
Manufacture of pulp, Paper & Paperboard	3.724	271.51	275.17	275.14	280.95	282.55	281.56	283.14	286.90	288.29	305.00	288.13	286.78	286.63
<b>MANUFACTURE OF CHEMICALS &amp; CHEMICAL PRODUCTS</b>	<b>7.947</b>	<b>212.41</b>	<b>214.65</b>	<b>214.71</b>	<b>213.79</b>	<b>220.76</b>	<b>220.61</b>	<b>221.98</b>	<b>226.12</b>	<b>227.93</b>	<b>234.88</b>	<b>229.98</b>	<b>228.09</b>	<b>232.44</b>
Manufacture of Soap, Detergents, cleaning and Polishing preparations	7.947	212.41	214.65	214.71	213.79	220.76	220.61	221.98	226.12	227.93	234.88	229.98	228.09	232.44
<b>MANUFACTURE OF PHARMACEUTICALS, MEDICINAL CHEMICAL &amp; BOTANICAL PRODUCTS</b>	<b>2.919</b>	<b>224.45</b>	<b>226.82</b>	<b>226.88</b>	<b>225.9</b>	<b>226.95</b>	<b>226.79</b>	<b>228.20</b>	<b>230.52</b>	<b>232.36</b>	<b>239.45</b>	<b>234.46</b>	<b>232.53</b>	<b>236.97</b>
Manufacture of Pharmaceuticals, medicinal chemical and botanical products	2.919	224.45	226.82	226.88	225.9	226.95	226.79	228.20	230.52	232.36	239.45	234.46	232.53	236.97
<b>MANUFACTURE OF RUBBER &amp; PLASTIC PRODUCTS</b>	<b>3.508</b>	<b>194.7</b>	<b>194.7</b>	<b>194.7</b>	<b>194.7</b>	<b>202.93</b>	<b>202.93</b>	<b>202.93</b>	<b>202.93</b>	<b>202.93</b>	<b>202.93</b>	<b>202.93</b>	<b>202.93</b>	<b>202.93</b>
Manufacture of Plastic products	3.508	194.7	194.7	194.7	194.7	202.93	202.93	202.93	202.93	202.93	202.93	202.93	202.93	202.93
<b>MANUFACTURE OF OTHER NON-METALLIC MINERAL PRODUCTS</b>	<b>24.844</b>	<b>156.31</b>	<b>157.96</b>	<b>158</b>	<b>157.32</b>	<b>158.05</b>	<b>157.94</b>	<b>158.92</b>	<b>160.53</b>	<b>161.82</b>	<b>113.57</b>	<b>111.21</b>	<b>110.29</b>	<b>107.04</b>
Manufacture of Cement, Lime and Plaster	24.844	156.31	157.96	158	157.32	158.05	157.94	158.92	160.53	161.82	113.57	111.21	110.29	107.04

**Table 3b: Annual Changes in Price Index -Manufacturing (Export Market), Sept 2017 to Sept 2018**

Base period: July 2009 to June 2010=100

Industry Group	Weight	Sep-17	Oct-17	Nov-17	Dec-17	Jan-18	Feb-18	Mar-18	Apr-18	May-18	Jun-18	Jul-18	Aug-18	Sep-18
PPI-M EXPORT	182.802	5.1	6.7	2.2	-0.7	-0.9	-2.0	-0.1	0.6	-1.9	0.3	-2.8	-9.1	-6.5
MANUFACTURE OF FOOD PRODUCTS	107.169	5.2	7.2	1.8	-2.4	-1.4	-2.9	-1.2	-0.4	-3.3	-0.4	-1.9	-10.6	-7.6
MANUFACTURE OF BEVERAGES	6.090	25.3	24.6	20.2	18.5	1.8	2.4	2.6	3.1	3.8	7.9	-10.4	-11.3	-9.4
MANUFACTURE OF TOBACCO PRODUCTS	14.756	0.2	-0.3	-3.8	-5.2	-5.0	-4.5	-4.2	-3.8	-3.2	0.7	4.4	3.4	5.6
MANUFACTURE OF LEATHER & RELATED PRODUCTS	11.844	-5.2	-2.0	-0.5	6.9	5.5	-2.7	8.9	6.7	-3.7	-3.3	-12.7	-13.7	-9.3
MANUFACTURE OF PAPER & PAPER PRODUCTS	3.724	4.9	5.9	3.3	4.0	4.2	5.5	5.4	6.2	6.6	13.8	6.9	6.1	5.6
MANUFACTURE OF CHEMICALS & CHEMICAL PRODUCTS	7.947	-6.8	-7.3	-10.6	-11.9	-9.3	-2.7	-3.5	-2.2	-1.5	2.0	8.2	7.2	9.4
MANUFACTURE OF PHARMACEUTICALS, MEDICINAL CHEMICAL & BOTANICAL PRODUCTS	2.919	6.5	5.9	2.2	0.7	0.8	1.5	1.7	2.2	2.8	6.9	4.4	3.4	5.6
MANUFACTURE OF RUBBER & PLASTIC PRODUCTS	3.508	2.0	2.0	2.0	2.0	4.3	4.3	4.3	4.2	4.2	4.2	4.2	4.2	4.2
MANUFACTURE OF OTHER NON-METALLIC MINERAL PRODUCTS	24.844	6.5	5.9	2.2	0.7	0.8	1.5	1.7	2.2	2.8	-27.2	-28.9	-29.6	-31.5
MANUFACTURE OF FOOD PRODUCTS	107.169	5.2	7.2	1.8	-2.4	-1.4	-2.9	-1.2	-0.4	-3.3	-0.4	-1.9	-10.6	-7.6
Processing & Preserving of Fish, Crustaceans and Molluscs	19.899	12.5	19.7	11.3	6.8	2.7	0.5	6.5	-0.6	-7.4	-7.4	-16.6	-37.0	-28.5
Manufacture of Vegetable and Animal Oils and Fats	21.466	-8.6	-5.6	-7.9	-10.6	-10.4	-10.0	-9.7	2.2	2.8	3.2	0.8	-0.2	1.9
Manufacture of Sugar	15.058	6.5	5.9	2.2	0.7	0.8	-3.4	-3.2	-2.7	-1.3	14.2	24.5	23.3	25.9
Coffee Processing	33.812	3.9	-2.5	-6.5	-10.3	-2.2	-3.8	-9.9	-2.6	-4.4	-3.6	-2.5	-11.6	-13.5
Tea Processing	16.934	39.1	44.9	33.0	24.6	20.8	21.3	22.0	13.2	2.3	-1.2	-11.5	-20.7	-28.3
MANUFACTURE OF BEVERAGES	6.090	25.3	24.6	20.2	18.5	1.8	2.4	2.6	3.1	3.8	7.9	-10.4	-11.3	-9.4
Manufacture of Soft Drinks, Production of Mineral waters and Other bottled waters	6.090	25.3	24.6	20.2	18.5	1.8	2.4	2.6	3.1	3.8	7.9	-10.4	-11.3	-9.4
MANUFACTURE OF TOBACCO PRODUCTS	14.756	0.2	-0.3	-3.8	-5.2	-5.0	-4.5	-4.2	-3.8	-3.2	0.7	4.4	3.4	5.6
Manufacture of Tobacco Products	14.756	0.2	-0.3	-3.8	-5.2	-5.0	-4.5	-4.2	-3.8	-3.2	0.7	4.4	3.4	5.6
MANUFACTURE OF LEATHER & RELATED PRODUCTS	11.844	-5.2	-2.0	-0.5	6.9	5.5	-2.7	8.9	6.7	-3.7	-3.3	-12.7	-13.7	-9.3
Tanning and dressing of leather; dressing and dyeing of fur	11.844	-5.2	-2.0	-0.5	6.9	5.5	-2.7	8.9	6.7	-3.7	-3.3	-12.7	-13.7	-9.3

Industry Group	Weight	Sep-17	Oct-17	Nov-17	Dec-17	Jan-18	Feb-18	Mar-18	Apr-18	May-18	Jun-18	Jul-18	Aug-18	Sep-18
<b>MANUFACTURE OF PAPER &amp; PAPER PRODUCTS</b>	<b>3.724</b>	<b>4.9</b>	<b>5.9</b>	<b>3.3</b>	<b>4.0</b>	<b>4.2</b>	<b>5.5</b>	<b>5.4</b>	<b>6.2</b>	<b>6.6</b>	<b>13.8</b>	<b>6.9</b>	<b>6.1</b>	<b>5.6</b>
Manufacture of pulp, Paper & Paperboard	3.724	4.9	5.9	3.3	4.0	4.2	5.5	5.4	6.2	6.6	13.8	6.9	6.1	5.6
<b>MANUFACTURE OF CHEMICALS &amp; CHEMICAL PRODUCTS</b>	<b>7.947</b>	<b>-6.8</b>	<b>-7.3</b>	<b>-10.6</b>	<b>-11.9</b>	<b>-9.3</b>	<b>-2.7</b>	<b>-3.5</b>	<b>-2.2</b>	<b>-1.5</b>	<b>2.0</b>	<b>8.2</b>	<b>7.2</b>	<b>9.4</b>
Manufacture of Soap, Detergents, cleaning and Polishing preparations	7.947	-6.8	-7.3	-10.6	-11.9	-9.3	-2.7	-3.5	-2.2	-1.5	2.0	8.2	7.2	9.4
<b>MANUFACTURE OF PHARMACEUTICALS, MEDICINAL CHEMICAL &amp; BOTANICAL PRODUCTS</b>	<b>2.919</b>	<b>6.5</b>	<b>5.9</b>	<b>2.2</b>	<b>0.7</b>	<b>0.8</b>	<b>1.5</b>	<b>1.7</b>	<b>2.2</b>	<b>2.8</b>	<b>6.9</b>	<b>4.4</b>	<b>3.4</b>	<b>5.6</b>
Manufacture of Pharmaceuticals, medicinal chemical and botanical products	2.919	6.5	5.9	2.2	0.7	0.8	1.5	1.7	2.2	2.8	6.9	4.4	3.4	5.6
<b>MANUFACTURE OF RUBBER &amp; PLASTIC PRODUCTS</b>	<b>3.508</b>	<b>2.0</b>	<b>2.0</b>	<b>2.0</b>	<b>2.0</b>	<b>4.3</b>	<b>4.3</b>	<b>4.3</b>	<b>4.2</b>	<b>4.2</b>	<b>4.2</b>	<b>4.2</b>	<b>4.2</b>	<b>4.2</b>
Manufacture of Plastic products	3.508	2.0	2.0	2.0	2.0	4.3	4.3	4.3	4.2	4.2	4.2	4.2	4.2	4.2
<b>MANUFACTURE OF OTHER NON-METALLIC MINERAL PRODUCTS</b>	<b>24.844</b>	<b>6.5</b>	<b>5.9</b>	<b>2.2</b>	<b>0.7</b>	<b>0.8</b>	<b>1.5</b>	<b>1.7</b>	<b>2.2</b>	<b>2.8</b>	<b>-27.2</b>	<b>-28.9</b>	<b>-29.6</b>	<b>-31.5</b>
Manufacture of Cement, Lime and Plaster	24.844	6.5	5.9	2.2	0.7	0.8	1.5	1.7	2.2	2.8	-27.2	-28.9	-29.6	-31.5

**Table3c: Monthly Changes in Producer Price Index - Manufacturing (Export Market), Sept 2017 to Sept 2018**

Base period: July 2009 to June 2010=100

Industry Group	Weight	Sep-17	Oct-17	Nov-17	Dec-17	Jan-18	Feb-18	Mar-18	Apr-18	May-18	Jun-18	Jul-18	Aug-18	Sep-18
<b>PPI-M EXPORT</b>	<b>182.802</b>	<b>-0.9</b>	<b>2.3</b>	<b>-1.8</b>	<b>-0.7</b>	<b>0.0</b>	<b>-0.8</b>	<b>2.2</b>	<b>-2.0</b>	<b>-1.7</b>	<b>1.0</b>	<b>-1.6</b>	<b>-5.4</b>	<b>2.0</b>
<b>MANUFACTURE OF FOOD PRODUCTS</b>	<b>107.169</b>	<b>-0.8</b>	<b>2.8</b>	<b>-2.6</b>	<b>-1.6</b>	<b>1.4</b>	<b>-0.7</b>	<b>2.1</b>	<b>-3.0</b>	<b>-2.6</b>	<b>2.1</b>	<b>-1.2</b>	<b>-6.7</b>	<b>2.5</b>
MANUFACTURE OF BEVERAGES	6.090	-0.2	1.1	0.0	-0.4	-13.8	-0.1	0.6	1.0	0.8	3.0	-2.1	-0.8	1.9
MANUFACTURE OF TOBACCO PRODUCTS	14.756	-0.2	1.1	0.0	-0.4	0.5	-0.1	0.6	1.0	0.8	3.0	-2.1	-0.8	1.9
MANUFACTURE OF LEATHER & RELATED PRODUCTS	11.844	-5.6	0.9	1.3	7.9	-3.4	-4.6	11.7	-3.2	-2.0	-5.9	-1.0	-9.0	-0.7
MANUFACTURE OF PAPER & PAPER PRODUCTS	3.724	0.4	1.3	0.0	2.1	0.6	-0.4	0.6	1.3	0.5	5.8	-5.5	-0.5	-0.1
MANUFACTURE OF CHEMICALS & CHEMICAL PRODUCTS	7.947	-0.2	1.1	0.0	-0.4	3.3	-0.1	0.6	1.9	0.8	3.0	-2.1	-0.8	1.9
MANUFACTURE OF PHARMACEUTICALS, MEDICINAL CHEMICAL & BOTANICAL PRODUCTS	2.919	-0.2	1.1	0.0	-0.4	0.5	-0.1	0.6	1.0	0.8	3.0	-2.1	-0.8	1.9
MANUFACTURE OF RUBBER & PLASTIC PRODUCTS	3.508	0.0	0.0	0.0	0.0	4.2	0.0	0.0	0.0	0.0	0.0	0.0	0.0	0.0
MANUFACTURE OF OTHER NON-METALLIC MINERAL PRODUCTS	24.844	-0.2	1.1	0.0	-0.4	0.5	-0.1	0.6	1.0	0.8	-29.8	-2.1	-0.8	-2.9
<b>MANUFACTURE OF FOOD PRODUCTS</b>	<b>107.169</b>	<b>-0.8</b>	<b>2.8</b>	<b>-2.6</b>	<b>-1.6</b>	<b>1.4</b>	<b>-0.7</b>	<b>2.1</b>	<b>-3.0</b>	<b>-2.6</b>	<b>2.1</b>	<b>-1.2</b>	<b>-6.7</b>	<b>2.5</b>
Processing & Preserving of Fish, Crustaceans and Molluscs	19.899	-1.4	5.6	-4.9	-4.5	3.0	0.9	7.2	-9.1	-6.6	0.0	-9.4	-22.3	12.0
Manufacture of Vegetable and Animal Oils and Fats	21.466	-0.2	1.1	0.0	-0.4	0.5	-0.1	0.6	1.0	0.8	-0.5	-2.1	-0.8	1.9
Manufacture of Sugar	15.058	-0.2	1.1	0.0	-0.4	0.5	-4.9	0.6	1.0	1.7	14.6	9.3	-0.8	1.9
Coffee Processing	33.812	-1.9	0.1	-2.1	3.6	0.2	-2.1	-7.7	5.9	-1.2	-2.2	0.5	-4.8	-3.9
Tea Processing	16.934	5.0	1.0	-1.6	-7.7	0.1	3.6	0.5	-2.0	-5.4	-1.8	-7.3	-6.4	-5.0
<b>MANUFACTURE OF BEVERAGES</b>	<b>6.090</b>	<b>-0.2</b>	<b>1.1</b>	<b>0.0</b>	<b>-0.4</b>	<b>-13.8</b>	<b>-0.1</b>	<b>0.6</b>	<b>1.0</b>	<b>0.8</b>	<b>3.0</b>	<b>-2.1</b>	<b>-0.8</b>	<b>1.9</b>
Manufacture of Soft Drinks, Production of Mineral waters and Other bottled waters	6.090	-0.2	1.1	0.0	-0.4	-13.8	-0.1	0.6	1.0	0.8	3.0	-2.1	-0.8	1.9
<b>MANUFACTURE OF TOBACCO PRODUCTS</b>	<b>14.756</b>	<b>-0.2</b>	<b>1.1</b>	<b>0.0</b>	<b>-0.4</b>	<b>0.5</b>	<b>-0.1</b>	<b>0.6</b>	<b>1.0</b>	<b>0.8</b>	<b>3.0</b>	<b>-2.1</b>	<b>-0.8</b>	<b>1.9</b>
Manufacture of Tobacco Products	14.756	-0.2	1.1	0.0	-0.4	0.5	-0.1	0.6	1.0	0.8	3.0	-2.1	-0.8	1.9
<b>MANUFACTURE OF LEATHER &amp; RELATED PRODUCTS</b>	<b>11.844</b>	<b>-5.6</b>	<b>0.9</b>	<b>1.3</b>	<b>7.9</b>	<b>-3.4</b>	<b>-4.6</b>	<b>11.7</b>	<b>-3.2</b>	<b>-2.0</b>	<b>-5.9</b>	<b>-1.0</b>	<b>-9.0</b>	<b>-0.7</b>
Tanning and dressing of leather; dressing and dyeing of fur	11.844	-5.6	0.9	1.3	7.9	-3.4	-4.6	11.7	-3.2	-2.0	-5.9	-1.0	-9.0	-0.7

Industry Group	Weight	Sep-17	Oct-17	Nov-17	Dec-17	Jan-18	Feb-18	Mar-18	Apr-18	May-18	Jun-18	Jul-18	Aug-18	Sep-18
<b>MANUFACTURE OF PAPER &amp; PAPER PRODUCTS</b>	<b>3.724</b>	<b>0.4</b>	<b>1.3</b>	<b>0.0</b>	<b>2.1</b>	<b>0.6</b>	<b>-0.4</b>	<b>0.6</b>	<b>1.3</b>	<b>0.5</b>	<b>5.8</b>	<b>-5.5</b>	<b>-0.5</b>	<b>-0.1</b>
Manufacture of pulp, Paper & Paperboard	3.724	0.4	1.3	0.0	2.1	0.6	-0.4	0.6	1.3	0.5	5.8	-5.5	-0.5	-0.1
<b>MANUFACTURE OF CHEMICALS &amp; CHEMICAL PRODUCTS</b>	<b>7.947</b>	<b>-0.2</b>	<b>1.1</b>	<b>0.0</b>	<b>-0.4</b>	<b>3.3</b>	<b>-0.1</b>	<b>0.6</b>	<b>1.9</b>	<b>0.8</b>	<b>3.0</b>	<b>-2.1</b>	<b>-0.8</b>	<b>1.9</b>
Manufacture of Soap, Detergents, cleaning and Polishing preparations	7.947	-0.2	1.1	0.0	-0.4	3.3	-0.1	0.6	1.9	0.8	3.0	-2.1	-0.8	1.9
<b>MANUFACTURE OF PHARMACEUTICALS, MEDICINAL CHEMICAL &amp; BOTANICAL PRODUCTS</b>	<b>2.919</b>	<b>-0.2</b>	<b>1.1</b>	<b>0.0</b>	<b>-0.4</b>	<b>0.5</b>	<b>-0.1</b>	<b>0.6</b>	<b>1.0</b>	<b>0.8</b>	<b>3.0</b>	<b>-2.1</b>	<b>-0.8</b>	<b>1.9</b>
Manufacture of Pharmaceuticals, medicinal chemical and botanical products	2.919	-0.2	1.1	0.0	-0.4	0.5	-0.1	0.6	1.0	0.8	3.0	-2.1	-0.8	1.9
<b>MANUFACTURE OF RUBBER &amp; PLASTIC PRODUCTS</b>	<b>3.508</b>	<b>0.0</b>	<b>0.0</b>	<b>0.0</b>	<b>0.0</b>	<b>4.2</b>	<b>0.0</b>	<b>0.0</b>	<b>0.0</b>	<b>0.0</b>	<b>0.0</b>	<b>0.0</b>	<b>0.0</b>	<b>0.0</b>
Manufacture of Plastic products	3.508	0.0	0.0	0.0	0.0	4.2	0.0	0.0	0.0	0.0	0.0	0.0	0.0	0.0
<b>MANUFACTURE OF OTHER NON-METALLIC MINERAL PRODUCTS</b>	<b>24.844</b>	<b>-0.2</b>	<b>1.1</b>	<b>0.0</b>	<b>-0.4</b>	<b>0.5</b>	<b>-0.1</b>	<b>0.6</b>	<b>1.0</b>	<b>0.8</b>	<b>-29.8</b>	<b>-2.1</b>	<b>-0.8</b>	<b>-2.9</b>
Manufacture of Cement, Lime and Plaster	24.844	-0.2	1.1	0.0	-0.4	0.5	-0.1	0.6	1.0	0.8	-29.8	-2.1	-0.8	-2.9