



UGANDA BUREAU OF STATISTICS



MONTHLY MERCHANDISE TRADE STATISTICS BULLETIN

OCTOBER 2022

Release

Foreword

This Bulletin provides figures on the trade flows between Uganda and the rest of the world for the month of August 2022.

Merchandise Trade Statistics is critical for monitoring the performance of the economy and the developments in the external sector in general. This publication will be useful to investors, international traders; policy and decision makers in informing their decisions.

It is important to note that, for comparison purposes, the statistics contained herein exclude informal cross border trade data.

Your feedback on improving this monthly issue will be highly appreciated.



Aliziki K. Lubega
Director Economic Statistics

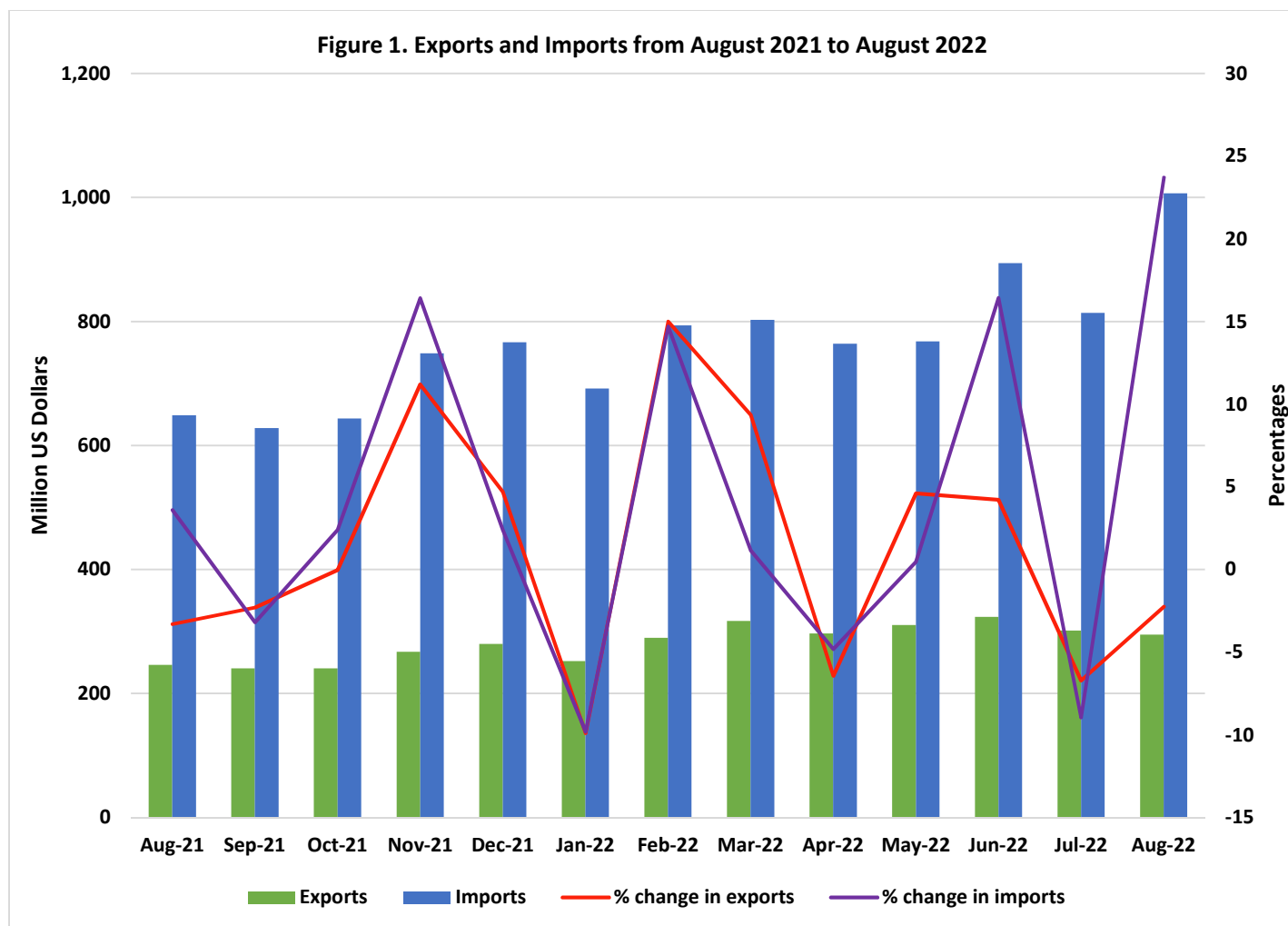
Introduction

This bulletin presents International Merchandise trade statistics (exports and imports flows) between Uganda and the rest of the world as compiled from custom and non-custom data sources. International merchandise trade statistics records all goods which add to, or subtract from, the stock of material resources of a country by entering (as imports) or leaving (as exports) its economic territory. The data compiled from customs and commodities authorities is herein referred to as formal exports and imports.

The compilation of international merchandise trade Statistics is based on the General Trade System and coded according to Harmonized Commodity Description and Coding System 2017 (HS2017) and the Standard International Trade Classification (SITC Rev4) commodity nomenclatures as prescribed in the International Merchandise Trade Statistics manual 2010 (IMTS2010).

In August 2022, total external trade increased by 16.7 percent to US\$ 1,301.8 million from US\$ 1,115.7 million recorded in July 2022. Total exports decreased by 2.2 percent to US\$ 294.9 million in August 2022 from US\$ 301.7 million recorded in July 2022. Total import flows increased by 23.7 percent to US\$ 1,006.9 million in August 2022 from US\$ 814.0 million registered in July 2022.

Annually, trade flows in August 2022 increased by 45.5 percent to US\$ 1,301.8 million from US\$ 894.9 million recorded in August 2021. Imports increased by 55.2 percent to US\$ 1,006.9 million in August 2022 compared to US\$ 648.8 million recorded in August 2021. Similarly, Exports increased by 19.9 percent to US\$ 294.9 million in August 2022 in comparison to US\$ 246.0 million registered in August 2021. See figure 1 and table 1 below.



The trade deficit increased to US\$712.0 million in August 2022 compared to a deficit of

US\$512.3 million recorded in July 2022. See Table 1 below.

Table 1: Merchandise Trade Statistics flows in Million US\$ from August 2021 to August 2022

Trade Flow	Aug-21	Sep-21	Oct-21	Nov-21	Dec-21	Jan-22	Feb-22	Mar-22	Apr-22	May-22	Jun-22	Jul-22	Aug-22
Exports	246.0	240.5	240.4	267.3	279.8	252.2	290.0	317.1	296.7	310.3	323.4	301.7	294.9
Imports	648.8	628.2	643.4	748.6	766.7	691.8	793.6	802.8	764.2	767.7	893.9	814.0	1,006.9
Total Trade	894.9	868.7	883.8	1,015.8	1,046.5	944.0	1,083.6	1,119.9	1,060.9	1,078.1	1,217.3	1,115.7	1,301.8
Trade Balance	-402.8	-387.7	-403.0	-481.3	-486.8	-439.6	-503.7	-485.7	-467.5	-457.4	-570.5	-512.3	-712.0
% change in exports	-3.3	-2.3	0.0	11.2	4.7	-9.9	15.0	9.4	-6.4	4.6	4.2	-6.7	-2.2
% change in imports	3.6	-3.2	2.4	16.4	2.4	-9.8	14.7	1.2	-4.8	0.5	16.4	-8.9	23.7
% change in Total Trade	1.6	-2.9	1.7	14.9	3.0	-9.8	14.8	3.3	-5.3	1.6	12.9	-8.4	16.7

Source: Uganda Bureau of Statistics

Performance of Formal Commodity Exports

Coffee was the most exported commodity whose revenues decreased to US\$ 71.2 million, accounting for 24.1 percent of total exports in August 2022 in comparison to US\$ 83.5 million generated in July 2022.

Sugar and sugar confectionary was the second most exported commodity accounting for

6.9 percent of total exports in August 2022.

Iron and steel, animal/veg fats and oils, maize, fish and fish products, petroleum products, sorghum and cement were also among Uganda's leading exported commodities. See Table 2 below.

Table 2: Leading export commodities by value in million US\$ from August 2021 to August 2022

Commodity	Aug-21	Sep-21	Oct-21	Nov-21	Dec-21	Jan-22	Feb-22	Mar-22	Apr-22	May-22	Jun-22	Jul-22	Aug-22
Coffee	75.1	66.6	61.4	71.1	75.3	62.0	72.2	81.0	70.8	73.0	83.8	83.5	71.2
Sugar and Sugar Confectionary	5.3	5.3	6.7	7.6	5.4	7.6	13.1	14.4	19.0	18.9	19.6	12.3	20.3
Iron and Steel	8.3	8.1	8.6	8.6	12.3	10.3	7.5	13.6	10.4	10.5	10.2	9.3	12.3
Animal/Veg Fats & Oils	9.1	9.5	8.5	10.4	10.0	8.9	8.9	13.6	11.8	8.3	11.4	8.5	11.5
Maize	2.8	3.3	1.9	1.6	3.2	6.9	7.0	5.8	4.7	5.8	4.5	7.2	11.0
Fish and Fish Products	9.1	8.3	11.5	14.4	12.5	10.8	13.4	11.5	10.8	12.5	13.2	12.2	10.9
Petroleum Products	8.0	8.2	8.6	7.6	8.8	7.1	6.3	7.9	8.2	8.4	11.0	10.1	10.3
Sorghum	0.1	0.3	0.1	0.4	0.3	0.8	4.4	2.5	1.7	1.6	0.8	5.4	7.8
Cement	6.4	6.7	7.6	7.6	8.7	7.8	8.1	9.3	6.9	7.6	6.3	6.1	7.8
Beans and Other Legumes	7.6	9.1	7.9	13.4	12.6	14.5	10.8	8.1	3.4	3.2	12.2	6.7	5.2
Vanilla	1.8	0.3	1.4	1.2	1.4	1.7	0.8	0.2	0.9	1.1	0.4	1.5	5.2
Tea	4.3	5.9	8.3	7.5	8.0	5.6	8.7	5.8	6.3	10.1	8.4	6.8	5.1
Plastic Products	4.5	5.2	7.8	5.4	5.3	4.1	5.4	6.7	6.3	7.1	5.3	5.4	4.8
Flowers	7.0	5.5	4.6	4.7	4.7	5.6	6.0	5.2	5.0	6.4	5.6	5.6	4.7
Cocoa Beans	7.7	4.7	6.2	7.7	9.2	7.5	12.1	9.1	10.0	6.0	9.5	3.8	3.7
Tobacco	3.2	6.8	5.1	3.4	4.7	3.2	3.7	5.1	3.0	4.9	4.5	3.4	3.6
Live Animals	2.4	2.3	1.8	1.8	2.0	1.0	1.1	1.4	2.5	2.8	3.0	2.1	2.7
Vegetables	1.8	1.8	2.0	2.1	3.0	1.9	1.4	1.8	2.7	2.3	2.4	1.7	2.6
Electric Current	3.4	3.4	3.5	3.5	3.6	3.8	4.1	3.9	3.4	3.0	3.1	2.8	2.5
Mineral Water	2.2	1.9	3.3	3.1	3.0	1.6	2.3	3.7	3.5	2.6	2.6	3.0	2.4
Soap	1.1	1.6	1.5	1.4	2.7	1.3	2.4	3.6	4.4	3.4	3.5	1.6	2.2
Rice	0.2	0.2	0.5	0.5	0.4	0.2	0.1	0.2	0.2	0.2	0.1	0.1	2.0
Beer	2.7	2.8	2.6	2.3	2.5	2.3	2.9	2.4	1.9	1.8	2.5	2.9	1.9
Sesame Seeds	1.6	1.7	0.4	1.7	5.5	4.2	5.1	5.1	2.7	3.4	1.2	1.4	1.4
Fruits	0.6	1.8	0.7	1.0	0.8	0.9	1.2	0.5	0.5	1.1	1.3	0.7	1.0
Soya Beans	2.0	0.4	0.3	0.2	0.6	1.4	1.1	0.2	0.4	0.9	0.4	0.1	1.0
Hides and Skins	1.0	1.3	0.9	1.3	0.9	0.8	1.3	1.3	1.0	1.0	0.6	1.3	0.8
Bananas	0.4	0.4	0.3	0.3	0.2	0.2	0.4	0.6	0.4	0.4	0.2	0.2	0.3
Hoes and Hand Tools	0.0	0.0	0.0	0.2	0.1	0.0	0.1	0.0	0.1	0.0	0.1	0.1	0.2
Other commodities	66.2	67.1	66.2	75.2	72.0	68.4	78.0	92.6	93.7	102.0	95.8	95.8	78.3
Grand Total	246.0	240.5	240.4	267.3	279.8	252.2	290.0	317.1	296.7	310.3	323.4	301.7	294.9

Source: Uganda Bureau of Statistics

Formal Exports by Region and Country of Destination.

East African Community (EAC) was the major leading destination of Uganda's formal exports throughout the period under review followed by European Union, Other Africa, Asia, Other Europe, Middle East and North America.

In August 2022, formal exports to the EAC increased by 7.4 percent to US\$ 133.7 million,

accounting for 45.3 percent of total formal exports compared to US\$ 124.5 million registered in July 2022. The leading country of destination was South Sudan with revenues worth US\$ 67.4 million representing 22.9 percent of total export earnings.

European Union was the second highest export destination whose earnings decreased

to US\$ 62.0 million in August 2022 from US\$ 64.5 million recorded in July 2022. Italy, Germany, Netherlands and Belgium were the major countries of destination in the region, with a combined market share of 16.8 percent in July and August 2022 respectively

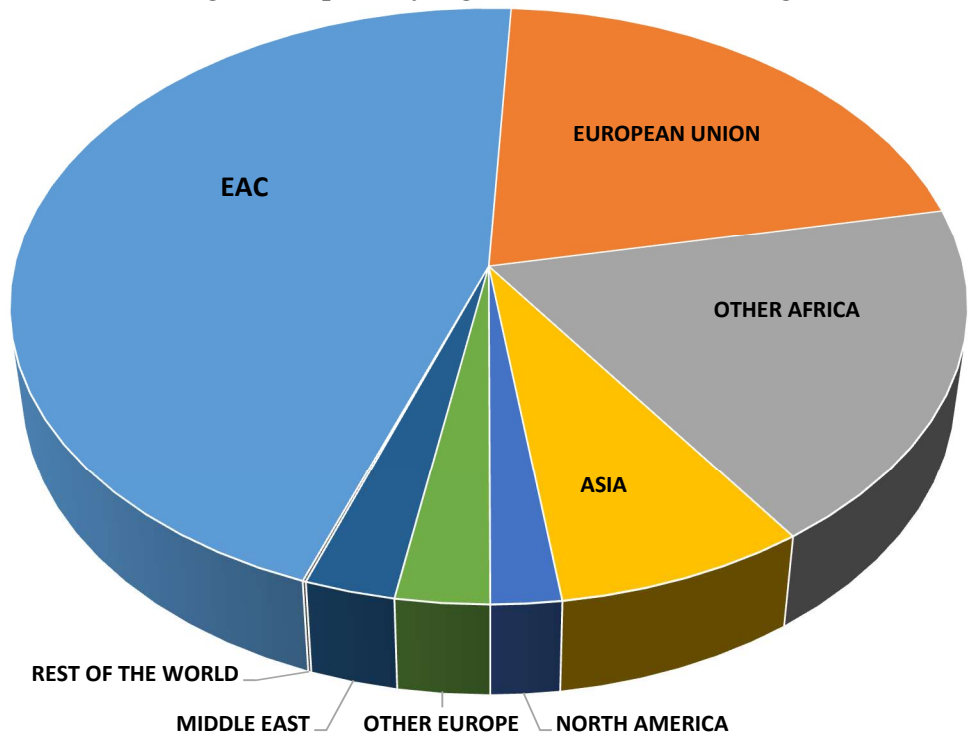
The market share for Other Africa decreased to 18.5 percent with earnings of US\$ 54.5 million in August 2022 from US\$ 65.9 million (a market share 21.8 percent) recorded in July 2022.

Export earnings from Asia increased by 5.7 percent to US\$ 22.2 million in August 2022 from

US\$ 21.0 million receipted in July 2022. Exports to India, Uganda’s leading country of destination in Asia for the period under review increased to US\$ 8.1 million in August 2022 from US\$ 5.5 million registered in July 2022. China, Hong Kong, Russian Federation and Indonesia were also among the leading countries of destination in the region.

Exports destined to North America decreased by 12.8 percent to US\$ 6.1 million in August 2022 from US\$ 7.0 million recorded in July 2022. In ~~particular~~particular, these were destined to United States. See Figure 2 below annex Table 6.

Figure2: Exports by region for the month of August 2022

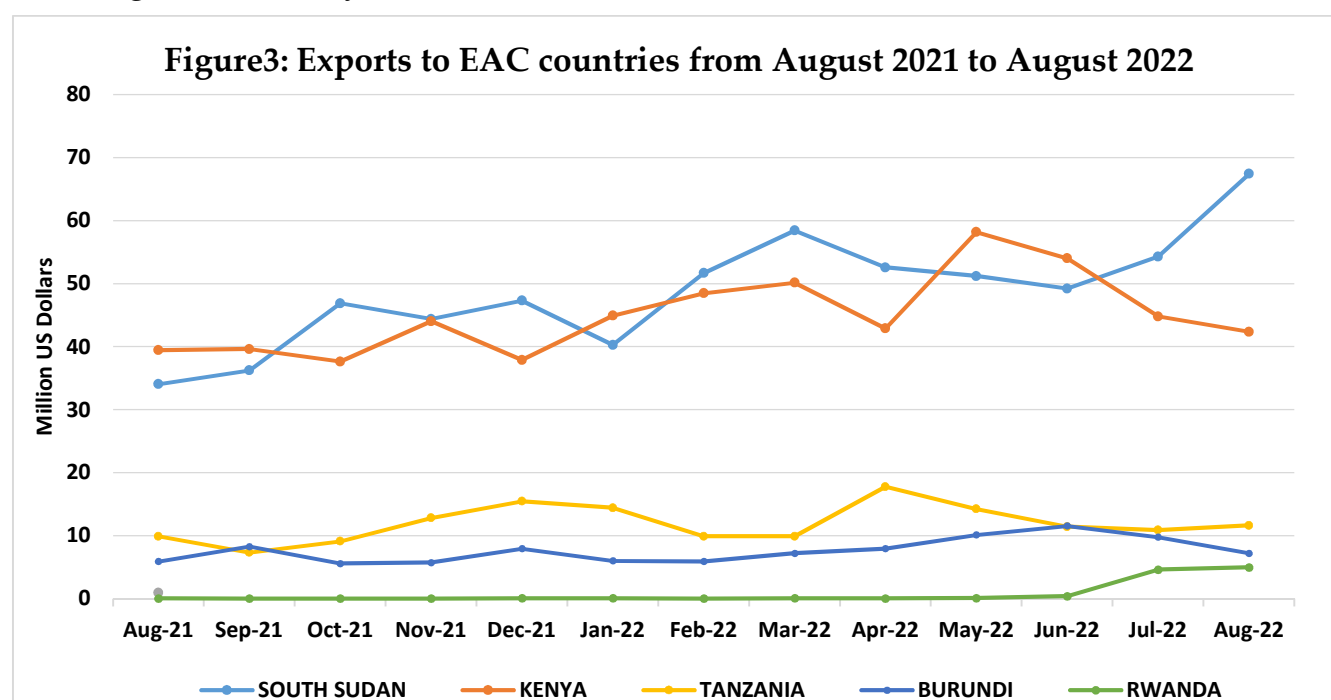


Formal Exports to EAC Countries

South Sudan was the leading destination of Uganda's exports among the East African Community (EAC) member states in August 2022 accounting for 22.9 percent of total exports. Revenues generated were worth US\$ 67.4 million. This was a 24.2 percent increase in the export earnings from South Sudan up from a 10.3 percent increase generated in July 2022.

Kenya was the second highest exports destination country accounting for 14.4 percent of Uganda's exports in August 2022, which was a slight decrease in the share from 14.9 percent recorded in July 2022.

Trade between Uganda and Rwanda slightly increased in July and August 2022. See figure 3 below and annex table 6.



Performance of Formal Commodity Imports

Petroleum, petroleum products and related materials were the most imported products accounting for 23.1 percent of total imports in August 2022. The import bill for petroleum products increased by 4.6 percent to US\$ 232.6 million in August 2022 from US\$ 222.3 million recorded in July 2022.

Iron and steel were the second most imported product with import bill worth US\$ 73.2 million in August 2022 from US\$ 49.2 million registered in July 2022.

Importation of road vehicles (including air-cushion vehicles) increased by 5.8 percent to US\$ ~~58.5~~ 58.5 million in August 2022 from US\$ 55.3 million recorded in July 2022 thus accounting for 5.8 percent of total imports.

Plastics in primary forms, machinery specialized for particular industries and cereals and cereal preparations were also among the leading imported products. See Table 3 below.

Table 3: Imports by Leading Products in Million US\$ from August 2021 to August 2022

SITC2 Description	Aug-21	Sep-21	Oct-21	Nov-21	Dec-21	Jan-22	Feb-22	Mar-22	Apr-22	May-22	Jun-22	Jul-22	Aug-22
Petroleum, petroleum products and related materials	104.8	104.7	114.5	130.9	136.4	133.7	127.3	157.2	149.4	144.1	202.3	222.3	232.6
Iron and steel	54.6	44.0	45.7	46.2	36.8	33.5	52.5	59.3	52.9	42.5	50.7	49.2	73.2
Road vehicles (including air-cushion vehicles)	51.6	53.0	55.1	57.5	49.6	45.7	51.9	51.2	51.5	56.4	57.7	55.3	58.5
Plastics in primary forms	26.6	28.3	29.1	45.6	43.2	48.7	44.3	45.8	32.7	38.4	45.9	33.5	40.2
Machinery specialized for particular industries	20.4	18.6	32.5	30.3	39.3	24.8	26.7	26.9	29.4	24.0	24.6	31.2	31.0
Cereals and cereal preparations	34.5	37.9	28.0	34.9	29.3	44.8	43.2	40.7	32.9	43.6	38.2	40.6	28.8
Medicinal and pharmaceutical products	40.8	39.3	31.9	66.3	56.8	33.8	95.7	44.8	95.3	42.9	58.1	33.8	26.5
Fixed vegetable fats and oils, crude, refined or fractionated	18.5	30.9	32.3	32.1	37.0	33.6	25.5	37.2	24.0	52.8	23.0	39.8	25.6
Chemical materials and products, n.e.s.	20.3	11.8	22.4	16.4	24.6	26.8	16.5	20.3	15.3	27.0	24.7	23.4	23.7
Paper, paperboard and articles of paper pulp, of paper or of paperboard	13.8	12.8	11.8	13.9	13.8	14.4	13.9	18.2	17.5	18.6	23.4	19.4	19.0
General industrial machinery and equipment, n.e.s., and machine parts, n.e.s.	18.0	17.6	12.0	14.2	16.2	14.6	15.0	18.6	12.6	15.3	20.1	15.2	18.0
Electrical machinery, apparatus and appliances, nes	17.9	22.4	23.3	17.0	20.3	17.9	27.9	22.9	17.3	17.2	18.6	15.6	17.4
Non-metallic mineral manufactures, n.e.s.	21.2	24.8	21.8	19.2	20.7	21.4	16.9	26.0	31.9	32.2	31.8	24.5	16.1
Essential oils, perfume materials; toilet cleaning preparations	12.1	6.7	8.8	12.5	10.4	14.0	17.5	13.6	14.2	11.4	13.7	12.1	15.2
Telecommunications and sound recording/reproducing apparatus, etc	11.8	10.4	10.0	19.2	18.4	16.5	14.6	16.9	18.0	12.2	30.3	15.4	14.4
Miscellaneous manufactured articles, n.e.s.	9.8	10.8	11.0	12.2	14.0	11.9	15.4	12.8	10.2	11.4	13.6	10.7	14.3
Organic chemicals	9.1	7.8	13.3	10.2	8.7	12.1	19.1	14.9	14.4	16.7	12.5	8.8	14.0
Textile yarn, fabrics, made-up articles, n.e.s., and related products	9.2	9.0	6.7	10.5	12.3	7.9	11.4	10.3	9.3	10.4	11.6	8.4	12.8
Feeding stuff for animals (not including unmilled cereals)	13.0	10.2	9.4	10.5	10.4	5.3	6.2	9.1	6.0	9.4	10.6	11.4	11.1
Manufactures of metals, n.e.s.	12.1	11.1	10.7	13.5	16.6	10.3	14.1	13.7	12.2	8.7	12.5	9.4	10.5
Fertilizers (other than those of group 272)	3.8	3.9	2.1	2.2	5.4	2.5	3.3	3.7	4.4	2.2	2.5	3.9	10.2
Textile fibres (other than wool tops), wastes; not manufactured	8.2	7.8	9.9	9.9	12.6	10.1	13.8	11.3	7.9	9.9	9.1	9.5	9.8
Professional, scientific and controlling instruments and apparatus, n.e.s.	10.6	6.8	8.8	12.5	9.8	9.3	10.9	9.1	8.0	7.5	14.7	12.9	9.4
Office machines and automatic data-processing machines	4.5	5.5	6.3	6.2	10.7	6.0	5.5	6.4	5.8	7.4	12.0	6.9	8.1
Dyeing, tanning and colouring materials	6.5	4.2	3.8	4.1	5.2	7.2	7.9	6.6	5.9	8.2	15.0	5.0	7.6
Metalliferous ores and metal scrap	3.4	3.9	3.5	4.4	7.2	5.2	3.5	5.1	5.1	6.2	6.5	7.4	7.4
Articles of apparel and clothing accessories	6.6	7.7	6.3	6.8	9.5	7.0	8.6	10.4	5.1	5.0	7.2	6.1	6.9
Power-generating machinery and equipment	7.8	5.8	5.6	4.4	7.8	5.7	6.2	5.7	4.1	7.0	6.9	5.9	6.5
Rubber manufactures, n.e.s.	8.4	5.0	4.7	7.6	7.6	5.6	7.6	7.0	7.3	6.0	7.9	3.7	6.3
Miscellaneous edible products and preparations	5.5	5.6	5.4	6.9	6.4	6.0	4.6	5.3	5.8	6.5	6.2	6.6	5.0
Plastics in non-primary forms	4.8	3.3	5.4	3.7	4.4	5.0	6.1	4.8	4.4	4.7	6.4	4.1	4.8
Inorganic chemicals	3.7	6.0	3.6	5.2	6.0	5.3	6.2	5.5	5.5	6.9	6.8	6.9	4.8
Non-ferrous metals	2.4	3.8	2.3	4.7	4.6	3.2	5.0	4.4	2.7	3.3	4.6	3.7	4.1
Footwear	3.1	4.6	4.0	3.7	4.4	3.2	3.6	3.2	3.1	3.8	4.3	4.9	3.9
Other transport equipment	17.9	2.0	2.5	7.8	4.0	4.8	4.8	4.0	1.8	4.8	13.0	11.4	3.7
Gold, non-monetary (excluding gold ores and concentrates)	0.0	0.0									0.4	0.4	171.0
Sugars, sugar preparations and honey	4.6	5.0	4.5	9.5	10.2	3.9	5.7	12.1	9.7	9.1	6.6	3.0	3.5
Other products	27.0	35.3	34.4	35.7	36.0	30.3	34.6	37.6	30.9	34.0	40.0	31.8	30.8
Grand Total	648.8	628.2	643.4	748.6	766.7	691.8	793.6	802.8	764.2	767.7	893.9	814.0	1,006.9

Source: Uganda Bureau of Statistics

Formal Imports by Region and Country of Origin

The Asian region continued to be the main source of Uganda's merchandise for the period under review. The region's import bill increased to US\$ 413.0 million in August 2022 from US\$ 359.9 million recorded in August 2022. China and India were the leading countries of origin of Uganda's imports in the region. Value of imports from China increased by 20.0 percent to US\$ 175.3 million from US\$ 146.2 million recorded

in July 2022 while those from India increased to US\$ 94.1 million in August 2022 from US\$ 89.2 million recorded in July 2022.

Other Africa (excluding EAC) ranked the second highest source of imports and its import bill increased to US\$ 207.6 million in August 2022 from US\$ 33.1 million recorded in July 2022 contributing 20.6 percent to the total imports in August 2022. Zimbabwe was the

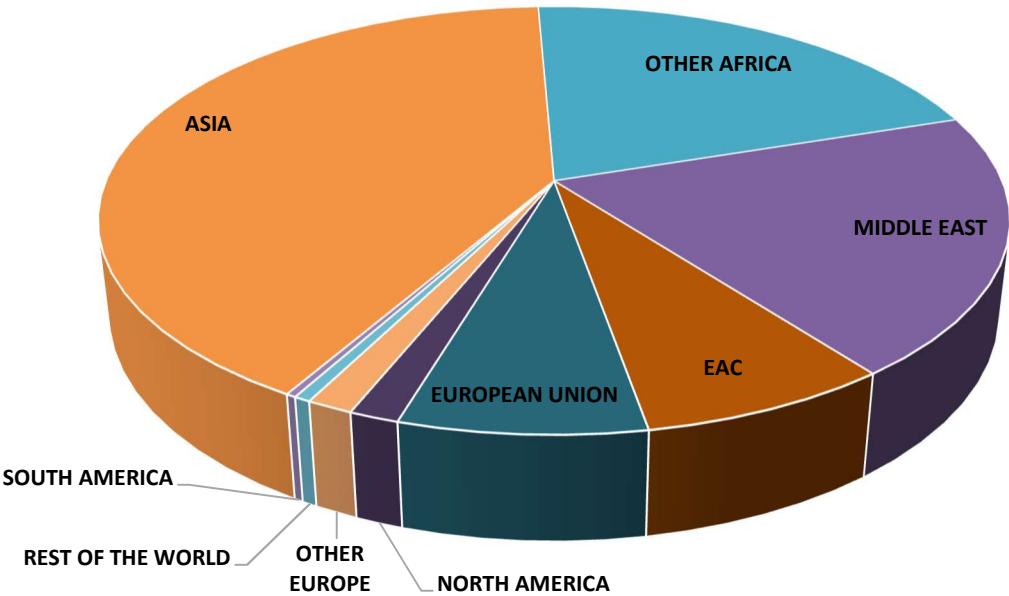
main contributing country within this region accounting for 16.8 percent of total imports in August 2022. Its import bill increased to US\$ 169.3 million in August 2022 from US\$ 0.1 million registered in July 2022. Gold was the main commodity that contributed to the increase in the import bill of August 2022.

Import bill for Middle East increased to 19.7 percent in August 2022 from 27.2 percent registered in July 2022. Expenses

to the region decreased to US\$ 198.0 million in August 2022 from US\$ 221.3 million recorded in July 2022.

Import bill to EAC (East African Community) slightly decreased to US\$ 76.6 million in August 2022 from US\$ 77.0 million. Kenya and Tanzania were the leading sources of imports from EAC with import bills of US\$ 59.1 million and ~~US\$ 15.3~~ US\$ 15.3 million respectively in August 2022 compared to US\$ 59.8 million and US\$ 14.5 million recorded in July 2022. See figure 4 below and annex Table 8.

Figure 4: Imports by Region for the month of August 2022

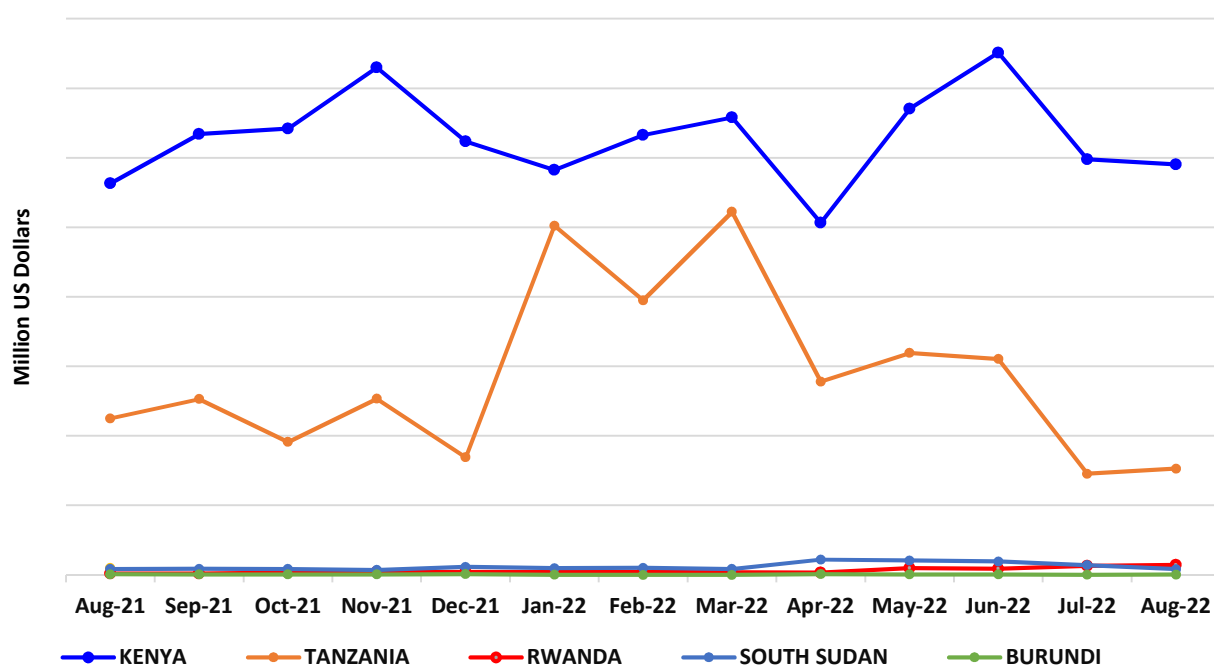


Formal Imports from East African Community (EAC) Countries

In August 2022, Kenya and Tanzania were the major sources of Uganda’s Imports among the EAC member states whose import bills were US\$ 59.1 million and US\$ 15.3 million respectively from US\$ 59.8 million and US\$ 14.5 million registered in July 2022.

Uganda’s Imports from other member states were very low in the period under review. See figure 5 below and Annex table 8.

Figure 4: Imports from EAC Countries, August 2021 to August 2022



Exports by border station

Malaba, Elegu, Entebbe Cargo, Busia Mutukula, Katuna, Padea and Mpondwe were the major border stations through which exports worth US\$ 278.3 million exited the country to different destinations in August 2022 accounting for 94.4 percent of total exports in comparison to US\$ 282.3 million (93.6 percent) registered in July 2022, see Annex Table 7.

Imports by border station

Malaba, Entebbe Cargo, Busia, and Mutukula were the main entry border stations accounting for 99.4 percent (US\$ 1,001.2 million) and 98.9 percent (US\$ 805.3 million) of Uganda's imports recorded in August and July 2022 respectively. See Annex Table 9.

ANNEX

Table 4: Monthly Exports by Value in Million US\$ from August 2021 to August 2022

Commodity	Aug-21	Sep-21	Oct-21	Nov-21	Dec-21	Jan-22	Feb-22	Mar-22	Apr-22	May-22	Jun-22	Jul-22	Aug-22
Traditional Exports													
Coffee	75.1	66.6	61.4	71.1	75.3	62.0	72.2	81.0	70.8	73.0	83.8	83.5	71.2
Cotton	0.4	0.6	0.6	1.2	3.1	5.3	3.7	4.1	5.0	3.0	3.4	0.8	0.0
Tea	4.3	5.9	8.3	7.5	8.0	5.6	8.7	5.8	6.3	10.1	8.4	6.8	5.1
Tobacco	3.2	6.8	5.1	3.4	4.7	3.2	3.7	5.1	3.0	4.9	4.5	3.4	3.6
Non Traditional Exports													
Live Animals	2.4	2.3	1.8	1.8	2.0	1.0	1.1	1.4	2.5	2.8	3.0	2.1	2.7
Fish and Fish Products	9.1	8.3	11.5	14.4	12.5	10.8	13.4	11.5	10.8	12.5	13.2	12.2	10.9
Flowers	7.0	5.5	4.6	4.7	4.7	5.6	6.0	5.2	5.0	6.4	5.6	5.6	4.7
Beans and Other Legumes	7.6	9.1	7.9	13.4	12.6	14.5	10.8	8.1	3.4	3.2	12.2	6.7	5.2
Bananas	0.4	0.4	0.3	0.3	0.2	0.2	0.4	0.6	0.4	0.4	0.2	0.2	0.3
Fruits	0.6	1.8	0.7	1.0	0.8	0.9	1.2	0.5	0.5	1.1	1.3	0.7	1.0
Pepper	0.5	0.4	0.5	0.5	0.7	0.4	0.6	0.7	0.4	0.1	0.2	0.3	0.1
Maize	2.8	3.3	1.9	1.6	3.2	6.9	7.0	5.8	4.7	5.8	4.5	7.2	11.0
Ground Nuts	0.1	0.2	0.2	0.1	0.1	0.2	0.1	0.1	0.1	0.0	0.0	0.0	0.1
Sesame Seeds	1.6	1.7	0.4	1.7	5.5	4.2	5.1	5.1	2.7	3.4	1.2	1.4	1.4
Cocoa Beans	7.7	4.7	6.2	7.7	9.2	7.5	12.1	9.1	10.0	6.0	9.5	3.8	3.7
Electric Current	3.4	3.4	3.5	3.5	3.6	3.8	4.1	3.9	3.4	3.0	3.1	2.8	2.5
Soap	1.1	1.6	1.5	1.4	2.7	1.3	2.4	3.6	4.4	3.4	3.5	1.6	2.2
Hides and Skins	1.0	1.3	0.9	1.3	0.9	0.8	1.3	1.3	1.0	1.0	0.6	1.3	0.8
Gold and Gold Compounds	-	0.1	-	-	-	0.5	-	-	-	-	0.0	-	0.0
Hoes and Hand Tools	0.0	0.0	0.0	0.2	0.1	0.0	0.1	0.0	0.1	0.0	0.1	0.1	0.2
Petroleum Products	8.0	8.2	8.6	7.6	8.8	7.1	6.3	7.9	8.2	8.4	11.0	10.1	10.3
Other Precious Metals	0.0	0.0	0.0	0.0	0.0	0.0	0.1	0.0	0.0	0.0	-	0.0	0.1
Vanilla	1.8	0.3	1.4	1.2	1.4	1.7	0.8	0.2	0.9	1.1	0.4	1.5	5.2
Soya Beans	2.0	0.4	0.3	0.2	0.6	1.4	1.1	0.2	0.4	0.9	0.4	0.1	1.0
Sorghum	0.1	0.3	0.1	0.4	0.3	0.8	4.4	2.5	1.7	1.6	0.8	5.4	7.8
Plastic Products	4.5	5.2	7.8	5.4	5.3	4.1	5.4	6.7	6.3	7.1	5.3	5.4	4.8
Animal/Veg Fats & Oils	9.1	9.5	8.5	10.4	10.0	8.9	8.9	13.6	11.8	8.3	11.4	8.5	11.5
Sugar & Sugar Confectionary	5.3	5.3	6.7	7.6	5.4	7.6	13.1	14.4	19.0	18.9	19.6	12.3	20.3
Iron and Steel	8.3	8.1	8.6	8.6	12.3	10.3	7.5	13.6	10.4	10.5	10.2	9.3	12.3
Cement	6.4	6.7	7.6	7.6	8.7	7.8	8.1	9.3	6.9	7.6	6.3	6.1	7.8
Beer	2.7	2.8	2.6	2.3	2.5	2.3	2.9	2.4	1.9	1.8	2.5	2.9	1.9
Telephones for Cellular	0.0	0.0	0.1	0.1	0.0	0.1	0.0	0.0	0.0	0.0	0.0	0.0	0.1
Rice	0.2	0.2	0.5	0.5	0.4	0.2	0.1	0.2	0.2	0.2	0.1	0.1	2.0
Mineral Water	2.2	1.9	3.3	3.1	3.0	1.6	2.3	3.7	3.5	2.6	2.6	3.0	2.4
Vegetables	1.8	1.8	2.0	2.1	3.0	1.9	1.4	1.8	2.7	2.3	2.4	1.7	2.6
Other nes	65.1	65.7	64.9	73.3	68.1	62.0	73.5	87.8	88.2	98.8	92.1	94.6	77.8
Traditional Exports	82.9	79.9	75.4	83.2	91.1	76.0	88.3	96.0	85.2	91.0	100.2	94.6	79.9
Non Traditional Exports	163.1	160.5	165.0	184.1	188.7	176.2	201.7	221.1	211.5	219.3	223.3	207.2	215.0
Grand Total	246.0	240.5	240.4	267.3	279.8	252.2	290.0	317.1	296.7	310.3	323.4	301.7	294.9

Source: Uganda Bureau of Statistics

Table 5: Monthly Exports by Commodity & Quantity from August 2021 to August 2022

Commodity	Units	Aug-21	Sep-21	Oct-21	Nov-21	Dec-21	Jan-22	Feb-22	Mar-22	Apr-22	May-22	Jun-22	Jul-22	Aug-22
Traditional Exports														
Coffee	Tonnes	42,059	35,135	29,192	31,494	32,213	24,133	26,937	28,681	24,466	27,310	31,822	34,588	30,063
Cotton	Tonnes	201	254	227	608	1,818	2,210	1,596	1,617	1,993	975	1,008	247	72
Tea	Tonnes	4,102	5,464	7,429	6,729	7,610	5,073	7,422	5,082	5,517	8,589	7,342	5,919	4,246
Tobacco	Tonnes	1,095	1,761	1,439	1,068	1,248	775	1,058	1,435	766	1,123	1,205	957	1,043
Non Traditional Exports														
Live Animals	000 Nos.	767	785	532	566	724	458	434	696	470	1,071	1,411	792	1,006
Fish and Fish Products	Tonnes	1,122	1,190	1,569	2,123	1,610	1,665	2,012	1,799	1,584	1,832	2,015	2,334	1,922
Flowers	Tonnes	684	600	511	503	554	555	627	513	582	666	625	668	585
Beans and Other Legumes	Tonnes	14,948	14,984	15,892	27,192	27,385	28,374	21,386	12,257	6,093	4,834	16,416	10,712	6,686
Bananas	Tonnes	767	763	638	592	537	545	629	960	738	658	419	396	440
Fruits	Tonnes	1,343	3,136	1,859	2,440	1,725	1,913	2,204	1,074	1,363	2,095	2,409	1,452	1,356
Pepper	Tonnes	67	52	74	76	105	66	99	104	57	20	39	61	15
Maize	Tonnes	7,841	8,775	4,522	4,018	8,101	19,976	18,209	12,104	10,265	10,442	7,970	14,402	21,644
Ground Nuts	Tonnes	99	166	126	107	85	152	95	44	72	23	24	14	51
Sesame Seeds	Tonnes	1,043	1,014	275	1,134	3,794	3,980	3,650	3,663	2,127	2,223	741	836	848
Cocoa Beans	Tonnes	3,385	1,927	2,503	3,247	3,733	3,131	4,954	3,828	4,288	2,574	4,218	1,705	1,639
Electric Current	000 Kwh	36,801	36,547	36,263	37,028	37,720	41,202	43,577	41,633	36,845	32,983	34,483	30,471	27,714
Soap	Tonnes	1,476	2,059	1,953	1,925	4,015	1,462	2,674	2,942	3,537	2,619	2,910	1,388	1,923
Hides and Skins	Tonnes	765	764	551	719	588	587	954	962	825	672	429	860	625
Gold and Gold Compounds	Kgs	-	57	-	-	-	652	-	-	-	-	21	-	80
Hoes and Hand Tools	000 Nos	31	3	15	94	49	3	63	23	48	8	58	37	161
Petroleum Products	000 Litres	7,556	7,747	8,081	7,201	8,352	6,726	5,924	7,492	7,700	7,895	9,804	9,567	9,745
Other Precious Metals	Tonnes	0	0	0	0	0	0	5	0	0	1		1	24
Vanilla	Tonnes	15	2	11	10	11	13	6	1	7	8	3	13	42
Soya Beans	Tonnes	2,367	401	347	246	655	1,425	1,217	248	434	984	435	152	1,123
Sorghum	Tonnes	215	432	178	460	483	1,114	5,345	4,149	2,979	2,142	1,100	6,078	8,322
Plastic Products	Tonnes	3,893	4,254	5,030	3,954	3,560	2,365	2,869	3,656	3,921	4,794	3,397	3,945	3,659
Animal/Veg Fats & Oils	Tonnes	6,562	6,804	5,845	7,364	6,902	6,213	5,909	7,724	6,947	4,591	5,432	4,787	7,517
Sugar and Sugar Confectionary	Tonnes	9,489	9,713	12,418	12,887	8,470	12,031	21,620	22,213	27,262	26,607	26,576	16,598	27,701
Iron and Steel	Tonnes	7,830	7,573	8,096	7,452	11,753	9,700	7,765	13,800	11,746	8,796	9,169	7,715	10,950
Cement	Tonnes	43,736	47,667	54,984	54,366	56,712	51,128	56,388	59,595	41,372	46,790	36,261	39,131	51,912
Beer	000 Litres	2,932	3,199	2,831	2,384	2,792	2,514	3,205	2,836	2,316	2,116	2,899	3,016	2,422
Telephones for Cellular	000 Nos	0	1	1	1	0	1	0	0	0	0	0	0	1
Rice	Tonnes	454	404	692	664	597	309	200	215	232	197	107	114	1,870
Mineral Water	000 Litres	4,834	4,068	6,309	6,682	6,680	4,337	5,381	7,433	7,745	5,334	5,734	6,025	5,119
Vegetables	Tonnes	2,367	2,230	2,834	2,690	3,130	2,253	1,431	1,765	2,073	1,973	1,829	1,484	2,068

Source: Uganda Bureau of Statistics

Table 6: Monthly Exports by Region, Country of Destination and Value in Million US\$ from August 2021 to August 2022

Region/Country	Aug-21	Sep-21	Oct-21	Nov-21	Dec-21	Jan-22	Feb-22	Mar-22	Apr-22	May-22	Jun-22	Jul-22	Aug-22
EAC	89.4	91.6	99.3	107.1	108.8	105.8	116.1	125.9	121.3	133.9	126.7	124.5	133.7
South Sudan	34.1	36.2	46.9	44.4	47.3	40.3	51.7	58.4	52.6	51.2	49.2	54.3	67.4
Kenya	39.4	39.6	37.6	44.0	37.9	44.9	48.5	50.2	42.9	58.2	54.0	44.8	42.4
Tanzania	9.9	7.4	9.1	12.9	15.5	14.5	9.9	9.9	17.8	14.3	11.4	10.9	11.7
Burundi	5.9	8.3	5.6	5.8	8.0	6.0	5.9	7.2	8.0	10.2	11.6	9.8	7.2
Rwanda	0.1	0.0	0.1	0.1	0.1	0.1	0.1	0.1	0.1	0.1	0.4	4.7	5.0
European Union	61.8	47.3	51.6	62.5	66.1	54.1	58.6	66.7	55.3	61.2	73.2	64.5	62.0
Italy	24.0	14.2	13.7	19.2	23.4	13.1	13.7	22.1	15.3	23.3	29.8	27.8	25.2
Germany	13.3	10.0	11.1	14.2	15.2	11.8	14.6	11.5	15.2	12.4	13.9	10.8	11.8
Netherlands	8.8	7.6	7.2	7.6	6.6	6.4	8.4	9.0	7.8	7.8	9.7	6.2	6.3
Belgium	8.0	6.6	7.2	7.3	7.4	6.5	5.7	8.2	8.0	6.6	5.6	5.8	6.1
Spain	2.4	2.8	5.1	4.0	4.8	3.5	5.2	3.3	2.5	3.2	5.5	5.3	4.7
Portugal	1.8	1.5	3.0	4.3	1.9	4.2	3.6	4.7	2.6	4.0	2.9	2.3	2.1
Other Countries	3.4	4.5	4.2	6.0	6.9	8.6	7.3	7.9	4.0	3.9	5.7	6.3	5.7
Other Africa	53.9	62.6	50.5	52.7	53.3	52.1	58.2	76.8	62.9	60.0	64.3	65.9	54.5
D.R.Congo	28.9	32.3	28.4	33.7	30.4	31.3	35.0	44.5	39.7	35.4	38.6	38.2	33.8
Sudan	7.4	6.6	0.8	1.5	3.2	8.3	7.7	19.7	11.6	6.6	7.3	9.9	6.1
Morocco	1.8	4.6	3.9	3.5	4.5	3.3	1.9	1.6	1.8	1.5	2.9	3.6	3.4
Tunisia	-	-	-	-	-	-	2.4	0.8	4.4	2.7	2.5	4.3	3.3
Ethiopia	1.5	2.0	1.5	0.8	1.4	1.4	1.5	1.4	0.2	2.0	1.8	2.0	2.9
Other Countries	14.3	17.1	15.9	13.2	13.7	7.8	9.7	8.8	5.2	11.8	11.1	7.9	5.1
Asia	22.3	20.4	18.1	22.4	23.2	21.5	30.3	24.4	26.8	28.5	28.3	21.0	22.2
India	8.6	9.6	7.6	7.2	6.1	7.3	10.3	6.6	6.0	4.9	7.6	5.5	8.1
China	1.4	2.5	2.4	2.6	5.6	3.0	6.0	6.3	4.2	10.8	6.9	7.4	6.9
Hong Kong	2.6	2.1	2.0	3.2	1.9	1.0	1.5	1.3	2.3	3.0	3.7	1.8	2.9
Russian Federation	2.3	1.2	1.3	0.2	1.2	1.4	1.9	0.6	0.7	1.7	1.5	0.3	1.0
Indonesia	3.0	1.6	0.9	0.9	2.1	2.0	3.9	3.7	7.8	4.0	3.3	1.9	0.6
Other Countries	4.5	3.3	3.9	8.3	6.2	6.7	6.7	5.9	5.9	4.2	5.4	4.0	2.6
Other Europe	6.6	5.9	5.5	6.0	5.4	5.4	6.0	5.6	6.8	7.9	9.5	7.2	8.3
Switzerland	2.9	2.4	2.1	0.7	1.6	1.3	2.2	2.4	3.6	1.4	4.5	2.5	3.9
Turkey	1.7	1.9	1.9	2.4	2.1	2.5	2.4	2.0	1.1	2.3	2.1	2.5	3.1
United Kingdom	0.7	0.6	0.6	0.9	0.9	1.1	1.4	1.1	2.1	4.1	2.7	2.0	1.2
Other Countries	1.3	1.0	0.9	1.9	0.7	0.5	0.1	0.1	0.0	0.1	0.1	0.1	0.1
Middle East	6.0	5.9	7.5	7.8	9.9	6.2	8.8	8.1	8.2	7.6	7.5	9.3	7.8
Qatar	1.5	1.6	1.7	1.7	1.3	0.9	1.1	1.5	0.7	2.4	2.2	2.4	2.4
United Arab Emirates	2.2	2.2	2.4	2.1	4.9	2.6	2.8	4.2	4.3	2.2	2.3	2.9	2.1
Israel	1.6	1.0	2.2	2.7	1.7	1.3	3.7	1.0	1.3	1.7	1.5	2.6	1.8
Other Countries	0.8	1.1	1.2	1.4	2.0	1.4	1.2	1.4	1.8	1.3	1.4	1.5	1.5
North America	4.8	6.4	7.2	8.1	12.0	6.4	10.8	8.0	13.3	9.2	12.2	7.0	6.1
United States	3.7	5.4	6.4	7.2	10.6	4.7	8.9	7.6	7.3	7.6	9.6	5.3	4.5
Canada	0.3	0.3	0.5	0.7	1.1	1.2	1.1	0.3	5.6	0.7	0.4	0.3	0.9
Other Countries	0.8	0.6	0.3	0.3	0.2	0.5	0.8	0.1	0.4	0.9	2.1	1.4	0.7
South America	0.0	0.1	0.0	0.3	0.3	0.0	0.0	0.0	0.0	0.0	1.4	0.2	0.1
Rest of the World	1.2	0.4	0.7	0.3	1.0	0.8	1.1	1.6	2.1	2.0	0.5	2.2	0.3
Grand Total	246.0	240.5	240.4	267.3	279.8	252.2	290.0	317.1	296.7	310.3	323.4	301.7	294.9

Source: Uganda Bureau of Statistics

Table 7: Monthly Exports by Border Station and Value in Million US\$ from August 2021 to August 2022

Border Stations	Aug-21	Sep-21	Oct-21	Nov-21	Dec-21	Jan-22	Feb-22	Mar-22	Apr-22	May-22	Jun-22	Jul-22	Aug-22
Malaba	119.5	106.0	104.7	121.1	128.2	108.0	136.5	137.2	127.5	143.6	146.8	125.2	107.1
Elegu	30.3	32.0	38.1	36.0	37.0	36.0	45.5	52.4	47.0	46.0	44.5	50.1	63.1
Entebbe Cargo	26.0	27.5	23.0	25.6	23.8	22.4	23.1	24.8	25.2	26.2	27.8	28.3	31.3
Busia	20.9	22.1	21.4	24.8	29.1	28.5	26.1	33.1	24.9	28.5	35.7	28.8	30.3
Mutukula	12.5	10.3	12.3	15.4	18.2	17.3	13.7	13.3	20.7	19.2	14.0	12.2	15.1
Katuna	4.4	6.9	3.6	3.0	5.9	3.5	5.0	8.1	9.4	9.9	14.2	18.8	12.9
Padea	5.6	8.3	4.4	3.6	3.6	9.1	8.7	7.1	7.1	7.3	10.8	10.7	9.5
Mpondwe	9.1	9.7	9.2	10.1	9.4	9.4	8.9	12.0	10.9	10.7	11.8	8.2	9.2
Oraba	4.0	3.9	9.3	8.6	8.0	4.8	6.3	6.0	5.5	5.2	4.8	4.4	4.6
Vurra	3.0	2.1	2.6	2.4	3.0	3.1	3.1	3.6	3.4	2.7	4.2	3.3	3.5
Ntoroko	2.3	2.8	2.3	5.0	4.5	2.4	5.9	12.1	9.7	4.5	2.2	5.7	2.9
Chanika	0.2	0.2	0.1	0.4	0.2	0.5	0.3	0.3	0.5	0.8	1.5	1.1	1.9
Ishasha	0.1	0.2	0.8	0.3	1.1	0.2	0.1	0.3	0.3	0.1	0.6	2.1	1.6
Goli	0.8	0.3	0.2	2.1	0.8	0.7	1.5	0.9	0.7	1.3	1.4	1.9	1.1
Mirama Hills	3.2	3.8	4.6	4.0	3.3	2.8	2.0	0.8	0.5	0.7	0.3	0.2	0.4
Lia	0.7	1.1	0.4	0.6	0.1	0.3	0.1	0.3	0.3	0.3	0.1	0.2	0.2
Lwakhakha	0.2	0.3	0.3	0.3	0.1	0.2	0.2	0.5	0.2	0.2	0.2	0.1	0.1
Busunga	0.0	-	0.0	-	-	0.0	-	-	-	0.0	-	0.1	0.1
Suam River	0.0	0.0	0.0	0.0	0.1	0.1	0.1	0.1	0.0	0.0	0.1	0.0	0.0
Kikagati	0.0	-	-	-	-	-	-	0.1	0.0	0.2	0.1	0.3	0.0
Madi Opei	0.0	0.0	0.0	-	-	-	0.0	0.0	0.0	0.0	0.1	0.0	0.0
Bunagana	3.3	3.0	3.1	3.6	3.5	3.1	2.7	4.1	2.9	3.1	2.1	0.1	-
Paidha	-	-	0.0	-	-	0.0	-	-	-	-	-	-	-
Port Bell	-	-	-	0.3	-	-	0.0	-	-	-	-	-	-
Grand Total	246.0	240.5	240.4	267.3	279.8	252.2	290.0	317.1	296.7	310.3	323.4	301.7	294.9

Source: Uganda Bureau of Statistics

Table 8: Monthly Imports by Region, Country of Origin & Value in Million US\$ from August 2021 to August 2022

Region/Country	Aug-21	Sep-21	Oct-21	Nov-21	Dec-21	Jan-22	Feb-22	Mar-22	Apr-22	May-22	Jun-22	Jul-22	Aug-22
Asia	309.5	292.3	308.0	379.2	375.9	287.4	351.3	352.0	347.5	382.9	407.8	359.9	413.0
China	114.5	102.0	140.2	176.8	165.3	114.0	177.2	139.1	126.7	122.3	181.8	146.2	175.3
India	104.8	87.0	80.9	92.8	82.0	80.1	86.9	109.3	120.4	118.3	128.1	89.2	94.1
Japan	40.2	37.2	30.5	28.8	42.1	26.6	26.6	32.3	27.9	38.7	42.3	36.7	36.9
Taiwan	1.8	2.6	1.9	1.4	1.5	2.5	2.2	1.2	2.2	3.4	1.1	1.0	34.9
South Korea	4.3	3.4	3.2	5.5	6.4	11.3	8.8	14.0	15.2	12.9	13.7	21.3	17.9
Malaysia	14.1	12.2	14.8	47.6	27.8	23.5	17.5	23.3	17.7	48.0	15.6	29.9	15.4
Indonesia	7.1	18.4	18.6	10.7	15.4	10.5	12.5	17.2	12.9	11.0	8.9	7.5	13.4
Russian Federation	5.6	12.3	5.6	4.2	1.6	2.3	3.8	1.5	1.1	2.2	2.5	11.5	10.1
Other Countries	22.8	29.5	17.8	15.6	35.5	18.8	19.7	15.6	24.6	28.5	16.2	28.1	25.1
Other Africa	39.1	25.9	22.5	30.9	32.2	24.6	26.2	36.0	34.5	36.5	27.2	33.1	207.6
Egypt	7.7	8.0	6.0	13.8	14.4	7.8	7.0	16.9	10.4	17.0	11.0	9.1	14.6
South Africa	23.0	12.5	11.0	9.2	11.6	12.9	14.3	16.1	14.3	12.0	6.8	14.4	13.1
Zimbabwe	0.0	0.0		0.0	0.0	0.0	0.0	0.0	0.1	0.0	0.0	0.1	169.3
Swaziland	3.6	0.3	1.5	2.0	1.1	2.1	1.8	1.6	3.8	2.4	2.1	1.7	4.5
D.R.Congo	0.6	0.5	0.5	0.6	1.1	0.3	0.4	0.4	1.0	1.8	2.0	1.5	2.2
Other Countries	4.2	4.6	3.5	5.3	4.0	1.5	2.7	1.0	5.0	3.3	5.2	6.3	4.0
Middle East	101.8	126.1	136.0	125.6	113.0	109.1	125.3	173.0	179.6	150.0	205.6	221.3	198.0
United Arab Emirates	70.9	73.0	81.6	81.6	73.9	47.6	72.3	101.1	130.3	103.1	161.6	137.2	125.8
Saudi Arabia	25.0	36.9	47.1	35.9	28.8	34.0	36.7	61.0	42.0	30.3	25.4	36.4	35.1
Oman	0.6	2.1	3.4	0.6	1.8	1.5	0.2	0.6	0.9	12.8	14.3	41.0	21.4
Kuwait	2.2	11.6	0.3	4.6	1.4	18.3	12.9	6.2	1.1	0.3	0.3	1.7	10.1
Qatar	0.6	0.8	0.7	1.5	1.0	1.1	0.8	1.5	3.0	1.0	0.8	2.0	2.9
Other Countries	3.1	2.4	3.7	2.9	7.2	7.7	3.2	4.2	5.4	3.5	3.9	5.0	5.5
EAC	80.0	89.9	84.6	99.5	80.9	109.9	104.2	119.3	81.1	102.1	109.0	77.0	76.6
Kenya	56.3	63.4	64.2	73.0	62.4	58.3	63.3	65.8	50.7	67.1	75.1	59.8	59.1
Tanzania	22.5	25.3	19.1	25.3	16.9	50.2	39.5	52.2	27.8	31.9	31.1	14.5	15.3
Rwanda	0.2	0.2	0.3	0.4	0.4	0.4	0.4	0.4	0.3	1.0	0.9	1.3	1.4
South Sudan	0.8	0.9	0.8	0.7	1.1	0.9	1.0	0.9	2.2	2.1	1.9	1.4	0.8
Burundi	0.1	0.1	0.1	0.1	0.1	0.0	0.0	0.0	0.1	0.1	0.0	0.0	0.0
European Union	71.6	47.5	53.2	55.4	100.4	70.4	106.8	47.1	73.1	46.5	61.5	71.0	74.2
Netherlands	22.7	12.2	9.6	8.2	29.9	5.4	41.5	9.0	27.2	7.4	6.1	16.5	30.3
Germany	15.4	8.1	8.2	9.7	12.3	9.9	9.6	9.2	7.3	8.7	8.2	11.0	11.3
Ireland	3.6	1.0	5.0	3.3	1.5	6.8	5.1	2.1	2.0	1.4	7.0	4.1	5.3
Belgium	9.9	8.5	8.2	5.7	30.2	14.1	24.5	3.1	21.3	4.7	7.8	5.4	5.1
Italy	5.2	4.3	3.1	3.7	6.0	4.1	4.3	7.9	6.7	5.5	9.6	8.0	4.6
Finland	1.0	1.0	0.9	1.0	0.8	0.6	1.4	0.9	1.0	1.8	4.5	3.7	2.6
Other Countries	14.8	13.5	19.0	24.9	20.4	30.1	21.9	15.8	8.8	18.8	22.8	26.0	17.6
North America	21.2	24.9	15.0	31.2	27.4	35.2	38.2	33.0	22.6	17.1	48.4	15.7	15.3
United States	17.1	22.4	12.6	23.1	23.4	28.5	36.2	30.5	21.7	15.4	37.8	14.2	14.0
Canada	1.5	1.6	1.8	7.9	3.9	6.6	1.4	2.3	0.8	1.4	9.9	1.1	1.1
Other Countries	2.6	0.8	0.6	0.2	0.1	0.2	0.6	0.2	0.2	0.4	0.7	0.4	0.2
Other Europe	18.5	16.7	21.0	20.6	29.1	37.5	18.3	19.8	11.7	12.4	19.6	20.6	13.6
Turkey	5.4	5.4	4.7	5.4	5.7	28.4	9.4	9.4	6.0	5.3	5.2	7.2	6.6
United Kingdom	9.6	5.3	6.6	6.2	6.8	5.7	6.1	7.5	4.7	5.8	7.3	7.8	5.4
Switzerland	2.1	2.2	0.6	1.0	4.4	1.7	1.4	2.2	0.5	0.9	6.0	2.8	1.2
Other Countries	1.3	3.7	9.1	8.0	12.2	1.6	1.4	0.7	0.4	0.4	1.1	2.9	0.4
South America	2.6	1.8	2.1	5.2	6.2	16.8	22.5	21.1	12.8	10.2	7.9	6.1	3.3
Brazil	1.1	1.1	1.7	0.9	3.2	2.2	1.2	1.7	2.5	0.6	1.4	0.9	2.5
Argentina	1.4	0.5	0.1	4.0	3.0	14.0	21.2	19.3	10.2	9.6	6.1	5.0	0.4
Rest of the World	4.7	3.2	1.0	1.0	1.4	0.9	0.7	1.5	1.3	10.0	6.9	9.3	5.2
Grand Total	648.8	628.2	643.4	748.6	766.7	691.8	793.6	802.8	764.2	767.7	893.9	814.0	1,006.9

Source: Uganda Bureau of Statistics

Table 9: Monthly Imports by Border Station and Value in Million US\$ from August 2021 to August 2022

Border Stations	Aug-21	Sep-21	Oct-21	Nov-21	Dec-21	Jan-22	Feb-22	Mar-22	Apr-22	May-22	Jun-22	Jul-22	Aug-22
Malaba	417.4	396.1	410.2	478.7	495.0	444.6	505.8	525.9	468.2	474.8	532.9	534.3	561.5
Entebbe Cargo	50.2	61.5	58.6	93.9	94.0	64.4	109.9	68.9	94.9	59.2	96.7	46.1	215.6
Busia	146.3	133.3	141.9	136.7	147.1	130.7	135.6	151.9	151.0	158.5	174.0	163.4	168.2
Mutukula	33.1	34.7	30.1	36.2	27.3	48.6	39.3	52.2	45.4	69.2	84.4	61.5	55.8
Katuna	0.2	0.6	0.3	0.6	0.4	0.1	0.6	0.7	0.3	1.4	1.1	1.5	1.6
Port Bell	-	-	0.0	-	0.0	-	-	0.0	-	-	-	0.0	1.6
Elegu	0.7	1.0	1.2	1.1	1.7	0.9	1.0	0.9	2.3	2.1	1.9	1.7	0.9
Chanika	0.1	0.1	0.0	0.0	0.1	0.1	0.1	0.0	0.4	0.1	0.4	0.6	0.3
Mirama Hills	0.0	0.0	0.3	0.4	0.2	0.3	0.6	0.1	0.0	0.2	0.4	0.4	0.3
Mpondwe	0.0	0.2	0.0	0.1	0.0	0.0	0.0	0.0	0.6	1.0	0.4	0.5	0.3
Lwakhakha	0.3	0.3	0.2	0.2	0.2	0.1	0.2	0.4	0.3	0.4	0.4	2.5	0.3
Goli	0.1	0.1	0.0	0.0	0.5	0.0	0.2	0.1	0.1	0.1	0.0	0.1	0.1
Padea	0.0	0.1	0.1	0.1	0.1	0.1	0.0	0.1	0.1	0.1	0.1	0.1	0.1
Lia	0.0	0.1	0.0	0.1	0.1	0.1	0.1	0.1	0.1	0.3	0.6	0.3	0.1
Madi Opei	0.0	0.0	0.1	0.2	0.0	0.0	0.0	0.0	0.0	0.0	0.0	0.0	0.0
Vurra	0.1	0.1	0.1	0.1	0.1	0.1	0.1	1.2	0.4	0.0	0.3	0.9	0.0
Suam River	0.0	0.0	0.0	0.0	0.0	0.0	0.0	0.0	0.0	0.0	0.0	0.0	0.0
Ishasha River	-	-	-	-	-	-	-	-	-	-	-	0.0	0.0
Oraba	0.0	0.0	0.0	0.0	0.0	0.0	0.0	0.0	0.0	0.0	0.0	0.0	0.0
Bugango	0.0	0.0	0.0	0.0	0.0	0.0	0.0	0.0	0.0	-	0.0	0.0	0.0
Kikagati	0.0	0.0	0.2	0.1	0.0	1.6	0.1	0.0	0.0	0.1	0.3	0.0	0.0
Busunga	0.0	0.0	0.0	0.0	0.0	0.0	0.0	0.0	0.0	0.0	0.0	0.0	0.0
Ntoroko	0.0	0.0	0.0	0.0	0.0	0.0	0.0	0.0	0.0	0.0	0.0	0.0	0.0
Bunagana	0.0	0.0	0.0	0.0	0.0	0.1	0.0	0.1	0.0	0.0	0.0	-	-
Grand Total	648.8	628.2	643.4	748.6	766.7	691.8	793.6	802.8	764.2	767.7	893.9	814.0	1,006.9

Source: Uganda Bureau of Statistics

Table 9: Monthly Imports by Value in Million US\$ from August 2021 to August 2022

SITC2	SITC2 Description	Aug-21	Sep-21	Oct-21	Nov-21	Dec-21	Jan-22	Feb-22	Mar-22	Apr-22	May-22	Jun-22	Jul-22	Aug-22
00	Live animals other than animals of division 03	1.0	1.1	0.9	1.2	1.6	0.6	0.6	2.0	0.6	0.5	0.9	0.5	0.4
01	Meat and meat preparations	0.4	0.4	0.3	0.3	1.1	0.3	0.3	0.4	0.4	0.4	0.3	0.5	1.3
02	Dairy products and bird's eggs	0.8	1.1	0.9	0.8	1.1	0.6	0.9	0.8	0.6	0.8	1.0	0.8	0.6
03	Fish, crustaceans and molluscs and preparations thereof	0.5	0.2	0.6	0.6	0.7	0.8	1.0	0.3	0.4	0.4	0.3	0.3	0.4
04	Cereals and cereal preparations	34.5	37.9	28.0	34.9	29.3	44.8	43.2	40.7	32.9	43.6	38.2	40.6	28.8
05	Vegetables and fruit	5.0	8.9	12.0	11.7	2.9	4.3	4.1	7.4	3.5	5.5	8.9	2.8	3.1
06	Sugars, sugar preparations and honey	4.6	5.0	4.5	9.5	10.2	3.9	5.7	12.1	9.7	9.1	6.6	3.0	3.5
07	Coffee, tea, cocoa, spices, and manufactures thereof	0.8	0.7	0.7	1.0	1.2	0.6	0.9	1.0	0.7	0.7	0.8	1.0	0.7
08	Feeding stuff for animals (not including un-milled cereals)	13.0	10.2	9.4	10.5	10.4	5.3	6.2	9.1	6.0	9.4	10.6	11.4	11.1
09	Miscellaneous edible products and preparations	5.5	5.6	5.4	6.9	6.4	6.0	4.6	5.3	5.8	6.5	6.2	6.6	5.0
11	Beverages	3.1	3.4	4.0	3.7	3.8	3.6	3.3	4.0	3.0	2.8	3.5	3.9	2.5
12	Tobacco and tobacco manufactures	0.3	0.5	0.3	0.4	0.4	0.3	0.3	0.3	0.4	0.5	0.3	0.6	0.1
21	Hides, skins and furskins, raw	0.1	0.1	0.1	0.1	0.1	0.1	0.1	0.1	0.1	0.1	0.1	0.1	0.2
22	Oil-seeds and oleaginous fruits	0.5	0.8	0.1	1.3	0.3	1.2	0.9	1.0	1.8	1.4	2.3	0.0	1.0
23	Crude rubber (including synthetic and reclaimed)	0.8	0.6	0.6	0.8	1.8	0.6	1.2	1.1	1.0	0.6	0.6	0.7	0.6
24	Cork and wood	0.1	0.1	0.1	0.1	0.1	0.1	0.0	0.1	0.1	0.1	0.1	0.0	0.0
25	Pulp and waste paper	0.1	0.1	0.1	0.1	0.3	0.2	0.3	1.0	0.6	0.6	0.5	0.5	0.6
26	Textile fibres (other than wool tops), wastes; not manufactured	8.2	7.8	9.9	9.9	12.6	10.1	13.8	11.3	7.9	9.9	9.1	9.5	9.8
27	Crude fertilizers and minerals (excl. coal, petrol, precious stones)	4.0	4.2	4.0	3.6	5.6	4.1	4.8	4.1	4.8	7.2	4.1	3.9	2.9
28	Metalliferous ores and metal scrap	3.4	3.9	3.5	4.4	7.2	5.2	3.5	5.1	5.1	6.2	6.5	7.4	7.4
29	Crude animal and vegetable materials, nes	1.2	1.1	1.4	1.1	1.1	1.6	2.1	1.3	0.8	0.7	1.0	0.9	1.2
32	Coal, coke and briquettes	0.2	0.2	0.3	0.5	0.4	0.5	0.4	0.5	0.5	0.6	0.5	2.3	0.6
33	Petroleum, petroleum products and related materials	104.8	104.7	114.5	130.9	136.4	133.7	127.3	157.2	149.4	144.1	202.3	222.3	232.6
34	Gas, natural and manufactured	1.4	3.5	1.6	1.6	2.1	2.9	3.9	1.1	2.2	3.0	3.8	1.2	3.4
35	Electric current	0.2	0.2	0.2	0.2	0.2	0.1	0.1	0.1	0.2	0.3	0.2	0.4	0.5
41	Animal oils and fats	0.0	0.0	0.0	0.0	0.1	0.1	0.0	0.0	0.2	0.0	0.0		0.0
42	Fixed vegetable fats and oils, crude, refined or fractionated	18.5	30.9	32.3	32.1	37.0	33.6	25.5	37.2	24.0	52.8	23.0	39.8	25.6
43	Anim. or veget. fats and oils, processed; animal or vegetable waxes	0.1	0.2	0.1	0.0	0.2	0.0	0.1	0.2	0.2	0.3	0.2	0.2	0.2
51	Organic chemicals	9.1	7.8	13.3	10.2	8.7	12.1	19.1	14.9	14.4	16.7	12.5	8.8	14.0
52	Inorganic chemicals	3.7	6.0	3.6	5.2	6.0	5.3	6.2	5.5	5.5	6.9	6.8	6.9	4.8
53	Dyeing, tanning and colouring materials	6.5	4.2	3.8	4.1	5.2	7.2	7.9	6.6	5.9	8.2	15.0	5.0	7.6
54	Medical and pharmaceutical products	40.8	39.3	31.9	66.3	56.8	33.8	95.7	44.8	95.3	42.9	58.1	33.8	26.5
55	Essential oils, perfume materials; toilet cleaning preparations	12.1	6.7	8.8	12.5	10.4	14.0	17.5	13.6	14.2	11.4	13.7	12.1	15.2

Table 9: (ct'd) Monthly Imports by Value in Million US\$ from August 2021 to August 2022

SITC2	SITC2 Description	Aug-21	Sep-21	Oct-21	Nov-21	Dec-21	Jan-22	Feb-22	Mar-22	Apr-22	May-22	Jun-22	Jul-22	Aug-22
56	Fertilizers , manufactured (other than those of group 272)	3.8	3.9	2.1	2.2	5.4	2.5	3.3	3.7	4.4	2.2	2.5	3.9	10.2
57	Plastics in primary forms	26.6	28.3	29.1	45.6	43.2	48.7	44.3	45.8	32.7	38.4	45.9	33.5	40.2
58	Plastics in non-primary forms	4.8	3.3	5.4	3.7	4.4	5.0	6.1	4.8	4.4	4.7	6.4	4.1	4.8
59	Chemical materials and products, nes	20.3	11.8	22.4	16.4	24.6	26.8	16.5	20.3	15.3	27.0	24.7	23.4	23.7
61	Leather, leather manufactures, nes, and dressed furskins	0.0	0.0	0.0	0.0	0.0	0.0	0.0	0.0	0.0	0.0	0.0	0.0	0.0
62	Rubber manufactures, nes	8.4	5.0	4.7	7.6	7.6	5.6	7.6	7.0	7.3	6.0	7.9	3.7	6.3
63	Cork and wood manufactures (excl. furniture)	0.2	0.3	0.2	0.2	0.4	0.2	0.2	0.3	0.2	0.3	0.2	0.3	0.7
64	Paper, paperboard, and articles of paper pulp, paper or paperboard	13.8	12.8	11.8	13.9	13.8	14.4	13.9	18.2	17.5	18.6	23.4	19.4	19.0
65	Textile yarn, fabrics, made-up articles, nes, and related products	9.2	9.0	6.7	10.5	12.3	7.9	11.4	10.3	9.3	10.4	11.6	8.4	12.8
66	Non-metallic mineral manufactures, nes	21.2	24.8	21.8	19.2	20.7	21.4	16.9	26.0	31.9	32.2	31.8	24.5	16.1
67	Iron and steel	54.6	44.0	45.7	46.2	36.8	33.5	52.5	59.3	52.9	42.5	50.7	49.2	73.2
68	Non-ferrous metals	2.4	3.8	2.3	4.7	4.6	3.2	5.0	4.4	2.7	3.3	4.6	3.7	4.1
69	Manufactures of metals, nes	12.1	11.1	10.7	13.5	16.6	10.3	14.1	13.7	12.2	8.7	12.5	9.4	10.5
71	Power generating machinery and equipment	7.8	5.8	5.6	4.4	7.8	5.7	6.2	5.7	4.1	7.0	6.9	5.9	6.5
72	Machinery specialized for particular industries	20.4	18.6	32.5	30.3	39.3	24.8	26.7	26.9	29.4	24.0	24.6	31.2	31.0
73	Metal working machinery	1.4	2.1	1.2	1.7	3.1	1.4	1.8	3.0	3.7	1.5	2.4	2.4	3.1
74	General industrial machinery and equipment, nes, machine parts,	18.0	17.6	12.0	14.2	16.2	14.6	15.0	18.6	12.6	15.3	20.1	15.2	18.0
75	Office machines and automatic data-processing machines	4.5	5.5	6.3	6.2	10.7	6.0	5.5	6.4	5.8	7.4	12.0	6.9	8.1
76	Telecommunications and sound recording/reproducing apparatus,	11.8	10.4	10.0	19.2	18.4	16.5	14.6	16.9	18.0	12.2	30.3	15.4	14.4
77	Electrical machinery, apparatus and appliances, nes	17.9	22.4	23.3	17.0	20.3	17.9	27.9	22.9	17.3	17.2	18.6	15.6	17.4
78	Road vehicles (including air-cushion vehicles)	51.6	53.0	55.1	57.5	49.6	45.7	51.9	51.2	51.5	56.4	57.7	55.3	58.5
79	Other transport equipment	17.9	2.0	2.5	7.8	4.0	4.8	4.8	4.0	1.8	4.8	13.0	11.4	3.7
81	Prefabricated buildings; sanitary, plumbing, etc, fixtures and fittings	2.9	3.4	2.5	2.1	3.5	2.5	4.1	5.0	2.5	2.9	5.2	4.5	3.4
82	Furniture and parts thereof; bedding, mattresses, mattress	0.9	1.2	1.2	1.4	1.8	2.3	1.7	1.1	0.9	1.3	1.5	2.4	1.7
83	Travel goods, handbags and similar containers	0.6	0.7	0.8	0.8	1.2	0.9	1.1	1.0	1.1	1.1	1.0	0.9	1.2
84	Articles of apparel and clothing accessories	6.6	7.7	6.3	6.8	9.5	7.0	8.6	10.4	5.1	5.0	7.2	6.1	6.9
85	Footwear	3.1	4.6	4.0	3.7	4.4	3.2	3.6	3.2	3.1	3.8	4.3	4.9	3.9
87	Professional, scientific and controlling instruments and apparatus,	10.6	6.8	8.8	12.5	9.8	9.3	10.9	9.1	8.0	7.5	14.7	12.9	9.4
88	Photographic apparatus, equipment and supplies and optical goods;	0.3	0.4	0.4	0.4	1.0	0.5	0.4	0.5	0.3	0.5	0.2	0.5	0.5
89	Miscellaneous manufactured articles, nes	9.8	10.8	11.0	12.2	14.0	11.9	15.4	12.8	10.2	11.4	13.6	10.7	14.3
96	Coin (excl. gold coin), not being legal tender	-	-	0.0	-	-	0.0	-	0.0	-	-	-	-	-
97	Gold, non-monetary (excl. gold ores and concentrates)	0.0	0.0	-	-	-	-	-	-	-	-	0.4	0.4	171.0
	Grand Total	648.8	628.2	643.4	748.6	766.7	691.8	793.6	802.8	764.2	767.7	893.9	814.0	1,006.9