



THE REPUBLIC OF UGANDA

National Population and Housing Census 2014

Area Specific Profiles

Busia District

April 2017

This report presents findings of National Population and Housing Census (NPHC) 2014 undertaken by the Uganda Bureau of Statistics (UBOS). Additional information about the Census may be obtained from the UBOS Head Office, Statistics House. Plot 9 Colville Street, P. O. Box 7186, Kampala, Uganda; Telephone: +256-414 706000 Fax: +256-414 237553; E-mail: ubos@ubos.org; Website: www.ubos.org

Cover Photos: Uganda Bureau of Statistics

Recommended Citation

Uganda Bureau of Statistics 2017, The National Population and Housing Census 2014 – Area Specific Profile Series, Kampala, Uganda.

FOREWORD

Demographic and socio-economic data are useful for planning and evidence-based decision making in any country. Such data are collected through Population Censuses, Demographic and Socio-economic Surveys, Civil Registration Systems and other Administrative sources. In Uganda, however, the Population and Housing Census remains the main source of demographic data, especially at the sub-national level.

Population Census taking in Uganda dates back to 1911 and since then the country has undertaken five such Censuses. The most recent, the National Population and Housing Census 2014, was undertaken under the theme 'Counting for Planning and Improved Service Delivery'. The enumeration for the 2014 Census was conducted in August/September 2014. The Uganda Bureau of Statistics (UBOS) worked closely with different Government Ministries, Departments and Agencies (MDAs) as well as Local Governments (LGs) to undertake the census exercise.

The 2014 Census provides several statistics on different aspects of the population. These include the population size and distribution which is a key indicator used for resource allocation, measurement of the extent of service delivery, decision making and budgeting among others. Other information includes the characteristics of the population, those of the dwellings they live in and information on the Household based Agricultural activities.

On behalf of the Bureau, I would like to appreciate the Government of Uganda for providing the necessary resources and infrastructure for undertaking the National Population and Housing Census (NPHC) 2014. In addition, the Bureau would like to thank the Development Partners, particularly United Kingdom Aid (UKAid), the United Nations Fund for Population Activities (UNFPA) and the United Nations Children's Fund (UNICEF) for providing technical and financial support towards the Census. The Bureau would also like to thank the Media for creating awareness about the Census 2014 and, most importantly, the individual households who voluntarily provided the required information.

Together We Count



Ben Paul Mungyereza
EXECUTIVE DIRECTOR

PREFACE

The Uganda Bureau of Statistics Act No. 12 of 1998 provides for the Minister responsible for Planning to direct ‘that a Census be taken’ on any matter specified in the Act. This was the legal basis for conducting the National Population and Housing Census (NPHC) 2014. The long-term objective of the NPHC 2014 is to ensure availability of bench-mark demographic and socio-economic data for use in planning, evidence based decision making, policy formulation and programme evaluation.

In order to support the planning process, the results from the Census 2014 are being released in phases as and when they become available. The Provisional Results Report was released in November, 2014 followed by the Final Results which were released in March 2016 and the Sub-county Reports in June 2016. These reports collectively provided information on the characteristics of the population and households at the national, district and sub-county levels.

The **Constituency Profiles Series** presents the characteristics of the population and household as well as the housing conditions of the population in each parliamentary constituency of the district. For convenience, however, the profiles of all constituencies in one district have been published in one report. In each report, the Appendix has selected national level tables for reference.

Uganda Bureau of Statistics (UBOS) is in the process of producing several other reports including the National Analytical Results (Monograph Series), District-level Analytical Reports and the Census Atlas. These will present detailed findings covering more indicators on different thematic areas. In addition to the above reports, the Bureau will be providing electronic datasets to facilitate deeper analysis of the data.

The Bureau, appeals to Policy Makers, Researchers and Academicians to make extensive use of this information for policy analysis and evidence-based decision-making at different levels of service delivery. Together we can harness information resources from the Census to improve service delivery and create a better Uganda.

ABOUT THE INDICATORS

Household

A group of persons who usually eat and live together. A household may be comprised of one or more persons provided they share the same meal and sleep under the same roof. The persons may be related usually in a family setting or may not be related.

Household population

All those persons who were enumerated in households. It excludes population which was enumerated on the streets (floating population) or those who were living in Institutions such as correction centres, religious institutions and health facility in-patients.

Population size

Refers to the total population count in the country or any geographical location based on the census reference night. It includes all those persons who were enumerated in households and institutions.

Population by age groups or specific age

This is the total count of the household population by a given age, age- groups or special age-groups. It excludes the non-household population.

Education characteristics/indicators

The indicators refer to specific age groups. The official school going age is 6-12 years for primary education, 13-18 years for secondary education and 19-24 years for tertiary education. However, the analysis includes the age-group 6-15 years to take into consideration those who start primary level at more than 6 years.

For those who have never been to school, we consider the age group 15 years and above on the assumption that by age 15, there are minimal chances for one joining school for the first time.

Illiteracy

This is defined as lack of the ability to read and write with understanding in any language. Persons aged 10 years and above who could not read and write responded (Codes 2, 3 and 4) to Question P21 of the Household Questionnaire. The objective of using this indicator is to shed light on the areas that need improvements in the delivery of the services.

Ownership of a birth certificate

Ownership includes all those persons (adults or children) who either had a Short Birth Certificate or a Long Birth Certificate during census enumeration. The analysis is based on specific age categories.

Parental survival and Orphanhood

Parental survival and orphanhood are derived variables which are based on two questions (P10 and P11), whether or not the biological mother/father of the respondent was still alive at the time of the census. Orphans are persons below the age of 18 who have lost any or both of their parents.

Disability

The questions P14 to P17 on functional difficulty are used to determine whether the person has a disability or not. It includes all persons aged 2 years and above. An individual is considered to be disabled if he/she has any one of the 4 questions with at least some difficulty.

Multiple disabilities refer to all persons who reported more than one functional difficulty.

Marriage and Child Bearing

Marital Status refers to all those persons who are living together and consider themselves as married. It includes all forms of consensual union whether legal or non-legal, religious or cultural or non-consensual union.

Employment

Questions on employment were eligible for all household population aged 10 years and above. Currently the age category for the working population 16 -64 years. The analysis is based on specific age groups of children 10-15 years, (other countries define a child as anyone below the age of 16, hence the age group 10-15 years).

Construction materials of the dwelling

The information is derived from the question on “materials used for the roof, floor and wall. Permanent floor materials include concrete, cement screed, tiles, wood, while permanent roof materials include roof tiles, iron sheets, asbestos and concrete.

Status of dwelling

The permanency nature of construction materials determines the status of the dwelling. The idea is to be able to classify a dwelling unit as temporary or permanent.

Access to community services

The choice of indicators is for those households that are beyond the 5 km radius for access to services (access to public/private schools, health facilities and a police station/post). The nearness of the service to the household does not take into consideration whether the services are utilized by the household or not.

Other environmental conditions – waste disposal

Any household was considered to have proper waste disposal if at the time of the census it disposed off solid waste using registered or unregistered waste vendors as well as using skip bins provided by the Municipal authority.

Owner occupied dwellings

These are disaggregated by household headship. The percentages for male and female headed households may not add up to 100. For instance among the female headed households, what proportion are owner occupied? Among the male headed households, what proportion are owner occupied?

Source of energy for lighting – electricity

In the household questionnaire, Question H14 had about four forms of electricity used for lighting (grid, generator, solar, community/thermal plant). Any household that indicated using any of the four forms was considered to have access to electricity.

Household based agricultural activities

A household engaged in agriculture is one which is engaged in any of the following:

Growing of any crops, or rearing animals or involved in bee keeping or forestry/tree growing, and any fish farming. Agricultural activities outside the district were not considered.

TABLE OF CONTENTS

FOREWORD	i
PREFACE.....	ii
ABOUT THE INDICATORS	iii
INTRODUCTION	1
1.1 General Information about Uganda	1
1.2 About the National Population and Housing Census 2014	1
1.3 National Highlights of the 2014 Census Results.....	2
AREA SPECIFIC PROFILES.....	18
BUSIA DISTRICT	19
BUSIA MUNICIPALITY CONSTITUENCY	28
SAMIA BUGWE COUNTY NORTH CONSTITUENCY	37
SAMIA BUGWE COUNTY SOUTH CONSTITUENCY.....	46
APPENDICES	55
Appendix 1: Population by Sex and Type of Residence by District, Uganda 2014	56
Appendix 2: The Household Questionnaire and codelist for the National Population and Housing Census 2014.....	59

LIST OF MAPS

- Map 1: Districts of Uganda as of 1st July 2016
- Map 2: Busia District Parliamentary Constituencies as of 1st July, 2016
- Map 3: Distribution of Population by Sub-county; Busia District, 2014
- Map 4: Percentage Distribution of Population Aged 6-12 Years Not in School; Busia District, 2014
- Map 5: Percentage Distribution of Youth Population aged 18-30 Years, Not in School and not working; Busia District, 2014
- Map 6: Percentage Distribution of Population aged 10-19 Years, Ever Married; Busia District, 2014
- Map 7: Percentage Distribution of Orphans aged 0-17 Years; Busia District, 2014
- Map 8: Percentage Distribution of Households within 5 Km and Over to the nearest Public Health Facility; Busia District, 2014
- Map 9: Percentage Distribution of Households without access to Safe Water; Busia District, 2014
- Map 10: Percentage Distribution of Households with no Toilet facility; Busia District, 2014
- Map 11: Percentage Distribution of Households having less than 2 meals a day; Busia District, 2014

INTRODUCTION

1.1 General Information about Uganda

Location and Size

Uganda is located in East Africa and lies across the equator, about 800 kilometres inland from the Indian Ocean. It lies between Latitude 1° 29' South and 4° 12' North of the Equator as well as Longitude 29° 34' East and 35° 0' East of Greenwich. The country is landlocked, bordered by Kenya in the East; South Sudan in the North; Democratic Republic of Congo in the West; Tanzania in the South; and Rwanda in South West. It has a total area of 241,551 square kilometres, of which the land area covers 200,523 square kilometres.

Administration

The country was divided into 116 districts (as at August/September 2014). The districts were further subdivided into 200 Counties, 1,378 Sub-counties and 6,495 Parishes. The role of these administrative units is to implement and monitor government programmes at the respective levels. Overtime, the administrative units have been sub-divided with the aim of easing administration and improving the delivery of services.

1.2 About the National Population and Housing Census 2014

The overall objective of the National Population and Housing Census (NPHC) 2014 was to provide data that are required for planning at all levels. The NPHC 2014 had three distinct phases namely, the Preparatory Phases, the Enumeration Phase and the Post Enumeration Phase.

The preparatory work for the Census 2014 started in 2008 with development of the overall strategy of undertaking the census. Other preparatory activities included development of the questionnaires, undertaking of the census mapping, conducting the Pilot Census, carrying out the census advocacy and publicity and other administrative support services.

The enumeration phase included recruitment and training of field staff, delivery of enumeration materials, conducting the main census enumeration and retrieval of materials. The census activities in the district were conducted under the overall responsibility of the Chief Administrative Officers (CAOs) or the Executive Director in the case of Kampala Capital City Authority (KCCA). All field staff underwent mandatory ten (10) day training on Census concepts and procedures.

The Census Reference Night was the night of 27th August 2014 and the enumeration was conducted on a de facto basis. The enumeration started on 28th August and continued to 7th September 2014. The Enumerators moved from household to household within the assigned Enumeration Areas (EAs) and administered the Census questionnaire to the Head of household or any other assigned household member through face to face interviews.

The data processing was centrally managed at the Bureau offices. The filled questionnaires were captured with scanning technology and the information extracted using automatic character recognition.

Data quality assurance enhances credibility, usability and utility of data. The Post Enumeration Survey (PES) was used as one of the tools to evaluate the quality of the census data through testing the completeness of coverage and accuracy. The PES enumeration was undertaken in October/November 2014, and it covered 800 EAs distributed in all the districts and Kampala Capital City Authority (KCCA).

1.3 National Highlights of the 2014 Census Results

The results of the NPHC 2014 will be published in phases. The Provisional Census Results were disseminated in November 2014. These gave the number of households and the population by sex for administrative areas down to sub-county level. The first set of the final results of the Census 2014 were published in the Main Report which was released in March 2016. The report includes information on the population size and distribution as well as characteristics of the population and the dwellings they live in. The results showed that the total population of Uganda in 2014 was 34.6 million persons as shown in Table 1.

Between 2002 and 2014, the population increased from 24.2 million to 34.6million. This implied average growth rate of 3.0 percent per annum.

Table 1: Population size and Population Growth Rates, Uganda, 1969-2014

Census year	Male	Female	Total	Inter-censal Period	Average Annual Growth Rate (%)
1969	4,812,447	4,722,604	9,535,051		
1980	6,259,837	6,376,342	12,636,179	1969-1980	2.7
1991	8,185,747	8,485,558	16,671,705	1980-1991	2.5
2002	11,824,273	12,403,024	24,227,297	1991-2002	3.2
2014	17,060,832	17,573,818	34,634,650	2002-2014	3.0

The distribution of the population among the districts is given in Appendix Table 1. Wakiso district had a population of nearly two (2) million, accounting for about six percent of the total population, while some districts were less populous, Kalangala district being the smallest with a population of 53,406 persons. As of 2016, Uganda had a total of 259 urban centres with a total urban population of 7.5 million persons. Thus, 20.2 percent of the total population lived in urban areas. Kampala Capital City was the most populous urban centre with 1.5 million persons.

Table 2 gives the distribution of the population by age. The Table shows that the population of Uganda is quite young, with the proportion of children (below 15 years of age) being 47.9 percent, while the 'Older persons' (aged 60 years and above) constituted only 2.9 percent.

Table 2: Population Distribution by Age, Sex, Residence, and Population Type, Uganda, 2014

Age	Sex		Residence		Population Type		Total
	Male	Female	Rural	Urban	Household	Institutional	
0-4	3,173,950	2,957,078	4,950,513	1,180,515	6,107,155	23,873	6,131,028
5-9	2,834,456	2,717,222	4,557,328	994,350	5,532,230	19,448	5,551,678
10-14	2,462,789	2,457,654	4,024,478	895,965	4,850,926	69,517	4,920,443
15-19	1,917,797	2,038,836	3,052,854	903,779	3,850,134	106,499	3,956,633
20-24	1,442,455	1,743,137	2,263,734	921,858	3,093,846	91,746	3,185,592
25-29	1,143,467	1,342,709	1,743,019	743,157	2,434,180	51,996	2,486,176
30-34	908,447	1,043,292	1,429,283	522,456	1,914,351	37,388	1,951,739
35-39	726,355	809,482	1,148,883	386,954	1,512,237	23,600	1,535,837
40-44	617,034	655,383	991,874	280,543	1,252,338	20,079	1,272,417
45-49	452,081	469,043	728,958	192,166	909,783	11,341	921,124
50-54	371,126	436,977	657,004	151,099	797,368	10,735	808,103
55-59	224,765	255,519	394,952	85,332	475,744	4,540	480,284
60-64	195,283	244,770	369,504	70,549	434,218	5,835	440,053
65-69	136,107	165,043	257,208	43,942	299,351	1,799	301,150
70-74	115,862	161,374	237,097	40,139	273,582	3,654	277,236
75-79	69,095	81,378	128,636	21,837	149,567	906	150,473
80-84	51,871	79,398	110,736	20,533	127,984	3,285	131,269
85-89	21,572	30,204	43,246	8,530	50,735	1,041	51,776
90-94	15,125	22,046	29,989	7,182	34,339	2,832	37,171
95 and above	18,212	26,256	37,186	7,282	41,231	3,237	44,468
Total	16,897,849	17,736,801	27,156,482	7,478,168	34,141,299	493,351	34,634,650

Characteristics of the Population

About 87 percent of the boys and girls of primary school going age (6-12 years) were attending school, while about 1 in every 10 children of primary school going age children had never been school. The Illiteracy status Rate was 72 percent among persons aged 10 years and above. Out of the 17.7 million persons of working age (aged 14 to 64 years), 13.8 million (78 percent) were working in the (Labour Force), with the most common occupation being subsistence farming (65%).

Vulnerability can be assessed at personal and household level. At personal level, vulnerability is a state of being in which a person is likely to be in a risky situation, suffering significant physical, emotional, or mental harm that may result in his/her human rights not being fulfilled (MoGLSD, 2004). The 2014 Census measured some of the dimensions of Child Vulnerability. The results show high levels of vulnerability as highlighted below;

- One in every eight (12.5%) of children aged 6 – 12 Years were not in school;
- Two out of every 25 (8%) children less than 18 years of age were orphaned;
- One in every 16 (6%) of the girls aged 12 to 17 years had already given birth;
- One in every 15 (6.5%) of the girls aged 12 – 17 had ever been in a marriage union;
- Seven out of every 10 Children (70%) aged less than five years did not have a Birth certificate.

There was a general improvement in the demographics of the population with the Total Fertility Rate falling to 5.8 children per woman while the infant Mortality Rate decreased to 53 deaths per 1,000 live births. The Life Expectancy at Birth also increased to 63.3 years

Characteristics of the Households

The household population consisted of (99 percent of the total population.) The Census 2014 enumerated a total of 7.3 million households with a population of 34.1 million .This gave an Average Household Size of 4.7.

The ‘Tadooba’ remained the most common source of lighting being used by 52 percent of the households. Only one in every five households (20%) had access to electricity. On the other hand, Wood fuel was the most common fuel used for cooking, with only six percent (one in every 16) of the households using other fuels. Sanitation remains a challenge with only thirty percent of the households with unimproved toilet facilities. About 600,000 households did not have any toilet facility at all.

The majority of the households (69 percent) derived their livelihood from subsistence farming. Only 27% of the households depended on earned income. One in every nine households (11%) were having only one meal per day (for adults). Some of the households (11%) received remittances from abroad in cash or in kind. More than two thirds of the households (69%) had at

least one member owning a Mobile phone. Ownership of a Mobile among persons aged 10 years and above was at 38 percent. The radio remains a dominant source of information and about 60 percent of the households owned a radio.

Housing Conditions

The housing sector recorded a general improvement. Overall, 67 percent of households in Uganda resided in detached dwellings. However, nearly half (47%) households resided in dwellings with only one room for sleeping. There was also significant improvement in the materials used for construction of the dwellings. About 44% of the households resided in dwellings constructed with permanent wall material. The equivalent shares for roof and floor were 70 and 34 percent respectively.

Agricultural Activities

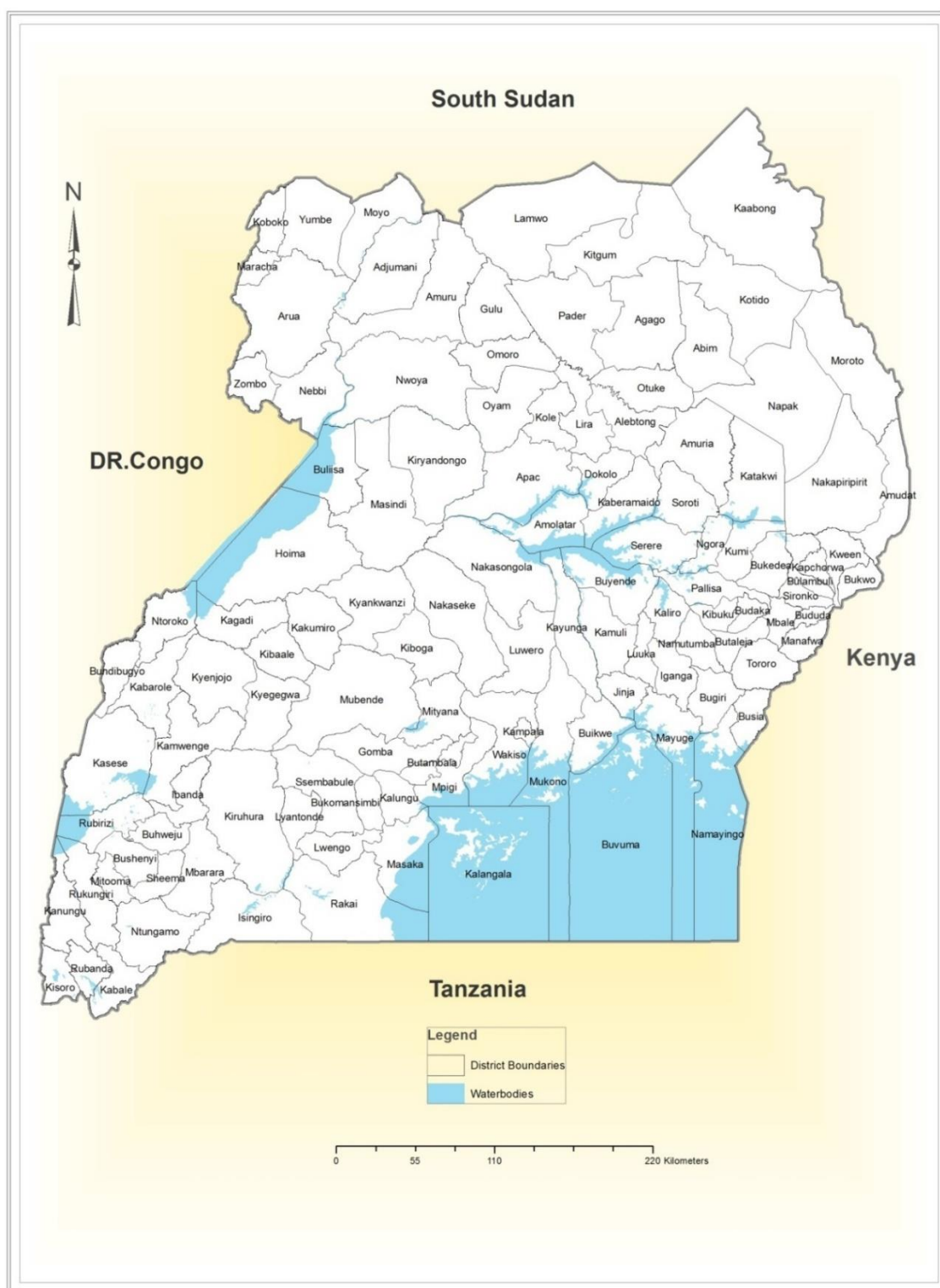
Agriculture has remained a dominant sector in the economy. The Census revealed that a total of 5.8 million households engage in agriculture. More than two thirds (69 percent) of households derived their livelihoods from subsistence farming as the main source of earning. In terms of employment, the majority of the working population (65 percent) were subsistence farmers.

POPULATION SIZE

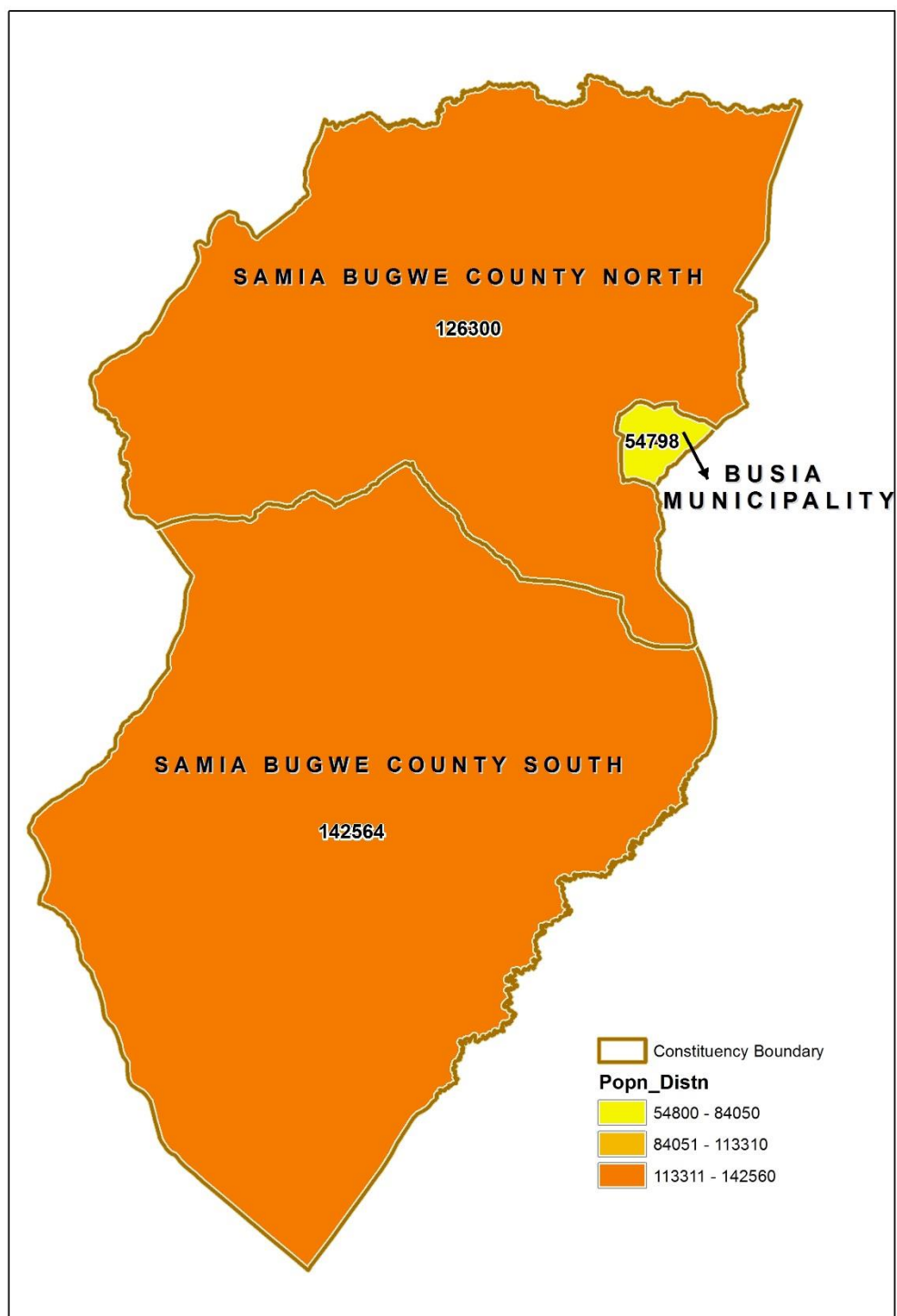
Table 3: Total population by age group and sex, Busia District, 2014

	Male	Female	Total
Age Group			
0-9	57,927	55,010	112,937
10-19	43,003	44,409	87,412
20-39	35,343	43,645	78,988
40-59	14,440	16,430	30,870
60+	5,734	7,721	13,455
District	156,447	167,215	323,662

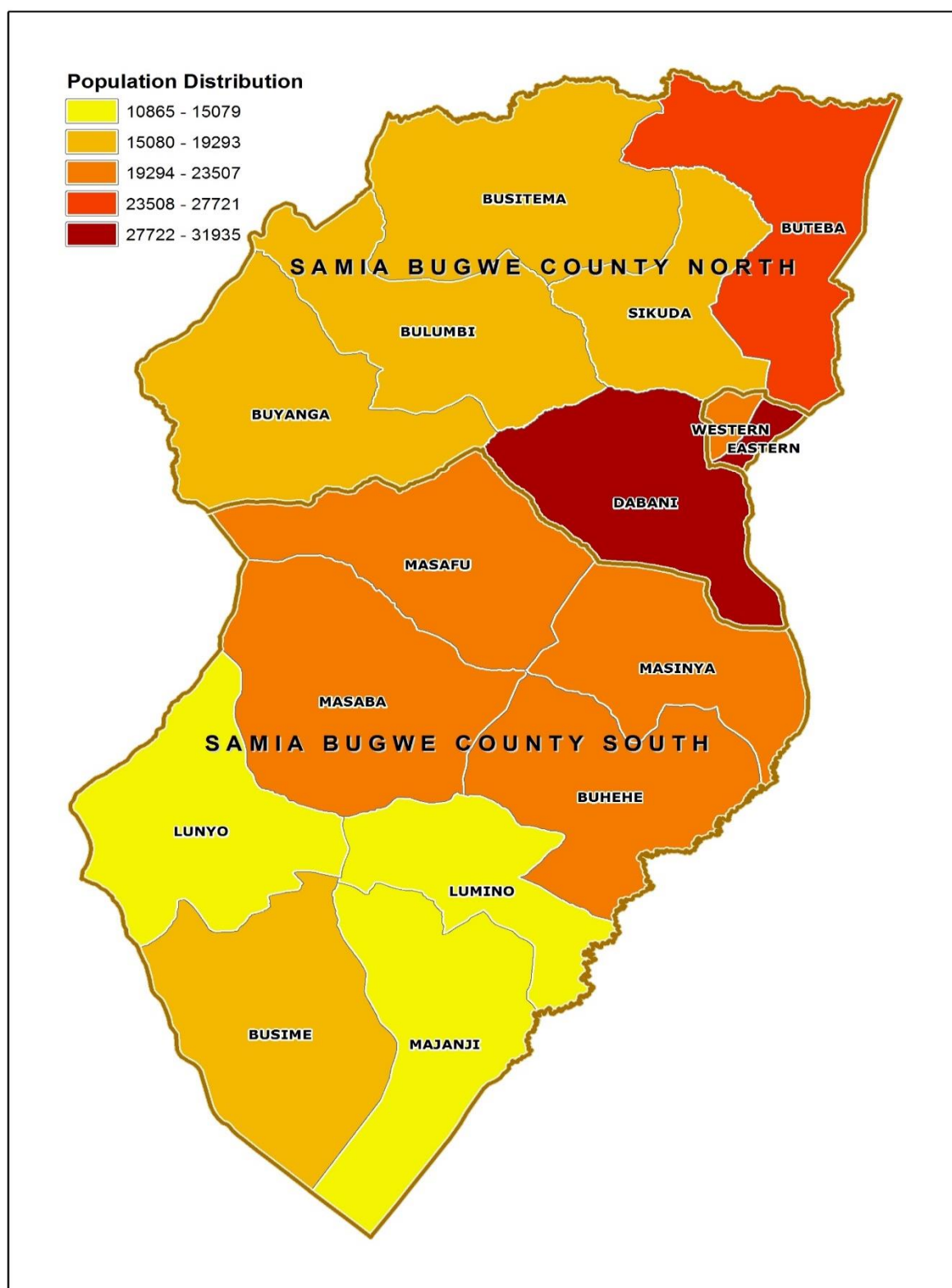
Map 1: Districts of Uganda as of 1st July 2016



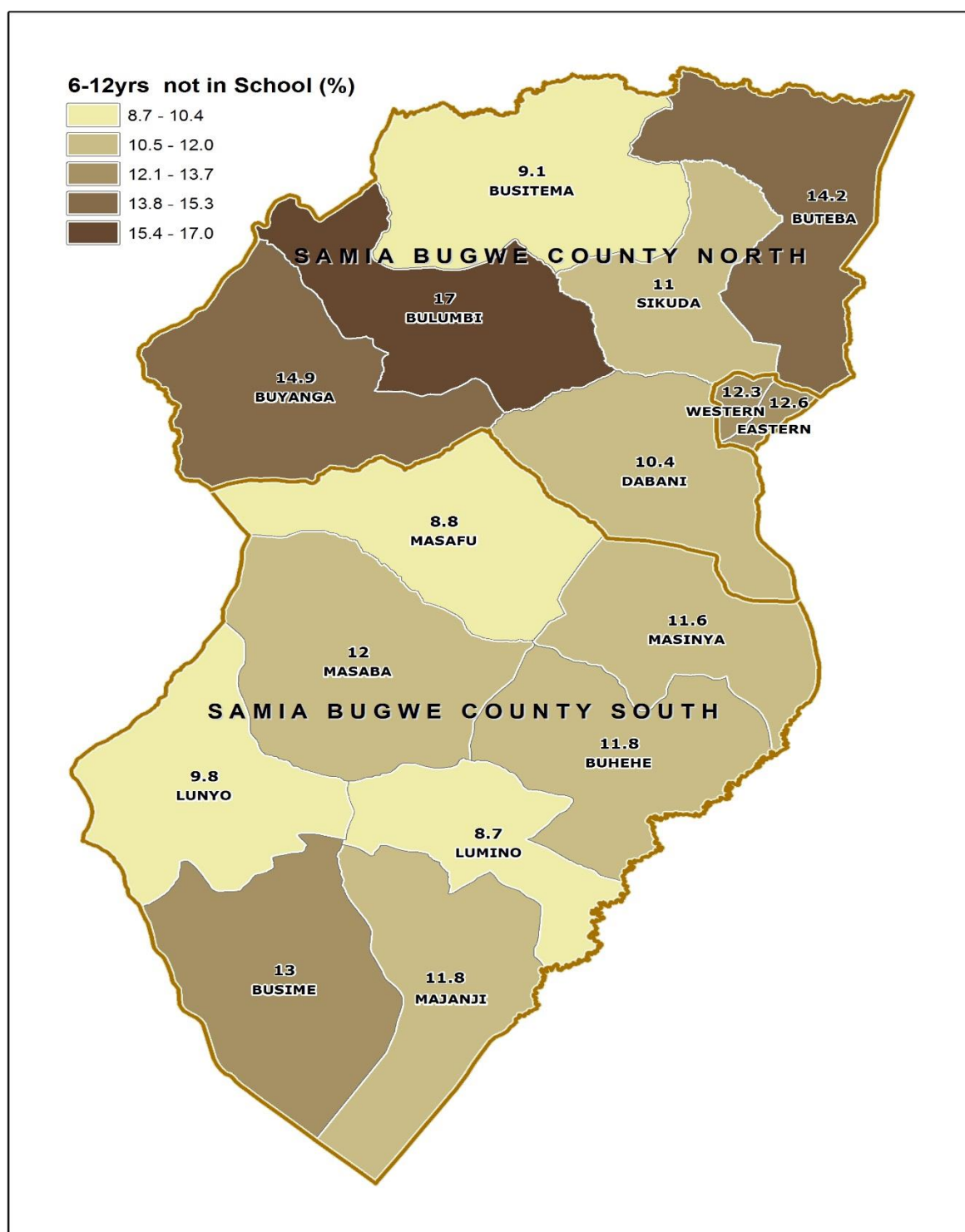
Map 2: Busia District showing parliamentary Constituencies as of 1st July, 2016



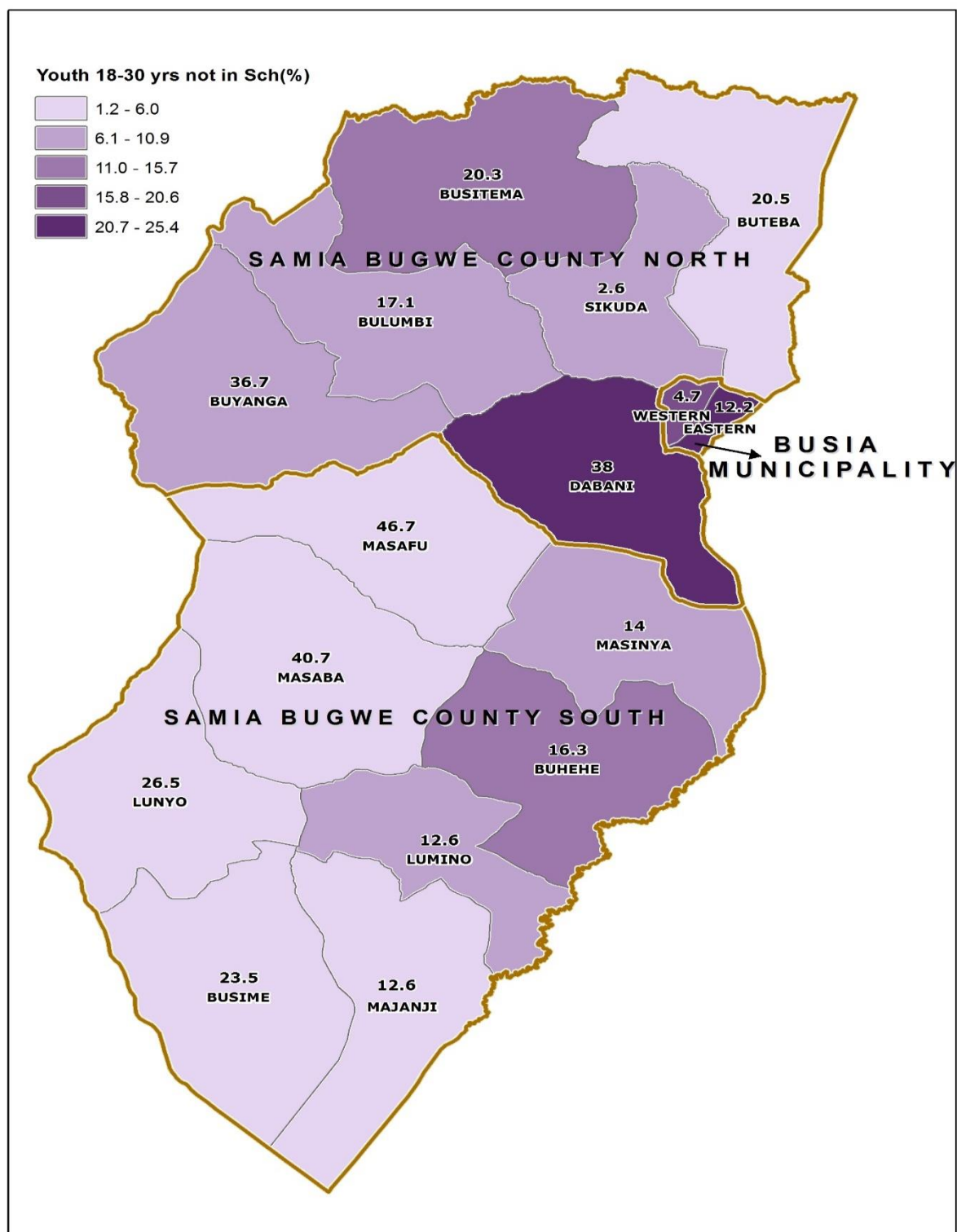
Map 3: Distribution of Population by Sub-county, Busia District, 2014



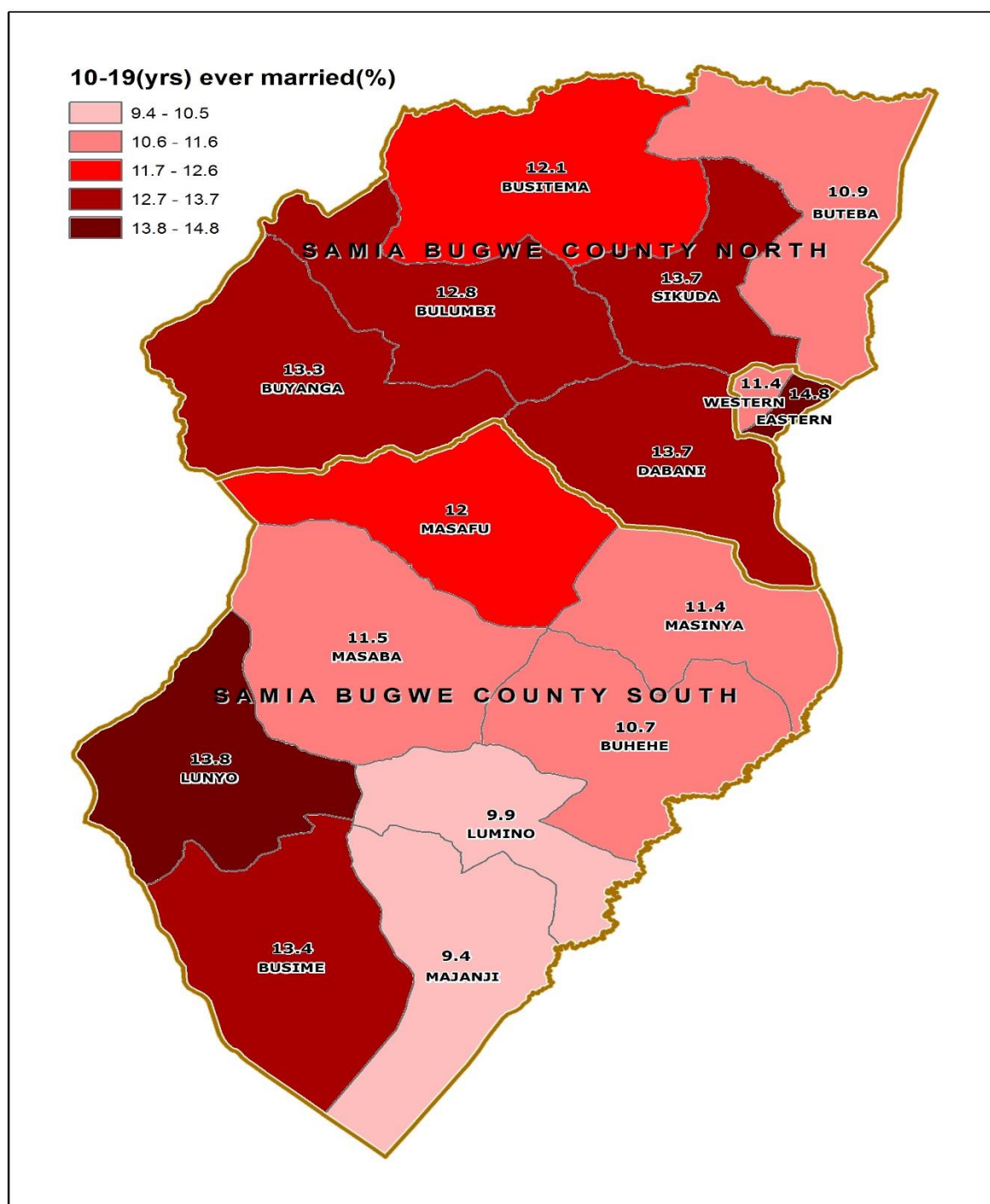
Map 4: Percentage Distribution of Population Aged 6-12 Years Not in School; Busia District, 2014



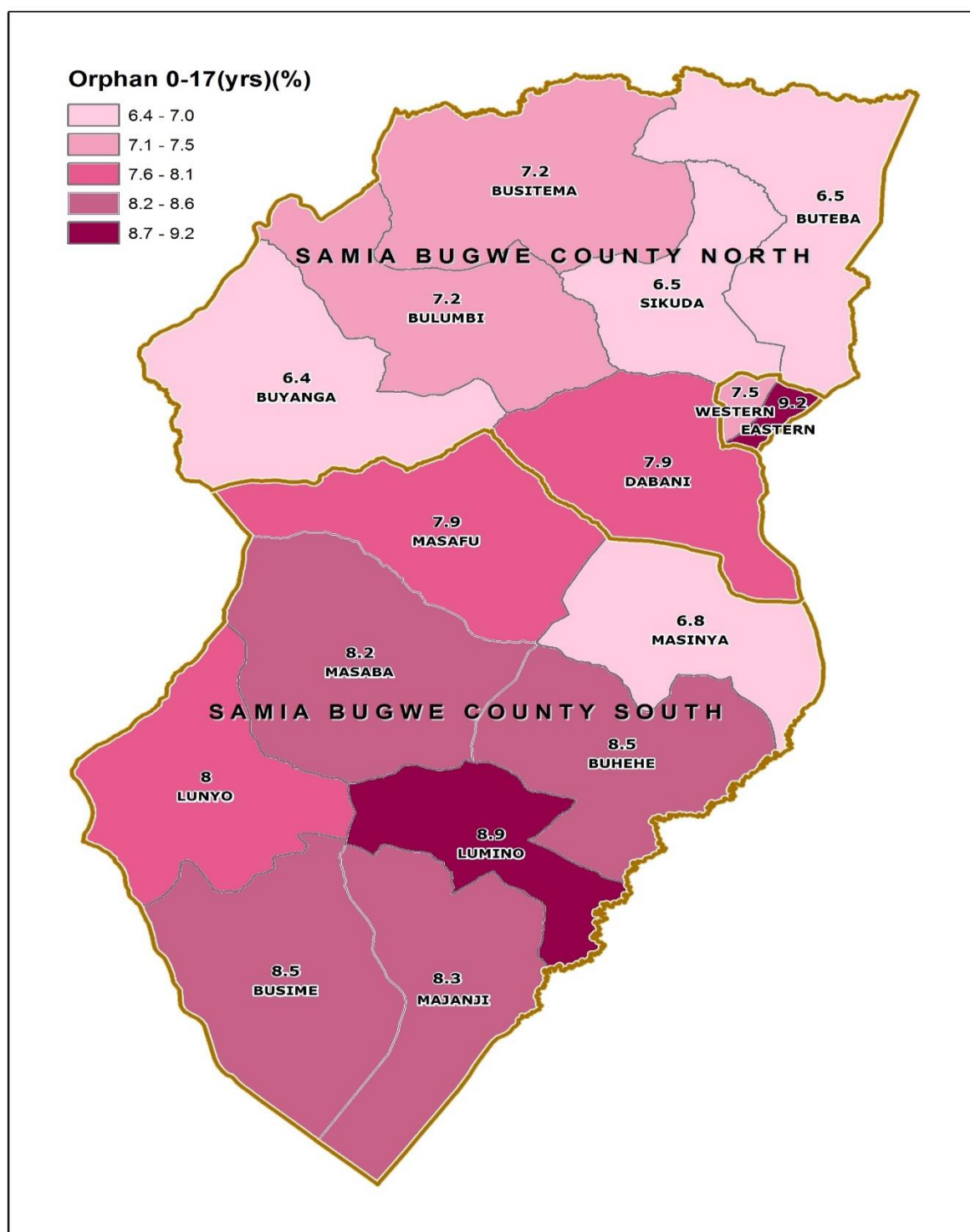
Map 5: Percentage Distribution of Youth Population aged 18-30 Years, Not in School and Not Working; Busia District, 2014



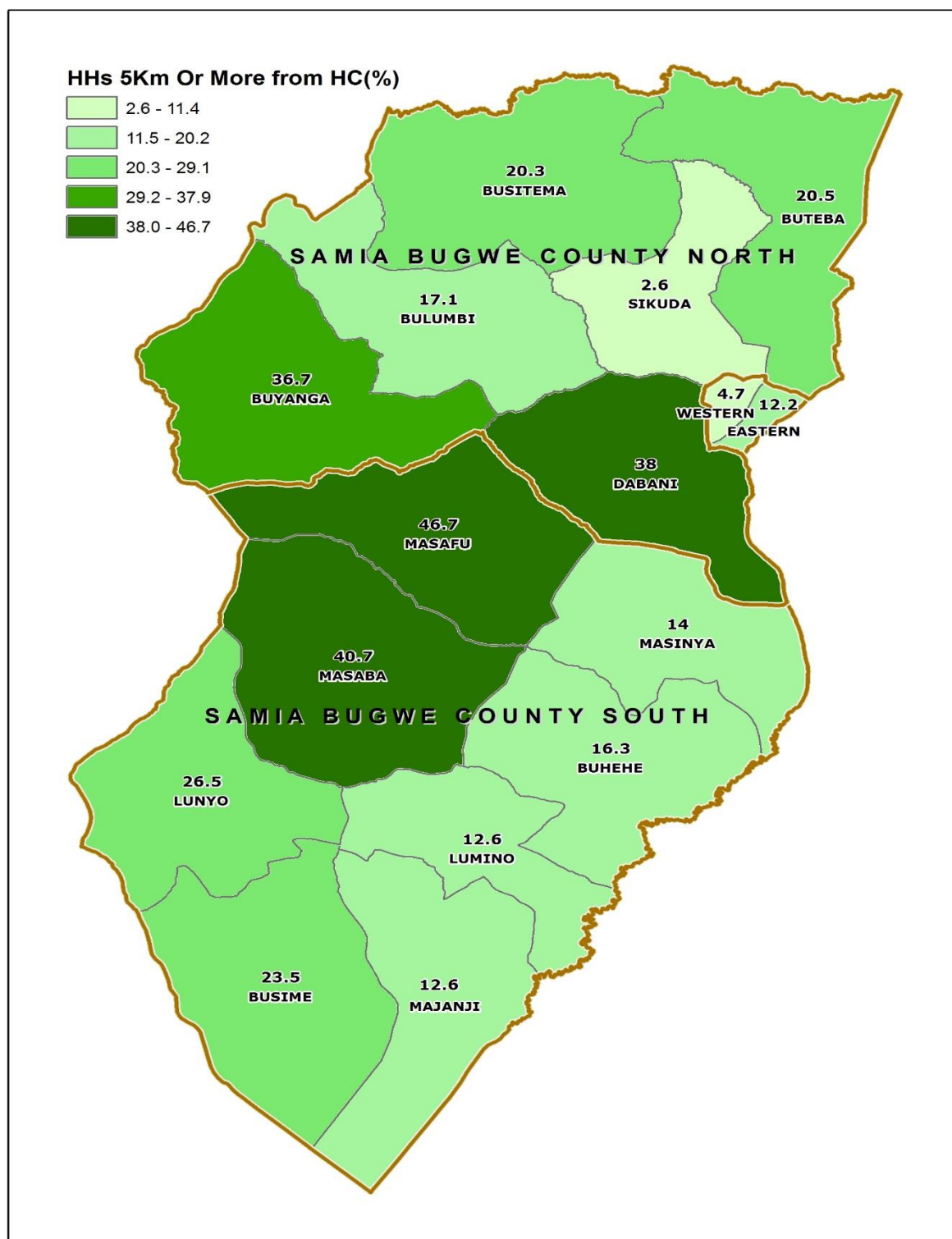
Map 6: Percentage Distribution of Population aged 10-19 Years, Ever Married; Busia District, 2014



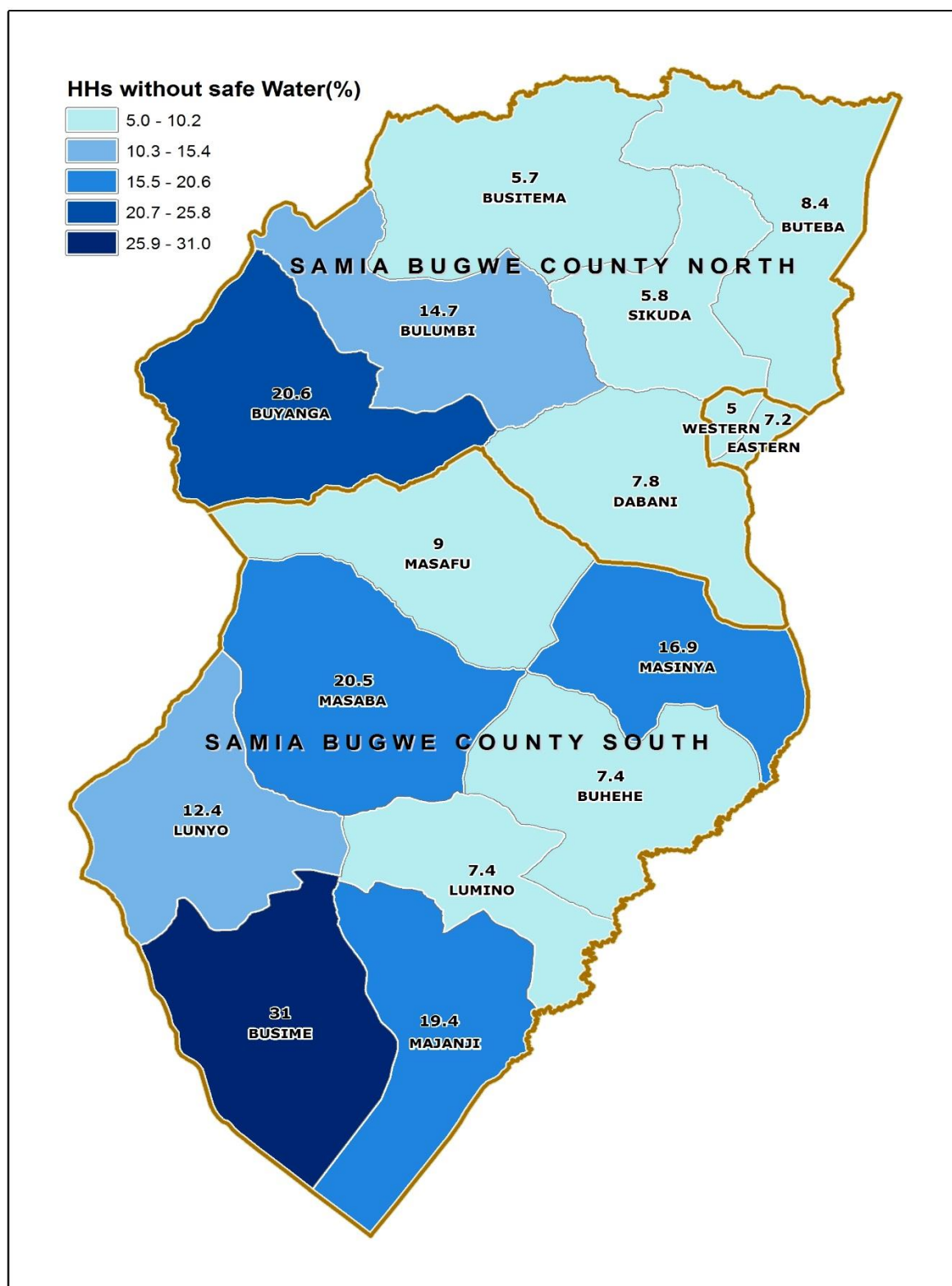
Map 7: Percentage Distribution of Orphans aged 0-17 Years; Busia District, 2014



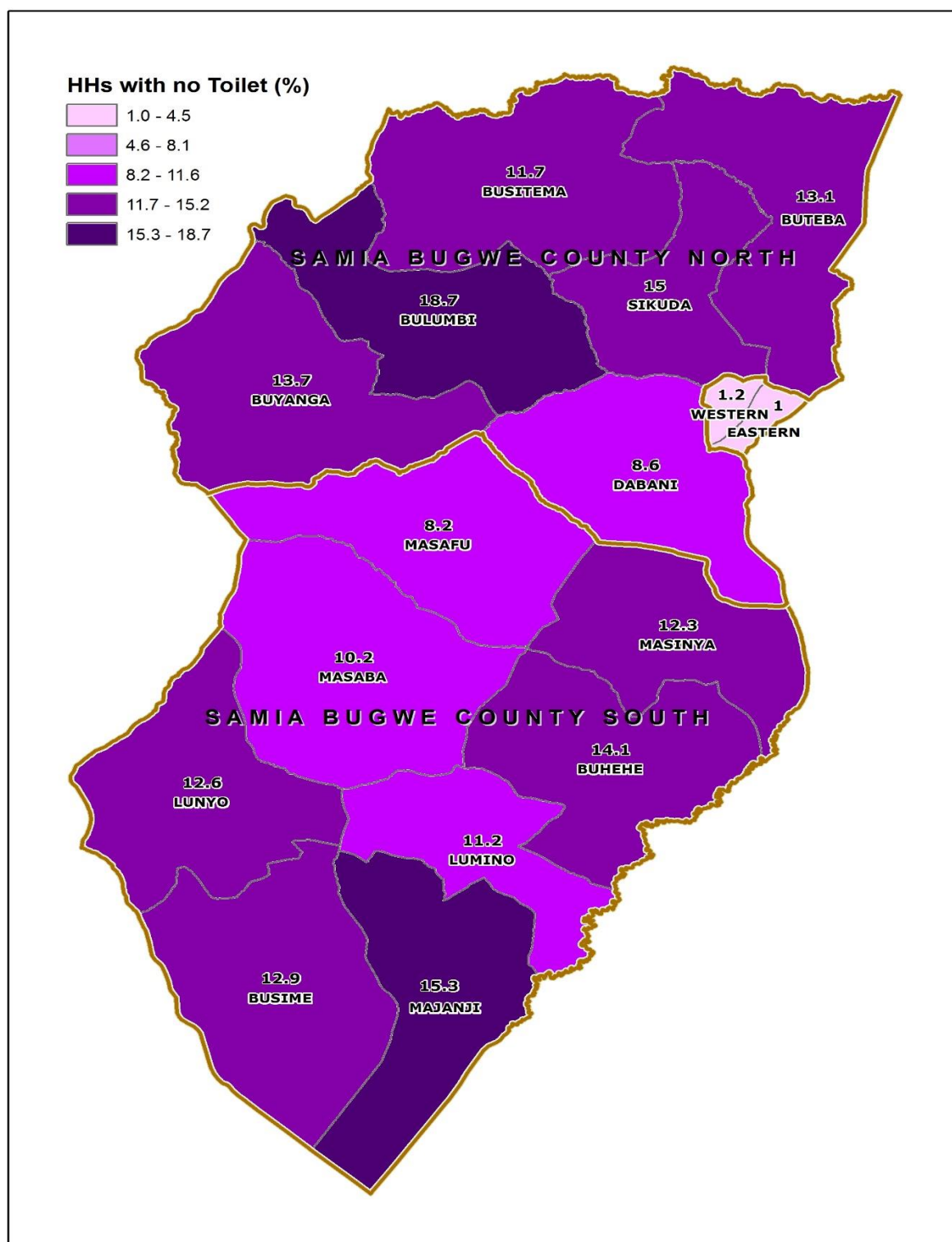
Map 8: Percentage Distribution of Households 5 Km and over to the nearest Public Health Facility; Busia District, 2014



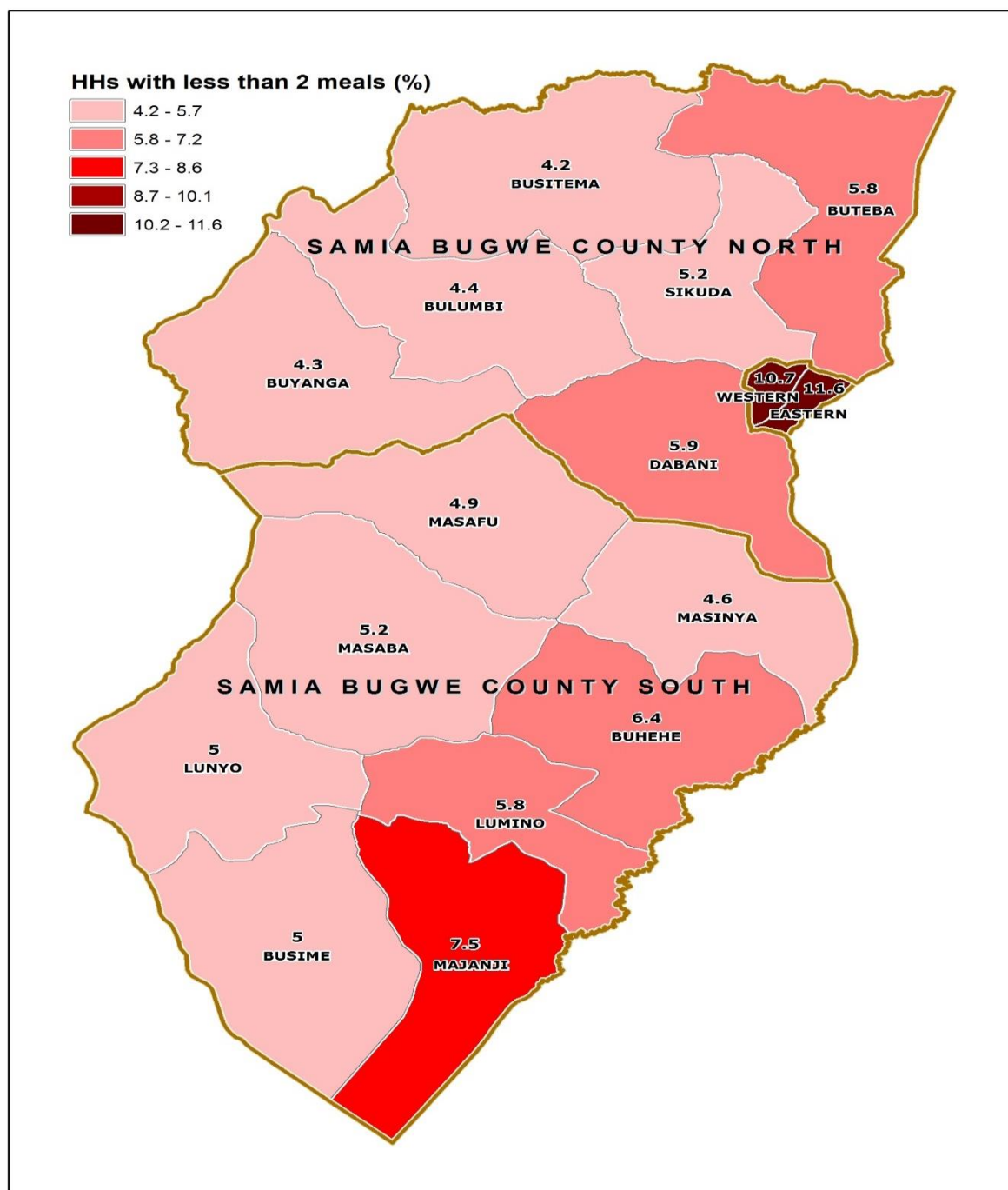
Map 9: Percentage Distribution of Households without access to Safe Water; Busia District, 2014



Map 10: Percentage Distribution of Households with No Toilet facility; Busia District, 2014



Map 11: Percentage Distribution of Households having less than 2 meals a day; Busia District, 2014



AREA SPECIFIC PROFILES

BUSIA DISTRICT

LIST OF TABLES

- 1 Population
- 2 Education
- 3 Illiteracy status
- 4 Ownership of a Birth Certificate
- 5 Parental Survival and Orphanhood
- 6 Disability
- 7 Marriage and Child Bearing
- 8 Working Status
- 9 Use of ICT
- 10 Housing Conditions
- 11 Access to Community Services
- 12 Household Health and Hygiene
- 13 Household Assets
- 14 Other Household Characteristics
- 15 Household Based Agricultural Activities

1: POPULATION

1.1: Population Size	Number	Percent
Total population	323,662	
Total male population	156,447	48.3
Total female population	167,215	51.7
Sex ratio (males per 100 females)	93.6	
1.2: Households	Number	Percent
Total households	64,769	
Households headed by males	50,154	77.4
Households headed by females	15,703	22.6
Households headed by children (aged 10-17 years)	239	0.4
Households headed by youth (aged 18-30 years)	15,703	24.2
Households headed by older persons (aged 60 years and above)	10,772	16.6
1.3: Population by Age groups	Number	Percent
Population aged 0-17 years	184,493	57.6
Population aged 18-30 years	66,202	20.7
Population aged 31-59 years	56,465	17.6
Population aged 60 years and over	13,356	4.2
1.4: Population by Special Age groups	Number	Percent
Population aged Less than one Year	12,280	3.8
Population aged 0-4 Years	58,812	18.3
Population aged 0-8 Years	102,816	32.1
Population aged 2-8 Years	79,120	24.7
Population aged 2-17 Years	160,797	50.2
Population aged 6-12 Years	72,417	22.6
Population aged 6-15 Years	99,217	31.0
Population aged 10-15 Years	56,173	17.5
Population aged 10-17 Years	71,739	22.4
Population aged 15-24 Years	64,893	20.2
Population aged 16-64 Years	142,295	44.4
Population aged 15-29 Years	85,099	26.6
Population aged 2 Years and Over	296,820	92.6
Population aged 10 Years and Over	207,762	64.8
Population aged 15 Years and Over	159,530	49.8
Population aged 18 Years and Over	136,023	42.4
Population aged 20 Years and Over	121,756	38.0
Population aged 65 Years and over	9,294	2.9

2: EDUCATION

2.1: Non School attendance of	Number	Percent
Persons aged 6-15 years not attending school	6,911	7.0
Males aged 6-15 years not attending school	3,541	7.1
Females aged 6-15 years not attending school	3,370	6.8
2.2: Persons attending Primary school	Number	Percent
Persons aged 6-12 years attending primary school	64,078	88.5
Males aged 6-12 years attending primary school	32,215	87.9
Females aged 6-12 years attending primary school	31,863	89.1
2.3: Persons attending Secondary school	Number	Percent
Persons aged 13-18 years attending secondary school	16,921	33.8
Males aged 13-18 years attending secondary school	8,970	36.6
Females aged 13-18 years attending secondary school	7,951	31.1
2.4: Persons not in School and Highest Level Completed is below S.4	Number	Percent
Persons aged 15 years and above whose highest level of education completed is below S.4	89,189	81.5
Males aged 15 years and above whose highest level of education completed is below S.4	38,032	75.5
Females aged 15 years and above whose highest level of education completed is below S.4	51,157	86.7
2.5: Persons not in School and Highest Level Completed is "O" Level	Number	Percent
Persons aged 18 years and above whose highest level of education completed is "O" level (S.4)	11,151	8.2
Males aged 18 years and above whose highest level of education completed is "O" level (S.4)	6,571	10.8
Females aged 18 years and above whose highest level of education completed is "O" level (S.4)	4,580	6.1
2.6: Persons not in School and Highest Level Completed is "A" Level	Number	Percent
Persons aged 20 years and above whose highest level of education completed is "A" level (S.6)	2,600	2.1
Males aged 20 years and above whose highest level of education completed is "A" level (S.6)	1,845	3.4
Females aged 20 years and above whose highest level of education completed is "A" level (S.6)	755	1.1

3: ILLITERACY STATUS

3.1: Persons aged 18 years and above	Number	Percent
Persons aged 18 years and above who are illiterate	43,942	32.3
Males aged 18 years and above who are illiterate	13,580	22.3
Females aged 18 years and above who are illiterate	30,362	40.4
3.2: Other age groups	Number	Percent
Persons aged 10-17 years who are illiterate	17,412	24.3
Persons aged 18-30 years who are illiterate	13,440	20.3
Persons aged 60 years and above who are illiterate	8,712	65.2

4: OWNERSHIP OF A BIRTH CERTIFICATE

4.1: Children with Birth Certificates	Number	Percent
Children less than 1 year who have a Birth Certificate	2,647	21.6
Children less than 5 years who have a Birth Certificate	14,673	24.9
Children 0-8 years who have a Birth Certificate	26,819	26.1
Children 0-17 years who have a Birth Certificate	52,313	29.5

5: PARENTAL SURVIVAL AND ORPHANHOOD

5.1: Children 0-8 years	Number	Percent
Children 0-8 years who have lost one parent	3,438	3.3
Children 0-8 years who have lost both parents	244	0.2
Children 0-8 years who have lost at least a parent (total number of orphans)	3,682	3.6
Children 0-8 years who have both parents	99,134	96.4
5.2: All children (0-17 years)	Number	Percent
Children 0-17 years who have lost one parent	12,710	6.9
Children 0-17 years who have lost both parents	1,524	0.8
Children 0-17 years who have lost at least a parent (total number of orphans)	14,234	7.7
Children 0-17 years who have both parents	170,259	92.3

6: DISABILITY

6.1: Persons with a disability	Number	Percent
Persons aged 2 years and above with a disability	32,211	10.9
Persons aged 2 years and above with a seeing disability	16,450	5.5
Persons aged 2 years and above with a hearing disability	8,591	2.9
Persons aged 2 years and above with a walking disability	11,361	3.8
Persons aged 2 years and above with a remembering disability	11,982	4.0
Persons aged 2 years and above with multiple disabilities	9,215	29.6
Children aged 2-17 years with a disability	7,766	4.8
Youth aged 18-30 years with a disability	5,069	7.7
Older persons aged 60 years and above with a disability	7,576	56.7

7: MARRIAGE AND CHILDBEARING

7.1: Marital status of the population	Number	Percent
Persons aged 10 years and above who are married	52,962	47.7
Persons aged 18 years and above who are married	51,112	68.1
Females aged 50 years and above who are widowed	6,312	44.0
Females aged 10-17 years who have ever been married	2,002	5.6
Females aged 10-19 years who have ever been married	5,390	12.3

7.2: Females who have had a birth	Number	Percent
Females aged 12-17 years who have given birth	2,026	7.7
Females aged 12-19 years who have given birth	5,340	15.7

8: WORKING STATUS

8.1: Working persons	Number	Percent
Persons aged 10-15 years who were working	18,094	32.2
Persons aged 10-17 years who were working	24,919	34.7
Persons aged 18-30 years who were working	48,837	73.8
Persons aged 16-64 years who were working	110,974	78.0
Persons aged 18 years and above who were working	110,351	81.1
Persons aged 60 years and above who were working	9,762	73.1

8.2: Youths Not working and not in school		
Youths (Persons aged 18-30 years) who were neither working nor in school	6,874	10.4

9: USE OF ICT

9.1: Mobile phone ownership (10 years and above)	Number	Percent
Persons aged 10 years and above that own at least one mobile phone	74,577	35.9
Males aged 10 years and above that own at least one mobile phone	41,387	42.8
Females aged 10 years and above that own at least one mobile phone	33,190	29.9
9.2: Mobile phone ownership (18-30 years)	Number	Percent
Persons aged 18-30 years and above that own at least one mobile phone	33,561	50.7
Males aged 18-30 years and above that own at least one mobile phone	17,940	61.3
Females aged 18-30 years and above that own at least one mobile phone	15,621	42.3
9.3: Internet Usage (10 years and above)	Number	Percent
Persons aged 10 years and above that use internet	12,579	6.1
Males aged 10 years and above that use internet	8,463	8.8
Females aged 10 years and above that use internet	4,116	3.7
9.4: Internet Usage (18-30 years)	Number	Percent
Persons aged 18-30 years that use internet	7,258	11.0
Males aged 18-30 years that use internet	4,778	16.3
Females aged 18-30 years that use internet	2,480	6.7

10: HOUSING CONDITIONS

10.1: Construction Materials For the Dwelling Units	Number	Percent
Households living in dwelling units constructed using permanent roof materials	36,374	56.2
Households living in dwelling units constructed using permanent wall materials	23,299	36.0
Households living in dwelling units constructed using permanent floor materials	23,308	36.0
10.2: Status of Dwelling Units	Number	Percent
Households living in semi-permanent dwelling units	17,511	27.0
Households living in temporary dwelling units	26,993	41.7

11: ACCESS TO COMMUNITY SERVICES

11.1: Access to a Primary school	Number	Percent
Households that are 5 km or more to the nearest primary school, <u>whether public or private</u>	2,613	4.0
Households that are 5 km or more to the nearest <u>public</u> primary school	4,356	6.7
11.2: Access to a Secondary school	Number	Percent
Households that are 5 km or more to the nearest secondary school, whether public or private	13973	21.6
Households that are 5 km or more to the nearest public secondary school	21968	33.9
11.3: Access to a Health Facility	Number	Percent
Households that are 5 km or more to the nearest health facility, <u>whether public or private</u>	10,165	15.7
Households that are 5 km or more to the nearest <u>public</u> health facility	13,871	21.4
11.4: Access to a Police post /Police station	Number	Percent
Households that are 5 km or more to the nearest Police Post/Police Station	15,866	24.5

12: HOUSEHOLD HEALTH AND HYGIENE

12.1: Ownership of Mosquito nets	Number	Percent
Households that own at least a mosquito net	60,502	93.4
Households that own at least a mosquito net that was received free (Government /NGO)	56,869	94.0
12.2: Source Of Water For Drinking	Number	Percent
Households that have access to piped water	8,444	13.0
Households that use a bore hole	32,573	50.3
12.3: Ownership of a Toilet facility	Number	Percent
Households without any toilet facility	5,891	9.1
12.4: Other environmental conditions	Number	Percent
Households that <u>properly</u> dispose of solid waste	29,681	45.8
Households which are not living in decent dwellings	63,483	98.0

13: HOUSEHOLD ASSETS

13.1: Owner occupied Dwellings	Number	Percent
Households that are owner occupied	50,055	77.3
Male headed households that are owner occupied	39,425	78.6
Female headed households that are owner occupied	10,630	72.7
13.2: Movable Assets	Number	Percent
Households that own a television	7,610	11.7
Households that own a computer	1,308	2.0
Households that own a bicycle	31,132	48.1
Households that own a radio	35,277	54.5

14: OTHER HOUSEHOLD CHARACTERISTICS

14.1: Main source of information	Number	Percent
Households whose main source of information is a radio	32,824	50.6
Households whose main source of information is a community announcer	1,814	2.8
Households whose main source of information is a telephone	3,169	4.9
14.2: Household Economy and Welfare	Number	Percent
Households that received remittances from abroad in the last 12 months	9,172	14.2
Households where any member possesses a bank account	11,043	17.0
Households that depend on subsistence farming as a main source of livelihood	42,752	66.0
Households with at least one member engaged in a non-agricultural household based enterprise	46,612	90.9
Households where (members aged 5 years and above) consume less than two meals in a day	4,222	6.5
14.3: Source of Energy for lighting	Number	Percent
Households that have access to electricity	7,961	12.3
Households that use Tadooba for lighting	45,456	70.1

15: HOUSEHOLD BASED AGRICULTURAL ACTIVITIES

15.1: Household based Agricultural activities	Number	Percent
Households engaged in crop growing	48,751	75.3
Households engaged in maize growing	46,383	71.6
Households engaged in coffee growing	365	0.6
Households engaged in growing of beans	21,124	32.6
Households engaged in growing of millet	3,583	5.5
Households engaged in growing of sweet potatoes	10,713	16.5
Households engaged in growing of matooke	3,186	4.9
Households engaged livestock farming	38,643	59.7
Households engaged in either crop growing or livestock farming	51,427	79.4

BUSIA MUNICIPALITY CONSTITUENCY

LIST OF TABLES

- 1 Population
- 2 Education
- 3 Illiteracy status
- 4 Ownership of a Birth Certificate
- 5 Parental Survival and Orphanhood
- 6 Disability
- 7 Marriage and Child Bearing
- 8 Working Status
- 9 Use of ICT
- 10 Housing Conditions
- 11 Access to Community Services
- 12 Household Health and Hygiene
- 13 Household Assets
- 14 Other Household Characteristics
- 15 Household Based Agricultural Activities

1: POPULATION

1.1: Population Size	Number	Percent
Total population	54,798	
Total male population	25,474	46.49
Total female population	29,324	53.51
Sex ratio (males per 100 females)	86.9	
1.2: Households	Number	Percent
Total households	13,474	
Households headed by males	9,875	73.3
Households headed by females	3,599	26.7
Households headed by children (aged 10-17 years)	119	0.9
Households headed by youth (aged 18-30 years)	5,088	37.8
Households headed by older persons (aged 60 years and above)	714	5.3
1.3: Population by Age groups	Number	Percent
Population aged 0-17 years	28,669	53.0
Population aged 18-30 years	14,811	27.4
Population aged 31-59 years	9,805	18.1
Population aged 60 years and over	843	1.6
1.4: Population by Special Age groups	Number	Percent
Population aged Less than one Year	2,152	4.0
Population aged 0-4 Years	9,640	17.8
Population aged 0-8 Years	16,371	30.2
Population aged 2-8 Years	12,400	22.9
Population aged 2-17 Years	24,698	45.6
Population aged 6-12 Years	10,511	19.4
Population aged 6-15 Years	14,653	27.1
Population aged 10-15 Years	8,217	15.2
Population aged 10-17 Years	10,859	20.1
Population aged 15-24 Years	12,451	23.0
Population aged 16-64 Years	27,600	51.0
Population aged 15-29 Years	17,500	32.3
Population aged 2 Years and Over	50,157	92.7
Population aged 10 Years and Over	36,318	67.1
Population aged 15 Years and Over	29,328	54.2
Population aged 18 Years and Over	25,459	47.0
Population aged 20 Years and Over	22,815	42.2
Population aged 65 Years and over	501	0.9

2: EDUCATION

2.1: Non School attendance of	Number	Percent
Persons aged 6-15 years not attending school	1,026	7.0
Males aged 6-15 years not attending school	439	6.3
Females aged 6-15 years not attending school	587	7.6
2.2: Persons attending Primary school	Number	Percent
Persons aged 6-12 years attending primary school	9,269	88.2
Males aged 6-12 years attending primary school	4,515	87.6
Females aged 6-12 years attending primary school	4,754	88.8
2.3: Persons attending Secondary school	Number	Percent
Persons aged 13-18 years attending secondary school	3,980	48.4
Males aged 13-18 years attending secondary school	1,783	51.9
Females aged 13-18 years attending secondary school	2,197	46.0
2.4: Persons not in School and Highest Level Completed is below S.4	Number	Percent
Persons aged 15 years and above whose highest level of education completed is below S.4	14,441	67.2
Males aged 15 years and above whose highest level of education completed is below S.4	5,596	59.6
Females aged 15 years and above whose highest level of education completed is below S.4	8,845	73.1
2.5: Persons not in School and Highest Level Completed is "O" Level	Number	Percent
Persons aged 18 years and above whose highest level of education completed is "O" level (S.4)	3,493	13.7
Males aged 18 years and above whose highest level of education completed is "O" level (S.4)	1,791	16.2
Females aged 18 years and above whose highest level of education completed is "O" level (S.4)	1,702	11.8
2.6: Persons not in School and Highest Level Completed is "A" Level	Number	Percent
Persons aged 20 years and above whose highest level of education completed is "A" level (S.6)	1,241	5.4
Males aged 20 years and above whose highest level of education completed is "A" level (S.6)	789	7.9
Females aged 20 years and above whose highest level of education completed is "A" level (S.6)	452	3.5

3: ILLITERACY STATUS

3.1: Persons aged 18 years and above	Number	Percent
Persons aged 18 years and above who are illiterate	5,014	19.7
Males aged 18 years and above who are illiterate	1,465	13.2
Females aged 18 years and above who are illiterate	3,549	24.7
3.2: Other age groups	Number	Percent
Persons aged 10-17 years who are illiterate	1,249	11.5
Persons aged 18-30 years who are illiterate	2,051	13.8
Persons aged 60 years and above who are illiterate	459	54.4

4: OWNERSHIP OF A BIRTH CERTIFICATE

4.1: Children with Birth Certificates	Number	Percent
Children less than 1 year who have a Birth Certificate	707	32.9
Children less than 5 years who have a Birth Certificate	3,357	34.8
Children 0-8 years who have a Birth Certificate	5,796	35.4
Children 0-17 years who have a Birth Certificate	10,076	36.8

5: PARENTAL SURVIVAL AND ORPHANHOOD

5.1: Children 0-8 years	Number	Percent
Children 0-8 years who have lost one parent	600	3.7
Children 0-8 years who have lost both parents	46	0.3
Children 0-8 years who have lost at least a parent (total number of orphans)	646	3.9
Children 0-8 years who have both parents	15,725	96.1
5.2: All children (0-17 years)	Number	Percent
Children 0-17 years who have lost one parent	2,159	7.5
Children 0-17 years who have lost both parents	282	1.0
Children 0-17 years who have lost at least a parent (total number of orphans)	2,441	8.5
Children 0-17 years who have both parents	26,228	91.5

6: DISABILITY

6.1: Persons with a disability	Number	Percent
Persons aged 2 years and above with a disability	3,903	7.8
Persons aged 2 years and above with a seeing disability	2,207	4.4
Persons aged 2 years and above with a hearing disability	805	1.6
Persons aged 2 years and above with a walking disability	1,289	2.6
Persons aged 2 years and above with a remembering disability	1,061	2.1
Persons aged 2 years and above with multiple disabilities	853	22.4
Children aged 2-17 years with a disability	940	3.8
Youth aged 18-30 years with a disability	890	6.0
Older persons aged 60 years and above with a disability	408	48.4

7: MARRIAGE AND CHILDBEARING

7.1: Marital status of the population	Number	Percent
Persons aged 10 years and above who are married	8,984	44.0
Persons aged 18 years and above who are married	8,623	60.0
Females aged 50 years and above who are widowed	504	42.1
Females aged 10-17 years who have ever been married	400	6.6
Females aged 10-19 years who have ever been married	1,019	13.4

7.2: Females who have had a birth	Number	Percent
Females aged 12-17 years who have given birth	418	9.0
Females aged 12-19 years who have given birth	1,005	16.2

8: WORKING STATUS

8.1: Working persons	Number	Percent
Persons aged 10-15 years who were working	443	5.4
Persons aged 10-17 years who were working	920	8.5
Persons aged 18-30 years who were working	8,504	57.4
Persons aged 16-64 years who were working	17,385	63.0
Persons aged 18 years and above who were working	17,093	67.1
Persons aged 60 years and above who were working	416	49.3

8.2: Youths Not working and not in school		
Youths (Persons aged 18-30 years) who were neither working nor in school	3,114	21.0

9: USE OF ICT

9.1: Mobile phone ownership (10 years and above)	Number	Percent
Persons aged 10 years and above that own at least one mobile phone	20,602	56.7
Males aged 10 years and above that own at least one mobile phone	9,864	62.0
Females aged 10 years and above that own at least one mobile phone	10,738	52.6
9.2: Mobile phone ownership (18-30 years)	Number	Percent
Persons aged 18-30 years and above that own at least one mobile phone	10,787	72.8
Males aged 18-30 years and above that own at least one mobile phone	4,822	79.3
Females aged 18-30 years and above that own at least one mobile phone	5,965	68.3
9.3: Internet Usage (10 years and above)	Number	Percent
Persons aged 10 years and above that use internet	6,120	16.9
Males aged 10 years and above that use internet	3,804	23.9
Females aged 10 years and above that use internet	2,316	11.4
9.4: Internet Usage (18-30 years)	Number	Percent
Persons aged 18-30 years that use internet	3,560	24.0
Males aged 18-30 years that use internet	2,143	35.2
Females aged 18-30 years that use internet	1,417	16.2

10: HOUSING CONDITIONS

10.1: Construction Materials For the Dwelling Units	Number	Percent
Households living in dwelling units constructed using permanent roof materials	13,099	97.2
Households living in dwelling units constructed using permanent wall materials	9,932	73.7
Households living in dwelling units constructed using permanent floor materials	10,114	75.1
10.2: Status of Dwelling Units	Number	Percent
Households living in semi-permanent dwelling units	3,656	27.1
Households living in temporary dwelling units	335	2.5

11: ACCESS TO COMMUNITY SERVICES

11.1: Access to a Primary school	Number	Percent
Households that are 5 km or more to the nearest primary school, <u>whether public or private</u>	365	2.7
Households that are 5 km or more to the nearest <u>public</u> primary school	940	7.0
11.2: Access to a Secondary school	Number	Percent
Households that are 5 km or more to the nearest secondary school, <u>whether public or private</u>	679	5.0
Households that are 5 km or more to the nearest <u>public</u> secondary school	1515	11.2
11.3: Access to a Health Facility	Number	Percent
Households that are 5 km or more to the nearest health facility, <u>whether public or private</u>	503	3.7
Households that are 5 km or more to the nearest <u>public</u> health facility	1,237	9.2
11.4: Access to a Police post /Police station	Number	Percent
Households that are 5 km or more to the nearest Police Post/Police Station	1,049	7.8

12: HOUSEHOLD HEALTH AND HYGIENE

12.1:Ownership of Mosquito nets	Number	Percent
Households that own at least a mosquito net	11,599	86.1
Households that own at least a mosquito net that was received free (Government /NGO)	9,541	82.3
12.2: Source Of Water For Drinking	Number	Percent
Households that have access to piped water	7,435	55.2
Households that use a bore hole	1,879	13.9
12.3:Ownership of a Toilet facility	Number	Percent
Households without any toilet facility	112	0.8
12.4: Other environmental conditions	Number	Percent
Households that <u>properly</u> dispose off solid waste	11,969	88.8
Households which are not living in decent dwellings	12,730	94.5

13: HOUSEHOLD ASSETS

13.1: Owner occupied Dwellings	Number	Percent
Households that are owner occupied	3,468	25.7
Male headed households that are owner occupied	2,570	26.0
Female headed households that are owner occupied	898	25.0
13.2: Movable Assets	Number	Percent
Households that own a television	4,538	33.7
Households that own a computer	790	5.9
Households that own a bicycle	3,906	29.0
Households that own a radio	7,372	54.7

14: OTHER HOUSEHOLD CHARACTERISTICS

14.1: Main source of information	Number	Percent
Households whose main source of information is a radio	5,371	39.8
Households whose main source of information is a community announcer	509	3.8
Households whose main source of information is a telephone	1,070	7.9
14.2: Household Economy and Welfare	Number	Percent
Households that received remittances from abroad in the last 12 months	2,474	18.4
Households where any member possesses a bank account	4,503	33.4
Households that depend on subsistence farming as a main source of livelihood	732	5.4
Households with at least one member engaged in a non-agricultural household based enterprise	11,292	87.8
Households where (members aged 5 years and above) consume less than two meals in a day	1,512	11.2
14.3: Source of Energy for lighting	Number	Percent
Households that have access to electricity	5,539	41.1
Households that use Tadooba for lighting	3,670	27.2

15: HOUSEHOLD BASED AGRICULTURAL ACTIVITIES

15.1: Household based Agricultural activities	Number	Percent
Households engaged in crop growing	2,372	17.6
Households engaged in maize growing	2,057	15.3
Households engaged in coffee growing	17	0.1
Households engaged in growing of beans	1,083	8.0
Households engaged in growing of millet	104	0.8
Households engaged in growing of sweet potatoes	585	4.3
Households engaged in growing of matooke	239	1.8
Households engaged livestock farming	1,897	14.1
Households engaged in either crop growing or livestock farming	3,330	24.7

SAMIA BUGWE COUNTY NORTH CONSTITUENCY

LIST OF TABLES

- | | |
|----|---|
| 1 | Population |
| 2 | Education |
| 3 | Illiteracy status |
| 4 | Ownership of a Birth Certificate |
| 5 | Parental Survival and Orphanhood |
| 6 | Disability |
| 7 | Marriage and Child Bearing |
| 8 | Working Status |
| 9 | Use of ICT |
| 10 | Housing Conditions |
| 11 | Access to Community Services |
| 12 | Household Health and Hygiene |
| 13 | Household Assets |
| 14 | Other Household Characteristics |
| 15 | Household Based Agricultural Activities |

1: POPULATION

1.1: Population Size	Number	Percent
Total population	126,300	
Total male population	61,949	49.0
Total female population	64,351	51.0
Sex ratio (males per 100 females)	96.3	
1.2: Households	Number	Percent
Total households	23,795	
Households headed by males	19,054	80.1
Households headed by females	4,741	19.9
Households headed by children (aged 10-17 years)	56	0.2
Households headed by youth (aged 18-30 years)	5,520	23.2
Households headed by older persons (aged 60 years and above)	4,192	17.6
1.3: Population by Age groups	Number	Percent
Population aged 0-17 years	73,054	58.7
Population aged 18-30 years	24,559	19.7
Population aged 31-59 years	21,522	17.3
Population aged 60 years and over	5,239	4.2
1.4: Population by Special Age groups	Number	Percent
Population aged Less than one Year	4,793	3.9
Population aged 0-4 Years	23,018	18.5
Population aged 0-8 Years	40,560	32.6
Population aged 2-8 Years	31,277	25.1
Population aged 2-17 Years	63,771	51.3
Population aged 6-12 Years	29,177	23.5
Population aged 6-15 Years	39,739	32.0
Population aged 10-15 Years	22,473	18.1
Population aged 10-17 Years	28,493	22.9
Population aged 15-24 Years	24,681	19.8
Population aged 16-64 Years	53,765	43.2
Population aged 15-29 Years	32,070	25.8
Population aged 2 Years and Over	115,091	92.5
Population aged 10 Years and Over	79,813	64.2
Population aged 15 Years and Over	60,486	48.6
Population aged 18 Years and Over	51,320	41.3
Population aged 20 Years and Over	45,902	36.9
Population aged 65 Years and over	3,575	2.9

2: EDUCATION

2.1: Non School attendance of	Number	Percent
Persons aged 6-15 years not attending school	3,202	8.1
Males aged 6-15 years not attending school	1,695	8.5
Females aged 6-15 years not attending school	1,507	7.6
2.2: Persons attending Primary school	Number	Percent
Persons aged 6-12 years attending primary school	25,618	87.8
Males aged 6-12 years attending primary school	12,830	87.1
Females aged 6-12 years attending primary school	12,788	88.5
2.3: Persons attending Secondary school	Number	Percent
Persons aged 13-18 years attending secondary school	6,020	30.9
Males aged 13-18 years attending secondary school	3,259	33.5
Females aged 13-18 years attending secondary school	2,761	28.3
2.4: Persons not in School and Highest Level Completed is below S.4	Number	Percent
Persons aged 15 years and above whose highest level of education completed is below S.4	35,038	85.2
Males aged 15 years and above whose highest level of education completed is below S.4	15,807	80.4
Females aged 15 years and above whose highest level of education completed is below S.4	19,231	89.6
2.5: Persons not in School and Highest Level Completed is "O" Level	Number	Percent
Persons aged 18 years and above whose highest level of education completed is "O" level (S.4)	3,611	7.0
Males aged 18 years and above whose highest level of education completed is "O" level (S.4)	2,203	9.3
Females aged 18 years and above whose highest level of education completed is "O" level (S.4)	1,408	5.1
2.6: Persons not in School and Highest Level Completed is "A" Level	Number	Percent
Persons aged 20 years and above whose highest level of education completed is "A" level (S.6)	691	1.5
Males aged 20 years and above whose highest level of education completed is "A" level (S.6)	538	2.6
Females aged 20 years and above whose highest level of education completed is "A" level (S.6)	153	0.6

3: ILLITERACY STATUS

3.1: Persons aged 18 years and above	Number	Percent
Persons aged 18 years and above who are illiterate	18,350	35.8
Males aged 18 years and above who are illiterate	6,072	25.6
Females aged 18 years and above who are illiterate	12,278	44.5
3.2: Other age groups	Number	Percent
Persons aged 10-17 years who are illiterate	7,763	27.2
Persons aged 18-30 years who are illiterate	5,600	22.8
Persons aged 60 years and above who are illiterate	3,471	66.3

4: OWNERSHIP OF A BIRTH CERTIFICATE

4.1: Children with Birth Certificates	Number	Percent
Children less than 1 year who have a Birth Certificate	1,161	24.2
Children less than 5 years who have a Birth Certificate	6,541	28.4
Children 0-8 years who have a Birth Certificate	11,949	29.5
Children 0-17 years who have a Birth Certificate	22,939	32.7

5: PARENTAL SURVIVAL AND ORPHANHOOD

5.1: Children 0-8 years	Number	Percent
Children 0-8 years who have lost one parent	1,213	3.0
Children 0-8 years who have lost both parents	98	0.2
Children 0-8 years who have lost at least a parent (total number of orphans)	1,311	3.2
Children 0-8 years who have both parents	39,249	96.8
5.2: All children (0-17 years)	Number	Percent
Children 0-17 years who have lost one parent	4,575	6.3
Children 0-17 years who have lost both parents	515	0.7
Children 0-17 years who have lost at least a parent (total number of orphans)	5,090	7.0
Children 0-17 years who have both parents	67,964	93.0

6: DISABILITY

6.1: Persons with a disability	Number	Percent
Persons aged 2 years and above with a disability	11,362	9.9
Persons aged 2 years and above with a seeing disability	5,584	4.9
Persons aged 2 years and above with a hearing disability	3,194	2.8
Persons aged 2 years and above with a walking disability	3,976	3.5
Persons aged 2 years and above with a remembering disability	4,513	3.9
Persons aged 2 years and above with multiple disabilities	3,263	29.7
Children aged 2-17 years with a disability	2,766	4.3
Youth aged 18-30 years with a disability	1,732	7.1
Older persons aged 60 years and above with a disability	2,721	51.9

7: MARRIAGE AND CHILDBEARING

7.1: Marital status of the population	Number	Percent
Persons aged 10 years and above who are married	20,336	48.6
Persons aged 18 years and above who are married	19,566	70.9
Females aged 50 years and above who are widowed	2,387	42.8
Females aged 10-17 years who have ever been married	834	5.9
Females aged 10-19 years who have ever been married	2,162	12.7

7.2: Females who have had a birth	Number	Percent
Females aged 12-17 years who have given birth	794	7.7
Females aged 12-19 years who have given birth	2,002	15.4

8: WORKING STATUS

8.1: Working persons	Number	Percent
Persons aged 10-15 years who were working	8,758	39.0
Persons aged 10-17 years who were working	11,874	41.7
Persons aged 18-30 years who were working	19,264	78.4
Persons aged 16-64 years who were working	43,838	81.5
Persons aged 18 years and above who were working	43,194	84.2
Persons aged 60 years and above who were working	3,961	75.6

8.2: Youths Not working and not in school		
Youths (Persons aged 18-30 years) who were neither working nor in school	2,255	9.2

9: USE OF ICT

9.1: Mobile phone ownership (10 years and above)	Number	Percent
Persons aged 10 years and above that own at least one mobile phone	26,288	32.9
Males aged 10 years and above that own at least one mobile phone	15,621	41.2
Females aged 10 years and above that own at least one mobile phone	10,667	25.5
9.2: Mobile phone ownership (18-30 years)	Number	Percent
Persons aged 18-30 years and above that own at least one mobile phone	11,528	46.9
Males aged 18-30 years and above that own at least one mobile phone	6,702	59.3
Females aged 18-30 years and above that own at least one mobile phone	4,826	36.4
9.3: Internet Usage (10 years and above)	Number	Percent
Persons aged 10 years and above that use internet	3,464	4.3
Males aged 10 years and above that use internet	2,460	6.5
Females aged 10 years and above that use internet	1,004	2.4
9.4: Internet Usage (18-30 years)	Number	Percent
Persons aged 18-30 years that use internet	2,053	8.4
Males aged 18-30 years that use internet	1,423	12.6
Females aged 18-30 years that use internet	630	4.8

10: HOUSING CONDITIONS

10.1: Construction Materials For the Dwelling Units	Number	Percent
Households living in dwelling units constructed using permanent roof materials	11,478	48.2
Households living in dwelling units constructed using permanent wall materials	6,319	26.6
Households living in dwelling units constructed using permanent floor materials	6,205	26.1
10.2: Status of Dwelling Units	Number	Percent
Households living in semi-permanent dwelling units	7,057	29.7
Households living in temporary dwelling units	11,690	49.1

11: ACCESS TO COMMUNITY SERVICES

11.1: Access to a Primary school	Number	Percent
Households that are 5 km or more to the nearest primary school, <u>whether public or private</u>	1,283	5.4
Households that are 5 km or more to the nearest <u>public</u> primary school	1,912	8.0
11.2: Access to a Secondary school	Number	Percent
Households that are 5 km or more to the nearest secondary school, <u>whether public or private</u>	6036	25.4
Households that are 5 km or more to the nearest <u>public</u> secondary school	10483	44.1
11.3: Access to a Health Facility	Number	Percent
Households that are 5 km or more to the nearest health facility, <u>whether public or private</u>	3,834	16.1
Households that are 5 km or more to the nearest <u>public</u> health facility	5,616	23.6
11.4: Access to a Police post /Police station	Number	Percent
Households that are 5 km or more to the nearest Police Post/Police Station	7,601	31.9

12: HOUSEHOLD HEALTH AND HYGIENE

12.1:Ownership of Mosquito nets	Number	Percent
Households that own at least a mosquito net	22,389	94.1
Households that own at least a mosquito net that was received free (Government /NGO)	21,498	96.0
12.2: Source Of Water For Drinking	Number	Percent
Households that have access to piped water	481	2.0
Households that use a bore hole	10,978	46.1
12.3:Ownership of a Toilet facility	Number	Percent
Households without any toilet facility	2,722	11.4
12.4: Other environmental conditions	Number	Percent
Households that <u>properly</u> dispose off solid waste	7,553	31.7
Households which are not living in decent dwellings	23,504	98.8

13: HOUSEHOLD ASSETS

13.1: Owner occupied Dwellings	Number	Percent
Households that are owner occupied	21,362	89.8
Male headed households that are owner occupied	17,213	90.3
Female headed households that are owner occupied	4,149	87.5
13.2: Movable Assets	Number	Percent
Households that own a television	1,532	6.4
Households that own a computer	256	1.1
Households that own a bicycle	12,696	53.4
Households that own a radio	13,317	56.0

14: OTHER HOUSEHOLD CHARACTERISTICS

14.1: Main source of information	Number	Percent
Households whose main source of information is a radio	13,047	54.8
Households whose main source of information is a community announcer	699	2.9
Households whose main source of information is a telephone	1,508	6.3
14.2: Household Economy and Welfare	Number	Percent
Households that received remittances from abroad in the last 12 months	2,959	12.4
Households where any member possesses a bank account	3,305	13.9
Households that depend on subsistence farming as a main source of livelihood	19,075	80.2
Households with at least one member engaged in a non-agricultural household based enterprise	15,868	92.7
Households where (members aged 5 years and above) consume less than two meals in a day	1,216	5.1
14.3: Source of Energy for lighting	Number	Percent
Households that have access to electricity	1,233	5.2
Households that use Tadooba for lighting	18,758	78.8

15: HOUSEHOLD BASED AGRICULTURAL ACTIVITIES

15.1: Household based Agricultural activities	Number	Percent
Households engaged in crop growing	21,451	90.1
Households engaged in maize growing	20,722	87.1
Households engaged in coffee growing	202	0.8
Households engaged in growing of beans	7,099	29.8
Households engaged in growing of millet	2,108	8.9
Households engaged in growing of sweet potatoes	4,680	19.7
Households engaged in growing of matooke	1,839	7.7
Households engaged livestock farming	16,897	71.0
Households engaged in either crop growing or livestock farming	22,118	93.0

SAMIA BUGWE COUNTY SOUTH CONSTITUENCY

LIST OF TABLES

- | | |
|----|---|
| 1 | Population |
| 2 | Education |
| 3 | Illiteracy status |
| 4 | Ownership of a Birth Certificate |
| 5 | Parental Survival and Orphanhood |
| 6 | Disability |
| 7 | Marriage and Child Bearing |
| 8 | Working Status |
| 9 | Use of ICT |
| 10 | Housing Conditions |
| 11 | Access to Community Services |
| 12 | Household Health and Hygiene |
| 13 | Household Assets |
| 14 | Other Household Characteristics |
| 15 | Household Based Agricultural Activities |

1: POPULATION

1.1: Population Size	Number	Percent
Total population	142,564	
Total male population	69,024	48.4
Total female population	73,540	51.6
Sex ratio (males per 100 females)	93.9	
1.2: Households	Number	Percent
Total households	27,500	
Households headed by males	21,225	77.2
Households headed by females	6,275	22.8
Households headed by children (aged 10-17 years)	64	0.2
Households headed by youth (aged 18-30 years)	5,095	18.5
Households headed by older persons (aged 60 years and above)	5,866	21.3
1.3: Population by Age groups	Number	Percent
Population aged 0-17 years	82,770	58.3
Population aged 18-30 years	26,832	18.9
Population aged 31-59 years	25,138	17.7
Population aged 60 years and over	7,274	5.1
1.4: Population by Special Age groups	Number	Percent
Population aged Less than one Year	5,335	3.8
Population aged 0-4 Years	26,154	18.4
Population aged 0-8 Years	45,885	32.3
Population aged 2-8 Years	35,443	25.0
Population aged 2-17 Years	72,328	50.9
Population aged 6-12 Years	32,729	23.0
Population aged 6-15 Years	44,825	31.6
Population aged 10-15 Years	25,483	17.9
Population aged 10-17 Years	32,387	22.8
Population aged 15-24 Years	27,761	19.5
Population aged 16-64 Years	60,930	42.9
Population aged 15-29 Years	35,529	25.0
Population aged 2 Years and Over	131,572	92.6
Population aged 10 Years and Over	91,631	64.5
Population aged 15 Years and Over	69,716	49.1
Population aged 18 Years and Over	59,244	41.7
Population aged 20 Years and Over	53,039	37.3
Population aged 65 Years and over	5,218	3.7

2: EDUCATION

2.1: Non School attendance of	Number	Percent
Persons aged 6-15 years not attending school	2,683	6.0
Males aged 6-15 years not attending school	1,407	6.1
Females aged 6-15 years not attending school	1,276	5.8
2.2: Persons attending Primary school	Number	Percent
Persons aged 6-12 years attending primary school	29,191	89.2
Males aged 6-12 years attending primary school	14,870	88.6
Females aged 6-12 years attending primary school	14,321	89.8
2.3: Persons attending Secondary school	Number	Percent
Persons aged 13-18 years attending secondary school	6,921	30.9
Males aged 13-18 years attending secondary school	3,928	34.6
Females aged 13-18 years attending secondary school	2,993	27.1
2.4: Persons not in School and Highest Level Completed is below S.4	Number	Percent
Persons aged 15 years and above whose highest level of education completed is below S.4	39,710	84.9
Males aged 15 years and above whose highest level of education completed is below S.4	16,629	78.1
Females aged 15 years and above whose highest level of education completed is below S.4	23,081	90.6
2.5: Persons not in School and Highest Level Completed is "O" Level	Number	Percent
Persons aged 18 years and above whose highest level of education completed is "O" level (S.4)	4,047	6.8
Males aged 18 years and above whose highest level of education completed is "O" level (S.4)	2,577	9.9
Females aged 18 years and above whose highest level of education completed is "O" level (S.4)	1,470	4.4
2.6: Persons not in School and Highest Level Completed is "A" Level	Number	Percent
Persons aged 20 years and above whose highest level of education completed is "A" level (S.6)	668	1.3
Males aged 20 years and above whose highest level of education completed is "A" level (S.6)	518	2.2
Females aged 20 years and above whose highest level of education completed is "A" level (S.6)	150	0.5

3: ILLITERACY STATUS

3.1: Persons aged 18 years and above	Number	Percent
Persons aged 18 years and above who are illiterate	20,578	34.7
Males aged 18 years and above who are illiterate	6,043	23.1
Females aged 18 years and above who are illiterate	14,535	43.9
3.2: Other age groups	Number	Percent
Persons aged 10-17 years who are illiterate	8,400	25.9
Persons aged 18-30 years who are illiterate	5,789	21.6
Persons aged 60 years and above who are illiterate	4,782	65.7

4: OWNERSHIP OF A BIRTH CERTIFICATE

4.1: Children with Birth Certificates	Number	Percent
Children less than 1 year who have a Birth Certificate	779	14.6
Children less than 5 years who have a Birth Certificate	4,775	18.3
Children 0-8 years who have a Birth Certificate	9,074	19.8
Children 0-17 years who have a Birth Certificate	19,298	24.3

5: PARENTAL SURVIVAL AND ORPHANHOOD

5.1: Children 0-8 years	Number	Percent
Children 0-8 years who have lost one parent	1,625	3.5
Children 0-8 years who have lost both parents	100	0.2
Children 0-8 years who have lost at least a parent (total number of orphans)	1,725	3.8
Children 0-8 years who have both parents	44,160	96.2
5.2: All children (0-17 years)	Number	Percent
Children 0-17 years who have lost one parent	5,976	7.2
Children 0-17 years who have lost both parents	727	0.9
Children 0-17 years who have lost at least a parent (total number of orphans)	6,703	8.1
Children 0-17 years who have both parents	76,067	91.9

6: DISABILITY

6.1: Persons with a disability	Number	Percent
Persons aged 2 years and above with a disability	16,946	12.9
Persons aged 2 years and above with a seeing disability	8,659	6.6
Persons aged 2 years and above with a hearing disability	4,592	3.5
Persons aged 2 years and above with a walking disability	6,096	4.6
Persons aged 2 years and above with a remembering disability	6,408	4.9
Persons aged 2 years and above with multiple disabilities	5,099	31.1
Children aged 2-17 years with a disability	4,060	5.6
Youth aged 18-30 years with a disability	2,447	9.1
Older persons aged 60 years and above with a disability	4,447	61.1

7: MARRIAGE AND CHILDBEARING

7.1: Marital status of the population	Number	Percent
Persons aged 10 years and above who are married	23,640	48.4
Persons aged 18 years and above who are married	22,923	69.3
Females aged 50 years and above who are widowed	3,421	45.2
Females aged 10-17 years who have ever been married	768	4.9
Females aged 10-19 years who have ever been married	2,209	11.6

7.2: Females who have had a birth	Number	Percent
Females aged 12-17 years who have given birth	814	7.1
Females aged 12-19 years who have given birth	2,333	15.8

8: WORKING STATUS

8.1: Working persons	Number	Percent
Persons aged 10-15 years who were working	8,893	34.9
Persons aged 10-17 years who were working	12,125	37.4
Persons aged 18-30 years who were working	21,069	78.5
Persons aged 16-64 years who were working	49,751	81.7
Persons aged 18 years and above who were working	50,064	84.5
Persons aged 60 years and above who were working	5,385	74.0

8.2: Youths Not working and not in school		
Youths (Persons aged 18-30 years) who were neither working nor in school	1,505	5.6

9: USE OF ICT

9.1: Mobile phone ownership (10 years and above)	Number	Percent
Persons aged 10 years and above that own at least one mobile phone	27,687	30.2
Males aged 10 years and above that own at least one mobile phone	15,902	37.2
Females aged 10 years and above that own at least one mobile phone	11,785	24.1
9.2: Mobile phone ownership (18-30 years)	Number	Percent
Persons aged 18-30 years and above that own at least one mobile phone	11,246	41.9
Males aged 18-30 years and above that own at least one mobile phone	6,416	54.0
Females aged 18-30 years and above that own at least one mobile phone	4,830	32.3
9.3: Internet Usage (10 years and above)	Number	Percent
Persons aged 10 years and above that use internet	2,995	3.3
Males aged 10 years and above that use internet	2,199	5.1
Females aged 10 years and above that use internet	796	1.6
9.4: Internet Usage (18-30 years)	Number	Percent
Persons aged 18-30 years that use internet	1,645	6.1
Males aged 18-30 years that use internet	1,212	10.2
Females aged 18-30 years that use internet	433	2.9

10: HOUSING CONDITIONS

10.1: Construction Materials For the Dwelling Units	Number	Percent
Households living in dwelling units constructed using permanent roof materials	11,797	42.9
Households living in dwelling units constructed using permanent wall materials	7,048	25.6
Households living in dwelling units constructed using permanent floor materials	6,989	25.4
10.2: Status of Dwelling Units	Number	Percent
Households living in semi-permanent dwelling units	6,798	24.7
Households living in temporary dwelling units	14,968	54.4

11: ACCESS TO COMMUNITY SERVICES

11.1: Access to a Primary school	Number	Percent
Households that are 5 km or more to the nearest primary school, <u>whether public or private</u>	965	3.5
Households that are 5 km or more to the nearest <u>public</u> primary school	1,504	5.5
11.2: Access to a Secondary school	Number	Percent
Households that are 5 km or more to the nearest secondary school, <u>whether public or private</u>	7258	26.4
Households that are 5 km or more to the nearest <u>public</u> secondary school	9970	36.3
11.3: Access to a Health Facility	Number	Percent
Households that are 5 km or more to the nearest health facility, <u>whether public or private</u>	5,828	21.2
Households that are 5 km or more to the nearest <u>public</u> health facility	7,018	25.5
11.4: Access to a Police post /Police station	Number	Percent
Households that are 5 km or more to the nearest Police Post/Police Station	7,216	26.2

12: HOUSEHOLD HEALTH AND HYGIENE

12.1: Ownership of Mosquito nets	Number	Percent
Households that own at least a mosquito net	26,514	96.4
Households that own at least a mosquito net that was received free (Government /NGO)	25,830	97.4
12.2: Source Of Water For Drinking	Number	Percent
Households that have access to piped water	528	1.9
Households that use a bore hole	19,716	71.7
12.3: Ownership of a Toilet facility	Number	Percent
Households without any toilet facility	3,057	11.1
12.4: Other environmental conditions	Number	Percent
Households that <u>properly</u> dispose off solid waste	10,159	36.9
Households which are not living in decent dwellings	27,249	99.1

13: HOUSEHOLD ASSETS

13.1: Owner occupied Dwellings	Number	Percent
Households that are owner occupied	25,225	91.7
Male headed households that are owner occupied	19,642	92.5
Female headed households that are owner occupied	5,583	89.0
13.2: Movable Assets	Number	Percent
Households that own a television	1,540	5.6
Households that own a computer	262	1.0
Households that own a bicycle	14,530	52.8
Households that own a radio	14,588	53.0

14: OTHER HOUSEHOLD CHARACTERISTICS

14.1: Main source of information	Number	Percent
Households whose main source of information is a radio	14,406	52.4
Households whose main source of information is a community announcer	606	2.2
Households whose main source of information is a telephone	591	2.1
14.2: Household Economy and Welfare	Number	Percent
Households that received remittances from abroad in the last 12 months	3,739	13.6
Households where any member possesses a bank account	3,235	11.8
Households that depend on subsistence farming as a main source of livelihood	22,945	83.4
Households with at least one member engaged in a non-agricultural household based enterprise	19,452	91.3
Households where (members aged 5 years and above) consume less than two meals in a day	1,494	5.4
14.3: Source of Energy for lighting	Number	Percent
Households that have access to electricity	1,189	4.3
Households that use Tadooba for lighting	23,028	83.7

15: HOUSEHOLD BASED AGRICULTURAL ACTIVITIES

15.1: Household based Agricultural activities	Number	Percent
Households engaged in crop growing	24,928	90.6
Households engaged in maize growing	23,604	85.8
Households engaged in coffee growing	146	0.5
Households engaged in growing of beans	12,942	47.1
Households engaged in growing of millet	1,371	5.0
Households engaged in growing of sweet potatoes	5,448	19.8
Households engaged in growing of matooke	1,108	4.0
Households engaged livestock farming	19,849	72.2
Households engaged in either crop growing or livestock farming	25,979	94.5

APPENDICES

Appendix 1: Population by Sex and Type of Residence by District, Uganda 2014

Central	Male	Female	Urban	Rural	Total
Buikwe	207,324	215,447	299,628	123,143	422,771
Bukomansimbi	75,109	76,304	12,797	138,616	151,413
Butambala	50,082	50,758	15,553	85,287	100,840
Buvuma	48,414	41,476	9,935	79,955	89,890
Gomba	82,167	77,755	12,439	147,483	159,922
Kalangala	31,349	22,944	4,980	49,313	54,293
Kalungu	89,679	93,553	37,094	146,138	183,232
Kampala	712,762	794,318	1,507,080	0	1,507,080
Kayunga	180,706	187,356	27,061	341,001	368,062
Kiboga	75,847	72,371	33,520	114,698	148,218
Kyankwanzi	111,539	103,154	30,621	184,072	214,693
Luwero	226,805	230,153	95,749	361,209	456,958
Lwengo	133,474	141,479	42,919	232,034	274,953
Lyantonde	46,714	47,039	13,823	79,930	93,753
Masaka	145,552	151,452	103,227	193,777	297,004
Mityana	165,717	163,247	107,645	221,319	328,964
Mpigi	125,404	125,144	43,360	207,188	250,548
Mubende	346,654	337,694	113,803	570,545	684,348
Mukono	289,757	307,047	162,710	434,094	596,804
Nakaseke	104,795	92,578	39,397	157,976	197,373
Nakasongola	93,323	88,472	24,667	157,128	181,795
Rakai	254,366	261,943	34,041	482,268	516,309
Ssembabule	126,084	126,513	16,949	235,648	252,597
Wakiso	949,035	1,048,383	1,681,449	315,969	1,997,418

Eastern	Male	Female	Urban	Rural	Total
Amuria	132,521	138,407	17,385	253,543	270,928
Budaka	100,620	106,977	23,809	183,788	207,597
Bududa	105,820	104,353	13,753	196,420	210,173
Bugiri	185,925	196,988	64,223	318,690	382,913
Bukedea	98,684	104,916	10,927	192,673	203,600
Bukwo	45,058	44,298	12,094	77,262	89,356
Bulambuli	86,108	88,405	16,867	157,646	174,513
Busia	156,447	167,215	54,798	268,864	323,662
Butaleja	119,466	124,687	33,201	210,952	244,153
Buyende	158,615	164,452	23,201	299,866	323,067
Iganga	241,182	263,015	92,792	411,405	504,197
Jinja	230,189	241,053	172,714	298,528	471,242
Kaberamaido	106,042	108,984	4,032	210,994	215,026
Kaliro	115,969	120,230	16,753	219,446	236,199
Kamuli	236,389	249,930	58,984	427,335	486,319
Kapchorwa	51,658	53,528	44,211	60,975	105,186
Katakwi	81,673	84,558	9,280	156,951	166,231

Kibuku	97,476	104,557	17,436	184,597	202,033
Kumi	116,457	122,811	36,493	202,775	239,268
Kween	47,404	46,263	6,462	87,205	93,667
Luuka	113,566	124,454	10,264	227,756	238,020
Manafwa	173,580	180,245	53,837	299,988	353,825
Mayuge	229,252	243,987	33,756	439,483	473,239
Mbale	233,339	255,621	126,544	362,416	488,960
Namayingo	106,303	109,140	15,740	199,703	215,443
Namutumba	123,911	128,646	18,679	233,878	252,557
Ngora	68,414	73,505	15,148	126,771	141,919
Pallisa	188,125	198,765	37,937	348,953	386,890
Serere	139,493	146,410	12,158	273,745	285,903
Sironko	120,862	121,559	34,104	208,317	242,421
Soroti	144,976	151,857	49,685	247,148	296,833
Tororo	250,830	266,250	72,325	444,755	517,080

Northern	Male	Female	Urban	Rural	Total
Abim	52,456	55,510	17,168	90,798	107,966
Adjumani	108,298	116,953	41,064	184,187	225,251
Agago	110,495	117,297	29,153	198,639	227,792
Alebtong	110,989	116,552	6,702	220,839	227,541
Amolatar	73,014	74,152	21,479	125,687	147,166
Amudat	54,246	51,523	11,786	93,983	105,769
Amuru	91,284	95,412	9,302	177,394	186,696
Apac	180,995	187,631	75,300	293,326	368,626
Arua	374,755	407,322	61,962	720,115	782,077
Dokolo	89,476	93,617	20,135	162,958	183,093
Gulu	134,571	141,042	150,306	125,307	275,613
Kaabong	79,207	88,672	11,559	156,320	167,879
Kitgum	99,258	104,790	75,581	128,467	204,048
Koboko	102,250	104,245	57,902	148,593	206,495
Kole	117,164	122,163	8,860	230,467	239,327
Kotido	86,169	94,881	66,454	114,596	181,050
Lamwo	65,106	69,265	21,700	112,671	134,371
Lira	196,663	211,380	101,155	306,888	408,043
Maracha	87,900	98,234	9,291	176,843	186,134
Moroto	49,746	53,686	14,196	89,236	103,432
Moyo	68,940	70,072	10,579	128,433	139,012
Nakapiripirit	74,578	82,112	3,727	152,963	156,690
Napak	65,518	76,706	4,733	137,491	142,224
Nebbi	191,104	205,690	58,069	338,725	396,794
Nwoya	65,969	67,537	13,592	119,914	133,506
Omoro	78,837	81,895	18,952	141,780	160,732
Otuke	51,187	53,067	6,213	98,041	104,254
Oyam	187,121	196,523	18,399	365,245	383,644

Pader	86,635	91,369	13,382	164,622	178,004
Yumbe	230,626	254,196	34,806	450,016	484,822
Zombo	115,824	124,257	43,723	196,358	240,081

Western	Male	Female	Urban	Rural	Total
Buhweju	59,059	61,661	2,956	117,764	120,720
Buliisa	57,801	55,360	7,238	105,923	113,161
Bundibugyo	108,435	115,952	40,219	184,168	224,387
Bushenyi	114,207	120,236	56,070	178,373	234,443
Hoima	287,906	285,080	105,944	467,042	572,986
Ibanda	121,440	128,185	136,860	112,765	249,625
Isingiro	235,621	250,739	58,408	427,952	486,360
Kabale	158,238	173,097	78,585	252,750	331,335
Kabarole	233,648	235,588	158,231	311,005	469,236
Kagadi	171,812	179,221	45,286	305,747	351,033
Kakumiro	147,157	145,951	9,834	283,274	293,108
Kamwenge	202,503	211,951	22,840	391,614	414,454
Kanungu	121,081	131,063	51,008	201,136	252,144
Kasese	338,215	356,772	140,050	554,937	694,987
Kibaale	70,815	70,132	6,650	134,297	140,947
Kiruhura	166,214	161,863	31,874	296,203	328,077
Kiryandongo	132,822	133,375	55,770	210,427	266,197
Kisoro	126,055	155,650	27,611	254,094	281,705
Kyegegwa	140,617	141,020	26,294	255,343	281,637
Kyenjojo	210,599	211,605	64,812	357,392	422,204
Masindi	148,121	142,992	94,438	196,675	291,113
Mbarara	230,082	242,547	195,318	277,311	472,629
Mitooma	86,484	96,960	11,396	172,048	183,444
Ntoroko	34,038	32,967	23,789	43,216	67,005
Ntungamo	232,469	251,372	71,485	412,356	483,841
Rubanda	92,011	104,885	26,669	170,227	196,896
Rubirizi	61,765	67,384	17,274	111,875	129,149
Rukungiri	150,016	164,678	43,576	271,118	314,694
Sheema	99,225	108,118	110,256	97,087	207,343

Appendix 2: The Household Questionnaire and codelist for the National Population and Housing Census 2014



Republic of Uganda

National Population and Housing Census 2014

HOUSEHOLD QUESTIONNAIRE



BOOK NUMBER

IDENTIFICATION PARTICULARS

WRITE NAME IN CAPITAL LETTERS		CODE
DISTRICT:		
COUNTY/MUNICIPALITY:		
SUB COUNTY/DIVISION/TOWN COUNCIL:		
PARISH/WARD:		
LC1:		
EA:		

		Code
ENUMERATOR'S NAME AND CODE:		
ENUMERATOR'S SIGNATURE:		
DATE: (dd/mm/yyyy):		
PARISH SUPERVISOR'S NAME AND CODE:		
PARISH SUPERVISOR'S SIGNATURE:		
DATE: (dd/mm/yyyy):		

A


UGANDA BUREAU OF STATISTICS, P.O. Box 7186, Kampala, UGANDA. Tel: +256-414-706000. Fax: +256-414-237553. Email: ubos@ubos.org Website: www.ubos.org

60

61

[illegible]

[illegible]

DD4						HOUSEHOLD NUMBER					
SECTION 2: HOUSING CONDITIONS						SECTION 3: COMMUNITY SERVICES				SECTION 4: HOUSEHOLD CHARACTERISTICS	
What is the occupancy tenure of the dwelling unit?	What type of dwelling unit does this household occupy?	How many rooms were used on the Census Night for sleeping?	Types of materials mainly used for construction of the roof	Types of materials mainly used for construction of the wall	Types of materials mainly used for the floor	What is the distance from home to the nearest on foot, irrespective of whether you use the service or not <i>(Record distance in kms, if distance is given in miles, refer to code list H7-H13)</i>				What source of energy does this household mainly use for lighting ?	
H1	H2	H3	H4	H5	H6	H7			H11		H14
10 = Owner occupied 11 = Free Public 12 = Free Private 13 = Subsidized public 14 = Subsidized private 15 = Rented public 16 = Rented private 96 = Other	10 = Detached house (single or multi-storey) 11 = Semi-Detached house 12 = Flat in a Block of Flats 13 = Room or rooms of a Main House 14 = Servants Quarters 15 = Tenement (Muzigo) 16 = Garage 17 = Go down/Basement 18 = Store 96 = Other	If 9 or more were used, record 9	10 = Iron sheets 11 = Tiles 12 = Asbestos 13 = Concrete 14 = Tins 15 = Thatch 96 = Other	10 = Concrete/Stones 11 = Cement Blocks 12 = Burnt/Stabilised bricks 13 = Unburnt bricks with Cement 14 = Unburnt bricks with mud 15 = Wood 16 = Mud and Pole 17 = Tin/Iron sheets 96 = Other	10 = Earth 11 = Rammed earth 12 = Cement screed 13 = Concrete 14 = Tiles 15 = Brick 16 = Stone 17 = Wood 96 = Other						10 = Electricity- National grid (Umeme) 11 = Electricity- Solar 12 = Electricity- Personal Generator 13 = Electricity- Community/thermal plant 14 = Gas 15 = Liquefied Petroleum Gas (LPG) 16 = Biogas 17 = Paraffin-Lantern 18 = Paraffin-Tadooba 19 = Candles 20 = Firewood 21 = Cow Dung 22 = Grass (reeds) 96 = Other
SECTION 4: HOUSEHOLD CHARACTERISTICS (CONTINUED)											
What source of energy does this household mainly use for cooking ?	What is the household's main source of water for drinking?	What is the distance to this source of water ?	What type of toilet facility does this household mainly use?	Does the Household share this toilet facility with other households?	What is the most commonly used method of solid waste disposal from the household?	What type of bathroom does this household mainly use?	What type of kitchen does this household mainly use?				
H15	H16	H17	H18	H19	H20	H21	H22				
10 = Electricity- National grid (Umeme) 11 = Electricity- Solar 12 = Electricity- Personal Generator 13 = Electricity- Community/thermal plant 14 = Gas 15 = Liquefied Petroleum Gas (LPG) 16 = Biogas 17 = Paraffin-Stove 18 = Charcoal 19 = Firewood 20 = Cow Dung 21 = Grass (reeds) 96 = Other	10 = Piped water into dwelling 11 = Piped water to the yard 12 = Public Taps 13 = Borehole in yard/plot 14 = Public borehole 15 = Protected well/spring 16 = Unprotected well/spring 17 = River/Stream/Lake 18 = Vendor 19 = Tanker Truck 20 = Gravity Flow Scheme 21 = Rain Water 22 = Bottled Water 96 = Other	<i>(Record distance in kms, if distance is given in miles, see distance conversion list)</i> <i>If the water source is on premises, record 0.0</i>	10 = Flush Toilet 11 = VIP Latrine 12 = Covered Pit Latrine <u>with a slab</u> 13 = Covered Pit Latrine <u>without a slab</u> 14 = Uncovered Pit Latrine <u>with a slab</u> 15 = Uncovered Pit Latrine <u>without a slab</u> 16 = Ecosan (compost toilet) 17 = No facility, bush, polythene bags, bucket, etc 96 = Other	1 = Yes 2 = No 7 = N/A (For "No Facility, Bush, Polythene bags, bucket etc)	10 = Occupants dispose solid waste in the garden, and DO NOT burn or bury it. 11 = Occupants burn solid waste 12 = Occupants bury solid waste 13 = Occupants dispose solid waste in a local dump supervised by urban authorities 14 = Occupants dispose solid waste in a local dump NOT supervised by urban authorities 15 = Solid waste collected by waste vendor 16 = Occupants dispose solid waste into river/sea/stream/pond 96 = Other arrangements	10 = Inside, drainage provided 11 = Inside, no drainage provided 12 = Outside built, drainage provided 13 = Outside built, no drainage provided 14 = Make shift 15 = None 96 = Other	10 = Inside, specific room 11 = Inside, no specific room 12 = Outside, built 13 = Make shift 14 = Open space				
HOUSEHOLD ASSETS		INFORMATION	POSTAL SERVICES	MOSQUITO NETS		SOURCE OF LIVELIHOOD		REMITTANCES			
Does any member of this household own..... (ASSETS)? <i>If Yes, record the number, if 9 or more, write 9 If none, record 0</i>		What is the household's main source of information?	Did any member of this household send/receive a letter/parcel by postal services during the last 12 months ?	Does this household have any mosquito nets ?	IF YES IN H26, were the mosquito nets given free or were they bought ? Record the appropriate code in the boxes below 1 = Yes; 2 = No; 7 = NA; 8 = DK	What was the main source of the household's livelihood in the last 12 months ?	Did the household receive any money or physical items from any relative / family member / friend abroad during the last 12 months ?	IF YES IN H29, in which countries do the relatives / family members / friends reside ? 1 = Yes; 2 = No; 7=N/A			
H23		H24	H25	H26	H27	H28	H29	H30			
A: Motor vehicle	G: Television	10 = Radio 11 = Word of Mouth 12 = Telephone 13 = Print Media 14 = Post Mail 15 = Hand Mail 16 = Television 17 = Community Meetings	1 = Yes, Once 2 = Yes, Twice 3 = Yes, Thrice 4 = Yes, 4 times and above 5 = No 8 = Don't Know	1 = Yes 2 = No	A=Given free by Gov't B= Given free by NGO C= Given free by friend/relative D= Bought	10 = Subsistence farming 11 = Commercial farming 12 = Employment income 13 = Business Enterprise 14 = Cottage Industry 15 = Property Income 16 = Family / Friends / Relatives 17 = Institutional or Program support (e.g Red Cross, WFP, e.t.c) 18 = Sale of assets 96 = Other	1 = Yes, both goods and money 2= Yes, Money only 3 = Yes, Goods only 4 = No 8 = DK	A. Australia B. Canada C. France D. Germany E. India F. Japan G. Kenya H. Libya I. Saudi Arabia	J. South Africa K. U.K L. U.S.A M. Sweden N. United Arab Emirates O. Yemen P. South Sudan X. Other country Y. Don't know country of origin		
B: Motor cycle	H: Radio	18 = Internet 19 = Community Announcer 96 = Other									
C: Bicycle	I: Fixed Phone										
D: Wheel Chair	J: Computer / Laptop										
E: Canoe / Boat	K: Generator										
F: Donkey											

BOOK NUMBER		SHEET NUMBER 03		HOUSEHOLD NUMBER											
SECTION 4: HOUSEHOLD CHARACTERISTICS (CONTINUED)								SECTION 5: AGRICULTURAL MODULE							
H31	H32	H33	H34	H35	H36	H37	H38	A1	A2	A3	A4				
Does any member in this household have a functional account in the Bank or any other financial institution? (Active in last 12 months) 1= Yes, have an account in the Bank 2= Yes, have an account in another financial institution 3= Yes, have both in a bank and another financial institution 4= No 8= DK	How many meals do household members aged 5 years and above usually eat on average per day ? (Record number of meals in the box provided)	Does every member in this household use soap to bathe? 1 = Yes 2 = No 8 = DK	Did every member in this household take sugar (at least once a day) during the last week? 1 = Yes 2 = No 8 = DK	Do you have salt in the house now? 1 = Yes 2 = No 8 = DK	Does every member in this household have at least two sets of clothing ? 1 = Yes 2 = No 8 = DK	Does every member in this household have at least one pair of shoes ? WITH EXCEPTION OF CHILDREN AGED ONE YEAR OR LESS 1 = Yes 2 = No 8 = DK	Does every child in this household (i.e. all those under 18 years) have a separate blanket ? 1=Yes 2=No 7=N/A	Does this household currently undertake any of the following agricultural activities 1 =Yes, within EA 2 =Yes, outside EA but within District 3 = No I. Exotic / Cross breed cattle II. Local cattle rearing III. Goat rearing IV. Sheep rearing V. Piggery (pig rearing) VI Poultry/Birds keeping VII. Rabbit rearing VIII. Apiculture (Bee keeping) IX. Aquaculture (fish farming) X. Presence of Forest / wooded land XI. Crop growing	IF YES IN A1, how many does this household own? 1 2 3 4 5 6 7 8 9 10 11	IF YES IN A1, what is the main purpose of production? 1=Home Consumption 2=Sale 7=N/A	List the crops grown on the holding in order of importance Ser. No. Crop Name Crop Code If no crop grown, write 97				
SECTION 6: DEATHS IN THE HOUSEHOLD IN THE LAST 12 MONTHS															
H39	H40														
Is any member of the household involved in any household-based enterprise ? 1 = Yes 2 = No	What is the nature of the enterprise? (<i>If the household has more than one enterprise, record the one considered by the family as the most important</i>) 10 Agriculture 11 Trade 12 Food processing 13 Other manufacturing 14 Services 15 Hotels and Restaurant 16 Mining and Quarrying 96 Other 97 No enterprise														
D1	D2	D3	D4	D5	D6-D8-FOR FEMALES WHO DIED AGED 12-54 YEARS										
Did any deaths occur in this household in the last 12 months? I mean from September 2013 upto December 2013. What about from 1st January 2014 to 27th August 2014?	What was the name of the deceased? If no death in D1, write "Not Applicable" and end Interview	What was the sex of [NAME]? 1 = Male 2 = Female 7 = N/A	How old was [NAME] at the time of death (in completed years)? <i>If age is less than one year, write 00</i>	What was the cause of [NAME'S] death? 1 = Disease 2 = Accident 3 = Violence 4 = Witchcraft 6 = Others 7 = N/A 8 = DK	Was [NAME] pregnant at the time of her death? 1= Yes 2= No 7= N/A 8= DK	Did [NAME] die while giving birth? 1= Yes 2= No 7= N/A 8= DK	Did [NAME] die within 6 weeks after delivery? 1= Yes 2= No 7= N/A 8= DK								
1= Yes 2= No 8= Don't know	1) 2) 3) 4) 5)														
If there is any "YES" in A1, ask Question A5, otherwise write 97 in Question A5															
A5								A6				A7			
Which of the household members is the lead holder? (Record the person number of holder from P0) If not listed, record 00								Does the holding carry out any type of irrigation? 1=Yes 2=No 7=N/A				Does this household own agricultural land? 1 = Yes 2 = No			
01A															

DISTRICT OF PREVIOUS RESIDENCE (P12)					H7-H13, H17			
Central	Eastern	Northern	Western	Country of Previous Residence	Distance Conversion			
					1 mile = 1.6 km			
101 Kalangala	201 Bugiri	301 Adjumani	401 Bundibugyo	671 Kenya	Mile	Km	Mile	Km
102 Kampala	202 Busia	302 Apac	402 Bushenyi	672 Tanzania	0.5 =	0.8	16.5 =	26.4
103 Kiboga	203 Iganga	303 Arua	403 Hoima	673 Rwanda	1.0 =	1.6	17.0 =	27.2
104 Luwero	204 Jinja	304 Gulu	404 Kabale	674 Burundi	1.5 =	2.4	17.5 =	28.0
105 Masaka	205 Kamuli	305 Kitgum	405 Kabarole	675 South Sudan	2.0 =	3.2	18.0 =	28.8
106 Mpigi	206 Kapchorwa	306 Kotido	406 Kasese	676 Dem. Rep. Of Congo	2.5 =	4.0	18.5 =	29.6
107 Mubende	207 Katakwi	307 Lira	407 Kibaale	677 Somalia	3.0 =	4.8	19.0 =	30.4
108 Mukono	208 Kumi	308 Moroto	408 Kisoro	678 Other Africa	3.5 =	5.6	19.5 =	31.2
109 Nakasongola	209 Mbale	309 Moyo	409 Masindi	681 United Kingdom	4.0 =	6.4	20.0 =	32.0
110 Rakai	210 Pallisa	310 Nebbi	410 Mbarara	682 Other Europe	4.5 =	7.2	20.5 =	32.8
111 Sembabule	211 Soroti	311 Nakapiripirit	411 Ntungamo	683 Asia 684 USA	5.0 =	8.0	21.0 =	33.6
112 Kayunga	212 Tororo	312 Pader	412 Rukungiri	685 Canada	5.5 =	8.8	21.5 =	34.4
113 Wakiso	213 Kaberamaido	313 Yumbe	413 Kamwenge	686 Central & Latin America	6.0 =	9.6	22.0 =	35.2
114 Lyantonde	214 Mayuge	314 Abim	414 Kanungu	687 Australia	6.5 =	10.4	22.5 =	36.0
115 Mityana	215 Sironko	315 Amolatar	415 Kyenjojo	688 Oceania	7.0 =	11.2	23.0 =	36.8
116 Nakaseke	216 Amuria	316 Amuru	416 Buliisa	689 Non-Ugandan-Not Stated	7.5 =	12.0	23.5 =	37.6
117 Buikwe	217 Budaka	317 Dokolo	417 Ibanda		8.0 =	12.8	24.0 =	38.4
118 Bukomasimbi	218 Bududa	318 Kaabong	418 Isingiro		8.5 =	13.6	24.5 =	39.2
119 Butambala	219 Bukedea	319 Koboko	419 Kiruhura		9.0 =	14.4	25.0 =	40.0
120 Buvuma	220 Bukwo	320 Maracha	420 Buhweju		9.5 =	15.2	25.5 =	40.8
121 Gomba	221 Butaleja	321 Oyam	421 Kiryandongo		10.0 =	16.0	26.0 =	41.6
122 Kalungu	222 Kaliro	322 Agago	422 Kyegegwa		10.5 =	16.8	26.5 =	42.4
123 Kyankwanzi	223 Manafwa	323 Alebtong	423 Mitooma		11.0 =	17.6	27.0 =	43.2
124 Lwengo	224 Namutumba	324 Amudat	424 Ntoroko		11.5 =	18.4	27.5 =	44.0
	225 Bulambuli	325 Kole	425 Rubirizi		12.0 =	19.2	28.0 =	44.8
	226 Buyende	326 Lamwo	426 Sheema		12.5 =	20.0	28.5 =	45.6
	227 Kibuku	327 Napak			13.0 =	20.8	29.0 =	46.4
	228 Kween	328 Nwoya			13.5 =	21.6	29.5 =	47.2
	229 Luuka	329 Otuke			14.0 =	22.4	30.0 =	48.0
	230 Namayingo	330 Zombo			14.5 =	23.2	30.5 =	48.8
	231 Ngora				15.0 =	24.0	31.0 =	49.6
	232 Serere				15.5 =	24.8	31.5 =	50.4
					16.0 =	25.6	32.0 =	51.2