



National Population and Housing Census 2014

Area Specific Profiles



Gulu District

April 2017

This report presents findings of National Population and Housing Census (NPHC) 2014 undertaken by the Uganda Bureau of Statistics (UBOS). Additional information about the Census may be obtained from the UBOS Head Office, Statistics House. Plot 9 Colville Street, P. O. Box 7186, Kampala, Uganda; Telephone: +256-414 706000 Fax: +256-414 237553; E-mail: ubos@ubos.org; Website: www.ubos.org

Cover Photos: Uganda Bureau of Statistics

Recommended Citation

Uganda Bureau of Statistics 2017, The National Population and Housing Census 2014 – Area Specific Profile Series, Kampala, Uganda.

FOREWORD

Demographic and socio-economic data are useful for planning and evidence-based decision making in any country. Such data are collected through Population Censuses, Demographic and Socio-economic Surveys, Civil Registration Systems and other Administrative sources. In Uganda, however, the Population and Housing Census remains the main source of demographic data, especially at the sub-national level.

Population Census taking in Uganda dates back to 1911 and since then the country has undertaken five such Censuses. The most recent, the National Population and Housing Census 2014, was undertaken under the theme 'Counting for Planning and Improved Service Delivery'. The enumeration for the 2014 Census was conducted in August/September 2014. The Uganda Bureau of Statistics (UBOS) worked closely with different Government Ministries, Departments and Agencies (MDAs) as well as Local Governments (LGs) to undertake the census exercise.

The 2014 Census provides several statistics on different aspects of the population. These include the population size and distribution which is a key indicator used for resource allocation, measurement of the extent of service delivery, decision making and budgeting among others. Other information includes the characteristics of the population, those of the dwellings they live in and information on the Household based Agricultural activities.

On behalf of the Bureau, I would like to appreciate the Government of Uganda for providing the necessary resources and infrastructure for undertaking the National Population and Housing Census (NPHC) 2014. In addition, the Bureau would like to thank the Development Partners, particularly United Kingdom Aid (UKAid), the United Nations Fund for Population Activities (UNFPA) and the United Nations Children's Fund (UNICEF) for providing technical and financial support towards the Census. The Bureau would also like to thank the Media for creating awareness about the Census 2014 and, most importantly, the individual households who voluntarily provided the required information.

Together We Count



Ben Paul Mungyereza
EXECUTIVE DIRECTOR

PREFACE

The Uganda Bureau of Statistics Act No. 12 of 1998 provides for the Minister responsible for Planning to direct ‘that a Census be taken’ on any matter specified in the Act. This was the legal basis for conducting the National Population and Housing Census (NPHC) 2014. The long-term objective of the NPHC 2014 is to ensure availability of bench-mark demographic and socio-economic data for use in planning, evidence based decision making, policy formulation and programme evaluation.

In order to support the planning process, the results from the Census 2014 are being released in phases as and when they become available. The Provisional Results Report was released in November, 2014 followed by the Final Results which were released in March 2016 and the Sub-county Reports in June 2016. These reports collectively provided information on the characteristics of the population and households at the national, district and sub-county levels.

The **Constituency Profiles Series** presents the characteristics of the population and household as well as the housing conditions of the population in each parliamentary constituency of the district. For convenience, however, the profiles of all constituencies in one district have been published in one report. In each report, the Appendix has selected national level tables for reference.

Uganda Bureau of Statistics (UBOS) is in the process of producing several other reports including the National Analytical Results (Monograph Series), District-level Analytical Reports and the Census Atlas. These will present detailed findings covering more indicators on different thematic areas. In addition to the above reports, the Bureau will be providing electronic datasets to facilitate deeper analysis of the data.

The Bureau, appeals to Policy Makers, Researchers and Academicians to make extensive use of this information for policy analysis and evidence-based decision-making at different levels of service delivery. Together we can harness information resources from the Census to improve service delivery and create a better Uganda.

ABOUT THE INDICATORS

Household

A group of persons who usually eat and live together. A household may be comprised of one or more persons provided they share the same meal and sleep under the same roof. The persons may be related usually in a family setting or may not be related.

Household population

All those persons who were enumerated in households. It excludes population which was enumerated on the streets (floating population) or those who were living in Institutions such as correction centres, religious institutions and health facility in-patients.

Population size

Refers to the total population count in the country or any geographical location based on the census reference night. It includes all those persons who were enumerated in households and institutions.

Population by age groups or specific age

This is the total count of the household population by a given age, age- groups or special age-groups. It excludes the non-household population.

Education characteristics/indicators

The indicators refer to specific age groups. The official school going age is 6-12 years for primary education, 13-18 years for secondary education and 19-24 years for tertiary education. However, the analysis includes the age-group 6-15 years to take into consideration those who start primary level at more than 6 years.

For those who have never been to school, we consider the age group 15 years and above on the assumption that by age 15, there are minimal chances for one joining school for the first time.

Illiteracy

This is defined as lack of the ability to read and write with understanding in any language. Persons aged 10 years and above who could not read and write responded (Codes 2, 3 and 4) to Question P21 of the Household Questionnaire. The objective of using this indicator is to shed light on the areas that need improvements in the delivery of the services.

Ownership of a birth certificate

Ownership includes all those persons (adults or children) who either had a Short Birth Certificate or a Long Birth Certificate during census enumeration. The analysis is based on specific age categories.

Parental survival and Orphanhood

Parental survival and orphanhood are derived variables which are based on two questions (P10 and P11), whether or not the biological mother/father of the respondent was still alive at the time of the census. Orphans are persons below the age of 18 who have lost any or both of their parents.

Disability

The questions P14 to P17 on functional difficulty are used to determine whether the person has a disability or not. It includes all persons aged 2 years and above. An individual is considered to be disabled if he/she has any one of the 4 questions with at least some difficulty.

Multiple disabilities refer to all persons who reported more than one functional difficulty.

Marriage and Child Bearing

Marital Status refers to all those persons who are living together and consider themselves as married. It includes all forms of consensual union whether legal or non-legal, religious or cultural or non-consensual union.

Employment

Questions on employment were eligible for all household population aged 10 years and above. Currently the age category for the working population 16 -64 years. The analysis is based on specific age groups of children 10-15 years, (other countries define a child as anyone below the age of 16, hence the age group 10-15 years).

Construction materials of the dwelling

The information is derived from the question on “materials used for the roof, floor and wall. Permanent floor materials include concrete, cement screed, tiles, wood, while permanent roof materials include roof tiles, iron sheets, asbestos and concrete.

Status of dwelling

The permanency nature of construction materials determines the status of the dwelling. The idea is to be able to classify a dwelling unit as temporary or permanent.

Access to community services

The choice of indicators is for those households that are beyond the 5 km radius for access to services (access to public/private schools, health facilities and a police station/post). The nearness of the service to the household does not take into consideration whether the services are utilized by the household or not.

Other environmental conditions – waste disposal

Any household was considered to have proper waste disposal if at the time of the census it disposed off solid waste using registered or unregistered waste vendors as well as using skip bins provided by the Municipal authority.

Owner occupied dwellings

These are disaggregated by household headship. The percentages for male and female headed households may not add up to 100. For instance among the female headed households, what proportion are owner occupied? Among the male headed households, what proportion are owner occupied?

Source of energy for lighting – electricity

In the household questionnaire, Question H14 had about four forms of electricity used for lighting (grid, generator, solar, community/thermal plant). Any household that indicated using any of the four forms was considered to have access to electricity.

Household based agricultural activities

A household engaged in agriculture is one which is engaged in any of the following:

Growing of any crops, or rearing animals or involved in bee keeping or forestry/tree growing, and any fish farming. Agricultural activities outside the district were not considered.

TABLE OF CONTENTS

FOREWORD	i
PREFACE.....	ii
ABOUT THE INDICATORS	iv
INTRODUCTION	1
1.1 General Information about Uganda	1
1.2 About the National Population and Housing Census 2014	1
1.3 National Highlights of the 2014 Census Results.....	2
AREA SPECIFIC PROFILES.....	11
GULU DISTRICT	12
GULU MUNICIPALITY CONSTITUENCY	21
ASWA COUNTY CONSTITUENCY.....	30
APPENDICES	39
Appendix 1: Population by Sex and Type of Residence by District, Uganda 2014..	40
Appendix 2: The Household Questionnaire and Codelist for the National Population and Housing Questionnaire, 2014.....	43

LIST OF MAPS

- Map 1: Districts of Uganda as of 1st July 2016
- Map 2: Gulu District Parliamentary Constituencies as of 1st July, 2016
- Map 3: Distribution of Population by Sub-county; Gulu District, 2014
- Map 4: Percentage Distribution of Population Aged 6-12 Years Not in School; Gulu District, 2014
- Map 5: Percentage Distribution of Youth Population aged 18-30 Years, Not in School and Not Working; Gulu District, 2014
- Map 6: Percentage Distribution of Population aged 10-19 Years, Ever Married; Gulu District, 2014
- Map 7: Percentage Distribution of Orphans aged 0-17 Years; Gulu District, 2014
- Map 8: Percentage Distribution of Households 5 Km and Over to the nearest Public Health Facility; Gulu District, 2014
- Map 9: Percentage Distribution of Households without access to Safe Water; Gulu District, 2014
- Map 10: Percentage Distribution of Households with no Toilet facility; Gulu District, 2014
- Map 11: Percentage Distribution of Households having less than 2 meals a day; Gulu District, 2014

INTRODUCTION

1.1 General Information about Uganda

Location and Size

Uganda is located in East Africa and lies across the equator, about 800 kilometres inland from the Indian Ocean. It lies between 1° 29' South and 4° 12' North latitude, 29° 34' East and 35° 0' East longitude. The country is landlocked, bordered by Kenya in the East; South Sudan in the North; Democratic Republic of Congo in the West; Tanzania in the South; and Rwanda in South West. It has a total area of 241,551 square kilometres, of which the land area covers 200,523 square kilometres.

Administration

The country is divided into 116 districts. The districts are further subdivided into 200 Counties, 1,378 Sub counties and 6,495 Parishes. The role of these local governments is to implement and monitor government programmes at the respective levels. Overtime, the administrative units have been sub-divided with the aim of easing administration and improving the delivery of services.

1.2 About the National Population and Housing Census 2014

The overall objective of the National Population and Housing Census (NPHC) 2014 was to provide data that are required for planning at all levels. The NPHC 2014 had three distinct phases namely, the Preparatory Phases, the Enumeration Phase and the Post Enumeration Phase.

The preparatory work for the Census 2014 started in 2008 with development of the overall strategy of undertaking the census. Other preparatory activities included development of the questionnaires, undertaking of the census mapping, conducting the Pilot Census, carrying out the census advocacy and publicity and other administrative support services.

The enumeration phase included recruitment and training of field staff, delivery of enumeration materials, conducting the main census enumeration and retrieval of materials. The census activities in the district were conducted under the overall responsibility of the Chief Administrative Officers (CAOs) or the Executive Director in the case of Kampala Capital City Authority (KCCA). All field staff underwent mandatory ten (10) day training on Census concepts and procedures.

The Census Reference Night was the night of 27th August 2014 and the enumeration was conducted on a *de facto* basis. The enumeration started on 28th August and continued to 7th September 2014. The Enumerators moved from household to household within the assigned Enumeration Areas (EAs) and administered the Census questionnaire to the Head of household or any other assigned household member through face to face interviews.

The data processing was centrally managed at the Bureau offices. The filled questionnaires were captured with scanning technology and the information extracted using automatic character recognition.

Data quality assurance enhances credibility, usability and utility of data. The Post Enumeration Survey (PES) was used as one of the tools to evaluate the quality of the census data through testing the completeness of coverage and accuracy. The PES enumeration was undertaken in October/November 2014, and it covered 800 EAs distributed in all the districts and Kampala Capital City.

1.3 National Highlights of the 2014 Census Results

The results of the NPHC 2014 will be published in phases. The Provisional Census Results were disseminated in November 2014. These gave the number of households and the population by sex for administrative areas down to subcounty level. The first set of the final results of the Census 2014 were published in the Main Report which was released in March 2016. The report includes information on the population size and distribution as well as characteristics of the population and the dwellings they live in. The results showed that the total population of Uganda in 2014 was 34.6 million persons as shown in Table 1.

Between 2002 and 2014, the population increased from 24.2 million to 34.6million. This implied average growth rate of 3.0 percent per annum.

Table 1: Population size and Population Growth Rates, Uganda, 1969-2014

Census year	Male	Female	Total	Inter-censal Period	Average Annual Growth Rate (%)
1969	4,812,447	4,722,604	9,535,051		
1980	6,259,837	6,376,342	12,636,179	1969-1980	2.7
1991	8,185,747	8,485,558	16,671,705	1980-1991	2.5
2002	11,824,273	12,403,024	24,227,297	1991-2002	3.2
2014	17,060,832	17,573,818	34,634,650	2002 - 2014	3.0

The distribution of the population among the districts is given in Appendix Table 1. Wakiso district had a population of nearly two (2) million, accounting for about six percent of the total population, while some districts were less populous, Kalangala district being the smallest with a population of 53,406 persons. As of 2016, Uganda had a total of 259 urban centres with a total urban population of 7.5 million persons. Thus, 20.2 percent of the total population lived in urban areas. Kampala Capital City was the most populous urban centre with 1.5 million persons.

Table 2 gives the distribution of the population by age. The Table shows that the population of Uganda is quite young, with the proportion of children (below 15 years of age) being 47.9 percent, while the 'Older persons' (aged 60 years and above) constituted only 2.9 percent.

Table 2: Population Distribution by Age, Sex, Residence, and Population Type, Uganda, 2014

Age	Sex		Residence		Population Type		Total
	Male	Female	Rural	Urban	Household	Institutional	
0-4	3,173,950	2,957,078	4,950,513	1,180,515	6,107,155	23,873	6,131,028
5-9	2,834,456	2,717,222	4,557,328	994,350	5,532,230	19,448	5,551,678
10-14	2,462,789	2,457,654	4,024,478	895,965	4,850,926	69,517	4,920,443
15-19	1,917,797	2,038,836	3,052,854	903,779	3,850,134	106,499	3,956,633
20-24	1,442,455	1,743,137	2,263,734	921,858	3,093,846	91,746	3,185,592
25-29	1,143,467	1,342,709	1,743,019	743,157	2,434,180	51,996	2,486,176
30-34	908,447	1,043,292	1,429,283	522,456	1,914,351	37,388	1,951,739
35-39	726,355	809,482	1,148,883	386,954	1,512,237	23,600	1,535,837
40-44	617,034	655,383	991,874	280,543	1,252,338	20,079	1,272,417
45-49	452,081	469,043	728,958	192,166	909,783	11,341	921,124
50-54	371,126	436,977	657,004	151,099	797,368	10,735	808,103
55-59	224,765	255,519	394,952	85,332	475,744	4,540	480,284
60-64	195,283	244,770	369,504	70,549	434,218	5,835	440,053
65-69	136,107	165,043	257,208	43,942	299,351	1,799	301,150
70-74	115,862	161,374	237,097	40,139	273,582	3,654	277,236
75-79	69,095	81,378	128,636	21,837	149,567	906	150,473
80-84	51,871	79,398	110,736	20,533	127,984	3,285	131,269
85-89	21,572	30,204	43,246	8,530	50,735	1,041	51,776
90-94	15,125	22,046	29,989	7,182	34,339	2,832	37,171
95and above	18,212	26,256	37,186	7,282	41,231	3,237	44,468
Total	16,897,849	17,736,801	27,156,482	7,478,168	34,141,299	493,351	34,634,650

Characteristics of the Population

About 87 percent of the boys and girls of primary school going age (6-12 years) were attending school, while about 1 in every 10 children of primary school going age children had never been school. The Illiteracy status Rate was 72 percent among persons aged 10 years and above. Out of the 17.7 million persons of working age (aged 14 to 64 years), 13.8 million (78 percent) were working in the (Labour Force), with the most common occupation being subsistence farming (65%).

Vulnerability can be assessed at personal and household level. At personal level, vulnerability is a state of being in which a person is likely to be in a risky situation, suffering significant physical, emotional, or mental harm that may result in his/her human rights not being fulfilled (MoGLSD, 2004). The 2014 Census measured some of the dimensions of Child Vulnerability. The results show high levels of vulnerability as highlighted below;

- One in every eight (12.5%) of children aged 6 – 12 Years were not in school;
- Two out of every 25 (8%) children less than 18 years of age were orphaned;
- One in every 16 (6%) of the girls aged 12 to 17 years had already given birth;
- One in every 15 (6.5%) of the girls aged 12 – 17 had ever been in a marriage union;
- Seven out of every 10 Children (70%) aged less than five years did not have a Birth certificate.

There was a general improvement in the demographics of the population with the Total Fertility Rate falling to 5.8 children per woman while the infant Mortality Rate decreased to 53 deaths per 1,000 live births. The Life Expectancy at Birth also increased to 63.3 years

Characteristics of the Households

The household population consisted of (99 percent of the total population.) The Census 2014 enumerated a total of 7.3 million households with a population of 34.1 million .This gave an Average Household Size of 4.7.

The ‘Tadooba’ remained the most common source of lighting being used by 52 percent of the households. Only one in every five households (20%) had access to electricity. On the other hand, Wood fuel was the most common fuel used for cooking, with only six percent (one in every 16) of the households using other fuels. Sanitation remains a challenge with only thirty percent of the households with unimproved toilet facilities. About 600,000 households did not have any toilet facility at all.

The majority of the households (69 percent) derived their livelihood from subsistence farming. Only 27% of the households depended on earned income. One in every nine households (11%) were having only one meal per day (for adults). Some of the households (11%) received remittances from abroad in cash or in kind. More than two thirds of the households (69%) had at least one member owning a Mobile phone. Ownership of a Mobile among persons aged 10 years and above was at 38 percent. The radio remains a dominant source of information and about 60 percent of the households owned a radio.

Housing Conditions

The housing sector recorded a general improvement. Overall, 67percent of households in Uganda resided in detached dwellings. However, nearly half (47%) households resided in

dwelling with only one room for sleeping. There was also significant improvement in the materials used for construction of the dwellings. About 44% of the households resided in dwellings constructed with permanent wall material. The equivalent shares for roof and floor were 70 and 34 percent respectively.

Agricultural Activities

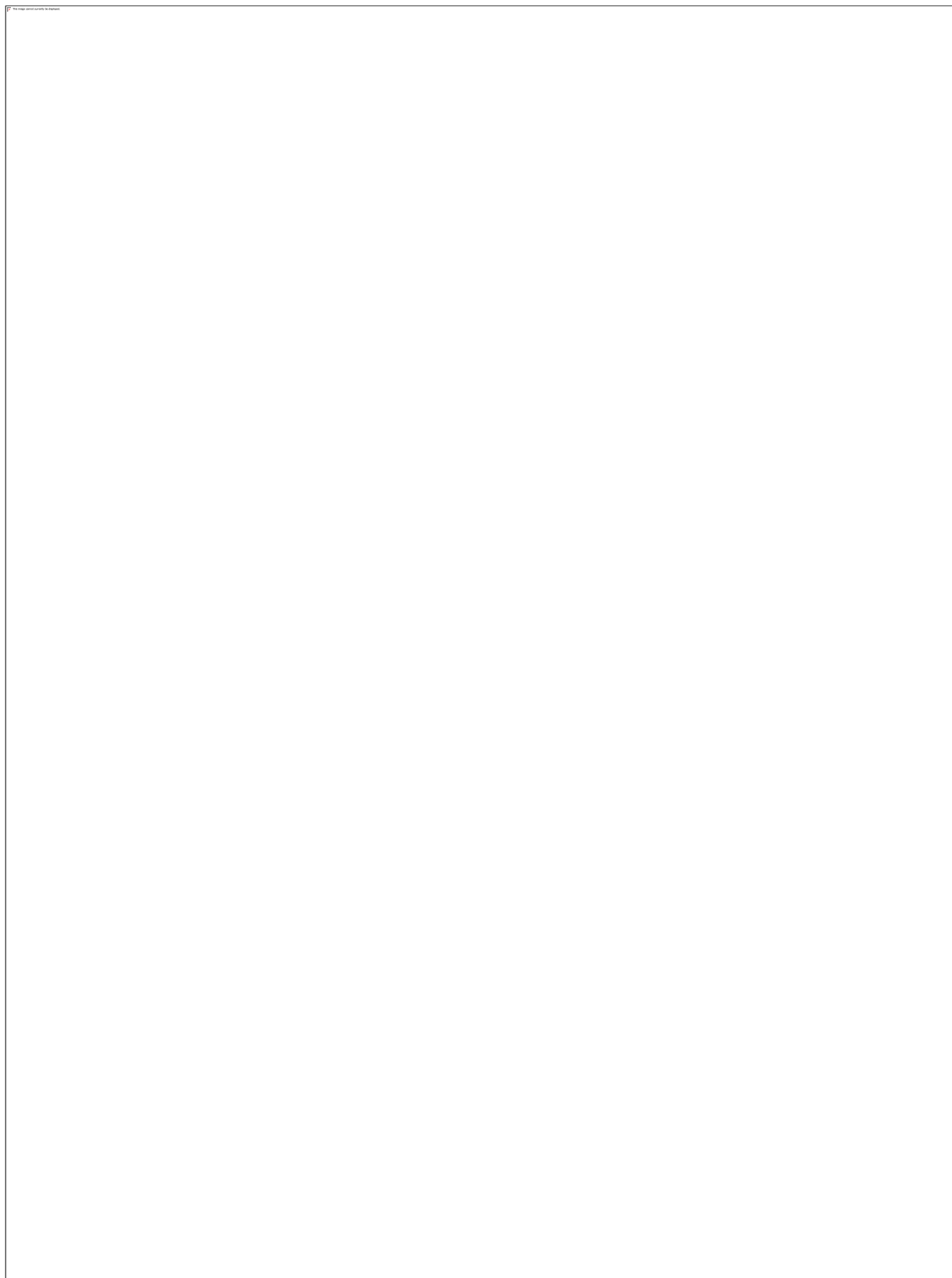
Agriculture has remained a dominant sector in the economy. The Census revealed that a total of 5.8 million households engage in agriculture. More than two thirds (69 percent) of households derived their livelihoods from subsistence farming as the main source of earning. In terms of employment, the majority of the working population (65percent) were subsistence farmers.

POPULATION SIZE

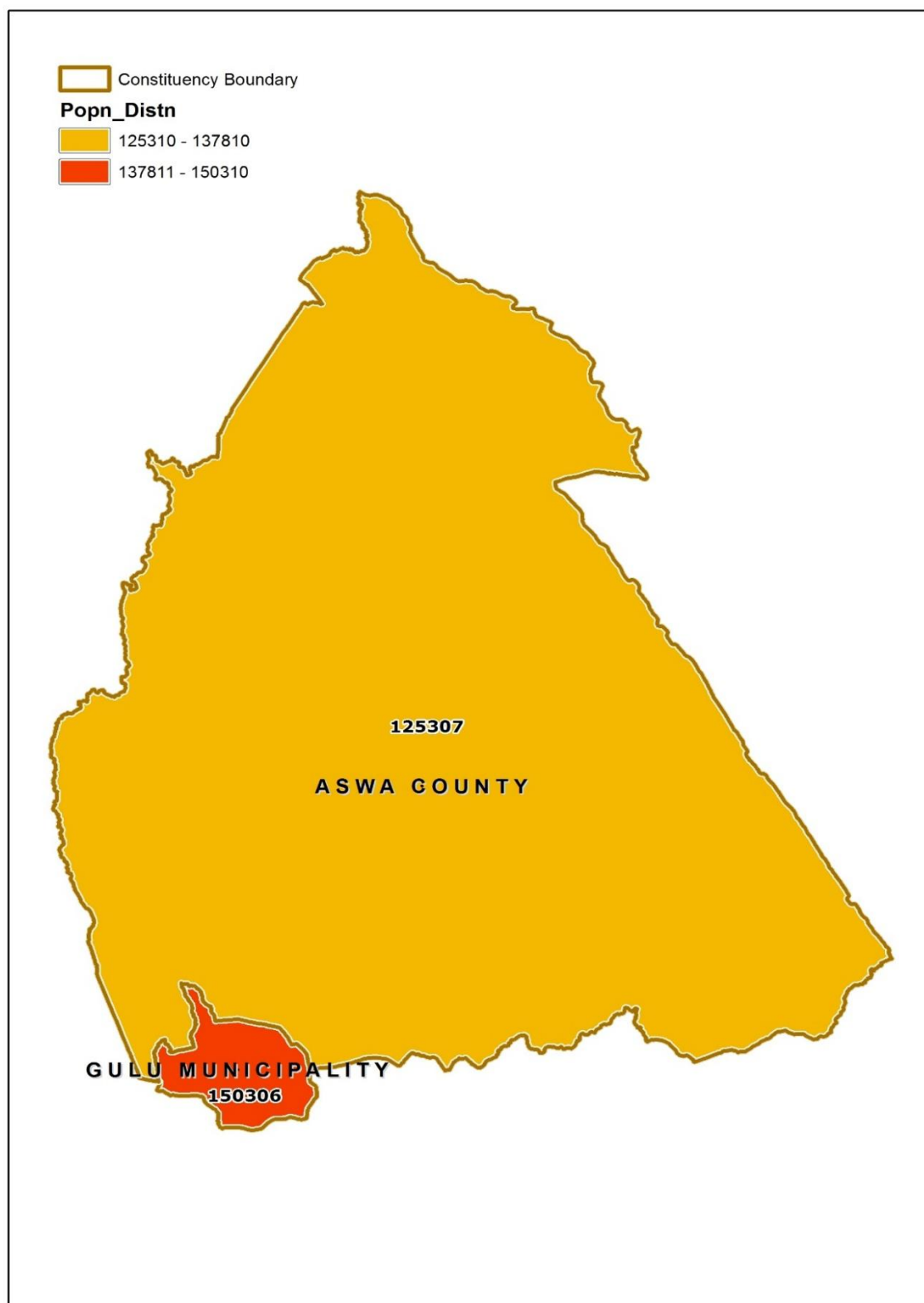
Table 3: Total population by age group and sex, Gulu District, 2014

Age group	Male	Female	Total
0-9 years	43,397	40,761	84,158
10-19 years	35,832	37,879	73,711
20-39 years	39,093	42,753	81,846
40-59 years	12,254	13,823	26,077
60 years and above	3,995	5,826	9,821
Total	134,571	141,042	275,613

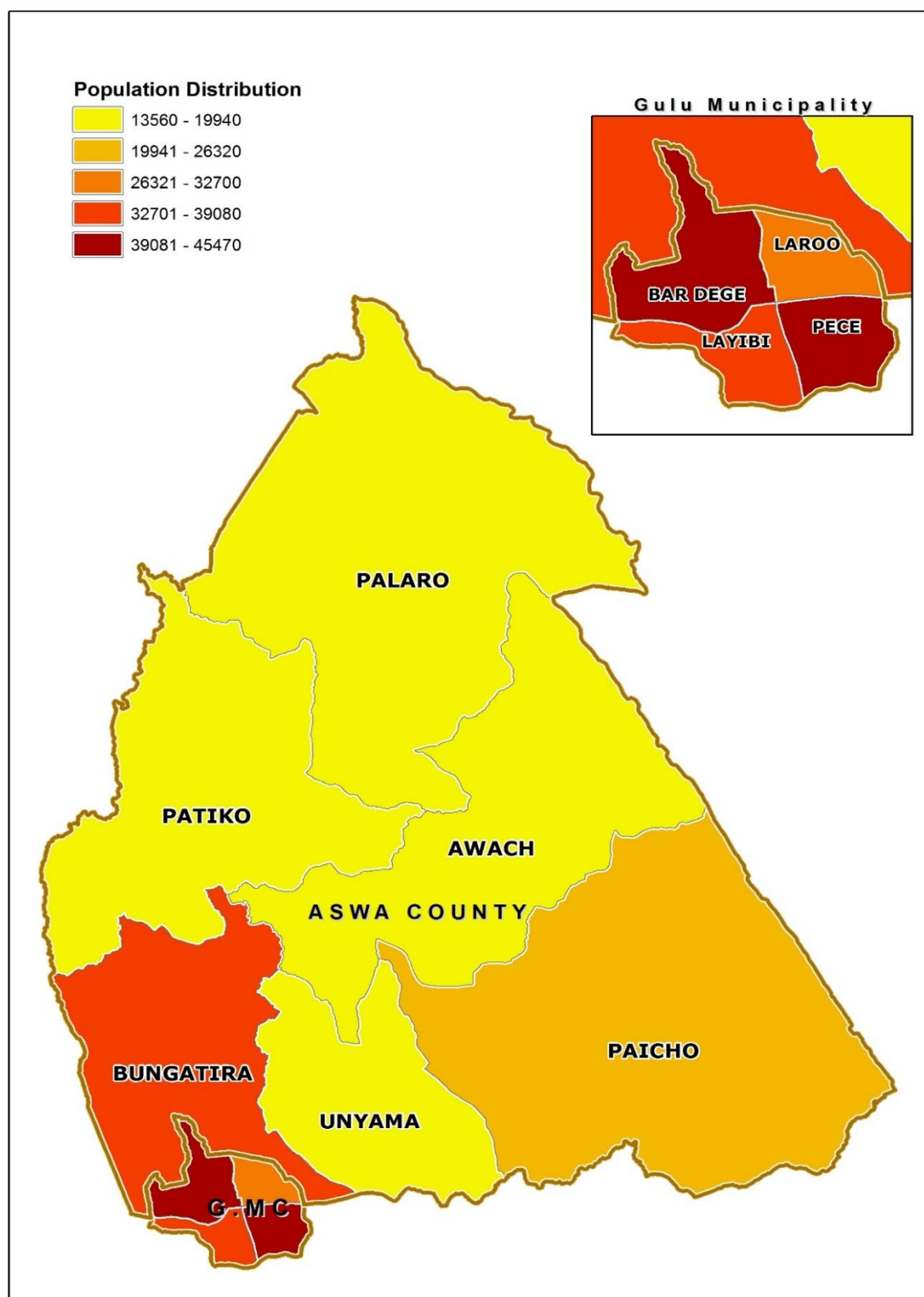
Map 1: Districts of Uganda as of 1st July 2016



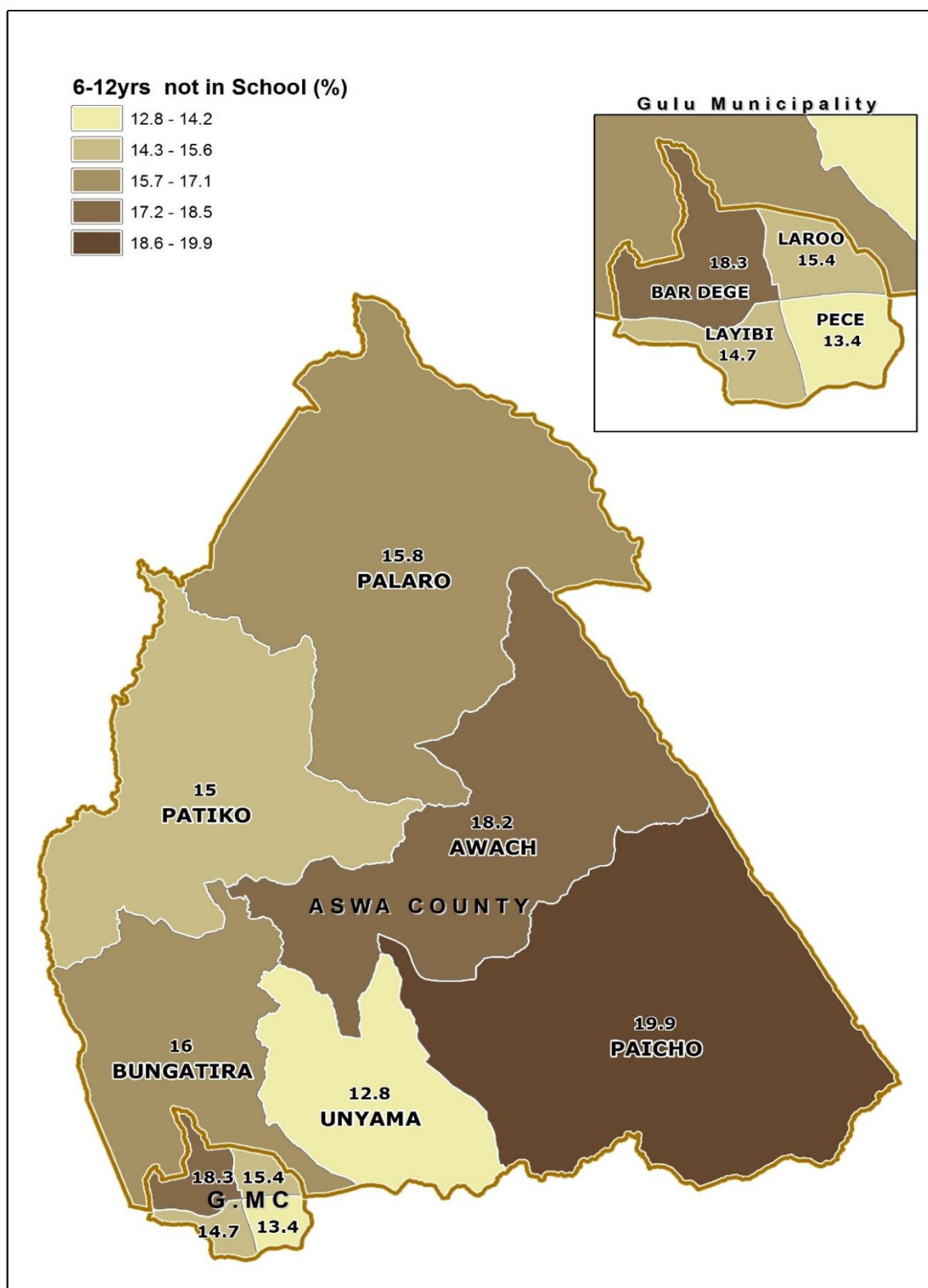
Map 2: Gulu District Parliamentary Constituencies as of 1st July, 2016



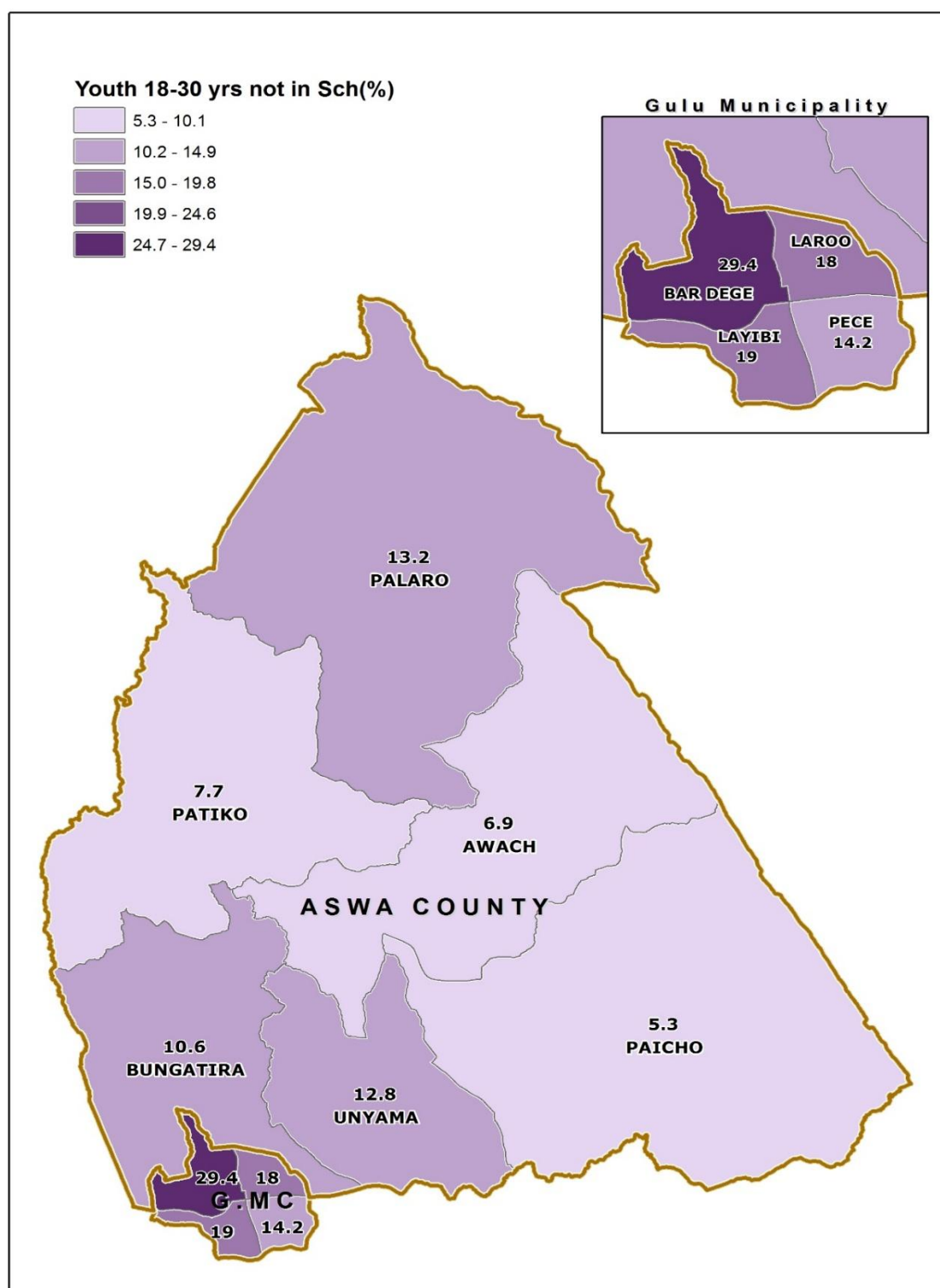
Map 3: Distribution of Population by Sub-county; Gulu District, 2014



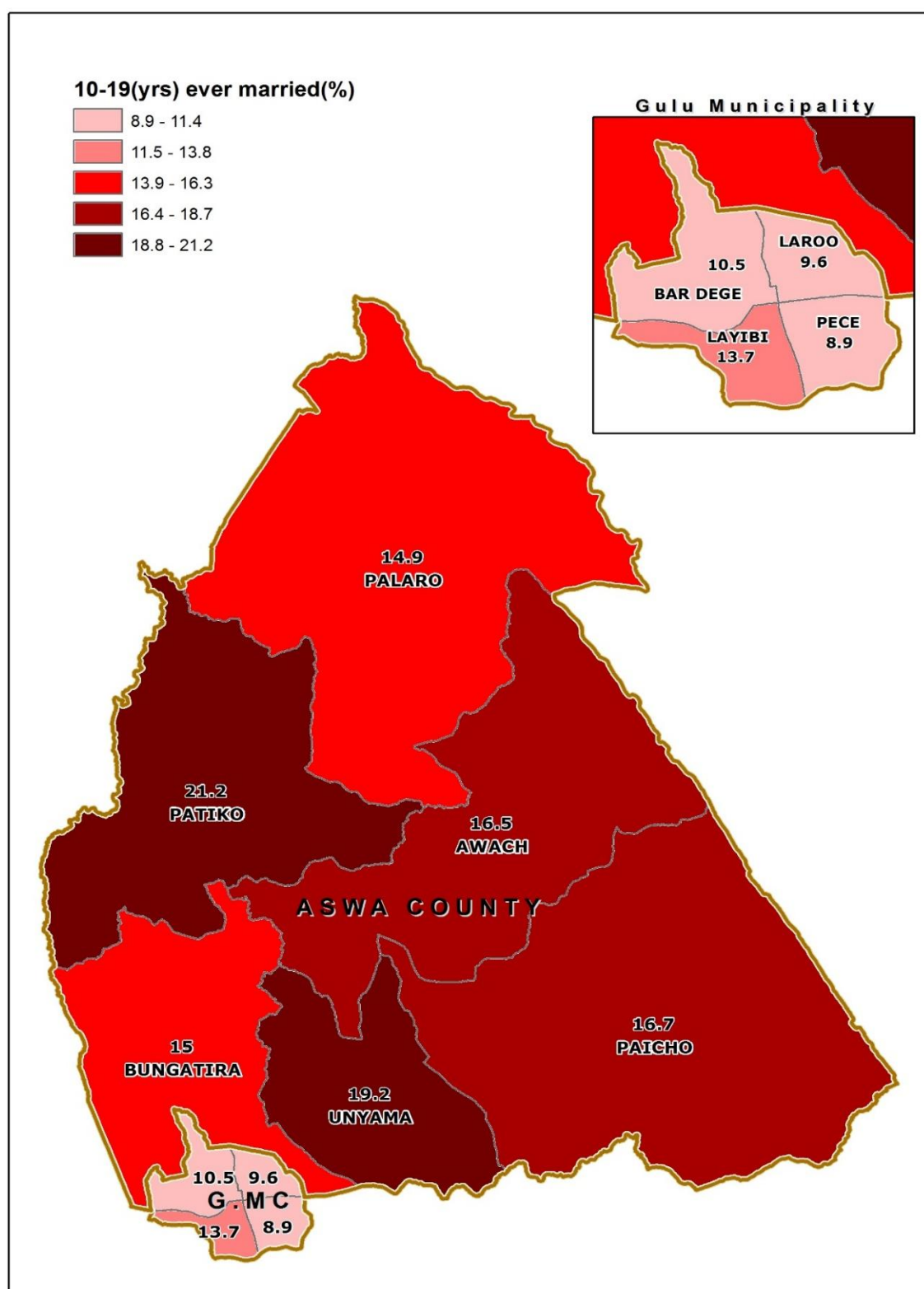
Map 4: Percentage Distribution of Population Aged 6-12 Years Not in School; Gulu District, 2014



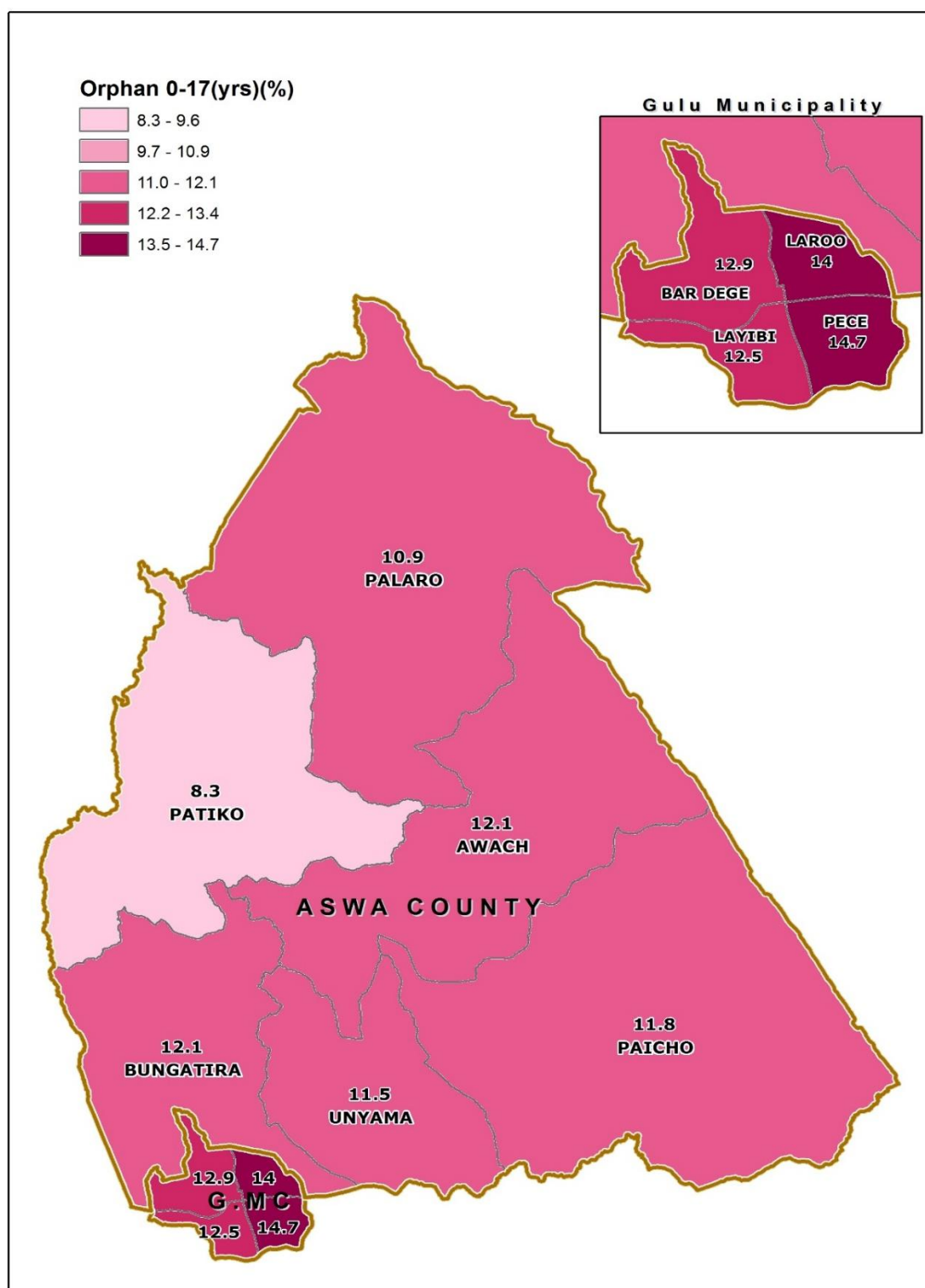
Map 5: Percentage Distribution of Youth Population aged 18-30 Years, Not in School and Not Working; Gulu District, 2014



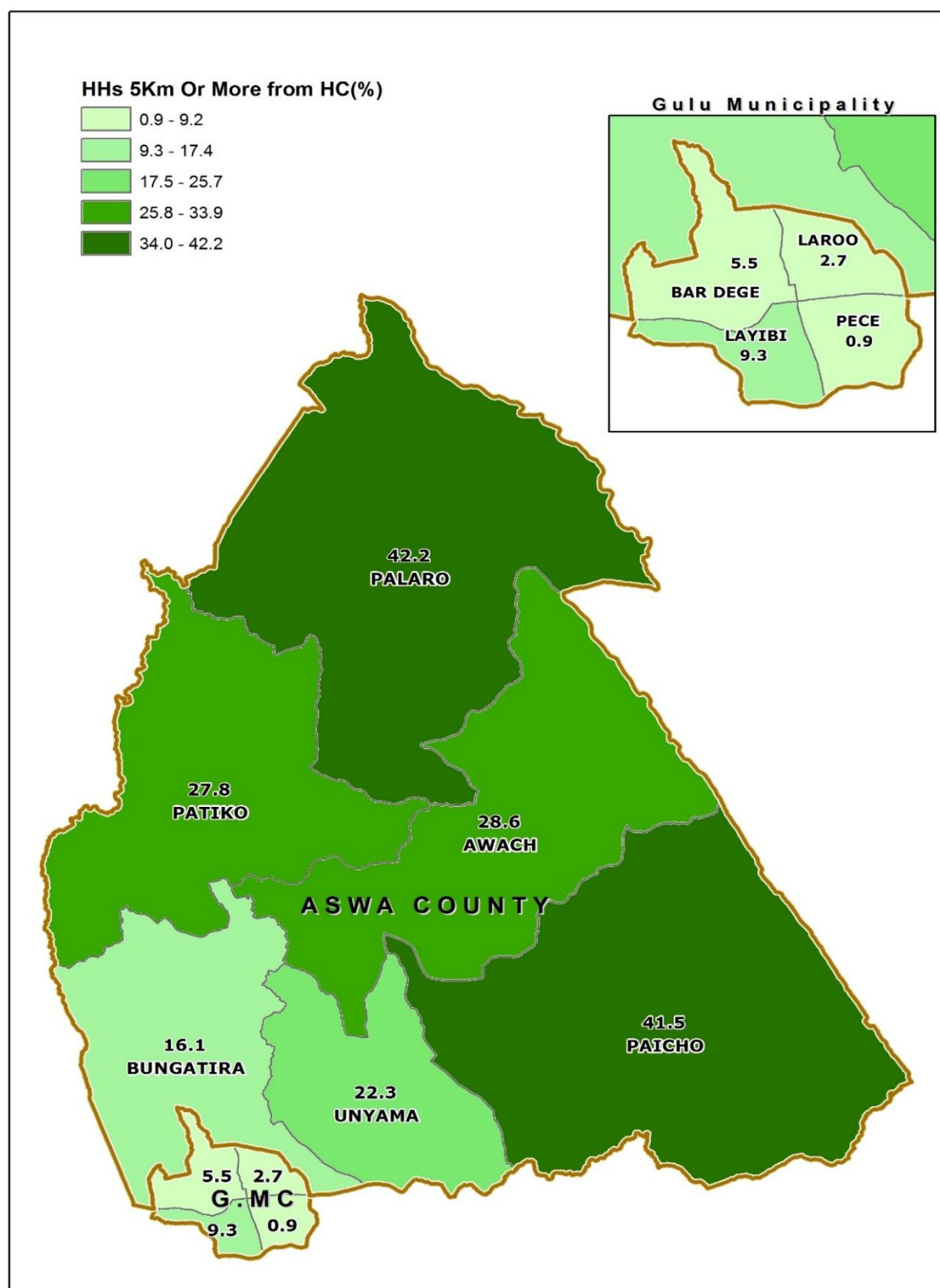
Map 6: Percentage Distribution of Population aged 10-19 Years, Ever Married; Gulu District, 2014



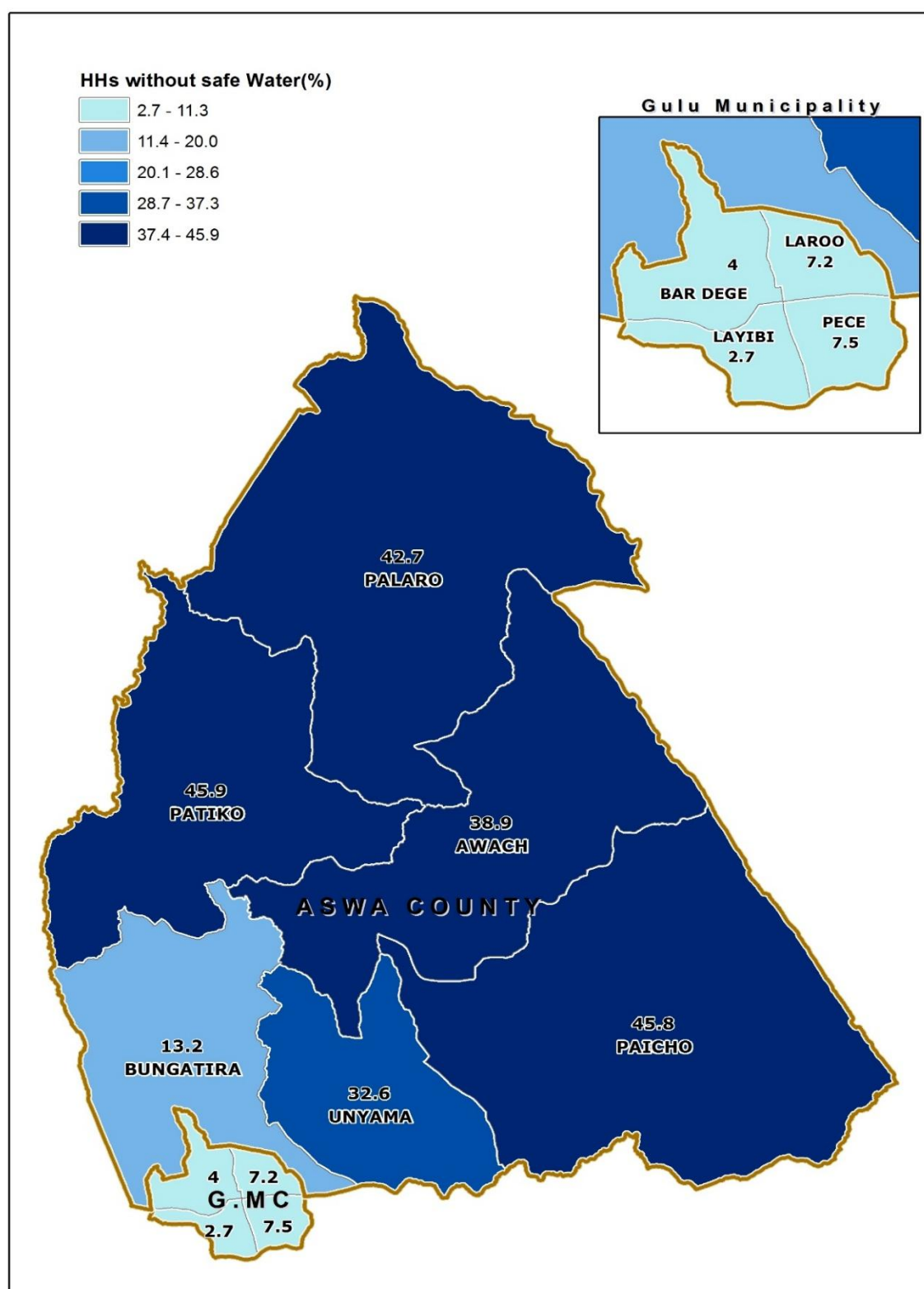
Map 7: Percentage Distribution of Orphans aged 0-17 Years; Gulu District, 2014



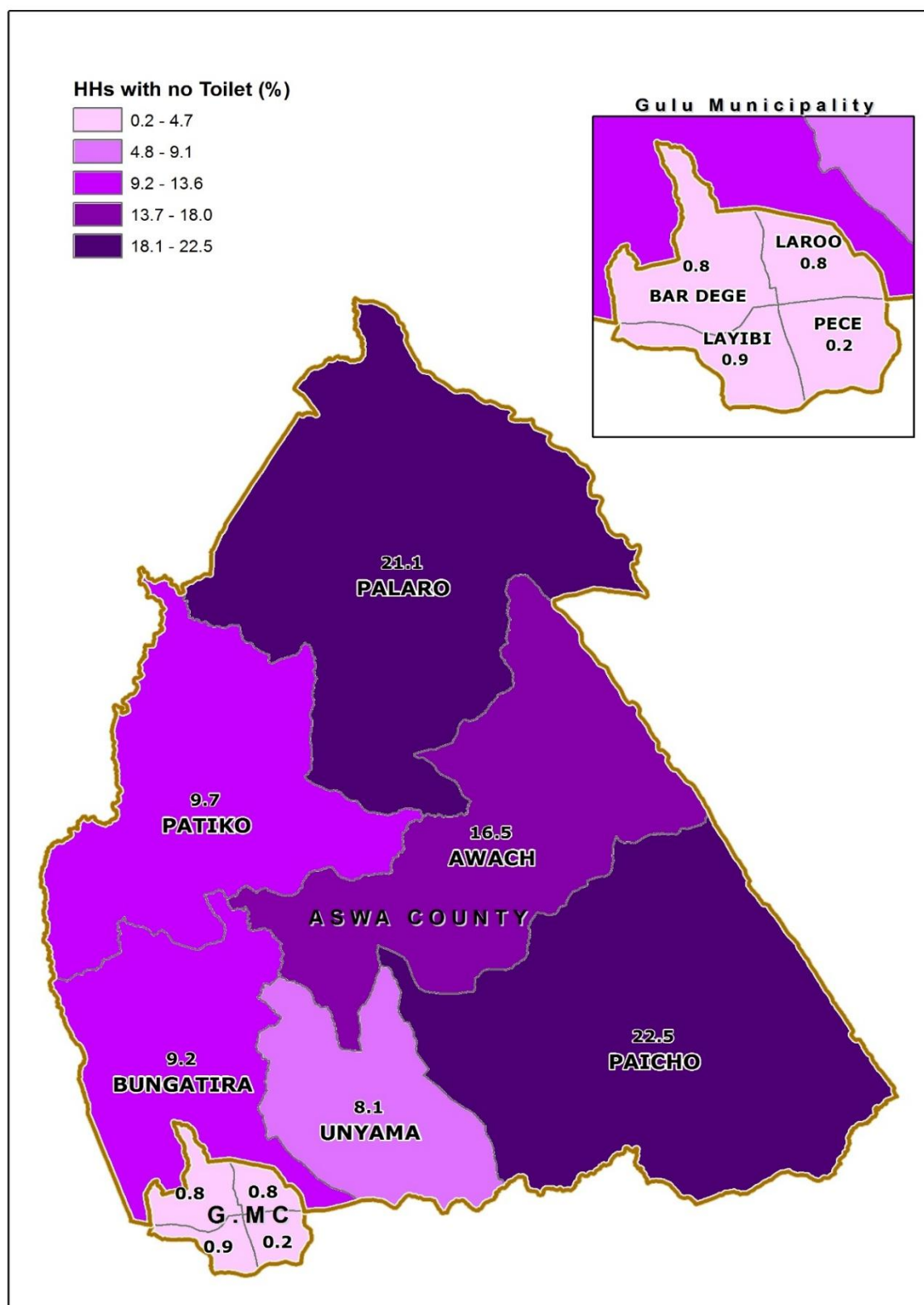
**Map 8: Percentage Distribution of Households 5 Km and Over to the nearest Public Health Facility;
Gulu District, 2014**



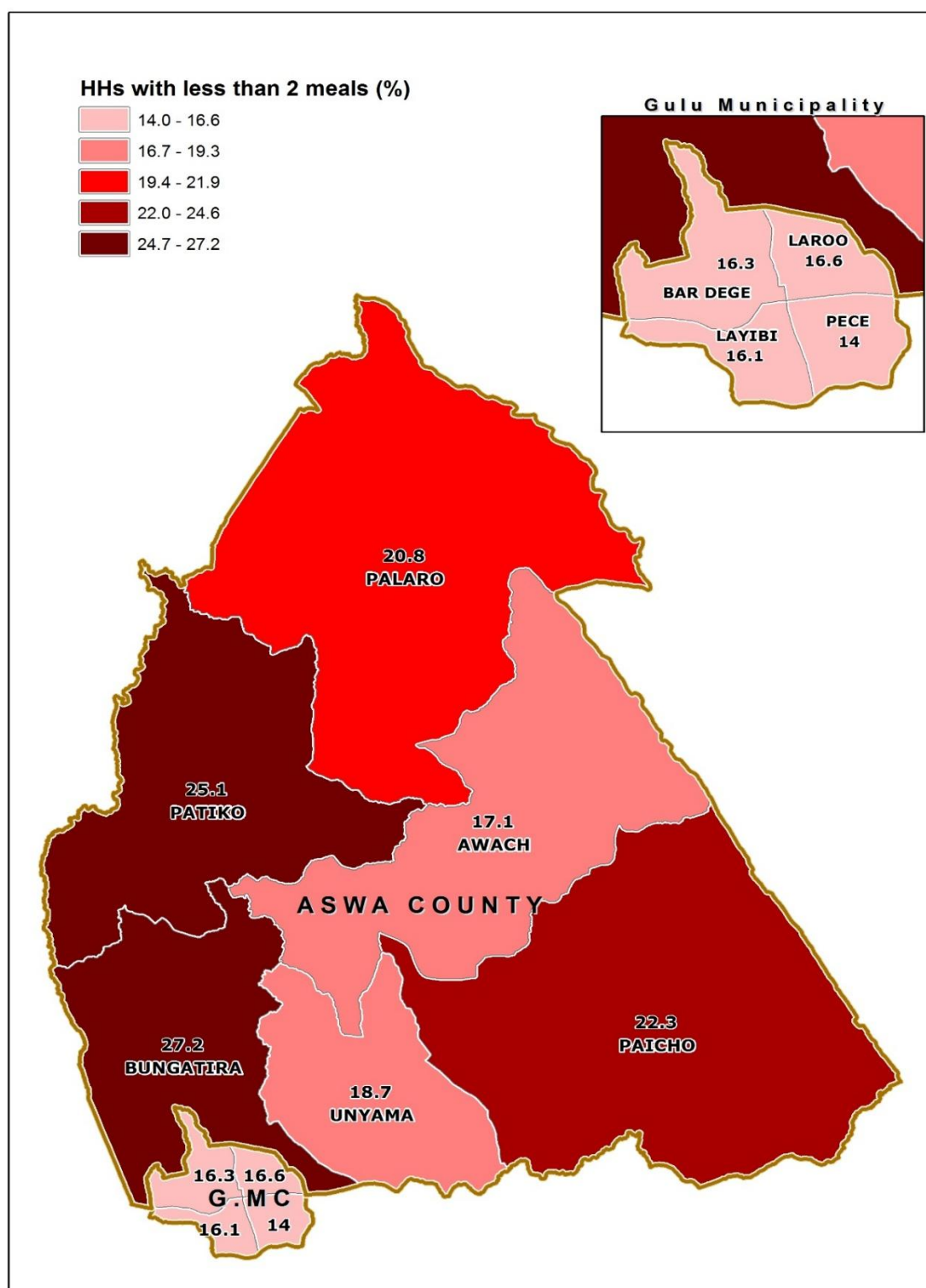
Map 9: Percentage Distribution of Households without access to Safe Water; Gulu District, 2014



Map 10: Percentage Distribution of Households with no Toilet facility; Gulu District, 2014



Map 11: Percentage Distribution of Households having less than 2 meals a day; Gulu District, 2014



AREA SPECIFIC PROFILES

GULU DISTRICT

LIST OF TABLES

- 1 Population
- 2 Education
- 3 Illiteracy status
- 4 Ownership of a Birth Certificate
- 5 Parental Survival and Orphanhood
- 6 Disability
- 7 Marriage and Child Bearing
- 8 Working Status
- 9 Use of ICT
- 10 Housing Conditions
- 11 Access to Community Services
- 12 Household Health and Hygiene
- 13 Household Assets
- 14 Other Household Characteristics
- 15 Household Based Agricultural Activities

1: POPULATION

1.1: Population Size	Number	Percent
Total population	275,613	
Total male population	134,571	48.8
Total female population	141,042	51.2
Sex ratio (males per 100 females)	95.4	
1.2: Households	Number	Percent
Total households	55,441	
Households headed by males	39,017	70.4
Households headed by females	16,424	29.6
Households headed by children (aged 10-17 years)	236	0.4
Households headed by youth (aged 18-30 years)	16,543	29.8
Households headed by older persons (aged 60 years and above)	6,916	12.5
1.3: Population by Age groups	Number	Percent
Population aged 0-17 years	142,111	53.4
Population aged 18-30 years	67,048	25.2
Population aged 31-59 years	47,694	17.9
Population aged 60 years and over	9,141	3.4
1.4: Population by Special Age groups	Number	Percent
Population aged Less than one Year	8,464	3.2
Population aged 0-4 Years	43,067	16.2
Population aged 0-8 Years	75,736	28.5
Population aged 2-8 Years	58,976	22.2
Population aged 2-17 Years	125,351	47.1
Population aged 6-12 Years	54,801	20.6
Population aged 6-15 Years	77,450	29.1
Population aged 10-15 Years	45,336	17.0
Population aged 10-17 Years	59,002	22.2
Population aged 15-24 Years	60,872	22.9
Population aged 16-64 Years	131,321	49.4
Population aged 15-29 Years	82,294	30.9
Population aged 2 Years and Over	249,234	93.7
Population aged 10 Years and Over	182,885	68.8
Population aged 15 Years and Over	144,248	54.2
Population aged 18 Years and Over	123,883	46.6
Population aged 20 Years and Over	111,321	41.9
Population aged 65 Years and over	6,228	2.3

2: EDUCATION

2.1: Non School attendance of	Number	Percent
Persons aged 6-15 years not attending school	7,158	9.2
Males aged 6-15 years not attending school	3,459	9.0
Females aged 6-15 years not attending school	3,699	9.5
2.2: Persons attending Primary school	Number	Percent
Persons aged 6-12 years attending primary school	46,481	84.8
Males aged 6-12 years attending primary school	23,413	84.4
Females aged 6-12 years attending primary school	23,068	85.2
2.3: Persons attending Secondary school	Number	Percent
Persons aged 13-18 years attending secondary school	16,354	37.7
Males aged 13-18 years attending secondary school	8,364	40.3
Females aged 13-18 years attending secondary school	7,990	35.3
2.4: Persons not in School and Highest Level Completed is below S.4	Number	Percent
Persons aged 15 years and above whose highest level of education completed is below S.4	65,445	68.5
Males aged 15 years and above whose highest level of education completed is below S.4	26,917	60.2
Females aged 15 years and above whose highest level of education completed is below S.4	38,528	75.8
2.5: Persons not in School and Highest Level Completed is "O" Level	Number	Percent
Persons aged 18 years and above whose highest level of education completed is "O" level (S.4)	10,767	8.7
Males aged 18 years and above whose highest level of education completed is "O" level (S.4)	6,126	10.9
Females aged 18 years and above whose highest level of education completed is "O" level (S.4)	4,641	6.9
2.6: Persons not in School and Highest Level Completed is "A" Level	Number	Percent
Persons aged 20 years and above whose highest level of education completed is "A" level (S.6)	4,743	4.3
Males aged 20 years and above whose highest level of education completed is "A" level (S.6)	3,279	6.5
Females aged 20 years and above whose highest level of education completed is "A" level (S.6)	1,464	2.4

3: ILLITERACY STATUS

3.1: Persons aged 18 years and above	Number	Percent
Persons aged 18 years and above who are illiterate	30,762	24.8
Males aged 18 years and above who are illiterate	7,159	12.7
Females aged 18 years and above who are illiterate	23,603	34.9
3.2: Other age groups	Number	Percent
Persons aged 10-17 years who are illiterate	15,392	26.1
Persons aged 18-30 years who are illiterate	9,860	14.7
Persons aged 60 years and above who are illiterate	5,317	58.2

4: OWNERSHIP OF A BIRTH CERTIFICATE

4.1: Children with Birth Certificates	Number	Percent
Children less than 1 year who have a Birth Certificate	2,832	33.5
Children less than 5 years who have a Birth Certificate	18,537	43.0
Children 0-8 years who have a Birth Certificate	34,058	45.0
Children 0-17 years who have a Birth Certificate	60,933	44.8

5: PARENTAL SURVIVAL AND ORPHANHOOD

5.1: Children 0-8 years	Number	Percent
Children 0-8 years who have lost one parent	4,284	5.7
Children 0-8 years who have lost both parents	425	0.6
Children 0-8 years who have lost at least a parent (total number of orphans)	4,709	6.2
Children 0-8 years who have both parents	71,027	93.8
5.2: All children (0-17 years)	Number	Percent
Children 0-17 years who have lost one parent	15,232	10.7
Children 0-17 years who have lost both parents	2,364	1.7
Children 0-17 years who have lost at least a parent (total number of orphans)	17,596	12.4
Children 0-17 years who have both parents	124,515	87.6

6: DISABILITY

6.1: Persons with a disability	Number	Percent
Persons aged 2 years and above with a disability	28,056	11.3
Persons aged 2 years and above with a seeing disability	14,166	5.7
Persons aged 2 years and above with a hearing disability	7,523	3.0
Persons aged 2 years and above with a walking disability	9,376	3.8
Persons aged 2 years and above with a remembering disability	8,747	3.5
Persons aged 2 years and above with multiple disabilities	6,874	25.2
Children aged 2-17 years with a disability	7,668	6.1
Youth aged 18-30 years with a disability	5,102	7.6
Older persons aged 60 years and above with a disability	5,336	58.4

7: MARRIAGE AND CHILDBEARING

7.1: Marital status of the population	Number	Percent
Persons aged 10 years and above who are married	43,797	44.8
Persons aged 18 years and above who are married	41,940	62.1
Females aged 50 years and above who are widowed	4,596	42.5
Females aged 10-17 years who have ever been married	2,149	7.1
Females aged 10-19 years who have ever been married	4,987	13.5
7.2: Females who have had a birth	Number	Percent
Females aged 12-17 years who have given birth	2,355	10.3
Females aged 12-19 years who have given birth	4,913	16.6

8: WORKING STATUS

8.1: Working persons	Number	Percent
Persons aged 10-15 years who were working	16,540	36.5
Persons aged 10-17 years who were working	22,501	38.1
Persons aged 18-30 years who were working	44,996	67.1
Persons aged 16-64 years who were working	95,007	72.3
Persons aged 18 years and above who were working	92,419	74.6
Persons aged 60 years and above who were working	5,606	61.3
8.2: Youths Not working and not in school		
Youths (Persons aged 18-30 years) who were neither working nor in school	8,065	12.0

9: USE OF ICT

9.1: Mobile phone ownership (10 years and above)	Number	Percent
Persons aged 10 years and above that own at least one mobile phone	79,675	43.6
Males aged 10 years and above that own at least one mobile phone	41,708	49.0
Females aged 10 years and above that own at least one mobile phone	37,967	38.8
9.2: Mobile phone ownership (18-30 years)	Number	Percent
Persons aged 18-30 years and above that own at least one mobile phone	41,199	61.4
Males aged 18-30 years and above that own at least one mobile phone	20,919	68.1
Females aged 18-30 years and above that own at least one mobile phone	20,280	55.8
9.3: Internet Usage (10 years and above)	Number	Percent
Persons aged 10 years and above that use internet	34,878	19.1
Males aged 10 years and above that use internet	21,918	25.8
Females aged 10 years and above that use internet	12,960	13.3
9.4: Internet Usage (18-30 years)	Number	Percent
Persons aged 18-30 years that use internet	20,497	30.6
Males aged 18-30 years that use internet	12,642	41.1
Females aged 18-30 years that use internet	7,855	21.6

10: HOUSING CONDITIONS

10.1: Construction Materials For the Dwelling Units	Number	Percent
Households living in dwelling units constructed using permanent roof materials	20,925	37.7
Households living in dwelling units constructed using permanent wall materials	18,458	33.3
Households living in dwelling units constructed using permanent floor materials	17,118	30.9
10.2: Status of Dwelling Units	Number	Percent
Households living in semi-permanent dwelling units	9,136	16.5
Households living in temporary dwelling units	31,294	56.4

11: ACCESS TO COMMUNITY SERVICES

11.1: Access to a Primary school	Number	Percent
Households that are 5 km or more to the nearest primary school, <u>whether public or private</u>	2,962	5.3
Households that are 5 km or more to the nearest <u>public</u> primary school	3,945	7.1
11.2: Access to a Secondary school	Number	Percent
Households that are 5 km or more to the nearest secondary school, <u>whether public or private</u>	15,723	28.4
Households that are 5 km or more to the nearest <u>public</u> secondary school	17,871	32.2
11.3: Access to a Health Facility	Number	Percent
Households that are 5 km or more to the nearest health facility, <u>whether public or private</u>	6,334	11.4
Households that are 5 km or more to the nearest <u>public</u> health facility	8,412	15.2
11.4: Access to a Police post /Police station	Number	Percent
Households that are 5 km or more to the nearest Police Post/Police Station	14,308	25.8

12: HOUSEHOLD HEALTH AND HYGIENE

12.1:Ownership of Mosquito nets	Number	Percent
Households that own at least a mosquito net	51,895	93.6
Households that own at least a mosquito net that was received free (Government /NGO)	46,663	89.9
12.2: Source Of Water For Drinking	Number	Percent
Households that have access to piped water	11,791	21.3
Households that use a bore hole	24,743	44.6
12.3:Ownership of a Toilet facility	Number	Percent
Households without any toilet facility	3,310	6.0
12.4: Other environmental conditions	Number	Percent
Households that <u>properly</u> dispose off solid waste	28,440	51.3

Households which are not living in decent dwellings	52,851	95.3
---	--------	------

13: HOUSEHOLD ASSETS

13.1: Owner occupied Dwellings	Number	Percent
Households that are owner occupied	35,777	64.5
Male headed households that are owner occupied	25,095	64.3
Female headed households that are owner occupied	10,682	65.0
13.2: Movable Assets	Number	Percent
Households that own a television	9,691	17.5
Households that own a computer	4,738	8.5
Households that own a bicycle	23,723	42.8
Households that own a radio	31,832	57.4

14: OTHER HOUSEHOLD CHARACTERISTICS

14.1: Main source of information	Number	Percent
Households whose main source of information is a radio	29,290	52.8
Households whose main source of information is a community announcer	4,236	7.6
Households whose main source of information is a telephone	6,690	12.1
14.2: Household Economy and Welfare	Number	Percent
Households that received remittances from abroad in the last 12 months	13,441	24.2
Households where any member possesses a bank account	24,152	43.6
Households that depend on subsistence farming as a main source of livelihood	27,778	50.1
Households with at least one member engaged in a non-agricultural household based enterprise	40,751	88.8
Households where (members aged 5 years and above) consume less than two meals in a day	10,383	18.7
14.3: Source of Energy for lighting	Number	Percent
Households that have access to electricity	11,776	21.2
Households that use tadooba for lighting	29,206	52.7

15: HOUSEHOLD BASED AGRICULTURAL ACTIVITIES

15.1: Household based Agricultural activities	Number	Percent
Households engaged in crop growing	35,694	64.4
Households engaged in maize growing	14,836	26.8
Households engaged in coffee growing	29	0.1
Households engaged in growing of beans	19,828	35.8
Households engaged in growing of millet	7,741	14.0
Households engaged in growing of sweet potatoes	11,908	21.5
Households engaged in growing of matooke	1,221	2.2
Households engaged livestock farming	29,947	54.0
Households engaged in either crop growing or livestock farming	39,936	72.0

GULU MUNICIPALITY CONSTITUENCY

LIST OF TABLES

- 1 Population
- 2 Education
- 3 Illiteracy status
- 4 Ownership of a Birth Certificate
- 5 Parental Survival and Orphanhood
- 6 Disability
- 7 Marriage and Child Bearing
- 8 Working Status
- 9 Use of ICT
- 10 Housing Conditions
- 11 Access to Community Services
- 12 Household Health and Hygiene
- 13 Household Assets
- 14 Other Household Characteristics
- 15 Household Based Agricultural Activities

1: POPULATION

1.1: Population Size	Number	Percent
Total population	150,306	
Total male population	73,205	48.7
Total female population	77,101	51.3
Sex ratio (males per 100 females)	94.9	
1.2: Households	Number	Percent
Total households	30,573	
Households headed by males	21,239	69.5
Households headed by females	9,334	30.5
Households headed by children (aged 10-17 years)	174	0.6
Households headed by youth (aged 18-30 years)	10,634	34.8
Households headed by older persons (aged 60 years and above)	2,624	8.6
1.3: Population by Age groups	Number	Percent
Population aged 0-17 years	69,433	49.1
Population aged 18-30 years	42,625	30.1
Population aged 31-59 years	25,660	18.1
Population aged 60 years and over	3,684	2.6
1.4: Population by Special Age groups	Number	Percent
Population aged Less than one Year	4,204	3.0
Population aged 0-4 Years	20,608	14.6
Population aged 0-8 Years	35,884	25.4
Population aged 2-8 Years	27,809	19.7
Population aged 2-17 Years	61,358	43.4
Population aged 6-12 Years	26,021	18.4
Population aged 6-15 Years	37,551	26.6
Population aged 10-15 Years	22,425	15.9
Population aged 10-17 Years	29,978	21.2
Population aged 15-24 Years	36,439	25.8
Population aged 16-64 Years	77,025	54.5
Population aged 15-29 Years	50,622	35.8
Population aged 2 Years and Over	133,327	94.3
Population aged 10 Years and Over	101,947	72.1
Population aged 15 Years and Over	83,149	58.8
Population aged 18 Years and Over	71,969	50.9
Population aged 20 Years and Over	64,602	45.7
Population aged 65 Years and over	2,497	1.8

2: EDUCATION

2.1: Non School attendance of	Number	Percent
Persons aged 6-15 years not attending school	2,596	6.9
Males aged 6-15 years not attending school	1,126	6.2
Females aged 6-15 years not attending school	1,470	7.5
2.2: Persons attending Primary school	Number	Percent
Persons aged 6-12 years attending primary school	22,436	86.2
Males aged 6-12 years attending primary school	10,979	85.7
Females aged 6-12 years attending primary school	11,457	86.7
2.3: Persons attending Secondary school	Number	Percent
Persons aged 13-18 years attending secondary school	11,570	49.9
Males aged 13-18 years attending secondary school	5,529	52.8
Females aged 13-18 years attending secondary school	6,041	47.5
2.4: Persons not in School and Highest Level Completed is below S.4	Number	Percent
Persons aged 15 years and above whose highest level of education completed is below S.4	30,293	54.6
Males aged 15 years and above whose highest level of education completed is below S.4	11,014	43.5
Females aged 15 years and above whose highest level of education completed is below S.4	19,279	64.0
2.5: Persons not in School and Highest Level Completed is "O" Level	Number	Percent
Persons aged 18 years and above whose highest level of education completed is "O" level (S.4)	8,458	11.8
Males aged 18 years and above whose highest level of education completed is "O" level (S.4)	4,490	13.6
Females aged 18 years and above whose highest level of education completed is "O" level (S.4)	3,968	10.2
2.6: Persons not in School and Highest Level Completed is "A" Level	Number	Percent
Persons aged 20 years and above whose highest level of education completed is "A" level (S.6)	4,066	6.3
Males aged 20 years and above whose highest level of education completed is "A" level (S.6)	2,727	9.1
Females aged 20 years and above whose highest level of education completed is "A" level (S.6)	1,339	3.8

3: ILLITERACY STATUS

3.1: Persons aged 18 years and above	Number	Percent
Persons aged 18 years and above who are illiterate	10,555	14.7
Males aged 18 years and above who are illiterate	2,255	6.8
Females aged 18 years and above who are illiterate	8,300	21.4
3.2: Other age groups	Number	Percent
Persons aged 10-17 years who are illiterate	5,007	16.7
Persons aged 18-30 years who are illiterate	3,839	9.0
Persons aged 60 years and above who are illiterate	1,685	45.7

4: OWNERSHIP OF A BIRTH CERTIFICATE

4.1: Children with Birth Certificates	Number	Percent
Children less than 1 year who have a Birth Certificate	1,770	42.1
Children less than 5 years who have a Birth Certificate	11,048	53.6
Children 0-8 years who have a Birth Certificate	20,381	56.8
Children 0-17 years who have a Birth Certificate	37,672	57.1

5: PARENTAL SURVIVAL AND ORPHANHOOD

5.1: Children 0-8 years	Number	Percent
Children 0-8 years who have lost one parent	2,085	5.8
Children 0-8 years who have lost both parents	230	0.6
Children 0-8 years who have lost at least a parent (total number of orphans)	2,315	6.5
Children 0-8 years who have both parents	33,569	93.5
5.2: All children (0-17 years)	Number	Percent
Children 0-17 years who have lost one parent	8,005	11.5
Children 0-17 years who have lost both parents	1,409	2.0
Children 0-17 years who have lost at least a parent (total number of orphans)	9,414	13.6
Children 0-17 years who have both parents	60,019	86.4

6: DISABILITY

6.1: Persons with a disability	Number	Percent
Persons aged 2 years and above with a disability	12,565	9.4
Persons aged 2 years and above with a seeing disability	7,025	5.3
Persons aged 2 years and above with a hearing disability	3,009	2.3
Persons aged 2 years and above with a walking disability	4,033	3.0
Persons aged 2 years and above with a remembering disability	3,273	2.5
Persons aged 2 years and above with multiple disabilities	2,868	23.4
Children aged 2-17 years with a disability	3,209	5.2
Youth aged 18-30 years with a disability	2,774	6.5
Older persons aged 60 years and above with a disability	2,025	55.0

7: MARRIAGE AND CHILDBEARING

7.1: Marital status of the population	Number	Percent
Persons aged 10 years and above who are married	22,998	41.9
Persons aged 18 years and above who are married	22,247	57.3
Females aged 50 years and above who are widowed	1,939	42.8
Females aged 10-17 years who have ever been married	884	5.5
Females aged 10-19 years who have ever been married	2,133	10.6
7.2: Females who have had a birth	Number	Percent
Females aged 12-17 years who have given birth	1,388	11.1
Females aged 12-19 years who have given birth	2,685	16.2

8: WORKING STATUS

8.1: Working persons	Number	Percent
Persons aged 10-15 years who were working	2,966	13.2
Persons aged 10-17 years who were working	4,615	15.4
Persons aged 18-30 years who were working	24,124	56.6
Persons aged 16-64 years who were working	48,091	62.4
Persons aged 18 years and above who were working	47,460	65.9
Persons aged 60 years and above who were working	1,810	49.1
8.2: Youths Not working and not in school		
Youths (Persons aged 18-30 years) who were neither working nor in school	6,120	14.4

9: USE OF ICT

9.1: Mobile phone ownership (10 years and above)	Number	Percent
Persons aged 10 years and above that own at least one mobile phone	59,022	57.9
Males aged 10 years and above that own at least one mobile phone	29,238	62.2
Females aged 10 years and above that own at least one mobile phone	29,784	54.2
9.2: Mobile phone ownership (18-30 years)	Number	Percent
Persons aged 18-30 years and above that own at least one mobile phone	31,705	74.4
Males aged 18-30 years and above that own at least one mobile phone	15,220	78.3
Females aged 18-30 years and above that own at least one mobile phone	16,485	71.1
9.3: Internet Usage (10 years and above)	Number	Percent
Persons aged 10 years and above that use internet	29,647	29.1
Males aged 10 years and above that use internet	18,038	38.4
Females aged 10 years and above that use internet	11,609	21.1
9.4: Internet Usage (18-30 years)	Number	Percent
Persons aged 18-30 years that use internet	17,488	41.0
Males aged 18-30 years that use internet	10,366	53.3
Females aged 18-30 years that use internet	7,122	30.7

10: HOUSING CONDITIONS

10.1: Construction Materials For the Dwelling Units	Number	Percent
Households living in dwelling units constructed using permanent roof materials	17,683	57.8
Households living in dwelling units constructed using permanent wall materials	16,261	53.2
Households living in dwelling units constructed using permanent floor materials	15,363	50.3
10.2: Status of Dwelling Units	Number	Percent
Households living in semi-permanent dwelling units	6,110	20.0
Households living in temporary dwelling units	10,710	35.0

11: ACCESS TO COMMUNITY SERVICES

11.1: Access to a Primary school	Number	Percent
Households that are 5 km or more to the nearest primary school, <u>whether public or private</u>	173	0.6
Households that are 5 km or more to the nearest <u>public</u> primary school	408	1.3
11.2: Access to a Secondary school	Number	Percent
Households that are 5 km or more to the nearest secondary school, <u>whether public or private</u>	550	1.8
Households that are 5 km or more to the nearest <u>public</u> secondary school	1,640	5.4
11.3: Access to a Health Facility	Number	Percent
Households that are 5 km or more to the nearest health facility, <u>whether public or private</u>	245	0.8
Households that are 5 km or more to the nearest <u>public</u> health facility	1,391	4.5
11.4: Access to a Police post /Police station	Number	Percent
Households that are 5 km or more to the nearest Police Post/Police Station	759	2.5

12: HOUSEHOLD HEALTH AND HYGIENE

12.1:Ownership of Mosquito nets	Number	Percent
Households that own at least a mosquito net	28,570	93.4
Households that own at least a mosquito net that was received free (Government /NGO)	23,869	83.5
12.2: Source Of Water For Drinking	Number	Percent
Households that have access to piped water	10,721	35.1
Households that use a bore hole	13,498	44.2
12.3:Ownership of a Toilet facility	Number	Percent
Households without any toilet facility	114	0.4
12.4: Other environmental conditions	Number	Percent
Households that <u>properly</u> dispose off solid waste	19,380	63.4
Households which are not living in decent dwellings	28,176	92.2

13: HOUSEHOLD ASSETS

13.1: Owner occupied Dwellings	Number	Percent
Households that are owner occupied	12,843	42.0
Male headed households that are owner occupied	8,579	40.4
Female headed households that are owner occupied	4,264	45.7
13.2: Movable Assets	Number	Percent
Households that own a television	8,998	29.4
Households that own a computer	4,366	14.3
Households that own a bicycle	11,866	38.8
Households that own a radio	19,989	65.4

14: OTHER HOUSEHOLD CHARACTERISTICS

14.1: Main source of information	Number	Percent
Households whose main source of information is a radio	17,472	57.1
Households whose main source of information is a community announcer	842	2.8
Households whose main source of information is a telephone	4,448	14.5
14.2: Household Economy and Welfare	Number	Percent
Households that received remittances from abroad in the last 12 months	7,471	24.4
Households where any member possesses a bank account	18,887	61.8
Households that depend on subsistence farming as a main source of livelihood	6,023	19.7
Households with at least one member engaged in a non-agricultural household based enterprise	22,782	84.4
Households where (members aged 5 years and above) consume less than two meals in a day	4,772	15.6
14.3: Source of Energy for lighting	Number	Percent
Households that have access to electricity	10,438	34.1
Households that use tadooba for lighting	9,579	31.3

15: HOUSEHOLD BASED AGRICULTURAL ACTIVITIES

15.1: Household based Agricultural activities	Number	Percent
Households engaged in crop growing	12,935	42.3
Households engaged in maize growing	5,450	17.8
Households engaged in coffee growing	24	0.1
Households engaged in growing of beans	6,762	22.1
Households engaged in growing of millet	1,570	5.1
Households engaged in growing of sweet potatoes	5,492	18.0
Households engaged in growing of matooke	698	2.3
Households engaged livestock farming	10,161	33.2
Households engaged in either crop growing or livestock farming	16,222	53.1

ASWA COUNTY CONSTITUENCY

LIST OF TABLES

- | | |
|----|---|
| 1 | Population |
| 2 | Education |
| 3 | Illiteracy status |
| 4 | Ownership of a Birth Certificate |
| 5 | Parental Survival and Orphanhood |
| 6 | Disability |
| 7 | Marriage and Child Bearing |
| 8 | Working Status |
| 9 | Use of ICT |
| 10 | Housing Conditions |
| 11 | Access to Community Services |
| 12 | Household Health and Hygiene |
| 13 | Household Assets |
| 14 | Other Household Characteristics |
| 15 | Household Based Agricultural Activities |

1: POPULATION

1.1: Population Size	Number	Percent
Total population	125,307	
Total male population	61,366	49.0
Total female population	63,941	51.0
Sex ratio (males per 100 females)	96.0	
1.2: Households	Number	Percent
Total households	24,868	
Households headed by males	17,778	71.5
Households headed by females	7,090	28.5
Households headed by children (aged 10-17 years)	62	0.2
Households headed by youth (aged 18-30 years)	5,909	23.8
Households headed by older persons (aged 60 years and above)	4,292	17.3
1.3: Population by Age groups	Number	Percent
Population aged 0-17 years	72,678	58.3
Population aged 18-30 years	24,423	19.6
Population aged 31-59 years	22,034	17.7
Population aged 60 years and over	5,457	4.4
1.4: Population by Special Age groups	Number	Percent
Population aged Less than one Year	4,260	3.4
Population aged 0-4 Years	22,459	18.0
Population aged 0-8 Years	39,852	32.0
Population aged 2-8 Years	31,167	25.0
Population aged 2-17 Years	63,993	51.4
Population aged 6-12 Years	28,780	23.1
Population aged 6-15 Years	39,899	32.0
Population aged 10-15 Years	22,911	18.4
Population aged 10-17 Years	29,024	23.3
Population aged 15-24 Years	24,433	19.6
Population aged 16-64 Years	54,296	43.6
Population aged 15-29 Years	31,672	25.4
Population aged 2 Years and Over	115,907	93.0
Population aged 10 Years and Over	80,938	65.0
Population aged 15 Years and Over	61,099	49.0
Population aged 18 Years and Over	51,914	41.7
Population aged 20 Years and Over	46,719	37.5
Population aged 65 Years and over	3,731	3.0

2: EDUCATION

2.1: Non School attendance of	Number	Percent
Persons aged 6-15 years not attending school	4,562	11.4
Males aged 6-15 years not attending school	2,333	11.3
Females aged 6-15 years not attending school	2,229	11.5
2.2: Persons attending Primary school	Number	Percent
Persons aged 6-12 years attending primary school	24,045	83.5
Males aged 6-12 years attending primary school	12,434	83.3
Females aged 6-12 years attending primary school	11,611	83.8
2.3: Persons attending Secondary school	Number	Percent
Persons aged 13-18 years attending secondary school	4,784	23.7
Males aged 13-18 years attending secondary school	2,835	27.5
Females aged 13-18 years attending secondary school	1,949	19.6
2.4: Persons not in School and Highest Level Completed is below S.4	Number	Percent
Persons aged 15 years and above whose highest level of education completed is below S.4	35,152	87.8
Males aged 15 years and above whose highest level of education completed is below S.4	15,903	82.0
Females aged 15 years and above whose highest level of education completed is below S.4	19,249	93.2
2.5: Persons not in School and Highest Level Completed is "O" Level	Number	Percent
Persons aged 18 years and above whose highest level of education completed is "O" level (S.4)	2,309	4.4
Males aged 18 years and above whose highest level of education completed is "O" level (S.4)	1,636	7.1
Females aged 18 years and above whose highest level of education completed is "O" level (S.4)	673	2.3
2.6: Persons not in School and Highest Level Completed is "A" Level	Number	Percent
Persons aged 20 years and above whose highest level of education completed is "A" level (S.6)	677	1.4
Males aged 20 years and above whose highest level of education completed is "A" level (S.6)	552	2.7
Females aged 20 years and above whose highest level of education completed is "A" level (S.6)	125	0.5

3: ILLITERACY STATUS

3.1: Persons aged 18 years and above	Number	Percent
Persons aged 18 years and above who are illiterate	20,207	38.9
Males aged 18 years and above who are illiterate	4,904	21.2
Females aged 18 years and above who are illiterate	15,303	53.3
3.2: Other age groups	Number	Percent
Persons aged 10-17 years who are illiterate	10,385	35.8
Persons aged 18-30 years who are illiterate	6,021	24.7
Persons aged 60 years and above who are illiterate	3,632	66.6

4: OWNERSHIP OF A BIRTH CERTIFICATE

4.1: Children with Birth Certificates	Number	Percent
Children less than 1 year who have a Birth Certificate	1,062	24.9
Children less than 5 years who have a Birth Certificate	7,489	33.3
Children 0-8 years who have a Birth Certificate	13,677	34.3
Children 0-17 years who have a Birth Certificate	23,261	33.3

5: PARENTAL SURVIVAL AND ORPHANHOOD

5.1: Children 0-8 years	Number	Percent
Children 0-8 years who have lost one parent	2,199	5.5
Children 0-8 years who have lost both parents	195	0.5
Children 0-8 years who have lost at least a parent (total number of orphans)	2,394	6.0
Children 0-8 years who have both parents	37,458	94.0
5.2: All children (0-17 years)	Number	Percent
Children 0-17 years who have lost one parent	7,227	9.9
Children 0-17 years who have lost both parents	955	1.3
Children 0-17 years who have lost at least a parent (total number of orphans)	8,182	11.3
Children 0-17 years who have both parents	64,496	88.7

6: DISABILITY

6.1: Persons with a disability	Number	Percent
Persons aged 2 years and above with a disability	15,491	13.4
Persons aged 2 years and above with a seeing disability	7,141	6.2
Persons aged 2 years and above with a hearing disability	4,514	3.9
Persons aged 2 years and above with a walking disability	5,343	4.6
Persons aged 2 years and above with a remembering disability	5,474	4.7
Persons aged 2 years and above with multiple disabilities	4,006	26.7
Children aged 2-17 years with a disability	4,459	7.0
Youth aged 18-30 years with a disability	2,328	9.5
Older persons aged 60 years and above with a disability	3,311	60.7

7: MARRIAGE AND CHILDBEARING

7.1: Marital status of the population	Number	Percent
Persons aged 10 years and above who are married	20,799	48.6
Persons aged 18 years and above who are married	19,693	68.5
Females aged 50 years and above who are widowed	2,657	42.4
Females aged 10-17 years who have ever been married	1,265	9.0
Females aged 10-19 years who have ever been married	2,854	17.0
7.2: Females who have had a birth	Number	Percent
Females aged 12-17 years who have given birth	967	9.3
Females aged 12-19 years who have given birth	2,228	17.1

8: WORKING STATUS

8.1: Working persons	Number	Percent
Persons aged 10-15 years who were working	13,574	59.2
Persons aged 10-17 years who were working	17,886	61.6
Persons aged 18-30 years who were working	20,872	85.5
Persons aged 16-64 years who were working	46,916	86.4
Persons aged 18 years and above who were working	44,959	86.6
Persons aged 60 years and above who were working	3,796	69.6
8.2: Youths Not working and not in school		
Youths (Persons aged 18-30 years) who were neither working nor in school	1,945	8.0

9: USE OF ICT

9.1: Mobile phone ownership (10 years and above)	Number	Percent
Persons aged 10 years and above that own at least one mobile phone	20,653	25.5
Males aged 10 years and above that own at least one mobile phone	12,470	32.7
Females aged 10 years and above that own at least one mobile phone	8,183	19.1
9.2: Mobile phone ownership (18-30 years)	Number	Percent
Persons aged 18-30 years and above that own at least one mobile phone	9,494	38.9
Males aged 18-30 years and above that own at least one mobile phone	5,699	50.5
Females aged 18-30 years and above that own at least one mobile phone	3,795	28.9
9.3: Internet Usage (10 years and above)	Number	Percent
Persons aged 10 years and above that use internet	5,231	6.5
Males aged 10 years and above that use internet	3,880	10.2
Females aged 10 years and above that use internet	1,351	3.2
9.4: Internet Usage (18-30 years)	Number	Percent
Persons aged 18-30 years that use internet	3,009	12.3
Males aged 18-30 years that use internet	2,276	20.2
Females aged 18-30 years that use internet	733	5.6

10: HOUSING CONDITIONS

10.1: Construction Materials For the Dwelling Units	Number	Percent
Households living in dwelling units constructed using permanent roof materials	3,242	13.0
Households living in dwelling units constructed using permanent wall materials	2,197	8.8
Households living in dwelling units constructed using permanent floor materials	1,755	7.1
10.2: Status of Dwelling Units	Number	Percent
Households living in semi-permanent dwelling units	3,026	12.2
Households living in temporary dwelling units	20,584	82.8

11: ACCESS TO COMMUNITY SERVICES

11.1: Access to a Primary school	Number	Percent
Households that are 5 km or more to the nearest primary school, <u>whether public or private</u>	2,789	11.2
Households that are 5 km or more to the nearest <u>public</u> primary school	3,537	14.2
11.2: Access to a Secondary school	Number	Percent
Households that are 5 km or more to the nearest secondary school, <u>whether public or private</u>	15,173	61.0
Households that are 5 km or more to the nearest <u>public</u> secondary school	16,231	65.3
11.3: Access to a Health Facility	Number	Percent
Households that are 5 km or more to the nearest health facility, <u>whether public or private</u>	6,089	24.5
Households that are 5 km or more to the nearest <u>public</u> health facility	7,021	28.2
11.4: Access to a Police post /Police station	Number	Percent
Households that are 5 km or more to the nearest Police Post/Police Station	13,549	54.5

12: HOUSEHOLD HEALTH AND HYGIENE

12.1: Ownership of Mosquito nets	Number	Percent
Households that own at least a mosquito net	23,325	93.8
Households that own at least a mosquito net that was received free (Government /NGO)	22,794	97.7
12.2: Source Of Water For Drinking	Number	Percent
Households that have access to piped water	1,070	4.3
Households that use a bore hole	11,245	45.2
12.3: Ownership of a Toilet facility	Number	Percent
Households without any toilet facility	3,196	12.9
12.4: Other environmental conditions	Number	Percent
Households that <u>properly</u> dispose off solid waste	9,060	36.4
Households which are not living in decent dwellings	24,675	99.2

13: HOUSEHOLD ASSETS

13.1: Owner occupied Dwellings	Number	Percent
Households that are owner occupied	22,934	92.2
Male headed households that are owner occupied	16,516	92.9
Female headed households that are owner occupied	6,418	90.5
13.2: Movable Assets	Number	Percent
Households that own a television	693	2.8
Households that own a computer	372	1.5
Households that own a bicycle	11,857	47.7
Households that own a radio	11,843	47.6

14: OTHER HOUSEHOLD CHARACTERISTICS

14.1: Main source of information	Number	Percent
Households whose main source of information is a radio	11,818	47.5
Households whose main source of information is a community announcer	3,394	13.6
Households whose main source of information is a telephone	2,242	9.0
14.2: Household Economy and Welfare	Number	Percent
Households that received remittances from abroad in the last 12 months	5,970	24.0
Households where any member possesses a bank account	5,265	21.2
Households that depend on subsistence farming as a main source of livelihood	21,755	87.5
Households with at least one member engaged in a non-agricultural household based enterprise	17,969	95.0
Households where (members aged 5 years and above) consume less than two meals in a day	5,611	22.6
14.3: Source of Energy for lighting	Number	Percent
Households that have access to electricity	1,338	5.4
Households that use tadooba for lighting	19,627	78.9

15: HOUSEHOLD BASED AGRICULTURAL ACTIVITIES

15.1: Household based Agricultural activities	Number	Percent
Households engaged in crop growing	22,759	91.5
Households engaged in maize growing	9,386	37.7
Households engaged in coffee growing	5	0.0
Households engaged in growing of beans	13,066	52.5
Households engaged in growing of millet	6,171	24.8
Households engaged in growing of sweet potatoes	6,416	25.8
Households engaged in growing of matooke	523	2.1
Households engaged livestock farming	19,786	79.6
Households engaged in either crop growing or livestock farming	23,714	95.4

APPENDICES

Appendix 1: Population by Sex and Type of Residence by District, Uganda 2014

Central	Male	Female	Urban	Rural	Total
Buikwe	207,324	215,447	299,628	123,143	422,771
Bukomansimbi	75,109	76,304	12,797	138,616	151,413
Butambala	50,082	50,758	15,553	85,287	100,840
Buvuma	48,414	41,476	9,935	79,955	89,890
Gomba	82,167	77,755	12,439	147,483	159,922
Kalangala	31,349	22,944	4,980	49,313	54,293
Kalungu	89,679	93,553	37,094	146,138	183,232
Kampala	712,762	794,318	1,507,080	0	1,507,080
Kayunga	180,706	187,356	27,061	341,001	368,062
Kiboga	75,847	72,371	33,520	114,698	148,218
Kyankwanzi	111,539	103,154	30,621	184,072	214,693
Luwero	226,805	230,153	95,749	361,209	456,958
Lwengo	133,474	141,479	42,919	232,034	274,953
Lyantonde	46,714	47,039	13,823	79,930	93,753
Masaka	145,552	151,452	103,227	193,777	297,004
Mityana	165,717	163,247	107,645	221,319	328,964
Mpigi	125,404	125,144	43,360	207,188	250,548
Mubende	346,654	337,694	113,803	570,545	684,348
Mukono	289,757	307,047	162,710	434,094	596,804
Nakaseke	104,795	92,578	39,397	157,976	197,373
Nakasongola	93,323	88,472	24,667	157,128	181,795
Rakai	254,366	261,943	34,041	482,268	516,309
Ssembabule	126,084	126,513	16,949	235,648	252,597
Wakiso	949,035	1,048,383	1,681,449	315,969	1,997,418

Eastern	Male	Female	Urban	Rural	Total
Amuria	132,521	138,407	17,385	253,543	270,928
Budaka	100,620	106,977	23,809	183,788	207,597
Bududa	105,820	104,353	13,753	196,420	210,173
Bugiri	185,925	196,988	64,223	318,690	382,913
Bukedea	98,684	104,916	10,927	192,673	203,600
Bukwo	45,058	44,298	12,094	77,262	89,356
Bulambuli	86,108	88,405	16,867	157,646	174,513
Busia	156,447	167,215	54,798	268,864	323,662
Butaleja	119,466	124,687	33,201	210,952	244,153
Buyende	158,615	164,452	23,201	299,866	323,067
Iganga	241,182	263,015	92,792	411,405	504,197
Jinja	230,189	241,053	172,714	298,528	471,242
Kaberamaido	106,042	108,984	4,032	210,994	215,026
Kaliro	115,969	120,230	16,753	219,446	236,199
Kamuli	236,389	249,930	58,984	427,335	486,319
Kapchorwa	51,658	53,528	44,211	60,975	105,186
Katakwi	81,673	84,558	9,280	156,951	166,231

Kibuku	97,476	104,557	17,436	184,597	202,033
Kumi	116,457	122,811	36,493	202,775	239,268
Kween	47,404	46,263	6,462	87,205	93,667
Luuka	113,566	124,454	10,264	227,756	238,020
Manafwa	173,580	180,245	53,837	299,988	353,825
Mayuge	229,252	243,987	33,756	439,483	473,239
Mbale	233,339	255,621	126,544	362,416	488,960
Namayingo	106,303	109,140	15,740	199,703	215,443
Namutumba	123,911	128,646	18,679	233,878	252,557
Ngora	68,414	73,505	15,148	126,771	141,919
Pallisa	188,125	198,765	37,937	348,953	386,890
Serere	139,493	146,410	12,158	273,745	285,903
Sironko	120,862	121,559	34,104	208,317	242,421
Soroti	144,976	151,857	49,685	247,148	296,833
Tororo	250,830	266,250	72,325	444,755	517,080

Northern	Male	Female	Urban	Rural	Total
Abim	52,456	55,510	17,168	90,798	107,966
Adjumani	108,298	116,953	41,064	184,187	225,251
Agago	110,495	117,297	29,153	198,639	227,792
Alebtong	110,989	116,552	6,702	220,839	227,541
Amolatar	73,014	74,152	21,479	125,687	147,166
Amudat	54,246	51,523	11,786	93,983	105,769
Amuru	91,284	95,412	9,302	177,394	186,696
Apac	180,995	187,631	75,300	293,326	368,626
Arua	374,755	407,322	61,962	720,115	782,077
Dokolo	89,476	93,617	20,135	162,958	183,093
Gulu	134,571	141,042	150,306	125,307	275,613
Kaabong	79,207	88,672	11,559	156,320	167,879
Kitgum	99,258	104,790	75,581	128,467	204,048
Koboko	102,250	104,245	57,902	148,593	206,495
Kole	117,164	122,163	8,860	230,467	239,327
Kotido	86,169	94,881	66,454	114,596	181,050
Lamwo	65,106	69,265	21,700	112,671	134,371
Lira	196,663	211,380	101,155	306,888	408,043
Maracha	87,900	98,234	9,291	176,843	186,134
Moroto	49,746	53,686	14,196	89,236	103,432
Moyo	68,940	70,072	10,579	128,433	139,012
Nakapiripirit	74,578	82,112	3,727	152,963	156,690
Napak	65,518	76,706	4,733	137,491	142,224
Nebbi	191,104	205,690	58,069	338,725	396,794
Nwoya	65,969	67,537	13,592	119,914	133,506
Omoro	78,837	81,895	18,952	141,780	160,732
Otuke	51,187	53,067	6,213	98,041	104,254
Oyam	187,121	196,523	18,399	365,245	383,644
Pader	86,635	91,369	13,382	164,622	178,004

Yumbe	230,626	254,196	34,806	450,016	484,822
Zombo	115,824	124,257	43,723	196,358	240,081
<hr/>					
Western	Male	Female	Urban	Rural	Total
Buhweju	59,059	61,661	2,956	117,764	120,720
Buliisa	57,801	55,360	7,238	105,923	113,161
Bundibugyo	108,435	115,952	40,219	184,168	224,387
Bushenyi	114,207	120,236	56,070	178,373	234,443
Hoima	287,906	285,080	105,944	467,042	572,986
Ibanda	121,440	128,185	136,860	112,765	249,625
Isingiro	235,621	250,739	58,408	427,952	486,360
Kabale	158,238	173,097	78,585	252,750	331,335
Kabarole	233,648	235,588	158,231	311,005	469,236
Kagadi	171,812	179,221	45,286	305,747	351,033
Kakumiro	147,157	145,951	9,834	283,274	293,108
Kamwenge	202,503	211,951	22,840	391,614	414,454
Kanungu	121,081	131,063	51,008	201,136	252,144
Kasese	338,215	356,772	140,050	554,937	694,987
Kibaale	70,815	70,132	6,650	134,297	140,947
Kiruhura	166,214	161,863	31,874	296,203	328,077
Kiryandongo	132,822	133,375	55,770	210,427	266,197
Kisoro	126,055	155,650	27,611	254,094	281,705
Kyegegwa	140,617	141,020	26,294	255,343	281,637
Kyenjojo	210,599	211,605	64,812	357,392	422,204
Masindi	148,121	142,992	94,438	196,675	291,113
Mbarara	230,082	242,547	195,318	277,311	472,629
Mitooma	86,484	96,960	11,396	172,048	183,444
Ntoroko	34,038	32,967	23,789	43,216	67,005
Ntungamo	232,469	251,372	71,485	412,356	483,841
Rubanda	92,011	104,885	26,669	170,227	196,896
Rubirizi	61,765	67,384	17,274	111,875	129,149
Rukungiri	150,016	164,678	43,576	271,118	314,694
Sheema	99,225	108,118	110,256	97,087	207,343

Appendix 2: The Household Questionnaire and Codelist for the National Population and Housing Questionnaire, 2014



Republic of Uganda

National Population and Housing Census 2014

HOUSEHOLD QUESTIONNAIRE



BOOK NUMBER

IDENTIFICATION PARTICULARS

WRITE NAME IN CAPITAL LETTERS		CODE
DISTRICT:		
COUNTY/MUNICIPALITY:		
SUB COUNTY/DIVISION/TOWN COUNCIL:		
PARISH/WARD:		
LC1:		
EA:		
ENUMERATOR'S NAME AND CODE:		Code
ENUMERATOR'S SIGNATURE:		

<p><i>Hello, my name is</i></p> <p><i>and I work with Uganda Bureau of Statistics (UBOS). We are conducting the National Population and Housing Census 2014. We are visiting each and every</i></p>	<table border="1"> <thead> <tr> <th colspan="2">Result Code (R1)</th> </tr> </thead> <tbody> <tr><td>1</td><td>Completed</td></tr> <tr><td>2</td><td>Partially Completed</td></tr> <tr><td>3</td><td>Not Interviewed</td></tr> </tbody> </table>	Result Code (R1)		1	Completed	2	Partially Completed	3	Not Interviewed	<table border="1"> <thead> <tr> <th colspan="4">Ethnicity (P8)</th> <th rowspan="2">Country Of Citizenship For Non-Ugandans</th> </tr> </thead> <tbody> <tr> <td>511</td><td>Acholi</td> <td>533</td><td>Banyaruguru</td> <td>555</td><td>Kakwa</td> </tr> <tr> <td>512</td><td>Aliba</td> <td>534</td><td>Banyarwanda</td> <td>556</td><td>Karimojong</td> </tr> <tr> <td>513</td><td>Alur</td> <td>535</td><td>Banyole</td> <td>557</td><td>Kebu (Okebu)</td> </tr> <tr> <td>514</td><td>Aringa</td> <td>536</td><td>Banyoro</td> <td>558</td><td>Kuku</td> </tr> <tr> <td>515</td><td>Baamba</td> <td>537</td><td>Baruli</td> <td>559</td><td>Kumam</td> </tr> <tr> <td>516</td><td>Babukusu</td> <td>538</td><td>Barundi</td> <td>560</td><td>Lango</td> </tr> <tr> <td>517</td><td>Babwisi</td> <td>539</td><td>Basamia</td> <td>561</td><td>Lendu</td> </tr> <tr> <td>518</td><td>Bafumbira</td> <td>540</td><td>Basoga</td> <td>562</td><td>Lugbara</td> </tr> <tr> <td>519</td><td>Baganda</td> <td>541</td><td>Basongora</td> <td>563</td><td>Madi</td> </tr> <tr> <td>520</td><td>Bagisu</td> <td>542</td><td>Batagwenda</td> <td>564</td><td>Mening</td> </tr> <tr> <td>521</td><td>Bagungu</td> <td>543</td><td>Batoro</td> <td>565</td><td>Mvuba</td> </tr> <tr> <td>522</td><td>Bagwe</td> <td>544</td><td>Batuku</td> <td>566</td><td>Napore</td> </tr> <tr> <td>523</td><td>Bagwere</td> <td>545</td><td>Batwa</td> <td>567</td><td>Ngikutio</td> </tr> <tr> <td>524</td><td>Bahehe</td> <td>546</td><td>Chope</td> <td>568</td><td>Nubi</td> </tr> <tr> <td>525</td><td>Bahororo</td> <td>547</td><td>Dodoth</td> <td>569</td><td>Nyangia</td> </tr> <tr> <td>526</td><td>Bakenyi</td> <td>548</td><td>Ethur</td> <td>570</td><td>Pokot</td> </tr> <tr> <td>527</td><td>Bakiga</td> <td>549</td><td>Gimara</td> <td>571</td><td>Reli</td> </tr> <tr> <td>528</td><td>Bakonz</td> <td>550</td><td>Ik (Teuso)</td> <td>572</td><td>Sabiny</td> </tr> <tr> <td>529</td><td>Banyabindi</td> <td>551</td><td>Iteso</td> <td>573</td><td>Shana</td> </tr> <tr> <td>530</td><td>Banyabutumbi</td> <td>552</td><td>Jie</td> <td>574</td><td>So (Tepeth)</td> </tr> <tr> <td>531</td><td>Banyankore</td> <td>553</td><td>Jonam</td> <td>575</td><td>Vonoma</td> </tr> <tr> <td>532</td><td>Banyara</td> <td>554</td><td>Jopadhola</td> <td>576</td><td>Other Ugandan</td> </tr> </tbody> </table>				Ethnicity (P8)				Country Of Citizenship For Non-Ugandans	511	Acholi	533	Banyaruguru	555	Kakwa	512	Aliba	534	Banyarwanda	556	Karimojong	513	Alur	535	Banyole	557	Kebu (Okebu)	514	Aringa	536	Banyoro	558	Kuku	515	Baamba	537	Baruli	559	Kumam	516	Babukusu	538	Barundi	560	Lango	517	Babwisi	539	Basamia	561	Lendu	518	Bafumbira	540	Basoga	562	Lugbara	519	Baganda	541	Basongora	563	Madi	520	Bagisu	542	Batagwenda	564	Mening	521	Bagungu	543	Batoro	565	Mvuba	522	Bagwe	544	Batuku	566	Napore	523	Bagwere	545	Batwa	567	Ngikutio	524	Bahehe	546	Chope	568	Nubi	525	Bahororo	547	Dodoth	569	Nyangia	526	Bakenyi	548	Ethur	570	Pokot	527	Bakiga	549	Gimara	571	Reli	528	Bakonz	550	Ik (Teuso)	572	Sabiny	529	Banyabindi	551	Iteso	573	Shana	530	Banyabutumbi	552	Jie	574	So (Tepeth)	531	Banyankore	553	Jonam	575	Vonoma	532	Banyara	554	Jopadhola	576	Other Ugandan	<table border="1"> <thead> <tr> <th colspan="2">Religion (P9)</th> </tr> </thead> <tbody> <tr><td>10</td><td>No Religion</td></tr> <tr><td>11</td><td>Anglican</td></tr> <tr><td>12</td><td>Catholic</td></tr> <tr><td>13</td><td>Muslim</td></tr> <tr><td>14</td><td>Seventh-Day Adventist</td></tr> <tr><td>15</td><td>Orthodox</td></tr> <tr><td>16</td><td>Pentecostal/ Born Again/ Evangelical</td></tr> <tr><td>17</td><td>Baha'i</td></tr> <tr><td>18</td><td>Baptist</td></tr> <tr><td>19</td><td>Jews</td></tr> <tr><td>20</td><td>Presbyterian</td></tr> <tr><td>21</td><td>Mammon</td></tr> <tr><td>22</td><td>Hindus</td></tr> <tr><td>23</td><td>Buddhist</td></tr> <tr><td>24</td><td>Jehovah's Witness</td></tr> <tr><td>25</td><td>Salvation Army</td></tr> <tr><td>26</td><td>Traditional</td></tr> <tr><td>27</td><td>Others</td></tr> </tbody> </table>	Religion (P9)		10	No Religion	11	Anglican	12	Catholic	13	Muslim	14	Seventh-Day Adventist	15	Orthodox	16	Pentecostal/ Born Again/ Evangelical	17	Baha'i	18	Baptist	19	Jews	20	Presbyterian	21	Mammon	22	Hindus	23	Buddhist	24	Jehovah's Witness	25	Salvation Army	26	Traditional	27	Others	<table border="1"> <thead> <tr> <th colspan="2">Section 5: Crop Codes</th> </tr> </thead> <tbody> <tr><td>10</td><td>Maize</td><td>39</td><td>Cocoa</td></tr> <tr><td>11</td><td>Beans</td><td>40</td><td>Paw Paw</td></tr> <tr><td>12</td><td>Banana (Food)</td><td>41</td><td>Eggplants</td></tr> <tr><td>13</td><td>Cassava</td><td>42</td><td>Onions</td></tr> <tr><td>14</td><td>Sweet Potatoes</td><td>43</td><td>Passion fruit</td></tr> <tr><td>15</td><td>G/nuts</td><td>44</td><td>Greens (Dodo/ Nakati/ Bbugga/ Malakwang, etc)</td></tr> <tr><td>16</td><td>Sorghum</td><td></td><td></td></tr> <tr><td>17</td><td>Millet</td><td></td><td></td></tr> <tr><td>18</td><td>Sim Sim</td><td>45</td><td>Vanilla</td></tr> <tr><td>19</td><td>Banana (Beer)</td><td>46</td><td>Tea</td></tr> <tr><td>20</td><td>Irish Potatoes</td><td>47</td><td>Wheat</td></tr> <tr><td>21</td><td>Soya Beans</td><td>48</td><td>Barley</td></tr> <tr><td>22</td><td>Rice</td><td>49</td><td>Spinach</td></tr> <tr><td>23</td><td>Banana (sweet)</td><td>50</td><td>Cucumber</td></tr> <tr><td>24</td><td>Field Peas (Kawo)</td><td>51</td><td>Water melons</td></tr> <tr><td></td><td></td><td>52</td><td>Carrots</td></tr> <tr><td>25</td><td>Cow Peas</td><td>53</td><td>Garlic</td></tr> <tr><td>26</td><td>Pigeon Peas</td><td>54</td><td>Mushrooms</td></tr> <tr><td>27</td><td>Sugar cane</td><td>55</td><td>Tobacco</td></tr> <tr><td>28</td><td>Yam</td><td>56</td><td>Grapes</td></tr> <tr><td>29</td><td>Avocado</td><td>57</td><td>Lemons & Limes</td></tr> <tr><td>30</td><td>Tomatoes</td><td>58</td><td>Tangerines &</td></tr> <tr><td>31</td><td>Sunflower</td><td></td><td>Mandarines</td></tr> <tr><td>32</td><td>Cotton</td><td>59</td><td>Straw berries</td></tr> <tr><td>33</td><td>Jackfruit</td><td>60</td><td>Apples & Apricots</td></tr> </tbody> </table>	Section 5: Crop Codes		10	Maize	39	Cocoa	11	Beans	40	Paw Paw	12	Banana (Food)	41	Eggplants	13	Cassava	42	Onions	14	Sweet Potatoes	43	Passion fruit	15	G/nuts	44	Greens (Dodo/ Nakati/ Bbugga/ Malakwang, etc)	16	Sorghum			17	Millet			18	Sim Sim	45	Vanilla	19	Banana (Beer)	46	Tea	20	Irish Potatoes	47	Wheat	21	Soya Beans	48	Barley	22	Rice	49	Spinach	23	Banana (sweet)	50	Cucumber	24	Field Peas (Kawo)	51	Water melons			52	Carrots	25	Cow Peas	53	Garlic	26	Pigeon Peas	54	Mushrooms	27	Sugar cane	55	Tobacco	28	Yam	56	Grapes	29	Avocado	57	Lemons & Limes	30	Tomatoes	58	Tangerines &	31	Sunflower		Mandarines	32	Cotton	59	Straw berries	33	Jackfruit	60	Apples & Apricots
	Result Code (R1)																																																																																																																																																																																																																																																																																																			
	1	Completed																																																																																																																																																																																																																																																																																																		
	2	Partially Completed																																																																																																																																																																																																																																																																																																		
	3	Not Interviewed																																																																																																																																																																																																																																																																																																		
	Ethnicity (P8)				Country Of Citizenship For Non-Ugandans																																																																																																																																																																																																																																																																																															
	511	Acholi	533	Banyaruguru		555	Kakwa																																																																																																																																																																																																																																																																																													
	512	Aliba	534	Banyarwanda	556	Karimojong																																																																																																																																																																																																																																																																																														
	513	Alur	535	Banyole	557	Kebu (Okebu)																																																																																																																																																																																																																																																																																														
	514	Aringa	536	Banyoro	558	Kuku																																																																																																																																																																																																																																																																																														
515	Baamba	537	Baruli	559	Kumam																																																																																																																																																																																																																																																																																															
516	Babukusu	538	Barundi	560	Lango																																																																																																																																																																																																																																																																																															
517	Babwisi	539	Basamia	561	Lendu																																																																																																																																																																																																																																																																																															
518	Bafumbira	540	Basoga	562	Lugbara																																																																																																																																																																																																																																																																																															
519	Baganda	541	Basongora	563	Madi																																																																																																																																																																																																																																																																																															
520	Bagisu	542	Batagwenda	564	Mening																																																																																																																																																																																																																																																																																															
521	Bagungu	543	Batoro	565	Mvuba																																																																																																																																																																																																																																																																																															
522	Bagwe	544	Batuku	566	Napore																																																																																																																																																																																																																																																																																															
523	Bagwere	545	Batwa	567	Ngikutio																																																																																																																																																																																																																																																																																															
524	Bahehe	546	Chope	568	Nubi																																																																																																																																																																																																																																																																																															
525	Bahororo	547	Dodoth	569	Nyangia																																																																																																																																																																																																																																																																																															
526	Bakenyi	548	Ethur	570	Pokot																																																																																																																																																																																																																																																																																															
527	Bakiga	549	Gimara	571	Reli																																																																																																																																																																																																																																																																																															
528	Bakonz	550	Ik (Teuso)	572	Sabiny																																																																																																																																																																																																																																																																																															
529	Banyabindi	551	Iteso	573	Shana																																																																																																																																																																																																																																																																																															
530	Banyabutumbi	552	Jie	574	So (Tepeth)																																																																																																																																																																																																																																																																																															
531	Banyankore	553	Jonam	575	Vonoma																																																																																																																																																																																																																																																																																															
532	Banyara	554	Jopadhola	576	Other Ugandan																																																																																																																																																																																																																																																																																															
Religion (P9)																																																																																																																																																																																																																																																																																																				
10	No Religion																																																																																																																																																																																																																																																																																																			
11	Anglican																																																																																																																																																																																																																																																																																																			
12	Catholic																																																																																																																																																																																																																																																																																																			
13	Muslim																																																																																																																																																																																																																																																																																																			
14	Seventh-Day Adventist																																																																																																																																																																																																																																																																																																			
15	Orthodox																																																																																																																																																																																																																																																																																																			
16	Pentecostal/ Born Again/ Evangelical																																																																																																																																																																																																																																																																																																			
17	Baha'i																																																																																																																																																																																																																																																																																																			
18	Baptist																																																																																																																																																																																																																																																																																																			
19	Jews																																																																																																																																																																																																																																																																																																			
20	Presbyterian																																																																																																																																																																																																																																																																																																			
21	Mammon																																																																																																																																																																																																																																																																																																			
22	Hindus																																																																																																																																																																																																																																																																																																			
23	Buddhist																																																																																																																																																																																																																																																																																																			
24	Jehovah's Witness																																																																																																																																																																																																																																																																																																			
25	Salvation Army																																																																																																																																																																																																																																																																																																			
26	Traditional																																																																																																																																																																																																																																																																																																			
27	Others																																																																																																																																																																																																																																																																																																			
Section 5: Crop Codes																																																																																																																																																																																																																																																																																																				
10	Maize	39	Cocoa																																																																																																																																																																																																																																																																																																	
11	Beans	40	Paw Paw																																																																																																																																																																																																																																																																																																	
12	Banana (Food)	41	Eggplants																																																																																																																																																																																																																																																																																																	
13	Cassava	42	Onions																																																																																																																																																																																																																																																																																																	
14	Sweet Potatoes	43	Passion fruit																																																																																																																																																																																																																																																																																																	
15	G/nuts	44	Greens (Dodo/ Nakati/ Bbugga/ Malakwang, etc)																																																																																																																																																																																																																																																																																																	
16	Sorghum																																																																																																																																																																																																																																																																																																			
17	Millet																																																																																																																																																																																																																																																																																																			
18	Sim Sim	45	Vanilla																																																																																																																																																																																																																																																																																																	
19	Banana (Beer)	46	Tea																																																																																																																																																																																																																																																																																																	
20	Irish Potatoes	47	Wheat																																																																																																																																																																																																																																																																																																	
21	Soya Beans	48	Barley																																																																																																																																																																																																																																																																																																	
22	Rice	49	Spinach																																																																																																																																																																																																																																																																																																	
23	Banana (sweet)	50	Cucumber																																																																																																																																																																																																																																																																																																	
24	Field Peas (Kawo)	51	Water melons																																																																																																																																																																																																																																																																																																	
		52	Carrots																																																																																																																																																																																																																																																																																																	
25	Cow Peas	53	Garlic																																																																																																																																																																																																																																																																																																	
26	Pigeon Peas	54	Mushrooms																																																																																																																																																																																																																																																																																																	
27	Sugar cane	55	Tobacco																																																																																																																																																																																																																																																																																																	
28	Yam	56	Grapes																																																																																																																																																																																																																																																																																																	
29	Avocado	57	Lemons & Limes																																																																																																																																																																																																																																																																																																	
30	Tomatoes	58	Tangerines &																																																																																																																																																																																																																																																																																																	
31	Sunflower		Mandarines																																																																																																																																																																																																																																																																																																	
32	Cotton	59	Straw berries																																																																																																																																																																																																																																																																																																	
33	Jackfruit	60	Apples & Apricots																																																																																																																																																																																																																																																																																																	
<table border="1"> <thead> <tr> <th colspan="2">Relationship (P2)</th> </tr> </thead> <tbody> <tr><td>10</td><td>Usual head of hh - Absent</td></tr> <tr><td>11</td><td>Usual head of hh - Present</td></tr> <tr><td>12</td><td>Spouse</td></tr> <tr><td>13</td><td>Biological Son</td></tr> <tr><td>14</td><td>Biological Daughter</td></tr> <tr><td>15</td><td>Step son</td></tr> <tr><td>16</td><td>Step daughter</td></tr> <tr><td>17</td><td>Grandson</td></tr> <tr><td>18</td><td>Grand daughter</td></tr> <tr><td>19</td><td>Parent to head or spouse</td></tr> <tr><td>20</td><td>Brother or Sister to head or spouse</td></tr> <tr><td>21</td><td>Other relative</td></tr> <tr><td>22</td><td>Non relative</td></tr> </tbody> </table>	Relationship (P2)		10	Usual head of hh - Absent	11	Usual head of hh - Present	12	Spouse	13	Biological Son	14	Biological Daughter	15	Step son	16	Step daughter	17	Grandson	18	Grand daughter	19	Parent to head or spouse	20	Brother or Sister to head or spouse	21	Other relative	22	Non relative	<table border="1"> <thead> <tr> <th colspan="2">Residential Status (P4)</th> </tr> </thead> <tbody> <tr><td>1</td><td>Usual household member</td></tr> </tbody> </table>	Residential Status (P4)		1	Usual household member	<table border="1"> <thead> <tr> <th colspan="2">Major Field of Specialization (P20)</th> </tr> </thead> <tbody> <tr><td>10</td><td>Health Sciences</td></tr> </tbody> </table>	Major Field of Specialization (P20)		10	Health Sciences	<table border="1"> <thead> <tr> <th colspan="2">Type of Disability (P14-P17)</th> </tr> </thead> <tbody> <tr><td>1</td><td>No - no difficulty</td></tr> </tbody> </table>	Type of Disability (P14-P17)		1	No - no difficulty																																																																																																																																																																																																																																																									
Relationship (P2)																																																																																																																																																																																																																																																																																																				
10	Usual head of hh - Absent																																																																																																																																																																																																																																																																																																			
11	Usual head of hh - Present																																																																																																																																																																																																																																																																																																			
12	Spouse																																																																																																																																																																																																																																																																																																			
13	Biological Son																																																																																																																																																																																																																																																																																																			
14	Biological Daughter																																																																																																																																																																																																																																																																																																			
15	Step son																																																																																																																																																																																																																																																																																																			
16	Step daughter																																																																																																																																																																																																																																																																																																			
17	Grandson																																																																																																																																																																																																																																																																																																			
18	Grand daughter																																																																																																																																																																																																																																																																																																			
19	Parent to head or spouse																																																																																																																																																																																																																																																																																																			
20	Brother or Sister to head or spouse																																																																																																																																																																																																																																																																																																			
21	Other relative																																																																																																																																																																																																																																																																																																			
22	Non relative																																																																																																																																																																																																																																																																																																			
Residential Status (P4)																																																																																																																																																																																																																																																																																																				
1	Usual household member																																																																																																																																																																																																																																																																																																			
Major Field of Specialization (P20)																																																																																																																																																																																																																																																																																																				
10	Health Sciences																																																																																																																																																																																																																																																																																																			
Type of Disability (P14-P17)																																																																																																																																																																																																																																																																																																				
1	No - no difficulty																																																																																																																																																																																																																																																																																																			

BOOK NUMBER



DA2

Republic of Uganda National Population and Housing Census 2014



HOUSEHOLD QUESTIONNAIRE

SHEET NUMBER 01



SUMMARY INFORMATION

IDENTIFICATION PARTICULARS

WRITE NAME IN CAPITAL LETTERS

CODE

DISTRICT

COUNTY /
MUNICIPALITYSUB-COUNTY/
DIVISION / T.C.PARISH /
WARDHousehold
Number

Population

Male

Female

Total

(1)

(2)

(3)

(4)

Household
Number

Population

Male

Female

Total

(1)


(2)

(3)

(4)

46

[illegible]

DD4						HOUSEHOLD NUMBER							
SECTION 2: HOUSING CONDITIONS						SECTION 3: COMMUNITY SERVICES						SECTION 4: HOUSEHOLD CHARACTERISTICS	
What is the occupancy tenure of the dwelling unit?	What type of dwelling unit does this household occupy?	How many rooms were used on the Census Night for sleeping?	Types of materials mainly used for construction of the roof	Types of materials mainly used for construction of the wall	Types of materials mainly used for the floor	What is the distance from home to the nearest on foot, irrespective of whether you use the service or not <i>(Record distance in kms, if distance is given in miles, refer to code list H7-H13)</i>						What source of energy does this household mainly use for lighting ?	
H1	H2	H3	H4	H5	H6	H7 Public Health Facility		.	H11 Public Secondary School		.	H14	
10 = Owner occupied 11 = Free Public 12 = Free Private 13 = Subsidized public 14 = Subsidized private 15 = Rented public 16 = Rented private 96 = Other	10 = Detached house (single or multi-storey) 11 = Semi-Detached house 12 = Flat in a Block of Flats 13 = Room or rooms of a Main House 14 = Servants Quarters 15 = Tenement (Muzigo) 16 = Garage 17 = Go down/Basement 18 = Store 96 = Other	If 9 or more were used, record 9	10 = Iron sheets 11 = Tiles 12 = Asbestos 13 = Concrete 14 = Tins 15 = Thatch 96 = Other	10 = Concrete/Stones 11 = Cement Blocks 12 = Burnt/Stabilised bricks 13 = Unburnt bricks with Cement 14 = Unburnt bricks with mud 15 = Wood 16 = Mud and Pole 17 = Tin/Iron sheets 96 = Other	10 = Earth 11 = Rammed earth 12 = Cement screed 13 = Concrete 14 = Tiles 15 = Brick 16 = Stone 17 = Wood 96 = Other							10 = Electricity- National grid (Umeme) 11 = Electricity- Solar 12 = Electricity- Personal Generator 13 = Electricity- Community/thermal plant 14 = Gas 15 = Liquefied Petroleum Gas (LPG) 16 = Biogas 17 = Paraffin-Lantern 18 = Paraffin-Tadooba 19 = Candles 20 = Firewood 21 = Cow Dung 22 = Grass (reeds) 96 = Other	
SECTION 4: HOUSEHOLD CHARACTERISTICS (CONTINUED)													
What source of energy does this household mainly use for cooking ?	What is the household's main source of water for drinking ?	What is the distance to this source of water ?	What type of toilet facility does this household mainly use?	Does the Household share this toilet facility with other households?	What is the most commonly used method of solid waste disposal from the household?	What type of bathroom does this household mainly use?	What type of kitchen does this household mainly use?						
H15	H16	H17	H18	H19	H20	H21	H22						
10 = Electricity- National grid (Umeme) 11 = Electricity- Solar 12 = Electricity- Personal Generator 13 = Electricity- Community/thermal plant 14 = Gas 15 = Liquefied Petroleum Gas (LPG) 16 = Biogas 17 = Paraffin-Stove 18 = Charcoal 19 = Firewood	10 = Piped water into dwelling 11 = Piped water to the yard 12 = Public Taps 13 = Borehole in yard/plot 14 = Public borehole 15 = Protected well/spring 16 = Unprotected well/spring 17 = River/Stream/Lake 18 = Vendor 19 = Tanker Truck 20 = Gravity Flow Scheme 21 = Rain Water	<i>(Record distance in kms, if distance is given in miles, see distance conversion list)</i> <i>If the water source</i>	10 = Flush Toilet 11 = VIP Latrine 12 = Covered Pit Latrine <u>with a slab</u> 13 = Covered Pit Latrine <u>without a slab</u> 14 = Uncovered Pit Latrine <u>with a slab</u> 15 = Uncovered Pit Latrine <u>without a slab</u> 16 = Ecosan (compost toilet)	1 = Yes 2 = No 7 = N/A (For "No Facility, Bush, Polythene bags, bucket etc)	10 = Occupants dispose solid waste in the garden, and DO NOT burn or bury it. 11 = Occupants burn solid waste 12 = Occupants bury solid waste 13 = Occupants dispose solid waste in a local dump supervised by urban authorities 14 = Occupants dispose solid waste in a local dump NOT supervised by urban authorities 15 = Solid waste collected by waste vendor	10 = Inside, drainage provided 11 = Inside, no drainage provided 12 = Outside built, drainage provided 13 = Outside built, no drainage provided 14 = Make shift	10 = Inside, specific room 11 = Inside, no specific room 12 = Outside, built 13 = Make shift 14 = Open space						

[illegible]

DISTRICT OF PREVIOUS RESIDENCE (P12)						H7-H13, H17								
Central		Eastern		Northern		Western		Country of Previous Residence		Distance Conversion				
										1 mile = 1.6 km				
										Mile	Km	Mile	Km	
101	Kalangala	201	Bugiri	301	Adjumani	401	Bundibugyo	671	Kenya	0.5	1.0	=	0.8	1.6
102	Kampala	202	Busia	302	Apac	402	Bushenyi	672	Tanzania	1.5	2.0	=	2.4	3.2
103	Kiboga	203	Iganga	303	Arua 304 Gulu	403	Hoima	673	Rwanda	2.5	3.0	=	4.0	4.8
104	Luwero	204	Jinja	305	Kitgum	404	Kabale	674	Burundi	3.5	4.0	=	5.6	6.4
105	Masaka	205	Kamuli	306	Kotido	405	Kabarole	675	South Sudan	4.5	5.0	=	7.2	8.0
106	Mpigi	206	Kapchorwa	307	Lira	406	Kasese	676	Dem. Rep. Of Congo	5.5	6.0	=	8.8	
107	Mubende	207	Katakwi	308	Moroto	407	Kibaale	677	Somalia	6.5	7.0	=	9.6	
108	Mukono	208	Kumi	309	Moyo	408	Kisoro	678	Other Africa	7.5	8.0	=	10.4	11.2
109	Nakasongola	209	Mbale	310	Nebbi	409	Masindi	681	United Kingdom	8.5	9.0	=	12.0	12.8
110	Sembabule	210	Pallisa	311	Nakapiripirit	410	Mbarara	682	Other Europe	9.5		=	13.6	14.4
111	Kayunga	211	Soroti	312	Pader	411	Ntungamo	683	Asia 684 USA	10.0		=	15.2	16.0
112	Wakiso	212	Tororo	313	Yumbe	412	Rukungiri	685	Canada	10.5		=	16.8	17.6
113	Lyantonde	213	Kaberamaido	314	Abim	413	Kamwenge	686	Central & Latin America	11.0		=	18.4	19.2
114	Mityana	214	Mayuge	315	Amolatar	414	Kanungu	687	Australia	11.5		=	20.0	20.8
115	Nakaseke	215	Sironko	316	Amuru	415	Kyenjojo	688	Oceania	12.0		=	21.6	22.4
116	Buikwe	216	Amuria	317	Dokolo	416	Buliisa	689	Non-Ugandan-Not Stated	12.5		=	23.2	24.0
117	Bukomasimbi	217	Budaka	318	Kaabong	417	Ibanda			13.0		=	24.8	
118	Butambala	218	Bududa	319	Koboko	418	Isingiro			13.5		=	25.6	
119	Buvuma	219	Bukedea	320	Maracha	419	Kiruhura			14.0		=		
120	Gomba	220	Bukwo	321	Oyam	420	Buhweju			14.5		=		
121	Kalungu	221	Butaleja	322	Agago	421	Kiryandongo			15.0		=		
122	Kyankwanzi	222	Kaliro	323	Alebtong	422	Kyegegwa			15.5		=		
123	Lwengo	223	Manafwa	324	Amudat	423	Mitooma			16.0		=		
124		224	Namutumba	325	Kole	424	Ntoroko					=		
		225	Bulambuli	326	Lamwo	425	Rubirizi					=		
		226	Buyende	327	Napak	426	Sheema					=		
		227	Kibuku	328	Nwoya 329 Otuke							=		
		228	Kween	330 Zombo								=		
		229	Luuka											
		230	Namayingo											
		Ngora												
		231	Serere											