



# **National Population and Housing Census 2014**

## **Area Specific Profiles**



---

## **Kabarole District**

---

**April 2017**

*This report presents findings of National Population and Housing Census (NPHC) 2014 undertaken by the Uganda Bureau of Statistics (UBOS). Additional information about the Census may be obtained from the UBOS Head Office, Statistics House, Plot 9 Colville Street, P. O. Box 7186, Kampala, Uganda; Telephone: +256-414 706000 Fax: +256-414 237553; E-mail: [ubos@ubos.org](mailto:ubos@ubos.org); Website: [www.ubos.org](http://www.ubos.org)*

*Cover Photos: Uganda Bureau of Statistics*

### **Recommended Citation**

*Uganda Bureau of Statistics 2017, The National Population and Housing Census 2014 – Area Specific Profile Series, Kampala, Uganda.*

## FOREWORD

Demographic and socio-economic data are useful for planning and evidence-based decision making in any country. Such data are collected through Population Censuses, Demographic and Socio-economic Surveys, Civil Registration Systems and other Administrative sources. In Uganda, however, the Population and Housing Census remains the main source of demographic data, especially at the sub-national level.

Population Census taking in Uganda dates back to 1911 and since then the country has undertaken five such Censuses. The most recent, the National Population and Housing Census 2014, was undertaken under the theme 'Counting for Planning and Improved Service Delivery'. The enumeration for the 2014 Census was conducted in August/September 2014. The Uganda Bureau of Statistics (UBOS) worked closely with different Government Ministries, Departments and Agencies (MDAs) as well as Local Governments (LGs) to undertake the census exercise.

The 2014 Census provides several statistics on different aspects of the population. These include the population size and distribution which is a key indicator used for resource allocation, measurement of the extent of service delivery, decision making and budgeting among others. Other information includes the characteristics of the population, those of the dwellings they live in and information on the Household based Agricultural activities.

On behalf of the Bureau, I would like to appreciate the Government of Uganda for providing the necessary resources and infrastructure for undertaking the National Population and Housing Census (NPHC) 2014. In addition, the Bureau would like to thank the Development Partners, particularly United Kingdom Aid (UKAid), the United Nations Fund for Population Activities (UNFPA) and the United Nations Children's Fund (UNICEF) for providing technical and financial support towards the Census. The Bureau would also like to thank the Media for creating awareness about the Census 2014 and, most importantly, the individual households who voluntarily provided the required information.

**Together We Count**



**Ben Paul Mungyereza**  
**EXECUTIVE DIRECTOR**

## PREFACE

The Uganda Bureau of Statistics Act No. 12 of 1998 provides for the Minister responsible for Planning to direct 'that a Census be taken' on any matter specified in the Act. This was the legal basis for conducting the National Population and Housing Census (NPHC) 2014. The long-term objective of the NPHC 2014 is to ensure availability of bench-mark demographic and socio-economic data for use in planning, evidence based decision making, policy formulation and programme evaluation.

In order to support the planning process, the results from the Census 2014 are being released in phases as and when they become available. The Provisional Results Report was released in November, 2014 followed by the Final Results which were released in March 2016 and the Sub-county Reports in June 2016. These reports collectively provided information on the characteristics of the population and households at the national, district and sub-county levels.

The **Constituency Profiles Series** presents the characteristics of the population and household as well as the housing conditions of the population in each parliamentary constituency of the district. For convenience, however, the profiles of all constituencies in one district have been published in one report. In each report, the Appendix has selected national level tables for reference.

Uganda Bureau of Statistics (UBOS) is in the process of producing several other reports including the National Analytical Results (Monograph Series), District-level Analytical Reports and the Census Atlas. These will present detailed findings covering more indicators on different thematic areas. In addition to the above reports, the Bureau will be providing electronic datasets to facilitate deeper analysis of the data.

The Bureau, appeals to Policy Makers, Researchers and Academicians to make extensive use of this information for policy analysis and evidence-based decision-making at different levels of service delivery. Together we can harness information resources from the Census to improve service delivery and create a better Uganda.

## ABOUT THE INDICATORS

### Household

A group of persons who usually eat and live together. A household may be comprised of one or more persons provided they share the same meal and sleep under the same roof. The persons may be related usually in a family setting or may not be related.

### Household population

All those persons who were enumerated in households. It excludes population which was enumerated on the streets (floating population) or those who were living in Institutions such as correction centres, religious institutions and health facility in-patients.

### Population size

Refers to the total population count in the country or any geographical location based on the census reference night. It includes all those persons who were enumerated in households and institutions.

### Population by age groups or specific age

This is the total count of the household population by a given age, age- groups or special age-groups. It excludes the non-household population.

### Education characteristics/indicators

The indicators refer to specific age groups. The official school going age is 6-12 years for primary education, 13-18 years for secondary education and 19-24 years for tertiary education. However, the analysis includes the age-group 6-15 years to take into consideration those who start primary level at more than 6 years.

For those who have never been to school, we consider the age group 15 years and above on the assumption that by age 15, there are minimal chances for one joining school for the first time.

### Illiteracy

This is defined as lack of the ability to read and write with understanding in any language. Persons aged 10 years and above who could not read and write responded (Codes 2, 3 and 4) to Question P21 of the Household Questionnaire. The objective of using this indicator is to shed light on the areas that need improvements in the delivery of the services.

### Ownership of a birth certificate

Ownership includes all those persons (adults or children) who either had a Short Birth Certificate or a Long Birth Certificate during census enumeration. The analysis is based on specific age categories.

## **Parental survival and Orphanhood**

Parental survival and orphanhood are derived variables which are based on two questions (P10 and P11), whether or not the biological mother/father of the respondent was still alive at the time of the census. Orphans are persons below the age of 18 who have lost any or both of their parents.

## **Disability**

The questions P14 to P17 on functional difficulty are used to determine whether the person has a disability or not. It includes all persons aged 2 years and above. An individual is considered to be disabled if he/she has any one of the 4 questions with at least some difficulty.

Multiple disabilities refer to all persons who reported more than one functional difficulty.

## **Marriage and Child Bearing**

Marital Status refers to all those persons who are living together and consider themselves as married. It includes all forms of consensual union whether legal or non-legal, religious or cultural or non-consensual union.

## **Employment**

Questions on employment were eligible for all household population aged 10 years and above. Currently the age category for the working population 16 -64 years. The analysis is based on specific age groups of children 10-15 years, (other countries define a child as anyone below the age of 16, hence the age group 10-15 years).

## **Construction materials of the dwelling**

The information is derived from the question on “materials used for the roof, floor and wall. Permanent floor materials include concrete, cement screed, tiles, wood, while permanent roof materials include roof tiles, iron sheets, asbestos and concrete.

## **Status of dwelling**

The permanency nature of construction materials determines the status of the dwelling. The idea is to be able to classify a dwelling unit as temporary or permanent.

## **Access to community services**

The choice of indicators is for those households that are beyond the 5 km radius for access to services (access to public/private schools, health facilities and a police station/post). The nearness of the service to the household does not take into consideration whether the services are utilized by the household or not.

## **Other environmental conditions – waste disposal**

Any household was considered to have proper waste disposal if at the time of the census it disposed off solid waste using registered or unregistered waste vendors as well as using skip bins provided by the Municipal authority.

### **Owner occupied dwellings**

These are disaggregated by household headship. The percentages for male and female headed households may not add up to 100. For instance among the female headed households, what proportion are owner occupied? Among the male headed households, what proportion are owner occupied?

### **Source of energy for lighting – electricity**

In the household questionnaire, Question H14 had about four forms of electricity used for lighting (grid, generator, solar, community/thermal plant). Any household that indicated using any of the four forms was considered to have access to electricity.

### **Household based agricultural activities**

A household engaged in agriculture is one which is engaged in any of the following:

Growing of any crops, or rearing animals or involved in bee keeping or forestry/tree growing, and any fish farming. Agricultural activities outside the district were not considered.

## TABLE OF CONTENTS

FOREWORD .....	i
PREFACE.....	ii
ABOUT THE INDICATORS .....	iii
INTRODUCTION .....	1
1.1 General Information about Uganda .....	1
1.2 About the National Population and Housing Census 2014 .....	1
1.3 National Highlights of the 2014 Census Results.....	2
AREA SPECIFIC PROFILES.....	18
KABAROLE DISTRICT .....	19
FORT PORTAL MUNICIPALITY CONSTITUENCY .....	28
BUNYANGABU COUNTY CONSTITUENCY .....	37
BURAHYA COUNTY CONSTITUENCY .....	46
APPENDICES .....	55
Appendix 1: Population by Sex and Type of Residence by District, Uganda 2014 .....	56
Appendix 2: The Household Questionnaire and code list for the National Population and Housing Census 2014.....	59



## **LIST OF MAPS**

- Map 1: Districts of Uganda as of 1st July 2016
- Map 2: Kabarole District Parliamentary Constituencies as of 1st July, 2016
- Map 3: Distribution of Population by Sub-county; Kabarole District, 2014
- Map 4: Percentage Distribution of Population Aged 6-12 Years Not in School; Kabarole District, 2014
- Map 5: Percentage Distribution of Youth Population aged 18-30 Years, Not in School and not working; Kabarole District, 2014
- Map 6: Percentage Distribution of Population aged 10-19 Years, Ever Married; Kabarole District, 2014
- Map 7: Percentage Distribution of Orphans aged 0-17 Years; Kabarole District, 2014
- Map 8: Percentage Distribution of Households within 5 Km and Over to the nearest Public Health Facility; Kabarole District, 2014
- Map 9: Percentage Distribution of Households without access to Safe Water; Kabarole District, 2014
- Map 10: Percentage Distribution of Households with no Toilet facility; Kabarole District, 2014
- Map 11: Percentage Distribution of Households having less than 2 meals a day; Kabarole District, 2014

## INTRODUCTION

### 1.1 General Information about Uganda

#### Location and Size

Uganda is located in East Africa and lies across the equator, about 800 kilometres inland from the Indian Ocean. It lies between Latitude 1° 29' South and 4° 12' North of the Equator as well as Longitude 29° 34' East and 35° 0' East of Greenwich. The country is landlocked, bordered by Kenya in the East; South Sudan in the North; Democratic Republic of Congo in the West; Tanzania in the South; and Rwanda in South West. It has a total area of 241,551 square kilometres, of which the land area covers 200,523 square kilometres.

#### Administration

The country was divided into 116 districts (as at August/September 2014). The districts were further subdivided into 200 Counties, 1,378 Sub-counties and 6,495 Parishes. The role of these administrative units is to implement and monitor government programmes at the respective levels. Overtime, the administrative units have been sub-divided with the aim of easing administration and improving the delivery of services.

### 1.2 About the National Population and Housing Census 2014

The overall objective of the National Population and Housing Census (NPHC) 2014 was to provide data that are required for planning at all levels. The NPHC 2014 had three distinct phases namely, the Preparatory Phases, the Enumeration Phase and the Post Enumeration Phase.

The preparatory work for the Census 2014 started in 2008 with development of the overall strategy of undertaking the census. Other preparatory activities included development of the questionnaires, undertaking of the census mapping, conducting the Pilot Census, carrying out the census advocacy and publicity and other administrative support services.

The enumeration phase included recruitment and training of field staff, delivery of enumeration materials, conducting the main census enumeration and retrieval of materials. The census activities in the district were conducted under the overall responsibility of the Chief Administrative Officers (CAOs) or the Executive Director in the case of Kampala Capital City Authority (KCCA). All field staff underwent mandatory ten (10) day training on Census concepts and procedures.

The Census Reference Night was the night of 27th August 2014 and the enumeration was conducted on a de facto basis. The enumeration started on 28th August and continued to 7th September 2014. The Enumerators moved from household to household within the assigned

Enumeration Areas (EAs) and administered the Census questionnaire to the Head of household or any other assigned household member through face to face interviews.

The data processing was centrally managed at the Bureau offices. The filled questionnaires were captured with scanning technology and the information extracted using automatic character recognition.

Data quality assurance enhances credibility, usability and utility of data. The Post Enumeration Survey (PES) was used as one of the tools to evaluate the quality of the census data through testing the completeness of coverage and accuracy. The PES enumeration was undertaken in October/November 2014, and it covered 800 EAs distributed in all the districts and Kampala Capital City Authority (KCCA).

### 1.3 National Highlights of the 2014 Census Results

The results of the NPHC 2014 will be published in phases. The Provisional Census Results were disseminated in November 2014. These gave the number of households and the population by sex for administrative areas down to sub-county level. The first set of the final results of the Census 2014 were published in the Main Report which was released in March 2016. The report includes information on the population size and distribution as well as characteristics of the population and the dwellings they live in. The results showed that the total population of Uganda in 2014 was 34.6 million persons as shown in Table 1.

Between 2002 and 2014, the population increased from 24.2 million to 34.6million. This implied average growth rate of 3.0 percent per annum.

**Table 1: Population size and Population Growth Rates, Uganda, 1969-2014**

Census year	Male	Female	Total	Inter-censual Period	Average Annual Growth Rate (%)
1969	4,812,447	4,722,604	9,535,051		
1980	6,259,837	6,376,342	12,636,179	1969-1980	2.7
1991	8,185,747	8,485,558	16,671,705	1980-1991	2.5
2002	11,824,273	12,403,024	24,227,297	1991-2002	3.2
2014	17,060,832	17,573,818	34,634,650	2002-2014	3.0

The distribution of the population among the districts is given in Appendix Table 1. Wakiso district had a population of nearly two (2) million, accounting for about six percent of the total population, while some districts were less populous, Kalangala district being the smallest with a population of 53,406 persons. As of 2016, Uganda had a total of 259 urban centres with a total

urban population of 7.5 million persons. Thus, 20.2 percent of the total population lived in urban areas. Kampala Capital City was the most populous urban centre with 1.5 million persons.

Table 2 gives the distribution of the population by age. The Table shows that the population of Uganda is quite young, with the proportion of children (below 15 years of age) being 47.9 percent, while the 'Older persons' (aged 60 years and above) constituted only 2.9 percent.

**Table 2: Population Distribution by Age, Sex, Residence, and Population Type, Uganda, 2014**

Age	Sex		Residence		Population Type		Total
	Male	Female	Rural	Urban	Household	Institutional	
0-4	3,173,950	2,957,078	4,950,513	1,180,515	6,107,155	23,873	6,131,028
5-9	2,834,456	2,717,222	4,557,328	994,350	5,532,230	19,448	5,551,678
10-14	2,462,789	2,457,654	4,024,478	895,965	4,850,926	69,517	4,920,443
15-19	1,917,797	2,038,836	3,052,854	903,779	3,850,134	106,499	3,956,633
20-24	1,442,455	1,743,137	2,263,734	921,858	3,093,846	91,746	3,185,592
25-29	1,143,467	1,342,709	1,743,019	743,157	2,434,180	51,996	2,486,176
30-34	908,447	1,043,292	1,429,283	522,456	1,914,351	37,388	1,951,739
35-39	726,355	809,482	1,148,883	386,954	1,512,237	23,600	1,535,837
40-44	617,034	655,383	991,874	280,543	1,252,338	20,079	1,272,417
45-49	452,081	469,043	728,958	192,166	909,783	11,341	921,124
50-54	371,126	436,977	657,004	151,099	797,368	10,735	808,103
55-59	224,765	255,519	394,952	85,332	475,744	4,540	480,284
60-64	195,283	244,770	369,504	70,549	434,218	5,835	440,053
65-69	136,107	165,043	257,208	43,942	299,351	1,799	301,150
70-74	115,862	161,374	237,097	40,139	273,582	3,654	277,236
75-79	69,095	81,378	128,636	21,837	149,567	906	150,473
80-84	51,871	79,398	110,736	20,533	127,984	3,285	131,269
85-89	21,572	30,204	43,246	8,530	50,735	1,041	51,776
90-94	15,125	22,046	29,989	7,182	34,339	2,832	37,171
95 and above	18,212	26,256	37,186	7,282	41,231	3,237	44,468
<b>Total</b>	<b>16,897,849</b>	<b>17,736,801</b>	<b>27,156,482</b>	<b>7,478,168</b>	<b>34,141,299</b>	<b>493,351</b>	<b>34,634,650</b>

## Characteristics of the Population

About 87 percent of the boys and girls of primary school going age (6-12 years) were attending school, while about 1 in every 10 children of primary school going age children had never been school. The Illiteracy status Rate was 72 percent among persons aged 10 years and above. Out of the 17.7 million persons of working age (aged 14 to 64 years), 13.8 million (78 percent) were working in the (Labour Force), with the most common occupation being subsistence farming (65%).

Vulnerability can be assessed at personal and household level. At personal level, vulnerability is a state of being in which a person is likely to be in a risky situation, suffering significant physical, emotional, or mental harm that may result in his/her human rights not being fulfilled (MoGLSD, 2004). The 2014 Census measured some of the dimensions of Child Vulnerability. The results show high levels of vulnerability as highlighted below;

- One in every eight (12.5%) of children aged 6 – 12 Years were not in school;
- Two out of every 25 (8%) children less than 18 years of age were orphaned;
- One in every 16 (6%) of the girls aged 12 to 17 years had already given birth;
- One in every 15 (6.5%) of the girls aged 12 – 17 had ever been in a marriage union;
- Seven out of every 10 Children (70%) aged less than five years did not have a Birth certificate.

There was a general improvement in the demographics of the population with the Total Fertility Rate falling to 5.8 children per woman while the infant Mortality Rate decreased to 53 deaths per 1,000 live births. The Life Expectancy at Birth also increased to 63.3 years

## Characteristics of the Households

The household population consisted of (99 percent of the total population.) The Census 2014 enumerated a total of 7.3 million households with a population of 34.1 million .This gave an Average Household Size of 4.7.

The 'Tadooba' remained the most common source of lighting being used by 52 percent of the households. Only one in every five households (20%) had access to electricity. On the other hand, Wood fuel was the most common fuel used for cooking, with only six percent (one in every 16) of the households using other fuels. Sanitation remains a challenge with only thirty percent of the households with unimproved toilet facilities. About 600,000 households did not have any toilet facility at all.

The majority of the households (69 percent) derived their livelihood from subsistence farming. Only 27% of the households depended on earned income. One in every nine households (11%) were having only one meal per day (for adults). Some of the households (11%) received remittances from abroad in cash or in kind. More than two thirds of the households (69%) had at least one member owning a Mobile phone. Ownership of a Mobile among persons aged 10

years and above was at 38 percent. The radio remains a dominant source of information and about 60 percent of the households owned a radio.

### **Housing Conditions**

The housing sector recorded a general improvement. Overall, 67 percent of households in Uganda resided in detached dwellings. However, nearly half (47%) households resided in dwellings with only one room for sleeping. There was also significant improvement in the materials used for construction of the dwellings. About 44% of the households resided in dwellings constructed with permanent wall material. The equivalent shares for roof and floor were 70 and 34 percent respectively.

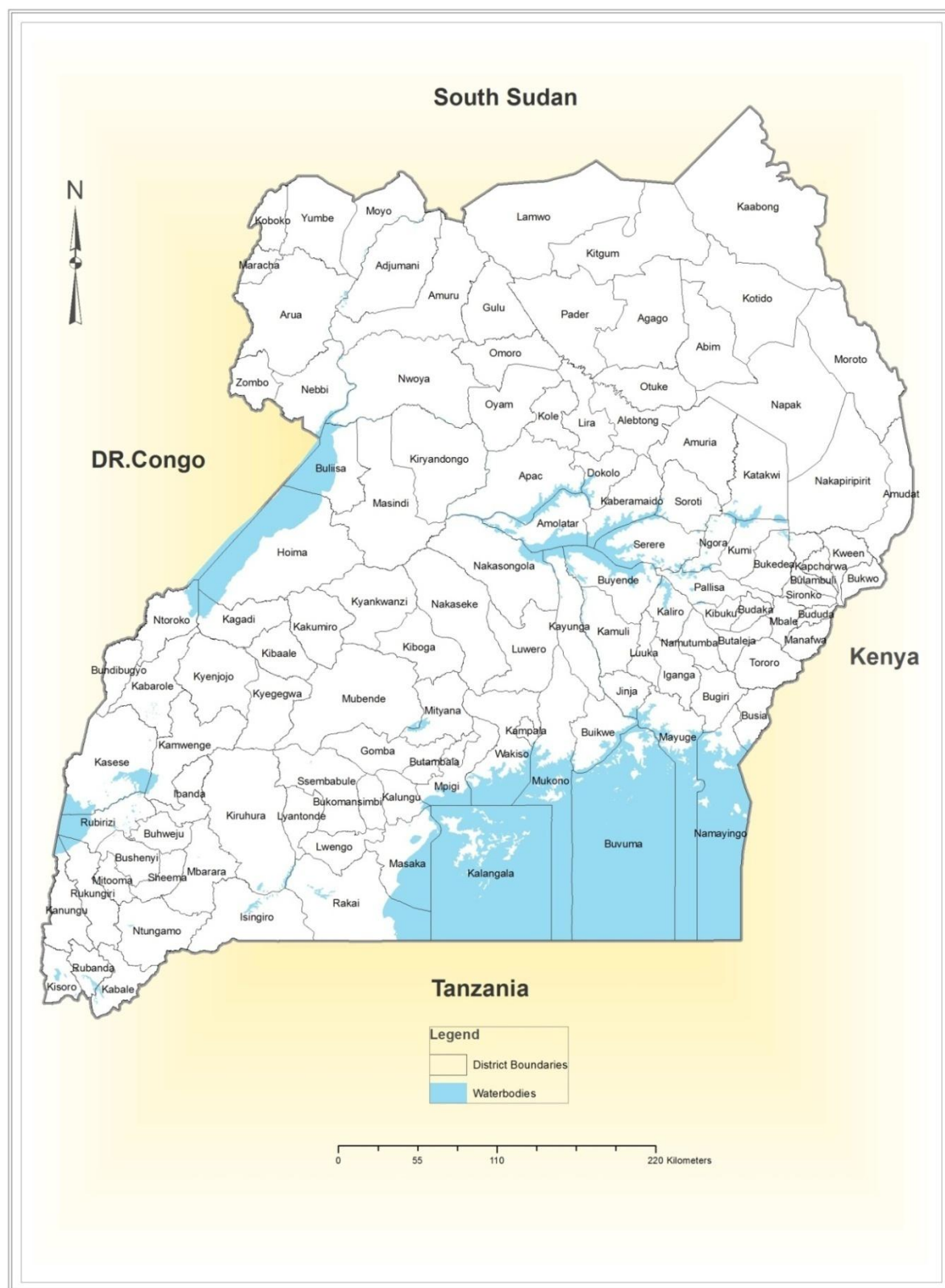
### **Agricultural Activities**

Agriculture has remained a dominant sector in the economy. The Census revealed that a total of 5.8 million households engage in agriculture. More than two thirds (69 percent) of households derived their livelihoods from subsistence farming as the main source of earning. In terms of employment, the majority of the working population (65 percent) were subsistence farmers.

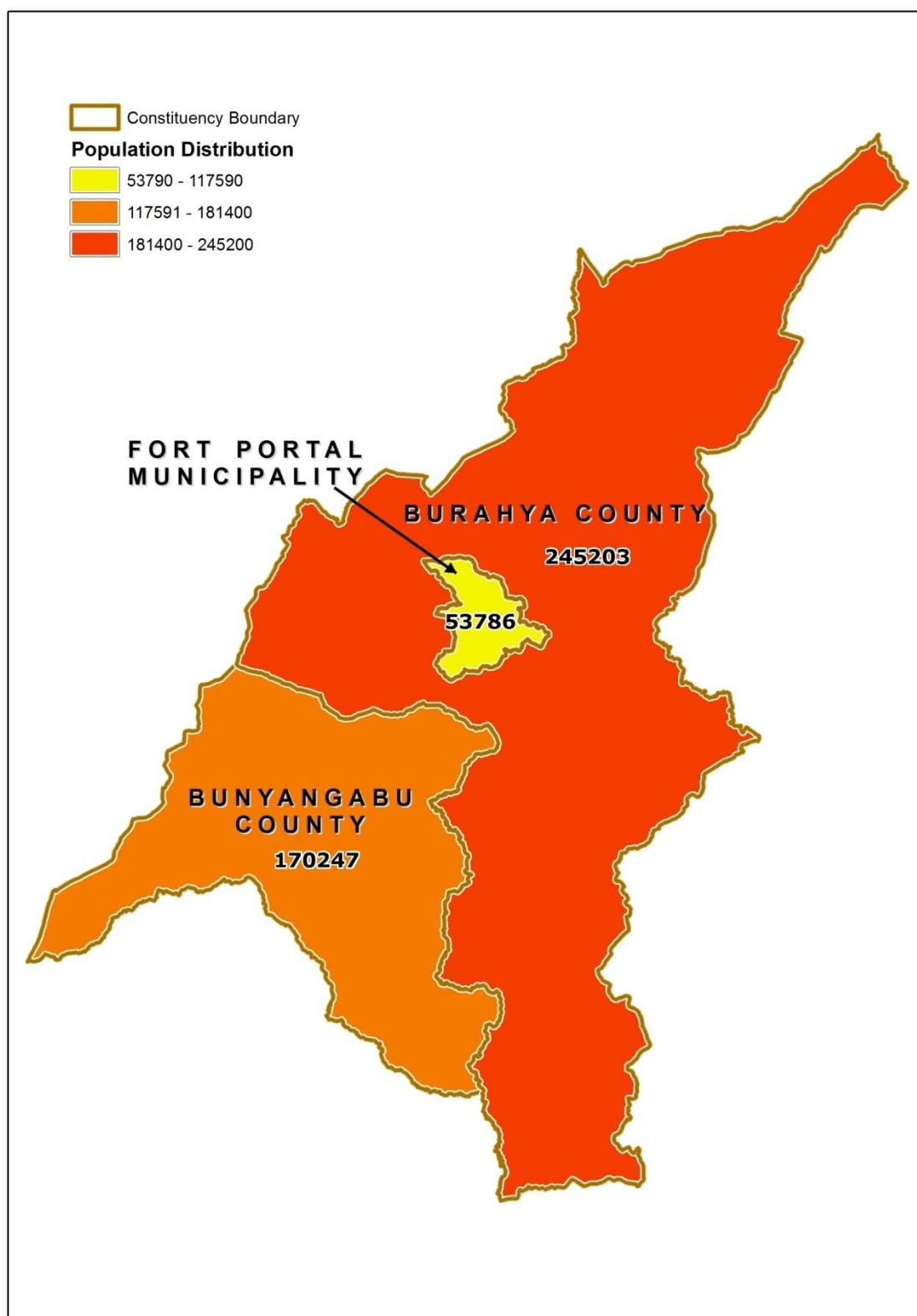
## POPULATION SIZE

**Table 3: Total population by age group and sex, Kabarole District, 2014**

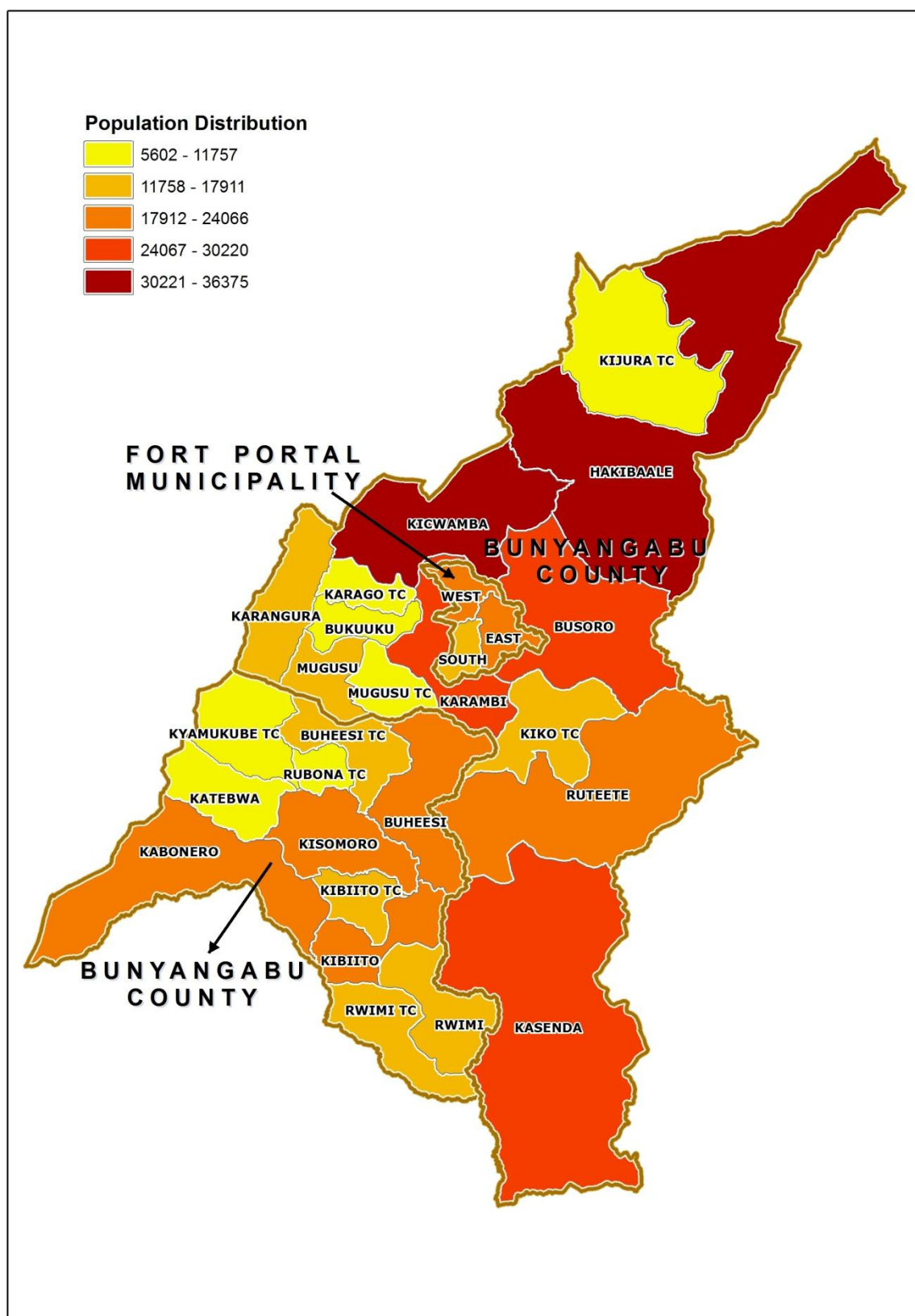
Age group	Male	Female	Total
0-9 years	78,371	73,203	151,574
10-19 years	57,970	57,939	115,909
20-39 years	64,445	67,081	131,526
40-59 years	22,933	24,347	47,280
60 years and above	9,929	13,018	22,947
<b>Total</b>	<b>233,648</b>	<b>235,588</b>	<b>469,236</b>

Map 1: Districts of Uganda as of 1<sup>st</sup> July 2016

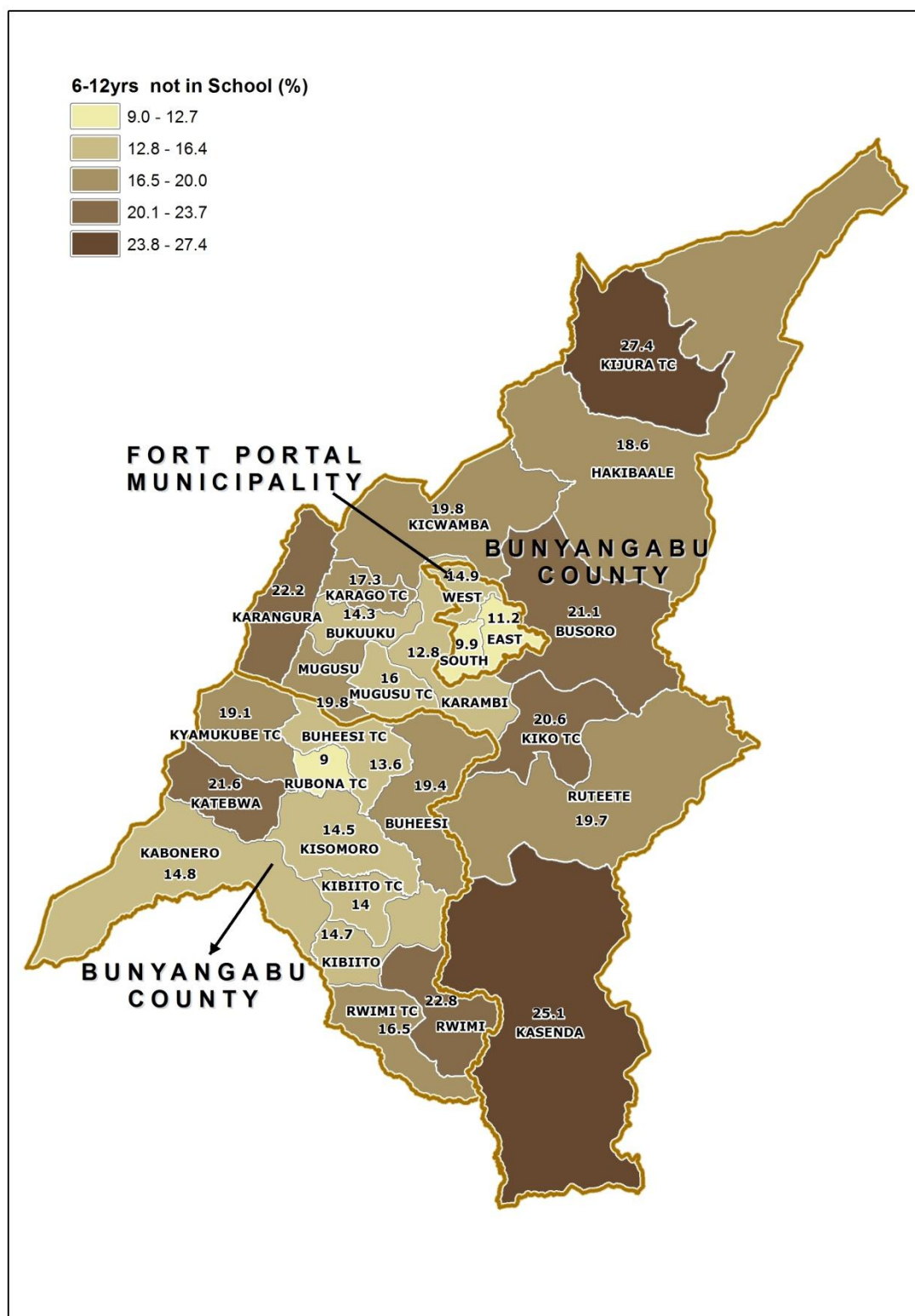


Map 2: Kabarole District Parliamentary Constituencies as of 1<sup>st</sup> July, 2016

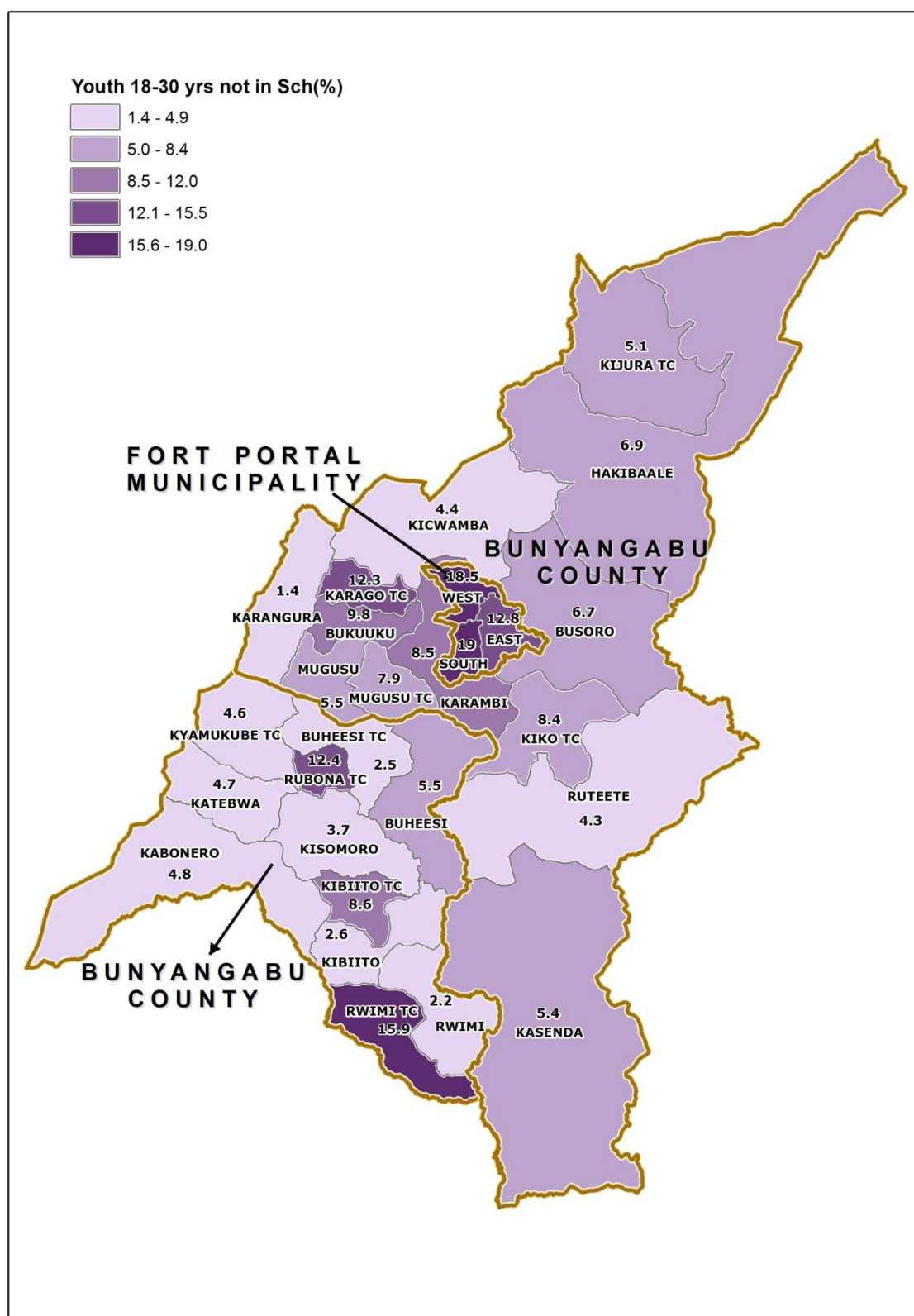
Map 3: Distribution of Population by Sub-county; Kabarole District, 2014



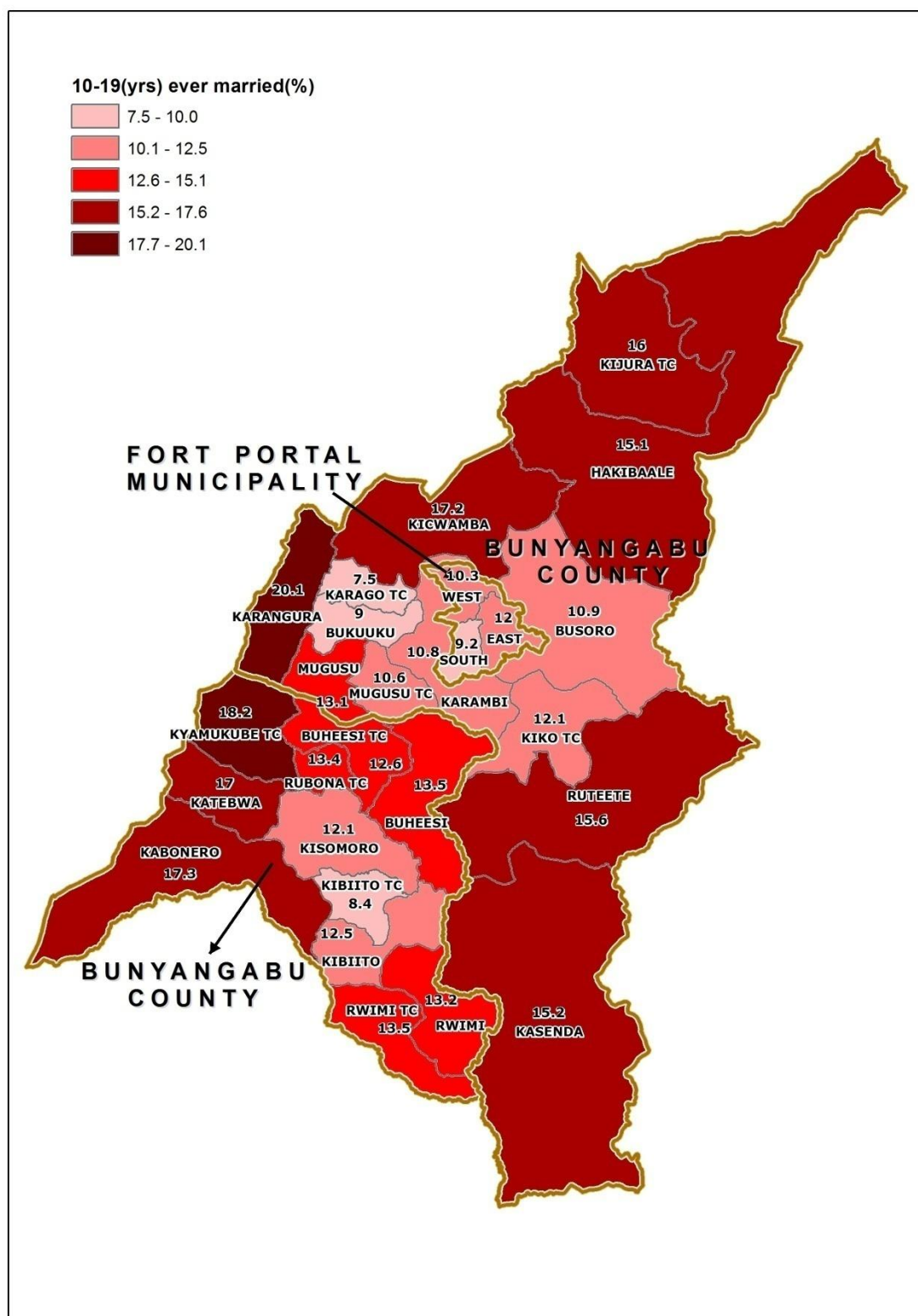
Map 4: Percentage Distribution of Population Aged 6-12 Years Not in School; Kabarole District, 2014



**Map 5: Percentage Distribution of Youth Population aged 18-30 Years, Not in School and Not Working; Kabarole District, 2014**

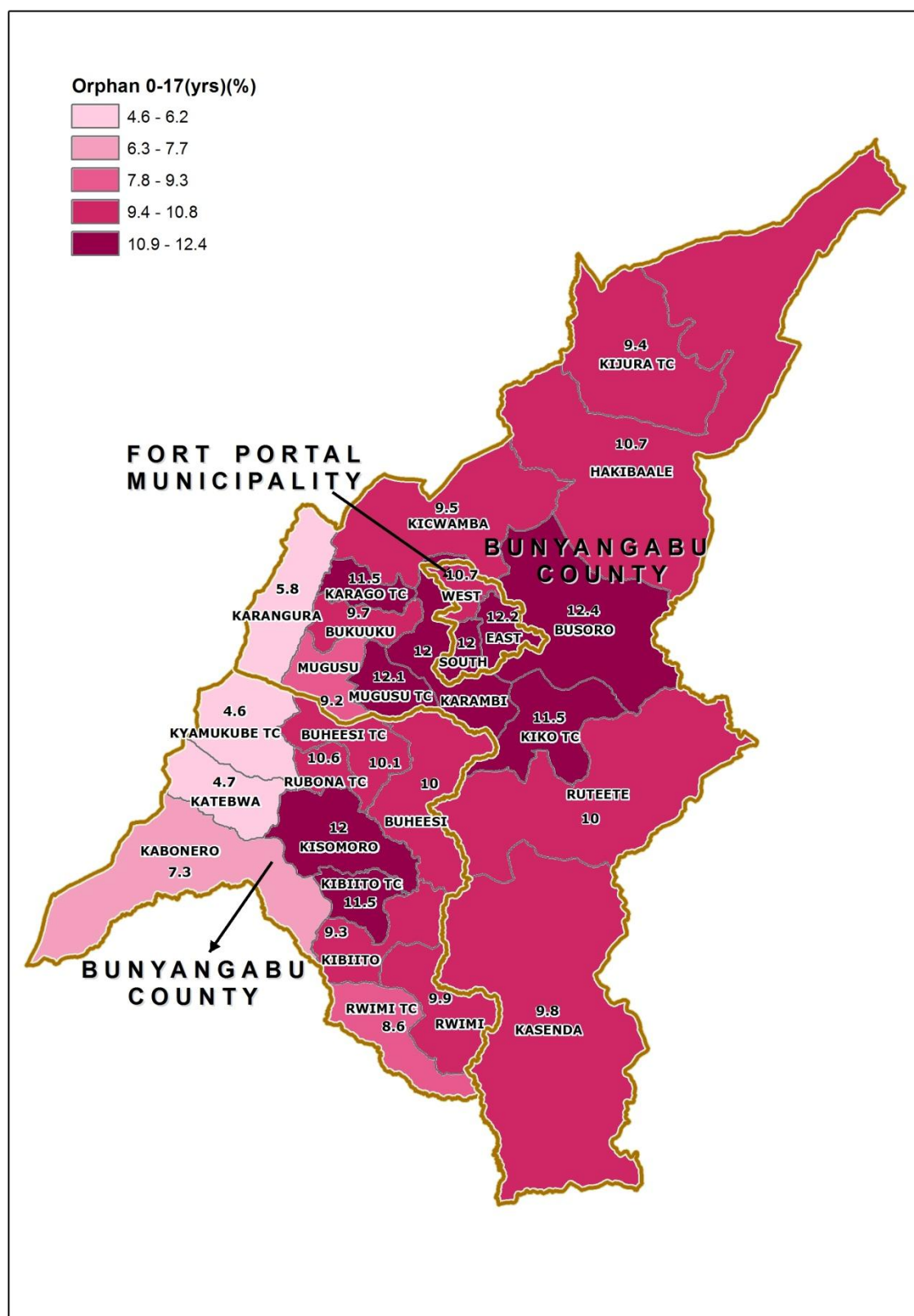


**Map 6: Percentage Distribution of Population aged 10-19 Years, Ever Married; Kabarole District, 2014**

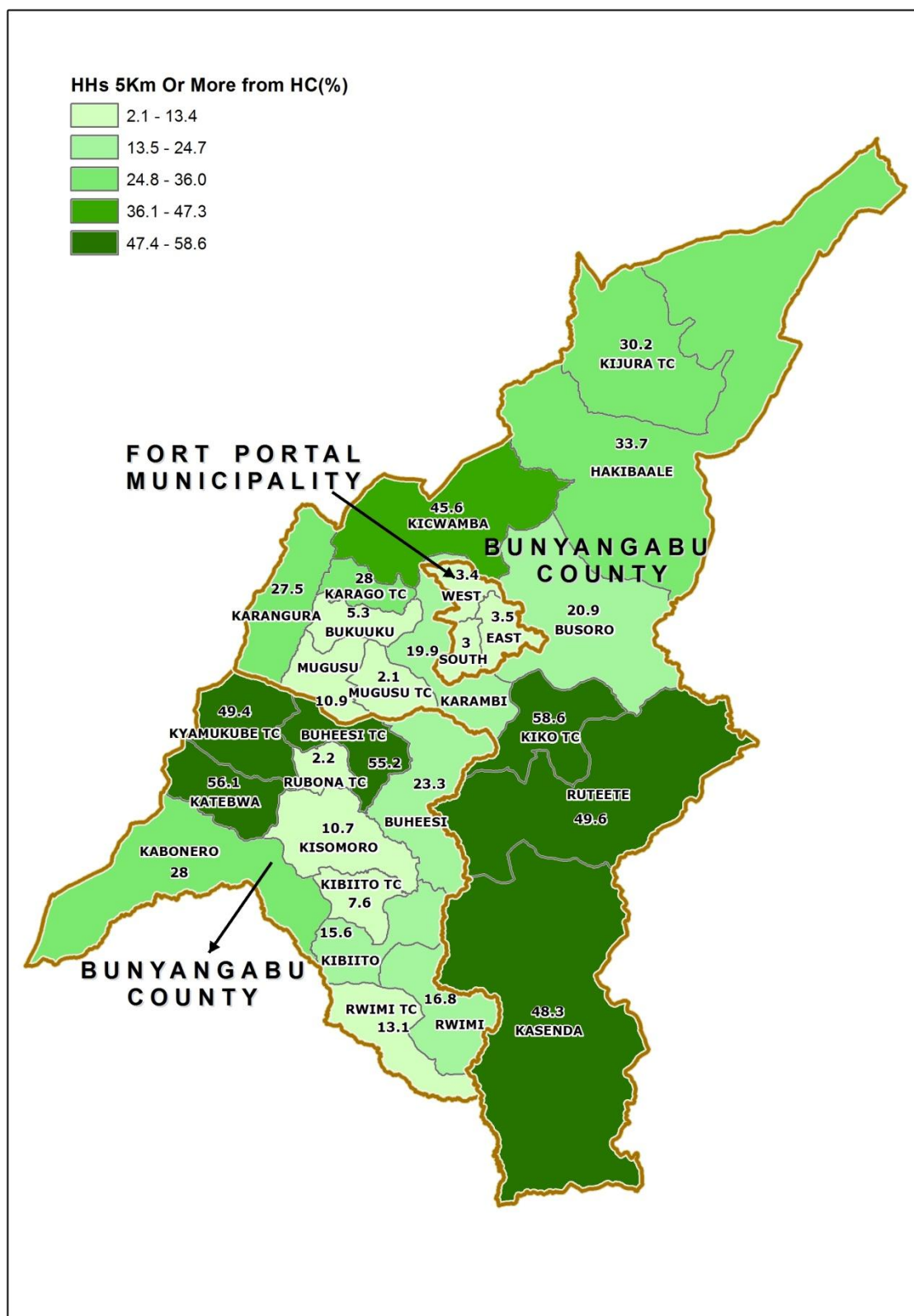




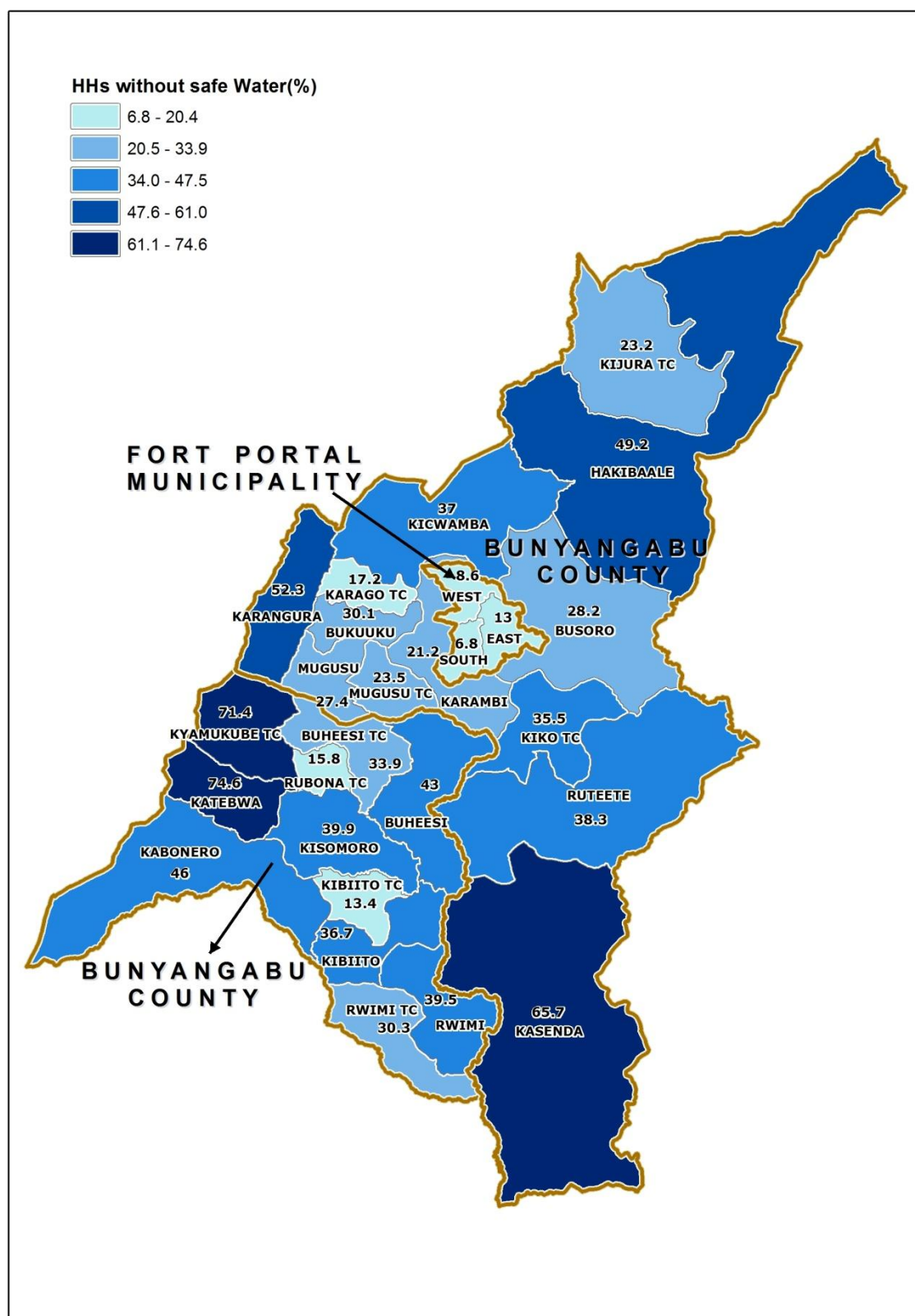
Map 7: Percentage Distribution of Orphans aged 0-17 Years; Kabarole District, 2014



**Map 8: Percentage Distribution of Households 5 Km and Over to the nearest Public Health Facility; Kabarole District, 2014**

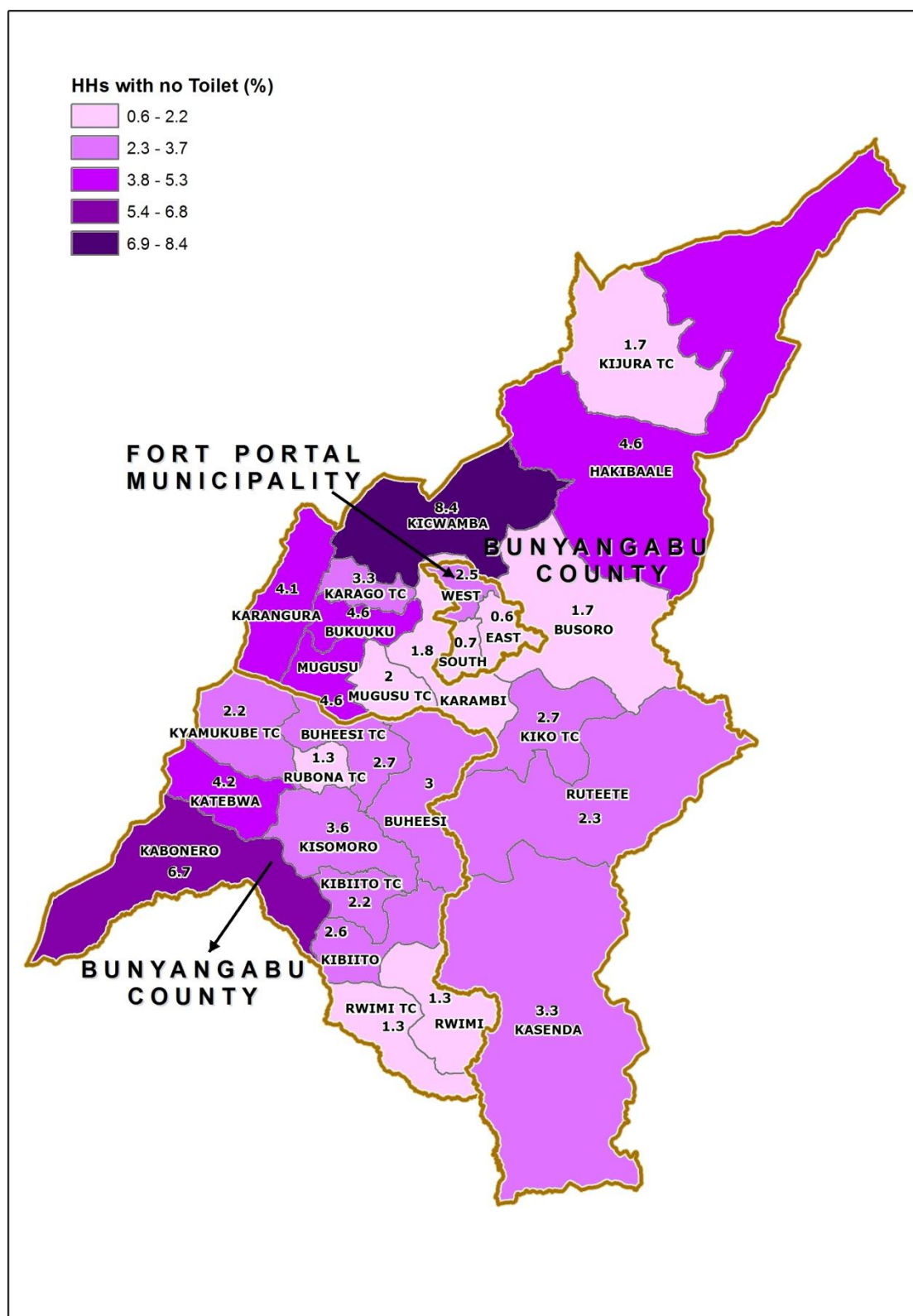


Map 9: Percentage Distribution of Households without access to Safe Water; Kabarole District, 2014

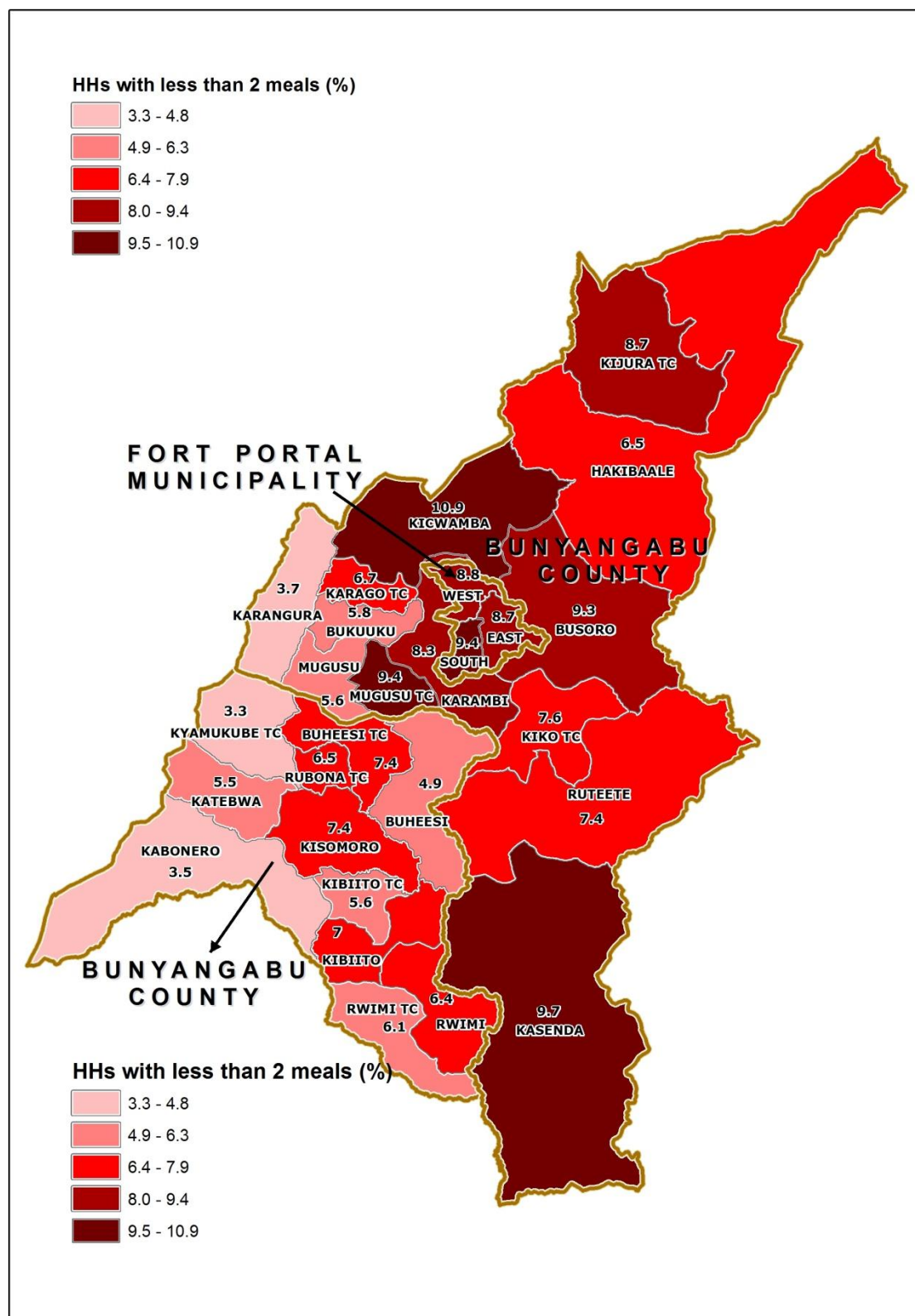




Map 10: Percentage Distribution of Households with no Toilet facility; Kabarole District, 2014



Map 11: Percentage Distribution of Households having less than 2 meals a day; Kabarole District, 2014



## **AREA SPECIFIC PROFILES**

## KABAROLE DISTRICT

### LIST OF TABLES

1	Population
2	Education
3	Illiteracy status
4	Ownership of a Birth Certificate
5	Parental Survival and Orphanhood
6	Disability
7	Marriage and Child Bearing
8	Working Status
9	Use of ICT
10	Housing Conditions
11	Access to Community Services
12	Household Health and Hygiene
13	Household Assets
14	Other Household Characteristics
15	Household Based Agricultural Activities

**1: POPULATION**

<b>1.1: Population Size</b>	<b>Number</b>	<b>Percent</b>
Total population	469,236	
Total male population	233,648	49.8
Total female population	235,588	50.2
Sex ratio (males per 100 females)	99.2	
<b>1.2: Households</b>	<b>Number</b>	<b>Percent</b>
Total households	107,204	
Households headed by males	78,373	73.1
Households headed by females	28,831	26.9
Households headed by children (aged 10-17 years)	726	0.7
Households headed by youth (aged 18-30 years)	32,440	30.3
Households headed by older persons (aged 60 years and above)	17,748	16.6
<b>1.3: Population by Age groups</b>	<b>Number</b>	<b>Percent</b>
Population aged 0-17 years	244,772	52.8
Population aged 18-30 years	109,355	23.6
Population aged 31-59 years	87,068	18.8
Population aged 60 years and over	22,549	4.9
<b>1.4: Population by Special Age groups</b>	<b>Number</b>	<b>Percent</b>
Population aged Less than one Year	15,330	3.3
Population aged 0-4 Years	79,493	17.1
Population aged 0-8 Years	138,458	29.9
Population aged 2-8 Years	108,263	23.3
Population aged 2-17 Years	214,577	46.3
Population aged 6-12 Years	94,172	20.3
Population aged 6-15 Years	128,789	27.8
Population aged 10-15 Years	72,028	15.5
Population aged 10-17 Years	93,567	20.2
Population aged 15-24 Years	97,164	21.0
Population aged 16-64 Years	224,688	48.5
Population aged 15-29 Years	132,359	28.5
Population aged 2 Years and Over	433,549	93.5
Population aged 10 Years and Over	312,539	67.4
Population aged 15 Years and Over	250,523	54.0
Population aged 18 Years and Over	218,972	47.2
Population aged 20 Years and Over	197,897	42.7
Population aged 65 Years and over	15,823	3.4

**2: EDUCATION**

<b>2.1: Non School attendance of</b>	<b>Number</b>	<b>Percent</b>
Persons aged 6-15 years not attending school	15,148	11.8
Males aged 6-15 years not attending school	8,608	13.2
Females aged 6-15 years not attending school	6,540	10.3
<b>2.2: Persons attending Primary school</b>	<b>Number</b>	<b>Percent</b>
Persons aged 6-12 years attending primary school	77,563	82.4
Males aged 6-12 years attending primary school	38,743	80.8
Females aged 6-12 years attending primary school	38,820	83.9
<b>2.3: Persons attending Secondary school</b>	<b>Number</b>	<b>Percent</b>
Persons aged 13-18 years attending secondary school	21,028	31.0
Males aged 13-18 years attending secondary school	10,021	29.6
Females aged 13-18 years attending secondary school	11,007	32.3
<b>2.4: Persons not in School and Highest Level Completed is below S.4</b>	<b>Number</b>	<b>Percent</b>
Persons aged 15 years and above whose highest level of education completed is below S.4	145,238	82.4
Males aged 15 years and above whose highest level of education completed is below S.4	71,089	81.0
Females aged 15 years and above whose highest level of education completed is below S.4	74,149	83.9
<b>2.5: Persons not in School and Highest Level Completed is "O" Level</b>	<b>Number</b>	<b>Percent</b>
Persons aged 18 years and above whose highest level of education completed is "O" level (S.4)	15,077	6.9
Males aged 18 years and above whose highest level of education completed is "O" level (S.4)	7,786	7.4
Females aged 18 years and above whose highest level of education completed is "O" level (S.4)	7,291	6.4
<b>2.6: Persons not in School and Highest Level Completed is "A" Level</b>	<b>Number</b>	<b>Percent</b>
Persons aged 20 years and above whose highest level of education completed is "A" level (S.6)	3,529	1.8
Males aged 20 years and above whose highest level of education completed is "A" level (S.6)	2,424	2.6
Females aged 20 years and above whose highest level of education completed is "A" level (S.6)	1,105	1.1

**3: ILLITERACY STATUS**

<b>3.1: Persons aged 18 years and above</b>	<b>Number</b>	<b>Percent</b>
Persons aged 18 years and above who are illiterate	53,901	24.6
Males aged 18 years and above who are illiterate	20,842	19.9
Females aged 18 years and above who are illiterate	33,059	28.9
<b>3.2: Other age groups</b>	<b>Number</b>	<b>Percent</b>
Persons aged 10-17 years who are illiterate	16,343	17.5
Persons aged 18-30 years who are illiterate	15,003	13.7
Persons aged 60 years and above who are illiterate	12,838	56.9

**4: OWNERSHIP OF A BIRTH CERTIFICATE**

<b>4.1: Children with Birth Certificates</b>	<b>Number</b>	<b>Percent</b>
Children less than 1 year who have a Birth Certificate	3,784	24.7
Children less than 5 years who have a Birth Certificate	24,504	30.8
Children 0-8 years who have a Birth Certificate	44,600	32.2
Children 0-17 years who have a Birth Certificate	76,617	32.7

**5: PARENTAL SURVIVAL AND ORPHANHOOD**

<b>5.1: Children 0-8 years</b>	<b>Number</b>	<b>Percent</b>
Children 0-8 years who have lost one parent	5,448	3.9
Children 0-8 years who have lost both parents	553	0.4
Children 0-8 years who have lost at least a parent (total number of orphans)	6,001	4.3
Children 0-8 years who have both parents	132,457	95.7
<b>5.2: All children (0-17 years)</b>	<b>Number</b>	<b>Percent</b>
Children 0-17 years who have lost one parent	20,752	8.5
Children 0-17 years who have lost both parents	3,693	1.5
Children 0-17 years who have lost at least a parent (total number of orphans)	24,445	10.0
Children 0-17 years who have both parents	220,327	90.0

**6: DISABILITY**

<b>6.1: Persons with a disability</b>	<b>Number</b>	<b>Percent</b>
Persons aged 2 years and above with a disability	53,263	12.3
Persons aged 2 years and above with a seeing disability	29,977	6.9
Persons aged 2 years and above with a hearing disability	14,049	3.2
Persons aged 2 years and above with a walking disability	20,100	4.6
Persons aged 2 years and above with a remembering disability	26,744	6.2
Persons aged 2 years and above with multiple disabilities	18,586	37.2
Children aged 2-17 years with a disability	9,349	4.4
Youth aged 18-30 years with a disability	7,964	7.3
Older persons aged 60 years and above with a disability	15,481	68.7

**7: MARRIAGE AND CHILDBEARING**

<b>7.1: Marital status of the population</b>	<b>Number</b>	<b>Percent</b>
Persons aged 10 years and above who are married	69,048	42.9
Persons aged 18 years and above who are married	66,264	58.0
Females aged 50 years and above who are widowed	9,566	41.4
Females aged 10-17 years who have ever been married	3,243	7.0
Females aged 10-19 years who have ever been married	7,666	13.4
<b>7.2: Females who have had a birth</b>	<b>Number</b>	<b>Percent</b>
Females aged 12-17 years who have given birth	3,190	9.3
Females aged 12-19 years who have given birth	7,797	17.3

**8: WORKING STATUS**

<b>8.1: Working persons</b>	<b>Number</b>	<b>Percent</b>
Persons aged 10-15 years who were working	25,358	35.2
Persons aged 10-17 years who were working	36,811	39.3
Persons aged 18-30 years who were working	90,137	82.4
Persons aged 16-64 years who were working	190,187	84.6
Persons aged 18 years and above who were working	188,715	86.2
Persons aged 60 years and above who were working	15,907	70.5
<b>8.2: Youths Not working and not in school</b>		
Youths (Persons aged 18-30 years) who were neither working nor in school	6,523	6.0



**9: USE OF ICT**

<b>9.1: Mobile phone ownership (10 years and above)</b>	<b>Number</b>	<b>Percent</b>
Persons aged 10 years and above that own at least one mobile phone	135,327	43.3
Males aged 10 years and above that own at least one mobile phone	71,505	47.1
Females aged 10 years and above that own at least one mobile phone	63,822	39.7
<b>9.2: Mobile phone ownership (18-30 years)</b>	<b>Number</b>	<b>Percent</b>
Persons aged 18-30 years and above that own at least one mobile phone	63,994	58.5
Males aged 18-30 years and above that own at least one mobile phone	33,674	63.9
Females aged 18-30 years and above that own at least one mobile phone	30,320	53.5
<b>9.3: Internet Usage (10 years and above)</b>	<b>Number</b>	<b>Percent</b>
Persons aged 10 years and above that use internet	23,725	7.6
Males aged 10 years and above that use internet	14,476	9.5
Females aged 10 years and above that use internet	9,249	5.8
<b>9.4: Internet Usage (18-30 years)</b>	<b>Number</b>	<b>Percent</b>
Persons aged 18-30 years that use internet	14,291	13.1
Males aged 18-30 years that use internet	8,672	16.5
Females aged 18-30 years that use internet	5,619	9.9

**10: HOUSING CONDITIONS**

<b>10.1: Construction Materials For the Dwelling Units</b>	<b>Number</b>	<b>Percent</b>
Households living in dwelling units constructed using permanent roof materials	104,087	97.1
Households living in dwelling units constructed using permanent wall materials	28,586	26.7
Households living in dwelling units constructed using permanent floor materials	28,580	26.7
<b>10.2: Status of Dwelling Units</b>	<b>Number</b>	<b>Percent</b>
Households living in semi-permanent dwelling units	81,750	76.3
Households living in temporary dwelling units	3,026	2.8

**11: ACCESS TO COMMUNITY SERVICES**

<b>11.1: Access to a Primary school</b>	<b>Number</b>	<b>Percent</b>
Households that are 5 km or more to the nearest primary school, <u>whether public or private</u>	8,432	7.9
Households that are 5 km or more to the nearest <u>public</u> primary school	12,640	11.8
<b>11.2: Access to a Secondary school</b>	<b>Number</b>	<b>Percent</b>
Households that are 5 km or more to the nearest secondary school, <u>whether public or private</u>	31,279	29.2
Households that are 5 km or more to the nearest <u>public</u> secondary school	49,567	46.2
<b>11.3: Access to a Health Facility</b>	<b>Number</b>	<b>Percent</b>
Households that are 5 km or more to the nearest health facility, <u>whether public or private</u>	16,692	15.6
Households that are 5 km or more to the nearest <u>public</u> health facility	26,886	25.1
<b>11.4: Access to a Police post /Police station</b>	<b>Number</b>	<b>Percent</b>
Households that are 5 km or more to the nearest Police Post/Police Station	35,046	32.7

**12: HOUSEHOLD HEALTH AND HYGIENE**

<b>12.1:Ownership of Mosquito nets</b>	<b>Number</b>	<b>Percent</b>
Households that own at least a mosquito net	101,176	94.4
Households that own at least a mosquito net that was received free (Government /NGO)	98,110	97.0
<b>12.2: Source Of Water For Drinking</b>	<b>Number</b>	<b>Percent</b>
Households that have access to piped water	24,504	22.9
Households that use a bore hole	25,314	23.6
<b>12.3:Ownership of a Toilet facility</b>	<b>Number</b>	<b>Percent</b>
Households without any toilet facility	2,374	2.2
<b>12.4: Other environmental conditions</b>	<b>Number</b>	<b>Percent</b>
Households that <u>properly</u> dispose off solid waste	36,717	34.2
Households which are not living in decent dwellings	103,477	96.5

**13: HOUSEHOLD ASSETS**

<b>13.1: Owner occupied Dwellings</b>	<b>Number</b>	<b>Percent</b>
Households that are owner occupied	77,768	72.5
Male headed households that are owner occupied	57,610	73.5
Female headed households that are owner occupied	20,158	69.9
<b>13.2: Movable Assets</b>	<b>Number</b>	<b>Percent</b>
Households that own a television	11,106	10.4
Households that own a computer	2,907	2.7
Households that own a bicycle	30,805	28.7
Households that own a radio	79,496	74.2

**14: OTHER HOUSEHOLD CHARACTERISTICS**

<b>14.1: Main source of information</b>	<b>Number</b>	<b>Percent</b>
Households whose main source of information is a radio	78,077	72.8
Households whose main source of information is a community announcer	1,920	1.8
Households whose main source of information is a telephone	4,777	4.5
<b>14.2: Household Economy and Welfare</b>	<b>Number</b>	<b>Percent</b>
Households that received remittances from abroad in the last 12 months	11,500	10.7
Households where any member possesses a bank account	26,928	25.1
Households that depend on subsistence farming as a main source of livelihood	65,877	61.5
Households with at least one member engaged in a non-agricultural household based enterprise	54,336	85.4
Households where (members aged 5 years and above) consume less than two meals in a day	8,009	7.5
<b>14.3: Source of Energy for lighting</b>	<b>Number</b>	<b>Percent</b>
Households that have access to electricity	19,567	18.3
Households that use Tadooba for lighting	67,644	63.1

**15: HOUSEHOLD BASED AGRICULTURAL ACTIVITIES**

<b>15.1: Household based Agricultural activities</b>	<b>Number</b>	<b>Percent</b>
Households engaged in crop growing	86,120	80.3
Households engaged in maize growing	42,203	39.4
Households engaged in coffee growing	7,362	6.9
Households engaged in growing of beans	69,071	64.4
Households engaged in growing of millet	5,057	4.7
Households engaged in growing of sweet potatoes	32,447	30.3
Households engaged in growing of matooke	53,650	50.0
Households engaged livestock farming	64,285	60.0
Households engaged in either crop growing or livestock farming	89,535	83.5

## FORT PORTAL MUNICIPALITY CONSTITUENCY

### LIST OF TABLES

1	Population
2	Education
3	Illiteracy status
4	Ownership of a Birth Certificate
5	Parental Survival and Orphanhood
6	Disability
7	Marriage and Child Bearing
8	Working Status
9	Use of ICT
10	Housing Conditions
11	Access to Community Services
12	Household Health and Hygiene
13	Household Assets
14	Other Household Characteristics
15	Household Based Agricultural Activities

**1: POPULATION**

<b>1.1: Population Size</b>	<b>Number</b>	<b>Percent</b>
Total population	53,786	
Total male population	26,429	51.1
Total female population	27,357	50.9
Sex ratio (males per 100 females)	96.6	
<b>1.2: Households</b>	<b>Number</b>	<b>Percent</b>
Total households	14,775	
Households headed by males	9,776	66.2
Households headed by females	4,999	33.8
Households headed by children (aged 10-17 years)	163	1.1
Households headed by youth (aged 18-30 years)	5,801	39.3
Households headed by older persons (aged 60 years and above)	1,478	10.0
<b>1.3: Population by Age groups</b>	<b>Number</b>	<b>Percent</b>
Population aged 0-17 years	21,677	42.9
Population aged 18-30 years	16,418	32.5
Population aged 31-59 years	10,560	20.9
Population aged 60 years and over	1,903	3.8
<b>1.4: Population by Special Age groups</b>	<b>Number</b>	<b>Percent</b>
Population aged Less than one Year	1,528	3.0
Population aged 0-4 Years	7,248	14.3
Population aged 0-8 Years	11,892	23.5
Population aged 2-8 Years	8,948	17.7
Population aged 2-17 Years	18,733	37.1
Population aged 6-12 Years	7,535	14.9
Population aged 6-15 Years	10,843	21.4
Population aged 10-15 Years	6,349	12.6
Population aged 10-17 Years	8,795	17.4
Population aged 15-24 Years	13,149	26.0
Population aged 16-64 Years	29,966	59.3
Population aged 15-29 Years	18,689	37.0
Population aged 2 Years and Over	47,614	94.2
Population aged 10 Years and Over	37,676	74.5
Population aged 15 Years and Over	32,331	63.9
Population aged 18 Years and Over	28,881	57.1
Population aged 20 Years and Over	26,064	51.6
Population aged 65 Years and over	1,361	2.7

**2: EDUCATION**

<b>2.1: Non School attendance of</b>	<b>Number</b>	<b>Percent</b>
Persons aged 6-15 years not attending school	909	8.4
Males aged 6-15 years not attending school	408	7.9
Females aged 6-15 years not attending school	501	8.9
<b>2.2: Persons attending Primary school</b>	<b>Number</b>	<b>Percent</b>
Persons aged 6-12 years attending primary school	6,675	88.6
Males aged 6-12 years attending primary school	3,290	88.0
Females aged 6-12 years attending primary school	3,385	89.2
<b>2.3: Persons attending Secondary school</b>	<b>Number</b>	<b>Percent</b>
Persons aged 13-18 years attending secondary school	3,415	47.1
Males aged 13-18 years attending secondary school	1,494	48.5
Females aged 13-18 years attending secondary school	1,921	46.1
<b>2.4: Persons not in School and Highest Level Completed is below S.4</b>	<b>Number</b>	<b>Percent</b>
Persons aged 15 years and above whose highest level of education completed is below S.4	13,894	57.7
Males aged 15 years and above whose highest level of education completed is below S.4	6,094	54.6
Females aged 15 years and above whose highest level of education completed is below S.4	7,800	60.5
<b>2.5: Persons not in School and Highest Level Completed is "O" Level</b>	<b>Number</b>	<b>Percent</b>
Persons aged 18 years and above whose highest level of education completed is "O" level (S.4)	3,603	12.5
Males aged 18 years and above whose highest level of education completed is "O" level (S.4)	1,665	12.2
Females aged 18 years and above whose highest level of education completed is "O" level (S.4)	1,938	12.7
<b>2.6: Persons not in School and Highest Level Completed is "A" Level</b>	<b>Number</b>	<b>Percent</b>
Persons aged 20 years and above whose highest level of education completed is "A" level (S.6)	1,377	5.3
Males aged 20 years and above whose highest level of education completed is "A" level (S.6)	867	7.0
Females aged 20 years and above whose highest level of education completed is "A" level (S.6)	510	3.7

**3: ILLITERACY STATUS**

<b>3.1: Persons aged 18 years and above</b>	<b>Number</b>	<b>Percent</b>
Persons aged 18 years and above who are illiterate	2,844	9.8
Males aged 18 years and above who are illiterate	1,082	8.0
Females aged 18 years and above who are illiterate	1,762	11.5
<b>3.2: Other age groups</b>	<b>Number</b>	<b>Percent</b>
Persons aged 10-17 years who are illiterate	568	6.5
Persons aged 18-30 years who are illiterate	985	6.0
Persons aged 60 years and above who are illiterate	700	36.8

**4: OWNERSHIP OF A BIRTH CERTIFICATE**

<b>4.1: Children with Birth Certificates</b>	<b>Number</b>	<b>Percent</b>
Children less than 1 year who have a Birth Certificate	616	40.3
Children less than 5 years who have a Birth Certificate	3,533	48.7
Children 0-8 years who have a Birth Certificate	5,988	50.4
Children 0-17 years who have a Birth Certificate	10,431	51.1

**5: PARENTAL SURVIVAL AND ORPHANHOOD**

<b>5.1: Children 0-8 years</b>	<b>Number</b>	<b>Percent</b>
Children 0-8 years who have lost one parent	405	3.4
Children 0-8 years who have lost both parents	56	0.5
Children 0-8 years who have lost at least a parent (total number of orphans)	461	3.9
Children 0-8 years who have both parents	11,431	96.1
<b>5.2: All children (0-17 years)</b>	<b>Number</b>	<b>Percent</b>
Children 0-17 years who have lost one parent	2,029	9.4
Children 0-17 years who have lost both parents	481	2.2
Children 0-17 years who have lost at least a parent (total number of orphans)	2,510	11.6
Children 0-17 years who have both parents	19,167	88.4



**6: DISABILITY**

<b>6.1: Persons with a disability</b>	<b>Number</b>	<b>Percent</b>
Persons aged 2 years and above with a disability	4,564	9.6
Persons aged 2 years and above with a seeing disability	2,699	5.7
Persons aged 2 years and above with a hearing disability	948	2.0
Persons aged 2 years and above with a walking disability	1,572	3.3
Persons aged 2 years and above with a remembering disability	1,936	4.1
Persons aged 2 years and above with multiple disabilities	1,326	30.8
Children aged 2-17 years with a disability	717	3.8
Youth aged 18-30 years with a disability	873	5.3
Older persons aged 60 years and above with a disability	1,264	66.4

**7: MARRIAGE AND CHILDBEARING**

<b>7.1: Marital status of the population</b>	<b>Number</b>	<b>Percent</b>
Persons aged 10 years and above who are married	7,523	37.3
Persons aged 18 years and above who are married	7,289	47.7
Females aged 50 years and above who are widowed	884	42.4
Females aged 10-17 years who have ever been married	276	5.7
Females aged 10-19 years who have ever been married	682	10.5
<b>7.2: Females who have had a birth</b>	<b>Number</b>	<b>Percent</b>
Females aged 12-17 years who have given birth	289	7.5
Females aged 12-19 years who have given birth	751	13.8

**8: WORKING STATUS**

<b>8.1: Working persons</b>	<b>Number</b>	<b>Percent</b>
Persons aged 10-15 years who were working	857	13.5
Persons aged 10-17 years who were working	1,634	18.6
Persons aged 18-30 years who were working	11,092	67.6
Persons aged 16-64 years who were working	21,800	72.7
Persons aged 18 years and above who were working	21,664	75.0
Persons aged 60 years and above who were working	1,054	55.4
<b>8.2: Youths Not working and not in school</b>		
Youths (Persons aged 18-30 years) who were neither working nor in school	1,630	9.9

**9: USE OF ICT**

<b>9.1: Mobile phone ownership (10 years and above)</b>	<b>Number</b>	<b>Percent</b>
Persons aged 10 years and above that own at least one mobile phone	25,700	68.2
Males aged 10 years and above that own at least one mobile phone	12,442	71.0
Females aged 10 years and above that own at least one mobile phone	13,258	65.8
<b>9.2: Mobile phone ownership (18-30 years)</b>	<b>Number</b>	<b>Percent</b>
Persons aged 18-30 years and above that own at least one mobile phone	13,543	82.5
Males aged 18-30 years and above that own at least one mobile phone	6,355	84.7
Females aged 18-30 years and above that own at least one mobile phone	7,188	80.6
<b>9.3: Internet Usage (10 years and above)</b>	<b>Number</b>	<b>Percent</b>
Persons aged 10 years and above that use internet	9,599	25.5
Males aged 10 years and above that use internet	5,465	31.2
Females aged 10 years and above that use internet	4,134	20.5
<b>9.4: Internet Usage (18-30 years)</b>	<b>Number</b>	<b>Percent</b>
Persons aged 18-30 years that use internet	5,835	35.5
Males aged 18-30 years that use internet	3,227	43.0
Females aged 18-30 years that use internet	2,608	29.3

**10: HOUSING CONDITIONS**

<b>10.1: Construction Materials For the Dwelling Units</b>	<b>Number</b>	<b>Percent</b>
Households living in dwelling units constructed using permanent roof materials	14,718	99.6
Households living in dwelling units constructed using permanent wall materials	9,257	62.7
Households living in dwelling units constructed using permanent floor materials	10,317	69.8
<b>10.2: Status of Dwelling Units</b>	<b>Number</b>	<b>Percent</b>
Households living in semi-permanent dwelling units	5,957	40.3
Households living in temporary dwelling units	49	0.3

**11: ACCESS TO COMMUNITY SERVICES**

<b>11.1: Access to a Primary school</b>	<b>Number</b>	<b>Percent</b>
Households that are 5 km or more to the nearest primary school, <u>whether public or private</u>	208	1.4
Households that are 5 km or more to the nearest <u>public</u> primary school	378	2.6
<b>11.2: Access to a Secondary school</b>	<b>Number</b>	<b>Percent</b>
Households that are 5 km or more to the nearest secondary school, <u>whether public or private</u>	116	0.8
Households that are 5 km or more to the nearest <u>public</u> secondary school	391	2.6
<b>11.3: Access to a Health Facility</b>	<b>Number</b>	<b>Percent</b>
Households that are 5 km or more to the nearest health facility, <u>whether public or private</u>	271	1.8
Households that are 5 km or more to the nearest <u>public</u> health facility	486	3.3
<b>11.4: Access to a Police post /Police station</b>	<b>Number</b>	<b>Percent</b>
Households that are 5 km or more to the nearest Police Post/Police Station	562	3.8

**12: HOUSEHOLD HEALTH AND HYGIENE**

<b>12.1:Ownership of Mosquito nets</b>	<b>Number</b>	<b>Percent</b>
Households that own at least a mosquito net	13,689	92.6
Households that own at least a mosquito net that was received free (Government /NGO)	11,978	87.5
<b>12.2: Source Of Water For Drinking</b>	<b>Number</b>	<b>Percent</b>
Households that have access to piped water	10,846	73.4
Households that use a bore hole	1,964	13.3
<b>12.3:Ownership of a Toilet facility</b>	<b>Number</b>	<b>Percent</b>
Households without any toilet facility	95	0.6
<b>12.4: Other environmental conditions</b>	<b>Number</b>	<b>Percent</b>
Households that <u>properly</u> dispose off solid waste	8,526	57.7
Households which are not living in decent dwellings	12,958	87.7

**13: HOUSEHOLD ASSETS**

<b>13.1: Owner occupied Dwellings</b>	<b>Number</b>	<b>Percent</b>
Households that are owner occupied	5,463	37.0
Male headed households that are owner occupied	3,624	37.1
Female headed households that are owner occupied	1,839	36.8
<b>13.2: Movable Assets</b>	<b>Number</b>	<b>Percent</b>
Households that own a television	5,595	37.9
Households that own a computer	1,634	11.1
Households that own a bicycle	2,306	15.6
Households that own a radio	10,925	73.9

**14: OTHER HOUSEHOLD CHARACTERISTICS**

<b>14.1: Main source of information</b>	<b>Number</b>	<b>Percent</b>
Households whose main source of information is a radio	9,413	63.7
Households whose main source of information is a community announcer	120	0.8
Households whose main source of information is a telephone	1,540	10.4
<b>14.2: Household Economy and Welfare</b>	<b>Number</b>	<b>Percent</b>
Households that received remittances from abroad in the last 12 months	2,851	19.3
Households where any member possesses a bank account	7,718	52.2
Households that depend on subsistence farming as a main source of livelihood	1,826	12.4
Households with at least one member engaged in a non-agricultural household based enterprise	11,110	85.1
Households where (members aged 5 years and above) consume less than two meals in a day	1,326	9.0
<b>14.3: Source of Energy for lighting</b>	<b>Number</b>	<b>Percent</b>
Households that have access to electricity	8,251	55.8
Households that use Tadooba for lighting	2,888	19.5

**15: HOUSEHOLD BASED AGRICULTURAL ACTIVITIES**

<b>15.1: Household based Agricultural activities</b>	<b>Number</b>	<b>Percent</b>
Households engaged in crop growing	5,608	37.96
Households engaged in maize growing	2,110	14.28
Households engaged in coffee growing	52	0.35
Households engaged in growing of beans	3,791	25.66
Households engaged in growing of millet	104	0.70
Households engaged in growing of sweet potatoes	2,509	16.98
Households engaged in growing of matooke	3,928	26.59
Households engaged livestock farming	4,441	30.06
Households engaged in either crop growing or livestock farming	6,835	46.26

## BUNYANGABU COUNTY CONSTITUENCY

### LIST OF TABLES

1	Population
2	Education
3	Illiteracy status
4	Ownership of a Birth Certificate
5	Parental Survival and Orphanhood
6	Disability
7	Marriage and Child Bearing
8	Working Status
9	Use of ICT
10	Housing Conditions
11	Access to Community Services
12	Household Health and Hygiene
13	Household Assets
14	Other Household Characteristics
15	Household Based Agricultural Activities

**1: POPULATION**

<b>1.1: Population Size</b>	<b>Number</b>	<b>Percent</b>
Total population	170,247	
Total male population	84,033	49.4
Total female population	86,214	50.6
Sex ratio (males per 100 females)	97.5	
<b>1.2: Households</b>	<b>Number</b>	<b>Percent</b>
Total households	36,068	
Households headed by males	26,761	74.2
Households headed by females	9,307	25.8
Households headed by children (aged 10-17 years)	209	0.6
Households headed by youth (aged 18-30 years)	9,774	27.1
Households headed by older persons (aged 60 years and above)	6,604	18.3
<b>1.3: Population by Age groups</b>	<b>Number</b>	<b>Percent</b>
Population aged 0-17 years	94,248	55.8
Population aged 18-30 years	36,182	21.4
Population aged 31-59 years	30,243	17.9
Population aged 60 years and over	8,232	4.9
<b>1.4: Population by Special Age groups</b>	<b>Number</b>	<b>Percent</b>
Population aged Less than one Year	5,884	3.5
Population aged 0-4 Years	30,631	18.1
Population aged 0-8 Years	53,926	31.9
Population aged 2-8 Years	42,327	25.1
Population aged 2-17 Years	82,649	48.9
Population aged 6-12 Years	36,863	21.8
Population aged 6-15 Years	49,867	29.5
Population aged 10-15 Years	27,498	16.3
Population aged 10-17 Years	35,316	20.9
Population aged 15-24 Years	33,376	19.8
Population aged 16-64 Years	76,710	45.4
Population aged 15-29 Years	44,942	26.6
Population aged 2 Years and Over	157,306	93.1
Population aged 10 Years and Over	109,973	65.1
Population aged 15 Years and Over	86,192	51.0
Population aged 18 Years and Over	74,657	44.2
Population aged 20 Years and Over	67,379	39.9
Population aged 65 Years and over	5,765	3.4

**2: EDUCATION**

<b>2.1: Non School attendance of</b>	<b>Number</b>	<b>Percent</b>
Persons aged 6-15 years not attending school	5,315	10.7
Males aged 6-15 years not attending school	3,127	12.3
Females aged 6-15 years not attending school	2,188	9.0
<b>2.2: Persons attending Primary school</b>	<b>Number</b>	<b>Percent</b>
Persons aged 6-12 years attending primary school	30,753	83.4
Males aged 6-12 years attending primary school	15,308	81.6
Females aged 6-12 years attending primary school	15,445	85.4
<b>2.3: Persons attending Secondary school</b>	<b>Number</b>	<b>Percent</b>
Persons aged 13-18 years attending secondary school	7,222	28.9
Males aged 13-18 years attending secondary school	3,571	28.0
Females aged 13-18 years attending secondary school	3,651	29.9
<b>2.4: Persons not in School and Highest Level Completed is below S.4</b>	<b>Number</b>	<b>Percent</b>
Persons aged 15 years and above whose highest level of education completed is below S.4	52,671	87.7
Males aged 15 years and above whose highest level of education completed is below S.4	25,130	85.9
Females aged 15 years and above whose highest level of education completed is below S.4	27,541	89.4
<b>2.5: Persons not in School and Highest Level Completed is "O" Level</b>	<b>Number</b>	<b>Percent</b>
Persons aged 18 years and above whose highest level of education completed is "O" level (S.4)	4,212	5.6
Males aged 18 years and above whose highest level of education completed is "O" level (S.4)	2,250	6.5
Females aged 18 years and above whose highest level of education completed is "O" level (S.4)	1,962	4.9
<b>2.6: Persons not in School and Highest Level Completed is "A" Level</b>	<b>Number</b>	<b>Percent</b>
Persons aged 20 years and above whose highest level of education completed is "A" level (S.6)	721	1.1
Males aged 20 years and above whose highest level of education completed is "A" level (S.6)	545	1.8
Females aged 20 years and above whose highest level of education completed is "A" level (S.6)	176	0.5



**3: ILLITERACY STATUS**

<b>3.1: Persons aged 18 years and above</b>	<b>Number</b>	<b>Percent</b>
Persons aged 18 years and above who are illiterate	19,908	26.7
Males aged 18 years and above who are illiterate	7,219	20.9
Females aged 18 years and above who are illiterate	12,689	31.7
<b>3.2: Other age groups</b>	<b>Number</b>	<b>Percent</b>
Persons aged 10-17 years who are illiterate	6,440	18.2
Persons aged 18-30 years who are illiterate	4,997	13.8
Persons aged 60 years and above who are illiterate	5,037	61.2

**4: OWNERSHIP OF A BIRTH CERTIFICATE**

<b>4.1: Children with Birth Certificates</b>	<b>Number</b>	<b>Percent</b>
Children less than 1 year who have a Birth Certificate	976	16.6
Children less than 5 years who have a Birth Certificate	6,682	21.8
Children 0-8 years who have a Birth Certificate	12,364	22.9
Children 0-17 years who have a Birth Certificate	21,058	23.3

**5: PARENTAL SURVIVAL AND ORPHANHOOD**

<b>5.1: Children 0-8 years</b>	<b>Number</b>	<b>Percent</b>
Children 0-8 years who have lost one parent	2,004	3.7
Children 0-8 years who have lost both parents	175	0.3
Children 0-8 years who have lost at least a parent (total number of orphans)	2,179	4.0
Children 0-8 years who have both parents	51,747	96.0
<b>5.2: All children (0-17 years)</b>	<b>Number</b>	<b>Percent</b>
Children 0-17 years who have lost one parent	7,455	7.9
Children 0-17 years who have lost both parents	1,166	1.2
Children 0-17 years who have lost at least a parent (total number of orphans)	8,621	9.1
Children 0-17 years who have both parents	85,627	90.9

**6: DISABILITY**

<b>6.1: Persons with a disability</b>	<b>Number</b>	<b>Percent</b>
Persons aged 2 years and above with a disability	19,165	12.2
Persons aged 2 years and above with a seeing disability	10,743	6.8
Persons aged 2 years and above with a hearing disability	5,220	3.3
Persons aged 2 years and above with a walking disability	7,655	4.9
Persons aged 2 years and above with a remembering disability	9,588	6.1
Persons aged 2 years and above with multiple disabilities	6,905	38.5
Children aged 2-17 years with a disability	3,416	4.1
Youth aged 18-30 years with a disability	2,762	7.6
Older persons aged 60 years and above with a disability	5,608	68.1

**7: MARRIAGE AND CHILDBEARING**

<b>7.1: Marital status of the population</b>	<b>Number</b>	<b>Percent</b>
Persons aged 10 years and above who are married	25,688	44.7
Persons aged 18 years and above who are married	24,645	61.5
Females aged 50 years and above who are widowed	3,448	40.2
Females aged 10-17 years who have ever been married	1,231	7.1
Females aged 10-19 years who have ever been married	2,879	13.7
<b>7.2: Females who have had a birth</b>	<b>Number</b>	<b>Percent</b>
Females aged 12-17 years who have given birth	1,182	9.4
Females aged 12-19 years who have given birth	2,869	17.6

**8: WORKING STATUS**

<b>8.1: Working persons</b>	<b>Number</b>	<b>Percent</b>
Persons aged 10-15 years who were working	11,382	41.4
Persons aged 10-17 years who were working	16,174	45.8
Persons aged 18-30 years who were working	31,770	87.8
Persons aged 16-64 years who were working	68,266	89.0
Persons aged 18 years and above who were working	67,533	90.5
Persons aged 60 years and above who were working	6,347	77.1
<b>8.2: Youths Not working and not in school</b>		
Youths (Persons aged 18-30 years) who were neither working nor in school	1,447	4.0

**9: USE OF ICT**

<b>9.1: Mobile phone ownership (10 years and above)</b>	<b>Number</b>	<b>Percent</b>
Persons aged 10 years and above that own at least one mobile phone	41,985	38.2
Males aged 10 years and above that own at least one mobile phone	21,962	41.8
Females aged 10 years and above that own at least one mobile phone	20,023	34.9
<b>9.2: Mobile phone ownership (18-30 years)</b>	<b>Number</b>	<b>Percent</b>
Persons aged 18-30 years and above that own at least one mobile phone	18,809	52.0
Males aged 18-30 years and above that own at least one mobile phone	9,889	58.2
Females aged 18-30 years and above that own at least one mobile phone	8,920	46.5
<b>9.3: Internet Usage (10 years and above)</b>	<b>Number</b>	<b>Percent</b>
Persons aged 10 years and above that use internet	4,517	4.1
Males aged 10 years and above that use internet	2,925	5.6
Females aged 10 years and above that use internet	1,592	2.8
<b>9.4: Internet Usage (18-30 years)</b>	<b>Number</b>	<b>Percent</b>
Persons aged 18-30 years that use internet	2,780	7.7
Males aged 18-30 years that use internet	1,822	10.7
Females aged 18-30 years that use internet	958	5.0

**10: HOUSING CONDITIONS**

<b>10.1: Construction Materials For the Dwelling Units</b>	<b>Number</b>	<b>Percent</b>
Households living in dwelling units constructed using permanent roof materials	34,872	96.7
Households living in dwelling units constructed using permanent wall materials	5,390	14.9
Households living in dwelling units constructed using permanent floor materials	5,403	15.0
<b>10.2: Status of Dwelling Units</b>	<b>Number</b>	<b>Percent</b>
Households living in semi-permanent dwelling units	31,056	86.1
Households living in temporary dwelling units	1,161	3.2

**11: ACCESS TO COMMUNITY SERVICES**

<b>11.1: Access to a Primary school</b>	<b>Number</b>	<b>Percent</b>
Households that are 5 km or more to the nearest primary school, <u>whether public or private</u>	2,624	7.3
Households that are 5 km or more to the nearest <u>public</u> primary school	3,872	10.7
<b>11.2: Access to a Secondary school</b>	<b>Number</b>	<b>Percent</b>
Households that are 5 km or more to the nearest secondary school, <u>whether public or private</u>	11,481	31.8
Households that are 5 km or more to the nearest <u>public</u> secondary school	16,532	45.8
<b>11.3: Access to a Health Facility</b>	<b>Number</b>	<b>Percent</b>
Households that are 5 km or more to the nearest health facility, <u>whether public or private</u>	6,082	16.9
Households that are 5 km or more to the nearest <u>public</u> health facility	8,433	23.4
<b>11.4: Access to a Police post /Police station</b>	<b>Number</b>	<b>Percent</b>
Households that are 5 km or more to the nearest Police Post/Police Station	13,536	37.5

**12: HOUSEHOLD HEALTH AND HYGIENE**

<b>12.1:Ownership of Mosquito nets</b>	<b>Number</b>	<b>Percent</b>
Households that own at least a mosquito net	34,361	95.3
Households that own at least a mosquito net that was received free (Government /NGO)	33,918	98.7
<b>12.2: Source Of Water For Drinking</b>	<b>Number</b>	<b>Percent</b>
Households that have access to piped water	8,229	22.8
Households that use a bore hole	7,345	20.4
<b>12.3:Ownership of a Toilet facility</b>	<b>Number</b>	<b>Percent</b>
Households without any toilet facility	816	2.3
<b>12.4: Other environmental conditions</b>	<b>Number</b>	<b>Percent</b>
Households that <u>properly</u> dispose off solid waste	11,341	31.4
Households which are not living in decent dwellings	35,646	98.8

**13: HOUSEHOLD ASSETS**

<b>13.1: Owner occupied Dwellings</b>	<b>Number</b>	<b>Percent</b>
Households that are owner occupied	29,226	81.03
Male headed households that are owner occupied	21,823	81.55
Female headed households that are owner occupied	7,403	79.54
<b>13.2: Movable Assets</b>	<b>Number</b>	<b>Percent</b>
Households that own a television	1,738	4.8
Households that own a computer	359	1.0
Households that own a bicycle	10,294	28.5
Households that own a radio	26,358	73.1

**14: OTHER HOUSEHOLD CHARACTERISTICS**

<b>14.1: Main source of information</b>	<b>Number</b>	<b>Percent</b>
Households whose main source of information is a radio	26,138	72.5
Households whose main source of information is a community announcer	576	1.6
Households whose main source of information is a telephone	1,245	3.5
<b>14.2: Household Economy and Welfare</b>	<b>Number</b>	<b>Percent</b>
Households that received remittances from abroad in the last 12 months	2,989	8.3
Households where any member possesses a bank account	6,253	17.3
Households that depend on subsistence farming as a main source of livelihood	28,344	78.6
Households with at least one member engaged in a non-agricultural household based enterprise	13,530	82.3
Households where (members aged 5 years and above) consume less than two meals in a day	2,127	5.9
<b>14.3: Source of Energy for lighting</b>	<b>Number</b>	<b>Percent</b>
Households that have access to electricity	3,760	10.4
Households that use Tadooba for lighting	27,744	76.9

**15: HOUSEHOLD BASED AGRICULTURAL ACTIVITIES**

<b>15.1:Household based Agricultural activities</b>	<b>Number</b>	<b>Percent</b>
Households engaged in crop growing	32,940	91.33
Households engaged in maize growing	20,134	55.82
Households engaged in coffee growing	4,396	12.19
Households engaged in growing of beans	27,456	76.12
Households engaged in growing of millet	2,164	6.00
Households engaged in growing of sweet potatoes	9,598	26.61
Households engaged in growing of matooke	19,427	53.86
Households engaged livestock farming	24,838	68.86
Households engaged in either crop growing or livestock farming	33,648	93.29

## BURAHYA COUNTY CONSTITUENCY

### LIST OF TABLES

1	Population
2	Education
3	Illiteracy status
4	Ownership of a Birth Certificate
5	Parental Survival and Orphanhood
6	Disability
7	Marriage and Child Bearing
8	Working Status
9	Use of ICT
10	Housing Conditions
11	Access to Community Services
12	Household Health and Hygiene
13	Household Assets
14	Other Household Characteristics
15	Household Based Agricultural Activities

**1: POPULATION**

<b>1.1: Population Size</b>	<b>Number</b>	<b>Percent</b>
Total population	245,203	
Total male population	123,186	50.2
Total female population	122,017	49.8
Sex ratio (males per 100 females)	101.0	
<b>1.2: Households</b>	<b>Number</b>	<b>Percent</b>
Total households	56,361	
Households headed by males	41,836	74.2
Households headed by females	14,525	25.8
Households headed by children (aged 10-17 years)	354	0.6
Households headed by youth (aged 18-30 years)	16,865	29.9
Households headed by older persons (aged 60 years and above)	9,666	17.2
<b>1.3: Population by Age groups</b>	<b>Number</b>	<b>Percent</b>
Population aged 0-17 years	128,847	52.7
Population aged 18-30 years	56,755	23.2
Population aged 31-59 years	46,265	18.9
Population aged 60 years and over	12,414	5.1
<b>1.4: Population by Special Age groups</b>	<b>Number</b>	<b>Percent</b>
Population aged Less than one Year	7,918	3.2
Population aged 0-4 Years	41,614	17.0
Population aged 0-8 Years	72,640	29.7
Population aged 2-8 Years	56,988	23.3
Population aged 2-17 Years	113,195	46.3
Population aged 6-12 Years	49,774	20.4
Population aged 6-15 Years	68,079	27.9
Population aged 10-15 Years	38,181	15.6
Population aged 10-17 Years	49,456	20.2
Population aged 15-24 Years	50,639	20.7
Population aged 16-64 Years	118,012	48.3
Population aged 15-29 Years	68,728	28.1
Population aged 2 Years and Over	228,629	93.6
Population aged 10 Years and Over	164,890	67.5
Population aged 15 Years and Over	132,000	54.0
Population aged 18 Years and Over	115,434	47.3
Population aged 20 Years and Over	104,454	42.8
Population aged 65 Years and over	8,697	3.6



**2: EDUCATION**

<b>2.1: Non School attendance of</b>	<b>Number</b>	<b>Percent</b>
Persons aged 6-15 years not attending school	8,924	13.1
Males aged 6-15 years not attending school	5,073	14.6
Females aged 6-15 years not attending school	3,851	11.5
<b>2.2: Persons attending Primary school</b>	<b>Number</b>	<b>Percent</b>
Persons aged 6-12 years attending primary school	40,135	80.6
Males aged 6-12 years attending primary school	20,145	79.3
Females aged 6-12 years attending primary school	19,990	82.1
<b>2.3: Persons attending Secondary school</b>	<b>Number</b>	<b>Percent</b>
Persons aged 13-18 years attending secondary school	10,391	29.1
Males aged 13-18 years attending secondary school	4,956	27.4
Females aged 13-18 years attending secondary school	5,435	30.8
<b>2.4: Persons not in School and Highest Level Completed is below S.4</b>	<b>Number</b>	<b>Percent</b>
Persons aged 15 years and above whose highest level of education completed is below S.4	78,673	85.4
Males aged 15 years and above whose highest level of education completed is below S.4	39,865	84.2
Females aged 15 years and above whose highest level of education completed is below S.4	38,808	86.8
<b>2.5: Persons not in School and Highest Level Completed is "O" Level</b>	<b>Number</b>	<b>Percent</b>
Persons aged 18 years and above whose highest level of education completed is "O" level (S.4)	7,262	6.3
Males aged 18 years and above whose highest level of education completed is "O" level (S.4)	3,871	6.8
Females aged 18 years and above whose highest level of education completed is "O" level (S.4)	3,391	5.8
<b>2.6: Persons not in School and Highest Level Completed is "A" Level</b>	<b>Number</b>	<b>Percent</b>
Persons aged 20 years and above whose highest level of education completed is "A" level (S.6)	1,431	1.4
Males aged 20 years and above whose highest level of education completed is "A" level (S.6)	1,012	2.0
Females aged 20 years and above whose highest level of education completed is "A" level (S.6)	419	0.8

**3: ILLITERACY STATUS**

<b>3.1: Persons aged 18 years and above</b>	<b>Number</b>	<b>Percent</b>
Persons aged 18 years and above who are illiterate	31,149	27.0
Males aged 18 years and above who are illiterate	12,541	22.2
Females aged 18 years and above who are illiterate	18,608	31.6
<b>3.2: Other age groups</b>	<b>Number</b>	<b>Percent</b>
Persons aged 10-17 years who are illiterate	9,335	18.9
Persons aged 18-30 years who are illiterate	9,021	15.9
Persons aged 60 years and above who are illiterate	7,101	57.2

**4: OWNERSHIP OF A BIRTH CERTIFICATE**

<b>4.1: Children with Birth Certificates</b>	<b>Number</b>	<b>Percent</b>
Children less than 1 year who have a Birth Certificate	2,192	27.7
Children less than 5 years who have a Birth Certificate	14,289	34.3
Children 0-8 years who have a Birth Certificate	26,248	36.1
Children 0-17 years who have a Birth Certificate	45,128	36.6

**5: PARENTAL SURVIVAL AND ORPHANHOOD**

<b>5.1: Children 0-8 years</b>	<b>Number</b>	<b>Percent</b>
Children 0-8 years who have lost one parent	3,039	4.2
Children 0-8 years who have lost both parents	322	0.4
Children 0-8 years who have lost at least a parent (total number of orphans)	3,361	4.6
Children 0-8 years who have both parents	69,279	95.4
<b>5.2: All children (0-17 years)</b>	<b>Number</b>	<b>Percent</b>
Children 0-17 years who have lost one parent	11,268	8.7
Children 0-17 years who have lost both parents	2,046	1.6
Children 0-17 years who have lost at least a parent (total number of orphans)	13,314	10.3
Children 0-17 years who have both parents	115,533	89.7

**6: DISABILITY**

<b>6.1: Persons with a disability</b>	<b>Number</b>	<b>Percent</b>
Persons aged 2 years and above with a disability	29,534	12.9
Persons aged 2 years and above with a seeing disability	16,535	7.2
Persons aged 2 years and above with a hearing disability	7,881	3.4
Persons aged 2 years and above with a walking disability	10,873	4.8
Persons aged 2 years and above with a remembering disability	15,220	6.7
Persons aged 2 years and above with multiple disabilities	10,355	37.3
Children aged 2-17 years with a disability	5,216	4.6
Youth aged 18-30 years with a disability	4,329	7.6
Older persons aged 60 years and above with a disability	8,609	69.3

**7: MARRIAGE AND CHILDBEARING**

<b>7.1: Marital status of the population</b>	<b>Number</b>	<b>Percent</b>
Persons aged 10 years and above who are married	35,837	43.1
Persons aged 18 years and above who are married	34,330	58.3
Females aged 50 years and above who are widowed	5,234	42.0
Females aged 10-17 years who have ever been married	1,736	7.1
Females aged 10-19 years who have ever been married	4,105	13.8
<b>7.2: Females who have had a birth</b>	<b>Number</b>	<b>Percent</b>
Females aged 12-17 years who have given birth	1,719	9.6
Females aged 12-19 years who have given birth	4,177	18.0

**8: WORKING STATUS**

<b>8.1: Working persons</b>	<b>Number</b>	<b>Percent</b>
Persons aged 10-15 years who were working	13,119	34.4
Persons aged 10-17 years who were working	19,003	38.4
Persons aged 18-30 years who were working	47,275	83.3
Persons aged 16-64 years who were working	100,121	84.8
Persons aged 18 years and above who were working	99,518	86.2
Persons aged 60 years and above who were working	8,506	68.5
<b>8.2: Youths Not working and not in school</b>		
Youths (Persons aged 18-30 years) who were neither working nor in school	3,446	6.1

**9: USE OF ICT**

<b>9.1: Mobile phone ownership (10 years and above)</b>	<b>Number</b>	<b>Percent</b>
Persons aged 10 years and above that own at least one mobile phone	67,642	41.0
Males aged 10 years and above that own at least one mobile phone	37,101	45.4
Females aged 10 years and above that own at least one mobile phone	30,541	36.7
<b>9.2: Mobile phone ownership (18-30 years)</b>	<b>Number</b>	<b>Percent</b>
Persons aged 18-30 years and above that own at least one mobile phone	31,642	55.8
Males aged 18-30 years and above that own at least one mobile phone	17,430	61.8
Females aged 18-30 years and above that own at least one mobile phone	14,212	49.8
<b>9.3: Internet Usage (10 years and above)</b>	<b>Number</b>	<b>Percent</b>
Persons aged 10 years and above that use internet	9,609	5.8
Males aged 10 years and above that use internet	6,086	7.5
Females aged 10 years and above that use internet	3,523	4.2
<b>9.4: Internet Usage (18-30 years)</b>	<b>Number</b>	<b>Percent</b>
Persons aged 18-30 years that use internet	5,676	10.0
Males aged 18-30 years that use internet	3,623	12.8
Females aged 18-30 years that use internet	2,053	7.19

**10: HOUSING CONDITIONS**

<b>10.1: Construction Materials For the Dwelling Units</b>	<b>Number</b>	<b>Percent</b>
Households living in dwelling units constructed using permanent roof materials	54,497	96.7
Households living in dwelling units constructed using permanent wall materials	13,939	24.7
Households living in dwelling units constructed using permanent floor materials	12,860	22.8
<b>10.2: Status of Dwelling Units</b>	<b>Number</b>	<b>Percent</b>
Households living in semi-permanent dwelling units	44,737	79.4
Households living in temporary dwelling units	1,816	3.2

**11: ACCESS TO COMMUNITY SERVICES**

<b>11.1: Access to a Primary school</b>	<b>Number</b>	<b>Percent</b>
Households that are 5 km or more to the nearest primary school, <u>whether public or private</u>	5,600	9.9
Households that are 5 km or more to the nearest <u>public</u> primary school	8,390	14.9
<b>11.2: Access to a Secondary school</b>	<b>Number</b>	<b>Percent</b>
Households that are 5 km or more to the nearest secondary school, <u>whether public or private</u>	19,682	34.9
Households that are 5 km or more to the nearest <u>public</u> secondary school	32,644	57.9
<b>11.3: Access to a Health Facility</b>	<b>Number</b>	<b>Percent</b>
Households that are 5 km or more to the nearest health facility, <u>whether public or private</u>	10,339	18.3
Households that are 5 km or more to the nearest <u>public</u> health facility	17,967	31.9
<b>11.4: Access to a Police post /Police station</b>	<b>Number</b>	<b>Percent</b>
Households that are 5 km or more to the nearest Police Post/Police Station	20,948	37.2

**12: HOUSEHOLD HEALTH AND HYGIENE**

<b>12.1:Ownership of Mosquito nets</b>	<b>Number</b>	<b>Percent</b>
Households that own at least a mosquito net	53,126	94.3
Households that own at least a mosquito net that was received free (Government /NGO)	52,214	98.3
<b>12.2: Source Of Water For Drinking</b>	<b>Number</b>	<b>Percent</b>
Households that have access to piped water	5,429	9.6
Households that use a bore hole	16,005	28.4
<b>12.3:Ownership of a Toilet facility</b>	<b>Number</b>	<b>Percent</b>
Households without any toilet facility	1,463	2.6
<b>12.4: Other environmental conditions</b>	<b>Number</b>	<b>Percent</b>
Households that <u>properly</u> dispose off solid waste	16,850	29.9
Households which are not living in decent dwellings	54,873	97.4

**13: HOUSEHOLD ASSETS**

<b>13.1: Owner occupied Dwellings</b>	<b>Number</b>	<b>Percent</b>
Households that are owner occupied	43,079	76.43
Male headed households that are owner occupied	32,163	76.88
Female headed households that are owner occupied	10,916	75.15
<b>13.2: Movable Assets</b>	<b>Number</b>	<b>Percent</b>
Households that own a television	3,773	6.7
Households that own a computer	914	1.6
Households that own a bicycle	18,205	32.3
Households that own a radio	42,213	74.9

**14: OTHER HOUSEHOLD CHARACTERISTICS**

<b>14.1: Main source of information</b>	<b>Number</b>	<b>Percent</b>
Households whose main source of information is a radio	42,526	75.5
Households whose main source of information is a community announcer	1,224	2.2
Households whose main source of information is a telephone	1,992	3.5
<b>14.2: Household Economy and Welfare</b>	<b>Number</b>	<b>Percent</b>
Households that received remittances from abroad in the last 12 months	5,660	10.0
Households where any member possesses a bank account	12,957	23.0
Households that depend on subsistence farming as a main source of livelihood	35,707	63.4
Households with at least one member engaged in a non-agricultural household based enterprise	29,696	87.0
Households where (members aged 5 years and above) consume less than two meals in a day	4,556	8.1
<b>14.3: Source of Energy for lighting</b>	<b>Number</b>	<b>Percent</b>
Households that have access to electricity	7,556	13.4
Households that use Tadooba for lighting	37,012	65.7

**15: HOUSEHOLD BASED AGRICULTURAL ACTIVITIES**

<b>15.1: Household based Agricultural activities</b>	<b>Number</b>	<b>Percent</b>
Households engaged in crop growing	47,572	84.4
Households engaged in maize growing	19,959	35.4
Households engaged in coffee growing	2,914	5.2
Households engaged in growing of beans	37,824	67.1
Households engaged in growing of millet	2,789	4.9
Households engaged in growing of sweet potatoes	20,340	36.1
Households engaged in growing of matooke	30,295	53.8
Households engaged livestock farming	35,006	62.1
Households engaged in either crop growing or livestock farming	49,052	87.0

## **APPENDICES**



## Appendix 1: Population by Sex and Type of Residence by District, Uganda 2014

Central	Male	Female	Urban	Rural	Total
Buikwe	207,324	215,447	299,628	123,143	422,771
Bukomansimbi	75,109	76,304	12,797	138,616	151,413
Butambala	50,082	50,758	15,553	85,287	100,840
Buvuma	48,414	41,476	9,935	79,955	89,890
Gomba	82,167	77,755	12,439	147,483	159,922
Kalangala	31,349	22,944	4,980	49,313	54,293
Kalungu	89,679	93,553	37,094	146,138	183,232
Kampala	712,762	794,318	1,507,080	0	1,507,080
Kayunga	180,706	187,356	27,061	341,001	368,062
Kiboga	75,847	72,371	33,520	114,698	148,218
Kyankwanzi	111,539	103,154	30,621	184,072	214,693
Luwero	226,805	230,153	95,749	361,209	456,958
Lwengo	133,474	141,479	42,919	232,034	274,953
Lyantonde	46,714	47,039	13,823	79,930	93,753
Masaka	145,552	151,452	103,227	193,777	297,004
Mityana	165,717	163,247	107,645	221,319	328,964
Mpigi	125,404	125,144	43,360	207,188	250,548
Mubende	346,654	337,694	113,803	570,545	684,348
Mukono	289,757	307,047	162,710	434,094	596,804
Nakaseke	104,795	92,578	39,397	157,976	197,373
Nakasongola	93,323	88,472	24,667	157,128	181,795
Rakai	254,366	261,943	34,041	482,268	516,309
Ssembabule	126,084	126,513	16,949	235,648	252,597
Wakiso	949,035	1,048,383	1,681,449	315,969	1,997,418
<b>Total</b>	<b>4,672,658</b>	<b>4,856,580</b>	<b>4,470,447</b>	<b>5,058,791</b>	<b>9,529,238</b>



Eastern	Male	Female	Urban	Rural	Total
Amuria	132,521	138,407	17,385	253,543	270,928
Budaka	100,620	106,977	23,809	183,788	207,597
Bududa	105,820	104,353	13,753	196,420	210,173
Bugiri	185,925	196,988	64,223	318,690	382,913
Bukedea	98,684	104,916	10,927	192,673	203,600
Bukwo	45,058	44,298	12,094	77,262	89,356
Bulambuli	86,108	88,405	16,867	157,646	174,513
Busia	156,447	167,215	54,798	268,864	323,662
Butaleja	119,466	124,687	33,201	210,952	244,153
Buyende	158,615	164,452	23,201	299,866	323,067
Iganga	241,182	263,015	92,792	411,405	504,197
Jinja	230,189	241,053	172,714	298,528	471,242
Kaberamaido	106,042	108,984	4,032	210,994	215,026
Kaliro	115,969	120,230	16,753	219,446	236,199
Kamuli	236,389	249,930	58,984	427,335	486,319
Kapchorwa	51,658	53,528	44,211	60,975	105,186
Katakwi	81,673	84,558	9,280	156,951	166,231
Kibuku	97,476	104,557	17,436	184,597	202,033

Kumi	116,457	122,811	36,493	202,775	239,268
Kween	47,404	46,263	6,462	87,205	93,667
Luuka	113,566	124,454	10,264	227,756	238,020
Manafwa	173,580	180,245	53,837	299,988	353,825
Mayuge	229,252	243,987	33,756	439,483	473,239
Mbale	233,339	255,621	126,544	362,416	488,960
Namayingo	106,303	109,140	15,740	199,703	215,443
Namutumba	123,911	128,646	18,679	233,878	252,557
Ngora	68,414	73,505	15,148	126,771	141,919
Pallisa	188,125	198,765	37,937	348,953	386,890
Serere	139,493	146,410	12,158	273,745	285,903
Sironko	120,862	121,559	34,104	208,317	242,421
Soroti	144,976	151,857	49,685	247,148	296,833
Tororo	250,830	266,250	72,325	444,755	517,080
<b>Total</b>	<b>4,406,354</b>	<b>4,636,066</b>	<b>1,209,592</b>	<b>7,832,828</b>	<b>9,042,420</b>

<b>Northern</b>	<b>Male</b>	<b>Female</b>	<b>Urban</b>	<b>Rural</b>	<b>Total</b>
Abim	52,456	55,510	17,168	90,798	107,966
Adjumani	108,298	116,953	41,064	184,187	225,251
Agago	110,495	117,297	29,153	198,639	227,792
Alebtong	110,989	116,552	6,702	220,839	227,541
Amolatar	73,014	74,152	21,479	125,687	147,166
Amudat	54,246	51,523	11,786	93,983	105,769
Amuru	91,284	95,412	9,302	177,394	186,696
Apac	180,995	187,631	75,300	293,326	368,626
Arua	374,755	407,322	61,962	720,115	782,077
Dokolo	89,476	93,617	20,135	162,958	183,093
Gulu	134,571	141,042	150,306	125,307	275,613
Kaabong	79,207	88,672	11,559	156,320	167,879
Kitgum	99,258	104,790	75,581	128,467	204,048
Koboko	102,250	104,245	57,902	148,593	206,495
Kole	117,164	122,163	8,860	230,467	239,327
Kotido	86,169	94,881	66,454	114,596	181,050
Lamwo	65,106	69,265	21,700	112,671	134,371
Lira	196,663	211,380	101,155	306,888	408,043
Maracha	87,900	98,234	9,291	176,843	186,134
Moroto	49,746	53,686	14,196	89,236	103,432
Moyo	68,940	70,072	10,579	128,433	139,012
Nakapiripirit	74,578	82,112	3,727	152,963	156,690
Napak	65,518	76,706	4,733	137,491	142,224
Nebbi	191,104	205,690	58,069	338,725	396,794
Nwoya	65,969	67,537	13,592	119,914	133,506
Omoro	78,837	81,895	18,952	141,780	160,732
Otuke	51,187	53,067	6,213	98,041	104,254
Oyam	187,121	196,523	18,399	365,245	383,644
Pader	86,635	91,369	13,382	164,622	178,004
Yumbe	230,626	254,196	34,806	450,016	484,822
Zombo	115,824	124,257	43,723	196,358	240,081

<b>Total</b>	<b>3,480,381</b>	<b>3,707,751</b>	<b>1,037,230</b>	<b>6,150,902</b>	<b>7,188,132</b>
<b>Western</b>	<b>Male</b>	<b>Female</b>	<b>Urban</b>	<b>Rural</b>	<b>Total</b>
Buhweju	59,059	61,661	2,956	117,764	120,720
Buliisa	57,801	55,360	7,238	105,923	113,161
Bundibugyo	108,435	115,952	40,219	184,168	224,387
Bushenyi	114,207	120,236	56,070	178,373	234,443
Hoima	287,906	285,080	105,944	467,042	572,986
Ibanda	121,440	128,185	136,860	112,765	249,625
Isingiro	235,621	250,739	58,408	427,952	486,360
Kabale	158,238	173,097	78,585	252,750	331,335
Kabarole	233,648	235,588	158,231	311,005	469,236
Kagadi	171,812	179,221	45,286	305,747	351,033
Kakumiro	147,157	145,951	9,834	283,274	293,108
Kamwenge	202,503	211,951	22,840	391,614	414,454
Kanungu	121,081	131,063	51,008	201,136	252,144
Kasese	338,215	356,772	140,050	554,937	694,987
Kibaale	70,815	70,132	6,650	134,297	140,947
Kiruhura	166,214	161,863	31,874	296,203	328,077
Kiryandongo	132,822	133,375	55,770	210,427	266,197
Kisoro	126,055	155,650	27,611	254,094	281,705
Kyegegwa	140,617	141,020	26,294	255,343	281,637
Kyenjojo	210,599	211,605	64,812	357,392	422,204
Masindi	148,121	142,992	94,438	196,675	291,113
Mbarara	230,082	242,547	195,318	277,311	472,629
Mitooma	86,484	96,960	11,396	172,048	183,444
Ntoroko	34,038	32,967	23,789	43,216	67,005
Ntungamo	232,469	251,372	71,485	412,356	483,841
Rubanda	92,011	104,885	26,669	170,227	196,896
Rubirizi	61,765	67,384	17,274	111,875	129,149
Rukungiri	150,016	164,678	43,576	271,118	314,694
Sheema	99,225	108,118	110,256	97,087	207,343
<b>Total</b>	<b>4,338,456</b>	<b>4,536,404</b>	<b>1,720,741</b>	<b>7,154,119</b>	<b>8,874,860</b>

## Appendix 2: The Household Questionnaire and code list for the National Population and Housing Census 2014

	<b>Republic of Uganda</b> <b>National Population and Housing Census 2014</b> <b>HOUSEHOLD QUESTIONNAIRE</b>	
<b>BOOK NUMBER</b>		
IDENTIFICATION PARTICULARS		
WRITE NAME IN CAPITAL LETTERS		CODE
DISTRICT:	<input type="text"/>	<input type="text"/>
COUNTY/MUNICIPALITY:	<input type="text"/>	<input type="text"/>
SUB COUNTY/DIVISION/TOWN COUNCIL:	<input type="text"/>	<input type="text"/>
PARISH/WARD:	<input type="text"/>	<input type="text"/>
LC1:	<input type="text"/>	<input type="text"/>
EA:	<input type="text"/>	<input type="text"/>
ENUMERATOR'S NAME AND CODE:		Code <input type="text"/>
ENUMERATOR'S SIGNATURE:	<input type="text"/>	
DATE: (dd/mm/yyyy):	<input type="text"/> / <input type="text"/> / <input type="text"/>	
PARISH SUPERVISOR'S NAME AND CODE:	<input type="text"/>	<input type="text"/>
PARISH SUPERVISOR'S SIGNATURE:	<input type="text"/>	
DATE: (dd/mm/yyyy):	<input type="text"/> / <input type="text"/> / <input type="text"/>	
<b>A</b>		
UGANDA BUREAU OF STATISTICS, P.O. Box 7186, Kampala, UGANDA. Tel: +256-414-706000. Fax: +256-414-237553. Email: <a href="mailto:ubos@ubos.org">ubos@ubos.org</a> Website: <a href="http://www.ubos.org">www.ubos.org</a>		

**Hello, my name is .....**  
**and I work with Uganda Bureau of Statistics (UBOS). We are conducting the National Population and Housing Census 2014. We are visiting each and every household in the country collecting information about individuals and the homesteads they live in. It takes about 40 minutes to complete the interview. Whatever information you provide will be kept strictly confidential. We would very much appreciate your participation and co-operation in this Census.**

Result Code (R1)	Ethnicity (P8)	Country Of Citizenship For Non-Ugandans	Religion (P9)	Section 5: Crop Codes
1 Completed	511 Acholi	555 Kakwa	10 No Religion	10 Maize
2 Partially Completed	512 Aliba	556 Karimojong	11 Anglican	11 Beans
3 Not Interviewed	513 Alur	557 Kebu (Okebu)	12 Catholic	12 Banana (Food)
	514 Aringa	558 Kuku	13 Muslim	13 Cassava
	515 Baamba	559 Kumam	14 Seventh-Day Adventist	14 Sweet Potatoes
	516 Babukusu	560 Lango	15 Orthodox	15 G/nuts
	517 Babwisi	561 Lendu	16 Pentecostal/ Born Again/ Evangelical	16 Sorghum
	518 Bafumbira	562 Lugbara	17 Baha'i	17 Millets
	519 Baganda	563 Madi	18 Baptist	18 Sim Sim
	520 Bagisu	564 Mening	19 Jews	19 Banana (Beer)
	521 Bagungu	565 Mvuba	20 Presbyterian	20 Irish Potatoes
	522 Bagwe	566 Napore	21 Mammon	21 Soya Beans
	523 Bagwere	567 Ngikutio	22 Hindus	22 Rice
	524 Bahehe	568 Nubi	23 Buddhist	23 Banana (sweet)
	525 Bahororo	569 Nyangia	24 Jehovah's Witness	24 Field Peas
	526 Bakenyi	570 Pokot	25 Salvation Army	27 (Kawo)
	527 Bakiga	571 Relli	26 Traditional	25 Cow Peas
	528 Bakonzo	572 Sabinu	27 Others	26 Pigeon Peas
	529 Banyabindi	573 Shana		27 Sugar cane
	530 Banyabutumbi	574 So (Tepeth)		28 Yam
	531 Banyankore	575 Vonoma		29 Avocado
	532 Banyara	576 Other Ugandan		30 Tomatoes
				31 Sunflower
				32 Cotton
				33 Jackfruit
				34 Pineapples
				35 Pumpkins
				36 Mango
				37 Oranges
				38 Cabbage
				39 Cocoa
				40 Paw Paw
				41 Eggplants
				42 Onions
				43 Passion fruit
				44 Greens (Doodo/ Nakati/ Bbugga/ Malakwang, etc)
				45 Vanilla
				46 Tea
				47 Wheat
				48 Barley
				49 Spinach
				50 Cucumber
				51 Water melons
				52 Carrots
				53 Garlic
				54 Mushroom
				55 Tobacco
				56 Grapes
				57 Lemons & Limes
				58 Tangarines & Mandarines
				59 Straw berries
				60 Apples & Apricots
				61 Pears
				62 Coffee Arabica
				63 Coffee Robusta
				96 Other crops
				97 N/A

Relationship (P2)	Major Field of Specialization (P20)	Type of Disability (P14-P17)	School Attendance P18	Activity Status (P22)	Marital Status (P26)
10 Usual head of hh - Absent	10 Health Sciences	1 No - no difficulty	1 Attending school in 2014	10 Working for pay	1 Never married
11 Usual head of hh - Present	11 Life & Biological Sciences	2 Yes - some difficulty	2 Left school in 2014	11 Employer	2 Currently married/Cohabiting (Monogamous)
12 Spouse	12 Animal Sciences	3 Yes - a lot of difficulty	3 Left school before 2014	12 Own account worker	3 Currently married/Cohabiting (Polygamous)
13 Biological Son	13 Physical/Natural Sciences	4 Cannot do at all	4 Never been to school	13 Helping without pay in hh business	4 Widowed
14 Biological Daughter	14 Sport Sciences	7 Not Applicable	7 NA	14 Volunteer	5 Separated
15 Step son	15 Engineering	8 Don't know		15 An apprentice (not paid)	6 Divorced
16 Step daughter	16 Social Sciences & History			16 Looking for work	7 NA
17 Grandson	17 Agriculture			17 Not working and not looking for work	8 Don't Know
18 Grand daughter	18 Computer & Information Sciences			18 Household chores	
19 Parent to head or spouse	19 Arts			19 Full time student	
20 Brother or Sister to head or spouse	20 Food science			20 Retired/pensioner	
21 Other relative	21 Business Studies			21 Too old to work	
22 Non relative	22 Mathematics			22 To young to work	
	23 Economics			96 Other	
	24 Demography and Population			97 NA	
	25 Community and Development Studies				
	26 Languages & Literature				
	27 Education				
	28 Gender Studies				
	29 Psychology				
	30 Sociology				
	31 Special Needs Education				
	32 Peace and conflict studies				
	33 Law & Legal Studies				
	34 Visual & Performing Arts				
	35 Commerce				
	36 Procurement and Supply Mgt				
	37 Administration and Human Resource				
	38 Communication and Journalism				
	39 Philosophy & Religion				
	40 Architecture & Physical Planning				
	41 Home Economics				
	42 Library and Archives Sciences				
	43 Tourism and hospitality				
	44 Statistics				
	45 Ethic Studies				
	96 Other specify				
	97 NA				

Grade Completed (P19)	Occupation (P23)
01 Never been to school	44 Market-oriented crop and animal producers
02 Did not complete Pre-Primary	45 Experienced non-professionals in teaching
03 Completed Pre-Primary	46 Market oriented fishery workers, hunters, and trappers
04 In P1 but did not complete / attend Pre-Primary	47 Transport laborers
10 Did not complete P1	48 Foremen, supervisors in elementary occupation services
11 P1	49 Travel attendants, guides, conductors,
12 P2	50 Market-oriented animal producers
13 P3	51 Cashier, teller, and related clerks, money lender, debt collectors
14 P4	52 Metal molders, welders, sheet metal workers, structural and metal prepares
15 P5	53 Numerical clerks (Statistical, finance, book keeping and accounting)
16 P6	54 Handicraft workers in wood, textiles, and related materials
17 P7	55 Secretaries and Keyboard operating clerks
21 J1-J3	56 Post-primary education teaching associate professionals
31 S1	57 retailers of human drugs
32 S2	58 Traditional medicine practitioners and faith healers
33 S3	59 Medical assistants
34 S4	60 Laborers in mining
35 S5	61 Pre-primary Education Teaching associate professionals
36 S6	62 Physical science and engineering technicians
41 Professional Certificate	63 Electrical and electronic Instrument mechanics and fitters
42 Diploma	64 Other street elementary occupation services e.g. shoe polisher, car washers
43 First Degree	65 Religion professionals (ordained catechist)
44 Post Graduate Certificate	66 Computer assistants and computer equipment operators
45 Post Graduate Diploma	67 Finance and sales associate professionals
46 Masters Degree	68 Accountants, business administrators, and business professionals
47 PhD	69 Public and private administrative associate professionals
96 Other	70 Client Information Clerks
97 NA	96 Others
	97 N/A

Occupation (P23)
44 Market-oriented crop and animal producers
45 Experienced non-professionals in teaching
46 Market oriented fishery workers, hunters, and trappers
47 Transport laborers
48 Foremen, supervisors in elementary occupation services
49 Travel attendants, guides, conductors,
50 Market-oriented animal producers
51 Cashier, teller, and related clerks, money lender, debt collectors
52 Metal molders, welders, sheet metal workers, structural and metal prepares
53 Numerical clerks (Statistical, finance, book keeping and accounting)
54 Handicraft workers in wood, textiles, and related materials
55 Secretaries and Keyboard operating clerks
56 Post-primary education teaching associate professionals
57 retailers of human drugs
58 Traditional medicine practitioners and faith healers
59 Medical assistants
60 Laborers in mining
61 Pre-primary Education Teaching associate professionals
62 Physical science and engineering technicians
63 Electrical and electronic Instrument mechanics and fitters
64 Other street elementary occupation services e.g. shoe polisher, car washers
65 Religion professionals (ordained catechist)
66 Computer assistants and computer equipment operators
67 Finance and sales associate professionals
68 Accountants, business administrators, and business professionals
69 Public and private administrative associate professionals
70 Client Information Clerks
96 Others
97 N/A

Occupation (P23)
44 Market-oriented crop and animal producers
45 Experienced non-professionals in teaching
46 Market oriented fishery workers, hunters, and trappers
47 Transport laborers
48 Foremen, supervisors in elementary occupation services
49 Travel attendants, guides, conductors,
50 Market-oriented animal producers
51 Cashier, teller, and related clerks, money lender, debt collectors
52 Metal molders, welders, sheet metal workers, structural and metal prepares
53 Numerical clerks (Statistical, finance, book keeping and accounting)
54 Handicraft workers in wood, textiles, and related materials
55 Secretaries and Keyboard operating clerks
56 Post-primary education teaching associate professionals
57 retailers of human drugs
58 Traditional medicine practitioners and faith healers
59 Medical assistants
60 Laborers in mining
61 Pre-primary Education Teaching associate professionals
62 Physical science and engineering technicians
63 Electrical and electronic Instrument mechanics and fitters
64 Other street elementary occupation services e.g. shoe polisher, car washers
65 Religion professionals (ordained catechist)
66 Computer assistants and computer equipment operators
67 Finance and sales associate professionals
68 Accountants, business administrators, and business professionals
69 Public and private administrative associate professionals
70 Client Information Clerks
96 Others
97 N/A

Occupation (P23)
44 Market-oriented crop and animal producers
45 Experienced non-professionals in teaching
46 Market oriented fishery workers, hunters, and trappers
47 Transport laborers
48 Foremen, supervisors in elementary occupation services
49 Travel attendants, guides, conductors,
50 Market-oriented animal producers
51 Cashier, teller, and related clerks, money lender, debt collectors
52 Metal molders, welders, sheet metal workers, structural and metal prepares
53 Numerical clerks (Statistical, finance, book keeping and accounting)
54 Handicraft workers in wood, textiles, and related materials
55 Secretaries and Keyboard operating clerks
56 Post-primary education teaching associate professionals
57 retailers of human drugs
58 Traditional medicine practitioners and faith healers
59 Medical assistants
60 Laborers in mining
61 Pre-primary Education Teaching associate professionals
62 Physical science and engineering technicians
63 Electrical and electronic Instrument mechanics and fitters
64 Other street elementary occupation services e.g. shoe polisher, car washers
65 Religion professionals (ordained catechist)
66 Computer assistants and computer equipment operators
67 Finance and sales associate professionals
68 Accountants, business administrators, and business professionals
69 Public and private administrative associate professionals
70 Client Information Clerks
96 Others
97 N/A

Occupation (P23)
44 Market-oriented crop and animal producers
45 Experienced non-professionals in teaching
46 Market oriented fishery workers, hunters, and trappers
47 Transport laborers
48 Foremen, supervisors in elementary occupation services
49 Travel attendants, guides, conductors,
50 Market-oriented animal producers
51 Cashier, teller, and related clerks, money lender, debt collectors
52 Metal molders, welders, sheet metal workers, structural and metal prepares
53 Numerical clerks (Statistical, finance, book keeping and accounting)
54 Handicraft workers in wood, textiles, and related materials
55 Secretaries and Keyboard operating clerks
56 Post-primary education teaching associate professionals
57 retailers of human drugs
58 Traditional medicine practitioners and faith healers
59 Medical assistants
60 Laborers in mining
61 Pre-primary Education Teaching associate professionals
62 Physical science and engineering technicians
63 Electrical and electronic Instrument mechanics and fitters
64 Other street elementary occupation services e.g. shoe polisher, car washers
65 Religion professionals (ordained catechist)
66 Computer assistants and computer equipment operators
67 Finance and sales associate professionals
68 Accountants, business administrators, and business professionals
69 Public and private administrative associate professionals
70 Client Information Clerks
96 Others
97 N/A

Occupation (P23)
44 Market-oriented crop and animal producers
45 Experienced non-professionals in teaching
46 Market oriented fishery workers, hunters, and trappers
47 Transport laborers
48 Foremen, supervisors in elementary occupation services
49 Travel attendants, guides, conductors,
50 Market-oriented animal producers
51 Cashier, teller, and related clerks, money lender, debt collectors
52 Metal molders, welders, sheet metal workers, structural and metal prepares
53 Numerical clerks (Statistical, finance, book keeping and accounting)
54 Handicraft workers in wood, textiles, and related materials
55 Secretaries and Keyboard operating clerks
56 Post-primary education teaching associate professionals
57 retailers of human drugs
58 Traditional medicine practitioners and faith healers
59 Medical assistants
60 Laborers in mining
61 Pre-primary Education Teaching associate professionals
62 Physical science and engineering technicians
63 Electrical and electronic Instrument mechanics and fitters
64 Other street elementary occupation services e.g. shoe polisher, car washers
65 Religion professionals (ordained catechist)
66 Computer assistants and computer equipment operators
67 Finance and sales associate professionals
68 Accountants, business administrators, and business professionals
69 Public and private administrative associate professionals
70 Client Information Clerks
96 Others
97 N/A

Occupation (P23)
44 Market-oriented crop and animal producers
45 Experienced non-professionals in teaching
46 Market oriented fishery workers, hunters, and trappers
47 Transport laborers
48 Foremen, supervisors in elementary occupation services
49 Travel attendants, guides, conductors,
50 Market-oriented animal producers
51 Cashier, teller, and related clerks, money lender, debt collectors
52 Metal molders, welders, sheet metal workers, structural and metal prepares
53 Numerical clerks (Statistical, finance, book keeping and accounting)
54 Handicraft workers in wood, textiles, and related materials
55 Secretaries and Keyboard operating clerks
56 Post-primary education teaching associate professionals
57 retailers of human drugs
58 Traditional medicine practitioners and faith healers
59 Medical assistants
60 Laborers in mining
61 Pre-primary Education Teaching associate professionals
62 Physical science and engineering technicians
63 Electrical and electronic Instrument mechanics and fitters
64 Other street elementary occupation services e.g. shoe polisher, car washers
65 Religion professionals (ordained catechist)
66 Computer assistants and computer equipment operators
67 Finance and sales associate professionals
68 Accountants, business administrators, and business professionals
69 Public and private administrative associate professionals
70 Client Information Clerks
96 Others
97 N/A

Occupation (P23)
44 Market-oriented crop and animal producers
45 Experienced non-professionals in teaching
46 Market oriented fishery workers, hunters, and trappers
47 Transport laborers
48 Foremen, supervisors in elementary occupation services
49 Travel attendants, guides, conductors,
50 Market-oriented animal producers
51 Cashier, teller, and related clerks, money lender, debt collectors
52 Metal molders, welders, sheet metal workers, structural and metal prepares
53 Numerical clerks (Statistical, finance, book keeping and accounting)
54 Handicraft workers in wood, textiles, and related materials
55 Secretaries and Keyboard operating clerks
56 Post-primary education teaching associate professionals
57 retailers of human drugs
58 Traditional medicine practitioners and faith healers
59 Medical assistants
60 Laborers in mining
61 Pre-primary Education Teaching associate professionals
62 Physical science and engineering technicians
63 Electrical and electronic Instrument mechanics and fitters
64 Other street elementary occupation services e.g. shoe polisher, car washers
65 Religion professionals (ordained catechist)
66 Computer assistants and computer equipment operators
67 Finance and sales associate professionals
68 Accountants, business administrators, and business professionals
69 Public and private administrative associate professionals
70 Client Information Clerks
96 Others
97 N/A

Occupation (P23)
44 Market-oriented crop and animal producers
45 Experienced non-professionals in teaching
46 Market oriented fishery workers, hunters, and trappers
47 Transport laborers
48 Foremen, supervisors in elementary occupation services
49 Travel attendants, guides, conductors,
50 Market-oriented animal producers
51 Cashier, teller, and related clerks, money lender, debt collectors
52 Metal molders, welders, sheet metal workers, structural and metal prepares
53 Numerical clerks (Statistical, finance, book keeping and accounting)
54 Handicraft workers in wood, textiles, and related materials
55 Secretaries and Keyboard operating clerks
56 Post-primary education teaching associate professionals
57 retailers of human drugs
58 Traditional medicine practitioners and faith healers
59 Medical assistants
60 Laborers in mining
61 Pre-primary Education Teaching associate professionals
62 Physical science and engineering technicians
63 Electrical and electronic Instrument mechanics and fitters
64 Other street elementary occupation services e.g. shoe polisher, car washers
65 Religion professionals (ordained catechist)
66 Computer assistants and computer equipment operators
67 Finance and sales associate professionals
68 Accountants, business administrators, and business professionals
69 Public and private administrative associate professionals
70 Client Information Clerks
96 Others
97 N/A

Occupation (P23)
44 Market-oriented crop and animal producers
45 Experienced non-professionals in teaching
46 Market oriented fishery workers, hunters, and trappers
47 Transport laborers
48 Foremen, supervisors in elementary occupation services
49 Travel attendants, guides, conductors,
50 Market-oriented animal producers
51 Cashier, teller, and related clerks, money lender, debt collectors
52 Metal molders, welders, sheet metal workers, structural and metal prepares
53 Numerical clerks (Statistical, finance, book keeping and accounting)
54 Handicraft workers in wood, textiles, and related materials
55 Secretaries and Keyboard operating clerks
56 Post-primary education teaching associate professionals
57 retailers of human drugs
58 Traditional medicine practitioners and faith healers
59 Medical assistants
60 Laborers in mining
61 Pre-primary Education Teaching associate professionals
62 Physical science and engineering technicians
63 Electrical and electronic Instrument mechanics and fitters
64 Other street elementary occupation services e.g. shoe polisher, car washers
65 Religion professionals (ordained catechist)
66 Computer assistants and computer equipment operators
67 Finance and sales associate professionals
68 Accountants, business administrators, and business professionals
69 Public and private administrative associate professionals
70 Client Information Clerks
96 Others
97 N/A


Occupation (P23)
44 Market-oriented crop and animal producers
45 Experienced non-professionals in teaching
46 Market oriented fishery workers, hunters, and trappers
47 Transport laborers
48 Foremen, supervisors in elementary occupation services
49 Travel attendants, guides, conductors,
50 Market-oriented animal producers
51 Cashier, teller, and related clerks, money lender, debt collectors
52 Metal molders, welders, sheet metal workers, structural and metal prepares
53 Numerical clerks (Statistical, finance, book keeping and accounting)
54 Handicraft workers in wood, textiles, and related materials

61

[illegible]

[illegible]



DD4						HOUSEHOLD NUMBER							
SECTION 2: HOUSING CONDITIONS						SECTION 3: COMMUNITY SERVICES				SECTION 4: HOUSEHOLD CHARACTERISTICS			
What is the occupancy <b>tenure</b> of the dwelling unit?	What type of dwelling unit does this household occupy?	How many rooms were used on the Census Night for sleeping?	Types of materials mainly used for construction of the roof	Types of materials mainly used for construction of the wall	Types of materials mainly used for the floor	What is the distance from home to the nearest ..... on foot, irrespective of whether you use the service or not <i>(Record distance in kms, if distance is given in miles, refer to code list H7-H13)</i>		What source of energy does this household mainly use for lighting?					
<b>H1</b>	<b>H2</b>	<b>H3</b>	<b>H4</b>	<b>H5</b>	<b>H6</b>	<b>H7</b>	<b>H8</b>	<b>H9</b>	<b>H10</b>	<b>H11</b>	<b>H12</b>	<b>H13</b>	<b>H14</b>
10 = Owner occupied 11 = Free Public 12 = Free Private 13 = Subsidized public 14 = Subsidized private 15 = Rented public 16 = Rented private 96 = Other	10 = Detached house (single or multi-storey) 11 = Semi-Detached house 12 = Flat in a Block of Flats 13 = Room or rooms of a Main House 14 = Servants Quarters 15 = Tenement (Muzigo) 16 = Garage 17 = Go down/Basement 18 = Store 96 = Other	If 9 or more were used, record 9	10 = Iron sheets 11 = Tiles 12 = Asbestos 13 = Concrete 14 = Tins 15 = Thatch 96 = Other	10 = Concrete/Stones 11 = Cement Blocks 12 = Burnt/Stabilised bricks 13 = Unburnt bricks with Cement 14 = Unburnt bricks with mud 15 = Wood 16 = Mud and Pole 17 = Tin/Iron sheets 96 = Other	10 = Earth 11 = Rammed earth 12 = Cement screed 13 = Concrete 14 = Tiles 15 = Brick 16 = Stone 17 = Wood 96 = Other	Public Health Facility	Private Health Facility	Public Primary School	Private Primary School	Public Secondary School	Private Secondary School	Police Station / Police Post	10 = Electricity- National grid (Umeme) 11 = Electricity- Solar 12 = Electricity- Personal Generator 13 = Electricity- Community/thermal plant 14 = Gas 15 = Liquefied Petroleum Gas (LPG) 16 = Biogas 17 = Paraffin-Lantern 18 = Paraffin-Tadooba 19 = Candles 20 = Firewood 21 = Cow Dung 22 = Grass (reeds) 96 = Other
SECTION 4: HOUSEHOLD CHARACTERISTICS (CONTINUED)													
What source of energy does this household mainly use for cooking?	What is the household's main source of water for drinking?	What is the distance to this source of water?	What type of toilet facility does this household mainly use?	Does the Household share this toilet facility with other households?	What is the most commonly used method of solid waste disposal from the household?	What type of bathroom does this household mainly use?	What type of kitchen does this household mainly use?						
<b>H15</b>	<b>H16</b>	<b>H17</b>	<b>H18</b>	<b>H19</b>	<b>H20</b>	<b>H21</b>	<b>H22</b>						
10 = Electricity- National grid (Umeme) 11 = Electricity- Solar 12 = Electricity- Personal Generator 13 = Electricity- Community/thermal plant 14 = Gas 15 = Liquefied Petroleum Gas (LPG) 16 = Biogas 17 = Paraffin-Stove 18 = Charcoal 19 = Firewood 20 = Cow Dung 21 = Grass (reeds) 96 = Other	10 = Piped water into dwelling 11 = Piped water to the yard 12 = Public Taps 13 = Borehole in yard/plot 14 = Public borehole 15 = Protected well/spring 16 = Unprotected well/spring 17 = River/Stream/Lake 18 = Vendor 19 = Tanker Truck 20 = Gravity Flow Scheme 21 = Rain Water 22 = Bottled Water 96 = Other	<i>(Record distance in kms, if distance is given in miles, see conversion list)</i> <i>If the water source is on premises, record 0.0</i>	10 = Flush Toilet 11 = VIP Latrine 12 = Covered Pit Latrine <u>with a slab</u> 13 = Covered Pit Latrine <u>without a slab</u> 14 = Uncovered Pit Latrine <u>with a slab</u> 15 = Uncovered Pit Latrine <u>without a slab</u> 16 = Ecosan (compost toilet) 17 = No facility, bush, polythene bags, bucket, etc 96 = Other	1 = Yes 2 = No 7 = N/A (For "No Facility, Bush, Polythene bags, bucket etc)	10 = Occupants dispose solid waste in the garden, and DO NOT burn or bury it. 11 = Occupants burn solid waste 12 = Occupants bury solid waste 13 = Occupants dispose solid waste in a local dump supervised by urban authorities 14 = Occupants dispose solid waste in a local dump NOT supervised by urban authorities 15 = Solid waste collected by waste vendor 16 = Occupants dispose solid waste into river/sea/stream/pond 96 = Other arrangements	10 = Inside, drainage provided 11 = Inside, no drainage provided 12 = Outside built, drainage provided 13 = Outside built, no drainage provided 14 = Make shift 15 = None 96 = Other	10 = Inside, specific room 11 = Inside, no specific room 12 = Outside, built 13 = Make shift 14 = Open space						
HOUSEHOLD ASSETS		INFORMATION	POSTAL SERVICES	MOSQUITO NETS	SOURCE OF LIVELIHOOD	REMITTANCES							
Does any member of this household own..... (ASSETS)? <i>If Yes, record the number, if 9 or more, write 9</i> <i>If none, record 0</i>		What is the household's main source of information?	Did any member of this household send/receive a letter/parcel by postal services during the last 12 months?	Does this household have any mosquito nets?	What was the main source of the household's livelihood in the last 12 months?	Did the household receive any money or physical items from any relative / family member / friend abroad during the last 12 months?		IF YES IN H29, in which countries do the relatives / family members / friends reside? 1 = Yes; 2 = No; 7 = N/A					
<b>H23</b>		<b>H24</b>	<b>H25</b>	<b>H26</b>	<b>H27</b>	<b>H28</b>	<b>H29</b>	<b>H30</b>					
A: Motor vehicle		10 = Radio 11 = Word of Mouth 12 = Telephone 13 = Print Media 14 = Post Mail 15 = Hand Mail 16 = Television 17 = Community Meetings 18 = Internet 19 = Community Announcer 96 = Other	1 = Yes, Once 2 = Yes, Twice 3 = Yes, Thrice 4 = Yes, 4 times and above 5 = No 8 = Don't Know	1 = Yes 2 = No	A= Given free by Gov't B= Given free by NGO C= Given free by friend/relative D= Bought	10 = Subsistence farming 11 = Commercial farming 12 = Employment income 13 = Business Enterprise 14 = Cottage Industry 15 = Property Income 16 = Family / Friends / Relatives 17 = Institutional or Program support (e.g Red Cross, WFP, e.t.c) 18 = Sale of assets 96 = Other	1 = Yes, both goods and money 2 = Yes, Money only 3 = Yes, Goods only 4 = No 8 = DK	A. Australia B. Canada C. France D. Germany E. India F. Japan G. Kenya H. Libya I. Saudi Arabia J. South Africa K. U.K L. U.S.A M. Sweden N. United Arab Emirates O. Yemen P. South Sudan X. Other country Y. Don't know country of origin					
B: Motor cycle													
C: Bicycle													
D: Wheel Chair													
E: Canoe / Boat													
F: Donkey													

BOOK NUMBER		03		HOUSEHOLD NUMBER			
SECTION 4: HOUSEHOLD CHARACTERISTICS (CONTINUED)							
H31 Does any member in this household have a <b>functional account</b> in the bank or any other financial institution? (Active in last 12 months)  1= Yes, have an account in the Bank 2= Yes, have an account in another financial institution 3= Yes, have both in a bank and another financial institution 4= No 8= DK	H32 How many meals do household members <b>aged 5 years and above</b> usually eat on average per day ?  (Record number of meals in the box provided)	H33 Does every member in this household use <b>soap</b> to bathe?  1 = Yes 2 = No 8 = DK	H34 Did every member in this household take <b>sugar</b> (at least once a day) during the last week?  1 = Yes 2 = No 8 = DK	H35 Do you have <b>salt</b> in the house now?  1 = Yes 2 = No 8 = DK	H36 Does every member in this household have at least <b>two sets of clothing</b> ?  1 = Yes 2 = No 8 = DK	H37 Does every member in this household have at least <b>one pair of shoes</b> ?  WITH EXCEPTION OF CHILDREN AGED ONE YEAR OR LESS  1 = Yes 2 = No 8 = DK	H38 Does every child in this household (i.e. all those under 18 years) have a <b>separate blanket</b> ?  1=Yes 2=No 7=N/A
DE5							
SECTION 5: AGRICULTURAL MODULE							
A1 Does this household currently undertake any of the following agricultural activities 1 =Yes, within EA 2 =Yes, outside EA but within District 3 = No  I. Exotic / Cross breed cattle  II. Local cattle rearing  III. Goat rearing  IV. Sheep rearing  V. Piggery (pig rearing)  VI Poultry/Birds keeping  VII. Rabbit rearing  VIII. Apiculture (Bee keeping )  IX. Aquaculture (fish farming)		A2 IF YES IN A1, how many ..... does this household own?  WITH EXCEPTION OF CHILDREN AGED ONE YEAR OR LESS  1=Yes 2=No 7=N/A		A3 IF YES IN A1, what is the main purpose of production? 1=Home Consumption 2=Sale 7=N/A		A4 List the crops grown on the holding in order of importance  Crop Code If no crop grown, write 97	
H39 Is any member of the household involved in any household-based enterprise?  1 = Yes 2 = No		H40 What is the nature of the enterprise? (If the household has more than one enterprise, record the one considered by the family as the most important)  10 Agriculture 11 Trade 12 Food processing 13 Other manufacturing 14 Services 15 Hotels and Restaurant 16 Mining and Quarrying 98 Other 97 No enterprise					
SECTION 6: DEATHS IN THE HOUSEHOLD IN THE LAST 12 MONTHS							
Did any deaths occur in this household in the last 12 months? I mean from September 2013 upto December 2013. What about from 1st January 2014 to 27th August 2014?		What was the name of the deceased?  If no death in D1, write "Not Applicable" and end Interview		What was the sex of [NAME]?  1 = Male 2 = Female 7 = N/A		What was the cause of [NAME'S] death? 1 = Disease 2 = Accident 3 = Violence 4 = Witchcraft 6 = Others 7 = N/A 8 = DK	
D6-D8-FOR FEMALES WHO DIED AGED 12-54 YEARS		Was [NAME] pregnant at the time of her death?		Did [NAME] die while giving birth?		Did [NAME] die within 6 weeks after delivery?	
D1  1= Yes 2= No 8= Don't know		D2  1)  2)  3)  4)  5)		D3  1)  2)  3)  4)  5)		D4  1)  2)  3)  4)  5)	
D5  1)  2)  3)  4)  5)		D6  1)  2)  3)  4)  5)		D7  1)  2)  3)  4)  5)		D8  1)  2)  3)  4)  5)	
If there is any "YES" in A1, ask Question A5, otherwise write 97 in Question A5							
A5 Which of the household members is the lead holder?  (Record the person number of holder from P0) If not listed, record 00		A6 Does the holding carry out any type of irrigation? 1=Yes 2=No 7=N/A		A7 Does this household own agricultural land?  1 = Yes 2 = No			
01A							

DISTRICT OF PREVIOUS RESIDENCE (P12)					H7-H13, H17			
Central	Eastern	Northern	Western	Country of Previous Residence	Distance Conversion			
101 Kalangala	201 Bugiri	301 Adjumani	401 Bundibugyo	671 Kenya 672 Tanzania 673 Rwanda 674 Burundi 675 South Sudan 676 Dem. Rep. Of Congo 677 Somalia 678 Other Africa 681 United Kingdom 682 Other Europe 683 Asia 684 USA 685 Canada 686 Central & Latin America 687 Australia 688 Oceania 689 Non-Ugandan-Not Stated	1 mile = 1.6 km			
102 Kampala	202 Busia	302 Apac	402 Bushenyi		Mile	Km	Mile	Km
103 Kiboga	203 Iganga	303 Arua	403 Hoima		0.5	= 0.8	16.5	= 26.4
104 Luwero	204 Jinja	304 Gulu	404 Kabale		1.0	= 1.6	17.0	= 27.2
105 Masaka	205 Kamuli	305 Kitgum	405 Kabarole		1.5	= 2.4	17.5	= 28.0
106 Mpigi	206 Kapchorwa	306 Kotido	406 Kasese		2.0	= 3.2	18.0	= 28.8
107 Mubende	207 Katakwi	307 Lira	407 Kibaale		2.5	= 4.0	18.5	= 29.6
108 Mukono	208 Kumi	308 Moroto	408 Kisoro		3.0	= 4.8	19.0	= 30.4
109 Nakasongola	209 Mbale	309 Moyo	409 Masindi		3.5	= 5.6	19.5	= 31.2
110 Rakai	210 Pallisa	310 Nebbi	410 Mbarara		4.0	= 6.4	20.0	= 32.0
111 Sembabule	211 Soroti	311 Nakapiripirit	411 Ntungamo		4.5	= 7.2	20.5	= 32.8
112 Kayunga	212 Tororo	312 Pader	412 Rukungiri		5.0	= 8.0	21.0	= 33.6
113 Wakiso	213 Kaberamaido	313 Yumbe	413 Kamwenge		5.5	= 8.8	21.5	= 34.4
114 Lyantonde	214 Mayuge	314 Abim	414 Kanungu		6.0	= 9.6	22.0	= 35.2
115 Mityana	215 Sironko	315 Amolatar	415 Kyenjojo		6.5	= 10.4	22.5	= 36.0
116 Nakaseke	216 Amuria	316 Amuru	416 Buliisa		7.0	= 11.2	23.0	= 36.8
117 Buikwe	217 Budaka	317 Dokolo	417 Ibanda		7.5	= 12.0	23.5	= 37.6
118 Bukomasimbi	218 Bududa	318 Kaabong	418 Isingiro		8.0	= 12.8	24.0	= 38.4
119 Butambala	219 Bukedea	319 Koboko	419 Kiruhura		8.5	= 13.6	24.5	= 39.2
120 Buvuma	220 Bukwo	320 Maracha	420 Buhweju		9.0	= 14.4	25.0	= 40.0
121 Gomba	221 Butaleja	321 Oyam	421 Kiryandongo		9.5	= 15.2	25.5	= 40.8
122 Kalungu	222 Kaliro	322 Agago	422 Kyegegwa		10.0	= 16.0	26.0	= 41.6
123 Kyankwanzi	223 Manafwa	323 Alebtong	423 Mitooma		10.5	= 16.8	26.5	= 42.4
124 Lwengo	224 Namutumba	324 Amudat	424 Ntoroko		11.0	= 17.6	27.0	= 43.2
	225 Bulambuli	325 Kole	425 Rubirizi		11.5	= 18.4	27.5	= 44.0
	226 Buyende	326 Lamwo	426 Sheema		12.0	= 19.2	28.0	= 44.8
	227 Kibuku	327 Napak			12.5	= 20.0	28.5	= 45.6
	228 Kween	328 Nwoya			13.0	= 20.8	29.0	= 46.4
	229 Luuka	329 Otuke			13.5	= 21.6	29.5	= 47.2
	230 Namayingo	330 Zombo			14.0	= 22.4	30.0	= 48.0
	231 Ngora				14.5	= 23.2	30.5	= 48.8
	232 Serere				15.0	= 24.0	31.0	= 49.6
					15.5	= 24.8	31.5	= 50.4
					16.0	= 25.6	32.0	= 51.2