



National Population and Housing Census 2014

Area Specific Profiles



Kasese District

April 2017

This report presents findings of National Population and Housing Census (NPHC) 2014 undertaken by the Uganda Bureau of Statistics (UBOS). Additional information about the Census may be obtained from the UBOS Head Office, Statistics House, Plot 9 Colville Street, P. O. Box 7186, Kampala, Uganda; Telephone: +256-414 706000 Fax: +256-414 237553; E-mail: ubos@ubos.org; Website: www.ubos.org

Cover Photos: Uganda Bureau of Statistics

Recommended Citation

Uganda Bureau of Statistics 2017, The National Population and Housing Census 2014 – Area Specific Profile Series, Kampala

FOREWORD

Demographic and socio-economic data are useful for planning and evidence-based decision making in any country. Such data are collected through Population Censuses, Demographic and Socio-economic Surveys, Civil Registration Systems and other Administrative sources. In Uganda, however, the Population and Housing Census remains the main source of demographic data, especially at the sub-national level.

Population Census taking in Uganda dates back to 1911 and since then the country has undertaken five such Censuses. The most recent, the National Population and Housing Census 2014, was undertaken under the theme 'Counting for Planning and Improved Service Delivery'. The enumeration for the 2014 Census was conducted in August/September 2014. The Uganda Bureau of Statistics (UBOS) worked closely with different Government Ministries, Departments and Agencies (MDAs) as well as Local Governments (LGs) to undertake the census exercise.

The 2014 Census provides several statistics on different aspects of the population. These include the population size and distribution which is a key indicator used for resource allocation, measurement of the extent of service delivery, decision making and budgeting among others. Other information includes the characteristics of the population, those of the dwellings they live in and information on the Household based Agricultural activities.

On behalf of the Bureau, I would like to appreciate the Government of Uganda for providing the necessary resources and infrastructure for undertaking the National Population and Housing Census (NPHC) 2014. In addition, the Bureau would like to thank the Development Partners, particularly United Kingdom Aid (UKAid), the United Nations Fund for Population Activities (UNFPA) and the United Nations Children's Fund (UNICEF) for providing technical and financial support towards the Census. The Bureau would also like to thank the Media for creating awareness about the Census 2014 and, most importantly, the individual households who voluntarily provided the required information.

Together We Count



Ben Paul Mungyereza
EXECUTIVE DIRECTOR

PREFACE

The Uganda Bureau of Statistics Act No. 12 of 1998 provides for the Minister responsible for Planning to direct 'that a Census be taken' on any matter specified in the Act. This was the legal basis for conducting the National Population and Housing Census (NPHC) 2014. The long-term objective of the NPHC 2014 is to ensure availability of bench-mark demographic and socio-economic data for use in planning, evidence based decision making, policy formulation and programme evaluation.

In order to support the planning process, the results from the Census 2014 are being released in phases as and when they become available. The Provisional Results Report was released in November, 2014 followed by the Final Results which were released in March 2016 and the Sub-county Reports in June 2016. These reports collectively provided information on the characteristics of the population and households at the national, district and sub-county levels.

The **Constituency Profiles Series** presents the characteristics of the population and household as well as the housing conditions of the population in each parliamentary constituency of the district. For convenience, however, the profiles of all constituencies in one district have been published in one report. In each report, the Appendix has selected national level tables for reference.

Uganda Bureau of Statistics (UBOS) is in the process of producing several other reports including the National Analytical Results (Monograph Series), District-level Analytical Reports and the Census Atlas. These will present detailed findings covering more indicators on different thematic areas. In addition to the above reports, the Bureau will be providing electronic datasets to facilitate deeper analysis of the data.

The Bureau, appeals to Policy Makers, Researchers and Academicians to make extensive use of this information for policy analysis and evidence-based decision-making at different levels of service delivery. Together we can harness information resources from the Census to improve service delivery and create a better Uganda.

ABOUT THE INDICATORS

Household

A group of persons who usually eat and live together. A household may be comprised of one or more persons provided they share the same meal and sleep under the same roof. The persons may be related usually in a family setting or may not be related.

Household population

All those persons who were enumerated in households. It excludes population which was enumerated on the streets (floating population) or those who were living in Institutions such as correction centres, religious institutions and health facility in-patients.

Population size

Refers to the total population count in the country or any geographical location based on the census reference night. It includes all those persons who were enumerated in households and institutions.

Population by age groups or specific age

This is the total count of the household population by a given age, age- groups or special age-groups. It excludes the non-household population.

Education characteristics/indicators

The indicators refer to specific age groups. The official school going age is 6-12 years for primary education, 13-18 years for secondary education and 19-24 years for tertiary education. However, the analysis includes the age-group 6-15 years to take into consideration those who start primary level at more than 6 years.

For those who have never been to school, we consider the age group 15 years and above on the assumption that by age 15, there are minimal chances for one joining school for the first time.

Illiteracy

This is defined as lack of the ability to read and write with understanding in any language. Persons aged 10 years and above who could not read and write responded (Codes 2, 3 and 4) to Question P21 of the Household Questionnaire. The objective of using this indicator is to shed light on the areas that need improvements in the delivery of the services.

Ownership of a birth certificate

Ownership includes all those persons (adults or children) who either had a Short Birth Certificate or a Long Birth Certificate during census enumeration. The analysis is based on specific age categories.

Parental survival and Orphanhood

Parental survival and orphanhood are derived variables which are based on two questions (P10 and P11), whether or not the biological mother/father of the respondent was still alive at the time of the census. Orphans are persons below the age of 18 who have lost any or both of their parents.

Disability

The questions P14 to P17 on functional difficulty are used to determine whether the person has a disability or not. It includes all persons aged 2 years and above. An individual is considered to be disabled if he/she has any one of the 4 questions with at least some difficulty.

Multiple disabilities refer to all persons who reported more than one functional difficulty.

Marriage and Child Bearing

Marital Status refers to all those persons who are living together and consider themselves as married. It includes all forms of consensual union whether legal or non-legal, religious or cultural or non-consensual union.

Employment

Questions on employment were eligible for all household population aged 10 years and above. Currently the age category for the working population 16 -64 years. The analysis is based on specific age groups of children 10-15 years, (other countries define a child as anyone below the age of 16, hence the age group 10-15 years).

Construction materials of the dwelling

The information is derived from the question on “materials used for the roof, floor and wall. Permanent floor materials include concrete, cement screed, tiles, wood, while permanent roof materials include roof tiles, iron sheets, asbestos and concrete.

Status of dwelling

The permanency nature of construction materials determines the status of the dwelling. The idea is to be able to classify a dwelling unit as temporary or permanent.

Access to community services

The choice of indicators is for those households that are beyond the 5 km radius for access to services (access to public/private schools, health facilities and a police station/post). The nearness of the service to the household does not take into consideration whether the services are utilized by the household or not.

Other environmental conditions – waste disposal

Any household was considered to have proper waste disposal if at the time of the census it disposed off solid waste using registered or unregistered waste vendors as well as using skip bins provided by the Municipal authority.

Owner occupied dwellings

These are disaggregated by household headship. The percentages for male and female headed households may not add up to 100. For instance among the female headed households, what proportion are owner occupied? Among the male headed households, what proportion are owner occupied?

Source of energy for lighting – electricity

In the household questionnaire, Question H14 had about four forms of electricity used for lighting (grid, generator, solar, community/thermal plant). Any household that indicated using any of the four forms was considered to have access to electricity.

Household based agricultural activities

A household engaged in agriculture is one which is engaged in any of the following:

Growing of any crops, or rearing animals or involved in bee keeping or forestry/tree growing, and any fish farming. Agricultural activities outside the district were not considered.

TABLE OF CONTENTS

FOREWORD	i
PREFACE.....	ii
ABOUT THE INDICATORS	iii
INTRODUCTION	1
1.1 General Information about Uganda	1
1.2 About the National Population and Housing Census 2014	1
1.3 National Highlights of the 2014 Census Results.....	2
AREA SPECIFIC PROFILES.....	18
KASESE DISTRICT	19
KASESE MUNICIPALITY CONSTITUENCY	28
BUKONJO COUNTY EAST CONSTITUENCY	37
BUKONJO COUNTY WEST CONSTITUENCY	46
BUSONGORA COUNTY NORTH CONSTITUENCY	55
BUSONGORA COUNTY SOUTH CONSTITUENCY	64
APPENDICES	73
Appendix 1: Population by Sex and Type of Residence by District, Uganda 2014	74
Appendix 2: The Household Questionnaire and code list for the National Population and Housing Census 2014.....	77

LIST OF MAPS

- Map 1: Districts of Uganda as of 1st July 2016
- Map 2: Kasese District Parliamentary Constituencies as of 1st July, 2016
- Map 3: Distribution of Population by Sub-county; Kasese District, 2014
- Map 4: Percentage Distribution of Population Aged 6-12 Years Not In School; Kasese District, 2014
- Map 5: Percentage Distribution of Youth Population aged 18-30 Years, Not In School and not working; Kasese District, 2014
- Map 6: Percentage Distribution of Population aged 10-19 Years, Ever Married; Kasese District, 2014
- Map 7: Percentage Distribution of Orphans aged 0-17 Years; Kasese District, 2014
- Map 8: Percentage Distribution of Households within 5 Km and Over to the nearest Public Health Facility; Kasese District, 2014
- Map 9: Percentage Distribution of Households without access to Safe Water; Kasese District, 2014
- Map 10: Percentage Distribution of Households with no Toilet facility; Kasese District, 2014
- Map 11: Percentage Distribution of Households having less than 2 meals a day; Kasese District, 2014

INTRODUCTION

1.1 General Information about Uganda

Location and Size

Uganda is located in East Africa and lies across the equator, about 800 kilometres inland from the Indian Ocean. It lies between Latitude 1° 29' South and 4° 12' North of the Equator as well as Longitude 29° 34' East and 35° 0' East of Greenwich. The country is landlocked, bordered by Kenya in the East; South Sudan in the North; Democratic Republic of Congo in the West; Tanzania in the South; and Rwanda in South West. It has a total area of 241,551 square kilometres, of which the land area covers 200,523 square kilometres.

Administration

The country was divided into 116 districts (as at August/September 2014). The districts were further subdivided into 200 Counties, 1,378 Sub-counties and 6,495 Parishes. The role of these administrative units is to implement and monitor government programmes at the respective levels. Overtime, the administrative units have been sub-divided with the aim of easing administration and improving the delivery of services.

1.2 About the National Population and Housing Census 2014

The overall objective of the National Population and Housing Census (NPHC) 2014 was to provide data that are required for planning at all levels. The NPHC 2014 had three distinct phases namely, the Preparatory Phases, the Enumeration Phase and the Post Enumeration Phase.

The preparatory work for the Census 2014 started in 2008 with development of the overall strategy of undertaking the census. Other preparatory activities included development of the questionnaires, undertaking of the census mapping, conducting the Pilot Census, carrying out the census advocacy and publicity and other administrative support services.

The enumeration phase included recruitment and training of field staff, delivery of enumeration materials, conducting the main census enumeration and retrieval of materials. The census activities in the district were conducted under the overall responsibility of the Chief Administrative Officers (CAOs) or the Executive Director in the case of Kampala Capital City Authority (KCCA). All field staff underwent mandatory ten (10) day training on Census concepts and procedures.

The Census Reference Night was the night of 27th August 2014 and the enumeration was conducted on a de facto basis. The enumeration started on 28th August and continued to 7th September 2014. The Enumerators moved from household to household within the assigned Enumeration Areas (EAs) and administered the Census questionnaire to the Head of household or any other assigned household member through face to face interviews.

The data processing was centrally managed at the Bureau offices. The filled questionnaires were captured with scanning technology and the information extracted using automatic character recognition.

Data quality assurance enhances credibility, usability and utility of data. The Post Enumeration Survey (PES) was used as one of the tools to evaluate the quality of the census data through testing the completeness of coverage and accuracy. The PES enumeration was undertaken in October/November 2014, and it covered 800 EAs distributed in all the districts and Kampala Capital City Authority (KCCA).

1.3 National Highlights of the 2014 Census Results

The results of the NPHC 2014 will be published in phases. The Provisional Census Results were disseminated in November 2014. These gave the number of households and the population by sex for administrative areas down to sub-county level. The first set of the final results of the Census 2014 were published in the Main Report which was released in March 2016. The report includes information on the population size and distribution as well as characteristics of the population and the dwellings they live in. The results showed that the total population of Uganda in 2014 was 34.6 million persons as shown in Table 1.

Between 2002 and 2014, the population increased from 24.2 million to 34.6million. This implied average growth rate of 3.0 percent per annum.

Table 1: Population size and Population Growth Rates, Uganda, 1969-2014

Census year	Male	Female	Total	Inter-censal Period	Average Annual Growth Rate (%)
1969	4,812,447	4,722,604	9,535,051		
1980	6,259,837	6,376,342	12,636,179	1969-1980	2.7
1991	8,185,747	8,485,558	16,671,705	1980-1991	2.5
2002	11,824,273	12,403,024	24,227,297	1991-2002	3.2
2014	17,060,832	17,573,818	34,634,650	2002-2014	3.0

The distribution of the population among the districts is given in Appendix Table 1. Wakiso district had a population of nearly two (2) million, accounting for about six percent of the total population, while some districts were less populous, Kalangala district being the smallest with a population of 53,406 persons. As of 2016, Uganda had a total of 259 urban centres with a total urban population of 7.5 million persons. Thus, 20.2 percent of the total population lived in urban areas. Kampala Capital City was the most populous urban centre with 1.5 million persons.

Table 2 gives the distribution of the population by age. The Table shows that the population of Uganda is quite young, with the proportion of children (below 15 years of age) being 47.9 percent, while the 'Older persons' (aged 60 years and above) constituted only 2.9 percent.

Table 2: Population Distribution by Age, Sex, Residence, and Population Type, Uganda, 2014

Age	Sex		Residence		Population Type		Total
	Male	Female	Rural	Urban	Household	Institutional	
0-4	3,173,950	2,957,078	4,950,513	1,180,515	6,107,155	23,873	6,131,028
5-9	2,834,456	2,717,222	4,557,328	994,350	5,532,230	19,448	5,551,678
10-14	2,462,789	2,457,654	4,024,478	895,965	4,850,926	69,517	4,920,443
15-19	1,917,797	2,038,836	3,052,854	903,779	3,850,134	106,499	3,956,633
20-24	1,442,455	1,743,137	2,263,734	921,858	3,093,846	91,746	3,185,592
25-29	1,143,467	1,342,709	1,743,019	743,157	2,434,180	51,996	2,486,176
30-34	908,447	1,043,292	1,429,283	522,456	1,914,351	37,388	1,951,739
35-39	726,355	809,482	1,148,883	386,954	1,512,237	23,600	1,535,837
40-44	617,034	655,383	991,874	280,543	1,252,338	20,079	1,272,417
45-49	452,081	469,043	728,958	192,166	909,783	11,341	921,124
50-54	371,126	436,977	657,004	151,099	797,368	10,735	808,103
55-59	224,765	255,519	394,952	85,332	475,744	4,540	480,284
60-64	195,283	244,770	369,504	70,549	434,218	5,835	440,053
65-69	136,107	165,043	257,208	43,942	299,351	1,799	301,150
70-74	115,862	161,374	237,097	40,139	273,582	3,654	277,236
75-79	69,095	81,378	128,636	21,837	149,567	906	150,473
80-84	51,871	79,398	110,736	20,533	127,984	3,285	131,269
85-89	21,572	30,204	43,246	8,530	50,735	1,041	51,776
90-94	15,125	22,046	29,989	7,182	34,339	2,832	37,171
95 and above	18,212	26,256	37,186	7,282	41,231	3,237	44,468
Total	16,897,849	17,736,801	27,156,482	7,478,168	34,141,299	493,351	34,634,650

Characteristics of the Population

About 87 percent of the boys and girls of primary school going age (6-12 years) were attending school, while about 1 in every 10 children of primary school going age children had never been school. The Illiteracy status Rate was 72 percent among persons aged 10 years and above. Out

of the 17.7 million persons of working age (aged 14 to 64 years), 13.8 million (78 percent) were working in the (Labour Force), with the most common occupation being subsistence farming (65%).

Vulnerability can be assessed at personal and household level. At personal level, vulnerability is a state of being in which a person is likely to be in a risky situation, suffering significant physical, emotional, or mental harm that may result in his/her human rights not being fulfilled (MoGLSD, 2004). The 2014 Census measured some of the dimensions of Child Vulnerability. The results show high levels of vulnerability as highlighted below;

- One in every eight (12.5%) of children aged 6 – 12 Years were not in school;
- Two out of every 25 (8%) children less than 18 years of age were orphaned;
- One in every 16 (6%) of the girls aged 12 to 17 years had already given birth;
- One in every 15 (6.5%) of the girls aged 12 – 17 had ever been in a marriage union;
- Seven out of every 10 Children (70%) aged less than five years did not have a Birth certificate.

There was a general improvement in the demographics of the population with the Total Fertility Rate falling to 5.8 children per woman while the infant Mortality Rate decreased to 53 deaths per 1,000 live births. The Life Expectancy at Birth also increased to 63.3 years

Characteristics of the Households

The household population consisted of (99 percent of the total population.) The Census 2014 enumerated a total of 7.3 million households with a population of 34.1 million .This gave an Average Household Size of 4.7.

The ‘Tadooba’ remained the most common source of lighting being used by 52 percent of the households. Only one in every five households (20%) had access to electricity. On the other hand, Wood fuel was the most common fuel used for cooking, with only six percent (one in every 16) of the households using other fuels. Sanitation remains a challenge with only thirty percent of the households with unimproved toilet facilities. About 600,000 households did not have any toilet facility at all.

The majority of the households (69 percent) derived their livelihood from subsistence farming. Only 27% of the households depended on earned income. One in every nine households (11%) were having only one meal per day (for adults). Some of the households (11%) received remittances from abroad in cash or in kind. More than two thirds of the households (69%) had at least one member owning a Mobile phone. Ownership of a Mobile among persons aged 10 years and above was at 38 percent. The radio remains a dominant source of information and about 60 percent of the households owned a radio.

Housing Conditions

The housing sector recorded a general improvement. Overall, 67 percent of households in Uganda resided in detached dwellings. However, nearly half (47%) households resided in dwellings with only one room for sleeping. There was also significant improvement in the materials used for construction of the dwellings. About 44% of the households resided in dwellings constructed with permanent wall material. The equivalent shares for roof and floor were 70 and 34 percent respectively.

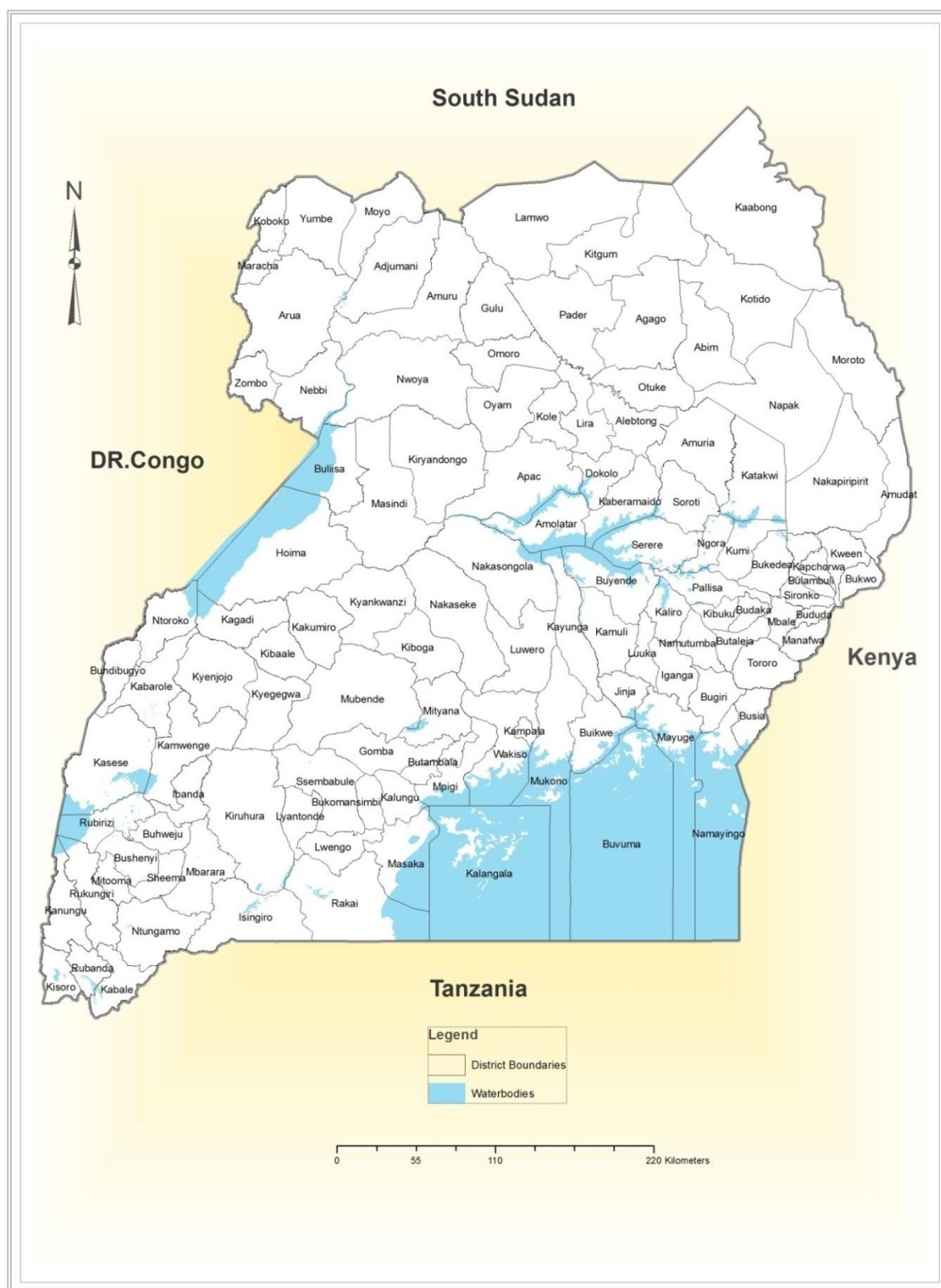
Agricultural Activities

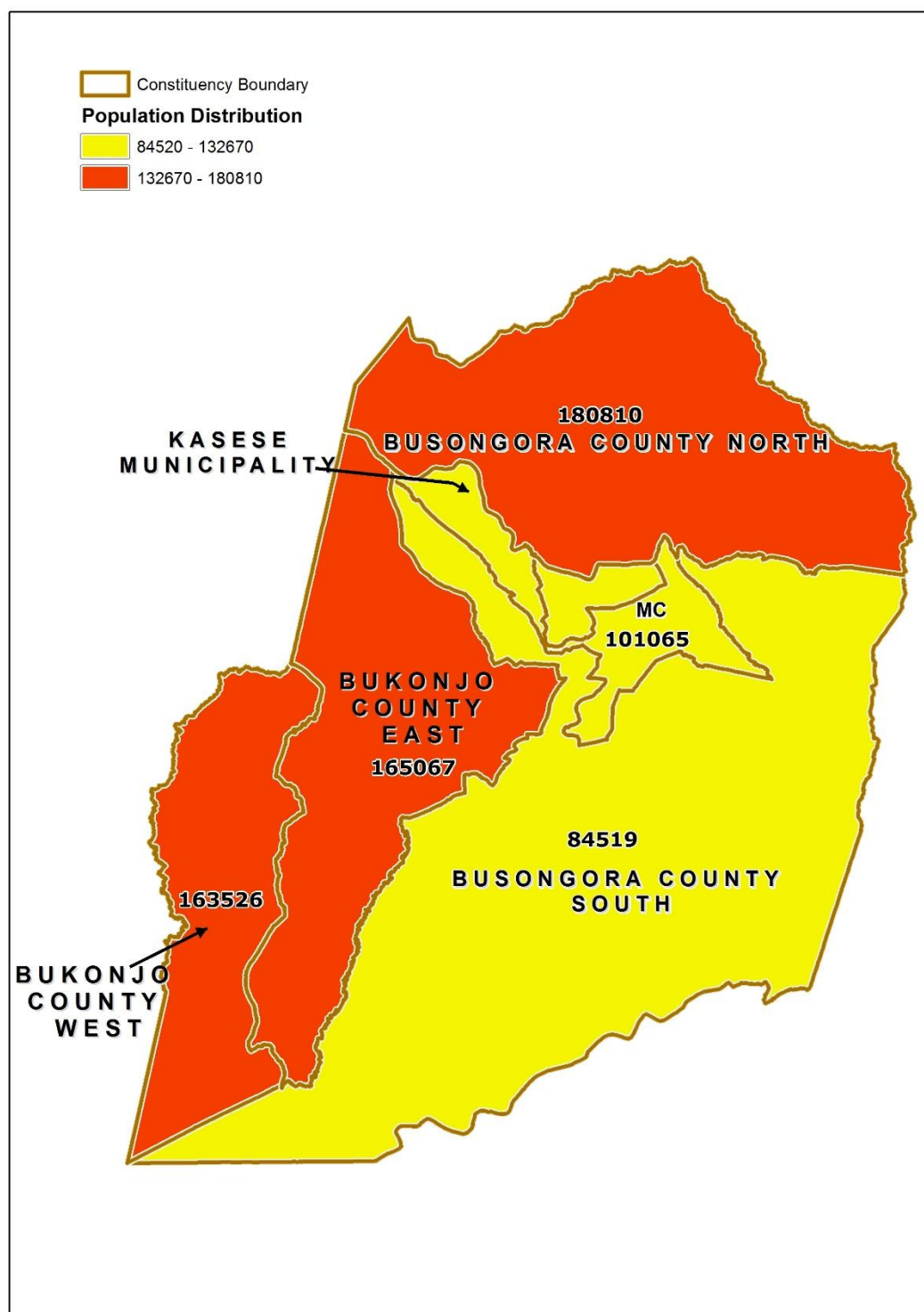
Agriculture has remained a dominant sector in the economy. The Census revealed that a total of 5.8 million households engage in agriculture. More than two thirds (69 percent) of households derived their livelihoods from subsistence farming as the main source of earning. In terms of employment, the majority of the working population (65 percent) were subsistence farmers.

POPULATION SIZE

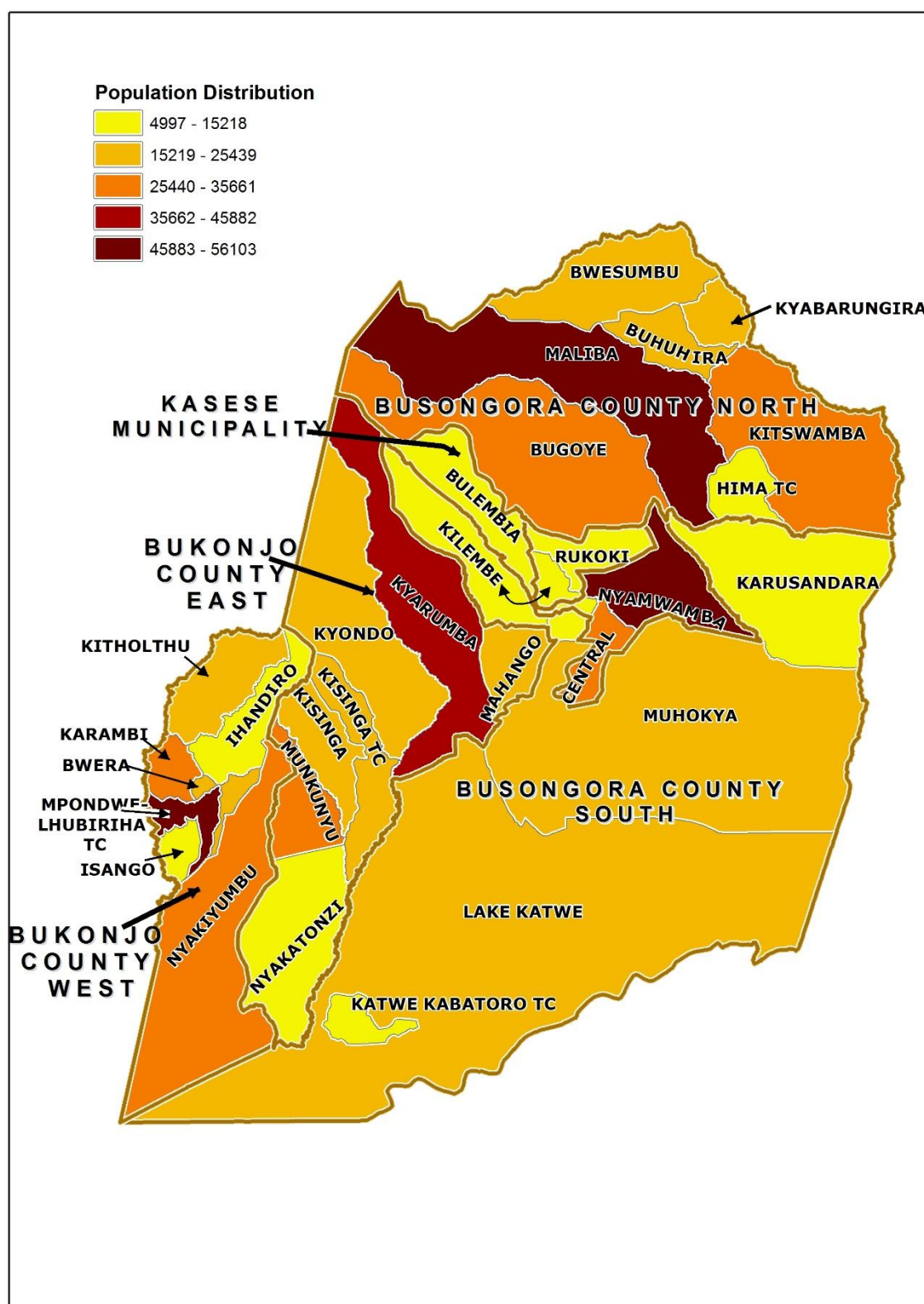
Table 3: Total population by age group and sex, Kasese District, 2014

Age group	Male	Female	Total
0-9	125,354	118,016	243,370
10-19	86,385	88,844	175,229
20-39	82,356	99,778	182,134
40-59	32,254	36,394	68,648
60+	11,866	13,740	25,606
Total	338,215	356,772	694,987

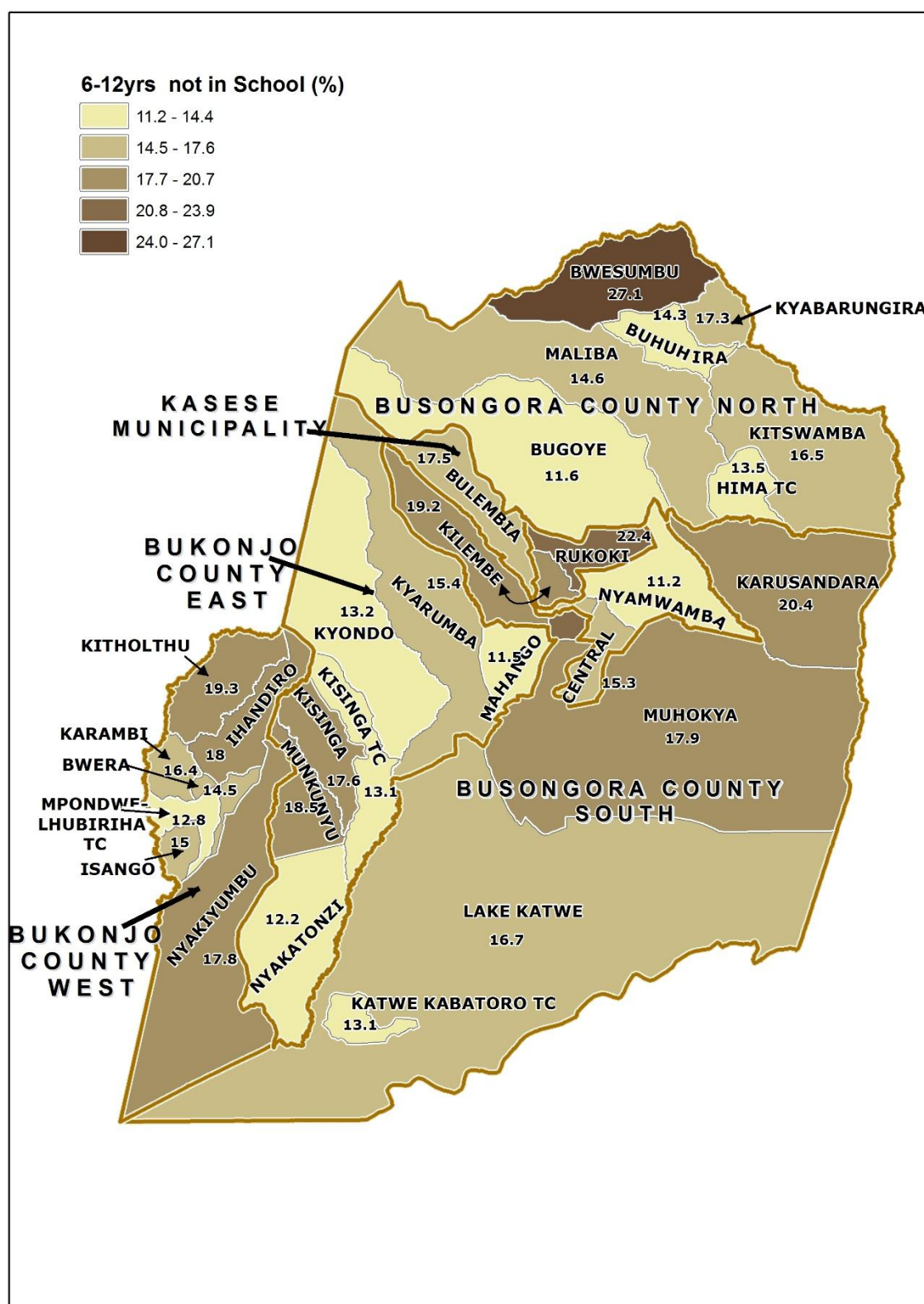
Map 1: Districts of Uganda as of 1st July 2016

Map 2: Kasese District Parliamentary Constituencies as of 1st July, 2016

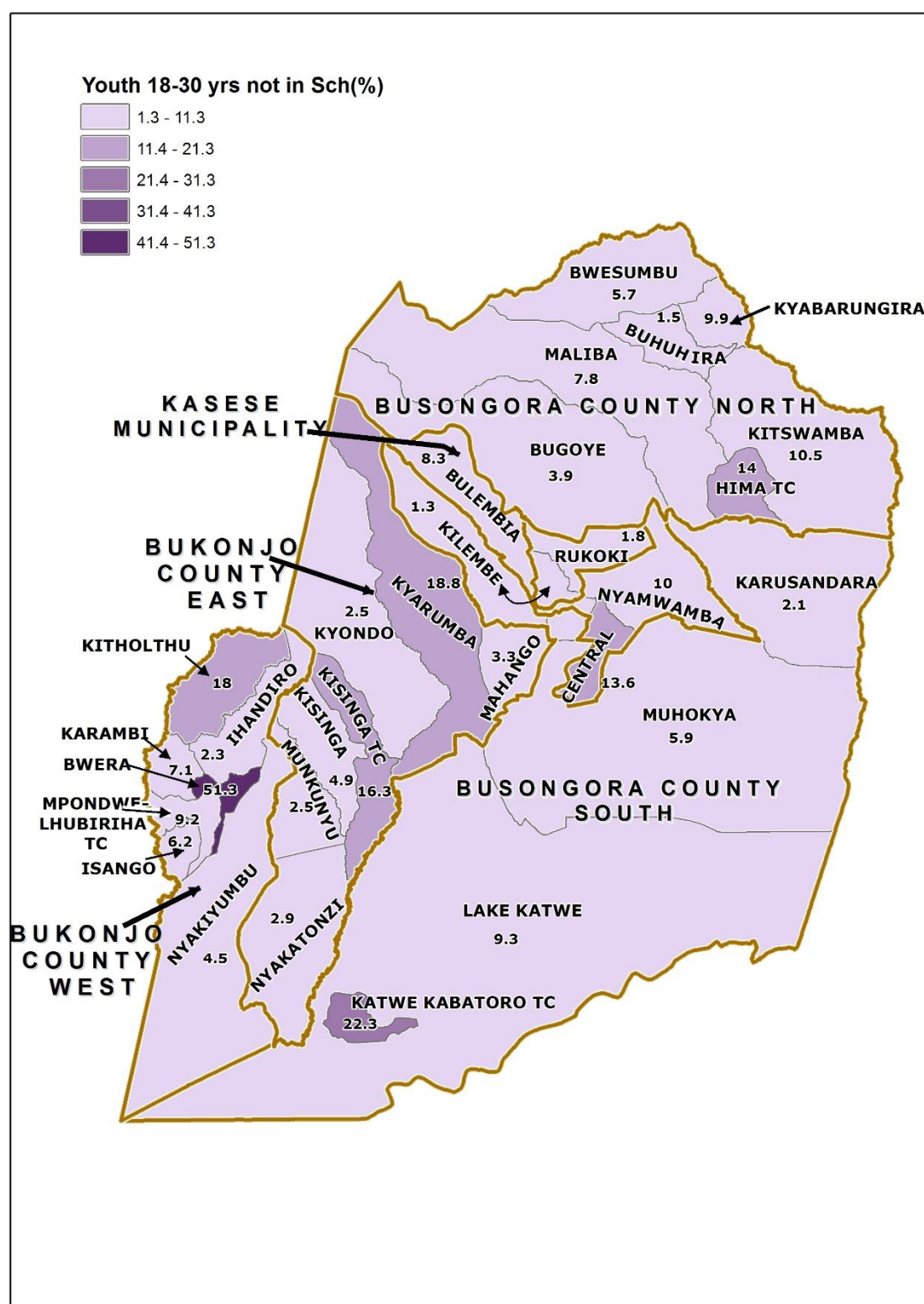
Map 3: Distribution of Population by Sub-county; Kasese District, 2014



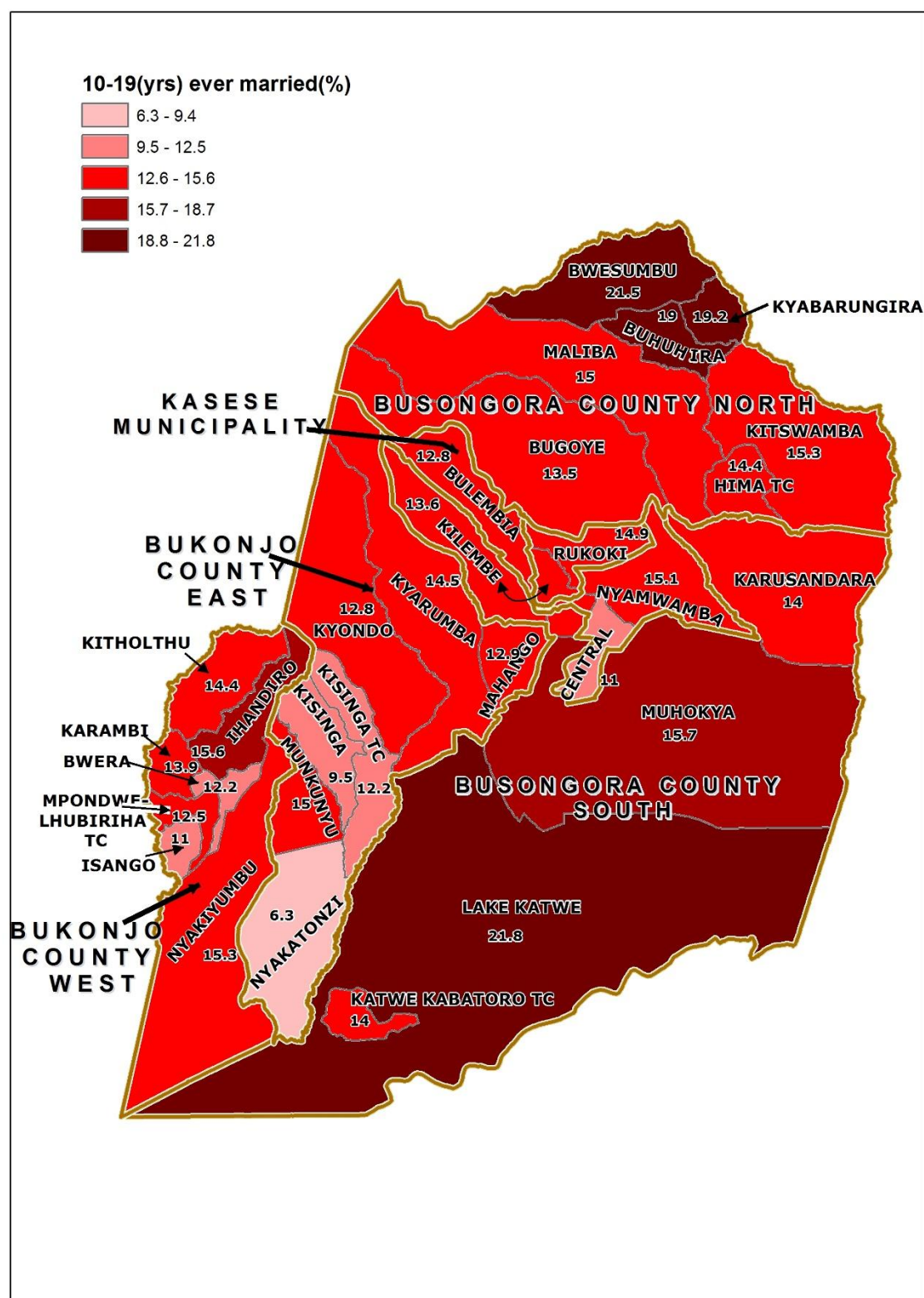
Map 4: Percentage Distribution of Population Aged 6-12 Years Not in School; Kasese District, 2014



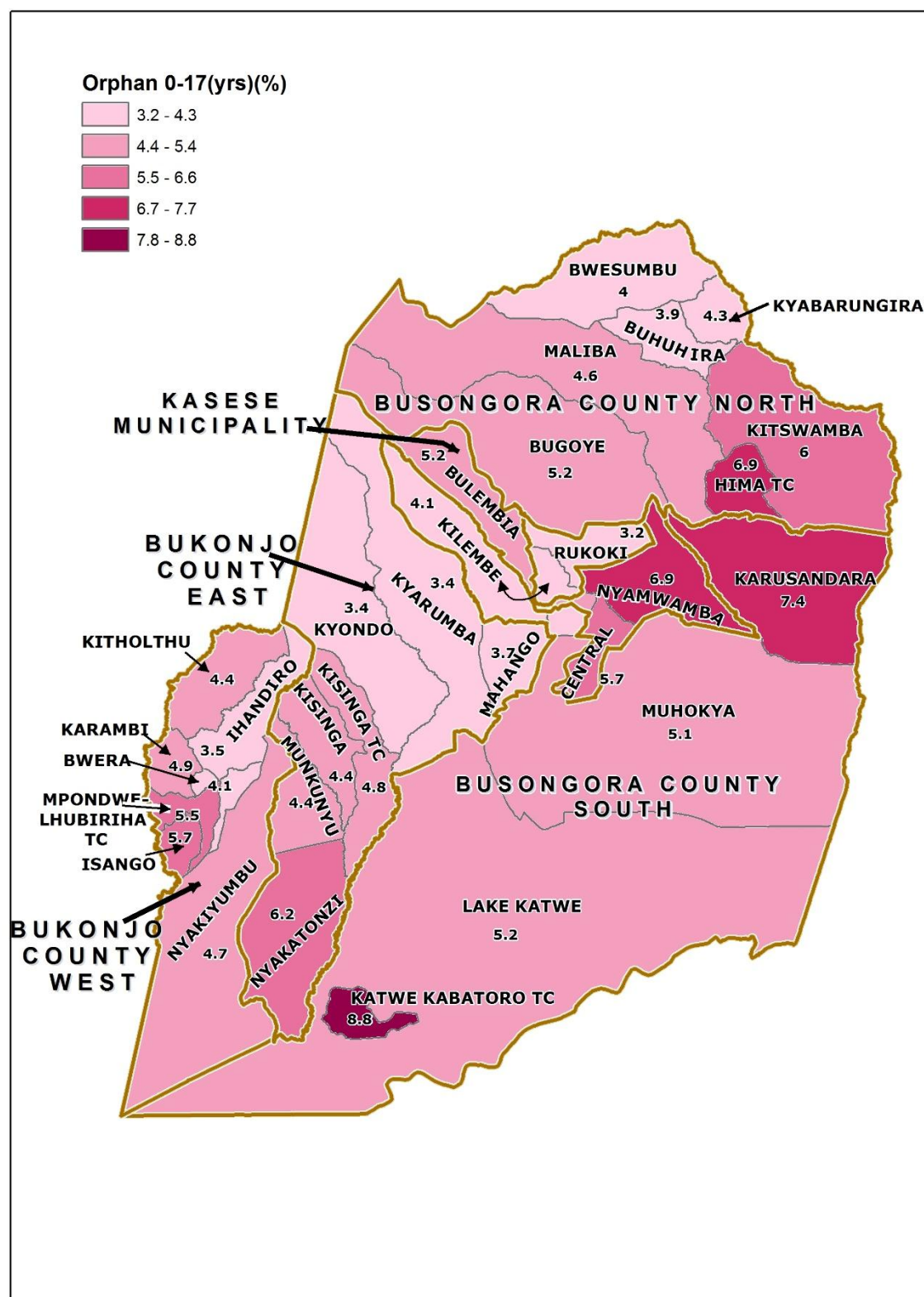
Map 5: Percentage Distribution of Youth Population aged 18-30 Years, not in School and not working;
Kasese District, 2014



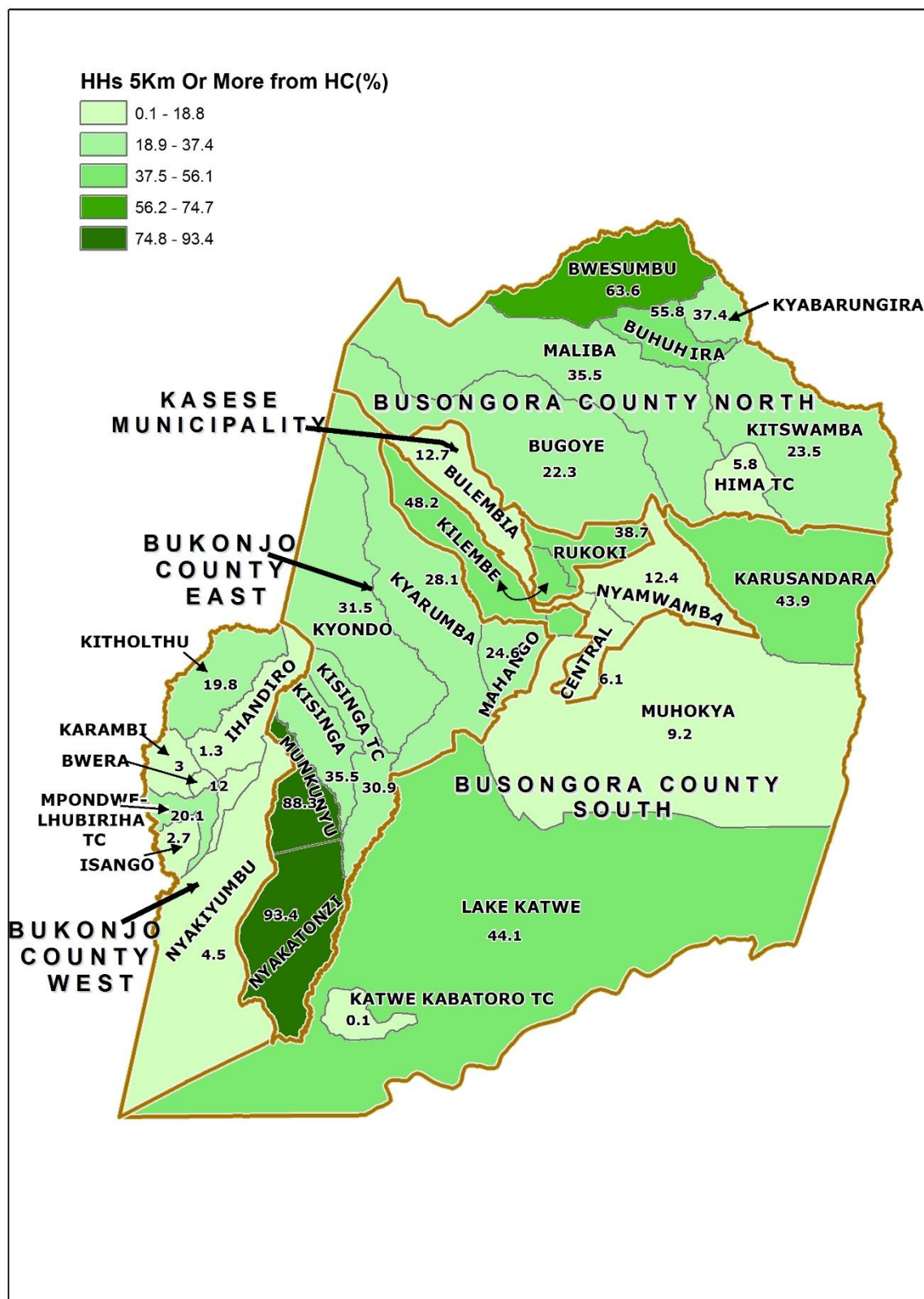
Map 6: Percentage Distribution of Population aged 10-19 Years, Ever Married; Kasese District, 2014



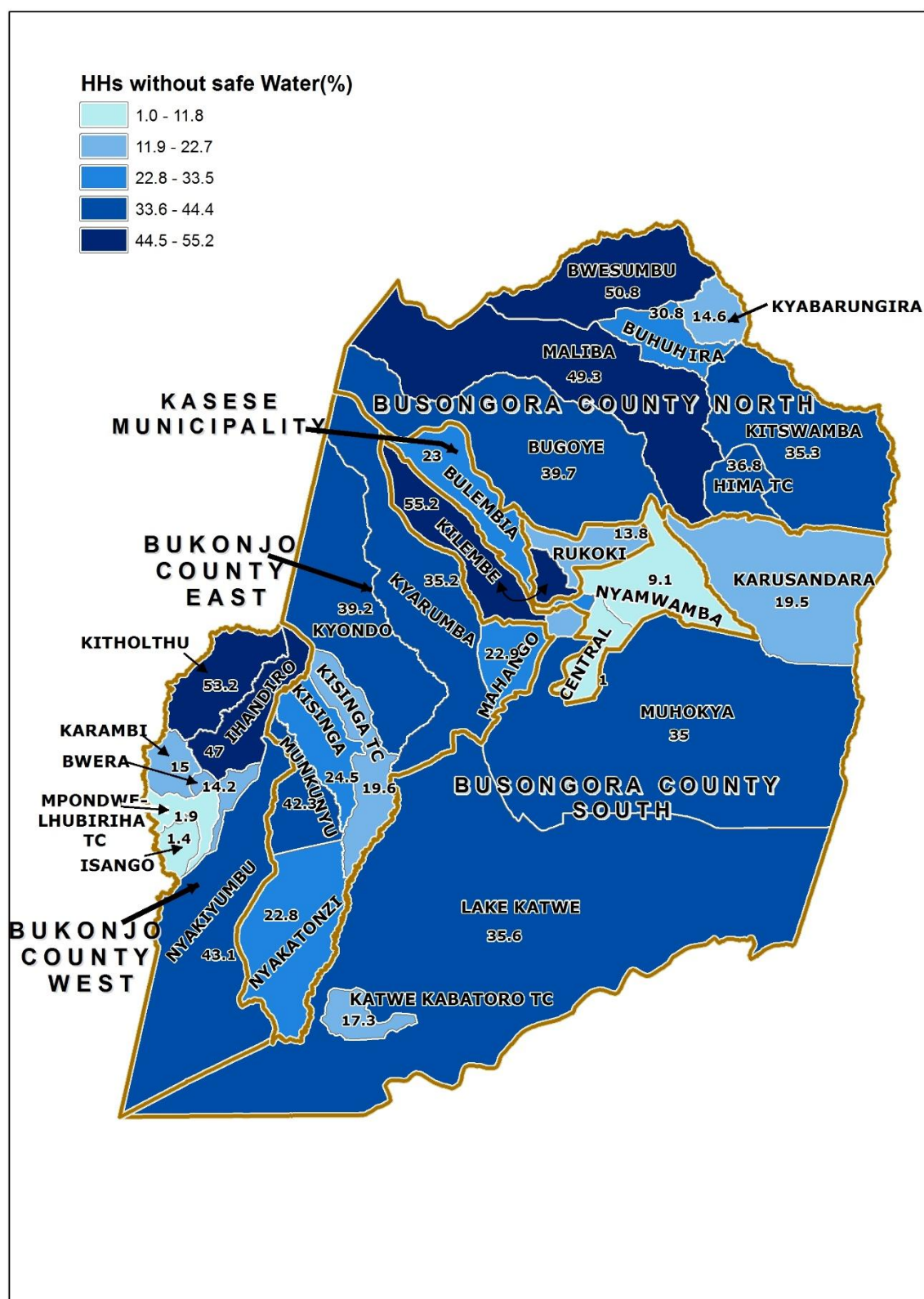
Map 7: Percentage Distribution of Orphans aged 0-17 Years; Kasese District, 2014



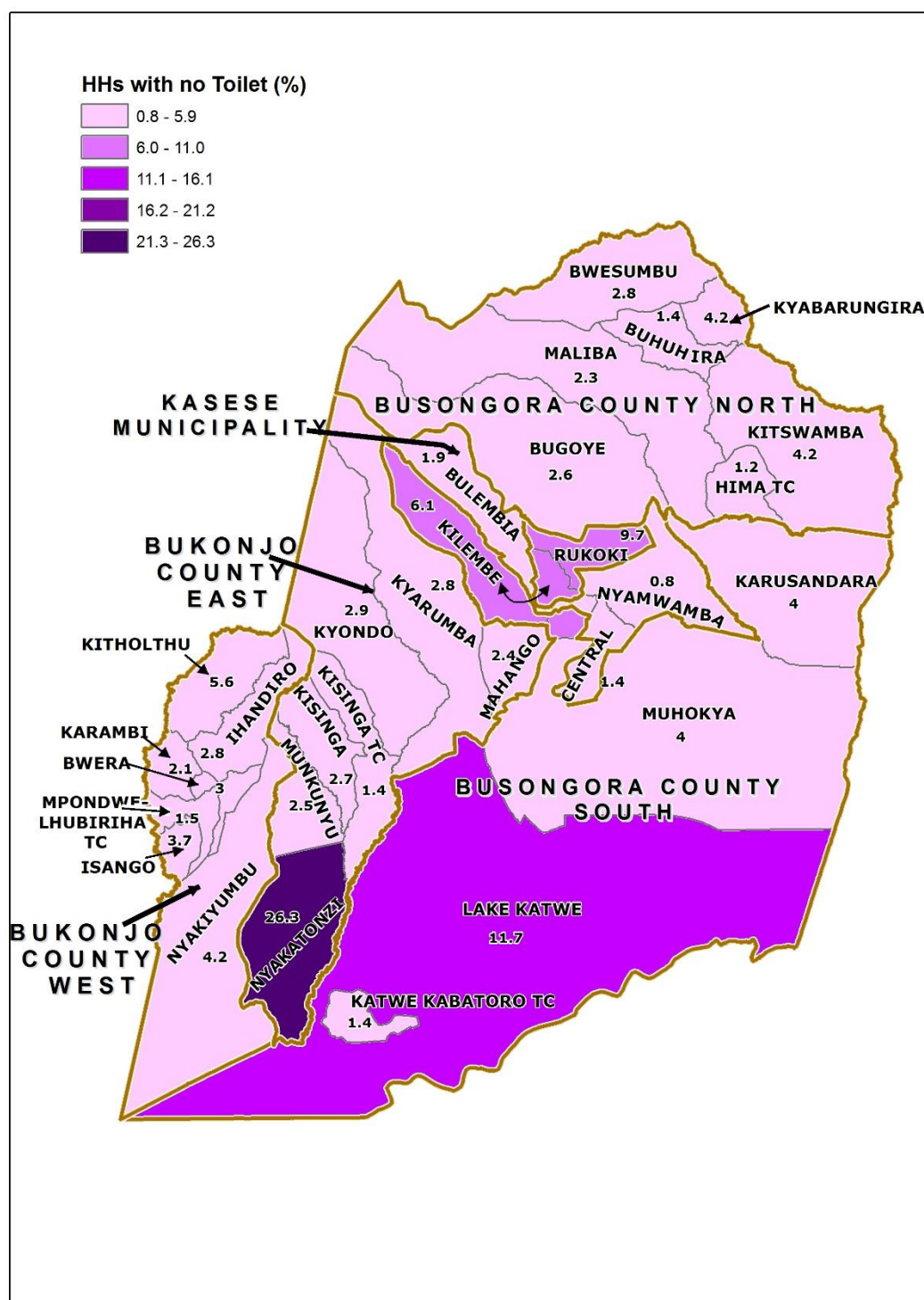
Map 8: Percentage Distribution of Households 5 Km and over to the nearest Public Health Facility; kasese District, 2014



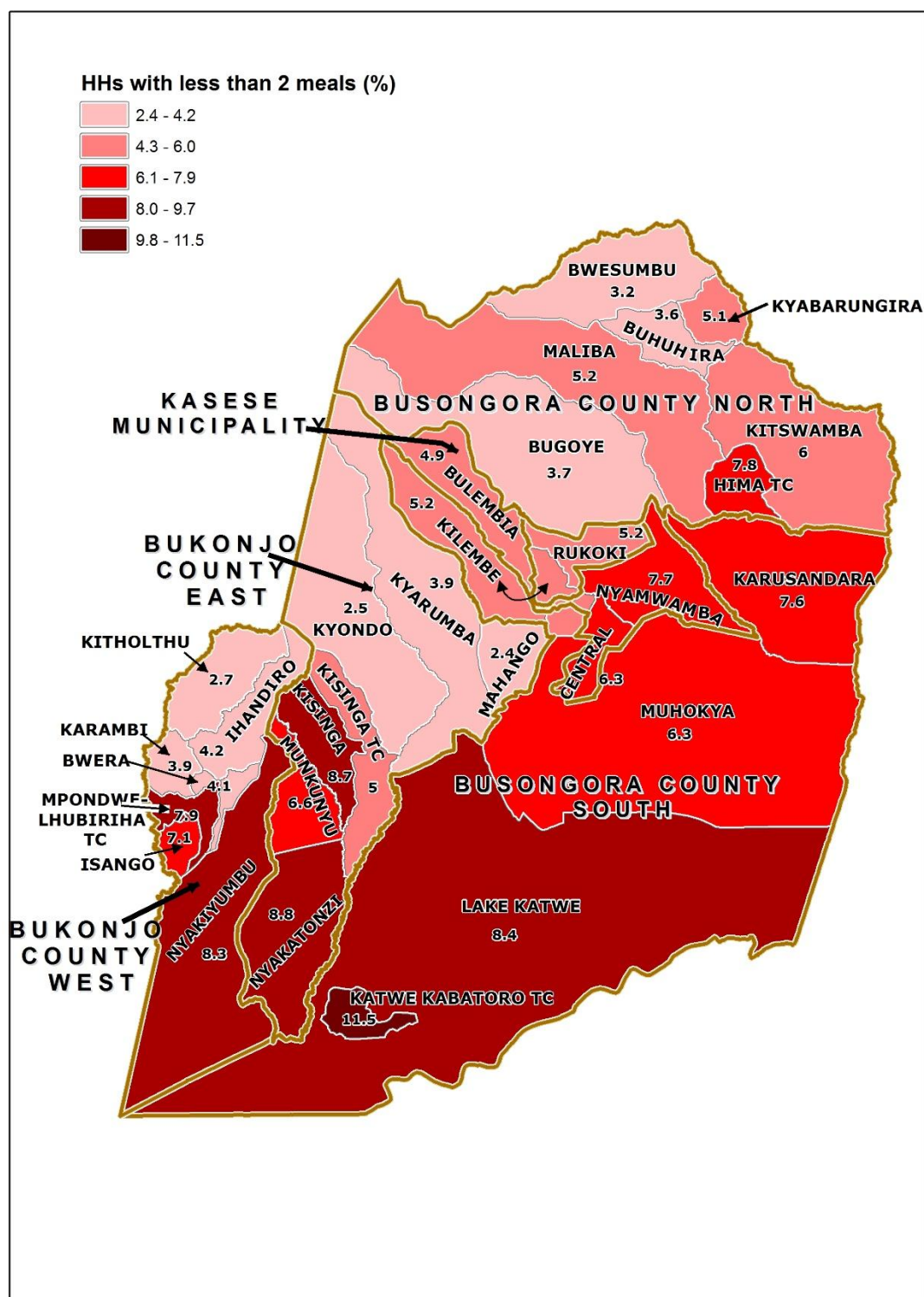
Map 9: Percentage Distribution of Households without access to Safe Water; Kasese District, 2014



Map 10: Percentage Distribution of Households with no Toilet facility; Kanungu District, 2014



Map 11: Percentage Distribution of Households having less than 2 meals a day; Kasese District, 2014



AREA SPECIFIC PROFILES

KASESE DISTRICT

LIST OF TABLES

1	Population
2	Education
3	Illiteracy status
4	Ownership of a Birth Certificate
5	Parental Survival and Orphanhood
6	Disability
7	Marriage and Child Bearing
8	WORKING STATUS
9	Use of ICT
10	Housing Conditions
11	Access to Community Services
12	Household Health and Hygiene
13	Household Assets
14	Other Household Characteristics
15	Household Based Agricultural Activities

1: POPULATION

1.1: Population Size	Number	Percent
Total population	694,987	
Total male population	338,215	48.7
Total female population	356,772	51.3
Sex ratio (males per 100 females)	94.8	
1.2: Households	Number	Percent
Total households	139,406	
Households headed by males	111,421	79.9
Households headed by females	27,985	20.1
Households headed by children (aged 10-17 years)	625	0.4
Households headed by youth (aged 18-30 years)	39,043	28
Households headed by older persons (aged 60 years and above)	19,557	14
1.3: Population by Age groups	Number	Percent
Population aged 0-17 years	385,664	56
Population aged 18-30 years	154,730	22.5
Population aged 31-59 years	123,163	17.9
Population aged 60 years and over	25,205	3.7
1.4: Population by Special Age groups	Number	Percent
Population aged Less than one Year	25,427	3.7
Population aged 0-4 Years	130,140	18.9
Population aged 0-8 Years	223,137	32.4
Population aged 2-8 Years	173,456	25.2
Population aged 2-17 Years	335,983	48.8
Population aged 6-12 Years	147,516	21.4
Population aged 6-15 Years	200,377	29.1
Population aged 10-15 Years	111,899	16.2
Population aged 10-17 Years	142,824	20.7
Population aged 15-24 Years	139,000	20.2
Population aged 16-64 Years	317,861	46.1
Population aged 15-29 Years	187,491	27.2
Population aged 2 Years and Over	639,081	92.8
Population aged 10 Years and Over	445,922	64.7
Population aged 15 Years and Over	348,915	50.7
Population aged 18 Years and Over	303,098	44
Population aged 20 Years and Over	272,281	39.5
Population aged 65 Years and over	16,162	2.3

2: EDUCATION

2.1: Non School attendance of	Number	Percent
Persons aged 6-15 years not attending school	22,467	11.2
Males aged 6-15 years not attending school	11,756	11.6
Females aged 6-15 years not attending school	10,711	10.8
2.2: Persons attending Primary school	Number	Percent
Persons aged 6-12 years attending primary school	124,447	84.4
Males aged 6-12 years attending primary school	62,474	83.5
Females aged 6-12 years attending primary school	61,973	85.2
2.3: Persons attending Secondary school	Number	Percent
Persons aged 13-18 years attending secondary school	30,277	29.8
Males aged 13-18 years attending secondary school	15,469	30.9
Females aged 13-18 years attending secondary school	14,808	28.7
2.4: Persons not in School and Highest Level Completed is below S.4	Number	Percent
Persons aged 15 years and above whose highest level of education completed is below S.4	193,584	82.6
Males aged 15 years and above whose highest level of education completed is below S.4	88,227	78.8
Females aged 15 years and above whose highest level of education completed is below S.4	105,357	86.1
2.5: Persons not in School and Highest Level Completed is "O" Level	Number	Percent
Persons aged 18 years and above whose highest level of education completed is "O" level (S.4)	20,121	6.6
Males aged 18 years and above whose highest level of education completed is "O" level (S.4)	10,963	8.0
Females aged 18 years and above whose highest level of education completed is "O" level (S.4)	9,158	5.5
2.6: Persons not in School and Highest Level Completed is "A" Level	Number	Percent
Persons aged 20 years and above whose highest level of education completed is "A" level (S.6)	3,926	1.4
Males aged 20 years and above whose highest level of education completed is "A" level (S.6)	2,938	2.4
Females aged 20 years and above whose highest level of education completed is "A" level (S.6)	988	0.7

3: ILLITERACY STATUS

3.1: Persons aged 18 years and above	Number	Percent
Persons aged 18 years and above who are illiterate	97,155	32.1
Males aged 18 years and above who are illiterate	31,593	23.0
Females aged 18 years and above who are illiterate	65,562	39.6
3.2: Other age groups	Number	Percent
Persons aged 10-17 years who are illiterate	35,576	24.9
Persons aged 18-30 years who are illiterate	31,033	20.1
Persons aged 60 years and above who are illiterate	17,912	71.1

4: OWNERSHIP OF A BIRTH CERTIFICATE

4.1: Children with Birth Certificates	Number	Percent
Children less than 1 year who have a Birth Certificate	8,526	33.5
Children less than 5 years who have a Birth Certificate	51,370	39.5
Children 0-8 years who have a Birth Certificate	93,655	42.0
Children 0-17 years who have a Birth Certificate	157,530	42.5

5: PARENTAL SURVIVAL AND ORPHANHOOD

5.1: Children 0-8 years	Number	Percent
Children 0-8 years who have lost one parent	4,910	2.2
Children 0-8 years who have lost both parents	234	0.1
Children 0-8 years who have lost at least a parent (total number of orphans)	5,144	2.3
Children 0-8 years who have both parents	217,993	97.7
5.2: All children (0-17 years)	Number	Percent
Children 0-17 years who have lost one parent	17,389	4.5
Children 0-17 years who have lost both parents	1,360	0.4
Children 0-17 years who have lost at least a parent (total number of orphans)	18,749	4.9
Children 0-17 years who have both parents	366,915	95.1

6: DISABILITY

6.1: Persons with a disability	Number	Percent
Persons aged 2 years and above with a disability	59,031	9.2
Persons aged 2 years and above with a seeing disability	30,846	4.8
Persons aged 2 years and above with a hearing disability	14,438	2.3
Persons aged 2 years and above with a walking disability	18,877	3.0
Persons aged 2 years and above with a remembering disability	28,046	4.4
Persons aged 2 years and above with multiple disabilities	18006	31.8
Children aged 2-17 years with a disability	13,118	3.9
Youth aged 18-30 years with a disability	8,767	5.7
Older persons aged 60 years and above with a disability	14,483	57.5

7: MARRIAGE AND CHILDBEARING

7.1: Marital status of the population	Number	Percent
Persons aged 10 years and above who are married	117,182	49.4
Persons aged 18 years and above who are married	113,043	68.3
Females aged 50 years and above who are widowed	8,516	30.9
Females aged 10-17 years who have ever been married	5,028	7.0
Females aged 10-19 years who have ever been married	12,665	14.4
7.2: Females who have had a birth	Number	Percent
Females aged 12-17 years who have given birth	5,069	9.6
Females aged 12-19 years who have given birth	12,395	17.9

8: WORKING STATUS

8.1: Working persons	Number	Percent
Persons aged 10-15 years who were working	59,345	53.0
Persons aged 10-17 years who were working	79,062	55.4
Persons aged 18-30 years who were working	127,990	82.7
Persons aged 16-64 years who were working	269,215	84.7
Persons aged 18 years and above who were working	260,986	86.1
Persons aged 60 years and above who were working	19,434	77.1
8.2: Youths Not working and not in school		
Youths (Persons aged 18-30 years) who were neither working nor in school	12,101	7.8

9: USE OF ICT

9.1: Mobile phone ownership (10 years and above)	Number	Percent
Persons aged 10 years and above that own at least one mobile phone	168,906	37.9
Males aged 10 years and above that own at least one mobile phone	92,876	44.4
Females aged 10 years and above that own at least one mobile phone	76,030	32.1
9.2: Mobile phone ownership (18-30 years)	Number	Percent
Persons aged 18-30 years and above that own at least one mobile phone	80,975	52.3
Males aged 18-30 years and above that own at least one mobile phone	42,275	61.3
Females aged 18-30 years and above that own at least one mobile phone	38,700	45.1
9.3: Internet Usage (10 years and above)	Number	Percent
Persons aged 10 years and above that use internet	26,036	5.8
Males aged 10 years and above that use internet	16,896	8.1
Females aged 10 years and above that use internet	9,140	3.9
9.4: Internet Usage (18-30 years)	Number	Percent
Persons aged 18-30 years that use internet	15,092	9.8
Males aged 18-30 years that use internet	9,427	13.7
Females aged 18-30 years that use internet	5,665	6.6

10: HOUSING CONDITIONS

10.1: Construction Materials For the Dwelling Units	Number	Percent
Households living in dwelling units constructed using permanent roof materials	130,914	93.9
Households living in dwelling units constructed using permanent wall materials	69,995	50.2
Households living in dwelling units constructed using permanent floor materials	36,721	26.3
10.2: Status of Dwelling Units	Number	Percent
Households living in semi-permanent dwelling units	96,933	69.5
Households living in temporary dwelling units	8,090	5.8

11: ACCESS TO COMMUNITY SERVICES

11.1: Access to a Primary school	Number	Percent
Households that are 5 km or more to the nearest primary school, <u>whether public or private</u>	13,219	9.5
Households that are 5 km or more to the nearest <u>public</u> primary school	18,519	13.3
11.2: Access to a Secondary school	Number	Percent
Households that are 5 km or more to the nearest secondary school, <u>whether public or private</u>	34,362	24.6
Households that are 5 km or more to the nearest <u>public</u> secondary school	59,299	42.5
11.3: Access to a Health Facility	Number	Percent
Households that are 5 km or more to the nearest health facility, <u>whether public or private</u>	26,200	18.8
Households that are 5 km or more to the nearest <u>public</u> health facility	36,966	26.5
11.4: Access to a Police post /Police station	Number	Percent
Households that are 5 km or more to the nearest Police Post/Police Station	32,547	23.3

12: HOUSEHOLD HEALTH AND HYGIENE

12.1:Ownership of Mosquito nets	Number	Percent
Households that own at least a mosquito net	133,181	95.5
Households that own at least a mosquito net that was received free (Government /NGO)	129,649	97.3
12.2: Source Of Water For Drinking	Number	Percent
Households that have access to piped water	69,294	49.7
Households that use a bore hole	8,726	6.3
12.3:Ownership of a Toilet facility	Number	Percent
Households without any toilet facility	2,991	2.1
12.4: Other environmental conditions	Number	Percent
Households that <u>properly</u> dispose off solid waste	53,711	38.5
Households which are not living in decent dwellings	135,846	97.4

13: HOUSEHOLD ASSETS

13.1: Owner occupied Dwellings	Number	Percent
Households that are owner occupied	101,839	73.1
Male headed households that are owner occupied	83,509	74.9
Female headed households that are owner occupied	18,330	65.5
13.2: Movable Assets	Number	Percent
Households that own a television	11,475	8.2
Households that own a computer	2,998	2.2
Households that own a bicycle	22,728	16.3
Households that own a radio	89,277	64.0

14: OTHER HOUSEHOLD CHARACTERISTICS

14.1: Main source of information	Number	Percent
Households whose main source of information is a radio	85,532	61.4
Households whose main source of information is a community announcer	2,693	1.9
Households whose main source of information is a telephone	11,049	7.9
14.2: Household Economy and Welfare	Number	Percent
Households that received remittances from abroad in the last 12 months	13,299	9.5
Households where any member possesses a bank account	36,351	26.1
Households that depend on subsistence farming as a main source of livelihood	98,563	70.7
Households with at least one member engaged in a non-agricultural household based enterprise	82,873	85.4
Households where (members aged 5 years and above) consume less than two meals in a day	8,218	5.9
14.3: Source of Energy for lighting	Number	Percent
Households that have access to electricity	23,888	17.1
Households that use tadooba for lighting	93,642	67.2

15: HOUSEHOLD BASED AGRICULTURAL ACTIVITIES

15.1: Household based Agricultural activities	Number	Percent
Households engaged in crop growing	113,083	81.1
Households engaged in maize growing	44,142	31.7
Households engaged in coffee growing	42,824	30.7
Households engaged in growing of beans	95,304	68.4
Households engaged in growing of millet	1,133	0.8
Households engaged in growing of sweet potatoes	11,393	8.2
Households engaged in growing of matooke	23,006	16.5
Households engaged livestock farming	84,861	60.9
Households engaged in either crop growing or livestock farming	118,998	85.4

KASESE MUNICIPALITY CONSTITUENCY

LIST OF TABLES

1	Population
2	Education
3	Illiteracy status
4	Ownership of a Birth Certificate
5	Parental Survival and Orphanhood
6	Disability
7	Marriage and Child Bearing
8	WORKING STATUS
9	Use of ICT
10	Housing Conditions
11	Access to Community Services
12	Household Health and Hygiene
13	Household Assets
14	Other Household Characteristics
15	Household Based Agricultural Activities

1: POPULATION

1.1: Population Size	Number	Percent
Total population	101,065	
Total male population	48,431	47.9
Total female population	52,634	52.1
Sex ratio (males per 100 females)	92	
1.2: Households	Number	Percent
Total households	25,497	
Households headed by males	19,206	75.3
Households headed by females	6,291	24.7
Households headed by children (aged 10-17 years)	240	0.9
Households headed by youth (aged 18-30 years)	9,564	37.5
Households headed by older persons (aged 60 years and above)	1,556	6.1
1.3: Population by Age groups	Number	Percent
Population aged 0-17 years	50,434	50.9
Population aged 18-30 years	27,435	27.7
Population aged 31-59 years	19,149	19.3
Population aged 60 years and over	2,101	2.1
1.4: Population by Special Age groups	Number	Percent
Population aged Less than one Year	3,778	3.8
Population aged 0-4 Years	17,559	17.7
Population aged 0-8 Years	29,274	29.5
Population aged 2-8 Years	22,162	22.4
Population aged 2-17 Years	43,322	43.7
Population aged 6-12 Years	18,247	18.4
Population aged 6-15 Years	25,220	25.4
Population aged 10-15 Years	14,105	14.2
Population aged 10-17 Years	18,607	18.8
Population aged 15-24 Years	22,385	22.6
Population aged 16-64 Years	51,887	52.3
Population aged 15-29 Years	31,787	32.1
Population aged 2 Years and Over	92,007	92.8
Population aged 10 Years and Over	67,292	67.9
Population aged 15 Years and Over	55,325	55.8
Population aged 18 Years and Over	48,685	49.1
Population aged 20 Years and Over	43,858	44.2
Population aged 65 Years and over	1,300	1.3

2: EDUCATION

2.1: Non School attendance of	Number	Percent
Persons aged 6-15 years not attending school	2,159	8.6
Males aged 6-15 years not attending school	988	8.1
Females aged 6-15 years not attending school	1,171	9.0
2.2: Persons attending Primary school	Number	Percent
Persons aged 6-12 years attending primary school	15,904	87.2
Males aged 6-12 years attending primary school	7,771	86.3
Females aged 6-12 years attending primary school	8,133	88.0
2.3: Persons attending Secondary school	Number	Percent
Persons aged 13-18 years attending secondary school	5,938	42.0
Males aged 13-18 years attending secondary school	2,754	43.9
Females aged 13-18 years attending secondary school	3,184	40.6
2.4: Persons not in School and Highest Level Completed is below S.4	Number	Percent
Persons aged 15 years and above whose highest level of education completed is below S.4	27,268	66.4
Males aged 15 years and above whose highest level of education completed is below S.4	11,765	61.6
Females aged 15 years and above whose highest level of education completed is below S.4	15,503	70.5
2.5: Persons not in School and Highest Level Completed is "O" Level	Number	Percent
Persons aged 18 years and above whose highest level of education completed is "O" level (S.4)	5,928	12.2
Males aged 18 years and above whose highest level of education completed is "O" level (S.4)	2,878	12.9
Females aged 18 years and above whose highest level of education completed is "O" level (S.4)	3,050	11.6
2.6: Persons not in School and Highest Level Completed is "A" Level	Number	Percent
Persons aged 20 years and above whose highest level of education completed is "A" level (S.6)	1,505	3.4
Males aged 20 years and above whose highest level of education completed is "A" level (S.6)	1,036	5.1
Females aged 20 years and above whose highest level of education completed is "A" level (S.6)	469	2.0

3: ILLITERACY STATUS

3.1: Persons aged 18 years and above	Number	Percent
	8,476	17.4
Persons aged 18 years and above who are illiterate		
	2,714	12.1
Males aged 18 years and above who are illiterate		
	5,762	21.9
Females aged 18 years and above who are illiterate		
3.2: Other age groups	Number	Percent
	2,836	15.2
Persons aged 10-17 years who are illiterate		
	3,206	11.7
Persons aged 18-30 years who are illiterate		
	1,163	55.4
Persons aged 60 years and above who are illiterate		

4: OWNERSHIP OF A BIRTH CERTIFICATE

4.1: Children with Birth Certificates	Number	Percent
Children less than 1 year who have a Birth Certificate	2,044	54.1
Children less than 5 years who have a Birth Certificate	10,484	59.7
Children 0-8 years who have a Birth Certificate	17,693	60.4
Children 0-17 years who have a Birth Certificate	28,416	58.9

5: PARENTAL SURVIVAL AND ORPHANHOOD

5.1: Children 0-8 years	Number	Percent
Children 0-8 years who have lost one parent	765	2.6
Children 0-8 years who have lost both parents	46	0.2
Children 0-8 years who have lost at least a parent (total number of orphans)	811	2.8
Children 0-8 years who have both parents	28,463	97.2
5.2: All children (0-17 years)	Number	Percent
Children 0-17 years who have lost one parent	2,838	5.6
Children 0-17 years who have lost both parents	320	0.6
Children 0-17 years who have lost at least a parent (total number of orphans)	3,158	6.3
Children 0-17 years who have both parents	47,276	93.7

6: DISABILITY

6.1: Persons with a disability	Number	Percent
Persons aged 2 years and above with a disability	6,918	7.5
Persons aged 2 years and above with a seeing disability	4,067	4.4
Persons aged 2 years and above with a hearing disability	1,357	1.5
Persons aged 2 years and above with a walking disability	1,967	2.1
Persons aged 2 years and above with a remembering disability	2,393	2.6
Persons aged 2 years and above with multiple disabilities	1669	24.9
Children aged 2-17 years with a disability	1,409	3.3
Youth aged 18-30 years with a disability	1,433	5.2
Older persons aged 60 years and above with a disability	1,150	54.7

7: MARRIAGE AND CHILDBEARING

7.1: Marital status of the population	Number	Percent
Persons aged 10 years and above who are married	17,179	47.1
Persons aged 18 years and above who are married	16,605	63.0
Females aged 50 years and above who are widowed	834	33.3
Females aged 10-17 years who have ever been married	701	6.9
Females aged 10-19 years who have ever been married	1,730	13.4
7.2: Females who have had a birth	Number	Percent
Females aged 12-17 years who have given birth	817	10.7
Females aged 12-19 years who have given birth	1,816	17.5

8: WORKING STATUS

8.1: Working persons	Number	Percent
Persons aged 10-15 years who were working	3,794	26.9
Persons aged 10-17 years who were working	5,735	30.8
Persons aged 18-30 years who were working	20,689	75.4
Persons aged 16-64 years who were working	41,126	79.3
Persons aged 18 years and above who were working	39,999	82.2
Persons aged 60 years and above who were working	1,515	72.1
8.2: Youths Not working and not in school		
Youths (Persons aged 18-30 years) who were neither working nor in school	2,417	8.8

9: USE OF ICT

9.1: Mobile phone ownership (10 years and above)	Number	Percent
Persons aged 10 years and above that own at least one mobile phone	39,232	58.3
Males aged 10 years and above that own at least one mobile phone	19,404	62.9
Females aged 10 years and above that own at least one mobile phone	19,828	54.4
9.2: Mobile phone ownership (18-30 years)	Number	Percent
Persons aged 18-30 years and above that own at least one mobile phone	20,051	73.1
Males aged 18-30 years and above that own at least one mobile phone	9,135	77.7
Females aged 18-30 years and above that own at least one mobile phone	10,916	69.6
9.3: Internet Usage (10 years and above)	Number	Percent
Persons aged 10 years and above that use internet	9,670	14.4
Males aged 10 years and above that use internet	5,795	18.8
Females aged 10 years and above that use internet	3,875	10.6
9.4: Internet Usage (18-30 years)	Number	Percent
Persons aged 18-30 years that use internet	5,497	20.0
Males aged 18-30 years that use internet	3,103	26.4
Females aged 18-30 years that use internet	2,394	15.3

10: HOUSING CONDITIONS

10.1: Construction Materials For the Dwelling Units	Number	Percent
Households living in dwelling units constructed using permanent roof materials	25,054	98.3
Households living in dwelling units constructed using permanent wall materials	23,003	90.2
Households living in dwelling units constructed using permanent floor materials	18,178	71.3
10.2: Status of Dwelling Units	Number	Percent
Households living in semi-permanent dwelling units	7,371	28.9
Households living in temporary dwelling units	361	1.4

11: ACCESS TO COMMUNITY SERVICES

11.1: Access to a Primary school	Number	Percent
Households that are 5 km or more to the nearest primary school, <u>whether public or private</u>	961	3.8
Households that are 5 km or more to the nearest <u>public</u> primary school	1,978	7.8
11.2: Access to a Secondary school	Number	Percent
Households that are 5 km or more to the nearest secondary school, <u>whether public or private</u>	2,111	8.3
Households that are 5 km or more to the nearest <u>public</u> secondary school	7,611	29.9
11.3: Access to a Health Facility	Number	Percent
Households that are 5 km or more to the nearest health facility, <u>whether public or private</u>	1,342	5.3
Households that are 5 km or more to the nearest <u>public</u> health facility	2,699	10.6
11.4: Access to a Police post /Police station	Number	Percent
Households that are 5 km or more to the nearest Police Post/Police Station	2,384	9.4

12: HOUSEHOLD HEALTH AND HYGIENE

12.1:Ownership of Mosquito nets	Number	Percent
Households that own at least a mosquito net	23,884	93.7
Households that own at least a mosquito net that was received free (Government /NGO)	21,888	91.6
12.2: Source Of Water For Drinking	Number	Percent
Households that have access to piped water	21,523	84.4
Households that use a bore hole	346	1.4
12.3:Ownership of a Toilet facility	Number	Percent
Households without any toilet facility	185	0.7
12.4: Other environmental conditions	Number	Percent
Households that <u>properly</u> dispose off solid waste	19,537	76.6
Households which are not living in decent dwellings	23,656	92.78

13: HOUSEHOLD ASSETS

13.1: Owner occupied Dwellings	Number	Percent
Households that are owner occupied	9,480	37.2
Male headed households that are owner occupied	7,398	38.5
Female headed households that are owner occupied	2,082	33.1
13.2: Movable Assets	Number	Percent
Households that own a television	6,488	25.4
Households that own a computer	1,523	6.0
Households that own a bicycle	4,458	17.5
Households that own a radio	16,020	62.8

14: OTHER HOUSEHOLD CHARACTERISTICS

14.1: Main source of information	Number	Percent
Households whose main source of information is a radio	12,842	50.4
Households whose main source of information is a community announcer	495	1.9
Households whose main source of information is a telephone	4,401	17.3
14.2: Household Economy and Welfare	Number	Percent
Households that received remittances from abroad in the last 12 months	3,685	14.5
Households where any member possesses a bank account	11,777	46.2
Households that depend on subsistence farming as a main source of livelihood	6,915	27.1
Households with at least one member engaged in a non-agricultural household based enterprise	18,425	85.3
Households where (members aged 5 years and above) consume less than two meals in a day	1,785	7.0
14.3: Source of Energy for lighting	Number	Percent
Households that have access to electricity	10,961	43.0
Households that use tadooba for lighting	7,586	29.8

15: HOUSEHOLD BASED AGRICULTURAL ACTIVITIES

15.1: Household based Agricultural activities	Number	Percent
Households engaged in crop growing	12,592	49.4
Households engaged in maize growing	6,605	25.9
Households engaged in coffee growing	2,569	10.1
Households engaged in growing of beans	9,346	36.7
Households engaged in growing of millet	109	0.4
Households engaged in growing of sweet potatoes	995	3.9
Households engaged in growing of matooke	1,926	7.6
Households engaged livestock farming	8,298	32.5
Households engaged in either crop growing or livestock farming	14,653	57.5

BUKONJO COUNTY EAST CONSTITUENCY

LIST OF TABLES

1	Population
2	Education
3	Illiteracy status
4	Ownership of a Birth Certificate
5	Parental Survival and Orphanhood
6	Disability
7	Marriage and Child Bearing
8	WORKING STATUS
9	Use of ICT
10	Housing Conditions
11	Access to Community Services
12	Household Health and Hygiene
13	Household Assets
14	Other Household Characteristics
15	Household Based Agricultural Activities

1: POPULATION

1.1: Population Size	Number	Percent
Total population	165,067	
Total male population	79,839	48.4
Total female population	85,228	51.6
Sex ratio (males per 100 females)	93.7	
1.2: Households	Number	Percent
Total households	30,986	
Households headed by males	25,471	82.2
Households headed by females	5,515	17.8
Households headed by children (aged 10-17 years)	74	0.2
Households headed by youth (aged 18-30 years)	7,074	22.8
Households headed by older persons (aged 60 years and above)	5,237	16.9
1.3: Population by Age groups	Number	Percent
Population aged 0-17 years	93,631	57.1
Population aged 18-30 years	33,712	20.6
Population aged 31-59 years	29,854	18.2
Population aged 60 years and over	6,807	4.2
1.4: Population by Special Age groups	Number	Percent
Population aged Less than one Year	5,871	3.6
Population aged 0-4 Years	30,924	18.9
Population aged 0-8 Years	53,792	32.8
Population aged 2-8 Years	42,315	25.8
Population aged 2-17 Years	82,154	50.1
Population aged 6-12 Years	36,479	22.2
Population aged 6-15 Years	49,587	30.2
Population aged 10-15 Years	27,956	17
Population aged 10-17 Years	35,070	21.4
Population aged 15-24 Years	31,227	19
Population aged 16-64 Years	73,130	44.6
Population aged 15-29 Years	41,593	25.4
Population aged 2 Years and Over	152,527	93
Population aged 10 Years and Over	105,443	64.3
Population aged 15 Years and Over	81,142	49.5
Population aged 18 Years and Over	70,373	42.9
Population aged 20 Years and Over	63,538	38.7
Population aged 65 Years and over	4,357	2.7

2: EDUCATION

2.1: Non School attendance of	Number	Percent
Persons aged 6-15 years not attending school	5,528	11.1
Males aged 6-15 years not attending school	2,944	11.7
Females aged 6-15 years not attending school	2,584	10.6
2.2: Persons attending Primary school	Number	Percent
Persons aged 6-12 years attending primary school	30,957	84.9
Males aged 6-12 years attending primary school	15,536	84.0
Females aged 6-12 years attending primary school	15,421	85.8
2.3: Persons attending Secondary school	Number	Percent
Persons aged 13-18 years attending secondary school	6,893	28.5
Males aged 13-18 years attending secondary school	3,558	29.1
Females aged 13-18 years attending secondary school	3,335	27.8
2.4: Persons not in School and Highest Level Completed is below S.4	Number	Percent
Persons aged 15 years and above whose highest level of education completed is below S.4	46,108	86.5
Males aged 15 years and above whose highest level of education completed is below S.4	21,110	83.1
Females aged 15 years and above whose highest level of education completed is below S.4	24,998	89.6
2.5: Persons not in School and Highest Level Completed is "O" Level	Number	Percent
Persons aged 18 years and above whose highest level of education completed is "O" level (S.4)	3,635	5.2
Males aged 18 years and above whose highest level of education completed is "O" level (S.4)	1,962	6.2
Females aged 18 years and above whose highest level of education completed is "O" level (S.4)	1,673	4.3
2.6: Persons not in School and Highest Level Completed is "A" Level	Number	Percent
Persons aged 20 years and above whose highest level of education completed is "A" level (S.6)	547	0.9
Males aged 20 years and above whose highest level of education completed is "A" level (S.6)	450	1.6
Females aged 20 years and above whose highest level of education completed is "A" level (S.6)	97	0.3

3: ILLITERACY STATUS

3.1: Persons aged 18 years and above	Number	Percent
Persons aged 18 years and above who are illiterate	25,075	35.6
Males aged 18 years and above who are illiterate	8,001	25.4
Females aged 18 years and above who are illiterate	17,074	43.9
3.2: Other age groups	Number	Percent
Persons aged 10-17 years who are illiterate	9,219	26.3
Persons aged 18-30 years who are illiterate	7,206	21.4
Persons aged 60 years and above who are illiterate	4,955	72.8

4: OWNERSHIP OF A BIRTH CERTIFICATE

4.1: Children with Birth Certificates	Number	Percent
Children less than 1 year who have a Birth Certificate	1,182	20.1
Children less than 5 years who have a Birth Certificate	8,293	26.8
Children 0-8 years who have a Birth Certificate	16,769	31.2
Children 0-17 years who have a Birth Certificate	29,959	33.2

5: PARENTAL SURVIVAL AND ORPHANHOOD

5.1: Children 0-8 years	Number	Percent
Children 0-8 years who have lost one parent	976	1.8
Children 0-8 years who have lost both parents	31	0.1
Children 0-8 years who have lost at least a parent (total number of orphans)	1,007	1.9
Children 0-8 years who have both parents	52,785	98.1
5.2: All children (0-17 years)	Number	Percent
Children 0-17 years who have lost one parent	3,533	3.8
Children 0-17 years who have lost both parents	184	0.2
Children 0-17 years who have lost at least a parent (total number of orphans)	3,717	4.0
Children 0-17 years who have both parents	89,914	96.0

6: DISABILITY

6.1: Persons with a disability	Number	Percent
Persons aged 2 years and above with a disability	13,204	8.7
Persons aged 2 years and above with a seeing disability	6,988	4.6
Persons aged 2 years and above with a hearing disability	3,388	2.2
Persons aged 2 years and above with a walking disability	4,246	2.8
Persons aged 2 years and above with a remembering disability	6,467	4.2
Persons aged 2 years and above with multiple disabilities	4270	33.7
Children aged 2-17 years with a disability	3,059	3.7
Youth aged 18-30 years with a disability	1,560	4.6
Older persons aged 60 years and above with a disability	3,778	55.5

7: MARRIAGE AND CHILDBEARING

7.1: Marital status of the population	Number	Percent
Persons aged 10 years and above who are married	28,234	50.3
Persons aged 18 years and above who are married	27,334	70.3
Females aged 50 years and above who are widowed	2,125	28.7
Females aged 10-17 years who have ever been married	1,077	6.2
Females aged 10-19 years who have ever been married	2,698	12.9
7.2: Females who have had a birth	Number	Percent
Females aged 12-17 years who have given birth	1,049	8.3
Females aged 12-19 years who have given birth	2,590	16.0

8: WORKING STATUS

8.1: Working persons	Number	Percent
Persons aged 10-15 years who were working	16,951	60.6
Persons aged 10-17 years who were working	22,026	62.8
Persons aged 18-30 years who were working	28,788	85.4
Persons aged 16-64 years who were working	63,510	86.8
Persons aged 18 years and above who were working	61,620	87.6
Persons aged 60 years and above who were working	5,354	78.7
8.2: Youths Not working and not in school		
Youths (Persons aged 18-30 years) who were neither working nor in school	2,329	6.9

9: USE OF ICT

9.1: Mobile phone ownership (10 years and above)	Number	Percent
Persons aged 10 years and above that own at least one mobile phone	35,318	33.5
Males aged 10 years and above that own at least one mobile phone	20,006	40.6
Females aged 10 years and above that own at least one mobile phone	15,312	27.3
9.2: Mobile phone ownership (18-30 years)	Number	Percent
Persons aged 18-30 years and above that own at least one mobile phone	15,858	47.0
Males aged 18-30 years and above that own at least one mobile phone	8,587	57.1
Females aged 18-30 years and above that own at least one mobile phone	7,271	38.9
9.3: Internet Usage (10 years and above)	Number	Percent
Persons aged 10 years and above that use internet	4,371	4.1
Males aged 10 years and above that use internet	2,926	5.9
Females aged 10 years and above that use internet	1,445	2.6
9.4: Internet Usage (18-30 years)	Number	Percent
Persons aged 18-30 years that use internet	2,301	6.8
Males aged 18-30 years that use internet	1,464	9.7
Females aged 18-30 years that use internet	837	4.5

10: HOUSING CONDITIONS

10.1: Construction Materials For the Dwelling Units	Number	Percent
Households living in dwelling units constructed using permanent roof materials	28,486	91.9
Households living in dwelling units constructed using permanent wall materials	15,020	48.5
Households living in dwelling units constructed using permanent floor materials	4,643	15.0
10.2: Status of Dwelling Units	Number	Percent
Households living in semi-permanent dwelling units	24,586	79.3
Households living in temporary dwelling units	2,357	7.6

11: ACCESS TO COMMUNITY SERVICES

11.1: Access to a Primary school	Number	Percent
Households that are 5 km or more to the nearest primary school, <u>whether public or private</u>	3,910	12.6
Households that are 5 km or more to the nearest <u>public</u> primary school	5,321	17.2
11.2: Access to a Secondary school	Number	Percent
Households that are 5 km or more to the nearest secondary school, <u>whether public or private</u>	8,613	27.8
Households that are 5 km or more to the nearest <u>public</u> secondary school	13,090	42.2
11.3: Access to a Health Facility	Number	Percent
Households that are 5 km or more to the nearest health facility, <u>whether public or private</u>	10,058	32.5
Households that are 5 km or more to the nearest <u>public</u> health facility	13,651	44.1
11.4: Access to a Police post /Police station	Number	Percent
Households that are 5 km or more to the nearest Police Post/Police Station	9,128	29.5

12: HOUSEHOLD HEALTH AND HYGIENE

12.1:Ownership of Mosquito nets	Number	Percent
Households that own at least a mosquito net	29,883	96.4
Households that own at least a mosquito net that was received free (Government /NGO)	29,619	99.1
12.2: Source Of Water For Drinking	Number	Percent
Households that have access to piped water	12,027	38.8
Households that use a bore hole	1,884	6.1
12.3:Ownership of a Toilet facility	Number	Percent
Households without any toilet facility	678	2.2
12.4: Other environmental conditions	Number	Percent
Households that <u>properly</u> dispose off solid waste	8,621	27.8
Households which are not living in decent dwellings	30,575	98.7

13: HOUSEHOLD ASSETS

13.1: Owner occupied Dwellings	Number	Percent
Households that are owner occupied	26,452	85.4
Male headed households that are owner occupied	22,220	87.2
Female headed households that are owner occupied	4,232	76.7
13.2: Movable Assets	Number	Percent
Households that own a television	721	2.3
Households that own a computer	342	1.1
Households that own a bicycle	5,186	16.7
Households that own a radio	20,780	67.1

14: OTHER HOUSEHOLD CHARACTERISTICS

14.1: Main source of information	Number	Percent
Households whose main source of information is a radio	20,542	66.3
Households whose main source of information is a community announcer	326	1.1
Households whose main source of information is a telephone	2,029	6.5
14.2: Household Economy and Welfare	Number	Percent
Households that received remittances from abroad in the last 12 months	2,542	8.2
Households where any member possesses a bank account	6,395	20.6
Households that depend on subsistence farming as a main source of livelihood	27,096	87.4
Households with at least one member engaged in a non-agricultural household based enterprise	18,185	86.6
Households where (members aged 5 years and above) consume less than two meals in a day	1,578	5.1
14.3: Source of Energy for lighting	Number	Percent
Households that have access to electricity	2,827	9.1
Households that use tadooba for lighting	24,973	80.6

15: HOUSEHOLD BASED AGRICULTURAL ACTIVITIES

15.1: Household based Agricultural activities	Number	Percent
Households engaged in crop growing	29,016	93.6
Households engaged in maize growing	9,592	31.0
Households engaged in coffee growing	13,974	45.1
Households engaged in growing of beans	24,763	79.9
Households engaged in growing of millet	216	0.7
Households engaged in growing of sweet potatoes	3,435	11.1
Households engaged in growing of matooke	6,656	21.5
Households engaged livestock farming	23,167	74.8
Households engaged in either crop growing or livestock farming	29,767	96.1

BUKONJO COUNTY WEST CONSTITUENCY

LIST OF TABLES

1	Population
2	Education
3	Illiteracy status
4	Ownership of a Birth Certificate
5	Parental Survival and Orphanhood
6	Disability
7	Marriage and Child Bearing
8	WORKING STATUS
9	Use of ICT
10	Housing Conditions
11	Access to Community Services
12	Household Health and Hygiene
13	Household Assets
14	Other Household Characteristics
15	Household Based Agricultural Activities

POPULATION

1.1: Population Size	Number	Percent
Total population	163,526	
Total male population	78,425	48
Total female population	85,101	52
Sex ratio (males per 100 females)	92.2	
1.2: Households	Number	Percent
Total households	30,162	
Households headed by males	23,839	79
Households headed by females	6,323	21
Households headed by children (aged 10-17 years)	88	0.3
Households headed by youth (aged 18-30 years)	7,490	24.8
Households headed by older persons (aged 60 years and above)	4,880	16.2
1.3: Population by Age groups	Number	Percent
Population aged 0-17 years	90,659	55.8
Population aged 18-30 years	36,232	22.3
Population aged 31-59 years	28,705	17.7
Population aged 60 years and over	6,859	4.2
1.4: Population by Special Age groups	Number	Percent
Population aged Less than one Year	5,734	3.5
Population aged 0-4 Years	29,778	18.3
Population aged 0-8 Years	51,147	31.5
Population aged 2-8 Years	39,515	24.3
Population aged 2-17 Years	79,027	48.6
Population aged 6-12 Years	34,434	21.2
Population aged 6-15 Years	47,420	29.2
Population aged 10-15 Years	27,030	16.6
Population aged 10-17 Years	34,987	21.5
Population aged 15-24 Years	33,884	20.9
Population aged 16-64 Years	75,331	46.4
Population aged 15-29 Years	45,034	27.7
Population aged 2 Years and Over	150,823	92.8
Population aged 10 Years and Over	106,783	65.7
Population aged 15 Years and Over	83,506	51.4
Population aged 18 Years and Over	71,796	44.2
Population aged 20 Years and Over	64,100	39.5
Population aged 65 Years and over	4,422	2.7

2: EDUCATION

2.1: Non School attendance of	Number	Percent
Persons aged 6-15 years not attending school	6,223	13.1
Males aged 6-15 years not attending school	3,205	13.5
Females aged 6-15 years not attending school	3,018	12.8
2.2: Persons attending Primary school	Number	Percent
Persons aged 6-12 years attending primary school	29,028	84.3
Males aged 6-12 years attending primary school	14,533	83.7
Females aged 6-12 years attending primary school	14,495	84.9
2.3: Persons attending Secondary school	Number	Percent
Persons aged 13-18 years attending secondary school	7,179	28.2
Males aged 13-18 years attending secondary school	3,624	29.2
Females aged 13-18 years attending secondary school	3,555	27.3
2.4: Persons not in School and Highest Level Completed is below S.4	Number	Percent
Persons aged 15 years and above whose highest level of education completed is below S.4	45,489	85.0
Males aged 15 years and above whose highest level of education completed is below S.4	20,954	81.8
Females aged 15 years and above whose highest level of education completed is below S.4	24,535	87.8
2.5: Persons not in School and Highest Level Completed is "O" Level	Number	Percent
Persons aged 18 years and above whose highest level of education completed is "O" level (S.4)	3,915	5.5
Males aged 18 years and above whose highest level of education completed is "O" level (S.4)	2,115	6.6
Females aged 18 years and above whose highest level of education completed is "O" level (S.4)	1,800	4.5
2.6: Persons not in School and Highest Level Completed is "A" Level	Number	Percent
Persons aged 20 years and above whose highest level of education completed is "A" level (S.6)	727	1.1
Males aged 20 years and above whose highest level of education completed is "A" level (S.6)	533	1.9
Females aged 20 years and above whose highest level of education completed is "A" level (S.6)	194	0.5

3: ILLITERACY STATUS

3.1: Persons aged 18 years and above	Number	Percent
Persons aged 18 years and above who are illiterate	25,470	35.5
Males aged 18 years and above who are illiterate	8,161	25.6
Females aged 18 years and above who are illiterate	17,309	43.4
3.2: Other age groups	Number	Percent
Persons aged 10-17 years who are illiterate	8,932	25.5
Persons aged 18-30 years who are illiterate	8,249	22.8
Persons aged 60 years and above who are illiterate	5,008	73.0

4: OWNERSHIP OF A BIRTH CERTIFICATE

4.1: Children with Birth Certificates	Number	Percent
Children less than 1 year who have a Birth Certificate	1,788	31.2
Children less than 5 years who have a Birth Certificate	10,651	35.8
Children 0-8 years who have a Birth Certificate	19,218	37.6
Children 0-17 years who have a Birth Certificate	33,579	38.7

5: PARENTAL SURVIVAL AND ORPHANHOOD

5.1: Children 0-8 years	Number	Percent
Children 0-8 years who have lost one parent	1,131	2.2
Children 0-8 years who have lost both parents	47	0.1
Children 0-8 years who have lost at least a parent (total number of orphans)	1,178	2.3
Children 0-8 years who have both parents	49,969	97.7
5.2: All children (0-17 years)	Number	Percent
Children 0-17 years who have lost one parent	4,107	4.5
Children 0-17 years who have lost both parents	270	0.3
Children 0-17 years who have lost at least a parent (total number of orphans)	4,377	4.8
Children 0-17 years who have both parents	86,282	95.2

6: DISABILITY

6.1: Persons with a disability	Number	Percent
Persons aged 2 years and above with a disability	15,667	10.4
Persons aged 2 years and above with a seeing disability	7,551	5.0
Persons aged 2 years and above with a hearing disability	3,888	2.6
Persons aged 2 years and above with a walking disability	5,155	3.4
Persons aged 2 years and above with a remembering disability	8,115	5.4
Persons aged 2 years and above with multiple disabilities	4879	32.5
Children aged 2-17 years with a disability	3,797	4.8
Youth aged 18-30 years with a disability	2,263	6.2
Older persons aged 60 years and above with a disability	4,057	59.1

7: MARRIAGE AND CHILDBEARING

7.1: Marital status of the population	Number	Percent
Persons aged 10 years and above who are married	26,600	46.2
Persons aged 18 years and above who are married	25,681	64.3
Females aged 50 years and above who are widowed	2,270	30.6
Females aged 10-17 years who have ever been married	1,216	6.9
Females aged 10-19 years who have ever been married	2,951	13.5
7.2: Females who have had a birth	Number	Percent
Females aged 12-17 years who have given birth	1,185	9.0
Females aged 12-19 years who have given birth	2,850	16.5

8: WORKING STATUS

8.1: Working persons	Number	Percent
Persons aged 10-15 years who were working	13,122	48.5
Persons aged 10-17 years who were working	17,812	50.9
Persons aged 18-30 years who were working	28,166	77.7
Persons aged 16-64 years who were working	59,716	79.3
Persons aged 18 years and above who were working	57,789	80.5
Persons aged 60 years and above who were working	4,734	69.0
8.2: Youths Not working and not in school		
Youths (Persons aged 18-30 years) who were neither working nor in school	4,144	11.4

9: USE OF ICT

9.1: Mobile phone ownership (10 years and above)	Number	Percent
Persons aged 10 years and above that own at least one mobile phone	38,989	36.5
Males aged 10 years and above that own at least one mobile phone	21,256	43.2
Females aged 10 years and above that own at least one mobile phone	17,733	30.8
9.2: Mobile phone ownership (18-30 years)	Number	Percent
Persons aged 18-30 years and above that own at least one mobile phone	18,840	52.0
Males aged 18-30 years and above that own at least one mobile phone	9,945	61.3
Females aged 18-30 years and above that own at least one mobile phone	8,895	44.4
9.3: Internet Usage (10 years and above)	Number	Percent
Persons aged 10 years and above that use internet	5,031	4.7
Males aged 10 years and above that use internet	3,389	6.9
Females aged 10 years and above that use internet	1,642	2.8
9.4: Internet Usage (18-30 years)	Number	Percent
Persons aged 18-30 years that use internet	3,170	8.7
Males aged 18-30 years that use internet	2,087	12.9
Females aged 18-30 years that use internet	1,083	5.4

10: HOUSING CONDITIONS

10.1: Construction Materials For the Dwelling Units	Number	Percent
Households living in dwelling units constructed using permanent roof materials	28,758	95.3
Households living in dwelling units constructed using permanent wall materials	13,916	46.1
Households living in dwelling units constructed using permanent floor materials	5,895	19.5
10.2: Status of Dwelling Units	Number	Percent
Households living in semi-permanent dwelling units	23,373	77.5
Households living in temporary dwelling units	1,360	4.5

11: ACCESS TO COMMUNITY SERVICES

11.1: Access to a Primary school	Number	Percent
Households that are 5 km or more to the nearest primary school, <u>whether public or private</u>	482	1.6
Households that are 5 km or more to the nearest <u>public</u> primary school	1,029	3.4
11.2: Access to a Secondary school	Number	Percent
Households that are 5 km or more to the nearest secondary school, <u>whether public or private</u>	3,207	10.6
Households that are 5 km or more to the nearest <u>public</u> secondary school	6,431	21.3
11.3: Access to a Health Facility	Number	Percent
Households that are 5 km or more to the nearest health facility, <u>whether public or private</u>	1,212	4.0
Households that are 5 km or more to the nearest <u>public</u> health facility	3,401	11.3
11.4: Access to a Police post /Police station	Number	Percent
Households that are 5 km or more to the nearest Police Post/Police Station	3,076	10.2

12: HOUSEHOLD HEALTH AND HYGIENE

12.1:Ownership of Mosquito nets	Number	Percent
Households that own at least a mosquito net	29,018	96.2
Households that own at least a mosquito net that was received free (Government /NGO)	28,462	98.1
12.2: Source Of Water For Drinking	Number	Percent
Households that have access to piped water	16,628	55.1
Households that use a bore hole	796	2.6
12.3:Ownership of a Toilet facility	Number	Percent
Households without any toilet facility	675	2.2
12.4: Other environmental conditions	Number	Percent
Households that <u>properly</u> dispose off solid waste	9,601	31.8
Households which are not living in decent dwellings	29,490	97.8

13: HOUSEHOLD ASSETS

13.1: Owner occupied Dwellings	Number	Percent
Households that are owner occupied	24,297	80.6
Male headed households that are owner occupied	19,526	81.9
Female headed households that are owner occupied	4,771	75.5
13.2: Movable Assets	Number	Percent
Households that own a television	1,784	5.9
Households that own a computer	466	1.5
Households that own a bicycle	6,284	20.8
Households that own a radio	19,539	64.8

14: OTHER HOUSEHOLD CHARACTERISTICS

14.1: Main source of information	Number	Percent
Households whose main source of information is a radio	19,262	63.9
Households whose main source of information is a community announcer	598	2.0
Households whose main source of information is a telephone	1,689	5.6
14.2: Household Economy and Welfare	Number	Percent
Households that received remittances from abroad in the last 12 months	2,640	8.8
Households where any member possesses a bank account	6,512	21.6
Households that depend on subsistence farming as a main source of livelihood	23,313	77.3
Households with at least one member engaged in a non-agricultural household based enterprise	17,414	82.8
Households where (members aged 5 years and above) consume less than two meals in a day	1,847	6.1
14.3: Source of Energy for lighting	Number	Percent
Households that have access to electricity	4,641	15.4
Households that use tadooba for lighting	21,251	70.5

15: HOUSEHOLD BASED AGRICULTURAL ACTIVITIES

15.1: Household based Agricultural activities	Number	Percent
Households engaged in crop growing	26,861	89.1
Households engaged in maize growing	9,156	30.4
Households engaged in coffee growing	3,859	12.8
Households engaged in growing of beans	25,290	83.8
Households engaged in growing of millet	245	0.8
Households engaged in growing of sweet potatoes	3,679	12.2
Households engaged in growing of matooke	3,753	12.4
Households engaged livestock farming	18,917	62.7
Households engaged in either crop growing or livestock farming	27,638	91.6

BUSONGORA COUNTY NORTH CONSTITUENCY

LIST OF TABLES

1	Population
2	Education
3	Illiteracy status
4	Ownership of a Birth Certificate
5	Parental Survival and Orphanhood
6	Disability
7	Marriage and Child Bearing
8	WORKING STATUS
9	Use of ICT
10	Housing Conditions
11	Access to Community Services
12	Household Health and Hygiene
13	Household Assets
14	Other Household Characteristics
15	Household Based Agricultural Activities

POPULATION

1.1: Population Size	Number	Percent
Total population	180,810	
Total male population	89,345	49.4
Total female population	91,465	50.6
Sex ratio (males per 100 females)	97.7	
1.2: Households	Number	Percent
Total households	34,810	
Households headed by males	28,463	81.8
Households headed by females	6,347	18.2
Households headed by children (aged 10-17 years)	148	0.4
Households headed by youth (aged 18-30 years)	9,854	28.3
Households headed by older persons (aged 60 years and above)	5,294	15.2
1.3: Population by Age groups	Number	Percent
Population aged 0-17 years	104,034	58.1
Population aged 18-30 years	38,767	21.6
Population aged 31-59 years	30,020	16.8
Population aged 60 years and over	6,318	3.5
1.4: Population by Special Age groups	Number	Percent
Population aged Less than one Year	6,796	3.8
Population aged 0-4 Years	35,325	19.7
Population aged 0-8 Years	61,112	34.1
Population aged 2-8 Years	48,045	26.8
Population aged 2-17 Years	90,967	50.8
Population aged 6-12 Years	40,385	22.5
Population aged 6-15 Years	54,039	30.2
Population aged 10-15 Years	29,458	16.4
Population aged 10-17 Years	37,470	20.9
Population aged 15-24 Years	35,482	19.8
Population aged 16-64 Years	79,016	44.1
Population aged 15-29 Years	47,085	26.3
Population aged 2 Years and Over	166,072	92.7
Population aged 10 Years and Over	112,575	62.8
Population aged 15 Years and Over	86,757	48.4
Population aged 18 Years and Over	75,105	41.9
Population aged 20 Years and Over	67,113	37.5
Population aged 65 Years and over	4,101	2.3

2: EDUCATION

2.1: Non School attendance of	Number	Percent
Persons aged 6-15 years not attending school	5,562	10.3
Males aged 6-15 years not attending school	2,950	10.7
Females aged 6-15 years not attending school	2,612	9.9
2.2: Persons attending Primary school	Number	Percent
Persons aged 6-12 years attending primary school	33,939	84.0
Males aged 6-12 years attending primary school	17,173	83.3
Females aged 6-12 years attending primary school	16,766	84.8
2.3: Persons attending Secondary school	Number	Percent
Persons aged 13-18 years attending secondary school	7,400	28.1
Males aged 13-18 years attending secondary school	3,967	29.8
Females aged 13-18 years attending secondary school	3,433	26.3
2.4: Persons not in School and Highest Level Completed is below S.4	Number	Percent
Persons aged 15 years and above whose highest level of education completed is below S.4	50,073	85.7
Males aged 15 years and above whose highest level of education completed is below S.4	22,596	80.8
Females aged 15 years and above whose highest level of education completed is below S.4	27,477	90.1
2.5: Persons not in School and Highest Level Completed is "O" Level	Number	Percent
Persons aged 18 years and above whose highest level of education completed is "O" level (S.4)	4,721	6.3
Males aged 18 years and above whose highest level of education completed is "O" level (S.4)	2,869	8.3
Females aged 18 years and above whose highest level of education completed is "O" level (S.4)	1,852	4.6
2.6: Persons not in School and Highest Level Completed is "A" Level	Number	Percent
Persons aged 20 years and above whose highest level of education completed is "A" level (S.6)	792	1.2
Males aged 20 years and above whose highest level of education completed is "A" level (S.6)	637	2.1
Females aged 20 years and above whose highest level of education completed is "A" level (S.6)	155	0.4

3: ILLITERACY STATUS

3.1: Persons aged 18 years and above	Number	Percent
Persons aged 18 years and above who are illiterate	24,225	32.3
Males aged 18 years and above who are illiterate	7,908	22.9
Females aged 18 years and above who are illiterate	16,317	40.1
3.2: Other age groups	Number	Percent
Persons aged 10-17 years who are illiterate	10,018	26.7
Persons aged 18-30 years who are illiterate	7,908	20.4
Persons aged 60 years and above who are illiterate	4,464	70.7

4: OWNERSHIP OF A BIRTH CERTIFICATE

4.1: Children with Birth Certificates	Number	Percent
Children less than 1 year who have a Birth Certificate	2,589	38.1
Children less than 5 years who have a Birth Certificate	16,262	46.0
Children 0-8 years who have a Birth Certificate	29,711	48.6
Children 0-17 years who have a Birth Certificate	48,789	48.7

5: PARENTAL SURVIVAL AND ORPHANHOOD

5.1: Children 0-8 years	Number	Percent
Children 0-8 years who have lost one parent	1,386	2.3
Children 0-8 years who have lost both parents	60	0.1
Children 0-8 years who have lost at least a parent (total number of orphans)	1,446	2.4
Children 0-8 years who have both parents	59,666	97.6
5.2: All children (0-17 years)	Number	Percent
Children 0-17 years who have lost one parent	4,719	4.5
Children 0-17 years who have lost both parents	362	0.3
Children 0-17 years who have lost at least a parent (total number of orphans)	5,081	4.9
Children 0-17 years who have both parents	98,953	95.1

6: DISABILITY

6.1: Persons with a disability	Number	Percent
Persons aged 2 years and above with a disability	16,617	10.0
Persons aged 2 years and above with a seeing disability	8,922	5.4
Persons aged 2 years and above with a hearing disability	4,062	2.4
Persons aged 2 years and above with a walking disability	5,437	3.3
Persons aged 2 years and above with a remembering disability	7,950	4.8
Persons aged 2 years and above with multiple disabilities	5149	32.5
Children aged 2-17 years with a disability	3,642	4.0
Youth aged 18-30 years with a disability	2,428	6.3
Older persons aged 60 years and above with a disability	3,888	61.5

7: MARRIAGE AND CHILDBEARING

7.1: Marital status of the population	Number	Percent
Persons aged 10 years and above who are married	14,563	52.4
Persons aged 18 years and above who are married	14,050	71.3
Females aged 50 years and above who are widowed	1,143	33.6
Females aged 10-17 years who have ever been married	608	7.5
Females aged 10-19 years who have ever been married	1,603	16.2
7.2: Females who have had a birth	Number	Percent
Females aged 12-17 years who have given birth	504	8.6
Females aged 12-19 years who have given birth	1,401	18.3

8: WORKING STATUS

8.1: Working persons	Number	Percent
Persons aged 10-15 years who were working	8,503	63.7
Persons aged 10-17 years who were working	10,940	65.5
Persons aged 18-30 years who were working	16,585	89.2
Persons aged 16-64 years who were working	34,940	90.8
Persons aged 18 years and above who were working	34,121	91.9
Persons aged 60 years and above who were working	2,689	86.2
8.2: Youths Not working and not in school		
Youths (Persons aged 18-30 years) who were neither working nor in school	1,032	5.6

9: USE OF ICT

9.1: Mobile phone ownership (10 years and above)	Number	Percent
Persons aged 10 years and above that own at least one mobile phone	37,484	33.3
Males aged 10 years and above that own at least one mobile phone	21,578	40.3
Females aged 10 years and above that own at least one mobile phone	15,906	27.0
9.2: Mobile phone ownership (18-30 years)	Number	Percent
Persons aged 18-30 years and above that own at least one mobile phone	17,858	46.1
Males aged 18-30 years and above that own at least one mobile phone	9,847	56.4
Females aged 18-30 years and above that own at least one mobile phone	8,011	37.6
9.3: Internet Usage (10 years and above)	Number	Percent
Persons aged 10 years and above that use internet	4,494	4.0
Males aged 10 years and above that use internet	3,177	5.9
Females aged 10 years and above that use internet	1,317	2.2
9.4: Internet Usage (18-30 years)	Number	Percent
Persons aged 18-30 years that use internet	2,666	6.9
Males aged 18-30 years that use internet	1,814	10.4
Females aged 18-30 years that use internet	852	4.0

10: HOUSING CONDITIONS

10.1: Construction Materials For the Dwelling Units	Number	Percent
Households living in dwelling units constructed using permanent roof materials	32,399	93.1
Households living in dwelling units constructed using permanent wall materials	11,365	32.6
Households living in dwelling units constructed using permanent floor materials	6,040	17.4
10.2: Status of Dwelling Units	Number	Percent
Households living in semi-permanent dwelling units	27,124	77.9
Households living in temporary dwelling units	2,333	6.7

11: ACCESS TO COMMUNITY SERVICES

11.1: Access to a Primary school	Number	Percent
Households that are 5 km or more to the nearest primary school, <u>whether public or private</u>	4,709	13.5
Households that are 5 km or more to the nearest <u>public</u> primary school	6,372	18.3
11.2: Access to a Secondary school	Number	Percent
Households that are 5 km or more to the nearest secondary school, <u>whether public or private</u>	11,775	33.8
Households that are 5 km or more to the nearest <u>public</u> secondary school	21,093	60.6
11.3: Access to a Health Facility	Number	Percent
Households that are 5 km or more to the nearest health facility, <u>whether public or private</u>	8,344	24.0
Households that are 5 km or more to the nearest <u>public</u> health facility	11,533	33.1
11.4: Access to a Police post /Police station	Number	Percent
Households that are 5 km or more to the nearest Police Post/Police Station	11,544	33.2

12: HOUSEHOLD HEALTH AND HYGIENE

12.1:Ownership of Mosquito nets	Number	Percent
Households that own at least a mosquito net	33,353	95.8
Households that own at least a mosquito net that was received free (Government /NGO)	32,889	98.6
12.2: Source Of Water For Drinking	Number	Percent
Households that have access to piped water	14,410	41.4
Households that use a bore hole	2,793	8.0
12.3:Ownership of a Toilet facility	Number	Percent
Households without any toilet facility	710	2.0
12.4: Other environmental conditions	Number	Percent
Households that <u>properly</u> dispose off solid waste	9,723	27.9
Households which are not living in decent dwellings	34,272	98.5

13: HOUSEHOLD ASSETS

13.1: Owner occupied Dwellings	Number	Percent
Households that are owner occupied	28,160	80.9
Male headed households that are owner occupied	23,390	82.2
Female headed households that are owner occupied	4,770	75.2
13.2: Movable Assets	Number	Percent
Households that own a television	1,885	5.4
Households that own a computer	523	1.5
Households that own a bicycle	4,279	12.3
Households that own a radio	21,563	61.9

14: OTHER HOUSEHOLD CHARACTERISTICS

14.1: Main source of information	Number	Percent
Households whose main source of information is a radio	21,262	61.1
Households whose main source of information is a community announcer	881	2.5
Households whose main source of information is a telephone	2,277	6.5
14.2: Household Economy and Welfare	Number	Percent
Households that received remittances from abroad in the last 12 months	3,224	9.3
Households where any member possesses a bank account	7,954	22.8
Households that depend on subsistence farming as a main source of livelihood	28,461	81.8
Households with at least one member engaged in a non-agricultural household based enterprise	17,843	86.0
Households where (members aged 5 years and above) consume less than two meals in a day	1,710	4.9
14.3: Source of Energy for lighting	Number	Percent
Households that have access to electricity	4,073	11.7
Households that use tadooba for lighting	26,570	76.3

15: HOUSEHOLD BASED AGRICULTURAL ACTIVITIES

15.1: Household based Agricultural activities	Number	Percent
Households engaged in crop growing	29,016	93.6
Households engaged in maize growing	9,592	31.0
Households engaged in coffee growing	13,974	45.1
Households engaged in growing of beans	24,763	79.9
Households engaged in growing of millet	216	0.7
Households engaged in growing of sweet potatoes	3,435	11.1
Households engaged in growing of matooke	6,656	21.5
Households engaged livestock farming	23,167	74.8
Households engaged in either crop growing or livestock farming	29,767	96.1

BUSONGORA COUNTY SOUTH CONSTITUENCY

LIST OF TABLES

1	Population
2	Education
3	Illiteracy status
4	Ownership of a Birth Certificate
5	Parental Survival and Orphanhood
6	Disability
7	Marriage and Child Bearing
8	WORKING STATUS
9	Use of ICT
10	Housing Conditions
11	Access to Community Services
12	Household Health and Hygiene
13	Household Assets
14	Other Household Characteristics
15	Household Based Agricultural Activities

POPULATION

1.1: Population Size	Number	Percent
Total population	84,519	
Total male population	42,175	49.9
Total female population	42,344	50.1
Sex ratio (males per 100 females)	99.6	
1.2: Households	Number	Percent
Total households	17,951	
Households headed by males	14,442	80.5
Households headed by females	3,509	19.5
Households headed by children (aged 10-17 years)	75	0.4
Households headed by youth (aged 18-30 years)	5,061	28.2
Households headed by older persons (aged 60 years and above)	2,590	14.4
1.3: Population by Age groups	Number	Percent
Population aged 0-17 years	46,906	55.8
Population aged 18-30 years	18,584	22.1
Population aged 31-59 years	15,435	18.4
Population aged 60 years and over	3,120	3.7
1.4: Population by Special Age groups	Number	Percent
Population aged Less than one Year	3,248	3.9
Population aged 0-4 Years	16,554	19.7
Population aged 0-8 Years	27,812	33.1
Population aged 2-8 Years	21,419	25.5
Population aged 2-17 Years	40,513	48.2
Population aged 6-12 Years	17,971	21.4
Population aged 6-15 Years	24,111	28.7
Population aged 10-15 Years	13,350	15.9
Population aged 10-17 Years	16,690	19.9
Population aged 15-24 Years	16,022	19.1
Population aged 16-64 Years	38,497	45.8
Population aged 15-29 Years	21,992	26.2
Population aged 2 Years and Over	77,652	92.4
Population aged 10 Years and Over	53,829	64
Population aged 15 Years and Over	42,185	50.2
Population aged 18 Years and Over	37,139	44.2
Population aged 20 Years and Over	33,672	40.1
Population aged 65 Years and over	1,982	2.4

2: EDUCATION

2.1: Non School attendance of	Number	Percent
Persons aged 6-15 years not attending school	2,995	12.4
Males aged 6-15 years not attending school	1,669	13.4
Females aged 6-15 years not attending school	1,326	11.4
2.2: Persons attending Primary school	Number	Percent
Persons aged 6-12 years attending primary school	14,619	81.3
Males aged 6-12 years attending primary school	7,461	80.1
Females aged 6-12 years attending primary school	7,158	82.7
2.3: Persons attending Secondary school	Number	Percent
Persons aged 13-18 years attending secondary school	2,867	25.1
Males aged 13-18 years attending secondary school	1,566	26.9
Females aged 13-18 years attending secondary school	1,301	23.2
2.4: Persons not in School and Highest Level Completed is below S.4	Number	Percent
Persons aged 15 years and above whose highest level of education completed is below S.4	24,646	88.2
Males aged 15 years and above whose highest level of education completed is below S.4	11,802	85.0
Females aged 15 years and above whose highest level of education completed is below S.4	12,844	91.3
2.5: Persons not in School and Highest Level Completed is "O" Level	Number	Percent
Persons aged 18 years and above whose highest level of education completed is "O" level (S.4)	1,922	5.2
Males aged 18 years and above whose highest level of education completed is "O" level (S.4)	1,139	6.5
Females aged 18 years and above whose highest level of education completed is "O" level (S.4)	783	4.0
2.6: Persons not in School and Highest Level Completed is "A" Level	Number	Percent
Persons aged 20 years and above whose highest level of education completed is "A" level (S.6)	355	1.1
Males aged 20 years and above whose highest level of education completed is "A" level (S.6)	282	1.8
Females aged 20 years and above whose highest level of education completed is "A" level (S.6)	73	0.4

3: ILLITERACY STATUS

3.1: Persons aged 18 years and above	Number	Percent
Persons aged 18 years and above who are illiterate	13,909	37.5
Males aged 18 years and above who are illiterate	4,809	27.6
Females aged 18 years and above who are illiterate	9,100	46.2
3.2: Other age groups	Number	Percent
Persons aged 10-17 years who are illiterate	4,571	27.4
Persons aged 18-30 years who are illiterate	4,464	24.0
Persons aged 60 years and above who are illiterate	2,322	74.4

4: OWNERSHIP OF A BIRTH CERTIFICATE

4.1: Children with Birth Certificates	Number	Percent
Children less than 1 year who have a Birth Certificate	923	28.4
Children less than 5 years who have a Birth Certificate	5,680	34.3
Children 0-8 years who have a Birth Certificate	10,264	36.9
Children 0-17 years who have a Birth Certificate	16,787	37.0

5: PARENTAL SURVIVAL AND ORPHANHOOD

5.1: Children 0-8 years	Number	Percent
Children 0-8 years who have lost one parent	652	2.3
Children 0-8 years who have lost both parents	50	0.2
Children 0-8 years who have lost at least a parent (total number of orphans)	702	2.5
Children 0-8 years who have both parents	27,110	97.5
5.2: All children (0-17 years)	Number	Percent
Children 0-17 years who have lost one parent	2,192	4.7
Children 0-17 years who have lost both parents	224	0.5
Children 0-17 years who have lost at least a parent (total number of orphans)	2,416	5.2
Children 0-17 years who have both parents	44,490	94.8

6: DISABILITY

6.1: Persons with a disability	Number	Percent
Persons aged 2 years and above with a disability	6,625	8.5
Persons aged 2 years and above with a seeing disability	3,318	4.3
Persons aged 2 years and above with a hearing disability	1,743	2.2
Persons aged 2 years and above with a walking disability	2,072	2.7
Persons aged 2 years and above with a remembering disability	3,121	4.0
Persons aged 2 years and above with multiple disabilities	2039	32.0
Children aged 2-17 years with a disability	1,211	3.0
Youth aged 18-30 years with a disability	1,083	5.8
Older persons aged 60 years and above with a disability	1,610	51.6

7: MARRIAGE AND CHILDBEARING

7.1: Marital status of the population	Number	Percent
Persons aged 10 years and above who are married	14,563	52.4
Persons aged 18 years and above who are married	14,050	71.3
Females aged 50 years and above who are widowed	1,143	33.6
Females aged 10-17 years who have ever been married	608	7.5
Females aged 10-19 years who have ever been married	1,603	16.2
7.2: Females who have had a birth	Number	Percent
Females aged 12-17 years who have given birth	504	8.6
Females aged 12-19 years who have given birth	1,401	18.3

8: WORKING STATUS

8.1: Working persons	Number	Percent
Persons aged 10-15 years who were working	8,503	63.7
Persons aged 10-17 years who were working	10,940	65.5
Persons aged 18-30 years who were working	16,585	89.2
Persons aged 16-64 years who were working	34,940	90.8
Persons aged 18 years and above who were working	34,121	91.9
Persons aged 60 years and above who were working	2,689	86.2
8.2: Youths Not working and not in school		
Youths (Persons aged 18-30 years) who were neither working nor in school	1,032	5.6

9: USE OF ICT

9.1: Mobile phone ownership (10 years and above)	Number	Percent
Persons aged 10 years and above that own at least one mobile phone	17,883	33.2
Males aged 10 years and above that own at least one mobile phone	10,632	40.8
Females aged 10 years and above that own at least one mobile phone	7,251	26.1
9.2: Mobile phone ownership (18-30 years)	Number	Percent
Persons aged 18-30 years and above that own at least one mobile phone	8,368	45.0
Males aged 18-30 years and above that own at least one mobile phone	4,761	55.7
Females aged 18-30 years and above that own at least one mobile phone	3,607	35.9
9.3: Internet Usage (10 years and above)	Number	Percent
Persons aged 10 years and above that use internet	2,470	4.6
Males aged 10 years and above that use internet	1,609	6.2
Females aged 10 years and above that use internet	861	3.1
9.4: Internet Usage (18-30 years)	Number	Percent
Persons aged 18-30 years that use internet	1,458	7.8
Males aged 18-30 years that use internet	959	11.2
Females aged 18-30 years that use internet	499	5.0

10: HOUSING CONDITIONS

10.1: Construction Materials For the Dwelling Units	Number	Percent
Households living in dwelling units constructed using permanent roof materials	16,217	90.3
Households living in dwelling units constructed using permanent wall materials	6,691	37.3
Households living in dwelling units constructed using permanent floor materials	1,965	10.9
10.2: Status of Dwelling Units	Number	Percent
Households living in semi-permanent dwelling units	14,479	80.7
Households living in temporary dwelling units	1,679	9.4

11: ACCESS TO COMMUNITY SERVICES

11.1: Access to a Primary school	Number	Percent
Households that are 5 km or more to the nearest primary school, <u>whether public or private</u>	3,157	17.6
Households that are 5 km or more to the nearest <u>public</u> primary school	3,819	21.3
11.2: Access to a Secondary school	Number	Percent
Households that are 5 km or more to the nearest secondary school, <u>whether public or private</u>	8,656	48.2
Households that are 5 km or more to the nearest <u>public</u> secondary school	11,074	61.7
11.3: Access to a Health Facility	Number	Percent
Households that are 5 km or more to the nearest health facility, <u>whether public or private</u>	5,244	29.2
Households that are 5 km or more to the nearest <u>public</u> health facility	5,682	31.7
11.4: Access to a Police post /Police station	Number	Percent
Households that are 5 km or more to the nearest Police Post/Police Station	6,415	35.7

12: HOUSEHOLD HEALTH AND HYGIENE

12.1:Ownership of Mosquito nets	Number	Percent
Households that own at least a mosquito net	17,043	94.9
Households that own at least a mosquito net that was received free (Government /NGO)	16,791	98.5
12.2: Source Of Water For Drinking	Number	Percent
Households that have access to piped water	4,706	26.2
Households that use a bore hole	2,907	16.2
12.3:Ownership of a Toilet facility	Number	Percent
Households without any toilet facility	743	4.1
12.4: Other environmental conditions	Number	Percent
Households that <u>properly</u> dispose off solid waste	6,229	34.7
Households which are not living in decent dwellings	17,853	99.5

13: HOUSEHOLD ASSETS

13.1: Owner occupied Dwellings	Number	Percent
Households that are owner occupied	13,450	74.9
Male headed households that are owner occupied	10,975	76.0
Female headed households that are owner occupied	2,475	70.5
13.2: Movable Assets	Number	Percent
Households that own a television	597	3.3
Households that own a computer	144	0.8
Households that own a bicycle	2,521	14.0
Households that own a radio	11,375	63.4

14: OTHER HOUSEHOLD CHARACTERISTICS

14.1: Main source of information	Number	Percent
Households whose main source of information is a radio	11,624	64.8
Households whose main source of information is a community announcer	393	2.2
Households whose main source of information is a telephone	653	3.6
14.2: Household Economy and Welfare	Number	Percent
Households that received remittances from abroad in the last 12 months	1,208	6.7
Households where any member possesses a bank account	3,713	20.7
Households that depend on subsistence farming as a main source of livelihood	12,778	71.2
Households with at least one member engaged in a non-agricultural household based enterprise	11,006	87.2
Households where (members aged 5 years and above) consume less than two meals in a day	1,298	7.2
14.3: Source of Energy for lighting	Number	Percent
Households that have access to electricity	1,386	7.7
Households that use tadooba for lighting	13,262	73.9

15: HOUSEHOLD BASED AGRICULTURAL ACTIVITIES

15.1: Household based Agricultural activities	Number	Percent
Households engaged in crop growing	13,327	74.2
Households engaged in maize growing	5,804	32.3
Households engaged in coffee growing	6,120	34.1
Households engaged in growing of beans	10,169	56.6
Households engaged in growing of millet	139	0.8
Households engaged in growing of sweet potatoes	1,767	9.8
Households engaged in growing of matooke	1,786	9.9
Households engaged livestock farming	11,043	61.5
Households engaged in either crop growing or livestock farming	14,727	82.0

APPENDICES

Appendix 1: Population by Sex and Type of Residence by District, Uganda 2014

Central	Male	Female	Urban	Rural	Total
Kasese	207,324	215,447	299,628	123,143	422,771
Bukomansimbi	75,109	76,304	12,797	138,616	151,413
Butambala	50,082	50,758	15,553	85,287	100,840
Buvuma	48,414	41,476	9,935	79,955	89,890
Gomba	82,167	77,755	12,439	147,483	159,922
Kalangala	31,349	22,944	4,980	49,313	54,293
Kalungu	89,679	93,553	37,094	146,138	183,232
Kampala	712,762	794,318	1,507,080	0	1,507,080
Kayunga	180,706	187,356	27,061	341,001	368,062
Kiboga	75,847	72,371	33,520	114,698	148,218
Kyankwanzi	111,539	103,154	30,621	184,072	214,693
Luwero	226,805	230,153	95,749	361,209	456,958
Lwengo	133,474	141,479	42,919	232,034	274,953
Lyantonde	46,714	47,039	13,823	79,930	93,753
Masaka	145,552	151,452	103,227	193,777	297,004
Mityana	165,717	163,247	107,645	221,319	328,964
Mpigi	125,404	125,144	43,360	207,188	250,548
Mubende	346,654	337,694	113,803	570,545	684,348
Mukono	289,757	307,047	162,710	434,094	596,804
Nakaseke	104,795	92,578	39,397	157,976	197,373
Nakasongola	93,323	88,472	24,667	157,128	181,795
Rakai	254,366	261,943	34,041	482,268	516,309
Ssembabule	126,084	126,513	16,949	235,648	252,597
Wakiso	949,035	1,048,383	1,681,449	315,969	1,997,418

Eastern	Male	Female	Urban	Rural	Total
Amuria	132,521	138,407	17,385	253,543	270,928
Budaka	100,620	106,977	23,809	183,788	207,597
Bududa	105,820	104,353	13,753	196,420	210,173
Bugiri	185,925	196,988	64,223	318,690	382,913
Bukedea	98,684	104,916	10,927	192,673	203,600
Bukwo	45,058	44,298	12,094	77,262	89,356
Bulambuli	86,108	88,405	16,867	157,646	174,513
Busia	156,447	167,215	54,798	268,864	323,662
Butaleja	119,466	124,687	33,201	210,952	244,153
Buyende	158,615	164,452	23,201	299,866	323,067
Iganga	241,182	263,015	92,792	411,405	504,197
Jinja	230,189	241,053	172,714	298,528	471,242
Kaberamaido	106,042	108,984	4,032	210,994	215,026
Kaliro	115,969	120,230	16,753	219,446	236,199
Kamuli	236,389	249,930	58,984	427,335	486,319
Kapchorwa	51,658	53,528	44,211	60,975	105,186
Katakwi	81,673	84,558	9,280	156,951	166,231
Kibuku	97,476	104,557	17,436	184,597	202,033
Kumi	116,457	122,811	36,493	202,775	239,268

Kween	47,404	46,263	6,462	87,205	93,667
Luuka	113,566	124,454	10,264	227,756	238,020
Manafwa	173,580	180,245	53,837	299,988	353,825
Mayuge	229,252	243,987	33,756	439,483	473,239
Mbale	233,339	255,621	126,544	362,416	488,960
Namayingo	106,303	109,140	15,740	199,703	215,443
Namutumba	123,911	128,646	18,679	233,878	252,557
Ngora	68,414	73,505	15,148	126,771	141,919
Pallisa	188,125	198,765	37,937	348,953	386,890
Serere	139,493	146,410	12,158	273,745	285,903
Sironko	120,862	121,559	34,104	208,317	242,421
Soroti	144,976	151,857	49,685	247,148	296,833
Tororo	250,830	266,250	72,325	444,755	517,080

Northern	Male	Female	Urban	Rural	Total
Abim	52,456	55,510	17,168	90,798	107,966
Adjumani	108,298	116,953	41,064	184,187	225,251
Agago	110,495	117,297	29,153	198,639	227,792
Alebtong	110,989	116,552	6,702	220,839	227,541
Amolatar	73,014	74,152	21,479	125,687	147,166
Amudat	54,246	51,523	11,786	93,983	105,769
Amuru	91,284	95,412	9,302	177,394	186,696
Apac	180,995	187,631	75,300	293,326	368,626
Arua	374,755	407,322	61,962	720,115	782,077
Dokolo	89,476	93,617	20,135	162,958	183,093
Gulu	134,571	141,042	150,306	125,307	275,613
Kaabong	79,207	88,672	11,559	156,320	167,879
Kitgum	99,258	104,790	75,581	128,467	204,048
Koboko	102,250	104,245	57,902	148,593	206,495
Kole	117,164	122,163	8,860	230,467	239,327
Kotido	86,169	94,881	66,454	114,596	181,050
Lamwo	65,106	69,265	21,700	112,671	134,371
Lira	196,663	211,380	101,155	306,888	408,043
Maracha	87,900	98,234	9,291	176,843	186,134
Moroto	49,746	53,686	14,196	89,236	103,432
Moyo	68,940	70,072	10,579	128,433	139,012
Nakapiripirit	74,578	82,112	3,727	152,963	156,690
Napak	65,518	76,706	4,733	137,491	142,224
Nebbi	191,104	205,690	58,069	338,725	396,794
Nwoya	65,969	67,537	13,592	119,914	133,506
Omoro	78,837	81,895	18,952	141,780	160,732
Otuke	51,187	53,067	6,213	98,041	104,254
Oyam	187,121	196,523	18,399	365,245	383,644
Pader	86,635	91,369	13,382	164,622	178,004
Yumbe	230,626	254,196	34,806	450,016	484,822
Zombo	115,824	124,257	43,723	196,358	240,081

Western	Male	Female	Urban	Rural	Total
Buhweju	59,059	61,661	2,956	117,764	120,720
Buliisa	57,801	55,360	7,238	105,923	113,161
Bundibugyo	108,435	115,952	40,219	184,168	224,387
Bushenyi	114,207	120,236	56,070	178,373	234,443
Hoima	287,906	285,080	105,944	467,042	572,986
Ibanda	121,440	128,185	136,860	112,765	249,625
Isingiro	235,621	250,739	58,408	427,952	486,360
Kabale	158,238	173,097	78,585	252,750	331,335
Kabarole	233,648	235,588	158,231	311,005	469,236
Kagadi	171,812	179,221	45,286	305,747	351,033
Kakumiro	147,157	145,951	9,834	283,274	293,108
Kamwenge	202,503	211,951	22,840	391,614	414,454
Kanungu	121,081	131,063	51,008	201,136	252,144
Kasese	338,215	356,772	140,050	554,937	694,987
Kibaale	70,815	70,132	6,650	134,297	140,947
Kiruhura	166,214	161,863	31,874	296,203	328,077
Kiryandongo	132,822	133,375	55,770	210,427	266,197
Kisoro	126,055	155,650	27,611	254,094	281,705
Kyegegwa	140,617	141,020	26,294	255,343	281,637
Kyenjojo	210,599	211,605	64,812	357,392	422,204
Masindi	148,121	142,992	94,438	196,675	291,113
Mbarara	230,082	242,547	195,318	277,311	472,629
Mitooma	86,484	96,960	11,396	172,048	183,444
Ntoroko	34,038	32,967	23,789	43,216	67,005
Ntungamo	232,469	251,372	71,485	412,356	483,841
Rubanda	92,011	104,885	26,669	170,227	196,896
Rubirizi	61,765	67,384	17,274	111,875	129,149
Rukungiri	150,016	164,678	43,576	271,118	314,694
Sheema	99,225	108,118	110,256	97,087	207,343

Appendix 2: The Household Questionnaire and code list for the National Population and Housing Census 2014



Republic of Uganda
 National Population and Housing Census 2014
 HOUSEHOLD QUESTIONNAIRE



BOOK NUMBER

IDENTIFICATION PARTICULARS

WRITE NAME IN CAPITAL LETTERS		CODE
DISTRICT:		
COUNTY/MUNICIPALITY:		
SUB COUNTY/DIVISION/TOWN COUNCIL:		
PARISH/WARD:		
LC1:		
EA:		

ENUMERATOR'S NAME AND CODE:		Code
ENUMERATOR'S SIGNATURE:		
DATE: (dd/mm/yyyy):	<div style="display: inline-block; width: 20px; height: 20px; border: 1px solid black;"></div> / <div style="display: inline-block; width: 20px; height: 20px; border: 1px solid black;"></div> / <div style="display: inline-block; width: 40px; height: 20px; border: 1px solid black;"></div>	
PARISH SUPERVISOR'S NAME AND CODE:		Code
PARISH SUPERVISOR'S SIGNATURE:		
DATE: (dd/mm/yyyy):	<div style="display: inline-block; width: 20px; height: 20px; border: 1px solid black;"></div> / <div style="display: inline-block; width: 20px; height: 20px; border: 1px solid black;"></div> / <div style="display: inline-block; width: 40px; height: 20px; border: 1px solid black;"></div>	

A


Hello, my name is
and I work with Uganda Bureau of Statistics (UBOS). We are conducting the National Population and Housing Census 2014. We are visiting each and every household in the country collecting information about individuals and the homesteads they live in. It takes about 40 minutes to complete the interview. Whatever information you provide will be kept strictly confidential. We would very much appreciate your participation and co-operation in this Census.

Result Code (R1)	Ethnicity (P8)	Country Of Citizenship For Non-Ugandans	Religion (P9)	Section 5: Crop Codes
1 Completed	511 Acholi	555 Kakwa	10 No Religion	10 Maize
2 Partially Completed	512 Aliba	556 Karimojong	11 Anglican	39 Cocoa
3 Not Interviewed	513 Alur	557 Kebu (Okebu)	12 Catholic	40 Paw Paw
	514 Aringa	558 Kuku	13 Muslim	12 Banana (Food)
	515 Baamba	559 Kumam	14 Seventh-Day Adventist	41 Eggplants
	516 Babukusu	560 Lango	15 Orthodox	42 Onions
	517 Babwisi	561 Lendu	16 Pentecostal/ Born Again/ Evangelical	14 Sweet Potatoes
	518 Bafumbira	562 Lugbara	17 Baha'i	43 Passion fruit
	519 Baganda	563 Madi	18 Baptist	15 G/nuts
	520 Bagisu	564 Mening	19 Jews	44 Greens (Doodo/ Nakati/ Bbugga/ Malakwang, etc)
	521 Bagungu	565 Mvuba	20 Presbyterian	17 Millets
	522 Bagwe	566 Napore	21 Mammion	18 Sim Sim
	523 Bagwere	567 Ngikutio	22 Hindu	45 Vanilla
	524 Bahehe	568 Nubi	23 Buddhist	19 Banana (Beer)
	525 Bahororo	569 Nyangia	24 Jehovah's Witness	46 Tea
	526 Bakenyi	570 Pokot	25 Salvation Army	20 Irish Potatoes
	527 Bakiga	571 Relli	26 Traditional	21 Soya Beans
	528 Bakonzo	572 Sabiny	27 Others	48 Barley
	529 Banyabindi	573 Shana		22 Rice
	530 Banyabutumbi	574 So (Tepeth)		49 Spinach
	531 Banyankore	575 Vonoma		23 Banana (sweet)
	532 Banyara	576 Other Ugandan		50 Cucumber
				24 Field Peas
				51 Water melons
				(Kawo)
				52 Carrots
				25 Cow Peas
				53 Garlic
				26 Pigeon Peas
				54 Mushroom
				27 Sugar cane
				55 Tobacco
				28 Yam
				56 Grapes
				29 Avocado
				57 Lemons & Limes
				30 Tomatoes
				58 Tangarines & Mandarines
				31 Sunflower
				59 Straw berries
				32 Cotton
				60 Apples & Apricots
				33 Jackfruit
				61 Pears
				34 Pineapples
				62 Coffee Arabica
				35 Pumpkins
				63 Coffee Robusta
				36 Mango
				96 Other crops
				37 Oranges
				38 Cabbage
				97 N/A

Relationship (P2)	Major Field of Specialization (P20)	Type of Disability (P14-P17)	School Attendance (P18)	Activity Status (P22)	Marital Status (P26)
10 Usual head of hh - Absent	10 Health Sciences	1 No - no difficulty	1 Attending school in 2014	10 Working for pay	1 Never married
11 Usual head of hh - Present	11 Life & Biological Sciences	2 Yes - some difficulty	2 Left school in 2014	11 Employer	2 Currently married/Cohabiting (Monogamous)
12 Spouse	12 Animal Sciences	3 Yes - a lot of difficulty	3 Left school before 2014	12 Own account worker	3 Currently married/Cohabiting (Polygamous)
13 Biological Son	13 Physical/Natural Sciences	4 Cannot do at all	4 Never been to school	13 Helping without pay in hh business	4 Widowed
14 Biological Daughter	14 Sport Sciences	7 Not Applicable	7 NA	14 Volunteer	5 Separated
15 Step son	15 Engineering	8 Don't know		15 An apprentice (not paid)	6 Divorced
16 Step daughter	16 Social Sciences & History			16 Looking for work	7 NA
17 Grandson	17 Agriculture			17 Not working and not looking for work	8 Don't Know
18 Grand daughter	18 Computer & Information Sciences			18 Household chores	
19 Parent to head or spouse	19 Arts			19 Full time student	
20 Brother or Sister to head or spouse	20 Food science			20 Retired/pensioner	
21 Other relative	21 Business Studies			21 Too old to work	
22 Non relative	22 Mathematics			22 To young to work	
	23 Economics			23 Subistence fishery and related workers	
	24 Demography and Population			32 Carpenters, cabinet makers, joiners, brush makers etc.	
	25 Community and Development Studies			33 Forestry and related workers	
	26 Languages & Literature			34 Fashion and Other models sales persons and demonstrators	
	27 Education			35 Textiles and garment trades workers (including tailors)	
	28 Gender Studies			36 Machinery mechanics and fitters	
	29 Psychology			37 Manufacturing laborers	
	30 Sociology			38 Nurses and Midwives	
	31 Special Needs Education			39 Produce buyers	
	32 Peace and conflict studies			40 Secondary education teaching professionals	
	33 Law & Legal Studies			41 Protective service workers, policemen, police wardens	
	34 Visual & Performing Arts			42 Dealers in agricultural and farm Products	
	35 Commerce			43 Messengers, watchers and security workers	
	36 Procurement and Supply Mgt				
	37 Administration and Human Resource				
	38 Communication and Journalism				
	39 Philosophy & Religion				
	40 Architecture & Physical Planning				
	41 Home Economics				
	42 Library and Archives Sciences				
	43 Tourism and hospitality				
	44 Statistics				
	45 Ethic Studies				
	46 Masters Degree				
	47 PhD				
	48 Other				
	49 NA				


Grade Completed (P19)	Occupation (P23)
01 Never been to school	44 Market-oriented crop and animal producers
02 Did not complete Pre-Primary	45 Experienced non-professionals in teaching
03 Completed Pre-Primary	46 Market oriented fishery workers, hunters, and trappers
04 In P1 but did not complete / attend Pre-Primary	47 Transport laborers
10 Did not complete P1	48 Foremen, supervisors in elementary occupation services
11 P1	49 Travel attendants, guides, conductors,
12 P2	50 Market-oriented animal producers
13 P3	51 Cashier, teller, and related clerks, money lender, debt collectors
14 P4	52 Metal molders, welders, sheet metal workers, structural and metal prepares
15 P5	53 Numerical clerks (Statistical, finance, book keeping and accounting)
16 P6	54 Handicraft workers in wood, textiles, and related materials
17 P7	55 Secretaries and Keyboard operating clerks
21 J1-J3	56 Post-primary education teaching associate professionals
31 S1	57 retailers of human drugs
32 S2	58 Traditional medicine practitioners and faith healers
33 S3	59 Medical assistants
34 S4	60 Laborers in mining
35 S5	61 Pre-primary Education Teaching associate professionals
36 S6	62 Physical science and engineering technicians
41 Professional Certificate	63 Electrical and electronic instrument mechanics and fitters
42 Diploma	64 Other street elementary occupation services e.g. shoe polisher, car washers
43 First Degree	65 Religion professionals (ordained catechist)
44 Post Graduate Certificate	66 Computer assistants and computer equipment operators
45 Post Graduate Diploma	67 Finance and sales associate professionals
46 Masters Degree	68 Accountants, business administrators, and business professionals
47 PhD	69 Public and private administrative associate professionals
48 Other	70 Client Information Clerks
49 NA	71 Others
	72 N/A

BOOK NUMBER




Republic of Uganda
National Population and Housing Census 2014

HOUSEHOLD QUESTIONNAIRE



DA2

SHEET NUMBER 01 

SUMMARY INFORMATION

IDENTIFICATION PARTICULARS

	WRITE NAME IN CAPITAL LETTERS	CODE
DISTRICT	<div style="border: 1px solid black; height: 20px;"></div>	<div style="border: 1px solid black; width: 20px; height: 20px;"></div>
COUNTY / MUNICIPALITY	<div style="border: 1px solid black; height: 20px;"></div>	<div style="border: 1px solid black; width: 20px; height: 20px;"></div>
SUB-COUNTY / DIVISION / T.C.	<div style="border: 1px solid black; height: 20px;"></div>	<div style="border: 1px solid black; width: 20px; height: 20px;"></div>
PARISH / WARD	<div style="border: 1px solid black; height: 20px;"></div>	<div style="border: 1px solid black; width: 20px; height: 20px;"></div>
LC1	<div style="border: 1px solid black; height: 20px;"></div>	<div style="border: 1px solid black; width: 20px; height: 20px;"></div>
EA	<div style="border: 1px solid black; height: 20px;"></div>	<div style="border: 1px solid black; width: 20px; height: 20px;"></div>

ENUMERATOR'S NAME AND CODE:

ENUMERATOR'S SIGNATURE:

DATE: (dd/mm/yyyy): / /

PARISH SUPERVISOR'S NAME AND CODE:

PARISH SUPERVISOR'S SIGNATURE:

DATE: (dd/mm/yyyy): / /

NUMBER OF BOOKS USED


BOOK OF

(EXCLUDE SPOILT AND UNUSED BOOKS)

Household Number	Population		
	Male	Female	Total
(1)	(2)	(3)	(4)
<div style="border: 1px solid black; width: 30px; height: 20px;"></div>	<div style="border: 1px solid black; width: 30px; height: 20px;"></div>	<div style="border: 1px solid black; width: 30px; height: 20px;"></div>	<div style="border: 1px solid black; width: 30px; height: 20px;"></div>
<div style="border: 1px solid black; width: 30px; height: 20px;"></div>	<div style="border: 1px solid black; width: 30px; height: 20px;"></div>	<div style="border: 1px solid black; width: 30px; height: 20px;"></div>	<div style="border: 1px solid black; width: 30px; height: 20px;"></div>
<div style="border: 1px solid black; width: 30px; height: 20px;"></div>	<div style="border: 1px solid black; width: 30px; height: 20px;"></div>	<div style="border: 1px solid black; width: 30px; height: 20px;"></div>	<div style="border: 1px solid black; width: 30px; height: 20px;"></div>
<div style="border: 1px solid black; width: 30px; height: 20px;"></div>	<div style="border: 1px solid black; width: 30px; height: 20px;"></div>	<div style="border: 1px solid black; width: 30px; height: 20px;"></div>	<div style="border: 1px solid black; width: 30px; height: 20px;"></div>
<div style="border: 1px solid black; width: 30px; height: 20px;"></div>	<div style="border: 1px solid black; width: 30px; height: 20px;"></div>	<div style="border: 1px solid black; width: 30px; height: 20px;"></div>	<div style="border: 1px solid black; width: 30px; height: 20px;"></div>
<div style="border: 1px solid black; width: 30px; height: 20px;"></div>	<div style="border: 1px solid black; width: 30px; height: 20px;"></div>	<div style="border: 1px solid black; width: 30px; height: 20px;"></div>	<div style="border: 1px solid black; width: 30px; height: 20px;"></div>
<div style="border: 1px solid black; width: 30px; height: 20px;"></div>	<div style="border: 1px solid black; width: 30px; height: 20px;"></div>	<div style="border: 1px solid black; width: 30px; height: 20px;"></div>	<div style="border: 1px solid black; width: 30px; height: 20px;"></div>
<div style="border: 1px solid black; width: 30px; height: 20px;"></div>	<div style="border: 1px solid black; width: 30px; height: 20px;"></div>	<div style="border: 1px solid black; width: 30px; height: 20px;"></div>	<div style="border: 1px solid black; width: 30px; height: 20px;"></div>
<div style="border: 1px solid black; width: 30px; height: 20px;"></div>	<div style="border: 1px solid black; width: 30px; height: 20px;"></div>	<div style="border: 1px solid black; width: 30px; height: 20px;"></div>	<div style="border: 1px solid black; width: 30px; height: 20px;"></div>
<div style="border: 1px solid black; width: 30px; height: 20px;"></div>	<div style="border: 1px solid black; width: 30px; height: 20px;"></div>	<div style="border: 1px solid black; width: 30px; height: 20px;"></div>	<div style="border: 1px solid black; width: 30px; height: 20px;"></div>
<div style="border: 1px solid black; width: 30px; height: 20px;"></div>	<div style="border: 1px solid black; width: 30px; height: 20px;"></div>	<div style="border: 1px solid black; width: 30px; height: 20px;"></div>	<div style="border: 1px solid black; width: 30px; height: 20px;"></div>
<div style="border: 1px solid black; width: 30px; height: 20px;"></div>	<div style="border: 1px solid black; width: 30px; height: 20px;"></div>	<div style="border: 1px solid black; width: 30px; height: 20px;"></div>	<div style="border: 1px solid black; width: 30px; height: 20px;"></div>
<div style="border: 1px solid black; width: 30px; height: 20px;"></div>	<div style="border: 1px solid black; width: 30px; height: 20px;"></div>	<div style="border: 1px solid black; width: 30px; height: 20px;"></div>	<div style="border: 1px solid black; width: 30px; height: 20px;"></div>
<div style="border: 1px solid black; width: 30px; height: 20px;"></div>	<div style="border: 1px solid black; width: 30px; height: 20px;"></div>	<div style="border: 1px solid black; width: 30px; height: 20px;"></div>	<div style="border: 1px solid black; width: 30px; height: 20px;"></div>
<div style="border: 1px solid black; width: 30px; height: 20px;"></div>	<div style="border: 1px solid black; width: 30px; height: 20px;"></div>	<div style="border: 1px solid black; width: 30px; height: 20px;"></div>	<div style="border: 1px solid black; width: 30px; height: 20px;"></div>
<div style="border: 1px solid black; width: 30px; height: 20px;"></div>	<div style="border: 1px solid black; width: 30px; height: 20px;"></div>	<div style="border: 1px solid black; width: 30px; height: 20px;"></div>	<div style="border: 1px solid black; width: 30px; height: 20px;"></div>
<div style="border: 1px solid black; width: 30px; height: 20px;"></div>	<div style="border: 1px solid black; width: 30px; height: 20px;"></div>	<div style="border: 1px solid black; width: 30px; height: 20px;"></div>	<div style="border: 1px solid black; width: 30px; height: 20px;"></div>
<div style="border: 1px solid black; width: 30px; height: 20px;"></div>	<div style="border: 1px solid black; width: 30px; height: 20px;"></div>	<div style="border: 1px solid black; width: 30px; height: 20px;"></div>	<div style="border: 1px solid black; width: 30px; height: 20px;"></div>
<div style="border: 1px solid black; width: 30px; height: 20px;"></div>	<div style="border: 1px solid black; width: 30px; height: 20px;"></div>	<div style="border: 1px solid black; width: 30px; height: 20px;"></div>	<div style="border: 1px solid black; width: 30px; height: 20px;"></div>
<div style="border: 1px solid black; width: 30px; height: 20px;"></div>	<div style="border: 1px solid black; width: 30px; height: 20px;"></div>	<div style="border: 1px solid black; width: 30px; height: 20px;"></div>	<div style="border: 1px solid black; width: 30px; height: 20px;"></div>
<div style="border: 1px solid black; width: 30px; height: 20px;"></div>	<div style="border: 1px solid black; width: 30px; height: 20px;"></div>	<div style="border: 1px solid black; width: 30px; height: 20px;"></div>	<div style="border: 1px solid black; width: 30px; height: 20px;"></div>
<div style="border: 1px solid black; width: 30px; height: 20px;"></div>	<div style="border: 1px solid black; width: 30px; height: 20px;"></div>	<div style="border: 1px solid black; width: 30px; height: 20px;"></div>	<div style="border: 1px solid black; width: 30px; height: 20px;"></div>
<div style="border: 1px solid black; width: 30px; height: 20px;"></div>	<div style="border: 1px solid black; width: 30px; height: 20px;"></div>	<div style="border: 1px solid black; width: 30px; height: 20px;"></div>	<div style="border: 1px solid black; width: 30px; height: 20px;"></div>
<div style="border: 1px solid black; width: 30px; height: 20px;"></div>	<div style="border: 1px solid black; width: 30px; height: 20px;"></div>	<div style="border: 1px solid black; width: 30px; height: 20px;"></div>	<div style="border: 1px solid black; width: 30px; height: 20px;"></div>
<div style="border: 1px solid black; width: 30px; height: 20px;"></div>	<div style="border: 1px solid black; width: 30px; height: 20px;"></div>	<div style="border: 1px solid black; width: 30px; height: 20px;"></div>	<div style="border: 1px solid black; width: 30px; height: 20px;"></div>
<div style="border: 1px solid black; width: 30px; height: 20px;"></div>	<div style="border: 1px solid black; width: 30px; height: 20px;"></div>	<div style="border: 1px solid black; width: 30px; height: 20px;"></div>	<div style="border: 1px solid black; width: 30px; height: 20px;"></div>
<div style="border: 1px solid black; width: 30px; height: 20px;"></div>	<div style="border: 1px solid black; width: 30px; height: 20px;"></div>	<div style="border: 1px solid black; width: 30px; height: 20px;"></div>	<div style="border: 1px solid black; width: 30px; height: 20px;"></div>
<div style="border: 1px solid black; width: 30px; height: 20px;"></div>	<div style="border: 1px solid black; width: 30px; height: 20px;"></div>	<div style="border: 1px solid black; width: 30px; height: 20px;"></div>	<div style="border: 1px solid black; width: 30px; height: 20px;"></div>
<div style="border: 1px solid black; width: 30px; height: 20px;"></div>	<div style="border: 1px solid black; width: 30px; height: 20px;"></div>	<div style="border: 1px solid black; width: 30px; height: 20px;"></div>	<div style="border: 1px solid black; width: 30px; height: 20px;"></div>
<div style="border: 1px solid black; width: 30px; height: 20px;"></div>	<div style="border: 1px solid black; width: 30px; height: 20px;"></div>	<div style="border: 1px solid black; width: 30px; height: 20px;"></div>	<div style="border: 1px solid black; width: 30px; height: 20px;"></div>
<div style="border: 1px solid black; width: 30px; height: 20px;"></div>	<div style="border: 1px solid black; width: 30px; height: 20px;"></div>	<div style="border: 1px solid black; width: 30px; height: 20px;"></div>	<div style="border: 1px solid black; width: 30px; height: 20px;"></div>
<div style="border: 1px solid black; width: 30px; height: 20px;"></div>	<div style="border: 1px solid black; width: 30px; height: 20px;"></div>	<div style="border: 1px solid black; width: 30px; height: 20px;"></div>	<div style="border: 1px solid black; width: 30px; height: 20px;"></div>
<div style="border: 1px solid black; width: 30px; height: 20px;"></div>	<div style="border: 1px solid black; width: 30px; height: 20px;"></div>	<div style="border: 1px solid black; width: 30px; height: 20px;"></div>	<div style="border: 1px solid black; width: 30px; height: 20px;"></div>
<div style="border: 1px solid black; width: 30px; height: 20px;"></div>	<div style="border: 1px solid black; width: 30px; height: 20px;"></div>	<div style="border: 1px solid black; width: 30px; height: 20px;"></div>	<div style="border: 1px solid black; width: 30px; height: 20px;"></div>
<div style="border: 1px solid black; width: 30px; height: 20px;"></div>	<div style="border: 1px solid black; width: 30px; height: 20px;"></div>	<div style="border: 1px solid black; width: 30px; height: 20px;"></div>	<div style="border: 1px solid black; width: 30px; height: 20px;"></div>
<div style="border: 1px solid black; width: 30px; height: 20px;"></div>	<div style="border: 1px solid black; width: 30px; height: 20px;"></div>	<div style="border: 1px solid black; width: 30px; height: 20px;"></div>	<div style="border: 1px solid black; width: 30px; height: 20px;"></div>
<div style="border: 1px solid black; width: 30px; height: 20px;"></div>	<div style="border: 1px solid black; width: 30px; height: 20px;"></div>	<div style="border: 1px solid black; width: 30px; height: 20px;"></div>	<div style="border: 1px solid black; width: 30px; height: 20px;"></div>
<div style="border: 1px solid black; width: 30px; height: 20px;"></div>	<div style="border: 1px solid black; width: 30px; height: 20px;"></div>	<div style="border: 1px solid black; width: 30px; height: 20px;"></div>	<div style="border: 1px solid black; width: 30px; height: 20px;"></div>
<div style="border: 1px solid black; width: 30px; height: 20px;"></div>	<div style="border: 1px solid black; width: 30px; height: 20px;"></div>	<div style="border: 1px solid black; width: 30px; height: 20px;"></div>	<div style="border: 1px solid black; width: 30px; height: 20px;"></div>
<div style="border: 1px solid black; width: 30px; height: 20px;"></div>	<div style="border: 1px solid black; width: 30px; height: 20px;"></div>	<div style="border: 1px solid black; width: 30px; height: 20px;"></div>	<div style="border: 1px solid black; width: 30px; height: 20px;"></div>
<div style="border: 1px solid black; width: 30px; height: 20px;"></div>	<div style="border: 1px solid black; width: 30px; height: 20px;"></div>	<div style="border: 1px solid black; width: 30px; height: 20px;"></div>	<div style="border: 1px solid black; width: 30px; height: 20px;"></div>
<div style="border: 1px solid black; width: 30px; height: 20px;"></div>	<div style="border: 1px solid black; width: 30px; height: 20px;"></div>	<div style="border: 1px solid black; width: 30px; height: 20px;"></div>	<div style="border: 1px solid black; width: 30px; height: 20px;"></div>
<div style="border: 1px solid black; width: 30px; height: 20px;"></div>	<div style="border: 1px solid black; width: 30px; height: 20px;"></div>	<div style="border: 1px solid black; width: 30px; height: 20px;"></div>	<div style="border: 1px solid black; width: 30px; height: 20px;"></div>
<div style="border: 1px solid black; width: 30px; height: 20px;"></div>	<div style="border: 1px solid black; width: 30px; height: 20px;"></div>	<div style="border: 1px solid black; width: 30px; height: 20px;"></div>	<div style="border: 1px solid black; width: 30px; height: 20px;"></div>
<div style="border: 1px solid black; width: 30px; height: 20px;"></div>	<div style="border: 1px solid black; width: 30px; height: 20px;"></div>	<div style="border: 1px solid black; width: 30px; height: 20px;"></div>	<div style="border: 1px solid black; width: 30px; height: 20px;"></div>
<div style="border: 1px solid black; width: 30px; height: 20px;"></div>	<div style="border: 1px solid black; width: 30px; height: 20px;"></div>	<div style="border: 1px solid black; width: 30px; height: 20px;"></div>	<div style="border: 1px solid black; width: 30px; height: 20px;"></div>
<div style="border: 1px solid black; width: 30px; height: 20px;"></div>	<div style="border: 1px solid black; width: 30px; height: 20px;"></div>	<div style="border: 1px solid black; width: 30px; height: 20px;"></div>	<div style="border: 1px solid black; width: 30px; height: 20px;"></div>
<div style="border: 1px solid black; width: 30px; height: 20px;"></div>	<div style="border: 1px solid black; width: 30px; height: 20px;"></div>	<div style="border: 1px solid black; width: 30px; height: 20px;"></div>	<div style="border: 1px solid black; width: 30px; height: 20px;"></div>
<div style="border: 1px solid black; width: 30px; height: 20px;"></div>	<div style="border: 1px solid black; width: 30px; height: 20px;"></div>	<div style="border: 1px solid black; width: 30px; height: 20px;"></div>	<div style="border: 1px solid black; width: 30px; height: 20px;"></div>
<div style="border: 1px solid black; width: 30px; height: 20px;"></div>	<div style="border: 1px solid black; width: 30px; height: 20px;"></div>	<div style="border: 1px solid black; width: 30px; height: 20px;"></div>	<div style="border: 1px solid black; width: 30px; height: 20px;"></div>
<div style="border: 1px solid black; width: 30px; height: 20px;"></div>	<div style="border: 1px solid black; width: 30px; height: 20px;"></div>	<div style="border: 1px solid black; width: 30px; height: 20px;"></div>	<div style="border: 1px solid black; width: 30px; height: 20px;"></div>
<div style="border: 1px solid black; width: 30px; height: 20px;"></div>	<div style="border: 1px solid black; width: 30px; height: 20px;"></div>	<div style="border: 1px solid black; width: 30px; height: 20px;"></div>	<div style="border: 1px solid black; width: 30px; height: 20px;"></div>
<div style="border: 1px solid black; width: 30px; height: 20px;"></div>	<div style="border: 1px solid black; width: 30px; height: 20px;"></div>	<div style="border: 1px solid black; width: 30px; height: 20px;"></div>	<div style="border: 1px solid black; width: 30px; height: 20px;"></div>
<div style="border: 1px solid black; width: 30px; height: 20px;"></div>	<div style="border: 1px solid black; width: 30px; height: 20px;"></div>	<div style="border: 1px solid black; width: 30px; height: 20px;"></div>	<div style="border: 1px solid black; width: 30px; height: 20px;"></div>
<div style="border: 1px solid black; width: 30px; height: 20px;"></div>	<div style="border: 1px solid black; width: 30px; height: 20px;"></div>	<div style="border: 1px solid black; width: 30px; height: 20px;"></div>	<div style="border: 1px solid black; width: 30px; height: 20px;"></div>
<div style="border: 1px solid black; width: 30px; height: 20px;"></div>	<div style="border: 1px solid black; width: 30px; height: 20px;"></div>	<div style="border: 1px solid black; width: 30px; height: 20px;"></div>	<div style="border: 1px solid black; width: 30px; height: 20px;"></div>
<div style="border: 1px solid black; width: 30px; height: 20px;"></div>	<div style="border: 1px solid black; width: 30px; height: 20px;"></div>	<div style="border: 1px solid black; width: 30px; height: 20px;"></div>	<div style="border: 1px solid black; width: 30px; height: 20px;"></div>
<div style="border: 1px solid black; width: 30px; height: 20px;"></div>	<div style="border: 1px solid black; width: 30px; height: 20px;"></div>	<div style="border: 1px solid black; width: 30px; height: 20px;"></div>	<div style="border: 1px solid black; width: 30px; height: 20px;"></div>
<div style="border: 1px solid black; width: 30px; height: 20px;"></div>	<div style="border: 1px solid black; width: 30px; height: 20px;"></div>	<div style="border: 1px solid black; width: 30px; height: 20px;"></div>	<div style="border: 1px solid black; width: 30px; height: 20px;"></div>
<div style="border: 1px solid black; width: 30px; height: 20px;"></div>	<div style="border: 1px solid black; width: 30px; height: 20px;"></div>	<div style="border: 1px solid black; width: 30px; height: 20px;"></div>	<div style="border: 1px solid black; width: 30px; height: 20px;"></div>
<div style="border: 1px solid black; width: 30px; height: 20px;"></div>	<div style="border: 1px solid black; width: 30px; height: 20px;"></div>	<div style="border: 1px solid black; width: 30px; height: 20px;"></div>	<div style="border: 1px solid black; width: 30px; height: 20px;"></div>
<div style="border: 1px solid black; width: 30px; height: 20px;"></div>	<div style="border: 1px solid black; width: 30px; height: 20px;"></div>	<div style="border: 1px solid black; width: 30px; height: 20px;"></div>	<div style="border: 1px solid black; width: 30px; height: 20px;"></div>
<div style="border: 1px solid black; width: 30px; height: 20px;"></div>	<div style="border: 1px solid black; width: 30px; height: 20px;"></div>	<div style="border: 1px solid black; width: 30px; height: 20px;"></div>	<div style="border: 1px solid black; width: 30px; height: 20px;"></div>
<div style="border: 1px solid black; width: 30px; height: 20px;"></div>	<div style="border: 1px solid black; width: 30px; height: 20px;"></div>	<div style="border: 1px solid black; width: 30px; height: 20px;"></div>	<div style="border: 1px solid black; width: 30px; height: 20px;"></div>
<div style="border: 1px solid black; width: 30px; height: 20px;"></div>	<div style="border: 1px solid black; width: 30px; height: 20px;"></div>	<div style="border: 1px solid black; width: 30px; height: 20px;"></div>	<div style="border: 1px solid black; width: 30px; height: 20px;"></div>
<div style="border: 1px solid black; width: 30px; height: 20px;"></div>	<div style="border: 1px solid black; width: 30px; height: 20px;"></div>	<div style="border: 1px solid black; width: 30px; height: 20px;"></div>	<div style="border: 1px solid black; width: 30px; height: 20px;"></div>
<div style="border: 1px solid black; width: 30px; height: 20px;"></div>	<div style="border: 1px solid black; width: 30px; height: 20px;"></div>	<div style="border: 1px solid black; width: 30px; height: 20px;"></div>	<div style="border: 1px solid black; width: 30px; height: 20px;"></div>
<div style="border: 1px solid black; width: 30px; height: 20px;"></div>	<div style="border: 1px solid black; width: 30px; height: 20px;"></div>	<div style="border: 1px solid black; width: 30px; height: 20px;"></div>	<div style="border: 1px solid black; width: 30px; height: 20px;"></div>
<div style="border: 1px solid black; width: 30px; height: 20px;"></div>	<div style="border: 1px solid black; width: 30px; height: 20px;"></div>	<div style="border: 1px solid black; width: 30px; height: 20px;"></div>	<div style="border: 1px solid black; width: 30px; height: 20px;"></div>
<div style="border: 1px solid black; width: 30px; height: 20px;"></div>	<div style="border: 1px solid black; width: 30px; height: 20px;"></div>	<div style="border: 1px solid black; width: 30px; height: 20px;"></div>	<div style="border: 1px solid black; width: 30px; height: 20px;"></div>
<div style="border: 1px solid black; width: 30px; height: 20px;"></div>	<div style="border: 1px solid black; width: 30px; height: 20px;"></div>	<div style="border: 1px solid black; width: 30px; height: 20px;"></div>	<div style="border: 1px solid black; width: 30px; height: 20px;"></div>
<div style="border: 1px solid black; width: 30px; height: 20px;"></div>	<div style="border: 1px solid black; width: 30px; height: 20px;"></div>	<div style="border: 1px solid black; width: 30px; height: 20px;"></div>	<div style="border: 1px solid black; width: 30px; height: 20px;"></div>
<div style="border: 1px solid black; width: 30px; height: 20px;"></div>	<div style="border: 1px solid black; width: 30px; height: 20px;"></div>	<div style="border: 1px solid black; width: 30px; height: 20px;"></div>	<div style="border: 1px solid black; width: 30px; height: 20px;"></div>
<div style="border: 1px solid black; width: 30px; height: 20px;"></div>	<div style="border: 1px solid black; width: 30px; height: 20px;"></div>	<div style="border: 1px solid black; width: 30px; height: 20px;"></div>	<div style="border: 1px solid black; width: 30px; height: 20px;"></div>
<div style="border: 1px solid black; width: 30px; height: 20px;"></div>	<div style="border: 1px solid black; width: 30px; height: 20px;"></div>	<div style="border: 1px solid black; width: 30px; height: 20px;"></div>	<div style="border: 1px solid black; width: 30px; height: 20px;"></div>
<div style="border: 1px solid black; width: 30px; height: 20px;"></div>	<div style="border: 1px solid black; width: 30px; height: 20px;"></div>	<div style="border: 1px solid black; width: 30px; height: 20px;"></div>	<div style="border: 1px solid black; width: 30px; height: 20px;"></div>
<div style="border: 1px solid black; width: 30px; height: 20px;"></div>	<div style="border: 1px solid black; width: 30px; height: 20px;"></div>	<div style="border: 1px solid black; width: 30px; height: 20px;"></div>	<div style="border: 1px solid black; width: 30px; height: 20px;"></div>
<div style="border: 1px solid black; width: 30px; height: 20px;"></div>	<div style="border: 1px solid black; width: 30px; height: 20px;"></div>	<div style="border: 1px solid black; width: 30px; height: 20px;"></div>	<div style="border: 1px solid black; width: 30px; height: 20px;"></div>
<div style="border: 1px solid black; width: 30px; height: 20px;"></div>	<div style="border: 1px solid black; width: 30px; height: 20px;"></div>	<div style="border: 1px solid black; width: 30px; height: 20px;"></div>	<div style="border: 1px solid black; width: 30px; height: 20px;"></div>
<div style="border: 1px solid black; width: 30px; height: 20px;"></div>	<div style="border: 1px solid black; width: 30px; height: 20px;"></div>	<div style="border: 1px solid black; width: 30px; height: 20px;"></div>	<div style="border: 1px solid black; width: 30px; height: 20px;"></div>
<div style="border: 1px solid black; width: 30px; height: 20px;"></div>	<div style="border: 1px solid black; width: 30px; height: 20px;"></div>	<div style="border: 1px solid black; width: 30px; height: 20px;"></div>	<div style="border: 1px solid black; width: 30px; height: 20px;"></div>
<div style="border: 1px solid black; width: 30px; height: 20px;"></div>	<div style="border: 1px solid black; width: 30px; height: 20px;"></div>	<div style="border: 1px solid black; width: 30px; height: 20px;"></div>	

80

81

DD4						HOUSEHOLD NUMBER							
SECTION 2: HOUSING CONDITIONS						SECTION 3: COMMUNITY SERVICES				SECTION 4: HOUSEHOLD CHARACTERISTICS			
What is the occupancy tenure of the dwelling unit?	What type of dwelling unit does this household occupy?	How many rooms were used on the Census Night for sleeping?	Types of materials mainly used for construction of the roof	Types of materials mainly used for construction of the wall	Types of materials mainly used for the floor	What is the distance from home to the nearest on foot, irrespective of whether you use the service or not <i>(Record distance in kms, if distance is given in miles, refer to code list H7-H13)</i>		What source of energy does this household mainly use for lighting?					
H1	H2	H3	H4	H5	H6	H7	H8	H9	H10	H11	H12	H13	H14
10 = Owner occupied 11 = Free Public 12 = Free Private 13 = Subsidized public 14 = Subsidized private 15 = Rented public 16 = Rented private 96 = Other	10 = Detached house (single or multi-storey) 11 = Semi-Detached house 12 = Flat in a Block of Flats 13 = Room or rooms of a Main House 14 = Servants Quarters 15 = Tenement (Muzigo) 16 = Garage 17 = Go down/Basement 18 = Store 96 = Other	If 9 or more were used, record 9	10 = Iron sheets 11 = Tiles 12 = Asbestos 13 = Concrete 14 = Tins 15 = Thatch 96 = Other	10 = Concrete/Stones 11 = Cement Blocks 12 = Burnt/Stabilised bricks 13 = Unburnt bricks with Cement 14 = Unburnt bricks with mud 15 = Wood 16 = Mud and Pole 17 = Tin/Iron sheets 96 = Other	10 = Earth 11 = Rammed earth 12 = Cement screed 13 = Concrete 14 = Tiles 15 = Brick 16 = Stone 17 = Wood 96 = Other	Public Health Facility	Private Health Facility	Public Primary School	Private Primary School	Public Secondary School	Private Secondary School	Police Station / Police Post	10 = Electricity- National grid (Umeme) 11 = Electricity- Solar 12 = Electricity- Personal Generator 13 = Electricity- Community/thermal plant 14 = Gas 15 = Liquefied Petroleum Gas (LPG) 16 = Biogas 17 = Paraffin-Lantern 18 = Paraffin-Tadooba 19 = Candles 20 = Firewood 21 = Cow Dung 22 = Grass (reeds) 96 = Other
SECTION 4: HOUSEHOLD CHARACTERISTICS (CONTINUED)													
What source of energy does this household mainly use for cooking?	What is the household's main source of water for drinking?	What is the distance to this source of water?	What type of toilet facility does this household mainly use?	Does the Household share this toilet facility with other households?	What is the most commonly used method of solid waste disposal from the household?	What type of bathroom does this household mainly use?	What type of kitchen does this household mainly use?						
H15	H16	H17	H18	H19	H20	H21	H22						
10 = Electricity- National grid (Umeme) 11 = Electricity- Solar 12 = Electricity- Personal Generator 13 = Electricity- Community/thermal plant 14 = Gas 15 = Liquefied Petroleum Gas (LPG) 16 = Biogas 17 = Paraffin-Stove 18 = Charcoal 19 = Firewood 20 = Cow Dung 21 = Grass (reeds) 96 = Other	10 = Piped water into dwelling 11 = Piped water to the yard 12 = Public Taps 13 = Borehole in yard/plot 14 = Public borehole 15 = Protected well/spring 16 = Unprotected well/spring 17 = River/Stream/Lake 18 = Vendor 19 = Tanker Truck 20 = Gravity Flow Scheme 21 = Rain Water 22 = Bottled Water 96 = Other	<i>(Record distance in kms, if distance is given in miles, see conversion list)</i> <i>If the water source is on premises, record 0.0</i>	10 = Flush Toilet 11 = VIP Latrine 12 = Covered Pit Latrine <u>with a slab</u> 13 = Covered Pit Latrine <u>without a slab</u> 14 = Uncovered Pit Latrine <u>with a slab</u> 15 = Uncovered Pit Latrine <u>without a slab</u> 16 = Ecosan (compost toilet) 17 = No facility, bush, polythene bags, bucket, etc 96 = Other	1 = Yes 2 = No 7 = N/A (For "No Facility, Bush, Polythene bags, bucket etc)	10 = Occupants dispose solid waste in the garden, and DO NOT burn or bury it. 11 = Occupants burn solid waste 12 = Occupants bury solid waste 13 = Occupants dispose solid waste in a local dump supervised by urban authorities 14 = Occupants dispose solid waste in a local dump NOT supervised by urban authorities 15 = Solid waste collected by waste vendor 16 = Occupants dispose solid waste into river/sea/stream/pond 96 = Other arrangements	10 = Inside, drainage provided 11 = Inside, no drainage provided 12 = Outside built, drainage provided 13 = Outside built, no drainage provided 14 = Make shift 15 = None 96 = Other	10 = Inside, specific room 11 = Inside, no specific room 12 = Outside, built 13 = Make shift 14 = Open space						
HOUSEHOLD ASSETS		INFORMATION	POSTAL SERVICES	MOSQUITO NETS	SOURCE OF LIVELIHOOD	REMITTANCES							
Does any member of this household own..... (ASSETS)? <i>If Yes, record the number, if 9 or more, write 9</i> <i>If none, record 0</i>		What is the household's main source of information?	Did any member of this household send/receive a letter/parcel by postal services during the last 12 months?	Does this household have any mosquito nets?	IF YES IN H26, were the mosquito nets given free or were they bought? Record the appropriate code in the boxes below 1 = Yes; 2 = No; 7 = NA; 8 = DK	What was the main source of the household's livelihood in the last 12 months?		Did the household receive any money or physical items from any relative / family member / friend abroad during the last 12 months?		IF YES IN H29, in which countries do the relatives / family members / friends reside? 1 = Yes; 2 = No; 7 = N/A			
H23	H24	H25	H26	H27	H28	H29	H30						
A: Motor vehicle B: Motor cycle C: Bicycle D: Wheel Chair E: Canoe / Boat F: Donkey	G: Television H: Radio I: Fixed Phone J: Computer / Laptop K: Generator	10 = Radio 11 = Word of Mouth 12 = Telephone 13 = Print Media 14 = Post Mail 15 = Hand Mail 16 = Television 17 = Community Meetings 18 = Internet 19 = Community Announcer 96 = Other	1 = Yes, Once 2 = Yes, Twice 3 = Yes, Thrice 4 = Yes, 4 times and above 5 = No 8 = Don't Know	1 = Yes 2 = No	A= Given free by Gov't B= Given free by NGO C= Given free by friend/relative D= Bought	10 = Subsistence farming 11 = Commercial farming 12 = Employment income 13 = Business Enterprise 14 = Cottage Industry 15 = Property Income 16 = Family / Friends / Relatives 17 = Institutional or Program support (e.g Red Cross, WFP, e.t.c) 18 = Sale of assets 96 = Other	1 = Yes, both goods and money 2 = Yes, Money only 3 = Yes, Goods only 4 = No 8 = DK	A. Australia B. Canada C. France D. Germany E. India F. Japan G. Kenya H. Libya I. Saudi Arabia	J. South Africa K. U.K L. U.S.A M. Sweden N. United Arab Emirates O. Yemen P. South Sudan X. Other country Y. Don't know country of origin				

BOOK NUMBER				SHEET NUMBER 03				HOUSEHOLD NUMBER						
SECTION 4: HOUSEHOLD CHARACTERISTICS (CONTINUED)								SECTION 5: AGRICULTURAL MODULE						
H31 Does any member in this household have a functional account in the Bank or any other financial institution? (Active in last 12 months) 1= Yes, have an account in the Bank 2= Yes, have an account in another financial institution 3= Yes, have both in a bank and another financial institution 4= No 8= DK	H32 How many meals do household members aged 5 years and above usually eat on average per day? (Record number of meals in the box provided)	H33 Does every member in this household use soap to bathe? 1 = Yes 2 = No 8 = DK	H34 Did every member in this household take sugar (at least once a day) during the last week? 1 = Yes 2 = No 8 = DK	H35 Do you have salt in the house now? 1 = Yes 2 = No 8 = DK	H36 Does every member in this household have at least two sets of clothing? 1 = Yes 2 = No 8 = DK	H37 Does every member in this household have at least one pair of shoes? WITH EXCEPTION OF CHILDREN AGED ONE YEAR OR LESS 1 = Yes 2 = No 8 = DK	H38 Does every child in this household (i.e. all those under 18 years) have a separate blanket ? 1=Yes 2=No 7=N/A	A1 Does this household currently undertake any of the following agricultural activities 1 =Yes, within EA 2 =Yes, outside EA but within District 3 = No I. Exotic / Cross breed cattle II. Local cattle rearing III. Goat rearing IV. Sheep rearing V. Piggery (pig rearing) VI Poultry/Birds keeping VII. Rabbit rearing VIII. Apiculture (Bee keeping) IX. Aquaculture (fish farming) X. Presence of Forest / wooded land XI. Crop growing	A2 IF YES IN A1, how many does this household own?	A3 IF YES IN A1, what is the main purpose of production? 1=Home Consumption 2=Sale 7=N/A	A4 List the crops grown on the holding in order of importance Ser. No. Crop Name Crop Code If no crop grown, write 97			
H39 Is any member of the household involved in any household-based enterprise ? 1 = Yes 2 = No								H40 What is the nature of the enterprise? (If the household has more than one enterprise, record the one considered by the family as the most important) 10 Agriculture 11 Trade 12 Food processing 13 Other manufacturing 14 Services 15 Hotels and Restaurant 16 Mining and Quarrying 96 Other 97 No enterprise						
SECTION 6: DEATHS IN THE HOUSEHOLD IN THE LAST 12 MONTHS														
D1 Did any deaths occur in this household in the last 12 months? I mean from September 2013 upto December 2013. What about from 1st January 2014 to 27th August 2014?	D2 What was the name of the deceased? If no death in D1, write "Not Applicable" and end interview	D3 What was the sex of [NAME]? 1 = Male 2 = Female 7 = N/A	D4 How old was [NAME] at the time of death (in completed years)? If age is less than one year, write 00	D5 What was the cause of [NAME'S] death? 1 = Disease 2 = Accident 3 = Violence 4 = Witchcraft 6 = Others 7 = N/A 8 = DK	D6 Was [NAME] pregnant at the time of her death? 1= Yes 2= No 7= N/A 8= DK	D7 Did [NAME] die while giving birth? 1= Yes 2= No 7= N/A 8= DK	D8 Did [NAME] die within 6 weeks after delivery? 1= Yes 2= No 7= N/A 8= DK	If there is any "YES" in A1, ask Question A5, otherwise write 97 in Question A5 <table border="1"> <tr> <td>A5 Which of the household members is the lead holder? (Record the person number of holder from P0) If not listed, record 00</td> <td>A6 Does the holding carry out any type of irrigation? 1=Yes 2=No 7=N/A</td> <td>A7 Does this household own agricultural land? 1 = Yes 2 = No</td> </tr> </table>				A5 Which of the household members is the lead holder? (Record the person number of holder from P0) If not listed, record 00	A6 Does the holding carry out any type of irrigation? 1=Yes 2=No 7=N/A	A7 Does this household own agricultural land? 1 = Yes 2 = No
A5 Which of the household members is the lead holder? (Record the person number of holder from P0) If not listed, record 00	A6 Does the holding carry out any type of irrigation? 1=Yes 2=No 7=N/A	A7 Does this household own agricultural land? 1 = Yes 2 = No												

DISTRICT OF PREVIOUS RESIDENCE (P12)					H7-H13, H17			
Central	Eastern	Northern	Western	Country of Previous Residence	Distance Conversion			
101 Kalangala	201 Bugiri	301 Adjumani	401 Bundibugyo	671 Kenya	1 mile = 1.6 km			
102 Kampala	202 Busia	302 Apac	402 Bushenyi	672 Tanzania	Mile	Km	Mile	Km
103 Kiboga	203 Iganga	303 Arua	403 Hoima	673 Rwanda	0.5	= 0.8	16.5	= 26.4
104 Luwero	204 Jinja	304 Gulu	404 Kabale	674 Burundi	1.0	= 1.6	17.0	= 27.2
105 Masaka	205 Kamuli	305 Kitgum	405 Kabarole	675 South Sudan	1.5	= 2.4	17.5	= 28.0
106 Mpigi	206 Kapchorwa	306 Kotido	406 Kasese	676 Dem. Rep. Of Congo	2.0	= 3.2	18.0	= 28.8
107 Mubende	207 Katakwi	307 Lira	407 Kibaale	677 Somalia	2.5	= 4.0	18.5	= 29.6
108 Mukono	208 Kumi	308 Moroto	408 Kisoro	678 Other Africa	3.0	= 4.8	19.0	= 30.4
109 Nakasongola	209 Mbale	309 Moyo	409 Masindi	681 United Kingdom	3.5	= 5.6	19.5	= 31.2
110 Rakai	210 Pallisa	310 Nebbi	410 Mbarara	682 Other Europe	4.0	= 6.4	20.0	= 32.0
111 Sembabule	211 Soroti	311 Nakapiripirit	411 Ntungamo	683 Asia 684 USA	4.5	= 7.2	20.5	= 32.8
112 Kayunga	212 Tororo	312 Pader	412 Rukungiri	685 Canada	5.0	= 8.0	21.0	= 33.6
113 Wakiso	213 Kaberamaido	313 Yumbe	413 Kamwenge	686 Central & Latin America	5.5	= 8.8	21.5	= 34.4
114 Lyantonde	214 Mayuge	314 Abim	414 Kanungu	687 Australia	6.0	= 9.6	22.0	= 35.2
115 Mityana	215 Sironko	315 Amolatar	415 Kyenjojo	688 Oceania	6.5	= 10.4	22.5	= 36.0
116 Nakaseke	216 Amuria	316 Amuru	416 Bulisa	689 Non-Ugandan-Not Stated	7.0	= 11.2	23.0	= 36.8
117 Buikwe	217 Budaka	317 Dokolo	417 Ibanda		7.5	= 12.0	23.5	= 37.6
118 Bukomasimbi	218 Bududa	318 Kaabong	418 Isingiro		8.0	= 12.8	24.0	= 38.4
119 Butambala	219 Bukedea	319 Koboko	419 Kiruhura		8.5	= 13.6	24.5	= 39.2
120 Buvuma	220 Bukwo	320 Maracha	420 Buhweju		9.0	= 14.4	25.0	= 40.0
121 Gomba	221 Butaleja	321 Oyam	421 Kiryandongo		9.5	= 15.2	25.5	= 40.8
122 Kalungu	222 Kaliro	322 Agago	422 Kyegegwa		10.0	= 16.0	26.0	= 41.6
123 Kyankwanzi	223 Manafwa	323 Alebtong	423 Mitooma		10.5	= 16.8	26.5	= 42.4
124 Lwengo	224 Namutumba	324 Amudat	424 Ntoroko		11.0	= 17.6	27.0	= 43.2
	225 Bulambuli	325 Kole	425 Rubirizi		11.5	= 18.4	27.5	= 44.0
	226 Buyende	326 Lamwo	426 Sheema		12.0	= 19.2	28.0	= 44.8
	227 Kibuku	327 Napak			12.5	= 20.0	28.5	= 45.6
	228 Kween	328 Nwoya			13.0	= 20.8	29.0	= 46.4
	229 Luuka	329 Otuke			13.5	= 21.6	29.5	= 47.2
	230 Namayingo	330 Zombo			14.0	= 22.4	30.0	= 48.0
	231 Ngora				14.5	= 23.2	30.5	= 48.8
	232 Serere				15.0	= 24.0	31.0	= 49.6
					15.5	= 24.8	31.5	= 50.4
					16.0	= 25.6	32.0	= 51.2