



National Population and Housing Census 2014

Area Specific Profiles



Kisoro District

April 2017

This report presents findings of National Population and Housing Census (NPHC) 2014 undertaken by the Uganda Bureau of Statistics (UBOS). Additional information about the Census may be obtained from the UBOS Head Office, Statistics House, Plot 9 Colville Street, P. O. Box 7186, Kampala, Uganda; Telephone: +256-414 706000 Fax: +256-414 237553; E-mail: ubos@ubos.org; Website: www.ubos.org

Cover Photos: Uganda Bureau of Statistics

Recommended Citation

Uganda Bureau of Statistics 2017, The National Population and Housing Census 2014 – Area Specific Profile Series, Kampala.

FOREWORD

Demographic and socio-economic data are useful for planning and evidence-based decision making in any country. Such data are collected through Population Censuses, Demographic and Socio-economic Surveys, Civil Registration Systems and other Administrative sources. In Uganda, however, the Population and Housing Census remains the main source of demographic data, especially at the sub-national level.

Population Census taking in Uganda dates back to 1911 and since then, the country has undertaken five such Censuses. The most recent, the National Population and Housing Census 2014, was undertaken under the theme 'Counting for Planning and Improved Service Delivery'. The enumeration for the 2014 Census was conducted in August/September 2014. The Uganda Bureau of Statistics (UBOS) worked closely with different Government Ministries, Departments and Agencies (MDAs) as well as Local Governments (LGs) to undertake the census exercise.

The 2014 Census provides several statistics on different aspects of the population. These include the population size and distribution which is a key indicator used for resource allocation, measurement of the extent of service delivery, decision making and budgeting among others. Other information includes the characteristics of the population, those of the dwellings they live in and information on the Household based Agricultural activities.

On behalf of the Bureau, I would like to appreciate the Government of Uganda for providing the necessary resources and infrastructure for undertaking the National Population and Housing Census (NPHC) 2014. In addition, the Bureau would like to thank the Development Partners, particularly United Kingdom Aid (UKAid), the United Nations Fund for Population Activities (UNFPA) and the United Nations Children's Fund (UNICEF) for providing technical and financial support towards the Census. The Bureau would also like to thank the Media for creating awareness about the Census 2014 and, most importantly, the individual households who voluntarily provided the required information.

Together We Count



Ben Paul Mungyereza
EXECUTIVE DIRECTOR

PREFACE

The Uganda Bureau of Statistics Act No. 12 of 1998 provides for the Minister responsible for Planning to direct ‘that a Census be taken’ on any matter specified in the Act. This was the legal basis for conducting the National Population and Housing Census (NPHC) 2014. The long-term objective of the NPHC 2014 is to ensure availability of bench-mark demographic and socio-economic data for use in planning, evidence based decision making, policy formulation and programme evaluation.

In order to support the planning process, the results from the Census 2014 are being released in phases as and when they become available. The Provisional Results Report was released in November, 2014 followed by the Final Results which were released in March 2016 and the Sub-county Reports in June 2016. These reports collectively provided information on the characteristics of the population and households at the national, district and sub-county levels.

The **Constituency Profiles Series** presents the characteristics of the population and household as well as the housing conditions of the population in each parliamentary constituency of the district. For convenience, however, the profiles of all constituencies in one district have been published in one report. In each report, the Appendix has selected national level tables for reference.

Uganda Bureau of Statistics (UBOS) is in the process of producing several other reports including the National Analytical Results (Monograph Series), District-level Analytical Reports and the Census Atlas. These will present detailed findings covering more indicators on different thematic areas. In addition to the above reports, the Bureau will be providing electronic datasets to facilitate deeper analysis of the data.

The Bureau, appeals to Policy Makers, Researchers and Academicians to make extensive use of this information for policy analysis and evidence-based decision-making at different levels of service delivery. Together we can harness information resources from the Census to improve service delivery and create a better Uganda.

ABOUT THE INDICATORS

Household

A group of persons who usually eat and live together. A household may be comprised of one or more persons provided they share the same meal and sleep under the same roof. The persons may be related usually in a family setting or may not be related.

Household population

All those persons who were enumerated in households. It excludes population which was enumerated on the streets (floating population) or those who were living in Institutions such as correction centres, religious institutions and health facility in-patients.

Population size

Refers to the total population count in the country or any geographical location based on the census reference night. It includes all those persons who were enumerated in households and institutions.

Population by age groups or specific age

This is the total count of the household population by a given age, age- groups or special age-groups. It excludes the non-household population.

Education characteristics/indicators

The indicators refer to specific age groups. The official school going age is 6-12 years for primary education, 13-18 years for secondary education and 19-24 years for tertiary education. However, the analysis includes the age-group 6-15 years to take into consideration those who start primary level at more than 6 years.

For those who have never been to school, we consider the age group 15 years and above on the assumption that by age 15, there are minimal chances for one joining school for the first time.

Illiteracy

This is defined as lack of the ability to read and write with understanding in any language. Persons aged 10 years and above who could not read and write responded (Codes 2, 3 and 4) to Question P21 of the Household Questionnaire. The objective of using this indicator is to shed light on the areas that need improvements in the delivery of the services.

Ownership of a birth certificate

Ownership includes all those persons (adults or children) who either had a Short Birth Certificate or a Long Birth Certificate during census enumeration. The analysis is based on specific age categories.

Parental survival and Orphanhood

Parental survival and orphanhood are derived variables which are based on two questions (P10 and P11), whether or not the biological mother/father of the respondent was still alive at the time of the census. Orphans are persons below the age of 18 who have lost any or both of their parents.

Disability

The questions P14 to P17 on functional difficulty are used to determine whether the person has a disability or not. It includes all persons aged 2 years and above. An individual is considered to be disabled if he/she has any one of the 4 questions with at least some difficulty.

Multiple disabilities refer to all persons who reported more than one functional difficulty.

Marriage and Child Bearing

Marital Status refers to all those persons who are living together and consider themselves as married. It includes all forms of consensual union whether legal or non-legal, religious or cultural or non-consensual union.

Employment

Questions on employment were eligible for all household population aged 10 years and above. Currently the age category for the working population 16 -64 years. The analysis is based on specific age groups of children 10-15 years, (other countries define a child as anyone below the age of 16, hence the age group 10-15 years).

Construction materials of the dwelling

The information is derived from the question on “materials used for the roof, floor and wall. Permanent floor materials include concrete, cement screed, tiles, wood, while permanent roof materials include roof tiles, iron sheets, asbestos and concrete.

Status of dwelling

The permanency nature of construction materials determines the status of the dwelling. The idea is to be able to classify a dwelling unit as temporary or permanent.

Access to community services

The choice of indicators is for those households that are beyond the 5 km radius for access to services (access to public/private schools, health facilities and a police station/post). The nearness of the service to the household does not take into consideration whether the services are utilized by the household or not.

Other environmental conditions – waste disposal

Any household was considered to have proper waste disposal if at the time of the census it disposed off solid waste using registered or unregistered waste vendors as well as using skip bins provided by the Municipal authority.

Owner occupied dwellings

These are disaggregated by household headship. The percentages for male and female headed households may not add up to 100. For instance among the female headed households, what proportion are owner occupied? Among the male headed households, what proportion are owner occupied?

Source of energy for lighting – electricity

In the household questionnaire, Question H14 had about four forms of electricity used for lighting (grid, generator, solar, community/thermal plant). Any household that indicated using any of the four forms was considered to have access to electricity.

Household based agricultural activities

A household engaged in agriculture is one which is engaged in any of the following:

Growing of any crops, or rearing animals or involved in bee keeping or forestry/tree growing, and any fish farming. Agricultural activities outside the district were not considered.

TABLE OF CONTENTS

FOREWORD	i
PREFACE.....	ii
ABOUT THE INDICATORS	iii
INTRODUCTION	1
1.1 General Information about Uganda	1
1.2 About the National Population and Housing Census 2014	1
1.3 National Highlights of the 2014 Census Results.....	2
AREA SPECIFIC PROFILES.....	18
KISORO DISTRICT.....	19
KISORO MUNICIPALITY CONSTITUENCY	28
BUFUMBIRA COUNTY EAST CONSTITUENCY	37
BUFUMBIRA COUNTY NORTH CONSTITUENCY	46
BUFUMBIRA COUNTY SOUTH CONSTITUENCY	55
APPENDICES	64
Appendix 1: Population by Sex and Type of Residence by District, Uganda 2014	65
Appendix 2: The Household Questionnaire and code list for the National Population and Housing Census 2014.....	68

LIST OF MAPS

- Map 1: Districts of Uganda as of 1st July 2016
- Map 2: Kisoro District Parliamentary Constituencies as of 1st July, 2016
- Map 3: Distribution of Population by Sub-county; Kisoro District, 2014
- Map 4: Percentage Distribution of Population Aged 6-12 Years Not In School; Kisoro District, 2014
- Map 5: Percentage Distribution of Youth Population aged 18-30 Years, Not In School and not working; Kisoro District, 2014
- Map 6: Percentage Distribution of Population aged 10-19 Years, Ever Married; Kisoro District, 2014
- Map 7: Percentage Distribution of Orphans aged 0-17 Years; Kisoro District, 2014
- Map 8: Percentage Distribution of Households within 5 Km and Over to the nearest Public Health Facility; Kisoro District, 2014
- Map 9: Percentage Distribution of Households without access to Safe Water; Kisoro District, 2014
- Map 10: Percentage Distribution of Households with no Toilet facility; Kisoro District, 2014
- Map 11: Percentage Distribution of Households having less than 2 meals a day; Kisoro District, 2014

INTRODUCTION

1.1 General Information about Uganda

Location and Size

Uganda is located in East Africa and lies across the equator, about 800 kilometres inland from the Indian Ocean. It lies between Latitude 1° 29' South and 4° 12' North of the Equator as well as Longitude 29° 34' East and 35° 0' East of Greenwich. The country is landlocked, bordered by Kenya in the East; South Sudan in the North; Democratic Republic of Congo in the West; Tanzania in the South; and Rwanda in South West. It has a total area of 241,551 square kilometres, of which the land area covers 200,523 square kilometres.

Administration

The country was divided into 116 districts (as at August/September 2014). The districts were further subdivided into 200 Counties, 1,378 Sub-counties and 6,495 Parishes. The role of these administrative units is to implement and monitor government programmes at the respective levels. Overtime, the administrative units have been sub-divided with the aim of easing administration and improving the delivery of services.

1.2 About the National Population and Housing Census 2014

The overall objective of the National Population and Housing Census (NPHC) 2014 was to provide data that are required for planning at all levels. The NPHC 2014 had three distinct phases namely, the Preparatory Phases, the Enumeration Phase and the Post Enumeration Phase.

The preparatory work for the Census 2014 started in 2008 with development of the overall strategy of undertaking the census. Other preparatory activities included development of the questionnaires, undertaking of the census mapping, conducting the Pilot Census, carrying out the census advocacy and publicity and other administrative support services.

The enumeration phase included recruitment and training of field staff, delivery of enumeration materials, conducting the main census enumeration and retrieval of materials. The census activities in the district were conducted under the overall responsibility of the Chief Administrative Officers (CAOs) or the Executive Director in the case of Kampala Capital City Authority (KCCA). All field staff underwent mandatory ten (10) day training on Census concepts and procedures.

The Census Reference Night was the night of 27th August 2014 and the enumeration was conducted on a de facto basis. The enumeration started on 28th August and continued to 7th September 2014. The Enumerators moved from household to household within the assigned

Enumeration Areas (EAs) and administered the Census questionnaire to the Head of household or any other assigned household member through face to face interviews.

The data processing was centrally managed at the Bureau offices. The filled questionnaires were captured with scanning technology and the information extracted using automatic character recognition.

Data quality assurance enhances credibility, usability and utility of data. The Post Enumeration Survey (PES) was used as one of the tools to evaluate the quality of the census data through testing the completeness of coverage and accuracy. The PES enumeration was undertaken in October/November 2014, and it covered 800 EAs distributed in all the districts and Kampala Capital City Authority (KCCA).

1.3 National Highlights of the 2014 Census Results

The results of the NPHC 2014 will be published in phases. The Provisional Census Results were disseminated in November 2014. These gave the number of households and the population by sex for administrative areas down to sub-county level. The first set of the final results of the Census 2014 were published in the Main Report which was released in March 2016. The report includes information on the population size and distribution as well as characteristics of the population and the dwellings they live in. The results showed that the total population of Uganda in 2014 was 34.6 million persons as shown in Table 1.

Between 2002 and 2014, the population increased from 24.2 million to 34.6million. This implied average growth rate of 3.0 percent per annum.

Table 1: Population size and Population Growth Rates, Uganda, 1969-2014

Census year	Male	Female	Total	Inter-censual Period	Average Annual Growth Rate (%)
1969	4,812,447	4,722,604	9,535,051		
1980	6,259,837	6,376,342	12,636,179	1969-1980	2.7
1991	8,185,747	8,485,558	16,671,705	1980-1991	2.5
2002	11,824,273	12,403,024	24,227,297	1991-2002	3.2
2014	17,060,832	17,573,818	34,634,650	2002-2014	3.0

The distribution of the population among the districts is given in Appendix Table 1. Wakiso district had a population of nearly two (2) million, accounting for about six percent of the total population, while some districts were less populous, Kalangala district being the smallest with a population of 53,406 persons. As of 2016, Uganda had a total of 259 urban centres with a total

urban population of 7.5 million persons. Thus, 20.2 percent of the total population lived in urban areas. Kampala Capital City was the most populous urban centre with 1.5 million persons.

Table 2 gives the distribution of the population by age. The Table shows that the population of Uganda is quite young, with the proportion of children (below 15 years of age) being 47.9 percent, while the 'Older persons' (aged 60 years and above) constituted only 2.9 percent.

Table 2: Population Distribution by Age, Sex, Residence, and Population Type, Uganda, 2014

Age	Sex		Residence		Population Type		Total
	Male	Female	Rural	Urban	Household	Institutional	
0-4	3,173,950	2,957,078	4,950,513	1,180,515	6,107,155	23,873	6,131,028
5-9	2,834,456	2,717,222	4,557,328	994,350	5,532,230	19,448	5,551,678
10-14	2,462,789	2,457,654	4,024,478	895,965	4,850,926	69,517	4,920,443
15-19	1,917,797	2,038,836	3,052,854	903,779	3,850,134	106,499	3,956,633
20-24	1,442,455	1,743,137	2,263,734	921,858	3,093,846	91,746	3,185,592
25-29	1,143,467	1,342,709	1,743,019	743,157	2,434,180	51,996	2,486,176
30-34	908,447	1,043,292	1,429,283	522,456	1,914,351	37,388	1,951,739
35-39	726,355	809,482	1,148,883	386,954	1,512,237	23,600	1,535,837
40-44	617,034	655,383	991,874	280,543	1,252,338	20,079	1,272,417
45-49	452,081	469,043	728,958	192,166	909,783	11,341	921,124
50-54	371,126	436,977	657,004	151,099	797,368	10,735	808,103
55-59	224,765	255,519	394,952	85,332	475,744	4,540	480,284
60-64	195,283	244,770	369,504	70,549	434,218	5,835	440,053
65-69	136,107	165,043	257,208	43,942	299,351	1,799	301,150
70-74	115,862	161,374	237,097	40,139	273,582	3,654	277,236
75-79	69,095	81,378	128,636	21,837	149,567	906	150,473
80-84	51,871	79,398	110,736	20,533	127,984	3,285	131,269
85-89	21,572	30,204	43,246	8,530	50,735	1,041	51,776
90-94	15,125	22,046	29,989	7,182	34,339	2,832	37,171
95 and above	18,212	26,256	37,186	7,282	41,231	3,237	44,468
Total	16,897,849	17,736,801	27,156,482	7,478,168	34,141,299	493,351	34,634,650

Characteristics of the Population

About 87 percent of the boys and girls of primary school going age (6-12 years) were attending school, while about 1 in every 10 children of primary school going age children had never been school. The Illiteracy status Rate was 72 percent among persons aged 10 years and above. Out of the 17.7 million persons of working age (aged 14 to 64 years), 13.8 million (78 percent) were working in the (Labour Force), with the most common occupation being subsistence farming (65%).

Vulnerability can be assessed at personal and household level. At personal level, vulnerability is a state of being in which a person is likely to be in a risky situation, suffering significant physical, emotional, or mental harm that may result in his/her human rights not being fulfilled (MoGLSD, 2004). The 2014 Census measured some of the dimensions of Child Vulnerability. The results show high levels of vulnerability as highlighted below;

- One in every eight (12.5%) of children aged 6 – 12 Years were not in school;
- Two out of every 25 (8%) children less than 18 years of age were orphaned;
- One in every 16 (6%) of the girls aged 12 to 17 years had already given birth;
- One in every 15 (6.5%) of the girls aged 12 – 17 had ever been in a marriage union;
- Seven out of every 10 Children (70%) aged less than five years did not have a Birth certificate.

There was a general improvement in the demographics of the population with the Total Fertility Rate falling to 5.8 children per woman while the infant Mortality Rate decreased to 53 deaths per 1,000 live births. The Life Expectancy at Birth also increased to 63.3 years

Characteristics of the Households

The household population consisted of (99 percent of the total population.) The Census 2014 enumerated a total of 7.3 million households with a population of 34.1 million .This gave an Average Household Size of 4.7.

The 'Tadooba' remained the most common source of lighting being used by 52 percent of the households. Only one in every five households (20%) had access to electricity. On the other hand, Wood fuel was the most common fuel used for cooking, with only six percent (one in every 16) of the households using other fuels. Sanitation remains a challenge with only thirty percent of the households with unimproved toilet facilities. About 600,000 households did not have any toilet facility at all.

The majority of the households (69 percent) derived their livelihood from subsistence farming. Only 27% of the households depended on earned income. One in every nine households (11%) were having only one meal per day (for adults). Some of the households (11%) received remittances from abroad in cash or in kind. More than two thirds of the households (69%) had at least one member owning a Mobile phone. Ownership of a Mobile among persons aged 10

years and above was at 38 percent. The radio remains a dominant source of information and about 60 percent of the households owned a radio.

Housing Conditions

The housing sector recorded a general improvement. Overall, 67 percent of households in Uganda resided in detached dwellings. However, nearly half (47%) households resided in dwellings with only one room for sleeping. There was also significant improvement in the materials used for construction of the dwellings. About 44% of the households resided in dwellings constructed with permanent wall material. The equivalent shares for roof and floor were 70 and 34 percent respectively.

Agricultural Activities

Agriculture has remained a dominant sector in the economy. The Census revealed that a total of 5.8 million households engage in agriculture. More than two thirds (69 percent) of households derived their livelihoods from subsistence farming as the main source of earning. In terms of employment, the majority of the working population (65 percent) were subsistence farmers.

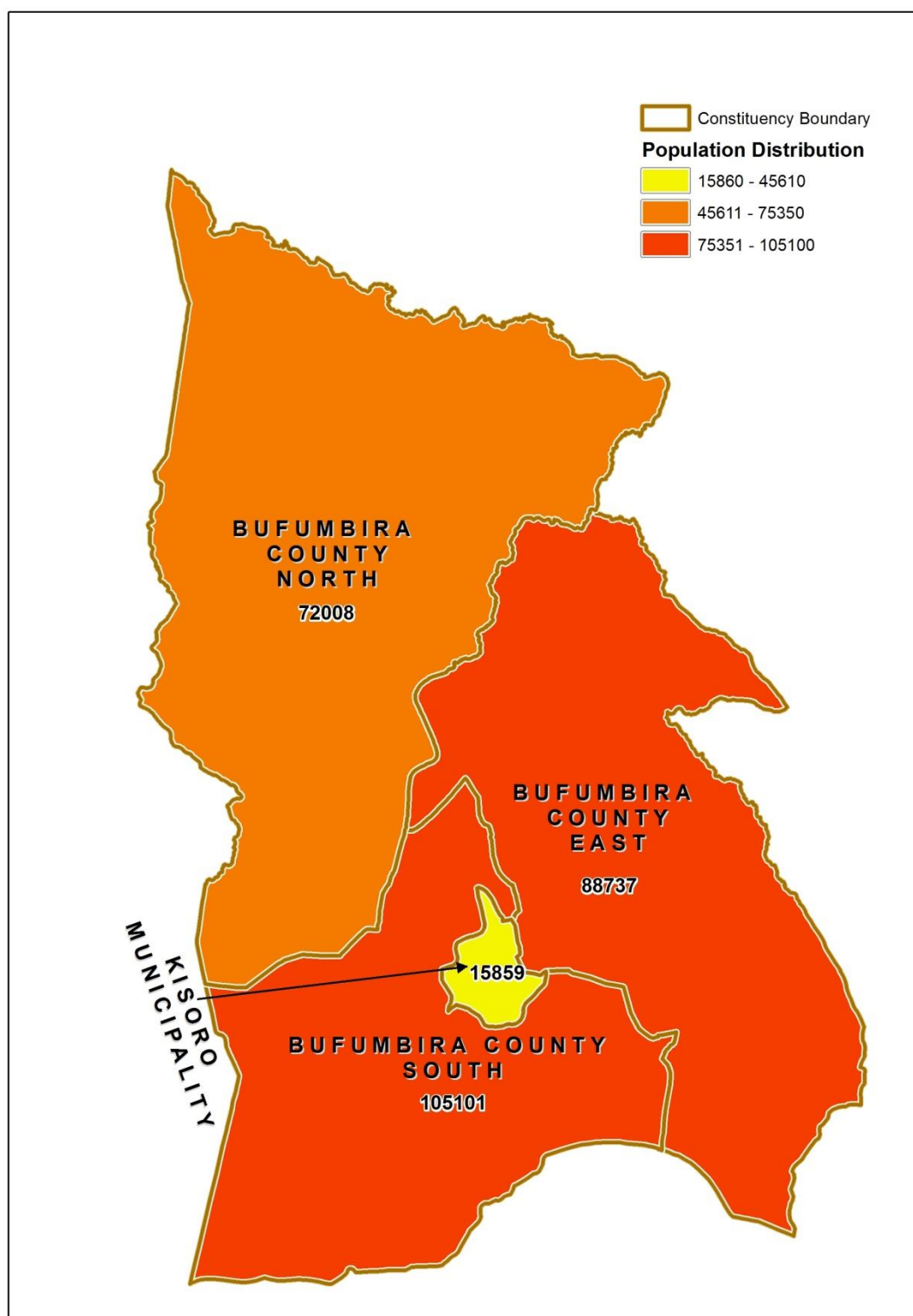
POPULATION SIZE

Table 3: Total population by age group and sex, Kisoro District, 2014

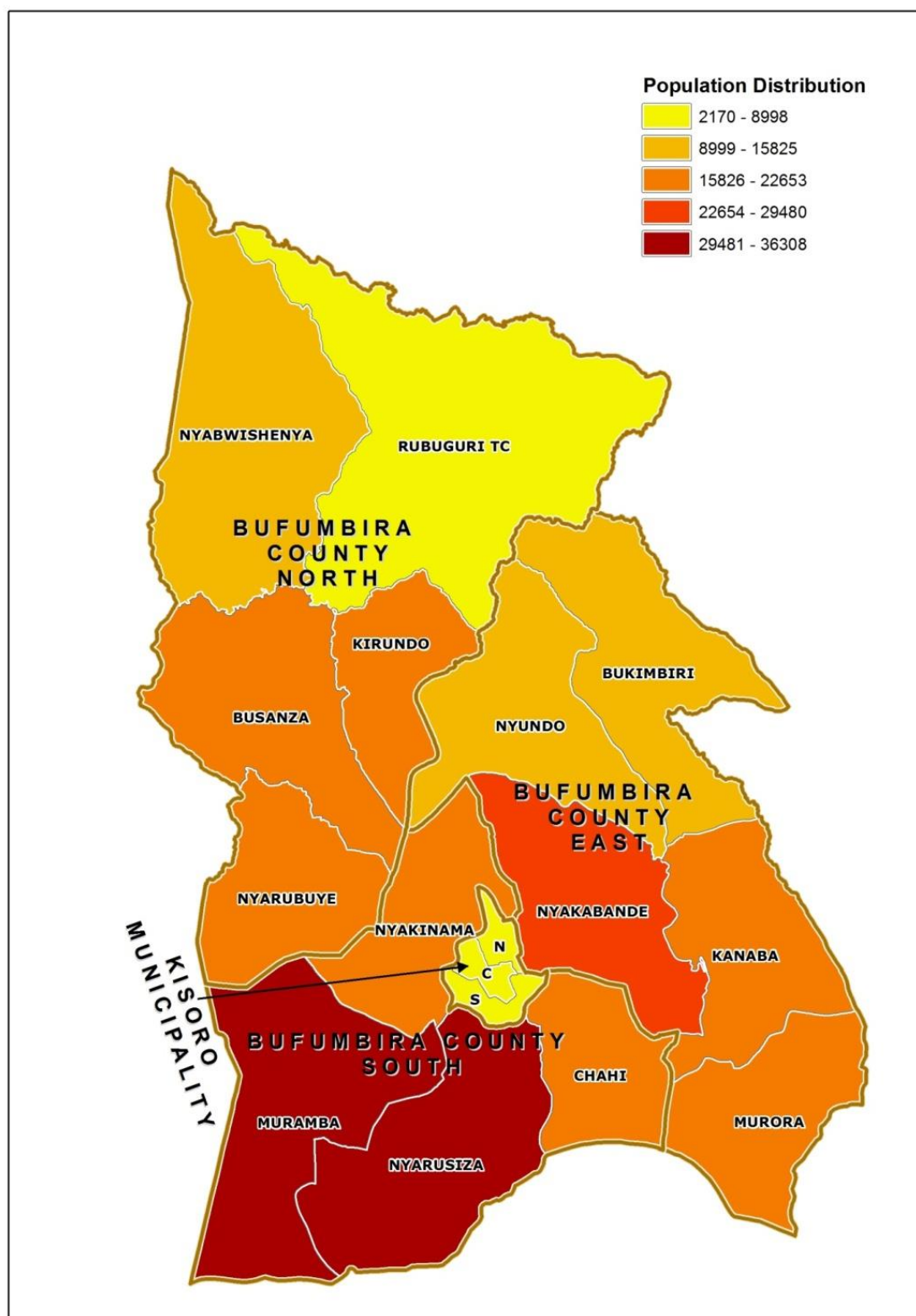
Age group	Male	Female	Total
0-9	50,102	48,406	98,508
10-19	34,418	38,394	72,812
20-39	24,504	41,670	66,174
40-59	11,177	18,048	29,225
60+	5,854	9,132	14,986
Total	126,055	155,650	281,705

[illegible]

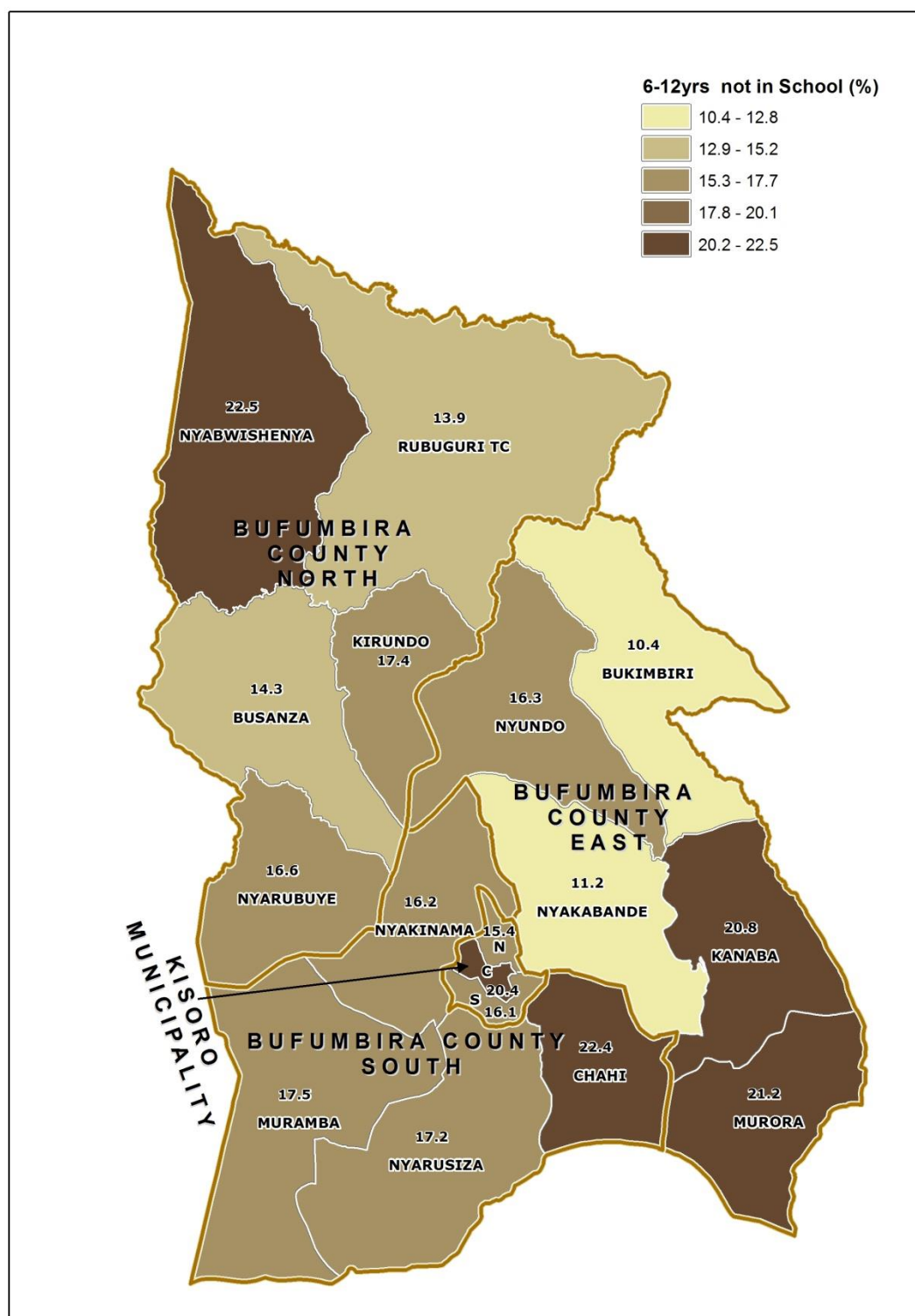
Map 2: Kisoro District Parliamentary Constituencies as of 1st July, 2016



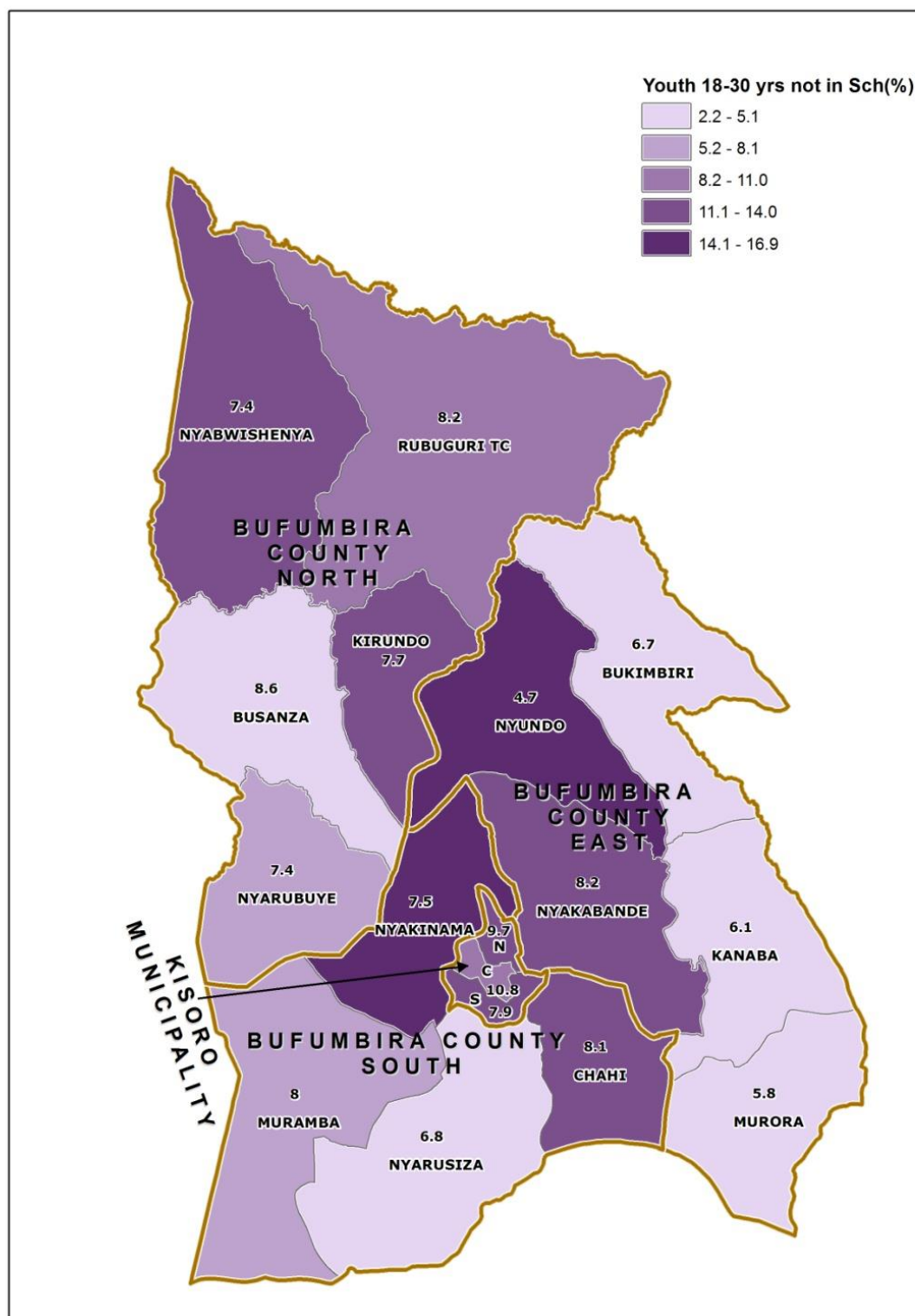
Map 3: Distribution of Population by Sub-county; Kisoro District, 2014



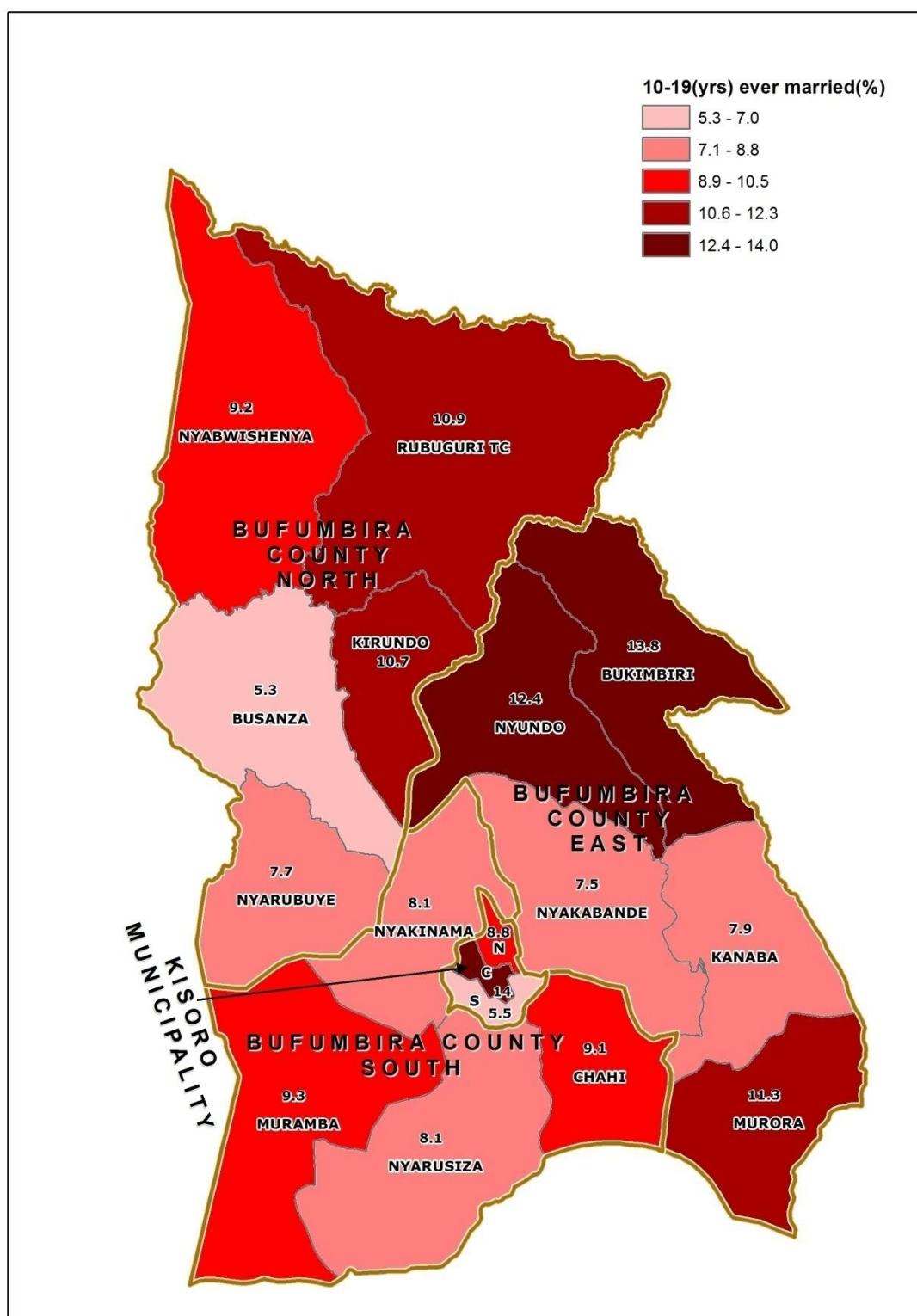
Map 4: Percentage Distribution of Population Aged 6-12 Years Not In School; Kisoro District, 2014



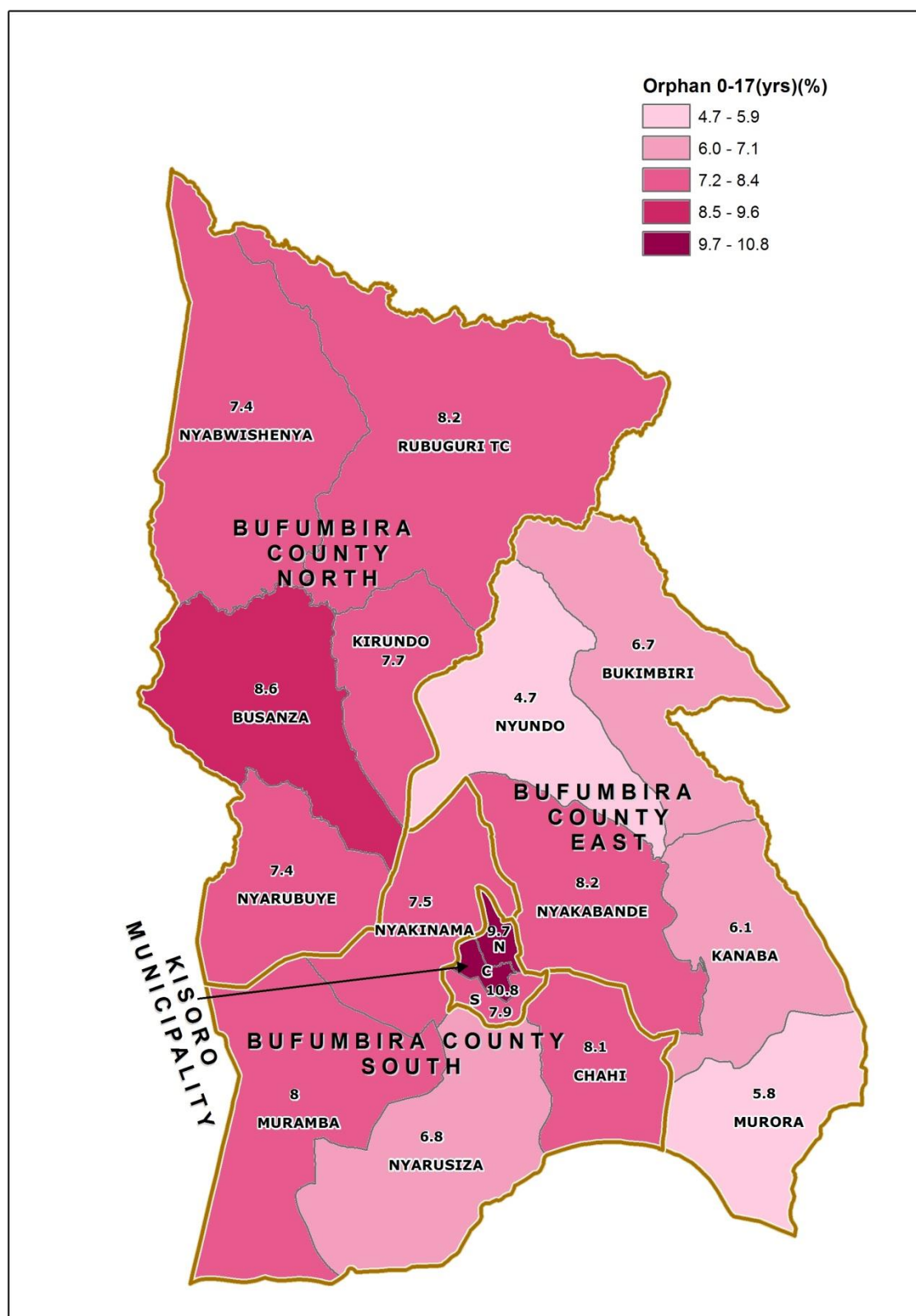
Map 5: Percentage Distribution of Youth Population aged 18-30 Years, Not In School and Not working; Kisoro District, 2014



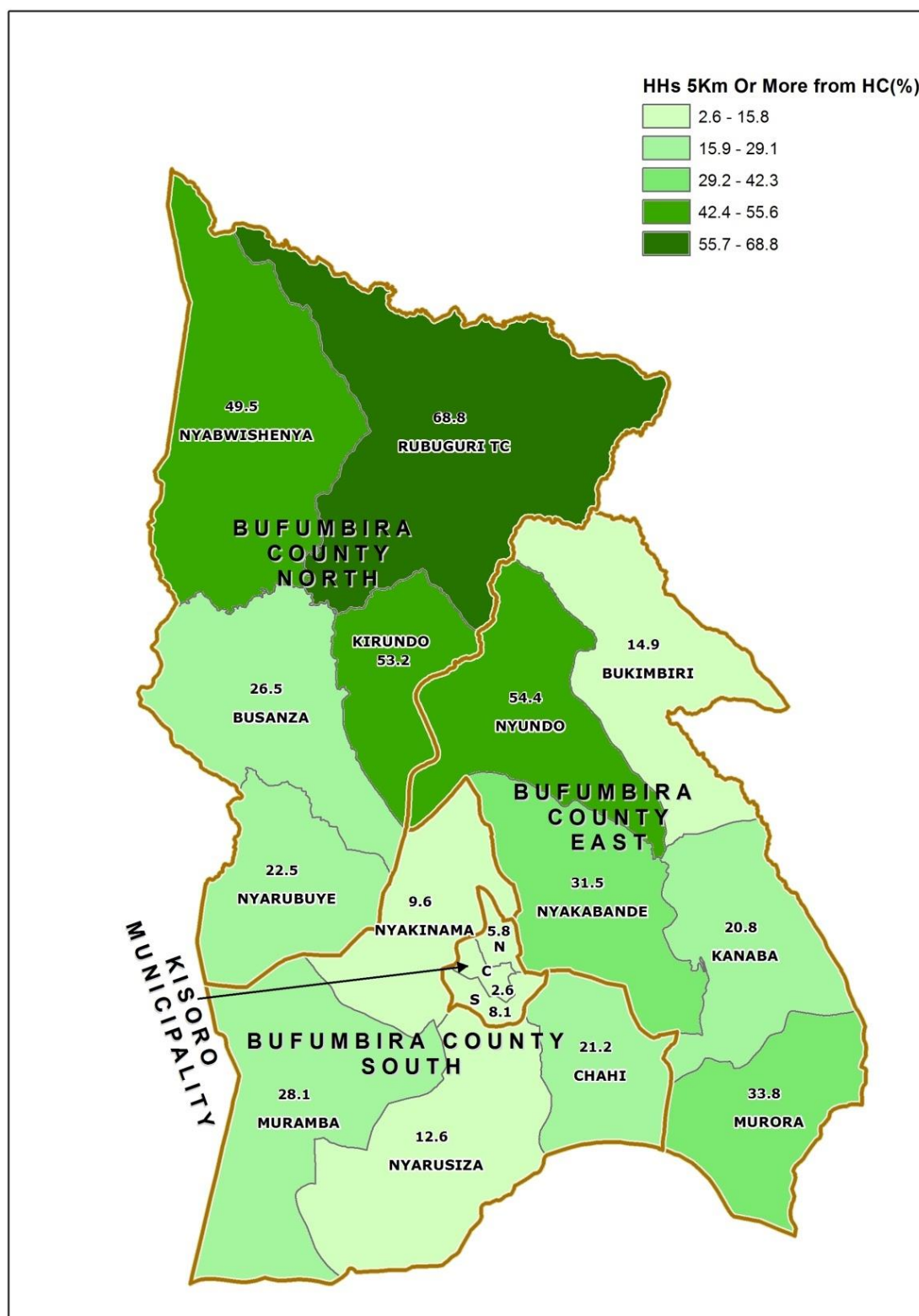
Map 6: Percentage Distribution of Population aged 10-19 Years, Ever Married; Kisoro District, 2014



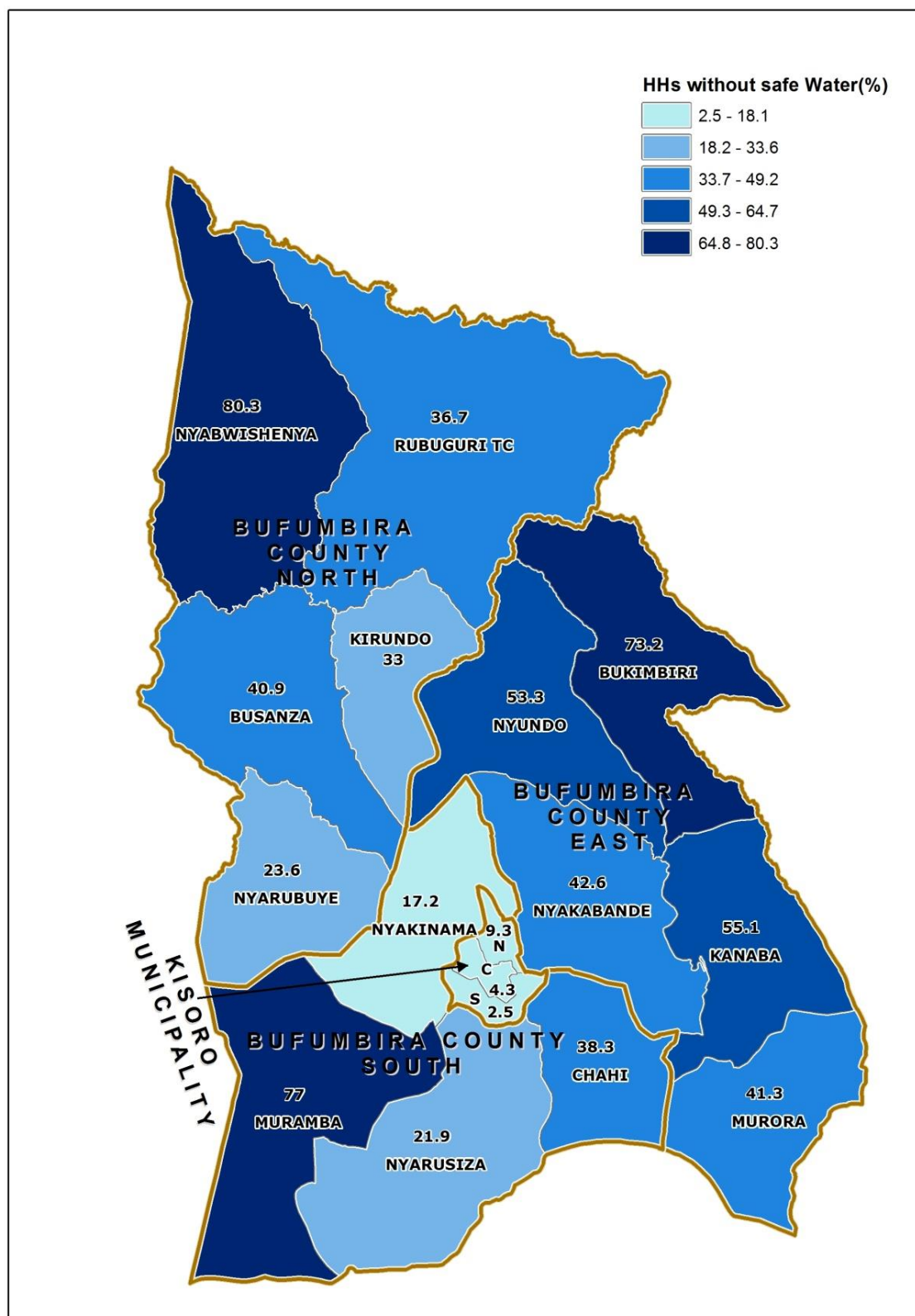
Map 7: Percentage Distribution of Orphans aged 0-17 Years; Kisoro District, 2014



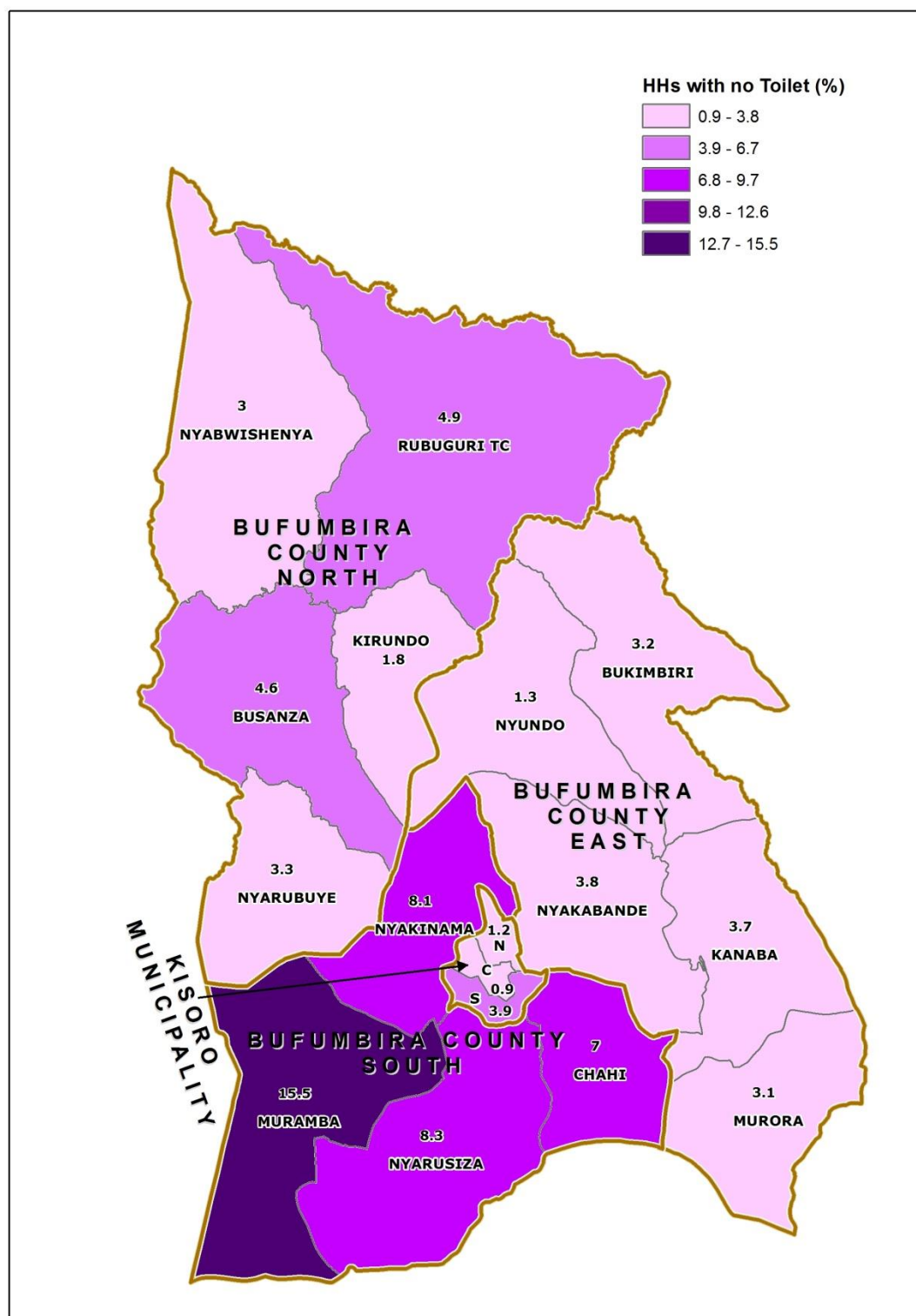
**Map 8: Percentage Distribution of Households 5 Km and over, to the nearest Public Health Facility;
Kisoro District, 2014**



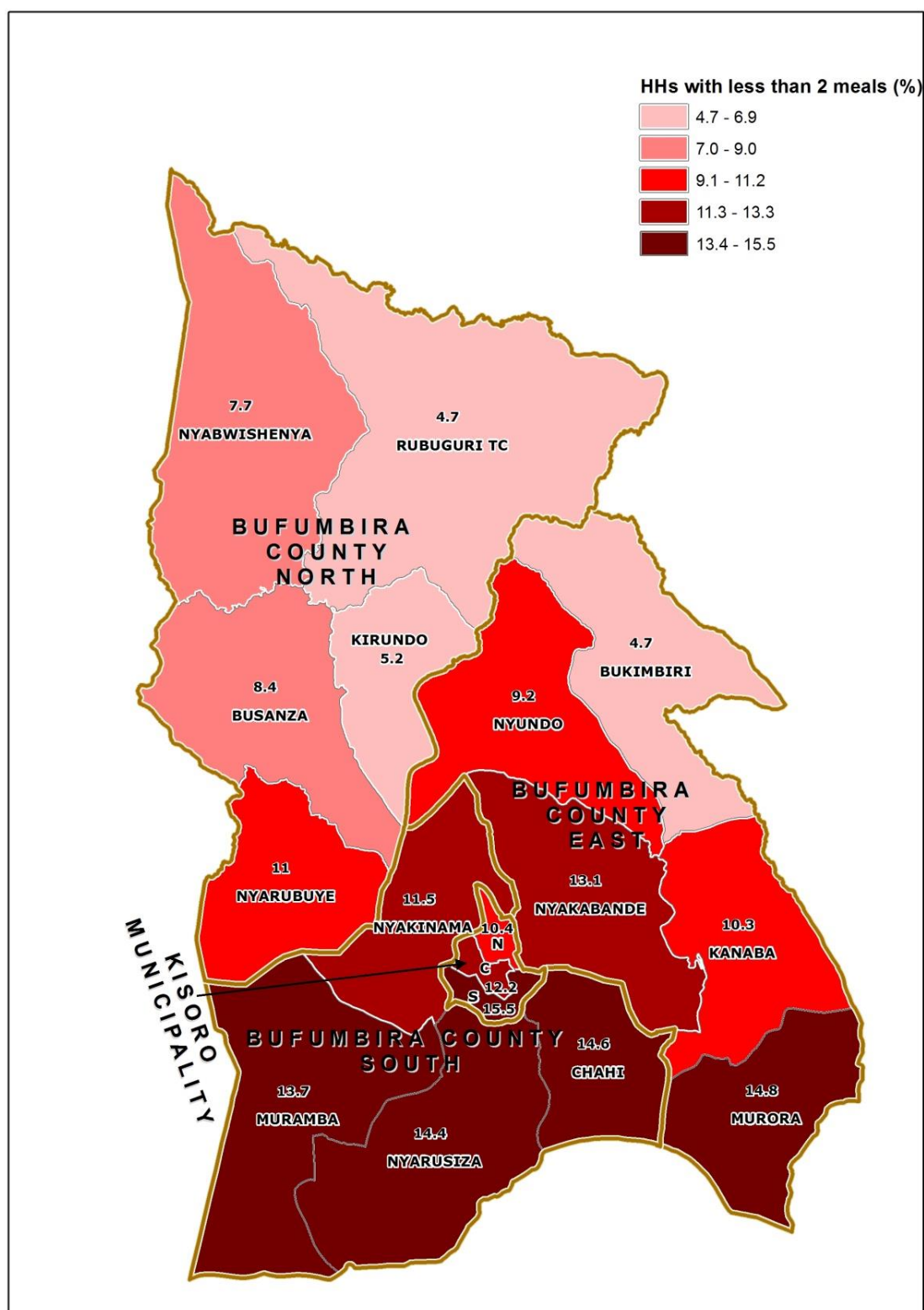
Map 9: Percentage Distribution of Households without access to Safe Water; Kisoro District, 2014



Map 10: Percentage Distribution of Households with no Toilet facility; Kisoro District, 2014



Map 11: Percentage Distribution of Households having less than 2 meals a day; Buikwe District, 2014



AREA SPECIFIC PROFILES

KISORO DISTRICT

LIST OF TABLES

- 1 Population
- 2 Education
- 3 Illiteracy status
- 4 Ownership of a Birth Certificate
- 5 Parental Survival and Orphanhood
- 6 Disability
- 7 Marriage and Child Bearing
- 8 Working Status
- 9 Use of ICT
- 10 Housing Conditions
- 11 Access to Community Services
- 12 Household Health and Hygiene
- 13 Household Assets
- 14 Other Household Characteristics
- 15 Household Based Agricultural Activities

1: POPULATION

1.1: Population Size	Number	Percent
Total population	281,705	
Total male population	126,055	44.7
Total female population	155,650	55.3
Sex ratio (males per 100 females)	81.0	
1.2: Households	Number	Percent
Total households	62,248	
Households headed by males	48,504	77.9
Households headed by females	13,744	22.1
Households headed by children (aged 10-17 years)	150	0.2
Households headed by youth (aged 18-30 years)	15,916	25.6
Households headed by older persons (aged 60 years and above)	12,462	20.0
1.3: Population by Age groups	Number	Percent
Population aged 0-17 years	159,264	56.8
Population aged 18-30 years	56,350	20.1
Population aged 31-59 years	49,768	17.8
Population aged 60 years and over	14,922	5.3
1.4: Population by Special Age groups	Number	Percent
Population aged Less than one Year	10,630	3.8
Population aged 0-4 Years	51,843	18.5
Population aged 0-8 Years	90,189	32.2
Population aged 2-8 Years	70,122	25.0
Population aged 2-17 Years	139,197	49.7
Population aged 6-12 Years	61,164	21.8
Population aged 6-15 Years	83,727	29.9
Population aged 10-15 Years	46,991	16.8
Population aged 10-17 Years	60,948	21.7
Population aged 15-24 Years	54,353	19.4
Population aged 16-64 Years	124,795	44.5
Population aged 15-29 Years	72,005	25.7
Population aged 2 Years and Over	260,237	92.8
Population aged 10 Years and Over	181,988	64.9
Population aged 15 Years and Over	141,683	50.5
Population aged 18 Years and Over	121,040	43.2
Population aged 20 Years and Over	109,638	39.1
Population aged 65 Years and over	10,202	3.6

2: EDUCATION

2.1: Non School attendance of	Number	Percent
Persons aged 6-15 years not attending school	12,660	15.1
Males aged 6-15 years not attending school	6,349	15.3
Females aged 6-15 years not attending school	6,311	14.9
2.2: Persons attending Primary school	Number	Percent
Persons aged 6-12 years attending primary school	50,770	83.0
Males aged 6-12 years attending primary school	25,096	82.4
Females aged 6-12 years attending primary school	25,674	83.6
2.3: Persons attending Secondary school	Number	Percent
Persons aged 13-18 years attending secondary school	11,713	27.0
Males aged 13-18 years attending secondary school	5,874	28.9
Females aged 13-18 years attending secondary school	5,839	25.2
2.4: Persons not in School and Highest Level Completed is below S.4	Number	Percent
Persons aged 15 years and above whose highest level of education completed is below S.4	68,152	86.7
Males aged 15 years and above whose highest level of education completed is below S.4	28,954	82.3
Females aged 15 years and above whose highest level of education completed is below S.4	39,198	90.3
2.5: Persons not in School and Highest Level Completed is "O" Level	Number	Percent
Persons aged 18 years and above whose highest level of education completed is "O" level (S.4)	4,088	3.4
Males aged 18 years and above whose highest level of education completed is "O" level (S.4)	2,293	5.0
Females aged 18 years and above whose highest level of education completed is "O" level (S.4)	1,795	2.4
2.6: Persons not in School and Highest Level Completed is "A" Level	Number	Percent
Persons aged 20 years and above whose highest level of education completed is "A" level (S.6)	1,187	1.1
Males aged 20 years and above whose highest level of education completed is "A" level (S.6)	833	2.0
Females aged 20 years and above whose highest level of education completed is "A" level (S.6)	354	0.5

3: ILLITERACY STATUS

3.1: Persons aged 18 years and above	Number	Percent
Persons aged 18 years and above who are illiterate	48,453	40.0
Males aged 18 years and above who are illiterate	11,669	25.4
Females aged 18 years and above who are illiterate	36,784	48.9
3.2: Other age groups	Number	Percent
Persons aged 10-17 years who are illiterate	14,923	24.5
Persons aged 18-30 years who are illiterate	13,429	23.8
Persons aged 60 years and above who are illiterate	10,954	73.4

4: OWNERSHIP OF A BIRTH CERTIFICATE

4.1: Children with birth certificates	Number	Percent
Children less than 1 year who have a birth certificate	2,744	25.8
Children less than 5 years who have a birth certificate	14,826	28.6
Children 0-8 years who have a birth certificate	26,361	29.2
Children 0-17 years who have a birth certificate	45,671	29.9

5: PARENTAL SURVIVAL AND ORPHANHOOD

5.1: Children 0-8 years	Number	Percent
Children 0-8 years who have lost one parent	3,006	3.3
Children 0-8 years who have lost both parents	162	0.2
Children 0-8 years who have lost at least a parent (total number of orphans)	3,168	3.5
Children 0-8 years who have both parents	87,021	96.5
5.2: All children (0-17 years)	Number	Percent
Children 0-17 years who have lost one parent	10,856	6.8
Children 0-17 years who have lost both parents	863	0.5
Children 0-17 years who have lost at least a parent (total number of orphans)	11,719	7.4
Children 0-17 years who have both parents	147,545	92.6

6: DISABILITY

6.1: Persons with a disability	Number	Percent
Persons aged 2 years and above with a disability	32,138	12.3
Persons aged 2 years and above with a seeing disability	17,688	6.8
Persons aged 2 years and above with a hearing disability	9,911	3.8
Persons aged 2 years and above with a walking disability	13,041	5.0
Persons aged 2 years and above with a remembering disability	16,002	6.1
Persons aged 2 years and above with multiple disabilities	12,289	40.4
Children aged 2-17 years with a disability	5,367	3.9
Youth aged 18-30 years with a disability	4,735	8.4
Older persons aged 60 years and above with a disability	9,375	62.8

7: MARRIAGE AND CHILDBEARING

7.1: Marital status of the population	Number	Percent
Persons aged 10 years and above who are married	53,112	49.8
Persons aged 18 years and above who are married	51,843	69.0
Females aged 50 years and above who are widowed	5,891	35.5
Females aged 10-17 years who have ever been married	1,432	4.5
Females aged 10-19 years who have ever been married	3,459	9.1
7.2: Females who have had a birth	Number	Percent
Females aged 12-17 years who have given birth	1,410	6.0
Females aged 12-19 years who have given birth	2,811	9.3

8: WORKING STATUS

8.1: Working persons	Number	Percent
Persons aged 10-15 years who were working	18,456	39.3
Persons aged 10-17 years who were working	26,183	43.0
Persons aged 18-30 years who were working	46,144	81.9
Persons aged 16-64 years who were working	103,799	83.2
Persons aged 18 years and above who were working	102,004	84.3
Persons aged 60 years and above who were working	9,967	66.8
8.2: Youths Not working and not in school		
Youths (Persons aged 18-30 years) who were neither working nor in school	4,514	8.0

9: USE OF ICT

9.1: Mobile phone ownership (10 years and above)	Number	Percent
Persons aged 10 years and above that own at least one mobile phone	59,459	32.7
Males aged 10 years and above that own at least one mobile phone	29,599	39.3
Females aged 10 years and above that own at least one mobile phone	29,860	28.0
9.2: Mobile phone ownership (18-30 years)	Number	Percent
Persons aged 18-30 years and above that own at least one mobile phone	29,087	51.6
Males aged 18-30 years and above that own at least one mobile phone	13,314	62.9
Females aged 18-30 years and above that own at least one mobile phone	15,773	44.8
9.3: Internet Usage (10 years and above)	Number	Percent
Persons aged 10 years and above that use internet	8,207	4.5
Males aged 10 years and above that use internet	4,993	6.6
Females aged 10 years and above that use internet	3,214	3.0
9.4: Internet Usage (18-30 years)	Number	Percent
Persons aged 18-30 years that use internet	4,609	8.2
Males aged 18-30 years that use internet	2,755	13.0
Females aged 18-30 years that use internet	1,854	5.3

10: HOUSING CONDITIONS

10.1: Construction Materials For the Dwelling Units	Number	Percent
Households living in dwelling units constructed using permanent roof materials	61,636	99.0
Households living in dwelling units constructed using permanent wall materials	17,072	27.4
Households living in dwelling units constructed using permanent floor materials	11,146	17.9
10.2: Status of Dwelling Units	Number	Percent
Households living in semi-permanent dwelling units	52,826	84.9
Households living in temporary dwelling units	572	0.9

11: ACCESS TO COMMUNITY SERVICES

11.1: Access to a Primary school	Number	Percent
Households that are 5 km or more to the nearest primary school, <u>whether public or private</u>	5,068	8.1
Households that are 5 km or more to the nearest <u>public</u> primary school	7,113	11.4
11.2: Access to a Secondary school	Number	Percent
Households that are 5 km or more to the nearest secondary school, <u>whether public or private</u>	21,754	34.9
Households that are 5 km or more to the nearest <u>public</u> secondary school	27,840	44.7
11.3: Access to a Health Facility	Number	Percent
Households that are 5 km or more to the nearest health facility, <u>whether public or private</u>	13,339	21.4
Households that are 5 km or more to the nearest <u>public</u> health facility	16,366	26.3
11.4: Access to a Police post /Police station	Number	Percent
Households that are 5 km or more to the nearest Police Post/Police Station	22,454	36.1

12: HOUSEHOLD HEALTH AND HYGIENE

12.1:Ownership of Mosquito nets	Number	Percent
Households that own at least a mosquito net	59,742	96.0
Households that own at least a mosquito net that was received free (Government /NGO)	59,124	99.0
12.2: Source Of Water For Drinking	Number	Percent
Households that have access to piped water	20,988	33.7
Households that use a bore hole	993	1.6
12.3:Ownership of a Toilet facility	Number	Percent
Households without any toilet facility	2,560	4.1
12.4: Other environmental conditions	Number	Percent
Households that <u>properly</u> dispose off solid waste	8,339	13.4
Households which are not living in decent dwellings	61,462	98.7

13: HOUSEHOLD ASSETS

13.1: Owner occupied Dwellings	Number	Percent
Households that are owner occupied	57,460	92.3
Male headed households that are owner occupied	44,727	92.2
Female headed households that are owner occupied	12,733	92.6
13.2: Movable Assets	Number	Percent
Households that own a television	1,895	3.0
Households that own a computer	1,348	2.2
Households that own a bicycle	11,789	18.9
Households that own a radio	39,624	63.7

14: OTHER HOUSEHOLD CHARACTERISTICS

14.1: Main source of information	Number	Percent
Households whose main source of information is a radio	40,875	65.7
Households whose main source of information is a community announcer	2,217	3.6
Households whose main source of information is a telephone	1,285	2.1
14.2: Household Economy and Welfare	Number	Percent
Households that received remittances from abroad in the last 12 months	6,357	10.2
Households where any member possesses a bank account	11,576	18.6
Households that depend on subsistence farming as a main source of livelihood	53,664	86.2
Households with at least one member engaged in a non-agricultural household based enterprise	29,446	91.5
Households where (members aged 5 years and above) consume less than two meals in a day	7,089	11.4
14.3: Source of Energy for lighting	Number	Percent
Households that have access to electricity	4,704	7.6
Households that use Tadooba for lighting	40,914	65.7

15: HOUSEHOLD BASED AGRICULTURAL ACTIVITIES

15.1: Household based Agricultural activities	Number	Percent
Households engaged in crop growing	56,869	91.4
Households engaged in maize growing	38,412	61.7
Households engaged in coffee growing	111	0.2
Households engaged in growing of beans	52,167	83.8
Households engaged in growing of millet	2,731	4.4
Households engaged in growing of sweet potatoes	27,111	43.6
Households engaged in growing of matooke	3,548	5.7
Households engaged livestock farming	36,910	59.3
Households engaged in either crop growing or livestock farming	57,721	92.7

KISORO MUNICIPALITY CONSTITUENCY

LIST OF TABLES

1	Population
2	Education
3	Illiteracy status
4	Ownership of a Birth Certificate
5	Parental Survival and Orphanhood
6	Disability
7	Marriage and Child Bearing
8	Working Status
9	Use of ICT
10	Housing Conditions
11	Access to Community Services
12	Household Health and Hygiene
13	Household Assets
14	Other Household Characteristics
15	Household Based Agricultural Activities

1: POPULATION

1.1: Population Size	Number	Percent
Total population	15,859	
Total male population	7,465	47.1
Total female population	8,394	52.9
Sex ratio (males per 100 females)	88.9	
1.2: Households	Number	Percent
Total households	4,105	
Households headed by males	3,014	73.4
Households headed by females	1,091	26.6
Households headed by children (aged 10-17 years)	23	0.6
Households headed by youth (aged 18-30 years)	1,309	31.9
Households headed by older persons (aged 60 years and above)	535	13.0
1.3: Population by Age groups	Number	Percent
Population aged 0-17 years	7,803	49.2
Population aged 18-30 years	4,256	26.8
Population aged 31-59 years	3,159	19.9
Population aged 60 years and over	641	4.0
1.4: Population by Special Age groups	Number	Percent
Population aged Less than one Year	509	3.2
Population aged 0-4 Years	2,458	15.5
Population aged 0-8 Years	4,266	26.9
Population aged 2-8 Years	3,269	20.6
Population aged 2-17 Years	6,806	42.9
Population aged 6-12 Years	2,926	18.5
Population aged 6-15 Years	4,114	25.9
Population aged 10-15 Years	2,363	14.9
Population aged 10-17 Years	3,137	19.8
Population aged 15-24 Years	3,556	22.4
Population aged 16-64 Years	8,389	52.9
Population aged 15-29 Years	5,009	31.6
Population aged 2 Years and Over	14,862	93.7
Population aged 10 Years and Over	11,193	70.6
Population aged 15 Years and Over	9,174	57.8
Population aged 18 Years and Over	8,056	50.8
Population aged 20 Years and Over	7,278	45.9
Population aged 65 Years and over	441	2.8

2: EDUCATION

2.1: Non School attendance of	Number	Percent
Persons aged 6-15 years not attending school	550	13.4
Males aged 6-15 years not attending school	310	15.3
Females aged 6-15 years not attending school	240	11.5
2.2: Persons attending Primary school	Number	Percent
Persons aged 6-12 years attending primary school	2,428	83.0
Males aged 6-12 years attending primary school	1,184	81.4
Females aged 6-12 years attending primary school	1,244	84.5
2.3: Persons attending Secondary school	Number	Percent
Persons aged 13-18 years attending secondary school	879	36.2
Males aged 13-18 years attending secondary school	414	35.9
Females aged 13-18 years attending secondary school	465	36.5
2.4: Persons not in School and Highest Level Completed is below S.4	Number	Percent
Persons aged 15 years and above whose highest level of education completed is below S.4	3,882	62.9
Males aged 15 years and above whose highest level of education completed is below S.4	1,748	59.2
Females aged 15 years and above whose highest level of education completed is below S.4	2,134	66.3
2.5: Persons not in School and Highest Level Completed is "O" Level	Number	Percent
Persons aged 18 years and above whose highest level of education completed is "O" level (S.4)	660	8.2
Males aged 18 years and above whose highest level of education completed is "O" level (S.4)	348	9.8
Females aged 18 years and above whose highest level of education completed is "O" level (S.4)	312	6.9
2.6: Persons not in School and Highest Level Completed is "A" Level	Number	Percent
Persons aged 20 years and above whose highest level of education completed is "A" level (S.6)	285	3.9
Males aged 20 years and above whose highest level of education completed is "A" level (S.6)	170	5.3
Females aged 20 years and above whose highest level of education completed is "A" level (S.6)	115	2.8

3: ILLITERACY STATUS

3.1: Persons aged 18 years and above	Number	Percent
Persons aged 18 years and above who are illiterate	1,903	23.6
Males aged 18 years and above who are illiterate	574	16.2
Females aged 18 years and above who are illiterate	1,329	29.5
3.2: Other age groups	Number	Percent
Persons aged 10-17 years who are illiterate	574	18.3
Persons aged 18-30 years who are illiterate	638	15.0
Persons aged 60 years and above who are illiterate	367	57.3

4: OWNERSHIP OF A BIRTH CERTIFICATE

4.1: Children with birth certificates	Number	Percent
Children less than 1 year who have a birth certificate	225	44.2
Children less than 5 years who have a birth certificate	1,170	47.6
Children 0-8 years who have a birth certificate	2,027	47.5
Children 0-17 years who have a birth certificate	3,503	47.1

5: PARENTAL SURVIVAL AND ORPHANHOOD

5.1: Children 0-8 years	Number	Percent
Children 0-8 years who have lost one parent	157	3.7
Children 0-8 years who have lost both parents	9	0.2
Children 0-8 years who have lost at least a parent (total number of orphans)	166	3.9
Children 0-8 years who have both parents	4,100	96.1
5.2: All children (0-17 years)	Number	Percent
Children 0-17 years who have lost one parent	662	8.5
Children 0-17 years who have lost both parents	65	0.8
Children 0-17 years who have lost at least a parent (total number of orphans)	727	9.3
Children 0-17 years who have both parents	7,076	90.7

6: DISABILITY

6.1: Persons with a disability	Number	Percent
Persons aged 2 years and above with a disability	1,705	11.5
Persons aged 2 years and above with a seeing disability	997	6.7
Persons aged 2 years and above with a hearing disability	388	2.6
Persons aged 2 years and above with a walking disability	598	4.0
Persons aged 2 years and above with a remembering disability	663	4.5
Persons aged 2 years and above with multiple disabilities	522	31.9
Children aged 2-17 years with a disability	287	4.2
Youth aged 18-30 years with a disability	338	7.9
Older persons aged 60 years and above with a disability	427	66.6

7: MARRIAGE AND CHILDBEARING

7.1: Marital status of the population	Number	Percent
Persons aged 10 years and above who are married	2,788	45.5
Persons aged 18 years and above who are married	2,741	60.8
Females aged 50 years and above who are widowed	343	46.9
Females aged 10-17 years who have ever been married	52	3.2
Females aged 10-19 years who have ever been married	183	8.9
7.2: Females who have had a birth	Number	Percent
Females aged 12-17 years who have given birth	100	8.2
Females aged 12-19 years who have given birth	218	13.2

8: WORKING STATUS

8.1: Working persons	Number	Percent
Persons aged 10-15 years who were working	348	14.7
Persons aged 10-17 years who were working	587	18.7
Persons aged 18-30 years who were working	3,078	72.3
Persons aged 16-64 years who were working	6,273	74.8
Persons aged 18 years and above who were working	6,239	77.4
Persons aged 60 years and above who were working	358	55.9
8.2: Youths Not working and not in school		
Youths (Persons aged 18-30 years) who were neither working nor in school	491	11.5

9: USE OF ICT

9.1: Mobile phone ownership (10 years and above)	Number	Percent
Persons aged 10 years and above that own at least one mobile phone	6,030	53.9
Males aged 10 years and above that own at least one mobile phone	2,951	58.3
Females aged 10 years and above that own at least one mobile phone	3,079	50.2
9.2: Mobile phone ownership (18-30 years)	Number	Percent
Persons aged 18-30 years and above that own at least one mobile phone	3,077	72.3
Males aged 18-30 years and above that own at least one mobile phone	1,431	77.1
Females aged 18-30 years and above that own at least one mobile phone	1,646	68.6
9.3: Internet Usage (10 years and above)	Number	Percent
Persons aged 10 years and above that use internet	1,748	15.6
Males aged 10 years and above that use internet	1,010	19.9
Females aged 10 years and above that use internet	738	12.0
9.4: Internet Usage (18-30 years)	Number	Percent
Persons aged 18-30 years that use internet	992	23.3
Males aged 18-30 years that use internet	557	30.0
Females aged 18-30 years that use internet	435	18.1

10: HOUSING CONDITIONS

10.1: Construction Materials For the Dwelling Units	Number	Percent
Households living in dwelling units constructed using permanent roof materials	4,099	99.9
Households living in dwelling units constructed using permanent wall materials	2,887	70.3
Households living in dwelling units constructed using permanent floor materials	2,671	65.1
10.2: Status of Dwelling Units	Number	Percent
Households living in semi-permanent dwelling units	1,665	40.6
Households living in temporary dwelling units	4	0.1

11: ACCESS TO COMMUNITY SERVICES

11.1: Access to a Primary school	Number	Percent
Households that are 5 km or more to the nearest primary school, <u>whether public or private</u>	14	0.3
Households that are 5 km or more to the nearest <u>public</u> primary school	77	1.9
11.2: Access to a Secondary school	Number	Percent
Households that are 5 km or more to the nearest secondary school, <u>whether public or private</u>	58	1.4
Households that are 5 km or more to the nearest <u>public</u> secondary school	261	6.4
11.3: Access to a Health Facility	Number	Percent
Households that are 5 km or more to the nearest health facility, <u>whether public or private</u>	70	1.7
Households that are 5 km or more to the nearest <u>public</u> health facility	220	5.4
11.4: Access to a Police post /Police station	Number	Percent
Households that are 5 km or more to the nearest Police Post/Police Station	177	4.3

12: HOUSEHOLD HEALTH AND HYGIENE

12.1:Ownership of Mosquito nets	Number	Percent
Households that own at least a mosquito net	3,642	88.7
Households that own at least a mosquito net that was received free (Government /NGO)	3,308	90.8
12.2: Source Of Water For Drinking	Number	Percent
Households that have access to piped water	3,808	92.8
Households that use a bore hole	7	0.2
12.3:Ownership of a Toilet facility	Number	Percent
Households without any toilet facility	63	1.5
12.4: Other environmental conditions	Number	Percent
Households that <u>properly</u> dispose off solid waste	1,608	39.2
Households which are not living in decent dwellings	3,679	89.6

13: HOUSEHOLD ASSETS

13.1: Owner occupied Dwellings	Number	Percent
Households that are owner occupied	2,290	55.8
Male headed households that are owner occupied	1,629	54.0
Female headed households that are owner occupied	661	60.6
13.2: Movable Assets	Number	Percent
Households that own a television	824	20.1
Households that own a computer	278	6.8
Households that own a bicycle	910	22.2
Households that own a radio	2,649	64.5

14: OTHER HOUSEHOLD CHARACTERISTICS

14.1: Main source of information	Number	Percent
Households whose main source of information is a radio	2,754	67.1
Households whose main source of information is a community announcer	8	0.2
Households whose main source of information is a telephone	349	8.5
14.2: Household Economy and Welfare	Number	Percent
Households that received remittances from abroad in the last 12 months	546	13.3
Households where any member possesses a bank account	1,613	39.3
Households that depend on subsistence farming as a main source of livelihood	1,923	46.8
Households with at least one member engaged in a non-agricultural household based enterprise	3,253	86.1
Households where (members aged 5 years and above) consume less than two meals in a day	522	12.7
14.3: Source of Energy for lighting	Number	Percent
Households that have access to electricity	1,719	41.9
Households that use Tadooba for lighting	1,618	39.4

15: HOUSEHOLD BASED AGRICULTURAL ACTIVITIES

15.1: Household based Agricultural activities	Number	Percent
Households engaged in crop growing	2,700	65.8
Households engaged in maize growing	2,174	53.0
Households engaged in coffee growing	11	0.3
Households engaged in growing of beans	2,595	63.2
Households engaged in growing of millet	33	0.8
Households engaged in growing of sweet potatoes	457	11.1
Households engaged in growing of matooke	191	4.7
Households engaged livestock farming	1,522	37.1
Households engaged in either crop growing or livestock farming	2,888	70.4

BUFUMBIRA COUNTY EAST CONSTITUENCY

LIST OF TABLES

1	Population
2	Education
3	Illiteracy status
4	Ownership of a Birth Certificate
5	Parental Survival and Orphanhood
6	Disability
7	Marriage and Child Bearing
8	Working Status
9	Use of ICT
10	Housing Conditions
11	Access to Community Services
12	Household Health and Hygiene
13	Household Assets
14	Other Household Characteristics
15	Household Based Agricultural Activities

1: POPULATION

1.1: Population Size	Number	Percent
Total population	88,737	
Total male population	40,693	45.9
Total female population	48,044	54.1
Sex ratio (males per 100 females)	84.7	
1.2: Households	Number	Percent
Total households	18,678	
Households headed by males	15,032	80.5
Households headed by females	3,646	19.5
Households headed by children (aged 10-17 years)	34	0.2
Households headed by youth (aged 18-30 years)	4,865	26.0
Households headed by older persons (aged 60 years and above)	3,772	20.2
1.3: Population by Age groups	Number	Percent
Population aged 0-17 years	49,833	56.6
Population aged 18-30 years	18,101	20.6
Population aged 31-59 years	15,592	17.7
Population aged 60 years and over	4,456	5.1
1.4: Population by Special Age groups	Number	Percent
Population aged Less than one Year	3,283	3.7
Population aged 0-4 Years	15,981	18.2
Population aged 0-8 Years	27,985	31.8
Population aged 2-8 Years	21,867	24.9
Population aged 2-17 Years	43,715	49.7
Population aged 6-12 Years	19,276	21.9
Population aged 6-15 Years	26,326	29.9
Population aged 10-15 Years	14,808	16.8
Population aged 10-17 Years	19,269	21.9
Population aged 15-24 Years	17,559	20.0
Population aged 16-64 Years	39,625	45.0
Population aged 15-29 Years	23,210	26.4
Population aged 2 Years and Over	81,864	93.0
Population aged 10 Years and Over	57,418	65.3
Population aged 15 Years and Over	44,777	50.9
Population aged 18 Years and Over	38,149	43.4
Population aged 20 Years and Over	34,493	39.2
Population aged 65 Years and over	2,985	3.4

2: EDUCATION

2.1: Non School attendance of	Number	Percent
Persons aged 6-15 years not attending school	3,693	14.0
Males aged 6-15 years not attending school	1,900	14.6
Females aged 6-15 years not attending school	1,793	13.4
2.2: Persons attending Primary school	Number	Percent
Persons aged 6-12 years attending primary school	16,290	84.5
Males aged 6-12 years attending primary school	8,071	83.7
Females aged 6-12 years attending primary school	8,219	85.3
2.3: Persons attending Secondary school	Number	Percent
Persons aged 13-18 years attending secondary school	3,778	27.5
Males aged 13-18 years attending secondary school	1,861	28.9
Females aged 13-18 years attending secondary school	1,917	26.2
2.4: Persons not in School and Highest Level Completed is below S.4	Number	Percent
Persons aged 15 years and above whose highest level of education completed is below S.4	21,709	87.4
Males aged 15 years and above whose highest level of education completed is below S.4	9,950	83.3
Females aged 15 years and above whose highest level of education completed is below S.4	11,759	91.2
2.5: Persons not in School and Highest Level Completed is "O" Level	Number	Percent
Persons aged 18 years and above whose highest level of education completed is "O" level (S.4)	1,225	3.2
Males aged 18 years and above whose highest level of education completed is "O" level (S.4)	747	4.8
Females aged 18 years and above whose highest level of education completed is "O" level (S.4)	478	2.1
2.6: Persons not in School and Highest Level Completed is "A" Level	Number	Percent
Persons aged 20 years and above whose highest level of education completed is "A" level (S.6)	295	0.9
Males aged 20 years and above whose highest level of education completed is "A" level (S.6)	222	1.6
Females aged 20 years and above whose highest level of education completed is "A" level (S.6)	73	0.4

3: ILLITERACY STATUS

3.1: Persons aged 18 years and above	Number	Percent
Persons aged 18 years and above who are illiterate	14,634	38.4
Males aged 18 years and above who are illiterate	3,671	23.6
Females aged 18 years and above who are illiterate	10,963	48.5
3.2: Other age groups	Number	Percent
Persons aged 10-17 years who are illiterate	4,664	24.2
Persons aged 18-30 years who are illiterate	4,098	22.6
Persons aged 60 years and above who are illiterate	3,199	71.8

4: OWNERSHIP OF A BIRTH CERTIFICATE

4.1: Children with birth certificates	Number	Percent
Children less than 1 year who have a birth certificate	894	27.2
Children less than 5 years who have a birth certificate	4,787	30.0
Children 0-8 years who have a birth certificate	8,595	30.7
Children 0-17 years who have a birth certificate	14,881	31.1

5: PARENTAL SURVIVAL AND ORPHANHOOD

5.1: Children 0-8 years	Number	Percent
Children 0-8 years who have lost one parent	786	2.8
Children 0-8 years who have lost both parents	44	0.2
Children 0-8 years who have lost at least a parent (total number of orphans)	830	3.0
Children 0-8 years who have both parents	27,155	97.0
5.2: All children (0-17 years)	Number	Percent
Children 0-17 years who have lost one parent	2,987	6.0
Children 0-17 years who have lost both parents	235	0.5
Children 0-17 years who have lost at least a parent (total number of orphans)	3,222	6.5
Children 0-17 years who have both parents	46,611	93.5

6: DISABILITY

6.1: Persons with a disability	Number	Percent
Persons aged 2 years and above with a disability	11,217	13.7
Persons aged 2 years and above with a seeing disability	5,960	7.3
Persons aged 2 years and above with a hearing disability	3,438	4.2
Persons aged 2 years and above with a walking disability	4,745	5.8
Persons aged 2 years and above with a remembering disability	6,031	7.4
Persons aged 2 years and above with multiple disabilities	4,453	42.1
Children aged 2-17 years with a disability	2,099	4.8
Youth aged 18-30 years with a disability	1,766	9.8
Older persons aged 60 years and above with a disability	2,984	67.0

7: MARRIAGE AND CHILDBEARING

7.1: Marital status of the population	Number	Percent
Persons aged 10 years and above who are married	16,805	51.7
Persons aged 18 years and above who are married	16,333	72.3
Females aged 50 years and above who are widowed	1,572	32.0
Females aged 10-17 years who have ever been married	529	5.3
Females aged 10-19 years who have ever been married	1,223	10.2
7.2: Females who have had a birth	Number	Percent
Females aged 12-17 years who have given birth	468	6.2
Females aged 12-19 years who have given birth	910	9.5

8: WORKING STATUS

8.1: Working persons	Number	Percent
Persons aged 10-15 years who were working	8,109	54.8
Persons aged 10-17 years who were working	11,064	57.4
Persons aged 18-30 years who were working	15,683	86.6
Persons aged 16-64 years who were working	34,742	87.7
Persons aged 18 years and above who were working	33,540	87.9
Persons aged 60 years and above who were working	3,051	68.5
8.2: Youths Not working and not in school		
Youths (Persons aged 18-30 years) who were neither working nor in school	996	5.5

9: USE OF ICT

9.1: Mobile phone ownership (10 years and above)	Number	Percent
Persons aged 10 years and above that own at least one mobile phone	16,055	28.0
Males aged 10 years and above that own at least one mobile phone	9,189	36.9
Females aged 10 years and above that own at least one mobile phone	6,866	21.1
9.2: Mobile phone ownership (18-30 years)	Number	Percent
Persons aged 18-30 years and above that own at least one mobile phone	7,707	42.6
Males aged 18-30 years and above that own at least one mobile phone	4,164	56.6
Females aged 18-30 years and above that own at least one mobile phone	3,543	33.0
9.3: Internet Usage (10 years and above)	Number	Percent
Persons aged 10 years and above that use internet	2,367	4.1
Males aged 10 years and above that use internet	1,525	6.1
Females aged 10 years and above that use internet	842	2.6
9.4: Internet Usage (18-30 years)	Number	Percent
Persons aged 18-30 years that use internet	1,282	7.1
Males aged 18-30 years that use internet	811	11.0
Females aged 18-30 years that use internet	471	4.4

10: HOUSING CONDITIONS

10.1: Construction Materials For the Dwelling Units	Number	Percent
Households living in dwelling units constructed using permanent roof materials	18,448	98.8
Households living in dwelling units constructed using permanent wall materials	5,533	29.6
Households living in dwelling units constructed using permanent floor materials	2,832	15.2
10.2: Status of Dwelling Units	Number	Percent
Households living in semi-permanent dwelling units	16,427	87.9
Households living in temporary dwelling units	218	1.2

11: ACCESS TO COMMUNITY SERVICES

11.1: Access to a Primary school	Number	Percent
Households that are 5 km or more to the nearest primary school, <u>whether public or private</u>	1,882	10.1
Households that are 5 km or more to the nearest <u>public</u> primary school	2,528	13.5
11.2: Access to a Secondary school	Number	Percent
Households that are 5 km or more to the nearest secondary school, <u>whether public or private</u>	7,757	41.5
Households that are 5 km or more to the nearest <u>public</u> secondary school	9,719	52.0
11.3: Access to a Health Facility	Number	Percent
Households that are 5 km or more to the nearest health facility, <u>whether public or private</u>	4,596	24.6
Households that are 5 km or more to the nearest <u>public</u> health facility	5,706	30.5
11.4: Access to a Police post /Police station	Number	Percent
Households that are 5 km or more to the nearest Police Post/Police Station	7,866	42.1

12: HOUSEHOLD HEALTH AND HYGIENE

12.1:Ownership of Mosquito nets	Number	Percent
Households that own at least a mosquito net	18,055	96.7
Households that own at least a mosquito net that was received free (Government /NGO)	17,976	99.6
12.2: Source Of Water For Drinking	Number	Percent
Households that have access to piped water	2,859	15.3
Households that use a bore hole	555	3.0
12.3:Ownership of a Toilet facility	Number	Percent
Households without any toilet facility	335	1.8
12.4: Other environmental conditions	Number	Percent
Households that <u>properly</u> dispose off solid waste	2,119	11.3
Households which are not living in decent dwellings	18,529	99.2

13: HOUSEHOLD ASSETS

13.1: Owner occupied Dwellings	Number	Percent
Households that are owner occupied	17,587	94.2
Male headed households that are owner occupied	14,134	94.0
Female headed households that are owner occupied	3,453	94.7
13.2: Movable Assets	Number	Percent
Households that own a television	387	2.1
Households that own a computer	322	1.7
Households that own a bicycle	3,294	17.6
Households that own a radio	12,535	67.1

14: OTHER HOUSEHOLD CHARACTERISTICS

14.1: Main source of information	Number	Percent
Households whose main source of information is a radio	12,948	69.3
Households whose main source of information is a community announcer	721	3.9
Households whose main source of information is a telephone	346	1.9
14.2: Household Economy and Welfare	Number	Percent
Households that received remittances from abroad in the last 12 months	1,479	7.9
Households where any member possesses a bank account	2,856	15.3
Households that depend on subsistence farming as a main source of livelihood	17,134	91.7
Households with at least one member engaged in a non-agricultural household based enterprise	7,030	92.1
Households where (members aged 5 years and above) consume less than two meals in a day	2,055	11.0
14.3: Source of Energy for lighting	Number	Percent
Households that have access to electricity	1,153	6.2
Households that use for lighting	12,710	68.0

15: HOUSEHOLD BASED AGRICULTURAL ACTIVITIES

15.1: Household based Agricultural activities	Number	Percent
Households engaged in crop growing	17,764	95.1
Households engaged in maize growing	9,869	52.8
Households engaged in coffee growing	41	0.2
Households engaged in growing of beans	17,247	92.3
Households engaged in growing of millet	44	0.2
Households engaged in growing of sweet potatoes	12,850	68.8
Households engaged in growing of matooke	1,268	6.8
Households engaged livestock farming	11,421	61.1
Households engaged in either crop growing or livestock farming	17,874	95.7

BUFUMBIRA COUNTY NORTH CONSTITUENCY

LIST OF TABLES

1	Population
2	Education
3	Illiteracy status
4	Ownership of a Birth Certificate
5	Parental Survival and Orphanhood
6	Disability
7	Marriage and Child Bearing
8	Working Status
9	Use of ICT
10	Housing Conditions
11	Access to Community Services
12	Household Health and Hygiene
13	Household Assets
14	Other Household Characteristics
15	Household Based Agricultural Activities

1: POPULATION

1.1: Population Size	Number	Percent
Total population	72,008	
Total male population	32,245	44.8
Total female population	39,763	55.2
Sex ratio (males per 100 females)	81.1	
1.2: Households	Number	Percent
Total households	15,613	
Households headed by males	12,146	77.8
Households headed by females	3,467	22.2
Households headed by children (aged 10-17 years)	36	0.2
Households headed by youth (aged 18-30 years)	3,540	22.7
Households headed by older persons (aged 60 years and above)	3,133	20.1
1.3: Population by Age groups	Number	Percent
Population aged 0-17 years	41,239	57.5
Population aged 18-30 years	13,629	19.0
Population aged 31-59 years	13,094	18.3
Population aged 60 years and over	3,697	5.2
1.4: Population by Special Age groups	Number	Percent
Population aged Less than one Year	2,821	3.9
Population aged 0-4 Years	13,747	19.2
Population aged 0-8 Years	23,671	33.0
Population aged 2-8 Years	18,236	25.4
Population aged 2-17 Years	35,804	50.0
Population aged 6-12 Years	15,727	21.9
Population aged 6-15 Years	21,515	30.0
Population aged 10-15 Years	12,039	16.8
Population aged 10-17 Years	15,420	21.5
Population aged 15-24 Years	13,358	18.6
Population aged 16-64 Years	31,289	43.7
Population aged 15-29 Years	17,572	24.5
Population aged 2 Years and Over	66,224	92.4
Population aged 10 Years and Over	45,840	64.0
Population aged 15 Years and Over	35,492	49.5
Population aged 18 Years and Over	30,420	42.5
Population aged 20 Years and Over	27,617	38.5
Population aged 65 Years and over	2,512	3.5

2: EDUCATION

2.1: Non School attendance of	Number	Percent
Persons aged 6-15 years not attending school	3,156	14.7
Males aged 6-15 years not attending school	1,536	14.4
Females aged 6-15 years not attending school	1,620	14.9
2.2: Persons attending Primary school	Number	Percent
Persons aged 6-12 years attending primary school	12,979	82.5
Males aged 6-12 years attending primary school	6,468	82.6
Females aged 6-12 years attending primary school	6,511	82.5
2.3: Persons attending Secondary school	Number	Percent
Persons aged 13-18 years attending secondary school	2,850	26.3
Males aged 13-18 years attending secondary school	1,463	28.6
Females aged 13-18 years attending secondary school	1,387	24.3
2.4: Persons not in School and Highest Level Completed is below S.4	Number	Percent
Persons aged 15 years and above whose highest level of education completed is below S.4	19,107	89.6
Males aged 15 years and above whose highest level of education completed is below S.4	7,525	84.2
Females aged 15 years and above whose highest level of education completed is below S.4	11,582	93.5
2.5: Persons not in School and Highest Level Completed is "O" Level	Number	Percent
Persons aged 18 years and above whose highest level of education completed is "O" level (S.4)	996	3.3
Males aged 18 years and above whose highest level of education completed is "O" level (S.4)	559	4.9
Females aged 18 years and above whose highest level of education completed is "O" level (S.4)	437	2.3
2.6: Persons not in School and Highest Level Completed is "A" Level	Number	Percent
Persons aged 20 years and above whose highest level of education completed is "A" level (S.6)	249	0.9
Males aged 20 years and above whose highest level of education completed is "A" level (S.6)	191	1.9
Females aged 20 years and above whose highest level of education completed is "A" level (S.6)	58	0.3

3: ILLITERACY STATUS

3.1: Persons aged 18 years and above	Number	Percent
Persons aged 18 years and above who are illiterate	11,169	36.7
Males aged 18 years and above who are illiterate	2,711	24.0
Females aged 18 years and above who are illiterate	8,458	44.2
3.2: Other age groups	Number	Percent
Persons aged 10-17 years who are illiterate	4,055	26.3
Persons aged 18-30 years who are illiterate	2,795	20.5
Persons aged 60 years and above who are illiterate	2,605	70.5

4: OWNERSHIP OF A BIRTH CERTIFICATE

4.1: Children with birth certificates	Number	Percent
Children less than 1 year who have a birth certificate	677	24.0
Children less than 5 years who have a birth certificate	4,012	29.2
Children 0-8 years who have a birth certificate	7,226	30.5
Children 0-17 years who have a birth certificate	12,647	31.9

5: PARENTAL SURVIVAL AND ORPHANHOOD

5.1: Children 0-8 years	Number	Percent
Children 0-8 years who have lost one parent	915	3.9
Children 0-8 years who have lost both parents	58	0.2
Children 0-8 years who have lost at least a parent (total number of orphans)	973	4.1
Children 0-8 years who have both parents	22,698	95.9
5.2: All children (0-17 years)	Number	Percent
Children 0-17 years who have lost one parent	2,984	7.2
Children 0-17 years who have lost both parents	230	0.6
Children 0-17 years who have lost at least a parent (total number of orphans)	3,214	7.8
Children 0-17 years who have both parents	38,025	92.2

6: DISABILITY

6.1: Persons with a disability	Number	Percent
Persons aged 2 years and above with a disability	8,357	12.6
Persons aged 2 years and above with a seeing disability	4,557	6.9
Persons aged 2 years and above with a hearing disability	2,616	4.0
Persons aged 2 years and above with a walking disability	3,361	5.1
Persons aged 2 years and above with a remembering disability	4,155	6.3
Persons aged 2 years and above with multiple disabilities	3,152	39.9
Children aged 2-17 years with a disability	1,538	4.3
Youth aged 18-30 years with a disability	1,164	8.5
Older persons aged 60 years and above with a disability	2,244	60.7

7: MARRIAGE AND CHILDBEARING

7.1: Marital status of the population	Number	Percent
Persons aged 10 years and above who are married	13,459	49.8
Persons aged 18 years and above who are married	13,154	68.8
Females aged 50 years and above who are widowed	1,489	35.4
Females aged 10-17 years who have ever been married	334	4.2
Females aged 10-19 years who have ever been married	785	8.2
7.2: Females who have had a birth	Number	Percent
Females aged 12-17 years who have given birth	363	6.2
Females aged 12-19 years who have given birth	707	9.4

8: WORKING STATUS

8.1: Working persons	Number	Percent
Persons aged 10-15 years who were working	3,137	26.1
Persons aged 10-17 years who were working	4,580	29.7
Persons aged 18-30 years who were working	10,670	78.3
Persons aged 16-64 years who were working	25,094	80.2
Persons aged 18 years and above who were working	25,266	83.1
Persons aged 60 years and above who were working	2,647	71.6
8.2: Youths Not working and not in school		
Youths (Persons aged 18-30 years) who were neither working nor in school	1,158	8.5

9: USE OF ICT

9.1: Mobile phone ownership (10 years and above)	Number	Percent
Persons aged 10 years and above that own at least one mobile phone	13,868	30.3
Males aged 10 years and above that own at least one mobile phone	6,942	36.9
Females aged 10 years and above that own at least one mobile phone	6,926	25.6
9.2: Mobile phone ownership (18-30 years)	Number	Percent
Persons aged 18-30 years and above that own at least one mobile phone	6,825	50.1
Males aged 18-30 years and above that own at least one mobile phone	3,118	62.9
Females aged 18-30 years and above that own at least one mobile phone	3,707	42.7
9.3: Internet Usage (10 years and above)	Number	Percent
Persons aged 10 years and above that use internet	1,326	2.9
Males aged 10 years and above that use internet	818	4.4
Females aged 10 years and above that use internet	508	1.9
9.4: Internet Usage (18-30 years)	Number	Percent
Persons aged 18-30 years that use internet	701	5.1
Males aged 18-30 years that use internet	443	8.9
Females aged 18-30 years that use internet	258	3.0

10: HOUSING CONDITIONS

10.1: Construction Materials For the Dwelling Units	Number	Percent
Households living in dwelling units constructed using permanent roof materials	15,354	98.3
Households living in dwelling units constructed using permanent wall materials	4,152	26.6
Households living in dwelling units constructed using permanent floor materials	1,861	11.9
10.2: Status of Dwelling Units	Number	Percent
Households living in semi-permanent dwelling units	13,709	87.8
Households living in temporary dwelling units	249	1.6

11: ACCESS TO COMMUNITY SERVICES

11.1: Access to a Primary school	Number	Percent
Households that are 5 km or more to the nearest primary school, <u>whether public or private</u>	1,942	12.4
Households that are 5 km or more to the nearest <u>public</u> primary school	2,563	16.4
11.2: Access to a Secondary school	Number	Percent
Households that are 5 km or more to the nearest secondary school, <u>whether public or private</u>	6,492	41.6
Households that are 5 km or more to the nearest <u>public</u> secondary school	9,415	60.3
11.3: Access to a Health Facility	Number	Percent
Households that are 5 km or more to the nearest health facility, <u>whether public or private</u>	4,683	30.0
Households that are 5 km or more to the nearest <u>public</u> health facility	5,898	37.8
11.4: Access to a Police post /Police station	Number	Percent
Households that are 5 km or more to the nearest Police Post/Police Station	5,592	35.8

12: HOUSEHOLD HEALTH AND HYGIENE

12.1:Ownership of Mosquito nets	Number	Percent
Households that own at least a mosquito net	15,121	96.8
Households that own at least a mosquito net that was received free (Government /NGO)	15,031	99.4
12.2: Source Of Water For Drinking	Number	Percent
Households that have access to piped water	2,225	14.3
Households that use a bore hole	148	0.9
12.3:Ownership of a Toilet facility	Number	Percent
Households without any toilet facility	397	2.5
12.4: Other environmental conditions	Number	Percent
Households that <u>properly</u> dispose off solid waste	1,727	11.1
Households which are not living in decent dwellings	15,581	99.8

13: HOUSEHOLD ASSETS

13.1: Owner occupied Dwellings	Number	Percent
Households that are owner occupied	14,918	95.5
Male headed households that are owner occupied	11,587	95.4
Female headed households that are owner occupied	3,331	96.1
13.2: Movable Assets	Number	Percent
Households that own a television	262	1.7
Households that own a computer	289	1.9
Households that own a bicycle	2,844	18.2
Households that own a radio	9,986	64.0

14: OTHER HOUSEHOLD CHARACTERISTICS

14.1: Main source of information	Number	Percent
Households whose main source of information is a radio	9,999	64.0
Households whose main source of information is a community announcer	967	6.2
Households whose main source of information is a telephone	215	1.4
14.2: Household Economy and Welfare	Number	Percent
Households that received remittances from abroad in the last 12 months	1,666	10.7
Households where any member possesses a bank account	2,510	16.1
Households that depend on subsistence farming as a main source of livelihood	14,088	90.2
Households with at least one member engaged in a non-agricultural household based enterprise	4,410	89.8
Households where (members aged 5 years and above) consume less than two meals in a day	1,260	8.1
14.3: Source of Energy for lighting	Number	Percent
Households that have access to electricity	780	5.0
Households that use Tadooba for lighting	8,039	51.5

15: HOUSEHOLD BASED AGRICULTURAL ACTIVITIES

15.1: Household based Agricultural activities	Number	Percent
Households engaged in crop growing	14,592	93.5
Households engaged in maize growing	8,900	57.0
Households engaged in coffee growing	46	0.3
Households engaged in growing of beans	13,243	84.8
Households engaged in growing of millet	2,079	13.3
Households engaged in growing of sweet potatoes	11,179	71.6
Households engaged in growing of matooke	1,505	9.6
Households engaged livestock farming	11,208	71.8
Households engaged in either crop growing or livestock farming	14,785	94.7

BUFUMBIRA COUNTY SOUTH CONSTITUENCY

LIST OF TABLES

1	Population
2	Education
3	Illiteracy status
4	Ownership of a Birth Certificate
5	Parental Survival and Orphanhood
6	Disability
7	Marriage and Child Bearing
8	Working Status
9	Use of ICT
10	Housing Conditions
11	Access to Community Services
12	Household Health and Hygiene
13	Household Assets
14	Other Household Characteristics
15	Household Based Agricultural Activities

1: POPULATION

1.1: Population Size	Number	Percent
Total population	105,101	
Total male population	45,652	43.4
Total female population	59,449	56.6
Sex ratio (males per 100 females)	76.8	
1.2: Households	Number	Percent
Total households	23,852	
Households headed by males	18,312	76.8
Households headed by females	5,540	23.2
Households headed by children (aged 10-17 years)	57	0.2
Households headed by youth (aged 18-30 years)	6,202	26.0
Households headed by older persons (aged 60 years and above)	5,022	21.1
1.3: Population by Age groups	Number	Percent
Population aged 0-17 years	60,389	57.6
Population aged 18-30 years	20,364	19.4
Population aged 31-59 years	17,923	17.1
Population aged 60 years and over	6,128	5.8
1.4: Population by Special Age groups	Number	Percent
Population aged Less than one Year	4,017	3.8
Population aged 0-4 Years	19,657	18.8
Population aged 0-8 Years	34,267	32.7
Population aged 2-8 Years	26,750	25.5
Population aged 2-17 Years	52,872	50.4
Population aged 6-12 Years	23,235	22.2
Population aged 6-15 Years	31,772	30.3
Population aged 10-15 Years	17,781	17.0
Population aged 10-17 Years	23,122	22.1
Population aged 15-24 Years	19,880	19.0
Population aged 16-64 Years	45,492	43.4
Population aged 15-29 Years	26,214	25.0
Population aged 2 Years and Over	97,287	92.8
Population aged 10 Years and Over	67,537	64.4
Population aged 15 Years and Over	52,240	49.8
Population aged 18 Years and Over	44,415	42.4
Population aged 20 Years and Over	40,250	38.4
Population aged 65 Years and over	4,264	4.1

2: EDUCATION

2.1: Non School attendance of	Number	Percent
Persons aged 6-15 years not attending school	5,261	16.6
Males aged 6-15 years not attending school	2,603	16.6
Females aged 6-15 years not attending school	2,658	16.5
2.2: Persons attending Primary school	Number	Percent
Persons aged 6-12 years attending primary school	19,073	82.1
Males aged 6-12 years attending primary school	9,373	81.3
Females aged 6-12 years attending primary school	9,700	82.8
2.3: Persons attending Secondary school	Number	Percent
Persons aged 13-18 years attending secondary school	4,206	25.6
Males aged 13-18 years attending secondary school	2,136	28.1
Females aged 13-18 years attending secondary school	2,070	23.4
2.4: Persons not in School and Highest Level Completed is below S.4	Number	Percent
Persons aged 15 years and above whose highest level of education completed is below S.4	23,454	89.4
Males aged 15 years and above whose highest level of education completed is below S.4	9,731	85.9
Females aged 15 years and above whose highest level of education completed is below S.4	13,723	92.0
2.5: Persons not in School and Highest Level Completed is "O" Level	Number	Percent
Persons aged 18 years and above whose highest level of education completed is "O" level (S.4)	1,207	2.7
Males aged 18 years and above whose highest level of education completed is "O" level (S.4)	639	4.1
Females aged 18 years and above whose highest level of education completed is "O" level (S.4)	568	2.0
2.6: Persons not in School and Highest Level Completed is "A" Level	Number	Percent
Persons aged 20 years and above whose highest level of education completed is "A" level (S.6)	358	0.9
Males aged 20 years and above whose highest level of education completed is "A" level (S.6)	250	1.8
Females aged 20 years and above whose highest level of education completed is "A" level (S.6)	108	0.4

3: ILLITERACY STATUS

3.1: Persons aged 18 years and above	Number	Percent
Persons aged 18 years and above who are illiterate	20,747	46.7
Males aged 18 years and above who are illiterate	4,713	30.5
Females aged 18 years and above who are illiterate	16,034	55.4
3.2: Other age groups	Number	Percent
Persons aged 10-17 years who are illiterate	5,630	24.3
Persons aged 18-30 years who are illiterate	5,898	29.0
Persons aged 60 years and above who are illiterate	4,783	78.1

4: OWNERSHIP OF A BIRTH CERTIFICATE

4.1: Children with birth certificates	Number	Percent
Children less than 1 year who have a birth certificate	948	23.6
Children less than 5 years who have a birth certificate	4,857	24.7
Children 0-8 years who have a birth certificate	8,513	24.8
Children 0-17 years who have a birth certificate	14,640	25.2

5: PARENTAL SURVIVAL AND ORPHANHOOD

5.1: Children 0-8 years	Number	Percent
Children 0-8 years who have lost one parent	1,148	3.4
Children 0-8 years who have lost both parents	51	0.1
Children 0-8 years who have lost at least a parent (total number of orphans)	1,199	3.5
Children 0-8 years who have both parents	33,068	96.5
5.2: All children (0-17 years)	Number	Percent
Children 0-17 years who have lost one parent	4,223	7.0
Children 0-17 years who have lost both parents	333	0.6
Children 0-17 years who have lost at least a parent (total number of orphans)	4,556	7.5
Children 0-17 years who have both parents	55,833	92.5

6: DISABILITY

6.1: Persons with a disability	Number	Percent
Persons aged 2 years and above with a disability	10,859	11.2
Persons aged 2 years and above with a seeing disability	6,174	6.3
Persons aged 2 years and above with a hearing disability	3,469	3.6
Persons aged 2 years and above with a walking disability	4,337	4.5
Persons aged 2 years and above with a remembering disability	5,153	5.3
Persons aged 2 years and above with multiple disabilities	4,162	40.3
Children aged 2-17 years with a disability	1,443	2.7
Youth aged 18-30 years with a disability	1,467	7.2
Older persons aged 60 years and above with a disability	3,720	60.7

7: MARRIAGE AND CHILDBEARING

7.1: Marital status of the population	Number	Percent
Persons aged 10 years and above who are married	20,060	48.9
Persons aged 18 years and above who are married	19,615	67.7
Females aged 50 years and above who are widowed	2,487	36.9
Females aged 10-17 years who have ever been married	517	4.3
Females aged 10-19 years who have ever been married	1,268	8.7
7.2: Females who have had a birth	Number	Percent
Females aged 12-17 years who have given birth	479	5.3
Females aged 12-19 years who have given birth	976	8.5

8: WORKING STATUS

8.1: Working persons	Number	Percent
Persons aged 10-15 years who were working	6,862	38.6
Persons aged 10-17 years who were working	9,952	43.0
Persons aged 18-30 years who were working	16,713	82.1
Persons aged 16-64 years who were working	37,690	82.8
Persons aged 18 years and above who were working	36,959	83.2
Persons aged 60 years and above who were working	3,911	63.8
8.2: Youths Not working and not in school		
Youths (Persons aged 18-30 years) who were neither working nor in school	1,869	9.2

9: USE OF ICT

9.1: Mobile phone ownership (10 years and above)	Number	Percent
Persons aged 10 years and above that own at least one mobile phone	23,506	34.8
Males aged 10 years and above that own at least one mobile phone	10,517	39.6
Females aged 10 years and above that own at least one mobile phone	12,989	31.7
9.2: Mobile phone ownership (18-30 years)	Number	Percent
Persons aged 18-30 years and above that own at least one mobile phone	11,478	56.4
Males aged 18-30 years and above that own at least one mobile phone	4,601	65.8
Females aged 18-30 years and above that own at least one mobile phone	6,877	51.4
9.3: Internet Usage (10 years and above)	Number	Percent
Persons aged 10 years and above that use internet	2,766	4.1
Males aged 10 years and above that use internet	1,640	6.2
Females aged 10 years and above that use internet	1,126	2.7
9.4: Internet Usage (18-30 years)	Number	Percent
Persons aged 18-30 years that use internet	1,634	8.0
Males aged 18-30 years that use internet	944	13.5
Females aged 18-30 years that use internet	690	5.2

10: HOUSING CONDITIONS

10.1: Construction Materials For the Dwelling Units	Number	Percent
Households living in dwelling units constructed using permanent roof materials	23,735	99.5
Households living in dwelling units constructed using permanent wall materials	4,500	18.9
Households living in dwelling units constructed using permanent floor materials	3,782	15.9
10.2: Status of Dwelling Units	Number	Percent
Households living in semi-permanent dwelling units	21,025	88.1
Households living in temporary dwelling units	101	0.4

11: ACCESS TO COMMUNITY SERVICES

11.1: Access to a Primary school	Number	Percent
Households that are 5 km or more to the nearest primary school, <u>whether public or private</u>	1,230	5.2
Households that are 5 km or more to the nearest <u>public</u> primary school	1,945	8.2
11.2: Access to a Secondary school	Number	Percent
Households that are 5 km or more to the nearest secondary school, <u>whether public or private</u>	7,447	31.2
Households that are 5 km or more to the nearest <u>public</u> secondary school	8,445	35.4
11.3: Access to a Health Facility	Number	Percent
Households that are 5 km or more to the nearest health facility, <u>whether public or private</u>	3,990	16.7
Households that are 5 km or more to the nearest <u>public</u> health facility	4,542	19.0
11.4: Access to a Police post /Police station	Number	Percent
Households that are 5 km or more to the nearest Police Post/Police Station	8,819	37.0

12: HOUSEHOLD HEALTH AND HYGIENE

12.1:Ownership of Mosquito nets	Number	Percent
Households that own at least a mosquito net	22,924	96.1
Households that own at least a mosquito net that was received free (Government /NGO)	22,809	99.5
12.2: Source Of Water For Drinking	Number	Percent
Households that have access to piped water	12,096	50.7
Households that use a bore hole	283	1.2
12.3:Ownership of a Toilet facility	Number	Percent
Households without any toilet facility	1,765	7.4
12.4: Other environmental conditions	Number	Percent
Households that <u>properly</u> dispose off solid waste	2,885	12.1
Households which are not living in decent dwellings	23,673	99.2

13: HOUSEHOLD ASSETS

13.1: Owner occupied Dwellings	Number	Percent
Households that are owner occupied	22,665	95.0
Male headed households that are owner occupied	17,377	94.9
Female headed households that are owner occupied	5,288	95.5
13.2: Movable Assets	Number	Percent
Households that own a television	422	1.8
Households that own a computer	459	1.9
Households that own a bicycle	4,741	19.9
Households that own a radio	14,454	60.6

14: OTHER HOUSEHOLD CHARACTERISTICS

14.1: Main source of information	Number	Percent
Households whose main source of information is a radio	15,174	63.6
Households whose main source of information is a community announcer	521	2.2
Households whose main source of information is a telephone	375	1.6
14.2: Household Economy and Welfare	Number	Percent
Households that received remittances from abroad in the last 12 months	2,666	11.2
Households where any member possesses a bank account	4,597	19.3
Households that depend on subsistence farming as a main source of livelihood	20,519	86.0
Households with at least one member engaged in a non-agricultural household based enterprise	14,753	92.9
Households where (members aged 5 years and above) consume less than two meals in a day	3,252	13.6
14.3: Source of Energy for lighting	Number	Percent
Households that have access to electricity	1,052	4.4
Households that use Tadooba for lighting	18,547	77.8

15: HOUSEHOLD BASED AGRICULTURAL ACTIVITIES

15.1: Household based Agricultural activities	Number	Percent
Households engaged in crop growing	21,813	91.5
Households engaged in maize growing	17,469	73.2
Households engaged in coffee growing	13	0.1
Households engaged in growing of beans	19,082	80.0
Households engaged in growing of millet	575	2.4
Households engaged in growing of sweet potatoes	2,625	11.0
Households engaged in growing of matooke	584	2.4
Households engaged livestock farming	12,759	53.5
Households engaged in either crop growing or livestock farming	22,174	93.0

APPENDICES

Appendix 1: Population by Sex and Type of Residence by District, Uganda 2014

Central	Male	Female	Urban	Rural	Total
Kisoro	207,324	215,447	299,628	123,143	422,771
Bukomansimbi	75,109	76,304	12,797	138,616	151,413
Butambala	50,082	50,758	15,553	85,287	100,840
Buvuma	48,414	41,476	9,935	79,955	89,890
Gomba	82,167	77,755	12,439	147,483	159,922
Kalangala	31,349	22,944	4,980	49,313	54,293
Kalungu	89,679	93,553	37,094	146,138	183,232
Kampala	712,762	794,318	1,507,080	0	1,507,080
Kayunga	180,706	187,356	27,061	341,001	368,062
Kiboga	75,847	72,371	33,520	114,698	148,218
Kyankwanzi	111,539	103,154	30,621	184,072	214,693
Luwero	226,805	230,153	95,749	361,209	456,958
Lwengo	133,474	141,479	42,919	232,034	274,953
Lyantonde	46,714	47,039	13,823	79,930	93,753
Masaka	145,552	151,452	103,227	193,777	297,004
Mityana	165,717	163,247	107,645	221,319	328,964
Mpigi	125,404	125,144	43,360	207,188	250,548
Mubende	346,654	337,694	113,803	570,545	684,348
Mukono	289,757	307,047	162,710	434,094	596,804
Nakaseke	104,795	92,578	39,397	157,976	197,373
Nakasongola	93,323	88,472	24,667	157,128	181,795
Rakai	254,366	261,943	34,041	482,268	516,309
Ssembabule	126,084	126,513	16,949	235,648	252,597
Wakiso	949,035	1,048,383	1,681,449	315,969	1,997,418

Eastern	Male	Female	Urban	Rural	Total
Amuria	132,521	138,407	17,385	253,543	270,928
Budaka	100,620	106,977	23,809	183,788	207,597
Bududa	105,820	104,353	13,753	196,420	210,173
Bugiri	185,925	196,988	64,223	318,690	382,913
Bukedea	98,684	104,916	10,927	192,673	203,600
Bukwo	45,058	44,298	12,094	77,262	89,356
Bulambuli	86,108	88,405	16,867	157,646	174,513
Busia	156,447	167,215	54,798	268,864	323,662
Butaleja	119,466	124,687	33,201	210,952	244,153
Buyende	158,615	164,452	23,201	299,866	323,067
Iganga	241,182	263,015	92,792	411,405	504,197
Jinja	230,189	241,053	172,714	298,528	471,242
Kaberamaido	106,042	108,984	4,032	210,994	215,026
Kaliro	115,969	120,230	16,753	219,446	236,199
Kamuli	236,389	249,930	58,984	427,335	486,319
Kapchorwa	51,658	53,528	44,211	60,975	105,186
Katakwi	81,673	84,558	9,280	156,951	166,231
Kibuku	97,476	104,557	17,436	184,597	202,033
Kumi	116,457	122,811	36,493	202,775	239,268

Kween	47,404	46,263	6,462	87,205	93,667
Luuka	113,566	124,454	10,264	227,756	238,020
Manafwa	173,580	180,245	53,837	299,988	353,825
Mayuge	229,252	243,987	33,756	439,483	473,239
Mbale	233,339	255,621	126,544	362,416	488,960
Namayingo	106,303	109,140	15,740	199,703	215,443
Namutumba	123,911	128,646	18,679	233,878	252,557
Ngora	68,414	73,505	15,148	126,771	141,919
Pallisa	188,125	198,765	37,937	348,953	386,890
Serere	139,493	146,410	12,158	273,745	285,903
Sironko	120,862	121,559	34,104	208,317	242,421
Soroti	144,976	151,857	49,685	247,148	296,833
Tororo	250,830	266,250	72,325	444,755	517,080

Northern	Male	Female	Urban	Rural	Total
Abim	52,456	55,510	17,168	90,798	107,966
Adjumani	108,298	116,953	41,064	184,187	225,251
Agago	110,495	117,297	29,153	198,639	227,792
Alebtong	110,989	116,552	6,702	220,839	227,541
Amolatar	73,014	74,152	21,479	125,687	147,166
Amudat	54,246	51,523	11,786	93,983	105,769
Amuru	91,284	95,412	9,302	177,394	186,696
Apac	180,995	187,631	75,300	293,326	368,626
Arua	374,755	407,322	61,962	720,115	782,077
Dokolo	89,476	93,617	20,135	162,958	183,093
Gulu	134,571	141,042	150,306	125,307	275,613
Kaabong	79,207	88,672	11,559	156,320	167,879
Kitgum	99,258	104,790	75,581	128,467	204,048
Koboko	102,250	104,245	57,902	148,593	206,495
Kole	117,164	122,163	8,860	230,467	239,327
Kotido	86,169	94,881	66,454	114,596	181,050
Lamwo	65,106	69,265	21,700	112,671	134,371
Lira	196,663	211,380	101,155	306,888	408,043
Maracha	87,900	98,234	9,291	176,843	186,134
Moroto	49,746	53,686	14,196	89,236	103,432
Moyo	68,940	70,072	10,579	128,433	139,012
Nakapiripirit	74,578	82,112	3,727	152,963	156,690
Napak	65,518	76,706	4,733	137,491	142,224
Nebbi	191,104	205,690	58,069	338,725	396,794
Nwoya	65,969	67,537	13,592	119,914	133,506
Omoro	78,837	81,895	18,952	141,780	160,732
Otuke	51,187	53,067	6,213	98,041	104,254
Oyam	187,121	196,523	18,399	365,245	383,644
Pader	86,635	91,369	13,382	164,622	178,004
Yumbe	230,626	254,196	34,806	450,016	484,822
Zombo	115,824	124,257	43,723	196,358	240,081

Western	Male	Female	Urban	Rural	Total
Buhweju	59,059	61,661	2,956	117,764	120,720
Buliisa	57,801	55,360	7,238	105,923	113,161
Bundibugyo	108,435	115,952	40,219	184,168	224,387
Bushenyi	114,207	120,236	56,070	178,373	234,443
Hoima	287,906	285,080	105,944	467,042	572,986
Ibanda	121,440	128,185	136,860	112,765	249,625
Isingiro	235,621	250,739	58,408	427,952	486,360
Kabale	158,238	173,097	78,585	252,750	331,335
Kabarole	233,648	235,588	158,231	311,005	469,236
Kagadi	171,812	179,221	45,286	305,747	351,033
Kakumiro	147,157	145,951	9,834	283,274	293,108
Kamwenge	202,503	211,951	22,840	391,614	414,454
Kanungu	121,081	131,063	51,008	201,136	252,144
Kasese	338,215	356,772	140,050	554,937	694,987
Kibaale	70,815	70,132	6,650	134,297	140,947
Kiruhura	166,214	161,863	31,874	296,203	328,077
Kiryandongo	132,822	133,375	55,770	210,427	266,197
Kisoro	126,055	155,650	27,611	254,094	281,705
Kyegegwa	140,617	141,020	26,294	255,343	281,637
Kyenjojo	210,599	211,605	64,812	357,392	422,204
Masindi	148,121	142,992	94,438	196,675	291,113
Mbarara	230,082	242,547	195,318	277,311	472,629
Mitooma	86,484	96,960	11,396	172,048	183,444
Ntoroko	34,038	32,967	23,789	43,216	67,005
Ntungamo	232,469	251,372	71,485	412,356	483,841
Rubanda	92,011	104,885	26,669	170,227	196,896
Rubirizi	61,765	67,384	17,274	111,875	129,149
Rukungiri	150,016	164,678	43,576	271,118	314,694
Sheema	99,225	108,118	110,256	97,087	207,343

Appendix 2: The Household Questionnaire and code list for the National Population and Housing Census 2014



Republic of Uganda National Population and Housing Census 2014 HOUSEHOLD QUESTIONNAIRE



BOOK NUMBER

IDENTIFICATION PARTICULARS

WRITE NAME IN CAPITAL LETTERS		CODE
DISTRICT:		
COUNTY/MUNICIPALITY:		
SUB COUNTY/DIVISION/TOWN COUNCIL:		
PARISH/WARD:		
LC1:		
EA:		

ENUMERATOR'S NAME AND CODE:		Code
ENUMERATOR'S SIGNATURE:		
DATE: (dd/mm/yyyy):		
PARISH SUPERVISOR'S NAME AND CODE:		
PARISH SUPERVISOR'S SIGNATURE:		
DATE: (dd/mm/yyyy):		

A


Hello, my name is
and I work with Uganda Bureau of Statistics (UBOS). We are conducting the National Population and Housing Census 2014. We are visiting each and every household in the country collecting information about individuals and the homesteads they live in. It takes about 40 minutes to complete the interview. Whatever information you provide will be kept strictly confidential. We would very much appreciate your participation and co-operation in this Census.

Result Code (R1)	Ethnicity (P8)	Religion (P9)	Section 5: Crop Codes
1 Completed	511 Acholi 533 Banyaruguru 555 Kakwa	10 No Religion	10 Maize 39 Cocoa
2 Partially Completed	512 Aliba 534 Banyarwanda 556 Karimojong	11 Anglican	11 Beans 40 Paw Paw
3 Not Interviewed	513 Alur 535 Banyole 557 Kebu (Okebu)	12 Catholic	12 Banana (Food) 41 Eggplants
	514 Aringa 536 Banyoro 558 Kuku 671 Kenya	13 Muslim	13 Cassava 42 Onions
	515 Baamba 537 Baruli 559 Kumam 672 Tanzania	14 Seventh-Day Adventist	14 Sweet Potatoes 43 Passion fruit
	516 Babukusu 538 Barundi 560 Lango 673 Rwanda	15 Orthodox	15 G/nuts 44 Greens (Uodo/ Nakati/ Bbugga/ Malakwang, etc)
	517 Babwisi 539 Basamia 561 Lendu 674 Burundi	16 Pentecostal/ Born Again/ Evangelical	16 Sorghum
	518 Bafumbira 540 Basoga 562 Lugbara 675 South Sudan	17 Baha'i	17 Millets
	519 Baganda 541 Basongora 563 Madi 676 Dem. Rep. Of Congo	18 Baptist	18 Sim Sim 45 Vanilla
	520 Bagisu 542 Batagwenda 564 Mening 677 Somalia	19 Jews	19 Banana (Beer) 46 Tea
	521 Bagungu 543 Batoro 565 Mvuba 678 Other Africa	20 Presbyterian	20 Irish Potatoes 47 Wheat
	522 Bagwe 544 Batuku 566 Napore 681 United Kingdom	21 Mammon	21 Soya Beans 48 Barley
	523 Bagwere 545 Batwa 567 Ngikutio 682 Other Europe	22 Hindus	22 Rice 49 Spinach
	524 Bahehe 546 Chohe 568 Nubi 683 Asia	23 Buddhist	23 Banana (sweet) 50 Cucumber
	525 Bahororo 547 Dodoth 569 Nyangia 684 USA	24 Jehovah's Witness	24 Field Peas 51 Water melons
	526 Bakenyi 548 Ethur 570 Pokot 685 Canada	25 Salvation Army	(Kawo) 52 Carrots
	527 Bakiga 549 Gimara 571 Reli 686 Central & Latin America	26 Traditional	25 Cow Peas 53 Garlic
	528 Bakonzo 550 Ik (Teuso) 572 Sabiny 687 Australia	27 Others	26 Pigeon Peas 54 Mushrooms
	529 Banyabindi 551 Iteso 573 Shana 688 Oceania		27 Sugar cane 55 Tobacco
	530 Banyabutumbi 552 Jie 574 So (Tepeth) 689 Non-Ugandan-Not Stated		28 Yam 56 Grapes
	531 Banyankore 553 Jonam 575 Vonoma		29 Avocado 57 Lemons & Limes
	532 Banyara 554 Jopadhola 576 Other Ugandan		30 Tomatoes 58 Tangarines & Mandarines
			31 Sunflower 59 Straw berries
			32 Cotton 60 Apples & Apricots
			33 Jackfruit 61 Pears
			34 Pineapples 62 Coffee Arabica
			35 Pumpkins 63 Coffee Robusta
			36 Mango 96 Other crops
			37 Oranges 97 N/A
			38 Cabbage

Relationship (P2)	Major Field of Specialization (P20)	Type of Disability (P14-P17)	School Attendance P18	Activity Status (P22)	Marital Status (P26)
10 Usual head of hh - Absent	10 Health Sciences	1 No - no difficulty	1 Attending school in 2014	10 Working for pay	1 Never married
11 Usual head of hh - Present	11 Life & Biological Sciences	2 Yes - some difficulty	2 Left school in 2014	11 Employer	2 Currently married/Cohabiting (Monogamous)
12 Spouse	12 Animal Sciences	3 Yes - a lot of difficulty	3 Left school before 2014	12 Own account worker	3 Currently married/Cohabiting (Polygamous)
13 Biological Son	13 Physical/Natural Sciences	4 Cannot do at all	4 Never been to school	13 Helping without pay in hh business	4 Widowed
14 Biological Daughter	14 Sport Sciences	7 Not Applicable		14 Volunteer	5 Separated
15 Step son	15 Engineering	8 Don't know		15 An apprentice (not paid)	6 Divorced
16 Step daughter	16 Social Sciences & History			16 Looking for work	7 NA
17 Grandson	17 Agriculture			17 Not working and not looking for work	
18 Grand daughter	18 Computer & Information Sciences			18 Household chores	
19 Parent to head or spouse	19 Arts			19 Full time student	
20 Brother or Sister to head or spouse	20 Food science			20 Retired/pensioner	
21 Other relative	21 Business Studies			21 Too old to work	
22 Non relative	22 Mathematics			22 To young to work	
	23 Economics			26 Other	
	24 Demography and Population			97 NA	
	25 Community and Development Studies				
	26 Languages & Literature				
	27 Education				
	28 Gender Studies				
	29 Psychology				
	30 Sociology				
	31 Special Needs Education				
	32 Peace and conflict studies				
	33 Law & Legal Studies				
	34 Visual & Performing Arts				
	35 Commerce				
	36 Procurement and Supply Mgt				
	37 Administration and Human Resource				
	38 Communication and Journalism				
	39 Philosophy & Religion				
	40 Architecture & Physical Planning				
	41 Home Economics				
	42 Library and Archives Sciences				
	43 Tourism and hospitality				
	44 Statistics				
	45 Ethic Studies				
	46 PhD				
	47 PhD				
	96 Other				
	97 NA				


Grade Completed (P19)	Occupation (P23)
01 Never been to school	44 Market-oriented crop and animal producers
02 Did not complete Pre-Primary	45 Experienced non-professionals in teaching
03 Completed Pre-Primary	46 Market oriented fishery workers, hunters, and trappers
04 In P1 but did not complete / attend Pre-Primary	47 Transport laborers
10 Did not complete P1	48 Foremen, supervisors in elementary occupation services
11 P1	49 Travel attendants, guides, conductors,
12 P2	50 Market-oriented animal producers
13 P3	51 Cashier, teller, and related clerks, money lender, debt collectors
14 P4	52 Metal molders, welders, sheet metal workers, structural and metal prepares
15 P5	53 Numerical clerks (Statistical, finance, book keeping and accounting)
16 P6	54 Handicraft workers in wood, textiles, and related materials
17 P7	55 Secretaries and Keyboard operating clerks
21 J1-J3	56 Post-primary education teaching associate professionals
31 S1	57 retailers of human drugs
32 S2	58 Traditional medicine practitioners and faith healers
33 S3	59 Medical assistants
34 S4	60 Laborers in mining
35 S5	61 Pre-primary Education Teaching associate professionals
36 S6	62 Physical science and engineering technicians
41 Professional Certificate	63 Electrical and electronic instrument mechanics and fitters
42 Diploma	64 Other street elementary occupation services e.g. shoe polisher, car washers
43 First Degree	65 Religion professionals (ordained catechist)
44 Post Graduate Certificate	66 Computer assistants and computer equipment operators
45 Post Graduate Diploma	67 Finance and sales associate professionals
46 Masters Degree	68 Accountants, business administrators, and business professionals
47 PhD	69 Public and private administrative associate professionals
96 Other	70 Client Information Clerks
97 NA	96 Others
	97 N/A

BOOK NUMBER




Republic of Uganda
National Population and Housing Census 2014

HOUSEHOLD QUESTIONNAIRE



DA2

SHEET NUMBER 01 

SUMMARY INFORMATION

IDENTIFICATION PARTICULARS

	WRITE NAME IN CAPITAL LETTERS	CODE
DISTRICT	<div style="border: 1px solid black; height: 20px;"></div>	<div style="border: 1px solid black; width: 20px; height: 20px;"></div>
COUNTY / MUNICIPALITY	<div style="border: 1px solid black; height: 20px;"></div>	<div style="border: 1px solid black; width: 20px; height: 20px;"></div>
SUB-COUNTY / DIVISION / T.C.	<div style="border: 1px solid black; height: 20px;"></div>	<div style="border: 1px solid black; width: 20px; height: 20px;"></div>
PARISH / WARD	<div style="border: 1px solid black; height: 20px;"></div>	<div style="border: 1px solid black; width: 20px; height: 20px;"></div>
LC1	<div style="border: 1px solid black; height: 20px;"></div>	<div style="border: 1px solid black; width: 20px; height: 20px;"></div>
EA	<div style="border: 1px solid black; height: 20px;"></div>	<div style="border: 1px solid black; width: 20px; height: 20px;"></div>

ENUMERATOR'S NAME AND CODE:

ENUMERATOR'S SIGNATURE:

DATE: (dd/mm/yyyy): / /

PARISH SUPERVISOR'S NAME AND CODE:

PARISH SUPERVISOR'S SIGNATURE:

DATE: (dd/mm/yyyy): / /

NUMBER OF BOOKS USED


BOOK OF

(EXCLUDE SPOILT AND UNUSED BOOKS)

Household Number	Male	Female	Total
(1)	(2)	(3)	(4)
<div style="border: 1px solid black; width: 30px; height: 20px;"></div>	<div style="border: 1px solid black; width: 30px; height: 20px;"></div>	<div style="border: 1px solid black; width: 30px; height: 20px;"></div>	<div style="border: 1px solid black; width: 30px; height: 20px;"></div>
<div style="border: 1px solid black; width: 30px; height: 20px;"></div>	<div style="border: 1px solid black; width: 30px; height: 20px;"></div>	<div style="border: 1px solid black; width: 30px; height: 20px;"></div>	<div style="border: 1px solid black; width: 30px; height: 20px;"></div>
<div style="border: 1px solid black; width: 30px; height: 20px;"></div>	<div style="border: 1px solid black; width: 30px; height: 20px;"></div>	<div style="border: 1px solid black; width: 30px; height: 20px;"></div>	<div style="border: 1px solid black; width: 30px; height: 20px;"></div>
<div style="border: 1px solid black; width: 30px; height: 20px;"></div>	<div style="border: 1px solid black; width: 30px; height: 20px;"></div>	<div style="border: 1px solid black; width: 30px; height: 20px;"></div>	<div style="border: 1px solid black; width: 30px; height: 20px;"></div>
<div style="border: 1px solid black; width: 30px; height: 20px;"></div>	<div style="border: 1px solid black; width: 30px; height: 20px;"></div>	<div style="border: 1px solid black; width: 30px; height: 20px;"></div>	<div style="border: 1px solid black; width: 30px; height: 20px;"></div>
<div style="border: 1px solid black; width: 30px; height: 20px;"></div>	<div style="border: 1px solid black; width: 30px; height: 20px;"></div>	<div style="border: 1px solid black; width: 30px; height: 20px;"></div>	<div style="border: 1px solid black; width: 30px; height: 20px;"></div>
<div style="border: 1px solid black; width: 30px; height: 20px;"></div>	<div style="border: 1px solid black; width: 30px; height: 20px;"></div>	<div style="border: 1px solid black; width: 30px; height: 20px;"></div>	<div style="border: 1px solid black; width: 30px; height: 20px;"></div>
<div style="border: 1px solid black; width: 30px; height: 20px;"></div>	<div style="border: 1px solid black; width: 30px; height: 20px;"></div>	<div style="border: 1px solid black; width: 30px; height: 20px;"></div>	<div style="border: 1px solid black; width: 30px; height: 20px;"></div>
<div style="border: 1px solid black; width: 30px; height: 20px;"></div>	<div style="border: 1px solid black; width: 30px; height: 20px;"></div>	<div style="border: 1px solid black; width: 30px; height: 20px;"></div>	<div style="border: 1px solid black; width: 30px; height: 20px;"></div>
<div style="border: 1px solid black; width: 30px; height: 20px;"></div>	<div style="border: 1px solid black; width: 30px; height: 20px;"></div>	<div style="border: 1px solid black; width: 30px; height: 20px;"></div>	<div style="border: 1px solid black; width: 30px; height: 20px;"></div>
<div style="border: 1px solid black; width: 30px; height: 20px;"></div>	<div style="border: 1px solid black; width: 30px; height: 20px;"></div>	<div style="border: 1px solid black; width: 30px; height: 20px;"></div>	<div style="border: 1px solid black; width: 30px; height: 20px;"></div>
<div style="border: 1px solid black; width: 30px; height: 20px;"></div>	<div style="border: 1px solid black; width: 30px; height: 20px;"></div>	<div style="border: 1px solid black; width: 30px; height: 20px;"></div>	<div style="border: 1px solid black; width: 30px; height: 20px;"></div>
<div style="border: 1px solid black; width: 30px; height: 20px;"></div>	<div style="border: 1px solid black; width: 30px; height: 20px;"></div>	<div style="border: 1px solid black; width: 30px; height: 20px;"></div>	<div style="border: 1px solid black; width: 30px; height: 20px;"></div>
<div style="border: 1px solid black; width: 30px; height: 20px;"></div>	<div style="border: 1px solid black; width: 30px; height: 20px;"></div>	<div style="border: 1px solid black; width: 30px; height: 20px;"></div>	<div style="border: 1px solid black; width: 30px; height: 20px;"></div>
<div style="border: 1px solid black; width: 30px; height: 20px;"></div>	<div style="border: 1px solid black; width: 30px; height: 20px;"></div>	<div style="border: 1px solid black; width: 30px; height: 20px;"></div>	<div style="border: 1px solid black; width: 30px; height: 20px;"></div>
<div style="border: 1px solid black; width: 30px; height: 20px;"></div>	<div style="border: 1px solid black; width: 30px; height: 20px;"></div>	<div style="border: 1px solid black; width: 30px; height: 20px;"></div>	<div style="border: 1px solid black; width: 30px; height: 20px;"></div>
<div style="border: 1px solid black; width: 30px; height: 20px;"></div>	<div style="border: 1px solid black; width: 30px; height: 20px;"></div>	<div style="border: 1px solid black; width: 30px; height: 20px;"></div>	<div style="border: 1px solid black; width: 30px; height: 20px;"></div>
<div style="border: 1px solid black; width: 30px; height: 20px;"></div>	<div style="border: 1px solid black; width: 30px; height: 20px;"></div>	<div style="border: 1px solid black; width: 30px; height: 20px;"></div>	<div style="border: 1px solid black; width: 30px; height: 20px;"></div>
<div style="border: 1px solid black; width: 30px; height: 20px;"></div>	<div style="border: 1px solid black; width: 30px; height: 20px;"></div>	<div style="border: 1px solid black; width: 30px; height: 20px;"></div>	<div style="border: 1px solid black; width: 30px; height: 20px;"></div>
<div style="border: 1px solid black; width: 30px; height: 20px;"></div>	<div style="border: 1px solid black; width: 30px; height: 20px;"></div>	<div style="border: 1px solid black; width: 30px; height: 20px;"></div>	<div style="border: 1px solid black; width: 30px; height: 20px;"></div>
<div style="border: 1px solid black; width: 30px; height: 20px;"></div>	<div style="border: 1px solid black; width: 30px; height: 20px;"></div>	<div style="border: 1px solid black; width: 30px; height: 20px;"></div>	<div style="border: 1px solid black; width: 30px; height: 20px;"></div>
<div style="border: 1px solid black; width: 30px; height: 20px;"></div>	<div style="border: 1px solid black; width: 30px; height: 20px;"></div>	<div style="border: 1px solid black; width: 30px; height: 20px;"></div>	<div style="border: 1px solid black; width: 30px; height: 20px;"></div>
<div style="border: 1px solid black; width: 30px; height: 20px;"></div>	<div style="border: 1px solid black; width: 30px; height: 20px;"></div>	<div style="border: 1px solid black; width: 30px; height: 20px;"></div>	<div style="border: 1px solid black; width: 30px; height: 20px;"></div>
<div style="border: 1px solid black; width: 30px; height: 20px;"></div>	<div style="border: 1px solid black; width: 30px; height: 20px;"></div>	<div style="border: 1px solid black; width: 30px; height: 20px;"></div>	<div style="border: 1px solid black; width: 30px; height: 20px;"></div>
<div style="border: 1px solid black; width: 30px; height: 20px;"></div>	<div style="border: 1px solid black; width: 30px; height: 20px;"></div>	<div style="border: 1px solid black; width: 30px; height: 20px;"></div>	<div style="border: 1px solid black; width: 30px; height: 20px;"></div>
<div style="border: 1px solid black; width: 30px; height: 20px;"></div>	<div style="border: 1px solid black; width: 30px; height: 20px;"></div>	<div style="border: 1px solid black; width: 30px; height: 20px;"></div>	<div style="border: 1px solid black; width: 30px; height: 20px;"></div>
<div style="border: 1px solid black; width: 30px; height: 20px;"></div>	<div style="border: 1px solid black; width: 30px; height: 20px;"></div>	<div style="border: 1px solid black; width: 30px; height: 20px;"></div>	<div style="border: 1px solid black; width: 30px; height: 20px;"></div>
<div style="border: 1px solid black; width: 30px; height: 20px;"></div>	<div style="border: 1px solid black; width: 30px; height: 20px;"></div>	<div style="border: 1px solid black; width: 30px; height: 20px;"></div>	<div style="border: 1px solid black; width: 30px; height: 20px;"></div>
<div style="border: 1px solid black; width: 30px; height: 20px;"></div>	<div style="border: 1px solid black; width: 30px; height: 20px;"></div>	<div style="border: 1px solid black; width: 30px; height: 20px;"></div>	<div style="border: 1px solid black; width: 30px; height: 20px;"></div>
<div style="border: 1px solid black; width: 30px; height: 20px;"></div>	<div style="border: 1px solid black; width: 30px; height: 20px;"></div>	<div style="border: 1px solid black; width: 30px; height: 20px;"></div>	<div style="border: 1px solid black; width: 30px; height: 20px;"></div>
<div style="border: 1px solid black; width: 30px; height: 20px;"></div>	<div style="border: 1px solid black; width: 30px; height: 20px;"></div>	<div style="border: 1px solid black; width: 30px; height: 20px;"></div>	<div style="border: 1px solid black; width: 30px; height: 20px;"></div>
<div style="border: 1px solid black; width: 30px; height: 20px;"></div>	<div style="border: 1px solid black; width: 30px; height: 20px;"></div>	<div style="border: 1px solid black; width: 30px; height: 20px;"></div>	<div style="border: 1px solid black; width: 30px; height: 20px;"></div>
<div style="border: 1px solid black; width: 30px; height: 20px;"></div>	<div style="border: 1px solid black; width: 30px; height: 20px;"></div>	<div style="border: 1px solid black; width: 30px; height: 20px;"></div>	<div style="border: 1px solid black; width: 30px; height: 20px;"></div>
<div style="border: 1px solid black; width: 30px; height: 20px;"></div>	<div style="border: 1px solid black; width: 30px; height: 20px;"></div>	<div style="border: 1px solid black; width: 30px; height: 20px;"></div>	<div style="border: 1px solid black; width: 30px; height: 20px;"></div>
<div style="border: 1px solid black; width: 30px; height: 20px;"></div>	<div style="border: 1px solid black; width: 30px; height: 20px;"></div>	<div style="border: 1px solid black; width: 30px; height: 20px;"></div>	<div style="border: 1px solid black; width: 30px; height: 20px;"></div>
<div style="border: 1px solid black; width: 30px; height: 20px;"></div>	<div style="border: 1px solid black; width: 30px; height: 20px;"></div>	<div style="border: 1px solid black; width: 30px; height: 20px;"></div>	<div style="border: 1px solid black; width: 30px; height: 20px;"></div>
<div style="border: 1px solid black; width: 30px; height: 20px;"></div>	<div style="border: 1px solid black; width: 30px; height: 20px;"></div>	<div style="border: 1px solid black; width: 30px; height: 20px;"></div>	<div style="border: 1px solid black; width: 30px; height: 20px;"></div>
<div style="border: 1px solid black; width: 30px; height: 20px;"></div>	<div style="border: 1px solid black; width: 30px; height: 20px;"></div>	<div style="border: 1px solid black; width: 30px; height: 20px;"></div>	<div style="border: 1px solid black; width: 30px; height: 20px;"></div>
<div style="border: 1px solid black; width: 30px; height: 20px;"></div>	<div style="border: 1px solid black; width: 30px; height: 20px;"></div>	<div style="border: 1px solid black; width: 30px; height: 20px;"></div>	<div style="border: 1px solid black; width: 30px; height: 20px;"></div>
<div style="border: 1px solid black; width: 30px; height: 20px;"></div>	<div style="border: 1px solid black; width: 30px; height: 20px;"></div>	<div style="border: 1px solid black; width: 30px; height: 20px;"></div>	<div style="border: 1px solid black; width: 30px; height: 20px;"></div>
<div style="border: 1px solid black; width: 30px; height: 20px;"></div>	<div style="border: 1px solid black; width: 30px; height: 20px;"></div>	<div style="border: 1px solid black; width: 30px; height: 20px;"></div>	<div style="border: 1px solid black; width: 30px; height: 20px;"></div>
<div style="border: 1px solid black; width: 30px; height: 20px;"></div>	<div style="border: 1px solid black; width: 30px; height: 20px;"></div>	<div style="border: 1px solid black; width: 30px; height: 20px;"></div>	<div style="border: 1px solid black; width: 30px; height: 20px;"></div>
<div style="border: 1px solid black; width: 30px; height: 20px;"></div>	<div style="border: 1px solid black; width: 30px; height: 20px;"></div>	<div style="border: 1px solid black; width: 30px; height: 20px;"></div>	<div style="border: 1px solid black; width: 30px; height: 20px;"></div>
<div style="border: 1px solid black; width: 30px; height: 20px;"></div>	<div style="border: 1px solid black; width: 30px; height: 20px;"></div>	<div style="border: 1px solid black; width: 30px; height: 20px;"></div>	<div style="border: 1px solid black; width: 30px; height: 20px;"></div>
<div style="border: 1px solid black; width: 30px; height: 20px;"></div>	<div style="border: 1px solid black; width: 30px; height: 20px;"></div>	<div style="border: 1px solid black; width: 30px; height: 20px;"></div>	<div style="border: 1px solid black; width: 30px; height: 20px;"></div>
<div style="border: 1px solid black; width: 30px; height: 20px;"></div>	<div style="border: 1px solid black; width: 30px; height: 20px;"></div>	<div style="border: 1px solid black; width: 30px; height: 20px;"></div>	<div style="border: 1px solid black; width: 30px; height: 20px;"></div>
<div style="border: 1px solid black; width: 30px; height: 20px;"></div>	<div style="border: 1px solid black; width: 30px; height: 20px;"></div>	<div style="border: 1px solid black; width: 30px; height: 20px;"></div>	<div style="border: 1px solid black; width: 30px; height: 20px;"></div>
<div style="border: 1px solid black; width: 30px; height: 20px;"></div>	<div style="border: 1px solid black; width: 30px; height: 20px;"></div>	<div style="border: 1px solid black; width: 30px; height: 20px;"></div>	<div style="border: 1px solid black; width: 30px; height: 20px;"></div>
<div style="border: 1px solid black; width: 30px; height: 20px;"></div>	<div style="border: 1px solid black; width: 30px; height: 20px;"></div>	<div style="border: 1px solid black; width: 30px; height: 20px;"></div>	<div style="border: 1px solid black; width: 30px; height: 20px;"></div>
<div style="border: 1px solid black; width: 30px; height: 20px;"></div>	<div style="border: 1px solid black; width: 30px; height: 20px;"></div>	<div style="border: 1px solid black; width: 30px; height: 20px;"></div>	<div style="border: 1px solid black; width: 30px; height: 20px;"></div>
<div style="border: 1px solid black; width: 30px; height: 20px;"></div>	<div style="border: 1px solid black; width: 30px; height: 20px;"></div>	<div style="border: 1px solid black; width: 30px; height: 20px;"></div>	<div style="border: 1px solid black; width: 30px; height: 20px;"></div>
<div style="border: 1px solid black; width: 30px; height: 20px;"></div>	<div style="border: 1px solid black; width: 30px; height: 20px;"></div>	<div style="border: 1px solid black; width: 30px; height: 20px;"></div>	<div style="border: 1px solid black; width: 30px; height: 20px;"></div>
<div style="border: 1px solid black; width: 30px; height: 20px;"></div>	<div style="border: 1px solid black; width: 30px; height: 20px;"></div>	<div style="border: 1px solid black; width: 30px; height: 20px;"></div>	<div style="border: 1px solid black; width: 30px; height: 20px;"></div>
<div style="border: 1px solid black; width: 30px; height: 20px;"></div>	<div style="border: 1px solid black; width: 30px; height: 20px;"></div>	<div style="border: 1px solid black; width: 30px; height: 20px;"></div>	<div style="border: 1px solid black; width: 30px; height: 20px;"></div>
<div style="border: 1px solid black; width: 30px; height: 20px;"></div>	<div style="border: 1px solid black; width: 30px; height: 20px;"></div>	<div style="border: 1px solid black; width: 30px; height: 20px;"></div>	<div style="border: 1px solid black; width: 30px; height: 20px;"></div>
<div style="border: 1px solid black; width: 30px; height: 20px;"></div>	<div style="border: 1px solid black; width: 30px; height: 20px;"></div>	<div style="border: 1px solid black; width: 30px; height: 20px;"></div>	<div style="border: 1px solid black; width: 30px; height: 20px;"></div>
<div style="border: 1px solid black; width: 30px; height: 20px;"></div>	<div style="border: 1px solid black; width: 30px; height: 20px;"></div>	<div style="border: 1px solid black; width: 30px; height: 20px;"></div>	<div style="border: 1px solid black; width: 30px; height: 20px;"></div>
<div style="border: 1px solid black; width: 30px; height: 20px;"></div>	<div style="border: 1px solid black; width: 30px; height: 20px;"></div>	<div style="border: 1px solid black; width: 30px; height: 20px;"></div>	<div style="border: 1px solid black; width: 30px; height: 20px;"></div>
<div style="border: 1px solid black; width: 30px; height: 20px;"></div>	<div style="border: 1px solid black; width: 30px; height: 20px;"></div>	<div style="border: 1px solid black; width: 30px; height: 20px;"></div>	<div style="border: 1px solid black; width: 30px; height: 20px;"></div>
<div style="border: 1px solid black; width: 30px; height: 20px;"></div>	<div style="border: 1px solid black; width: 30px; height: 20px;"></div>	<div style="border: 1px solid black; width: 30px; height: 20px;"></div>	<div style="border: 1px solid black; width: 30px; height: 20px;"></div>
<div style="border: 1px solid black; width: 30px; height: 20px;"></div>	<div style="border: 1px solid black; width: 30px; height: 20px;"></div>	<div style="border: 1px solid black; width: 30px; height: 20px;"></div>	<div style="border: 1px solid black; width: 30px; height: 20px;"></div>
<div style="border: 1px solid black; width: 30px; height: 20px;"></div>	<div style="border: 1px solid black; width: 30px; height: 20px;"></div>	<div style="border: 1px solid black; width: 30px; height: 20px;"></div>	<div style="border: 1px solid black; width: 30px; height: 20px;"></div>
<div style="border: 1px solid black; width: 30px; height: 20px;"></div>	<div style="border: 1px solid black; width: 30px; height: 20px;"></div>	<div style="border: 1px solid black; width: 30px; height: 20px;"></div>	<div style="border: 1px solid black; width: 30px; height: 20px;"></div>
<div style="border: 1px solid black; width: 30px; height: 20px;"></div>	<div style="border: 1px solid black; width: 30px; height: 20px;"></div>	<div style="border: 1px solid black; width: 30px; height: 20px;"></div>	<div style="border: 1px solid black; width: 30px; height: 20px;"></div>
<div style="border: 1px solid black; width: 30px; height: 20px;"></div>	<div style="border: 1px solid black; width: 30px; height: 20px;"></div>	<div style="border: 1px solid black; width: 30px; height: 20px;"></div>	<div style="border: 1px solid black; width: 30px; height: 20px;"></div>
<div style="border: 1px solid black; width: 30px; height: 20px;"></div>	<div style="border: 1px solid black; width: 30px; height: 20px;"></div>	<div style="border: 1px solid black; width: 30px; height: 20px;"></div>	<div style="border: 1px solid black; width: 30px; height: 20px;"></div>
<div style="border: 1px solid black; width: 30px; height: 20px;"></div>	<div style="border: 1px solid black; width: 30px; height: 20px;"></div>	<div style="border: 1px solid black; width: 30px; height: 20px;"></div>	<div style="border: 1px solid black; width: 30px; height: 20px;"></div>
<div style="border: 1px solid black; width: 30px; height: 20px;"></div>	<div style="border: 1px solid black; width: 30px; height: 20px;"></div>	<div style="border: 1px solid black; width: 30px; height: 20px;"></div>	<div style="border: 1px solid black; width: 30px; height: 20px;"></div>
<div style="border: 1px solid black; width: 30px; height: 20px;"></div>	<div style="border: 1px solid black; width: 30px; height: 20px;"></div>	<div style="border: 1px solid black; width: 30px; height: 20px;"></div>	<div style="border: 1px solid black; width: 30px; height: 20px;"></div>
<div style="border: 1px solid black; width: 30px; height: 20px;"></div>	<div style="border: 1px solid black; width: 30px; height: 20px;"></div>	<div style="border: 1px solid black; width: 30px; height: 20px;"></div>	<div style="border: 1px solid black; width: 30px; height: 20px;"></div>
<div style="border: 1px solid black; width: 30px; height: 20px;"></div>	<div style="border: 1px solid black; width: 30px; height: 20px;"></div>	<div style="border: 1px solid black; width: 30px; height: 20px;"></div>	<div style="border: 1px solid black; width: 30px; height: 20px;"></div>
<div style="border: 1px solid black; width: 30px; height: 20px;"></div>	<div style="border: 1px solid black; width: 30px; height: 20px;"></div>	<div style="border: 1px solid black; width: 30px; height: 20px;"></div>	<div style="border: 1px solid black; width: 30px; height: 20px;"></div>
<div style="border: 1px solid black; width: 30px; height: 20px;"></div>	<div style="border: 1px solid black; width: 30px; height: 20px;"></div>	<div style="border: 1px solid black; width: 30px; height: 20px;"></div>	<div style="border: 1px solid black; width: 30px; height: 20px;"></div>
<div style="border: 1px solid black; width: 30px; height: 20px;"></div>	<div style="border: 1px solid black; width: 30px; height: 20px;"></div>	<div style="border: 1px solid black; width: 30px; height: 20px;"></div>	<div style="border: 1px solid black; width: 30px; height: 20px;"></div>
<div style="border: 1px solid black; width: 30px; height: 20px;"></div>	<div style="border: 1px solid black; width: 30px; height: 20px;"></div>	<div style="border: 1px solid black; width: 30px; height: 20px;"></div>	<div style="border: 1px solid black; width: 30px; height: 20px;"></div>
<div style="border: 1px solid black; width: 30px; height: 20px;"></div>	<div style="border: 1px solid black; width: 30px; height: 20px;"></div>	<div style="border: 1px solid black; width: 30px; height: 20px;"></div>	<div style="border: 1px solid black; width: 30px; height: 20px;"></div>
<div style="border: 1px solid black; width: 30px; height: 20px;"></div>	<div style="border: 1px solid black; width: 30px; height: 20px;"></div>	<div style="border: 1px solid black; width: 30px; height: 20px;"></div>	<div style="border: 1px solid black; width: 30px; height: 20px;"></div>
<div style="border: 1px solid black; width: 30px; height: 20px;"></div>	<div style="border: 1px solid black; width: 30px; height: 20px;"></div>	<div style="border: 1px solid black; width: 30px; height: 20px;"></div>	<div style="border: 1px solid black; width: 30px; height: 20px;"></div>
<div style="border: 1px solid black; width: 30px; height: 20px;"></div>	<div style="border: 1px solid black; width: 30px; height: 20px;"></div>	<div style="border: 1px solid black; width: 30px; height: 20px;"></div>	<div style="border: 1px solid black; width: 30px; height: 20px;"></div>
<div style="border: 1px solid black; width: 30px; height: 20px;"></div>	<div style="border: 1px solid black; width: 30px; height: 20px;"></div>	<div style="border: 1px solid black; width: 30px; height: 20px;"></div>	<div style="border: 1px solid black; width: 30px; height: 20px;"></div>
<div style="border: 1px solid black; width: 30px; height: 20px;"></div>	<div style="border: 1px solid black; width: 30px; height: 20px;"></div>	<div style="border: 1px solid black; width: 30px; height: 20px;"></div>	<div style="border: 1px solid black; width: 30px; height: 20px;"></div>
<div style="border: 1px solid black; width: 30px; height: 20px;"></div>	<div style="border: 1px solid black; width: 30px; height: 20px;"></div>		

71

[illegible]

DD4						HOUSEHOLD NUMBER					
SECTION 2: HOUSING CONDITIONS						SECTION 3: COMMUNITY SERVICES				SECTION 4: HOUSEHOLD CHARACTERISTICS	
What is the occupancy tenure of the dwelling unit?	What type of dwelling unit does this household occupy?	How many rooms were used on the Census Night for sleeping?	Types of materials mainly used for construction of the roof	Types of materials mainly used for construction of the wall	Types of materials mainly used for the floor	What is the distance from home to the nearest on foot, irrespective of whether you use the service or not <i>(Record distance in kms, if distance is given in miles, refer to code list H7-H13)</i>				What source of energy does this household mainly use for lighting?	
H1	H2	H3	H4	H5	H6	H7			H11		H14
10 = Owner occupied 11 = Free Public 12 = Free Private 13 = Subsidized public 14 = Subsidized private 15 = Rented public 16 = Rented private 96 = Other	10 = Detached house (single or multi-storey) 11 = Semi-Detached house 12 = Flat in a Block of Flats 13 = Room or rooms of a Main House 14 = Servants Quarters 15 = Tenement (Muzigo) 16 = Garage 17 = Go down/Basement 18 = Store 96 = Other	If 9 or more were used, record 9	10 = Iron sheets 11 = Tiles 12 = Asbestos 13 = Concrete 14 = Tins 15 = Thatch 96 = Other	10 = Concrete/Stones 11 = Cement Blocks 12 = Burnt/Stabilised bricks 13 = Unburnt bricks with Cement 14 = Unburnt bricks with mud 15 = Wood 16 = Mud and Pole 17 = Tin/Iron sheets 96 = Other	10 = Earth 11 = Rammed earth 12 = Cement screed 13 = Concrete 14 = Tiles 15 = Brick 16 = Stone 17 = Wood 96 = Other	Public Health Facility			Public Secondary School		10 = Electricity- National grid (Umeme) 11 = Electricity- Solar 12 = Electricity- Personal Generator 13 = Electricity- Community/thermal plant 14 = Gas 15 = Liquefied Petroleum Gas (LPG) 16 = Biogas 17 = Paraffin-Lantern 18 = Paraffin-Tadooba 19 = Candles 20 = Firewood 21 = Cow Dung 22 = Grass (reeds) 96 = Other
						H8			H12		
						Private Health Facility			Private Secondary School		
						H9			H13		
						Public Primary School			Police Station / Police Post		
						H10			Private Primary School		
SECTION 4: HOUSEHOLD CHARACTERISTICS (CONTINUED)											
What source of energy does this household mainly use for cooking?	What is the household's main source of water for drinking?	What is the distance to this source of water?	What type of toilet facility does this household mainly use?	Does the Household share this toilet facility with other households?	What is the most commonly used method of solid waste disposal from the household?	What type of bathroom does this household mainly use?	What type of kitchen does this household mainly use?				
H15	H16	H17	H18	H19	H20	H21	H22				
10 = Electricity- National grid (Umeme) 11 = Electricity- Solar 12 = Electricity- Personal Generator 13 = Electricity- Community/thermal plant 14 = Gas 15 = Liquefied Petroleum Gas (LPG) 16 = Biogas 17 = Paraffin-Stove 18 = Charcoal 19 = Firewood 20 = Cow Dung 21 = Grass (reeds) 96 = Other	10 = Piped water into dwelling 11 = Piped water to the yard 12 = Public Taps 13 = Borehole in yard/plot 14 = Public borehole 15 = Protected well/spring 16 = Unprotected well/spring 17 = River/Stream/Lake 18 = Vendor 19 = Tanker Truck 20 = Gravity Flow Scheme 21 = Rain Water 22 = Bottled Water 96 = Other	<i>(Record distance in kms, if distance is given in miles, see distance conversion list)</i> <i>If the water source is on premises, record 0.0</i>	10 = Flush Toilet 11 = VIP Latrine 12 = Covered Pit Latrine <u>with a slab</u> 13 = Covered Pit Latrine <u>without a slab</u> 14 = Uncovered Pit Latrine <u>with a slab</u> 15 = Uncovered Pit Latrine <u>without a slab</u> 16 = Ecosan (compost toilet) 17 = No facility, bush, polythene bags, bucket, etc 96 = Other	1 = Yes 2 = No 7 = N/A (For "No Facility, Bush, Polythene bags, bucket etc)	10 = Occupants dispose solid waste in the garden, and DO NOT burn or bury it. 11 = Occupants burn solid waste 12 = Occupants bury solid waste 13 = Occupants dispose solid waste in a local dump supervised by urban authorities 14 = Occupants dispose solid waste in a local dump NOT supervised by urban authorities 15 = Solid waste collected by waste vendor 16 = Occupants dispose solid waste into river/sea/stream/pond 96 = Other arrangements	10 = Inside, drainage provided 11 = Inside, no drainage provided 12 = Outside built, drainage provided 13 = Outside built, no drainage provided 14 = Make shift 15 = None 96 = Other	10 = Inside, specific room 11 = Inside, no specific room 12 = Outside, built 13 = Make shift 14 = Open space				
HOUSEHOLD ASSETS		INFORMATION	POSTAL SERVICES	MOSQUITO NETS		SOURCE OF LIVELIHOOD		REMITTANCES			
Does any member of this household own..... (ASSETS)? <i>If Yes, record the number, if 9 or more, write 9 If none, record 0</i>		What is the household's main source of information?	Did any member of this household send/receive a letter/parcel by postal services during the last 12 months ?	Does this household have any mosquito nets ?	IF YES IN H26, were the mosquito nets given free or were they bought ? Record the appropriate code in the boxes below 1 = Yes; 2 = No; 7 = NA; 8 = DK	What was the main source of the household's livelihood in the last 12 months ?	Did the household receive any money or physical items from any relative / family member / friend abroad during the last 12 months ?	IF YES IN H29, in which countries do the relatives / family members / friends reside ? 1 = Yes; 2 = No; 7 = N/A			
H23		H24	H25	H26	H27	H28	H29	H30			
A: Motor vehicle	G: Television	10 = Radio 11 = Word of Mouth 12 = Telephone 13 = Print Media 14 = Post Mail 15 = Hand Mail 16 = Television 17 = Community Meetings	1 = Yes, Once 2 = Yes, Twice 3 = Yes, Thrice 4 = Yes, 4 times and above 5 = No 8 = Don't Know	1 = Yes 2 = No	A=Given free by Gov't B= Given free by NGO C= Given free by friend/relative D= Bought	10 = Subsistence farming 11 = Commercial farming 12 = Employment income 13 = Business Enterprise 14 = Cottage Industry 15 = Property Income 16 = Family / Friends / Relatives 17 = Institutional or Program support (e.g Red Cross, WFP, e.t.c) 18 = Sale of assets 96 = Other	1 = Yes, both goods and money 2= Yes, Money only 3 = Yes, Goods only 4 = No 8 = DK	A. Australia B. Canada C. France D. Germany E. India F. Japan G. Kenya H. Libya I. Saudi Arabia	J. South Africa K. U.K L. U.S.A M. Sweden N. United Arab Emirates O. Yemen P. South Sudan X. Other country Y. Don't know country of origin		
B: Motor cycle	H: Radio	18 = Internet 19 = Community Announcer 96 = Other									
C: Bicycle	I: Fixed Phone										
D: Wheel Chair	J: Computer / Laptop										
E: Canoe / Boat	K: Generator										
F: Donkey											

74

DISTRICT OF PREVIOUS RESIDENCE (P12)					H7-H13, H17			
Central	Eastern	Northern	Western	Country of Previous Residence	Distance Conversion			
					1 mile = 1.6 km			
101 Kalangala	201 Bugiri	301 Adjumani	401 Bundibugyo	671 Kenya	Mile	Km	Mile	Km
102 Kampala	202 Busia	302 Apac	402 Bushenyi	672 Tanzania	0.5	0.8	16.5	26.4
103 Kiboga	203 Iganga	303 Arua	403 Hoima	673 Rwanda	1.0	1.6	17.0	27.2
104 Luwero	204 Jinja	304 Gulu	404 Kabale	674 Burundi	1.5	2.4	17.5	28.0
105 Masaka	205 Kamuli	305 Kitgum	405 Kabarole	675 South Sudan	2.0	3.2	18.0	28.8
106 Mpigi	206 Kapchorwa	306 Kotido	406 Kasese	676 Dem. Rep. Of Congo	2.5	4.0	18.5	29.6
107 Mubende	207 Katakwi	307 Lira	407 Kibaale	677 Somalia	3.0	= 4.8	19.0	= 30.4
108 Mukono	208 Kumi	308 Moroto	408 Kisoro	678 Other Africa	3.5	= 5.6	19.5	= 31.2
109 Nakasongola	209 Mbale	309 Moyo	409 Masindi	681 United Kingdom	4.0	= 6.4	20.0	= 32.0
110 Rakai	210 Pallisa	310 Nebbi	410 Mbarara	682 Other Europe	4.5	= 7.2	20.5	= 32.8
111 Sembabule	211 Soroti	311 Nakapiripirit	411 Ntungamo	683 Asia 684 USA	5.0	= 8.0	21.0	= 33.6
112 Kayunga	212 Tororo	312 Pader	412 Rukungiri	685 Canada	5.5	= 8.8	21.5	= 34.4
113 Wakiso	213 Kaberamaido	313 Yumbe	413 Kamwenge	686 Central & Latin America	6.0	= 9.6	22.0	= 35.2
114 Lyantonde	214 Mayuge	314 Abim	414 Kanungu	687 Australia	6.5	= 10.4	22.5	= 36.0
115 Mityana	215 Sironko	315 Amolatar	415 Kyenjojo	688 Oceania	7.0	= 11.2	23.0	= 36.8
116 Nakaseke	216 Amuria	316 Amuru	416 Buliisa	689 Non-Ugandan-Not Stated	7.5	= 12.0	23.5	= 37.6
117 Buikwe	217 Budaka	317 Dokolo	417 Ibanda		8.0	= 12.8	24.0	= 38.4
118 Bukomasimbi	218 Bududa	318 Kaabong	418 Isingiro		8.5	= 13.6	24.5	= 39.2
119 Butambala	219 Bukedea	319 Koboko	419 Kiruhura		9.0	= 14.4	25.0	= 40.0
120 Buvuma	220 Bukwo	320 Maracha	420 Buhweju		9.5	= 15.2	25.5	= 40.8
121 Gomba	221 Butaleja	321 Oyam	421 Kiryandongo		10.0	= 16.0	26.0	= 41.6
122 Kalungu	222 Kaliro	322 Agago	422 Kyegegwa		10.5	= 16.8	26.5	= 42.4
123 Kyankwanzi	223 Manafwa	323 Alebtong	423 Mitooma		11.0	= 17.6	27.0	= 43.2
124 Lwengo	224 Namutumba	324 Amudat	424 Ntoroko		11.5	= 18.4	27.5	= 44.0
	225 Bulambuli	325 Kole	425 Rubirizi		12.0	= 19.2	28.0	= 44.8
	226 Buyende	326 Lamwo	426 Sheema		12.5	= 20.0	28.5	= 45.6
	227 Kibuku	327 Napak			13.0	= 20.8	29.0	= 46.4
	228 Kween	328 Nwoya			13.5	= 21.6	29.5	= 47.2
	229 Luuka	329 Otuke			14.0	= 22.4	30.0	= 48.0
	230 Namayingo	330 Zombo			14.5	= 23.2	30.5	= 48.8
	231 Ngora				15.0	= 24.0	31.0	= 49.6
	232 Serere				15.5	= 24.8	31.5	= 50.4
					16.0	= 25.6	32.0	= 51.2
					=		=	=
					=		=	=
					=		=	=
					=		=	=