



# **National Population and Housing Census 2014**

## **Area Specific Profiles**



---

## **Manafwa District**

---

**April 2017**

*This report presents findings of National Population and Housing Census (NPHC) 2014 undertaken by the Uganda Bureau of Statistics (UBOS). Additional information about the Census may be obtained from the UBOS Head Office, Statistics House. Plot 9 Colville Street, P. O. Box 7186, Kampala, Uganda; Telephone: +256-414 706000 Fax: +256-414 237553; E-mail: [ubos@ubos.org](mailto:ubos@ubos.org); Website: [www.ubos.org](http://www.ubos.org)*

*Cover Photos: Uganda Bureau of Statistics*

### **Recommended Citation**

*Uganda Bureau of Statistics 2017, The National Population and Housing Census 2014 – Area Specific Profile Series, Kampala, Uganda*

## FOREWORD

Demographic and socio-economic data are useful for planning and evidence-based decision making in any country. Such data are collected through Population Censuses, Demographic and Socio-economic Surveys, Civil Registration Systems and other Administrative sources. In Uganda, however, the Population and Housing Census remains the main source of demographic data, especially at the sub-national level.

Population Census taking in Uganda dates back to 1911 and since then, the country has undertaken five such Censuses. The most recent, the National Population and Housing Census 2014, was undertaken under the theme ‘Counting for Planning and Improved Service Delivery’. The enumeration for the 2014 Census was conducted in August/September 2014. The Uganda Bureau of Statistics (UBOS) worked closely with different Government Ministries, Departments and Agencies (MDAs) as well as Local Governments (LGs) to undertake the census exercise.

The 2014 Census provides several statistics on different aspects of the population. These include the population size and distribution which is a key indicator used for resource allocation, measurement of the extent of service delivery, decision making and budgeting among others. Other information includes the characteristics of the population, those of the dwellings they live in and information on the Household based Agricultural activities.

On behalf of the Bureau, I would like to appreciate the Government of Uganda for providing the necessary resources and infrastructure for undertaking the National Population and Housing Census (NPHC) 2014. In addition, the Bureau would like to thank the Development Partners, particularly United Kingdom Aid (UKAid), the United Nations Fund for Population Activities (UNFPA) and the United Nations Children’s Fund (UNICEF) for providing technical and financial support towards the Census. The Bureau would also like to thank the Media for creating awareness about the Census 2014 and, most importantly, the individual households who voluntarily provided the required information.

**Together We Count**



**Ben Paul Mungyereza**  
**EXECUTIVE DIRECTOR**

## PREFACE

The Uganda Bureau of Statistics Act No. 12 of 1998 provides for the Minister responsible for Planning to direct ‘that a Census be taken’ on any matter specified in the Act. This was the legal basis for conducting the National Population and Housing Census (NPHC) 2014. The long-term objective of the NPHC 2014 is to ensure availability of bench-mark demographic and socio-economic data for use in planning, evidence based decision making, policy formulation and programme evaluation.

In order to support the planning process, the results from the Census 2014 are being released in phases as and when they become available. The Provisional Results Report was released in November, 2014 followed by the Final Results which were released in March 2016 and the Sub-county Reports in June 2016. These reports collectively provided information on the characteristics of the population and households at the national, district and sub-county levels.

The **Constituency Profiles Series** presents the characteristics of the population and household as well as the housing conditions of the population in each parliamentary constituency of the district. For convenience, however, the profiles of all constituencies in one district have been published in one report. In each report, the Appendix has selected national level tables for reference.

Uganda Bureau of Statistics (UBOS) is in the process of producing several other reports including the National Analytical Results (Monograph Series), District-level Analytical Reports and the Census Atlas. These will present detailed findings covering more indicators on different thematic areas. In addition to the above reports, the Bureau will be providing electronic datasets to facilitate deeper analysis of the data.

The Bureau, appeals to Policy Makers, Researchers and Academicians to make extensive use of this information for policy analysis and evidence-based decision-making at different levels of service delivery. Together we can harness information resources from the Census to improve service delivery and create a better Uganda.

## ABOUT THE INDICATORS

### Household

A group of persons who usually eat and live together. A household may be comprised of one or more persons provided they share the same meal and sleep under the same roof. The persons may be related usually in a family setting or may not be related.

### Household population

All those persons who were enumerated in households. It excludes population which was enumerated on the streets (floating population) or those who were living in Institutions such as correction centres, religious institutions and health facility in-patients.

### Population size

Refers to the total population count in the country or any geographical location based on the census reference night. It includes all those persons who were enumerated in households and institutions.

### Population by age groups or specific age

This is the total count of the household population by a given age, age- groups or special age-groups. It excludes the non-household population.

### Education characteristics/indicators

The indicators refer to specific age groups. The official school going age is 6-12 years for primary education, 13-18 years for secondary education and 19-24 years for tertiary education. However, the analysis includes the age-group 6-15 years to take into consideration those who start primary level at more than 6 years.

For those who have never been to school, we consider the age group 15 years and above on the assumption that by age 15, there are minimal chances for one joining school for the first time.

### Illiteracy

This is defined as lack of the ability to read and write with understanding in any language. Persons aged 10 years and above who could not read and write responded (Codes 2, 3 and 4) to Question P21 of the Household Questionnaire. The objective of using this indicator is to shed light on the areas that need improvements in the delivery of the services.

### Ownership of a birth certificate

Ownership includes all those persons (adults or children) who either had a Short Birth Certificate or a Long Birth Certificate during census enumeration. The analysis is based on specific age categories.

## **Parental survival and Orphanhood**

Parental survival and orphanhood are derived variables which are based on two questions (P10 and P11), whether or not the biological mother/father of the respondent was still alive at the time of the census. Orphans are persons below the age of 18 who have lost any or both of their parents.

## **Disability**

The questions P14 to P17 on functional difficulty are used to determine whether the person has a disability or not. It includes all persons aged 2 years and above. An individual is considered to be disabled if he/she has any one of the 4 questions with at least some difficulty.

Multiple disabilities refer to all persons who reported more than one functional difficulty.

## **Marriage and Child Bearing**

Marital Status refers to all those persons who are living together and consider themselves as married. It includes all forms of consensual union whether legal or non-legal, religious or cultural or non-consensual union.

## **Employment**

Questions on employment were eligible for all household population aged 10 years and above. Currently the age category for the working population 16 -64 years. The analysis is based on specific age groups of children 10-15 years, (other countries define a child as anyone below the age of 16, hence the age group 10-15 years).

## **Construction materials of the dwelling**

The information is derived from the question on “materials used for the roof, floor and wall. Permanent floor materials include concrete, cement screed, tiles, wood, while permanent roof materials include roof tiles, iron sheets, asbestos and concrete.

## **Status of dwelling**

The permanency nature of construction materials determines the status of the dwelling. The idea is to be able to classify a dwelling unit as temporary or permanent.

## **Access to community services**

The choice of indicators is for those households that are beyond the 5 km radius for access to services (access to public/private schools, health facilities and a police station/post). The nearness of the service to the household does not take into consideration whether the services are utilized by the household or not.

## **Other environmental conditions – waste disposal**

Any household was considered to have proper waste disposal if at the time of the census it disposed off solid waste using registered or unregistered waste vendors as well as using skip bins provided by the Municipal authority.

### **Owner occupied dwellings**

These are disaggregated by household headship. The percentages for male and female headed households may not add up to 100. For instance among the female headed households, what proportion are owner occupied? Among the male headed households, what proportion are owner occupied?

### **Source of energy for lighting – electricity**

In the household questionnaire, Question H14 had about four forms of electricity used for lighting (grid, generator, solar, community/thermal plant). Any household that indicated using any of the four forms was considered to have access to electricity.

### **Household based agricultural activities**

A household engaged in agriculture is one which is engaged in any of the following:

Growing of any crops, or rearing animals or involved in bee keeping or forestry/tree growing, and any fish farming. Agricultural activities outside the district were not considered.

## TABLE OF CONTENTS

FOREWORD.....	i
PREFACE .....	ii
ABOUT THE INDICATORS.....	iii
INTRODUCTION.....	1
1.1 General Information about Uganda.....	1
1.2 About the National Population and Housing Census 2014.....	1
1.3 National Highlights of the 2014 Census Results .....	2
AREA SPECIFIC PROFILES .....	18
MANAFWA DISTRICT .....	19
BUBULO COUNTY WEST CONSTITUENCY .....	28
BUBULO COUNTY EAST CONSTITUENCY .....	37
APPENDICES .....	46
Appendix 1: Population by Sex and Type of Residence by District, Uganda 2014 .....	47
Appendix 2: The Household Questionnaire for the National Population and Housing Census 2014 .....	50



## **LIST OF MAPS**

- Map 1: Districts of Uganda as of 1st July 2016
- Map 2: Manafwa District Parliamentary Constituencies as of 1st July, 2016
- Map 3: Distribution of Population by Sub-county; Manafwa District, 2014
- Map 4: Percentage Distribution of Population Aged 6-12 Years Not in School; Manafwa District, 2014
- Map 5: Percentage Distribution of Youth Population aged 18-30 Years, Not in School and not working; Manafwa District, 2014
- Map 6: Percentage Distribution of Population aged 10-19 Years, Ever Married; Manafwa District, 2014
- Map 7: Percentage Distribution of Orphans aged 0-17 Years; Manafwa District, 2014
- Map 8: Percentage Distribution of Households within 5 Km and Over to the nearest Public Health Facility; Manafwa District, 2014
- Map 9: Percentage Distribution of Households without access to Safe Water; Manafwa District, 2014
- Map 10: Percentage Distribution of Households with no Toilet facility; Manafwa District, 2014
- Map 11: Percentage Distribution of Households having less than 2 meals a day; Manafwa District, 2014

## INTRODUCTION

### 1.1 General Information about Uganda

#### Location and Size

Uganda is located in East Africa and lies across the equator, about 800 kilometres inland from the Indian Ocean. It lies between Latitude 1° 29' South and 4° 12' North of the Equator as well as Longitude 29° 34' East and 35° 0' East of Greenwich. The country is landlocked, bordered by Kenya in the East; South Sudan in the North; Democratic Republic of Congo in the West; Tanzania in the South; and Rwanda in South West. It has a total area of 241,551 square kilometres, of which the land area covers 200,523 square kilometres.

#### Administration

The country was divided into 116 districts (as at August/September 2014). The districts were further subdivided into 200 Counties, 1,378 Sub-counties and 6,495 Parishes. The role of these administrative units is to implement and monitor government programmes at the respective levels. Overtime, the administrative units have been sub-divided with the aim of easing administration and improving the delivery of services.

### 1.2 About the National Population and Housing Census 2014

The overall objective of the National Population and Housing Census (NPHC) 2014 was to provide data that are required for planning at all levels. The NPHC 2014 had three distinct phases namely, the Preparatory Phases, the Enumeration Phase and the Post Enumeration Phase.

The preparatory work for the Census 2014 started in 2008 with development of the overall strategy of undertaking the census. Other preparatory activities included development of the questionnaires, undertaking of the census mapping, conducting the Pilot Census, carrying out the census advocacy and publicity and other administrative support services.

The enumeration phase included recruitment and training of field staff, delivery of enumeration materials, conducting the main census enumeration and retrieval of materials. The census activities in the district were conducted under the overall responsibility of the Chief Administrative Officers (CAOs) or the Executive Director in the case of Kampala Capital City Authority (KCCA). All field staff underwent mandatory ten (10) day training on Census concepts and procedures.

The Census Reference Night was the night of 27th August 2014 and the enumeration was conducted on a de facto basis. The enumeration started on 28th August and continued to 7th September 2014. The Enumerators moved from household to household within the assigned Enumeration Areas (EAs) and administered the Census questionnaire to the Head of household or any other assigned household member through face to face interviews.

The data processing was centrally managed at the Bureau offices. The filled questionnaires were captured with scanning technology and the information extracted using automatic character recognition.

Data quality assurance enhances credibility, usability and utility of data. The Post Enumeration Survey (PES) was used as one of the tools to evaluate the quality of the census data through testing the completeness of coverage and accuracy. The PES enumeration was undertaken in October/November 2014, and it covered 800 EAs distributed in all the districts and Kampala Capital City Authority (KCCA).

### 1.3 National Highlights of the 2014 Census Results

The results of the NPHC 2014 will be published in phases. The Provisional Census Results were disseminated in November 2014. These gave the number of households and the population by sex for administrative areas down to sub-county level. The first set of the final results of the Census 2014 were published in the Main Report which was released in March 2016. The report includes information on the population size and distribution as well as characteristics of the population and the dwellings they live in. The results showed that the total population of Uganda in 2014 was 34.6 million persons as shown in Table 1.

Between 2002 and 2014, the population increased from 24.2 million to 34.6million. This implied average growth rate of 3.0 percent per annum.

**Table 1: Population size and Population Growth Rates, Uganda, 1969-2014**

Census year	Male	Female	Total	Inter-censal Period	Average Annual Growth Rate (%)
1969	4,812,447	4,722,604	9,535,051		
1980	6,259,837	6,376,342	12,636,179	1969-1980	2.7
1991	8,185,747	8,485,558	16,671,705	1980-1991	2.5
2002	11,824,273	12,403,024	24,227,297	1991-2002	3.2
2014	17,060,832	17,573,818	34,634,650	2002-2014	3.0

The distribution of the population among the districts is given in Appendix Table 1. Wakiso district had a population of nearly two (2) million, accounting for about six percent of the total population, while some districts were less populous, Kalangala district being the smallest with a population of 53,406 persons. As of 2016, Uganda had a total of 259 urban centres with a total urban population of 7.5 million persons. Thus, 20.2 percent of the total population lived in urban areas. Kampala Capital City was the most populous urban centre with 1.5 million persons.

Table 2 gives the distribution of the population by age. The Table shows that the population of Uganda is quite young, with the proportion of children (below 15 years of age) being 47.9 percent, while the 'Older persons' (aged 60 years and above) constituted only 2.9 percent.

**Table 2: Population Distribution by Age, Sex, Residence, and Population Type, Uganda, 2014**

Age	Sex		Residence		Population Type		Total
	Male	Female	Rural	Urban	Household	Institutional	
0-4	3,173,950	2,957,078	4,950,513	1,180,515	6,107,155	23,873	6,131,028
5-9	2,834,456	2,717,222	4,557,328	994,350	5,532,230	19,448	5,551,678
10-14	2,462,789	2,457,654	4,024,478	895,965	4,850,926	69,517	4,920,443
15-19	1,917,797	2,038,836	3,052,854	903,779	3,850,134	106,499	3,956,633
20-24	1,442,455	1,743,137	2,263,734	921,858	3,093,846	91,746	3,185,592
25-29	1,143,467	1,342,709	1,743,019	743,157	2,434,180	51,996	2,486,176
30-34	908,447	1,043,292	1,429,283	522,456	1,914,351	37,388	1,951,739
35-39	726,355	809,482	1,148,883	386,954	1,512,237	23,600	1,535,837
40-44	617,034	655,383	991,874	280,543	1,252,338	20,079	1,272,417
45-49	452,081	469,043	728,958	192,166	909,783	11,341	921,124
50-54	371,126	436,977	657,004	151,099	797,368	10,735	808,103
55-59	224,765	255,519	394,952	85,332	475,744	4,540	480,284
60-64	195,283	244,770	369,504	70,549	434,218	5,835	440,053
65-69	136,107	165,043	257,208	43,942	299,351	1,799	301,150
70-74	115,862	161,374	237,097	40,139	273,582	3,654	277,236
75-79	69,095	81,378	128,636	21,837	149,567	906	150,473
80-84	51,871	79,398	110,736	20,533	127,984	3,285	131,269
85-89	21,572	30,204	43,246	8,530	50,735	1,041	51,776
90-94	15,125	22,046	29,989	7,182	34,339	2,832	37,171
95 and above	18,212	26,256	37,186	7,282	41,231	3,237	44,468
<b>Total</b>	<b>16,897,849</b>	<b>17,736,801</b>	<b>27,156,482</b>	<b>7,478,168</b>	<b>34,141,299</b>	<b>493,351</b>	<b>34,634,650</b>

## Characteristics of the Population

About 87 percent of the boys and girls of primary school going age (6-12 years) were attending school, while about 1 in every 10 children of primary school going age children had never been school. The Illiteracy status Rate was 72 percent among persons aged 10 years and above. Out of the 17.7 million persons of working age (aged 14 to 64 years), 13.8 million (78 percent) were working in the (Labour Force), with the most common occupation being subsistence farming (65%).

Vulnerability can be assessed at personal and household level. At personal level, vulnerability is a state of being in which a person is likely to be in a risky situation, suffering significant physical, emotional, or mental harm that may result in his/her human rights not being fulfilled (MoGLSD, 2004). The 2014 Census measured some of the dimensions of Child Vulnerability. The results show high levels of vulnerability as highlighted below;

- One in every eight (12.5%) of children aged 6 – 12 Years were not in school;
- Two out of every 25 (8%) children less than 18 years of age were orphaned;
- One in every 16 (6% ) of the girls aged 12 to 17 years had already given birth;
- One in every 15 (6.5%) of the girls aged 12 – 17 had ever been in a marriage union;
- Seven out of every 10 Children (70%) aged less than five years did not have a Birth certificate.

There was a general improvement in the demographics of the population with the Total Fertility Rate falling to 5.8 children per woman while the infant Mortality Rate decreased to 53 deaths per 1,000 live births. The Life Expectancy at Birth also increased to 63.3 years

## Characteristics of the Households

The household population consisted of (99 percent of the total population.) The Census 2014 enumerated a total of 7.3 million households with a population of 34.1 million .This gave an Average Household Size of 4.7.

The 'Tadooba' remained the most common source of lighting being used by 52 percent of the households. Only one in every five households (20%) had access to electricity. On the other hand, Wood fuel was the most common fuel used for cooking, with only six percent (one in every 16) of the households using other fuels. Sanitation remains a challenge with only thirty percent of the households with unimproved toilet facilities. About 600,000 households did not have any toilet facility at all.

The majority of the households (69 percent) derived their livelihood from subsistence farming. Only 27% of the households depended on earned income. One in every nine households (11%) were having only one meal per day (for adults). Some of the households (11%) received remittances from abroad in cash or in kind. More than two thirds of the households (69%) had at least one member owning a Mobile phone. Ownership of a Mobile among persons aged 10 years and above was at 38 percent. The radio remains a dominant source of information and about 60 percent of the households owned a radio.

## **Housing Conditions**

The housing sector recorded a general improvement. Overall, 67 percent of households in Uganda resided in detached dwellings. However, nearly half (47%) households resided in dwellings with only one room for sleeping. There was also significant improvement in the materials used for construction of the dwellings. About 44% of the households resided in dwellings constructed with permanent wall material. The equivalent shares for roof and floor were 70 and 34 percent respectively.

## **Agricultural Activities**

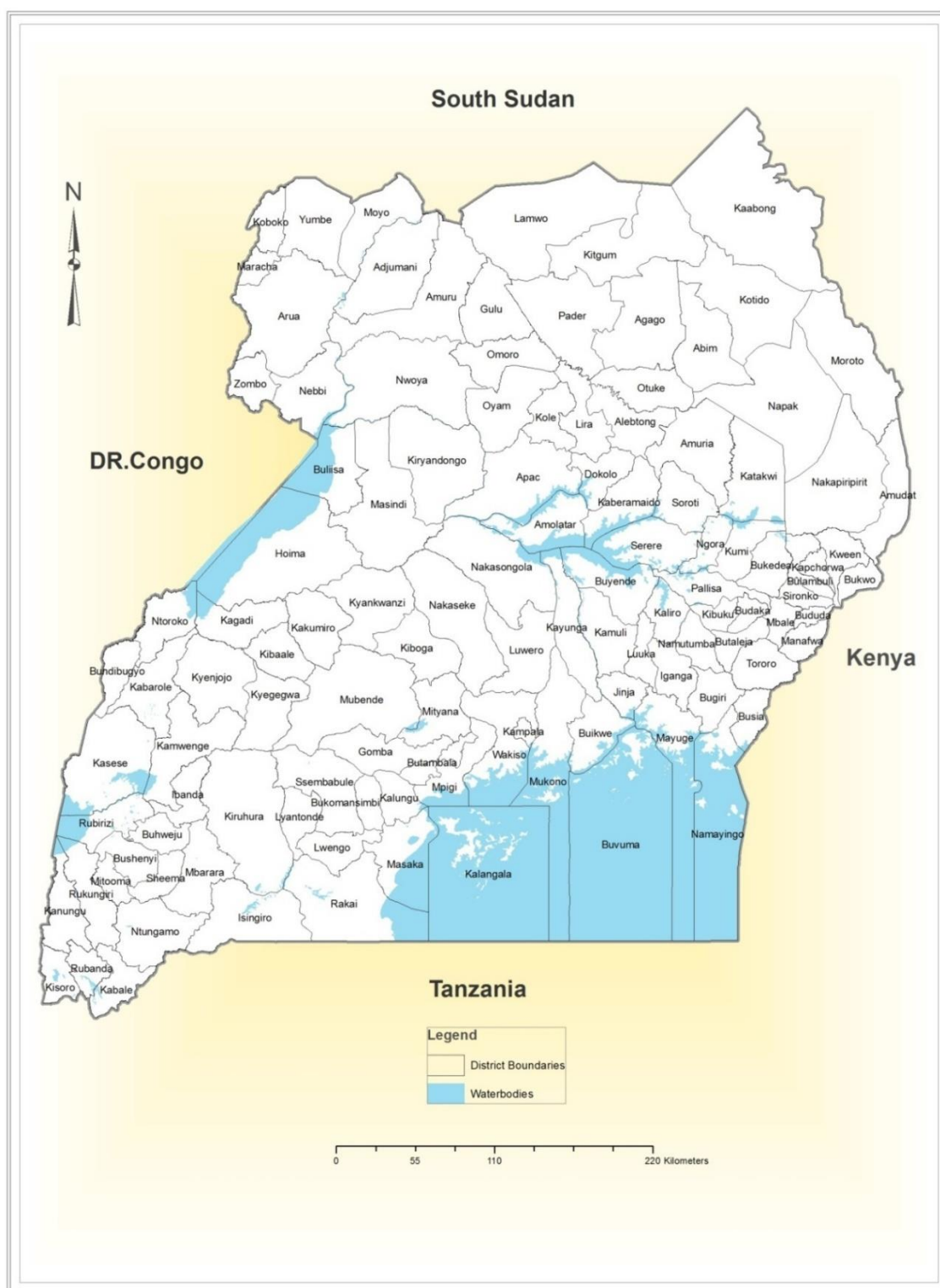
Agriculture has remained a dominant sector in the economy. The Census revealed that a total of 5.8 million households engage in agriculture. More than two thirds (69 percent) of households derived their livelihoods from subsistence farming as the main source of earning. In terms of employment, the majority of the working population (65 percent) were subsistence farmers.

## POPULATION SIZE

**Table 3: Total population by age group and sex, Manafwa District, 2014**

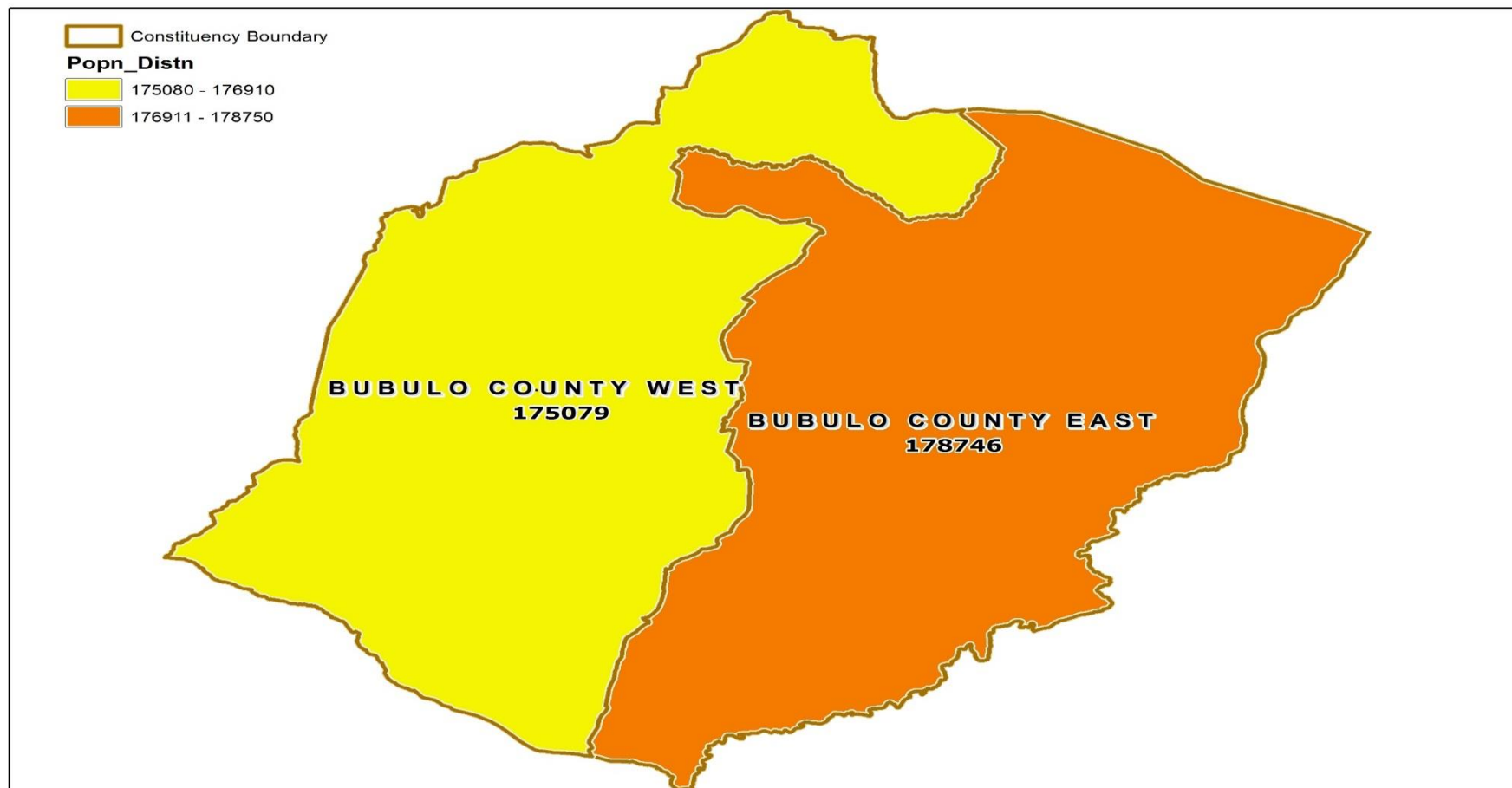
Age group	Male	Female	Total
0-9	64,654	61,294	125,948
10-19	46,024	46,998	93,022
20-39	35,748	41,496	77,244
40-59	18,903	20,208	39,111
60+	8,251	10,249	18,500
<b>District</b>	<b>173,580</b>	<b>180,245</b>	<b>353,825</b>

Map 1: Districts of Uganda as of 1st July 2016

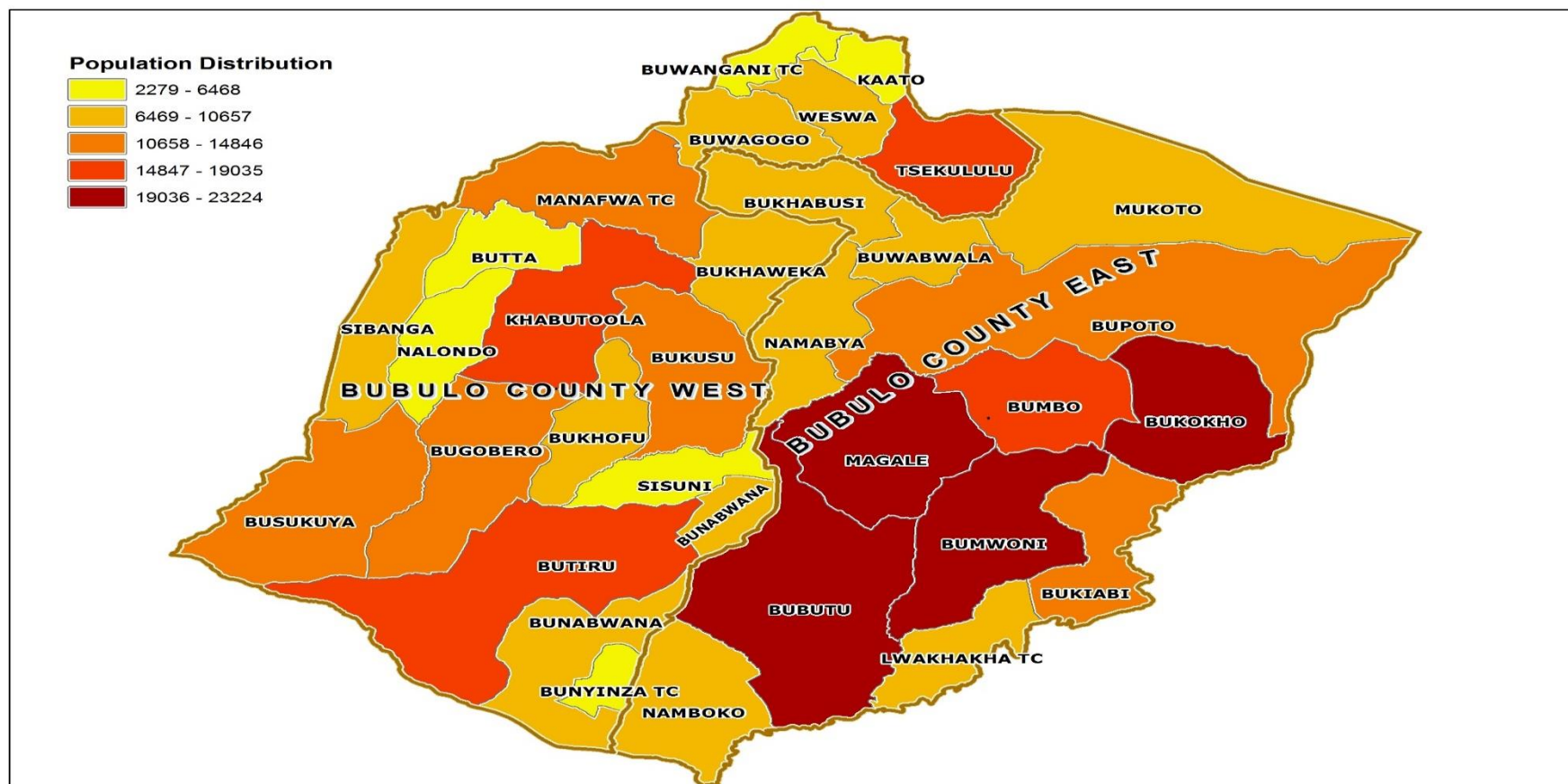




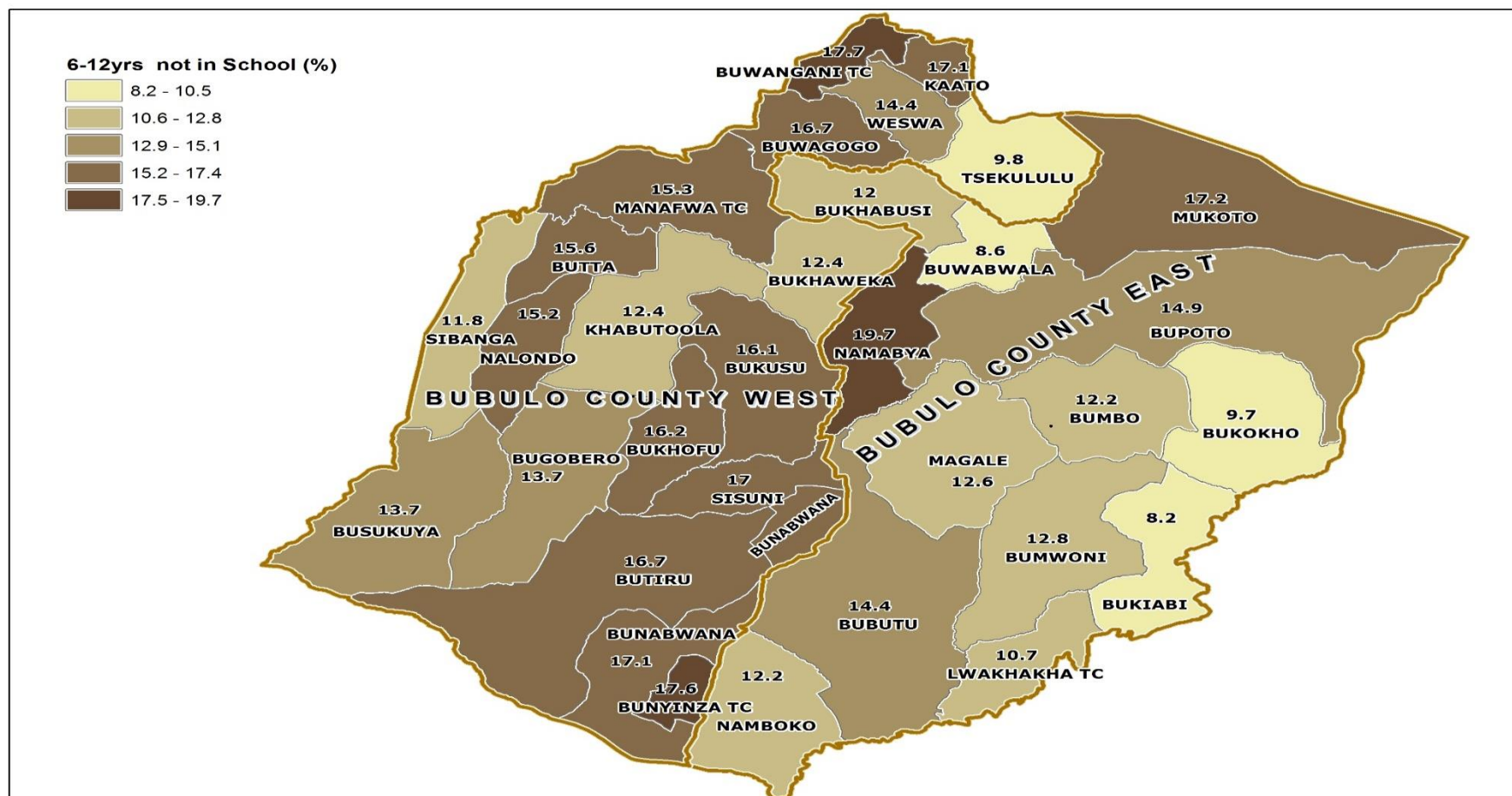
Map 2: Manafwa District Parliamentary Constituencies as of 1st July, 2016



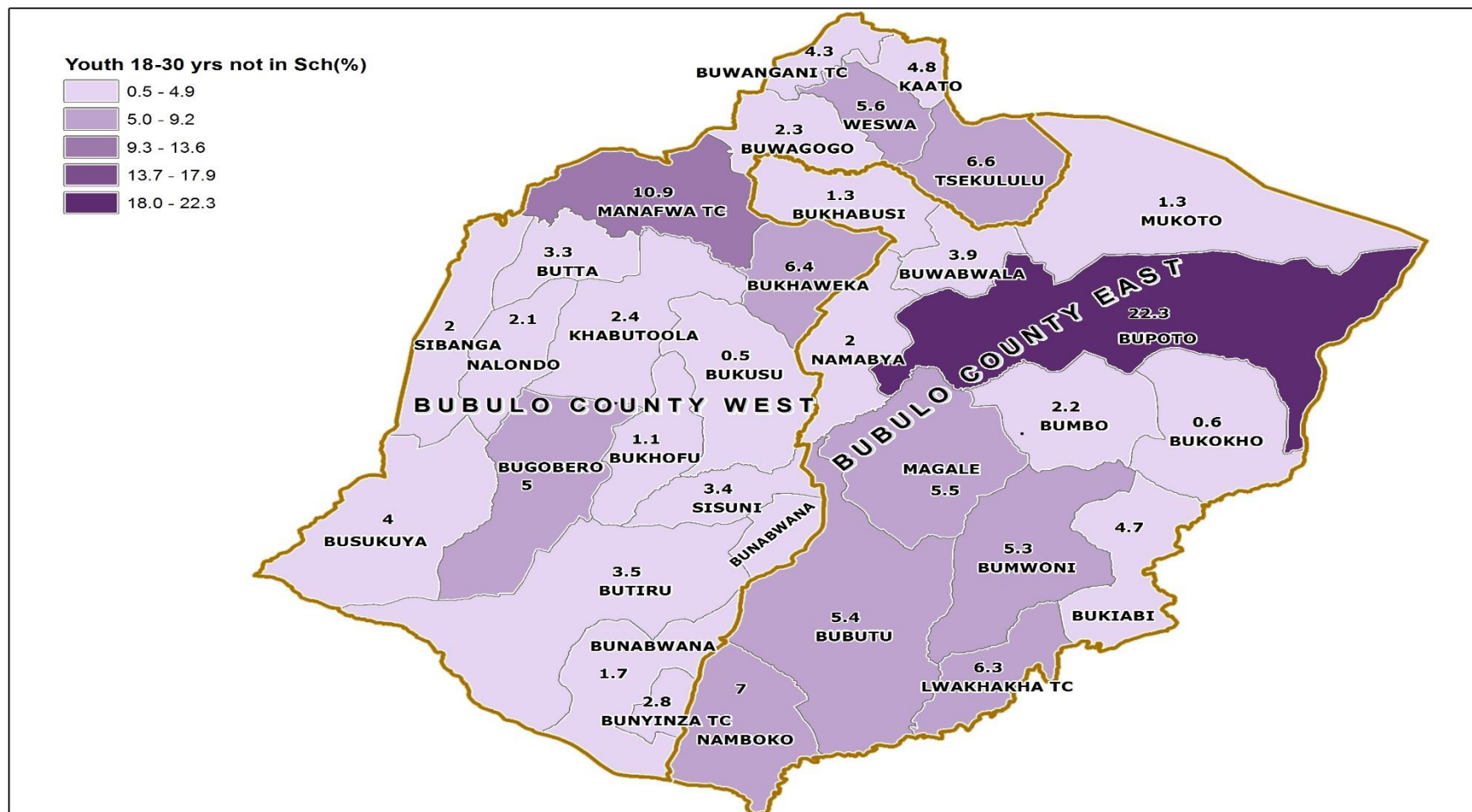
Map 3: Distribution of Population by Sub-county; Manafwa District, 2014



Map 4: Percentage Distribution of Population Aged 6-12 Years Not in School; Manafwa District, 2014

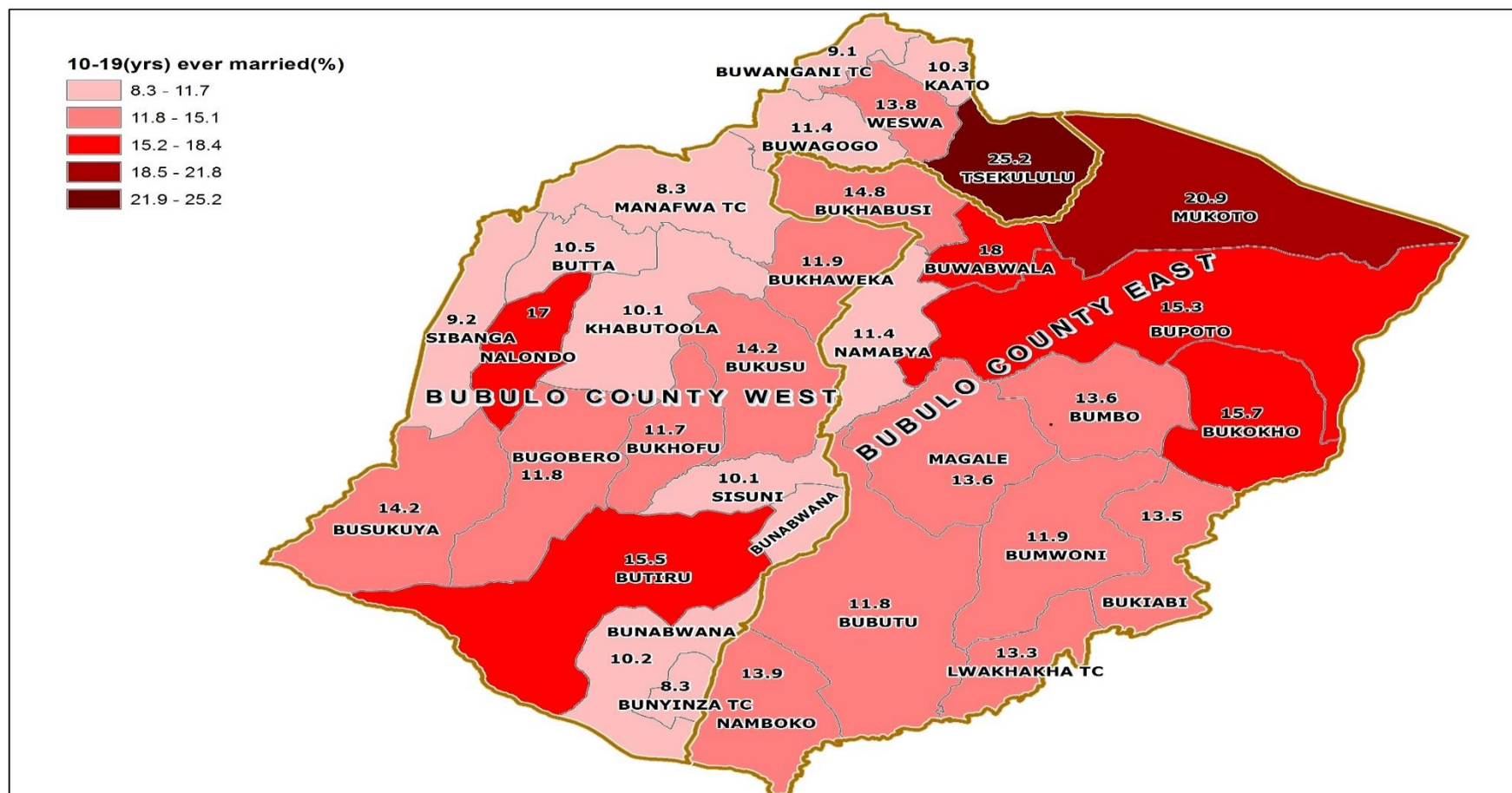


Map 5: Percentage Distribution of Youth Population aged 18-30 Years, Not in School and Not working; Manafwa District, 2014

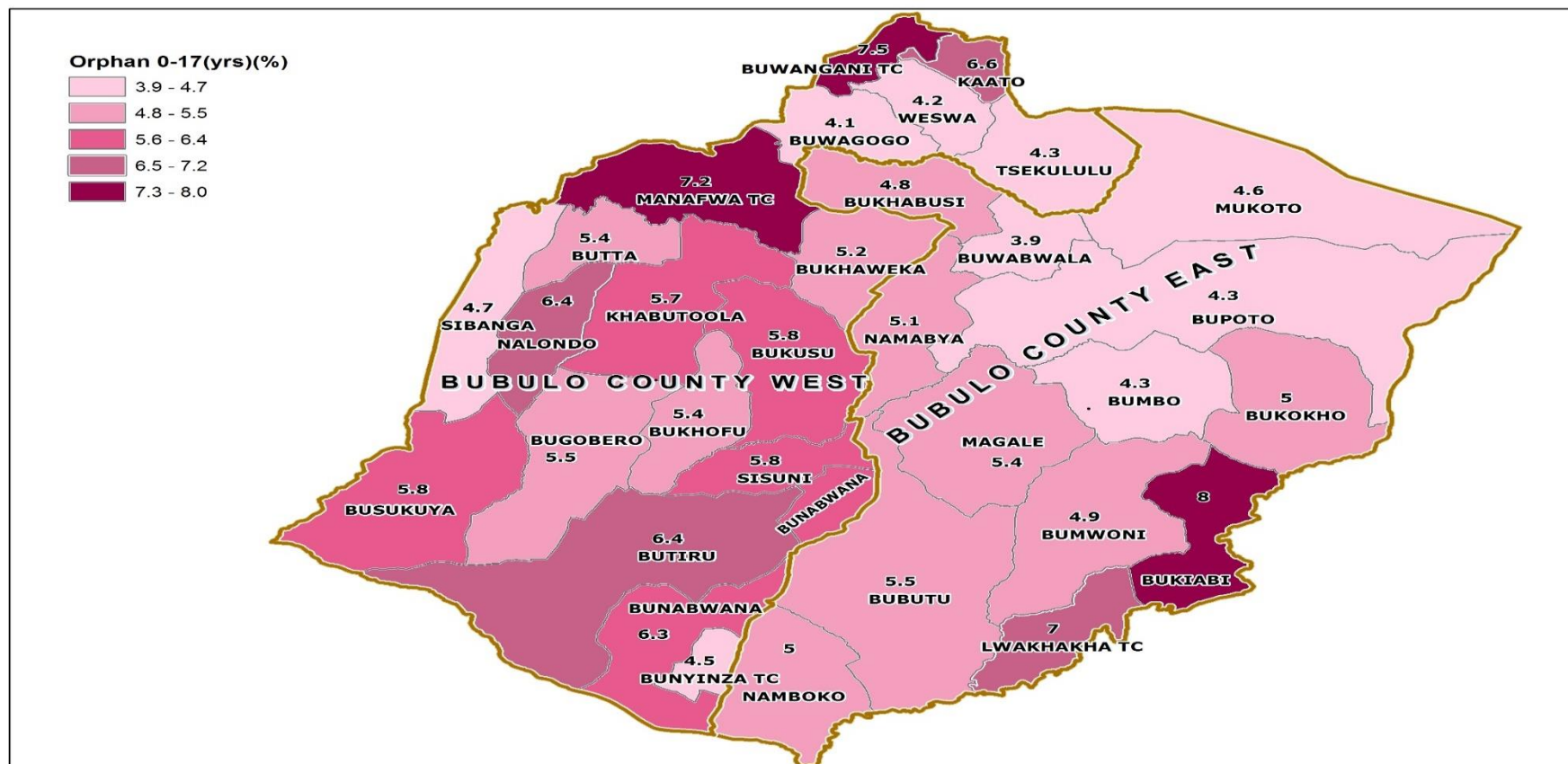




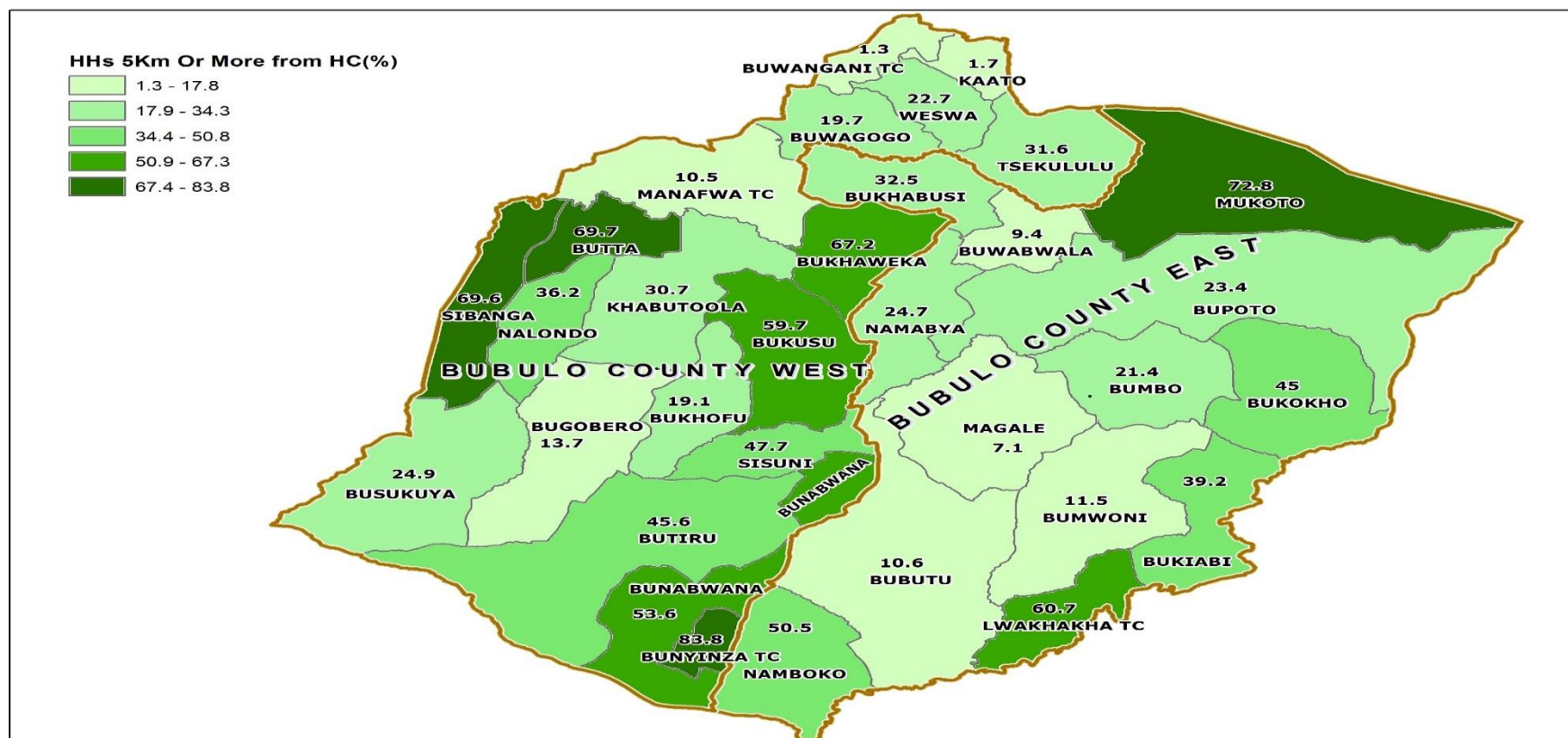
Map 6: Percentage Distribution of Population aged 10-19 Years, Ever Married; Manafwa District, 2014



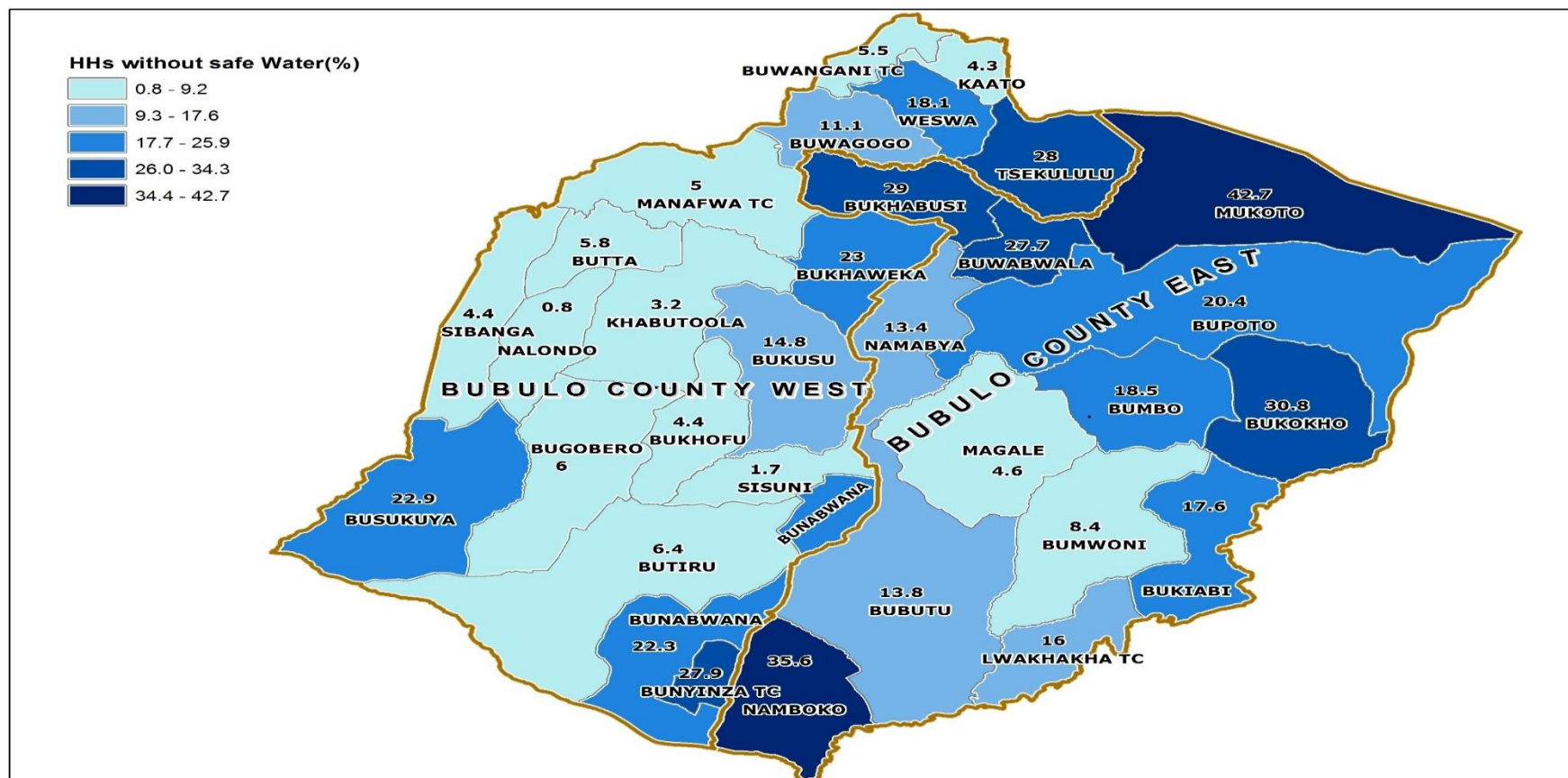
Map 7: Percentage Distribution of Orphans aged 0-17 Years; Manafwa District, 2014



Map 8: Percentage Distribution of Households 5 Km and Over to the nearest Public Health Facility; Manafwa District, 2014

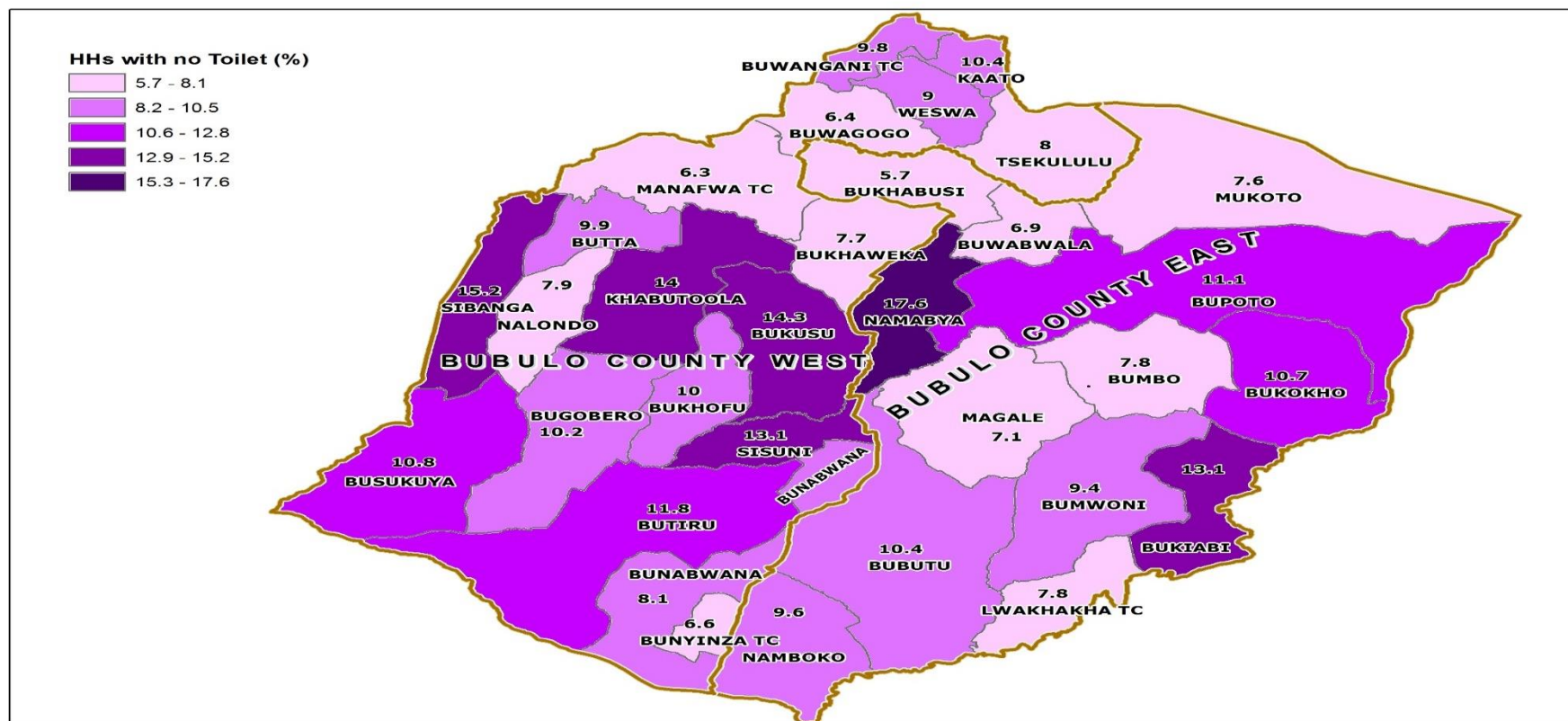


Map 9: Percentage Distribution of Households without access to Safe Water; Manafwa District, 2014

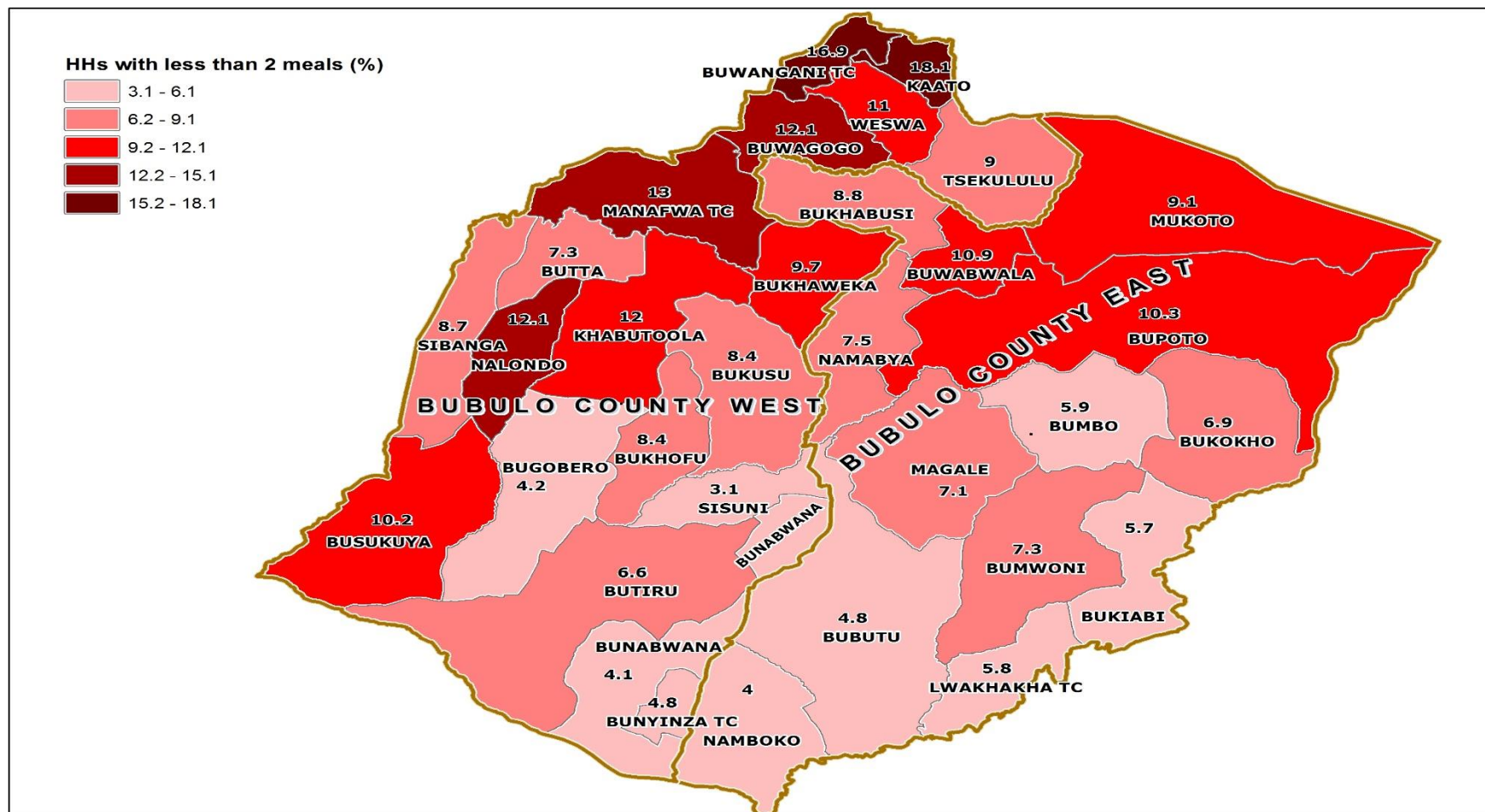




Map 10: Percentage Distribution of Households with no Toilet facility; Manafwa District, 2014



Map 11: Percentage Distribution of Households having less than 2 meals a day; Manafwa District, 2014



## **AREA SPECIFIC PROFILES**

## MANAFWA DISTRICT

### LIST OF TABLES

- 1 Population
- 2 Education
- 3 Illiteracy status
- 4 Ownership of a Birth Certificate
- 5 Parental Survival and Orphan Hood
- 6 Disability
- 7 Marriage and Child Bearing
- 8 Working Status
- 9 Use of ICT
- 10 Housing Conditions
- 11 Access to Community Services
- 12 Household Health and Hygiene
- 13 Household Assets
- 14 Other Household Characteristics
- 15 Household Based Agricultural Activities

**1: POPULATION**

<b>1.1: Population Size</b>	<b>Number</b>	<b>Percent</b>
Total population	353,825	
Total male population	173,580	49.1
Total female population	180,245	50.9
sex ratio (males per 100 females)	96.3	
<b>1.2: Households</b>	<b>Number</b>	<b>Percent</b>
Total households	72,815	
Households headed by males	60,072	82.5
Households headed by females	12,743	17.5
Households headed by children (aged 10-17)	243	0.3
Households headed by youth (aged 18-30)	16,576	22.8
Households headed by older persons (aged 60 and above)	14,693	20.2
<b>1.3: Population by Age groups</b>	<b>Number</b>	<b>Percent</b>
Population aged 0-17 years	203,558	57.7
Population aged 18-30 years	65,039	18.4
Population aged 31-59 years	65,769	18.6
Population aged 60 years and over	18,452	5.2
<b>1.4: Population by Special Age groups</b>	<b>Number</b>	<b>Percent</b>
Population aged Less than one Year	12,860	3.6
Population aged 0-4 Years	64,990	18.4
Population aged 0-8 Years	114,685	32.5
Population aged 2-8 Years	89,661	25.4
Population aged 2-17 Years	178,534	50.6
Population aged 6-12 Years	80,941	22.9
Population aged 6-15 Years	110,009	31.2
Population aged 10-15 Years	61,149	17.3
Population aged 10-17 Years	77,702	22.0
Population aged 15-24 Years	67,239	19.1
Population aged 16-64 Years	153,077	43.4
Population aged 15-29 Years	86,246	24.4
Population aged 2 Years and Over	327,794	92.9
Population aged 10 Years and Over	226,962	64.3
Population aged 15 Years and Over	174,338	49.4
Population aged 18 Years and Over	149,260	42.3
Population aged 20 Years and Over	134,428	38.1
Population aged 65 Years and over	12,736	3.6

**2: EDUCATION**

<b>2.1: Non School Attendance of</b>	<b>Number</b>	<b>Percent</b>
Persons aged 6-15 not attending school	8,084	7.3
Males aged 6-15 not attending school	4,355	7.9
Females aged 6-15 not attending school	3,729	6.8
<b>2.2: Persons Attending Primary school</b>	<b>Number</b>	<b>Percent</b>
Persons aged 6-12 attending primary school	69,994	86.5
Males aged 6-12 attending primary school	34,946	85.5
Females aged 6-12 attending primary school	35,048	87.5
<b>2.3: Persons Attending Secondary school</b>	<b>Number</b>	<b>Percent</b>
Persons aged 13-18 attending secondary school	16,539	30.7
Males aged 13-18 attending secondary school	8,727	32.6
Females aged 13-18 attending secondary school	7,812	28.9
<b>2.4: Persons Not in School and Highest Level Completed is below S.4</b>	<b>Number</b>	<b>Percent</b>
Persons aged 15and above whose highest level of education completed is below S.4	109,863	89.0
Males aged 15and above whose highest level of education completed is below S.4	49,110	85.6
Females aged 15and above whose highest level of education completed is below S.4	60,753	92.0
<b>2.5: Persons Not in School and Highest Level Completed is "O" Level</b>	<b>Number</b>	<b>Percent</b>
Persons aged 18and above whose highest level of education completed is "O" level (S.4)	7,188	4.8
Males aged 18and above whose highest level of education completed is "O" level (S.4)	4,027	5.8
Females aged 18and above whose highest level of education completed is "O" level (S.4)	3,161	4.0
<b>2.6:Persons Not in School and Highest Level Completed is "A" Level</b>	<b>Number</b>	<b>Percent</b>
Persons aged 20and above whose highest level of education completed is "A" level (S.6)	1,214	0.9
Males aged 20and above whose highest level of education completed is "A" level (S.6)	913	1.5
Females aged 20and above whose highest level of education completed is "A" level (S.6)	301	0.4

**3: ILLITERACY STATUS**

<b>3.1: Persons aged 18 years and above</b>	<b>Number</b>	<b>Percent</b>
Persons aged 18 years and above who are illiterate	50,683	34.0
Males aged 18 years and above who are illiterate	18,859	27.0
Females aged 18 years and above who are illiterate	31,824	40.0
<b>3.2: Other age groups</b>	<b>Number</b>	<b>Percent</b>
Persons aged 10-17 years who are illiterate	20,808	26.8
Persons aged 18-30 years who are illiterate	13,916	21.4
Persons aged 60 years and above who are illiterate	11,260	61.0

**4: OWNERSHIP OF A BIRTH CERTIFICATE**

<b>4.1: Children with Birth Certificates</b>	<b>Number</b>	<b>Percent</b>
Children less than 1 year who have a Birth Certificate	1,664	12.9
Children less than 5 years who have a Birth Certificate	10,270	15.8
Children 0-8 years who have a Birth Certificate	18,800	16.4
Children 0-17 years who have a Birth Certificate	33,307	17.0

**5: PARENTAL SURVIVAL AND ORPHANHOOD**

<b>5.1: Children 0-8 years</b>	<b>Number</b>	<b>Percent</b>
Children 0-8 years who have lost one parent	2,894	2.5
Children 0-8 years who have lost both parents	166	0.1
Children 0-8 years who have lost at least a parent (total number of orphans)	3,060	2.7
Children 0-8 years who have both parents	111,625	97.3
<b>5.2: All children (0-17 years)</b>	<b>Number</b>	<b>Percent</b>
Children 0-17 years who have lost one parent	10,208	5.0
Children 0-17 years who have lost both parents	835	0.4
Children 0-17 years who have lost at least a parent (total number of orphans)	11,043	5.4
Children 0-17 years who have both parents	192,515	94.6

**6: DISABILITY**

<b>6.1: Persons with a disability</b>	<b>Number</b>	<b>Percent</b>
Persons aged 2 years and above with a disability	75,722	23.1
Persons 2 years and above with a seeing disability	30,319	9.2
Persons 2 years and above with a hearing disability	17,910	5.5
Persons 2 years and above with a walking disability	25,728	7.8
Persons 2 years and above with a remembering disability	45,274	13.8
Persons 2 years and above with multiple disabilities	23,781	33.0
Children 2-17 years with a disability	26,366	14.8
Youth 18-30 years with a disability	12,380	19.0
Older persons 60 years and above with a disability	13,279	72.0

**7: MARRIAGE AND CHILDBEARING**

<b>7.1: Marital status of the population</b>	<b>Number</b>	<b>Percent</b>
Persons aged 10 and above who are married	60,091	50.7
Persons aged 18 and above who are married	57,701	72.6
Females aged 50 and above who are widowed	6,344	34.8
Females aged 10-17 who have ever been married	2,585	6.6
Females aged 10-19 who have ever been married	6,320	13.5

<b>7.2: Females who have had a birth</b>	<b>Number</b>	<b>Percent</b>
Females aged 12-17 who have given birth	1,725	6.1
Females aged 12-19 who have given birth	4,736	13.2

**8: WORKING STATUS**

<b>8.1: Working persons</b>	<b>Number</b>	<b>Percent</b>
Persons aged 10-15 who were working	21,101	34.5
Persons aged 10-17 who were working	28,647	36.9
Persons aged 18-30 who were working	52,035	80.0
Persons aged 16-64 who were working	128,185	83.7
Persons aged 18 years and above who were working	130,014	87.1
Persons aged 60 years and above who were working	14,709	79.7

<b>8.2: Youths Not working and not in school</b>		
Youths (Persons aged 18-30) who were neither working nor in school	2,766	4.3



**9: USE OF ICT**

<b>9.1: Mobile phone ownership (10 and above years)</b>	<b>Number</b>	<b>Percent</b>
Persons aged 10 years and above that own at least one mobile phone	64,631	28.5
Males aged 10 years and above that own at least one mobile phone	38,630	35.6
Females aged 10 years and above that own at least one mobile phone	26,001	22.0
<b>9.2: Mobile phone ownership (18-30 years)</b>	<b>Number</b>	<b>Percent</b>
Persons aged 18-30 years and above that own at least one mobile phone	25,522	39.2
Males aged 18-30 years and above that own at least one mobile phone	15,044	49.8
Females aged 18-30 years and above that own at least one mobile phone	10,478	30.1
<b>9.3: Internet Usage (10 and above years)</b>	<b>Number</b>	<b>Percent</b>
Persons aged 10 years and above that use internet	10,283	4.5
Males aged 10 years and above that use internet	6,808	6.3
Females aged 10 years and above that use internet	3,475	2.9
<b>9.4: Internet Usage (18-30 years)</b>	<b>Number</b>	<b>Percent</b>
Persons aged 18-30 years that use internet	5,514	8.5
Males aged 18-30 years that use internet	3,533	11.7
Females aged 18-30 years that use internet	1,981	5.7

**10: HOUSING CONDITIONS**

<b>10.1: Construction Materials For the Dwelling Units</b>	<b>Number</b>	<b>Percent</b>
Households living in dwelling units constructed using permanent roof materials	63,310	86.95
Households living in dwelling units constructed using permanent wall materials	15,077	20.71
Households living in dwelling units constructed using permanent floor materials	9,127	12.53
<b>10.2: Status of Dwelling Units</b>	<b>Number</b>	<b>Percent</b>
Households living in semi-permanent dwelling units	57,372	78.79
Households living in temporary dwelling units	8,481	11.65

**11: ACCESS TO COMMUNITY SERVICES**

<b>11.1: Access to a Primary school</b>	<b>Number</b>	<b>Percent</b>
Households that are 5 km or more to the nearest primary school, <u>whether public or private</u>	5,177	7.1
Households that are 5 km or more to the nearest <u>public</u> primary school	7,799	10.7
<b>11.2: Access to a Secondary school</b>	<b>Number</b>	<b>Percent</b>
Households that are 5 km or more to the nearest secondary school, <u>whether public or private</u>	19,521	26.8
Households that are 5 km or more to the nearest <u>public</u> secondary school	27,178	37.3
<b>11.3: Access to a Health Facility</b>	<b>Number</b>	<b>Percent</b>
Households that are 5 km or more to the nearest health facility, <u>whether public or private</u>	12,799	17.6
Households that are 5 km or more to the nearest <u>public</u> health facility	22,736	31.2
<b>11.4: Access to a Police post /Police station</b>	<b>Number</b>	<b>Percent</b>
Households that are 5 km or more to the nearest Police Post/Police Station	20,402	28.0

**12: HOUSEHOLD HEALTH AND HYGIENE**

<b>12.1: Ownership of Mosquito nets</b>	<b>Number</b>	<b>Percent</b>
Households that own at least a mosquito net	71,113	97.7
Households that own at least a mosquito net that was received free (Government /NGO)	70,466	99.1
<b>12.2: Source Of Water For Drinking</b>	<b>Number</b>	<b>Percent</b>
Households that have access to piped water	5,260	7.2
Households that use a bore hole	15,392	21.1
<b>12.3: Ownership of a Toilet facility</b>	<b>Number</b>	<b>Percent</b>
Households without any toilet facility	5,730	7.9
<b>12.4: Other environmental conditions</b>	<b>Number</b>	<b>Percent</b>
Households that <u>properly</u> dispose off solid waste	17,156	23.6
Households which are not living in decent dwellings	72,398	99.4

**13: HOUSEHOLD ASSETS**

<b>13.1: Owner occupied Dwellings</b>	<b>Number</b>	<b>Percent</b>
Households that are owner occupied	67,248	92.4
Male headed households that are owner occupied	55,972	93.2
Female headed households that are owner occupied	11,276	88.5
<b>13.2: Movable Assets</b>	<b>Number</b>	<b>Percent</b>
Households that own a television	3,912	5.4
Households that own a computer	590	0.8
Households that own a bicycle	16,921	23.2
Households that own a radio	43,062	59.1

**14: OTHER HOUSEHOLD CHARACTERISTICS**

<b>14.1: Main source of information</b>	<b>Number</b>	<b>Percent</b>
Households whose main source of information is a radio	45,103	61.9
Households whose main source of information is a community announcer	2,197	3.0
Households whose main source of information is a telephone	2,700	3.7
<b>14.2: Household Economy and Welfare</b>	<b>Number</b>	<b>Percent</b>
Households that received remittances from abroad in the last 12 months	20,742	28.5
Households where any member possesses a bank account	8,409	11.5
Households that depend on subsistence farming as a main source of livelihood	62,969	86.5
Households with at least one member engaged in a non-agricultural household based enterprise	45,695	90.2
Households where (members aged 5 years and above) consume less than two meals in a day	5,964	8.2
<b>14.3: Source of Energy for lighting</b>	<b>Number</b>	<b>Percent</b>
Households that have access to electricity	3,402	4.7
Households that use Tadooba for lighting	56,740	77.9

**15: HOUSEHOLD BASED AGRICULTURAL ACTIVITIES**

<b>15.1: Household based Agricultural activities</b>	<b>Number</b>	<b>Percent</b>
Households engaged in crop growing	68,920	94.7
Households engaged in maize growing	59,481	81.7
Households engaged in coffee growing	17,376	23.9
Households engaged in growing of beans	62,776	86.2
Households engaged in growing of millet	9,279	12.7
Households engaged in growing of sweet potatoes	23,357	32.1
Households engaged in growing of matooke	37,324	51.3
Households engaged livestock farming	58,043	79.7
Households engaged in either crop growing or livestock farming	70,121	96.3

## **BUBULO COUNTY WEST CONSTITUENCY**

### **LIST OF TABLES**

- |    |   |
|----|---|
| 1  | Population                              |
| 2  | Education                               |
| 3  | Illiteracy Status                       |
| 4  | Ownership of a Birth Certificate        |
| 5  | Parental Survival and Orphan hood       |
| 6  | Disability                              |
| 7  | Marriage and Child Bearing              |
| 8  | Working Status                          |
| 9  | Use of ICT                              |
| 10 | Housing and Household Characteristics   |
| 11 | Access to Community Services            |
| 12 | Household Health and Hygiene            |
| 13 | Household Assets                        |
| 14 | Other Household Characteristics         |
| 15 | Household Based Agricultural Activities |

**1: POPULATION**

<b>1.1: Population Size</b>	<b>Number</b>	<b>Percent</b>
Total population	175,079	
Total male population	85,771	49.0
Total female population	89,308	51.0
sex ratio (males per 100 females)	96.0	
<b>1.2: Households</b>	<b>Number</b>	<b>Percent</b>
Total households	36,343	
Households headed by males	29,682	81.7
Households headed by females	6,661	18.3
Households headed by children (aged 10-17)	114	0.3
Households headed by youth (aged 18-30)	8,102	22.3
Households headed by older persons (aged 60 and above)	7,548	20.8
<b>1.3: Population by Age groups</b>	<b>Number</b>	<b>Percent</b>
Population aged 0-17 years	99,165	56.8
Population aged 18-30 years	32,755	18.8
Population aged 31-59 years	33,114	19.0
Population aged 60 years and over	9,510	5.4
<b>1.4: Population by Special Age groups</b>	<b>Number</b>	<b>Percent</b>
Population aged Less than one Year	6,306	3.6
Population aged 0-4 Years	31,386	18.0
Population aged 0-8 Years	55,011	31.5
Population aged 2-8 Years	42,758	24.5
Population aged 2-17 Years	86,912	49.8
Population aged 6-12 Years	39,002	22.3
Population aged 6-15 Years	53,524	30.7
Population aged 10-15 Years	30,241	17.3
Population aged 10-17 Years	38,712	22.2
Population aged 15-24 Years	34,201	19.6
Population aged 16-64 Years	77,260	44.3
Population aged 15-29 Years	43,609	25.0
Population aged 2 Years and Over	162,291	93.0
Population aged 10 Years and Over	114,091	65.4
Population aged 15 Years and Over	88,130	50.5
Population aged 18 Years and Over	75,379	43.2
Population aged 20 Years and Over	67,692	38.8
Population aged 65 Years and over	6,590	3.8

**2: EDUCATION**

<b>2.1: Non School attendance of</b>	<b>Number</b>	<b>Percent</b>
Persons aged 6-15 not attending school	3,970	7.4
Males aged 6-15 not attending school	2,124	7.9
Females aged 6-15 not attending school	1,846	6.9
<b>2.2: Persons attending Primary school</b>	<b>Number</b>	<b>Percent</b>
Persons aged 6-12 attending primary school	33,364	85.5
Males aged 6-12 attending primary school	16,584	84.4
Females aged 6-12 attending primary school	16,780	86.7
<b>2.3: Persons Attending Secondary school</b>	<b>Number</b>	<b>Percent</b>
Persons aged 13-18 attending secondary school	8,589	31.5
Males aged 13-18 attending secondary school	4,498	33.2
Females aged 13-18 attending secondary school	4,091	29.8
<b>2.4: Persons Not in School and Highest Level Completed is below S.4</b>	<b>Number</b>	<b>Percent</b>
Persons aged 15and above whose highest level of education completed is below S.4	54,497	88.8
Males aged 15and above whose highest level of education completed is below S.4	24,595	85.6
Females aged 15and above whose highest level of education completed is below S.4	29,902	91.7
<b>2.5:Persons Not in School and Highest Level Completed is "O" Level</b>	<b>Number</b>	<b>Percent</b>
Persons aged 18and above whose highest level of education completed is "O" level (S.4)	3,540	4.7
Males aged 18and above whose highest level of education completed is "O" level (S.4)	1,985	5.6
Females aged 18and above whose highest level of education completed is "O" level (S.4)	1,555	3.9
<b>2.6:Persons Not in School and Highest Level Completed is "A" Level</b>	<b>Number</b>	<b>Percent</b>
Persons aged 20and above whose highest level of education completed is "A" level (S.6)	633	0.9
Males aged 20and above whose highest level of education completed is "A" level (S.6)	463	1.5
Females aged 20and above whose highest level of education completed is "A" level (S.6)	170	0.5

**3: ILLITERACY STATUS**

<b>3.1: Persons aged 18 years and above</b>	<b>Number</b>	<b>Percent</b>
Persons aged 18 years and above who are illiterate	26,021	34.5
Males aged 18 years and above who are illiterate	9,718	27.6
Females aged 18 years and above who are illiterate	16,303	40.6
<b>3.2: Other age groups</b>	<b>Number</b>	<b>Percent</b>
Persons aged 10-17 years who are illiterate	10,538	27.2
Persons aged 18-30 years who are illiterate	6,949	21.2
Persons aged 60 years and above who are illiterate	5,750	60.5

**4: OWNERSHIP OF A BIRTH CERTIFICATE**

<b>4.1: Children with Birth Certificates</b>	<b>Number</b>	<b>Percent</b>
Children less than 1 year who have a Birth Certificate	897	14.2
Children less than 5 years who have a Birth Certificate	5,369	17.1
Children 0-8 years who have a Birth Certificate	9,715	17.7
Children 0-17 years who have a Birth Certificate	17,233	18.1

**5: PARENTAL SURVIVAL AND ORPHANHOOD**

<b>5.1: Children 0-8 years</b>	<b>Number</b>	<b>Percent</b>
Children 0-8 years who have lost one parent	1,365	2.5
Children 0-8 years who have lost both parents	72	0.1
Children 0-8 years who have lost at least a parent (total number of orphans)	1,437	2.6
Children 0-8 years who have both parents	53,574	97.4
<b>5.2: All children (0-17 years)</b>	<b>Number</b>	<b>Percent</b>
Children 0-17 years who have lost one parent	5,182	5.2
Children 0-17 years who have lost both parents	409	0.4
Children 0-17 years who have lost at least a parent (total number of orphans)	5,591	5.6
Children 0-17 years who have both parents	93,574	94.4



**6: DISABILITY**

<b>6.1: Persons with a Disability</b>	<b>Number</b>	<b>Percent</b>
Persons aged 2 years and above with a disability	37,197	22.9
Persons 2 years and above with a seeing disability	15,826	9.8
Persons 2 years and above with a hearing disability	9,271	5.7
Persons 2 years and above with a walking disability	13,831	8.5
Persons 2 years and above with a remembering disability	21,314	13.1
Persons 2 years and above with multiple disabilities	12,418	35.3
Children 2-17 years with a disability	12,234	14.1
Youth 18-30 years with a disability	5,922	18.1
Older persons 60 years and above with a disability	6,968	73.3

**7: MARRIAGE AND CHILDBEARING**

<b>7.1: Marital status of the population</b>	<b>Number</b>	<b>Percent</b>
Persons aged 10 and above who are married	29,760	50.0
Persons aged 18 and above who are married	28,601	71.3
Females aged 50 and above who are widowed	3,401	36.0
Females aged 10-17 who have ever been married	1,249	6.4
Females aged 10-19 who have ever been married	3,073	13.1
<b>7.2: Females who have had a birth</b>	<b>Number</b>	<b>Percent</b>
Females aged 12-17 who have given birth	883	6.2
Females aged 12-19 who have given birth	2,353	12.9

**8: WORKING STATUS**

<b>8.1: Working persons</b>	<b>Number</b>	<b>Percent</b>
Persons aged 10-15 who were working	7,971	26.4
Persons aged 10-17 who were working	11,226	29.0
Persons aged 18-30 who were working	25,439	77.7
Persons aged 16-64 who were working	63,380	82.0
Persons aged 18 years and above who were working	64,994	86.2
Persons aged 60 years and above who were working	7,599	79.9
<b>8.2: Youths Not working and not in school</b>		
Youths (Persons aged 18-30) who were neither working nor in school	1,205	3.7

**9: USE OF ICT**

<b>9.1: Mobile phone ownership (10and above years)</b>	<b>Number</b>	<b>Percent</b>
Persons aged 10 years and above that own at least one mobile phone	33,130	29.0
Males aged 10 years and above that own at least one mobile phone	19,886	36.4
Females aged 10 years and above that own at least one mobile phone	13,244	22.3
<b>9.2: Mobile phone ownership (18-30 years)</b>	<b>Number</b>	<b>Percent</b>
Persons aged 18-30 years and above that own at least one mobile phone	13,119	40.1
Males aged 18-30 years and above that own at least one mobile phone	7,826	51.2
Females aged 18-30 years and above that own at least one mobile phone	5,293	30.3
<b>9.3: Internet Usage (10and above years)</b>	<b>Number</b>	<b>Percent</b>
Persons aged 10 years and above that use internet	4,867	4.3
Males aged 10 years and above that use internet	3,261	6.0
Females aged 10 years and above that use internet	1,606	2.7
<b>9.4: Internet Usage (18-30 years)</b>	<b>Number</b>	<b>Percent</b>
Persons aged 18-30 years and above that use internet	2,664	8.1
Males aged 18-30 years and above that use internet	1,731	11.3
Females aged 18-30 years and above that use internet	933	5.3

**10: HOUSING CHARACTERISTICS**

<b>10.1: Construction Materials for the Dwelling Units</b>	<b>Number</b>	<b>Percent</b>
Households living in dwelling units constructed using permanent roof materials	31,216	85.9
Households living in dwelling units constructed using permanent wall materials	8,004	22.0
Households living in dwelling units constructed using permanent floor materials	4,532	12.5
<b>10.2: Status of Dwelling Units</b>	<b>Number</b>	<b>Percent</b>
Households living in semi-permanent dwelling units	28,252	77.7
Households living in temporary dwelling units	4,464	12.3

**11: ACCESS TO COMMUNITY SERVICES**

<b>11.1: Access to a Primary school</b>	<b>Number</b>	<b>Percent</b>
Households that are 5 km or more to the nearest primary school, <u>whether public or private</u>	2,493	6.9
Households that are 5 km or more to the nearest <u>public</u> primary school	3,875	10.7
<b>11.2: Access to a Secondary school</b>	<b>Number</b>	<b>Percent</b>
Households that are 5 km or more to the nearest secondary school, <u>whether public or private</u>	10,484	28.8
Households that are 5 km or more to the nearest <u>public</u> secondary school	15,089	41.5
<b>11.3: Access to a Health Facility</b>	<b>Number</b>	<b>Percent</b>
Households that are 5 km or more to the nearest health facility, <u>whether public or private</u>	7,080	19.5
Households that are 5 km or more to the nearest <u>public</u> health facility	12,736	35.0
<b>11.4: Access to a Police post/ Police station</b>	<b>Number</b>	<b>Percent</b>
Households that are 5 km or more to the nearest Police Post/Police Station	9,145	25.2

**12: HOUSEHOLD HEALTH AND HYGIENE**

<b>12.1:Ownership of Mosquito nets</b>	<b>Number</b>	<b>Percent</b>
Households that own at least a mosquito net	35,570	97.9
Households that own at least a mosquito net that was received free (Government /NGO)	35,243	99.1
<b>12.2: Source of water for drinking</b>	<b>Number</b>	<b>Percent</b>
Households that have access to piped water	1,315	3.6
Households that use a bore hole	12,931	35.6
<b>12.3:Ownership of a Toilet facility</b>	<b>Number</b>	<b>Percent</b>
Households without any toilet facility	3,034	8.3
<b>12.4: Other environmental conditions</b>	<b>Number</b>	<b>Percent</b>
Households that properly dispose off solid waste	10,096	27.8
Households which are not living in decent dwellings	36,079	99.3

**13: HOUSEHOLD ASSETS**

<b>13.1: Owner occupied Dwellings</b>	<b>Number</b>	<b>Percent</b>
Households that are owner occupied	34,130	93.9
Male headed households that are owner occupied	28,158	94.9
Female headed households that are owner occupied	5,972	89.7
<b>13.2: Movable Assets</b>	<b>Number</b>	<b>Percent</b>
Households that own a television	2,126	5.8
Households that own a computer	283	0.8
Households that own a bicycle	9,977	27.5
Households that own a radio	21,673	59.6

**14: OTHER HOUSEHOLD CHARACTERISTICS**

<b>14.1: Main source of information</b>	<b>Number</b>	<b>Percent</b>
Households whose main source of information is a radio	23,062	63.5
Households whose main source of information is a community announcer	1,048	2.9
Households whose main source of information is a telephone	1,546	4.3
<b>14.2: Household Economy and Welfare</b>	<b>Number</b>	<b>Percent</b>
Households that received remittances from abroad in the last 12 months	9,944	27.4
Households where any member possesses a bank account	4,265	11.7
Households that depend on subsistence farming as a main source of livelihood	31,908	87.8
Households with at least one member engaged in a non-agricultural household based enterprise	22,653	90.2
Households where (all members aged 5 years and above) consume less than two meals in a day	3,396	9.3
<b>14.3: Source of Energy for lighting</b>	<b>Number</b>	<b>Percent</b>
Households that have access to electricity	1,950	5.4
Households that use Tadooba for lighting	29,275	80.6

**15: HOUSEHOLD BASED AGRICULTURAL ACTIVITIES**

<b>15.1: Household based Agricultural Activities</b>	<b>Number</b>	<b>Percent</b>
Households engaged in crop growing	34,678	95.4
Households engaged in maize growing	28,780	79.2
Households engaged in coffee growing	7,079	19.5
Households engaged in growing of beans	31,575	86.9
Households engaged in growing of millet	6,875	18.9
Households engaged in growing of sweet potatoes	11,399	31.4
Households engaged in growing of matooke	19,603	53.9
Households engaged livestock farming	29,204	80.4
Households engaged in either crop growing or livestock farming	35,226	96.9

## **BUBULO COUNTY EAST CONSTITUENCY**

### **LIST OF TABLES**

- |    |   |
|----|---|
| 1  | Population                              |
| 2  | Education                               |
| 3  | Illiteracy status                       |
| 4  | Ownership of a Birth Certificate        |
| 5  | Parental Survival and Orphan hood       |
| 6  | Disability                              |
| 7  | Marriage and Child Bearing              |
| 8  | Working Status                          |
| 9  | Use of ICT                              |
| 10 | Housing and Household Activities        |
| 11 | Access to Community Services            |
| 12 | Household Health and Hygiene            |
| 13 | Household Assets                        |
| 14 | Other Household Characteristics         |
| 15 | Household Based Agricultural Activities |

**1: POPULATION**

<b>1.1: Population Size</b>	<b>Number</b>	<b>Percent</b>
Total population	178,746	
Total male population	87,809	49.1
Total female population	90,937	50.9
sex ratio (males per 100 females)	96.6	
<b>1.2: Households</b>	<b>Number</b>	<b>Percent</b>
Total households	36,472	
Households headed by males	30,390	83.3
Households headed by females	6,082	16.7
Households headed by children (aged 10-17)	129	0.4
Households headed by youth (aged 18-30)	8,474	23.2
Households headed by older persons (aged 60 and above)	7,145	19.6
<b>1.3: Population by Age groups</b>	<b>Number</b>	<b>Percent</b>
Population aged 0-17 years	104,393	58.6
Population aged 18-30 years	32,284	18.1
Population aged 31-59 years	32,655	18.3
Population aged 60 years and over	8,942	5.0
<b>1.4: Special Age groups</b>	<b>Number</b>	<b>Percent</b>
Population aged Less than one Year	6,554	3.7
Population aged 0-4 Years	33,604	18.8
Population aged 0-8 Years	59,674	33.5
Population aged 2-8 Years	46,903	26.3
Population aged 2-17 Years	91,622	51.4
Population aged 6-12 Years	41,939	23.5
Population aged 6-15 Years	56,485	31.7
Population aged 10-15 Years	30,908	17.3
Population aged 10-17 Years	38,990	21.9
Population aged 15-24 Years	33,038	18.5
Population aged 16-64 Years	75,817	42.5
Population aged 15-29 Years	42,637	23.9
Population aged 2 Years and Over	165,503	92.8
Population aged 10 Years and Over	112,871	63.3
Population aged 15 Years and Over	86,208	48.4
Population aged 18 Years and Over	73,881	41.4
Population aged 20 Years and Over	66,736	37.4
Population aged 65 Years and over	6,146	3.4

**2: EDUCATION**

<b>2.1: Non School Attendance of</b>	<b>Number</b>	<b>Percent</b>
Persons aged 6-15 not attending school	4,114	7.3
Males aged 6-15 not attending school	2,231	7.8
Females aged 6-15 not attending school	1,883	6.7
<b>2.2: Persons Attending Primary school</b>	<b>Number</b>	<b>Percent</b>
Persons aged 6-12 attending primary school	36,630	87.3
Males aged 6-12 attending primary school	18,362	86.4
Females aged 6-12 attending primary school	18,268	88.3
<b>2.3: Persons attending Secondary school</b>	<b>Number</b>	<b>Percent</b>
Persons aged 13-18 attending secondary school	7,950	29.9
Males aged 13-18 attending secondary school	4,229	31.9
Females aged 13-18 attending secondary school	3,721	27.9
<b>2.4: Persons Not in School and Highest Level Completed is below S.4</b>	<b>Number</b>	<b>Percent</b>
Persons aged 15and above whose highest level of education completed is below S.4	55,366	89.2
Males aged 15and above whose highest level of education completed is below S.4	24,515	85.5
Females aged 15and above whose highest level of education completed is below S.4	30,851	92.3
<b>2.5: Persons Not in School and Highest Level Completed is "O" Level</b>	<b>Number</b>	<b>Percent</b>
Persons aged 18and above whose highest level of education completed is "O" level (S.4)	3,648	4.9
Males aged 18and above whose highest level of education completed is "O" level (S.4)	2,042	5.9
Females aged 18and above whose highest level of education completed is "O" level (S.4)	1,606	4.1
<b>2.6: Persons Not in School and Highest Level Completed is "A" Level</b>	<b>Number</b>	<b>Percent</b>
Persons aged 20and above whose highest level of education completed is "A" level (S.6)	581	0.9
Males aged 20and above whose highest level of education completed is "A" level (S.6)	450	1.4
Females aged 20and above whose highest level of education completed is "A" level (S.6)	131	0.4



**3: ILLITERACY STATUS**

<b>3.1: Persons aged 18 years and above</b>	<b>Number</b>	<b>Percent</b>
Persons aged 18 years and above who are illiterate	24,662	33.4
Males aged 18 years and above who are illiterate	9,141	26.5
Females aged 18 years and above who are illiterate	15,521	39.4
<b>3.2: Other age groups</b>	<b>Number</b>	<b>Percent</b>
Persons aged 10-17 years who are illiterate	10,270	26.3
Persons aged 18-30 years who are illiterate	6,967	21.6
Persons aged 60 years and above who are illiterate	5,510	61.6

**4: OWNERSHIP OF A BIRTH CERTIFICATE**

<b>4.1: Children with Birth Certificates</b>	<b>Number</b>	<b>Percent</b>
Children less than 1 year who have a Birth Certificate	767	11.7
Children less than 5 years who have a Birth Certificate	4,901	14.6
Children 0-8 years who have a Birth Certificate	9,085	15.2
Children 0-17 years who have a Birth Certificate	16,074	16

**5: PARENTAL SURVIVAL AND ORPHANHOOD**

<b>5.1: Children 0-8 years</b>	<b>Number</b>	<b>Percent</b>
Children 0-8 years who have lost one parent	1,529	2.6
Children 0-8 years who have lost both parents	94	0.2
Children 0-8 years who have lost at least a parent (total number of orphans)	1,623	2.7
Children 0-8 years who have both parents	58,051	97.3
<b>5.2: All children (0-17 years)</b>	<b>Number</b>	<b>Percent</b>
Children 0-17 years who have lost one parent	5,026	4.8
Children 0-17 years who have lost both parents	426	0.4
Children 0-17 years who have lost at least a parent (total number of orphans)	5,452	5.2
Children 0-17 years who have both parents	98,941	94.8

**6: DISABILITY**

<b>6.1: Disability</b>	<b>Number</b>	<b>Percent</b>
Persons aged 2 years and above with a disability	38,525	23.3
Persons 2 years and above with a seeing disability	14,493	8.8
Persons 2 years and above with a hearing disability	8,639	5.2
Persons 2 years and above with a walking disability	11,897	7.2
Persons 2 years and above with a remembering disability	23,960	14.5
Persons 2 years and above with multiple disabilities	11,363	30.8
Children 2-17 years with a disability	14,132	15.4
Youth 18-30 years with a disability	6,458	20.0
Older persons 60 years and above with a disability	6,311	70.6

**7: MARRIAGE AND CHILDBEARING**

<b>7.1: Marital status of the population</b>	<b>Number</b>	<b>Percent</b>
Persons aged 10 and above who are married	30,331	51.5
Persons aged 18 and above who are married	29,100	73.9
Females aged 50 and above who are widowed	2,943	33.5
Females aged 10-17 who have ever been married	1,336	6.8
Females aged 10-19 who have ever been married	3,247	14.0

<b>7.2: Females who have had a birth</b>	<b>Number</b>	<b>Percent</b>
Females aged 12-17 who have given birth	842	6.0
Females aged 12-19 who have given birth	2,383	13.4

**8: WORKING STATUS**

<b>8.1: Working persons</b>	<b>Number</b>	<b>Percent</b>
Persons aged 10-15 who were working	13,130	42.5
Persons aged 10-17 who were working	17,421	44.7
Persons aged 18-30 who were working	26,596	82.4
Persons aged 16-64 who were working	64,805	85.5
Persons aged 18 years and above who were working	65,020	88.0
Persons aged 60 years and above who were working	7,110	79.5

<b>8.2: Not working and not in school</b>		
Youths (Persons aged 18-30) who were not working and not in school	1,561	4.8

**9: USE OF ICT**

<b>9.1: Mobile phone ownership (10 and above years)</b>	<b>Number</b>	<b>Percent</b>
Persons aged 10 years and above that own at least one mobile phone	31,501	27.9
Males aged 10 years and above that own at least one mobile phone	18,744	34.7
Females aged 10 years and above that own at least one mobile phone	12,757	21.7
<b>9.2: Mobile phone ownership (18-30 years)</b>	<b>Number</b>	<b>Percent</b>
Persons aged 18-30 years and above that own at least one mobile phone	12,403	38.4
Males aged 18-30 years and above that own at least one mobile phone	7,218	48.3
Females aged 18-30 years and above that own at least one mobile phone	5,185	29.9
<b>9.3: Internet Usage (10 and above years)</b>	<b>Number</b>	<b>Percent</b>
Persons aged 10 years and above that use internet	5,416	4.8
Males aged 10 years and above that use internet	3,547	6.6
Females aged 10 years and above that use internet	1,869	3.2
<b>9.4: Internet Usage (18-30 years)</b>	<b>Number</b>	<b>Percent</b>
Persons aged 18-30 years and above that use internet	2,850	8.8
Males aged 18-30 years and above that use internet	1,802	12.1
Females aged 18-30 years and above that use internet	1,048	6.0

**10: HOUSING CHARACTERISTICS**

<b>10.1: Construction Materials</b>	<b>Number</b>	<b>Percent</b>
Households living in dwelling units constructed using permanent roof materials	32,094	88.0
Households living in dwelling units constructed using permanent wall materials	7,073	19.4
Households living in dwelling units constructed using permanent floor materials	4,595	12.6
<b>10.2: Status of Dwelling Units</b>	<b>Number</b>	<b>Percent</b>
Households living in semi-permanent dwelling units	29,120	79.8
Households living in temporary dwelling units	4,017	11.0

**11: ACCESS TO COMMUNITY SERVICES**

<b>11.1: Primary school</b>	<b>Number</b>	<b>Percent</b>
Households that are 5 km or more to the nearest primary school, <u>whether public or private</u>	2,684	7.4
Households that are 5 km or more to the nearest <u>public</u> primary school	3,924	10.8
<b>11.2: Secondary school</b>	<b>Number</b>	<b>Percent</b>
Households that are 5 km or more to the nearest secondary school, <u>whether public or private</u>	9,037	24.8
Households that are 5 km or more to the nearest <u>public</u> secondary school	12,089	33.1
<b>11.3: Health Facility</b>	<b>Number</b>	<b>Percent</b>
Households that are 5 km or more to the nearest health facility, <u>whether public or private</u>	5,719	15.7
Households that are 5 km or more to the nearest <u>public</u> health facility	10,000	27.4
<b>11.4: Police post</b>	<b>Number</b>	<b>Percent</b>
Households that are 5 km or more to the nearest Police Post/Police Station	11,257	30.9

**12: HOUSEHOLD HEALTH AND HYGIENE**

<b>12.1: Mosquito nets</b>	<b>Number</b>	<b>Percent</b>
Households that own at least a mosquito net	35,543	97.5
Households that own at least a mosquito net that was received free (Government /NGO)	35,223	99.1
<b>12.2: Water source</b>	<b>Number</b>	<b>Percent</b>
Households that have access to piped water	3,945	10.8
Households that use a bore hole	2,461	6.7
<b>12.3: Toilet facility</b>	<b>Number</b>	<b>Percent</b>
Households without any toilet facility	2,696	7.4
<b>12.4: Other environmental conditions</b>	<b>Number</b>	<b>Percent</b>
Households that properly dispose off solid waste	7,060	19.4
Households which are not living in decent dwellings	36,319	99.6

**13: HOUSEHOLD ASSETS**

<b>13.1: Owner occupied dwellings</b>	<b>Number</b>	<b>Percent</b>
Households that are owner occupied	33,118	90.8
Male headed households that are owner occupied	27,814	91.5
Female headed households that are owner occupied	5,304	87.2
<b>13.2: Movable Assets</b>	<b>Number</b>	<b>Percent</b>
Households that own a television	1,786	4.9
Households that own a computer	307	0.8
Households that own a bicycle	6,944	19.0
Households that own a radio	21,389	58.6

**14: OTHER HOUSEHOLD CHARACTERISTICS**

<b>14.1: Main source of information</b>	<b>Number</b>	<b>Percent</b>
Households whose main source of information is a radio	22,041	60.4
Households whose main source of information is a community announcer	1,149	3.2
Households whose main source of information is a telephone	1,154	3.2
<b>14.2: Economy and Welfare</b>	<b>Number</b>	<b>Percent</b>
Households that received remittances from abroad in the last 12 months	10,798	29.6
Households where any member possesses a bank account	4,144	11.4
Households that depend on subsistence farming as a main source of livelihood	31,061	85.2
Households with at least one member engaged in a non-agricultural household based enterprise	23,042	90.2
Households where (all members aged 5 years and above) consume less than two meals in a day	2,568	7.0
<b>14.3: Energy for lighting</b>	<b>Number</b>	<b>Percent</b>
Households that have access to electricity	1,452	4.0
Households that use Tadooba for lighting	27,465	75.3

**15: HOUSEHOLD BASED AGRICULTURAL ACTIVITIES**

<b>15.1: Household based Agricultural Activities</b>	<b>Number</b>	<b>Percent</b>
Households engaged in crop growing	34,242	93.9
Households engaged in maize growing	30,701	84.2
Households engaged in coffee growing	10,297	28.2
Households engaged in growing of beans	31,201	85.5
Households engaged in growing of millet	2,404	6.6
Households engaged in growing of sweet potatoes	11,958	32.8
Households engaged in growing of matooke	17,721	48.6
Households engaged livestock farming	28,839	79.1
Households engaged in either crop growing or livestock farming	34,895	95.7

## **APPENDICES**



**Appendix 1: Population by Sex and Type of Residence by District, Uganda 2014**

<b>Central</b>	<b>Male</b>	<b>Female</b>	<b>Urban</b>	<b>Rural</b>	<b>Total</b>
Buikwe	207,324	215,447	299,628	123,143	422,771
Bukomansimbi	75,109	76,304	12,797	138,616	151,413
Butambala	50,082	50,758	15,553	85,287	100,840
Buvuma	48,414	41,476	9,935	79,955	89,890
Gomba	82,167	77,755	12,439	147,483	159,922
Kalangala	31,349	22,944	4,980	49,313	54,293
Kalungu	89,679	93,553	37,094	146,138	183,232
Kampala	712,762	794,318	1,507,080	0	1,507,080
Kayunga	180,706	187,356	27,061	341,001	368,062
Kiboga	75,847	72,371	33,520	114,698	148,218
Kyankwanzi	111,539	103,154	30,621	184,072	214,693
Luwero	226,805	230,153	95,749	361,209	456,958
Lwengo	133,474	141,479	42,919	232,034	274,953
Lyantonde	46,714	47,039	13,823	79,930	93,753
Masaka	145,552	151,452	103,227	193,777	297,004
Mityana	165,717	163,247	107,645	221,319	328,964
Mpigi	125,404	125,144	43,360	207,188	250,548
Mubende	346,654	337,694	113,803	570,545	684,348
Mukono	289,757	307,047	162,710	434,094	596,804
Nakaseke	104,795	92,578	39,397	157,976	197,373
Nakasongola	93,323	88,472	24,667	157,128	181,795
Rakai	254,366	261,943	34,041	482,268	516,309
Ssembabule	126,084	126,513	16,949	235,648	252,597
Wakiso	949,035	1,048,383	1,681,449	315,969	1,997,418
<b>Eastern</b>	<b>Male</b>	<b>Female</b>	<b>Urban</b>	<b>Rural</b>	<b>Total</b>
Amuria	132,521	138,407	17,385	253,543	270,928
Budaka	100,620	106,977	23,809	183,788	207,597
Bududa	105,820	104,353	13,753	196,420	210,173
Bugiri	185,925	196,988	64,223	318,690	382,913
Bukedea	98,684	104,916	10,927	192,673	203,600
Bukwo	45,058	44,298	12,094	77,262	89,356
Bulambuli	86,108	88,405	16,867	157,646	174,513
Busia	156,447	167,215	54,798	268,864	323,662
Butaleja	119,466	124,687	33,201	210,952	244,153
Buyende	158,615	164,452	23,201	299,866	323,067
Iganga	241,182	263,015	92,792	411,405	504,197
Jinja	230,189	241,053	172,714	298,528	471,242
Kaberaido	106,042	108,984	4,032	210,994	215,026
Kaliro	115,969	120,230	16,753	219,446	236,199
Kamuli	236,389	249,930	58,984	427,335	486,319
Kapchorwa	51,658	53,528	44,211	60,975	105,186
Katakwi	81,673	84,558	9,280	156,951	166,231
Kibuku	97,476	104,557	17,436	184,597	202,033

Kumi	116,457	122,811	36,493	202,775	239,268
Kween	47,404	46,263	6,462	87,205	93,667
Luuka	113,566	124,454	10,264	227,756	238,020
Manafwa	173,580	180,245	53,837	299,988	353,825
Mayuge	229,252	243,987	33,756	439,483	473,239
Mbale	233,339	255,621	126,544	362,416	488,960
Namayingo	106,303	109,140	15,740	199,703	215,443
Namutumba	123,911	128,646	18,679	233,878	252,557
Ngora	68,414	73,505	15,148	126,771	141,919
Pallisa	188,125	198,765	37,937	348,953	386,890
Serere	139,493	146,410	12,158	273,745	285,903
Sironko	120,862	121,559	34,104	208,317	242,421
Soroti	144,976	151,857	49,685	247,148	296,833
Tororo	250,830	266,250	72,325	444,755	517,080

<b>Northern</b>	<b>Male</b>	<b>Female</b>	<b>Urban</b>	<b>Rural</b>	<b>Total</b>
Abim	52,456	55,510	17,168	90,798	107,966
Adjumani	108,298	116,953	41,064	184,187	225,251
Agago	110,495	117,297	29,153	198,639	227,792
Alebtong	110,989	116,552	6,702	220,839	227,541
Amolatar	73,014	74,152	21,479	125,687	147,166
Amudat	54,246	51,523	11,786	93,983	105,769
Amuru	91,284	95,412	9,302	177,394	186,696
Apac	180,995	187,631	75,300	293,326	368,626
Arua	374,755	407,322	61,962	720,115	782,077
Dokolo	89,476	93,617	20,135	162,958	183,093
Gulu	134,571	141,042	150,306	125,307	275,613
Kaabong	79,207	88,672	11,559	156,320	167,879
Kitgum	99,258	104,790	75,581	128,467	204,048
Koboko	102,250	104,245	57,902	148,593	206,495
Kole	117,164	122,163	8,860	230,467	239,327
Kotido	86,169	94,881	66,454	114,596	181,050
Lamwo	65,106	69,265	21,700	112,671	134,371
Lira	196,663	211,380	101,155	306,888	408,043
Maracha	87,900	98,234	9,291	176,843	186,134
Moroto	49,746	53,686	14,196	89,236	103,432
Moyo	68,940	70,072	10,579	128,433	139,012
Nakapiripirit	74,578	82,112	3,727	152,963	156,690
Napak	65,518	76,706	4,733	137,491	142,224
Nebbi	191,104	205,690	58,069	338,725	396,794
Nwoya	65,969	67,537	13,592	119,914	133,506
Omoro	78,837	81,895	18,952	141,780	160,732
Otuke	51,187	53,067	6,213	98,041	104,254
Oyam	187,121	196,523	18,399	365,245	383,644
Pader	86,635	91,369	13,382	164,622	178,004
Yumbe	230,626	254,196	34,806	450,016	484,822

Zombo	115,824	124,257	43,723	196,358	240,081
<b>Western</b>	<b>Male</b>	<b>Female</b>	<b>Urban</b>	<b>Rural</b>	<b>Total</b>
Buhweju	59,059	61,661	2,956	117,764	120,720
Buliisa	57,801	55,360	7,238	105,923	113,161
Bundibugyo	108,435	115,952	40,219	184,168	224,387
Bushenyi	114,207	120,236	56,070	178,373	234,443
Hoima	287,906	285,080	105,944	467,042	572,986
Ibanda	121,440	128,185	136,860	112,765	249,625
Isingiro	235,621	250,739	58,408	427,952	486,360
Kabale	158,238	173,097	78,585	252,750	331,335
Kabarole	233,648	235,588	158,231	311,005	469,236
Kagadi	171,812	179,221	45,286	305,747	351,033
Kakumiro	147,157	145,951	9,834	283,274	293,108
Kamwenge	202,503	211,951	22,840	391,614	414,454
Kanungu	121,081	131,063	51,008	201,136	252,144
Kasese	338,215	356,772	140,050	554,937	694,987
Kibaale	70,815	70,132	6,650	134,297	140,947
Kiruhura	166,214	161,863	31,874	296,203	328,077
Kiryandongo	132,822	133,375	55,770	210,427	266,197
Kisoro	126,055	155,650	27,611	254,094	281,705
Kyegegwa	140,617	141,020	26,294	255,343	281,637
Kyenjojo	210,599	211,605	64,812	357,392	422,204
Masindi	148,121	142,992	94,438	196,675	291,113
Mbarara	230,082	242,547	195,318	277,311	472,629
Mitooma	86,484	96,960	11,396	172,048	183,444
Ntoroko	34,038	32,967	23,789	43,216	67,005
Ntungamo	232,469	251,372	71,485	412,356	483,841
Rubanda	92,011	104,885	26,669	170,227	196,896
Rubirizi	61,765	67,384	17,274	111,875	129,149
Rukungiri	150,016	164,678	43,576	271,118	314,694
Sheema	99,225	108,118	110,256	97,087	207,343

## Appendix 2: The Household Questionnaire for the National Population and Housing Census 2014



# Republic of Uganda

## National Population and Housing Census 2014

### HOUSEHOLD QUESTIONNAIRE



## BOOK NUMBER

## IDENTIFICATION PARTICULARS

WRITE NAME IN CAPITAL LETTERS		CODE
DISTRICT:		
COUNTY/MUNICIPALITY:		
SUB COUNTY/DIVISION/TOWN COUNCIL:		
PARISH/WARD:		
LC1:		
EA:		

		Code
ENUMERATOR'S NAME AND CODE:		
ENUMERATOR'S SIGNATURE:		
DATE: (dd/mm/yyyy):		
PARISH SUPERVISOR'S NAME AND CODE:		
PARISH SUPERVISOR'S SIGNATURE:		
DATE: (dd/mm/yyyy):		

A

<b>Hello, my name is</b> ..... <b>and I work with Uganda Bureau of Statistics (UBOS). We are conducting the National Population and Housing Census 2014. We are visiting each and every household in the country collecting information about individuals and the homesteads they live in. It takes about 40 minutes to complete the interview. Whatever information you provide will be kept strictly confidential. We would very much appreciate your participation and co-operation in this Census.</b>	<b>Result Code (R1)</b> 1 Completed 2 Partially Completed 3 Not Interviewed	<b>Ethnicity (P8)</b> 511 Acholi    533 Banyaruguru    555 Kakwa 512 Aliba    534 Banyarwanda    556 Karimojong 513 Alur    535 Banyole    557 Kebu (Okebu) 514 Aringa    536 Banyoro    558 Kuku 515 Baamba    537 Baruli    559 Kumam 516 Babukusu    538 Barundi    560 Lango 517 Babwisi    539 Basamia    561 Lendu 518 Bafumbira    540 Basoga    562 Lugbara 519 Baganda    541 Basongora    563 Madi 520 Bagisu    542 Batagwenda    564 Mening 521 Bagungu    543 Batoro    565 Mvuba 522 Bagwe    544 Batuku    566 Napore 523 Bagwere    545 Batwa    567 Ngikutio 524 Bahehe    546 Chope    568 Nubi 525 Bahororo    547 Dodoth    569 Nyangia 526 Bakenyi    548 Ethur    570 Pokot 527 Bakiga    549 Gimara    571 Reli 528 Bakonzo    550 Ik (Teuso)    572 Sabiny 529 Banyabindi    551 Iteso    573 Shana 530 Banyabutumbi    552 Jie    574 So (Tepeth) 531 Banyankore    553 Jonam    575 Vonoma 532 Banyara    554 Jopadhola    576 Other Ugandan				<b>Country Of Citizenship For Non-Ugandans</b> 671 Kenya 672 Tanzania 673 Rwanda 674 Burundi 675 South Sudan 676 Dem. Rep. Of Congo 677 Somalia 678 Other Africa 681 United Kingdom 682 Other Europe 683 Asia 684 USA 685 Canada 686 Central & Latin America 687 Australia 688 Oceania 689 Non-Ugandan-Not Stated		<b>Religion (P9)</b> 10 No Religion 11 Anglican 12 Catholic 13 Muslim 14 Seventh-Day Adventist 15 Orthodox 16 Pentecostal/ Born Again/ Evangelical 17 Baha'i 18 Baptist 19 Jews 20 Presbyterian 21 Mammon 22 Hindus 23 Buddhist 24 Jehovah's Witness 25 Salvation Army 26 Traditional 27 Others	<b>Section 5: Crop Codes</b> 10 Maize    39 Cocoa 11 Beans    40 Paw Paw 12 Banana (Food)    41 Eggplants 13 Cassava    42 Onions 14 Sweet Potatoes    43 Passion fruit 15 G/nuts    44 Greens (Doodo/ Nakati/ Bbugga/ Malakwang, etc) 16 Sorghum 17 Millets 18 Sim Sim    45 Vanilla 19 Banana (Beer)    46 Tea 20 Irish Potatoes    47 Wheat 21 Soya Beans    48 Barley 22 Rice    49 Spinach 23 Banana (sweet)    50 Cucumber 24 Field Peas    51 Water melons (Kawo)    52 Carrots 25 Cow Peas    53 Garlic 26 Pigeon Peas    54 Mushrooms 27 Sugar cane    55 Tobacco 28 Yam    56 Grapes 29 Avocado    57 Lemons & Limes 30 Tomatoes    58 Tangerines & Mandarin 31 Sunflower 32 Cotton    59 Straw berries 33 Jackfruit    60 Apples & Apricots 34 Pineapples    61 Pears 35 Pumpkins    62 Coffee Arabica 36 Mango    63 Coffee Robusta 37 Oranges    96 Other crops 38 Cabbage    97 N/A	
	<b>Relationship (P2)</b> 10 Usual head of hh - Absent 11 Usual head of hh - Present 12 Spouse 13 Biological Son 14 Biological Daughter 15 Step son 16 Step daughter 17 Grandson 18 Grand daughter 19 Parent to head or spouse 20 Brother or Sister to head or spouse 21 Other relative 22 Non relative	<b>Major Field of Specialization (P20)</b> 10 Health Sciences 11 Life & Biological Sciences 12 Animal Sciences 13 Physical/Natural Sciences 14 Sport Sciences 15 Engineering 16 Social Sciences & History 17 Agriculture 18 Computer & Information Sciences 19 Arts 20 Food science 21 Business Studies 22 Mathematics 23 Economics 24 Demography and Population 25 Community and Development Studies 26 Languages & Literature 27 Education 28 Gender Studies 29 Psychology 30 Sociology 31 Special Needs Education 32 Peace and conflict studies 33 Law & Legal Studies 34 Visual & Performing Arts 35 Commerce 36 Procurement and Supply Mgt 37 Administration and Human Resource 38 Communication and Journalism 39 Philosophy & Religion 40 Architecture & Physical Planning 41 Home Economics 42 Library and Archives Sciences 43 Tourism and hospitality 44 Statistics 45 Ethic Studies 96 Other specify 97 NA		<b>Type of Disability (P14-P17)</b> 1 No - no difficulty 2 Yes – some difficulty 3 Yes – a lot of difficulty 4 Cannot do at all 7 Not Applicable 8 Don't know		<b>Occupation (P23)</b> 10 Subsistence Agricultural Workers 11 Agricultural, fishery and related labourers 12 Subsistence animal rearing 13 Retailers of food and beverages 14 Retailers of general merchandise and domestic wares 15 Market oriented gardeners and crop growers 16 Primary education teaching associate professionals 17 Restaurant services workers and cooks 18 General laborers 19 Stall and market salespersons 20 Domestic helpers e.g. house girls 21 Motor Vehicle Drivers 22 Boda boda riders (motor cycle) 23 Boda boda riders (bicycle) 24 Foods and related products processing trades workers 25 Street vendors and related workers e.g. food, hawkers, tel. sales 26 Other personal services workers e.g. hair dressers, barbers 27 Construction laborers 28 Textiles, footwear and other personal effects goods 29 Builders, brick layers, masons and other related workers 30 Building finishers and related trades workers 31 Subsistence fishery and related workers 32 Carpenters, cabinet makers, joiners, brush makers etc. 33 Forestry and related workers 34 Fashion and Other models sales persons and demonstrators 35 Textiles and garment trades workers (including tailors) 36 Machinery mechanics and fitters 37 Manufacturing laborers 38 Nurses and Midwives 39 Produce buyers 40 Secondary education teaching professionals 41 Protective service workers, policemen, police wardens 42 Dealers in agricultural and farm Products 43 Messengers, watchers and security workers				
	<b>Residential Status (P4)</b> 1 Usual household member 2 Regular household member 3 Visitor/Guest	<b>School Attendance P18 )</b> 1 Attending school in 2014 2 Left school in 2014 3 Left school before 2014 4 Never been to school 7 NA		<b>Activity Status (P22)</b> 10 Working for pay 11 Employer 12 Own account worker 13 Helping without pay in hh business 14 Volunteer 15 An apprentice (not paid) 16 Looking for work 17 Not working and not looking for work 18 Household chores 19 Full time student 20 Retired/pensioner 21 Too old to work 22 To young to work 96 Other 97 NA		44 Market-oriented crop and animal producers 45 Experienced non-professionals in teaching 46 Market oriented fishery workers, hunters, and trappers 47 Transport laborers 48 Foremen, supervisors in elementary occupation services 49 Travel attendants, guides, conductors, 50 Market-oriented animal producers 51 Cashier, teller, and related clerks, money lender, debt collectors 52 Metal molders, welders, sheet metal workers, structural and metal prepares 53 Numerical clerks (Statistical, finance, book keeping and accounting) 54 Handicraft workers in wood, textiles, and related materials 55 Secretaries and Keyboard operating clerks 56 Post-primary education teaching associate professionals 57 retailers of human drugs 58 Traditional medicine practitioners and faith healers 59 Medical assistants 60 Laborers in mining 61 Pre-primary Education Teaching associate professionals 62 Physical science and engineering technicians 63 Electrical and electronic Instrument mechanics and fitters 64 Other street elementary occupation services e.g. shoe polisher, car washers 65 Religion professionals (ordained catechist) 66 Computer assistants and computer equipment operators 67 Finance and sales associate professionals 68 Accountants, business administrators, and business professionals 69 Public and private administrative associate professionals 70 Client Information Clerks 96 Others 97 N/A				
	<b>Grade Completed (P19)</b> 01 Never been to school 02 Did not complete Pre-Primary 03 Completed Pre-Primary 04 In P1 but did not complete / attend Pre-Primary 10 Did not complete P1 11 P1 12 P2 13 P3 14 P4 15 P5 16 P6 17 P7 21 J1-J3 31 S1 32 S2 33 S3 34 S4 35 S5 36 S6 41 Professional Certificate 42 Diploma 43 First Degree 44 Post Graduate Certificate 45 Post Graduate Diploma 46 Masters Degree 47 PhD 96 Other 97 NA	<b>Marital Status (P26)</b> 1 Never married 2 Currently married/Cohabiting (Monogamous) 3 Currently married/Cohabiting (Polygamous) 4 Widowed 5 Separated 6 Divorced 7 NA 8 Don't Know								





**Republic of Uganda**  
**National Population and Housing Census 2014**



## HOUSEHOLD QUESTIONNAIRE



## SUMMARY INFORMATION

WRITE NAME IN CAPITAL LETTERS

CODE

DISTRICT

COUNTY /  
MUNICIPALITYSUB-COUNTY/  
DIVISION / T.C.PARISH /  
WARD

LC1

EA

ENUMERATOR'S NAME AND CODE:

ENUMERATOR'S SIGNATURE: \_\_\_\_\_

DATE: (dd/mm/yyyy):

PARISH SUPERVISOR'S NAME  
AND CODE:

PARISH SUPERVISOR'S SIGNATURE:

DATE: (dd/mm/yyyy):

NUMBER OF BOOKS USED

BOOK

OF

(EXCLUDE SPOILT AND  
UNUSED BOOKS)

[illegible]


	Household Number	Population		
		Male	Female	Total
	(1)	(2)	(3)	(4)
	<input type="text"/>	<input type="text"/>	<input type="text"/>	<input type="text"/>
	<input type="text"/>	<input type="text"/>	<input type="text"/>	<input type="text"/>
	<input type="text"/>	<input type="text"/>	<input type="text"/>	<input type="text"/>
	<input type="text"/>	<input type="text"/>	<input type="text"/>	<input type="text"/>
	<input type="text"/>	<input type="text"/>	<input type="text"/>	<input type="text"/>
	<input type="text"/>	<input type="text"/>	<input type="text"/>	<input type="text"/>
	<input type="text"/>	<input type="text"/>	<input type="text"/>	<input type="text"/>
	<input type="text"/>	<input type="text"/>	<input type="text"/>	<input type="text"/>
	<input type="text"/>	<input type="text"/>	<input type="text"/>	<input type="text"/>
	<input type="text"/>	<input type="text"/>	<input type="text"/>	<input type="text"/>
	Household Population. Row (A)			
A)	<input type="text"/>	<input type="text"/>	<input type="text"/>	<input type="text"/>
	Absent Household Heads. Row (B)			
B)	<input type="text"/>	<input type="text"/>	<input type="text"/>	<input type="text"/>
	Total Number of Households	De facto Total Household Population. Row (A) - Row (B)		
		Male	Female	Total
A)	<input type="text"/>	<input type="text"/>	<input type="text"/>	<input type="text"/>
B)	<input type="text"/>	<input type="text"/>	<input type="text"/>	<input type="text"/>

**01A**

[illegible]

[illegible]



DD4										HOUSEHOLD NUMBER																																							
SECTION 2: HOUSING CONDITIONS										SECTION 3: COMMUNITY SERVICES										SECTION 4: HOUSEHOLD CHARACTERISTICS																													
What is the occupancy <b>tenure</b> of the <b>dwelling</b> unit?		What type of <b>dwelling</b> unit does this household occupy?		How many <b>rooms</b> were used on the Census Night for sleeping?		Types of materials <b>mainly</b> used for construction of the <b>roof</b>		Types of materials <b>mainly</b> used for construction of the <b>wall</b>		Types of materials <b>mainly</b> used for the <b>floor</b>		What is the distance from home to the nearest ..... on foot, irrespective of whether you use the service or not  <i>(Record distance in kms, if distance is given in miles, refer to code list H7-H13)</i>										What source of <b>energy</b> does this household <b>mainly</b> use for <b>lighting</b> ?																											
H1		H2		H3		H4		H5		H6		H7		H8		H9		H10		H11		H12		H13		H14																							
10 = Owner occupied 11 = Free Public 12 = Free Private 13 = Subsidized public 14 = Subsidized private 15 = Rented public 16 = Rented private 96 = Other		10 = Detached house (single or multi-storey) 11 = Semi-Detached house 12 = Flat in a Block of Flats 13 = Room or rooms of a Main House 14 = Servants Quarters 15 = Tenement (Muzigo) 16 = Garage 17 = Go down/Basement 18 = Store 96 = Other		If 9 or more were used, record 9		10 = Iron sheets 11 = Tiles 12 = Asbestos 13 = Concrete 14 = Tins 15 = Thatch 96 = Other		10 = Concrete/Stones 11 = Cement Blocks 12 = Burnt/Stabilised bricks 13 = Unburnt bricks with Cement 14 = Unburnt bricks with mud 15 = Wood 16 = Mud and Pole 17 = Tin/Iron sheets 96 = Other		10 = Earth 11 = Rammed earth 12 = Cement screed 13 = Concrete 14 = Tiles 15 = Brick 16 = Stone 17 = Wood 96 = Other		Public Health Facility				Private Health Facility				Public Primary School				Private Primary School				Public Secondary School				Private Secondary School				Police Station / Police Post				10 = Electricity- National grid (Umeme) 11 = Electricity- Solar 12 = Electricity- Personal Generator 13 = Electricity- Community/thermal plant 14 = Gas 15 = Liquefied Petroleum Gas (LPG) 16 = Biogas 17 = Paraffin-Lantern 18 = Paraffin-Tadooba 19 = Candles 20 = Firewood 21 = Cow Dung 22 = Grass (reeds) 96 = Other									
SECTION 4: HOUSEHOLD CHARACTERISTICS (CONTINUED)																																																	
What source of <b>energy</b> does this household <b>mainly</b> use for <b>cooking</b> ?					What is the household's <b>main</b> source of <b>water</b> for <b>drinking</b> ?					What is the <b>distance</b> to this source of <b>water</b> ?					What type of <b>toilet</b> facility does this household <b>mainly</b> use?					Does the Household <b>share</b> this toilet facility with other households?					What is the <b>most</b> commonly used <b>method</b> of solid waste disposal from the household?					What type of <b>bathroom</b> does this household <b>mainly</b> use?					What type of <b>kitchen</b> does this household <b>mainly</b> use?														
H15					H16					H17					H18					H19					H20					H21					H22														
10 = Electricity- National grid (Umeme) 11 = Electricity- Solar 12 = Electricity- Personal Generator 13 = Electricity- Community/thermal plant 14 = Gas 15 = Liquefied Petroleum Gas (LPG) 16 = Biogas 17 = Paraffin-Stove 18 = Charcoal 19 = Firewood 20 = Cow Dung 21 = Grass (reeds) 96 = Other					10 = Piped water into dwelling 11 = Piped water to the yard 12 = Public Taps 13 = Borehole in yard/plot 14 = Public borehole 15 = Protected well/spring 16 = Unprotected well/spring 17 = River/Stream/Lake 18 = Vendor 19 = Tanker Truck 20 = Gravity Flow Scheme 21 = Rain Water 22 = Bottled Water 96 = Other					<i>(Record distance in kms, if distance is given in miles, see distance conversion list)</i>  <i>If the water source is on premises, record 0.0</i>					10 = Flush Toilet 11 = VIP Latrine 12 =Covered Pit Latrine <u>with a slab</u> 13 =Covered Pit Latrine <u>without a slab</u> 14 =Uncovered Pit Latrine <u>with a slab</u> 15 =Uncovered Pit Latrine <u>without a slab</u> 16 = Ecosan (compost toilet) 17 = No facility, bush, polythene bags, bucket, etc 96 = Other					1 = Yes 2 = No 7 = N/A (For "No Facility, Bush, Polythene bags, bucket etc)					10 = Occupants dispose solid waste in the garden, and DO NOT burn or bury it. 11 = Occupants burn solid waste 12 = Occupants bury solid waste 13 = Occupants dispose solid waste in a local dump supervised by urban authorities 14 = Occupants dispose solid waste in a local dump NOT supervised by urban authorities 15 = Solid waste collected by waste vendor 16 = Occupants dispose solid waste into river/sea/stream/pond 96 = Other arrangements					10 = Inside, drainage provided 11 = Inside, no drainage provided 12 = Outside built, drainage provided 13 = Outside built, no drainage provided 14 = Make shift 15 = None 96 = Other					10 = Inside, specific room 11 = Inside, no specific room 12 = Outside, built 13 = Make shift 14 = Open space														
HOUSEHOLD ASSETS										INFORMATION					POSTAL SERVICES					MOSQUITO NETS					SOURCE OF LIVELIHOOD					REMITTANCES																			
Does any member of this household own..... (ASSETS)? <i>If Yes, record the number, if 9 or more, write 9</i> <i>If none, record 0</i>										What is the household's <b>main</b> source of information?					Did any member of this household <b>send/receive</b> a letter/parcel by postal services during the <b>last 12 months</b> ?					Does this household have any <b>mosquito nets</b> ?					If YES IN H26, were the mosquito nets given <b>free</b> or were they <b>bought</b> ? Record the appropriate code in the boxes below 1 = Yes; 2 = No; 7 = NA; 8 = DK					What was the <b>main</b> source of the household's <b>livelihood</b> in the <b>last 12 months</b> ?					Did the household receive any <b>money</b> or <b>physical items</b> from any relative / family member / friend abroad during the <b>last 12 months</b> ?					If YES IN H29, in which countries do the relatives / family members / friends <b>reside</b> ? 1 = Yes; 2 = No; 7=N/A									
H23										H24					H25					H26					H27					H28					H29					H30									
A: Motor vehicle				G: Television				10 = Radio 11 = Word of Mouth 12 = Telephone 13 = Print Media 14 = Post Mail 15 = Hand Mail 16 = Television 17 = Community Meetings		1 = Yes, Once 2 = Yes, Twice 3 = Yes, Thrice 4 = Yes, 4 times and above 5 = No 8 = Don't Know		1 = Yes 2 = No		A=Given free by Gov't				10 = Subsistence farming 11 = Commercial farming 12 = Employment income 13 = Business Enterprise 14 = Cottage Industry 15 = Property Income		16 = Family / Friends / Relatives		17 = Institutional or Program support (e.g Red Cross, WFP, e.t.c)		18 = Sale of assets 96 = Other		1 = Yes, both goods and money 2= Yes, Money only 3 = Yes, Goods only 4 = No 8 = DK		A. Australia				J. South Africa																	
B: Motor cycle				H: Radio				18 = Internet						B= Given free by NGO				16 = Family / Friends / Relatives								2= Yes, Money only 3 = Yes, Goods only 4 = No 8 = DK		B. Canada				K. U.K																	
C: Bicycle				I: Fixed Phone				19 = Community Announcer						C= Given free by friend/relative				17 = Institutional or Program support (e.g Red Cross, WFP, e.t.c)								4 = No 8 = DK		C. France				L. U.S.A																	
D: Wheel Chair				J: Computer / Laptop				96 = Other						D= Bought				18 = Sale of assets 96 = Other								5 = None 96 = Other		D. Germany				M. Sweden																	
E: Canoe / Boat				K: Generator														19 = Community Announcer								6 = None 96 = Other		E. India				N. United Arab Emirates																	
F: Donkey																										7 = None 96 = Other		F. Japan				O. Yemen																	
																										8 = None 96 = Other		G. Kenya				P. South Sudan																	
																										9 = None 96 = Other		H. Libya				X. Other country																	
																										10 = None 96 = Other		I. Saudi Arabia				Y. Don't know country of origin																	

■	BOOK NUMBER			SHEET NUMBER 03		HOUSEHOLD NUMBER	<div style="border: 1px solid black; width: 20px; height: 20px; display: inline-block;"></div>
---	-------------	--	--	-----------------	--	------------------	--

SECTION 4: HOUSEHOLD CHARACTERISTICS (CONTINUED)								SECTION 5: AGRICULTURAL MODULE					
H31	H32	H33	H34	H35	H36	H37	H38	A1	A2	A3	A4		
Does any member in this household have a <b>functional account</b> in the Bank or any other financial institution? (Active in last 12 months)  1= Yes, have an account in the Bank 2= Yes, have an account in another financial institution 3= Yes, have both in a bank and another financial institution 4= No 8= DK	How many meals do household members <b>aged 5 years and above</b> usually eat on average per day ?  <i>(Record number of meals in the box provided)</i>	Does every member in this household use <b>soap</b> to bathe?  1 = Yes 2 = No 8 = DK	Did every member in this household take <b>sugar</b> (at least once a day) during the last week?  1 = Yes 2 = No 8 = DK	Do you have <b>salt</b> in the house now?  1 = Yes 2 = No 8 = DK	Does every member in this household have at least <b>two sets of clothing</b> ?  1 = Yes 2 = No 8 = DK	Does every member in this household have at least <b>one pair of shoes</b> ?  <i>WITH EXCEPTION OF CHILDREN AGED ONE YEAR OR LESS</i>  1 = Yes 2 = No 8 = DK	Does <b>every child</b> in this household (i.e. all those <b>under 18 years</b> ) have a <b>separate blanket</b> ?  1=Yes 2=No 7=N/A	Does this household currently undertake any of the following agricultural activities 1 =Yes, within EA 2 =Yes, outside EA but within District 3 = No  I. Exotic / Cross breed cattle	<b>IF YES IN A1, how many ..... does this household own?</b>	<b>IF YES IN A1, what is the main purpose of production?</b> 1=Home Consumption 2=Sale 7=N/A	List the crops grown on the holding in order of importance  Ser. No.	Crop Name	Crop Code If no crop grown, write 97
											1		
											2		
											3		
											4		
											5		
											6		
											7		
											8		
											9		
											10		
											11		

H39	H40
Is any member of the household involved in <b>any household-based enterprise</b> ?  1 = Yes 2 = No	What is the nature of the enterprise? <i>(If the household has more than one enterprise, record the one considered by the family as the most important)</i>  10 Agriculture 11 Trade 12 Food processing 13 Other manufacturing 14 Services 15 Hotels and Restaurant 16 Mining and Quarrying 96 Other 97 No enterprise

SECTION 6: DEATHS IN THE HOUSEHOLD IN THE LAST 12 MONTHS									
D1	D2	D3	D4	D5	D6	D7	D8		
Did any deaths occur in this household in the last 12 months? I mean from September 2013 upto December 2013. What about from 1st January 2014 to 27th August 2014?	What was the name of the deceased?  If no death in D1, write "Not Applicable" and end Interview	What was the sex of [NAME]?  1 = Male 2 = Female 7 = N/A	How old was [NAME] at the time of death (in completed years)?  <i>If age is less than one year, write 00</i>	What was the cause of [NAME'S] death? 1 = Disease 2 = Accident 3 = Violence 4 = Witchcraft 6 = Others 7 = N/A 8 = DK	<b>D6-D8-FOR FEMALES WHO DIED AGED 12-54 YEARS</b>  Was [NAME] pregnant at the time of her death?  1= Yes 2= No 7= N/A 8= DK			Did [NAME] die while giving birth?  1= Yes 2= No 7= N/A 8= DK	Did [NAME] die within 6 weeks after delivery?  1= Yes 2= No 7= N/A 8= DK
	1)								
	2)								
	3)								
	4)								
	5)								

<b>If there is any "YES" in A1, ask Question A5, otherwise write 97 in Question A5</b>		
<b>A5</b>  Which of the household members is the lead holder?  <i>(Record the person number of holder from P0) If not listed, record 00</i>	<b>A6</b>  Does the holding carry out any type of irrigation? 1=Yes 2=No 7=N/A	<b>A7</b>  Does this household own agricultural land?  1 = Yes 2 = No

	01A	<div style="border: 1px solid black; width: 20px; height: 20px; display: inline-block;"></div>
--	-----	--

DISTRICT OF PREVIOUS RESIDENCE (P12)					H7-H13, H17			
Central	Eastern	Northern	Western	Country of Previous Residence	Distance Conversion			
					1 mile = 1.6 km			
101 Kalangala	201 Bugiri	301 Adjumani	401 Bundibugyo	671 Kenya	Mile	Km	Mile	Km
102 Kampala	202 Busia	302 Apac	402 Bushenyi	672 Tanzania	0.5 =	0.8	16.5 =	26.4
103 Kiboga	203 Iganga	303 Arua	403 Hoima	673 Rwanda	1.0 =	1.6	17.0 =	27.2
104 Luwero	204 Jinja	304 Gulu	404 Kabale	674 Burundi	1.5 =	2.4	17.5 =	28.0
105 Masaka	205 Kamuli	305 Kitgum	405 Kabarole	675 South Sudan	2.0 =	3.2	18.0 =	28.8
106 Mpigi	206 Kapchorwa	306 Kotido	406 Kasese	676 Dem. Rep. Of Congo	2.5 =	4.0	18.5 =	29.6
107 Mubende	207 Katakwi	307 Lira	407 Kibaale	677 Somalia	3.0 =	4.8	19.0 =	30.4
108 Mukono	208 Kumi	308 Moroto	408 Kisoro	678 Other Africa	3.5 =	5.6	19.5 =	31.2
109 Nakasongola	209 Mbale	309 Moyo	409 Masindi	681 United Kingdom	4.0 =	6.4	20.0 =	32.0
110 Rakai	210 Pallisa	310 Nebbi	410 Mbarara	682 Other Europe	4.5 =	7.2	20.5 =	32.8
111 Sembabule	211 Soroti	311 Nakapiripirit	411 Ntungamo	683 Asia 684 USA	5.0 =	8.0	21.0 =	33.6
112 Kayunga	212 Tororo	312 Pader	412 Rukungiri	685 Canada	5.5 =	8.8	21.5 =	34.4
113 Wakiso	213 Kaberamaido	313 Yumbe	413 Kamwenge	686 Central & Latin America	6.0 =	9.6	22.0 =	35.2
114 Lyantonde	214 Mayuge	314 Abim	414 Kanungu	687 Australia	6.5 =	10.4	22.5 =	36.0
115 Mityana	215 Sironko	315 Amolatar	415 Kyenjojo	688 Oceania	7.0 =	11.2	23.0 =	36.8
116 Nakaseke	216 Amuria	316 Amuru	416 Buliisa	689 Non-Ugandan-Not Stated	7.5 =	12.0	23.5 =	37.6
117 Buikwe	217 Budaka	317 Dokolo	417 Ibanda		8.0 =	12.8	24.0 =	38.4
118 Bukomasimbi	218 Bududa	318 Kaabong	418 Isingiro		8.5 =	13.6	24.5 =	39.2
119 Butambala	219 Bukedea	319 Koboko	419 Kiruhura		9.0 =	14.4	25.0 =	40.0
120 Buvuma	220 Bukwo	320 Maracha	420 Buhweju		9.5 =	15.2	25.5 =	40.8
121 Gomba	221 Butaleja	321 Oyam	421 Kiryandongo		10.0 =	16.0	26.0 =	41.6
122 Kalungu	222 Kaliro	322 Agago	422 Kyegegwa		10.5 =	16.8	26.5 =	42.4
123 Kyankwanzi	223 Manafwa	323 Alebtong	423 Mitooma		11.0 =	17.6	27.0 =	43.2
124 Lwengo	224 Namutumba	324 Amudat	424 Ntoroko		11.5 =	18.4	27.5 =	44.0
	225 Bulambuli	325 Kole	425 Rubirizi		12.0 =	19.2	28.0 =	44.8
	226 Buyende	326 Lamwo	426 Sheema		12.5 =	20.0	28.5 =	45.6
	227 Kibuku	327 Napak			13.0 =	20.8	29.0 =	46.4
	228 Kween	328 Nwoya			13.5 =	21.6	29.5 =	47.2
	229 Luuka	329 Otuke			14.0 =	22.4	30.0 =	48.0
	230 Namayingo	330 Zombo			14.5 =	23.2	30.5 =	48.8
	231 Ngora				15.0 =	24.0	31.0 =	49.6
	232 Serere				15.5 =	24.8	31.5 =	50.4
					16.0 =	25.6	32.0 =	51.2