



# **National Population and Housing Census 2014**

## **Area Specific Profiles**

---

### **Mityana District**

---

**April 2017**

*This report presents findings of National Population and Housing Census (NPHC) 2014 undertaken by the Uganda Bureau of Statistics (UBOS). Additional information about the Census may be obtained from the UBOS Head Office, Statistics House, Plot 9 Colville Street, P. O. Box 7186, Kampala, Uganda; Telephone: +256-414 706000 Fax: +256-414 237553; E-mail: [ubos@ubos.org](mailto:ubos@ubos.org); Website: [www.ubos.org](http://www.ubos.org)*

*Cover Photos: Uganda Bureau of Statistics*

### **Recommended Citation**

*Uganda Bureau of Statistics 2017, The National Population and Housing Census 2014 – Area Specific Profile Series, Kampala, Uganda.*

## FOREWORD

Demographic and socio-economic data are useful for planning and evidence-based decision making in any country. Such data are collected through Population Censuses, Demographic and Socio-economic Surveys, Civil Registration Systems and other Administrative sources. In Uganda, however, the Population and Housing Census remains the main source of demographic data, especially at the sub-national level.

Population Census taking in Uganda dates back to 1911 and since then the country has undertaken five such Censuses. The most recent, the National Population and Housing Census 2014, was undertaken under the theme 'Counting for Planning and Improved Service Delivery'. The enumeration for the 2014 Census was conducted in August/September 2014. The Uganda Bureau of Statistics (UBOS) worked closely with different Government Ministries, Departments and Agencies (MDAs) as well as Local Governments (LGs) to undertake the census exercise.

The 2014 Census provides several statistics on different aspects of the population. These include the population size and distribution which is a key indicator used for resource allocation, measurement of the extent of service delivery, decision making and budgeting among others. Other information includes the characteristics of the population, those of the dwellings they live in and information on the Household based Agricultural activities.

On behalf of the Bureau, I would like to appreciate the Government of Uganda for providing the necessary resources and infrastructure for undertaking the National Population and Housing Census (NPHC) 2014. In addition, the Bureau would like to thank the Development Partners, particularly United Kingdom Aid (UKAid), the United Nations Fund for Population Activities (UNFPA) and the United Nations Children's Fund (UNICEF) for providing technical and financial support towards the Census. The Bureau would also like to thank the Media for creating awareness about the Census 2014 and, most importantly, the individual households who voluntarily provided the required information.

**Together We Count**



**Ben Paul Mungyereza**  
**EXECUTIVE DIRECTOR**

## PREFACE

The Uganda Bureau of Statistics Act No. 12 of 1998 provides for the Minister responsible for Planning to direct ‘that a Census be taken’ on any matter specified in the Act. This was the legal basis for conducting the National Population and Housing Census (NPHC) 2014. The long-term objective of the NPHC 2014 is to ensure availability of bench-mark demographic and socio-economic data for use in planning, evidence based decision making, policy formulation and programme evaluation.

In order to support the planning process, the results from the Census 2014 are being released in phases as and when they become available. The Provisional Results Report was released in November, 2014 followed by the Final Results which were released in March 2016 and the Sub-county Reports in June 2016. These reports collectively provided information on the characteristics of the population and households at the national, district and sub-county levels.

The **Constituency Profiles Series** presents the characteristics of the population and household as well as the housing conditions of the population in each parliamentary constituency of the district. For convenience, however, the profiles of all constituencies in one district have been published in one report. In each report, the Appendix has selected national level tables for reference.

Uganda Bureau of Statistics (UBOS) is in the process of producing several other reports including the National Analytical Results (Monograph Series), District-level Analytical Reports and the Census Atlas. These will present detailed findings covering more indicators on different thematic areas. In addition to the above reports, the Bureau will be providing electronic datasets to facilitate deeper analysis of the data.

The Bureau, appeals to Policy Makers, Researchers and Academicians to make extensive use of this information for policy analysis and evidence-based decision-making at different levels of service delivery. Together we can harness information resources from the Census to improve service delivery and create a better Uganda.

## ABOUT THE INDICATORS

### Household

A group of persons who usually eat and live together. A household may be comprised of one or more persons provided they share the same meal and sleep under the same roof. The persons may be related usually in a family setting or may not be related.

### Household population

All those persons who were enumerated in households. It excludes population which was enumerated on the streets (floating population) or those who were living in Institutions such as correction centres, religious institutions and health facility in-patients.

### Population size

Refers to the total population count in the country or any geographical location based on the census reference night. It includes all those persons who were enumerated in households and institutions.

### Population by age groups or specific age

This is the total count of the household population by a given age, age- groups or special age-groups. It excludes the non-household population.

### Education characteristics/indicators

The indicators refer to specific age groups. The official school going age is 6-12 years for primary education, 13-18 years for secondary education and 19-24 years for tertiary education. However, the analysis includes the age-group 6-15 years to take into consideration those who start primary level at more than 6 years.

For those who have never been to school, we consider the age group 15 years and above on the assumption that by age 15, there are minimal chances for one joining school for the first time.

### Illiteracy

This is defined as lack of the ability to read and write with understanding in any language. Persons aged 10 years and above who could not read and write responded (Codes 2, 3 and 4) to Question P21 of the Household Questionnaire. The objective of using this indicator is to shed light on the areas that need improvements in the delivery of the services.

### Ownership of a birth certificate

Ownership includes all those persons (adults or children) who either had a Short Birth Certificate or a Long Birth Certificate during census enumeration. The analysis is based on specific age categories.

## **Parental survival and Orphanhood**

Parental survival and orphanhood are derived variables which are based on two questions (P10 and P11), whether or not the biological mother/father of the respondent was still alive at the time of the census. Orphans are persons below the age of 18 who have lost any or both of their parents.

## **Disability**

The questions P14 to P17 on functional difficulty are used to determine whether the person has a disability or not. It includes all persons aged 2 years and above. An individual is considered to be disabled if he/she has any one of the 4 questions with at least some difficulty.

Multiple disabilities refer to all persons who reported more than one functional difficulty.

## **Marriage and Child Bearing**

Marital Status refers to all those persons who are living together and consider themselves as married. It includes all forms of consensual union whether legal or non-legal, religious or cultural or non-consensual union.

## **Employment**

Questions on employment were eligible for all household population aged 10 years and above. Currently the age category for the working population 16 -64 years. The analysis is based on specific age groups of children 10-15 years, (other countries define a child as anyone below the age of 16, hence the age group 10-15 years).

## **Construction materials of the dwelling**

The information is derived from the question on “materials used for the roof, floor and wall. Permanent floor materials include concrete, cement screed, tiles, wood, while permanent roof materials include roof tiles, iron sheets, asbestos and concrete.

## **Status of dwelling**

The permanency nature of construction materials determines the status of the dwelling. The idea is to be able to classify a dwelling unit as temporary or permanent.

## **Access to community services**

The choice of indicators is for those households that are beyond the 5 km radius for access to services (access to public/private schools, health facilities and a police station/post). The nearness of the service to the household does not take into consideration whether the services are utilized by the household or not.

## **Other environmental conditions – waste disposal**

Any household was considered to have proper waste disposal if at the time of the census it disposed off solid waste using registered or unregistered waste vendors as well as using skip bins provided by the Municipal authority.

### **Owner occupied dwellings**

These are disaggregated by household headship. The percentages for male and female headed households may not add up to 100. For instance among the female headed households, what proportion are owner occupied? Among the male headed households, what proportion are owner occupied?

### **Source of energy for lighting – electricity**

In the household questionnaire, Question H14 had about four forms of electricity used for lighting (grid, generator, solar, community/thermal plant). Any household that indicated using any of the four forms was considered to have access to electricity.

### **Household based agricultural activities**

A household engaged in agriculture is one which is engaged in any of the following:

Growing of any crops, or rearing animals or involved in bee keeping or forestry/tree growing, and any fish farming. Agricultural activities outside the district were not considered.

## TABLE OF CONTENTS

FOREWORD .....	i
PREFACE.....	ii
ABOUT THE INDICATORS .....	iii
INTRODUCTION .....	1
1.1 General Information about Uganda .....	1
1.2 About the National Population and Housing Census 2014 .....	1
1.3 National Highlights of the 2014 Census Results .....	2
AREA SPECIFIC PROFILES.....	18
MITYANA DISTRICT .....	19
MITYANA MUNICIPALITY CONSTITUENCY .....	27
BUSUJJU COUNTY CONSTITUENCY .....	36
MITYANA COUNTY NORTH CONSTITUENCY .....	45
MITYANA COUNTY SOUTH CONSTITUENCY .....	54
APPENDICES .....	63
Appendix 1: Population by Sex and Type of Residence by District, Uganda 2014..	64
Appendix 2: The Household Questionnaire and code list for the National Population and Housing Census 2014 .....	67
.....	75



## LIST OF MAPS

- Map 1: Districts of Uganda as of 1st July 2016
- Map 2: Mityana District Parliamentary Constituencies as of 1st July, 2016
- Map 3: Distribution of Population by Sub-county; Mityana District, 2014
- Map 4: Percentage Distribution of Population Aged 6-12 Years Not in School; Mityana District, 2014
- Map 5: Percentage Distribution of Youth Population aged 18-30 Years, Not in School and Not Working; Mityana District, 2014
- Map 6: Percentage Distribution of Population aged 10-19 Years, Ever Married; Mityana District, 2014
- Map 7: Percentage Distribution of Orphans aged 0-17 Years; Mityana District, 2014
- Map 8: Percentage Distribution of Households 5 Km and over to the nearest Public Health Facility; Mityana District, 2014
- Map 9: Percentage Distribution of Households without access to Safe Water; Mityana District, 2014
- Map 10: Percentage Distribution of Households with no Toilet facility; Mityana District, 2014
- Map 11: Percentage Distribution of Households having less than 2 meals a day; Mityana District, 2014

## INTRODUCTION

### 1.1 General Information about Uganda

#### Location and Size

Uganda is located in East Africa and lies across the equator, about 800 kilometres inland from the Indian Ocean. It lies between Latitude 1° 29' South and 4° 12' North of the Equator as well as Longitude 29° 34' East and 35° 0' East of Greenwich. The country is landlocked, bordered by Kenya in the East; South Sudan in the North; Democratic Republic of Congo in the West; Tanzania in the South; and Rwanda in South West. It has a total area of 241,551 square kilometres, of which the land area covers 200,523 square kilometres.

#### Administration

The country was divided into 116 districts (as at August/September 2014). The districts were further subdivided into 200 Counties, 1,378 Sub-counties and 6,495 Parishes. The role of these administrative units is to implement and monitor government programmes at the respective levels. Overtime, the administrative units have been sub-divided with the aim of easing administration and improving the delivery of services.

### 1.2 About the National Population and Housing Census 2014

The overall objective of the National Population and Housing Census (NPHC) 2014 was to provide data that are required for planning at all levels. The NPHC 2014 had three distinct phases namely, the Preparatory Phases, the Enumeration Phase and the Post Enumeration Phase.

The preparatory work for the Census 2014 started in 2008 with development of the overall strategy of undertaking the census. Other preparatory activities included development of the questionnaires, undertaking of the census mapping, conducting the Pilot Census, carrying out the census advocacy and publicity and other administrative support services.

The enumeration phase included recruitment and training of field staff, delivery of enumeration materials, conducting the main census enumeration and retrieval of materials. The census activities in the district were conducted under the overall responsibility of the Chief Administrative Officers (CAOs) or the Executive Director in the case of Kampala Capital City Authority (KCCA). All field staff underwent mandatory ten (10) day training on Census concepts and procedures.

The Census Reference Night was the night of 27th August 2014 and the enumeration was conducted on a de facto basis. The enumeration started on 28th August and continued to 7th September 2014. The Enumerators moved from household to household within the assigned

Enumeration Areas (EAs) and administered the Census questionnaire to the Head of household or any other assigned household member through face to face interviews.

The data processing was centrally managed at the Bureau offices. The filled questionnaires were captured with scanning technology and the information extracted using automatic character recognition.

Data quality assurance enhances credibility, usability and utility of data. The Post Enumeration Survey (PES) was used as one of the tools to evaluate the quality of the census data through testing the completeness of coverage and accuracy. The PES enumeration was undertaken in October/November 2014, and it covered 800 EAs distributed in all the districts and Kampala Capital City Authority (KCCA).

### 1.3 National Highlights of the 2014 Census Results

The results of the NPHC 2014 will be published in phases. The Provisional Census Results were disseminated in November 2014. These gave the number of households and the population by sex for administrative areas down to sub-county level. The first set of the final results of the Census 2014 were published in the Main Report which was released in March 2016. The report includes information on the population size and distribution as well as characteristics of the population and the dwellings they live in. The results showed that the total population of Uganda in 2014 was 34.6 million persons as shown in Table 1.

Between 2002 and 2014, the population increased from 24.2 million to 34.6million. This implied average growth rate of 3.0 percent per annum.

**Table 1: Population size and Population Growth Rates, Uganda, 1969-2014**

Census year	Male	Female	Total	Inter-censual Period	Average Annual Growth Rate (%)
1969	4,812,447	4,722,604	9,535,051		
1980	6,259,837	6,376,342	12,636,179	1969-1980	2.7
1991	8,185,747	8,485,558	16,671,705	1980-1991	2.5
2002	11,824,273	12,403,024	24,227,297	1991-2002	3.2
2014	17,060,832	17,573,818	34,634,650	2002-2014	3.0

The distribution of the population among the districts is given in Appendix Table 1. Wakiso district had a population of nearly two (2) million, accounting for about six percent of the total population, while some districts were less populous, Kalangala district being the smallest with a population of 53,406 persons. As of 2016, Uganda had a total of 259 urban centres with a total

urban population of 7.5 million persons. Thus, 20.2 percent of the total population lived in urban areas. Kampala Capital City was the most populous urban centre with 1.5 million persons.

Table 2 gives the distribution of the population by age. The Table shows that the population of Uganda is quite young, with the proportion of children (below 15 years of age) being 47.9 percent, while the 'Older persons' (aged 60 years and above) constituted only 2.9 percent.

**Table 2: Population Distribution by Age, Sex, Residence, and Population Type, Uganda, 2014**

Age	Sex		Residence		Population Type		Total
	Male	Female	Rural	Urban	Household	Institutional	
0-4	3,173,950	2,957,078	4,950,513	1,180,515	6,107,155	23,873	6,131,028
5-9	2,834,456	2,717,222	4,557,328	994,350	5,532,230	19,448	5,551,678
10-14	2,462,789	2,457,654	4,024,478	895,965	4,850,926	69,517	4,920,443
15-19	1,917,797	2,038,836	3,052,854	903,779	3,850,134	106,499	3,956,633
20-24	1,442,455	1,743,137	2,263,734	921,858	3,093,846	91,746	3,185,592
25-29	1,143,467	1,342,709	1,743,019	743,157	2,434,180	51,996	2,486,176
30-34	908,447	1,043,292	1,429,283	522,456	1,914,351	37,388	1,951,739
35-39	726,355	809,482	1,148,883	386,954	1,512,237	23,600	1,535,837
40-44	617,034	655,383	991,874	280,543	1,252,338	20,079	1,272,417
45-49	452,081	469,043	728,958	192,166	909,783	11,341	921,124
50-54	371,126	436,977	657,004	151,099	797,368	10,735	808,103
55-59	224,765	255,519	394,952	85,332	475,744	4,540	480,284
60-64	195,283	244,770	369,504	70,549	434,218	5,835	440,053
65-69	136,107	165,043	257,208	43,942	299,351	1,799	301,150
70-74	115,862	161,374	237,097	40,139	273,582	3,654	277,236
75-79	69,095	81,378	128,636	21,837	149,567	906	150,473
80-84	51,871	79,398	110,736	20,533	127,984	3,285	131,269
85-89	21,572	30,204	43,246	8,530	50,735	1,041	51,776
90-94	15,125	22,046	29,989	7,182	34,339	2,832	37,171
95 and above	18,212	26,256	37,186	7,282	41,231	3,237	44,468
<b>Total</b>	<b>16,897,849</b>	<b>17,736,801</b>	<b>27,156,482</b>	<b>7,478,168</b>	<b>34,141,299</b>	<b>493,351</b>	<b>34,634,650</b>

## Characteristics of the Population

About 87 percent of the boys and girls of primary school going age (6-12 years) were attending school, while about 1 in every 10 children of primary school going age children had never been school. The Illiteracy status Rate was 72 percent among persons aged 10 years and above. Out of the 17.7 million persons of working age (aged 14 to 64 years), 13.8 million (78 percent) were working in the (Labour Force), with the most common occupation being subsistence farming (65%).

Vulnerability can be assessed at personal and household level. At personal level, vulnerability is a state of being in which a person is likely to be in a risky situation, suffering significant physical, emotional, or mental harm that may result in his/her human rights not being fulfilled (MoGLSD, 2004). The 2014 Census measured some of the dimensions of Child Vulnerability. The results show high levels of vulnerability as highlighted below;

- One in every eight (12.5%) of children aged 6 – 12 Years were not in school;
- Two out of every 25 (8%) children less than 18 years of age were orphaned;
- One in every 16 (6%) of the girls aged 12 to 17 years had already given birth;
- One in every 15 (6.5%) of the girls aged 12 – 17 had ever been in a marriage union;
- Seven out of every 10 Children (70%) aged less than five years did not have a Birth certificate.

There was a general improvement in the demographics of the population with the Total Fertility Rate falling to 5.8 children per woman while the infant Mortality Rate decreased to 53 deaths per 1,000 live births. The Life Expectancy at Birth also increased to 63.3 years

## Characteristics of the Households

The household population consisted of (99 percent of the total population.) The Census 2014 enumerated a total of 7.3 million households with a population of 34.1 million .This gave an Average Household Size of 4.7.

The ‘Tadooba’ remained the most common source of lighting being used by 52 percent of the households. Only one in every five households (20%) had access to electricity. On the other hand, Wood fuel was the most common fuel used for cooking, with only six percent (one in every 16) of the households using other fuels. Sanitation remains a challenge with only thirty percent of the households with unimproved toilet facilities. About 600,000 households did not have any toilet facility at all.

The majority of the households (69 percent) derived their livelihood from subsistence farming. Only 27% of the households depended on earned income. One in every nine households (11%) were having only one meal per day (for adults). Some of the households (11%) received remittances from abroad in cash or in kind. More than two thirds of the households (69%) had at least one member owning a Mobile phone. Ownership of a Mobile among persons aged 10

years and above was at 38 percent. The radio remains a dominant source of information and about 60 percent of the households owned a radio.

### **Housing Conditions**

The housing sector recorded a general improvement. Overall, 67 percent of households in Uganda resided in detached dwellings. However, nearly half (47%) households resided in dwellings with only one room for sleeping. There was also significant improvement in the materials used for construction of the dwellings. About 44% of the households resided in dwellings constructed with permanent wall material. The equivalent shares for roof and floor were 70 and 34 percent respectively.

### **Agricultural Activities**

Agriculture has remained a dominant sector in the economy. The Census revealed that a total of 5.8 million households engage in agriculture. More than two thirds (69 percent) of households derived their livelihoods from subsistence farming as the main source of earning. In terms of employment, the majority of the working population (65 percent) were subsistence farmers.

## POPULATION SIZE

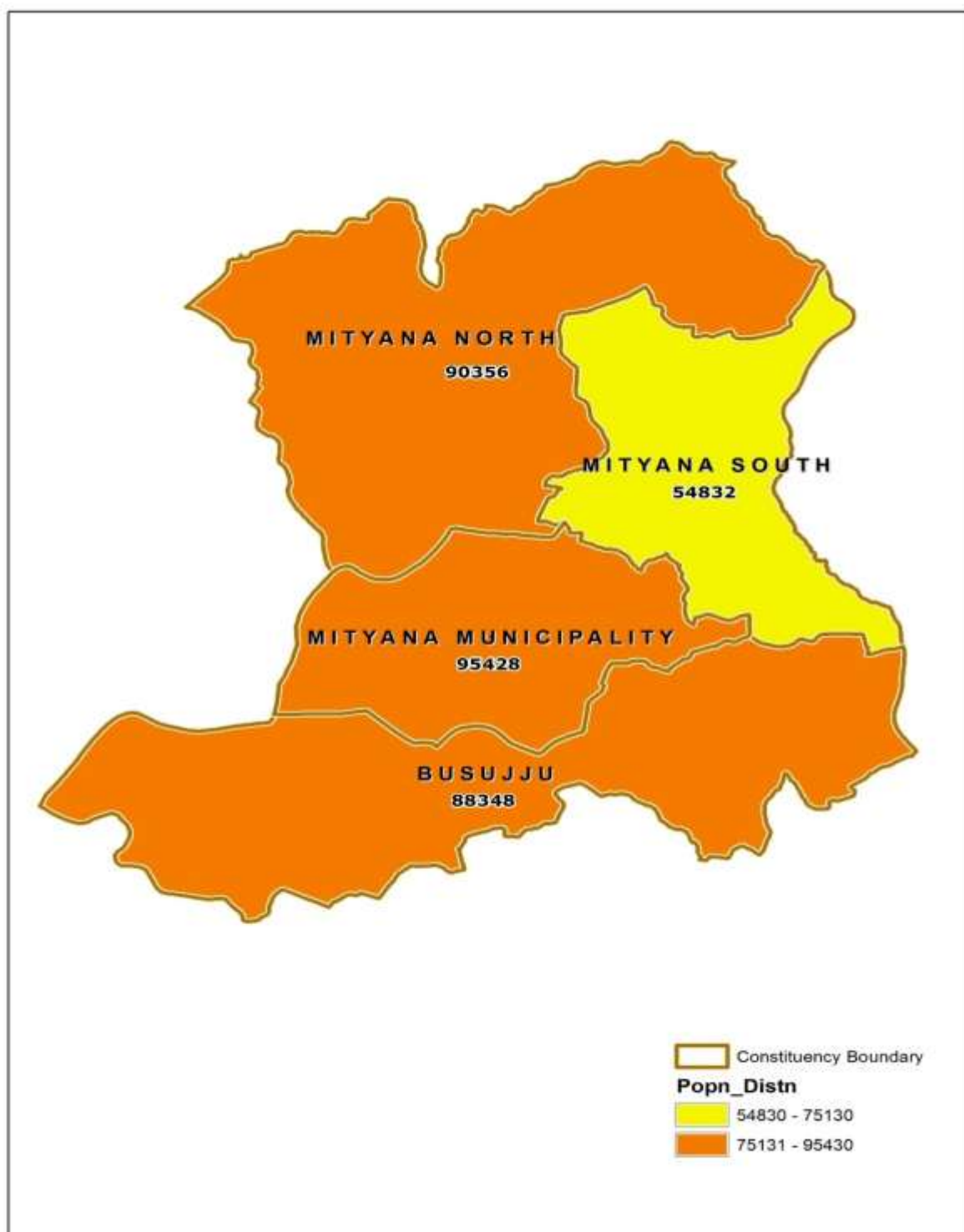
**Table 3: Total population by age group and sex, Mityana District, 2014**

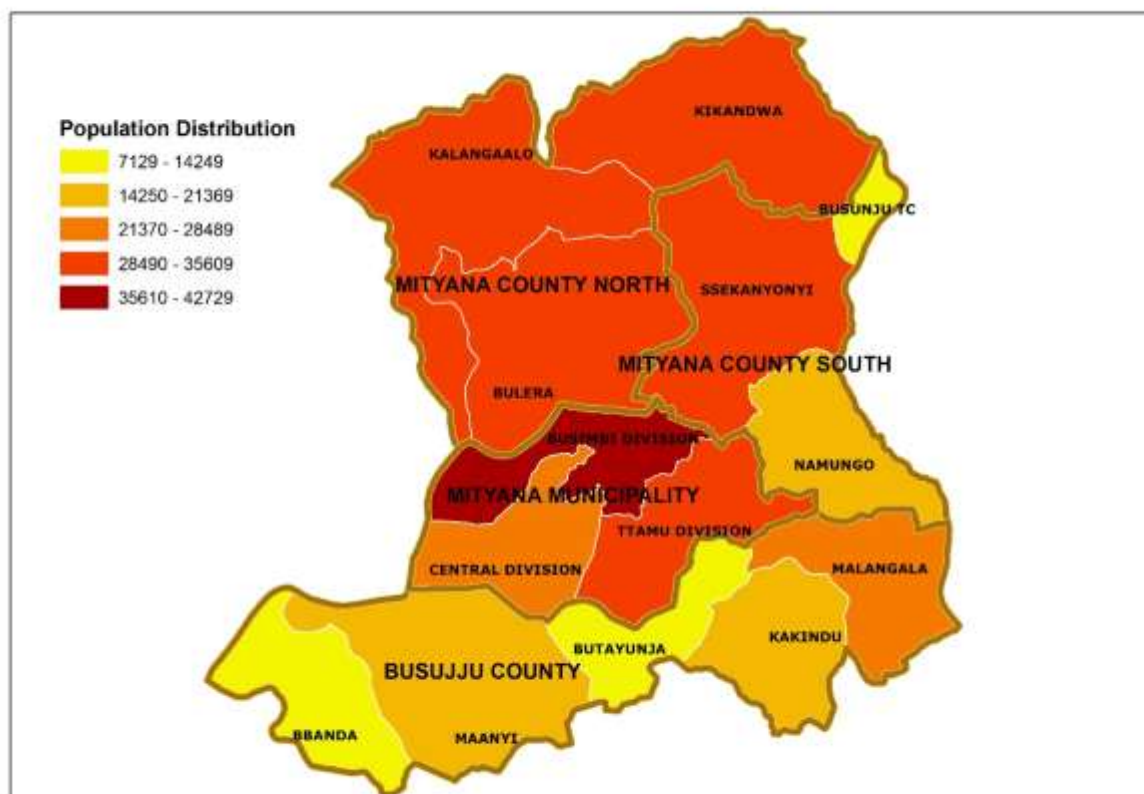
Age group	Male	Female	Total
0-9 years	56,610	50,593	107,203
10-19 years	43,862	41,904	85,766
20-39 years	40,678	42,974	83,652
40-59 years	17,074	18,504	35,578
60 years and above	7,493	9,272	16,765
Total	165,717	163,247	328,964

**Map 1: Districts of Uganda as of 1<sup>st</sup> July, 2016**

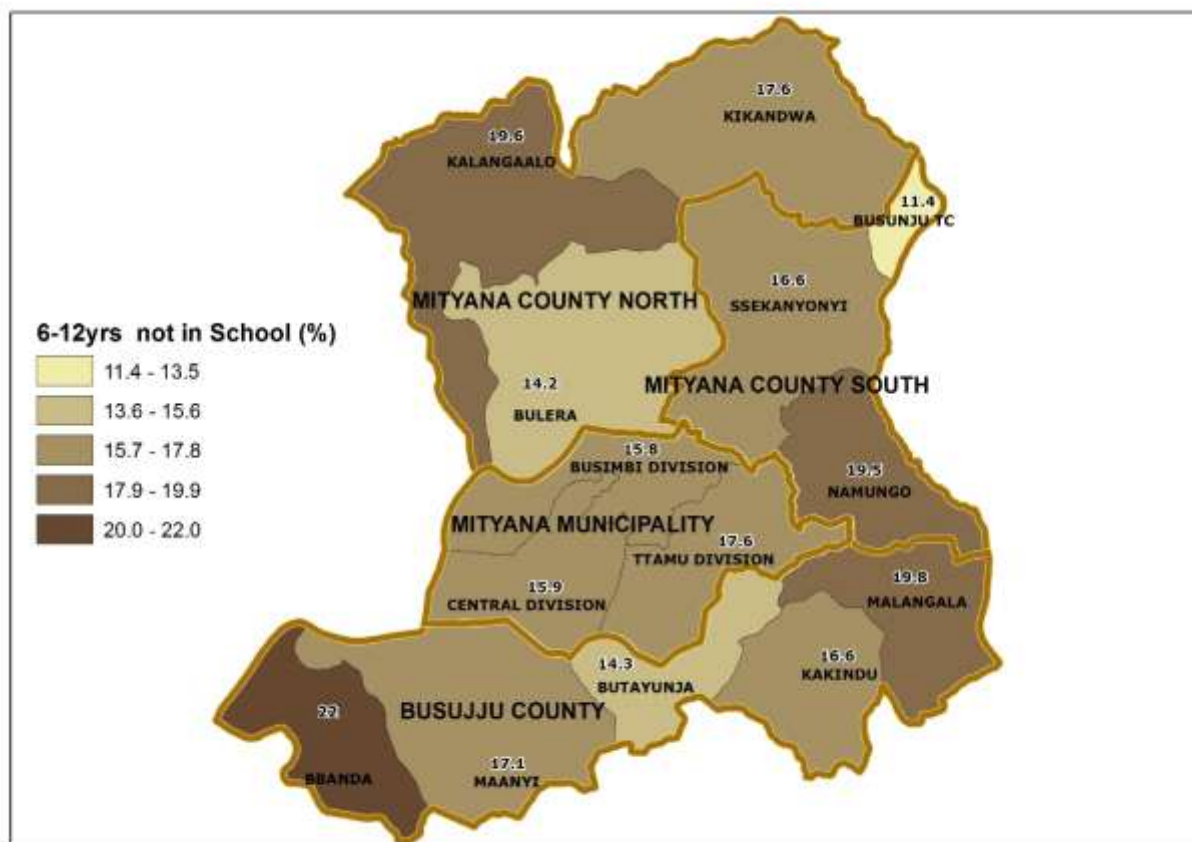




Map 2: Mityana District Parliamentary Constituencies as of 1<sup>st</sup> July, 2016

**Map 3: Distribution of Population by Sub-county; Mityana District, 2014**

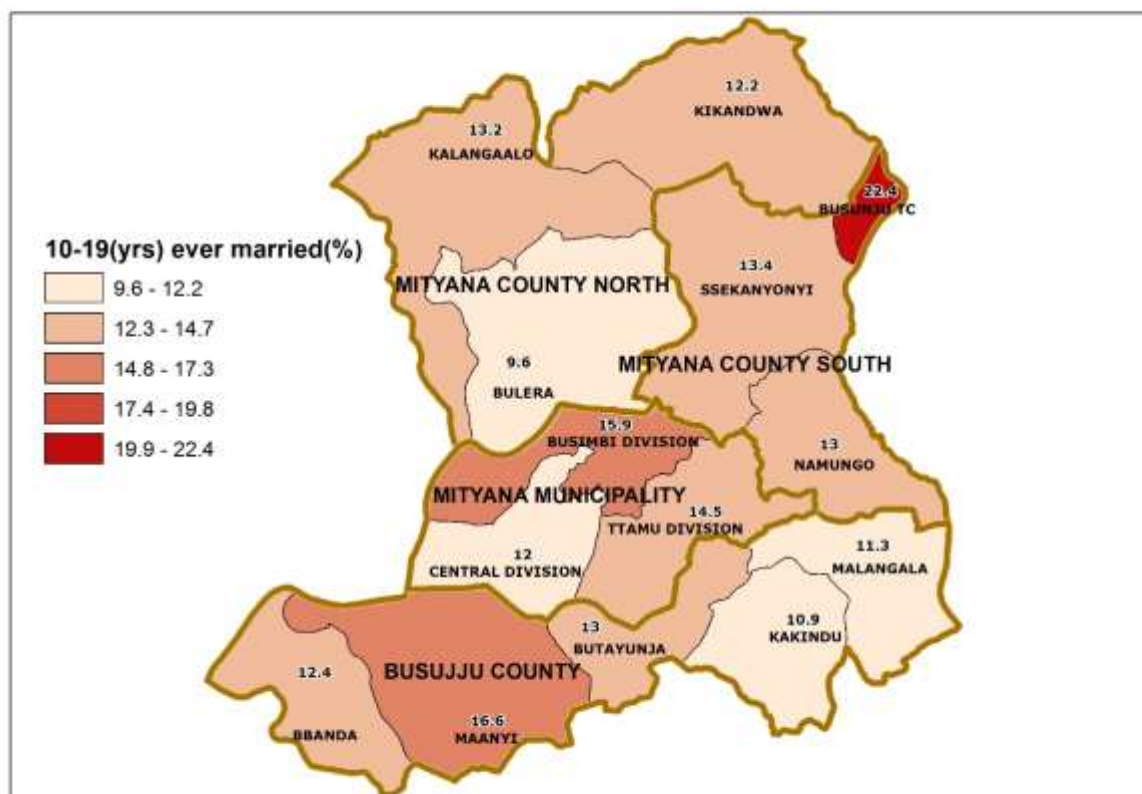
Map 4: Percentage Distribution of Population Aged 6-12 Years Not in School; Mityana District, 2014



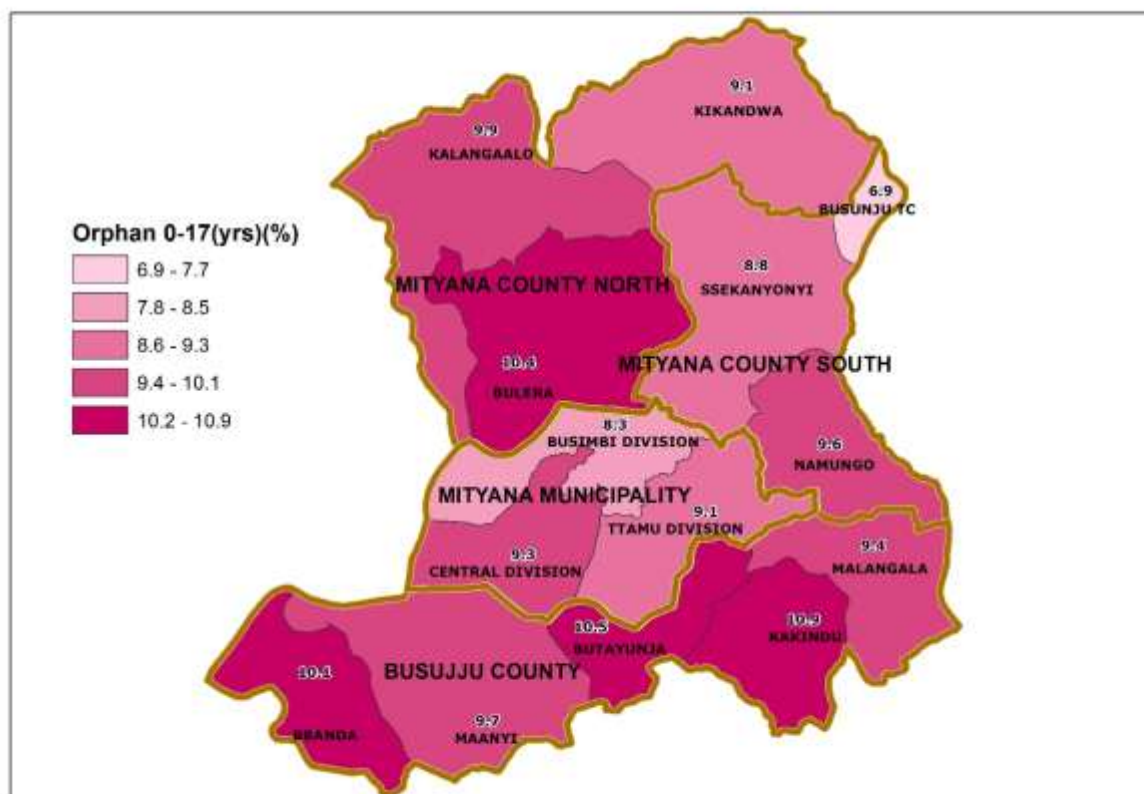
**Map 5: Percentage Distribution of Youth Population aged 18-30 Years, Not in School and Not Working; Mityana District, 2014**



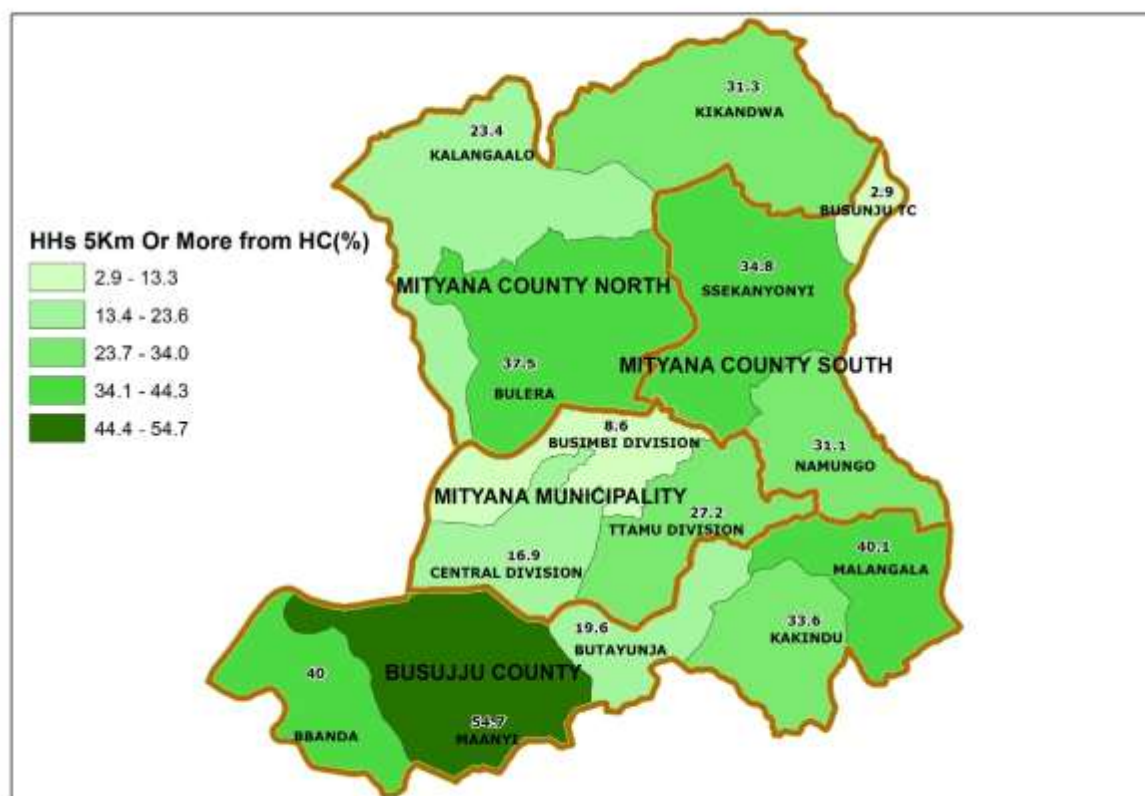
Map 6: Percentage Distribution of Population aged 10-19 Years, Ever Married; Mityana District, 2014



Map 7: Percentage Distribution of Orphans aged 0-17 Years; Mityana District, 2014

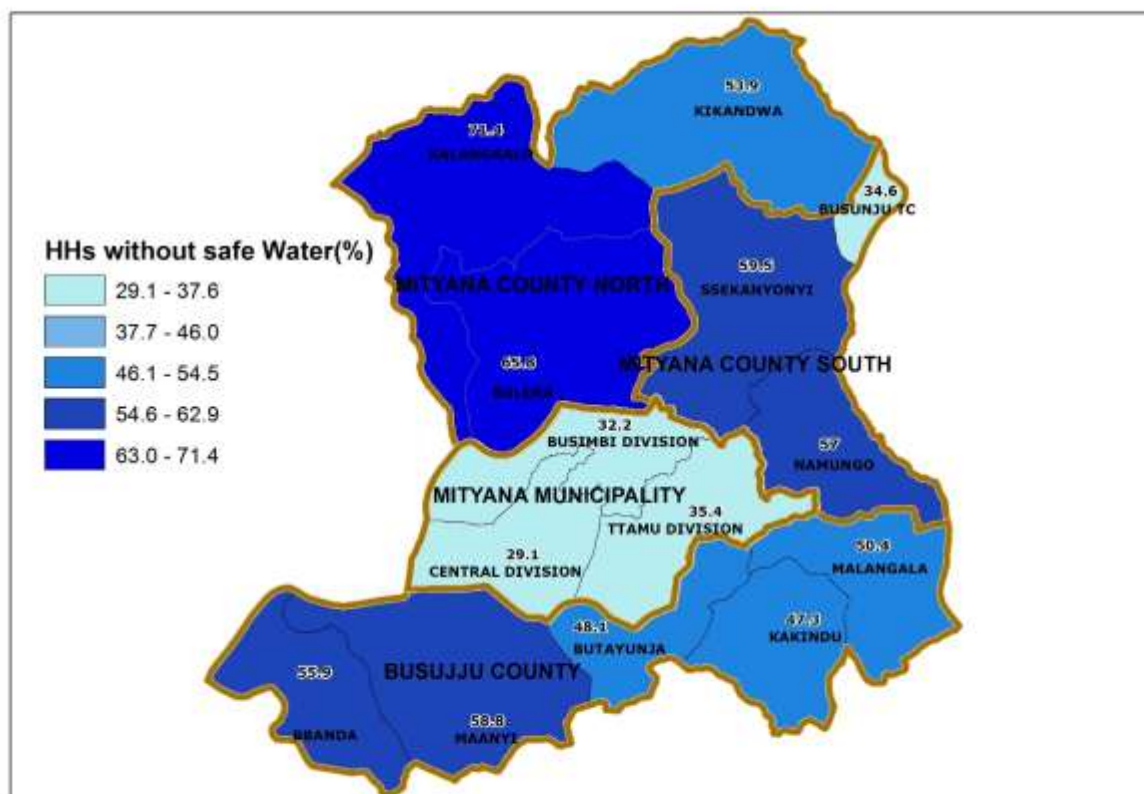


**Map 8: Percentage Distribution of Households 5 Km and over to the nearest Public Health Facility; Mityana District, 2014**



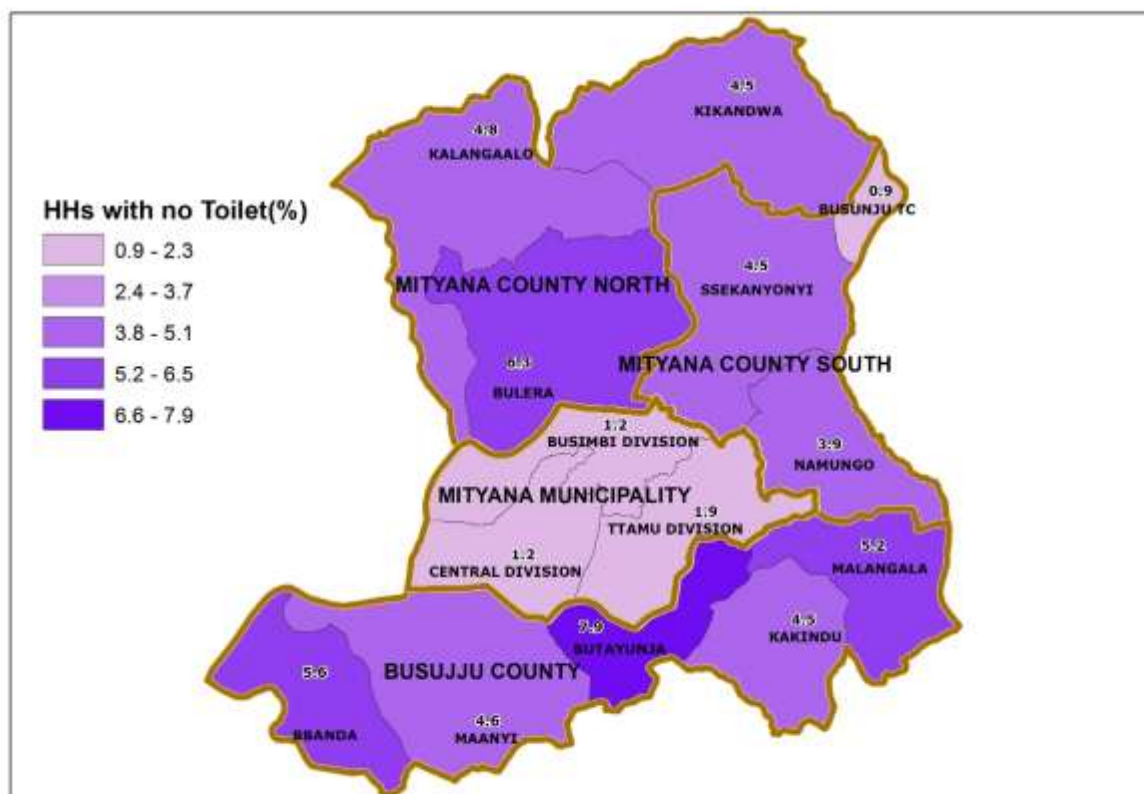


Map 9: Percentage Distribution of Households without access to Safe Water; Mityana District, 2014

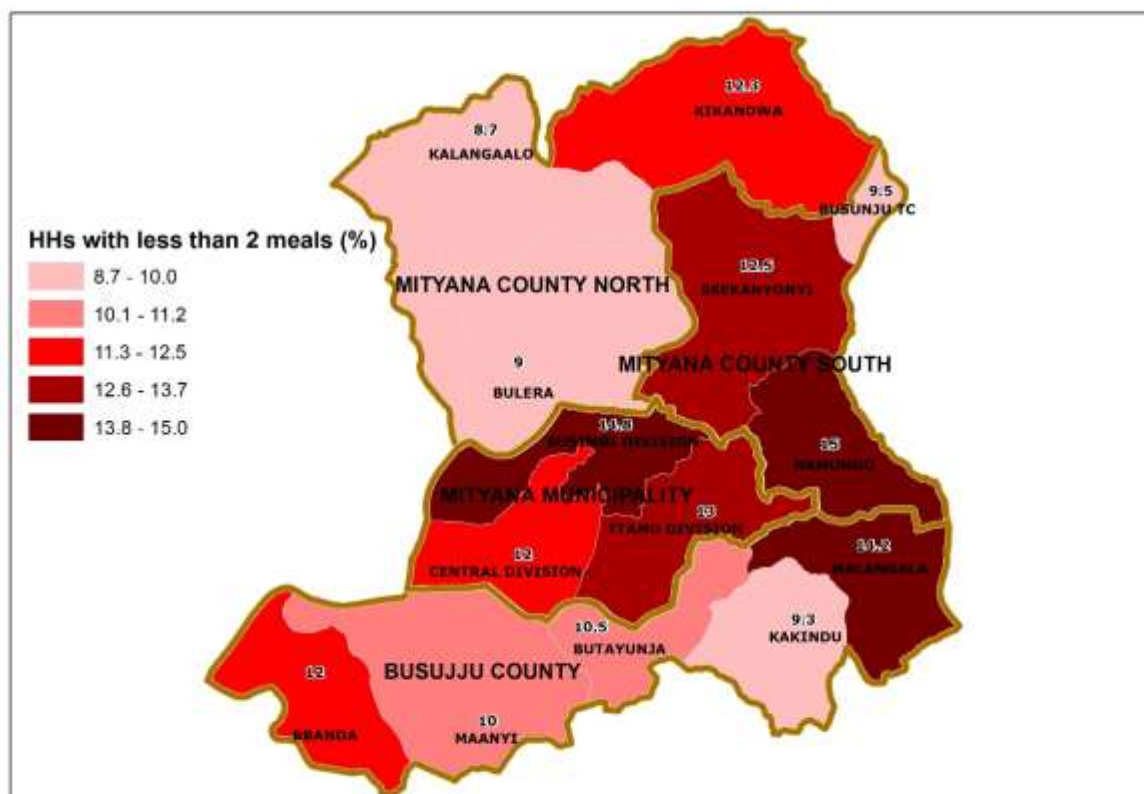




Map 10: Percentage Distribution of Households with no Toilet facility; Mityana District, 2014



Map 11: Percentage Distribution of Households having less than 2 meals a day; Mityana District, 2014



## **AREA SPECIFIC PROFILES**

## **MITYANA DISTRICT**

### **LIST OF TABLES**

- 1 Population
- 2 Education
- 3 Illiteracy status
- 4 Ownership of a Birth Certificate
- 5 Parental Survival and Orphanhood
- 6 Disability
- 7 Marriage and Child Bearing
- 8 Working Status
- 9 Use of ICT
- 10 Housing Conditions
- 11 Access to Community Services
- 12 Household Health and Hygiene
- 13 Household Assets
- 14 Other Household Characteristics
- 15 Household Based Agricultural Activities

**1: POPULATION**

<b>1.1: Population Size</b>	<b>Number</b>	<b>Percent</b>
Total population	165,717	
Total male population	165,717	50.4
Total female population	163,247	49.6
Sex ratio (males per 100 females)	101.5	
<b>1.2: Households</b>	<b>Number</b>	<b>Percent</b>
Total households	79,665	
Households headed by males	56,760	71.2
Households headed by females	22,905	28.8
Households headed by children (aged 10-17 years)	583	0.7
Households headed by youth (aged 18-30 years)	23,051	28.9
Households headed by older persons (aged 60 years and above)	13,794	17.3
<b>1.3: Population by Age groups</b>	<b>Number</b>	<b>Percent</b>
Population aged 0-17 years	175,734	54.4
Population aged 18-30 years	69,200	21.4
Population aged 31-59 years	61,474	19.0
Population aged 60 years and over	16,574	5.1
<b>1.4: Population by Special Age groups</b>	<b>Number</b>	<b>Percent</b>
Population aged Less than one Year	10,711	3.3
Population aged 0-4 Years	55,552	17.2
Population aged 0-8 Years	97,351	30.1
Population aged 2-8 Years	76,221	23.6
Population aged 2-17 Years	154,604	47.9
Population aged 6-12 Years	68,308	21.1
Population aged 6-15 Years	94,711	29.3
Population aged 10-15 Years	54,131	16.8
Population aged 10-17 Years	69,083	21.4
Population aged 15-24 Years	64,440	20.0
Population aged 16-64 Years	150,687	46.7
Population aged 15-29 Years	86,105	26.7
Population aged 2 Years and Over	301,852	93.5
Population aged 10 Years and Over	216,331	67.0
Population aged 15 Years and Over	169,745	52.6
Population aged 18 Years and Over	147,248	45.6
Population aged 20 Years and Over	133,925	41.5
Population aged 65 Years and over	11,513	3.6

**2: EDUCATION**

<b>2.1: Non School attendance of</b>	<b>Number</b>	<b>Percent</b>
Persons aged 6-15 years not attending school	6,351	6.7
Males aged 6-15 years not attending school	3,679	7.5
Females aged 6-15 years not attending school	2,672	5.9
<b>2.2: Persons attending Primary school</b>	<b>Number</b>	<b>Percent</b>
Persons aged 6-12 years attending primary school	57,199	83.7
Males aged 6-12 years attending primary school	29,532	82.7
Females aged 6-12 years attending primary school	27,667	84.8
<b>2.3: Persons attending Secondary school</b>	<b>Number</b>	<b>Percent</b>
Persons aged 13-18 years attending secondary school	18,408	37.6
Males aged 13-18 years attending secondary school	8,682	34.4
Females aged 13-18 years attending secondary school	9,726	41.1
<b>2.4: Persons not in School and Highest Level Completed is below S.4</b>	<b>Number</b>	<b>Percent</b>
Persons aged 15 years and above whose highest level of education completed is below S.4	102,236	80.6
Males aged 15 years and above whose highest level of education completed is below S.4	49,339	79.4
Females aged 15 years and above whose highest level of education completed is below S.4	52,897	81.8
<b>2.5: Persons not in School and Highest Level Completed is "O" Level</b>	<b>Number</b>	<b>Percent</b>
Persons aged 18 years and above whose highest level of education completed is "O" level (S.4)	12,583	8.5
Males aged 18 years and above whose highest level of education completed is "O" level (S.4)	6,322	9.0
Females aged 18 years and above whose highest level of education completed is "O" level (S.4)	6,261	8.2
<b>2.6: Persons not in School and Highest Level Completed is "A" Level</b>	<b>Number</b>	<b>Percent</b>
Persons aged 20 years and above whose highest level of education completed is "A" level (S.6)	3,536	2.6
Males aged 20 years and above whose highest level of education completed is "A" level (S.6)	2,246	3.5
Females aged 20 years and above whose highest level of education completed is "A" level (S.6)	1,290	1.8

**3: ILLITERACY STATUS**

<b>3.1: Persons aged 18 years and above</b>	<b>Number</b>	<b>Percent</b>
Persons aged 18 years and above who are illiterate	30,251	20.5
Males aged 18 years and above who are illiterate	12,447	17.6
Females aged 18 years and above who are illiterate	17,804	23.2
<b>3.2: Other age groups</b>	<b>Number</b>	<b>Percent</b>
Persons aged 10-17 years who are illiterate	10,374	15.0
Persons aged 18-30 years who are illiterate	8,076	11.7
Persons aged 60 years and above who are illiterate	8,358	50.4

**4: OWNERSHIP OF A BIRTH CERTIFICATE**

<b>4.1: Children with Birth Certificates</b>	<b>Number</b>	<b>Percent</b>
Children less than 1 year who have a Birth Certificate	2,503	23.4
Children less than 5 years who have a Birth Certificate	13,215	23.8
Children 0-8 years who have a Birth Certificate	22,476	23.1
Children 0-17 years who have a Birth Certificate	37,877	22.5

**5: PARENTAL SURVIVAL AND ORPHANHOOD**

<b>5.1: Children 0-8 years</b>	<b>Number</b>	<b>Percent</b>
Children 0-8 years who have lost one parent	3,576	3.7
Children 0-8 years who have lost both parents	395	0.4
Children 0-8 years who have lost at least a parent (total number of orphans)	3,971	4.1
Children 0-8 years who have both parents	93,380	95.9
<b>5.2: All children (0-17 years)</b>	<b>Number</b>	<b>Percent</b>
Children 0-17 years who have lost one parent	14,133	8.0
Children 0-17 years who have lost both parents	2,382	1.4
Children 0-17 years who have lost at least a parent (total number of orphans)	16,515	9.4
Children 0-17 years who have both parents	159,219	90.6

**6: DISABILITY**

<b>6.1: Persons with a disability</b>	<b>Number</b>	<b>Percent</b>
Persons aged 2 years and above with a disability	37,347	12.4
Persons aged 2 years and above with a seeing disability	20,802	6.9
Persons aged 2 years and above with a hearing disability	9,305	3.1
Persons aged 2 years and above with a walking disability	16,685	5.5
Persons aged 2 years and above with a remembering disability	16,077	5.3
Persons aged 2 years and above with multiple disabilities	34,904	37.2
Children aged 2-17 years with a disability	6,151	4.0
Youth aged 18-30 years with a disability	4,870	7.0
Older persons aged 60 years and above with a disability	11,175	67.4

**7: MARRIAGE AND CHILDBEARING**

<b>7.1: Marital status of the population</b>	<b>Number</b>	<b>Percent</b>
Persons aged 10 years and above who are married	47,065	42.8
Persons aged 18 years and above who are married	45,056	58.7
Females aged 50 years and above who are widowed	7,511	44.2
Females aged 10-17 years who have ever been married	2,280	6.9
Females aged 10-19 years who have ever been married	5,312	13.3
<b>7.2: Females who have had a birth</b>	<b>Number</b>	<b>Percent</b>
Females aged 12-17 years who have given birth	2,139	8.7
Females aged 12-19 years who have given birth	4,897	15.6

**8: WORKING STATUS**

<b>8.1: Working persons</b>	<b>Number</b>	<b>Percent</b>
Persons aged 10-15 years who were working	18,674	34.5
Persons aged 10-17 years who were working	26,263	38.0
Persons aged 18-30 years who were working	56,425	81.5
Persons aged 16-64 years who were working	126,353	83.9
Persons aged 18 years and above who were working	126,324	85.8
Persons aged 60 years and above who were working	12,111	73.1
<b>8.2: Youths Not working and not in school</b>		
Youths (Persons aged 18-30 years) who were neither working nor in school	5,510	8.0



**9: USE OF ICT**

<b>9.1: Mobile phone ownership (10 years and above)</b>	<b>Number</b>	<b>Percent</b>
Persons aged 10 years and above that own at least one mobile phone	104,569	48.3
Males aged 10 years and above that own at least one mobile phone	54,729	51.4
Females aged 10 years and above that own at least one mobile phone	49,840	45.3
<b>9.2: Mobile phone ownership (18-30 years)</b>	<b>Number</b>	<b>Percent</b>
Persons aged 18-30 years and above that own at least one mobile phone	45,890	66.3
Males aged 18-30 years and above that own at least one mobile phone	24,307	72.8
Females aged 18-30 years and above that own at least one mobile phone	21,583	60.2
<b>9.3: Internet Usage (10 years and above)</b>	<b>Number</b>	<b>Percent</b>
Persons aged 10 years and above that use internet	12,048	5.6
Males aged 10 years and above that use internet	7,472	7.0
Females aged 10 years and above that use internet	4,576	4.2
<b>9.4: Internet Usage (18-30 years)</b>	<b>Number</b>	<b>Percent</b>
Persons aged 18-30 years that use internet	6,857	9.9
Males aged 18-30 years that use internet	4,287	12.8
Females aged 18-30 years that use internet	2,570	7.2

**10: HOUSING CONDITIONS**

<b>10.1: Construction Materials For the Dwelling Units</b>	<b>Number</b>	<b>Percent</b>
Households living in dwelling units constructed using permanent roof materials	77,450	97.2
Households living in dwelling units constructed using permanent wall materials	54,440	68.3
Households living in dwelling units constructed using permanent floor materials	38,255	48.0
<b>10.2: Status of Dwelling Units</b>	<b>Number</b>	<b>Percent</b>
Households living in semi-permanent dwelling units	41,152	51.7
Households living in temporary dwelling units	2,068	2.6

**11: ACCESS TO COMMUNITY SERVICES**

<b>11.1: Access to a Primary school</b>	<b>Number</b>	<b>Percent</b>
Households that are 5 km or more to the nearest primary school, <u>whether public or private</u>	3,223	4.0
Households that are 5 km or more to the nearest <u>public</u> primary school	7,089	8.9
<b>11.2: Access to a Secondary school</b>	<b>Number</b>	<b>Percent</b>
Households that are 5 km or more to the nearest secondary school, <u>whether public or private</u>	17,520	22.0
Households that are 5 km or more to the nearest <u>public</u> secondary school	36,887	46.3
<b>11.3: Access to a Health Facility</b>	<b>Number</b>	<b>Percent</b>
Households that are 5 km or more to the nearest health facility, <u>whether public or private</u>	12,719	16.0
Households that are 5 km or more to the nearest <u>public</u> health facility	22,633	28.4
<b>11.4: Access to a Police post /Police station</b>	<b>Number</b>	<b>Percent</b>
Households that are 5 km or more to the nearest Police Post/Police Station	27,525	34.6

**12: HOUSEHOLD HEALTH AND HYGIENE**

<b>12.1: Ownership of Mosquito nets</b>	<b>Number</b>	<b>Percent</b>
Households that own at least a mosquito net	70,995	89.1
Households that own at least a mosquito net that was received free (Government /NGO)	67,182	94.6
<b>12.2: Source Of Water For Drinking</b>	<b>Number</b>	<b>Percent</b>
Households that have access to piped water	10,613	13.3
Households that use a bore hole	17,770	22.3
<b>12.3: Ownership of a Toilet facility</b>	<b>Number</b>	<b>Percent</b>
Households without any toilet facility	2,190	2.7
<b>12.4: Other environmental conditions</b>	<b>Number</b>	<b>Percent</b>
Households that <u>properly</u> dispose off solid waste	26,798	33.6
Households which are not living in decent dwellings	75,882	95.3

**13: HOUSEHOLD ASSETS**

<b>13.1: Owner occupied Dwellings</b>	<b>Number</b>	<b>Percent</b>
Households that are owner occupied	50,522	63.4
Male headed households that are owner occupied	35,355	62.3
Female headed households that are owner occupied	15,167	66.2
<b>13.2: Movable Assets</b>	<b>Number</b>	<b>Percent</b>
Households that own a television	11,228	14.1
Households that own a computer	1,650	2.1
Households that own a bicycle	20,218	25.4
Households that own a radio	57,313	71.9

**14: OTHER HOUSEHOLD CHARACTERISTICS**

<b>14.1: Main source of information</b>	<b>Number</b>	<b>Percent</b>
Households whose main source of information is a radio	53,817	67.6
Households whose main source of information is a community announcer	2,432	3.1
Households whose main source of information is a telephone	4,608	5.8
<b>14.2: Household Economy and Welfare</b>	<b>Number</b>	<b>Percent</b>
Households that received remittances from abroad in the last 12 months	15,600	19.6
Households where any member possesses a bank account	15,158	19.0
Households that depend on subsistence farming as a main source of livelihood	50,334	63.2
Households with at least one member engaged in a non-agricultural household based enterprise	43,292	89.7
Households where (members aged 5 years and above) consume less than two meals in a day	9,489	11.9
<b>14.3: Source of Energy for lighting</b>	<b>Number</b>	<b>Percent</b>
Households that have access to electricity	18,291	23.0
Households that use Tadooba for lighting	45,914	57.6

**15: HOUSEHOLD BASED AGRICULTURAL ACTIVITIES**

<b>15.1: Household based Agricultural activities</b>	<b>Number</b>	<b>Percent</b>
Households engaged in crop growing	62,753	78.8
Households engaged in maize growing	50,080	62.9
Households engaged in coffee growing	14,470	18.2
Households engaged in growing of beans	50,717	63.7
Households engaged in growing of millet	229	0.3
Households engaged in growing of sweet potatoes	26,062	32.7
Households engaged in growing of matooke	21,560	27.1
Households engaged livestock farming	45,023	56.5
Households engaged in either crop growing or livestock farming	65,645	82.4

## MITYANA MUNICIPALITY CONSTITUENCY

### LIST OF TABLES

- 1 Population
- 2 Education
- 3 Illiteracy status
- 4 Ownership of a Birth Certificate
- 5 Parental Survival and Orphanhood
- 6 Disability
- 7 Marriage and Child Bearing
- 8 Working Status
- 9 Use of ICT
- 10 Housing Conditions
- 11 Access to Community Services
- 12 Household Health and Hygiene
- 13 Household Assets
- 14 Other Household Characteristics
- 15 Household Based Agricultural Activities

**1: POPULATION**

<b>1.1: Population Size</b>	<b>Number</b>	<b>Percent</b>
Total population	95,428	
Total male population	46,052	48.3
Total female population	49,376	51.7
Sex ratio (males per 100 females)	93.3	
<b>1.2: Households</b>	<b>Number</b>	<b>Percent</b>
Total households	24,042	
Households headed by males	16,356	68.0
Households headed by females	7,686	32.0
Households headed by children (aged 10-17 years)	199	0.8
Households headed by youth (aged 18-30 years)	7,955	33.1
Households headed by older persons (aged 60 years and above)	3,232	13.4
<b>1.3: Population by Age groups</b>	<b>Number</b>	<b>Percent</b>
Population aged 0-17 years	48,433	52.4
Population aged 18-30 years	22,348	24.2
Population aged 31-59 years	17,684	19.1
Population aged 60 years and over	3,929	4.3
<b>1.4: Population by Special Age groups</b>	<b>Number</b>	<b>Percent</b>
Population aged Less than one Year	3,130	3.4
Population aged 0-4 Years	15,881	17.2
Population aged 0-8 Years	27,227	29.5
Population aged 2-8 Years	21,104	22.8
Population aged 2-17 Years	42,310	45.8
Population aged 6-12 Years	18,247	19.7
Population aged 6-15 Years	25,352	27.4
Population aged 10-15 Years	14,406	15.6
Population aged 10-17 Years	18,732	20.3
Population aged 15-24 Years	19,702	21.3
Population aged 16-64 Years	45,554	49.3
Population aged 15-29 Years	26,907	29.1
Population aged 2 Years and Over	86,271	93.4
Population aged 10 Years and Over	62,693	67.9
Population aged 15 Years and Over	50,337	54.5
Population aged 18 Years and Over	43,961	47.6
Population aged 20 Years and Over	39,850	43.1
Population aged 65 Years and over	2,733	3.0

**2: EDUCATION**

<b>2.1: Non School attendance of</b>	<b>Number</b>	<b>Percent</b>
Persons aged 6-15 years not attending school	1,333	5.3
Males aged 6-15 years not attending school	717	5.6
Females aged 6-15 years not attending school	616	4.9
<b>2.2: Persons attending Primary school</b>	<b>Number</b>	<b>Percent</b>
Persons aged 6-12 years attending primary school	15,553	85.2
Males aged 6-12 years attending primary school	7,870	83.9
Females aged 6-12 years attending primary school	7,683	86.7
<b>2.3: Persons attending Secondary school</b>	<b>Number</b>	<b>Percent</b>
Persons aged 13-18 years attending secondary school	6,564	47.6
Males aged 13-18 years attending secondary school	3,000	45.2
Females aged 13-18 years attending secondary school	3,564	49.8
<b>2.4: Persons not in School and Highest Level Completed is below S.4</b>	<b>Number</b>	<b>Percent</b>
Persons aged 15 years and above whose highest level of education completed is below S.4	26,365	68.6
Males aged 15 years and above whose highest level of education completed is below S.4	11,276	65.6
Females aged 15 years and above whose highest level of education completed is below S.4	15,089	71.1
<b>2.5: Persons not in School and Highest Level Completed is "O" Level</b>	<b>Number</b>	<b>Percent</b>
Persons aged 18 years and above whose highest level of education completed is "O" level (S.4)	5,569	12.7
Males aged 18 years and above whose highest level of education completed is "O" level (S.4)	2,612	13.3
Females aged 18 years and above whose highest level of education completed is "O" level (S.4)	2,957	12.2
<b>2.6: Persons not in School and Highest Level Completed is "A" Level</b>	<b>Number</b>	<b>Percent</b>
Persons aged 20 years and above whose highest level of education completed is "A" level (S.6)	1,819	4.6
Males aged 20 years and above whose highest level of education completed is "A" level (S.6)	1,092	6.1
Females aged 20 years and above whose highest level of education completed is "A" level (S.6)	727	3.3

**3: ILLITERACY STATUS**

<b>3.1: Persons aged 18 years and above</b>	<b>Number</b>	<b>Percent</b>
Persons aged 18 years and above who are illiterate	5,605	12.7
Males aged 18 years and above who are illiterate	2,135	10.8
Females aged 18 years and above who are illiterate	3,470	14.3
<b>3.2: Other age groups</b>	<b>Number</b>	<b>Percent</b>
Persons aged 10-17 years who are illiterate	2,041	10.9
Persons aged 18-30 years who are illiterate	1,557	7.0
Persons aged 60 years and above who are illiterate	1,559	39.7

**4: OWNERSHIP OF A BIRTH CERTIFICATE**

<b>4.1: Children with Birth Certificates</b>	<b>Number</b>	<b>Percent</b>
Children less than 1 year who have a Birth Certificate	861	27.5
Children less than 5 years who have a Birth Certificate	4,659	29.3
Children 0-8 years who have a Birth Certificate	7,886	29.0
Children 0-17 years who have a Birth Certificate	13,176	28.5

**5: PARENTAL SURVIVAL AND ORPHANHOOD**

<b>5.1: Children 0-8 years</b>	<b>Number</b>	<b>Percent</b>
Children 0-8 years who have lost one parent	921	3.4
Children 0-8 years who have lost both parents	109	0.4
Children 0-8 years who have lost at least a parent (total number of orphans)	1,030	3.8
Children 0-8 years who have both parents	26,197	96.2
<b>5.2: All children (0-17 years)</b>	<b>Number</b>	<b>Percent</b>
Children 0-17 years who have lost one parent	3,597	7.4
Children 0-17 years who have lost both parents	654	1.4
Children 0-17 years who have lost at least a parent (total number of orphans)	4,251	8.8
Children 0-17 years who have both parents	44,182	91.2

**6: DISABILITY**

<b>6.1: Persons with a disability</b>	<b>Number</b>	<b>Percent</b>
Persons aged 2 years and above with a disability	8,243	9.6
Persons aged 2 years and above with a seeing disability	4,759	5.5
Persons aged 2 years and above with a hearing disability	1,829	2.1
Persons aged 2 years and above with a walking disability	3,466	4.0
Persons aged 2 years and above with a remembering disability	3,031	3.5
Persons aged 2 years and above with multiple disabilities	7,818	33.9
Children aged 2-17 years with a disability	1,364	3.2
Youth aged 18-30 years with a disability	1,177	5.3
Older persons aged 60 years and above with a disability	2,381	60.6

**7: MARRIAGE AND CHILDBEARING**

<b>7.1: Marital status of the population</b>	<b>Number</b>	<b>Percent</b>
Persons aged 10 years and above who are married	14,631	43.3
Persons aged 18 years and above who are married	13,909	57.3
Females aged 50 years and above who are widowed	1,901	43.3
Females aged 10-17 years who have ever been married	821	8.6
Females aged 10-19 years who have ever been married	1,715	14.5
<b>7.2: Females who have had a birth</b>	<b>Number</b>	<b>Percent</b>
Females aged 12-17 years who have given birth	745	10.4
Females aged 12-19 years who have given birth	1,600	17.0

**8: WORKING STATUS**

<b>8.1: Working persons</b>	<b>Number</b>	<b>Percent</b>
Persons aged 10-15 years who were working	2,294	15.9
Persons aged 10-17 years who were working	3,716	19.8
Persons aged 18-30 years who were working	15,522	69.5
Persons aged 16-64 years who were working	33,582	73.7
Persons aged 18 years and above who were working	33,714	76.7
Persons aged 60 years and above who were working	2,552	65.0
<b>8.2: Youths Not working and not in school</b>		
Youths (Persons aged 18-30 years) who were neither working nor in school	3,256	14.6



**9: USE OF ICT**

<b>9.1: Mobile phone ownership (10 years and above)</b>	<b>Number</b>	<b>Percent</b>
Persons aged 10 years and above that own at least one mobile phone	36,812	58.7
Males aged 10 years and above that own at least one mobile phone	17,564	60.8
Females aged 10 years and above that own at least one mobile phone	19,248	56.9
<b>9.2: Mobile phone ownership (18-30 years)</b>	<b>Number</b>	<b>Percent</b>
Persons aged 18-30 years and above that own at least one mobile phone	17,188	76.9
Males aged 18-30 years and above that own at least one mobile phone	8,014	81.4
Females aged 18-30 years and above that own at least one mobile phone	9,174	73.4
<b>9.3: Internet Usage (10 years and above)</b>	<b>Number</b>	<b>Percent</b>
Persons aged 10 years and above that use internet	6,248	10.0
Males aged 10 years and above that use internet	3,625	12.6
Females aged 10 years and above that use internet	2,623	7.8
<b>9.4: Internet Usage (18-30 years)</b>	<b>Number</b>	<b>Percent</b>
Persons aged 18-30 years that use internet	3,532	15.8
Males aged 18-30 years that use internet	2,015	20.5
Females aged 18-30 years that use internet	1,517	12.1

**10: HOUSING CONDITIONS**

<b>10.1: Construction Materials For the Dwelling Units</b>	<b>Number</b>	<b>Percent</b>
Households living in dwelling units constructed using permanent roof materials	23,912	99.5
Households living in dwelling units constructed using permanent wall materials	20,935	87.1
Households living in dwelling units constructed using permanent floor materials	17,701	73.6
<b>10.2: Status of Dwelling Units</b>	<b>Number</b>	<b>Percent</b>
Households living in semi-permanent dwelling units	6,683	27.8
Households living in temporary dwelling units	107	0.4

**11: ACCESS TO COMMUNITY SERVICES**

<b>11.1: Access to a Primary school</b>	<b>Number</b>	<b>Percent</b>
Households that are 5 km or more to the nearest primary school, <u>whether public or private</u>	452	1.9
Households that are 5 km or more to the nearest <u>public</u> primary school	1,427	5.9
<b>11.2: Access to a Secondary school</b>	<b>Number</b>	<b>Percent</b>
Households that are 5 km or more to the nearest secondary school, <u>whether public or private</u>	2,045	8.5
Households that are 5 km or more to the nearest <u>public</u> secondary school	6,637	27.6
<b>11.3: Access to a Health Facility</b>	<b>Number</b>	<b>Percent</b>
Households that are 5 km or more to the nearest health facility, <u>whether public or private</u>	1,980	8.2
Households that are 5 km or more to the nearest <u>public</u> health facility	3,856	16.0
<b>11.4: Access to a Police post /Police station</b>	<b>Number</b>	<b>Percent</b>
Households that are 5 km or more to the nearest Police Post/Police Station	5,453	22.7

**12: HOUSEHOLD HEALTH AND HYGIENE**

<b>12.1:Ownership of Mosquito nets</b>	<b>Number</b>	<b>Percent</b>
Households that own at least a mosquito net	21,037	87.5
Households that own at least a mosquito net that was received free (Government /NGO)	18,767	89.2
<b>12.2: Source Of Water For Drinking</b>	<b>Number</b>	<b>Percent</b>
Households that have access to piped water	8,891	37.0
Households that use a bore hole	2,824	11.7
<b>12.3:Ownership of a Toilet facility</b>	<b>Number</b>	<b>Percent</b>
Households without any toilet facility	267	1.1
<b>12.4: Other environmental conditions</b>	<b>Number</b>	<b>Percent</b>
Households that <u>properly</u> dispose off solid waste	12,473	51.9
Households which are not living in decent dwellings	21,804	90.7

**13: HOUSEHOLD ASSETS**

<b>13.1: Owner occupied Dwellings</b>	<b>Number</b>	<b>Percent</b>
Households that are owner occupied	12,117	50.4
Male headed households that are owner occupied	8,106	49.6
Female headed households that are owner occupied	4,011	52.2
<b>13.2: Movable Assets</b>	<b>Number</b>	<b>Percent</b>
Households that own a television	7,103	29.5
Households that own a computer	1,028	4.3
Households that own a bicycle	5,054	21.0
Households that own a radio	17,067	71.0

**14: OTHER HOUSEHOLD CHARACTERISTICS**

<b>14.1: Main source of information</b>	<b>Number</b>	<b>Percent</b>
Households whose main source of information is a radio	14,803	61.6
Households whose main source of information is a community announcer	377	1.6
Households whose main source of information is a telephone	1,996	8.3
<b>14.2: Household Economy and Welfare</b>	<b>Number</b>	<b>Percent</b>
Households that received remittances from abroad in the last 12 months	5,548	23.1
Households where any member possesses a bank account	7,695	32.0
Households that depend on subsistence farming as a main source of livelihood	9,188	38.2
Households with at least one member engaged in a non-agricultural household based enterprise	16,904	90.0
Households where (members aged 5 years and above) consume less than two meals in a day	3,265	13.6
<b>14.3: Source of Energy for lighting</b>	<b>Number</b>	<b>Percent</b>
Households that have access to electricity	10,424	43.4
Households that use Tadooba for lighting	8,522	35.4

**15: HOUSEHOLD BASED AGRICULTURAL ACTIVITIES**

<b>15.1: Household based Agricultural activities</b>	<b>Number</b>	<b>Percent</b>
Households engaged in crop growing	14,019	58.3
Households engaged in maize growing	10,364	43.1
Households engaged in coffee growing	2,507	10.4
Households engaged in growing of beans	10,719	44.6
Households engaged in growing of millet	35	0.1
Households engaged in growing of sweet potatoes	6,027	25.1
Households engaged in growing of matooke	5,335	22.2
Households engaged livestock farming	10,712	44.6
Households engaged in either crop growing or livestock farming	15,720	65.4

## **BUSUJJU COUNTY CONSTITUENCY**

### **LIST OF TABLES**

- |    |   |
|----|---|
| 1  | Population                              |
| 2  | Education                               |
| 3  | Illiteracy status                       |
| 4  | Ownership of a Birth Certificate        |
| 5  | Parental Survival and Orphanhood        |
| 6  | Disability                              |
| 7  | Marriage and Child Bearing              |
| 8  | Working Status                          |
| 9  | Use of ICT                              |
| 10 | Housing Conditions                      |
| 11 | Access to Community Services            |
| 12 | Household Health and Hygiene            |
| 13 | Household Assets                        |
| 14 | Other Household Characteristics         |
| 15 | Household Based Agricultural Activities |

**1: POPULATION**

<b>1.1: Population Size</b>	<b>Number</b>	<b>Percent</b>
Total population	88,348	
Total male population	45,106	51.1
Total female population	43,242	48.9
Sex ratio (males per 100 females)	104.3	
<b>1.2: Households</b>	<b>Number</b>	<b>Percent</b>
Total households	20,842	
Households headed by males	14,799	71.0
Households headed by females	6,043	29.0
Households headed by children (aged 10-17 years)	129	0.6
Households headed by youth (aged 18-30 years)	5,178	24.8
Households headed by older persons (aged 60 years and above)	4,226	20.3
<b>1.3: Population by Age groups</b>	<b>Number</b>	<b>Percent</b>
Population aged 0-17 years	48,573	55.8
Population aged 18-30 years	16,637	19.1
Population aged 31-59 years	16,760	19.3
Population aged 60 years and over	5,093	5.8
<b>1.4: Population by Special Age groups</b>	<b>Number</b>	<b>Percent</b>
Population aged Less than one Year	2,837	3.3
Population aged 0-4 Years	14,879	17.1
Population aged 0-8 Years	26,349	30.3
Population aged 2-8 Years	20,761	23.8
Population aged 2-17 Years	42,985	49.4
Population aged 6-12 Years	19,091	21.9
Population aged 6-15 Years	26,662	30.6
Population aged 10-15 Years	15,468	17.8
Population aged 10-17 Years	19,585	22.5
Population aged 15-24 Years	16,457	18.9
Population aged 16-64 Years	39,039	44.8
Population aged 15-29 Years	21,591	24.8
Population aged 2 Years and Over	81,475	93.6
Population aged 10 Years and Over	58,075	66.7
Population aged 15 Years and Over	44,790	51.4
Population aged 18 Years and Over	38,490	44.2
Population aged 20 Years and Over	35,132	40.4
Population aged 65 Years and over	3,568	4.1

**2: EDUCATION**

<b>2.1: Non School attendance of</b>	<b>Number</b>	<b>Percent</b>
Persons aged 6-15 years not attending school	1,932	7.2
Males aged 6-15 years not attending school	1,150	8.2
Females aged 6-15 years not attending school	782	6.2
<b>2.2: Persons attending Primary school</b>	<b>Number</b>	<b>Percent</b>
Persons aged 6-12 years attending primary school	15,773	82.6
Males aged 6-12 years attending primary school	8,235	81.8
Females aged 6-12 years attending primary school	7,538	83.6
<b>2.3: Persons attending Secondary school</b>	<b>Number</b>	<b>Percent</b>
Persons aged 13-18 years attending secondary school	4,446	32.7
Males aged 13-18 years attending secondary school	2,105	29.2
Females aged 13-18 years attending secondary school	2,341	36.5
<b>2.4: Persons not in School and Highest Level Completed is below S.4</b>	<b>Number</b>	<b>Percent</b>
Persons aged 15 years and above whose highest level of education completed is below S.4	28,310	85.6
Males aged 15 years and above whose highest level of education completed is below S.4	13,971	84.6
Females aged 15 years and above whose highest level of education completed is below S.4	14,339	86.6
<b>2.5: Persons not in School and Highest Level Completed is "O" Level</b>	<b>Number</b>	<b>Percent</b>
Persons aged 18 years and above whose highest level of education completed is "O" level (S.4)	2,564	6.7
Males aged 18 years and above whose highest level of education completed is "O" level (S.4)	1,301	7.0
Females aged 18 years and above whose highest level of education completed is "O" level (S.4)	1,263	6.4
<b>2.6: Persons not in School and Highest Level Completed is "A" Level</b>	<b>Number</b>	<b>Percent</b>
Persons aged 20 years and above whose highest level of education completed is "A" level (S.6)	594	1.7
Males aged 20 years and above whose highest level of education completed is "A" level (S.6)	370	2.2
Females aged 20 years and above whose highest level of education completed is "A" level (S.6)	224	1.2

**3: ILLITERACY STATUS**

<b>3.1: Persons aged 18 years and above</b>	<b>Number</b>	<b>Percent</b>
Persons aged 18 years and above who are illiterate	9,409	24.4
Males aged 18 years and above who are illiterate	3,972	21.3
Females aged 18 years and above who are illiterate	5,437	27.4
<b>3.2: Other age groups</b>	<b>Number</b>	<b>Percent</b>
Persons aged 10-17 years who are illiterate	3,449	17.6
Persons aged 18-30 years who are illiterate	2,316	13.9
Persons aged 60 years and above who are illiterate	2,730	53.6

**4: OWNERSHIP OF A BIRTH CERTIFICATE**

<b>4.1: Children with Birth Certificates</b>	<b>Number</b>	<b>Percent</b>
Children less than 1 year who have a Birth Certificate	564	19.9
Children less than 5 years who have a Birth Certificate	3,192	21.5
Children 0-8 years who have a Birth Certificate	5,557	21.1
Children 0-17 years who have a Birth Certificate	9,716	20.8

**5: PARENTAL SURVIVAL AND ORPHANHOOD**

<b>5.1: Children 0-8 years</b>	<b>Number</b>	<b>Percent</b>
Children 0-8 years who have lost one parent	1,039	3.9
Children 0-8 years who have lost both parents	109	0.4
Children 0-8 years who have lost at least a parent (total number of orphans)	1,148	4.4
Children 0-8 years who have both parents	25,201	95.6
<b>5.2: All children (0-17 years)</b>	<b>Number</b>	<b>Percent</b>
Children 0-17 years who have lost one parent	4,183	8.6
Children 0-17 years who have lost both parents	671	1.4
Children 0-17 years who have lost at least a parent (total number of orphans)	4,854	10.0
Children 0-17 years who have both parents	43,719	90.0



**6: DISABILITY**

<b>6.1: Persons with a disability</b>	<b>Number</b>	<b>Percent</b>
Persons aged 2 years and above with a disability	13,160	16.2
Persons aged 2 years and above with a seeing disability	6,997	8.6
Persons aged 2 years and above with a hearing disability	3,338	4.1
Persons aged 2 years and above with a walking disability	6,274	7.7
Persons aged 2 years and above with a remembering disability	6,413	7.9
Persons aged 2 years and above with multiple disabilities	12,123	40.3
Children aged 2-17 years with a disability	2,241	5.2
Youth aged 18-30 years with a disability	1,751	10.5
Older persons aged 60 years and above with a disability	3,745	73.5

**7: MARRIAGE AND CHILDBEARING**

<b>7.1: Marital status of the population</b>	<b>Number</b>	<b>Percent</b>
Persons aged 10 years and above who are married	12,108	41.7
Persons aged 18 years and above who are married	11,555	58.2
Females aged 50 years and above who are widowed	2,329	45.7
Females aged 10-17 years who have ever been married	624	6.8
Females aged 10-19 years who have ever been married	1,391	12.8
<b>7.2: Females who have had a birth</b>	<b>Number</b>	<b>Percent</b>
Females aged 12-17 years who have given birth	708	10.4
Females aged 12-19 years who have given birth	1,427	16.9

**8: WORKING STATUS**

<b>8.1: Working persons</b>	<b>Number</b>	<b>Percent</b>
Persons aged 10-15 years who were working	7,146	46.2
Persons aged 10-17 years who were working	9,665	49.3
Persons aged 18-30 years who were working	14,571	87.6
Persons aged 16-64 years who were working	34,502	88.4
Persons aged 18 years and above who were working	34,376	89.3
Persons aged 60 years and above who were working	3,775	74.1
<b>8.2: Youths Not working and not in school</b>		
Youths (Persons aged 18-30 years) who were neither working nor in school	845	5.1

**9: USE OF ICT**

<b>9.1: Mobile phone ownership (10 years and above)</b>	<b>Number</b>	<b>Percent</b>
Persons aged 10 years and above that own at least one mobile phone	25,483	43.9
Males aged 10 years and above that own at least one mobile phone	13,637	47.0
Females aged 10 years and above that own at least one mobile phone	11,846	40.8
<b>9.2: Mobile phone ownership (18-30 years)</b>	<b>Number</b>	<b>Percent</b>
Persons aged 18-30 years and above that own at least one mobile phone	10,192	61.3
Males aged 18-30 years and above that own at least one mobile phone	5,621	68.3
Females aged 18-30 years and above that own at least one mobile phone	4,571	54.4
<b>9.3: Internet Usage (10 years and above)</b>	<b>Number</b>	<b>Percent</b>
Persons aged 10 years and above that use internet	2,256	3.9
Males aged 10 years and above that use internet	1,441	5.0
Females aged 10 years and above that use internet	815	2.8
<b>9.4: Internet Usage (18-30 years)</b>	<b>Number</b>	<b>Percent</b>
Persons aged 18-30 years that use internet	1,255	7.5
Males aged 18-30 years that use internet	825	10.0
Females aged 18-30 years that use internet	430	5.1

**10: HOUSING CONDITIONS**

<b>10.1: Construction Materials For the Dwelling Units</b>	<b>Number</b>	<b>Percent</b>
Households living in dwelling units constructed using permanent roof materials	20,364	97.7
Households living in dwelling units constructed using permanent wall materials	12,226	58.7
Households living in dwelling units constructed using permanent floor materials	7,565	36.3
<b>10.2: Status of Dwelling Units</b>	<b>Number</b>	<b>Percent</b>
Households living in semi-permanent dwelling units	13,418	64.4
Households living in temporary dwelling units	433	2.1

**11: ACCESS TO COMMUNITY SERVICES**

<b>11.1: Access to a Primary school</b>	<b>Number</b>	<b>Percent</b>
Households that are 5 km or more to the nearest primary school, <u>whether public or private</u>	680	3.3
Households that are 5 km or more to the nearest <u>public</u> primary school	1,618	7.8
<b>11.2: Access to a Secondary school</b>	<b>Number</b>	<b>Percent</b>
Households that are 5 km or more to the nearest secondary school, <u>whether public or private</u>	5,265	25.3
Households that are 5 km or more to the nearest <u>public</u> secondary school	9,265	44.5
<b>11.3: Access to a Health Facility</b>	<b>Number</b>	<b>Percent</b>
Households that are 5 km or more to the nearest health facility, <u>whether public or private</u>	3,566	17.1
Households that are 5 km or more to the nearest <u>public</u> health facility	8,276	39.7
<b>11.4: Access to a Police post /Police station</b>	<b>Number</b>	<b>Percent</b>
Households that are 5 km or more to the nearest Police Post/Police Station	8,072	38.7

**12: HOUSEHOLD HEALTH AND HYGIENE**

<b>12.1:Ownership of Mosquito nets</b>	<b>Number</b>	<b>Percent</b>
Households that own at least a mosquito net	18,978	91.1
Households that own at least a mosquito net that was received free (Government /NGO)	18,381	96.9
<b>12.2: Source Of Water For Drinking</b>	<b>Number</b>	<b>Percent</b>
Households that have access to piped water	473	2.3
Households that use a bore hole	6,293	30.2
<b>12.3:Ownership of a Toilet facility</b>	<b>Number</b>	<b>Percent</b>
Households without any toilet facility	908	4.4
<b>12.4: Other environmental conditions</b>	<b>Number</b>	<b>Percent</b>
Households that <u>properly</u> dispose off solid waste	4,776	22.9
Households which are not living in decent dwellings	20,222	97.0

**13: HOUSEHOLD ASSETS**

<b>13.1: Owner occupied Dwellings</b>	<b>Number</b>	<b>Percent</b>
Households that are owner occupied	14,596	70.0
Male headed households that are owner occupied	10,146	68.6
Female headed households that are owner occupied	4,450	73.6
<b>13.2: Movable Assets</b>	<b>Number</b>	<b>Percent</b>
Households that own a television	1,747	8.4
Households that own a computer	345	1.7
Households that own a bicycle	5,257	25.2
Households that own a radio	15,006	72.0

**14: OTHER HOUSEHOLD CHARACTERISTICS**

<b>14.1: Main source of information</b>	<b>Number</b>	<b>Percent</b>
Households whose main source of information is a radio	14,296	68.6
Households whose main source of information is a community announcer	995	4.8
Households whose main source of information is a telephone	1,035	5.0
<b>14.2: Household Economy and Welfare</b>	<b>Number</b>	<b>Percent</b>
Households that received remittances from abroad in the last 12 months	3,657	17.5
Households where any member possesses a bank account	2,921	14.0
Households that depend on subsistence farming as a main source of livelihood	15,155	72.7
Households with at least one member engaged in a non-agricultural household based enterprise	12,384	91.3
Households where (members aged 5 years and above) consume less than two meals in a day	2,368	11.4
<b>14.3: Source of Energy for lighting</b>	<b>Number</b>	<b>Percent</b>
Households that have access to electricity	3,312	15.9
Households that use Tadooba for lighting	14,066	67.5

**15: HOUSEHOLD BASED AGRICULTURAL ACTIVITIES**

<b>15.1: Household based Agricultural activities</b>	<b>Number</b>	<b>Percent</b>
Households engaged in crop growing	18,187	87.3
Households engaged in maize growing	13,924	66.8
Households engaged in coffee growing	4,366	20.9
Households engaged in growing of beans	13,108	62.9
Households engaged in growing of millet	54	0.3
Households engaged in growing of sweet potatoes	8,965	43.0
Households engaged in growing of matooke	6,110	29.3
Households engaged livestock farming	13,403	64.3
Households engaged in either crop growing or livestock farming	18,748	90.0

## **MITYANA COUNTY NORTH CONSTITUENCY**

### **LIST OF TABLES**

- |    |   |
|----|---|
| 1  | Population                              |
| 2  | Education                               |
| 3  | Illiteracy status                       |
| 4  | Ownership of a Birth Certificate        |
| 5  | Parental Survival and Orphanhood        |
| 6  | Disability                              |
| 7  | Marriage and Child Bearing              |
| 8  | Working Status                          |
| 9  | Use of ICT                              |
| 10 | Housing Conditions                      |
| 11 | Access to Community Services            |
| 12 | Household Health and Hygiene            |
| 13 | Household Assets                        |
| 14 | Other Household Characteristics         |
| 15 | Household Based Agricultural Activities |

**1: POPULATION**

<b>1.1: Population Size</b>	<b>Number</b>	<b>Percent</b>
Total population	90,356	
Total male population	46,516	51.5
Total female population	43,840	48.5
Sex ratio (males per 100 females)	106.1	
<b>1.2: Households</b>	<b>Number</b>	<b>Percent</b>
Total households	21,604	
Households headed by males	15,854	73.4
Households headed by females	5,750	26.6
Households headed by children (aged 10-17 years)	152	0.7
Households headed by youth (aged 18-30 years)	5,917	27.4
Households headed by older persons (aged 60 years and above)	4,221	19.5
<b>1.3: Population by Age groups</b>	<b>Number</b>	<b>Percent</b>
Population aged 0-17 years	49,168	54.9
Population aged 18-30 years	18,315	20.5
Population aged 31-59 years	16,964	19.0
Population aged 60 years and over	5,043	5.6
<b>1.4: Population by Special Age groups</b>	<b>Number</b>	<b>Percent</b>
Population aged Less than one Year	2,904	3.2
Population aged 0-4 Years	15,317	17.1
Population aged 0-8 Years	27,167	30.4
Population aged 2-8 Years	21,319	23.8
Population aged 2-17 Years	43,320	48.4
Population aged 6-12 Years	19,312	21.6
Population aged 6-15 Years	26,788	29.9
Population aged 10-15 Years	15,270	17.1
Population aged 10-17 Years	19,368	21.6
Population aged 15-24 Years	17,451	19.5
Population aged 16-64 Years	40,917	45.7
Population aged 15-29 Years	23,060	25.8
Population aged 2 Years and Over	83,642	93.5
Population aged 10 Years and Over	59,690	66.7
Population aged 15 Years and Over	46,526	52.0
Population aged 18 Years and Over	40,322	45.1
Population aged 20 Years and Over	36,727	41.0
Population aged 65 Years and over	3,503	3.9

**2: EDUCATION**

<b>2.1: Non School attendance of</b>	<b>Number</b>	<b>Percent</b>
Persons aged 6-15 years not attending school	1,939	7.2
Males aged 6-15 years not attending school	1,118	7.9
Females aged 6-15 years not attending school	821	6.5
<b>2.2: Persons attending Primary school</b>	<b>Number</b>	<b>Percent</b>
Persons aged 6-12 years attending primary school	16,118	83.5
Males aged 6-12 years attending primary school	8,439	82.9
Females aged 6-12 years attending primary school	7,679	84.1
<b>2.3: Persons attending Secondary school</b>	<b>Number</b>	<b>Percent</b>
Persons aged 13-18 years attending secondary school	4,508	33.0
Males aged 13-18 years attending secondary school	2,187	30.1
Females aged 13-18 years attending secondary school	2,321	36.4
<b>2.4: Persons not in School and Highest Level Completed is below S.4</b>	<b>Number</b>	<b>Percent</b>
Persons aged 15 years and above whose highest level of education completed is below S.4	29,790	87.4
Males aged 15 years and above whose highest level of education completed is below S.4	15,209	86.2
Females aged 15 years and above whose highest level of education completed is below S.4	14,581	88.6
<b>2.5: Persons not in School and Highest Level Completed is "O" Level</b>	<b>Number</b>	<b>Percent</b>
Persons aged 18 years and above whose highest level of education completed is "O" level (S.4)	2,547	6.3
Males aged 18 years and above whose highest level of education completed is "O" level (S.4)	1,395	6.9
Females aged 18 years and above whose highest level of education completed is "O" level (S.4)	1,152	5.7
<b>2.6: Persons not in School and Highest Level Completed is "A" Level</b>	<b>Number</b>	<b>Percent</b>
Persons aged 20 years and above whose highest level of education completed is "A" level (S.6)	584	1.6
Males aged 20 years and above whose highest level of education completed is "A" level (S.6)	409	2.2
Females aged 20 years and above whose highest level of education completed is "A" level (S.6)	175	0.9



**3: ILLITERACY STATUS**

<b>3.1: Persons aged 18 years and above</b>	<b>Number</b>	<b>Percent</b>
Persons aged 18 years and above who are illiterate	9,999	24.8
Males aged 18 years and above who are illiterate	4,167	20.7
Females aged 18 years and above who are illiterate	5,832	28.9
<b>3.2: Other age groups</b>	<b>Number</b>	<b>Percent</b>
Persons aged 10-17 years who are illiterate	2,988	15.4
Persons aged 18-30 years who are illiterate	2,688	14.7
Persons aged 60 years and above who are illiterate	2,757	54.7

**4: OWNERSHIP OF A BIRTH CERTIFICATE**

<b>4.1: Children with Birth Certificates</b>	<b>Number</b>	<b>Percent</b>
Children less than 1 year who have a Birth Certificate	677	23.3
Children less than 5 years who have a Birth Certificate	3,469	22.6
Children 0-8 years who have a Birth Certificate	5,850	21.5
Children 0-17 years who have a Birth Certificate	9,828	20.8

**5: PARENTAL SURVIVAL AND ORPHANHOOD**

<b>5.1: Children 0-8 years</b>	<b>Number</b>	<b>Percent</b>
Children 0-8 years who have lost one parent	1,038	3.8
Children 0-8 years who have lost both parents	106	0.4
Children 0-8 years who have lost at least a parent (total number of orphans)	1,144	4.2
Children 0-8 years who have both parents	26,023	95.8
<b>5.2: All children (0-17 years)</b>	<b>Number</b>	<b>Percent</b>
Children 0-17 years who have lost one parent	4,107	8.4
Children 0-17 years who have lost both parents	694	1.4
Children 0-17 years who have lost at least a parent (total number of orphans)	4,801	9.8
Children 0-17 years who have both parents	44,367	90.2

**6: DISABILITY**

<b>6.1: Persons with a disability</b>	<b>Number</b>	<b>Percent</b>
Persons aged 2 years and above with a disability	9,905	11.8
Persons aged 2 years and above with a seeing disability	5,787	6.9
Persons aged 2 years and above with a hearing disability	2,653	3.2
Persons aged 2 years and above with a walking disability	4,360	5.2
Persons aged 2 years and above with a remembering disability	4,137	4.9
Persons aged 2 years and above with multiple disabilities	9,272	37.7
Children aged 2-17 years with a disability	1,451	3.3
Youth aged 18-30 years with a disability	1,126	6.1
Older persons aged 60 years and above with a disability	3,342	66.3

**7: MARRIAGE AND CHILDBEARING**

<b>7.1: Marital status of the population</b>	<b>Number</b>	<b>Percent</b>
Persons aged 10 years and above who are married	12,485	42.6
Persons aged 18 years and above who are married	12,091	59.9
Females aged 50 years and above who are widowed	2,141	43.8
Females aged 10-17 years who have ever been married	451	5.0
Females aged 10-19 years who have ever been married	1,265	11.7
<b>7.2: Females who have had a birth</b>	<b>Number</b>	<b>Percent</b>
Females aged 12-17 years who have given birth	399	6.0
Females aged 12-19 years who have given birth	1,103	13.1

**8: WORKING STATUS**

<b>8.1: Working persons</b>	<b>Number</b>	<b>Percent</b>
Persons aged 10-15 years who were working	7,183	47.0
Persons aged 10-17 years who were working	9,761	50.4
Persons aged 18-30 years who were working	16,653	90.9
Persons aged 16-64 years who were working	37,292	91.1
Persons aged 18 years and above who were working	37,223	92.3
Persons aged 60 years and above who were working	3,966	78.6
<b>8.2: Youths Not working and not in school</b>		
Youths (Persons aged 18-30 years) who were neither working nor in school	506	2.8

**9: USE OF ICT**

<b>9.1: Mobile phone ownership (10 years and above)</b>	<b>Number</b>	<b>Percent</b>
Persons aged 10 years and above that own at least one mobile phone	24,806	41.6
Males aged 10 years and above that own at least one mobile phone	13,957	45.9
Females aged 10 years and above that own at least one mobile phone	10,849	37.1
<b>9.2: Mobile phone ownership (18-30 years)</b>	<b>Number</b>	<b>Percent</b>
Persons aged 18-30 years and above that own at least one mobile phone	10,594	57.8
Males aged 18-30 years and above that own at least one mobile phone	6,268	66.9
Females aged 18-30 years and above that own at least one mobile phone	4,326	48.4
<b>9.3: Internet Usage (10 years and above)</b>	<b>Number</b>	<b>Percent</b>
Persons aged 10 years and above that use internet	1,988	3.3
Males aged 10 years and above that use internet	1,344	4.4
Females aged 10 years and above that use internet	644	2.2
<b>9.4: Internet Usage (18-30 years)</b>	<b>Number</b>	<b>Percent</b>
Persons aged 18-30 years that use internet	1,194	6.5
Males aged 18-30 years that use internet	816	8.7
Females aged 18-30 years that use internet	378	4.2

**10: HOUSING CONDITIONS**

<b>10.1: Construction Materials For the Dwelling Units</b>	<b>Number</b>	<b>Percent</b>
Households living in dwelling units constructed using permanent roof materials	20,370	94.3
Households living in dwelling units constructed using permanent wall materials	12,191	56.4
Households living in dwelling units constructed using permanent floor materials	7,295	33.8
<b>10.2: Status of Dwelling Units</b>	<b>Number</b>	<b>Percent</b>
Households living in semi-permanent dwelling units	13,668	63.3
Households living in temporary dwelling units	1,176	5.4

**11: ACCESS TO COMMUNITY SERVICES**

<b>11.1: Access to a Primary school</b>	<b>Number</b>	<b>Percent</b>
Households that are 5 km or more to the nearest primary school, <u>whether public or private</u>	1,326	6.1
Households that are 5 km or more to the nearest <u>public</u> primary school	2,758	12.8
<b>11.2: Access to a Secondary school</b>	<b>Number</b>	<b>Percent</b>
Households that are 5 km or more to the nearest secondary school, <u>whether public or private</u>	7,428	34.4
Households that are 5 km or more to the nearest <u>public</u> secondary school	14,231	65.9
<b>11.3: Access to a Health Facility</b>	<b>Number</b>	<b>Percent</b>
Households that are 5 km or more to the nearest health facility, <u>whether public or private</u>	4,562	21.1
Households that are 5 km or more to the nearest <u>public</u> health facility	6,678	30.9
<b>11.4: Access to a Police post /Police station</b>	<b>Number</b>	<b>Percent</b>
Households that are 5 km or more to the nearest Police Post/Police Station	9,457	43.8

**12: HOUSEHOLD HEALTH AND HYGIENE**

<b>12.1:Ownership of Mosquito nets</b>	<b>Number</b>	<b>Percent</b>
Households that own at least a mosquito net	19,642	90.9
Households that own at least a mosquito net that was received free (Government /NGO)	19,224	97.9
<b>12.2: Source Of Water For Drinking</b>	<b>Number</b>	<b>Percent</b>
Households that have access to piped water	758	3.5
Households that use a bore hole	5,078	23.5
<b>12.3:Ownership of a Toilet facility</b>	<b>Number</b>	<b>Percent</b>
Households without any toilet facility	629	2.9
<b>12.4: Other environmental conditions</b>	<b>Number</b>	<b>Percent</b>
Households that <u>properly</u> dispose off solid waste	5,081	23.5
Households which are not living in decent dwellings	21,036	97.4

**13: HOUSEHOLD ASSETS**

<b>13.1: Owner occupied Dwellings</b>	<b>Number</b>	<b>Percent</b>
Households that are owner occupied	15,489	71.7
Male headed households that are owner occupied	11,117	70.1
Female headed households that are owner occupied	4,372	76.0
<b>13.2: Movable Assets</b>	<b>Number</b>	<b>Percent</b>
Households that own a television	1,126	5.2
Households that own a computer	153	0.7
Households that own a bicycle	6,442	29.8
Households that own a radio	15,718	72.8

**14: OTHER HOUSEHOLD CHARACTERISTICS**

<b>14.1: Main source of information</b>	<b>Number</b>	<b>Percent</b>
Households whose main source of information is a radio	15,492	71.7
Households whose main source of information is a community announcer	430	2.0
Households whose main source of information is a telephone	998	4.6
<b>14.2: Household Economy and Welfare</b>	<b>Number</b>	<b>Percent</b>
Households that received remittances from abroad in the last 12 months	4,286	19.8
Households where any member possesses a bank account	2,602	12.0
Households that depend on subsistence farming as a main source of livelihood	16,929	78.4
Households with at least one member engaged in a non-agricultural household based enterprise	6,884	86.2
Households where (members aged 5 years and above) consume less than two meals in a day	2,163	10.0
<b>14.3: Source of Energy for lighting</b>	<b>Number</b>	<b>Percent</b>
Households that have access to electricity	2,531	11.7
Households that use Tadooba for lighting	15,269	70.7

**15: HOUSEHOLD BASED AGRICULTURAL ACTIVITIES**

<b>15.1: Household based Agricultural activities</b>	<b>Number</b>	<b>Percent</b>
Households engaged in crop growing	19,464	90.1
Households engaged in maize growing	16,469	76.2
Households engaged in coffee growing	5,334	24.7
Households engaged in growing of beans	17,438	80.7
Households engaged in growing of millet	93	0.4
Households engaged in growing of sweet potatoes	6,660	30.8
Households engaged in growing of matooke	6,439	29.8
Households engaged livestock farming	13,497	62.5
Households engaged in either crop growing or livestock farming	19,765	91.5

## **MITYANA COUNTY SOUTH CONSTITUENCY**

### **LIST OF TABLES**

- |    |   |
|----|---|
| 1  | Population                              |
| 2  | Education                               |
| 3  | Illiteracy status                       |
| 4  | Ownership of a Birth Certificate        |
| 5  | Parental Survival and Orphanhood        |
| 6  | Disability                              |
| 7  | Marriage and Child Bearing              |
| 8  | Working Status                          |
| 9  | Use of ICT                              |
| 10 | Housing Conditions                      |
| 11 | Access to Community Services            |
| 12 | Household Health and Hygiene            |
| 13 | Household Assets                        |
| 14 | Other Household Characteristics         |
| 15 | Household Based Agricultural Activities |

**1: POPULATION**

<b>1.1: Population Size</b>	<b>Number</b>	<b>Percent</b>
Total population	54,832	
Total male population	28,043	51.1
Total female population	26,789	48.9
Sex ratio (males per 100 females)	104.7	
<b>1.2: Households</b>	<b>Number</b>	<b>Percent</b>
Total households	13,177	
Households headed by males	9,751	74.0
Households headed by females	3,426	26.0
Households headed by children (aged 10-17 years)	103	0.8
Households headed by youth (aged 18-30 years)	4,001	30.4
Households headed by older persons (aged 60 years and above)	2,115	16.1
<b>1.3: Population by Age groups</b>	<b>Number</b>	<b>Percent</b>
Population aged 0-17 years	29,560	54.7
Population aged 18-30 years	11,900	22.0
Population aged 31-59 years	10,066	18.6
Population aged 60 years and over	2,509	4.6
<b>1.4: Population by Special Age groups</b>	<b>Number</b>	<b>Percent</b>
Population aged Less than one Year	1,840	3.4
Population aged 0-4 Years	9,475	17.5
Population aged 0-8 Years	16,608	30.7
Population aged 2-8 Years	13,037	24.1
Population aged 2-17 Years	25,989	48.1
Population aged 6-12 Years	11,658	21.6
Population aged 6-15 Years	15,909	29.4
Population aged 10-15 Years	8,987	16.6
Population aged 10-17 Years	11,398	21.1
Population aged 15-24 Years	10,830	20.0
Population aged 16-64 Years	25,177	46.6
Population aged 15-29 Years	14,547	26.9
Population aged 2 Years and Over	50,464	93.4
Population aged 10 Years and Over	35,873	66.4
Population aged 15 Years and Over	28,092	52.0
Population aged 18 Years and Over	24,475	45.3
Population aged 20 Years and Over	22,216	41.1
Population aged 65 Years and over	1,709	3.2



**2: EDUCATION**

<b>2.1: Non School attendance of</b>	<b>Number</b>	<b>Percent</b>
Persons aged 6-15 years not attending school	1,147	7.2
Males aged 6-15 years not attending school	694	8.4
Females aged 6-15 years not attending school	453	5.9
<b>2.2: Persons attending Primary school</b>	<b>Number</b>	<b>Percent</b>
Persons aged 6-12 years attending primary school	9,755	83.7
Males aged 6-12 years attending primary school	4,988	82.4
Females aged 6-12 years attending primary school	4,767	85.1
<b>2.3: Persons attending Secondary school</b>	<b>Number</b>	<b>Percent</b>
Persons aged 13-18 years attending secondary school	2,890	36.6
Males aged 13-18 years attending secondary school	1,390	33.4
Females aged 13-18 years attending secondary school	1,500	40.2
<b>2.4: Persons not in School and Highest Level Completed is below S.4</b>	<b>Number</b>	<b>Percent</b>
Persons aged 15 years and above whose highest level of education completed is below S.4	17,771	83.9
Males aged 15 years and above whose highest level of education completed is below S.4	8,883	82.5
Females aged 15 years and above whose highest level of education completed is below S.4	8,888	85.4
<b>2.5: Persons not in School and Highest Level Completed is "O" Level</b>	<b>Number</b>	<b>Percent</b>
Persons aged 18 years and above whose highest level of education completed is "O" level (S.4)	1,903	7.8
Males aged 18 years and above whose highest level of education completed is "O" level (S.4)	1,014	8.4
Females aged 18 years and above whose highest level of education completed is "O" level (S.4)	889	7.2
<b>2.6: Persons not in School and Highest Level Completed is "A" Level</b>	<b>Number</b>	<b>Percent</b>
Persons aged 20 years and above whose highest level of education completed is "A" level (S.6)	539	2.4
Males aged 20 years and above whose highest level of education completed is "A" level (S.6)	375	3.4
Females aged 20 years and above whose highest level of education completed is "A" level (S.6)	164	1.5

**3: ILLITERACY STATUS**

<b>3.1: Persons aged 18 years and above</b>	<b>Number</b>	<b>Percent</b>
Persons aged 18 years and above who are illiterate	5,238	21.4
Males aged 18 years and above who are illiterate	2,173	18.0
Females aged 18 years and above who are illiterate	3,065	24.7
<b>3.2: Other age groups</b>	<b>Number</b>	<b>Percent</b>
Persons aged 10-17 years who are illiterate	1,896	16.6
Persons aged 18-30 years who are illiterate	1,515	12.7
Persons aged 60 years and above who are illiterate	1,312	52.3

**4: OWNERSHIP OF A BIRTH CERTIFICATE**

<b>4.1: Children with Birth Certificates</b>	<b>Number</b>	<b>Percent</b>
Children less than 1 year who have a Birth Certificate	401	21.8
Children less than 5 years who have a Birth Certificate	1,895	20.0
Children 0-8 years who have a Birth Certificate	3,183	19.2
Children 0-17 years who have a Birth Certificate	5,157	18.2

**5: PARENTAL SURVIVAL AND ORPHANHOOD**

<b>5.1: Children 0-8 years</b>	<b>Number</b>	<b>Percent</b>
Children 0-8 years who have lost one parent	578	3.5
Children 0-8 years who have lost both parents	71	0.4
Children 0-8 years who have lost at least a parent (total number of orphans)	649	3.9
Children 0-8 years who have both parents	15,959	96.1
<b>5.2: All children (0-17 years)</b>	<b>Number</b>	<b>Percent</b>
Children 0-17 years who have lost one parent	2,246	7.6
Children 0-17 years who have lost both parents	363	1.2
Children 0-17 years who have lost at least a parent (total number of orphans)	2,609	8.8
Children 0-17 years who have both parents	26,951	91.2

**6: DISABILITY**

<b>6.1: Persons with a disability</b>	<b>Number</b>	<b>Percent</b>
Persons aged 2 years and above with a disability	6,039	12.0
Persons aged 2 years and above with a seeing disability	3,259	6.5
Persons aged 2 years and above with a hearing disability	1,485	2.9
Persons aged 2 years and above with a walking disability	2,585	5.1
Persons aged 2 years and above with a remembering disability	2,496	4.9
Persons aged 2 years and above with multiple disabilities	5,691	34.3
Children aged 2-17 years with a disability	1,095	4.2
Youth aged 18-30 years with a disability	816	6.9
Older persons aged 60 years and above with a disability	1,707	68.0

**7: MARRIAGE AND CHILDBEARING**

<b>7.1: Marital status of the population</b>	<b>Number</b>	<b>Percent</b>
Persons aged 10 years and above who are married	7,841	44.1
Persons aged 18 years and above who are married	7,501	60.5
Females aged 50 years and above who are widowed	1,140	43.5
Females aged 10-17 years who have ever been married	384	7.1
Females aged 10-19 years who have ever been married	941	14.5
<b>7.2: Females who have had a birth</b>	<b>Number</b>	<b>Percent</b>
Females aged 12-17 years who have given birth	287	7.3
Females aged 12-19 years who have given birth	767	15.2

**8: WORKING STATUS**

<b>8.1: Working persons</b>	<b>Number</b>	<b>Percent</b>
Persons aged 10-15 years who were working	2,051	22.8
Persons aged 10-17 years who were working	3,121	27.4
Persons aged 18-30 years who were working	9,679	81.3
Persons aged 16-64 years who were working	20,977	83.3
Persons aged 18 years and above who were working	21,011	85.8
Persons aged 60 years and above who were working	1,818	72.5
<b>8.2: Youths Not working and not in school</b>		
Youths (Persons aged 18-30 years) who were neither working nor in school	903	7.6

**9: USE OF ICT**

<b>9.1: Mobile phone ownership (10 years and above)</b>	<b>Number</b>	<b>Percent</b>
Persons aged 10 years and above that own at least one mobile phone	17,468	48.7
Males aged 10 years and above that own at least one mobile phone	9,571	52.9
Females aged 10 years and above that own at least one mobile phone	7,897	44.4
<b>9.2: Mobile phone ownership (18-30 years)</b>	<b>Number</b>	<b>Percent</b>
Persons aged 18-30 years and above that own at least one mobile phone	7,916	66.5
Males aged 18-30 years and above that own at least one mobile phone	4,404	74.3
Females aged 18-30 years and above that own at least one mobile phone	3,512	58.8
<b>9.3: Internet Usage (10 years and above)</b>	<b>Number</b>	<b>Percent</b>
Persons aged 10 years and above that use internet	1,556	4.3
Males aged 10 years and above that use internet	1,062	5.9
Females aged 10 years and above that use internet	494	2.8
<b>9.4: Internet Usage (18-30 years)</b>	<b>Number</b>	<b>Percent</b>
Persons aged 18-30 years that use internet	876	7.4
Males aged 18-30 years that use internet	631	10.6
Females aged 18-30 years that use internet	245	4.1

**10: HOUSING CONDITIONS**

<b>10.1: Construction Materials For the Dwelling Units</b>	<b>Number</b>	<b>Percent</b>
Households living in dwelling units constructed using permanent roof materials	12,804	97.2
Households living in dwelling units constructed using permanent wall materials	9,088	69.0
Households living in dwelling units constructed using permanent floor materials	5,694	43.2
<b>10.2: Status of Dwelling Units</b>	<b>Number</b>	<b>Percent</b>
Households living in semi-permanent dwelling units	7,383	56.0
Households living in temporary dwelling units	352	2.7

**11: ACCESS TO COMMUNITY SERVICES**

<b>11.1: Access to a Primary school</b>	<b>Number</b>	<b>Percent</b>
Households that are 5 km or more to the nearest primary school, <u>whether public or private</u>	765	5.8
Households that are 5 km or more to the nearest <u>public</u> primary school	1,286	9.8
<b>11.2: Access to a Secondary school</b>	<b>Number</b>	<b>Percent</b>
Households that are 5 km or more to the nearest secondary school, <u>whether public or private</u>	2,782	21.1
Households that are 5 km or more to the nearest <u>public</u> secondary school	6,754	51.3
<b>11.3: Access to a Health Facility</b>	<b>Number</b>	<b>Percent</b>
Households that are 5 km or more to the nearest health facility, <u>whether public or private</u>	2,611	19.8
Households that are 5 km or more to the nearest <u>public</u> health facility	3,823	29.0
<b>11.4: Access to a Police post /Police station</b>	<b>Number</b>	<b>Percent</b>
Households that are 5 km or more to the nearest Police Post/Police Station	4,543	34.5

**12: HOUSEHOLD HEALTH AND HYGIENE**

<b>12.1:Ownership of Mosquito nets</b>	<b>Number</b>	<b>Percent</b>
Households that own at least a mosquito net	11,338	86.0
Households that own at least a mosquito net that was received free (Government /NGO)	10,810	95.3
<b>12.2: Source Of Water For Drinking</b>	<b>Number</b>	<b>Percent</b>
Households that have access to piped water	491	3.7
Households that use a bore hole	3,575	27.1
<b>12.3:Ownership of a Toilet facility</b>	<b>Number</b>	<b>Percent</b>
Households without any toilet facility	386	2.9
<b>12.4: Other environmental conditions</b>	<b>Number</b>	<b>Percent</b>
Households that <u>properly</u> dispose off solid waste	4,468	33.9
Households which are not living in decent dwellings	12,820	97.3

**13: HOUSEHOLD ASSETS**

<b>13.1: Owner occupied Dwellings</b>	<b>Number</b>	<b>Percent</b>
Households that are owner occupied	8,320	63.1
Male headed households that are owner occupied	5,986	61.4
Female headed households that are owner occupied	2,334	68.1
<b>13.2: Movable Assets</b>	<b>Number</b>	<b>Percent</b>
Households that own a television	1,252	9.5
Households that own a computer	124	0.9
Households that own a bicycle	3,465	26.3
Households that own a radio	9,522	72.3

**14: OTHER HOUSEHOLD CHARACTERISTICS**

<b>14.1: Main source of information</b>	<b>Number</b>	<b>Percent</b>
Households whose main source of information is a radio	9,226	70.0
Households whose main source of information is a community announcer	630	4.8
Households whose main source of information is a telephone	579	4.4
<b>14.2: Household Economy and Welfare</b>	<b>Number</b>	<b>Percent</b>
Households that received remittances from abroad in the last 12 months	2,109	16.0
Households where any member possesses a bank account	1,940	14.7
Households that depend on subsistence farming as a main source of livelihood	9,062	68.8
Households with at least one member engaged in a non-agricultural household based enterprise	7,120	89.7
Households where (members aged 5 years and above) consume less than two meals in a day	1,693	12.8
<b>14.3: Source of Energy for lighting</b>	<b>Number</b>	<b>Percent</b>
Households that have access to electricity	2,024	15.4
Households that use Tadooba for lighting	8,057	61.1

**15: HOUSEHOLD BASED AGRICULTURAL ACTIVITIES**

<b>15.1: Household based Agricultural activities</b>	<b>Number</b>	<b>Percent</b>
Households engaged in crop growing	11,083	84.1
Households engaged in maize growing	9,323	70.8
Households engaged in coffee growing	2,263	17.2
Households engaged in growing of beans	9,452	71.7
Households engaged in growing of millet	47	0.4
Households engaged in growing of sweet potatoes	4,410	33.5
Households engaged in growing of matooke	3,676	27.9
Households engaged livestock farming	7,411	56.2
Households engaged in either crop growing or livestock farming	11,412	86.6

## **APPENDICES**



**Appendix 1: Population by Sex and Type of Residence by District, Uganda 2014**



<b>Central</b>	<b>Male</b>	<b>Female</b>	<b>Urban</b>	<b>Rural</b>	<b>Total</b>
Buikwe	207,324	215,447	299,628	123,143	422,771
Bukomansimbi	75,109	76,304	12,797	138,616	151,413
Butambala	50,082	50,758	15,553	85,287	100,840
Buvuma	48,414	41,476	9,935	79,955	89,890
Gomba	82,167	77,755	12,439	147,483	159,922
Kalangala	31,349	22,944	4,980	49,313	54,293
Kalungu	89,679	93,553	37,094	146,138	183,232
Kampala	712,762	794,318	1,507,080	0	1,507,080
Kayunga	180,706	187,356	27,061	341,001	368,062
Kiboga	75,847	72,371	33,520	114,698	148,218
Kyankwanzi	111,539	103,154	30,621	184,072	214,693
Luwero	226,805	230,153	95,749	361,209	456,958
Lwengo	133,474	141,479	42,919	232,034	274,953
Lyantonde	46,714	47,039	13,823	79,930	93,753
Masaka	145,552	151,452	103,227	193,777	297,004
Mityana	165,717	163,247	107,645	221,319	328,964
Mpigi	125,404	125,144	43,360	207,188	250,548
Mubende	346,654	337,694	113,803	570,545	684,348
Mukono	289,757	307,047	162,710	434,094	596,804
Nakaseke	104,795	92,578	39,397	157,976	197,373
Nakasongola	93,323	88,472	24,667	157,128	181,795
Rakai	254,366	261,943	34,041	482,268	516,309
Ssembabule	126,084	126,513	16,949	235,648	252,597
Wakiso	949,035	1,048,383	1,681,449	315,969	1,997,418
<b>Eastern</b>	<b>Male</b>	<b>Female</b>	<b>Urban</b>	<b>Rural</b>	<b>Total</b>
Amuria	132,521	138,407	17,385	253,543	270,928
Budaka	100,620	106,977	23,809	183,788	207,597
Bududa	105,820	104,353	13,753	196,420	210,173
Bugiri	185,925	196,988	64,223	318,690	382,913
Bukedea	98,684	104,916	10,927	192,673	203,600
Bukwo	45,058	44,298	12,094	77,262	89,356
Bulambuli	86,108	88,405	16,867	157,646	174,513
Busia	156,447	167,215	54,798	268,864	323,662
Butaleja	119,466	124,687	33,201	210,952	244,153
Buyende	158,615	164,452	23,201	299,866	323,067
Iganga	241,182	263,015	92,792	411,405	504,197
Jinja	230,189	241,053	172,714	298,528	471,242
Kaberamaido	106,042	108,984	4,032	210,994	215,026
Kaliro	115,969	120,230	16,753	219,446	236,199
Kamuli	236,389	249,930	58,984	427,335	486,319
Kapchorwa	51,658	53,528	44,211	60,975	105,186
Katakwi	81,673	84,558	9,280	156,951	166,231
Kibuku	97,476	104,557	17,436	184,597	202,033
Kumi	116,457	122,811	36,493	202,775	239,268

Kween	47,404	46,263	6,462	87,205	93,667
Luuka	113,566	124,454	10,264	227,756	238,020
Manafwa	173,580	180,245	53,837	299,988	353,825
Mayuge	229,252	243,987	33,756	439,483	473,239
Mbale	233,339	255,621	126,544	362,416	488,960
Namayingo	106,303	109,140	15,740	199,703	215,443
Namutumba	123,911	128,646	18,679	233,878	252,557
Ngora	68,414	73,505	15,148	126,771	141,919
Pallisa	188,125	198,765	37,937	348,953	386,890
Serere	139,493	146,410	12,158	273,745	285,903
Sironko	120,862	121,559	34,104	208,317	242,421
Soroti	144,976	151,857	49,685	247,148	296,833
Tororo	250,830	266,250	72,325	444,755	517,080

<b>Northern</b>	<b>Male</b>	<b>Female</b>	<b>Urban</b>	<b>Rural</b>	<b>Total</b>
Abim	52,456	55,510	17,168	90,798	107,966
Adjumani	108,298	116,953	41,064	184,187	225,251
Agago	110,495	117,297	29,153	198,639	227,792
Alebtong	110,989	116,552	6,702	220,839	227,541
Amolatar	73,014	74,152	21,479	125,687	147,166
Amudat	54,246	51,523	11,786	93,983	105,769
Amuru	91,284	95,412	9,302	177,394	186,696
Apac	180,995	187,631	75,300	293,326	368,626
Arua	374,755	407,322	61,962	720,115	782,077
Dokolo	89,476	93,617	20,135	162,958	183,093
Gulu	134,571	141,042	150,306	125,307	275,613
Kaabong	79,207	88,672	11,559	156,320	167,879
Kitgum	99,258	104,790	75,581	128,467	204,048
Koboko	102,250	104,245	57,902	148,593	206,495
Kole	117,164	122,163	8,860	230,467	239,327
Kotido	86,169	94,881	66,454	114,596	181,050
Lamwo	65,106	69,265	21,700	112,671	134,371
Lira	196,663	211,380	101,155	306,888	408,043
Maracha	87,900	98,234	9,291	176,843	186,134
Moroto	49,746	53,686	14,196	89,236	103,432
Moyo	68,940	70,072	10,579	128,433	139,012
Nakapiripirit	74,578	82,112	3,727	152,963	156,690
Napak	65,518	76,706	4,733	137,491	142,224
Nebbi	191,104	205,690	58,069	338,725	396,794
Nwoya	65,969	67,537	13,592	119,914	133,506
Omoro	78,837	81,895	18,952	141,780	160,732
Otuke	51,187	53,067	6,213	98,041	104,254
Oyam	187,121	196,523	18,399	365,245	383,644
Pader	86,635	91,369	13,382	164,622	178,004
Yumbe	230,626	254,196	34,806	450,016	484,822
Zombo	115,824	124,257	43,723	196,358	240,081

Western	Male	Female	Urban	Rural	Total
Buhweju	59,059	61,661	2,956	117,764	120,720
Buliisa	57,801	55,360	7,238	105,923	113,161
Bundibugyo	108,435	115,952	40,219	184,168	224,387
Bushenyi	114,207	120,236	56,070	178,373	234,443
Hoima	287,906	285,080	105,944	467,042	572,986
Ibanda	121,440	128,185	136,860	112,765	249,625
Isingiro	235,621	250,739	58,408	427,952	486,360
Kabale	158,238	173,097	78,585	252,750	331,335
Kabarole	233,648	235,588	158,231	311,005	469,236
Kagadi	171,812	179,221	45,286	305,747	351,033
Kakumiro	147,157	145,951	9,834	283,274	293,108
Kamwenge	202,503	211,951	22,840	391,614	414,454
Kanungu	121,081	131,063	51,008	201,136	252,144
Kasese	338,215	356,772	140,050	554,937	694,987
Kibaale	70,815	70,132	6,650	134,297	140,947
Kiruhura	166,214	161,863	31,874	296,203	328,077
Kiryandongo	132,822	133,375	55,770	210,427	266,197
Kisoro	126,055	155,650	27,611	254,094	281,705
Kyegegwa	140,617	141,020	26,294	255,343	281,637
Kyenjojo	210,599	211,605	64,812	357,392	422,204
Masindi	148,121	142,992	94,438	196,675	291,113
Mbarara	230,082	242,547	195,318	277,311	472,629
Mitooma	86,484	96,960	11,396	172,048	183,444
Ntoroko	34,038	32,967	23,789	43,216	67,005
Ntungamo	232,469	251,372	71,485	412,356	483,841
Rubanda	92,011	104,885	26,669	170,227	196,896
Rubirizi	61,765	67,384	17,274	111,875	129,149
Rukungiri	150,016	164,678	43,576	271,118	314,694
Sheema	99,225	108,118	110,256	97,087	207,343

## Appendix 2: The Household Questionnaire and code list for the National Population and Housing Census 2014

	<b>Republic of Uganda</b> <b>National Population and Housing Census 2014</b> <b>HOUSEHOLD QUESTIONNAIRE</b>																																																																																																																																																															
<b>BOOK NUMBER</b>																																																																																																																																																																
<div style="display: flex; justify-content: space-between;"> <div style="width: 80%;"> <p><small>IDENTIFICATION PARTICULARS</small></p> <table border="1" style="width: 100%; border-collapse: collapse;"> <tr> <td colspan="20" style="text-align: center; padding: 2px;">WRITE NAME IN CAPITAL LETTERS</td> </tr> <tr> <td style="width: 30%;">DISTRICT:</td> <td colspan="19"></td> </tr> <tr> <td>COUNTY/MUNICIPALITY:</td> <td colspan="19"></td> </tr> <tr> <td>SUB COUNTY/DIVISION/TOWN COUNCIL:</td> <td colspan="19"></td> </tr> <tr> <td>PARISH/WARD:</td> <td colspan="19"></td> </tr> <tr> <td>LC1:</td> <td colspan="19"></td> </tr> <tr> <td>EA:</td> <td colspan="19"></td> </tr> </table> </div> <div style="width: 15%; text-align: center;"> <p><small>CODE</small></p> <table border="1" style="width: 100%; border-collapse: collapse;"> <tr> <td style="width: 10px; height: 20px;"></td> <td style="width: 10px; height: 20px;"></td> <td style="width: 10px; height: 20px;"></td> </tr> <tr> <td style="width: 10px; height: 20px;"></td> <td style="width: 10px; height: 20px;"></td> <td style="width: 10px; height: 20px;"></td> </tr> <tr> <td style="width: 10px; height: 20px;"></td> <td style="width: 10px; height: 20px;"></td> <td style="width: 10px; height: 20px;"></td> </tr> <tr> <td style="width: 10px; height: 20px;"></td> <td style="width: 10px; height: 20px;"></td> <td style="width: 10px; height: 20px;"></td> </tr> <tr> <td style="width: 10px; height: 20px;"></td> <td style="width: 10px; height: 20px;"></td> <td style="width: 10px; height: 20px;"></td> </tr> <tr> <td style="width: 10px; height: 20px;"></td> <td style="width: 10px; height: 20px;"></td> <td style="width: 10px; height: 20px;"></td> </tr> </table> </div> </div>			WRITE NAME IN CAPITAL LETTERS																				DISTRICT:																				COUNTY/MUNICIPALITY:																				SUB COUNTY/DIVISION/TOWN COUNCIL:																				PARISH/WARD:																				LC1:																				EA:																																					
WRITE NAME IN CAPITAL LETTERS																																																																																																																																																																
DISTRICT:																																																																																																																																																																
COUNTY/MUNICIPALITY:																																																																																																																																																																
SUB COUNTY/DIVISION/TOWN COUNCIL:																																																																																																																																																																
PARISH/WARD:																																																																																																																																																																
LC1:																																																																																																																																																																
EA:																																																																																																																																																																
<table border="1" style="width: 100%; border-collapse: collapse;"> <tr> <td style="width: 30%;">ENUMERATOR'S NAME AND CODE:</td> <td style="width: 50%;"></td> <td style="width: 20%; text-align: center;"> <small>Code</small>  <table border="1" style="width: 100%; border-collapse: collapse;"> <tr> <td style="width: 10px; height: 20px;"></td> <td style="width: 10px; height: 20px;"></td> <td style="width: 10px; height: 20px;"></td> </tr> </table> </td> </tr> <tr> <td>ENUMERATOR'S SIGNATURE:</td> <td colspan="2"></td> </tr> <tr> <td>DATE: (dd/mm/yyyy):</td> <td style="text-align: center;"> <table border="1" style="display: inline-table; width: 20px; height: 20px;"></table> <table border="1" style="display: inline-table; width: 20px; height: 20px;"></table> /            <table border="1" style="display: inline-table; width: 20px; height: 20px;"></table> <table border="1" style="display: inline-table; width: 20px; height: 20px;"></table> /            <table border="1" style="display: inline-table; width: 20px; height: 20px;"></table> <table border="1" style="display: inline-table; width: 20px; height: 20px;"></table> <table border="1" style="display: inline-table; width: 20px; height: 20px;"></table> </td> </tr> <tr> <td>PARISH SUPERVISOR'S NAME AND CODE:</td> <td></td> <td style="text-align: center;"> <table border="1" style="width: 100%; border-collapse: collapse;"> <tr> <td style="width: 10px; height: 20px;"></td> <td style="width: 10px; height: 20px;"></td> <td style="width: 10px; height: 20px;"></td> </tr> </table> </td> </tr> <tr> <td>PARISH SUPERVISOR'S SIGNATURE:</td> <td colspan="2"></td> </tr> <tr> <td>DATE: (dd/mm/yyyy):</td> <td style="text-align: center;"> <table border="1" style="display: inline-table; width: 20px; height: 20px;"></table> <table border="1" style="display: inline-table; width: 20px; height: 20px;"></table> /            <table border="1" style="display: inline-table; width: 20px; height: 20px;"></table> <table border="1" style="display: inline-table; width: 20px; height: 20px;"></table> /            <table border="1" style="display: inline-table; width: 20px; height: 20px;"></table> <table border="1" style="display: inline-table; width: 20px; height: 20px;"></table> <table border="1" style="display: inline-table; width: 20px; height: 20px;"></table> </td> </tr> </table>			ENUMERATOR'S NAME AND CODE:		<small>Code</small> <table border="1" style="width: 100%; border-collapse: collapse;"> <tr> <td style="width: 10px; height: 20px;"></td> <td style="width: 10px; height: 20px;"></td> <td style="width: 10px; height: 20px;"></td> </tr> </table>				ENUMERATOR'S SIGNATURE:			DATE: (dd/mm/yyyy):	<table border="1" style="display: inline-table; width: 20px; height: 20px;"></table> <table border="1" style="display: inline-table; width: 20px; height: 20px;"></table> / <table border="1" style="display: inline-table; width: 20px; height: 20px;"></table> <table border="1" style="display: inline-table; width: 20px; height: 20px;"></table> / <table border="1" style="display: inline-table; width: 20px; height: 20px;"></table> <table border="1" style="display: inline-table; width: 20px; height: 20px;"></table> <table border="1" style="display: inline-table; width: 20px; height: 20px;"></table>	PARISH SUPERVISOR'S NAME AND CODE:		<table border="1" style="width: 100%; border-collapse: collapse;"> <tr> <td style="width: 10px; height: 20px;"></td> <td style="width: 10px; height: 20px;"></td> <td style="width: 10px; height: 20px;"></td> </tr> </table>				PARISH SUPERVISOR'S SIGNATURE:			DATE: (dd/mm/yyyy):	<table border="1" style="display: inline-table; width: 20px; height: 20px;"></table> <table border="1" style="display: inline-table; width: 20px; height: 20px;"></table> / <table border="1" style="display: inline-table; width: 20px; height: 20px;"></table> <table border="1" style="display: inline-table; width: 20px; height: 20px;"></table> / <table border="1" style="display: inline-table; width: 20px; height: 20px;"></table> <table border="1" style="display: inline-table; width: 20px; height: 20px;"></table> <table border="1" style="display: inline-table; width: 20px; height: 20px;"></table>																																																																																																																																								
ENUMERATOR'S NAME AND CODE:		<small>Code</small> <table border="1" style="width: 100%; border-collapse: collapse;"> <tr> <td style="width: 10px; height: 20px;"></td> <td style="width: 10px; height: 20px;"></td> <td style="width: 10px; height: 20px;"></td> </tr> </table>																																																																																																																																																														
ENUMERATOR'S SIGNATURE:																																																																																																																																																																
DATE: (dd/mm/yyyy):	<table border="1" style="display: inline-table; width: 20px; height: 20px;"></table> <table border="1" style="display: inline-table; width: 20px; height: 20px;"></table> / <table border="1" style="display: inline-table; width: 20px; height: 20px;"></table> <table border="1" style="display: inline-table; width: 20px; height: 20px;"></table> / <table border="1" style="display: inline-table; width: 20px; height: 20px;"></table> <table border="1" style="display: inline-table; width: 20px; height: 20px;"></table> <table border="1" style="display: inline-table; width: 20px; height: 20px;"></table>																																																																																																																																																															
PARISH SUPERVISOR'S NAME AND CODE:		<table border="1" style="width: 100%; border-collapse: collapse;"> <tr> <td style="width: 10px; height: 20px;"></td> <td style="width: 10px; height: 20px;"></td> <td style="width: 10px; height: 20px;"></td> </tr> </table>																																																																																																																																																														
PARISH SUPERVISOR'S SIGNATURE:																																																																																																																																																																
DATE: (dd/mm/yyyy):	<table border="1" style="display: inline-table; width: 20px; height: 20px;"></table> <table border="1" style="display: inline-table; width: 20px; height: 20px;"></table> / <table border="1" style="display: inline-table; width: 20px; height: 20px;"></table> <table border="1" style="display: inline-table; width: 20px; height: 20px;"></table> / <table border="1" style="display: inline-table; width: 20px; height: 20px;"></table> <table border="1" style="display: inline-table; width: 20px; height: 20px;"></table> <table border="1" style="display: inline-table; width: 20px; height: 20px;"></table>																																																																																																																																																															

**A**

UGANDA BUREAU OF STATISTICS, P.O. Box 7186, Kampala, UGANDA. Tel: +256-414-706000. Fax: +256-414-237553. Email: [ubos@ubos.org](mailto:ubos@ubos.org) Website: [www.ubos.org](http://www.ubos.org)

**Hello, my name is \_\_\_\_\_**  
**and I work with Uganda Bureau of Statistics (UBOS). We are conducting the National Population and Housing Census 2014. We are visiting each and every household in the country collecting information about individuals and the homesteads they live in. It takes about 40 minutes to complete the interview. Whatever information you provide will be kept strictly confidential. We would very much appreciate your participation and co-operation in this Census.**

Result Code (R1)	Ethnicity (P8)	Country Of Citizenship For Non-Ugandans	Religion (P9)	Section 5: Crop Codes
1 Completed	531 Acholi	551 Kikwa	10 No Religion	10 Maize
2 Partially Completed	532 Aliba	552 Karamojong	11 Anglican	11 Beans
3 Not interviewed	533 Alur	553 Kebu (Kebu)	12 Catholic	12 Banana (Food)
	534 Aringa	554 Kuku	13 Muslim	13 Cassava
	535 Baamba	555 Kuman	14 Seventh-Day Adventist	14 Sweet Potatoes
	536 Babukusu	556 Lango	15 Orthodox	15 G/huts
	537 Babuli	557 Lendu	16 Pentecostal/ Born Again/ Evangelical	16 Sorghum
	538 Bafumbira	558 Lugbara	17 Baha'i	17 Millets
	539 Basamia	559 Madi	18 Baptist	18 Ses. Sim
	540 Basoga	560 Mening	19 Jew	19 Banana (Beer)
	541 Basongora	561 Mvuba	20 Presbyterian	20 Irish Potatoes
	542 Bakungu	562 Nagore	21 Mammun	21 Soya Beans
	543 Baturo	563 Ngikuo	22 Hindu	22 Rice
	544 Batuku	564 Nubi	23 Buddhist	23 Banana (sweet)
	545 Bawwa	565 Nyangia	24 Jehovah's Witness	24 Field Peas
	546 Chope	566 Pokot	25 Salvation Army	25 (Kwao)
	547 Dadoth	567 Ruli	26 Traditional	25 Cow Peas
	548 Ethur	568 Sabiny	27 Others	26 Pigeon Peas
	549 Gimara	569 Shana		27 Sugar cane
	550 Ik (Tusua)	570 Shona		28 Yam
	551 Iteso	571 Sika		29 Avocado
	552 Jie	572 Sika		30 Tomatoes
	553 Jomim	573 Sika		31 Sunflower
	554 Jopadhola	574 Sika		32 Cotton
		575 Sika		33 Jackfruit
		576 Sika		34 Pineapples
		577 Sika		35 Pumpkins
		578 Sika		36 Mango
		579 Sika		37 Oranges
		580 Sika		38 Cabbage
		581 Sika		
		582 Sika		
		583 Sika		
		584 Sika		
		585 Sika		
		586 Sika		
		587 Sika		
		588 Sika		
		589 Sika		
		590 Sika		
		591 Sika		
		592 Sika		
		593 Sika		
		594 Sika		
		595 Sika		
		596 Sika		
		597 Sika		
		598 Sika		
		599 Sika		
		600 Sika		
		601 Sika		
		602 Sika		
		603 Sika		
		604 Sika		
		605 Sika		
		606 Sika		
		607 Sika		
		608 Sika		
		609 Sika		
		610 Sika		
		611 Sika		
		612 Sika		
		613 Sika		
		614 Sika		
		615 Sika		
		616 Sika		
		617 Sika		
		618 Sika		
		619 Sika		
		620 Sika		
		621 Sika		
		622 Sika		
		623 Sika		
		624 Sika		
		625 Sika		
		626 Sika		
		627 Sika		
		628 Sika		
		629 Sika		
		630 Sika		
		631 Sika		
		632 Sika		
		633 Sika		
		634 Sika		
		635 Sika		
		636 Sika		
		637 Sika		
		638 Sika		
		639 Sika		
		640 Sika		
		641 Sika		
		642 Sika		
		643 Sika		
		644 Sika		
		645 Sika		
		646 Sika		
		647 Sika		
		648 Sika		
		649 Sika		
		650 Sika		
		651 Sika		
		652 Sika		
		653 Sika		
		654 Sika		
		655 Sika		
		656 Sika		
		657 Sika		
		658 Sika		
		659 Sika		
		660 Sika		
		661 Sika		
		662 Sika		
		663 Sika		
		664 Sika		
		665 Sika		
		666 Sika		
		667 Sika		
		668 Sika		
		669 Sika		
		670 Sika		
		671 Sika		
		672 Sika		
		673 Sika		
		674 Sika		
		675 Sika		
		676 Sika		
		677 Sika		
		678 Sika		
		679 Sika		
		680 Sika		
		681 Sika		
		682 Sika		
		683 Sika		
		684 Sika		
		685 Sika		
		686 Sika		
		687 Sika		
		688 Sika		
		689 Sika		
		690 Sika		
		691 Sika		
		692 Sika		
		693 Sika		
		694 Sika		
		695 Sika		
		696 Sika		
		697 Sika		
		698 Sika		
		699 Sika		
		700 Sika		
		701 Sika		
		702 Sika		
		703 Sika		
		704 Sika		
		705 Sika		
		706 Sika		
		707 Sika		
		708 Sika		
		709 Sika		
		710 Sika		
		711 Sika		
		712 Sika		
		713 Sika		
		714 Sika		
		715 Sika		
		716 Sika		
		717 Sika		
		718 Sika		
		719 Sika		
		720 Sika		
		721 Sika		
		722 Sika		
		723 Sika		
		724 Sika		
		725 Sika		
		726 Sika		
		727 Sika		
		728 Sika		
		729 Sika		
		730 Sika		
		731 Sika		
		732 Sika		
		733 Sika		
		734 Sika		
		735 Sika		
		736 Sika		
		737 Sika		
		738 Sika		
		739 Sika		
		740 Sika		
		741 Sika		
		742 Sika		
		743 Sika		
		744 Sika		
		745 Sika		
		746 Sika		
		747 Sika		
		748 Sika		
		749 Sika		
		750 Sika		
		751 Sika		
		752 Sika		
		753 Sika		
		754 Sika		
		755 Sika		
		756 Sika		
		757 Sika		
		758 Sika		
		759 Sika		
		760 Sika		
		761 Sika		
		762 Sika		
		763 Sika		
		764 Sika		
		765 Sika		
		766 Sika		
		767 Sika		
		768 Sika		
		769 Sika		
		770 Sika		
		771 Sika		
		772 Sika		
		773 Sika		
		774 Sika		
		775 Sika		
		776 Sika		
		777 Sika		
		778 Sika		
		779 Sika		
		780 Sika		
		781 Sika		
		782 Sika		
		783 Sika		
		784 Sika		
		785 Sika		
		786 Sika		
		787 Sika		
		788 Sika		
		789 Sika		
		790 Sika		
		791 Sika		
		792 Sika		
		793 Sika		
		794 Sika		
		795 Sika		
		796 Sika		
		797 Sika		
		798 Sika		
		799 Sika		
		800 Sika		

69

HOUSEHOLD NUMBER		TOTAL NUMBER OF HOUSEHOLD POPULATION		RESULT CODE		FORM		OF																													
SECTION 1: PARTICULARS OF HOUSEHOLD MEMBERS																																					
P0		P1		P2		P3		P4		FOR ALL PERSONS		P5		P6		P7		P8		P9		P10		P11		P12		P13		P14		P15		P16		P17	
Person number	Please give the full names of the following: 1. The Household head 2. All Persons who spent the night of 27/28th August 2014 in this household including visitors  (Write the First Name and Last Name only)			What is [NAME'S] relationship to the head of the household? (Refer to code list P2)	Is [NAME] male or female? 1=Male 2=Female	What is [NAME'S] residential status? (Refer to code list P4)	What is [NAME'S] exact date of birth? (Write the Day, Month and Year)		What is [NAME'S] age in completed years?  If age is less than one year record 00, if 95 years and above, record 99.	Does [NAME] have a Birth Certificate? 1=Yes, long certificate 2=Yes, Short certificate 3=No 8=DK	What is [NAME'S] ethnicity?  If non Ugandan write code of country of citizenship (Refer to code list P8)	What is [NAME'S] religion? (Refer to code list P9)	Is [NAME'S] biological mother alive? 1=Yes 2=No 8=DK	Is [NAME'S] biological father alive? 1=Yes 2=No 8=DK	In which District was [NAME] born before moving to this District?  If this person was living outside Uganda, write code of country of previous residence (Refer to code list P12)	How many years has [NAME] lived in this District continuously?  For less than one year record 00  For visitors, record 97 for "NA"	Does [NAME] have difficulty seeing even if he/she is wearing glasses? (Refer to code list P14-P17)	Does [NAME] have difficulty hearing even if he/she is using a hearing aid? (Refer to code list P14-P17)	Does [NAME] have difficulty walking or climbing stairs? (Refer to code list P14-P17)	Does [NAME] have difficulty in remembering or concentrating? (Refer to code list P14-P17)																	
Example:		VERONICA NAKIBUUKA		11	2	1	DD MM YYYY 19 10 1965		48	1	519	11	1	1	104	11	2	1	3	1																	
00																																					

01A

DB2



BOOK NUMBER				SHEET NUMBER 02				HOUSEHOLD NUMBER																		
SECTION 1: PARTICULARS OF HOUSEHOLD MEMBERS																										
FOR PERSONS AGED 3 YEARS AND ABOVE				FOR PERSONS AGED 10 YEARS AND ABOVE				DC3																		
P0	P18	P19	P20	P21	P22	P23	P24	P25	P26	P27			P28			P29			P30			P31	P32	P33		
Person number	Did [NAME] attend school in 2014, left school or never been to school? (Refer to code list P18)	What is the highest grade / class of formal education that [NAME] completed? (Refer to Code list P19)	What is [NAME'S] field of specialisation? (If no specialisation, write 97)	Can [NAME] read and write a sentence meaning fully in any language? 1=Read & Write 2=Read only 3=Write only 4=No 7=DK 8=DK	What was [NAME'S] main activity status in the last 7 days? (Refer to code list P22)	What was [NAME'S] main type of work (occupation) during the last 7 days? (DESCRIBE IN NOT LESS THAN TWO WORDS)	Does [NAME] own a mobile phone? If yes, write number of phone (landline) owned. If none, write 0. If 0, write 0. If 0, write 0. 7=DK	Does [NAME] use internet? 1=Yes 2=No 7=N/A 8=DK	What is [NAME'S] current marital status? (Refer to code list P26)	How many children has [NAME] ever borne alive? Of the total children ever borne, how many are boys and how many are girls? If the woman has never given birth, record 00 in the boxes below 97=N/A	Of the total children ever borne, how many are alive? Among these children how many are boys and how many are girls? If the woman has never given birth, record 00 in the boxes below 97=N/A	Of the total children ever borne, how many are dead? Among these children, how many are boys and how many are girls? If the woman has never given birth, record 00 in the boxes below 97=N/A	When did [NAME] have her last live birth? If N/A, write 97 for month, 9997 for year. If Don't Know, write 98 for month, 9998 for year	What is the sex of the last live birth? 1=Male 2=Female 7=N/A	What is the survival status of the last live birth? 1=Alive 2=Dead 7=N/A 8=DK	If the last child is dead, write age at death in completed months. If 60+ months, record 60. Write 97 if N/A										
			Specialisation Detail	Code			Occupation Detail	Code	Total Boys Girls			Total Boys Girls			Total Boys Girls			M M Y Y Y Y								
00	2	43	EDUCATION	27	1	10	SECONDARY SCHOOL TEACHER	45	1	1	2	05	02	03	04	01	03	01	01	00	01	20	11	1	2	01

DC3

01A



72

BOOK NUMBER		SHEET NUMBER 03		HOUSEHOLD NUMBER	
<b>SECTION 4: HOUSEHOLD CHARACTERISTICS (CONTINUED)</b>					
<b>H31</b> Does any member in this household have a <b>functional account</b> in the bank or any other financial institution? (Active in last 12 months) 1= Yes, have an account in the Bank 2= Yes, have an account in another financial institution 3= Yes, have both in a bank and another financial institution 4= No 8= DK	<b>H32</b> How many meals do household members <b>aged 5 years and above</b> usually eat on average per day? (Record number of meals in the box provided)	<b>H33</b> Does every member in this household use <b>soap</b> to bathe? 1 = Yes 2 = No 8 = DK	<b>H34</b> Did every member in this household take <b>sugar</b> (at least once a day) during the last week? 1 = Yes 2 = No 8 = DK	<b>H35</b> Do you have <b>salt</b> in the house now? 1 = Yes 2 = No 8 = DK	<b>H36</b> Does every member in this household have at least <b>two sets of clothing</b> ? 1 = Yes 2 = No 8 = DK
			<b>H37</b> Does every member in this household have at least <b>one pair of shoes</b> ? <b>WITH EXCEPTION OF CHILDREN AGED ONE YEAR OR LESS</b> 1 = Yes 2 = No 8 = DK	<b>H38</b> Does every child in this household (i.e. all those under 18 years) have a <b>separate blanket</b> ? 1=Yes 2=No 7=N/A	
<b>SECTION 5: AGRICULTURAL MODULE</b>					
<b>A1</b> Does this household currently undertake any of the following agricultural activities? 1 =Yes, within EA 2 =Yes, outside EA but within District 3 = No		<b>A2</b> IF YES IN A1, how many does this household own?		<b>A3</b> IF YES IN A1, what is the main purpose of production? 1=House Consumption 2=Sale 7=N/A	
<b>A4</b> List the crops grown on the holding in order of importance Ser. No. Crop Name Crop Code If no crop grown, write 97					
I. Exotic / Cross breed cattle				1	
II. Local cattle rearing				2	
III. Goat rearing				3	
IV. Sheep rearing				4	
V. Piggery (pig rearing)				5	
VI. Poultry/Birds keeping				6	
VII. Rabbit rearing				7	
VIII. Apiculture (Bee keeping)				8	
IX. Aquaculture (fish farming)				9	
X. Presence of Forest / wooded land				10	
XI. Crop growing				11	
<b>SECTION 6: DEATHS IN THE HOUSEHOLD IN THE LAST 12 MONTHS</b>					
<b>D1</b> Did any deaths occur in this household in the last 12 months? I mean from September 2013 upto December 2013. What about from 1st January 2014 to 27th August 2014?	<b>D2</b> What was the name of the deceased? If no death in D1, write "Not Applicable" and end interview	<b>D3</b> What was the sex of [NAME]? 1 = Male 2 = Female 7 = N/A	<b>D4</b> How old was [NAME] at the time of death (in completed years)? If age is less than one year, write 00	<b>D5</b> What was the cause of [NAME'S] death? 1 = Disease 2 = Accident 3 = Violence 4 = Witchcraft 6 = Others 7 = N/A 8 = DK	<b>D6-D8 FOR FEMALES WHO DIED AGED 12-54 YEARS</b> Was [NAME] pregnant at the time of her death? 1= Yes 2= No 7= N/A 8= DK
<b>D7</b> Did [NAME] die while giving birth? 1= Yes 2= No 7= N/A 8= DK	<b>D8</b> Did [NAME] die within 6 weeks after delivery? 1= Yes 2= No 7= N/A 8= DK				
<b>If there is any "YES" in A1, ask Question A5, otherwise write 97 in Question A5</b>					
<b>A5</b> Which of the household members is the lead holder? (Record the person number of holder from P0) If not listed, record 00		<b>A6</b> Does the holding carry out any type of irrigation? 1=Yes 2=No 7=N/A		<b>A7</b> Does this household own agricultural land? 1 = Yes 2 = No	

DISTRICT OF PREVIOUS RESIDENCE (P12)					H7-H13, H17			
Central	Eastern	Northern	Western	Country of Previous Residence	Distance Conversion			
101 Kalangala	201 Bugiri	301 Adjumani	401 Bundibugyo	671 Kenya	1 mile = 1.6 km			
102 Kampala	202 Busia	302 Apac	402 Bushenyi	672 Tanzania	Mile	Km	Mile	Km
103 Kiboga	203 Iganga	303 Arua 304 Gulu	403 Hoima	673 Rwanda	0.5 = 0.8		16.5 = 26.4	
104 Luwero	204 Jinja	305 Kitgum	404 Kabale	674 Burundi	1.0 = 1.6		17.0 = 27.2	
105 Masaka	205 Kamuli	306 Kotido	405 Kabarole	675 South Sudan	1.5 = 2.4		17.5 = 28.0	
106 Mpigi	206 Kapchorwa	307 Lira	406 Kasese	676 Dem. Rep. Of Congo	2.0 = 3.2		18.0 = 28.8	
107 Mubende	207 Katakwi	308 Moroto	407 Kibaale	677 Somalia	2.5 = 4.0		18.5 = 29.6	
108 Mukono	208 Kumi	309 Moyo	408 Kisoro	678 Other Africa	3.0 = 4.8		19.0 = 30.4	
109 Nakasongola	209 Mbale	310 Nebbi	409 Masindi	681 United Kingdom	3.5 = 5.6		19.5 = 31.2	
110 Rakai	210 Pallisa	311 Nakapiripirit	410 Mbarara	682 Other Europe	4.0 = 6.4		20.0 = 32.0	
111 Sembabule	211 Soroti	312 Pader	411 Ntungamo	683 Asia 684 USA	4.5 = 7.2		20.5 = 32.8	
112 Kayunga	212 Tororo	313 Yumbe	412 Rukungiri	685 Canada	5.0 = 8.0		21.0 = 33.6	
113 Wakiso	213 Kaberamaido	314 Abim	413 Kamwenge	686 Central & Latin America	5.5 = 8.8		21.5 = 34.4	
114 Lyantonde	214 Mayuge	315 Amolatar	414 Kanungu	687 Australia	6.0 = 9.6		22.0 = 35.2	
115 Mityana	215 Sironko	316 Amuru	415 Kyenjojo	688 Oceania	6.5 = 10.4		22.5 = 36.0	
116 Nakaseke	216 Amuria	317 Dokolo	416 Buliisa	689 Non-Ugandan-Not Stated	7.0 = 11.2		23.0 = 36.8	
117 Buikwe	217 Budaka	318 Kaabong	417 Ibanda		7.5 = 12.0		23.5 = 37.6	
118 Bukomasimbi	218 Bududa	319 Koboko	418 Isingiro		8.0 = 12.8		24.0 = 38.4	
119 Butambala	219 Bukedea	320 Maracha	419 Kiruhura		8.5 = 13.6		24.5 = 39.2	
120 Buvuma	220 Bukwo	321 Oyam	420 Buhweju		9.0 = 14.4		25.0 = 40.0	
121 Gomba	221 Butaleja	322 Agago	421 Kiryandongo		9.5 = 15.2		25.5 = 40.8	
122 Kalungu	222 Kaliro	323 Alebtong	422 Kyegegwa		10.0 = 16.0		26.0 = 41.6	
123 Kyankwanzi	223 Manafwa	324 Amudat	423 Mitooma		10.5 = 16.8		26.5 = 42.4	
124 Lwengo	224 Namutumba	325 Kole	424 Ntoroko		11.0 = 17.6		27.0 = 43.2	
	225 Bulambuli	326 Lamwo	425 Rubirizi		11.5 = 18.4		27.5 = 44.0	
	226 Buyende	327 Napak	426 Sheema		12.0 = 19.2		28.0 = 44.8	
	227 Kibuku	328 Nwoya 329 Otuke			12.5 = 20.0		28.5 = 45.6	
	228 Kween	330 Zombo			13.0 = 20.8		29.0 = 46.4	
	229 Luuka				13.5 = 21.6		29.5 = 47.2	
	230 Namayingo				14.0 = 22.4		30.0 = 48.0	
	231 Ngora				14.5 = 23.2		30.5 = 48.8	
	232 Serere				15.0 = 24.0		31.0 = 49.6	
					15.5 = 24.8		31.5 = 50.4	
					16.0 = 25.6		32.0 = 51.2	

Uganda Bureau of Statistics  
Statistics House Plot 9, Colville Street,  
P.O. Box 7186, Kampala – Uganda  
Tel: +256-414-706000, Fax +256-414- 237553  
Email: [ubos@ubos.org](mailto:ubos@ubos.org), Website: [www.ubos.org](http://www.ubos.org)