



National Population and Housing Census 2014

Area Specific Profiles



Tororo District

April 2017

This report presents findings of National Population and Housing Census (NPHC) 2014 undertaken by the Uganda Bureau of Statistics (UBOS). Additional information about the Census may be obtained from the UBOS Head Office, Statistics House, Plot 9 Colville Street, P. O. Box 7186, Kampala, Uganda; Telephone: +256-414 706000 Fax: +256-414 237553; E-mail: ubos@ubos.org; Website: www.ubos.org

Cover Photos: Uganda Bureau of Statistics

Recommended Citation

Uganda Bureau of Statistics 2017, The National Population and Housing Census 2014 – Area Specific Profile Series, Kampala, Uganda.

FOREWORD

Demographic and socio-economic data are useful for planning and evidence-based decision making in any country. Such data are collected through Population Censuses, Demographic and Socio-economic Surveys, Civil Registration Systems and other Administrative sources. In Uganda, however, the Population and Housing Census remains the main source of demographic data, especially at the sub-national level.

Population Census taking in Uganda dates back to 1911 and since then the country has undertaken five such Censuses. The most recent, the National Population and Housing Census 2014, was undertaken under the theme 'Counting for Planning and Improved Service Delivery'. The enumeration for the 2014 Census was conducted in August/September 2014. The Uganda Bureau of Statistics (UBOS) worked closely with different Government Ministries, Departments and Agencies (MDAs) as well as Local Governments (LGs) to undertake the census exercise.

The 2014 Census provides several statistics on different aspects of the population. These include the population size and distribution which is a key indicator used for resource allocation, measurement of the extent of service delivery, decision making and budgeting among others. Other information includes the characteristics of the population, those of the dwellings they live in and information on the Household based Agricultural activities.

On behalf of the Bureau, I would like to appreciate the Government of Uganda for providing the necessary resources and infrastructure for undertaking the National Population and Housing Census (NPHC) 2014. In addition, the Bureau would like to thank the Development Partners, particularly United Kingdom Aid (UKAid), the United Nations Fund for Population Activities (UNFPA) and the United Nations Children's Fund (UNICEF) for providing technical and financial support towards the Census. The Bureau would also like to thank the Media for creating awareness about the Census 2014 and, most importantly, the individual households who voluntarily provided the required information.

Together We Count



Ben Paul Mungyereza
EXECUTIVE DIRECTOR

PREFACE

The Uganda Bureau of Statistics Act No. 12 of 1998 provides for the Minister responsible for Planning to direct ‘that a Census be taken’ on any matter specified in the Act. This was the legal basis for conducting the National Population and Housing Census (NPHC) 2014. The long-term objective of the NPHC 2014 is to ensure availability of bench-mark demographic and socio-economic data for use in planning, evidence based decision making, policy formulation and programme evaluation.

In order to support the planning process, the results from the Census 2014 are being released in phases as and when they become available. The Provisional Results Report was released in November, 2014 followed by the Final Results which were released in March 2016 and the Sub-county Reports in June 2016. These reports collectively provided information on the characteristics of the population and households at the national, district and sub-county levels.

The **Constituency Profiles Series** presents the characteristics of the population and household as well as the housing conditions of the population in each parliamentary constituency of the district. For convenience, however, the profiles of all constituencies in one district have been published in one report. In each report, the Appendix has selected national level tables for reference.

Uganda Bureau of Statistics (UBOS) is in the process of producing several other reports including the National Analytical Results (Monograph Series), District-level Analytical Reports and the Census Atlas. These will present detailed findings covering more indicators on different thematic areas. In addition to the above reports, the Bureau will be providing electronic datasets to facilitate deeper analysis of the data.

The Bureau, appeals to Policy Makers, Researchers and Academicians to make extensive use of this information for policy analysis and evidence-based decision-making at different levels of service delivery. Together we can harness information resources from the Census to improve service delivery and create a better Uganda.

ABOUT THE INDICATORS

Household

A group of persons who usually eat and live together. A household may be comprised of one or more persons provided they share the same meal and sleep under the same roof. The persons may be related usually in a family setting or may not be related.

Household population

All those persons who were enumerated in households. It excludes population which was enumerated on the streets (floating population) or those who were living in Institutions such as correction centres, religious institutions and health facility in-patients.

Population size

Refers to the total population count in the country or any geographical location based on the census reference night. It includes all those persons who were enumerated in households and institutions.

Population by age groups or specific age

This is the total count of the household population by a given age, age- groups or special age-groups. It excludes the non-household population.

Education characteristics/indicators

The indicators refer to specific age groups. The official school going age is 6-12 years for primary education, 13-18 years for secondary education and 19-24 years for tertiary education. However, the analysis includes the age-group 6-15 years to take into consideration those who start primary level at more than 6 years.

For those who have never been to school, we consider the age group 15 years and above on the assumption that by age 15, there are minimal chances for one joining school for the first time.

Illiteracy

This is defined as lack of the ability to read and write with understanding in any language. Persons aged 10 years and above who could not read and write responded (Codes 2, 3 and 4) to Question P21 of the Household Questionnaire. The objective of using this indicator is to shed light on the areas that need improvements in the delivery of the services.

Ownership of a birth certificate

Ownership includes all those persons (adults or children) who either had a Short Birth Certificate or a Long Birth Certificate during census enumeration. The analysis is based on specific age categories.

Parental survival and Orphanhood

Parental survival and orphanhood are derived variables which are based on two questions (P10 and P11), whether or not the biological mother/father of the respondent was still alive at the time of the census. Orphans are persons below the age of 18 who have lost any or both of their parents.

Disability

The questions P14 to P17 on functional difficulty are used to determine whether the person has a disability or not. It includes all persons aged 2 years and above. An individual is considered to be disabled if he/she has any one of the 4 questions with at least some difficulty.

Multiple disabilities refer to all persons who reported more than one functional difficulty.

Marriage and Child Bearing

Marital Status refers to all those persons who are living together and consider themselves as married. It includes all forms of consensual union whether legal or non-legal, religious or cultural or non-consensual union.

Employment

Questions on employment were eligible for all household population aged 10 years and above. Currently the age category for the working population 16 -64 years. The analysis is based on specific age groups of children 10-15 years, (other countries define a child as anyone below the age of 16, hence the age group 10-15 years).

Construction materials of the dwelling

The information is derived from the question on “materials used for the roof, floor and wall. Permanent floor materials include concrete, cement screed, tiles, wood, while permanent roof materials include roof tiles, iron sheets, asbestos and concrete.

Status of dwelling

The permanency nature of construction materials determines the status of the dwelling. The idea is to be able to classify a dwelling unit as temporary or permanent.

Access to community services

The choice of indicators is for those households that are beyond the 5 km radius for access to services (access to public/private schools, health facilities and a police station/post). The nearness of the service to the household does not take into consideration whether the services are utilized by the household or not.

Other environmental conditions – waste disposal

Any household was considered to have proper waste disposal if at the time of the census it disposed off solid waste using registered or unregistered waste vendors as well as using skip bins provided by the Municipal authority.

Owner occupied dwellings

These are disaggregated by household headship. The percentages for male and female headed households may not add up to 100. For instance among the female headed households, what proportion are owner occupied? Among the male headed households, what proportion are owner occupied?

Source of energy for lighting – electricity

In the household questionnaire, Question H14 had about four forms of electricity used for lighting (grid, generator, solar, community/thermal plant). Any household that indicated using any of the four forms was considered to have access to electricity.

Household based agricultural activities

A household engaged in agriculture is one which is engaged in any of the following:

Growing of any crops, or rearing animals or involved in bee keeping or forestry/tree growing, and any fish farming. Agricultural activities outside the district were not considered.

TABLE OF CONTENTS

FOREWORD	i
PREFACE.....	ii
ABOUT THE INDICATORS	iii
INTRODUCTION	1
1.1 General Information about Uganda	1
1.2 About the National Population and Housing Census 2014	1
1.3 National Highlights of the 2014 Census Results.....	2
AREA SPECIFIC PROFILES.....	17
TORORO DISTRICT	18
TORORO MUNICIPALITY CONSTITUENCY	27
TORORO NORTH COUNTY CONSTITUENCY	36
TORORO SOUTH COUNTY CONSTITUENCY	45
WEST BUDAMA COUNTY NORTHCONSTITUENCY	54
WEST BUDAMA COUNTY SOUTH CONSTITUENCY.....	63
APPENDICES	72
Appendix 1: Population by Sex and Type of Residence by District, Uganda 2014	73
Appendix 2: The Household Questionnaire for the National Population and Housing Census 2014.....	76

LIST OF MAPS

- Map 1: Districts of Uganda as of 1st July 2016
- Map 2: Rubanda District Parliamentary Constituencies as of 1st July, 2016
- Map 3: Distribution of Population by Sub-county; Rubanda District, 2014
- Map 4: Percentage Distribution of Population Aged 6-12 Years Not in School; Rubanda District, 2014
- Map 5: Percentage Distribution of Youth Population aged 18-30 Years, Not in School and not working; Rubanda District, 2014
- Map 6: Percentage Distribution of Population aged 10-19 Years, Ever Married; Rubanda District, 2014
- Map 7: Percentage Distribution of Orphans aged 0-17 Years; Rubanda District, 2014
- Map 8: Percentage Distribution of Households within 5 Km and Over to the nearest Public Health Facility; Rubanda District, 2014
- Map 9: Percentage Distribution of Households without access to Safe Water; Rubanda District, 2014
- Map 10: Percentage Distribution of Households with no Toilet facility; Rubanda District, 2014
- Map 11: Percentage Distribution of Households having less than 2 meals a day; Rubanda District, 2014

INTRODUCTION

1.1 General Information about Uganda

Location and Size

Uganda is located in East Africa and lies across the equator, about 800 kilometres inland from the Indian Ocean. It lies between Latitude 1° 29' South and 4° 12' North of the Equator as well as Longitude 29° 34' East and 35° 0' East of Greenwich. The country is landlocked, bordered by Kenya in the East; South Sudan in the North; Democratic Republic of Congo in the West; Tanzania in the South; and Rwanda in South West. It has a total area of 241,551 square kilometres, of which the land area covers 200,523 square kilometres.

Administration

The country was divided into 116 districts (as at August/September 2014). The districts were further subdivided into 200 Counties, 1,378 Sub-counties and 6,495 Parishes. The role of these administrative units is to implement and monitor government programmes at the respective levels. Overtime, the administrative units have been sub-divided with the aim of easing administration and improving the delivery of services.

1.2 About the National Population and Housing Census 2014

The overall objective of the National Population and Housing Census (NPHC) 2014 was to provide data that are required for planning at all levels. The NPHC 2014 had three distinct phases namely, the Preparatory Phases, the Enumeration Phase and the Post Enumeration Phase.

The preparatory work for the Census 2014 started in 2008 with development of the overall strategy of undertaking the census. Other preparatory activities included development of the questionnaires, undertaking of the census mapping, conducting the Pilot Census, carrying out the census advocacy and publicity and other administrative support services.

The enumeration phase included recruitment and training of field staff, delivery of enumeration materials, conducting the main census enumeration and retrieval of materials. The census activities in the district were conducted under the overall responsibility of the Chief Administrative Officers (CAOs) or the Executive Director in the case of Kampala Capital City Authority (KCCA). All field staff underwent mandatory ten (10) day training on Census concepts and procedures.

The Census Reference Night was the night of 27th August 2014 and the enumeration was conducted on a de facto basis. The enumeration started on 28th August and continued to 7th September 2014. The Enumerators moved from household to household within the assigned Enumeration Areas (EAs) and administered the Census questionnaire to the Head of household or any other assigned household member through face to face interviews.

The data processing was centrally managed at the Bureau offices. The filled questionnaires were captured with scanning technology and the information extracted using automatic character recognition.

Data quality assurance enhances credibility, usability and utility of data. The Post Enumeration Survey (PES) was used as one of the tools to evaluate the quality of the census data through testing the completeness of coverage and accuracy. The PES enumeration was undertaken in October/November 2014, and it covered 800 EAs distributed in all the districts and Kampala Capital City Authority (KCCA).

1.3 National Highlights of the 2014 Census Results

The results of the NPHC 2014 will be published in phases. The Provisional Census Results were disseminated in November 2014. These gave the number of households and the population by sex for administrative areas down to sub-county level. The first set of the final results of the Census 2014 were published in the Main Report which was released in March 2016. The report includes information on the population size and distribution as well as characteristics of the population and the dwellings they live in. The results showed that the total population of Uganda in 2014 was 34.6 million persons as shown in Table 1.

Between 2002 and 2014, the population increased from 24.2 million to 34.6million. This implied average growth rate of 3.0 percent per annum.

Table 1: Population size and Population Growth Rates, Uganda, 1969-2014

Census year	Male	Female	Total	Inter-censal Period	Average Annual Growth Rate (%)
1969	4,812,447	4,722,604	9,535,051		
1980	6,259,837	6,376,342	12,636,179	1969-1980	2.7
1991	8,185,747	8,485,558	16,671,705	1980-1991	2.5
2002	11,824,273	12,403,024	24,227,297	1991-2002	3.2
2014	17,060,832	17,573,818	34,634,650	2002-2014	3.0

The distribution of the population among the districts is given in Appendix Table 1. Wakiso district had a population of nearly two (2) million, accounting for about six percent of the total population, while some districts were less populous, Kalangala district being the smallest with a population of 53,406 persons. As of 2016, Uganda had a total of 259 urban centres with a total urban population of 7.5 million persons. Thus, 20.2 percent of the total population lived in urban areas. Kampala Capital City was the most populous urban centre with 1.5 million persons.

Table 2 gives the distribution of the population by age. The Table shows that the population of Uganda is quite young, with the proportion of children (below 15 years of age) being 47.9 percent, while the 'Older persons' (aged 60 years and above) constituted only 2.9 percent.

Table 2: Population Distribution by Age, Sex, Residence, and Population Type, Uganda, 2014

Age	Sex		Residence		Population Type		Total
	Male	Female	Rural	Urban	Household	Institutional	
0-4	3,173,950	2,957,078	4,950,513	1,180,515	6,107,155	23,873	6,131,028
5-9	2,834,456	2,717,222	4,557,328	994,350	5,532,230	19,448	5,551,678
10-14	2,462,789	2,457,654	4,024,478	895,965	4,850,926	69,517	4,920,443
15-19	1,917,797	2,038,836	3,052,854	903,779	3,850,134	106,499	3,956,633
20-24	1,442,455	1,743,137	2,263,734	921,858	3,093,846	91,746	3,185,592
25-29	1,143,467	1,342,709	1,743,019	743,157	2,434,180	51,996	2,486,176
30-34	908,447	1,043,292	1,429,283	522,456	1,914,351	37,388	1,951,739
35-39	726,355	809,482	1,148,883	386,954	1,512,237	23,600	1,535,837
40-44	617,034	655,383	991,874	280,543	1,252,338	20,079	1,272,417
45-49	452,081	469,043	728,958	192,166	909,783	11,341	921,124
50-54	371,126	436,977	657,004	151,099	797,368	10,735	808,103
55-59	224,765	255,519	394,952	85,332	475,744	4,540	480,284
60-64	195,283	244,770	369,504	70,549	434,218	5,835	440,053
65-69	136,107	165,043	257,208	43,942	299,351	1,799	301,150
70-74	115,862	161,374	237,097	40,139	273,582	3,654	277,236
75-79	69,095	81,378	128,636	21,837	149,567	906	150,473
80-84	51,871	79,398	110,736	20,533	127,984	3,285	131,269
85-89	21,572	30,204	43,246	8,530	50,735	1,041	51,776
90-94	15,125	22,046	29,989	7,182	34,339	2,832	37,171
95 and above	18,212	26,256	37,186	7,282	41,231	3,237	44,468
Total	16,897,849	17,736,801	27,156,482	7,478,168	34,141,299	493,351	34,634,650

Characteristics of the Households

The household population consisted of (99 percent of the total population.) The Census 2014 enumerated a total of 7.3 million households with a population of 34.1 million. This gave an Average Household Size of 4.7.

The 'Tadooba' remained the most common source of lighting being used by 52 percent of the households. Only one in every five households (20%) had access to electricity. On the other hand, Wood fuel was the most common fuel used for cooking, with only six percent (one in every 16) of the households using other fuels. Sanitation remains a challenge with only thirty percent of the households with unimproved toilet facilities. About 600,000 households did not have any toilet facility at all.

The majority of the households (69 percent) derived their livelihood from subsistence farming. Only 27% of the households depended on earned income. One in every nine households (11%) were having only one meal per day (for adults). Some of the households (11%) received remittances from abroad in cash or in kind. More than two thirds of the households (69%) had at least one member owning a Mobile phone. Ownership of a Mobile among persons aged 10 years and above was at 38 percent. The radio remains a dominant source of information and about 60 percent of the households owned a radio.

Housing Conditions

The housing sector recorded a general improvement. Overall, 67 percent of households in Uganda resided in detached dwellings. However, nearly half (47%) households resided in dwellings with only one room for sleeping. There was also significant improvement in the materials used for construction of the dwellings. About 44% of the households resided in dwellings constructed with permanent wall material. The equivalent shares for roof and floor were 70 and 34 percent respectively.

Agricultural Activities

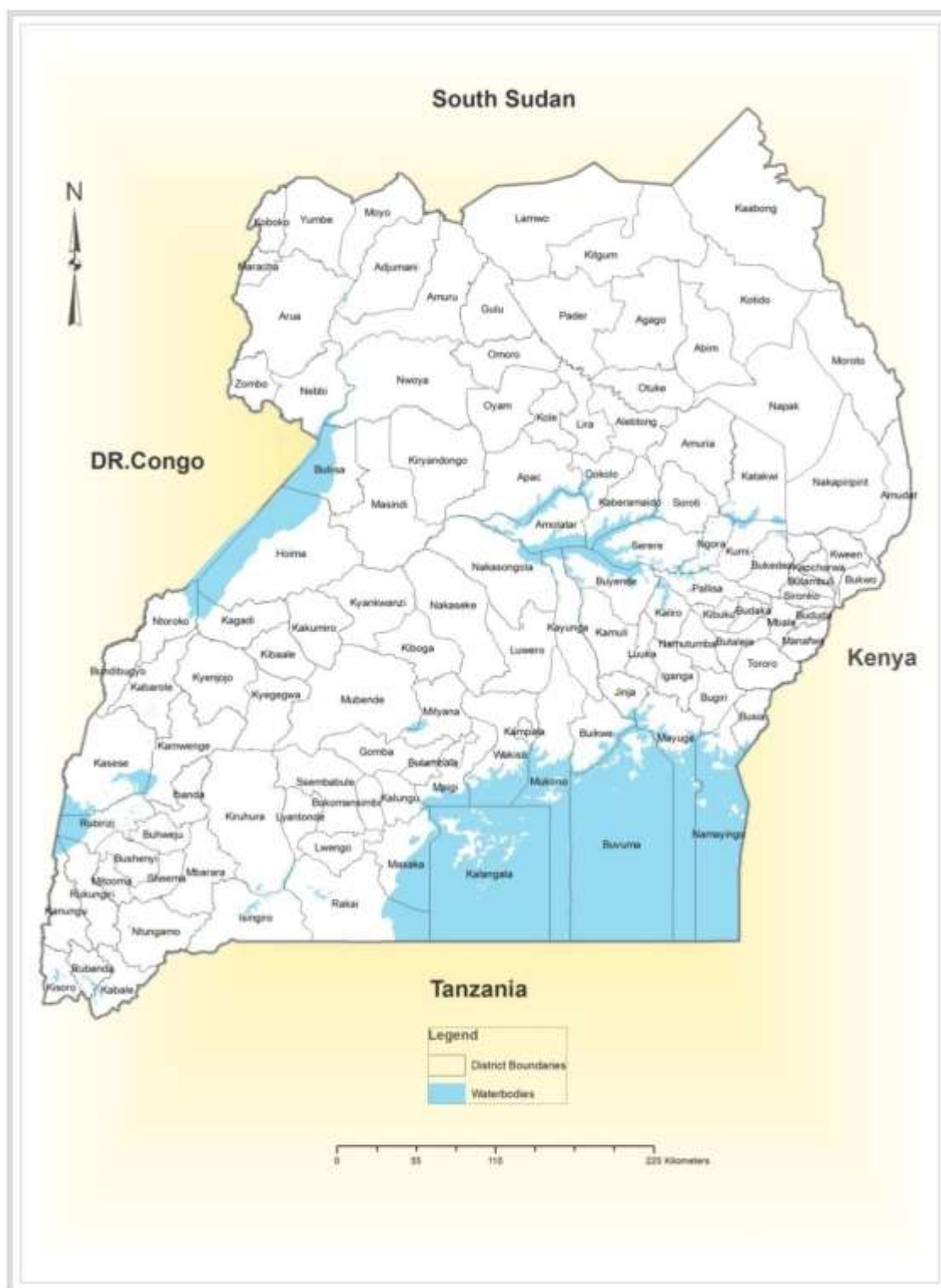
Agriculture has remained a dominant sector in the economy. The Census revealed that a total of 5.8 million households engage in agriculture. More than two thirds (69 percent) of households derived their livelihoods from subsistence farming as the main source of earning. In terms of employment, the majority of the working population (65 percent) were subsistence farmers.

POPULATION SIZE

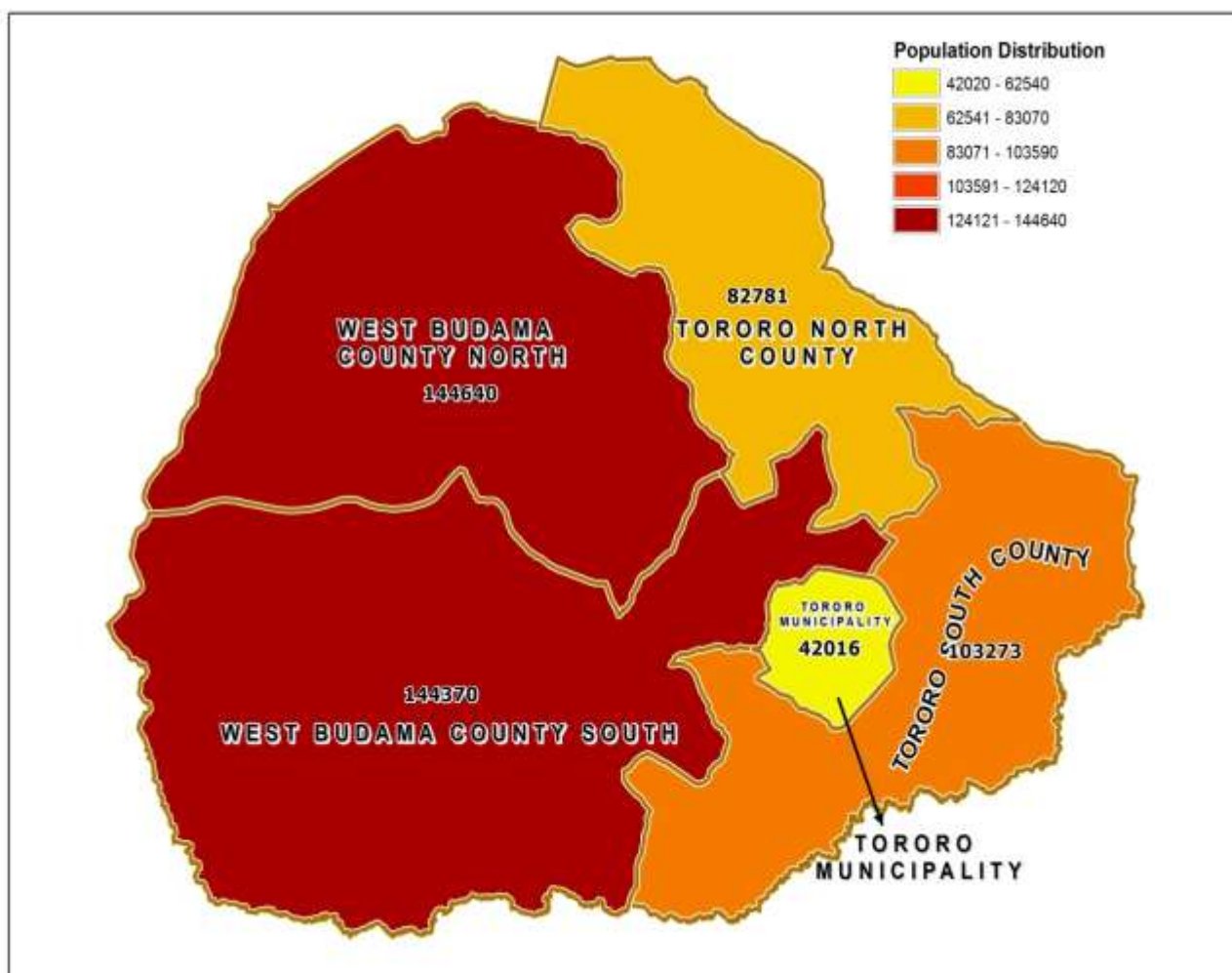
Table 3: Total population by age group and sex, Tororo District, 2014

Age group	Male	Female	Total
0-9	90,114	85,613	175,727
10-19	69,033	70,864	139,897
20-39	54,150	65,281	119,431
40-59	26,374	30,336	56,710
60+	11,159	14,156	25,315
District	250,830	266,250	517,080

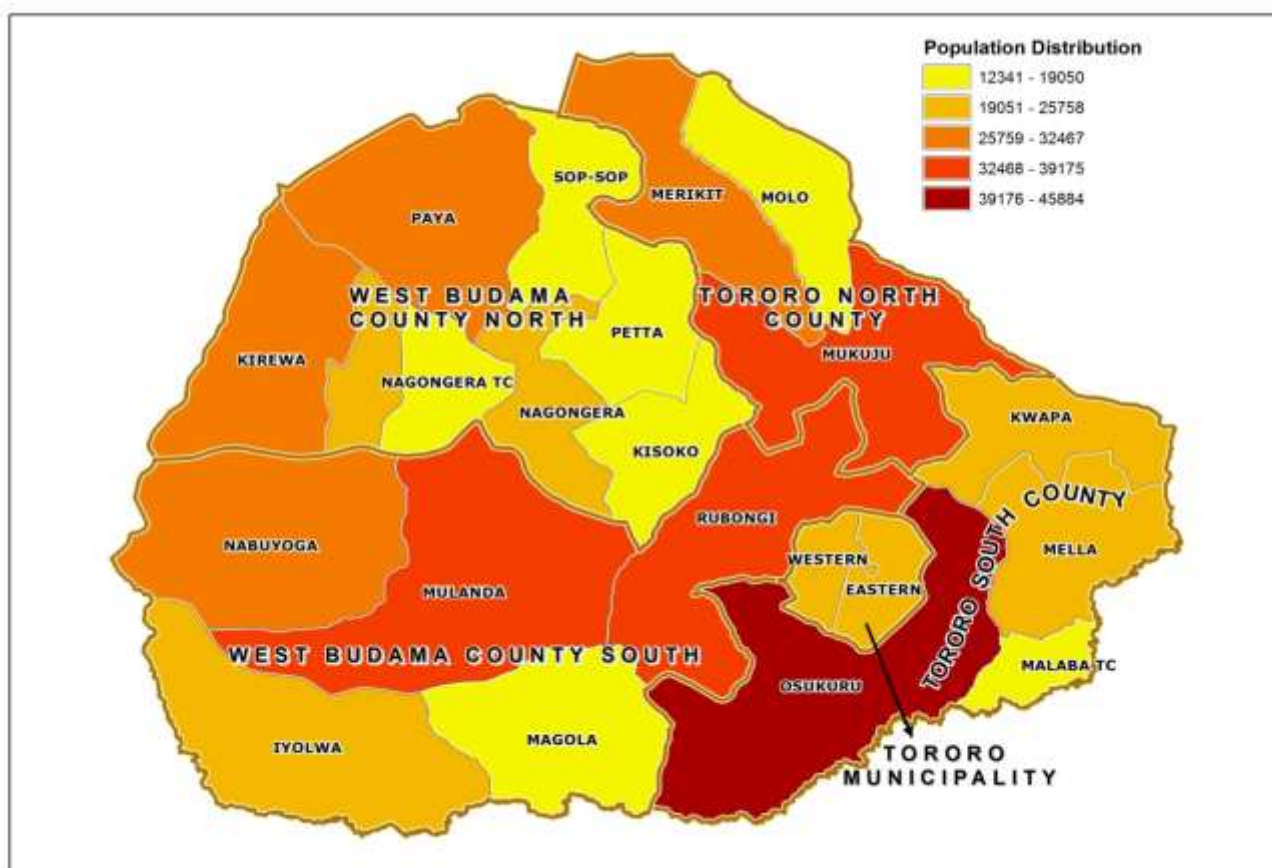
Map 1: Districts of Uganda as of 1st July 2016



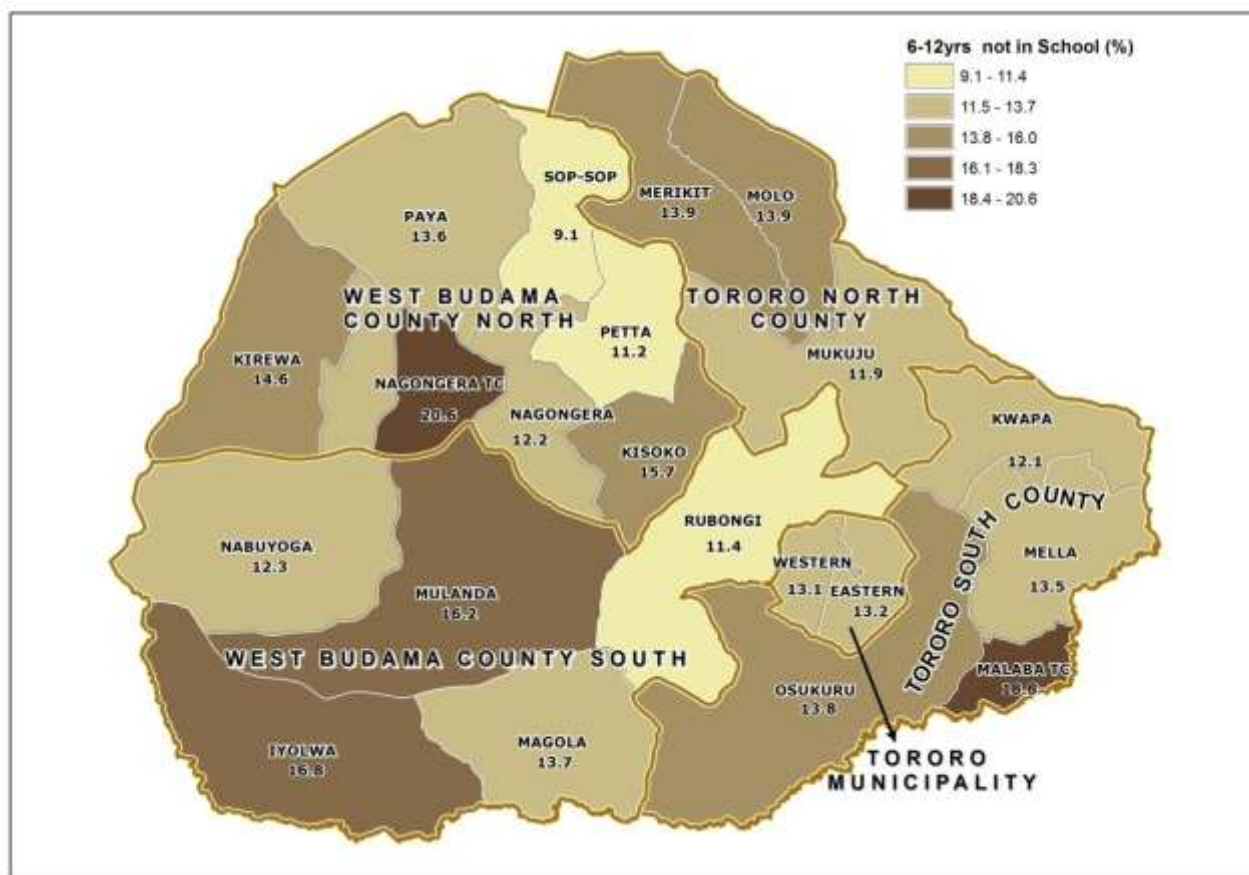
Map 2: Tororo District Parliamentary Constituencies as of 1st July, 2014



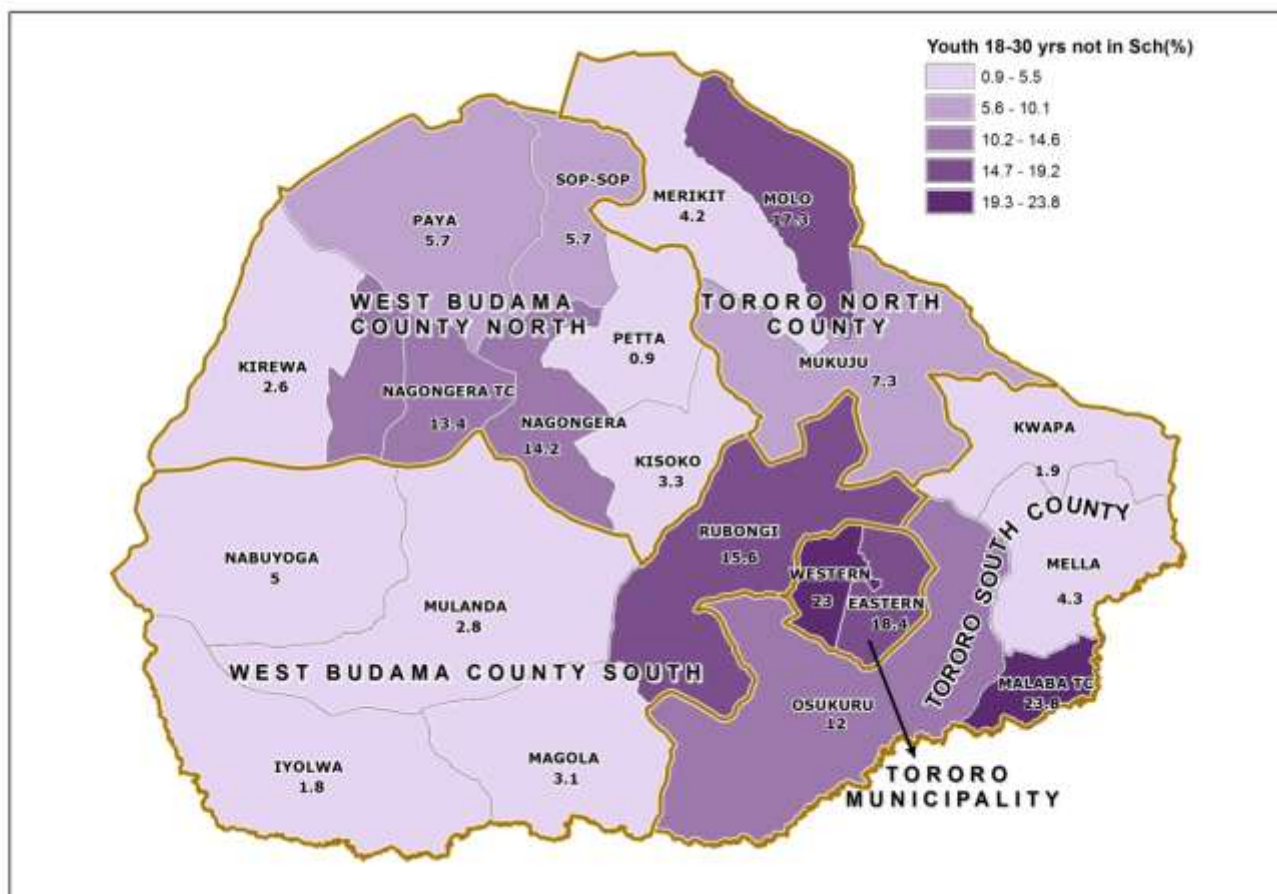
Map 3: Distribution of Population by Sub-county; Tororo District, 2014



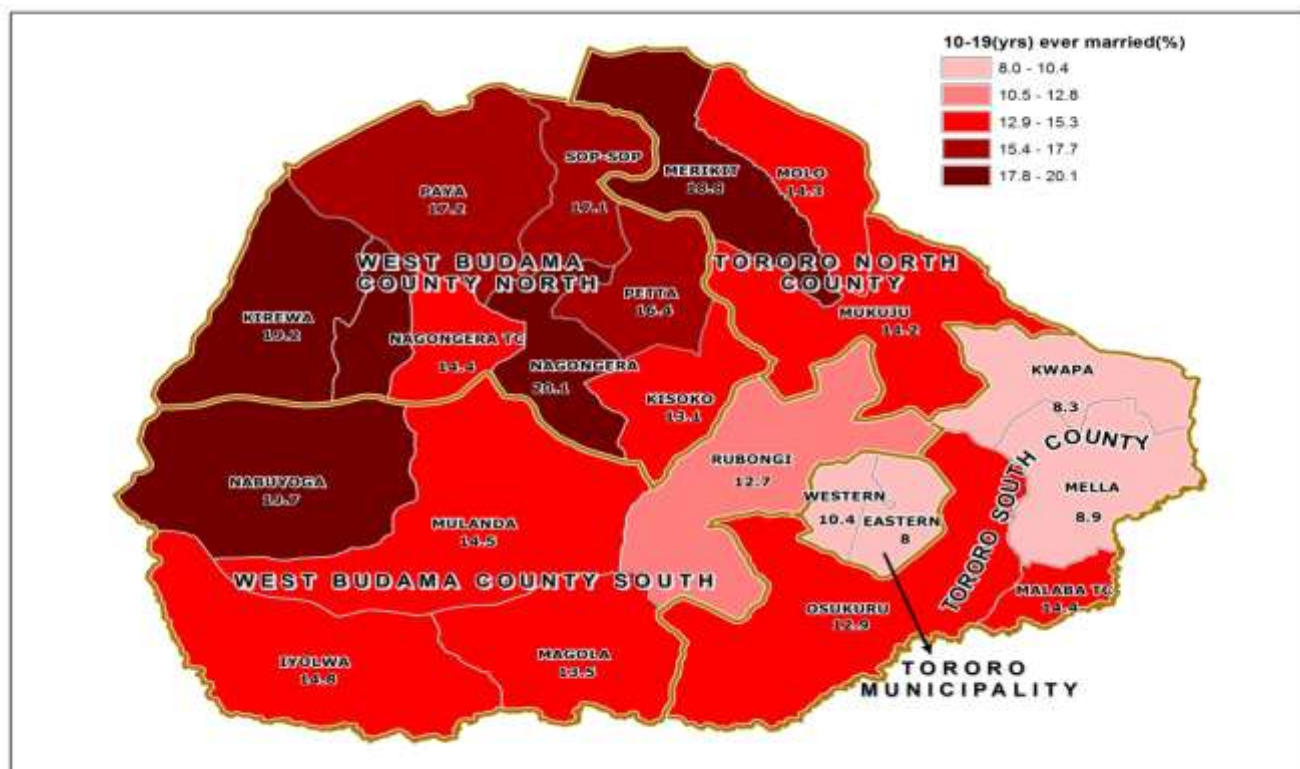
Map 4: Percentage Distribution of Population Aged 6-12 Years Not In School; Tororo District, 2014



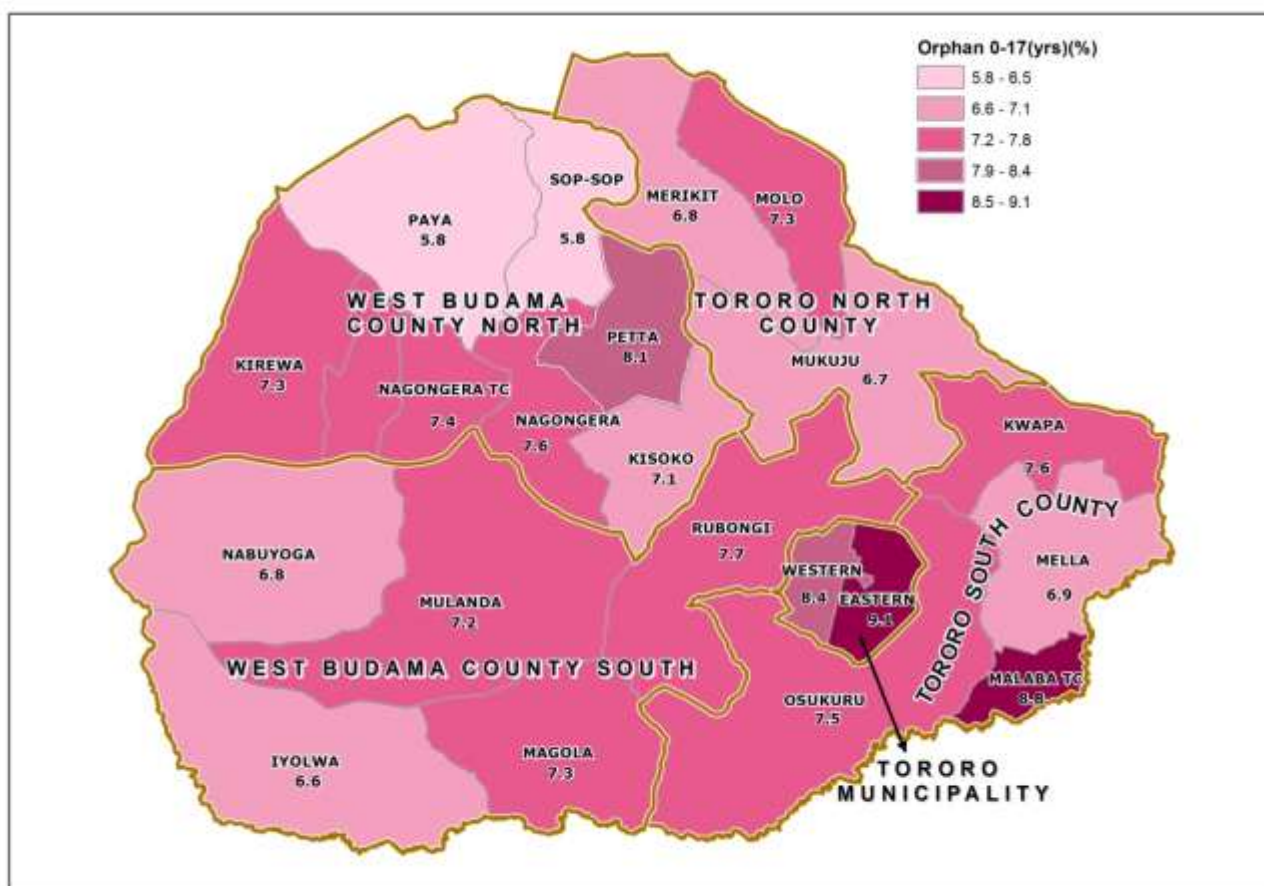
Map 5: Percentage Distribution of Youth Population aged 18-30 Years, Not In School and Not working; Tororo District, 2014



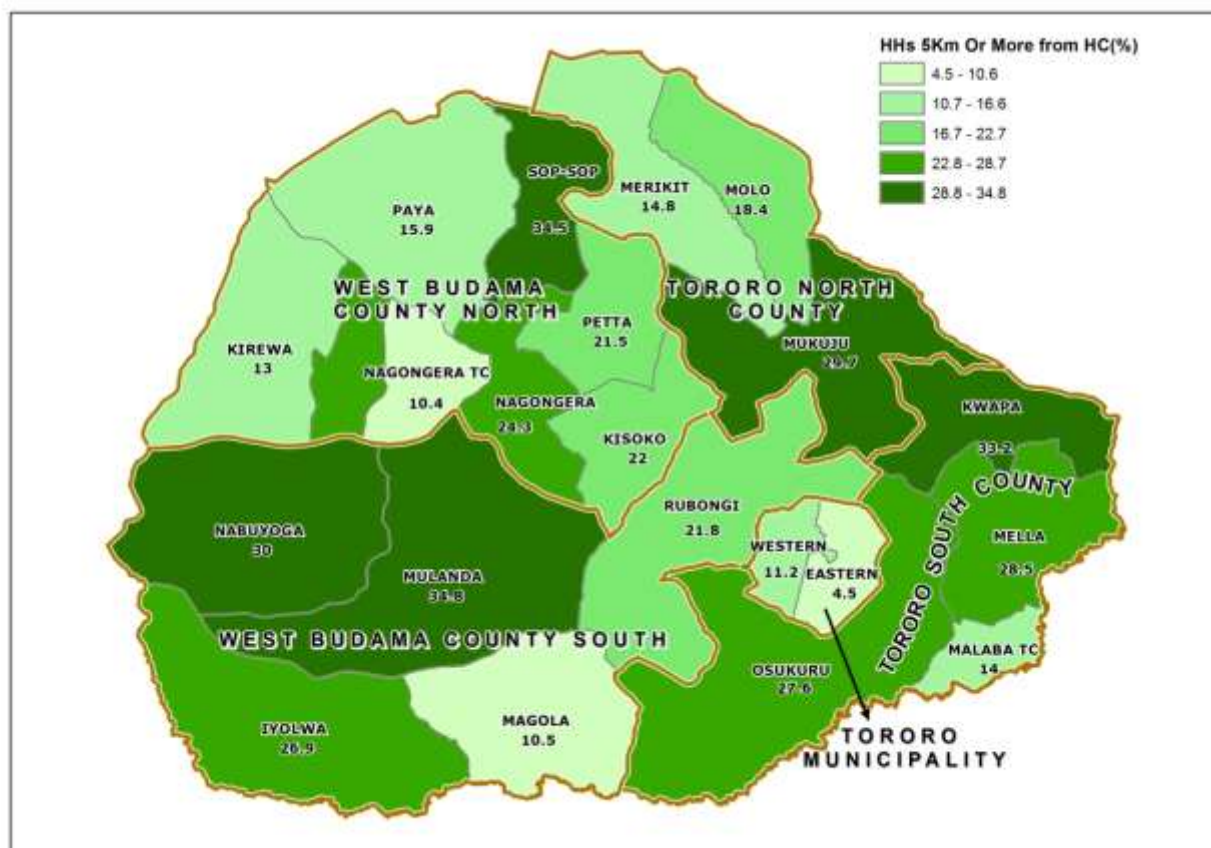
Map 6: Percentage Distribution of Population aged 10-19 Years, Ever Married; Tororo District, 2014



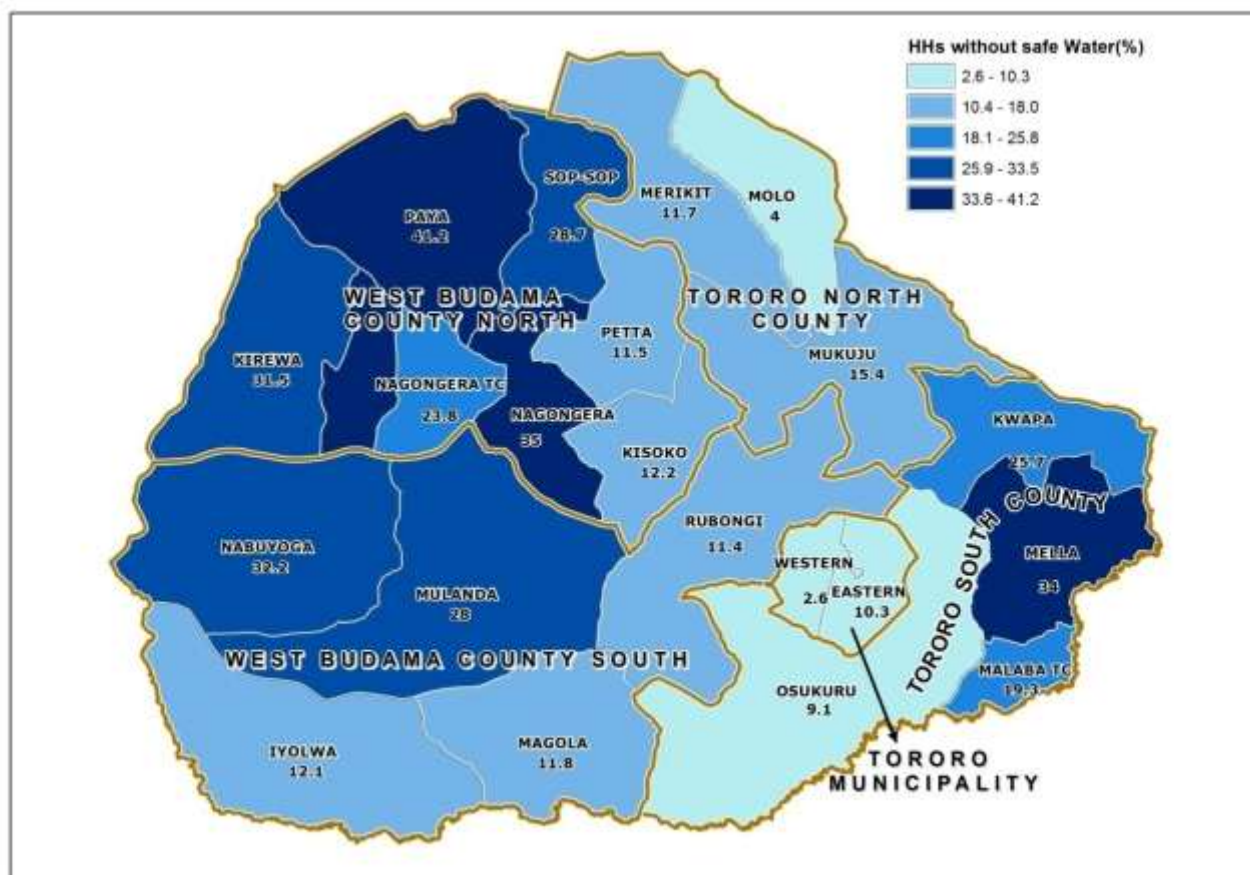
Map 7: Percentage Distribution of Orphans aged 0-17 Years; Tororo District, 2014



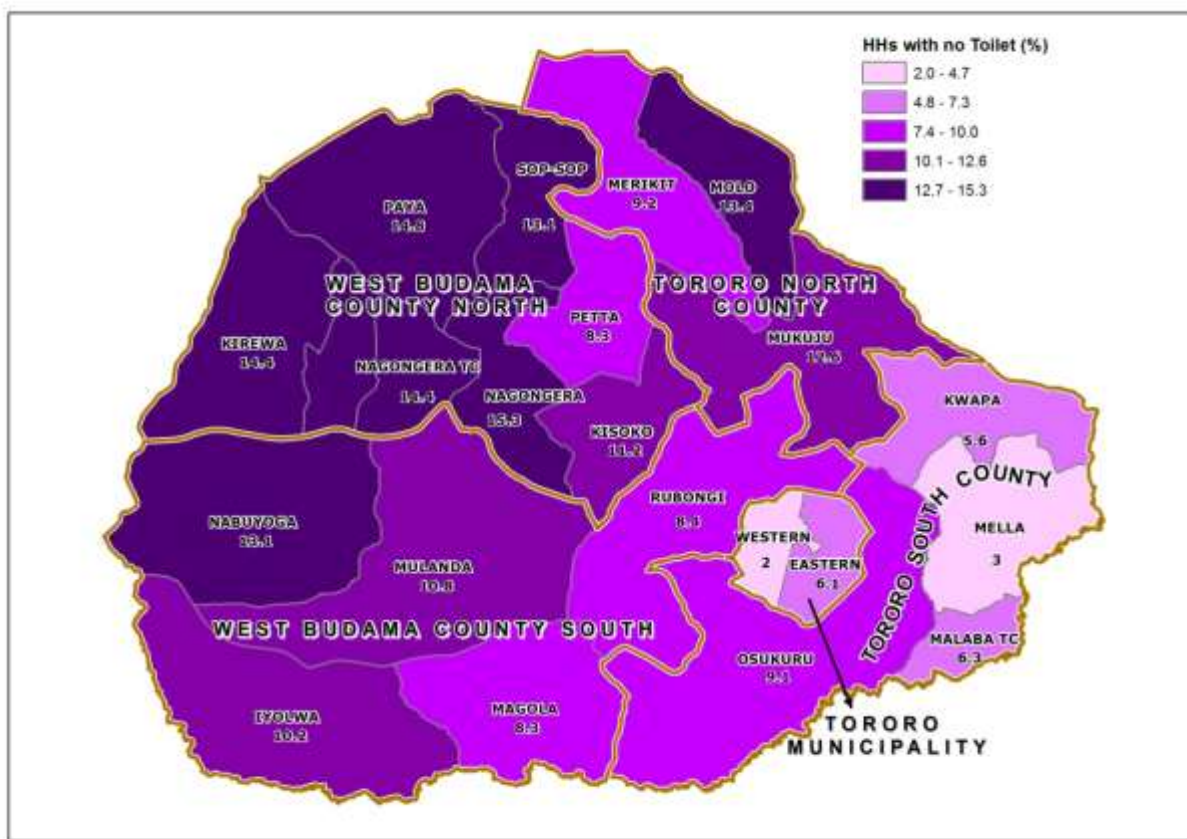
**Map 8: Percentage Distribution of Households 5 Km and over, to the nearest Public Health Facility;
Tororo District, 2014**



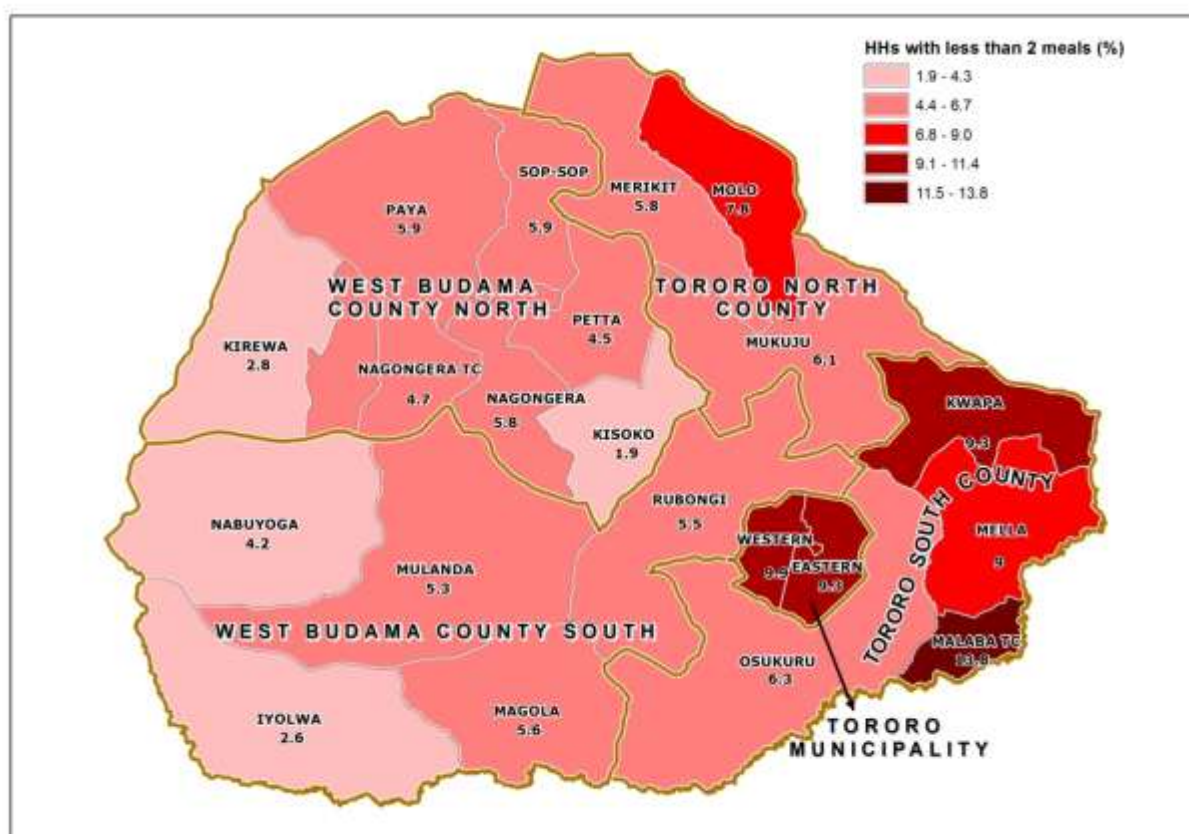
Map 9: Percentage Distribution of Households without access to Safe Water; Tororo District, 2014



Map 10: Percentage Distribution of Households with no Toilet facility; Tororo District, 2014



Map 11: Percentage Distribution of Households having less than 2 meals a day; Tororo District, 2014



AREA SPECIFIC PROFILES

TORORO DISTRICT

LIST OF TABLES

- 1 Population
- 2 Education
- 3 Illiteracy status
- 4 Ownership of a Birth Certificate
- 5 Parental Survival and Orphan hood
- 6 Disability
- 7 Marriage and Child Bearing
- 8 Working Status
- 9 Use of ICT
- 10 Housing Conditions
- 11 Access to Community Services
- 12 Household Health and Hygiene
- 13 Household Assets
- 14 Other Household Characteristics
- 15 Household Based Agricultural Activities

1: POPULATION

1.1: Population Size	Number	Percent
Total population	517,080	
Total male population	250,830	48.5
Total female population	266,250	51.5
Sex ratio (males per 100 females)	94.2	
1.2: Households	Number	Percent
Total households	102,492	
Households headed by males	79,568	77.6
Households headed by females	22,924	22.4
Households headed by children (aged 10-17 years)	351	0.3
Households headed by youth (aged 18-30 years)	23,395	22.8
Households headed by older persons (aged 60 years and above)	18,579	18.1
1.3: Population by Age groups	Number	Percent
Population aged 0-17 years	291,043	56.8
Population aged 18-30 years	101,178	19.7
Population aged 31-59 years	95,279	18.6
Population aged 60 years and over	24,972	4.9
1.4: Population by Special Age groups	Number	Percent
Population aged Less than one Year	19,261	3.8
Population aged 0-4 Years	91,269	17.8
Population aged 0-8 Years	159,573	31.1
Population aged 2-8 Years	122,289	23.9
Population aged 2-17 Years	253,759	49.5
Population aged 6-12 Years	114,302	22.3
Population aged 6-15 Years	158,072	30.8
Population aged 10-15 Years	90,775	17.7
Population aged 10-17 Years	115,623	22.6
Population aged 15-24 Years	103,690	20.2
Population aged 16-64 Years	229,064	44.7
Population aged 15-29 Years	132,808	25.9
Population aged 2 Years and Over	475,188	92.7
Population aged 10 Years and Over	337,052	65.8
Population aged 15 Years and Over	259,508	50.6
Population aged 18 Years and Over	221,429	43.2
Population aged 20 Years and Over	198,715	38.8
Population aged 65 Years and over	17,213	3.4

2: EDUCATION

2.1: Non School attendance of	Number	Percent
Persons aged 6-15 years not attending school	13,668	8.6
Males aged 6-15 years not attending school	6,746	8.5
Females aged 6-15 years not attending school	6,922	8.8
2.2: Persons attending Primary school	Number	Percent
Persons aged 6-12 years attending primary school	98,937	86.6
Males aged 6-12 years attending primary school	49,331	86.0
Females aged 6-12 years attending primary school	49,606	87.1
2.3: Persons attending Secondary school	Number	Percent
Persons aged 13-18 years attending secondary school	25,003	30.8
Males aged 13-18 years attending secondary school	13,672	34.0
Females aged 13-18 years attending secondary school	11,331	27.7
2.4: Persons not in School and Highest Level Completed is below S.4	Number	Percent
Persons aged 15 years and above whose highest level of education completed is below S.4	139,083	83.6
Males aged 15 years and above whose highest level of education completed is below S.4	61,795	78.9
Females aged 15 years and above whose highest level of education completed is below S.4	77,288	87.7
2.5: Persons not in School and Highest Level Completed is "O" Level	Number	Percent
Persons aged 18 years and above whose highest level of education completed is "O" level (S.4)	13,168	5.9
Males aged 18 years and above whose highest level of education completed is "O" level (S.4)	7,811	7.8
Females aged 18 years and above whose highest level of education completed is "O" level (S.4)	5,357	4.4
2.6: Persons not in School and Highest Level Completed is "A" Level	Number	Percent
Persons aged 20 years and above whose highest level of education completed is "A" level (S.6)	3,572	1.8
Males aged 20 years and above whose highest level of education completed is "A" level (S.6)	2,472	2.8
Females aged 20 years and above whose highest level of education completed is "A" level (S.6)	1,100	1.0

3: ILLITERACY STATUS

3.1: Persons aged 18 years and above	Number	Percent
Persons aged 18 years and above who are illiterate	89,470	40.4
Males aged 18 years and above who are illiterate	29,584	29.5
Females aged 18 years and above who are illiterate	59,886	49.5
3.2: Other age groups	Number	Percent
Persons aged 10-17 years who are illiterate	35,940	31.1
Persons aged 18-30 years who are illiterate	26,010	25.7
Persons aged 60 years and above who are illiterate	16,943	67.8

4: OWNERSHIP OF A BIRTH CERTIFICATE

4.1: Children with birth certificates	Number	Percent
Children less than 1 year who have a birth certificate	4,513	23.4
Children less than 5 years who have a birth certificate	28,994	31.8
Children 0-8 years who have a birth certificate	57,373	36.0
Children 0-17 years who have a birth certificate	113,848	40.8

5: PARENTAL SURVIVAL AND ORPHANHOOD

5.1: Children 0-8 years	Number	Percent
Children 0-8 years who have lost one parent	5,287	3.3
Children 0-8 years who have lost both parents	382	0.2
Children 0-8 years who have lost at least a parent (total number of orphans)	5,669	3.6
Children 0-8 years who have both parents	153,904	96.4
5.2: All children (0-17 years)	Number	Percent
Children 0-17 years who have lost one parent	19,005	6.5
Children 0-17 years who have lost both parents	2,082	0.7
Children 0-17 years who have lost at least a parent (total number of orphans)	21,087	7.2
Children 0-17 years who have both parents	269,956	92.8

6: DISABILITY

6.1: Persons with a disability	Number	Percent
Persons aged 2 years and above with a disability	70,258	14.8
Persons aged 2 years and above with a seeing disability	34,509	7.3
Persons aged 2 years and above with a hearing disability	20,379	4.3
Persons aged 2 years and above with a walking disability	23,231	4.9
Persons aged 2 years and above with a remembering disability	31,224	6.6
Persons aged 2 years and above with multiple disabilities	21,638	32.0
Children aged 2-17 years with a disability	19,028	7.5
Youth aged 18-30 years with a disability	11,170	11.0
Older persons aged 60 years and above with a disability	15,038	60.2

7: MARRIAGE AND CHILDBEARING

7.1: Marital status of the population	Number	Percent
Persons aged 10 years and above who are married	90,040	50.3
Persons aged 18 years and above who are married	85,818	70.9
Females aged 50 years and above who are widowed	9,818	38.1
Females aged 10-17 years who have ever been married	4,551	7.8
Females aged 10-19 years who have ever been married	10,155	14.5
7.2: Females who have had a birth	Number	Percent
Females aged 12-17 years who have given birth	4,048	9.6
Females aged 12-19 years who have given birth	8,942	16.5

8: WORKING STATUS

8.1: Working persons	Number	Percent
Persons aged 10-15 years who were working	46,191	50.9
Persons aged 10-17 years who were working	60,998	52.8
Persons aged 18-30 years who were working	80,342	79.4
Persons aged 16-64 years who were working	188,784	82.4
Persons aged 18 years and above who were working	185,975	84.0
Persons aged 60 years and above who were working	18,729	75.0
8.2: Youths Not working and not in school		
Youths (Persons aged 18-30 years) who were neither working nor in school	8,191	8.1

9: USE OF ICT

9.1: Mobile phone ownership (10 years and above)	Number	Percent
Persons aged 10 years and above that own at least one mobile phone	97,556	28.9
Males aged 10 years and above that own at least one mobile phone	56,928	36.1
Females aged 10 years and above that own at least one mobile phone	40,628	22.7
9.2: Mobile phone ownership (18-30 years)	Number	Percent
Persons aged 18-30 years and above that own at least one mobile phone	41,033	40.6
Males aged 18-30 years and above that own at least one mobile phone	23,656	51.1
Females aged 18-30 years and above that own at least one mobile phone	17,377	31.7
9.3: Internet Usage (10 years and above)	Number	Percent
Persons aged 10 years and above that use internet	20,115	6.0
Males aged 10 years and above that use internet	12,877	8.2
Females aged 10 years and above that use internet	7,238	4.0
9.4: Internet Usage (18-30 years)	Number	Percent
Persons aged 18-30 years that use internet	10,664	10.5
Males aged 18-30 years that use internet	6,803	14.7
Females aged 18-30 years that use internet	3,861	7.0

10: HOUSING CONDITIONS

10.1: Construction Materials For the Dwelling Units	Number	Percent
Households living in dwelling units constructed using permanent roof materials	67,533	65.9
Households living in dwelling units constructed using permanent wall materials	38,183	37.3
Households living in dwelling units constructed using permanent floor materials	26,119	25.5
10.2: Status of Dwelling Units	Number	Percent
Households living in semi-permanent dwelling units	47,372	46.2
Households living in temporary dwelling units	32,560	31.8

11: ACCESS TO COMMUNITY SERVICES

11.1: Access to a Primary school	Number	Percent
Households that are 5 km or more to the nearest primary school, <u>whether public or private</u>	7,697	7.5
Households that are 5 km or more to the nearest <u>public</u> primary school	14,265	13.9
11.2: Access to a Secondary school	Number	Percent
Households that are 5 km or more to the nearest secondary school, <u>whether public or private</u>	26,993	26.3
Households that are 5 km or more to the nearest <u>public</u> secondary school	39,344	38.4
11.3: Access to a Health Facility	Number	Percent
Households that are 5 km or more to the nearest health facility, <u>whether public or private</u>	14,186	13.8
Households that are 5 km or more to the nearest <u>public</u> health facility	22,611	22.1
11.4: Access to a Police post /Police station	Number	Percent
Households that are 5 km or more to the nearest Police Post/Police Station	29,909	29.2

12: HOUSEHOLD HEALTH AND HYGIENE

12.1: Ownership of Mosquito nets	Number	Percent
Households that own at least a mosquito net	97,896	95.5
Households that own at least a mosquito net that was received free (Government /NGO)	93,754	95.8
12.2: Source Of Water For Drinking	Number	Percent
Households that have access to piped water	13,353	13.0
Households that use a bore hole	54,212	52.9
12.3: Ownership of a Toilet facility	Number	Percent
Households without any toilet facility	9,467	9.2
12.4: Other environmental conditions	Number	Percent
Households that <u>properly</u> dispose off solid waste	46,277	45.2
Households which are not living in decent dwellings	99,893	97.5

13: HOUSEHOLD ASSETS

13.1: Owner occupied Dwellings	Number	Percent
Households that are owner occupied	87,608	85.5
Male headed households that are owner occupied	69,446	87.3
Female headed households that are owner occupied	18,162	79.2
13.2: Movable Assets	Number	Percent
Households that own a television	8,435	8.2
Households that own a computer	4,119	4.0
Households that own a bicycle	44,048	43.0
Households that own a radio	45,416	44.3

14: OTHER HOUSEHOLD CHARACTERISTICS

14.1: Main source of information	Number	Percent
Households whose main source of information is a radio	49,096	47.9
Households whose main source of information is a community announcer	4,813	4.7
Households whose main source of information is a telephone	10,172	9.9
14.2: Household Economy and Welfare	Number	Percent
Households that received remittances from abroad in the last 12 months	20,434	19.9
Households where any member possesses a bank account	18,467	18.0
Households that depend on subsistence farming as a main source of livelihood	81,206	79.2
Households with at least one member engaged in a non-agricultural household based enterprise	68,884	93.5
Households where (members aged 5 years and above) consume less than two meals in a day	6,437	6.3
14.3: Source of Energy for lighting	Number	Percent
Households that have access to electricity	11,431	11.2
Households that use Tadooba for lighting	75,395	73.6

15: HOUSEHOLD BASED AGRICULTURAL ACTIVITIES

15.1: Household based Agricultural activities	Number	Percent
Households engaged in crop growing	87,704	85.6
Households engaged in maize growing	74,544	72.7
Households engaged in coffee growing	346	0.3
Households engaged in growing of beans	45,504	44.4
Households engaged in growing of millet	36,155	35.3
Households engaged in growing of sweet potatoes	30,565	29.8
Households engaged in growing of matooke	12,860	12.5
Households engaged livestock farming	76,815	74.9
Households engaged in either crop growing or livestock farming	91,474	89.2

TORORO MUNICIPALITY CONSTITUENCY

LIST OF TABLES

- | | |
|----|---|
| 1 | Population |
| 2 | Education |
| 3 | Illiteracy status |
| 4 | Ownership of a Birth Certificate |
| 5 | Parental Survival and Orphanhood |
| 6 | Disability |
| 7 | Marriage and Child Bearing |
| 8 | Working Status |
| 9 | Use of ICT |
| 10 | Housing Conditions |
| 11 | Access to Community Services |
| 12 | Household Health and Hygiene |
| 13 | Household Assets |
| 14 | Other Household Characteristics |
| 15 | Household Based Agricultural Activities |

1: POPULATION

1.1: Population Size	Number	Percent
Total population	42,016	
Total male population	19,852	47.2
Total female population	22,164	52.8
Sex ratio (males per 100 females)	89.6	
1.2: Households	Number	Percent
Total households	9,961	
Households headed by males	6,921	69.5
Households headed by females	3,040	30.5
Households headed by children (aged 10-17 years)	109	1.1
Households headed by youth (aged 18-30 years)	3,052	30.6
Households headed by older persons (aged 60 years and above)	926	9.3
1.3: Population by Age groups	Number	Percent
Population aged 0-17 years	19,956	49.5
Population aged 18-30 years	10,616	26.3
Population aged 31-59 years	8,530	21.1
Population aged 60 years and over	1,242	3.1
1.4: Population by Special Age groups	Number	Percent
Population aged Less than one Year	1,313	3.3
Population aged 0-4 Years	5,943	14.7
Population aged 0-8 Years	10,222	25.3
Population aged 2-8 Years	7,733	19.2
Population aged 2-17 Years	17,467	43.3
Population aged 6-12 Years	7,476	18.5
Population aged 6-15 Years	10,752	26.7
Population aged 10-15 Years	6,472	16.0
Population aged 10-17 Years	8,681	21.5
Population aged 15-24 Years	9,689	24.0
Population aged 16-64 Years	21,809	54.1
Population aged 15-29 Years	13,112	32.5
Population aged 2 Years and Over	37,855	93.8
Population aged 10 Years and Over	29,069	72.1
Population aged 15 Years and Over	23,654	58.6
Population aged 18 Years and Over	20,388	50.5
Population aged 20 Years and Over	18,296	45.3
Population aged 65 Years and over	788	2.0

2: EDUCATION

2.1: Non School attendance of	Number	Percent
Persons aged 6-15 years not attending school	872	8.1
Males aged 6-15 years not attending school	385	7.6
Females aged 6-15 years not attending school	487	8.6
2.2: Persons attending Primary school	Number	Percent
Persons aged 6-12 years attending primary school	6,573	87.9
Males aged 6-12 years attending primary school	3,165	87.7
Females aged 6-12 years attending primary school	3,408	88.2
2.3: Persons attending Secondary school	Number	Percent
Persons aged 13-18 years attending secondary school	3,412	51.7
Males aged 13-18 years attending secondary school	1,587	53.9
Females aged 13-18 years attending secondary school	1,825	50.0
2.4: Persons not in School and Highest Level Completed is below S.4	Number	Percent
Persons aged 15 years and above whose highest level of education completed is below S.4	8,539	53.5
Males aged 15 years and above whose highest level of education completed is below S.4	3,478	48.2
Females aged 15 years and above whose highest level of education completed is below S.4	5,061	58.0
2.5: Persons not in School and Highest Level Completed is "O" Level	Number	Percent
Persons aged 18 years and above whose highest level of education completed is "O" level (S.4)	2,370	11.6
Males aged 18 years and above whose highest level of education completed is "O" level (S.4)	1,103	11.9
Females aged 18 years and above whose highest level of education completed is "O" level (S.4)	1,267	11.4
2.6: Persons not in School and Highest Level Completed is "A" Level	Number	Percent
Persons aged 20 years and above whose highest level of education completed is "A" level (S.6)	1,052	5.7
Males aged 20 years and above whose highest level of education completed is "A" level (S.6)	651	7.8
Females aged 20 years and above whose highest level of education completed is "A" level (S.6)	401	4.0

3: ILLITERACY STATUS

3.1: Persons aged 18 years and above	Number	Percent
Persons aged 18 years and above who are illiterate	3,618	17.7
Males aged 18 years and above who are illiterate	1,147	12.4
Females aged 18 years and above who are illiterate	2,471	22.2
3.2: Other age groups	Number	Percent
Persons aged 10-17 years who are illiterate	1,206	13.9
Persons aged 18-30 years who are illiterate	1,177	11.1
Persons aged 60 years and above who are illiterate	572	46.1

4: OWNERSHIP OF A BIRTH CERTIFICATE

4.1: Children with birth certificates	Number	Percent
Children less than 1 year who have a birth certificate	495	37.7
Children less than 5 years who have a birth certificate	2,779	46.8
Children 0-8 years who have a birth certificate	5,091	49.8
Children 0-17 years who have a birth certificate	10,039	53.1

5: PARENTAL SURVIVAL AND ORPHANHOOD

5.1: Children 0-8 years	Number	Percent
Children 0-8 years who have lost one parent	339	3.3
Children 0-8 years who have lost both parents	22	0.2
Children 0-8 years who have lost at least a parent (total number of orphans)	361	3.5
Children 0-8 years who have both parents	9,861	96.5
5.2: All children (0-17 years)	Number	Percent
Children 0-17 years who have lost one parent	1,529	7.7
Children 0-17 years who have lost both parents	206	1.0
Children 0-17 years who have lost at least a parent (total number of orphans)	1,735	8.7
Children 0-17 years who have both parents	18,221	91.3

6: DISABILITY

6.1: Persons with a disability	Number	Percent
Persons aged 2 years and above with a disability	4,131	10.9
Persons aged 2 years and above with a seeing disability	2,600	6.9
Persons aged 2 years and above with a hearing disability	851	2.2
Persons aged 2 years and above with a walking disability	1,278	3.4
Persons aged 2 years and above with a remembering disability	1,061	2.8
Persons aged 2 years and above with multiple disabilities	994	24.7
Children aged 2-17 years with a disability	810	4.6
Youth aged 18-30 years with a disability	801	7.5
Older persons aged 60 years and above with a disability	741	59.7

7: MARRIAGE AND CHILDBEARING

7.1: Marital status of the population	Number	Percent
Persons aged 10 years and above who are married	6,595	41.5
Persons aged 18 years and above who are married	6,371	57.1
Females aged 50 years and above who are widowed	585	39.3
Females aged 10-17 years who have ever been married	244	5.1
Females aged 10-19 years who have ever been married	551	9.3
7.2: Females who have had a birth	Number	Percent
Females aged 12-17 years who have given birth	279	7.7
Females aged 12-19 years who have given birth	583	12.1

8: WORKING STATUS

8.1: Working persons	Number	Percent
Persons aged 10-15 years who were working	963	14.9
Persons aged 10-17 years who were working	1,471	16.9
Persons aged 18-30 years who were working	5,910	55.7
Persons aged 16-64 years who were working	13,701	62.8
Persons aged 18 years and above who were working	13,575	66.6
Persons aged 60 years and above who were working	691	55.6
8.2: Youths Not working and not in school		
Youths (Persons aged 18-30 years) who were neither working nor in school	1,734	16.3

9: USE OF ICT

9.1: Mobile phone ownership (10 years and above)	Number	Percent
Persons aged 10 years and above that own at least one mobile phone	15,563	53.5
Males aged 10 years and above that own at least one mobile phone	7,672	58.3
Females aged 10 years and above that own at least one mobile phone	7,891	49.6
9.2: Mobile phone ownership (18-30 years)	Number	Percent
Persons aged 18-30 years and above that own at least one mobile phone	7,276	68.5
Males aged 18-30 years and above that own at least one mobile phone	3,372	73.6
Females aged 18-30 years and above that own at least one mobile phone	3,904	64.7
9.3: Internet Usage (10 years and above)	Number	Percent
Persons aged 10 years and above that use internet	6,064	20.9
Males aged 10 years and above that use internet	3,581	27.2
Females aged 10 years and above that use internet	2,483	15.6
9.4: Internet Usage (18-30 years)	Number	Percent
Persons aged 18-30 years that use internet	3,342	31.5
Males aged 18-30 years that use internet	1,864	40.7
Females aged 18-30 years that use internet	1,478	24.5

10: HOUSING CONDITIONS

10.1: Construction Materials For the Dwelling Units	Number	Percent
Households living in dwelling units constructed using permanent roof materials	9,508	95.5
Households living in dwelling units constructed using permanent wall materials	7,204	72.3
Households living in dwelling units constructed using permanent floor materials	7,619	76.5
10.2: Status of Dwelling Units	Number	Percent
Households living in semi-permanent dwelling units	2,693	27.0
Households living in temporary dwelling units	378	3.8

11: ACCESS TO COMMUNITY SERVICES

11.1: Access to a Primary school	Number	Percent
Households that are 5 km or more to the nearest primary school, <u>whether public or private</u>	262	2.6
Households that are 5 km or more to the nearest <u>public</u> primary school	846	8.5
11.2: Access to a Secondary school	Number	Percent
Households that are 5 km or more to the nearest secondary school, <u>whether public or private</u>	312	3.1
Households that are 5 km or more to the nearest <u>public</u> secondary school	807	8.1
11.3: Access to a Health Facility	Number	Percent
Households that are 5 km or more to the nearest health facility, <u>whether public or private</u>	257	2.6
Households that are 5 km or more to the nearest <u>public</u> health facility	826	8.3
11.4: Access to a Police post /Police station	Number	Percent
Households that are 5 km or more to the nearest Police Post/Police Station	950	9.5

12: HOUSEHOLD HEALTH AND HYGIENE

12.1:Ownership of Mosquito nets	Number	Percent
Households that own at least a mosquito net	9,017	90.5
Households that own at least a mosquito net that was received free (Government /NGO)	7,423	82.3
12.2: Source Of Water For Drinking	Number	Percent
Households that have access to piped water	5,961	59.8
Households that use a bore hole	1,327	13.3
12.3:Ownership of a Toilet facility	Number	Percent
Households without any toilet facility	328	3.3
12.4: Other environmental conditions	Number	Percent
Households that <u>properly</u> dispose off solid waste	7,149	71.8
Households which are not living in decent dwellings	8,528	85.6

13: HOUSEHOLD ASSETS

13.1: Owner occupied Dwellings	Number	Percent
Households that are owner occupied	3,422	34.4
Male headed households that are owner occupied	2,452	35.4
Female headed households that are owner occupied	970	31.9
13.2: Movable Assets	Number	Percent
Households that own a television	3,268	32.8
Households that own a computer	1,087	10.9
Households that own a bicycle	2,674	26.8
Households that own a radio	5,659	56.8

14: OTHER HOUSEHOLD CHARACTERISTICS

14.1: Main source of information	Number	Percent
Households whose main source of information is a radio	4,780	48.0
Households whose main source of information is a community announcer	130	1.3
Households whose main source of information is a telephone	1,721	17.3
14.2: Household Economy and Welfare	Number	Percent
Households that received remittances from abroad in the last 12 months	2,693	27.0
Households where any member possesses a bank account	4,428	44.5
Households that depend on subsistence farming as a main source of livelihood	2,153	21.6
Households with at least one member engaged in a non-agricultural household based enterprise	8,239	89.5
Households where (members aged 5 years and above) consume less than two meals in a day	962	9.7
14.3: Source of Energy for lighting	Number	Percent
Households that have access to electricity	4,368	43.9
Households that use Tadooba for lighting	3,003	30.1

15: HOUSEHOLD BASED AGRICULTURAL ACTIVITIES

15.1: Household based Agricultural activities	Number	Percent
Households engaged in crop growing	4,738	47.6
Households engaged in maize growing	4,162	41.8
Households engaged in coffee growing	21	0.2
Households engaged in growing of beans	2,394	24.0
Households engaged in growing of millet	1,156	11.6
Households engaged in growing of sweet potatoes	1,319	13.2
Households engaged in growing of matooke	980	9.8
Households engaged livestock farming	4,339	43.6
Households engaged in either crop growing or livestock farming	5,821	58.4

TORORO NORTH COUNTY CONSTITUENCY

LIST OF TABLES

- 1 Population
- 2 Education
- 3 Illiteracy status
- 4 Ownership of a Birth Certificate
- 5 Parental Survival and Orphanhood
- 6 Disability
- 7 Marriage and Child Bearing
- 8 Working Status
- 9 Use of ICT
- 10 Housing Conditions
- 11 Access to Community Services
- 12 Household Health and Hygiene
- 13 Household Assets
- 14 Other Household Characteristics
- 15 Household Based Agricultural Activities

1: POPULATION

1.1: Population Size	Number	Percent
Total population	82,781	
Total male population	39,855	48.1
Total female population	42,926	51.9
Sex ratio (males per 100 females)	92.8	
1.2: Households	Number	Percent
Total households	16,245	
Households headed by males	12,730	78.4
Households headed by females	3,515	21.6
Households headed by children (aged 10-17 years)	45	0.3
Households headed by youth (aged 18-30 years)	3,766	23.2
Households headed by older persons (aged 60 years and above)	3,026	18.6
1.3: Population by Age groups	Number	Percent
Population aged 0-17 years	47,353	57.5
Population aged 18-30 years	16,006	19.4
Population aged 31-59 years	14,949	18.1
Population aged 60 years and over	4,109	5.0
1.4: Population by Special Age groups	Number	Percent
Population aged Less than one Year	3,106	3.8
Population aged 0-4 Years	14,868	18.0
Population aged 0-8 Years	25,982	31.5
Population aged 2-8 Years	20,010	24.3
Population aged 2-17 Years	41,381	50.2
Population aged 6-12 Years	18,667	22.6
Population aged 6-15 Years	25,864	31.4
Population aged 10-15 Years	14,828	18.0
Population aged 10-17 Years	18,720	22.7
Population aged 15-24 Years	16,622	20.2
Population aged 16-64 Years	36,177	43.9
Population aged 15-29 Years	21,116	25.6
Population aged 2 Years and Over	76,445	92.8
Population aged 10 Years and Over	53,784	65.3
Population aged 15 Years and Over	41,111	49.9
Population aged 18 Years and Over	35,064	42.5
Population aged 20 Years and Over	31,441	38.1
Population aged 65 Years and over	2,779	3.4

2: EDUCATION

2.1: Non School attendance of	Number	Percent
Persons aged 6-15 years not attending school	2,120	8.2
Males aged 6-15 years not attending school	1,092	8.5
Females aged 6-15 years not attending school	1,028	7.9
2.2: Persons attending Primary school	Number	Percent
Persons aged 6-12 years attending primary school	16,282	87.2
Males aged 6-12 years attending primary school	7,966	86.2
Females aged 6-12 years attending primary school	8,316	88.2
2.3: Persons attending Secondary school	Number	Percent
Persons aged 13-18 years attending secondary school	3,825	29.4
Males aged 13-18 years attending secondary school	2,103	32.3
Females aged 13-18 years attending secondary school	1,722	26.5
2.4: Persons not in School and Highest Level Completed is below S.4	Number	Percent
Persons aged 15 years and above whose highest level of education completed is below S.4	22,882	88.7
Males aged 15 years and above whose highest level of education completed is below S.4	10,265	84.5
Females aged 15 years and above whose highest level of education completed is below S.4	12,617	92.5
2.5: Persons not in School and Highest Level Completed is "O" Level	Number	Percent
Persons aged 18 years and above whose highest level of education completed is "O" level (S.4)	1,689	4.8
Males aged 18 years and above whose highest level of education completed is "O" level (S.4)	1,068	6.8
Females aged 18 years and above whose highest level of education completed is "O" level (S.4)	621	3.2
2.6: Persons not in School and Highest Level Completed is "A" Level	Number	Percent
Persons aged 20 years and above whose highest level of education completed is "A" level (S.6)	336	1.1
Males aged 20 years and above whose highest level of education completed is "A" level (S.6)	251	1.8
Females aged 20 years and above whose highest level of education completed is "A" level (S.6)	85	0.5

3: ILLITERACY STATUS

3.1: Persons aged 18 years and above	Number	Percent
Persons aged 18 years and above who are illiterate	15,695	44.8
Males aged 18 years and above who are illiterate	5,134	32.6
Females aged 18 years and above who are illiterate	10,561	54.6
3.2: Other age groups	Number	Percent
Persons aged 10-17 years who are illiterate	5,939	31.7
Persons aged 18-30 years who are illiterate	4,692	29.3
Persons aged 60 years and above who are illiterate	2,890	70.3

4: OWNERSHIP OF A BIRTH CERTIFICATE

4.1: Children with birth certificates	Number	Percent
Children less than 1 year who have a birth certificate	882	28.4
Children less than 5 years who have a birth certificate	5,656	38.0
Children 0-8 years who have a birth certificate	10,832	41.7
Children 0-17 years who have a birth certificate	21,078	46.3

5: PARENTAL SURVIVAL AND ORPHANHOOD

5.1: Children 0-8 years	Number	Percent
Children 0-8 years who have lost one parent	793	3.1
Children 0-8 years who have lost both parents	65	0.3
Children 0-8 years who have lost at least a parent (total number of orphans)	858	3.3
Children 0-8 years who have both parents	25,124	96.7
5.2: All children (0-17 years)	Number	Percent
Children 0-17 years who have lost one parent	2,958	6.2
Children 0-17 years who have lost both parents	302	0.6
Children 0-17 years who have lost at least a parent (total number of orphans)	3,260	6.9
Children 0-17 years who have both parents	44,093	93.1

6: DISABILITY

6.1: Persons with a disability	Number	Percent
Persons aged 2 years and above with a disability	12,242	16.0
Persons aged 2 years and above with a seeing disability	5,675	7.4
Persons aged 2 years and above with a hearing disability	3,618	4.7
Persons aged 2 years and above with a walking disability	4,083	5.3
Persons aged 2 years and above with a remembering disability	5,942	7.8
Persons aged 2 years and above with multiple disabilities	3,907	33.1
Children aged 2-17 years with a disability	3,552	8.6
Youth aged 18-30 years with a disability	2,089	13.1
Older persons aged 60 years and above with a disability	2,491	60.6

7: MARRIAGE AND CHILDBEARING

7.1: Marital status of the population	Number	Percent
Persons aged 10 years and above who are married	14,850	51.7
Persons aged 18 years and above who are married	14,150	73.2
Females aged 50 years and above who are widowed	1,685	39.2
Females aged 10-17 years who have ever been married	765	8.1
Females aged 10-19 years who have ever been married	1,763	15.6
7.2: Females who have had a birth	Number	Percent
Females aged 12-17 years who have given birth	611	9.0
Females aged 12-19 years who have given birth	1,423	16.4

8: WORKING STATUS

8.1: Working persons	Number	Percent
Persons aged 10-15 years who were working	6,168	41.6
Persons aged 10-17 years who were working	8,129	43.4
Persons aged 18-30 years who were working	12,615	78.8
Persons aged 16-64 years who were working	29,279	80.9
Persons aged 18 years and above who were working	29,201	83.3
Persons aged 60 years and above who were working	3,017	73.4
8.2: Youths Not working and not in school		
Youths (Persons aged 18-30 years) who were neither working nor in school	1,290	8.1

9: USE OF ICT

9.1: Mobile phone ownership (10 years and above)	Number	Percent
Persons aged 10 years and above that own at least one mobile phone	13,495	25.1
Males aged 10 years and above that own at least one mobile phone	8,291	33.1
Females aged 10 years and above that own at least one mobile phone	5,204	18.1
9.2: Mobile phone ownership (18-30 years)	Number	Percent
Persons aged 18-30 years and above that own at least one mobile phone	5,491	34.3
Males aged 18-30 years and above that own at least one mobile phone	3,434	46.9
Females aged 18-30 years and above that own at least one mobile phone	2,057	23.7
9.3: Internet Usage (10 years and above)	Number	Percent
Persons aged 10 years and above that use internet	2,157	4.0
Males aged 10 years and above that use internet	1,474	5.9
Females aged 10 years and above that use internet	683	2.4
9.4: Internet Usage (18-30 years)	Number	Percent
Persons aged 18-30 years that use internet	1,101	6.9
Males aged 18-30 years that use internet	771	10.5
Females aged 18-30 years that use internet	330	3.8

10: HOUSING CONDITIONS

10.1: Construction Materials For the Dwelling Units	Number	Percent
Households living in dwelling units constructed using permanent roof materials	9,398	57.9
Households living in dwelling units constructed using permanent wall materials	3,559	21.9
Households living in dwelling units constructed using permanent floor materials	2,226	13.7
10.2: Status of Dwelling Units	Number	Percent
Households living in semi-permanent dwelling units	8,234	50.7
Households living in temporary dwelling units	6,334	39.0

11: ACCESS TO COMMUNITY SERVICES

11.1: Access to a Primary school	Number	Percent
Households that are 5 km or more to the nearest primary school, <u>whether public or private</u>	1,063	6.5
Households that are 5 km or more to the nearest <u>public</u> primary school	2,311	14.2
11.2: Access to a Secondary school	Number	Percent
Households that are 5 km or more to the nearest secondary school, <u>whether public or private</u>	5,721	35.2
Households that are 5 km or more to the nearest <u>public</u> secondary school	8,057	49.6
11.3: Access to a Health Facility	Number	Percent
Households that are 5 km or more to the nearest health facility, <u>whether public or private</u>	2,350	14.5
Households that are 5 km or more to the nearest <u>public</u> health facility	3,667	22.6
11.4: Access to a Police post /Police station	Number	Percent
Households that are 5 km or more to the nearest Police Post/Police Station	4,978	30.6

12: HOUSEHOLD HEALTH AND HYGIENE

12.1:Ownership of Mosquito nets	Number	Percent
Households that own at least a mosquito net	15,759	97.0
Households that own at least a mosquito net that was received free (Government /NGO)	15,447	98.0
12.2: Source Of Water For Drinking	Number	Percent
Households that have access to piped water	276	1.7
Households that use a bore hole	12,522	77.1
12.3:Ownership of a Toilet facility	Number	Percent
Households without any toilet facility	1,780	11.0
12.4: Other environmental conditions	Number	Percent
Households that <u>properly</u> dispose off solid waste	5,645	34.7
Households which are not living in decent dwellings	16,138	99.3

13: HOUSEHOLD ASSETS

13.1: Owner occupied Dwellings	Number	Percent
Households that are owner occupied	15,596	96.0
Male headed households that are owner occupied	12,303	96.6
Female headed households that are owner occupied	3,293	93.7
13.2: Movable Assets	Number	Percent
Households that own a television	605	3.7
Households that own a computer	472	2.9
Households that own a bicycle	7,202	44.3
Households that own a radio	6,846	42.1

14: OTHER HOUSEHOLD CHARACTERISTICS

14.1: Main source of information	Number	Percent
Households whose main source of information is a radio	7,059	43.5
Households whose main source of information is a community announcer	734	4.5
Households whose main source of information is a telephone	1,330	8.2
14.2: Household Economy and Welfare	Number	Percent
Households that received remittances from abroad in the last 12 months	3,094	19.0
Households where any member possesses a bank account	1,756	10.8
Households that depend on subsistence farming as a main source of livelihood	14,493	89.2
Households with at least one member engaged in a non-agricultural household based enterprise	9,129	93.8
Households where (members aged 5 years and above) consume less than two meals in a day	1,044	6.4
14.3: Source of Energy for lighting	Number	Percent
Households that have access to electricity	851	5.2
Households that use Tadooba for lighting	12,744	78.4

15: HOUSEHOLD BASED AGRICULTURAL ACTIVITIES

15.1: Household based Agricultural activities	Number	Percent
Households engaged in crop growing	14,906	91.8
Households engaged in maize growing	12,787	78.7
Households engaged in coffee growing	23	0.1
Households engaged in growing of beans	9,206	56.7
Households engaged in growing of millet	3,671	22.6
Households engaged in growing of sweet potatoes	5,975	36.8
Households engaged in growing of matooke	2,821	17.4
Households engaged livestock farming	12,609	77.6
Households engaged in either crop growing or livestock farming	15,311	94.3

TORORO SOUTH COUNTY CONSTITUENCY

LIST OF TABLES

- 1 Population
- 2 Education
- 3 Illiteracy status
- 4 Ownership of a Birth Certificate
- 5 Parental Survival and Orphanhood
- 6 Disability
- 7 Marriage and Child Bearing
- 8 Working Status
- 9 Use of ICT
- 10 Housing Conditions
- 11 Access to Community Services
- 12 Household Health and Hygiene
- 13 Household Assets
- 14 Other Household Characteristics
- 15 Household Based Agricultural Activities

1: POPULATION

1.1: Population Size	Number	Percent
Total population	103,273	
Total male population	50,360	48.8
Total female population	52,913	51.2
Sex ratio (males per 100 females)	95.2	
1.2: Households	Number	Percent
Total households	20,921	
Households headed by males	16,095	76.9
Households headed by females	4,826	23.1
Households headed by children (aged 10-17 years)	62	0.3
Households headed by youth (aged 18-30 years)	4,970	23.8
Households headed by older persons (aged 60 years and above)	3,241	15.5
1.3: Population by Age groups	Number	Percent
Population aged 0-17 years	55,724	54.9
Population aged 18-30 years	21,593	21.3
Population aged 31-59 years	19,839	19.5
Population aged 60 years and over	4,386	4.3
1.4: Population by Special Age groups	Number	Percent
Population aged Less than one Year	3,600	3.5
Population aged 0-4 Years	17,285	17.0
Population aged 0-8 Years	30,115	29.7
Population aged 2-8 Years	23,094	22.7
Population aged 2-17 Years	48,703	48.0
Population aged 6-12 Years	21,831	21.5
Population aged 6-15 Years	30,310	29.8
Population aged 10-15 Years	17,569	17.3
Population aged 10-17 Years	22,617	22.3
Population aged 15-24 Years	21,376	21.1
Population aged 16-64 Years	47,828	47.1
Population aged 15-29 Years	27,765	27.3
Population aged 2 Years and Over	94,521	93.1
Population aged 10 Years and Over	68,435	67.4
Population aged 15 Years and Over	53,441	52.6
Population aged 18 Years and Over	45,818	45.1
Population aged 20 Years and Over	41,215	40.6
Population aged 65 Years and over	3,038	3.0

2: EDUCATION

2.1: Non School attendance of	Number	Percent
Persons aged 6-15 years not attending school	2,260	7.5
Males aged 6-15 years not attending school	1,075	7.2
Females aged 6-15 years not attending school	1,185	7.7
2.2: Persons attending Primary school	Number	Percent
Persons aged 6-12 years attending primary school	18,820	86.2
Males aged 6-12 years attending primary school	9,346	86.0
Females aged 6-12 years attending primary school	9,474	86.5
2.3: Persons attending Secondary school	Number	Percent
Persons aged 13-18 years attending secondary school	5,282	33.0
Males aged 13-18 years attending secondary school	2,780	35.8
Females aged 13-18 years attending secondary school	2,502	30.4
2.4: Persons not in School and Highest Level Completed is below S.4	Number	Percent
Persons aged 15 years and above whose highest level of education completed is below S.4	28,940	81.3
Males aged 15 years and above whose highest level of education completed is below S.4	12,587	75.5
Females aged 15 years and above whose highest level of education completed is below S.4	16,353	86.4
2.5: Persons not in School and Highest Level Completed is "O" Level	Number	Percent
Persons aged 18 years and above whose highest level of education completed is "O" level (S.4)	3,695	8.1
Males aged 18 years and above whose highest level of education completed is "O" level (S.4)	2,228	10.6
Females aged 18 years and above whose highest level of education completed is "O" level (S.4)	1,467	5.9
2.6: Persons not in School and Highest Level Completed is "A" Level	Number	Percent
Persons aged 20 years and above whose highest level of education completed is "A" level (S.6)	1,012	2.5
Males aged 20 years and above whose highest level of education completed is "A" level (S.6)	696	3.7
Females aged 20 years and above whose highest level of education completed is "A" level (S.6)	316	1.4

3: ILLITERACY STATUS

3.1: Persons aged 18 years and above	Number	Percent
Persons aged 18 years and above who are illiterate	16,628	36.3
Males aged 18 years and above who are illiterate	5,412	25.9
Females aged 18 years and above who are illiterate	11,216	45.1
3.2: Other age groups	Number	Percent
Persons aged 10-17 years who are illiterate	6,124	27.1
Persons aged 18-30 years who are illiterate	4,521	20.9
Persons aged 60 years and above who are illiterate	2,967	67.6

4: OWNERSHIP OF A BIRTH CERTIFICATE

4.1: Children with birth certificates	Number	Percent
Children less than 1 year who have a birth certificate	518	14.4
Children less than 5 years who have a birth certificate	3,833	22.2
Children 0-8 years who have a birth certificate	8,405	27.9
Children 0-17 years who have a birth certificate	18,086	33.9

5: PARENTAL SURVIVAL AND ORPHANHOOD

5.1: Children 0-8 years	Number	Percent
Children 0-8 years who have lost one parent	1,067	3.5
Children 0-8 years who have lost both parents	69	0.2
Children 0-8 years who have lost at least a parent (total number of orphans)	1,136	3.8
Children 0-8 years who have both parents	28,979	96.2
5.2: All children (0-17 years)	Number	Percent
Children 0-17 years who have lost one parent	3,836	6.9
Children 0-17 years who have lost both parents	418	0.8
Children 0-17 years who have lost at least a parent (total number of orphans)	4,254	7.6
Children 0-17 years who have both parents	51,470	92.4

6: DISABILITY

6.1: Persons with a disability	Number	Percent
Persons aged 2 years and above with a disability	13,150	13.9
Persons aged 2 years and above with a seeing disability	6,454	6.8
Persons aged 2 years and above with a hearing disability	3,575	3.8
Persons aged 2 years and above with a walking disability	4,452	4.7
Persons aged 2 years and above with a remembering disability	5,579	5.9
Persons aged 2 years and above with multiple disabilities	3,858	30.5
Children aged 2-17 years with a disability	3,319	6.8
Youth aged 18-30 years with a disability	2,165	10.0
Older persons aged 60 years and above with a disability	2,704	61.7

7: MARRIAGE AND CHILDBEARING

7.1: Marital status of the population	Number	Percent
Persons aged 10 years and above who are married	17,671	48.5
Persons aged 18 years and above who are married	17,070	68.6
Females aged 50 years and above who are widowed	1,717	36.6
Females aged 10-17 years who have ever been married	661	5.7
Females aged 10-19 years who have ever been married	1,599	11.4
7.2: Females who have had a birth	Number	Percent
Females aged 12-17 years who have given birth	646	7.6
Females aged 12-19 years who have given birth	1,504	13.8

8: WORKING STATUS

8.1: Working persons	Number	Percent
Persons aged 10-15 years who were working	11,068	63.0
Persons aged 10-17 years who were working	14,708	65.0
Persons aged 18-30 years who were working	17,898	82.9
Persons aged 16-64 years who were working	41,122	86.0
Persons aged 18 years and above who were working	39,697	86.6
Persons aged 60 years and above who were working	3,420	78.0
8.2: Youths Not working and not in school		
Youths (Persons aged 18-30 years) who were neither working nor in school	1,902	8.8

9: USE OF ICT

9.1: Mobile phone ownership (10 years and above)	Number	Percent
Persons aged 10 years and above that own at least one mobile phone	22,916	33.5
Males aged 10 years and above that own at least one mobile phone	13,111	41.0
Females aged 10 years and above that own at least one mobile phone	9,805	26.9
9.2: Mobile phone ownership (18-30 years)	Number	Percent
Persons aged 18-30 years and above that own at least one mobile phone	10,293	47.7
Males aged 18-30 years and above that own at least one mobile phone	5,710	58.1
Females aged 18-30 years and above that own at least one mobile phone	4,583	39.0
9.3: Internet Usage (10 years and above)	Number	Percent
Persons aged 10 years and above that use internet	5,025	7.3
Males aged 10 years and above that use internet	3,320	10.4
Females aged 10 years and above that use internet	1,705	4.7
9.4: Internet Usage (18-30 years)	Number	Percent
Persons aged 18-30 years that use internet	2,770	12.8
Males aged 18-30 years that use internet	1,839	18.7
Females aged 18-30 years that use internet	931	7.9

10: HOUSING CONDITIONS

10.1: Construction Materials For the Dwelling Units	Number	Percent
Households living in dwelling units constructed using permanent roof materials	12,937	61.8
Households living in dwelling units constructed using permanent wall materials	6,549	31.3
Households living in dwelling units constructed using permanent floor materials	6,804	32.5
10.2: Status of Dwelling Units	Number	Percent
Households living in semi-permanent dwelling units	7,783	37.2
Households living in temporary dwelling units	7,537	36.0

11: ACCESS TO COMMUNITY SERVICES

11.1: Access to a Primary school	Number	Percent
Households that are 5 km or more to the nearest primary school, <u>whether public or private</u>	2,288	10.9
Households that are 5 km or more to the nearest <u>public</u> primary school	3,550	17.0
11.2: Access to a Secondary school	Number	Percent
Households that are 5 km or more to the nearest secondary school, <u>whether public or private</u>	6,112	29.2
Households that are 5 km or more to the nearest <u>public</u> secondary school	10,022	47.9
11.3: Access to a Health Facility	Number	Percent
Households that are 5 km or more to the nearest health facility, <u>whether public or private</u>	3,694	17.7
Households that are 5 km or more to the nearest <u>public</u> health facility	5,398	25.8
11.4: Access to a Police post /Police station	Number	Percent
Households that are 5 km or more to the nearest Police Post/Police Station	7,384	35.3

12: HOUSEHOLD HEALTH AND HYGIENE

12.1:Ownership of Mosquito nets	Number	Percent
Households that own at least a mosquito net	19,735	94.3
Households that own at least a mosquito net that was received free (Government /NGO)	18,456	93.5
12.2: Source Of Water For Drinking	Number	Percent
Households that have access to piped water	4,194	20.0
Households that use a bore hole	8,334	39.8
12.3:Ownership of a Toilet facility	Number	Percent
Households without any toilet facility	1,304	6.2
12.4: Other environmental conditions	Number	Percent
Households that <u>properly</u> dispose off solid waste	10,686	51.1
Households which are not living in decent dwellings	20,513	98.0

13: HOUSEHOLD ASSETS

13.1: Owner occupied Dwellings	Number	Percent
Households that are owner occupied	15,837	75.7
Male headed households that are owner occupied	12,659	78.7
Female headed households that are owner occupied	3,178	65.9
13.2: Movable Assets	Number	Percent
Households that own a television	2,259	10.8
Households that own a computer	769	3.7
Households that own a bicycle	7,934	37.9
Households that own a radio	10,542	50.4

14: OTHER HOUSEHOLD CHARACTERISTICS

14.1: Main source of information	Number	Percent
Households whose main source of information is a radio	10,886	52.0
Households whose main source of information is a community announcer	803	3.8
Households whose main source of information is a telephone	2,314	11.1
14.2: Household Economy and Welfare	Number	Percent
Households that received remittances from abroad in the last 12 months	4,632	22.1
Households where any member possesses a bank account	4,553	21.8
Households that depend on subsistence farming as a main source of livelihood	14,629	69.9
Households with at least one member engaged in a non-agricultural household based enterprise	15,115	92.7
Households where (members aged 5 years and above) consume less than two meals in a day	1,869	8.9
14.3: Source of Energy for lighting	Number	Percent
Households that have access to electricity	2,836	13.6
Households that use Tadooba for lighting	14,552	69.6

15: HOUSEHOLD BASED AGRICULTURAL ACTIVITIES

15.1: Household based Agricultural activities	Number	Percent
Households engaged in crop growing	15,838	75.7
Households engaged in maize growing	13,479	64.4
Households engaged in coffee growing	43	0.2
Households engaged in growing of beans	6,911	33.0
Households engaged in growing of millet	6,655	31.8
Households engaged in growing of sweet potatoes	3,969	19.0
Households engaged in growing of matooke	1,769	8.5
Households engaged livestock farming	14,807	70.8
Households engaged in either crop growing or livestock farming	17,177	82.1

WEST BUDAMA COUNTY NORTHCONSTITUENCY

LIST OF TABLES

- 1 Population
- 2 Education
- 3 Illiteracy status
- 4 Ownership of a Birth Certificate
- 5 Parental Survival and Orphanhood
- 6 Disability
- 7 Marriage and Child Bearing
- 8 Working Status
- 9 Use of ICT
- 10 Housing Conditions
- 11 Access to Community Services
- 12 Household Health and Hygiene
- 13 Household Assets
- 14 Other Household Characteristics
- 15 Household Based Agricultural Activities

1: POPULATION

1.1: Population Size	Number	Percent
Total population	144,640	
Total male population	70,609	48.8
Total female population	74,031	51.2
Sex ratio (males per 100 females)	95.4	
1.2: Households	Number	Percent
Total households	27,976	
Households headed by males	22,152	79.2
Households headed by females	5,824	20.8
Households headed by children (aged 10-17 years)	66	0.2
Households headed by youth (aged 18-30 years)	5,817	20.8
Households headed by older persons (aged 60 years and above)	5,824	20.8
1.3: Population by Age groups	Number	Percent
Population aged 0-17 years	83,864	58.2
Population aged 18-30 years	26,087	18.1
Population aged 31-59 years	26,271	18.2
Population aged 60 years and over	7,833	5.4
1.4: Population by Special Age groups	Number	Percent
Population aged Less than one Year	5,754	4.0
Population aged 0-4 Years	26,481	18.4
Population aged 0-8 Years	46,545	32.3
Population aged 2-8 Years	35,557	24.7
Population aged 2-17 Years	72,876	50.6
Population aged 6-12 Years	33,233	23.1
Population aged 6-15 Years	45,544	31.6
Population aged 10-15 Years	25,871	18.0
Population aged 10-17 Years	32,694	22.7
Population aged 15-24 Years	27,881	19.4
Population aged 16-64 Years	61,584	42.8
Population aged 15-29 Years	35,110	24.4
Population aged 2 Years and Over	133,067	92.4
Population aged 10 Years and Over	92,885	64.5
Population aged 15 Years and Over	70,778	49.1
Population aged 18 Years and Over	60,191	41.8
Population aged 20 Years and Over	54,142	37.6
Population aged 65 Years and over	5,430	3.8

2: EDUCATION

2.1: Non School attendance of	Number	Percent
Persons aged 6-15 years not attending school	4,387	9.6
Males aged 6-15 years not attending school	2,146	9.2
Females aged 6-15 years not attending school	2,241	10.0
2.2: Persons attending Primary school	Number	Percent
Persons aged 6-12 years attending primary school	28,744	86.5
Males aged 6-12 years attending primary school	14,605	86.3
Females aged 6-12 years attending primary school	14,139	86.7
2.3: Persons attending Secondary school	Number	Percent
Persons aged 13-18 years attending secondary school	5,978	26.6
Males aged 13-18 years attending secondary school	3,485	30.6
Females aged 13-18 years attending secondary school	2,493	22.5
2.4: Persons not in School and Highest Level Completed is below S.4	Number	Percent
Persons aged 15 years and above whose highest level of education completed is below S.4	38,694	88.8
Males aged 15 years and above whose highest level of education completed is below S.4	17,529	84.4
Females aged 15 years and above whose highest level of education completed is below S.4	21,165	92.9
2.5: Persons not in School and Highest Level Completed is "O" Level	Number	Percent
Persons aged 18 years and above whose highest level of education completed is "O" level (S.4)	2,479	4.1
Males aged 18 years and above whose highest level of education completed is "O" level (S.4)	1,597	5.9
Females aged 18 years and above whose highest level of education completed is "O" level (S.4)	882	2.7
2.6: Persons not in School and Highest Level Completed is "A" Level	Number	Percent
Persons aged 20 years and above whose highest level of education completed is "A" level (S.6)	492	0.9
Males aged 20 years and above whose highest level of education completed is "A" level (S.6)	381	1.6
Females aged 20 years and above whose highest level of education completed is "A" level (S.6)	111	0.4

3: ILLITERACY STATUS

3.1: Persons aged 18 years and above	Number	Percent
Persons aged 18 years and above who are illiterate	28,328	47.1
Males aged 18 years and above who are illiterate	9,530	35.1
Females aged 18 years and above who are illiterate	18,798	56.9
3.2: Other age groups	Number	Percent
Persons aged 10-17 years who are illiterate	11,892	36.4
Persons aged 18-30 years who are illiterate	8,387	32.2
Persons aged 60 years and above who are illiterate	5,569	71.1

4: OWNERSHIP OF A BIRTH CERTIFICATE

4.1: Children with birth certificates	Number	Percent
Children less than 1 year who have a birth certificate	1,434	24.9
Children less than 5 years who have a birth certificate	8,502	32.1
Children 0-8 years who have a birth certificate	16,870	36.2
Children 0-17 years who have a birth certificate	32,953	40.9

5: PARENTAL SURVIVAL AND ORPHANHOOD

5.1: Children 0-8 years	Number	Percent
Children 0-8 years who have lost one parent	1,549	3.3
Children 0-8 years who have lost both parents	108	0.2
Children 0-8 years who have lost at least a parent (total number of orphans)	1,657	3.6
Children 0-8 years who have both parents	44,888	96.4
5.2: All children (0-17 years)	Number	Percent
Children 0-17 years who have lost one parent	5,239	6.2
Children 0-17 years who have lost both parents	581	0.7
Children 0-17 years who have lost at least a parent (total number of orphans)	5,820	6.9
Children 0-17 years who have both parents	78,044	93.1

6: DISABILITY

6.1: Persons with a disability	Number	Percent
Persons aged 2 years and above with a disability	18,367	13.8
Persons aged 2 years and above with a seeing disability	8,840	6.6
Persons aged 2 years and above with a hearing disability	5,829	4.4
Persons aged 2 years and above with a walking disability	6,001	4.5
Persons aged 2 years and above with a remembering disability	8,156	6.1
Persons aged 2 years and above with multiple disabilities	5,631	31.8
Children aged 2-17 years with a disability	5,321	7.3
Youth aged 18-30 years with a disability	2,641	10.1
Older persons aged 60 years and above with a disability	4,275	54.6

7: MARRIAGE AND CHILDBEARING

7.1: Marital status of the population	Number	Percent
Persons aged 10 years and above who are married	25,969	52.9
Persons aged 18 years and above who are married	24,543	74.3
Females aged 50 years and above who are widowed	2,978	38.0
Females aged 10-17 years who have ever been married	1,534	9.6
Females aged 10-19 years who have ever been married	3,303	17.2
7.2: Females who have had a birth	Number	Percent
Females aged 12-17 years who have given birth	1,455	12.7
Females aged 12-19 years who have given birth	3,007	20.5

8: WORKING STATUS

8.1: Working persons	Number	Percent
Persons aged 10-15 years who were working	14,246	55.1
Persons aged 10-17 years who were working	18,649	57.0
Persons aged 18-30 years who were working	22,045	84.5
Persons aged 16-64 years who were working	53,078	86.2
Persons aged 18 years and above who were working	52,523	87.3
Persons aged 60 years and above who were working	5,987	76.4
8.2: Youths Not working and not in school		
Youths (Persons aged 18-30 years) who were neither working nor in school	1,510	5.8

9: USE OF ICT

9.1: Mobile phone ownership (10 years and above)	Number	Percent
Persons aged 10 years and above that own at least one mobile phone	20,897	22.5
Males aged 10 years and above that own at least one mobile phone	13,045	29.8
Females aged 10 years and above that own at least one mobile phone	7,852	16.0
9.2: Mobile phone ownership (18-30 years)	Number	Percent
Persons aged 18-30 years and above that own at least one mobile phone	8,052	30.9
Males aged 18-30 years and above that own at least one mobile phone	5,108	42.5
Females aged 18-30 years and above that own at least one mobile phone	2,944	20.9
9.3: Internet Usage (10 years and above)	Number	Percent
Persons aged 10 years and above that use internet	2,958	3.2
Males aged 10 years and above that use internet	1,932	4.4
Females aged 10 years and above that use internet	1,026	2.1
9.4: Internet Usage (18-30 years)	Number	Percent
Persons aged 18-30 years that use internet	1,472	5.6
Males aged 18-30 years that use internet	996	8.3
Females aged 18-30 years that use internet	476	3.4

10: HOUSING CONDITIONS

10.1: Construction Materials For the Dwelling Units	Number	Percent
Households living in dwelling units constructed using permanent roof materials	18,575	66.4
Households living in dwelling units constructed using permanent wall materials	10,730	38.4
Households living in dwelling units constructed using permanent floor materials	4,282	15.3
10.2: Status of Dwelling Units	Number	Percent
Households living in semi-permanent dwelling units	15,503	55.4
Households living in temporary dwelling units	8,720	31.2

11: ACCESS TO COMMUNITY SERVICES

11.1: Access to a Primary school	Number	Percent
Households that are 5 km or more to the nearest primary school, <u>whether public or private</u>	2,085	7.5
Households that are 5 km or more to the nearest <u>public</u> primary school	4,077	14.6
11.2: Access to a Secondary school	Number	Percent
Households that are 5 km or more to the nearest secondary school, <u>whether public or private</u>	6,893	24.6
Households that are 5 km or more to the nearest <u>public</u> secondary school	8,616	30.8
11.3: Access to a Health Facility	Number	Percent
Households that are 5 km or more to the nearest health facility, <u>whether public or private</u>	3,662	13.1
Households that are 5 km or more to the nearest <u>public</u> health facility	5,489	19.6
11.4: Access to a Police post /Police station	Number	Percent
Households that are 5 km or more to the nearest Police Post/Police Station	7,336	26.2

12: HOUSEHOLD HEALTH AND HYGIENE

12.1:Ownership of Mosquito nets	Number	Percent
Households that own at least a mosquito net	27,154	97.1
Households that own at least a mosquito net that was received free (Government /NGO)	26,650	98.1
12.2: Source Of Water For Drinking	Number	Percent
Households that have access to piped water	1,098	3.9
Households that use a bore hole	16,027	57.3
12.3:Ownership of a Toilet facility	Number	Percent
Households without any toilet facility	3,466	12.4
12.4: Other environmental conditions	Number	Percent
Households that <u>properly</u> dispose off solid waste	10,263	36.7
Households which are not living in decent dwellings	27,667	98.9

13: HOUSEHOLD ASSETS

13.1: Owner occupied Dwellings	Number	Percent
Households that are owner occupied	27,060	96.7
Male headed households that are owner occupied	21,557	97.3
Female headed households that are owner occupied	5,503	94.5
13.2: Movable Assets	Number	Percent
Households that own a television	1,052	3.8
Households that own a computer	858	3.1
Households that own a bicycle	12,912	46.2
Households that own a radio	10,619	38.0

14: OTHER HOUSEHOLD CHARACTERISTICS

14.1: Main source of information	Number	Percent
Households whose main source of information is a radio	12,735	45.5
Households whose main source of information is a community announcer	1,852	6.6
Households whose main source of information is a telephone	2,326	8.3
14.2: Household Economy and Welfare	Number	Percent
Households that received remittances from abroad in the last 12 months	4,768	17.0
Households where any member possesses a bank account	2,793	10.0
Households that depend on subsistence farming as a main source of livelihood	25,669	91.8
Households with at least one member engaged in a non-agricultural household based enterprise	18,122	95.0
Households where (members aged 5 years and above) consume less than two meals in a day	1,257	4.5
14.3: Source of Energy for lighting	Number	Percent
Households that have access to electricity	1,498	5.4
Households that use Tadooba for lighting	23,078	82.5

15: HOUSEHOLD BASED AGRICULTURAL ACTIVITIES

15.1: Household based Agricultural activities	Number	Percent
Households engaged in crop growing	26,575	95.0
Households engaged in maize growing	22,435	80.2
Households engaged in coffee growing	168	0.6
Households engaged in growing of beans	15,580	55.7
Households engaged in growing of millet	11,934	42.7
Households engaged in growing of sweet potatoes	10,574	37.8
Households engaged in growing of matooke	4,269	15.3
Households engaged livestock farming	22,946	82.0
Households engaged in either crop growing or livestock farming	26,997	96.5

WEST BUDAMA COUNTY SOUTH CONSTITUENCY

LIST OF TABLES

- 1 Population
- 2 Education
- 3 Illiteracy status
- 4 Ownership of a Birth Certificate
- 5 Parental Survival and Orphanhood
- 6 Disability
- 7 Marriage and Child Bearing
- 8 Working Status
- 9 Use of ICT
- 10 Housing Conditions
- 11 Access to Community Services
- 12 Household Health and Hygiene
- 13 Household Assets
- 14 Other Household Characteristics
- 15 Household Based Agricultural Activities

1: POPULATION

1.1: Population Size	Number	Percent
Total population	144,370	
Total male population	70,154	48.6
Total female population	74,216	51.4
Sex ratio (males per 100 females)	94.5	
1.2: Households	Number	Percent
Total households	27,389	
Households headed by males	21,670	79.1
Households headed by females	5,719	20.9
Households headed by children (aged 10-17 years)	69	0.3
Households headed by youth (aged 18-30 years)	5,790	21.1
Households headed by older persons (aged 60 years and above)	5,562	20.3
1.3: Population by Age groups	Number	Percent
Population aged 0-17 years	84,146	58.4
Population aged 18-30 years	26,876	18.6
Population aged 31-59 years	25,690	17.8
Population aged 60 years and over	7,402	5.1
1.4: Population by Special Age groups	Number	Percent
Population aged Less than one Year	5,488	3.8
Population aged 0-4 Years	26,692	18.5
Population aged 0-8 Years	46,709	32.4
Population aged 2-8 Years	35,895	24.9
Population aged 2-17 Years	73,332	50.9
Population aged 6-12 Years	33,095	23.0
Population aged 6-15 Years	45,602	31.6
Population aged 10-15 Years	26,035	18.1
Population aged 10-17 Years	32,911	22.8
Population aged 15-24 Years	28,122	19.5
Population aged 16-64 Years	61,666	42.8
Population aged 15-29 Years	35,705	24.8
Population aged 2 Years and Over	133,300	92.5
Population aged 10 Years and Over	92,879	64.4
Population aged 15 Years and Over	70,524	48.9
Population aged 18 Years and Over	59,968	41.6
Population aged 20 Years and Over	53,621	37.2
Population aged 65 Years and over	5,178	3.6

2: EDUCATION

2.1: Non School attendance of	Number	Percent
Persons aged 6-15 years not attending school	4,029	8.8
Males aged 6-15 years not attending school	2,048	8.9
Females aged 6-15 years not attending school	1,981	8.8
2.2: Persons attending Primary school	Number	Percent
Persons aged 6-12 years attending primary school	28,518	86.2
Males aged 6-12 years attending primary school	14,249	85.3
Females aged 6-12 years attending primary school	14,269	87.0
2.3: Persons attending Secondary school	Number	Percent
Persons aged 13-18 years attending secondary school	6,506	28.3
Males aged 13-18 years attending secondary school	3,717	32.1
Females aged 13-18 years attending secondary school	2,789	24.3
2.4: Persons not in School and Highest Level Completed is below S.4	Number	Percent
Persons aged 15 years and above whose highest level of education completed is below S.4	40,028	87.8
Males aged 15 years and above whose highest level of education completed is below S.4	17,936	83.5
Females aged 15 years and above whose highest level of education completed is below S.4	22,092	91.7
2.5: Persons not in School and Highest Level Completed is "O" Level	Number	Percent
Persons aged 18 years and above whose highest level of education completed is "O" level (S.4)	2,935	4.9
Males aged 18 years and above whose highest level of education completed is "O" level (S.4)	1,815	6.6
Females aged 18 years and above whose highest level of education completed is "O" level (S.4)	1,120	3.4
2.6: Persons not in School and Highest Level Completed is "A" Level	Number	Percent
Persons aged 20 years and above whose highest level of education completed is "A" level (S.6)	680	1.3
Males aged 20 years and above whose highest level of education completed is "A" level (S.6)	493	2.0
Females aged 20 years and above whose highest level of education completed is "A" level (S.6)	187	0.6

3: ILLITERACY STATUS

3.1: Persons aged 18 years and above	Number	Percent
Persons aged 18 years and above who are illiterate	25,201	42.0
Males aged 18 years and above who are illiterate	8,361	30.6
Females aged 18 years and above who are illiterate	16,840	51.6
3.2: Other age groups	Number	Percent
Persons aged 10-17 years who are illiterate	10,779	32.8
Persons aged 18-30 years who are illiterate	7,233	26.9
Persons aged 60 years and above who are illiterate	4,945	66.8

4: OWNERSHIP OF A BIRTH CERTIFICATE

4.1: Children with birth certificates	Number	Percent
Children less than 1 year who have a birth certificate	1,184	21.6
Children less than 5 years who have a birth certificate	8,224	30.8
Children 0-8 years who have a birth certificate	16,175	34.6
Children 0-17 years who have a birth certificate	31,692	39.2

5: PARENTAL SURVIVAL AND ORPHANHOOD

5.1: Children 0-8 years	Number	Percent
Children 0-8 years who have lost one parent	1,539	3.3
Children 0-8 years who have lost both parents	118	0.3
Children 0-8 years who have lost at least a parent (total number of orphans)	1,657	3.5
Children 0-8 years who have both parents	45,052	96.5
5.2: All children (0-17 years)	Number	Percent
Children 0-17 years who have lost one parent	5,443	6.5
Children 0-17 years who have lost both parents	575	0.7
Children 0-17 years who have lost at least a parent (total number of orphans)	6,018	7.2
Children 0-17 years who have both parents	78,128	92.8

6: DISABILITY

6.1: Persons with a disability	Number	Percent
Persons aged 2 years and above with a disability	22,368	16.8
Persons aged 2 years and above with a seeing disability	10,940	8.2
Persons aged 2 years and above with a hearing disability	6,506	4.9
Persons aged 2 years and above with a walking disability	7,417	5.6
Persons aged 2 years and above with a remembering disability	10,486	7.9
Persons aged 2 years and above with multiple disabilities	7,248	33.8
Children aged 2-17 years with a disability	6,026	8.2
Youth aged 18-30 years with a disability	3,474	12.9
Older persons aged 60 years and above with a disability	4,827	65.2

7: MARRIAGE AND CHILDBEARING

7.1: Marital status of the population	Number	Percent
Persons aged 10 years and above who are married	24,955	50.9
Persons aged 18 years and above who are married	23,684	72.5
Females aged 50 years and above who are widowed	2,853	38.3
Females aged 10-17 years who have ever been married	1,347	8.2
Females aged 10-19 years who have ever been married	2,939	15.0
7.2: Females who have had a birth	Number	Percent
Females aged 12-17 years who have given birth	1,057	8.9
Females aged 12-19 years who have given birth	2,425	16.1

8: WORKING STATUS

8.1: Working persons	Number	Percent
Persons aged 10-15 years who were working	13,746	52.8
Persons aged 10-17 years who were working	18,041	54.8
Persons aged 18-30 years who were working	21,874	81.4
Persons aged 16-64 years who were working	51,604	83.7
Persons aged 18 years and above who were working	50,979	85.0
Persons aged 60 years and above who were working	5,614	75.8
8.2: Youths Not working and not in school		
Youths (Persons aged 18-30 years) who were neither working nor in school	1,755	6.5

9: USE OF ICT

9.1: Mobile phone ownership (10 years and above)	Number	Percent
Persons aged 10 years and above that own at least one mobile phone	24,685	26.6
Males aged 10 years and above that own at least one mobile phone	14,809	33.8
Females aged 10 years and above that own at least one mobile phone	9,876	20.2
9.2: Mobile phone ownership (18-30 years)	Number	Percent
Persons aged 18-30 years and above that own at least one mobile phone	9,921	36.9
Males aged 18-30 years and above that own at least one mobile phone	6,032	48.1
Females aged 18-30 years and above that own at least one mobile phone	3,889	27.1
9.3: Internet Usage (10 years and above)	Number	Percent
Persons aged 10 years and above that use internet	3,911	4.2
Males aged 10 years and above that use internet	2,570	5.9
Females aged 10 years and above that use internet	1,341	2.7
9.4: Internet Usage (18-30 years)	Number	Percent
Persons aged 18-30 years that use internet	1,979	7.4
Males aged 18-30 years that use internet	1,333	10.6
Females aged 18-30 years that use internet	646	4.5

10: HOUSING CONDITIONS

10.1: Construction Materials For the Dwelling Units	Number	Percent
Households living in dwelling units constructed using permanent roof materials	17,115	62.5
Households living in dwelling units constructed using permanent wall materials	10,141	37.0
Households living in dwelling units constructed using permanent floor materials	5,188	18.9
10.2: Status of Dwelling Units	Number	Percent
Households living in semi-permanent dwelling units	13,159	48.0
Households living in temporary dwelling units	9,591	35.0

11: ACCESS TO COMMUNITY SERVICES

11.1: Access to a Primary school	Number	Percent
Households that are 5 km or more to the nearest primary school, <u>whether public or private</u>	1,999	7.3
Households that are 5 km or more to the nearest <u>public</u> primary school	3,481	12.7
11.2: Access to a Secondary school	Number	Percent
Households that are 5 km or more to the nearest secondary school, <u>whether public or private</u>	7,955	29.0
Households that are 5 km or more to the nearest <u>public</u> secondary school	11,842	43.2
11.3: Access to a Health Facility	Number	Percent
Households that are 5 km or more to the nearest health facility, <u>whether public or private</u>	4,223	15.4
Households that are 5 km or more to the nearest <u>public</u> health facility	7,231	26.4
11.4: Access to a Police post /Police station	Number	Percent
Households that are 5 km or more to the nearest Police Post/Police Station	9,261	33.8

12: HOUSEHOLD HEALTH AND HYGIENE

12.1:Ownership of Mosquito nets	Number	Percent
Households that own at least a mosquito net	26,231	95.8
Households that own at least a mosquito net that was received free (Government /NGO)	25,778	98.3
12.2: Source Of Water For Drinking	Number	Percent
Households that have access to piped water	1,824	6.7
Households that use a bore hole	16,002	58.4
12.3:Ownership of a Toilet facility	Number	Percent
Households without any toilet facility	2,589	9.5
12.4: Other environmental conditions	Number	Percent
Households that <u>properly</u> dispose off solid waste	12,534	45.8
Households which are not living in decent dwellings	27,047	98.8

13: HOUSEHOLD ASSETS

13.1: Owner occupied Dwellings	Number	Percent
Households that are owner occupied	25,693	93.8
Male headed households that are owner occupied	20,475	94.5
Female headed households that are owner occupied	5,218	91.2
13.2: Movable Assets	Number	Percent
Households that own a television	1,251	4.6
Households that own a computer	933	3.4
Households that own a bicycle	13,326	48.7
Households that own a radio	11,750	42.9

14: OTHER HOUSEHOLD CHARACTERISTICS

14.1: Main source of information	Number	Percent
Households whose main source of information is a radio	13,636	49.8
Households whose main source of information is a community announcer	1,294	4.7
Households whose main source of information is a telephone	2,481	9.1
14.2: Household Economy and Welfare	Number	Percent
Households that received remittances from abroad in the last 12 months	5,247	19.2
Households where any member possesses a bank account	4,937	18.0
Households that depend on subsistence farming as a main source of livelihood	24,262	88.6
Households with at least one member engaged in a non-agricultural household based enterprise	18,279	94.5
Households where (members aged 5 years and above) consume less than two meals in a day	1,305	4.8
14.3: Source of Energy for lighting	Number	Percent
Households that have access to electricity	1,878	6.9
Households that use Tadooba for lighting	22,018	80.4

15: HOUSEHOLD BASED AGRICULTURAL ACTIVITIES

15.1: Household based Agricultural activities	Number	Percent
Households engaged in crop growing	25,647	93.6
Households engaged in maize growing	21,681	79.2
Households engaged in coffee growing	91	0.3
Households engaged in growing of beans	11,413	41.7
Households engaged in growing of millet	12,739	46.5
Households engaged in growing of sweet potatoes	8,728	31.9
Households engaged in growing of matooke	3,021	11.0
Households engaged livestock farming	22,114	80.7
Households engaged in either crop growing or livestock farming	26,168	95.5

APPENDICES

Appendix 1: Population by Sex and Type of Residence by District, Uganda 2014

Central	Male	Female	Urban	Rural	Total
Buikwe	207,324	215,447	299,628	123,143	422,771
Bukomansimbi	75,109	76,304	12,797	138,616	151,413
Butambala	50,082	50,758	15,553	85,287	100,840
Buvuma	48,414	41,476	9,935	79,955	89,890
Gomba	82,167	77,755	12,439	147,483	159,922
Kalangala	31,349	22,944	4,980	49,313	54,293
Kalungu	89,679	93,553	37,094	146,138	183,232
Kampala	712,762	794,318	1,507,080	0	1,507,080
Kayunga	180,706	187,356	27,061	341,001	368,062
Kiboga	75,847	72,371	33,520	114,698	148,218
Kyankwanzi	111,539	103,154	30,621	184,072	214,693
Luwero	226,805	230,153	95,749	361,209	456,958
Lwengo	133,474	141,479	42,919	232,034	274,953
Lyantonde	46,714	47,039	13,823	79,930	93,753
Masaka	145,552	151,452	103,227	193,777	297,004
Mityana	165,717	163,247	107,645	221,319	328,964
Mpigi	125,404	125,144	43,360	207,188	250,548
Mubende	346,654	337,694	113,803	570,545	684,348
Mukono	289,757	307,047	162,710	434,094	596,804
Nakaseke	104,795	92,578	39,397	157,976	197,373
Nakasongola	93,323	88,472	24,667	157,128	181,795
Rakai	254,366	261,943	34,041	482,268	516,309
Ssembabule	126,084	126,513	16,949	235,648	252,597
Wakiso	949,035	1,048,383	1,681,449	315,969	1,997,418
Eastern	Male	Female	Urban	Rural	Total
Amuria	132,521	138,407	17,385	253,543	270,928
Budaka	100,620	106,977	23,809	183,788	207,597
Bududa	105,820	104,353	13,753	196,420	210,173
Bugiri	185,925	196,988	64,223	318,690	382,913
Bukedea	98,684	104,916	10,927	192,673	203,600
Bukwo	45,058	44,298	12,094	77,262	89,356
Bulambuli	86,108	88,405	16,867	157,646	174,513
Busia	156,447	167,215	54,798	268,864	323,662
Butaleja	119,466	124,687	33,201	210,952	244,153
Buyende	158,615	164,452	23,201	299,866	323,067
Iganga	241,182	263,015	92,792	411,405	504,197
Jinja	230,189	241,053	172,714	298,528	471,242
Kaberamaido	106,042	108,984	4,032	210,994	215,026
Kaliro	115,969	120,230	16,753	219,446	236,199
Kamuli	236,389	249,930	58,984	427,335	486,319
Kapchorwa	51,658	53,528	44,211	60,975	105,186
Katakwi	81,673	84,558	9,280	156,951	166,231
Kibuku	97,476	104,557	17,436	184,597	202,033

Kumi	116,457	122,811	36,493	202,775	239,268
Kween	47,404	46,263	6,462	87,205	93,667
Luuka	113,566	124,454	10,264	227,756	238,020
Manafwa	173,580	180,245	53,837	299,988	353,825
Mayuge	229,252	243,987	33,756	439,483	473,239
Mbale	233,339	255,621	126,544	362,416	488,960
Namayingo	106,303	109,140	15,740	199,703	215,443
Namutumba	123,911	128,646	18,679	233,878	252,557
Ngora	68,414	73,505	15,148	126,771	141,919
Pallisa	188,125	198,765	37,937	348,953	386,890
Serere	139,493	146,410	12,158	273,745	285,903
Sironko	120,862	121,559	34,104	208,317	242,421
Soroti	144,976	151,857	49,685	247,148	296,833
Tororo	250,830	266,250	72,325	444,755	517,080

Northern	Male	Female	Urban	Rural	Total
Abim	52,456	55,510	17,168	90,798	107,966
Adjumani	108,298	116,953	41,064	184,187	225,251
Agago	110,495	117,297	29,153	198,639	227,792
Alebtong	110,989	116,552	6,702	220,839	227,541
Amolatar	73,014	74,152	21,479	125,687	147,166
Amudat	54,246	51,523	11,786	93,983	105,769
Amuru	91,284	95,412	9,302	177,394	186,696
Apac	180,995	187,631	75,300	293,326	368,626
Arua	374,755	407,322	61,962	720,115	782,077
Dokolo	89,476	93,617	20,135	162,958	183,093
Gulu	134,571	141,042	150,306	125,307	275,613
Kaabong	79,207	88,672	11,559	156,320	167,879
Kitgum	99,258	104,790	75,581	128,467	204,048
Koboko	102,250	104,245	57,902	148,593	206,495
Kole	117,164	122,163	8,860	230,467	239,327
Kotido	86,169	94,881	66,454	114,596	181,050
Lamwo	65,106	69,265	21,700	112,671	134,371
Lira	196,663	211,380	101,155	306,888	408,043
Maracha	87,900	98,234	9,291	176,843	186,134
Moroto	49,746	53,686	14,196	89,236	103,432
Moyo	68,940	70,072	10,579	128,433	139,012
Nakapiripirit	74,578	82,112	3,727	152,963	156,690
Napak	65,518	76,706	4,733	137,491	142,224
Nebbi	191,104	205,690	58,069	338,725	396,794
Nwoya	65,969	67,537	13,592	119,914	133,506
Omoro	78,837	81,895	18,952	141,780	160,732
Otuke	51,187	53,067	6,213	98,041	104,254
Oyam	187,121	196,523	18,399	365,245	383,644
Pader	86,635	91,369	13,382	164,622	178,004
Yumbe	230,626	254,196	34,806	450,016	484,822

Zombo	115,824	124,257	43,723	196,358	240,081
Western	Male	Female	Urban	Rural	Total
Buhweju	59,059	61,661	2,956	117,764	120,720
Buliisa	57,801	55,360	7,238	105,923	113,161
Bundibugyo	108,435	115,952	40,219	184,168	224,387
Bushenyi	114,207	120,236	56,070	178,373	234,443
Hoima	287,906	285,080	105,944	467,042	572,986
Ibanda	121,440	128,185	136,860	112,765	249,625
Isingiro	235,621	250,739	58,408	427,952	486,360
Kabale	158,238	173,097	78,585	252,750	331,335
Kabarole	233,648	235,588	158,231	311,005	469,236
Kagadi	171,812	179,221	45,286	305,747	351,033
Kakumiro	147,157	145,951	9,834	283,274	293,108
Kamwenge	202,503	211,951	22,840	391,614	414,454
Kanungu	121,081	131,063	51,008	201,136	252,144
Kasese	338,215	356,772	140,050	554,937	694,987
Kibaale	70,815	70,132	6,650	134,297	140,947
Kiruhura	166,214	161,863	31,874	296,203	328,077
Kiryandongo	132,822	133,375	55,770	210,427	266,197
Kisoro	126,055	155,650	27,611	254,094	281,705
Kyegegwa	140,617	141,020	26,294	255,343	281,637
Kyenjojo	210,599	211,605	64,812	357,392	422,204
Masindi	148,121	142,992	94,438	196,675	291,113
Mbarara	230,082	242,547	195,318	277,311	472,629
Mitooma	86,484	96,960	11,396	172,048	183,444
Ntoroko	34,038	32,967	23,789	43,216	67,005
Ntungamo	232,469	251,372	71,485	412,356	483,841
Rubanda	92,011	104,885	26,669	170,227	196,896
Rubirizi	61,765	67,384	17,274	111,875	129,149
Rukungiri	150,016	164,678	43,576	271,118	314,694
Sheema	99,225	108,118	110,256	97,087	207,343

Appendix 2: The Household Questionnaire for the National Population and Housing Census 2014



Republic of Uganda National Population and Housing Census 2014 HOUSEHOLD QUESTIONNAIRE



BOOK NUMBER

IDENTIFICATION PARTICULARS

WRITE NAME IN CAPITAL LETTERS		CODE
DISTRICT:		
COUNTY/MUNICIPALITY:		
SUB COUNTY/DIVISION/TOWN COUNCIL:		
PARISH/WARD:		
LC1:		
EA:		

		Code
ENUMERATOR'S NAME AND CODE:		
ENUMERATOR'S SIGNATURE:		
DATE: (dd/mm/yyyy):		
PARISH SUPERVISOR'S NAME AND CODE:		
PARISH SUPERVISOR'S SIGNATURE:		
DATE: (dd/mm/yyyy):		

A

 UGANDA BUREAU OF STATISTICS, P.O. Box 7186, Kampala, UGANDA. Tel: +256-414-706000. Fax: +256-414-237553. Email: ubos@ubos.org Website: www.ubos.org

Hello, my name is
.....
and I work with Uganda Bureau of Statistics (UBOS). We are conducting the National Population and Housing Census 2014. We are visiting each and every household in the country collecting information about individuals and the homesteads they live in. It takes about 40 minutes to complete the interview. Whatever information you provide will be kept strictly confidential. We would very much appreciate your participation and co-operation in this Census.

Result Code (R1)		Ethnicity (P8)				Religion (P9)		Section 5: Crop Codes	
1 Completed	2 Partially Completed	3 Not interviewed							
Relationship (P2)		Country Of Citizenship For Non-Ugandans				Religion (P9)		Section 5: Crop Codes	
10 Usual head of hh - Absent	11 Usual head of hh - Present	12 Spouse	13 Biological Son	14 Biological Daughter	15 Step son	16 Step daughter	17 Grandson	18 Grand daughter	19 Parent to head or spouse
20 Brother or Sister to head or spouse	21 Other relative	22 Non relative							
Residential Status (P4)		Major Field of Specialization (P20)				Type of Disability (P14-P17)		Occupation (P23)	
1 Usual household member	2 Regular household member	3 Visitor/Guest							
Grade Completed (P19)		Type of Disability (P14-P17)				School Attendance (P18)		Occupation (P23)	
01 Never been to school	02 Did not complete Pre-Primary	03 Completed Pre-Primary	04 In P1 but did not complete / attend Pre-Primary	10 Did not complete P1	11 P1	12 P2	13 P3	14 P4	15 P5
16 P6	17 P7	21 J1-J3	31 S1	32 S2	33 S3	34 S4	35 S5	36 S6	41 Professional Certificate
42 Diploma	43 First Degree	44 Post Graduate Certificate	45 Post Graduate Diploma	46 Masters Degree	47 PhD	96 Other	97 NA		
Activity Status (P22)		Marital Status (P26)				Occupation (P23)		Occupation (P23)	
10 Working for pay	11 Employer	12 Own account worker	13 Helping without pay in hh business	14 Volunteer	15 An apprentice (not paid)	16 Looking for work	17 Not working and not looking for work	18 Household chores	19 Full time student
20 Retired/pensioner	21 Too old to work	22 To young to work	96 Other	97 NA					
Marital Status (P26)		Occupation (P23)				Occupation (P23)		Occupation (P23)	
1 Never married	2 Currently married/Cohabiting (Monogamous)	3 Currently married/Cohabiting (Polygamous)	4 Widowed	5 Separated	6 Divorced	7 NA	8 Don't Know		
Occupation (P23)		Occupation (P23)				Occupation (P23)		Occupation (P23)	
10 Subsistence Agricultural Workers	11 Agricultural, fishery and related labourers	12 Subsistence animal rearing	13 Retailers of food and beverages	14 Retailers of general merchandise and domestic wares	15 Market oriented gardeners and crop growers	16 Primary education teaching associate professionals	17 Restaurant services workers and cooks	18 General laborers	19 Stall and market salespersons
20 Domestic helpers e.g. house girls	21 Motor Vehicle Drivers	22 Boda boda riders (motor cycle)	23 Boda boda riders (bicycle)	24 Foods and related products processing trades workers	25 Street vendors and related workers e.g. food, hawkers, tel. sales	26 Other personal services workers e.g. hair dressers, barbers	27 Construction laborers	28 Textiles, footwear and other personal effects goods	29 Builders, brick layers, masons and other related workers
30 Building finishers and related trades workers	31 Subsistence fishery and related workers	32 Carpenters, cabinet makers, joiners, brush makers etc.	33 Forestry and related workers	34 Fashion and Other models sales persons and demonstrators	35 Textiles and garment trades workers (including tailors)	36 Machinery mechanics and fitters	37 Manufacturing laborers	38 Nurses and Midwives	39 Produce buyers
40 Secondary education teaching professionals	41 Protective service workers, policemen, police wardens	42 Dealers in agricultural and farm Products	43 Messengers, watchers and security workers						
Occupation (P23)		Occupation (P23)				Occupation (P23)		Occupation (P23)	
44 Market-oriented crop and animal producers	45 Experienced non-professionals in teaching	46 Market oriented fishery workers, hunters, and trappers	47 Transport laborers	48 Foremen, supervisors in elementary occupation services	49 Travel attendants, guides, conductors,	50 Market-oriented animal producers	51 Cashier, teller, and related clerks, money lender, debt collectors	52 Metal molders, welders, sheet metal workers, structural and metal prepares	53 Numerical clerks (Statistical, finance, book keeping and accounting)
54 Handicraft workers in wood, textiles, and related materials	55 Secretaries and Keyboard operating clerks	56 Post-primary education teaching associate professionals	57 retailers of human drugs	58 Traditional medicine practitioners and faith healers	59 Medical assistants	60 Laborers in mining	61 Pre-primary Education Teaching associate professionals	62 Physical science and engineering technicians	63 Electrical and electronic Instrument mechanics and fitters
64 Other street elementary occupation services e.g. shoe polisher, car washers	65 Religion professionals (ordained catechist)	66 Computer assistants and computer equipment operators	67 Finance and sales associate professionals	68 Accountants, business administrators, and business professionals	69 Public and private administrative associate professionals	70 Client Information Clerks	96 Others	97 N/A	

78

79

80

DD4

HOUSEHOLD NUMBER



SECTION 2: HOUSING CONDITIONS

SECTION 3: COMMUNITY SERVICES

SECTION 4: HOUSEHOLD CHARACTERISTICS

What source of **energy** does this household **mainly** use for lighting?

H14

10 = Electricity- National grid (Umeme)
 11 = Electricity- Solar
 12 = Electricity- Personal Generator
 13 = Electricity- Community/thermal plant
 14 = Gas
 15 = Liquefied Petroleum Gas (LPG)
 16 = Biogas
 17 = Paraffin-Lantern
 18 = Paraffin-Tadooba
 19 = Candles
 20 = Firewood
 21 = Cow Dung
 22 = Grass (reeds)
 96 = Other

What is the occupancy tenure of the dwelling unit?	What type of dwelling unit does this household occupy?	How many rooms were used on the Census Night for sleeping?	Types of materials mainly used for construction of the roof	Types of materials mainly used for construction of the wall	Types of materials mainly used for the floor
H1	H2	H3	H4	H5	H6
10 = Owner occupied 11 = Free Public 12 = Free Private 13 = Subsidized public 14 = Subsidized private 15 = Rented public 16 = Rented private 96 = Other	10 = Detached house (single or multi-storey) 11 = Semi-Detached house 12 = Flat in a Block of Flats 13 = Room or rooms of a Main House 14 = Servants Quarters 15 = Tenement (Muzigo) 16 = Garage 17 = Go down/Basement 18 = Store 96 = Other	If 9 or more were used, record 9	10 = Iron sheets 11 = Tiles 12 = Asbestos 13 = Concrete 14 = Tins 15 = Thatch 96 = Other	10 = Concrete/Stones 11 = Cement Blocks 12 = Burnt/Stabilised bricks 13 = Unburnt bricks with Cement 14 = Unburnt bricks with mud 15 = Wood 16 = Mud and Pole 17 = Tin/Iron sheets 96 = Other	10 = Earth 11 = Rammed earth 12 = Cement screed 13 = Concrete 14 = Tiles 15 = Brick 16 = Stone 17 = Wood 96 = Other

What is the distance from home to the nearest on foot, irrespective of whether you use the service or not

(Record distance in kms, if distance is given in miles, refer to code list H7-H13)

H7 Public Health Facility			.		H11 Public Secondary School			.	
H8 Private Health Facility			.		H12 Private Secondary School			.	
H9 Public Primary School			.		H13 Police Station / Police Post			.	
H10 Private Primary School			.						

SECTION 4: HOUSEHOLD CHARACTERISTICS (CONTINUED)

What source of energy does this household mainly use for cooking?	What is the household's main source of water for drinking?	What is the distance to this source of water ?	What type of toilet facility does this household mainly use?	Does the Household share this toilet facility with other households?	What is the most commonly used method of solid waste disposal from the household?	What type of bathroom does this household mainly use?	What type of kitchen does this household mainly use?
H15	H16	H17	H18	H19	H20	H21	H22
10 = Electricity- National grid (Umeme) 11 = Electricity- Solar 12 = Electricity- Personal Generator 13 = Electricity- Community/thermal plant 14 = Gas 15 = Liquefied Petroleum Gas (LPG) 16 = Biogas 17 = Paraffin-Stove 18 = Charcoal 19 = Firewood 20 = Cow Dung 21 = Grass (reeds) 96 = Other	10 = Piped water into dwelling 11 = Piped water to the yard 12 = Public Taps 13 = Borehole in yard/plot 14 = Public borehole 15 = Protected well/spring 16 = Unprotected well/spring 17 = River/Stream/Lake 18 = Vendor 19 = Tanker Truck 20 = Gravity Flow Scheme 21 = Rain Water 22 = Bottled Water 96 = Other	(Record distance in kms, if distance is given in miles, see distance conversion list) If the water source is on premises, record 0.0	10 = Flush Toilet 11 = VIP Latrine 12 = Covered Pit Latrine <u>with a slab</u> 13 = Covered Pit Latrine <u>without a slab</u> 14 = Uncovered Pit Latrine <u>with a slab</u> 15 = Uncovered Pit Latrine <u>without a slab</u> 16 = Ecosan (compost toilet) 17 = No facility, bush, polythene bags, bucket, etc 96 = Other	1 = Yes 2 = No 7 = N/A (For "No Facility, Bush, Polythene bags, bucket etc)	10 = Occupants dispose solid waste in the garden, and DO NOT burn or bury it. 11 = Occupants burn solid waste 12 = Occupants bury solid waste 13 = Occupants dispose solid waste in a local dump supervised by urban authorities 14 = Occupants dispose solid waste in a local dump NOT supervised by urban authorities 15 = Solid waste collected by waste vendor 16 = Occupants dispose solid waste into river/sea/stream/pond 96 = Other arrangements	10 = Inside, drainage provided 11 = Inside, no drainage provided 12 = Outside built, drainage provided 13 = Outside built, no drainage provided 14 = Make shift 15 = None 96 = Other	10 = Inside, specific room 11 = Inside, no specific room 12 = Outside, built 13 = Make shift 14 = Open space

HOUSEHOLD ASSETS

INFORMATION

POSTAL SERVICES

MOSQUITO NETS

SOURCE OF LIVELIHOOD

REMITTANCES

Does any member of this household own..... (ASSETS)? If Yes, record the number, if 9 or more, write 9 If none, record 0	What is the household's main source of information?	Did any member of this household send/receive a letter/parcel by postal services during the last 12 months?	Does this household have any mosquito nets ?	IF YES IN H26, were the mosquito nets given free or were they bought ? Record the appropriate code in the boxes below 1 = Yes; 2 = No; 7 = NA; 8 = DK	What was the main source of the household's livelihood in the last 12 months?	Did the household receive any money or physical items from any relative / family member / friend abroad during the last 12 months?	IF YES IN H29, in which countries do the relatives / family members / friends reside ? 1 = Yes; 2 = No; 7=N/A
H23	H24	H25	H26	H27	H28	H29	H30
A: Motor vehicle	G: Television	10 = Radio 11 = Word of Mouth 12 = Telephone 13 = Print Media 14 = Post Mail 15 = Hand Mail 16 = Television 17 = Community Meetings	1 = Yes 2 = No	A=Given free by Gov't	10 = Subsistence farming 11 = Commercial farming 12 = Employment income 13 = Business Enterprise 14 = Cottage Industry 15 = Property Income	1 = Yes, both goods and money 2= Yes, Money only 3 = Yes, Goods only 4 = No 8 = DK	A. Australia
B: Motor cycle	H: Radio	1 = Yes, Once 2 = Yes, Twice 3 = Yes, Thrice 4 = Yes, 4 times and above 5 = No 8 = Don't Know		B= Given free by NGO	16 = Family / Friends / Relatives		B. Canada
C: Bicycle	I: Fixed Phone	18 = Internet		C= Given free by friend/relative	17 = Institutional or Program support (e.g Red Cross, WFP, e.t.c)		C. France
D: Wheel Chair	J: Computer / Laptop	19 = Community Announcer		D= Bought	18 = Sale of assets		D. Germany
E: Canoe / Boat	K: Generator	96 = Other			96 = Other		E. India
F: Donkey							F. Japan
							G. Kenya
							H. Libya
							I. Saudi Arabia
							J. South Africa
							K. U.K
							L. U.S.A
							M. Sweden
							N. United Arab Emirates
							O. Yemen
							P. South Sudan
							X. Other country
							Y. Don't know country of origin

BOOK NUMBER		SHEET NUMBER 03		HOUSEHOLD NUMBER							
SECTION 4: HOUSEHOLD CHARACTERISTICS (CONTINUED)						SECTION 5: AGRICULTURAL MODULE					
H31 Does any member in this household have a functional account in the Bank or any other financial institution? (Active in last 12 months) 1= Yes, have an account in the Bank 2= Yes, have an account in another financial institution 3= Yes, have both in a bank and another financial institution 4= No 8= DK	H32 How many meals do household members aged 5 years and above usually eat on average per day ? (Record number of meals in the box provided)	H33 Does every member in this household use soap to bathe? 1 = Yes 2 = No 8 = DK	H34 Did every member in this household take sugar (at least once a day) during the last week? 1 = Yes 2 = No 8 = DK	H35 Do you have salt in the house now? 1 = Yes 2 = No 8 = DK	H36 Does every member in this household have at least two sets of clothing? 1 = Yes 2 = No 8 = DK	H37 Does every member in this household have at least one pair of shoes? WITH EXCEPTION OF CHILDREN AGED ONE YEAR OR LESS 1 = Yes 2 = No 8 = DK	H38 Does every child in this household (i.e. all those under 18 years) have a separate blanket ? 1=Yes 2=No 7=N/A	A1 Does this household currently undertake any of the following agricultural activities 1 =Yes, within EA 2 =Yes, outside EA but within District 3 = No I. Exotic / Cross breed cattle II. Local cattle rearing III. Goat rearing IV. Sheep rearing V. Piggery (pig rearing) VI Poultry/Birds keeping VII. Rabbit rearing VIII. Apiculture (Bee keeping) IX. Aquaculture (fish farming) X. Presence of Forest / wooded land XI. Crop growing	A2 IF YES IN A1, how many does this household own?	A3 IF YES IN A1, what is the main purpose of production? 1=Home Consumption 2=Sale 7=N/A	A4 List the crops grown on the holding in order of importance Ser. No. Crop Name Crop Code If no crop grown, write 97
H39 Is any member of the household involved in any household-based enterprise ? 1 = Yes 2 = No		H40 What is the nature of the enterprise? (If the household has more than one enterprise, record the one considered by the family as the most important) 10 Agriculture 11 Trade 12 Food processing 13 Other manufacturing 14 Services 15 Hotels and Restaurant 16 Mining and Quarrying 96 Other 97 No enterprise									
SECTION 6: DEATHS IN THE HOUSEHOLD IN THE LAST 12 MONTHS											
D1 Did any deaths occur in this household in the last 12 months? I mean from September 2013 upto December 2013. What about from 1st January 2014 to 27th August 2014?	D2 What was the name of the deceased? If no death in D1, write "Not Applicable" and end Interview	D3 What was the sex of [NAME]? 1 = Male 2 = Female 7 = N/A	D4 How old was [NAME] at the time of death (in completed years)? If age is less than one year, write 00	D5 What was the cause of [NAME'S] death? 1 = Disease 2 = Accident 3 = Violence 4 = Witchcraft 6 = Others 7 = N/A 8 = DK	D6 Was [NAME] pregnant at the time of her death? 1= Yes 2= No 7= N/A 8= DK	D7 Did [NAME] die while giving birth? 1= Yes 2= No 7= N/A 8= DK	D8 Did [NAME] die within 6 weeks after delivery? 1= Yes 2= No 7= N/A 8= DK	If there is any "YES" in A1, ask Question A5, otherwise write 97 in Question A5			
								A5 Which of the household members is the lead holder? (Record the person number of holder from P0) If not listed, record 00	A6 Does the holding carry out any type of irrigation? 1=Yes 2=No 7=N/A	A7 Does this household own agricultural land? 1 = Yes 2 = No	

DISTRICT OF PREVIOUS RESIDENCE (P12)					H7-H13, H17			
Central	Eastern	Northern	Western	Country of Previous Residence	Distance Conversion			
					1 mile = 1.6 km			
101 Kalangala	201 Bugiri	301 Adjumani	401 Bundibugyo	671 Kenya	Mile	Km	Mile	Km
102 Kampala	202 Busia	302 Apac	402 Bushenyi	672 Tanzania	0.5 =	0.8	16.5 =	26.4
103 Kiboga	203 Iganga	303 Arua	403 Hoima	673 Rwanda	1.0 =	1.6	17.0 =	27.2
104 Luwero	204 Jinja	304 Gulu	404 Kabale	674 Burundi	1.5 =	2.4	17.5 =	28.0
105 Masaka	205 Kamuli	305 Kitgum	405 Kabarole	675 South Sudan	2.0 =	3.2	18.0 =	28.8
106 Mpigi	206 Kapchorwa	306 Kotido	406 Kasese	676 Dem. Rep. Of Congo	2.5 =	4.0	18.5 =	29.6
107 Mubende	207 Katakwi	307 Lira	407 Kibaale	677 Somalia	3.0 =	4.8	19.0 =	30.4
108 Mukono	208 Kumi	308 Moroto	408 Kisoro	678 Other Africa	3.5 =	5.6	19.5 =	31.2
109 Nakasongola	209 Mbale	309 Moyo	409 Masindi	681 United Kingdom	4.0 =	6.4	20.0 =	32.0
110 Rakai	210 Pallisa	310 Nebbi	410 Mbarara	682 Other Europe	4.5 =	7.2	20.5 =	32.8
111 Sembabule	211 Soroti	311 Nakapiripirit	411 Ntungamo	683 Asia 684 USA	5.0 =	8.0	21.0 =	33.6
112 Kayunga	212 Tororo	312 Pader	412 Rukungiri	685 Canada	5.5 =	8.8	21.5 =	34.4
113 Wakiso	213 Kaberamaido	313 Yumbe	413 Kamwenge	686 Central & Latin America	6.0 =	9.6	22.0 =	35.2
114 Lyantonde	214 Mayuge	314 Abim	414 Kanungu	687 Australia	6.5 =	10.4	22.5 =	36.0
115 Mityana	215 Sironko	315 Amolatar	415 Kyenjojo	688 Oceania	7.0 =	11.2	23.0 =	36.8
116 Nakaseke	216 Amuria	316 Amuru	416 Buliisa	689 Non-Ugandan-Not Stated	7.5 =	12.0	23.5 =	37.6
117 Buikwe	217 Budaka	317 Dokolo	417 Ibanda		8.0 =	12.8	24.0 =	38.4
118 Bukomasimbi	218 Bududa	318 Kaabong	418 Isingiro		8.5 =	13.6	24.5 =	39.2
119 Butambala	219 Bukedea	319 Koboko	419 Kiruhura		9.0 =	14.4	25.0 =	40.0
120 Buvuma	220 Bukwo	320 Maracha	420 Buhweju		9.5 =	15.2	25.5 =	40.8
121 Gomba	221 Butaleja	321 Oyam	421 Kiryandongo		10.0 =	16.0	26.0 =	41.6
122 Kalungu	222 Kaliro	322 Agago	422 Kyegegwa		10.5 =	16.8	26.5 =	42.4
123 Kyankwanzi	223 Manafwa	323 Alebtong	423 Mitooma		11.0 =	17.6	27.0 =	43.2
124 Lwengo	224 Namutumba	324 Amudat	424 Ntoroko		11.5 =	18.4	27.5 =	44.0
	225 Bulambuli	325 Kole	425 Rubirizi		12.0 =	19.2	28.0 =	44.8
	226 Buyende	326 Lamwo	426 Sheema		12.5 =	20.0	28.5 =	45.6
	227 Kibuku	327 Napak			13.0 =	20.8	29.0 =	46.4
	228 Kween	328 Nwoya			13.5 =	21.6	29.5 =	47.2
	229 Luuka	329 Otuke			14.0 =	22.4	30.0 =	48.0
	230 Namayingo	330 Zombo			14.5 =	23.2	30.5 =	48.8
	231 Ngora				15.0 =	24.0	31.0 =	49.6
	232 Serere				15.5 =	24.8	31.5 =	50.4
					16.0 =	25.6	32.0 =	51.2