



## UGANDA CONSUMER PRICE INDEX (2016/17=100)

NOVEMBER 2024



UGANDA BUREAU OF STATISTICS



P.O. Box 7186, Kampala;  
Tel: 0414 – 706000;  
Fax: 0414 – 237553;  
Email: [ubos@ubos.org](mailto:ubos@ubos.org);  
Website: [www.ubos.org](http://www.ubos.org)



## FOREWORD

This publication provides the monthly Consumer Price Indices for Uganda (Composite) and for the ten centres of Kampala High Income, Kampala Middle Income, Kampala Low Income, Jinja, Mbale, Masaka, Mbarara, Fortportal, Gulu and Arua. All the baskets are for the urban households.

The current Consumer Price Index has been rebased from 2009/2010 to 2016/2017, using weights derived from the Uganda National Household Survey (UNHS VI) that was conducted from July 2016 to June 2017. The rebased CPI is classified using international standards, referred to as Classification of Individual Consumption According to Purpose (COICOP 2018). This is a shift from the COICOP 1999 that was used in the earlier series. COICOP 2018 is more detailed than the previous (1999) version, responding to the users' need for more detail, and addresses several other issues that required revision of the classification. The new COICOP of 2018 reflects the significant changes in goods and services in some areas, improved links of COICOP to other classifications, and addresses emerging statistical and policy needs of regional and international users.

At the elementary aggregate (EA) level, the indices are computed using the Jevons (Geometric Mean) method for all items within the elementary aggregates. The modified Laspeyres index formula is used to compute higher level indices. The National CPI is computed as a weighted average of the ten centres mentioned above and rebased indices are available from July 2017 to date at EA level.



Chris N. Mukiza (PhD)

**EXECUTIVE DIRECTOR/CHIEF STATISTICIAN**

## ACRONYMS AND DEFINITIONS

**COICOP:** Classification of Individual Consumption According to Purpose, is a nomenclature developed by the United Nations Statistics Division to classify and analyse individual consumption expenditures incurred by households, non-profit institutions serving households and general government according to their purpose.

**CPI:** Consumer Price Index - a general indicator of price levels paid by households for consumer goods and services.

**CPI basket:** A commonly used term for the goods and services priced for the purpose of compiling the CPI.

**Elementary aggregate (EA):** The lowest level of commodity classification in the CPI, and the only level for which index numbers are constructed by direct reference to price data.

**Inflation:** A term commonly used to refer to changes in price levels. A rise in prices is called inflation, and a persistent fall is called deflation.

**Jevons price index:** An elementary price index defined as the un-weighted geometric average of the sample price relatives. It can also be defined as the un-weighted geometric average of the current to base period price relatives.

**Laspeyres price index:** The Laspeyres price index is an index formula used in price statistics for measuring the price development of the basket of goods and services consumed in the base period. The question it answers is how much a basket that consumers bought in the base period would cost in the current period.

**Outlet:** The interface between a supplier of products and the consumer. It may be a shop, a market stall, a catalogue, a website etc. Also referred to as a "retail outlet", although it can include wholesale outlets which also sell directly to the consumers

**Outlier:** A term used to describe any extreme value in a set of data, such as a price or price relative that requires further investigation or has been verified as incorrect

**Price relative:** A measure of price movements: the ratio of the price level in one period to the price level in another.

**Reference base:** The period in which the CPI is given a value of 100.0. The CPI is currently on a reference base of 2016/17.

**Weight:** The measure of the importance of an item in the index regimen relative to the other items. Weights can be expressed in either quantity or value terms. Value weights are used in the CPI.

## TABLE OF CONTENTS

FOREWORD .....	I
ACRONYMS AND DEFINITIONS .....	II
TABLE OF CONTENTS .....	III
1.0 HIGHLIGHTS OF UGANDA CPI FOR NOVEMBER 2024 .....	1
Table 5: Overall Monthly CPI and Rates of Inflation (Base: 2016/17=100) .....	6
Table 7: National Average Retail Prices of Selected Commodities .....	9
<b>ANNEX 1: ANNUAL INFLATION BY COICOP DIVISIONS .....</b>	<b>11</b>
01 Food and Non-Alcoholic Beverages .....	11
02 Alcoholic Beverages, Tobacco & Narcotics .....	11
03 Clothing and Footwear .....	12
04 Housing, Water, Electricity, Gas and other Fuels .....	12
05 Furnishings, Household Equipment and Routine Household Maintenance .....	13
06 Health .....	13
07 Transport .....	13
08 Information and Communication .....	14
09 Recreation, Sport and Culture .....	14
10 Education Services .....	14
11 Restaurants and Accommodation Services .....	15
12 Insurance and Financial Services .....	15
13 Personal Care, Social Protection and Miscellaneous Goods .....	15
<b>ANNEX 2: MONTHLY INFLATION BY COICOP DIVISIONS .....</b>	<b>16</b>
01 Food and Non-Alcoholic Beverages .....	16
02 Alcoholic Beverages, Tobacco & Narcotics .....	16
03 Clothing and Footwear .....	16
04 Housing, Water, Electricity, Gas and other Fuels .....	16
05 Furnishings, Household Equipment and Routine Household Maintenance .....	17
06 Health .....	17
07 Transport .....	17
08 Information and Communication .....	18
09 Recreation, Sport and Culture .....	18
10 Education Services .....	18
11 Restaurants and Accommodation Services .....	19
12 Insurance and Financial Services .....	19
13 Personal Care, Social Protection and Miscellaneous Goods .....	19

## LIST OF FIGURES

TABLE 8: UGANDA CONSUMER PRICE INDEX (CPI) AND INFLATION FOR CORE, FOOD CROPS, & EFU: (2016/17) = 100 .....	20
TABLE 9: ENERGY FUEL AND UTILITIES (EFU) INDEX, ANNUAL AND MONTHLY % CHANGES, (2016/17) = 100.....	21
TABLE 10: UGANDA ANNUAL INFLATION BY COICOP DIVISIONS (NOVEMBER 2023 – NOVEMBER 2024).....	A
TABLE 11: UGANDA MONTHLY INFLATION BY COICOP DIVISIONS (NOVEMBER 2023 – NOVEMBER 2024).....	B
TABLE 12: UGANDA CONSUMER PRICE INDEX (CPI) BY COICOP DIVISION: (2016/17) = 100.....	C
TABLE 13: UGANDA CONSUMER PRICE INDEX (CPI) AND INFLATION FOR CORE & NON CORE: (2016/17) = 100.....	D
TABLE 14: UGANDA CONSUMER PRICE INDEX (CPI) AND INFLATION FOR FOOD & NON FOOD: (2016/17) = 100.....	E
TABLE 15: UGANDA CONSUMER PRICE INDEX (CPI) AND INFLATION FOR FOOD CROPS, OTHER GOODS, SERVICES AND ENERGY FUEL & UTILITIES: (2016/17) = 100. ....	F
TABLE 16: UGANDA ANNUAL AND MONTHLY INFLATION BY INCOME GROUPS AND GEOGRAPHICAL AREAS : .....	G
TABLE 17: UGANDA CONSUMER PRICE INDEX (CPI) BY INCOME GROUPS AND GEOGRAPHICAL AREAS : (2016/17) = 100.....	H

## 1.0 HIGHLIGHTS OF UGANDA CPI FOR NOVEMBER 2024

### 1.1 Annual Headline Inflation

The Annual Inflation as measured by the Consumer Price Index for Uganda for the 12 months to November 2024 is 2.9 percent, same rate registered in the year ended October 2024.

Annual Core Inflation registered 3.8 percent in the year ending November 2024 compared to 3.9 percent that was recorded in the year ended October 2024. This was mainly due to Annual Services Inflation that recorded 5.9 percent in November 2024 compared to 6.2 percent registered in October 2024. The main driver of Services Inflation was Passenger Transport Services Inflation that registered 2.4 percent in the year ending November 2024 compared to 3.8 percent registered in the year ended October 2024. The other driver was Inpatient Care Services Inflation registered 6.6 percent in the year ending November 2024 compared to 17.9 percent registered in the year ended October 2024. In addition, Annual Other Goods Inflation recorded 2.2 percent in the year ending November 2024 compared to 2.1 percent registered in the year ended October 2024. This was mainly due to Maize Flour prices that registered minus 18.2 percent in November 2024 compared to minus 24.6 percent registered in October 2024 and Tilapia (Fresh) prices that registered 17.2 percent in November 2024 compared to 10.6 percent registered in October 2024.

Annual Energy Fuel and Utilities (EFU) Inflation recorded 2.2 percent in the year ending November 2024 compared to 3.3 percent registered in the year ended October 2024. This was mainly due to Liquid Energy Fuels Inflation that recorded minus 7.8 percent in the year ending November 2024 compared to minus 5.4 percent registered in the year ended October 2024, driven mainly by Petrol and Diesel prices that decreased on an annual basis in November 2024 by minus 9.4 percent compared to minus 5.9 percent in October 2024 and minus 8.3 percent compared to minus 7.5 percent in October 2024 respectively. Kerosene prices decreased by minus 3.7 percent compared to minus 2.4 percent in October 2024. In addition, Solid fuels inflation recorded 14.5 percent in November 2024 compared to 15.5 percent registered in October 2024 mainly due to Charcoal prices that increased by 13.9 percent in November 2024 compared to 17.0 percent recorded in October 2024 whereas firewood prices increased by 16.8 percent compared to 13.3 percent in October 2024.

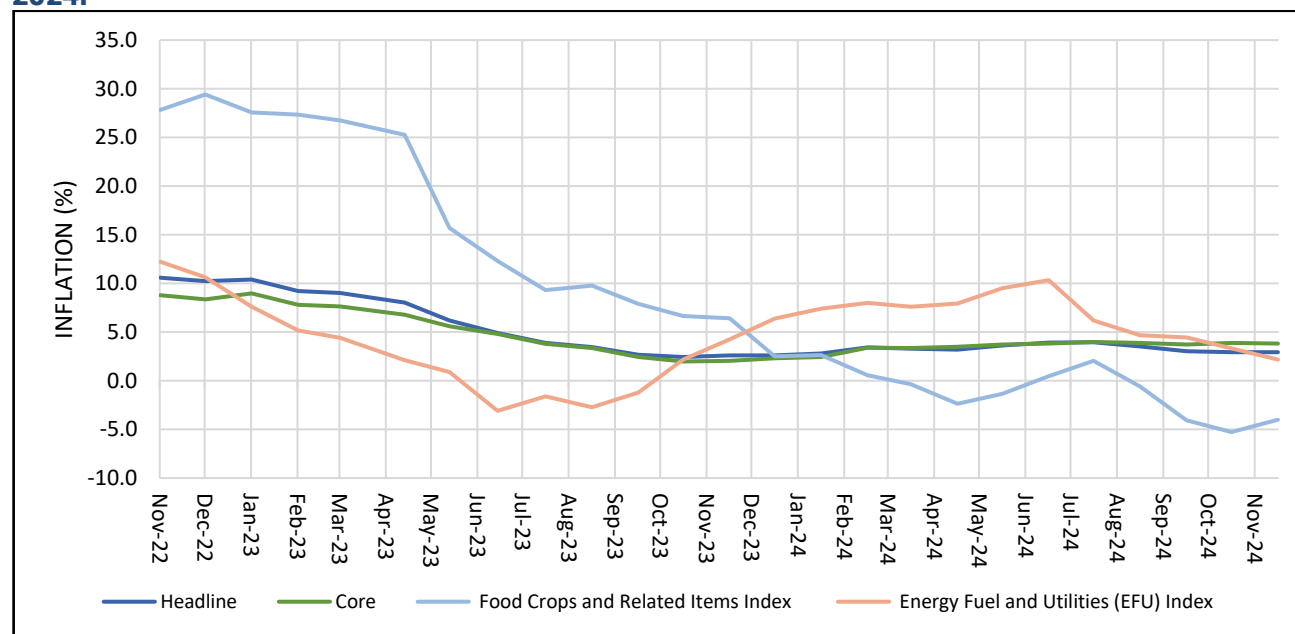
Annual Food Crops and Related Items Inflation recorded minus 4.0 percent in the year ending November 2024 compared to minus 5.3 percent registered in the year ended October 2024. This was mainly attributed to a drop in the prices of Tomatoes (by minus 27.1 percent compared to minus 14.2 percent in October 2024), Carrots (by minus 11.2 percent compared to minus 4.7 percent in October 2024) and Fresh Leaf Vegetables - Nakati, Dodo, Bbugga prices increasing by 0.6 percent compared to 6.3 percent in October 2024, Bananas Standard (Bogoya) prices increasing by 1.1 percent compared to 5.7 percent in October 2024.

Table 1 shows Annual Headline Inflation and its categories for October 2024 and November 2024.

**Table 1: Annual Headline, Core, Food Crops and EFU Inflation for October 2024 and November 2024.**

Description	Weights	October 2024	November 2024
<b>Headline</b>	<b>1000.00</b>	<b>2.9</b>	<b>2.9</b>
<b>Core</b>	<b>839.62</b>	<b>3.9</b>	<b>3.8</b>
Other Goods	455.51	2.1	2.2
Services	384.11	6.2	5.9
<b>Food Crops and Related Items</b>	<b>95.10</b>	<b>-5.3</b>	<b>-4.0</b>
<b>Energy Fuel and Utilities (EFU)</b>	<b>65.28</b>	<b>3.3</b>	<b>2.2</b>

**Figure 1: Annual Headline, Core, Food crops and EFU Inflation: November 2022 – November 2024.**



The overall Annual Consumer Price Indices for the 12 months to November 2024 are shown in Table 2 below.

**Table 2: Overall Annual CPI and Inflation (Base: 2016/17=100)**

Month	Overall CPI	Annual Inflation
November 2024	133.31	2.9
October 2024	133.01	2.9
September 2024	132.34	3.0
August 2024	132.02	3.5
July 2024	131.78	4.0
June 2024	131.77	3.9
May 2024	131.73	3.6
April 2024	131.53	3.2
March 2024	131.03	3.3
February 2024	130.37	3.4
January 2024	129.71	2.8
December 2023	129.67	2.6
November 2023	129.50	2.6
October 2023	129.20	2.4



# Key Annual Inflation Drivers

## Annual Food Crops and Related Items

Year ended October 2024 at  
-5.3%

- Tomatoes -14.2%
- Fresh Leaf Vegetables (Bugga, Nakati) 6.3%
- Carrots -4.7%
- Bananas (Bogoya) 5.7%



Year ending November 2024  
at -4.0%

- Tomatoes -27.1%
- Fresh Leaf Vegetables (Bugga, Nakati) 0.6%
- Carrots 11.2%
- Bananas (Bogoya)

## Annual Services

Year ended October 2024  
at 6.2%

- Passenger Transport Services 3.8%
- Inpatient Care Services 17.9%



Year ending  
November 2024 at 5.9%

- Passenger Transport Services 2.4%
- Inpatient Care Services 6.6%

## Annual Energy, Fuel and Utilities

Year ended October 2024  
at 3.3%

- Petrol -5.9%
- Diesel -7.5%
- Kerosene -2.4%
- Firewood 13.3%
- Charcoal 17.0%



Year ending November 2024  
at 2.2%

- Petrol -9.4%
- Diesel -8.3%
- Kerosene -3.7%
- Firewood 16.8%
- Charcoal 13.9%



## 1.2 Annual Inflation by COICOP Divisions

According to the Classification of Individual Consumption According to Purpose (COICOP), 'Transport' inflation decreased to 3.7 percent in the year ending November 2024 from the 4.9 percent registered in the year ended October 2024. 'Health' inflation registered 5.9 percent for the year ending November 2024 compared to 7.8 percent registered for the year ended October 2024. 'Clothing and Footwear' inflation registered 4.1 percent in the year ending November 2024 compared to 5.3 percent recorded in the year ended October 2024. 'Recreation, Sport and Culture' inflation slowed down to 5.4 percent in the year ending November 2024 compared to 6.9 percent registered in the year ended October 2024. 'Personal Care, Social Protection and Miscellaneous Goods' inflation registered 3.9 percent for the year ending November 2024 compared to 4.5 percent registered for the year ended October 2024. 'Furnishings, Household Equipment and Routine Household' inflation registered 3.2 percent in the year ending November 2024 compared to 3.6 percent registered in the year ended October 2024. 'Alcoholic Beverages, Tobacco and Narcotics' inflation slowed down to 2.0 percent for the year ending November 2024 compared to 2.2 percent registered for the year ended October 2024. 'Housing, Water, Electricity, Gas and Other Fuels' inflation registered 4.1 percent in the year ending November 2024 compared to 4.2 percent registered in the year ended October 2024. 'Information and communication' inflation registered 1.8 percent in the year ending November 2024 from the 1.9 percent recorded in the year ended October 2024. 'Restaurants and Accommodation Services' inflation registered 3.8 percent in the year ending November 2024 same rate registered in the year ended October 2024. 'Education Services' inflation recorded 10.3 percent in the year ending November 2024 same rate registered in the year ended October 2024.

These were offset by, 'Food and Non-Alcoholic Beverages' inflation that increased to minus 1.1 percent in the year ending November 2024 compared to minus 2.1 percent registered in the year ended October 2024. Additionally, 'Insurance and Financial Services' inflation registered 8.3 percent in the year ending November 2024 compared to 2.6 percent recorded in the year ended October 2024, see Table 3 below.

**Table 3: Annual Changes in the Consumer Price Indices for the COICOP Divisions.**

<b>13 COICOP Divisions</b>	<b>Weight</b>	<b>Annual % Change October 2023 - October 2024</b>	<b>Annual % Change November 2023 - November 2024</b>
Food and Non-Alcoholic Beverages	270.54	-2.1	-1.1
Alcoholic Beverages, Tobacco and Narcotics	38.80	2.2	2.0
Clothing and Footwear	69.77	5.3	4.1
Housing, Water, Electricity, Gas and Other Fuels	104.16	4.2	4.1
Furnishings, Household Equipment and Routine Household	48.37	3.6	3.2
Health	47.47	7.8	5.9
Transport	104.55	4.9	3.7
Information and Communication	44.32	1.9	1.8
Recreation, Sport and Culture	49.85	6.9	5.4
Education Services	57.96	10.3	10.3
Restaurants and Accommodation Services	87.38	3.8	3.8
Insurance and Financial Services	22.80	2.6	8.3
Personal Care, Social Protection and Miscellaneous Goods	54.04	4.5	3.9
<b>Overall</b>	<b>1,000.0</b>	<b>2.9</b>	<b>2.9</b>

### 1.3 Monthly Inflation.

The Monthly Headline Inflation for November 2024 increased by 0.2 percent from the 0.5 percent rise registered for the month of October 2024, Table 4 below.

This was mainly due to Monthly Core Inflation that increased by 0.2 percent in November 2024 from the 0.5 percent rise registered in October 2024. The main driver for the rise in Core Inflation was monthly Services Inflation that registered an increase of 0.3 percent in November 2024 from the 0.8 percent rise recorded in October 2024. In addition, monthly Other Goods Inflation increased by 0.2 percent in November 2024 the same rate recorded in October 2024.

In addition, monthly Food Crops and Related Items Inflation increased by 1.0 percent in November 2024 from the 1.1 percent rise recorded in October 2024. This was mainly due to matooke prices that increased by 9.0 percent in November 2024 from the 8.2 percent rise recorded in October 2024. In addition, Tomato prices increased by 5.3 percent in November 2024 from the 2.2 percent drop recorded in October 2024. Passion fruit prices increased by 8.8 percent in November 2024 from the 4.5 percent rise recorded in October 2024. Pineapple prices increased by 20.7 percent in November 2024 from the 2.9 percent rise recorded in October 2024.

Monthly Energy Fuel and Utilities (EFU) Inflation recorded 0.8 percent decrease in November 2024 from the 0.0 percent registered in October 2024. This was mainly due to Firewood prices that decreased by 3.5 percent in November 2024 from the 2.9 percent rise recorded in October 2024. In addition, monthly Liquid Energy Fuels inflation decreased by 1.5 percent in November 2024 from the 1.9 percent drop recorded in October 2024. Specifically, Petrol prices decreased by 1.9 percent in November 2024 from the 2.0 percent drop recorded in October 2024. Diesel prices decreased by 1.7 percent in November 2024 from the 1.5 percent drop recorded in October 2024.

**Table 4: Monthly Headline, Core, Food Crops and EFU Inflation for October 2024 and November 2024.**

Description	Weights	October 2024	November 2024
<b>Headline</b>	<b>1000.00</b>	<b>0.5</b>	<b>0.2</b>
<b>Core</b>	<b>839.62</b>	<b>0.5</b>	<b>0.2</b>
Other Goods	455.51	0.2	0.2
Services	384.11	0.8	0.3
<b>Food Crops and Related Items</b>	<b>95.10</b>	<b>1.1</b>	<b>1.0</b>
<b>Energy Fuel and Utilities (EFU)</b>	<b>65.28</b>	<b>0.0</b>	<b>-0.8</b>

The overall monthly Consumer Price Indices and Inflation from October 2023 to November 2024 are shown in Table 5 below.

**Table 5: Overall Monthly CPI and Rates of Inflation (Base: 2016/17=100)**

Month	Overall CPI	Monthly Inflation
November 2024	133.31	0.2
October 2024	133.01	0.5
September 2024	132.34	0.2
August 2024	132.02	0.2
July 2024	131.78	0.0
June 2024	131.77	0.0
May 2024	131.73	0.2
April 2024	131.53	0.4
March 2024	131.03	0.5
February 2024	130.37	0.5
January 2024	129.71	0.0
December 2023	129.67	0.1
November 2023	129.50	0.2
October 2023	129.20	0.6

#### 1.4 Monthly Inflation by COICOP Divisions

According to the Classification of Individual Consumption According to Purpose (COICOP), monthly Food and Non-Alcoholic Beverages inflation increased by 0.7 percent in November 2024 from the 0.5 percent rise recorded in October 2024. Monthly Insurance and Financial Services Inflation increased by 5.6 percent in November 2024 from the 0.1 percent rise recorded in October 2024. Monthly Health Inflation increased by 0.3 percent in November 2024 from the 0.1 percent rise recorded in October 2024. Monthly Restaurants and Accommodation Services Inflation increased by 0.1 percent in November 2024 from the 0.7 percent rise recorded in October 2024. Monthly Alcoholic Beverages, Tobacco and Narcotics Inflation increased by 0.1 percent in November 2024 from the 0.2 percent rise recorded in October 2024. Monthly Information and Communication Inflation registered 0.0 percent in November 2024 from the 0.4 percent rise recorded in October 2024. Monthly Education Services Inflation registered 0.0 percent in November 2024 from the 0.6 percent rise recorded in October 2024. However, Monthly Transport Inflation decreased by 0.4 percent in November 2024 from the 1.6 percent rise recorded in October 2024. Monthly Housing, Water, Electricity, Gas and Other Fuels Inflation decreased by 0.2 percent in November 2024 from the 0.4 percent rise recorded in October 2024. Monthly Furnishings, Household Equipment and Routine Household Inflation decreased by 0.3 percent in November 2024 from the 0.5 percent rise recorded in October 2024. Monthly Personal Care, Social Protection and Miscellaneous Goods inflation decreased by 0.3 percent in November 2024 from the 0.2 percent rise recorded in October 2024.

**Table 6: Monthly Changes in the Consumer Price Indices for the COICOP Divisions.**

<b>13 COICOP Divisions</b>	<b>Weight</b>	<b>Monthly %Change September 2024-October 2024</b>	<b>Monthly % Change October 2024 - November 2024</b>
Food and Non-Alcoholic Beverages	270.54	0.5	0.7
Alcoholic Beverages, Tobacco and Narcotics	38.80	0.2	0.1
Clothing and Footwear	69.77	-0.1	-0.1
Housing, Water, Electricity, Gas and Other Fuels	104.16	0.4	-0.2
Furnishings, Household Equipment and Routine Household	48.37	0.5	-0.3
Health	47.47	0.1	0.3
Transport	104.55	1.6	-0.4
Information and Communication	44.32	0.4	0.0
Recreation, Sport and Culture	49.85	0.0	-0.1
Education Services	57.96	0.6	0.0
Restaurants and Accommodation Services	87.38	0.7	0.1
Insurance and Financial Services	22.80	0.1	5.6
Personal Care, Social Protection and Miscellaneous Goods	54.04	0.2	-0.3
<b>Overall</b>	<b>1,000.00</b>	<b>0.5</b>	<b>0.2</b>

# Key Monthly Inflation Drivers

## Monthly Other goods

October 2024 at 0.2%

- Maize flour -3.1%
- Sugar 5.9%
- Beef 0.9%
- Rice -1.4%



November 2024 at 0.2%

- Maize flour 5.3%
- Sugar 2.2%
- Beef 0.4%
- Rice 0.5%

## Monthly Food Crops and Related Items

October 2024 at 1.1%

- Matooke 8.2%
- Tomatoes -2.2%
- Passion fruits 4.5%
- Pineapples 2.9%



November 2024 at 1.0%

- Matooke 9.0%
- Tomatoes 5.3%
- Passion fruits 8.8%
- Pineapples 20.7%

## Monthly Energy, Fuel and Utilities

October 2024 at 0.0%

- Firewood 2.9%
- Petrol -2.0%
- Diesel -1.5%
- Kerosene -1.0%



November 2024 at -0.8%

- Firewood -3.5%
- Petrol -1.9%
- Diesel -1.7%
- Kerosene -0.9%

Relative to November 2023 and October 2024, the national average retail prices of selected commodities in November 2024 are shown in Table 7 below.

**Table 7: National Average Retail Prices of Selected Commodities**

Commodity Name	Quantity	Unit of Measure	Average Price November 2023	Average Price October 2024	Average Price November 2024
Matooke-bunch	1	Kg	1,180	1,084	1,122
Tomatoes	1	Kg	2,929	2,143	2,232
Passion fruits	1	Kg	6,801	6,976	7,332
Pineapple	1	Kg	1,715	1,516	1,684
Maize flour	1	Kg	3,001	2,276	2,423
Sugar	1	Kg	5,882	4,245	4,322
Beef	1	Kg	14,244	15,381	15,374
Petrol	1	Litre	5,564	5,205	5,105
Diesel	1	Litre	5,075	4,765	4,691

### 1.5 Annual Headline Inflation by CPI Geographical Center

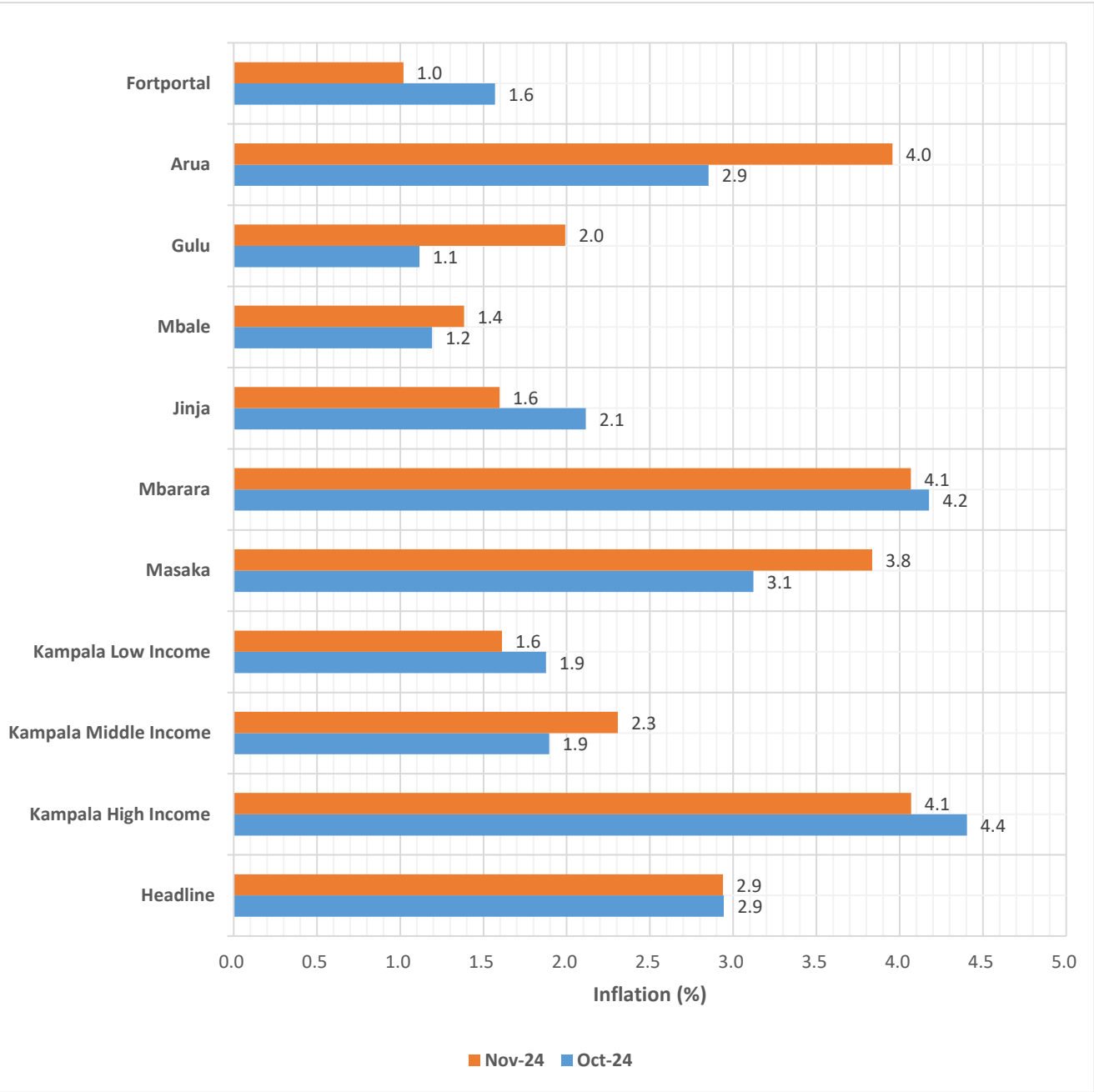
Analysis by geographical areas and income groups revealed that Kampala High Income Group registered the highest inflation at 4.1 percent for the year ending November 2024 compared to 4.4 percent recorded in October 2024. This was mainly driven by annual 'Food and Non-Alcoholic Beverages' inflation that increased to 1.2 percent in November 2024 compared to minus 0.2 percent registered in October 2024. In addition, Annual 'Insurance and Financial Services' inflation increased to 10.2 percent in November 2024 compared to 3.9 percent registered in October 2024.

The second highest Annual Inflation was registered in Mbarara Centre at 4.1 percent for the year ending November 2024 compared to 4.2 percent recorded in October 2024. This was mainly driven by annual 'Food and Non-Alcoholic Beverages' inflation that increased to 2.3 percent in November 2024 compared to 1.2 percent registered in October 2024. In addition, Annual 'Insurance and Financial Services' inflation increased to 7.0 percent in November 2024 compared to 1.7 percent registered in October 2024.

The least Annual Inflation was registered in Fortportal Centre at 1.0 percent for the year ending November 2024 compared to 1.6 percent recorded in October 2024. This was mainly due to the annual 'Food and Non-Alcoholic Beverages' inflation that registered minus 5.8 percent in November 2024 compared to minus 3.6 percent registered in October 2024. In addition, Annual 'Transport' inflation registered minus 2.4 percent in November 2024 compared to minus 0.4 percent registered in October 2024.



Figure 2: Annual Inflation by CPI Geographical Center for the 12 months to October 2024 and November 2024



## ANNEX 1: ANNUAL INFLATION BY COICOP DIVISIONS

The evolution of Annual Inflation according to COICOP is described in the following paragraphs, reference is made to table 6.

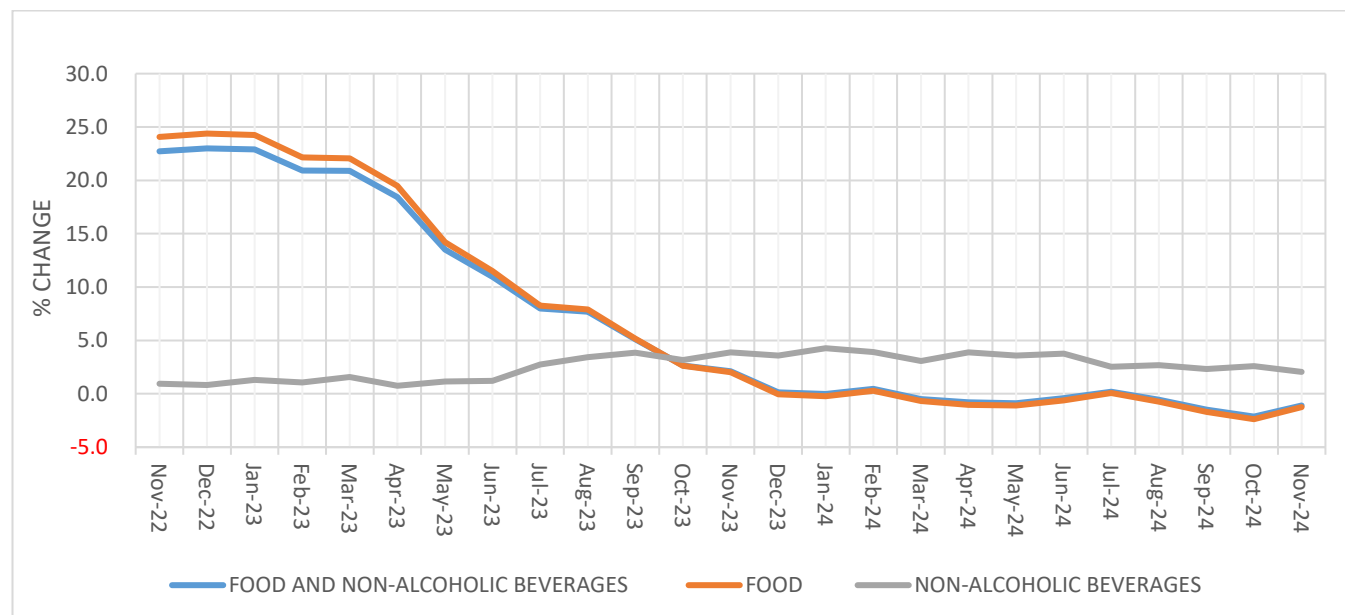
### 01 Food and Non-Alcoholic Beverages

The Inflation for Food and Non-Alcoholic Beverages decreased to minus 1.1 percent for the 12 months to November 2024 compared to minus 2.1 percent registered in October 2024. This was mainly due to Annual Food Inflation that decreased to minus 1.2 percent in November 2024 compared to minus 2.4 percent recorded in October 2024.

Non-Alcoholic Beverages Inflation for the 12 months to November 2024 slowed down to 2.1 percent compared to 2.6 percent recorded in October 2024.

*Figure 4 shows the trends of Food and Non-Alcoholic Beverages Annual Inflation from November 2022 to November 2024.*

**Figure 4: Food and Non Alcoholic Beverages Annual Inflation Trends; November 2022 – November 2024.**



### 02 Alcoholic Beverages, Tobacco & Narcotics

Alcoholic Beverages, Tobacco & Narcotics Inflation registered 2.0 percent for the 12 months to November 2024 compared to 2.2 percent recorded in October 2024. This was attributed to the Annual Alcoholic Beverages Inflation that slowed down to 1.2 percent for the 12 months to November 2024 compared to 1.3 percent recorded in October 2024.

In addition, Annual Tobacco Inflation slowed down to 8.9 percent in November 2024 compared to the 10.7 percent registered in October 2024.

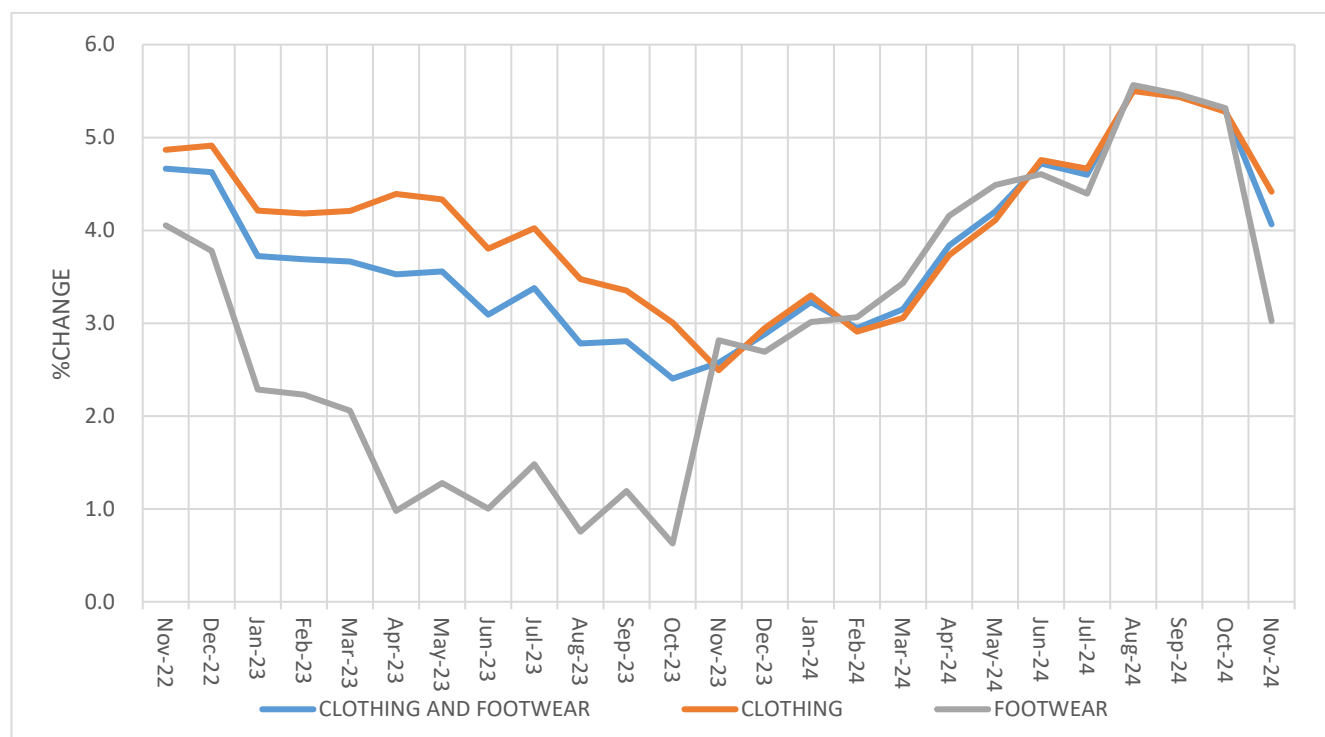
### 03 Clothing and Footwear

The Annual Clothing and Footwear Inflation registered 4.1 percent for the 12 months to November 2024 compared to 5.3 percent recorded in October 2024. This was mainly attributed to Clothing Inflation that slowed down to 4.4 percent for the 12 months to November 2024 compared to 5.3 percent recorded in October 2024.

In addition, Footwear Inflation slowed down to 3.0 percent in November 2024 compared to 5.3 percent recorded in October 2024.

*Figure 5 shows the trends of Clothing and Footwear Inflation from November 2022 to November 2024.*

**Figure 5: Clothing and Footwear Annual Inflation Trends; November 2022 – November 2024.**



### 04 Housing, Water, Electricity, Gas and other Fuels

Housing, Water, Electricity, Gas and Other Fuels comprises of Actual Rentals for Housing, Maintenance, Repair and Security of the Dwelling, Water Supply and Miscellaneous Services Relating to the Dwelling, Electricity, Gas and Other Fuels.

Housing, Water, Electricity, Gas & Other Fuels Inflation registered 4.1 percent for the 12 months to November 2024 compared to 4.2 percent recorded in October 2024. This was mainly attributed to Annual Electricity, Gas and Other Fuels Inflation that slowed down to 7.2 percent for the 12 months to November 2024 compared to 7.9 percent recorded in October 2024. In addition, Annual Water Supply and Miscellaneous Services Relating to the Dwelling inflation registered 4.0 percent for the 12 months to November 2024 compared to 3.8 recorded in October 2024. Annual Maintenance, Repair and Security of the Dwelling Inflation registered 1.7 percent for the 12 months to November 2024 compared to minus 0.4 percent recorded in October 2024.

Annual Actual Rentals for Housing Inflation registered 1.5 percent in November 2024 compared the same rate recorded in October 2024.

## **05 Furnishings, Household Equipment and Routine Household Maintenance**

This Division Comprises of Furniture, Furnishings, and Loose Carpets, Household Textiles, Household Appliances, Glassware, Tableware and Household Utensils, Tools and Equipment for House & Garden, and Goods & Services for Routine Household Maintenance.

The Inflation for Furnishings, Household Equipment & Routine Household Maintenance slowed down to 3.2 percent for the 12 months to November 2024 compared to 3.6 percent recorded in October 2024. This was mainly due to Annual Household textiles inflation that slowed down to 6.1 percent for the 12 months to November 2024 compared to the 7.5 percent recorded in October 2024. In addition, Annual Goods & Services for Routine Household Maintenance Inflation slowed down to 2.5 percent for the 12 months to November 2024 compared to the 2.7 percent registered in October 2024. Annual Glassware, Tableware and Household Utensils Inflation registered 5.3 percent for the 12 months to November 2024 compared to 5.8 percent recorded in October 2024. Annual Furniture, Furnishings, and Loose Carpets Inflation registered 3.4 percent for the 12 months to November 2024 compared to 3.5 percent recorded in October 2024. Annual Household Appliances Inflation registered 3.2 percent for the 12 months to November 2024 the same rate recorded in October 2024.

However, Annual Tools and Equipment for House & Garden Inflation registered minus 0.9 percent for the 12 months to November 2024 compared to 0.6 percent recorded in October 2024

## **06 Health**

The Health Division comprises of Medicines and Health Products, Outpatient Care Services, Inpatient Care Services and Other Health Services.

The Inflation for Health slowed down to 5.9 percent for the 12 months to November 2024 compared to 7.8 percent registered in October 2024. This was mainly due to Annual Inpatient Care Services Inflation that slowed down to 6.6 percent for the 12 months to November 2024 compared to 17.9 percent recorded in October 2024.

Annual Medicine and Health Products Inflation increased to 4.2 percent for the 12 months to November 2024 compared to 3.4 percent recorded in October 2024. Annual Outpatient Care Services Inflation increased to 8.0 percent for the 12 months to November 2024 from the 7.9 percent recorded in October 2024. Annual Other Health Services Inflation increased to 8.3 percent for the 12 months to November 2024 compared to 8.1 percent recorded in October 2024.

## **07 Transport**

Transport division comprises of Purchase of vehicles, Operation of Personal Transport Equipment and Passenger Transport Services.

The Inflation for Transport slowed down to 3.7 percent for the 12 months to November 2024 compared to 4.9 percent recorded in October 2024. This was mainly attributed to Annual Passenger Transport Services Inflation that slowed down to 2.4 percent in November 2024 compared to 3.8 percent recorded in October 2024. In addition, Annual Operation of Personal Transport Equipment inflation registered 5.7 percent for the 12 months to November 2024 compared to 6.9 percent registered in October 2024.

Annual Purchase of vehicles Inflation registered 1.7 percent in November 2024 compared to 2.2 percent recorded in October 2024.

## **08 Information and Communication**

Information and Communication includes Information and Communication Equipment, and Information and Communication Services.

The Annual Inflation for Information and Communication slowed down to 1.8 percent for the 12 months to November 2024 compared to 1.9 percent recorded in October 2024. This was mainly due to Annual Information and Communication Services Inflation that slowed down to 1.7 percent for the 12 months to November 2024 compared to 1.8 percent recorded in October 2024.

Annual Information and Communication Equipment Inflation registered 2.0 percent in November 2024 the same rate recorded in October 2024.

## **09 Recreation, Sport and Culture**

Recreation, Sport and Culture comprises of Other Recreational Goods, Gardens and Pets, Recreational Services, Cultural Services, Newspapers, Books & Stationery and Package Holidays.

The Annual Inflation for Recreation, Sport and Culture slowed down to 5.4 percent for the 12 months to November 2024 compared to 6.9 percent recorded in October 2024. This was mainly due to Annual Cultural Services Inflation that slowed down to 6.3 percent for the 12 months to November 2024 compared to 8.5 percent recorded in October 2024. In addition, Annual Newspapers, Books & Stationery Inflation slowed down to 4.0 percent in November 2024 compared to 4.6 percent recorded in October 2024. Annual Gardens and Pets inflation registered 12.7 percent for the 12 months to November 2024 compared to 15.8 percent recorded in October 2024. Annual Recreational Services Inflation registered 5.9 percent for the 12 months to November 2024 compared to 6.2 percent recorded in October 2024. Annual Package Holidays inflation registered 1.1 percent for the 12 months to November 2024 compared to 1.9 percent recorded in October 2024.

Annual Other Recreational Goods Inflation increased to 2.6 percent for the 12 months to November 2024 compared to 1.4 percent recorded in October 2024.

## **10 Education Services**

Education Services comprises of Early Childhood and Primary Education, Secondary Education, Post-secondary non-tertiary education, Tertiary Education and Education Not Defined by level.

The Annual Inflation for Education Services registered 10.3 percent for the 12 months to November 2024 the same rate recorded in October 2024. This was mainly due to Annual Early Childhood and Primary Education inflation that registered 14.7 percent for the 12 months to November 2024 the same rate recorded in October 2024. In addition, Annual Secondary Education Inflation registered 9.2 percent for the 12 months to November 2024 the same rate recorded in October 2024. Annual Post-Secondary Non-Tertiary Education inflation registered 8.3 percent for the 12 months to November 2024 the same rate recorded in October 2024. Annual Education Not Defined by level registered 0.1 percent for the 12 months to October same as that recorded in October 2024.

## **11 Restaurants and Accommodation Services**

Restaurants and Accommodation Services comprises of Food and Beverage Serving Services and Accommodation Services.

Annual Inflation for Restaurants and Accommodation Services registered 3.8 percent for the 12 months to November 2024 the same rate recorded in October 2024. This was due to Annual Food and Beverage Serving Services Inflation that registered 3.0 percent for the 12 months to November 2024 the same rate recorded in October 2024

Annual Accommodation Services Inflation increased to 5.8 percent in November 2024 compared to 5.7 percent recorded in October 2024.

## **12 Insurance and Financial Services**

Insurance and Financial Services comprises of Insurance and Financial Services.

The Annual Insurance and Financial Services Inflation for the 12 months to November 2024 increased to 8.3 percent compared to 2.6 percent recorded in October 2024. This was mainly due to Annual Financial Services Inflation that increased to 9.0 percent in November 2024 compared to 2.7 percent recorded in October 2024.

In addition, Annual Insurance Services Inflation increased to 1.6 percent for the 12 months to November 2024 compared to 1.4 percent recorded in October 2024.

## **13 Personal Care, Social Protection and Miscellaneous Goods**

Personal Care, Social Protection and Miscellaneous Goods comprises of Personal Care, Personal Effects n.e.c, Social Protection and Other services n.e.c.

The Annual Personal Care, Social Protection and Miscellaneous Goods Inflation for the 12 months to November 2024 slowed down to 3.9 percent compared to 4.5 percent recorded in October 2024. This was mainly due to Annual Personal Care Inflation that slowed down to 2.5 percent for the 12 months to November 2024 compared to 3.4 percent recorded in October 2024. In addition, Annual Personal Effects NEC Inflation slowed down to 6.5 percent for the 12 months to November 2024 compared to 6.7 percent recorded for October 2024.

Annual Other Services n.e.c Inflation registered 7.2 percent for the 12 months to November 2024 the same rate recorded in October 2024. Annual Social Protection Inflation registered 5.2 percent for the 12 months to November 2024 the same rate recorded in October 2024.



## ANNEX 2: MONTHLY INFLATION BY COICOP DIVISIONS

The evolution of Monthly Inflation according to COICOP is described in the following paragraphs, reference is made to table 4.

### 01 Food and Non-Alcoholic Beverages

The Monthly Inflation for Food and Non-alcoholic Beverages increased by 0.7 percent for the month of November 2024 from the 0.5 percent rise recorded in October 2024. This was mainly due to the monthly Food Inflation that increased by 0.8 percent for the month of November 2024 from the 0.5 percent rise recorded in October 2024.

Non-Alcoholic Beverages Inflation registered 0.0 percent for the month of November 2024 from the 0.1 percent rise recorded in October 2024.

### 02 Alcoholic Beverages, Tobacco & Narcotics

The Monthly Inflation for Alcoholic Beverages, Tobacco & Narcotics increased by 0.1 percent for the month of November 2024 from the 0.2 percent rise recorded in October 2024. This was mainly due to Alcoholic beverages Inflation that increased by 0.2 percent for the month of November 2024 from the 0.1 percent rise recorded in October 2024.

However, Tobacco Inflation registered a 1.2 percent drop for the month of November 2024 from the 0.6 percent rise recorded in October 2024.

### 03 Clothing and Footwear

The Monthly Inflation for Clothing and Footwear decreased by 0.1 percent for the month of November 2024 from the 0.1 percent drop recorded in October 2024. This was mainly due to Clothing Inflation that decrease by 0.1 percent for the month of November 2024 from the 0.2 percent drop recorded in June 2024. In addition, Footwear Inflation registered a drop of 0.1 percent for the month of November 2024 from 0.0 percent recorded in October 2024.

### 04 Housing, Water, Electricity, Gas and other Fuels

The Monthly Inflation for Housing, Water, Electricity, Gas & Other fuels registered a 0.2 percent drop for the month of November 2024 from the 0.4 percent rise recorded in October 2024. This was mainly attributed to Electricity, Gas and Other Fuels Inflation that registered 0.6 percent drop for the month of November 2024 from the 0.1 percent rise recorded in October 2024. In addition, Water Supply and Miscellaneous Services Inflation registered 0.0 percent for the month of November 2024 from the 1.5 percent rise recorded in October 2024. Actual Rentals for Housing Inflation registered 0.0 percent for the month of November 2024 from 0.1 percent rise recorded in October 2024.

Maintenance, Repair And Security Of The Dwelling Inflation registered 0.0 percent for the month of November 2024 from the 0.2 percent rise recorded in October 2024.

## **05 Furnishings, Household Equipment and Routine Household Maintenance**

The Monthly Inflation for Furnishings, Household Equipment & Routine Household Maintenance recorded a drop of 0.3 percent for the month of November 2024 from the 0.5 percent rise registered for the month of October 2024.

This was mainly due to Goods and Services for routine household maintenance inflation that recorded 0.4 percent drop in November 2024 from the 0.8 percent rise recorded for the month of October 2024. In addition, Tools and Equipment for House and Garden Inflation recorded 0.4 percent drop for the month of November 2024 from the 0.5 percent rise registered in October 2024. In addition, Household Appliances Inflation recorded a drop of 0.3 percent for the month of November 2024 from the 0.3 percent rise recorded during October 2024. Household Textiles inflation decreased by 0.1 percent for the Month of November 2024 from the 0.1 percent drop recorded for October 2024.

However, Glassware, Tableware and Household Utensils Inflation that increased by 0.1 percent for the month of November 2024 from the 0.2 percent rise registered in October 2024. Furniture, Furnishings, and Loose Carpets inflation recorded a rise of 0.1 percent for the month of November 2024 from the 0.1 percent drop recorded in October 2024.

## **06 Health**

The Monthly Inflation for Health recorded an increase by 0.3 percent for the month of November 2024 from the 0.1 percent rise recorded in October 2024. This was mainly due to Medicines And Health Products Inflation that recorded a rise of 0.5 percent for the month of November 2024 from the 0.2 percent increase registered in October 2024.

In addition, Other Health Services Inflation registered a rise of 0.2 percent for the month of November 2024 from the 0.1 percent drop registered in October 2024. Outpatient Care Services Inflation recorded an increase of 0.1 percent for the month of November 2024 from the 0.5 percent rise registered in October 2024. Inpatient care services inflation recorded 0.2 percent rise for the month of November 2024 from the 0.0 percent recorded for the month of October 2024.

## **07 Transport**

Transport Inflation registered a drop of 0.4 percent for the month of November 2024 from the 1.6 percent rise recorded for the month of October 2024. This was mainly due to Operation of personal transport equipment inflation that registered 0.4 percent drop for the month of November 2024 from the 5.7 percent rise recorded in October 2024.

In addition, Passenger Transport Services inflation decreased by 0.4 percent for the month of November 2024 from the 1.8 percent drop recorded in October 2024. Purchase of vehicles Inflation registered 0.6 percent drop for the month of November 2024 from the 0.0 percent recorded in October 2024.

## **08 Information and Communication**

The monthly inflation for Information and Communication registered 0.0 percent for the month of October 2024 from the 0.4 percent rise recorded in October 2024. This was mainly due to Information and communication services inflation that registered 0.0 percent during the month of November 2024 from the 0.4 percent rise recorded in October 2024.

Information and Communication Equipment inflation increased by 0.1 percent during the month of October 2024 from the 0.3 percent rise recorded in October 2024.

## **09 Recreation, Sport and Culture**

Monthly Recreation, Sport and Culture inflation registered 0.1 percent drop in the month of November 2024 from 0.0 percent recorded in October 2024.

This was due mainly due to Cultural Services Inflation registered 0.2 percent drop for the month of November 2024 from 0.0 percent recorded in October 2024. In addition, Newspapers, books & stationery inflation decreased by 0.1 percent for the month of November 2024 from the 0.1 percent drop recorded in October 2024.

Gardens and Pets Inflation registered 0.0 percent for the month of November 2024 same rate recorded during the month of October 2024. Recreational services Inflation registered 0.0 percent for the month of November 2024 same rate recorded during the month of October 2024. Package Holidays Inflation registered 0.0 percent for the month of November 2024 same rate recorded in October 2024. Other recreational goods inflation recorded 0.0 percent for the month of November 2024 same rate recorded in October 2024.

## **10 Education Services**

Monthly Inflation for Education Services registered 0.0 percent for the month of November 2024 from the 0.6 percent rise recorded in October 2024. This was due due to Early Childhood and Primary Education Inflation that registered 0.0 percent for the month of November 2024 compared to 0.1 percent rise recorded in October 2024. In addition, Secondary Education Inflation registered 0.0 percent for the month of November 2024 from the 0.3 percent rise recorded in October 2024. Post-secondary and non-tertiary education Inflation recorded 0.0 percent for the month of November 2024 the same rate recorded for the month of October 2024.

Tertiary education Inflation registered 0.0 percent for the the month of November 2024 the same rate recorded for the month of October 2024 and Education not Defined by level inflation recorded 0.0 percent for the month of November 2024 the same rate recorded in October 2024.

## **11 Restaurants and Accommodation Services**

The Monthly Inflation for restaurants and accommodation services increased by 0.1 percent for the month of November 2024 from the 0.7 percent rise recorded for the month of October 2024. This was due to Accommodation services inflation that registered an increase of 0.1 percent for the month of November 2024 from the 1.4 percent rise recorded for the month of October 2024.

In addition, Food and beverage serving services inflation registered an increase of 0.1 percent for the month of November 2024 from the 0.3 percent rise registered in October 2024.

## **12 Insurance and Financial Services**

Insurance and Financial Services Inflation registered a rise of 5.6 percent for the month of November 2024 from the 0.1 percent recorded for the month of October 2024. This was mainly due to Financial Services Inflation that registered 6.1 percent rise for the month of November 2024 from 0.0 percent recorded for the month of October 2024.

Insurance Inflation registered 0.0 percent for the month of November 2024 from the 1.1 percent rise recorded during the month of October 2024.

## **13 Personal Care, Social Protection and Miscellaneous Goods**

Personal Care, Social Protection and Miscellaneous Goods Inflation registered 0.3 percent drop for the month of November 2024 from the 0.2 percent rise recorded for the month of October 2024. This was due to Personal care Inflation that recorded a drop of 0.4 percent for the month of November 2024 from the 0.1 percent rise recorded for the month of October 2024. In addition, Personal Effects n.e.c Inflation registered 0.3 percent drop for the month of November 2024 from the 0.1 percent rise recorded for the month of October 2024.

Other services n.e.c inflation registered 0.0 percent for the month of November 2024 the same rate registered for October 2024.

Social protection inflation recorded 0.0 percent in November 2024 same as that recorded for the month of October 2024.

**TABLE 8: UGANDA CONSUMER PRICE INDEX (CPI) AND INFLATION FOR CORE, FOOD CROPS, & EFU: (2016/17) = 100**

GROU P		Core	Food Crops	EFU	Headline	Core	Food Crops	EF U	Head- line	Core	Food Crop s	EF U	Head- line
Weights		839.62	95.10	65.28	1000.00	Monthly % Change				Annual % Change			
Financial Years													
	2020/21	112.89	97.80	117.74	111.77					3.5	-4.3	-0.9	2.5
	2021/22	116.49	102.11	123.88	115.61					3.2	4.4	5.2	3.4
	2022/23	125.15	125.30	134.93	125.80					7.4	22.7	8.9	8.8
	2023/24	128.91	129.49	141.30	129.77					3.0	3.3	4.7	3.2
Calendar Years													
	2020	111.16	99.72	118.96	110.58					3.2	-0.5	1.3	2.8
	2021	114.23	98.82	118.10	113.02					2.8	-0.9	-0.7	2.2
	2022	121.07	113.58	133.16	121.15					6.0	14.9	12.8	7.2
	2023	126.79	129.56	135.72	127.63					4.7	14.1	1.9	5.4
2021	Aug	114.47	97.25	117.98	113.06	-0.2	1.1	0.3	0.0	2.2	0.5	-0.5	1.9
	Sep	114.85	100.30	118.99	113.74	0.3	3.1	0.9	0.6	2.2	3.2	0.2	2.2
	Oct	114.98	100.60	119.84	113.93	0.1	0.3	0.7	0.2	2.1	1.7	-0.2	1.9
	Nov	115.35	98.73	120.96	114.13	0.3	-1.9	0.9	0.2	2.6	3.6	2.0	2.6
	Dec	116.06	97.84	121.05	114.65	0.6	-0.9	0.1	0.5	2.9	2.8	3.2	2.9
2022	Jan	115.30	98.88	123.92	114.30	-0.7	1.1	2.4	-0.3	2.3	3.7	6.5	2.7
	Feb	116.52	98.68	125.61	115.42	1.1	-0.2	1.4	1.0	3.1	0.7	7.0	3.2
	Mar	117.19	102.33	126.43	116.38	0.6	3.7	0.7	0.8	3.6	1.9	8.5	3.7
	Apr	118.26	107.82	129.17	117.98	0.9	5.4	2.2	1.4	4.3	5.4	11.2	4.9
	May	119.55	114.10	130.21	119.73	1.1	5.8	0.8	1.5	5.1	13.6	12.0	6.3
	June	120.75	112.56	134.74	120.88	1.0	-1.4	3.5	1.0	5.5	14.5	14.2	6.8
	July	121.94	112.01	137.94	122.04	1.0	-0.5	2.4	1.0	6.3	16.4	17.2	7.9
	Aug	122.74	115.50	141.08	123.24	0.7	3.1	2.3	1.0	7.2	18.8	19.6	9.0
	Sep	124.21	121.95	141.22	125.10	1.2	5.6	0.1	1.5	8.1	21.6	18.7	10.0
	Oct	125.19	126.31	138.01	126.13	0.8	3.6	-2.3	0.8	8.9	25.6	15.2	10.7
	Nov	125.48	126.20	135.74	126.21	0.2	-0.1	-1.6	0.1	8.8	27.8	12.2	10.6
	Dec	125.77	126.62	133.92	126.38	0.2	0.3	-1.3	0.1	8.4	29.4	10.6	10.2
2023	Jan	125.64	126.15	133.32	126.19	-0.1	-0.4	-0.5	-0.2	9.0	27.6	7.6	10.4
	Feb	125.64	125.66	132.11	126.04	0.0	-0.4	-0.9	-0.1	7.8	27.4	5.2	9.2
	Mar	126.15	129.71	132.00	126.87	0.4	3.2	-0.1	0.7	7.6	26.7	4.4	9.0
	Apr	126.27	135.07	131.89	127.47	0.1	4.1	-0.1	0.5	6.8	25.3	2.1	8.0
	May	126.24	132.02	131.39	127.13	0.0	-2.3	-0.4	-0.3	5.6	15.7	0.9	6.2
	June	126.54	126.42	130.57	126.79	0.2	-4.2	-0.6	-0.3	4.8	12.3	-3.1	4.9
	July	126.55	122.44	135.72	126.76	0.0	-3.1	3.9	0.0	3.8	9.3	-1.6	3.9
	Aug	126.84	126.80	137.21	127.51	0.2	3.6	1.1	0.6	3.3	9.8	-2.7	3.5
	Sep	127.24	131.60	139.48	128.46	0.3	3.8	1.7	0.7	2.4	7.9	-1.2	2.7
	Oct	127.66	134.71	141.01	129.20	0.3	2.4	1.1	0.6	2.0	6.6	2.2	2.4
	Nov	128.02	134.32	141.51	129.50	0.3	-0.3	0.4	0.2	2.0	6.4	4.3	2.6
	Dec	128.66	129.80	142.48	129.67	0.5	-3.4	0.7	0.1	2.3	2.5	6.4	2.6
2024	Jan	128.69	129.48	143.17	129.71	0.0	-0.2	0.5	0.0	2.4	2.6	7.4	2.8
	Feb	129.87	126.35	142.67	130.37	0.9	-2.4	-0.4	0.5	3.4	0.5	8.0	3.4
	Mar	130.38	129.24	142.05	131.03	0.4	2.3	-0.4	0.5	3.4	-0.4	7.6	3.3
	Apr	130.65	131.87	142.35	131.53	0.2	2.0	0.2	0.4	3.5	-2.4	7.9	3.2
	May	130.95	130.23	143.90	131.73	0.2	-1.2	1.1	0.2	3.7	-1.4	9.5	3.6
	June	131.36	126.99	144.05	131.77	0.3	-2.5	0.1	0.0	3.8	0.5	10.3	3.9
	July	131.59	124.92	144.13	131.78	0.2	-1.6	0.1	0.0	4.0	2.0	6.2	4.0
	Aug	131.79	126.08	143.64	132.02	0.1	0.9	-0.3	0.2	3.9	-0.6	4.7	3.5
	Sep	131.99	126.25	145.69	132.34	0.2	0.1	1.4	0.2	3.7	-4.1	4.5	3.0
	Oct	132.63	127.61	145.71	133.01	0.5	1.1	0.0	0.5	3.9	-5.3	3.3	2.9
	Nov	132.93	128.93	144.60	133.31	0.2	1.0	-0.8	0.2	3.8	-4.0	2.2	2.9

EFU = Energy Fuel and Utilities

**TABLE 9: ENERGY FUEL AND UTILITIES (EFU) INDEX, ANNUAL AND MONTHLY % CHANGES, (2016/17) = 100.**

*Note: Liquid Energy Fuels (LEF) is a component of Petrol, Diesel, Kerosene, and Liquefied gas.*

	Weights	Jun-24	July-24	Aug-24	Sep-24	Oct-24	Nov-24
<b>Energy Fuel and Utilities (EFU)</b>	<b>65.28</b>	<b>144.05</b>	<b>144.13</b>	<b>143.64</b>	<b>142.69</b>	<b>145.71</b>	<b>144.60</b>
Diesel	2.89	165.21	163.00	160.76	160.57	158.21	155.45
Petrol	11.54	160.01	158.98	155.85	154.75	151.67	148.73
Electricity	12.26	103.66	102.13	102.13	102.13	101.51	101.51
Liquefied gas: propane	4.12	93.77	93.72	93.72	93.53	90.95	90.91
Kerosene/Paraffin	2.57	170.77	169.85	170.03	169.26	167.64	166.13
Firewood	5.27	170.57	176.09	176.47	177.97	183.07	176.64
Charcoal	10.03	189.18	190.72	191.54	202.40	202.48	203.22
Other solid fuels (ND)	0.28	183.56	183.56	183.56	183.56	183.56	183.56
Water charges - NWSC	12.80	135.04	135.04	135.04	137.63	137.63	137.63
Water Charges - Other Sources	3.52	115.63	115.63	115.63	115.63	126.43	126.43
<b>Liquid Energy Fuels (LEF)</b>	<b>21.13</b>	<b>149.11</b>	<b>148.13</b>	<b>146.13</b>	<b>145.37</b>	<b>142.67</b>	<b>140.49</b>
Monthly % Changes		-0.5	-0.7	-1.3	-0.5	-1.9	-1.5
Annual % Changes		5.3	5.1	3.8	-2.0	-5.4	-7.8
<b>Energy Fuel and Utilities (EFU) -Annual % Change</b>		<b>10.3</b>	<b>6.2</b>	<b>4.7</b>	<b>4.5</b>	<b>3.3</b>	<b>2.2</b>
Diesel		2.0	1.5	0.8	-2.6	-7.5	-8.3
Petrol		9.0	8.8	6.7	-2.2	-5.9	-9.4
Electricity		1.4	-0.1	-0.1	-0.1	-0.7	-0.7
Liquefied gas: propane		-1.5	-1.3	-1.3	-1.5	-4.2	-4.2
Kerosene/Paraffin		0.8	0.5	0.4	-0.5	-2.4	-3.7
Firewood		23.7	15.9	15.6	16.6	13.3	16.8
Charcoal		20.6	12.5	6.9	13.7	17.0	13.9
Other solid fuels (ND)		-1.7	-1.7	0.0	0.0	0.0	0.0
Water charges - NWSC		13.0	3.0	3.0	4.9	1.9	1.9
Water Charges - Other Sources		2.0	2.0	2.0	2.0	11.5	11.5
<b>EFU components Monthly % Change</b>		<b>0.1</b>	<b>0.1</b>	<b>-0.3</b>	<b>1.4</b>	<b>0.0</b>	<b>-0.8</b>
Diesel		-1.2	-1.3	-1.4	-0.1	-1.5	-1.7
Petrol		-0.2	-0.6	-2.0	-0.7	-2.0	-1.9
Electricity		0.0	-1.5	0.0	0.0	-0.6	0.0
Liquefied gas: propane		-1.6	-0.1	-0.0	-0.2	-2.8	-0.0
Kerosene/Paraffin		0.1	-0.5	0.1	-0.5	-1.0	-0.9
Firewood		2.4	3.2	0.2	0.8	2.9	-3.5
Charcoal		0.2	0.8	0.4	5.7	0.0	0.4
Other solid fuels (ND)		0.0	0.0	0.0	0.0	0.0	0.0
Water charges - NWSC		0.0	0.0	0.0	1.9	0.0	0.0
Water Charges - Other Sources		0.0	0.0	0.0	0.0	9.3	0.0



**TABLE 10: UGANDA ANNUAL INFLATION BY COICOP DIVISIONS (NOVEMBER 2023 – NOVEMBER 2024).**

Div.	PARTICULARS	CY 2022	CY 2023	FY 2022/23	FY 2023/24	Nov-23	Dec-23	Jan-24	Feb-24	Mar-24	Apr-24	May-24	Jun-24	Jul-24	Aug-24	Sep-24	Oct-24	Nov-24
	<b>Headline</b>	<b>7.2</b>	<b>5.4</b>	<b>8.8</b>	<b>3.2</b>	<b>2.6</b>	<b>2.6</b>	<b>2.8</b>	<b>3.4</b>	<b>3.3</b>	<b>3.2</b>	<b>3.6</b>	<b>3.9</b>	<b>4.0</b>	<b>3.5</b>	<b>3.0</b>	<b>2.9</b>	<b>2.9</b>
01	Food and Non-Alcoholic Beverages	13.6	10.6	18.6	1.9	2.1	0.1	-0.0	0.5	-0.5	-0.8	-0.9	-0.4	0.2	-0.6	-1.5	-2.1	-1.1
02	Alcoholic Beverages, Tobacco and Narcotics	5.0	5.8	7.7	3.7	4.1	3.6	3.4	2.1	3.5	3.7	4.2	3.8	3.7	4.1	2.9	2.2	2.0
03	Clothing and Footwear	3.3	3.2	3.7	3.2	2.6	2.9	3.2	2.9	3.1	3.8	4.2	4.7	4.6	5.5	5.4	5.3	4.1
04	Housing, Water, Electricity, Gas and Other Fuels	4.2	3.5	4.3	4.3	3.6	4.6	4.3	4.4	4.5	4.8	5.8	6.2	3.8	3.0	4.1	4.2	4.1
05	Furnishings, Household Equipment and Routine Household	14.5	3.8	10.4	2.6	1.7	1.9	2.7	3.1	2.8	2.9	3.3	4.5	4.1	3.5	2.7	3.6	3.2
06	Health	2.7	2.5	2.4	4.8	4.4	4.5	5.2	5.6	6.7	7.2	7.5	7.9	7.2	7.3	7.9	7.8	5.9
07	Transport	3.9	-0.5	4.3	-0.0	-1.6	2.4	2.5	1.8	3.1	2.9	5.0	5.4	6.3	5.4	2.9	4.9	3.7
08	Information and Communication	-1.6	1.9	0.1	2.1	2.1	2.1	1.8	1.7	1.8	1.5	1.5	1.3	1.3	1.3	1.5	1.9	1.8
09	Recreation, Sport and Culture	4.1	1.4	4.4	2.2	1.4	0.3	1.7	2.6	5.0	5.4	5.9	5.8	7.2	7.6	7.0	6.9	5.4
10	Education Services	9.5	6.9	9.5	8.6	6.1	6.1	6.1	14.5	11.1	11.1	11.1	12.1	12.1	12.1	12.1	10.3	10.3
11	Restaurants and Accommodation Services	5.8	5.3	6.6	4.8	4.3	4.4	4.9	6.0	4.7	5.2	5.2	4.1	4.1	3.4	3.7	3.8	3.8
12	Insurance and Financial Services	1.4	3.4	1.1	5.3	5.5	5.5	5.8	5.8	9.0	4.6	4.6	4.6	4.6	4.0	4.0	2.6	8.3
13	Personal Care, Social Protection and Miscellaneous Goods	5.8	7.9	8.2	6.3	5.6	5.3	6.4	6.1	5.9	5.3	5.2	5.2	4.8	4.8	4.9	4.5	3.9

CY = Calendar Year

FY = Financial Year

Source: Uganda Bureau of Statistics

**TABLE 11: UGANDA MONTHLY INFLATION BY COICOP DIVISIONS (NOVEMBER 2023 – NOVEMBER 2024).**

Div.	PARTICULARS	Nov-23	Dec-23	Jan-24	Feb-24	Mar-24	Apr-24	May-24	Jun-24	Jul-24	Aug-24	Sep-24	Oct-24	Nov-24
	<b>Headline</b>	<b>0.2</b>	<b>0.1</b>	<b>0.0</b>	<b>0.5</b>	<b>0.5</b>	<b>0.4</b>	<b>0.2</b>	<b>0.0</b>	<b>0.0</b>	<b>0.2</b>	<b>0.2</b>	<b>0.5</b>	<b>0.2</b>
01	Food and Non-Alcoholic Beverages	-0.3	-1.3	0.2	-0.7	0.4	0.7	-0.9	-0.8	-0.6	0.7	0.1	0.5	0.7
02	Alcoholic Beverages, Tobacco and Narcotics	0.3	0.2	0.1	-0.4	1.2	0.0	0.1	0.2	-0.1	0.2	0.2	0.2	0.1
03	Clothing and Footwear	1.1	0.7	0.1	0.3	0.5	0.6	0.6	0.4	0.1	0.5	0.4	-0.1	-0.1
04	Housing, Water, Electricity, Gas and Other Fuels	-0.2	0.6	0.5	0.2	-0.1	0.3	0.8	0.0	0.4	0.2	1.0	0.4	-0.2
05	Furnishings, Household Equipment and Routine Household	0.1	0.1	0.5	0.2	0.1	0.3	0.7	0.8	0.1	-0.0	0.1	0.5	-0.3
06	Health	2.1	0.2	0.6	0.5	0.6	0.5	1.5	0.5	0.0	0.2	0.7	0.1	0.3
07	Transport	0.7	3.0	-1.9	-0.2	0.6	0.6	0.9	-0.1	0.4	-0.6	-0.0	1.6	-0.4
08	Information and Communication	0.1	0.0	-0.0	0.2	0.3	0.7	0.1	0.1	-0.0	-0.0	0.1	0.4	0.0
09	Recreation, Sport and Culture	1.2	0.2	0.3	0.8	2.2	-0.1	0.5	-0.2	1.3	0.3	0.0	-0.0	-0.1
10	Education Services	0.0	0.0	0.0	7.9	0.0	0.0	0.0	1.6	0.0	0.0	0.0	0.6	0.0
11	Restaurants and Accommodation Services	0.1	-0.2	0.4	1.8	0.4	-0.0	0.2	0.4	-0.0	-0.1	0.2	0.7	0.1
12	Insurance and Financial Services	-0.0	0.0	0.1	0.0	3.1	0.0	0.0	0.0	-0.0	-0.6	0.0	0.1	5.6
13	Personal Care, Social Protection and Miscellaneous Goods	0.3	0.7	0.9	0.6	0.2	-0.0	0.4	0.6	0.4	0.1	0.4	0.2	-0.3

Source: Uganda Bureau of Statistics

**TABLE 12: UGANDA CONSUMER PRICE INDEX (CPI) BY COICOP DIVISION: (2016/17) = 100.**

Div.	PARTICULARS	Weights	CY	CY	FY	FY	Nov-23	Dec-23	Jan-24	Feb-24	Mar-24	Apr-24	May-24	Jun-24	Jul-24	Aug-24	Sep-24	Oct-24	Nov-24
			2022	2023	2022/23	2023/24													
	<b>Headline (all items index)</b>	<b>1,000.00</b>	<b>121.15</b>	<b>127.63</b>	<b>125.80</b>	<b>129.77</b>	<b>129.50</b>	<b>129.67</b>	<b>129.71</b>	<b>130.37</b>	<b>131.03</b>	<b>131.53</b>	<b>131.73</b>	<b>131.77</b>	<b>131.78</b>	<b>132.02</b>	<b>132.34</b>	<b>133.01</b>	<b>133.31</b>
<b>01</b>	Food and Non-Alcoholic Beverages	<b>270.54</b>	122.03	134.91	132.21	134.67	136.52	134.68	134.97	133.97	134.55	135.43	134.19	133.16	132.32	133.26	133.44	134.07	135.04
<b>02</b>	Alcoholic Beverages, Tobacco and Narcotics	<b>38.80</b>	112.72	119.21	116.94	121.25	121.32	121.58	121.66	121.21	122.68	122.72	122.90	123.11	123.02	123.21	123.41	123.60	123.72
<b>03</b>	Clothing and Footwear	<b>69.77</b>	118.79	122.55	120.87	124.80	123.99	124.89	125.00	125.40	126.05	126.75	127.49	128.06	128.19	128.83	129.31	129.15	129.03
<b>04</b>	Housing, Water, Electricity, Gas and Other Fuels	<b>104.16</b>	116.10	120.14	117.99	123.09	122.15	122.86	123.51	123.73	123.66	124.00	125.00	125.00	125.52	125.72	126.98	127.47	127.17
<b>05</b>	Furnishings, Household Equipment and Routine Household	<b>48.37</b>	126.64	131.42	130.10	133.52	132.81	132.96	133.62	133.86	133.95	134.40	135.37	136.43	136.58	136.53	136.71	137.39	137.01
<b>06</b>	Health	<b>47.47</b>	119.32	122.32	120.57	126.37	125.77	125.98	126.75	127.38	128.13	128.82	130.80	131.46	131.47	131.68	132.57	132.75	133.20
<b>07</b>	Transport	<b>104.55</b>	149.36	148.59	151.19	151.14	150.29	154.74	151.74	151.37	152.26	153.19	154.53	154.45	155.05	154.12	154.11	156.54	155.87
<b>08</b>	Information and Communication	<b>44.32</b>	92.91	94.70	93.52	95.45	95.15	95.17	95.12	95.29	95.55	96.18	96.27	96.35	96.34	96.33	96.47	96.84	96.87
<b>09</b>	Recreation, Sport and Culture	<b>49.85</b>	113.49	115.07	115.05	117.60	116.55	116.74	117.13	118.12	120.74	120.66	121.30	121.07	122.63	123.01	123.06	123.03	122.88
<b>10</b>	Education Services	<b>57.96</b>	119.67	127.93	124.17	134.87	131.06	131.06	131.06	141.47	141.47	141.47	141.47	143.68	143.68	143.68	143.68	144.51	144.51
<b>11</b>	Restaurants and Accommodation Services	<b>87.38</b>	115.49	121.56	118.88	124.57	123.56	123.31	123.80	126.01	126.46	126.42	126.73	127.20	127.16	127.09	127.31	128.16	128.31
<b>12</b>	Insurance and Financial Services	<b>22.80</b>	116.74	120.67	117.86	124.07	123.17	123.18	123.27	123.29	127.06	127.07	127.07	127.07	127.03	126.29	126.29	126.41	133.45
<b>13</b>	Personal Care, Social Protection and Miscellaneous Goods	<b>54.04</b>	120.53	130.02	125.80	133.67	132.35	133.28	134.42	135.18	135.44	135.42	135.90	136.66	137.15	137.28	137.77	138.00	137.52

CY = Calendar Year

FY = Financial Year

Source: Uganda Bureau of Statistics

TABLE 13: UGANDA CONSUMER PRICE INDEX (CPI) AND INFLATION FOR CORE & NON CORE: (2016/17) = 100.

GROUP	Weights	CY	CY	FY	FY													
		2022	2023	2022/23	2023/24	Nov-23	Dec-23	Jan-24	Feb-24	Mar-24	Apr-24	May-24	Jun-24	Jul-24	Aug-24	Sep-24	Oct-24	Nov-24
Headline Index	1000.00	121.15	127.63	125.80	129.77	129.50	129.67	129.71	130.37	131.03	131.53	131.73	131.77	131.78	132.02	132.34	133.01	133.31
Core	839.62	121.07	126.79	125.15	128.91	128.02	128.66	128.69	129.87	130.38	130.65	130.95	131.36	131.59	131.79	131.99	132.63	132.93
Non - Core	160.38	121.55	132.07	129.22	134.29	137.25	134.96	135.05	132.99	134.46	136.13	135.79	133.93	132.74	133.23	134.16	134.97	135.30
Monthly % Change																		
Headline						0.2	0.1	0.0	0.5	0.5	0.4	0.2	0.0	0.0	0.2	0.2	0.5	0.2
Core						0.3	0.5	0.0	0.9	0.4	0.2	0.2	0.3	0.2	0.1	0.2	0.5	0.2
Non - Core						-0.0	-1.7	0.1	-1.5	1.1	1.2	-0.3	-1.4	-0.9	0.4	0.7	0.6	0.2
Annual % Change																		
Headline		7.2	5.4	8.8	3.2	2.6	2.6	2.8	3.4	3.3	3.2	3.6	3.9	4.0	3.5	3.0	2.9	2.9
Core		6.0	4.7	7.4	3.0	2.0	2.3	2.4	3.4	3.4	3.5	3.7	3.8	4.0	3.9	3.7	3.9	3.8
Non - Core		13.9	8.7	16.4	3.9	5.5	4.1	4.6	3.7	2.9	1.8	3.1	4.5	3.8	1.7	-0.5	-1.7	-1.4

CY = Calendar Year  
FY = Financial Year  
Source: Uganda Bureau of Statistics

TABLE 14: UGANDA CONSUMER PRICE INDEX (CPI) AND INFLATION FOR FOOD & NON FOOD: (2016/17) = 100.

GROUP	Weights	CY	CY	FY	FY													
		2022	2023	2022/23	2023/24	Nov-23	Dec-23	Jan-24	Feb-24	Mar-24	Apr-24	May-24	Jun-24	Jul-24	Aug-24	Sep-24	Oct-24	Nov-24
Headline Index	1000.00	121.15	127.63	125.80	129.77	129.50	129.67	129.71	130.37	131.03	131.53	131.73	131.77	131.78	132.02	132.34	133.01	133.31
Food	254.24	122.98	136.53	133.77	136.14	138.11	136.15	136.44	135.39	136.00	136.92	135.57	134.46	133.55	134.52	134.69	135.35	136.39
Non - Food	745.76	120.53	124.60	123.09	127.60	126.57	127.46	127.41	128.66	129.34	129.69	130.42	130.85	131.17	131.16	131.54	132.21	132.26
Monthly % Change																		
Headline						0.2	0.1	0.0	0.5	0.5	0.4	0.2	0.0	0.0	0.2	0.2	0.5	0.2
Food						-0.4	-1.4	0.2	-0.8	0.4	0.7	-1.0	-0.8	-0.7	0.7	0.1	0.5	0.8
Non - Food						0.5	0.7	0.0	1.0	0.5	0.3	0.6	0.3	0.2	0.0	0.3	0.5	0.0
Annual % Change																		
Headline		7.2	5.4	8.8	3.2	2.6	2.6	2.8	3.4	3.3	3.2	3.6	3.9	4.0	3.5	3.0	2.9	2.9
Food		14.4	11.0	19.7	1.8	2.0	0.0	-0.2	0.3	-0.7	-1.0	-1.1	-0.6	0.1	-0.7	-1.7	-2.4	-1.2
Non - Food		4.9	3.4	5.3	3.7	2.8	3.6	3.9	4.6	4.8	4.8	5.4	5.6	5.4	5.1	4.8	4.9	4.5

CY = Calendar Year  
FY = Financial Year  
Source: Uganda Bureau of Statistics

**TABLE 15: UGANDA CONSUMER PRICE INDEX (CPI) AND INFLATION FOR FOOD CROPS, OTHER GOODS, SERVICES AND ENERGY FUEL & UTILITIES: (2016/17) = 100.**

	Weights	CY	CY	FY	FY													
Group		2022	2023	2022/23	2023/24	Nov-23	Dec-23	Jan-24	Feb-24	Mar-24	Apr-24	May-24	Jun-24	Jul-24	Aug-24	Sep-24	Oct-24	Nov-24
Headline Index	1000.00	121.15	127.63	125.80	129.77	129.50	129.67	129.71	130.37	131.03	131.53	131.73	131.77	131.78	132.02	132.34	133.01	133.31
Other Goods	455.51	123.44	130.74	128.97	131.87	131.45	131.73	132.16	132.44	132.60	132.81	132.66	133.00	133.07	133.52	133.74	134.07	134.28
Services	384.11	118.26	122.10	120.61	125.39	123.97	125.02	124.57	126.82	127.75	128.09	128.93	129.41	129.84	129.73	129.92	130.92	131.32
Food Crops and Related Items	95.10	113.58	129.56	125.30	129.49	134.32	129.80	129.48	126.35	129.24	131.87	130.23	126.99	124.92	126.08	126.25	127.61	128.93
Energy Fuel and Utilities	65.28	133.16	135.72	134.93	141.30	141.51	142.48	143.17	142.67	142.05	142.35	143.90	144.05	144.13	143.64	145.69	145.71	144.60
Monthly % Change																		
Headline						0.2	0.1	0.0	0.5	0.5	0.4	0.2	0.0	0.0	0.2	0.2	0.5	0.2
Other Goods						0.1	0.2	0.3	0.2	0.1	0.2	-0.1	0.3	0.1	0.3	0.2	0.2	0.2
Services						0.6	0.9	-0.4	1.8	0.7	0.3	0.7	0.4	0.3	-0.1	0.1	0.8	0.3
Food Crops and Related Items						-0.3	-3.4	-0.2	-2.4	2.3	2.0	-1.2	-2.5	-1.6	0.9	0.1	1.1	1.0
Energy Fuel and Utilities						0.4	0.7	0.5	-0.4	-0.4	0.2	1.1	0.1	0.1	-0.3	1.4	0.0	-0.8
Annual % Change																		
Headline		7.2	5.4	8.8	3.2	2.6	2.6	2.8	3.4	3.3	3.2	3.6	3.9	4.0	3.5	3.0	2.9	2.9
Other Goods		9.0	5.9	10.4	2.2	1.4	1.2	1.3	1.8	1.6	2.0	1.8	2.0	2.0	2.1	2.1	2.1	2.2
Services		2.4	3.2	3.9	4.0	2.8	3.7	3.9	5.4	5.5	5.4	6.2	6.1	6.5	6.2	5.8	6.2	5.9
Food Crops and Related Items		14.9	14.1	22.7	3.3	6.4	2.5	2.6	0.5	-0.4	-2.4	-1.4	0.5	2.0	-0.6	-4.1	-5.3	-4.0
Energy Fuel and Utilities		12.8	1.9	8.9	4.7	4.3	6.4	7.4	8.0	7.6	7.9	9.5	10.3	6.2	4.7	4.5	3.3	2.2

CY = Calendar Year

FY = Financial Year

Source: Uganda Bureau of Statistics



**TABLE 16: UGANDA ANNUAL AND MONTHLY INFLATION BY INCOME GROUPS AND GEOGRAPHICAL AREAS :**

Basket	CY 2022	CY 2023	FY 2022/23	FY 2023/24	Nov-23	Dec-23	Jan-24	Feb-24	Mar-24	Apr-24	May-24	Jun-24	Jul-24	Aug-24	Sep-24	Oct-24	Nov-24
<b>Annual % Change</b>																	
Headline	7.2	5.4	8.8	3.2	2.6	2.6	2.8	3.4	3.3	3.2	3.6	3.9	4.0	3.5	3.0	2.9	2.9
Kampala High Income	6.4	4.3	7.3	3.4	2.3	2.6	3.2	4.4	4.2	4.5	4.6	5.2	5.4	4.8	4.0	4.4	4.1
Kampala Middle Income	7.2	5.6	9.8	2.2	1.3	1.1	1.6	1.4	1.4	2.0	2.0	2.7	3.4	2.6	1.8	1.9	2.3
Kampala Low Income	6.9	5.3	8.7	2.8	2.4	2.3	2.6	2.6	2.7	2.6	2.3	2.5	2.3	1.9	1.6	1.9	1.6
Masaka	7.0	5.1	8.3	3.3	3.1	2.6	3.0	4.3	3.7	3.0	3.6	4.0	3.9	3.9	3.5	3.1	3.8
Mbarara	6.4	4.9	8.2	3.0	2.5	2.9	2.5	3.6	2.6	2.6	4.1	4.0	4.0	4.0	3.9	4.2	4.1
Jinja	7.1	6.3	9.5	3.9	4.0	4.6	3.4	3.8	3.1	3.2	5.1	4.7	3.7	3.8	2.8	2.1	1.6
Mbale	9.1	5.4	10.2	2.1	1.7	2.2	1.6	1.1	1.4	1.4	2.7	1.8	1.9	1.4	1.7	1.2	1.4
Gulu	9.4	6.3	10.9	2.7	2.2	1.4	1.8	2.0	3.0	1.7	2.8	2.8	2.0	1.9	2.1	1.1	2.0
Arua	9.1	8.3	12.1	4.3	3.7	5.5	5.6	3.8	3.9	3.3	2.3	3.2	3.1	3.2	3.1	2.9	4.0
Fortportal	8.0	7.5	10.3	4.7	5.9	4.2	3.7	5.4	5.0	3.4	3.7	3.9	4.1	3.2	2.7	1.6	1.0
<b>Monthly % Change</b>																	
Headline					0.2	0.1	0.0	0.5	0.5	0.4	0.2	0.0	0.0	0.2	0.2	0.5	0.2
Kampala High Income					0.8	0.6	0.0	0.9	0.7	0.4	-0.1	0.3	-0.1	0.0	-0.1	0.9	0.5
Kampala Middle Income					0.3	0.0	-0.3	-0.3	1.0	0.6	0.2	0.3	-0.2	0.3	-0.3	0.4	0.7
Kampala Low Income					0.0	0.0	-0.2	-0.2	0.9	0.7	-0.4	0.3	-0.1	0.0	0.1	0.8	-0.3
Masaka					-0.7	-0.2	0.5	0.4	0.3	-0.4	0.2	0.2	0.8	0.5	0.8	0.7	0.0
Mbarara					-0.1	0.5	0.2	0.4	0.0	0.4	0.1	-0.5	0.3	0.8	1.7	0.2	-0.2
Jinja					0.3	0.7	-0.7	0.5	0.0	1.0	0.5	-0.8	0.1	0.1	0.6	-0.2	-0.2
Mbale					-0.5	-0.5	0.0	-0.2	0.5	0.6	1.5	-0.7	0.4	0.1	0.1	-0.1	-0.3
Gulu					-0.8	-1.3	0.9	0.8	0.5	0.1	0.5	-0.3	0.0	0.1	0.6	0.1	0.0
Arua					-0.2	1.0	1.6	0.3	0.1	-0.3	-0.2	0.4	0.1	0.0	0.3	-0.3	0.8
Fortportal					0.7	-0.6	-0.5	1.3	0.0	-0.2	-0.2	0.0	-0.5	0.5	0.6	0.4	0.2

CY = Calendar Year

FY = Financial Year

Source: Uganda Bureau of Statistics

**TABLE 17: UGANDA CONSUMER PRICE INDEX (CPI) BY INCOME GROUPS AND GEOGRAPHICAL AREAS : (2016/17) = 100.**

Basket	Weights	CY	CY	FY	FY	Nov-23	Dec-23	Jan-24	Feb-24	Mar-24	Apr-24	May-24	Jun-24	Jul-24	Aug-24	Sep-24	Oct-24	Nov-24
		2022	2023	2022/23	2023/24													
<b>Headline</b>	<b>1,000.00</b>	<b>121.15</b>	<b>127.63</b>	<b>125.80</b>	<b>129.77</b>	<b>129.50</b>	<b>129.67</b>	<b>129.71</b>	<b>130.37</b>	<b>131.03</b>	<b>131.53</b>	<b>131.73</b>	<b>131.77</b>	<b>131.78</b>	<b>132.02</b>	<b>132.34</b>	<b>133.01</b>	<b>133.31</b>
<b>Kampala High Income</b>	<b>350.61</b>	121.19	126.44	124.98	129.17	128.44	129.20	129.22	130.42	131.31	131.88	131.81	132.20	132.09	132.04	131.85	133.06	133.66
<b>Kampala Middle Income</b>	<b>147.09</b>	118.87	125.56	124.06	126.73	126.84	126.84	126.48	126.07	127.27	128.05	128.31	128.70	128.40	128.74	128.37	128.89	129.77
<b>Kampala Low Income</b>	<b>60.64</b>	120.33	126.66	124.81	128.26	128.29	128.25	127.98	127.68	128.83	129.71	129.17	129.58	129.50	129.54	129.62	130.70	130.36
<b>Masaka</b>	<b>58.22</b>	122.49	128.78	126.86	131.07	130.95	130.72	131.38	131.91	132.30	131.78	132.07	132.31	133.32	133.96	134.98	135.95	135.97
<b>Mbarara</b>	<b>87.02</b>	119.42	125.27	123.62	127.29	126.85	127.48	127.79	128.35	128.30	128.87	128.97	128.31	128.74	129.79	131.97	132.29	132.01
<b>Jinja</b>	<b>61.44</b>	119.34	126.82	124.38	129.26	129.16	130.01	129.12	129.79	129.79	131.13	131.83	130.79	130.91	131.02	131.78	131.53	131.22
<b>Mbale</b>	<b>61.82</b>	120.89	127.42	125.79	128.49	128.23	127.62	127.56	127.30	127.94	128.77	130.74	129.80	130.34	130.43	130.60	130.45	130.01
<b>Gulu</b>	<b>68.87</b>	127.01	135.00	132.97	136.59	136.35	134.59	135.75	136.81	137.50	137.59	138.30	137.95	137.98	138.08	138.96	139.03	139.07
<b>Arua</b>	<b>27.51</b>	125.03	135.34	132.14	137.82	135.80	137.14	139.33	139.71	139.82	139.45	139.24	139.75	139.87	139.94	140.38	140.01	141.17
<b>Fortportal</b>	<b>76.77</b>	121.97	131.07	127.78	133.78	135.24	134.39	133.71	135.40	135.40	135.14	134.91	134.93	134.26	134.98	135.78	136.36	136.61

CY = Calendar Year  
FY = Financial Year  
Source: Uganda Bureau of Statistics