



UGANDA BUREAU OF STATISTICS

P.O. Box 7186, Kampala; Tel: 0414 – 706000; Fax: 0414 – 237553; Email: ubos@ubos.org; Website: www.ubos.org



PRESS RELEASE

CONSUMER PRICE INDICES AND INFLATION FEBRUARY 2026

1.1 Annual Headline Inflation

The Annual Inflation as measured by the Consumer Price Index for Uganda for the 12 months to February 2026 is 2.9 percent compared to 3.2 percent registered in the year ended January 2026, see Table 1 and Figure 1 below.

In particular, Annual Core Inflation slowed down to 3.0 percent in the year ending February 2026 compared to 3.3 percent recorded in the year ended January 2026. Annual Services Inflation recorded 4.1 percent in February 2026 compared to 4.8 percent registered in January 2026. This is mainly due to Annual Passenger transport by Air Inflation (recorded at 0.5 percent in the year ending February 2026 compared to 8.8 percent recorded in the year ended January 2026) and Annual Health Services Inflation (recorded at 2.8 percent compared to 3.8 percent registered in the year ended January 2026). Annual Core Goods Inflation registered 2.1 percent in the year ending February 2026, same rate recorded in the year ended January 2026. This is attributed to Dried fish whose rate of price change is 8.5 percent compared to 2.8 percent recorded in the year ended January 2026, Maize flour (whose rate of price change is 10.8 percent compared to 5.0 percent recorded in the year ended January 2026), Bread (whose rate of price change is 1.3 percent compared to minus 1.8 percent recorded in the year ended January 2026) and Refined oil (whose rate of price change is 4.1 percent compared to 2.7 percent recorded in the year ended January 2026).

In addition, Annual Food Crops and Related Items Inflation slowed down to 1.8 percent in the year ending February 2026 compared to 3.0 percent registered in the year ended January 2026. This is attributed to Tomatoes whose rate of price change is minus 17.6 percent compared to minus 10.1 percent recorded in the year ended January 2026, Dry beans (whose rate of price change is minus 1.1 percent compared to 1.0 percent recorded in the year ended January 2026), Fresh leaf vegetables (whose rate of price change is minus 0.2 percent compared to 7.5 percent recorded in the year ended January 2026), Passion fruits (whose rate of price change is 7.7 percent compared to 11.2 percent recorded in the year ended January 2026) and Green pepper (whose rate of price change is 12.7 percent compared to 33.7 percent recorded in the year ended January 2026).

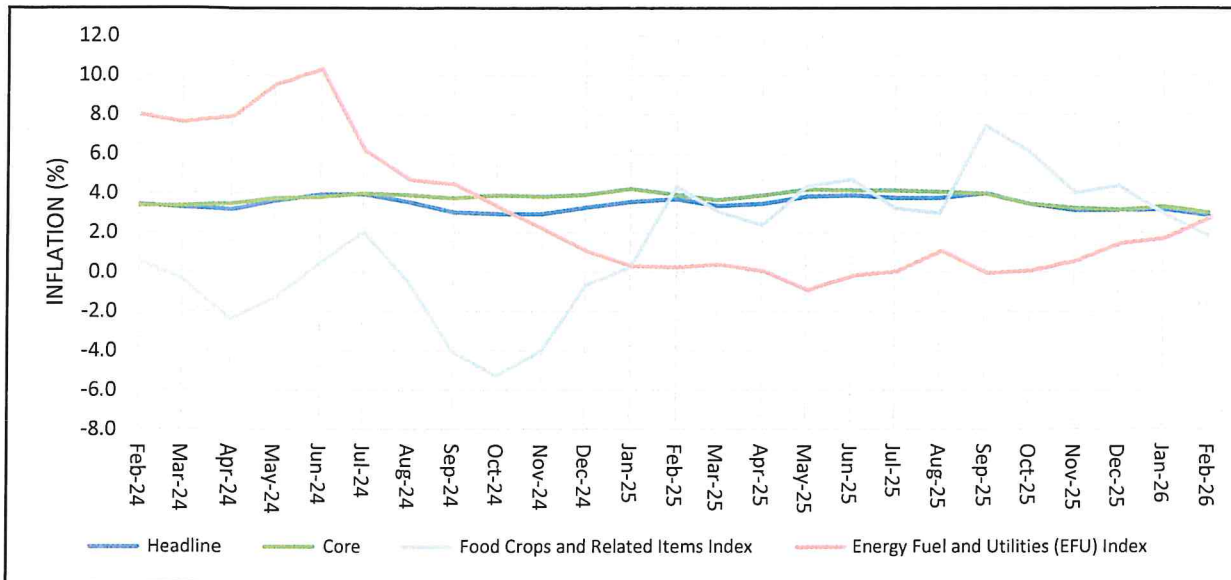
The Annual Energy Fuel and Utilities (EFU) Inflation increased to 2.7 percent in the year ending February 2026 compared to 1.7 percent registered in the year ended January 2026. This is mainly due to Annual Liquid Energy Fuels Inflation that increased to 1.7 percent in the year ending February 2026 compared to 0.2 percent recorded in the year ended January 2026. Particularly, Petrol price increased by 3.4 percent compared to 1.3 percent recorded in the year ended January 2026) and Diesel price increased by 0.8 percent compared to minus 0.7 percent recorded in the year ended January 2026). In addition, Annual Solid Fuels Inflation increased by 7.3 percent in the year ending February 2026 compared to 5.3 percent recorded in the year ended January 2026. Particularly, Charcoal price increased by 6.0 percent compared to 4.6 percent recorded in the year ended January 2026 and Firewood price increased by 10.3 percent compared to 6.9 percent recorded in the year ended January 2026.

Table 1 and Figure 1 below show the components of the Annual Headline Inflation for the year ending February 2026.
Table 1: Annual Headline, Core, Food Crops and EFU Inflation for January 2026 and February 2026.

Description	Weights	January 2026	February 2026
Headline	1000	3.2	2.9
Core	839.6200	3.3	3.0
Other Goods	455.5070	2.1	2.1
Services	384.1130	4.8	4.1
Food Crops and Related Items	95.1046	3.0	1.8
Energy Fuel and Utilities (EFU)	65.2755	1.7	2.7

CNM

Figure 1: Annual Headline, Core, Food Crops and EFU Inflation: February 2024 - February 2026



The overall Annual Consumer Price Indices for the 12 months to February 2026 are shown in Table 2 below.

Table 2: Overall Annual CPI and Inflation (Base: 2016/17=100)

Month	Overall CPI	Annual Inflation
February 2026	139.06	2.9
January 2026	138.58	3.2
December 2025	138.11	3.1
November 2025	137.46	3.1
October 2025	137.59	3.4
September 2025	137.61	4.0
August 2025	136.97	3.8
July 2025	136.73	3.8
June 2025	136.90	3.9
May 2025	136.77	3.8
April 2025	136.09	3.5
March 2025	135.43	3.4
February 2025	135.19	3.7
January 2025	134.33	3.6

Chris N. Mukiza (PhD)

EXECUTIVE DIRECTOR/CHIEF STATISTICIAN

Key Annual Inflation Drivers

Annual Services Inflation for the year ending February 2026 is at 4.1% compared to 4.8% in the year ended January 2026

Changes in Prices for selected items under Services

January 2026

- Passenger Transport Services by Air 8.8%
- Health Services 3.8%
- Education Services 7.6%



February 2026

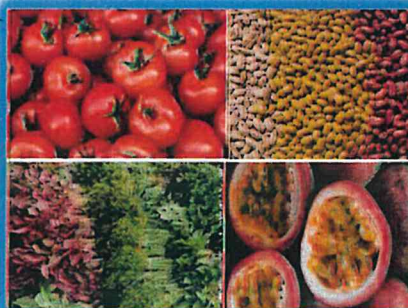
- Passenger Transport Services by Air 0.5%
- Health Services 2.8%
- Education Services 4.1%

Annual Food Crops and Related Items Inflation for the year ending February 2026 is at 1.8% compared to 3.0% in the year ended January 2026

Changes in prices for selected items under Food Crops and Related Items

January 2026

- Tomatoes -10.1%
- Dry beans 1.0%
- Fresh leaf vegetables 7.5%
- Passion fruits 11.2%



February 2026

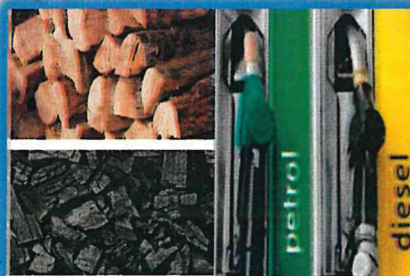
- Tomatoes -17.6%
- Dry beans -1.1%
- Fresh leaf vegetables -0.2%
- Passion fruits 7.7%

Annual Energy, Fuel and Utilities Inflation for the year ending February 2026 is at 2.7% compared to 1.7% in the year ended January 2026

Changes in prices for selected items under Energy, Fuel and Utilities

January 2026

- Charcoal 4.6%
- Firewood 6.9%
- Petrol 1.3%
- Diesel -0.7%



February 2026

- Charcoal 6.0%
- Firewood 10.3%
- Petrol 3.4%
- Diesel 0.8%

1.2 Annual Inflation by COICOP Divisions

According to the Classification of Individual Consumption According to Purpose (COICOP), the main drivers to the 2.9 percent Inflation were 'Education Services' Inflation that registered 4.1 percent in the year ending February 2026 compared to 7.6 percent recorded in the year ended January 2026. 'Food and Non-Alcoholic Beverages' Inflation registered 2.8 percent in the year ending February 2026 compared to 3.0 percent registered in the year ended January 2026. 'Health' Inflation registered 2.8 percent for the year ending February 2026 compared to 3.8 percent registered for the year ended January 2026. 'Transport' Inflation registered 1.5 percent in the year ending February 2026 compared to 1.8 percent recorded in the year ended January 2026. 'Restaurants and Accommodation Services' Inflation recorded 4.0 percent in the year ending February 2026 compared to 4.4 percent registered in the year ended January 2026. 'Alcoholic Beverages, Tobacco and Narcotics' Inflation registered 0.7 percent for the year ending February 2026 compared to 1.0 percent recorded for the year ended January 2026. 'Information and Communication' Inflation registered 2.0 percent in the year ending February 2026 compared to 2.1 percent recorded in the year ended January 2026. 'Insurance and Financial Services' Inflation registered 12.3 percent in the year ending February 2026 same rate recorded in the year ended January 2026. 'Furnishings, Household Equipment and Routine Household' Inflation registered 1.2 percent in the year ending February 2026 same rate recorded in the year ended January 2026.

However, 'Housing, Water, Electricity, Gas and Other Fuels' Inflation increased to 3.9 percent in the year ending February 2026 compared to 3.1 percent registered in the year ended January 2026. 'Clothing and Footwear' Inflation increased to 1.9 percent in the year ending February 2026 compared to 1.8 percent recorded in the year ended January 2026. 'Recreation, Sport and Culture' Inflation increased to 2.2 percent in the year ending February 2026 compared to 2.1 percent registered in the year ended January 2026. 'Personal Care, Social Protection and Miscellaneous Goods' Inflation increased to 2.2 percent for the year ending February 2026 compared to 2.0 percent registered for the year ended January 2026, see Table 3 below.

Table 3: Annual Changes in the Consumer Price Indices for the COICOP Divisions.

13 COICOP Divisions	Weight	Annual % Change January 2025 - January 2026	Annual % Change February 2025 - February 2026
Food and Non-Alcoholic Beverages	270.5390	3.0	2.8
Alcoholic Beverages, Tobacco and Narcotics	38.7958	1.0	0.7
Clothing and Footwear	69.7729	1.8	1.9
Housing, Water, Electricity, Gas and Other Fuels	104.1617	3.1	3.9
Furnishings, Household Equipment and Routine Household	48.3672	1.2	1.2
Health	47.4695	3.8	2.8
Transport	104.5479	1.8	1.5
Information and Communication	44.3216	2.1	2.0
Recreation, Sport and Culture	49.8494	2.1	2.2
Education Services	57.9558	7.6	4.1
Restaurants and Accommodation Services	87.3791	4.4	4.0
Insurance and Financial Services	22.7953	12.3	12.3
Personal Care, Social Protection and Miscellaneous Goods	54.0447	2.0	2.2
Overall	1,000	3.2	2.9

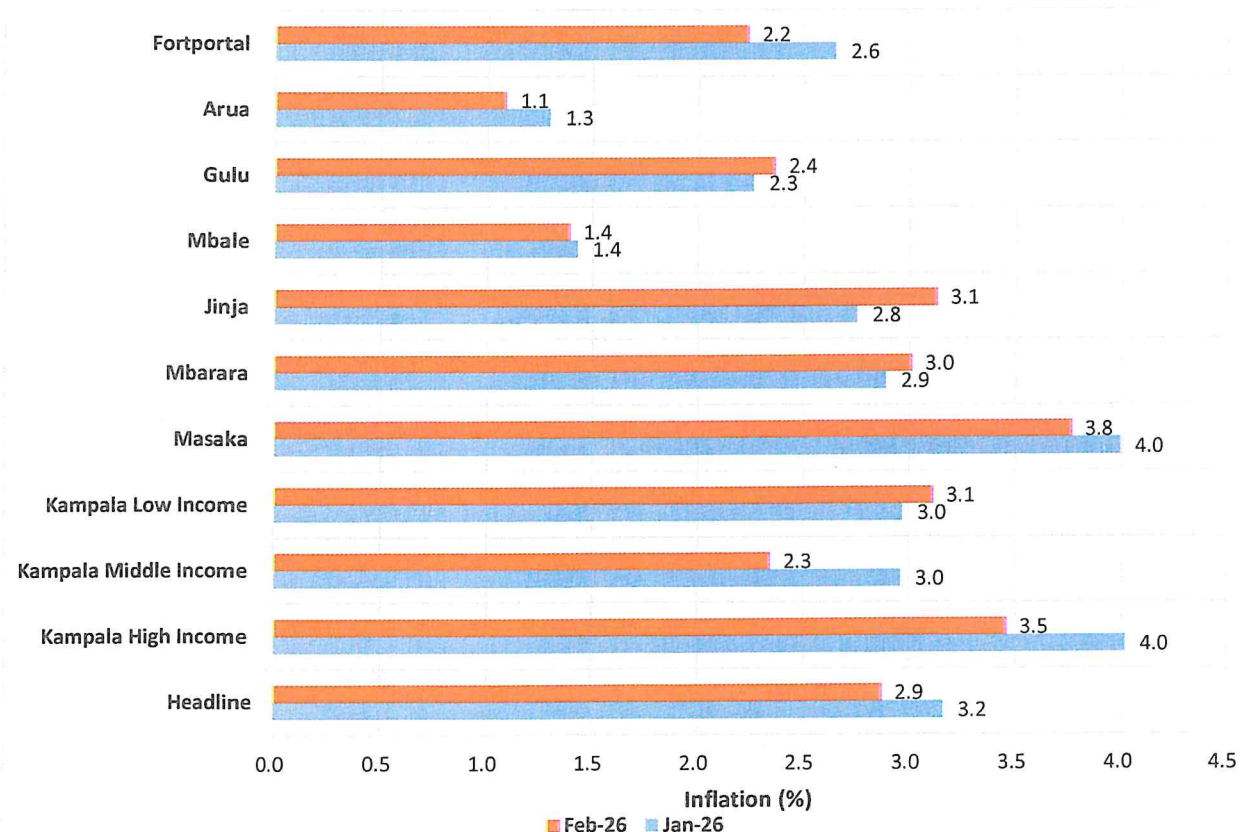
1.3 Annual Headline Inflation by CPI Geographical Center

Analysis by geographical areas and income groups revealed that Masaka registered the highest Inflation at 3.8 percent for the year ending February 2026 compared to 4.0 percent recorded in January 2026. This was mainly driven by annual 'Food and Non-Alcoholic Beverages' Inflation that increased to 2.4 percent in February 2026 compared to 1.4 percent registered in January 2026. In addition, annual 'Personal Care, Social Protection and Miscellaneous Goods' Inflation increased to 2.2 percent in February 2026 compared to 1.4 percent registered in January 2026.

The second highest Inflation was registered in Kampala High Income at 3.5 percent for the year ending February 2026 compared to 4.0 percent recorded in January 2026. This was mainly driven by annual 'Housing, Water, Electricity, Gas and Other Fuels' inflation that increased to 3.8 percent in February 2026 compared to 2.2 percent registered in January 2026. In addition, Annual 'Restaurants and Accommodation Services' Inflation increased to 5.1 percent in February 2026 compared to 4.3 percent registered in January 2026.

The least Annual Inflation was registered in Arua Centre at 1.1 percent for the year ending February 2026 compared to 1.3 percent recorded in January 2026. This was mainly due to the annual 'Food and Non-Alcoholic Beverages' Inflation that registered 0.1 percent in February 2026 compared to 0.6 percent registered in January 2026. In addition, Annual 'Alcoholic Beverages, Tobacco and Narcotics' Inflation registered minus 1.6 percent in February 2026 compared to minus 0.2 percent registered in January 2026.

Figure 2: Annual Inflation by CPI Geographical Center for the 12 months to January 2026 and February 2026



1.4 Monthly Inflation.

The Monthly Headline Inflation for February 2026 increased by 0.3 percent same rate as recorded in January 2026, Table 4 below.

This was mainly due to monthly Core Inflation that increased by 0.3 percent in February 2026 from the 0.5 percent rise registered in January 2026. This was mainly due to monthly Core Goods Inflation that increased by 0.4 percent in February 2026 from the 0.3 percent rise recorded in January 2026. In addition, monthly Services Inflation increased by 0.2 percent in February 2026 from the 0.7 percent rise recorded in January 2026.

Monthly Food Crops and Related Items Inflation increased by 0.4 percent in February 2026 from the 0.7 percent drop recorded in January 2026. This was attributed to the increase in prices of Tomatoes by 3.0 percent in February 2026 from the 1.7 percent drop recorded in January 2026, fresh cassava by 4.1 percent in February 2026 from the 7.0 percent rise recorded in January 2026, green cabbage by 6.2 percent in February 2026 from the 3.1 percent drop recorded in January 2026, Irish potatoes by 2.4 percent in February 2026 from the 3.9 percent rise recorded in January 2026 and Fresh Leaf Vegetables by 3.9 percent in February 2026 from the 1.2 percent rise recorded in January 2026.

Monthly Energy Fuel and Utilities (EFU) Inflation increased by 0.6 percent rise in February 2026 from the 0.0 percent registered in January 2026. This was mainly due to monthly Liquid Energy Fuels Inflation that increased by 1.0 percent in February 2026 from the 0.3 percent rise registered in January 2026. Particularly, petrol prices increased by 1.4 percent in February 2026 from the 0.5 percent rise recorded in January 2026 and diesel prices increased by 0.8 percent in February 2026 from the 0.2 percent rise recorded in January 2026. In addition, monthly Solid Fuels Inflation increased by 0.9 percent in February 2026 from the 0.3 percent drop registered in January 2026. Particularly, firewood prices increased by 2.1 percent in February 2026 from the 1.3 percent rise recorded in January 2026 and charcoal prices increased by 0.4 percent in February 2026 from the 1.0 percent drop registered in January 2026.

Table 4: Monthly Headline, Core, Food Crops and EFU Inflation for January 2026 and February 2026.

Description	Weights	January 2026	February 2026
Headline	1000.0000	0.3	0.3
Core	839.6200	0.5	0.3
Other Goods	455.5070	0.3	0.4
Services	384.1130	0.7	0.2
Food Crops and Related Items	95.1046	-0.7	0.4
Energy Fuel and Utilities (EFU)	65.2755	0.0	0.6

The overall monthly Consumer Price Indices and Inflation from January 2025 to February 2026 are shown in Table 5 below.

Table 5: Overall Monthly CPI and Rates of Inflation (Base: 2016/17=100)

Month	Overall CPI	Monthly Inflation
February 2026	139.06	0.3
January 2026	138.58	0.3
December 2025	138.11	0.5
November 2025	137.46	-0.1
October 2025	137.59	0.0
September 2025	137.61	0.5
August 2025	136.97	0.2
July 2025	136.73	-0.1
June 2025	136.90	0.1
May 2025	136.77	0.5
April 2025	136.09	0.5
March 2025	135.43	0.2
February 2025	135.19	0.6
January 2025	134.33	0.3

1.5 Monthly Inflation by COICOP Divisions

According to the Classification of Individual Consumption According to Purpose (COICOP), monthly Food and Non-alcoholic Beverages Inflation increased by 0.8 percent in February 2026 from the 0.1 percent rise recorded in January 2026. Monthly Education Services Inflation increased by 1.0 percent in February 2026 from the 0.0 percent recorded in January 2026. Monthly Housing, Water, Electricity, Gas and Other Fuels Inflation increased by 0.6 percent in February 2026 from the 0.4 percent rise recorded in January 2026. Monthly Restaurants and Accommodation Services Inflation increased by 0.2 percent in February 2026 from the 0.1 percent rise recorded in January 2026. Monthly Clothing and Footwear Inflation increased by 0.3 percent in February 2026 from the 0.1 percent rise recorded in January 2026. Monthly Recreation, Sport and Culture Inflation increased by 0.4 percent in February 2026 from 0.4 percent drop recorded in January 2026. Monthly Personal Care, Social Protection and Miscellaneous Goods Inflation increased by 0.3 percent in February 2026 from 0.1 percent drop recorded in January 2026. Monthly Furnishings, Household Equipment and Routine Household Inflation increased by 0.1 percent in February 2026 from the 0.2 percent rise recorded in January 2026 and monthly Health Inflation increased by 0.1 percent in February 2026 from 0.0 percent recorded in January 2026.

However, Monthly Transport Inflation dropped by 0.6 percent in February 2026 from 0.3 percent rise recorded in January 2026. Monthly Alcoholic Beverages, Tobacco and Narcotics Inflation registered 0.0 percent in February 2026 from 0.1 percent rise recorded in January 2026. Monthly Information and Communication Inflation recorded 0.0 percent in February 2026 same rate recorded in January 2026, while monthly Insurance and Financial Services Inflation recorded 0.0 percent in February 2026 from the 9.1 percent rise recorded in January 2026.

Table 6: Monthly Changes in the Consumer Price Indices for the COICOP Divisions.

13 COICOP Divisions	Weight	Monthly %Change December 2025- January 2026	Monthly % Change January 2026 – February 2026
Food and Non-Alcoholic Beverages	270.5390	0.1	0.8
Alcoholic Beverages, Tobacco and Narcotics	38.7958	0.1	0.0
Clothing and Footwear	69.7729	0.1	0.3
Housing, Water, Electricity, Gas and Other Fuels	104.1617	0.4	0.6
Furnishings, Household Equipment and Routine Household	48.3672	0.2	0.1
Health	47.4695	0.0	0.1
Transport	104.5479	0.3	-0.6
Information and Communication	44.3216	0.0	0.0
Recreation, Sport and Culture	49.8494	-0.4	0.4
Education Services	57.9558	0.0	1.0
Restaurants and Accommodation Services	87.3791	0.1	0.3
Insurance and Financial Services	22.7953	9.1	0.0
Personal Care, Social Protection and Miscellaneous Goods	54.0447	-0.1	0.3
Overall	1,000	0.3	0.3

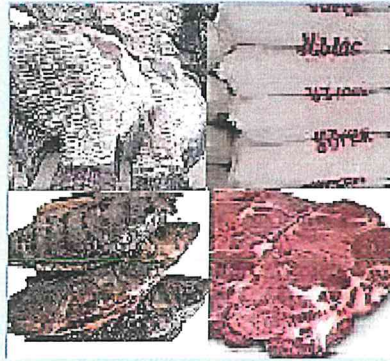
Key Monthly Inflation Drivers

Monthly Core goods Inflation for February 2026 is 0.4% from 0.3% in January 2026

Changes in Prices for selected items under Core goods

January 2026

- Smoked Tilapia 0.0%
- Maize Flour -2.2%
- Fresh Tilapia 8.3%
- Beef 1.7%



February 2026

- Smoked Tilapia 14.3%
- Maize Flour 3.3%
- Fresh Tilapia 5.0%
- Beef 0.5%

Monthly Food Crops and Related Items Inflation for February 2026 is 0.4% from -0.7% in January 2026.

Changes in Prices for selected items under Food Crops and Related Items

January 2026

- Tomatoes -1.7%
- Fresh Cassava 7.0%
- Green Cabbage -3.1%
- Irish Potatoes 3.9%
- Fresh Leaf Vegetable 1.2%



February 2026

- Tomatoes 3.0%
- Fresh Cassava 4.1%
- Green Cabbage 6.2%
- Irish Potatoes 2.4%
- Fresh Leaf Vegetable 3.9%

Monthly Energy, Fuel and Utilities Inflation for February 2026 is 0.6% from 0.0% in January 2026

Changes in Prices for selected items under Energy, Fuel and Utilities

January 2026

- Petrol 0.5%
- Diesel 0.2%
- Charcoal -1.0%
- Firewood 1.3%



February 2026

- Petrol 1.4%
- Diesel 0.8%
- Charcoal 0.4%
- Firewood 2.1%

Relative to February 2025 and January 2026, the national average retail prices of selected commodities in February 2026 are shown in Table 7 below.

Table 7: National Average Retail Prices of Selected Commodities

Commodity Name	Quantity	Unit of Measure	Average Price February 2025	Average Price January 2026	Average Price February 2026
Maize Flour	1	Kg	2,422	2,624	2,718
Smoked Tilapia	1	Kg	36,547	36,882	40,894
Fresh Tilapia	1	Kg	16,571	16,017	16,768
Beef	1	Kg	15,778	17,435	17,529
Fresh cassava	1	Kg	810	916	956
Irish potatoes	1	Kg	2,035	1,945	2,036
Onions	1	Kg	3,368	3,661	3,665
Matooke	1	Kg	1,141	1,177	1,154
Tomatoes	1	Kg	2,781	2,304	2,401
Green Cabbage	1	Kg	834	1,075	1,154
Petrol	1	Litre	4,986	5,058	5,130
Diesel	1	Litre	4,659	4,693	4,739