

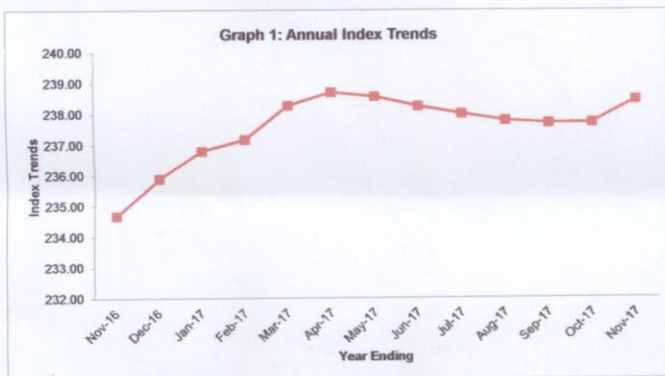
# Construction Sector Indices

## October to November 2017

### HIGHLIGHTS

**Annual Changes** show that the average input prices at the Whole Construction Sector (covering material prices, wage rates & equipment hire rates) increased by 1.6% for the year ending November 2017 compared to 0.1% for the year ended November 2016; Similarly, for the year ending October 2017, the sector registered a rise in the input prices of 1.4% compared to a drop of 0.4% for the year ended October 2016 as shown in Fig.1.

Fig 1: Trends of the Whole Construction Sector Index, November 2016 to November 2017



The aggregate annual rise in input prices of 1.6% at Whole Sector level for the year ending November 2017 is explained by:

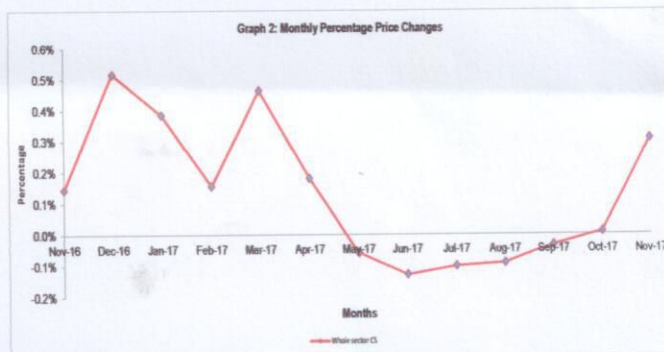
- An increase of 1.7% in prices of inputs for Residential building.
- 1.0% increase in prices of inputs for Non-Residential buildings, and
- An increase of 3.2% in prices of inputs for the Civil works sub sector.

**Monthly Changes** show that in the month of November 2017, prices of inputs into the Whole Construction Sector increased by 0.3% compared to an insignificant change for the month ended October 2017. Similarly, prices of inputs into the whole sector experienced an insignificant positive change in October 2017 compared to an insignificant change for the month ended September 2017.

The price changes in inputs in the month of November were influenced by an increase in the sub sectors of:

- Buildings Non Residential (0.5%),
- Buildings Residential (0.2%).

Fig 2: Monthly Price Changes at the Whole Construction Sector Index, November 2016 to November 2017



### Basic Headings (Monthly Changes)

Overall, the prices of Basic Headings items (material inputs, equipment hire and wage rates) increased in November 2017 compared to October 2017. Notable increases were registered in;

- Steel bars (0.4%) from -0.2% in October 2017,
- Electrical wire & cable (3.6%) from 0.6% in October 2017
- Diesel (0.2%) from 0.9% in October 2017.

**Ben Paul Mungyereza**  
Executive Director,  
Wednesday, 20<sup>th</sup> November, 2017

- Notes: 1 This release contains composite input price indices for the construction sector and their "basic heading" components.
- 2 To obtain the percentage change in prices between any two periods, divide the index number in the second period by the index number in the first period, subtract 1 and multiply the result by 100.
- 3 **Some revisions have been made due to availability of more data initially imputed.**
- 4 Comments can be addressed to: Mr. Peter Opio, Director, Business & Industry Statistics, Uganda Bureau of Statistics on email [peter.opio@ubos.org](mailto:peter.opio@ubos.org) & phone no: 0414 706016 or 0782 319690 (Mob).  
The next release will be in the third week of January, 2018

Statistical Release Table A  
Construction sector price indices

Jan-Mar 2006 = 100

	Whole sector		All buildings		Residential buildings					
					Total		Formal		Own-account	
	2016	2017	2016	2017	2016	2017	2016	2017	2016	2017
Year	234.65		230.28		206.67		241.43		172.62	
Q1	234.40	237.42	230.04	232.78	205.42	210.82	242.50	244.13	168.99	178.28
Q2	236.44	238.51	232.66	233.39	207.71	211.62	242.94	245.35	173.17	178.57
Q3	232.76	237.84	227.83	232.70	204.77	211.83	238.83	246.87	171.42	177.79
Q4	234.98		230.58		208.79		241.45		176.92	
Jan	233.91	236.81	228.81	232.18	204.53	210.18	241.65	242.98	168.05	178.15
Feb	234.91	237.18	230.70	232.54	205.99	210.55	243.18	243.61	169.44	178.27
Mar	234.38	238.28	230.62	233.63	205.74	211.74	242.66	245.81	169.47	178.43
Apr	237.34	238.71	233.71	233.60	208.21	211.73	244.12	245.65	173.00	178.53
May	236.26	238.56	232.61	233.44	207.18	211.70	242.95	245.41	172.10	178.67
Jun	235.72	238.26	231.65	233.12	207.72	211.42	241.76	245.00	174.42	178.49
Jul	233.82	238.01	228.94	233.16	205.61	211.31	240.29	245.60	171.63	177.85
Aug	232.55	237.79	227.50	232.49	204.92	212.00	239.28	247.31	171.26	177.77
Sep	231.93	237.71	227.05	232.43	203.77	212.17	236.90	247.70	171.37	177.77
Oct	234.35	237.73	229.90	232.22	208.29	211.66	240.81	247.88	176.54	176.76
Nov	234.68	238.46	230.26	233.08	208.61	212.09	241.51	248.40	176.48	177.11
Dec	235.90		231.58		209.48		242.02		177.73	

	Non-res buildings		Civil works		Roads paved		Roads gravel		Water projects	
	2016	2017	2016	2017	2016	2017	2016	2017	2016	2017
Year	244.54		259.05		271.00		258.76		240.06	
Q1	244.95	245.98	258.74	263.11	271.67	273.94	256.74	267.71	239.51	241.97
Q2	247.77	246.46	258.17	266.52	270.34	277.88	254.59	272.47	241.65	243.29
Q3	241.75	245.17	259.77	266.05	271.73	277.28	261.26	270.95	239.24	243.94
Q4	243.67		259.51		270.29		262.46		239.84	
Jan	243.50	245.41	261.72	262.45	274.52	273.31	263.03	267.24	239.87	241.06
Feb	245.67	245.76	258.56	262.87	271.63	273.66	256.30	267.77	239.30	241.54
Mar	245.69	246.79	255.93	264.02	268.85	274.85	250.88	268.13	239.34	243.30
Apr	249.17	246.74	258.38	266.66	270.78	278.09	254.39	272.86	241.76	243.09
May	248.03	246.50	257.39	266.57	269.60	277.90	253.61	272.37	240.92	243.52
Jun	246.11	246.14	258.76	266.33	270.62	277.66	255.78	272.17	242.27	243.26
Jul	243.02	246.30	260.58	265.73	273.09	277.00	261.02	270.49	239.97	243.65
Aug	241.12	244.72	260.05	265.96	272.56	277.12	261.12	271.02	238.89	243.83
Sep	241.11	244.50	258.68	266.45	269.53	277.71	261.64	271.33	238.85	244.33
Oct	242.88	244.49	259.11	267.58	269.91	279.01	262.03	272.95	239.43	244.70
Nov	243.27	245.64	259.35	267.68	270.20	279.12	261.89	273.12	239.89	244.73
Dec	244.87		260.07		270.76		263.44		240.21	

Source: Uganda Bureau of Statistics

Statistical Release Table B

Basic heading price indices, CPI Rescaled and Equipment charge out rates and cement quantities

Jan-Mar 2006 = 100

	Timber		Paint		PVC/HDPE pipes		Water tanks		Burnt clay bricks & tiles	
	2016	2017	2016	2017	2016	2017	2016	2017	2016	2017
Year	244.10		184.92		183.86		160.57		290.12	
Q1	244.10	244.10	193.40	183.70	182.53	184.30	160.44	162.67	285.53	285.16
Q2	244.10	244.10	182.53	184.24	184.30	185.11	160.61	164.14	304.18	285.18
Q3	244.10	244.09	181.52	182.50	184.30	186.55	160.61	164.14	285.42	285.22
Q4	244.10		182.25		184.30		160.61		285.33	
Jan	244.10	244.10	192.39	183.70	182.53	184.30	160.44	160.61	288.22	285.33
Feb	244.10	244.10	193.91	183.70	182.53	184.30	160.44	163.25	284.19	284.97
Mar	244.10	244.10	193.91	183.70	182.53	184.30	160.44	164.14	284.19	285.18
Apr	244.10	244.10	184.54	183.71	184.30	184.30	160.61	164.14	291.15	285.18
May	244.10	244.10	181.52	182.90	184.30	185.52	160.61	164.14	299.72	285.18
Jun	244.10	244.10	181.52	186.10	184.30	185.52	160.61	164.14	321.68	285.18
Jul	244.10	244.10	181.52	187.57	184.30	185.52	160.61	164.14	285.42	285.18
Aug	244.10	244.08	181.52	179.97	184.30	187.06	160.61	164.14	285.42	285.23
Sep	244.10	244.08	181.52	179.97	184.30	187.06	160.61	164.14	285.42	285.23
Oct	244.10	244.08	181.52	179.97	184.30	187.06	160.61	164.14	285.33	285.20
Nov	244.10	244.08	181.52	179.97	184.30	187.06	160.61	164.14	285.33	285.18
Dec	244.10		183.70		184.30		160.61		285.33	

	Cement		Concrete articles		Steel bars		Roofing sheets		Other iron & steel	
	2016	2017	2016	2017	2016	2017	2016	2017	2016	2017
Year	191.04		170.34		211.86		164.34		218.95	
Q1	189.89	189.93	163.76	190.07	177.32	274.29	172.94	178.71	225.31	221.55
Q2	194.43	187.87	163.76	189.75	187.33	292.85	147.32	177.04	223.98	218.27
Q3	189.93	181.56	163.76	209.38	237.17	295.04	160.13	197.84	213.82	226.57
Q4	189.93		190.07		245.63		176.96		212.71	
Jan	190.90	189.93	163.76	190.07	177.32	261.11	178.87	179.09	226.25	221.26
Feb	189.39	189.93	163.76	190.07	177.32	268.66	171.93	179.13	224.55	221.32
Mar	189.39	189.93	163.76	190.07	177.32	293.10	168.04	177.92	225.12	222.08
Apr	194.43	189.93	163.76	190.07	186.94	294.19	152.90	181.15	224.59	219.26
May	194.43	188.23	163.76	189.60	186.94	292.45	143.07	176.23	224.59	218.15
Jun	194.43	185.45	163.76	189.60	188.12	291.90	146.00	173.73	222.76	217.40
Jul	189.93	184.80	163.76	189.60	237.16	292.12	143.24	180.77	220.51	222.72
Aug	189.93	182.87	163.76	219.28	237.16	296.50	168.50	203.03	211.03	223.25
Sep	189.93	177.01	163.76	219.28	237.21	296.50	168.66	209.70	209.93	233.75
Oct	189.93	177.01	190.07	211.26	238.32	295.93	176.88	212.95	210.62	235.76
Nov	189.93	177.01	190.07	211.26	240.94	297.22	172.89	215.16	215.77	235.77
Dec	189.93		190.07		257.63		181.12		211.75	

Source: Uganda Bureau of Statistics

Statistical Release Table B (continued)

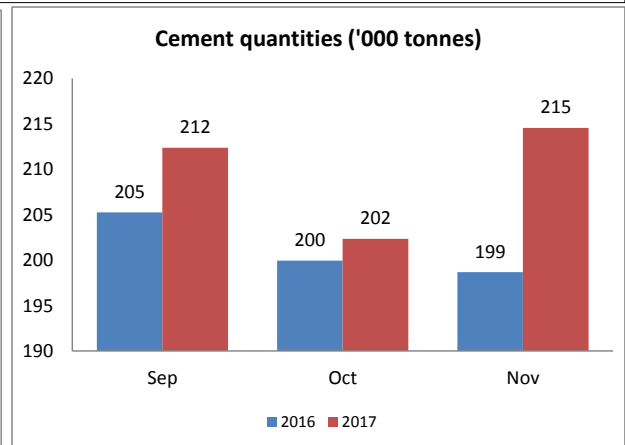
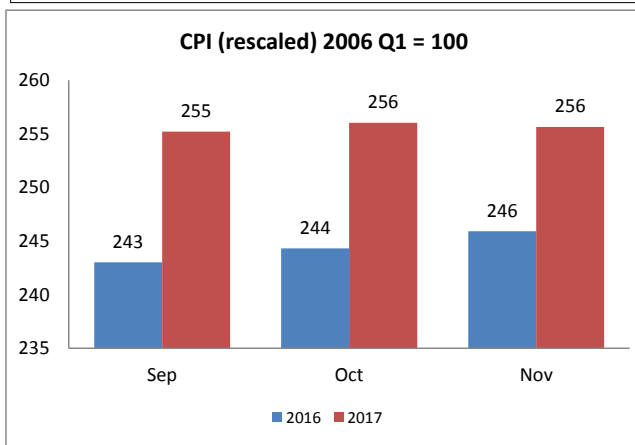
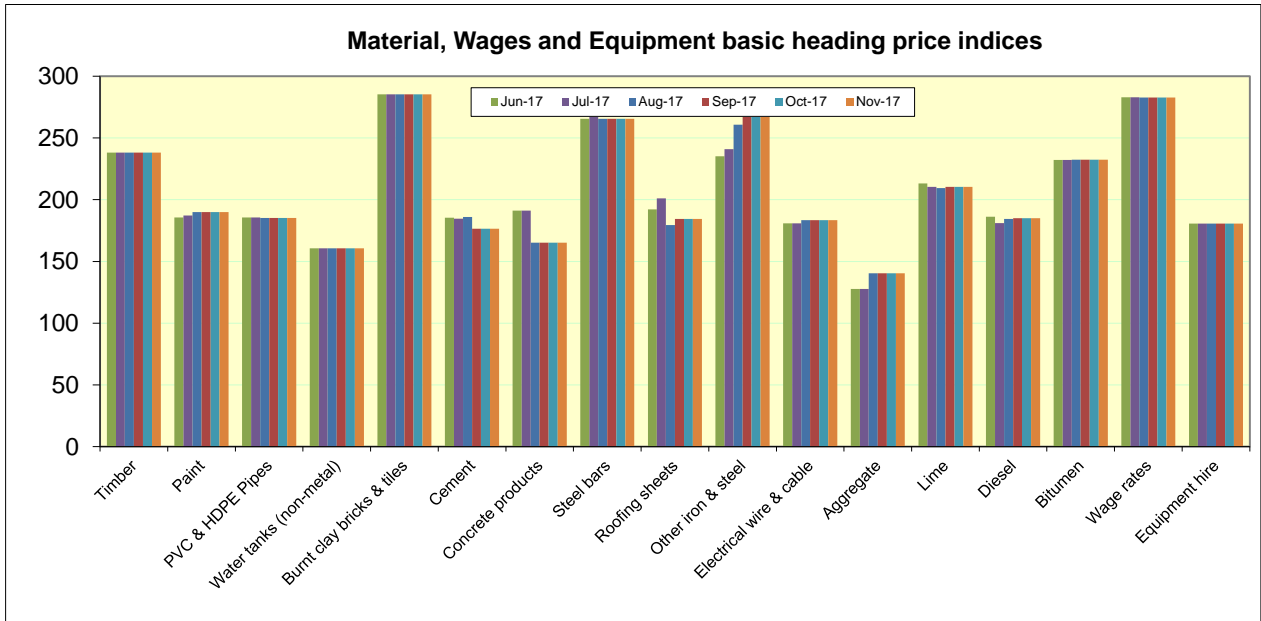
Basic heading price indices, CPI Rescaled and Equipment charge out rates and cement quantities

Jan-Mar 2006 = 100

	Electrical wire & cable		Aggregate		Lime		Diesel		Bitumen	
	2016	2017	2016	2017	2016	2017	2016	2017	2016	2017
Year	192.63		121.92		204.07		186.57		191.85	
Q1	214.96	181.89	121.35	128.63	202.14	213.51	184.14	206.09	200.10	179.60
Q2	197.81	181.65	121.35	129.00	200.02	214.21	175.90	216.63	196.60	186.94
Q3	178.69	179.57	121.35	108.71	205.74	211.63	191.79	213.29	190.97	186.84
Q4	179.06		123.60		208.37		194.46		179.72	
Jan	214.96	182.00	121.35	128.10	198.58	213.50	197.39	204.48	201.91	180.31
Feb	214.96	181.77	121.35	128.78	202.39	213.49	183.28	206.24	201.22	179.16
Mar	214.96	181.91	121.35	129.00	205.45	213.54	171.75	207.56	197.17	179.31
Apr	205.32	182.09	121.35	129.00	200.97	213.52	173.12	217.68	196.21	187.02
May	205.37	181.58	121.35	129.00	199.29	214.34	174.99	216.31	196.40	187.07
Jun	182.74	181.28	121.35	129.00	199.79	214.77	179.60	215.89	197.20	186.72
Jul	182.84	181.28	121.35	129.00	205.09	212.01	190.74	212.34	197.53	186.83
Aug	176.58	178.72	121.35	98.57	206.42	210.90	191.86	213.44	197.41	186.88
Sep	176.64	178.72	121.35	98.57	205.71	211.98	192.77	214.10	177.98	186.81
Oct	177.29	179.74	121.35	90.39	209.88	213.09	193.58	215.97	178.53	187.19
Nov	177.98	186.26	121.35	90.39	207.08	213.50	193.29	216.33	180.31	187.20
Dec	181.92		128.10		208.15		196.52		180.31	

	Labour wage rates		Equipment charge out rates		CPI (rescaled) 2006 Q1 = 100		Cement quantities	
	2016	2017	2016	2017	2016	2017	2016	2017
Year	330.70		278.98		240.82		2442.00	
Q1	325.40	331.05	278.90	279.15	236.82	250.87	594.23	625.02
Q2	336.27	332.45	278.90	279.18	238.92	254.19	602.26	588.50
Q3	331.00	332.61	278.97	279.21	241.16	253.48	636.24	637.42
Q4	330.15		279.14		246.38		609.27	
Jan	325.77	330.61	278.90	279.14	235.93	248.91	213.06	223.22
Feb	325.22	330.71	278.90	279.12	236.25	251.05	171.85	195.43
Mar	325.22	331.84	278.90	279.18	238.27	252.65	209.32	206.37
Apr	343.23	331.84	278.90	279.18	238.54	253.74	178.32	194.17
May	332.79	332.75	278.90	279.19	239.01	255.21	213.59	201.97
Jun	332.79	332.75	278.90	279.19	239.21	253.62	210.35	192.36
Jul	332.79	332.61	278.90	279.19	239.61	252.41	212.99	206.84
Aug	330.10	332.61	278.90	279.22	240.86	252.80	218.00	218.21
Sep	330.10	332.61	279.11	279.22	243.01	255.22	205.25	212.37
Oct	330.10	337.33	279.14	279.22	244.31	256.04	199.96	202.36
Nov	330.10	337.33	279.14	279.22	245.91	255.64	198.69	214.55
Dec	330.27		279.14		248.91		210.63	

Source: Uganda Bureau of Statistics



### Explanatory Notes on the Statistical Release

The data presented in this Statistical Release are indices designed to show price changes in each period. On page 1 there is a short commentary highlighting the main changes observed.

The graphs on page 1 are derived from Table A “Construction Sector Price Indices” on page 2 of the statistical release. The first graph shows the price changes for the whole sector for each month for the one year. The second graph shows the monthly average price indices in each month for the whole sector and the major sub-sectors.

The charts on page 5 above show the indices for the latest five months for each basic heading. The Consumer Price Index (CPI, rescaled) and the quantity of cement for the domestic market are also shown. (Rescaling means multiplying or dividing the original series by a constant factor so as to compare with the current trends in say CPI)

If the bars in the charts are at almost the same level, then they indicate very little (if any) change in prices. An increase in the height of the bars indicates an increase in the prices while a reduction in the height implies a decline in prices.