



UGANDA BUREAU OF STATISTICS

P.O. Box 7186, Kampala; Tel: 0414 – 706000; Fax: 0414 – 237553; Email: ubos@ubos.org; Website: www.ubos.org



PRESS RELEASE PRODUCER PRICE INDICES AND INFLATION MANUFACTURING AND UTILITIES – JANUARY 2025

1.0 Annual PPI M&U Headline Inflation

The Annual Headline Inflation as measured by the Producer Price Index of Manufacturing and Utilities for the 12 months to January 2025 was registered at 1.2 percent compared to 1.0 percent registered in the year ended December 2024, see Table 1 and Figure 1 below.

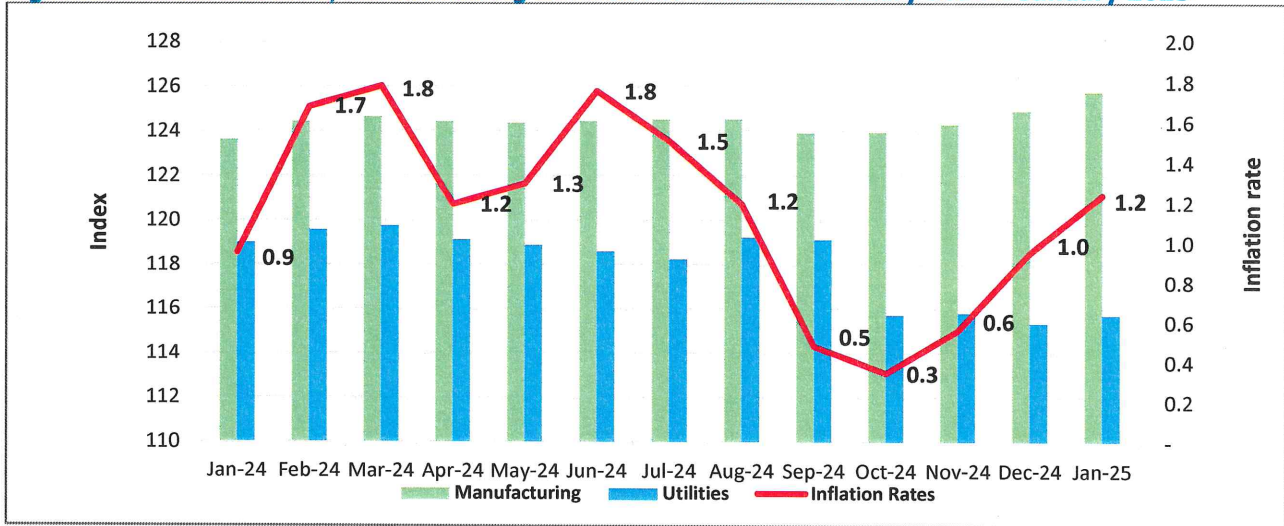
This was mainly attributed to the Annual Inflation for Manufacturing sector that registered 1.7 percent increase in the year ending January 2025 compared to 1.4 percent increase registered in the year ended December 2024. This increase was due to the inflation of Manufacture of Food Products that registered 3.6 percent in January 2025 compared to 2.9 percent registered in December 2024 as shown in Appendix Table 2.

The Annual Inflation for Utilities sector was registered at minus 2.8 percent in the year ending January 2025 compared to minus 2.9 percent registered in the year ended December 2024. The main driver to the Annual Inflation for Utilities sector was the inflation of Electric Power Generation which registered minus 6.9 percent in the year ending January 2025 compared to minus 7.2 percent registered in the year ended December 2024 see Table 1 below and Appendix Table 2.

Table 1: PPI M&U Annual Headline Inflation for December 2024 and January 2025

| Description | Weights | December 2024 | January 2025 |
|---------------|----------|---------------|--------------|
| Headline | 1,000.00 | 1.0 | 1.2 |
| Manufacturing | 886.44 | 1.4 | 1.7 |
| Utilities | 113.56 | -2.9 | -2.8 |

Figure 1: Annual Headline, Manufacturing and Utilities Inflation: January 2024 – January 2025



The overall Annual Producer Price Indices for the 12 months to January 2025 are shown in Table 2 below.

Table 2: Overall PPI-M&U Indices and Annual Inflation Rates for January 2024-January 2025

| Month | Overall PPI-M&U | PPI-M&U Inflation |
|----------------|-----------------|-------------------|
| January-2025 | 124.65 | 1.2 |
| December-2024 | 123.85 | 1.0 |
| November-2024 | 123.37 | 0.6 |
| October-2024 | 123.04 | 0.3 |
| September-2024 | 123.40 | 0.5 |
| August-2024 | 123.97 | 1.2 |
| July-2024 | 123.86 | 1.5 |
| June-2024 | 123.84 | 1.8 |
| May-2024 | 123.78 | 1.3 |
| April-2024 | 123.87 | 1.2 |
| March-2024 | 124.13 | 1.8 |
| February-2024 | 123.93 | 1.7 |
| January-2024 | 123.12 | 0.9 |

Vincent F. Sennono (PhD)

For: **EXECUTIVE DIRECTOR/CHIEF STATISTICIAN**

28/02/2025

2.0 PPI M&U Monthly Inflation

The PPI M&U Monthly Headline Inflation for January 2025 increased by 0.6 percent from the 0.4 percent registered for the month of December 2024 as shown in Table 2 below.

This was mainly attributed to the monthly inflation for Manufacturing sector which increased by 0.7 percent in January 2025 from 0.5 percent registered in December 2024. The main driver for the monthly Manufacturing inflation was the inflation of Manufacture of Food Products which increased by 1.4 percent in January 2025 compared to 1.2 percent registered in December 2024 as shown in Appendix Table 3. Specifically, prices for the Manufacture of vegetable and animal oils and fats increased by 6.0% compared to 0.8% percent drop registered in December 2024. Similarly, Prices for the Processing and preserving of fish increased by 9.0% compared to 1.0% percent drop registered in December 2024.

However, prices for Processing and preserving of meat decreased by 1.2 percent in January 2025 compared to 3.9% percent increase registered in December 2024. Similarly, prices for Manufacture of sugar decreased by 1.2 percent in January 2025 compared to 5.6% percent rise in December 2024.

The monthly inflation for Utilities sector increased by 0.3 percent in January 2025 from 0.4 percent drop registered in December 2024. This was mainly due to the monthly inflation for Electric Power Generation that increased by 0.7 percent in January 2025 from the 0.8 percent drop recorded in December 2024. See Appendix Table 3.

The overall Monthly Producer Price Indices for the 12 months to January 2025 are shown in Table 2 below

Table 2: Overall PPI-M&U Indices and Monthly Inflation Rates for January 2024-January 2025

| Month | Overall PPI-M&U | PPI-M&U Inflation |
|----------------|-----------------|-------------------|
| January-2025 | 124.65 | 0.6 |
| December-2024 | 123.85 | 0.4 |
| November-2024 | 123.37 | 0.3 |
| October-2024 | 123.04 | -0.3 |
| September-2024 | 123.40 | -0.5 |
| August-2024 | 123.97 | 0.1 |
| July-2024 | 123.86 | 0.0 |
| June-2024 | 123.84 | 0.0 |
| May-2024 | 123.78 | -0.1 |
| April-2024 | 123.87 | -0.2 |
| March-2024 | 124.13 | 0.2 |
| February-2024 | 123.93 | 0.7 |
| January-2024 | 123.12 | 0.4 |



APPENDIX

Appendix 1: PRODUCER PRICE INDEX - MANUFACTURING AND UTILITIES INDEX: January 2024-January 2025 (Base Period 2016/17=100)

| Activity | Weight | Jan-2024 | Feb-2024 | Mar-2024 | Apr-2024 | May-2024 | Jun-2024 | Jul-2024 | Aug-2024 | Sep-2024 | Oct-2024 | Nov-2024 | Dec-2024 | Jan-2025 |
|--|-----------------|---------------|---------------|---------------|---------------|---------------|---------------|---------------|---------------|---------------|---------------|---------------|---------------|---------------|
| Manufacturing & Utilities | 1,000.00 | 123.12 | 123.93 | 124.13 | 123.87 | 123.78 | 123.84 | 123.86 | 123.97 | 123.40 | 123.04 | 123.37 | 123.85 | 124.65 |
| Manufacturing | 886.44 | 123.65 | 124.49 | 124.69 | 124.47 | 124.41 | 124.50 | 124.57 | 124.57 | 123.95 | 123.97 | 124.33 | 124.93 | 125.79 |
| Utilities | 113.56 | 119.03 | 119.60 | 119.78 | 119.17 | 118.91 | 118.64 | 118.29 | 119.27 | 119.16 | 115.75 | 115.84 | 115.37 | 115.75 |
| C Manufacturing | 886.44 | 123.65 | 124.49 | 124.69 | 124.47 | 124.41 | 124.50 | 124.57 | 124.57 | 123.95 | 123.97 | 124.33 | 124.93 | 125.79 |
| 10 Food Products | 358.36 | 131.07 | 131.85 | 131.68 | 130.93 | 130.97 | 131.37 | 131.83 | 131.99 | 131.16 | 131.35 | 132.35 | 133.90 | 135.76 |
| 11 Beverages | 74.23 | 111.90 | 113.01 | 112.58 | 113.24 | 112.47 | 112.47 | 112.32 | 113.21 | 112.35 | 112.35 | 112.35 | 113.00 | 112.86 |
| 12 Tobacco Products | 9.40 | 105.31 | 105.94 | 106.14 | 105.48 | 105.19 | 104.78 | 104.39 | 104.56 | 104.44 | 104.03 | 104.13 | 104.00 | 104.23 |
| 13 Textiles | 22.00 | 121.09 | 121.09 | 121.09 | 121.09 | 123.00 | 123.96 | 123.96 | 123.96 | 123.96 | 123.96 | 123.96 | 123.96 | 123.96 |
| 14 Wearing Apparel | 17.78 | 123.46 | 123.46 | 122.90 | 122.90 | 122.90 | 122.90 | 122.90 | 123.19 | 122.90 | 122.90 | 122.90 | 122.90 | 122.90 |
| 15 Leather & Related Products | 15.14 | 109.94 | 109.94 | 109.94 | 109.94 | 109.94 | 109.94 | 109.94 | 109.94 | 109.94 | 109.94 | 109.94 | 109.94 | 109.94 |
| 16 Wood And Products Of Wood, Cork, Except Furniture | 2.63 | 104.71 | 104.82 | 104.86 | 104.74 | 104.69 | 102.94 | 102.88 | 102.91 | 101.37 | 99.74 | 99.39 | 98.58 | 98.07 |
| 17 Paper And Paper Products | 13.19 | 121.45 | 121.91 | 121.84 | 121.36 | 121.29 | 121.19 | 121.10 | 121.14 | 122.92 | 122.82 | 122.84 | 122.35 | 122.30 |
| 18 Printing | 12.45 | 106.55 | 106.63 | 109.08 | 109.08 | 109.08 | 108.76 | 108.76 | 108.76 | 108.76 | 108.76 | 108.76 | 108.76 | 108.76 |
| 20 Chemicals And Chemical Products | 36.49 | 138.62 | 137.86 | 137.94 | 138.07 | 138.31 | 138.31 | 138.31 | 138.31 | 136.75 | 136.93 | 136.93 | 136.93 | 137.65 |
| 21 Pharmaceuticals, Medicinal Chemical And Botanical Products | 73.68 | 115.86 | 116.31 | 117.10 | 116.61 | 116.40 | 116.10 | 115.41 | 113.85 | 113.53 | 113.23 | 112.96 | 111.47 | 111.63 |
| 22 Rubber And Plastics Products | 26.98 | 109.18 | 107.60 | 107.60 | 107.62 | 107.62 | 107.65 | 107.65 | 107.65 | 107.61 | 107.61 | 107.65 | 107.73 | 107.80 |
| 23 Non-Metallic Mineral Products | 50.59 | 102.39 | 102.39 | 103.07 | 105.39 | 105.39 | 105.40 | 105.40 | 105.40 | 104.66 | 104.66 | 104.66 | 104.67 | 104.67 |
| 24 Basic Metals | 46.93 | 128.99 | 129.54 | 130.27 | 129.04 | 128.37 | 127.84 | 127.46 | 127.63 | 126.69 | 126.67 | 126.73 | 126.04 | 125.92 |
| 25 Fabricated Metal Products | 31.27 | 125.69 | 126.74 | 127.54 | 128.84 | 128.35 | 127.64 | 126.99 | 125.74 | 125.55 | 124.86 | 124.02 | 123.79 | 124.18 |
| 27 Electrical Equipment | 3.75 | 110.78 | 111.08 | 111.10 | 111.05 | 111.03 | 111.73 | 111.70 | 111.71 | 110.44 | 110.42 | 110.42 | 110.41 | 110.92 |
| 31 Furniture | 91.58 | 125.52 | 129.28 | 130.31 | 130.02 | 130.02 | 130.02 | 130.02 | 130.20 | 129.86 | 129.86 | 129.86 | 130.85 | 131.46 |
| D&E Utilities | 113.56 | 119.03 | 119.60 | 119.78 | 119.17 | 118.91 | 118.64 | 118.29 | 119.27 | 119.16 | 115.75 | 115.84 | 115.37 | 115.75 |
| 35 Electricity Generation | 52.07 | 130.32 | 131.56 | 131.97 | 130.64 | 130.07 | 129.47 | 128.70 | 129.03 | 128.80 | 121.37 | 121.56 | 120.54 | 121.36 |
| 36 Water Supply; Sewerage & Waste Management | 54.54 | 110.67 | 110.67 | 110.67 | 110.67 | 110.67 | 110.67 | 110.67 | 112.40 | 112.40 | 112.40 | 112.40 | 112.40 | 112.40 |
| 37 Sewerage | 0.28 | 99.40 | 99.40 | 99.40 | 99.40 | 99.40 | 99.40 | 99.40 | 99.40 | 99.40 | 99.40 | 99.40 | 99.40 | 99.40 |
| 38 Waste Collection, Treatment And Disposal Activities; Materials Recovery | 6.66 | 100.01 | 100.01 | 100.01 | 100.01 | 100.01 | 100.01 | 100.01 | 100.01 | 100.01 | 100.01 | 100.01 | 100.01 | 100.01 |

Appendix 2: PPI M&U Annual Inflation rates by ISIC Divisions : January 2024-January 2025 (Base Period 2016/17=100)

| Activity | Weight | Jan-2024 | Feb-2024 | Mar-2024 | Apr-2024 | May-2024 | Jun-2024 | Jul-2024 | Aug-2024 | Sep-2024 | Oct-2024 | Nov-2024 | Dec-2024 | Jan-2025 |
|--|-----------------|------------|------------|------------|------------|------------|------------|------------|------------|------------|-------------|-------------|-------------|-------------|
| Manufacturing & Utilities | 1,000.00 | 0.9 | 1.7 | 1.8 | 1.2 | 1.3 | 1.8 | 1.5 | 1.2 | 0.5 | 0.3 | 0.6 | 1.0 | 1.2 |
| Manufacturing | 886.44 | 0.2 | 1.0 | 1.1 | 0.6 | 0.7 | 1.3 | 1.4 | 1.0 | 0.3 | 0.6 | 0.8 | 1.4 | 1.7 |
| Utilities | 113.56 | 7.2 | 7.7 | 7.4 | 6.3 | 6.2 | 6.1 | 2.6 | 2.9 | 2.1 | -1.3 | -1.4 | -2.9 | -2.8 |
| C Manufacturing | 886.44 | 0.2 | 1.0 | 1.1 | 0.6 | 0.7 | 1.3 | 1.4 | 1.0 | 0.3 | 0.6 | 0.8 | 1.4 | 1.7 |
| 10 Food Products | 358.36 | -0.2 | 0.7 | 0.8 | -0.5 | 0.2 | 0.8 | 1.0 | 0.5 | -0.3 | 0.4 | 1.4 | 2.9 | 3.6 |
| 11 Beverages | 74.23 | 2.2 | 2.7 | 2.3 | 2.6 | 1.8 | 1.9 | 1.6 | 1.2 | 0.1 | 0.0 | 0.4 | 1.0 | 0.9 |
| 12 Tobacco Products | 9.40 | 1.0 | 1.7 | 1.3 | 0.7 | 0.5 | 0.4 | 0.4 | 0.3 | -0.2 | -0.8 | -0.9 | -1.0 | -1.0 |
| 13 Textiles | 22.00 | 0.5 | 0.5 | 0.5 | 0.5 | 1.9 | 2.6 | 2.6 | 2.6 | 2.6 | 2.6 | 2.6 | 2.6 | 2.4 |
| 14 Wearing Apparel | 17.78 | -0.5 | 0.1 | -0.4 | -0.4 | -0.4 | -0.5 | -0.5 | -0.2 | -0.5 | -0.5 | -0.5 | -0.5 | -0.5 |
| 15 Leather & Related Products | 15.14 | 1.1 | 1.1 | 1.1 | 1.1 | 1.1 | 1.1 | -1.3 | 0.0 | 0.0 | 0.0 | 0.0 | 0.0 | 0.0 |
| 16 Wood And Products Of Wood, Cork, Except Furniture | 2.63 | 5.4 | 5.5 | 5.5 | 2.6 | 2.6 | 0.9 | 0.9 | 0.9 | -0.7 | -3.6 | -4.0 | -4.7 | -6.3 |
| 17 Paper And Paper Products | 13.19 | -0.7 | -0.3 | -0.4 | -0.8 | -0.6 | -0.7 | -0.7 | -0.7 | 0.6 | 0.7 | 0.7 | 0.3 | 0.7 |
| 18 Printing | 12.45 | 5.4 | 3.2 | 5.6 | 5.0 | 5.0 | 4.7 | 4.5 | 4.5 | 4.5 | 4.5 | 4.5 | 4.5 | 2.1 |
| 20 Chemicals And Chemical Products | 36.49 | -1.5 | -2.6 | -2.5 | -2.3 | -2.4 | -1.5 | -1.4 | -1.4 | -2.5 | -2.4 | -2.4 | -2.4 | -0.7 |
| 21 Pharmaceuticals, Medicinal Chemical And Botanical Products | 73.68 | -3.7 | -3.1 | -2.6 | -3.1 | -2.3 | -1.2 | 0.6 | -0.9 | -1.5 | -1.8 | -2.2 | -3.5 | -3.6 |
| 22 Rubber And Plastics Products | 26.98 | -2.4 | -3.8 | -2.9 | -2.9 | -2.9 | -1.9 | -2.0 | -2.0 | -1.9 | -1.6 | -1.5 | -1.4 | -1.3 |
| 23 Non-Metallic Mineral Products | 50.59 | 3.3 | 3.3 | 4.0 | 6.4 | 3.0 | 3.0 | 2.9 | 2.9 | 2.2 | 2.2 | 2.2 | 2.2 | 2.2 |
| 24 Basic Metals | 46.93 | -1.6 | -0.8 | -0.5 | -1.5 | -1.6 | -0.3 | 0.3 | 0.1 | -1.0 | -0.7 | -0.8 | -1.1 | -2.4 |
| 25 Fabricated Metal Products | 31.27 | 1.2 | 1.5 | 1.4 | 2.4 | 2.2 | 1.9 | 2.0 | 0.7 | -0.1 | -0.3 | -1.1 | -1.2 | -1.2 |
| 27 Electrical Equipment | 3.75 | -1.2 | -1.0 | -1.0 | -1.0 | -1.0 | 0.9 | 0.9 | 0.9 | -0.3 | -0.3 | -0.3 | -0.3 | 0.1 |
| 31 Furniture | 91.58 | 4.0 | 6.9 | 6.9 | 6.7 | 6.4 | 6.3 | 5.8 | 5.9 | 5.4 | 4.9 | 3.6 | 4.3 | 4.7 |
| D&E Utilities | 113.56 | 7.2 | 7.7 | 7.4 | 6.3 | 6.2 | 6.1 | 2.6 | 2.9 | 2.1 | -1.3 | -1.4 | -2.9 | -2.8 |
| 35 Electricity Generation | 52.07 | 5.1 | 6.2 | 5.6 | 3.4 | 3.2 | 3.0 | 3.1 | 2.9 | 2.0 | -4.1 | -4.3 | -7.2 | -6.9 |
| 36 Water Supply; Sewerage & Waste Management | 54.54 | 10.5 | 10.5 | 10.5 | 10.5 | 10.5 | 10.5 | 2.4 | 3.2 | 2.4 | 1.6 | 1.6 | 1.6 | 1.6 |
| 37 Sewerage | 0.28 | 0.0 | 0.0 | 0.0 | 0.0 | 0.0 | 0.0 | 0.0 | 0.0 | 0.0 | 0.0 | 0.0 | 0.0 | 0.0 |
| 38 Waste Collection, Treatment And Disposal Activities; Materials Recovery | 6.66 | 0.0 | 0.0 | 0.0 | 0.0 | 0.0 | 0.0 | 0.0 | 0.0 | 0.0 | 0.0 | 0.0 | 0.0 | 0.0 |

Appendix 3: PPI M&U Monthly Inflation Rates by ISIC Divisions: January 2024-January 2025 (Base Period 2016/17=100)

| Activity | Weight | Jan-2024 | Feb-2024 | Mar-2024 | Apr-2024 | May-2024 | Jun-2024 | Jul-2024 | Aug-2024 | Sep-2024 | Oct-2024 | Nov-2024 | Dec-2024 | Jan-2025 |
|--|-----------------|------------|------------|------------|-------------|-------------|-------------|-------------|------------|-------------|-------------|------------|-------------|------------|
| Manufacturing & Utilities | 1,000.00 | 0.4 | 0.7 | 0.2 | -0.2 | -0.1 | 0.0 | 0.0 | 0.1 | -0.5 | -0.3 | 0.3 | 0.4 | 0.6 |
| Manufacturing | 886.44 | 0.4 | 0.7 | 0.2 | -0.2 | -0.1 | 0.1 | 0.1 | 0.0 | -0.5 | 0.0 | 0.3 | 0.5 | 0.7 |
| Utilities | 113.56 | 0.2 | 0.5 | 0.2 | -0.5 | -0.2 | -0.2 | -0.3 | 0.8 | -0.1 | -2.9 | 0.1 | -0.4 | 0.3 |
| C Manufacturing | 886.44 | 0.4 | 0.7 | 0.2 | -0.2 | -0.1 | 0.1 | 0.1 | 0.0 | -0.5 | 0.0 | 0.3 | 0.5 | 0.7 |
| 10 Food Products | 358.36 | 0.7 | 0.6 | -0.1 | -0.6 | 0.0 | 0.3 | 0.3 | 0.1 | -0.6 | 0.1 | 0.8 | 1.2 | 1.4 |
| 11 Beverages | 74.23 | 0.0 | 1.0 | -0.4 | 0.6 | -0.7 | 0.0 | -0.1 | 0.8 | -0.8 | 0.0 | 0.0 | 0.6 | -0.1 |
| 12 Tobacco Products | 9.40 | 0.2 | 0.6 | 0.2 | -0.6 | -0.3 | -0.4 | -0.4 | 0.2 | -0.1 | -0.4 | 0.1 | -0.1 | 0.2 |
| 13 Textiles | 22.00 | 0.3 | 0.0 | 0.0 | 0.0 | 1.6 | 0.8 | 0.0 | 0.0 | 0.0 | 0.0 | 0.0 | 0.0 | 0.0 |
| 14 Wearing Apparel | 17.78 | 0.0 | 0.0 | -0.5 | 0.0 | 0.0 | 0.0 | 0.0 | 0.2 | -0.2 | 0.0 | 0.0 | 0.0 | 0.0 |
| 15 Leather & Related Products | 15.14 | 0.0 | 0.0 | 0.0 | 0.0 | 0.0 | 0.0 | 0.0 | 0.0 | 0.0 | 0.0 | 0.0 | 0.0 | 0.0 |
| 16 Wood And Products Of Wood, Cork, Except Furniture | 2.63 | 1.2 | 0.1 | 0.0 | -0.1 | 0.0 | -1.7 | -0.1 | 0.0 | -1.5 | -1.6 | -0.3 | -0.8 | -0.5 |
| 17 Paper And Paper Products | 13.19 | -0.5 | 0.4 | -0.1 | -0.4 | -0.1 | -0.1 | -0.1 | 0.0 | 1.5 | -0.1 | 0.0 | -0.4 | 0.0 |
| 18 Printing | 12.45 | 2.3 | 0.1 | 2.3 | 0.0 | 0.0 | -0.3 | 0.0 | 0.0 | 0.0 | 0.0 | 0.0 | 0.0 | 0.0 |
| 20 Chemicals And Chemical Products | 36.49 | -1.2 | -0.6 | 0.1 | 0.1 | 0.2 | 0.0 | 0.0 | 0.0 | -1.1 | 0.1 | 0.0 | 0.0 | 0.5 |
| 21 Pharmaceuticals, Medicinal Chemical And Botanical Products | 73.68 | 0.3 | 0.4 | 0.7 | -0.4 | -0.2 | -0.3 | -0.6 | -1.4 | -0.3 | -0.3 | -0.2 | -1.3 | 0.1 |
| 22 Rubber And Plastics Products | 26.98 | -0.1 | -1.4 | 0.0 | 0.0 | 0.0 | 0.0 | 0.0 | 0.0 | 0.0 | 0.0 | 0.0 | 0.1 | 0.1 |
| 23 Non-Metallic Mineral Products | 50.59 | 0.0 | 0.0 | 0.7 | 2.3 | 0.0 | 0.0 | 0.0 | 0.0 | -0.7 | 0.0 | 0.0 | 0.0 | 0.0 |
| 24 Basic Metals | 46.93 | 1.2 | 0.4 | 0.6 | -0.9 | -0.5 | -0.4 | -0.3 | 0.1 | -0.7 | 0.0 | 0.0 | -0.5 | -0.1 |
| 25 Fabricated Metal Products | 31.27 | 0.3 | 0.8 | 0.6 | 1.0 | -0.4 | -0.5 | -0.5 | -1.0 | -0.2 | -0.5 | -0.7 | -0.2 | 0.3 |
| 27 Electrical Equipment | 3.75 | 0.0 | 0.3 | 0.0 | 0.0 | 0.0 | 0.6 | 0.0 | 0.0 | -1.1 | 0.0 | 0.0 | 0.0 | 0.5 |
| 31 Furniture | 91.58 | 0.0 | 3.0 | 0.8 | -0.2 | 0.0 | 0.0 | 0.0 | 0.1 | -0.3 | 0.0 | 0.0 | 0.8 | 0.5 |
| D&E Utilities | 113.56 | 0.2 | 0.5 | 0.2 | -0.5 | -0.2 | -0.2 | -0.3 | 0.8 | -0.1 | -2.9 | 0.1 | -0.4 | 0.3 |
| 35 Electricity Generation | 52.07 | 0.3 | 1.0 | 0.3 | -1.0 | -0.4 | -0.5 | -0.6 | 0.3 | -0.2 | -5.8 | 0.2 | -0.8 | 0.7 |
| 36 Water Supply; Sewerage & Waste Management | 54.54 | 0.0 | 0.0 | 0.0 | 0.0 | 0.0 | 0.0 | 0.0 | 1.6 | 0.0 | 0.0 | 0.0 | 0.0 | 0.0 |
| 37 Sewerage | 0.28 | 0.0 | 0.0 | 0.0 | 0.0 | 0.0 | 0.0 | 0.0 | 0.0 | 0.0 | 0.0 | 0.0 | 0.0 | 0.0 |
| 38 Waste Collection, Treatment And Disposal Activities; Materials Recovery | 6.66 | 0.0 | 0.0 | 0.0 | 0.0 | 0.0 | 0.0 | 0.0 | 0.0 | 0.0 | 0.0 | 0.0 | 0.0 | 0.0 |