



UGANDA BUREAU OF STATISTICS

P.O. Box 7186, Kampala: Tel: 0414 – 706000: Fax: 0414 – 237553: Email: ubos@ubos.org: Website:



PRESS RELEASE

PRODUCER PRICE INDICES AND INFLATION RATES

MANUFACTURING AND UTILITIES - MARCH 2022

1.0 Annual Headline Inflation

The Inflation as measured by the Producer Price Index for Manufactured Goods and Utilities for the 12 months to March 2022 increased to 12.8 percent, up from 12.0 percent registered in February 2022, Table 1. This was attributed to an increase to 13.6 percent in Inflation of the Manufacturing Sector in March 2022, up from 12.8 percent registered in February 2022, Figure 1.

The main drivers in the Manufacturing sector were Manufacture of Chemicals & Chemical Products whose Inflation increased to 63.4 percent in March 2022 compared to 43.7 percent in February 2022, Manufacture of Other Non-Metallic Mineral Products Inflation increased to 8.0 percent in March 2022 compared to 5.8 percent registered in February 2022 and Manufacture of Leather & Related Products to 29.0 percent in March 2022 compared to 26.6 percent in February 2022, Figure 1 and Table 2. Particularly, Inflation of Soap, Detergents, Cleaning and Polishing increased to 73.7 percent in March 2022 up from 52.4 percent registered in February 2022 and Manufacture of Cement, Lime and Plaster increased to 10.0 percent in March 2022 compared to 2.4 percent registered in February 2022.

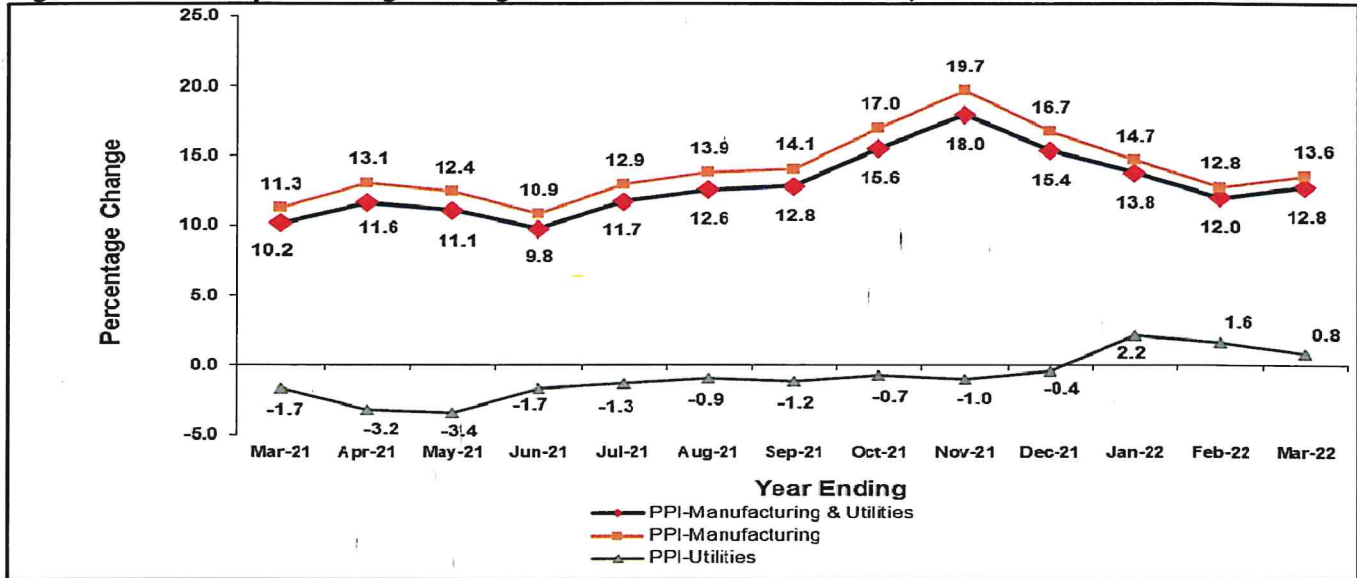
In addition, the Inflation for Utilities increased to 0.8 percent in March 2022, a slower rate compared to 1.6 percent registered in February 2022. This was attributed to 1.0 percent slow down in the Inflation of Electricity Power Generation in March 2022 compared to 2.0 percent registered in February 2022, Figure 1.

Table 1: Overall PPI-Manufacturing & Utilities and Rates of Inflation (Base: 2009/10=100)

Month	Overall Index (PPI-M&U)	Inflation rate
March 2022	230.22	12.8
February 2022	221.99	12.0
January 2022	218.17	13.8
December 2021	214.64	15.4
November 2021	215.05	18.0
October 2021	212.36	15.6
September 2021	206.74	12.8
August 2021	203.92	12.6
July 2021	203.20	11.7
June 2021	198.90	9.8
May 2021	203.33	11.1
April 2021	205.23	11.6
March 2021	204.13	10.2


Chris N. Mukiza (PhD)
EXECUTIVE DIRECTOR

Figure 1: Annual percentage changes in Producer Price Indices, March 2021 – March 2022

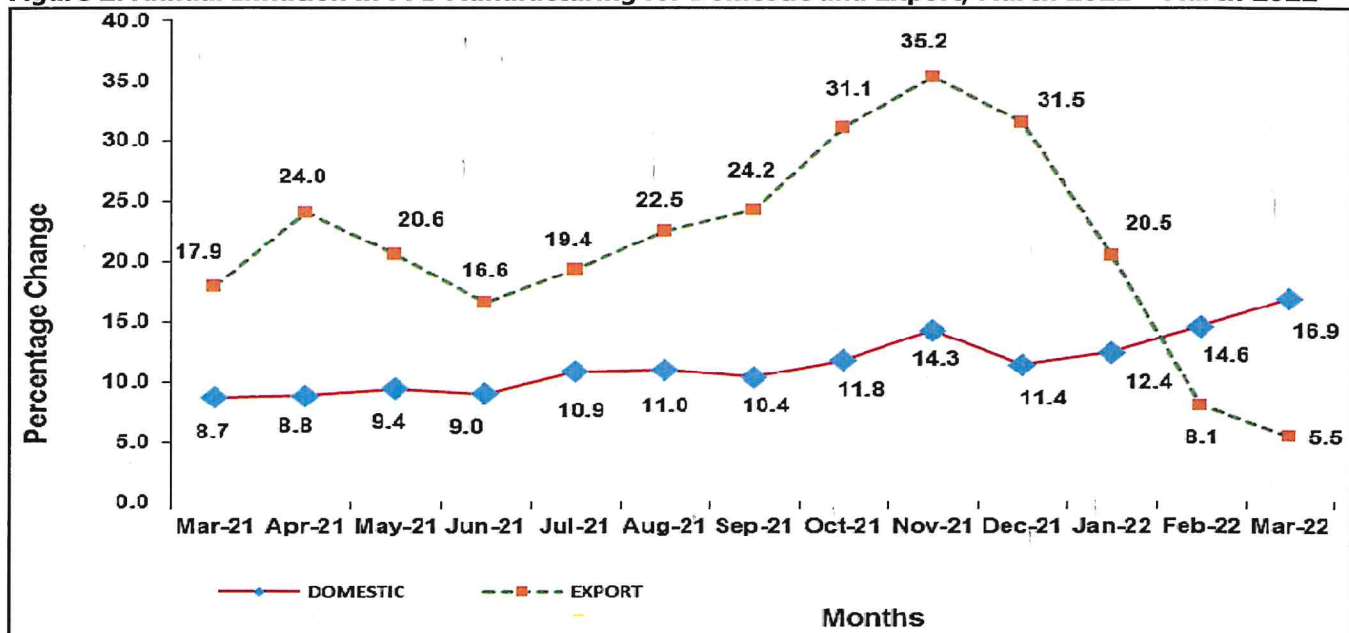


The Producer Price Index for Manufactured goods is further disaggregated into goods produced for the Local market (Domestic) and for Export. For the Domestic Market, the Inflation as measured by the Producer Price Index for the 12 months to March 2022 increased to 16.9 percent, up from 14.6 percent registered in February 2022. This was attributed to 59.9 percent increase in Inflation for Chemicals & Chemical Products in March 2022 compared to 42.9 percent in February 2022, Manufacture of Food Products at 20.5 percent registered in March 2022 compared to 20.6 percent in February 2022 and Manufacture of Other Non-Metallic Mineral Products registered at 7.3 percent in March 2022 compared to 5.9 percent registered in February 2022, Figure 2.

However, the Inflation for Exported Manufactured Products is 5.5 percent for the 12 months to March 2022, a slower rate compared to 8.1 percent registered in February 2022, Figure 2.

The main driver was Manufacture of Food Products Inflation registered at 2.6 percent in March 2022 compared to 7.2 percent registered in February, Figure 2.

Figure 2: Annual Inflation in PPI-Manufacturing for Domestic and Export, March 2021 – March 2022



2.0 Monthly Inflation

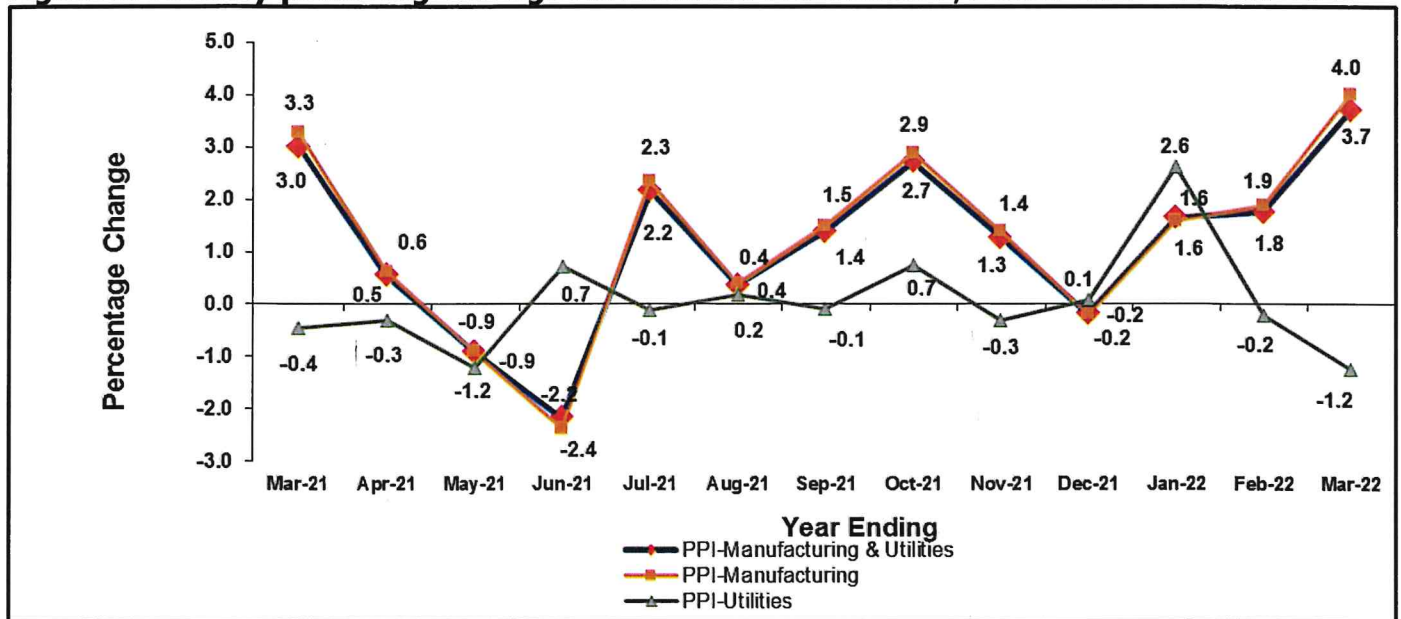
The Monthly Inflation for Manufactured Goods and Utilities rose by 3.7 percent in March 2022 compared to 1.8 percent rise registered in February 2022, Figure 3. This was attributed to 4.0 percent rise in the commodities under the Manufacturing sector in March 2022. Particularly, Inflation of commodities under Manufacture of Chemicals & Chemical Products which rose by 16.3 percent in March 2022 compared to 6.2 percent registered in February 2022, Manufacture of Food Products rose by 3.1 percent in March 2022 compared to 1.7 percent rise registered in February 2022 and Manufacture of Other Non-Metallic Mineral Products rose by 2.1 percent in March 2022 compared to 5.0 percent rise registered in February 2022, Table 2. Specifically, Inflation of Manufacture of Soap, Detergents, Cleaning and Polishing Preparations rose by 17.3 percent in March 2022 compared to 6.8 percent registered in February 2022, Manufacture of Vegetable and Animal Oils and Fats rose by 5.7 percent in March 2022 compared to 0.7 percent registered in February 2022 and Manufacture of Cement, Lime and Plaster rose by 7.5 percent in March compared to a drop of 0.1 registered in February 2022.

Table 2: Monthly and Annual Changes in the Producer Price Indices in March 2022

18 ISIC Divisions	Weight	Monthly % Change March 2022/Feb 2022	Annual % Change March 2022/March 2021
MANUFACTURE OF FOOD PRODUCTS	364.96	3.1	12.1
MANUFACTURE OF BEVERAGES	77.51	0.7	1.0
MANUFACTURE OF TOBACCO PRODUCTS	25.34	1.3	-1.9
MANUFACTURE OF TEXTILES	19.23	0.0	5.1
MANUFACTURE OF WEARING APPAREL	55.24	0.0	1.6
MANUFACTURE OF LEATHER & RELATED PRODUCTS	15.92	1.7	29.0
MANUFACTURE OF WOOD AND PRODUCTS OF WOOD, CORK, EXCEPT FURNITURE	7.32	0.1	-0.1
MANUFACTURE OF PAPER & PAPER PRODUCTS	15.86	-5.7	-5.2
PRINTING AND REPRODUCTION OF RECORDED MEDIA	25.33	-0.3	-0.7
MANUFACTURE OF CHEMICALS & CHEMICAL PRODUCTS	72.49	16.3	63.4
MANUFACTURE OF PHARMACEUTICALS, MEDICINAL CHEMICAL & BOTANICAL PRODUCTS	23.74	0.7	-2.8
MANUFACTURE OF RUBBER & PLASTIC PRODUCTS	26.45	0.6	1.9
MANUFACTURE OF OTHER NON-METALLIC MINERAL PRODUCTS	137.55	2.1	8.0
MANUFACTURE OF BASIC METALS	14.53	3.8	4.7
MANUFACTURE OF FABRICATED METAL PRODUCTS, EXCEPT MACHINERY AND EQUIPMENT	10.83	3.0	3.2
MANUFACTURE OF ELECTRICAL EQUIPMENT	15.24	0.0	6.8
MANUFACTURE OF FURNITURE	13.87	0.0	1.9
UTILITIES	78.60	-1.2	0.8
Overall	1,000.00	3.7	12.8

However, the Inflation for Utilities registered a drop of 1.2 percent in March 2022 compared to 0.2 percent drop registered in February 2022, Table 2 and Figure 2. This was attributed to Electricity Power Generation Inflation that registered a drop of 1.5 percent in March 2022 compared to 0.3 percent drop registered in February 2022.

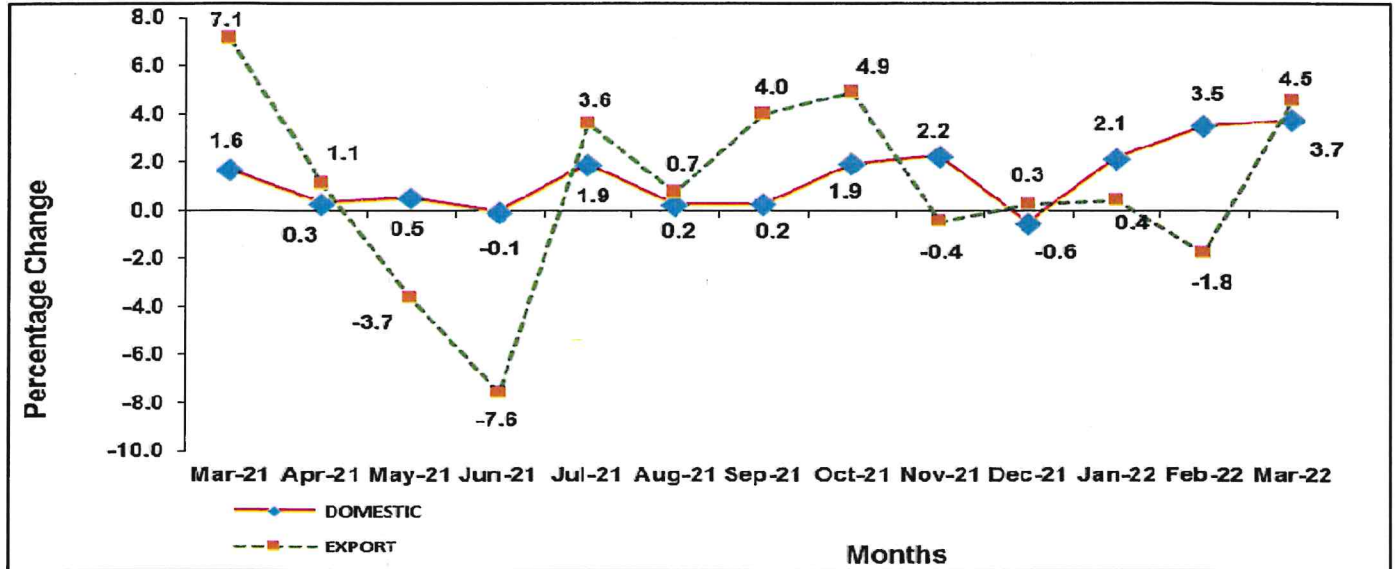
Figure 3: Monthly percentage changes in Producer Price Indices, March 2021 – March 2022



The Monthly Inflation for Exported Manufactured Products rose by 4.5 percent in March 2022 compared to 1.8 percent drop registered in February 2022, Figure 4. This was mainly attributed to the increase in Inflation of commodities under Manufacture of Food Products that rose by 3.6 percent in March 2022 compared to a drop of 2.0 registered in February 2022, Manufacture of Other Non-Metallic Mineral Products that rose by 11.8 percent in March 2022 compared to a drop of 0.4 percent registered in February 2022 and Manufacture of Chemicals & Chemical Products that rose by 31.1 percent in March 2022 compared to a drop of 0.4 percent registered in February 2022.

In addition, the Monthly Inflation for goods produced for domestic market rose by 3.7 percent in March 2022 compared to 3.5 percent rise registered in February 2022, Figure 4. This was mainly attributed to a rise in Inflation of Manufacture of Chemicals & Chemical Products by 14.1 percent in March compared to 7.2 percent rise registered in February 2022, Manufacture of Food Products by 2.7 percent in March 2022 compared to 4.8 percent rise registered in February 2022, Manufacture of Paper & Paper Products that rose by 13.7 percent in March 2022 compared to a drop of 7.9 registered in February 2022 and Other Non-Metallic Mineral Products that rose by 1.3 percent in March 2022 compared to 5.5 percent rise registered in February 2022.

Figure 4: Monthly changes in PPI-Manufacturing for Domestic and Export, March 2021 – March 2022



	Feb-21	Mar-21	Apr-21	May-21	Jun-21	Jul-21	Aug-21	Sep-21	Oct-21	Nov-21	Dec-21	Jan-22	Feb-22	Mar-22
Local	186.18	189.25	189.8	190.66	190.5	194.1	194.48	194.94	198.6	203.05	201.91	206.2	213.37	221.3
Export	243.25	260.55	263.5	253.79	234.6	243	244.74	254.45	267	265.79	266.48	267.6	262.86	274.76
Monthly Inflation														
Local		1.6%	0.3%	0.5%	-0.1%	1.9%	0.2%	0.2%	1.9%	2.2%	-0.6%	2.1%	3.5%	3.7%
Export		7.1%	1.1%	-3.7%	-7.6%	3.6%	0.7%	4.0%	4.9%	-0.4%	0.3%	0.4%	-1.8%	4.5%
Annual Inflation														
Local		8.7	8.8	9.4	9.0	10.9	11.0	10.4	11.8	14.3	11.4	12.4	14.6	16.9
Export		17.9	24.0	20.6	16.6	19.4	22.5	24.2	31.1	35.2	31.5	20.5	8.1	5.5