



UGANDA BUREAU OF STATISTICS

P.O. Box 7186, Kampala; Tel: 0414 – 706000; Fax: 0414 – 237553; Email: ubos@ubos.org; Website: www.ubos.org



PRESS RELEASE

CONSUMER PRICE INDICES AND INFLATION RATES

April 2022

1.1 Annual Headline Inflation

The Inflation as measured by the Consumer Price Index for Uganda for the 12 months to April 2022 increased to 4.9 percent, up from 3.7 percent registered in March 2022. This was mainly driven by the increases in the prices of commodities under; 'Food and Non-Alcoholic Beverages' (6.9 percent), 'Housing, Water, Electricity, Gas and Other Fuels' (4.5 percent), 'Furnishings, Household Equipment and Routine Household' (16.5 percent), Recreation, Sport and Culture` (2.9 percent), 'Restaurants and Accommodation Services' (5.0 percent) and 'Transport' (2.3 percent).

However, there were some decreases in the prices of commodities under; 'Personal Care, Social Protection and Miscellaneous Goods' (3.1), 'Clothing and Footwear' (2.9 percent), Health (1.9 percent), Tables 1 and 2.

Table 1. Overall CPI and Rates of Inflation (Base: 2016/17=100)

Month	Overall CPI	Inflation Rate
April 2022	117.98	4.9
March 2022	116.38	3.7
February 2022	115.42	3.2
January 2022	114.30	2.7
December 2021	114.65	2.9
November 2021	114.13	2.6
October 2021	113.93	1.9
September 2021	113.74	2.2
August 2021	113.06	1.9
July 2021	113.10	2.1
June 2021	113.14	2.0
May 2021	112.67	1.9
April 2021	112.50	2.1


Chris N. Mukiza (PhD)
EXECUTIVE DIRECTOR

1.2 Monthly Inflation

The Monthly Headline Inflation for April 2022 increased by 1.4 percent compared to the 0.8 percent rise recorded in the month of March 2022. This is mainly attributed to the monthly Food and Non- Alcoholic Beverages Inflation that rose by 3.1 percent April 2022 from the 1.4 percent rise recorded in March 2022.

In addition, the monthly Inflation for 'Housing, Water, Electricity, Gas and Other Fuels' increased by 2.1 percent in April 2022 compared to the 0.5 percent rise recorded in March 2022. 'Furnishings, Household Equipment and Routine Household' increased by 2.8 percent compared to 3.8 percent rise recorded in March 2022 and Transport by 1.2 percent rise in April 2022 compared to the 0.4 percent rise recorded in March 2022.

However, monthly 'Personal Care, Social Protection and Miscellaneous Goods' decreased by 0.8 percent compared to the 0.1 percent increase recorded in March 2022. Monthly 'Information and Communication' Inflation declined by 0.1 percent in the month of April 2022 compared to the 0.8 percent drop recorded in March 2022, Table 2.

Table 2: Monthly and Annual Changes in the Consumer Price Indices in April 2022

13 COICOP Divisions	Weight	Monthly % Change April 2022/March 2022	Annual % Change April 2022/April 2021
Food and Non-Alcoholic Beverages	270.54	3.1	6.9
Alcoholic Beverages, Tobacco and Narcotics	38.80	0.3	1.5
Clothing and Footwear	69.77	0.0	2.9
Housing, Water, Electricity, Gas and Other Fuels	104.16	2.1	4.5
Furnishings, Household Equipment and Routine Household	48.37	2.8	16.5
Health	47.47	0.1	1.9
Transport	104.55	1.2	2.3
Information and Communication	44.32	-0.1	-2.4
Recreation, Sport and Culture	49.85	1.1	2.9
Education Services	57.96	0.0	9.0
Restaurants and Accommodation Services	87.38	0.6	5.0
Insurance and Financial Services	22.80	-0.1	2.4
Personal Care, Social Protection and Miscellaneous Goods	54.04	-0.8	3.1
Overall	1,000.00	1.4	4.9

Relative to March 2022, the national average retail prices of selected commodities in April 2022 are shown in table 3.

Table 3: National Average retail prices of Selected Commodities

Commodity Name	Quantity	Unit of Measure	Average Price March 2022	Average Price April 2022
Sugar	1000	Gramme(s)	3,556	3,745
Refined Oil	1	Litre	10,114	11,110
Cement	50	Kg	29,481	36,037
Ordinary laundry soap small	1000	Gramme(s)	5,790	6,353
Laundry soap big	1000	Gramme(s)	6,988	7,798
Petrol	1	Litre	5,087	5,209
Diesel	1	Litre	4,327	4,704
Watermelon	1000	Gramme(s)	1,060	1,351
Cucumber	1000	Gramme(s)	2,765	3,291
Matooke (Cluster)	1000	Gramme(s)	931	1,053
Carrots	1000	Gramme(s)	2,766	3,149
Passion fruit	1000	Gramme(s)	5,345	6,619

1.3 Annual Core, Food crops & related items and EFU Inflation

The Core Inflation for the 12 months to April 2022 increased to 4.3 percent in April 2022, up from 3.6 percent registered in March 2022. This is mainly attributed to Annual Other Goods Inflation that increased to 6.6 percent for the 12 months to April 2022 up from 5.4 percent recorded in March 2022. In addition, Annual 'Services' Inflation increased to 1.7 percent for the 12 months to April 2022 up from 1.4 percent in March 2022, Table 4.

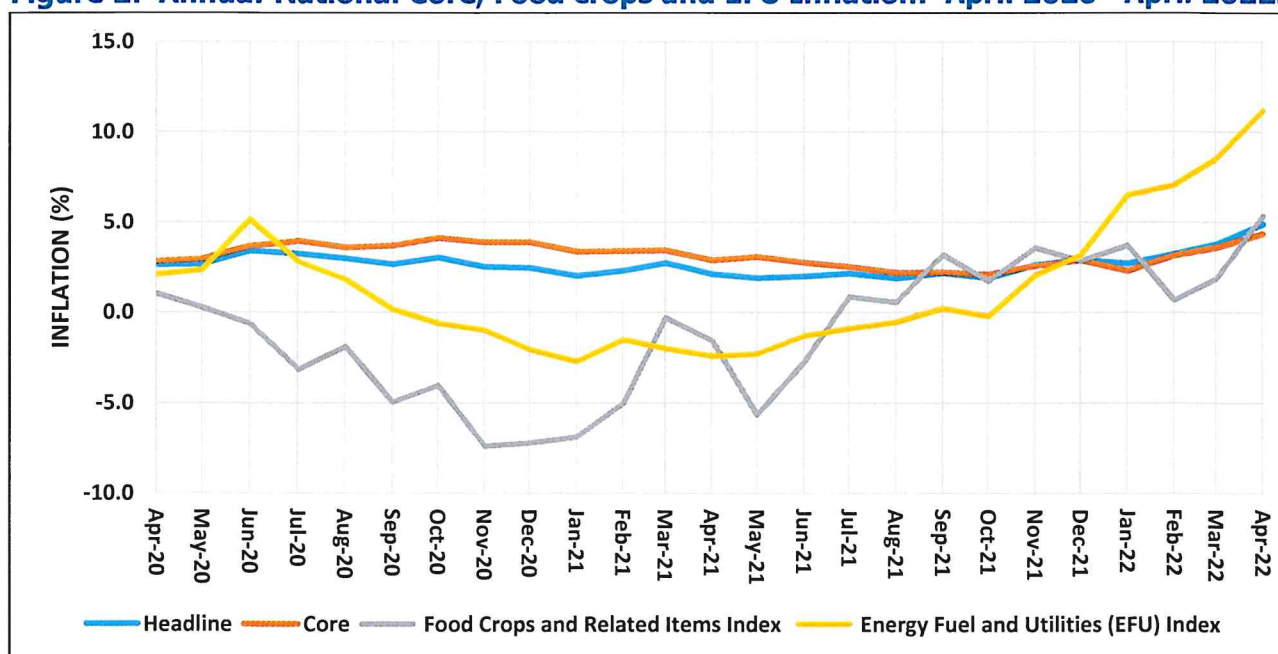
Table 4: Annual National Core, Food crops and EFU Inflation for March 2022 and April 2022.

Description	March 2022	April 2022
Headline	3.7	4.9
Core	3.6	4.3
<i>Other Goods</i>	5.4	6.6
<i>Services</i>	1.4	1.7
Food Crops and Related Items	1.9	5.4
Energy Fuel and Utilities (EFU)	8.5	11.2

The 'Food Crops and Related Items' Inflation for the 12 months to April 2022 increased to 5.4 percent up from 1.9 percent in March 2022. This was mainly due to Annual 'Vegetables, tubers, plantains, cooking bananas and pulses' Inflation that increased to 4.5 percent in April 2022, up from 1.7 percent registered in March 2022. Specifically, Tomatoes Inflation increased to minus 16.9 percent in April 2022 up from minus 27.7 percent registered in March 2022.

In addition, Annual Energy Fuel and Utilities Inflation (EFU) increased to 11.2 percent, up from 8.5 percent in March 2022. The increase in EFU Inflation was mainly due to Annual Liquid Energy Fuels Inflation that increased to 30.3 percent in April 2022, up from 26.4 percent in March 2022. Specifically, Annual Liquefied gas Inflation increased to 20.2 percent in April 2022 up from 9.9 percent registered in March 2022. Also, Solid Fuels, specifically Charcoal inflation increased to 3.4 percent in April 2022 up from minus 1.1 percent in March 2022, Table 4 and Figure 2.

Figure 2: Annual National Core, Food crops and EFU Inflation: April 2020– April 2022.



1.4 Annual Goods Inflation

The Goods Inflation for the 12 months to April 2022 increased to 6.9 percent up from 5.3 percent recorded in March 2022. This was due to Annual Inflation for Non-Durable (ND) goods that increased to 8.2 percent for the 12 months to April 2022 up from 5.8 percent recorded in March 2022. However, Annual Semi-Durable Goods (SD) Inflation decreased to 3.8 percent in April 2022 down from 4.3 percent in March 2022. Annual Inflation for Durables (D) goods decreased to 1.7 percent for the 12 months to April 2022 down from 2.3 percent in March 2022, Table 5 below.

Table 5: Annual National Goods Inflation for March 2022 and April 2022.

Description	March 2022	April 2022
Headline	3.7	4.9
Goods	5.3	6.9
Non-Durable (ND)	5.8	8.2
Semi-Durables (SD)	4.3	3.8
Durables (D)	2.3	1.7

1.5 Annual Headline Inflation by Income Groups and Geographical areas

Analysis by geographical areas and income groups revealed that Gulu registered the highest Inflation of 6.9 percent for the 12 months to April 2022, up from 5.5 percent recorded in March 2022. This was mainly driven by annual 'Housing, Water, Electricity, Gas and Other Fuels' Inflation that increased to 12.9 percent in April 2022, up from 7.7 percent registered in March 2022. In addition, annual 'Recreation, Sport and Culture' Inflation increased to 11.4 percent in April 2022, up from 3.6 percent in March 2022.

The second highest Inflation was registered in Fortportal at 5.8 percent for the 12 months to April 2022 up from 3.7 percent recorded in March 2022. This was mainly driven by Annual 'Food and Non-Alcoholic Beverages' Inflation that increased to 6.3 percent in April 2022 up from 1.3 percent registered in March 2022. In addition Annual 'Furnishings, Household Equipment and Routine Household' Inflation increased to 21.1 percent in April 2022 up from 12.5 percent in March 2022.

The least Annual Inflation was registered in Jinja at 3.8 percent for the 12 months to April 2022 up from 2.6 percent recorded in March 2022. The low inflation in the Centre was mainly due to 'Restaurants and Accommodation Services' Inflation that declined to 5.9 Percent for the 12 months to April 2022 down from 7.2 percent in March 2022. In addition, Annual 'Personal Care, Social Protection and Miscellaneous Goods' Inflation declined to 4.4 percent in April 2022 down from 6.9 percent in March 2022.

Figure 3: Annual Inflation by Income Groups and Geographical Areas for the 12 months to March 2022 and April 2022

