



## UGANDA CONSUMER PRICE INDEX (2016/17=100)

MAY 2022



UGANDA BUREAU OF STATISTICS



P.O. Box 7186, Kampala;  
 Tel: 0414 – 706000;  
 Fax: 0414 – 237553;  
 Email: [ubos@ubos.org](mailto:ubos@ubos.org);  
 Website: [www.ubos.org](http://www.ubos.org)



## FOREWORD

This publication provides the monthly Consumer Price Indices for Uganda (Composite) and for the ten centres of Kampala High Income, Kampala Middle Income, Kampala Low Income, Jinja, Mbale, Masaka, Mbarara, Fortportal, Gulu and Arua. All the baskets are for the urban households.

The current Consumer Price Index has been rebased from 2009/2010 to 2016/2017, using weights derived from the Uganda National Household Survey (UNHS VI) that was conducted from July 2016 to June 2017. The rebased CPI is classified using international standards, referred to as Classification of Individual Consumption According to Purpose (COICOP 2018). This is a shift from the COICOP 1999 that was used in the earlier series. COICOP 2018 is more detailed than the previous (1999) version, responding to the users' need for more detail, and addresses several other issues that required revision of the classification. The new COICOP of 2018 reflects the significant changes in goods and services in some areas, improved links of COICOP to other classifications, and addresses emerging statistical and policy needs of regional and international users.

At the elementary aggregate (EA) level, the indices are computed using the Jevons (Geometric Mean) method for all items within the elementary aggregates. The modified Laspeyres index formula is used to compute higher level indices. The National CPI is computed as a weighted average of the ten centres mentioned above and rebased indices are available from July 2017 to date at EA level.



Chris N. Mukiza (PhD)

**EXECUTIVE DIRECTOR**

## ACRONYMS AND DEFINITIONS

**COICOP:** Classification of Individual Consumption According to Purpose, is a nomenclature developed by the United Nations Statistics Division to classify and analyse individual consumption expenditures incurred by households, non-profit institutions serving households and general government according to their purpose.

**CPI:** Consumer Price Index - a general indicator of price levels paid by households for consumer goods and services.

**CPI basket:** A commonly used term for the goods and services priced for the purpose of compiling the CPI.

**Elementary aggregate (EA):** The lowest level of commodity classification in the CPI, and the only level for which index numbers are constructed by direct reference to price data.

**Inflation:** A term commonly used to refer to changes in price levels. A rise in prices is called inflation, and a persistent fall is called deflation.

**Jevons price index:** An elementary price index defined as the un-weighted geometric average of the sample price relatives. It can also be defined as the un-weighted geometric average of the current to base period price relatives.

**Laspeyres price index:** The Laspeyres price index is an index formula used in price statistics for measuring the price development of the basket of goods and services consumed in the base period. The question it answers is how much a basket that consumers bought in the base period would cost in the current period.

**Outlet:** The interface between a supplier of products and the consumer. It may be a shop, a market stall, a catalogue, a website etc. Also referred to as a "retail outlet", although it can include wholesale outlets which also sell directly to the consumers

**Outlier:** A term used to describe any extreme value in a set of data, such as a price or price relative that requires further investigation or has been verified as incorrect

**Price relative:** A measure of price movements: the ratio of the price level in one period to the price level in another.

**Reference base:** The period in which the CPI is given a value of 100.0. The CPI is currently on a reference base of 2016/17.

**Weight:** The measure of the importance of an item in the index regimen relative to the other items. Weights can be expressed in either quantity or value terms. Value weights are used in the CPI.

## TABLE OF CONTENTS

FOREWORD .....	I
ACRONYMS AND DEFINITIONS .....	II
TABLE OF CONTENTS .....	III
LIST OF TABLES .....	IV
1.0 HIGHLIGHTS OF UGANDA CPI FOR MAY 2022 .....	<b>ERROR! BOOKMARK NOT DEFINED.</b>
1.1 Annual Headline Inflation .....	1
1.3 Annual Core and Non-Core Inflation.....	3
1.4 Annual Goods Inflation.....	4
1.5 Annual Headline Inflation by Income Groups and Geographical areas.....	5
ANNEX 1: ANNUAL INFLATION BY COICOP DIVISIONS.....	6
01 Food and Non-Alcoholic Beverages .....	6
02 Alcoholic Beverages, Tobacco & Narcotics.....	6
03 Clothing and Footwear .....	6
04 Housing, Water, Electricity, Gas and other Fuels .....	7
05 Furnishings, Household Equipment and Routine Household Maintenance.....	8
06 Health .....	8
07 Transport .....	8
08 Information and Communication .....	9
09 Recreation, Sport and Culture .....	9
10 Education Services .....	9
11 Restaurants and Accommodation Services .....	10
12 Insurance and Financial Services.....	10
13 Personal Care, Social Protection and Miscellaneous Goods .....	10
ANNEX 2: MONTHLY INFLATION BY COICOP DIVISIONS.....	11
01 Food and Non-Alcoholic Beverages .....	11
02 Alcoholic Beverages, Tobacco & Narcotics .....	11
03 Clothing and Footwear .....	11
04 Housing, Water, Electricity, Gas and other Fuels .....	11
05 Furnishings, Household Equipment and Routine Household Maintenance.....	12
06 Health .....	12
07 Transport .....	12
08 Information and Communication .....	13
09 Recreation, Sport and Culture .....	13
10 Education Services .....	13
11 Restaurants and Accommodation Services .....	13
12 Insurance and Financial Services .....	14
13 Personal Care, Social Protection and Miscellaneous Goods.....	14

## LIST OF TABLES

Table 6: Uganda Consumer Price Index (CPI) and Inflation for Core, Food Crops, & EFU: (2016/17) = 100.....	15
Table 7: Energy Fuel and Utilities (EFU) Index, Annual and Monthly % Changes, (2016/17) = 100.....	16
Table 8: Uganda Annual Inflation by COICOP Divisions (FEBRUARY 2021 – MAY 2022)...	A
Table 9: Uganda Monthly Inflation by COICOP Divisions (FEBRUARY 2021 – MAY 2022).	B
Table 10: Uganda Consumer Price Index (CPI) by COICOP Division: (2016/17) = 100. ...	C
Table 11: Uganda Consumer Price Index (CPI) and Inflation for CORE & Non CORE: (2016/17) = 100.....	D
Table 12: Uganda Consumer Price Index (CPI) and Inflation for Food & Non Food: (2016/17) = 100.....	E
Table 13: Uganda Consumer Price Index (CPI) and Inflation for Food Crops, Other Goods, Services and Energy Fuel & Utilities: (2016/17) = 100. ....	F
Table 14: Uganda Annual and Monthly Inflation by Income Groups and Geographical Areas :.....	G
Table 15: Uganda Consumer Price Index (CPI) by Income Groups and Geographical Areas : (2016/17) = 100. ....	H

## 1.0 HIGHLIGHTS OF UGANDA CPI FOR MAY 2022

### 1.1 Annual Headline Inflation

The Inflation as measured by the Consumer Price Index for Uganda for the 12 months to May 2022 increased to 6.3 percent, up from 4.9 percent registered in April 2022. This was mainly driven by the increases in the prices of commodities under; 'Food and Non-Alcoholic Beverages' (11.0 percent), 'Transport' (4.4 percent), 'Personal Care, Social Protection and Miscellaneous Goods' (3.9), 'Furnishings, Household Equipment and Routine Household' (17.3 percent), 'Alcoholic Beverages, Tobacco and Narcotics' (2.3 percent) and 'Recreation, Sport and Culture' (3.3 percent).

However, there were some decreases in the prices of commodities under; 'Restaurants and Accommodation Services' (4.3 percent) 'Education Services' (8.4 percent), 'Information and Communication' (minus 2.7 percent), Tables 1 and 2.

**Table 1. Overall CPI and Rates of Inflation (Base: 2016/17=100)**

Month	Overall CPI	Inflation Rate
May 2022	119.73	6.3
April 2022	117.98	4.9
March 2022	116.38	3.7
February 2022	115.42	3.2
January 2022	114.30	2.7
December 2021	114.65	2.9
November 2021	114.13	2.6
October 2021	113.93	1.9
September 2021	113.74	2.2
August 2021	113.06	1.9
July 2021	113.10	2.1
June 2021	113.14	2.0
May 2021	112.67	1.9

## 1.2 Monthly Inflation

The Monthly Headline Inflation for May 2022 increased by 1.5 percent compared to the 1.4 percent rise recorded in the month of April 2022. This is mainly attributed to the monthly Food and Non- Alcoholic Beverages Inflation that rose by 3.5 percent in May 2022 from the 3.1 percent rise recorded in April 2022.

In addition, the monthly Inflation for Transport increased by 3.0 percent in May 2022 compared to the 1.2 percent rise recorded in April 2022. 'Personal Care, Social Protection and Miscellaneous Goods' increased by 1.1 percent compared to the 0.8 percent drop recorded in April 2022. 'Furnishings, Household Equipment and Routine Household' increased by 1.1 percent compared to 2.8 percent rise recorded in April 2022 and 'Alcoholic Beverages, Tobacco and Narcotics' increased by 1.0 percent compared to 0.3 percent rise recorded in April 2022.

However, monthly 'Housing, Water, Electricity, Gas and Other Fuels' decreased by 0.2 percent in May 2022 compared to the 2.1 percent rise recorded in April 2022. Monthly 'Information and Communication' Inflation declined by 0.1 percent in the month of May 2022 the same drop recorded in April 2022, Table 2.

**Table 2: Monthly and Annual Changes in the Consumer Price Indices in May 2022**

<b>13 COICOP Divisions</b>	<b>Weight</b>	<b>Monthly % Change May 2022/April 2022</b>	<b>Annual % Change May 2022/May 2021</b>
Food and Non-Alcoholic Beverages	270.54	3.5	11.0
Alcoholic Beverages, Tobacco and Narcotics	38.80	1.0	2.3
Clothing and Footwear	69.77	0.2	3.1
Housing, Water, Electricity, Gas and Other Fuels	104.16	-0.2	4.4
Furnishings, Household Equipment and Routine Household	48.37	1.1	17.3
Health	47.47	0.2	2.1
Transport	104.55	3.0	4.4
Information and Communication	44.32	-0.1	-2.7
Recreation, Sport and Culture	49.85	0.4	3.3
Education Services	57.96	0.0	8.4
Restaurants and Accommodation Services	87.38	0.0	4.3
Insurance and Financial Services	22.80	0.1	2.8
Personal Care, Social Protection and Miscellaneous Goods	54.04	1.1	3.9
<b>Overall</b>	<b>1,000.00</b>	<b>1.5</b>	<b>6.3</b>

Relative to May 2021 and April 2022, the national average retail prices of selected commodities in May 2022 are shown in table 3.

**Table 3: National Average retail prices of Selected Commodities**

Commodity Name	Quantity	Unit of Measure	Average Price May 2021	Average Price April 2022	Average Price May 2022
Diesel	1	Litre	3,522	4,704	5,376
Kerosene/Paraffin	1	Litre	3,098	3,330	3,720
Maize Flour	1000	Gramme(s)	1,806	2,275	2,703
Whole grain maize	1000	Gramme(s)	1,371	1,428	1,665
Sorghum Grains	1000	Gramme(s)	1,235	1,176	1,298
Fresh Beans	1000	Gramme(s)	5,114	5,407	5,565
Cassava Flour	1000	Gramme(s)	1,672	1,659	1,855
Yams	1000	Gramme(s)	1,759	2,014	2,208
Sugar	1	Kg	3,159	3,745	3,752
Ordinary laundry soap small	1	Kg	3,418	6,353	6,631
Laundry soap big	1	Kg	4,028	7,798	7,742
Refined Oil	1	Litre	7,344	11,110	11,111

### 1.3 Annual Core, Food crops & related items and EFU Inflation

The Core Inflation for the 12 months to May 2022 increased to 5.1 percent in May 2022, up from 4.3 percent registered in April 2022. This is mainly attributed to Annual Other Goods Inflation that increased to 7.8 percent for the 12 months to May 2022 up from 6.6 percent recorded in April 2022. In addition, Annual 'Services' Inflation increased to 2.0 percent for the 12 months to May 2022 up from 1.7 percent in April 2022, Table 4.

**Table 4: Annual National Core, Food crops and EFU Inflation for April 2022 and May 2022.**

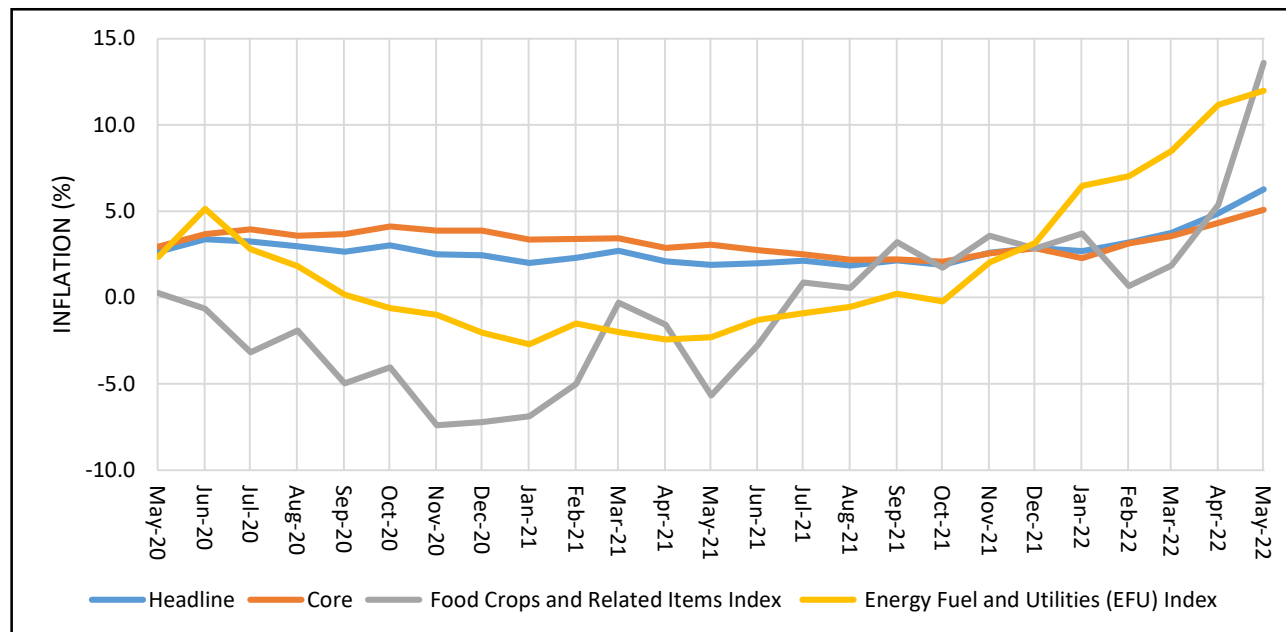
Description	April 2022	May 2022
<b>Headline</b>	<b>4.9</b>	<b>6.3</b>
<b>Core</b>	<b>4.3</b>	<b>5.1</b>
<i>Other Goods</i>	6.6	7.8
<i>Services</i>	1.7	2.0
<b>Food Crops and Related Items</b>	<b>5.4</b>	<b>13.6</b>
<b>Energy Fuel and Utilities (EFU)</b>	<b>11.2</b>	<b>12.0</b>

The 'Food Crops and Related Items' Inflation for the 12 months to May 2022 increased to 13.6 percent up from 5.4 percent in April 2022. This was mainly due to Annual 'Vegetables, tubers, plantains, cooking bananas and pulses' Inflation that increased to 16.2 percent in May 2022, up from 4.5 percent registered in April 2022. Specifically, Tomatoes Inflation increased to 41.5 percent in May 2022 up from minus 16.9 percent registered in April 2022.



In addition, Annual Energy Fuel and Utilities Inflation (EFU) increased to 12.0 percent, up from 11.2 percent in April 2022. The increase in EFU Inflation was mainly due to Annual Liquid Energy Fuels Inflation that increased to 34.9 percent in May 2022, up from 30.3 percent in April 2022. Specifically, Diesel Inflation increased to 54.0 percent in May 2022 up from 38.0 percent registered in April 2022. Also, Kerosene inflation increased to 23.0 percent in May 2022 up from 9.5 percent in April 2022, Table 4 and Figure 2.

**Figure 2: Annual National Core, Food crops and EFU Inflation: May 2020– May 2022.**



### 1.4 Annual Goods Inflation

The Goods Inflation for the 12 months to May 2022 increased to 9.0 percent up from 6.9 percent recorded in April 2022. This was mainly due to Annual Inflation for Non-Durable (ND) goods that increased to 10.9 percent for the 12 months to May 2022 up from 8.2 percent recorded in April 2022. In addition, Annual Inflation for Durables (D) goods increased to 3.0 percent for the 12 months to May 2022 up from 1.7 percent in April 2022. However, Annual Semi-Durable Goods (SD) Inflation decreased to 3.7 percent in May 2022 down from 3.8 percent in April 2022, Table 5 below.

**Table 5: Annual National Goods Inflation for April 2022 and May 2022.**

Description	April 2022	May 2022
<b>Headline</b>	<b>4.9</b>	<b>6.3</b>
<b>Goods</b>	<b>6.9</b>	<b>9.0</b>
<i>Non-Durable (ND)</i>	8.2	10.9
<i>Semi-Durables (SD)</i>	3.8	3.7
<i>Durables (D)</i>	1.7	3.0

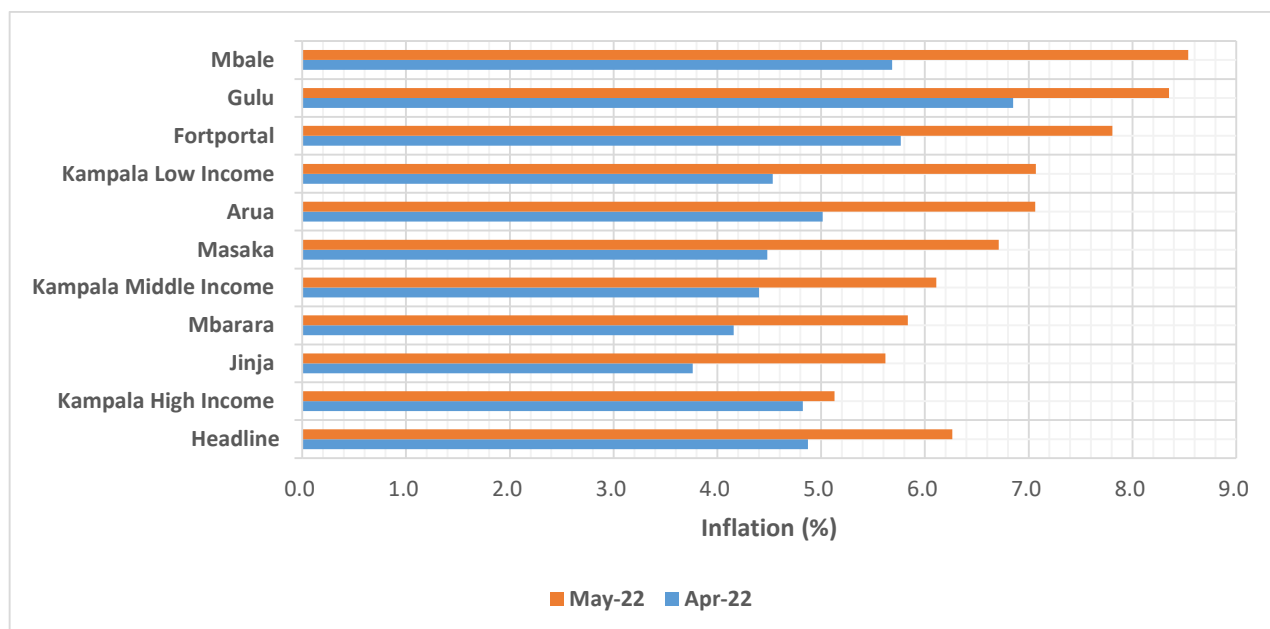
### 1.5 Annual Headline Inflation by Income Groups and Geographical areas

Analysis by geographical areas and income groups revealed that Mbale registered the highest Inflation of 8.5 percent for the 12 months to May 2022 up from 5.7 percent recorded in April 2022. This was mainly driven by annual 'Food and Non-Alcoholic Beverages' Inflation that increased to 16.2 percent in May 2022 up from 8.0 percent registered in April 2022. In addition, annual Transport Inflation increased to 6.4 percent in May 2022, up from 1.5 percent in April 2022.

The second highest Inflation was registered in Gulu at 8.4 percent for the 12 months to May 2022 up from 6.9 percent recorded in April 2022. This was mainly driven by annual 'Food and Non-Alcoholic Beverages' Inflation that increased to 17.9 percent in May 2022, up from 7.8 percent registered in April 2022. In addition, annual 'Furnishings, Household Equipment and Routine Household' Inflation increased to 25.3 percent in May 2022, up from 23.3 percent in April 2022.

The least Annual Inflation was registered in Kampala High Income at 5.1 percent for the 12 months to May 2022 up from 4.8 percent recorded in April 2022. The low inflation was mainly driven by annual 'Restaurants and Accommodation Services' Inflation that decreased to 3.3 percent in May 2022 down from 5.2 percent registered in April 2022. In addition, annual Education Services Inflation decreased to 11.4 percent in May 2022, down from 12.1 percent in April 2022.

**Figure 3: Annual Inflation by Income Groups and Geographical Areas for the 12 months to April 2022 and May 2022**



## ANNEX 1: ANNUAL INFLATION BY COICOP DIVISIONS

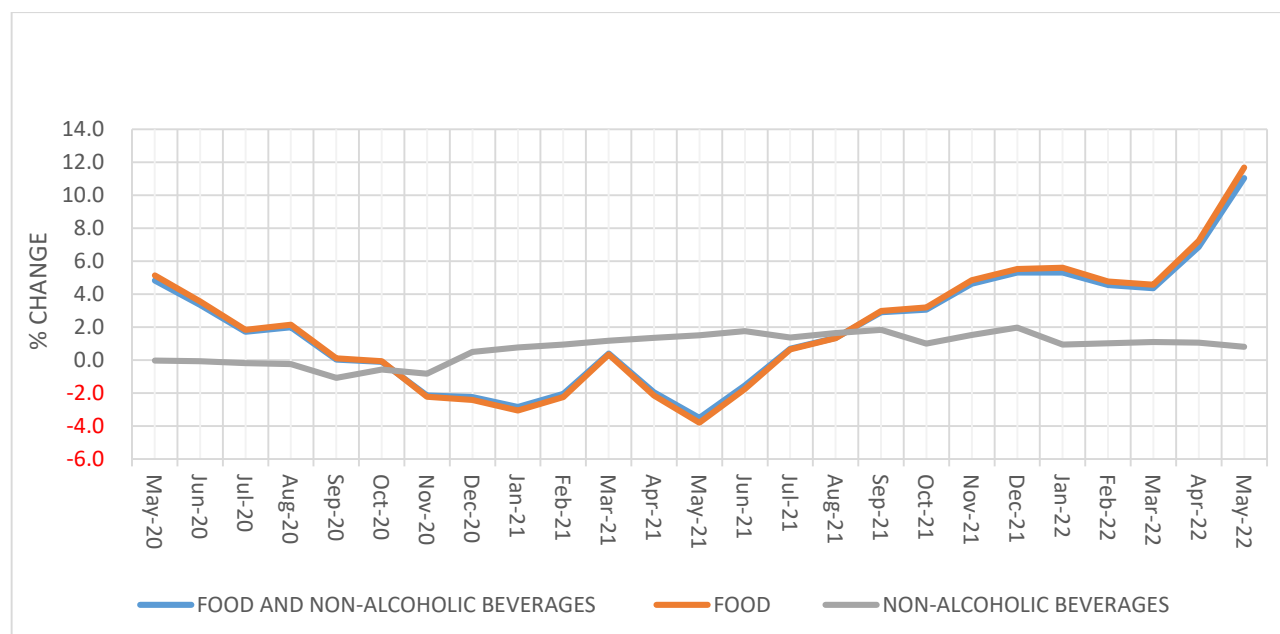
The evolution of Annual Inflation according to COICOP is described in the following paragraphs, reference is made to table 6.

### 01 Food and Non-Alcoholic Beverages

The Inflation for Food and Non-Alcoholic Beverages was registered at 11.0 percent for the 12 months to May 2022 up from 6.9 percent recorded in April 2022. The increase was due to Annual Food Inflation that increased to 11.7 percent in May 2022 up from 7.2 percent recorded in April 2022.

However, Non-Alcoholic Beverages Inflation decreased to 0.8 percent for the 12 months to May 2022 down from 1.0 percent recorded in April 2022. *Figure 4 shows the trends of Food and Non Alcoholic Beverages Annual Inflation from May 2020 to May 2022.*

**Figure 4: Food and Non Alcoholic Beverages Annual Inflation Trends; May 2020 – May 2022.**



### 02 Alcoholic Beverages, Tobacco & Narcotics

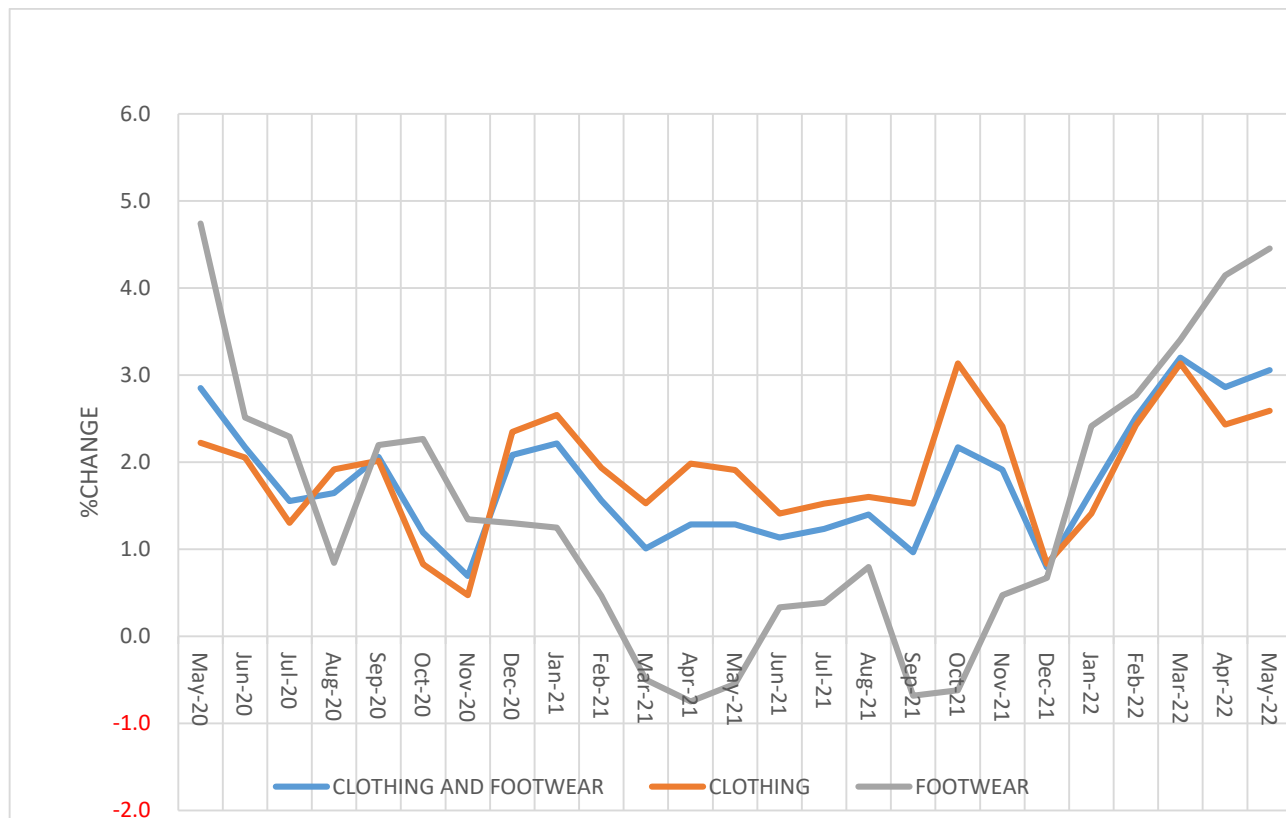
The Inflation for Alcoholic Beverages, Tobacco & Narcotics increased to 2.3 percent for the 12 months to May 2022 up from 1.5 percent recorded in April 2022. The increase was due to the Annual Alcoholic Beverages Inflation that increased to 2.6 percent in May 2022 up from 1.6 percent recorded in April 2022. However, Annual Tobacco Inflation decreased to minus 1.0 percent for the 12 months to May 2022 down from 0.3 percent recorded in April 2022.

### 03 Clothing and Footwear

The Inflation for Annual Clothing and Footwear increased to 3.1 percent for the 12 months to May 2022 up from 2.9 percent recorded in April 2022. The increase was mainly attributed to Clothing Inflation that increased to 2.6 percent in May 2022 up from 2.4 percent recorded

in April 2022. In addition, Footwear Inflation increased to 4.5 percent for the 12 months to May 2022 up from 4.1 percent recorded in April 2022. Figure 5 shows the trends of Clothing and Footwear Inflation from May 2020 to May 2022.

**Figure 5: Clothing and Footwear Annual Inflation Trends; May 2020 – May 2022.**



#### 04 Housing, Water, Electricity, Gas and other Fuels

Housing, Water, Electricity, Gas and Other Fuels comprises of Actual Rentals for Housing, Maintenance, Repair and Security of the Dwelling, Water Supply and Miscellaneous Services Relating to the Dwelling, Electricity, Gas and Other Fuels.

The Inflation for Housing, Water, Electricity, Gas & Other Fuels decreased to 4.4 percent for the 12 months to May 2022 down from 4.5 percent recorded in April 2022. This was mainly attributed to Annual Maintenance, Repair and Security of the Dwelling Inflation that decreased to 17.2 percent in May 2022 down from 19.9 percent recorded in April 2022.

In addition, Annual Electricity, Gas and Other Fuels Inflation decreased to 5.7 percent for the 12 months to May 2022 down from 6.1 percent recorded in April 2022.

However, Actual Rentals for Housing Inflation increased to 1.4 percent for the 12 months to May 2022 up from 0.7 percent recorded in April 2022. Annual Water Supply and Miscellaneous Services Relating to the Dwelling Inflation increased to 0.4 percent for the 12 months to May 2022 up from 0.2 percent recorded in April 2022.

## **05 Furnishings, Household Equipment and Routine Household Maintenance**

This Division Comprises of Furniture, Furnishings, and Loose Carpets, Household Textiles, Household Appliances, Glassware, Tableware and Household Utensils, Tools and Equipment for House & Garden, and Goods & Services for Routine Household Maintenance.

The Inflation for Furnishings, Household Equipment & Routine Household Maintenance increased to 17.3 percent for the 12 months to May 2022 up from 16.5 percent recorded in April 2022. The increase was mainly due to Goods & Services for Routine Household Maintenance Inflation that increased to 32.3 percent in May 2022 up from 30.5 percent in April 2022. In addition, Household Appliances Inflation increased to 5.2 percent in May 2022 up from 4.9 percent recorded in April 2022..

However, Household Textiles Inflation decreased to 2.0 percent for the 12 months to May 2022 down from 2.7 percent recorded in April 2022. Glassware, Tableware and Household Utensils Inflation decreased to 2.6 percent for the 12 month to May 2022 down from 2.8 percent recorded in April 2022. 'Furniture, Furnishings, and Loose Carpets' Inflation decreased to 3.9 percent for the 12 months to May 2022 down from 4.0 percent in April 2022. Tools and Equipment for House & Garden Inflation decreased to 1.8 percent for the 12 months to May 2022 down from 1.9 percent in April 2022.

## **06 Health**

The Health Division comprises of Medicines and Health Products, Outpatient Care Services, Inpatient Care Services and Other Health Services.

The Inflation for Health increased to 2.1 percent for the 12 months to May 2022 up from 1.9 percent recorded in April 2022. This was mainly due to Inpatient Care Services Inflation that increased to 3.8 percent for the 12 months to May 2022 up from 3.4 percent recorded in April 2022. Outpatient Care Services Inflation also increased to 0.7 percent in May 2022 up from 0.2 percent recorded in April 2022. Annual Other Health Services Inflation also increased to 2.4 percent for the 12 months to May 2022 up from 1.9 percent recorded in April 2022.

However, Annual Medicines and Health Products Inflation decreased to 1.8 percent for the 12 months to May 2022 down from 1.9 percent in April 2022.

## **07 Transport**

Transport division comprises of Purchase of vehicles, Operation of Personal Transport Equipment and Passenger Transport Services. The Inflation for Transport increased to 4.4 percent for the 12 months to May 2022 up from 2.3 percent recorded in April 2022. This was mainly attributed to Annual Passenger Transport Services Inflation that increased to minus 4.4 percent for the 12 months to May 2022 up from minus 8.9 percent registered in April 2022.

In addition, Annual Purchase of vehicles Inflation that increased to 2.7 percent in May 2022 up from minus 0.1 percent recorded in April 2022.

However, Annual Operation of Personal Transport Equipment Inflation decreased to 16.5 percent in May 2022 down from 18.8 percent recorded in April 2022.

## **08 Information and Communication**

Information and Communication includes Information and Communication Equipment, and Information and Communication Services.

The Annual Inflation for Information and Communication decreased to minus 2.7 percent for the 12 months to May 2022 down from minus 2.4 percent recorded in April 2022. This was mainly due to the Annual Information and Communication Equipment Inflation that decreased to 3.0 percent for the 12 months to May 2022 down from 3.8 percent recorded in April 2022. In addition, Annual Information and Communication Services Inflation decreased to minus 5.1 percent in May 2022 down from minus 5.0 percent recorded in April 2022.

## **09 Recreation, Sport and Culture**

Recreation, Sport and Culture comprises of Other Recreational Goods, Gardens and Pets, Recreational Services, Cultural Services, Newspapers, Books & Stationery and Package Holidays.

The Annual Inflation for Recreation, Sport and Culture increased to 3.3 percent for the 12 months to May 2022 up from 2.9 percent recorded in April 2022. This was mainly due to Annual Newspapers, Books & Stationery Inflation that increased to 2.9 percent for the 12 months to May 2022 up from 1.8 percent recorded in April 2022. In addition, Annual Cultural Services Inflation also increased to 4.7 percent in May 2022 up from 4.4 percent recorded in April 2022. Annual Gardens and Pets Inflation increased to 4.8 percent for the 12 months to May 2022 up from 3.4 percent recorded in April 2022.

However, Annual Recreational Services Inflation decreased to 1.1 percent for the 12 months to May 2022 down from 2.8 percent recorded in April 2022. Annual Package Holidays Inflation registered minus 10.8 percent for the 12 months to May 2022 the same rate recorded in April 2022. Annual Other Recreational Goods Inflation registered 3.6 percent for the 12 months to May 2022 the same rate recorded in April 2022.

## **10 Education Services**

Education Services comprises of Early Childhood and Primary Education, Secondary Education, Post-secondary non-tertiary education, Tertiary Education and Education not Defined by level.

The Annual Inflation for Education Services decreased to 8.4 percent for the 12 months to May 2022 down from 9.0 percent recorded in April 2022. This was due to Annual Tertiary Education Inflation that decreased to 0.0 percent in May 2022 down from 3.3 percent recorded in April 2022.

However, Early Childhood and Primary Education Inflation registered 14.7 percent in May 2022 the same rate recorded in April 2022.

In addition, Annual Secondary Education Inflation registered 6.4 percent for the 12 months to May 2022 the same rate recorded in April 2022. Annual Post-secondary non-tertiary education Inflation registered 1.9 percent in May 2022 the same rate recorded in April 2022.

Annual Education not Defined by level registered minus 0.1 percent for the 12 months to May 2022 the same rate recorded in April 2022.

### **11 Restaurants and Accommodation Services**

Restaurants and Accommodation Services comprises of Food and Beverage Serving Services and Accommodation Services.

Annual Inflation for Restaurants and Accommodation Services decreased to 4.3 percent for the 12 months to May 2022 down from 5.0 percent recorded in April 2022. This was due to Annual Food and Beverage Serving Services Inflation that decreased to 5.1 percent for the 12 months to May 2022 down from 6.3 percent recorded in April 2022.

However, Annual Accommodation services Inflation increased to 2.6 percent in May 2022 up from 2.2 percent recorded in April 2022.

### **12 Insurance and Financial Services**

Insurance and Financial Services comprises of Insurance and Financial Services.

The Annual Insurance and Financial Services Inflation for the 12 months to May 2022 increased to 2.8 percent up from 2.4 percent recorded in April 2022. This was due to Annual Insurance Services Inflation that increased to 0.9 percent for the 12 months to May 2022 up from minus 0.4 percent in April 2022.

In addition, Annual Financial Services Inflation increased to 3.0 percent in May 2022 up from 2.7 percent recorded in April 2022.

### **13 Personal Care, Social Protection and Miscellaneous Goods**

Personal Care, Social Protection and Miscellaneous Goods comprises of Personal Care, Personal Effects n.e.c, Social Protection and Other services n.e.c.

The Annual Personal Care, Social Protection and Miscellaneous Goods Inflation for the 12 months to May 2022 increased to 3.9 percent for the 12 months to May 2022 up from 3.1 percent recorded in April 2022. This was mainly due to Annual Personal Care Inflation that increased to 4.3 percent for the 12 months to May 2022 up from 2.7 percent recorded in April 2022. In addition, Annual Personal Effects n.e.c Inflation increased to 7.5 percent in May 2022 up from 7.3 percent recorded in April 2022.

However, Annual Other Services n.e.c Inflation decreased to minus 2.5 percent for the 12 months to May 2022 down from minus 0.5 percent recorded in April 2022. Annual Social Protection Inflation registered 15.2 percent in May 2022 the same rate recorded in April 2022.

## ANNEX 2: MONTHLY INFLATION BY COICOP DIVISIONS

The evolution of Monthly Inflation according to COICOP is described in the following paragraphs, reference is made to table 4.

### 01 Food and Non-Alcoholic Beverages

The Monthly Inflation for Food and Non-alcoholic Beverages increased by 3.5 percent for the month of May 2022 from the 3.1 percent rise recorded in April 2022 . This was mainly due to the monthly Food Inflation that increased by 3.7 percent for the month of May 2022 from the 3.2 percent rise recorded in April 2022 . In addition, Non-Alcoholic Beverages Inflation increased by 0.2 percent for the month of May 2022 from the 0.4 percent rise recorded in April 2022.

### 02 Alcoholic Beverages, Tobacco & Narcotics

The Monthly Inflation for Alcoholic Beverages, Tobacco & Narcotics increased by 1.0 percent during the month of May 2022 from the 0.3 percent rise recorded for the month of April 2022. This was due to Alcoholic Beverages Inflation that increased by 1.1 percent for the month of May 2022 from the 0.3 percent rise recorded in April 2022.

However, Tobacco Inflation decreased by 0.4 percent for the month of May 2022 from the 0.1 percent rise recorded for the month of April 2022.

### 03 Clothing and Footwear

The Monthly Inflation for Clothing and Footwear increased by 0.2 percent for the month of May 2022 from the 0.0 percent recorded in April 2022 . This was mainly due to Clothing Inflation that increased by 0.2 percent for the month of May 2022 from the 0.1 percent drop recorded in April 2022.

In addition, Footwear Inflation increased by 0.1 percent for the month of May 2022 from the 0.5 percent rise recorded in April 2022.

### 04 Housing, Water, Electricity, Gas and other Fuels

The Monthly Inflation for Housing, Water, Electricity, Gas & Other fuels decreased by 0.2 percent for the month of May 2022 from 2.1 percent rise recorded in April 2022. This was due to Electricity, Gas and Other Fuels Inflation that decreased by 1.5 percent for the month of May 2022 from the 2.4 percent rise recorded for the month of April 2022.

However, Actual Rentals for Housing Inflation increased by 0.6 percent for the month of May 2022 from the 0.1 percent drop recorded for the month of April 2022. In addition, Maintenance, Repair and Security of the Dwelling Inflation increased by 1.4 percent for the month of May 2022 from the 11.8 percent rise recorded for the month of April 2022. Water Supply and Miscellaneous Services Relating to the Dwelling Inflation increased by 0.1 percent for the month of May 2022 from 0.0 percent recorded in April 2022.



## **05 Furnishings, Household Equipment and Routine Household Maintenance**

The Monthly Inflation for Furnishings, Household Equipment & Routine Household Maintenance increased by 1.1 percent for the month of May 2022 from 2.8 percent rise recorded for the month of April 2022 . This was mainly due to Goods & Services for Routine Household Maintenance Inflation that increased by 2.0 percent for the month of May 2022 from the 4.9 percent rise recorded for the month of April 2022.

In addition, Glassware, Tableware and Household Utensils Inflation increased by 0.4 percent for the month of May 2022 from the 0.6 percent rise recorded for the month of April 2022. Furniture, Furnishings, and Loose Carpets Inflation increased by 0.2 percent for the month of May 2022 from the 0.1 percent recorded for the month of April 2022. Household Textiles Inflation increased by 0.1 percent for the month of May 2022 from the 0.3 percent rise recorded for the month of April 2022.

However, Tools and Equipment for House & Garden Inflation also decreased by 0.6 percent for the month of May 2022 from the 0.4 percent rise recorded for the month of April 2022. Household Appliances Inflation decreased by 0.2 percent for the month of May 2022 from the 0.4 percent rise recorded for the month of April 2022.

## **06 Health**

The Monthly Inflation for Health increased by 0.2 percent for the month of May 2022 from the 0.1 percent rise recorded for the month of April 2022 . This was mainly due to Inpatient Care Services Inflation that increased by 0.6 percent for the month of May 2022 from the 0.1 percent rise recorded for the month of April 2022. In addition, Outpatient Care Services Inflation increased by 0.5 percent for the month of May 2022 from the 0.2 percent rise recorded for the month of April 2022 . Other Health Services Inflation also increased by 0.2 percent for the month of May 2022 from the 0.4 percent rise recorded for the month of April 2022 .

However, Medicines and Health Products Inflation registered 0.0 percent for the month of May 2022 the same rate recorded for the month of April 2022.

## **07 Transport**

Transport Inflation increased by 3.0 percent for the month of May 2022 from the 1.2 percent rise recorded for the month of April 2022 . This was mainly due to Passenger Transport Services Inflation that increased by 4.0 percent for the month of May 2022 from the 1.4 percent rise recorded for the month of April 2022. In addition, Operation of Personal Transport Equipment Inflation also increased by 3.1 percent for the month of May 2022 from the 1.3 percent rise recorded during the month of April 2022.

However, Purchase of vehicles Inflation registered 0.0 percent for the month of May 2022 from the 0.4 percent rise recorded for the month of April 2022.

## **08 Information and Communication**

The Monthly Inflation for Information and Communication decreased by 0.1 percent for the month of May 2022 the same rate recorded for the month of April 2022. This was due to Information and Communication Services Inflation that decreased by 0.1 percent for the month of May 2022 from 0.0 percent recorded for the month of April 2022.

However, Information and Communication Equipment Inflation registered 0.0 percent for the month of May 2022 from the 0.2 percent drop recorded for the month of April 2022.

## **09 Recreation, Sport and Culture**

Monthly Recreation, Sport and Culture Inflation increased by 0.4 percent for the month of May 2022 from the 1.1 percent rise recorded during the month of April 2022 . This was mainly due to Newspapers, Books & Stationery Inflation that increased by 1.2 percent for the month of May 2022 from the 0.8 percent rise recorded for the month of April 2022 . In addition, Cultural Services Inflation that increased by 0.1 percent for the month of May 2022 from 1.6 percent rise recorded during the month of April 2022.

However, Gardens and Pets Inflation registered 0.0 percent for the month of May 2022 the same rate recorded during the month of April 2022. Package Holidays Inflation registered 0.0 percent for the month of May 2022 the same rate recorded during the month of April 2022 . Recreational Services Inflation registered 0.0 percent for the month of May 2022 the same rate recorded for the month of April 2022. Other Recreational Goods Inflation registered 0.0 percent for the month of May 2022 the same rate recorded for the month of April 2022.

## **10 Education Services**

Monthly Inflation for Education Services registered 0.0 percent for the month of May 2022 the same rate recorded for the month of April 2022. Early Childhood and Primary Education that registered 0.0 percent for the month of May 2022 the same rate recorded for the month of April 2022.

In addition, Secondary Education that registered 0.0 percent for the month of May 2022 the same rate recorded for the month of April 2022 . Post-secondary non-tertiary education Inflation registered 0.0 percent for the month of May 2022 the same rate recorded for the month of April 2022. Tertiary Education inflation registered 0.0 percent for the month of May 2022 the same rate recorded for the month of April 2022 . Education not Defined by level inflation registered 0.0 percent for the month of May 2022 the same rate recorded for the month of April 2022.

## **11 Restaurants and Accommodation Services**

The Monthly Inflation for Restaurants and Accommodation Services registered 0.0 percent for the month of May 2022 from the 0.6 percent rise recorded for the month of April 2022. This was due to Food and Beverage Serving Services Inflation that registered 0.0 percent for the month of May 2022 from the 0.9 percent rise recorded during the month of April 2022 . Accommodation Services Inflation increased by 0.2 percent for the month of May 2022 from the 0.3 percent drop recorded for the month of April 2022.

## **12 Insurance and Financial Services**

Insurance and Financial Services Inflation increased by 0.1 percent for the month of May 2022 from the 0.1 percent drop recorded for the month of April 2022 . This was due to Insurance Inflation that increased by 0.6 percent for the month of May 2022 from the 0.8 percent drop recorded for the month of April 2022.

However, Financial Services Inflation registered 0.0 percent for the month of May 2022 from the same rate recorded for the month of April 2022.

## **13 Personal Care, Social Protection and Miscellaneous Goods**

Personal Care, Social Protection and Miscellaneous Goods Inflation for the month of May 2022 increased by 1.1 percent from the 0.8 percent drop recorded for the month of April 2022. This was mainly due to Personal Care Inflation that increased by 1.5 percent for the month of May 2022 from the 0.4 percent rise recorded for the month of April 2022.

In addition, Personal Effects n.e.c Inflation increased by 0.5 percent during the month of May 2022 from 4.1 percent drop recorded for the month of April 2022.

However, Other services n.e.c Inflation registered 0.0 percent for the month of May 2022 from the 2.4 percent drop recorded for the month of April 2022 .Social Protection Inflation registered 0.0 percent for the month of May 2022 the same rate recorded for the month of April 2022.

**TABLE 6: UGANDA CONSUMER PRICE INDEX (CPI) AND INFLATION FOR CORE, FOOD CROPS, & EFU: (2016/17) = 100.**

GROUP	Core	Food Crops	EFU	Headline	Core	Food Crops	EFU	Headline	Core	Food Crops	EFU	Headline
Weights	839.62	95.10	65.28	1000.00	Monthly % Change				Annual % Change			
<b>Financial Years</b>												
2018/19	106.68	98.46	117.08	106.57					3.0	-5.0	8.8	2.6
2019/20	109.08	102.16	118.86	109.06					2.3	3.7	1.5	2.3
2020/21	112.89	97.80	117.74	111.77					3.5	-4.3	-0.9	2.5
<b>Calendar Years</b>												
2019	107.68	100.27	117.48	107.61					2.4	-1.4	3.0	2.1
2020	111.16	99.72	118.96	110.58					3.2	-0.5	1.3	2.8
2021	114.23	106.67	118.10	113.02					2.8	-0.9	-0.7	2.2
<b>2020</b>												
Jan	109.07	102.39	119.63	109.12	0.4	-0.1	-0.1	0.3	2.0	9.7	1.6	2.6
Feb	109.28	103.20	119.14	109.34	0.2	0.8	-0.4	0.2	2.5	9.5	1.3	3.0
Mar	109.41	100.77	118.92	109.21	0.1	-2.4	-0.2	-0.1	1.8	4.2	1.8	2.0
Apr	110.20	103.99	119.09	110.19	0.7	3.2	0.1	0.9	2.8	1.0	2.1	2.6
May	110.39	106.48	119.02	110.58	0.2	2.4	-0.1	0.4	2.9	0.3	2.3	2.7
Jun	111.39	101.13	119.56	110.95	0.9	-5.0	0.5	0.3	3.7	-0.7	5.1	3.4
Jul	111.86	95.37	118.75	110.74	0.4	-5.7	-0.7	-0.2	3.9	-3.2	2.8	3.2
Aug	112.02	96.72	118.62	111.00	0.1	1.4	-0.1	0.2	3.6	-1.9	1.8	3.0
Sep	112.36	97.20	118.73	111.34	0.3	0.5	0.1	0.3	3.7	-5.0	0.2	2.7
Oct	112.63	98.90	120.11	111.81	0.2	1.8	1.2	0.4	4.1	-4.0	-0.6	3.0
Nov	112.48	95.32	118.54	111.24	-0.1	-3.6	-1.3	-0.5	3.9	-7.4	-1.0	2.5
Dec	112.83	95.14	117.36	111.44	0.3	-0.2	-1.0	0.2	3.9	-7.2	-2.0	2.5
<b>2021</b>												
Jan	112.72	95.34	116.39	111.31	-0.1	0.2	-0.8	-0.1	3.4	-6.9	-2.7	2.0
Feb	112.98	98.02	117.35	111.85	0.2	2.8	0.8	0.5	3.4	-5.0	-1.5	2.3
Mar	113.16	100.47	116.53	112.17	0.2	2.5	-0.7	0.3	3.4	-0.3	-2.0	2.7
Apr	113.36	102.35	116.20	112.50	0.2	1.9	-0.3	0.3	2.9	-1.6	-2.4	2.1
May	113.78	100.43	116.29	112.68	0.4	-1.9	0.1	0.2	3.1	-5.7	-2.3	1.9
Jun	114.44	98.35	118.00	113.14	0.6	-2.1	1.5	0.4	2.7	-2.8	-1.3	2.0
Jul	114.66	96.19	117.68	113.10	0.2	-2.2	-0.3	0.0	2.5	0.9	-0.9	2.1
Aug	114.47	97.25	117.98	113.06	-0.2	1.1	0.3	0.0	2.2	0.5	-0.5	1.9
Sep	114.85	100.30	118.99	113.74	0.3	3.1	0.9	0.6	2.2	3.2	0.2	2.2
Oct	114.98	100.60	119.84	113.93	0.1	0.3	0.7	0.2	2.1	1.7	-0.2	1.9
Nov	115.35	98.73	120.96	114.13	0.3	-1.9	0.9	0.2	2.6	3.6	2.0	2.6
Dec	116.06	97.84	121.05	114.65	0.6	-0.9	0.1	0.5	2.9	2.8	3.2	2.9
<b>2022</b>												
Jan	115.30	98.88	123.92	114.30	-0.7	1.1	2.4	-0.3	2.3	3.7	6.5	2.7
Feb	116.52	98.68	125.61	115.42	1.1	-0.2	1.4	1.0	3.1	0.7	7.0	3.2
Mar	117.19	102.33	126.43	116.38	0.6	3.7	0.7	0.8	3.6	1.9	8.5	3.7
April	118.26	107.82	129.17	117.98	0.9	5.4	2.2	1.4	4.3	5.4	11.2	4.9
May	119.55	114.10	130.21	119.73	1.1	5.8	0.8	1.5	5.1	13.6	12.0	6.3

EFU = Energy Fuel and Utilities

**TABLE 7: ENERGY FUEL AND UTILITIES (EFU) INDEX, ANNUAL AND MONTHLY % CHANGES, (2016/17) = 100.**

	Weights	Dec-21	Jan-22	Feb-22	Mar-22	April-22	May-22
<b>Energy Fuel and Utilities (EFU)</b>	<b>65.28</b>	<b>121.05</b>	<b>123.92</b>	<b>125.61</b>	<b>126.43</b>	<b>129.17</b>	<b>130.21</b>
Diesel	2.89	131.44	135.24	140.24	144.74	157.68	181.66
Petrol	11.54	127.95	132.74	148.35	150.22	153.58	159.27
Electricity	12.26	114.11	114.11	114.09	114.09	114.09	114.09
Liquefied gas: propane	4.12	92.88	94.04	94.75	94.88	103.70	104.38
Kerosene/Paraffin	2.57	117.22	119.89	121.18	121.83	126.14	141.90
Firewood	5.27	126.79	124.62	133.97	129.82	133.14	116.29
Charcoal	10.03	143.18	136.46	142.02	145.38	149.16	146.98
Other solid fuels (ND)	0.28	186.75	186.75	186.75	186.75	186.75	186.75
Water charges - NWSC	12.80	112.93	112.93	112.93	112.93	112.93	112.93
Water Charges - Other Sources	3.52	102.74	101.81	100.37	101.78	101.78	101.78
<b>Liquid Energy Fuels (LEF)</b>	<b>21.13</b>	<b>123.97</b>	<b>130.93</b>	<b>133.48</b>	<b>135.22</b>	<b>141.07</b>	<b>149.52</b>
Monthly % Changes		3.1	5.6	1.9	1.3	4.3	6.0
Annual % Changes		15.7	22.6	25.2	26.4	30.3	34.9
<b>Energy Fuel and Utilities (EFU) -Annual % Change</b>		<b>3.2</b>	<b>6.5</b>	<b>7.0</b>	<b>8.5</b>	<b>11.2</b>	<b>12.0</b>
Diesel		20.7	23.6	26.0	29.1	38.0	54.0
Petrol		19.2	30.5	34.0	35.0	35.8	35.8
Electricity		-0.4	-0.4	-0.4	-0.4	-0.4	-0.4
Liquefied gas: propane		8.0	8.0	9.8	9.9	20.2	23.3
Kerosene/Paraffin		4.2	5.0	5.3	5.7	9.5	23.0
Firewood		-1.9	15.3	13.9	11.7	18.8	1.2
Charcoal		-6.5	-6.9	-6.7	-1.1	3.4	6.0
Other solid fuels (ND)		-4.5	-4.5	-4.5	-4.5	-4.5	0.0
Water charges - NWSC		-0.0	-0.0	-0.0	-0.0	-0.0	-0.0
Water Charges - Other Sources		0.9	0.0	-1.4	0.7	0.7	1.7
<b>EFU components Monthly % Change</b>		<b>0.1</b>	<b>2.4</b>	<b>1.4</b>	<b>0.7</b>	<b>2.2</b>	<b>0.8</b>
Diesel		2.9	1.7	2.0	3.2	8.9	15.2
Petrol		3.7	9.0	2.5	1.3	2.2	3.7
Electricity		0.0	-0.0	-0.0	0.0	0.0	0.0
Liquefied gas: propane		1.3	-0.2	1.0	0.1	9.3	0.7
Kerosene/Paraffin		2.3	0.9	0.2	0.5	3.5	12.5
Firewood		-1.7	5.0	2.4	-3.1	2.6	-12.7
Charcoal		-4.7	0.8	3.3	2.4	2.6	-1.5
Other solid fuels (ND)		0.0	0.0	0.0	0.0	0.0	0.0
Water charges - NWSC		0.0	0.0	0.0	0.0	0.0	0.0
Water Charges - Other Sources		2.0	-0.9	-1.4	1.4	0.0	0.0

*Note: Liquid Energy Fuels (LEF) is a component of Petrol, Diesel, Kerosene, and Liquefied gas.*

**TABLE 8: UGANDA ANNUAL INFLATION BY COICOP DIVISIONS (MAY 2021 – MAY 2022).**

Div.	PARTICULARS	CY	CY	FY	FY	May-21	Jun-21	Jul-21	Aug-21	Sep-21	Oct-21	Nov-21	Dec-21	Jan-22	Feb-22	Mar-22	Apr-22	May-22
		2020	2021	2019/20	2020/21													
	<b>Headline</b>	<b>2.8</b>	<b>2.2</b>	<b>2.3</b>	<b>2.5</b>	<b>1.9</b>	<b>2.0</b>	<b>2.1</b>	<b>1.9</b>	<b>2.2</b>	<b>1.9</b>	<b>2.6</b>	<b>2.9</b>	<b>2.7</b>	<b>3.2</b>	<b>3.7</b>	<b>4.9</b>	<b>6.3</b>
01	Food and Non-Alcoholic Beverages	2.5	0.5	4.1	-1.1	-3.5	-1.6	0.7	1.3	2.9	3.1	4.6	5.3	5.3	4.5	4.4	6.9	11.0
02	Alcoholic Beverages, Tobacco and Narcotics	1.0	1.4	0.9	1.8	1.8	1.6	1.3	1.0	0.9	-0.5	-0.3	1.2	1.2	1.0	1.1	1.5	2.3
03	Clothing and Footwear	2.2	1.4	3.6	1.5	1.3	1.1	1.2	1.4	1.0	2.2	1.9	0.8	1.7	2.5	3.2	2.9	3.1
04	Housing, Water, Electricity, Gas and Other Fuels	2.3	-0.8	2.4	0.0	-1.7	-1.5	-0.9	-0.7	-0.5	-0.9	0.1	0.5	1.1	1.1	1.9	4.5	4.4
05	Furnishings, Household Equipment and Routine Household	1.6	2.0	1.6	1.0	0.4	0.8	1.2	1.7	3.0	3.9	4.7	5.0	5.8	9.6	13.8	16.5	17.3
06	Health	3.8	5.2	3.5	4.2	5.4	5.0	5.0	5.1	5.5	5.5	5.6	5.4	5.8	2.2	2.1	1.9	2.1
07	Transport	9.0	12.4	2.4	18.0	20.9	15.9	10.7	7.3	4.8	2.4	3.5	4.2	0.2	0.6	1.8	2.3	4.4
08	Information and Communication	-5.1	-0.0	-11.6	1.1	1.0	0.9	-1.4	-1.7	-0.7	-0.9	-1.0	-1.1	-0.8	-1.4	-2.4	-2.4	-2.7
09	Recreation, Sport and Culture	2.5	0.2	2.0	1.7	0.7	0.8	0.7	-0.3	-0.4	-0.4	-0.8	-0.4	0.1	0.6	1.6	2.9	3.3
10	Education Services	1.4	0.4	2.3	0.4	0.6	0.6	0.6	0.6	0.6	0.6	0.6	0.6	0.6	9.0	9.0	9.0	8.4
11	Restaurants and Accommodation Services	1.0	0.9	1.8	0.3	0.7	0.2	1.3	1.5	1.6	1.4	2.5	1.7	2.3	3.2	4.4	5.0	4.3
12	Insurance and Financial Services	3.9	0.1	2.3	-0.0	-0.7	-0.7	0.7	0.8	2.2	2.5	2.5	2.5	2.5	2.5	2.5	2.4	2.8
13	Personal Care, Social Protection and Miscellaneous Goods	3.4	2.3	5.1	2.3	2.3	1.9	2.2	1.8	2.9	2.9	2.3	2.8	4.0	4.6	4.6	3.1	3.9

CY = Calendar Year

FY = Financial Year

Source: Uganda Bureau of Statistics

**TABLE 9: UGANDA MONTHLY INFLATION BY COICOP DIVISIONS (MAY 2021 – MAY 2022).**

Div.	PARTICULARS	May-21	Jun-21	Jul-21	Aug-21	Sep-21	Oct-21	Nov-21	Dec-21	Jan-22	Feb-22	Mar-22	Apr-22	May-22
	<b>Headline</b>	<b>0.2</b>	<b>0.4</b>	<b>0.0</b>	<b>0.0</b>	<b>0.6</b>	<b>0.2</b>	<b>0.2</b>	<b>0.5</b>	<b>-0.3</b>	<b>1.0</b>	<b>0.8</b>	<b>1.4</b>	<b>1.5</b>
01	Food and Non-Alcoholic Beverages	-0.4	-0.8	-0.1	1.1	1.2	0.4	-0.3	0.4	0.4	0.4	1.4	3.1	3.5
02	Alcoholic Beverages, Tobacco and Narcotics	0.2	-0.3	0.0	-0.5	0.3	-0.3	0.5	1.4	-0.2	0.3	-0.2	0.3	1.0
03	Clothing and Footwear	0.0	0.1	-0.0	0.2	0.4	0.5	-0.4	0.5	0.6	0.6	0.3	0.0	0.2
04	Housing, Water, Electricity, Gas and Other Fuels	-0.1	0.6	-0.0	-0.2	0.4	0.5	0.2	-0.5	0.3	0.6	0.5	2.1	-0.2
05	Furnishings, Household Equipment and Routine Household	0.4	0.4	0.3	0.7	0.8	1.1	0.4	0.6	0.6	3.7	3.8	2.8	1.1
06	Health	0.0	0.0	0.3	0.1	0.7	-0.0	0.8	-0.1	0.4	0.3	-0.6	0.1	0.2
07	Transport	1.0	4.6	-0.3	-2.1	0.1	-0.4	0.9	2.4	-5.3	-0.0	0.4	1.2	3.0
08	Information and Communication	0.2	0.1	-2.1	-0.0	1.0	0.0	-0.0	-0.0	0.1	-0.7	-0.8	-0.1	-0.1
09	Recreation, Sport and Culture	0.0	0.2	-0.3	-0.8	0.0	0.1	-0.1	0.5	0.5	0.1	1.6	1.1	0.4
10	Education Services	0.6	0.0	0.0	0.0	0.0	0.0	0.0	0.0	0.0	8.4	-0.0	-0.0	0.0
11	Restaurants and Accommodation Services	0.7	-0.6	0.6	0.1	0.0	0.0	0.5	-0.8	1.0	1.2	1.6	0.6	0.0
12	Insurance and Financial Services	-0.3	0.0	1.4	0.1	1.3	0.0	0.0	0.0	0.0	0.0	0.0	-0.1	0.1
13	Personal Care, Social Protection and Miscellaneous Goods	0.3	-0.2	0.5	-0.0	1.1	-0.1	0.2	0.5	1.3	0.4	0.1	-0.8	1.1

Source: Uganda Bureau of Statistics

**TABLE 10: UGANDA CONSUMER PRICE INDEX (CPI) BY COICOP DIVISION: (2016/17) = 100.**

Div.	PARTICULARS	Weights	CY	CY	FY	FY	May-21	Jun-21	Jul-21	Aug-21	Sep-21	Oct-21	Nov-21	Dec-21	Jan-22	Feb-22	Mar-22	Apr-22	May-22
			2020	2021	2019/20	2020/21													
	<b>Headline (all items index)</b>	<b>1,000.00</b>	<b>110.58</b>	<b>113.02</b>	<b>109.06</b>	<b>111.77</b>	<b>112.67</b>	<b>113.14</b>	<b>113.10</b>	<b>113.06</b>	<b>113.74</b>	<b>113.93</b>	<b>114.13</b>	<b>114.65</b>	<b>114.30</b>	<b>115.42</b>	<b>116.38</b>	<b>117.98</b>	<b>119.73</b>
01	Food and Non-Alcoholic Beverages	270.54	106.92	107.44	107.00	105.87	107.43	106.58	106.43	107.57	108.83	109.23	108.96	109.35	109.83	110.28	111.85	115.28	119.28
02	Alcoholic Beverages, Tobacco and Narcotics	38.80	105.90	107.33	105.09	107.01	107.52	107.19	107.20	106.71	106.98	106.65	107.21	108.72	108.53	108.84	108.61	108.91	109.96
03	Clothing and Footwear	69.77	113.40	115.01	112.54	114.21	114.64	114.70	114.67	114.92	115.39	115.95	115.49	116.03	116.75	117.48	117.88	117.90	118.14
04	Housing, Water, Electricity, Gas and Other Fuels	104.16	112.31	111.42	111.66	111.64	110.70	111.34	111.32	111.13	111.56	112.12	112.40	111.82	112.21	112.87	113.39	115.81	115.62
05	Furnishings, Household Equipment and Routine Household	48.37	108.46	110.60	107.75	108.84	109.44	109.84	110.11	110.86	111.78	112.99	113.43	114.13	114.79	119.02	123.54	126.98	128.35
06	Health	47.47	110.48	116.19	108.70	113.22	115.92	115.95	116.30	116.37	117.14	117.12	118.10	117.96	118.39	118.72	117.98	118.11	118.39
07	Transport	104.55	128.52	143.70	118.57	139.94	141.42	147.95	147.58	144.48	144.59	144.01	145.37	148.91	141.04	141.03	141.56	143.26	147.60
08	Information and Communication	44.32	94.44	94.40	93.88	94.93	95.16	95.21	93.17	93.14	94.10	94.11	94.09	94.08	94.14	93.50	92.71	92.65	92.56
09	Recreation, Sport and Culture	49.85	108.79	109.04	107.41	109.19	109.44	109.62	109.27	108.38	108.43	108.57	108.43	108.97	109.48	109.58	111.38	112.56	113.05
10	Education Services	57.96	108.83	109.29	108.50	108.96	109.50	109.51	109.51	109.51	109.51	109.51	109.51	109.51	109.51	118.67	118.67	118.67	118.67
11	Restaurants and Accommodation Services	87.38	108.19	109.20	108.00	108.30	109.58	108.93	109.55	109.62	109.65	109.67	110.24	109.35	110.44	111.78	113.60	114.24	114.30
12	Insurance and Financial Services	22.80	115.04	115.10	114.09	114.03	113.62	113.62	115.22	115.31	116.85	116.86	116.86	116.86	116.86	116.87	116.87	116.78	116.84
13	Personal Care, Social Protection and Miscellaneous Goods	54.04	111.31	113.88	109.97	112.49	113.57	113.37	113.90	113.87	115.07	114.98	115.15	115.72	117.21	117.65	117.72	116.77	118.03

CY = Calendar Year

FY = Financial Year

Source: Uganda Bureau of Statistics



**TABLE 11: UGANDA CONSUMER PRICE INDEX (CPI) AND INFLATION FOR CORE & NON CORE: (2016/17) = 100.**

GROUP	Weights	CY	CY	FY	FY													
		2020	2021	2019/20	2020/21	May-21	Jun-21	Jul-21	Aug-21	Sep-21	Oct-21	Nov-21	Dec-21	Jan-22	Feb-22	Mar-22	Apr-22	May-22
<b>Headline Index</b>	<b>1000.00</b>	<b>110.58</b>	<b>113.02</b>	<b>109.06</b>	<b>111.77</b>	<b>112.67</b>	<b>113.14</b>	<b>113.10</b>	<b>113.06</b>	<b>113.74</b>	<b>113.93</b>	<b>114.13</b>	<b>114.65</b>	<b>114.30</b>	<b>115.42</b>	<b>116.38</b>	<b>117.98</b>	<b>119.73</b>
<b>Core</b>	<b>839.62</b>	111.16	114.23	109.08	112.89	113.77	114.44	114.66	114.47	114.85	114.98	115.35	116.06	115.30	116.52	117.19	118.26	119.55
<b>Non - Core</b>	<b>160.38</b>	107.55	106.67	108.95	105.92	106.89	106.35	104.94	105.69	107.91	108.43	107.78	107.29	109.07	109.64	112.14	116.51	120.66
<b>Monthly % Change</b>																		
<b>Headline</b>						<b>0.2</b>	<b>0.4</b>	<b>-0.0</b>	<b>-0.0</b>	<b>0.6</b>	<b>0.2</b>	<b>0.2</b>	<b>0.5</b>	<b>-0.3</b>	<b>1.0</b>	<b>0.8</b>	<b>1.4</b>	<b>1.5</b>
<b>Core</b>						0.4	0.6	0.2	-0.2	0.3	0.1	0.3	0.6	-0.7	1.1	0.6	0.9	1.1
<b>Non - Core</b>						-1.0	-0.5	-1.3	0.7	2.1	0.5	-0.6	-0.5	1.7	0.5	2.3	3.9	3.6
<b>Annual % Change</b>																		
<b>Headline</b>		<b>2.8</b>	<b>2.2</b>	<b>2.3</b>	<b>2.5</b>	<b>1.9</b>	<b>2.0</b>	<b>2.1</b>	<b>1.9</b>	<b>2.2</b>	<b>1.9</b>	<b>2.6</b>	<b>2.9</b>	<b>2.7</b>	<b>3.2</b>	<b>3.7</b>	<b>4.9</b>	<b>6.3</b>
<b>Core</b>		3.2	2.9	2.3	3.5	3.1	2.7	2.5	2.2	2.2	2.1	2.6	2.9	2.3	3.1	3.6	4.3	5.1
<b>Non - Core</b>		0.3	-1.1	2.7	-2.8	-4.2	-2.1	0.0	0.1	1.8	0.8	2.9	3.0	5.0	3.5	4.8	7.9	12.9

CY = Calendar Year  
FY = Financial Year  
Source: Uganda Bureau of Statistics

**TABLE 12: UGANDA CONSUMER PRICE INDEX (CPI) AND INFLATION FOR FOOD & NON FOOD: (2016/17) = 100.**

GROUP	Weights	CY		FY														
		2020	2021	2019/20	2020/21	May-21	Jun-21	Jul-21	Aug-21	Sep-21	Oct-21	Nov-21	Dec-21	Jan-22	Feb-22	Mar-22	Apr-22	May-22
<b>Headline Index</b>	<b>1000.00</b>	<b>110.58</b>	<b>113.02</b>	<b>109.06</b>	<b>111.77</b>	<b>112.67</b>	<b>113.14</b>	<b>113.10</b>	<b>113.06</b>	<b>113.74</b>	<b>113.93</b>	<b>114.13</b>	<b>114.65</b>	<b>114.30</b>	<b>115.42</b>	<b>116.38</b>	<b>117.98</b>	<b>119.73</b>
<b>Food</b>	<b>254.24</b>	107.05	107.51	107.12	105.90	107.48	106.56	106.44	107.64	108.97	109.41	109.11	109.50	110.07	110.52	112.17	115.79	120.03
<b>Non - Food</b>	<b>745.76</b>	111.78	114.90	109.72	113.77	114.44	115.39	115.37	114.91	115.36	115.47	115.85	116.41	115.74	117.09	117.81	118.72	119.62
<b>Monthly % Change</b>																		
<b>Headline</b>						<b>0.2</b>	<b>0.4</b>	<b>-0.0</b>	<b>-0.0</b>	<b>0.6</b>	<b>0.2</b>	<b>0.2</b>	<b>0.5</b>	<b>-0.3</b>	<b>1.0</b>	<b>0.8</b>	<b>1.4</b>	<b>1.5</b>
<b>Food</b>						-0.5	-0.9	-0.1	1.1	1.2	0.4	-0.3	0.4	0.5	0.4	1.5	3.2	3.7
<b>Non - Food</b>						0.4	0.8	-0.0	-0.4	0.4	0.1	0.3	0.5	-0.6	1.2	0.6	0.8	0.8
<b>Annual % Change</b>																		
<b>Headline</b>		<b>2.8</b>	<b>2.2</b>	<b>2.3</b>	<b>2.5</b>	<b>1.9</b>	<b>2.0</b>	<b>2.1</b>	<b>1.9</b>	<b>2.2</b>	<b>1.9</b>	<b>2.6</b>	<b>2.9</b>	<b>2.7</b>	<b>3.2</b>	<b>3.7</b>	<b>4.9</b>	<b>6.3</b>
<b>Food</b>		2.8	0.5	4.3	-1.1	-3.8	-1.8	0.6	1.3	3.0	3.2	4.8	5.5	5.6	4.8	4.6	7.2	11.7
<b>Non - Food</b>		2.8	2.8	1.7	3.7	3.9	3.2	2.6	2.0	1.9	1.5	1.9	2.1	1.8	2.7	3.5	4.1	4.5

CY = Calendar Year  
FY = Financial Year  
Source: Uganda Bureau of Statistics

**TABLE 13: UGANDA CONSUMER PRICE INDEX (CPI) AND INFLATION FOR FOOD CROPS, OTHER GOODS, SERVICES AND ENERGY FUEL & UTILITIES: (2016/17) = 100.**

Group	Weights	CY		FY														
		2020	2021	2019/20	2020/21	May-21	Jun-21	Jul-21	Aug-21	Sep-21	Oct-21	Nov-21	Dec-21	Jan-22	Feb-22	Mar-22	Apr-22	May-22
<b>Headline Index</b>	<b>1000.00</b>	<b>110.58</b>	<b>113.02</b>	<b>109.06</b>	<b>111.77</b>	<b>112.67</b>	<b>113.14</b>	<b>113.10</b>	<b>113.06</b>	<b>113.74</b>	<b>113.93</b>	<b>114.13</b>	<b>114.65</b>	<b>114.30</b>	<b>115.42</b>	<b>116.38</b>	<b>117.98</b>	<b>119.73</b>
<b>Other Goods</b>	<b>455.51</b>	111.28	113.22	104.08	111.72	112.60	112.50	113.00	113.65	114.23	114.54	114.91	115.76	116.19	117.33	118.13	119.74	121.34
<b>Services</b>	<b>384.11</b>	111.01	115.44	104.19	114.27	115.16	116.74	116.62	115.45	115.58	115.50	115.87	116.42	114.25	115.57	116.07	116.51	117.42
<b>Food Crops and Related Items</b>	<b>95.10</b>	99.72	98.82	102.16	97.80	100.44	98.35	96.19	97.25	100.30	100.60	98.73	97.84	98.88	98.68	102.33	107.82	114.10
<b>Energy Fuel and Utilities</b>	<b>65.28</b>	118.96	118.10	118.86	117.74	116.29	118.00	117.68	117.98	118.99	119.84	120.96	121.05	123.92	125.61	126.43	129.17	130.21
<b>Monthly % Change</b>																		
<b>Headline</b>						<b>0.2</b>	<b>0.4</b>	<b>-0.0</b>	<b>-0.0</b>	<b>0.6</b>	<b>0.2</b>	<b>0.2</b>	<b>0.5</b>	<b>-0.3</b>	<b>1.0</b>	<b>0.8</b>	<b>1.4</b>	<b>1.5</b>
<b>Other Goods</b>						0.2	-0.1	0.4	0.6	0.5	0.3	0.3	0.7	0.4	1.0	0.7	1.4	1.3
<b>Services</b>						0.5	1.4	-0.1	-1.0	0.1	-0.1	0.3	0.5	-1.9	1.2	0.4	0.4	0.8
<b>Food Crops and Related Items</b>						-1.9	-2.1	-2.2	1.1	3.1	0.3	-1.9	-0.9	1.1	-0.2	3.7	5.4	5.8
<b>Energy Fuel and Utilities</b>						0.1	1.5	-0.3	0.3	0.9	0.7	0.9	0.1	2.4	1.4	0.7	2.2	0.8
<b>Annual % Change</b>																		
<b>Headline</b>		<b>2.8</b>	<b>2.2</b>	<b>2.3</b>	<b>2.5</b>	<b>1.9</b>	<b>2.0</b>	<b>2.1</b>	<b>1.9</b>	<b>2.2</b>	<b>1.9</b>	<b>2.6</b>	<b>2.9</b>	<b>2.7</b>	<b>3.2</b>	<b>3.7</b>	<b>4.9</b>	<b>6.3</b>
<b>Other Goods</b>		3.0	1.7	0.1	1.4	0.1	0.6	1.3	1.9	2.5	3.0	3.5	4.0	4.3	5.1	5.4	6.6	7.8
<b>Services</b>		3.5	4.0	0.4	6.0	6.7	5.3	4.0	2.5	1.8	1.1	1.5	1.5	0.0	0.8	1.4	1.7	2.0
<b>Food Crops and Related Items</b>		-0.4	-0.8	3.7	-4.3	-5.7	-2.8	0.9	0.5	3.2	1.7	3.6	2.8	3.7	0.7	1.9	5.4	13.6
<b>Energy Fuel and Utilities</b>		1.3	-0.7	1.5	-1.0	-2.3	-1.3	-0.9	-0.5	0.2	-0.2	2.0	3.2	6.5	7.0	8.5	11.2	12.0

CY = Calendar Year  
FY = Financial Year  
Source: Uganda Bureau of Statistics

**TABLE 14: UGANDA ANNUAL AND MONTHLY INFLATION BY INCOME GROUPS AND GEOGRAPHICAL AREAS :**

Basket	CY 2020	CY 2021	FY 2019/20	FY 2020/21	May-21	Jun-21	Jul-21	Aug-21	Sep-21	Oct-21	Nov-21	Dec-21	Jan-22	Feb-22	Mar-22	Apr-22	May-22
<b>Annual % Change</b>																	
<b>Headline</b>	<b>2.8</b>	<b>2.2</b>	<b>2.3</b>	<b>2.5</b>	<b>1.9</b>	<b>2.0</b>	<b>2.1</b>	<b>1.9</b>	<b>2.2</b>	<b>1.9</b>	<b>2.6</b>	<b>2.9</b>	<b>2.7</b>	<b>3.2</b>	<b>3.7</b>	<b>4.9</b>	<b>6.3</b>
Kampala High Income	2.3	2.9	2.0	2.8	3.1	3.0	2.6	2.8	3.1	2.6	3.0	3.3	3.1	4.2	4.0	4.8	5.1
Kampala Middle Income	2.2	1.9	1.9	2.1	1.6	1.2	1.9	0.7	1.4	1.0	2.7	2.1	1.0	2.0	3.0	4.4	6.1
Kampala Low Income	2.9	1.3	2.3	2.2	1.1	0.6	1.1	0.3	0.2	0.2	2.2	3.1	1.6	1.9	2.4	4.5	7.1
Masaka	4.1	2.5	3.5	3.3	1.3	1.4	2.5	2.5	2.4	2.3	2.9	2.9	2.9	3.5	3.5	4.5	6.7
Mbarara	2.5	2.0	2.1	2.8	2.7	3.9	2.2	0.5	0.6	1.2	1.2	1.9	2.5	1.9	3.6	4.2	5.8
Jinja	2.8	1.8	1.6	2.3	0.9	1.1	1.8	1.4	1.9	1.8	1.8	2.6	1.6	1.6	2.6	3.8	5.6
Mbale	2.3	1.8	2.1	1.5	0.3	0.9	1.7	1.7	2.1	2.0	3.5	3.8	3.9	3.9	4.8	5.7	8.5
Gulu	4.3	1.9	4.2	2.7	0.9	1.5	1.8	2.5	2.5	1.3	2.3	3.4	4.5	4.4	5.5	6.9	8.4
Arua	3.9	2.2	3.2	2.6	-0.6	2.2	2.5	2.9	1.7	2.6	3.1	3.6	4.5	3.8	4.4	5.0	7.1
Fortportal	3.5	1.4	2.9	1.8	0.8	0.3	1.7	1.4	2.6	2.5	2.2	2.3	2.5	2.6	3.7	5.8	7.8
<b>Monthly % Change</b>																	
<b>Headline</b>					<b>0.2</b>	<b>0.4</b>	<b>-0.0</b>	<b>-0.0</b>	<b>0.6</b>	<b>0.2</b>	<b>0.2</b>	<b>0.5</b>	<b>-0.3</b>	<b>1.0</b>	<b>0.8</b>	<b>1.4</b>	<b>1.5</b>
Kampala High Income					0.7	0.2	0.1	0.0	0.6	-0.1	0.3	0.8	-0.4	1.4	0.3	0.8	1.0
Kampala Middle Income					0.2	0.1	0.0	-0.5	0.6	-0.1	0.8	0.4	-1.1	1.2	1.1	1.6	1.8
Kampala Low Income					0.0	0.8	-0.6	-0.6	0.5	0.3	0.9	1.2	-1.8	0.9	0.7	2.1	2.4
Masaka					-0.6	0.5	0.5	0.9	0.5	0.2	-0.1	-0.1	-0.0	0.7	0.6	1.5	1.5
Mbarara					-0.3	1.3	-0.4	-0.7	0.7	0.5	-0.6	0.5	0.3	0.4	1.7	0.8	1.3
Jinja					-0.6	0.7	-0.5	-0.3	0.3	-0.0	0.2	0.2	-0.1	0.0	1.6	2.3	1.2
Mbale					-0.7	1.1	-0.5	0.2	0.3	0.6	0.1	-0.1	0.8	0.7	1.4	1.5	2.0
Gulu					0.2	-0.2	0.7	0.8	1.6	-0.3	0.1	0.2	0.0	0.7	1.1	1.7	1.6
Arua					-0.8	0.9	-0.1	0.5	-1.1	1.5	-0.3	0.1	0.8	1.4	0.1	1.8	1.1
Fortportal					0.5	0.3	-0.1	0.0	0.9	1.1	-0.8	-0.1	0.2	0.8	0.7	2.1	2.4

CY = Calendar Year

FY = Financial Year

Source: Uganda Bureau of Statistics

**TABLE 15: UGANDA CONSUMER PRICE INDEX (CPI) BY INCOME GROUPS AND GEOGRAPHICAL AREAS : (2016/17) = 100.**

Basket	Weights	CY	CY	FY	FY	May-21	Jun-21	Jul-21	Aug-21	Sep-21	Oct-21	Nov-21	Dec-21	Jan-22	Feb-22	Mar-22	Apr-22	May-22
		2020	2021	2019/20	2020/21													
<b>Headline</b>	<b>1,000.00</b>	<b>110.58</b>	<b>113.02</b>	<b>109.06</b>	<b>111.77</b>	<b>112.67</b>	<b>113.14</b>	<b>113.10</b>	<b>113.06</b>	<b>113.74</b>	<b>113.93</b>	<b>114.13</b>	<b>114.65</b>	<b>114.30</b>	<b>115.42</b>	<b>116.38</b>	<b>117.98</b>	<b>119.73</b>
<b>Kampala High Income</b>	<b>350.61</b>	110.71	113.91	109.27	112.30	113.79	114.04	114.11	114.16	114.79	114.71	115.08	115.96	115.47	117.05	117.46	118.43	119.62
<b>Kampala Middle Income</b>	<b>147.09</b>	108.82	110.88	107.67	109.99	110.84	110.91	110.97	110.40	111.11	110.96	111.83	112.31	111.10	112.44	113.67	115.53	117.61
<b>Kampala Low Income</b>	<b>60.64</b>	111.12	112.56	109.55	111.90	112.21	113.10	112.39	111.73	112.34	112.71	113.70	115.02	112.96	114.01	114.83	117.28	120.14
<b>Masaka</b>	<b>58.22</b>	111.74	114.49	109.45	113.03	113.28	113.81	114.42	115.40	115.97	116.18	116.09	115.92	115.88	116.66	117.42	119.12	120.89
<b>Mbarara</b>	<b>87.02</b>	109.99	112.19	108.41	111.48	111.58	113.08	112.58	111.84	112.60	113.19	112.49	113.03	113.37	113.78	115.68	116.62	118.10
<b>Jinja</b>	<b>61.44</b>	109.49	111.47	107.91	110.44	111.47	112.26	111.67	111.36	111.67	111.67	111.84	112.09	111.98	111.98	113.81	116.40	117.74
<b>Mbale</b>	<b>61.82</b>	108.93	110.84	107.92	109.51	110.11	111.29	110.77	111.04	111.41	112.05	112.14	112.08	112.94	113.78	115.41	117.18	119.51
<b>Gulu</b>	<b>68.87</b>	113.99	116.10	111.75	114.76	115.14	114.95	115.72	116.61	118.44	118.13	118.31	118.57	118.61	119.44	120.79	122.82	124.76
<b>Arua</b>	<b>27.51</b>	112.13	114.59	110.24	113.05	113.96	115.04	114.98	115.50	114.27	115.96	115.63	115.76	116.64	118.32	118.49	120.64	122.01
<b>Fortportal</b>	<b>76.77</b>	111.32	112.94	109.81	111.75	112.54	112.85	112.76	112.78	113.76	114.99	114.12	113.97	114.23	115.12	115.98	118.44	121.33

CY = Calendar Year

FY = Financial Year

Source: Uganda Bureau of Statistics