



PRESS RELEASE

UGANDA BUREAU OF STATISTICS



CONSTRUCTION SECTOR INDICES AND INFLATION

MAY 2022

1.0 Annual Headline Inflation

The Inflation as measured by the Construction Sector Index for Uganda for the 12 months to May 2022 for inputs of the construction sector (*covering material prices, wage rates & equipment hire rates*) increased to 5.0 percent, up from 4.9 percent increase registered in April 2022 as shown in Table 1. This was attributed to 3.0 percent increase in inputs for Non - Residential Buildings compared to 2.8 percent increase registered in April 2022 and 9.2 percent increase in inputs for Civil Works compared to 9.3 percent increase registered in April 2022.

Table 1: Overall Construction Sector Index and Inflation

Month	Overall CSI	Inflation
May 2022	258.7	5.0
April 2022	258.5	4.9
March 2022	253.6	4.0
February 2022	249.1	2.3
January 2022	247.5	1.7
December 2021	247.8	2.0
November 2021	247.2	1.9
October 2021	247.1	1.8
September 2021	247.7	3.6
August 2021	246.7	3.3
July 2021	246.7	3.9
June 2021	246.6	3.7
May 2021	246.4	3.3

Aliziki K. Lubega

FOR: EXECUTIVE DIRECTOR

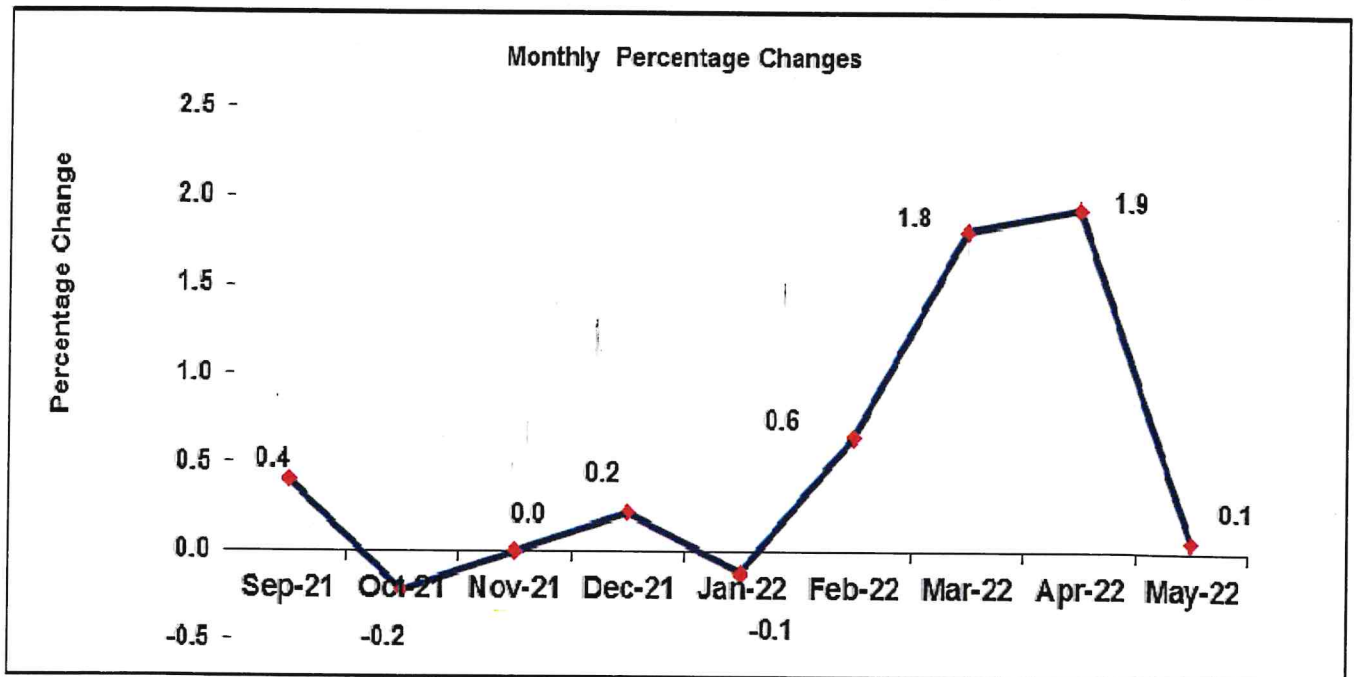
2.0 Monthly Inflation

On a month to month basis, the Inflation of inputs into the Construction Sector rose by 0.1 percent in the month of May 2022 compared to 1.9 percent rise registered in the month of April 2022, Figure 2.

This was mainly due to 0.5 percent rise in Inflation of inputs for Civil Works compared to 3.6 percent rise registered in April 2022.

The Monthly Inflation for Material inputs, Equipment hire and Wage Rates that showed an increasing trend in May 2022 were Diesel which increased by 14.6 percent, Lime 0.31 percent, Electrical Wires & Cables 0.6 percent, Wage rates 3.9 percent and Roofing Sheets by 0.1 percent.

Fig 1: Monthly Price Changes at the Whole Construction Sector Index, Sept 2021 to May 2022



Annual Percentage changes in Construction Price Index, May 2021 to May 2022

Sector	Weights	May-21	Jun-21	Jul-21	Aug-21	Sep-21	Oct-21	Nov-21	Dec-21	Jan-22	Feb-22	Mar-22	Apr-22	May-22
Whole sector	100	3.3	3.7	3.9	3.3	3.6	1.8	1.9	2.0	1.7	2.3	4.0	4.9	5.0
All buildings Total	80	3.3	3.8	3.9	3.2	3.5	1.5	1.5	1.5	1.2	1.9	3.4	3.9	4.0
Residential buildings	30	3.8	4.5	4.6	3.7	4.0	1.8	1.9	1.6	1.4	2.4	4.0	5.7	5.7
Formal	15	4.3	4.8	5.2	4.7	4.6	1.9	1.8	1.7	1.3	1.4	4.4	4.1	4.1
Own-account	15	3.4	4.2	3.9	2.6	3.5	1.7	1.9	1.5	1.6	3.5	3.6	7.4	7.3
Non-res buildings	50	2.9	3.3	3.5	2.9	3.1	1.4	1.3	1.4	1.0	1.6	3.0	2.8	3.0
Civil works	20	3.3	3.7	3.8	4.0	4.4	3.0	3.5	4.4	3.8	3.7	6.5	9.3	9.2
Roads paved	10	2.7	3.0	3.2	3.4	4.0	2.4	3.0	3.7	3.4	3.7	6.1	8.7	8.6
Roads gravel	5	3.3	3.7	3.5	4.0	5.6	5.0	5.7	8.8	8.3	8.9	12.1	18.6	18.2
Water projects	5	4.7	5.1	5.4	5.1	4.2	2.3	2.1	1.3	0.5	-1.2	1.8	1.6	1.6

Monthly Percentage changes in Construction Price Index, May 2021 to May 2022

Sector	Weights	May-21	Jun-21	Jul-21	Aug-21	Sep-21	Oct-21	Nov-21	Dec-21	Jan-22	Feb-22	Mar-22	Apr-22	May-22
Whole sector	100	0.0	0.1	0.1	0.0	0.4	-0.2	0.0	0.2	-0.1	0.6	1.8	1.9	0.1
All buildings Total	80	-0.1	0.1	0.1	-0.1	0.4	-0.2	-0.1	0.0	-0.1	0.8	1.6	1.5	0.0
Residential buildings	30	0.0	0.2	0.0	-0.2	0.4	-0.2	0.0	0.0	0.0	1.0	1.8	2.6	0.0
Formal	15	-0.1	0.0	0.0	-0.1	0.3	-0.7	-0.1	0.0	0.1	0.4	3.3	0.9	-0.1
Own-account	15	0.2	0.4	-0.1	-0.3	0.5	0.3	0.1	0.1	-0.1	1.6	0.3	4.3	0.1
Non-res buildings	50	-0.2	0.0	0.1	-0.1	0.3	-0.2	-0.1	0.0	-0.1	0.7	1.4	0.9	0.0
Civil works	20	0.6	0.1	0.1	0.4	0.6	-0.2	0.4	1.0	-0.3	-0.1	2.8	3.6	0.5
Roads paved	10	0.5	0.1	0.1	0.3	0.5	-0.3	0.4	1.0	-0.3	0.2	2.5	3.3	0.4
Roads gravel	5	1.3	0.3	0.4	0.9	1.1	0.3	0.9	2.2	-0.7	0.6	3.1	7.0	0.9
Water projects	5	0.0	0.0	0.0	0.0	0.1	-0.6	-0.1	0.0	0.0	-1.4	3.2	0.5	0.0

Statistical Release Table A
Construction sector price indices

Jan-Mar 2006 = 100

	Whole sector		All buildings		Residential buildings					
					Total		Formal		Own-account	
	2021	2022	2021	2022	2021	2022	2021	2022	2021	2022
Year	246.13		242.44		221.34		255.64		187.51	
Q1	243.63	250.06	240.37	245.55	219.25	225.04	253.24	259.24	185.72	191.14
Q2	246.47		243.02		221.86		256.82		187.51	
Q3	247.04		243.23		222.13		256.94		187.88	
Q4	247.39		243.12		222.12		255.54		188.91	
Jan	243.37	247.49	240.09	242.95	219.05	222.22	252.50	255.72	185.92	188.94
Feb	243.60	249.09	240.33	244.93	219.10	224.44	253.30	256.82	185.43	191.92
Mar	243.93	253.59	240.67	248.78	219.60	228.46	253.92	265.17	185.82	192.56
Apr	246.44	258.49	243.22	252.60	221.69	234.41	257.06	267.60	187.05	200.90
May	246.41	258.65	242.86	252.52	221.74	234.37	256.70	267.32	187.41	201.05
Jun	246.57		242.99		222.13		256.69		188.07	
Jul	246.74		243.11		222.09		256.74		187.96	
Aug	246.70		242.85		221.70		256.60		187.40	
Sep	247.69		243.73		222.61		257.49		188.29	
Oct	247.14		243.19		222.14		255.76		188.77	
Nov	247.24		243.07		222.06		255.41		188.90	
Dec	247.78		243.12		222.17		255.46		189.05	

	Non-res buildings		Civil works		Roads paved		Roads gravel		Water projects	
	2021	2022	2021	2022	2021	2022	2021	2022	2021	2022
Year	255.00		267.53		279.27		280.10		237.93	
Q1	252.96	257.71	262.95	275.30	274.98	287.03	270.99	297.47	236.70	237.54
Q2	255.63		266.70		278.62		276.91		238.82	
Q3	255.79		268.98		280.64		282.34		238.86	
Q4	255.63		271.48		282.84		290.15		237.34	
Jan	252.64	255.27	262.75	272.86	274.97	284.22	270.88	293.32	236.08	237.21
Feb	253.00	257.08	262.89	272.72	274.86	284.92	270.93	295.02	236.75	233.99
Mar	253.23	260.79	263.21	280.33	275.11	291.93	271.16	304.09	237.26	241.43
Apr	256.07	263.16	265.61	290.41	277.61	301.67	274.34	325.24	238.85	242.62
May	255.44	263.05	267.08	291.77	278.96	302.99	277.82	328.29	238.81	242.72
Jun	255.39		267.41		279.29		278.57		238.79	
Jul	255.62		267.79		279.56		279.62		238.80	
Aug	255.46		268.79		280.42		282.10		238.79	
Sep	256.30		270.35		281.94		285.30		239.00	
Oct	255.72		269.76		281.11		286.20		237.54	
Nov	255.57		270.91		282.36		288.89		237.23	
Dec	255.59		273.75		285.05		295.36		237.24	

Source: Uganda Bureau of Statistics

Statistical Release Table B

Basic heading price indices, CPI Rescaled and Equipment charge out rates and cement quantities

Jan-Mar 2006 = 100

	Timber		Paint		PVC/HDPE pipes		Water tanks		Burnt clay bricks & tiles	
	2021	2022	2021	2022	2021	2022	2021	2022	2021	2022
Year	287.63		210.03		167.71		142.45		257.72	
Q1	283.02	295.32	209.96	210.26	167.71	161.65	142.52	151.55	257.72	262.72
Q2	286.09		209.96		167.71		142.43		257.72	
Q3	289.17		209.96		167.71		142.43		257.72	
Q4	292.24		210.26		167.71		142.43		257.72	
Jan	282.00	294.29	209.96	210.26	167.71	167.71	142.52	151.55	257.72	257.72
Feb	283.02	295.32	209.96	210.26	167.71	158.62	142.52	151.55	257.72	265.22
Mar	284.05	296.34	209.96	210.26	167.71	158.62	142.52	151.55	257.72	265.22
Apr	285.07	297.37	209.96	225.23	167.71	165.55	142.43	156.83	257.72	270.81
May	286.09	298.39	209.96	225.23	167.71	165.55	142.43	156.83	257.72	270.81
Jun	287.12		209.96		167.71		142.43		257.72	
Jul	288.14		209.96		167.71		142.43		257.72	
Aug	289.17		209.96		167.71		142.43		257.72	
Sep	290.19		209.96		167.71		142.43		257.72	
Oct	291.22		210.26		167.71		142.43		257.72	
Nov	292.24		210.26		167.71		142.43		257.72	
Dec	293.27		210.26		167.71		142.43		257.72	

	Cement		Concrete articles		Steel bars		Roofing sheets		Other iron & steel	
	2021	2022	2021	2022	2021	2022	2021	2022	2021	2022
Year	167.91		216.46		272.52		238.23		244.89	
Q1	167.08	172.50	216.21	226.36	271.36	273.16	229.13	255.11	244.63	239.74
Q2	167.94		216.21		272.39		240.64		250.98	
Q3	167.45		216.36		273.18		242.15		251.71	
Q4	169.15		217.04		273.16		241.00		232.24	
Jan	167.08	169.15	216.21	217.04	271.24	273.16	227.06	241.72	237.36	230.73
Feb	167.08	169.64	216.21	231.01	271.38	273.16	228.78	241.44	245.25	230.70
Mar	167.08	178.72	216.21	231.01	271.46	273.16	231.56	282.18	251.27	257.78
Apr	170.06	183.06	216.21	219.09	271.96	270.39	239.71	344.19	249.84	267.11
May	166.89	183.06	216.21	219.09	272.06	270.47	239.97	344.58	251.78	259.03
Jun	166.89		216.21		273.16		242.24		251.31	
Jul	166.89		216.21		273.16		240.05		251.37	
Aug	166.89		213.89		273.16		243.19		251.83	
Sep	168.58		218.98		273.22		243.22		251.92	
Oct	169.15		217.04		273.16		240.45		234.69	
Nov	169.15		217.04		273.16		240.73		230.91	
Dec	169.15		217.04		273.16		241.83		231.11	

Source: Uganda Bureau of Statistics

Statistical Release Table B (continued)

Basic heading price indices, CPI Rescaled and Equipment charge out rates and cement quantities

Jan-Mar 2006 = 100

	Electrical wire & cable		Aggregate		Lime		Diesel		Bitumen	
	2021	2022	2021	2022	2021	2022	2021	2022	2021	2022
Year	189.11		152.09		233.89		225.32		153.59	
Q1	186.80	189.67	152.09	153.69	235.89	229.00	208.65	255.33	154.10	154.03
Q2	188.50		152.09		235.94		217.52		153.68	
Q3	189.41		152.09		232.62		229.17		153.29	
Q4	191.75		152.09		231.11		245.91		153.29	
Jan	186.71	189.61	152.09	152.09	241.44	230.62	208.41	252.70	154.10	154.09
Feb	186.91	189.60	152.09	154.49	234.25	229.13	208.52	256.00	154.11	154.09
Mar	186.77	189.81	152.09	154.49	231.97	227.26	209.02	257.30	154.09	153.90
Apr	190.02	189.05	152.09	162.04	236.13	238.46	212.02	281.55	154.07	153.90
May	187.92	190.19	152.09	162.04	235.27	239.21	219.48	322.53	153.62	154.00
Jun	187.55		152.09		236.41		221.07		153.34	
Jul	188.90		152.09		234.10		223.34		153.29	
Aug	188.55		152.09		231.36		228.66		153.29	
Sep	190.78		152.09		232.40		235.53		153.29	
Oct	191.72		152.09		228.94		237.46		153.29	
Nov	191.73		152.09		232.80		243.22		153.29	
Dec	191.79		152.09		231.61		257.06		153.29	

	Labour wage rates		Equipment charge out rates		CPI (rescaled) 2006 Q1 = 100		Cement quantities ('000 tonnes)	
	2021	2022	2021	2022	2021	2022	2021	2022
Year	351.29		280.54		286.36		3996.97	
Q1	342.93	354.74	280.55	280.52	283.24	292.57	986.31	935.61
Q2	354.08		280.55		285.71		984.72	
Q3	354.08		280.53		287.08		1056.84	
Q4	354.08		280.52		289.42		969.11	
Jan	342.93	354.08	280.55	280.52	282.28	291.47	295.67	311.34
Feb	342.93	355.07	280.55	280.52	283.24	291.90	317.31	305.84
Mar	342.93	355.07	280.55	280.52	284.20	294.33	373.33	318.42
Apr	354.08	355.07	280.55	280.52	285.01	298.38	337.19	325.17
May	354.08	369.02	280.55	280.52	285.45	302.81	335.61	292.78
Jun	354.08		280.55		286.66		311.91	
Jul	354.08		280.55		286.54		358.16	
Aug	354.08		280.52		286.44		343.63	
Sep	354.08		280.52		288.24		355.05	
Oct	354.08		280.52		288.65		325.13	
Nov	354.08		280.52		289.15		317.80	
Dec	354.08		280.52		290.47		326.18	

Source: Uganda Bureau of Statistics