



UGANDA BUREAU OF STATISTICS

P.O. Box 7186, Kampala, Tel: 0414-706000, Email: ubos@ubos.org, Website: www.ubos.org



PRESS RELEASE

QUARTERLY GROSS DOMESTIC PRODUCT, 1ST QUARTER 2022/2023

HIGHLIGHTS

ORIGINAL UNADJUSTED ESTIMATES CONSTANT PRICES (2016/17)

Year on Year Quarterly Gross Domestic Product (QGDP) for the first quarter (Q1) of 2022/23 grew by 7.5 percent compared to the growth of 2.7 percent (revised) registered in Q1 of the previous year.

Sectoral Performance

The agriculture sector grew by 0.2 percent in Q1 of 2022/23 compared to a growth of 5.3 percent (revised) in Q1 of the previous year. Cash crops growing activities registered a 9.5 percent growth in Q1 2022/23 compared to a growth of 17.1 percent (revised) in Q1 2021/22.

Year on year value added in industry sector grew by 12.7 percent in Q1 of 2022/23 compared to a growth of 0.2 percent (revised) in Q1 of the previous year. Manufacturing activities registered a growth of 16.9 percent in Q1 2022/23 compared to a decline of 5.2 percent (revised) in Q1 2021/22.

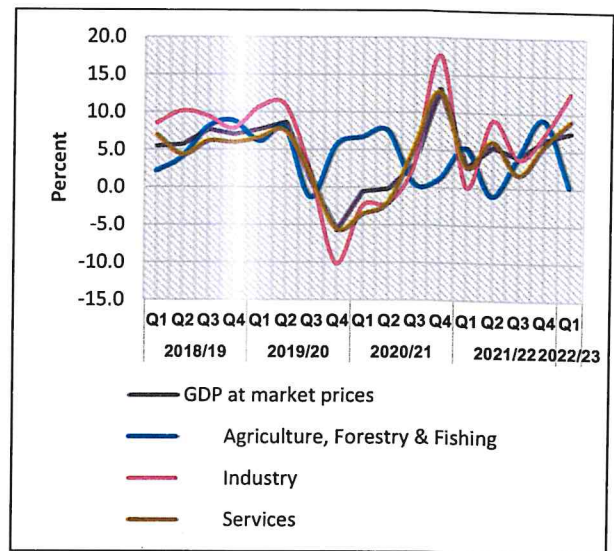
The services sector overall value added grew by 9.0 percent in Q1 of 2022/23 compared to a growth of 2.8 percent (revised) in Q1 of the previous year. This growth was mainly driven by increase in Trade and Repairs activities which grew by 11.6 percent in Q1 of 2022/23. The QGDP growth for Q1 2022/23 and previous quarters is shown in Graph 1 and in the Appendix Tables.

SEASONALLY ADJUSTED ESTIMATES CONSTANT PRICES (2016/17)

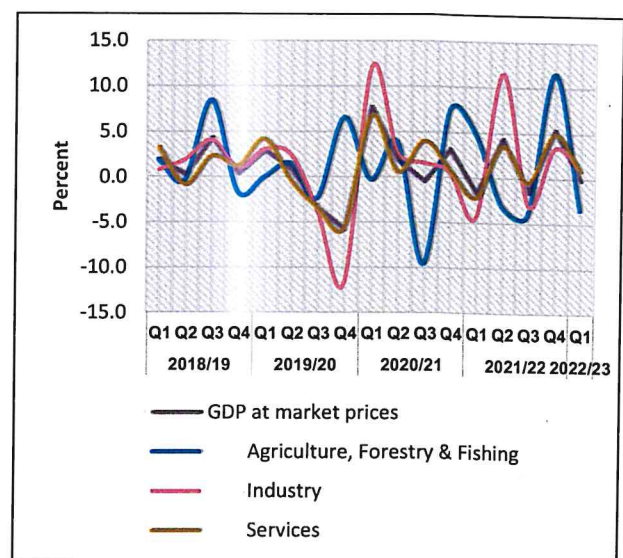
Quarter on Quarter GDP declined by 0.1 percent in Q1 2022/23 compared to the 5.4 percent growth in Q4 2021/22. In terms of sectors, agriculture declined by 3.4 percent in Q1 2022/23 compared to 11.5 percent growth recorded in Q4 2021/22. Industry grew by 0.9 percent in Q1 2022/23 compared to a 3.3 percent growth registered in Q4 2021/22. Services grew by 0.9 percent in Q1 2022/23 compared to a 4.9 percent growth in Q4 2021/22.

In volume terms, Agriculture declined to 8,063 billion shillings in Q1 2022/23 from 8,347 billion shillings in Q4 2021/22. Industry increased to 9,482 billion shillings in Q1 2022/23 from 9,482 billion shillings in Q4 2021/22 while Services increased to 15,625 billion shillings in Q1 2022/23 from 15,482 billion shillings in Q4 2021/22 as shown in Graph 2 and in the Appendix Tables.

Graph 1: GDP and Sectoral Value Added Year on Year percentage change, Original



Graph 2: GDP and Sectoral Value Added Year on Year percentage change, Deseasonalized



ORIGINAL UNADJUSTED ESTIMATES

CURRENT PRICES

QGDP in current prices for the first quarter (Q1) of 2022/23 is estimated to have grown to 49,428 billion shillings from 40,755 billion shillings in Q1 of 2021/22.

Sectoral Contribution

In terms of sector contribution to overall QGDP, agriculture sector contributed 31.0 percent of GDP in Q1 of 2022/23 compared to 29.7 percent contribution registered in Q1 of 2021/22, which is a 1.2 percentage point increase in the share to QGDP.

The contribution of the industry sector was 24.2 percent in Q1 of 2022/23 compared to a 24.3 percent contribution in Q1 of 2021/22.

The services sector continued to be the biggest contributor to QGDP, representing 38.0 percent in Q1 of 2022/23 as compared to 39.4 percent in Q1 of 2021/22.

SEASONALLY ADJUSTED ESTIMATES

CURRENT PRICES

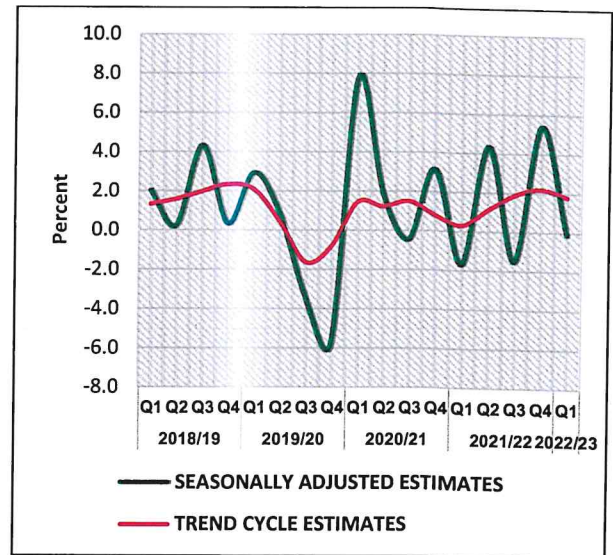
In nominal terms, current prices seasonally adjusted QGDP was estimated at 45,543 billion shillings in quarter one (Q1) of 2022/23 compared to 44,160 billion shillings in Q4 2021/22.

Sectoral Contribution

In terms of sector contribution to overall QGDP, agriculture sector contributed 25.2 percent of GDP in Q1 of 2022/23 compared to 24.8 percent contribution registered in Q4 2021/22, which is a 0.4 percentage point growth in the share to QGDP.

The contribution of the industry sector grew to 26.6 percent in Q1 of 2022/23 from 26.5 percent registered in Q4 2021/22 while services sector continued to be the biggest contributor to QGDP, representing 40.7 percent in Q1 of 2022/23 compared to 41.2 percent in Q4 2021/22.

Graph 3: Quarter to Quarter percentage change in QGDP estimates




22/12/2022

Chris N. Mukiza (PhD)
Executive Director
December 30th, 2022

QUARTERLY GROSS DOMESTIC PRODUCT (QGDP) Q1 2022/2023

EXPLANATORY NOTES

ORIGINAL UNADJUSTED ESTIMATES

Year on year real quarterly GDP grew by 7.5 percent in Q1 of 2022/2023. In volume terms, the economy expanded from 35,736 billion shillings in Q1 2021/2022 to 38,408 billion shillings in Q1 2022/2023.

Sectoral Performance

Agriculture

Year on year value added in the agriculture sector was recorded at 10,716 billion shillings in Q1 2022/2023 compared to 10,695 billion shillings recorded in Q1 of 2021/2022. This growth in value added was mainly due to a growth in cash crops growing activities which registered a growth of 9.5 percent from 925 billion shillings in Q1 of 2021/2022 to 1,012 billion shillings in Q1 2022/2023. On the other hand, food crop activities registered at 6,948 billion shillings in Q1 2022/2023 down from 6,960 billion shillings in Q1 of 2021/2022.

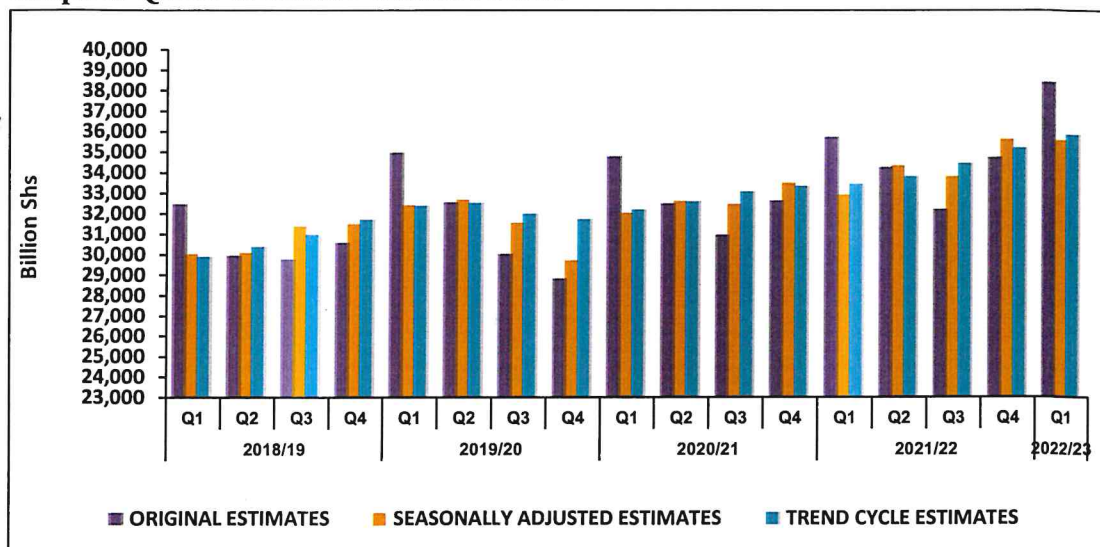
Industry

Year on year industry sector value added grew by 12.7 percent in Q1 2022/2023 compared to a growth of 0.2 percent recorded in Q1 of the previous year. This was mainly due to construction activities which grew to 2,244 billion shillings from 2,227 billion shillings and manufacturing activities grew to 5,431 billion shillings in Q1 2022/2023 from 4,645 billion shillings in Q1 2021/2022.

Services

The value added for the services sector grew by 9.0 percent in Q1 2022/2023 compared to the growth of 2.8 percent in Q1 of the previous year. This was mainly due to growth in Trade and repairs activities which grew by 11.6 percent in Q1 of 2022/2023 and Information & Communication services which grew by 18.2 percent in Q1 2022/2023.

Graph 3: QGDP at 2016/17 Constant Prices



Taxes on Products and Subsidies

Taxes on products and subsidies grew by 13.3 percent from 2,108 billion shillings in Q1 2021/2022 to 2,388 billion shillings in Q1 2022/2023. This was due to a growth in excise duty.

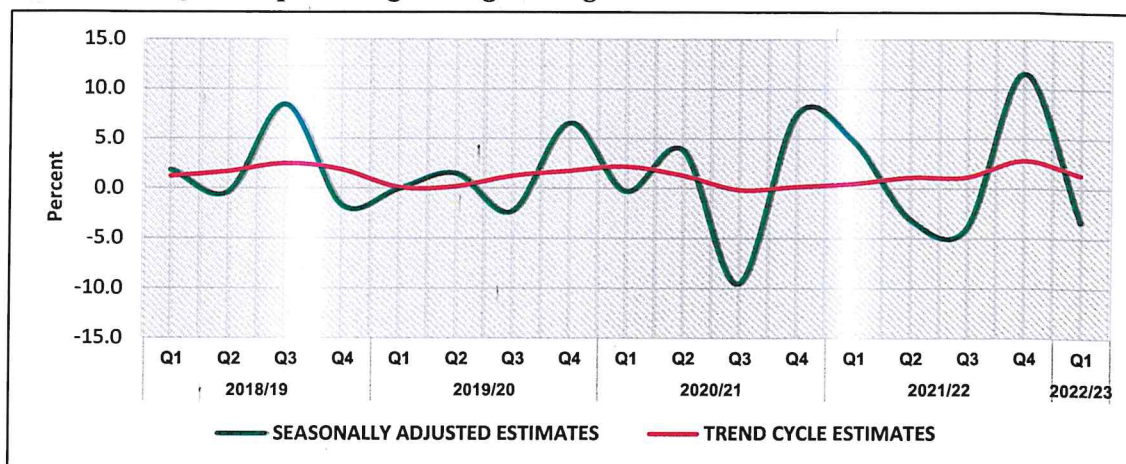
SEASONALLY ADJUSTED ESTIMATES

Quarter on quarter real QGDP declined by 0.1 percent in Q1 of 2022/2023 compared to a growth of 5.4 percent growth in Q4 2021/22. In volume terms, the economy declined from 35,632 billion shillings in Q4 2021/22 to 35,584 billion shillings in Q1 2022/2023.

Agriculture

The agriculture sector value added declined by 3.4 percent in Q1 2022/2023 compared to a 11.5 percent growth registered in Q4 2021/22. The valued added for the sector declined from 8,347 billion shillings in Q4 2021/22 to 8,063 billion shillings in Q1 2022/2023. This was mainly due to a decrease in cash crop growing activities.

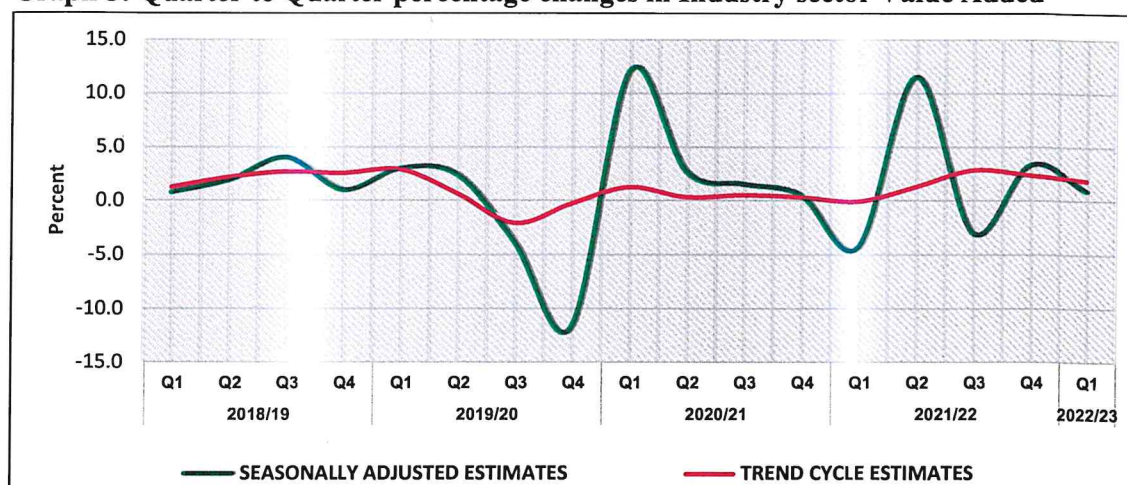
Quarter to Quarter percentage changes in Agriculture sector Value Added



Industry

Valued added for the industry sector grew by 0.9 percent in Q1 2022/2023 compared to a growth of 3.3 percent registered in Q4 2021/22. Industry sector value added grew from 9,396 billion shillings in Q4 2021/22 to 9,482 billion shillings in Q1 2022/2023. This was due to an increase in construction and manufacturing activities.

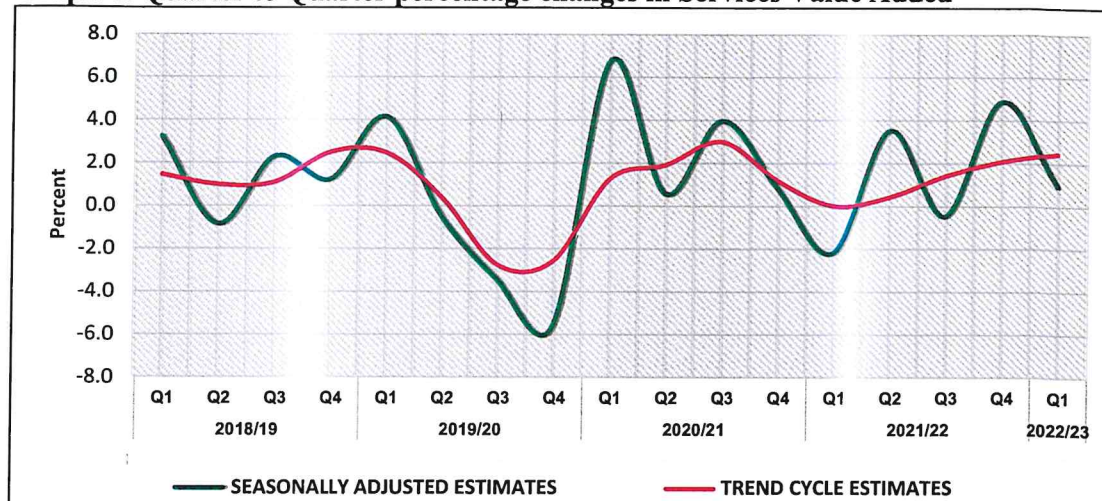
Graph 5: Quarter to Quarter percentage changes in Industry sector Value Added



Services

Valued added for the service sector grew by 0.9 percent in Q1 2022/2023 compared to a growth of 4.9 percent registered in Q4 2021/22. The services sector value added increased from 15,482 billion shillings in Q4 2021/22 to 15,625 billion shillings in Q1 2022/2023. This was due to an increase in Professional, Scientific & Technical activities and Education activities.

Graph 6: Quarter to Quarter percentage changes in Services Value Added



Taxes on Products and Subsidies

Value added for taxes on products and subsidies grew by 0.3 percent in Q1 2022/2023 compared to a decline of 2.6 percent registered in Q4 2021/22. Taxes on products and subsidies increased from 2,407 billion shillings in Q4 2021/22 to 2,414 billion shillings in Q1 2022/2023.

Notes:

All these estimates have been benchmarked to the 2021/22 AGDP Estimates October Release.
Data Updates; Government Finance Statistics, Annual Trade Statistics, Consumer Price Index, Balance of Payments

Benchmarking: They are methods in national accounts used to derive quarterly series that are consistent with their corresponding annual benchmarks and at the same time preserve the short-term movements of quarterly economic indicators.

Next Release will be by March 2023